



Published in final edited form as:

Mol Ecol. 2018 November ; 27(22): 4397–4416. doi:10.1111/mec.14877.

The role of gene flow in rapid and repeated evolution of cave related traits in Mexican tetra, *Astyanax mexicanus*

Adam Herman^{1,2}, Yaniv Brandvain¹, James Weagley³, William R. Jeffery⁴, Alex C. Keene⁵, Thomas J. Y. Kono⁶, Helena Bilandžija^{2,4}, Richard Borowsky⁷, Luis Espinasa⁸, Kelly O'Quin⁹, Claudia P. Ornelas-García¹⁰, Masato Yoshizawa¹¹, Brian Carlson¹², Ernesto Maldonado¹³, Joshua B. Gross¹⁴, Reed A. Cartwright^{15,16}, Nicolas Rohner^{17,18}, Wesley C. Warren¹⁹, and Suzanne E. McGaugh²

¹Plant and Microbial Biology, Gortner Lab, University of Minnesota, Saint Paul, Minnesota.

²Department of Molecular Biology, Rudjer Boskovic Institute, Zagreb, Croatia. ³Ecology, Evolution, and Behavior, Gortner Lab, University of Minnesota, Saint Paul, Minnesota. ⁴Department of Biology, University of Maryland, College Park, Maryland. ⁵Department of Biological Sciences, Florida Atlantic University, Jupiter, Florida. ⁶Minnesota Supercomputing Institute, University of Minnesota, Minneapolis, Minnesota. ⁷Department of Biology, New York University, New York, New York. ⁸School of Science, Marist College, Poughkeepsie, New York. ⁹Department of Biology, Centre College, Danville, Kentucky. ¹⁰Departamento de Zoología, Instituto de Biología, Universidad Nacional Autónoma de México, Coyoacán, Mexico. ¹¹Department of Biology, University of Hawai'i at Mānoa, Honolulu, Hawaii. ¹²Department of Biology, College of Wooster, Wooster, Ohio. ¹³Unidad Académica de Sistemas Arrecifales, Instituto de Ciencias del Mar y Limnología, Universidad Nacional Autónoma de México, Puerto Morelos, Mexico. ¹⁴Department of Biological Sciences, University of Cincinnati, Cincinnati, Ohio. ¹⁵The Bidesign Institute, Arizona State University, Tempe, Arizona. ¹⁶School of Life Sciences, Arizona State University, Tempe, Arizona. ¹⁷Stowers Institute for Medical Research, Kansas City, Missouri. ¹⁸Department of Molecular and Integrative Physiology, The University of Kansas Medical Center, Kansas City, Kansas. ¹⁹McDonnell Genome Institute, Washington University, St Louis, Missouri.

Abstract

Understanding the molecular basis of repeatedly evolved phenotypes can yield key insights into the evolutionary process. Quantifying gene flow between populations is especially important in interpreting mechanisms of repeated phenotypic evolution, and genomic analyses have revealed that admixture occurs more frequently between diverging lineages than previously thought. In this study, we resequenced 47 whole genomes of the Mexican tetra from three cave populations, two surface populations, and outgroup samples. We confirmed that cave populations are polyphyletic and two *Astyanax mexicanus* lineages are present in our dataset. The two lineages likely diverged

Data Accessibility

All reads are available in NCBI short read archive under accession numbers given in Table S3. Supplementary methods, figures, and tables are provided online. Within the supplementary tables are five separate spreadsheet tabs that detail genomic regions and genes that may be spread between caves, complete results from all demography replicates, and enrichment analyses of two QTL regions. Two simulations of selection, given our demography estimates, are included in online supplementary material. Scripts to perform demography analysis are available in a GitHub repository at https://github.com/TomJKono/CaveFish_Demography

much more recently than previous mitochondrial estimates of 5–7mya. Divergence of cave populations from their phylogenetically closest surface population likely occurred between ~161k - 191k generations ago. The favored demographic model for most population pairs accounts for divergence with secondary contact and heterogeneous gene flow across the genome, and we rigorously identified gene flow among all lineages sampled. Therefore, the evolution of cave-related traits occurred more rapidly than previously thought, and troglomorphic traits are maintained despite gene flow with surface populations. The recency of these estimated divergence events suggests that selection may drive the evolution of cave-derived traits, as opposed to disuse and drift. Finally, we show that a key troglomorphic phenotype QTL is enriched for genomic regions with low divergence between caves, suggesting that regions important for cave phenotypes may be transferred between caves via gene flow. Our study shows that gene flow must be considered in studies of independent, repeated trait evolution.

INTRODUCTION

Repeated adaptation to similar environments offers insight into the evolutionary process (Agrawal 2017; Gompel & Prud'homme 2009; Losos 2011; Rosenblum *et al.* 2014; Stern 2013; Stern & Orgogozo 2009). Predictable phenotypes are likely when repeated evolution occurs through standing genetic variation and/or gene flow, such that the alleles are identical by descent, and when populations experience shared, strong selection regimes (Rosenblum *et al.* 2014). Understanding repeated evolution, however, requires an understanding of the basic parameters of the evolutionary process, including how long populations have diverged, how many independent phenotypic origins have occurred, the extent of gene flow between populations, and the strength of selection needed to shape phenotypes (Roesti *et al.* 2014; Rosenblum *et al.* 2014; Rougemont *et al.* 2017; Stern 2013; Welch & Jiggins 2014).

The predictable phenotypic changes observed in cave animals offers one of the most exciting opportunities in which to study repeated evolution (Elmer & Meyer 2011). Cave animals also offer advantages over many systems in that the direction of phenotypic change is known (surface → cave) and coarse selection pressures are defined (e.g., darkness and low nutrient availability). The cavefish (*Astyanax mexicanus*) in northeastern Mexico have become a central model for understanding the evolution of diverse developmental, physiological, and behavioural traits (Keene *et al.* 2015). Many populations of *Astyanax mexicanus* exhibit a suite of traits common to other cave animals including reduced eyes and pigmentation (Borowsky 2015; Protas & Jeffery 2012). In addition, many populations possess behavioral and metabolic traits important for survival in dark, low-nutrient environments (Aspiras *et al.* 2015; Bibliowicz *et al.* 2013; Duboué *et al.* 2011; Jaggard *et al.* 2017; Jaggard *et al.* 2018; Jeffery 2001, 2009; Protas *et al.* 2008; Riddle *et al.* 2018; Salin *et al.* 2010; Varatharasan *et al.* 2009; Yamamoto *et al.* 2009; Yoshizawa *et al.* 2010). Over 30 populations of cavefish are documented (Espinasa *et al.* 2001; Mitchell *et al.* 1977), and conspecific surface populations are a proxy for the ancestral conditions to understand repeated adaptation to the cave environment. Thus, *A. mexicanus* offers an excellent opportunity to evaluate the roles of history, migration, drift, selection and mutation to the repeated evolution of a convergent suite of phenotypes.

Despite evidence for the repeated evolutionary origin of cave-associated traits in *A. mexicanus*, the timing of cave invasions by surface lineages is uncertain, and the extent of genetic exchange between cavefish and surface fish is under debate (Bradic *et al.* 2012; Bradic *et al.* 2013; Coghill *et al.* 2014; Fumey *et al.* 2018; Gross 2012; Hausdorf *et al.* 2011; Ornelas-García *et al.* 2008; Porter *et al.* 2007; Strecker *et al.* 2003; Strecker *et al.* 2004; Strecker *et al.* 2012). High amounts of gene flow between cave and surface populations and among cave populations may complicate conclusions regarding repeated evolution (Mallet *et al.* 2016; Ornelas-García & Pedraza-Lara 2015). For instance, cavefish populations are polyphyletic (Bradic *et al.* 2012; Bradic *et al.* 2013; Coghill *et al.* 2014; Gross 2012; Ornelas-García *et al.* 2008; Strecker *et al.* 2003; Strecker *et al.* 2012) which is consistent with repeated evolution. Yet, this pattern has been previously hypothesized as being consistent with a single invasion of the cave system, subterranean spread of fish, and substantial gene flow of individual caves with their geographically closest surface population (suggested by Coghill *et al.* 2014; Espinasa & Borowsky 2001). Alternatively, gene exchange among caves could result in a shared adaptive history even if cave populations were founded independently. Thus, additional work is needed to understand the demographic history of these populations and implications for the evolutionary process.

Here, we conduct an extensive examination of the gene flow between cave populations and between cave and surface populations of *A. mexicanus* to understand repeated evolutionary origins of cave-derived phenotypes and the potential for gene flow to enhance or impede adaptation to caves. Since we employ whole genome resequencing as opposed to reduced representation methods, we were able to calculate genome-wide absolute measures of divergence (d_{XY}), compare to relative measures (pairwise F_{ST}) (reviewed in Cruickshank & Hahn 2014; Ellegren 2014; Lowry *et al.* 2016), and demonstrate that pairwise F_{ST} is predominantly driven by heterogeneous diversity across populations which obscured accurate inferences of divergence and gene flow among populations in past studies (Charlesworth 1998). Our analyses reveal gene flow between cave populations is more extensive than previously appreciated, cave and surface populations exchange alleles (Wilkens & Strecker 2003), and surface and cave populations have diverged recently. We show that given these demographic parameters, repeated evolution of cave phenotypes may reflect the action, rather than the relaxation of natural selection. Additionally, we present evidence that at least one region of the genome important for cave-derived phenotypes may be transferred between caves, suggesting that gene flow among caves may play a role in the maintenance and/or origin of cave phenotypes.

METHODS

Sampling, DNA extractions, and sequencing

We sampled five populations of *Astyanax mexicanus* cave and surface fish from the Sierra de Guatemala, Tamaulipas, and Sierra de El Abra region, San Luis Potosí, Mexico: Molino, Pachón, and Tinaja caves and the Rascón and Río Choy surface populations (Figure 1). Two main lineages of cave and surface populations are often referred to as ‘new’ and ‘old’ in reference to when the lineages presumably reached northern Mexico, each with independently evolved cave populations. Populations in Molino cave and Río Choy are

considered ‘new’ lineage fish, and the populations of Pachón cave and Tinaja cave are typically classified as ‘old’ lineage populations (Bradic *et al.* 2012; Coghill *et al.* 2014; Dowling *et al.* 2002; Ornelas-García *et al.* 2008). These cave populations were the focus of our study because they are the most commonly used cave populations for laboratory studies.

Rascón was selected because *cytochrome b* sequences are most similar to old lineage cave populations (Ornelas-García *et al.* 2008). Rascón is part of the river system of Rio Gallinas, which ends at the 105 m vertical waterfall of Tamul into Rio Santa Maria/Tampaon. It is hypothesized that new lineage surface fish could not overcome the 105 m waterfall and could not colonize the Gallinas river (e.g. Rascón population). Thus, Rascón likely has remained cut off from nearby surface streams inhabited by new lineage populations, and it, thus, was an important surface locality to include. Most other surface populations are thought to be of ‘new’ origin, exhibit low divergence between each other, and be panmictic (Bradic *et al.* 2012), thus, sampling Río Choy is an initial proxy for sampling surface populations range-wide.

Fin clips were collected from fish in Spring 2013 from Pachón cave, Río Choy (surface), and a drainage ditch near the town of Rascón in San Luis Potosí, Mexico. Samples from Molino cave were collected by W. Jeffery, B. Hutchins, and M. Porter in 2005, and Pecos drainage in Texas in 1994 by W. Jeffery and C. Hubbs. Samples from Tinaja cave were collected in 2002 and 2009 by R. Borowsky.

We complemented our sequencing of these populations with four additional individuals. First, we sequenced an *A. mexicanus* sample from a Texas surface population. While this population is not of direct interest to this study, it has been the focus of many Quantitative Trait Loci (QTL) studies (e.g., O’Quin *et al.* 2015), and therefore it’s evolutionary relationship to our populations is of interest. Second, we aimed to sequence an outgroup to polarize mutations in *A. mexicanus*. To do so, we first sequenced two samples of a close congener *Astyanax aeneus* (Mitchell *et al.* 1977; Ornelas-García & Pedraza-Lara 2015) from Guerrero, Mexico. However, despite being separated from the sampled *Astyanax mexicanus* populations by the Trans-Mexican Volcanic Belt (Mitchell *et al.* 1977; Ornelas-García & Pedraza-Lara 2015), we found a history of gene flow between *Astyanax aeneus* and *Astyanax mexicanus*. We therefore sequenced a more distant outgroup, the white skirt tetra (long-finned) *Gymnocorymbus ternetzi*. *Gymnocorymbus ternetzi* was used only for polarizing 2D site frequency spectra.

DNA was extracted using the Genomic-Tip Tissue Midi kits and DNEasy Blood and Tissue kit (Qiagen). We performed whole genome resequencing with 100bp paired-end reads on an Illumina HiSeq2000 at The University of Minnesota Genomics Center. Samples were prepared for Illumina sequencing by individually barcoding each sample and processing with the Illumina TruSeq Nano DNA Sample Prep Kit using v3 reagents. Five barcoded samples were pooled and sequenced in two lanes. In total, 45 samples were sequenced across 18 lanes. We resequenced nine Pachón cavefish, ten Tinaja cavefish, nine Molino cavefish, six Rascón surface fish, nine Río Choy surface fish and two *Astyanax aeneus* samples. We also made use of the *Astyanax* genome project to add another sample from the Pachón population, and obtain genotype information for the reference sequence. For this

reference sample, we used the first read (R1) from all of the 100bp paired-end reads that were sequenced using an Illumina HiSeq2000 and aligned to the reference genome (McGaugh *et al.* 2014). The Texas population and the white skirt tetra were barcoded, pooled, and sequenced across two lanes of 125bp paired-end reads from a HiSeq2500 in High Output run mode using v3 reagents.

For all raw sequences, we trimmed and cleaned sequence data with Trimmomatic v0.30 (Lohse *et al.* 2012) and cutadapt v1.2.1 (Martin 2011) using the adapters specific to the barcoded individual, allowing a quality score of 30 across a 6bp sliding window, and removing all reads < 30 nucleotides in length after processing. When one read of a pair failed QC, its mate was retained as a single-end read for alignment. Post-processing coverage statistics were generated by the Fastx toolkit v0.0.13 (http://hannonlab.cshl.edu/fastx_toolkit/) and ranged from 6.8 to 11.9 fold coverage (mean = 8.87 fold coverage; median = 8.65 fold coverage Table 1, S1, S2), assuming a genome size estimate of 1.19 Gb (McGaugh *et al.* 2014) for the Illumina Hi-Seq 2000 samples. For the Pachón reference genome sequence, which was excluded from the measures above, the coverage was 16.68 fold. All new Illumina sequence reads were submitted to NCBI's Sequence Read Archive (Table S3). We expect some heterozygosity drop-out with this relatively low level of coverage, but we sought to balance number of samples and depth of coverage in a cost-effective manner. Heterozygosity drop out would lower our diversity estimates, and if directional (e.g., due to reference sequence bias) could increase divergence between populations and lower estimates of gene flow. As detailed below, our data estimate more recent divergence times and higher estimates of gene flow than past studies.

Alignment to reference and variant calling

The *Astyanax mexicanus* genome v1.0.2 (McGaugh *et al.* 2014) was downloaded through NCBI genomes FTP. Alignments of Illumina data to the reference genome were generated with the BWA-mem algorithm (Li 2013) in *bwa-0.7.1* (Li & Durbin 2009, 2010). Both Genome Analysis Toolkit v3.3.0 (GATK) and Picard v1.83 (<http://broadinstitute.github.io/picard/>) were used for downstream manipulation of alignments, according to GATK Best Practices and forum discussions (Auwera *et al.* 2013; DePristo *et al.* 2011; McKenna *et al.* 2010). Alignments of paired-end and orphaned reads for each individual were sorted and merged using Picard. Duplicate reads that may have arisen during PCR were marked using Picard's MarkDuplicates tool and filtered out of downstream analyses. GATK's IndelRealigner and RealignerTargetCreator tools were then used to realign reads that may have been errantly mapped around indels (insertions/deletions). Additional details are in Supplemental Methods.

The HaplotypeCaller tool in GATK v3.3.0 was used to generate GVCFs of genotype likelihoods for each individual. The GenotypeGVCFs tool was used to generate a multi-sample variant call format (VCF) of raw variant calls for all samples. Hard filters were applied separately to SNPs and indels/mixed sites using the VariantFiltration and SelectVariants tools (Table S4). Filtering variants was performed to remove low confidence calls from the dataset. The filters removed calls that did not pass thresholds for base quality, depth of coverage, and other metrics of variant quality (Table S4).

Alleles with 0.5 frequency appeared to be overrepresented in the site frequency spectra, and the depth of coverage for alleles with 0.5 frequency was greater than the coverage at other frequencies. Upon examination, every individual was heterozygous and these alleles occurred in small tracts throughout the genome. We concluded these were likely paralogous regions (teleost fish have an ancient genome duplication, Hoegg *et al.* 2004; Meyer & Van de Peer 2005). Molino was the most severely impacted population, likely due to Molino's low diversity allowing for collapsing of paralogs (see below). To be conservative, we identified sites where 100% of individuals in any population were heterozygotes and excluded these sites in all analyses. We still observed slight inflation at 0.5 frequency even after our heterozygosity filtering, and these are probably instances of collapsed paralogs where our criterion of heterozygosity in every genotyped individual is not met.

We generated a VCF file with variant and invariant sites, and subset it to include biallelic only SNPs where applicable. We excluded sites that were defined as repetitive regions from a Repeat Modeler analysis in McGaugh *et al.* (2014). Next, we removed sites that had less than six individuals genotyped in all populations. We also scanned for indels in the VCF file and removed the indel as well as 3 bp +/- around the indel. In total, 171,841,976 bp were masked from downstream analyses. Lastly, all sites that were tri or tetra-allelic were removed. Thus, sites were either invariant or biallelic. To reduce issues of non-independence induced by linkage disequilibrium, we analyzed a thinned set of biallelic SNPs by retaining a single SNP in each non-overlapping window of 150 SNPs for the ADMIXTURE, TreeMix, and F_3 and F_4 analyses, resulting in approximately 119,000 SNPs for those analyses.

Population phylogeny and divergence

We generated a phylogenetic reconstruction to understand population relationships using 47 sampled individuals (excluding white skirt tetra, but including *A. aeneus* and Texas *A. mexicanus*). The population phylogeny estimation was implemented in RAxML v8.2.8 with the two *A. aeneus* specified as the outgroups. We converted the VCF to fasta format alignments by passing through the mvf format using MVFtools v3 (Pease & Rosenzweig 2015). This was done to preserve ambiguity codes at sites polymorphic in individuals. Sites with greater than 40% missing data were removed using TrimAl v1.2 (Capella-Gutiérrez *et al.* 2009). We performed 100 rapid bootstrapping replicates followed by an ML search from two separate parsimony trees. For computational efficiency, we implemented the GTRCAT model, though we note that inferences using a smaller subset of the genome and the GTRGAMMA model recover the same topology as presented in Figure 1. The ML tree with bootstrap support was drawn using the ape package v3.5 (Paradis *et al.* 2004) in R v3.2.1 (Team 2014) using the *A. aeneus* samples as the outgroup, however, our results are consistent even if the outgroup is left unspecified and this decision is justified by the observation that *A. aeneus* is more distant from all *A. mexicanus* populations than any are to one another, as measured by the mean number of pairwise sequence differences.

Intra- and inter-population average pairwise nucleotide differences—Average pairwise nucleotide diversity values (π) reflect the history of coalescence events within and among populations (Hudson 1990; Nei 1987) and are directly informative about the history

and relationships of a sample. Here, we use the following notation for inter- and intrapopulation average pairwise nucleotide diversity values: intrapopulation values are designated with π , while interpopulation values are designated with d_{XY} where X and Y are different populations (e.g., $d_{\text{Rascón-Pachón}}$). Pairwise nucleotide diversity estimates for fourfold degenerate sites were calculated for 46 individuals (excluding Texas *A. mexicanus* and white skirt tetra) from phased genomic data using the VCF file with invariant and variant sites unless otherwise noted. Additional details for each analysis (e.g., window size, site class used) are given supplemental methods. We also performed windowed estimates along the entire genome to understand the fine-scale apportionment of ancestry.

We use these levels of diversity and divergence to estimate the difference in coalescent times between and within populations. In the absence of gene flow, this excess between populations can be translated into an estimate of divergence time ($d_{XY} - \pi_{\text{anc}} = 2\mu T$ (Brandvain *et al.* 2014; Hudson *et al.* 1987), where T is the population split time, and using a diversity in surface population as a stand in for π_{anc}). After removing recent hybrids identified by ADMIXTURE, we use this approach to estimate this excess coalescent time between pairs of populations. However, given extensive evidence for gene exchange (below), this estimate will be more recent than the true divergence time (Mallet *et al.* 2016), which we estimate with model-based approaches below.

In this and all other estimates of divergence time, below, we assume a neutral mutation rate of 3.5×10^{-9} /bp/generation which is estimated using parent-offspring trios in cichlids (Malinsky *et al.* 2017). We know little about the age-specific reproductive outputs for *Astyanax* in the wild. However, in the laboratory, *Astyanax* is sexually mature as early as six months under optimal conditions, though this varies across laboratories (Borowsky 2008a; Jeffery 2001). Since conditions in the wild are rarely as optimal as in the laboratory, we assume generation interval (Fenner 2005) is one year, though, our general conclusions are consistent if the generation interval is longer.

Genome-wide tests for gene flow

ADMIXTURE—We estimated admixture (cluster membership) proportions for the individuals comprising the five populations studied, as well as *A. aeneus* samples, using ADMIXTURE v1.3.0 (Alexander & Lange 2011; Alexander *et al.* 2009). We conducted 10 independent runs for each value of K (the number of ancestral population clusters) from K = 2 to K = 6 and present results for the run with the K = 6 (i.e., the number of sampled biological populations).

F₃ and F₄ statistics—After removing recent hybrids, we used F_3 and F_4 -statistics (as implemented in the *threepop* and *fourpop* programs packaged with TreeMix v1.12 (Pickrell & Pritchard 2012)) to test for historical gene flow. For computational feasibility, we calculated a standard error for each statistic using a block jackknife with blocks of 500 SNPs, assessing significance by a Z-score from the ratio of F_4 to its standard error.

The F_3 statistic (Peter 2016; Reich *et al.* 2009), represented as $F_3(X;A,B)$, is calculated as $E[(p_X - p_A)(p_X - p_B)]$, where X is the population being tested for admixture, A and B are treated as the source populations, and p_X, p_A, p_B are the allele frequencies. Without

introgression, F_3 , is positive, and a negative value occurs when this expectation is overwhelmed by a non-treelike history of three populations. Importantly, complex histories of mixture in populations A and/or B do not result in significantly negative F_3 values (Patterson *et al.* 2012; Reich *et al.* 2009).

F_4 tests assess ‘treeness’ among a quartet of populations (Reich *et al.* 2009). $F_4(P1,P2;P3,P4)$ is calculated as $E[(p_1 - p_2)(p_3 - p_4)]$, and serves as a powerful test of introgression when P1, P2 and P3, P4 are sisters on an unrooted tree. A significantly positive F_4 value means that P1 and P3 are more similar to one another than expected under a non-reticulate tree — a result consistent with introgression between P1 and P3, or between P2 and P4. Alternatively, a significantly negative F_4 value is consistent with introgression between P1 and P4 or between P2 and P3. Regardless of the sign of this test, F_4 values may reflect introgression events involving sampled, unsampled, or even extinct populations.

TreeMix—We used the Treemix program v1.12 (Pickrell & Pritchard 2012) to visualize all migration events after removing recent hybrids. Rather than representing population relationships as a bifurcating tree, TreeMix models population relationships as a graph in which lineages can be connected by migration edges. We used the same thinned biallelic SNPs as above. As with F_3 and F_4 , we removed recent hybrids from this analysis. We first inferred the maximum-likelihood tree and then successively added single migration events until the proportion of variance explained by the model plateaued (Pickrell & Pritchard 2012).

Demographic modeling

We modeled the demographic history of pairs of populations to further elucidate their relationships and migration rates. To conduct demographic modeling, we generated unfolded joint site frequency spectra (2D SFS) from the invariant sites VCF using a custom Python script. Detailed explanation of parameters and a user-friendly guide is available here: https://github.com/TomJKono/CaveFish_Demography/wiki

White skirt tetra (*Gymnocorymbus ternetzi*) was used as the estimated ancestral state for all 10 pairwise combinations of Río Choy surface, Molino cave, Pachón cave, Rascón surface, and Tinaja cave. Recently admixed individuals were excluded from the comparisons. To reduce the effect of paralogous alignment from the ancient teleost genome duplication, sites at 50% frequency in both populations were masked from the demographic modeling analysis. Sites were excluded if they were heterozygous in the representative outgroup sample or had any missing information in either of the populations being analyzed. In addition, sites were excluded due to indels or repetitive regions as described above. Aside from these exclusions, all other sites, including invariant sites were included in all 2D SFS and the length of these sites make up locus length.

A total of seven demographic models were fit to each 2D SFS to infer the timing of population divergence, effective migration rates, and effective population sizes using a i 1.7.0 (Gutenkunst *et al.* 2009). The seven models were derived from previously published demographic modeling analysis (Tine *et al.* 2014). Briefly, the seven models are as follows: SI - strict isolation, SC - secondary contact, IM - isolation with migration, AM - ancestral

migration, SC2M - secondary contact with two migration rates, IM2M - isolation with migration with two migration rates, and AM2M - ancestral migration with two migration rates (see Figure S9 of Tine *et al.* 2014). Two migration rates within the genome appeared to fit the data better in previous work (Tine *et al.* 2014), as this approach allows for heterogeneous genomic divergence (M which is most often the largest migration rate within the genome, M_i which is usually the lowest migration rate within the genome). Descriptions of the parameters and parameter starting values are given in Table S5 and Supplementary Methods. For each replicate, Akaike Information Criterion (AIC) values for each model were converted into Akaike weights. The model with the highest mean Akaike weight across all 50 replicates was chosen as the best-fitting model (Rougeux *et al.* 2017; Table S6; similar to Wagenmakers & Farrell 2004).

The best-fitting demographic model for each 2D SFS comparison was used to generate estimates of the population parameters. Scaling from estimated parameters to real-value parameters was done assuming a mutation rate (μ) of 3.5×10^{-9} per bp per generation (Malinsky *et al.* 2017) and a locus length (L) of the number of sites used to generate the 2D SFS. For effective population size estimates, we estimated the reference population size, N_{ref} , as the mean “theta” value from all 50 replicates of the best-fitting model multiplied by $1/(4\mu L)$. The effective population sizes of the study populations were then estimated as a scaling of N_{ref} . To estimate the per-generation proportion of migrants, we scaled the mean total migration rates from m_i by $1/(2N_{ref})$. Total times since divergence for pairs of populations were estimated as the sum of the split time (“ T_s ”) and time since secondary contact commenced (“ T_{sc} ”) estimates for each population pair.

Modeling of selection needed for cave alleles to reach high frequency

With demographic estimates provided by our whole genome sequencing and m_i , we estimated the selection coefficients needed to bring alleles associated with the cave phenotype to high frequency. We implemented the 12-locus additive alleles model by Cartwright *et al.* (2017) with the parameters estimated for Molino cave, as this is the population where selection would need to be strongest to overcome the effects of drift. We estimated the one-way mutation rate of loci (μ) to be on the order of 1×10^{-6} (c.f. 3.5×10^{-9} /bp/generation * 1170bp, which is the median gene length across the genome). Other parameters were $N = 7,335$ (Molino N_e), $h = 0.5$ (additive alleles), $k = 12$ (number of loci), and $Q = 0.1$ (surface allele frequency of cave-favored alleles). The simulation model was adapted from Cartwright *et al.* (2017) with the addition that the cave population was isolated for a period of time before becoming connected again with the surface. Consistent with our demographic models for Molino and Río Choy, migration rates spanned between $10^{-6} - 10^{-5}$ with 91,000 generations of isolation followed by 71,000 generations of connection. We also conducted simulations with the parameters from Tinaja cave as this is the cave population where selection would need to be weakest to overcome the effects of drift. All parameters were the same as above except $N = 30,522$ (Tinaja N_e), and 170,000 generations of isolation were followed by 20,000 generations of connection.

Candidate regions introgressed between caves

To identify regions of the genome that were likely transferred between cave populations or between cave and surface populations and were linked to cave-associated phenotypes, we implemented an outlier approach incorporating pairwise sequence differences and F_{ST} . To determine potential candidate regions, we utilized 5kb d_{XY} windows using all biallelic sites, not just four-fold degenerate, since so few sites would be available. We first phased the biallelic variant sites for all samples using BEAGLE (version 4.1; Browning & Browning 2007). We then determined the number of invariant sites (from the full genome VCF) and variant sites in each 5kb window to calculate average pairwise diversity. We then identified 5kb regions in which d_{XY} was in the lower 5% tail of the genomic distribution of d_{XY} for all three pairwise combinations of cave populations, but substantial divergence with either surface population as measured by F_{ST} or d_{XY} . For F_{ST} outliers, we required that π per gene for both surface fish populations must be greater than the lowest 500 π values for genes across the genome. This requirement protects, in part, against including regions that are low diversity across all populations due to a feature of the genome.

To put the results in context of phenotypes mapped to the genome, we created a database of prior QTL from several key studies (Kowalko *et al.* 2013a; Kowalko *et al.* 2013b; O'Quin *et al.* 2013; Protas *et al.* 2007; Protas *et al.* 2008; Yoshizawa *et al.* 2015; Yoshizawa *et al.* 2012b) and used overlapping markers between studies to position QTL relative to the linkage map in O'Quin *et al.* (2013). For markers in (Kowalko *et al.* 2013b), we used Blastn to place the marker on a genomic scaffold and placed the QTL from (Kowalko *et al.* 2013b) in our database as locating to the entire scaffold. Our QTL database is given in Table S7.

RESULTS

Population phylogenetic reconstruction

We inferred the population phylogeny using half the nuclear genome (invariant and variant sites, but no mitochondrial sites) in the program RAxML. Our phylogenetic tree clearly demarcates two lineages and indicates that the Rascón surface population and the Tinaja and Pachón cave populations form a monophyletic clade (Figure 1; often referred to as 'old lineage'). Similarly, the Río Choy surface and Molino cave populations form a monophyletic clade (referred to as 'new lineage'). Thus, this phylogeny indicates that many cavefish traits may be polyphyletic (i.e., evolved through repeated evolution).

In agreement with a previous study showing that Molino cave population has the lowest diversity of cave populations sampled, the Molino cave population exhibits shorter branches than other populations tested (Bradic *et al.* 2013), while the surface populations exhibit longer branch lengths. While all populations and the two lineages have high bootstrap support (> 99), bootstrap support with genomic-scale data provides little information about the evolutionary processes or the distribution of alternative topologies across the genome (Yang & Rannala 2012), thus, we use a series of tests below to explore this further.

Diversity and divergence

Patterns of diversity within populations, π , and interpopulation divergence, d_{XY} , provide a broad summary of the coalescent history within and between populations. We present pairwise sequence differences at fourfold degenerate sites between all pairs of individuals (Figure 2). The ‘striped’ individuals in Figure 2B correspond to recent hybrids as inferred by ADMIXTURE (Figure 2A). We removed these putative recent hybrids from our summary of diversity within and divergence between populations presented in Table 2.

Genome-wide average diversity within cave populations ($\pi_{4\text{fold degen}}$: Molino = 0.00074, Tinaja = 0.00129, Pachón = 0.00100; Table 2) is substantially lower than diversity within surface populations ($\pi_{4\text{fold degen}}$: Río Choy = 0.00300, Rascón = 0.00207), reflecting a decrease in effective population size in caves (*sensu* Avise & Selander 1972). Molino cave is the most homogenous. These results are consistent with the short branches in cave populations observed in the phylogenetic tree produced by RAxML (Figure 1). In contrast, the surface population Río Choy is the most diverse in our sample — so much so that two Río Choy fish may be more divergent than fish compared between any of the old lineage populations (e.g., Tinaja cave and Rascón surface).

Genome-wide average divergence between the new and old lineages ($d_{XY\ 4\text{fold degen}}$ = 0.00340 – 0.00374, Table 2) exceeds divergence between cave and surface populations within lineages ($d_{XY\ 4\text{fold degen}}$ Molino-Río Choy = 0.00332; Tinaja-Rascón = 0.00285; Pachón-Rascón = 0.00298; Table 2). Thus, old and new lineages diverged prior to (or have experienced less genetic exchange than) any of the cave-surface population pairs within lineages. The two old lineage caves are the least diverged populations in our sample ($d_{XY\ 4\text{fold degen}}$: Pachón-Tinaja = 0.00225). These results are consistent with both the observation of monophyly of old and new lineages and the observation that old lineage cave populations are sister taxa in the RAxML tree (Figure 1).

Divergence between populations suggests that a simple bifurcating tree does not fully capture the history of these populations. For example, divergence between the new lineage cave population (Molino) and the geographically closer old lineage cave population (Pachón) is less than divergence between Molino and the geographically further old lineage populations (Tinaja and Rascón; Table 2). Likewise, all old lineage populations are closer to Molino cave than they are to Río Choy. These results suggest gene flow between Molino cave and the old lineage populations, which is supported by additional analyses.

Genome-wide tests suggest substantial historical and contemporary gene flow

ADMIXTURE—We focus our discussion on $K = 6$, the case where the number of clusters matches our presumed number of populations (Figure 2A), and additional cluster sizes are presented in (Figure S1). While, individuals largely cluster exclusively with others from their sampled population, we also observe contemporary gene flow between cave and surface populations, as well between new and old lineage taxa (Figure 2A, S1).

Specifically, there appears to be reciprocal gene exchange between the Tinaja cave and the old lineage surface population (a Tinaja individual shares 22% cluster membership with Rascón surface and a Rascón individual shares 29% membership with Tinaja; Figure 2A, S1,

S2). Another Tinaja sample appears to be a recent hybrid with the new lineage surface population (a Tinaja individual with 14% membership with Río Choy). One new lineage surface sample appears to have recent shared ancestry with samples from Pachón (i.e., Río Choy individual with 12% cluster membership with Pachón).

Although unsupervised clustering algorithms may show signs of admixture even when none has occurred (Falush *et al.* 2016), corroboration of ADMIXTURE results with supporting patterns of pairwise sequence divergence (Figure 2, S1, S2) in putatively admixed samples (Rascón 6, Tinaja 6, Choy 14, Tinaja E) strongly suggests that recent hybrids between cave and surface populations and old and new lineages are present in current-day populations.

While the existence of recent hybrids is consistent with long-term genetic exchange, such hybrids do not provide evidence for historical introgression. We, therefore, rigorously characterize the history of gene flow in this group, while removing putative recent hybrids identified from ADMIXTURE and pairwise sequence divergence to ensure that our historical claims are not driven by a few recent events.

F_3 and F_4 statistics—To test for historic genetic exchange, we calculated F_3 and F_4 “tree imbalance tests,” after removing recent hybrids identified by ADMIXTURE. Throughout the section below, gene flow is supported by F_4 statistics between the two underlined taxa and/or the two non-underlined taxa in the four-taxa tree. Further, we interpret the F_4 statistics in relation to the ranking of the F_4 scores. Extreme F_4 scores may be the result of both pairs (e.g., A-C and B-D) exchanging genes, amplifying the F_4 score beyond what the score would be if gene flow occurred only between a single pair within the quartet.

F_3 and F_4 tests convincingly show that Rascón, the old lineage surface population, has experienced gene flow with a lineage more closely related to *A. aeneus* than to the other individuals in our sample (Table 3). This claim is supported by numerous observations including the observations that, while all F_3 tests including Rascón are significantly negative (i.e., supporting admixture), the most extreme F_3 statistic is from a test with Rascón as the target population and *A. aeneus* and Tinaja as admixture sources, reflecting that both *A. aeneus* and Tinaja have likely hybridized extensively with Rascón. Additionally, all F_4 tests of the form (*A. aeneus*, new lineage; old lineage cave, Rascón) are significantly negative, meaning that Rascón is genetically closer to *A. aeneus* than expected given a simple tree (Figure S3). Therefore, *A. aeneus* is an imperfect outgroup to *A. mexicanus*. Our interpretation is that *A. aeneus* and Rascón hybridized too deep in the past to be detected by ADMIXTURE analysis, but sufficiently recently to be detected by F_3 and F_4 tests. This is further supported by an analysis included in the supplemental materials that did not find long blocks of sequence similarity to *A. aeneus* in the Rascón genome.

Our results also show that the new lineage surface population, Río Choy, experienced gene flow with an unsampled outgroup. A significantly negative F_3 value demonstrates Río Choy (the new lineage surface population) is an admixture target with Molino (new lineage cave) and *A. aeneus* as admixture sources (Table 3). This claim is bolstered by significantly positive F_4 values in all comparisons of the form (*A. aeneus*, old lineage; Río Choy, Molino) in Figure S3. However, because d_{XY} between *A. aeneus* and both new lineage populations

are nearly equivalent, we suggest this is an example of “the outgroup case” for F_3 (Patterson *et al.* 2012) in which admixture is attributed to an uninvolved outgroup (in this case, *A. aeneus*) rather than the unsampled admixture source.

We uncover evidence for admixture between the old lineage cave population, Pachón, and both new lineage populations (Molino cave and Río Choy surface), as observed in recent hybrids in ADMIXTURE. Specifically, the significantly negative F_4 values for (*A. aeneus*, new lineage; Pachón, Tinaja) (Figure S3) are consistent with gene flow between both new lineage populations and the old lineage Pachón cave, and/or gene flow between Tinaja and *A. aeneus*. Because no other evidence suggests gene flow between Tinaja and *A. aeneus*, we argue that this result reflects gene flow between Pachón and the new lineage populations. This claim is further supported by the observation that d_{XY} between new lineage populations and Pachón is consistently lower than d_{XY} between new lineage populations and the other old lineage populations (Table 2).

Additionally, our analyses are consistent with gene flow between the old lineage Tinaja cave and the old lineage surface population, Rascón. Again, this result complements the discovery of two recent hybrids between these populations in our ADMIXTURE analysis. This claim is supported by the significantly positive F_4 value for (*A. aeneus*, Rascón; Pachón, Tinaja). Since we lack evidence of Pachón - *A. aeneus* admixture, this significant F_4 statistic is likely driven by Rascón - Tinaja admixture.

Despite gene flow among most population pairs, there is one case in which tree imbalance tests failed to reject the null hypothesis of a bifurcating tree: F_4 tests of the form (new lineage, new lineage; old lineage, old lineage) (Figure S3). This result is counter to both our observation of recent hybrids (between the new and old lineages observed in ADMIXTURE), and the gene flow observed in other F_4 - statistics, as well as TreeMix (Figures 3, S4), d_{XY} nearest neighbor proportions (Figures S5–S7) and Phylonet (Figure S8). In these cases, it is also plausible that F_4 scores that do not differ from zero may reflect opposing admixture events that cancel out a genome-wide signal, rather than an absence of introgression (see Reich *et al.* 2009).

TreeMix—TreeMix allows us to visualize population relationships as a graph depicting directional admixture given a number of migration events, and uses the covariance structure of allele frequencies among populations rather than allele frequency difference correlations (e.g., F_3 and F_4). By examining multiple runs with different levels of migration, the TreeMix run with five migration events best explains the sample covariance (Figure S4).

TreeMix illustrates gene flow from the ancestral new lineage into both Rascón surface and Pachón cave (Figure 3; also suggested by F_3 and F_4 statistics), while providing evidence for gene flow from the lineage leading to *A. aeneus* samples to the Río Choy and Rascón lineages (also suggested by F_3 and F_4 statistics). Migration from Pachón cave into Tinaja cave is indicated (also supported by a i modeling). However, the topology recovered by TreeMix places Pachón as the outgroup to (Rascón, Tinaja), thus, Pachón to Tinaja gene flow likely (partially) reflects this incorrect tree structure.

Care should be taken in interpreting the migration arrows drawn on the TreeMix result. First, we limited the number of migration edges to five, so further (possibly real) migration events are not represented. Second, any particular inferred admixture event is necessarily unidirectional and the source population is designated as the population with a migration weight = 50%. Thus, while directionality is hard to pin down with these analyses, we can confidently report admixture among and between lineages and habitat types.

Divergence times are younger than expected without accounting for migration

The levels of diversity and divergence allow us to calculate a simple estimate of population split times. This approach results in remarkably recent divergence time estimates. For example, we estimate the oldest split between old and new lineages of approximately 156,597 generations (Table 2; using $\pi_{A. aeneus}$ as a proxy for ancestral diversity, and representing the old-new lineage split by $d_{XY}^{\text{Choy,Rascón}}$, $((4.68 - 3.58) \times 10^{-3}) / (7 \times 10^{-9})$). Assuming the generation interval of one year, the oldest estimate for the old and new split is more than an order of magnitude less than that estimated from the *cytochrome b* which places the divergence time between lineages between 5.7–7.5 mya (Ornelas-García *et al.* 2008). Similarly, we estimate that the split between new lineage cave (Molino) and new lineage surface (Río Choy) populations was approximately 113,913 generations ago $((4.38 - 3.58) \times 10^{-3}) / (7 \times 10^{-9})$ similar to a recent analyses (Fumey *et al.* 2018). However, other estimates using this method were unstable, suggesting that *A. aeneus* is not a good proxy for ancestral diversity in the old lineage and/or introgression obscures any realistic estimate of divergence time. Our results that suggest gene flow (even with the exclusion of recently admixed individuals) indicate that true divergence times exceed those estimated from comparisons of d_{XY} and π . We, therefore, pursue a model-based estimate of population divergence time while accounting for introgression.

Demographic modeling indicates cave populations are younger than expected when accounting for migration

Demographic modeling using *fastsimcoal2* revealed extensive interdependence and contact for all populations studied. In all cases, models with multiple migration rates fit the population comparisons best, suggesting that some genomic regions are more recalcitrant to gene flow than others. For most pairwise population comparisons, the best-fitting models supported a period of isolation followed by a period of secondary contact (SC2M; Table S6). The only exceptions were the comparisons between Molino-Rascón and Pachón-Rascón that supported divergence with isolation (IM2M) slightly more than SC2M (Table S6). The distributions of divergence times for IM2M were multimodal (Molino-Rascón) or nearly flat (Pachón-Rascón) (Figure S9); thus, we present results from SC2M models that exhibit much tighter distributions for divergence estimates (Table 4; Figure S9).

Effective population sizes for the surface populations were an order of magnitude higher than for the cave populations, and Molino exhibited the lowest effective population size of all five populations (Table S8). Notably, even for cave populations, estimates of effective population size were an order of magnitude larger than previous estimates (Avise & Selander 1972; Bradic *et al.* 2012) and on par with mark-recapture census estimates (~8500 fish in Pachon cave with wide 95% confidence interval of 1,279–18,283; Mitchell *et al.* 1977).

a i demographic modeling estimated deeper split times for populations than the divergence estimates calculated as $T = (d_{XY} - \pi_{ancestral})/2\mu$ (above) because they account for introgression that can artificially deflate these divergence estimates. The oldest divergence time between old and new lineages was estimated at 256,675 generations before present (Río Choy-Rascón), (Table 4, S9, S10; Figure S9; using SC2M models for all comparisons). Importantly, both the model-independent method and the demographic estimates presented here reveal relatively similar divergence times between the old and new lineages (~157k versus ~257k generations ago), and these estimates differ substantially from the several million year divergence time obtained through mtDNA (Ornelas-García *et al.* 2008), unless we have dramatically underestimated generation interval in the wild.

Cave-surface splits for both the new and old lineage comparisons were remarkably similar (Pachón - Rascón: 161,262 generations; Tinaja - Rascón: 190,650 generations; Molino - Río Choy: 162,537 generations). While the two old lineage cave populations (Pachón - Tinaja) are estimated to have split slightly more recently (115,522 generations before present), suggesting that colonization of one of the two old lineage caves was potentially from subterranean gene flow (as suggested by Espinasa & Espinasa 2015). Distributions and estimates across 50 replicates are given in Figure S9, Table S9, and Table S10.

Subterranean gene flow may be higher than surface to cave or between-lineage surface gene flow. The highest rates of gene flow are estimated between caves, and surprisingly, Molino cavefish exhibited a migration rate into Tinaja cave that is higher than Tinaja gene flow into Pachón cave. Surface fish gene flow rates into cave populations are also among the highest rates (especially Río Choy into all sampled caves). Notably, several caves also have relatively high rates of gene flow into surface populations (Molino into Río Choy and Tinaja into Rascón).

Heterogeneity in gene flow across the genome is also different across population pairs. Generally, more of the genome of cave-surface pairs (48%) seems to follow the lower migration rate than in cave-cave pairs (40%) and surface-surface pair (18%), suggesting the possibility that strong selection for habitat-specific phenotypes slows gene flow across the genome.

Modeling of selection needed for cave alleles to reach high frequency

Similarly to that estimated by (Cartwright *et al.* 2017) selection coefficients of ~0.01 are needed for cave-phenotype alleles to reach high frequencies in either Molino or Tinaja cave populations with a 12-locus additive model (Figure 4). Animations of allele frequencies at different levels of selection across the historical demography are provided in Supplementary materials. There is an increase in noise at the secondary contact period because the influx of new alleles. This has little effect overall because the migration rate is of the same magnitude as the mutation rate and may be because prior to secondary contact, the loci are typically fixed for either the cave or surface allele and after contact, the loci may become more polymorphic. The average selection coefficients appear to approximately match the pre-secondary contact average.

In sum, our data support that cavefish population sizes are sufficiently large for selection to play a role shaping traits, gene flow is sufficiently common to impact repeated evolution, and cave-surface divergence is more recent than expected from mitochondrial gene trees.

Candidate gene regions introgressed between caves

In light of the suspected gene flow among populations, we identified genomic regions that showed molecular evolution signatures consistent with gene flow between caves and genomic regions that are likely affected by cave-surface gene flow. There were 997 5kb regions (out of 208,354 total) that exhibited the lowest 5% of d_{XY} windows of the genome for each of the cave-cave comparisons (Pachón-Molino, Pachón-Tinaja, Molino-Tinaja). These windows were spread across 471 scaffolds and overlapped 500 genes. We highlight some of these 500 genes in the context of Ensembl phenotype data in Supplementary text (see also Table S11).

Several of these regions cluster with known QTLs (O'Quin & McGaugh 2015). We examined co-occurring QTLs for many traits on Linkage Group 2 and Linkage Group 17 (LG2, LG17, Table S12), which were two main regions highlighted in recent work on cave phenotypes (Yoshizawa *et al.* 2012b). We found that the co-occurring QTL on Linkage Group 2 harbored about 1.5-fold (odds ratio = 1.54, 95% CI = 1.139–2.089) the number of regions with low-divergence among all three cave populations (44 windows with all three caves in lowest 5% of $d_{XY}/6070$ total windows that had data across these same scaffolds) relative to the total across the entire genome (997/208354). This suggests that this region with many co-occurring QTL was potentially transferred among caves. Notably, we did not find a similar pattern for linkage group 17 (proportion of windows across all three caves in 5% lowest $d_{XY} = 0.00482$ for LG17 and 0.00479 across the entire genome). The region on Linkage Group 2 is not simply an area of high sequence conservation (which could account for low divergence among all three cave populations) because the mean divergence between surface-surface comparisons for this region is very similar to the genome-wide average (genome wide $d_{XY} = 0.00481$, LG2 QTL region $d_{XY} = 0.00482$).

We find genes that look to be affected by gene flow between caves. We found 1004 genes that exhibited $d_{XY} = 0$ and another 370 genes with d_{XY} in the lowest 5% across the genome for the three pairwise comparisons of the caves, many with substantial divergence to at least one surface population (Table S13). We associated these genes with previously known QTL with linkage groups that follow (O'Quin *et al.* 2013) and a QTL database is provided (Table S7). One example is *fam136a* (*family with sequence similarity 136, member A*), which is under a QTL for body condition on Linkage Group 10. This gene is expressed in the hair cells of the crista ampullaris, an organ important for detecting rotation and acceleration, in the semicircular canals of the inner ear in the rat (Requena *et al.* 2014). All caves are identical except for a SNP that may have come from the Rascon population in one of the admixed Tinaja individuals. *fam136a* is in the top 10% most divergent genes by d_{XY} for Rascón surface – Pachón cave and Rascón surface – Tinaja cave populations (Molino-Rascón surface comparisons fall in the top 13% most divergent genes via d_{XY}). Notably, Rascon and *A. aeneus* exhibit an E (glutamic acid) at 15aa (suggesting this is the ancestral state), whereas Río Choy and all caves exhibit a G (glycine). This amino acid switch is

between a polar and a hydrophobic, thus not very functionally conserved. Such pattern could be produced by gene flow among caves or by gene flow of Río Choy with the cave populations.

DISCUSSION

The role of admixture between diverging populations is increasingly apparent as the application of genomic analyses has become standard, and such gene flow shapes the study of repeated evolution (Colosimo *et al.* 2005; Cresko *et al.* 2004; Roesti *et al.* 2014; Van Belleghem *et al.* 2018; Welch & Jiggins 2014). Further, gene flow may create a signature that resembles parallel genetic divergence as effective migration is reduced in the same genomic regions for multiple ecotypic pairs upon secondary contact (Bierne *et al.* 2013; Rougemont *et al.* 2017). Thus, to understand the repeated origins of traits, an accurate understanding of the demography is required (Dasmahapatra *et al.* 2012; Rosenblum *et al.* 2014).

Astyanax mexicanus have been increasingly studied as a model of repeated evolution of wide-ranging traits (Elmer & Meyer 2011; Krishnan & Rohner 2017). Our data provide insight into some of the most pressing demographic questions needed to understand repeated evolution: 1) whether there are independent origins of *Astyanax* cavefish, 2) the age of cave invasions, 3) the amount of gene flow between populations, and 4) the strength of selection needed to shape traits. Genomic resequencing allowed an understanding not afforded by mitochondrial or reduced representation nuclear sequencing, and we were able to identify genes and a region of the genome potentially affected by gene flow between populations. Together, these findings provide a framework for understanding the repeated evolution of many complex, cave-derived traits.

Cave populations are younger than previously estimated

Our estimates fit in well with previous suggestions that the caves were colonized in the late Pleistocene (Awise & Selander 1972; Fumey *et al.* 2018; Porter *et al.* 2007; Strecker *et al.* 2004) with both our d_{XY} – based divergence estimation and demographic modelling. As our work documents extensive gene flow, we favor the divergence time estimates provided by demographic models that incorporated estimates of migration. Demographic models estimate split time between the two lineages at approximately 257k generations ago, and estimates of cave-surface population splits are ~161k - 191k generations ago. Notably, *Astyanax* is a species of fish with a limited distribution in northern latitudes, with its current most northern locality in the Edwards Plateau in Texas (Page & Burr 2011). These split times are consistent with cooler temperatures in Northern Mexico associated with glaciation playing some role in the colonization of the caves by *Astyanax mexicanus*, potentially as thermally-stable refugia (Cussac *et al.* 2009). Our nuclear genomic data suggest that the “old” and “new” lineage split is more recent than the main volcanic activity of the Trans-Mexican Volcanic Belt (3–12 Mya) which was thought to have separated these two lineages, as well as other lineages in other vertebrates (Ornelas-García *et al.* 2008). This geographic barrier likely has been breached by *Astyanax* multiple times and likely led to cave invasions with each migration (Gross 2012; Hausdorf *et al.* 2011; Strecker *et al.* 2012).

Historic and contemporary gene flow between most populations

Several cave populations exhibit intermediate phenotypes and experience flooding during the rainy season (Espinasa, unpublished, Strecker *et al.* 2012), suggesting that intermediate phenotypes are the result of admixture between cavefish and surface fish swept into caves during flooding (Avisé & Selander 1972; Bradic *et al.* 2012). However, it has been suggested that surface fish and hybrids are too maladapted to survive and spawn in caves (Coghill *et al.* 2014; Hausdorf *et al.* 2011; Strecker *et al.* 2012), and that cavefish populations with intermediate troglomorphic phenotypes represent more recent cave invasions, rather than hybrids (Hausdorf *et al.* 2011; Strecker *et al.* 2012). Despite evidence from microsatellites (Bradic *et al.* 2012; Panaram & Borowsky 2005), mitochondrial capture (Dowling *et al.* 2002; Ornelas-García & Pedraza-Lara 2015; Yoshizawa *et al.* 2012a), and haplotype sharing of candidate loci (but see Espinasa *et al.* 2014c; Gross & Wilkens 2013), there was still uncertainty in the literature regarding the frequency of gene flow between *Astyanax* cavefish and surface fish and the role gene flow may play in adaptation to the cave environment (Coghill *et al.* 2014; Espinasa & Borowsky 2001; Hausdorf *et al.* 2011; Strecker *et al.* 2012).

Our work demonstrates recent and historical gene flow between cave and surface populations both within and between lineages (Figures. 2, 3). This result is also suggested by past work which showed most genetic variance is within individuals (Table 2 in (Bradic *et al.* 2012)) and very few private alleles (i.e., alleles specific to a population) were present among cave populations (Figure 3b in (Bradic *et al.* 2012)). Notably, many of the methods we employed take into account incomplete lineage sorting, are robust to non-equilibrium demographic scenarios, and detect recent admixture (< 500 generations ago) (Patterson *et al.* 2012). In all our analyses the hybridization detected may not be between these sampled populations directly, but unsampled populations/lineages related to them (Patterson *et al.* 2012).

One of the most intensely studied cave populations is Pachón. Our data of Pachón cavefish hybridization with the new lineage is expected from past field observations and molecular data. Only extremely troglomorphic fish were found early (1940's-1970's; Avisé & Selander 1972; Mitchell *et al.* 1977) and late (1996–2000, (Dowling *et al.* 2002)) surveys, though, phenotypically intermediate fish were observed in 1986–1988, as well as in 2008 (Borowsky, unpublished). Thus, subterranean introgression from a nearby cave population may cause transient complementation of phenotypes or hybridization with surface fish (from flooding or human-introduction) may contribute to the presence of intermediate-phenotype fish in the cave (Langecker *et al.* 1991; Wilkens & Strecker 2017). Indeed, past studies suggested gene flow between Pachón and the new lineage populations, as Pachón mtDNA clusters with new lineage populations (Dowling *et al.* 2002; Ornelas-García *et al.* 2008; Ornelas-García & Pedraza-Lara 2015; Strecker *et al.* 2003; Strecker *et al.* 2012). Interestingly and divergent from past studies, Pachón mitochondria group with old-lineage populations in the most recent analysis (Coghill *et al.* 2014). Continued intense scrutiny of other caves may reveal similar fluctuations in phenotypes and genotypes.

The most surprising signal of gene flow in our data is seen in the pairwise analyses, in which the signal of Molino-Tinaja exchange is similar to that from Pachón-Tinaja, suggesting subterranean gene flow between all three caves, despite substantial geographic distances (the

entrances are separated by >100km; Mitchell *et al.* 1977). While our genome-wide ancestry proportion data suggest some exchange of Molino with Tinaja (Figure S5–S7), we have no other evidence to corroborate this signal. Thus, the results from population demography could be picking up a signal of Molino with Tinaja that is actually driven by Pachón - new lineage hybridization and subsequent Tinaja – Pachón hybridization or Tinaja - Río Choy hybridization. Also, surprisingly, a i analyses suggest that some of the highest migration occurs from Tinaja cave into Rascón surface and Molino cave into Río Choy surface.

Notably, many species of troglobites other than *Astyanax* inhabit caves spanning from southern El Abra to Sierra de Guatemala, and some were able to migrate among these areas within the last 12,000 years (Espinasa *et al.* 2014a). Due to the extensive connectivity and the span of geological changes throughout the hydrogeological history, it is likely that there have been ample opportunities for troglobites, including *Astyanax*, to migrate across much of the El Abra region (Espinasa & Espinasa 2015).

Across many systems genomic data has revealed reticulate evolution is much more common than previously thought (Abbott *et al.* 2016; Arnold & Kunte 2017; Brandvain *et al.* 2014; Dasmahapatra *et al.* 2012; Geneva *et al.* 2015; Malinsky *et al.* 2017; McGaugh & Noor 2012; Rougemont *et al.* 2017), and the ability of populations to maintain phenotypic differences despite secondary contact and hybridization is increasingly appreciated (Arnold & Kunte 2017; Fitzpatrick *et al.* 2015; Malinsky *et al.* 2017; Payseur & Rieseberg 2016). Thus, despite gene flow from the surface into caves, it is entirely possible that cave-like phenotypes can be maintained. Indeed, gene flow may help sustain cave populations from the effects of inbreeding (Åkesson *et al.* 2016; Ellstrand & Rieseberg 2016; Fitzpatrick *et al.* 2016; Frankham 2015; Kronenberger *et al.* 2017; Whiteley *et al.* 2015) or catalyze adaptation to the cave environment (sensu Clarkson *et al.* 2014; Meier *et al.* 2017; Richards & Martin 2017). Though the rates of gene flow between *Astyanax* populations is considerably less than that documented in other contemporary diverging fish lineages (coastal and marine anchovies, Le Moan *et al.* 2016; parasitic river and nonparasitic brook lampreys, Rougemont *et al.* 2017; benthic and dwarf limnetic lake whitefish, Rougeux *et al.* 2017; Atlantic and Mediterranean sea bass, Tine *et al.* 2014), they are similar to the historic gene flow between of polar bears into brown bears (Liu *et al.* 2014). Our data indicate hybridization between sampled lineages and suggest that cavefish are poised to be a strong contributor to understanding the role gene flow may play in repeated evolutionary adaptation.

Candidate genes shaped by gene flow

In some cases, we have evidence that particular alleles were transferred between caves, but are highly diverged from surface populations (Table S11, S13). This suggests that gene flow between caves may hasten adaptation to the cave environment and suggests that repeated evolution in this system may, in part, rely on standing genetic variation. Notably, scaffolds under the co-localizing QTL on Linkage Group 2 for many traits exhibit 1.5-fold enrichment for 5kb regions with lowest divergence across caves relative to genome-wide, suggesting parts of this QTL have spread throughout caves.

For genes with high similarity among caves and substantial divergence between cave and surface populations, many appeared to be involved in classic cavefish traits such as pigmentation and eye development/morphology (*mdkb*, *atp6v0ca*, *ube2d2l*, *usp3*, *cln8*) and circadian functioning (*usp2a*) (Table S13). Additional common annotations suggest future areas of trait investigation, namely cardiac-related phenotypes (*mmd2*, *cyp26a1*, *tbx3a*, *tnfsf10*, *alx1*, *ptgr1*) as well as inner ear phenotypes (*ncs1a*, *dlx6a*, *fam136a*) (Table S13). Importantly, the sensory hair cells of the inner ear are homologous with sensory hair cells of the neuromasts of the lateral line (Fay & Popper 2000), therefore, these genes may be impacting mechanoreception or sound reception.

Effective population sizes are much larger than expected and weak selection can drive cave phenotypes

Previous estimates of very small effective population sizes in cave populations of *A. mexicanus* suggested drift and relaxed selection shaped cave-derived phenotypes (e.g., Lahti *et al.* 2009). The estimates of nucleotide diversity and N_e provided here (Tables 1, 2, S8) indicated that positive selection coefficients need not be extreme to drive cave-derived traits (Akashi *et al.* 2012; Charlesworth 2009). To put these values in perspective, the cave populations have an average genetic diversity (which is proportional to N_e) somewhat similar to humans and the surface populations exhibit a similar genetic diversity to zebrafish (Leffler *et al.* 2012).

Our observations support theoretical and empirical results that selection likely shaped cavefish phenotypes (Borowsky 2015; Cartwright *et al.* 2017; Moran *et al.* 2015). Simulations using demographic parameters from Molino and Tinaja cave populations suggest that selection coefficients across 12 additive loci (patterned after the number of eye-related QTL (O'Quin & McGaugh 2015)) need to be above 0.01 to bring cave-alleles to very high frequencies (Figure 4). Such selection coefficients are often found driving selective sweeps in natural systems (Nair *et al.* 2003; Rieseberg & Burke 2001; Schlenke & Begun 2004; Wootton *et al.* 2002).

Diverging lineages should be examined with reticulation methods and absolute divergence metrics

Our genome-wide data allowed a unique perspective that was not available in past studies. First, our data represent an empirical demonstration of how well-supported phylogenetic reconstructions can be misleading. When using genome-scale data with maximum likelihood, bootstrap values are not a measure of the number of sites that support a particular phylogeny, though, this is often how they are interpreted (Yang & Rannala 2012). Rather, if a genome-scale dataset is slightly more supportive of a particular topology, maximum likelihood will find that topology consistently and exhibit high levels of bootstrap support (Yang & Rannala 2012). With the cavefish, a previous RADseq study suggested relatively strongly supported branches (Coghill *et al.* 2014), however, a much more complex evolutionary history with reticulation among lineages was revealed here. Examination of recently diverged taxa with reticulation methods (e.g., Phylonet, F_4 , F_3 , TreeMix) may ensure a more comprehensive view of their evolutionary history than the successive bifurcations represented in a tree.

Second, our dataset is yet another empirical demonstration of poor performance of pairwise F_{ST} in estimating population relationships when diversity is highly heterogeneous among populations (Figure 5, Tables 2, S14; Fumey *et al.* 2018; Jakobsson *et al.* 2013). When diversity is highly heterogeneous, this can give the false impression that low-diversity populations are highly divergent, when in reality the lower diversity drives greater pairwise F_{ST} , not higher absolute divergence (Charlesworth 1998). These limitations of F_{ST} are especially important to appreciate in systems like the cavefish where diversity is highly heterogeneous across populations. Further, it is often suggested that high F_{ST} translates to low gene flow, but violations of the assumptions are common (Cruickshank & Hahn 2014). In the case of Molino (a very low diversity population), high F_{ST} values were taken to indicate relative isolation from other populations with little gene flow (Bradic *et al.* 2012), and we show here that is not the case. Indeed, pairwise F_{ST} among surface fish populations is the lowest and pairwise F_{ST} among caves is the highest, yet, absolute divergence between surface populations is slightly higher than absolute divergence among caves (Figure 5, Tables 2, S14). Future molecular ecology work should assay diversity and interpret pairwise F_{ST} accordingly or use absolute measures of divergence in conjunction with pairwise F_{ST} (Charlesworth 1998; Cruickshank & Hahn 2014; Noor & Bennett 2009; Ritz & Noor 2016).

Conclusion

In conclusion, our results suggest that investigations of repeated evolution of cave-derived traits should take into account hybridization between lineages, between cave and surface fish, and between caves. Due to gene flow, best practices to assign the putative ancestral character state of cave-derived traits include comparing cavefish phenotypes to multiple surface populations and a distantly related outgroup with no evidence of admixture (e.g. *Astyanax bimaculatus*, Ornelas-García *et al.* 2008). Complementation crosses and molecular studies remain essential for understanding evolutionary origins for each cave-derived trait (Borowsky 2008b; Gross *et al.* 2009; O'Quin *et al.* 2015; Protas *et al.* 2006; Wilkens 1971; Wilkens & Strecker 2003).

We expect future work with greatly expanded sampling (Beerli 2004; Hellenthal *et al.* 2014; Pease & Hahn 2015; Slatkin 2005) and ecological parameterization of the caves to provide a more comprehensive view of the ultimate drivers of demography of *Astyanax mexicanus* cavefish. Interestingly, many caves are nutrient-limited which is suggested to be one of the largest impediments to surface fish survival in the cave environment (Espinasa *et al.* 2014b; Moran *et al.* 2014). One of the emerging hypotheses is that high food availability allows surface-like fish to persist longer in the cave environment and enhances the probability for cave-surface hybridization (Mitchell *et al.* 1977; Strecker *et al.* 2012). Future studies evaluating hybridization levels in relation to food-availability or food-predictability are an important next step to examine drivers of cave phenotypes. We look forward to these future studies, and their potential to elucidate how demography and environmental factors impact repeated adaptive evolution (*sensu* Rosenblum *et al.* 2014).

Supplementary Material

Refer to Web version on PubMed Central for supplementary material.

Acknowledgments

Fish were collected under CONAPESCA permit PPF/DGOPA - 106 / 2013 to Claudia Patricia Ornelas García and SEMARNAT permit 02241 to Ernesto Maldonado. We thank the Mexican government for providing the collecting permit to R.B. in 2008 (DGOPA.00570.288108–0291). For 2002, the collection permit to R.B. was from fisheries department #01.01.02.613.03.1799 Molino samples were obtained under Mexican permit 040396-213-05. Animal care protocol numbers include #05–1235 by the New York University Animal Welfare Committee (UAWC) to R.B., UMD R-17–77 to WRJ, and UNAM animal care protocol to POG NOM-062-ZOO-1999. This work was supported by NIH grant 2R24OD011198-04A1 to WCW, The Genome Institute at Washington University School of Medicine, Cave Research Foundation Graduate Student Research Grant to BMC, a grant from the Eppley Foundation for Research to SEM, 5R01EY014619-08 to WRJ, and 1R01GM127872-01 to SEM and ACK. Raw sequence data were submitted to the SRA. Project Accession Number: SRP046999, Bioproject: PRJNA260715. We appreciate the resources provided by the Minnesota Supercomputing Institute, without which this work would not be possible.

References cited

- Abbott RJ, Barton NH, Good JM (2016) Genomics of hybridization and its evolutionary consequences. *Molecular ecology* 25, 2325–2332. [PubMed: 27145128]
- Agrawal AA (2017) Toward a predictive framework for convergent evolution: integrating natural history, genetic mechanisms, and consequences for the diversity of life. *The American Naturalist* 190, S1–S12.
- Åkesson M, Liberg O, Sand H, et al. (2016) Genetic rescue in a severely inbred wolf population. *Molecular ecology* 25, 4745–4756. [PubMed: 27497431]
- Alexander DH, Lange K (2011) Enhancements to the ADMIXTURE algorithm for individual ancestry estimation. *BMC bioinformatics* 12, 1. [PubMed: 21199577]
- Alexander DH, Novembre J, Lange K (2009) Fast model-based estimation of ancestry in unrelated individuals. *Genome research* 19, 1655–1664. [PubMed: 19648217]
- Arnold ML, Kunte K (2017) Adaptive genetic exchange: A tangled history of admixture and evolutionary innovation. *Trends in Ecology & Evolution*.
- Aspiras AC, Rohner N, Martineau B, Borowsky RL, Tabin CJ (2015) *Melanocortin 4 receptor* mutations contribute to the adaptation of cavefish to nutrient-poor conditions. *Proceedings of the National Academy of Sciences* 112, 9668–9673.
- Auweru GA, Carneiro MO, Hartl C, et al. (2013) From FastQ data to high-confidence variant calls: The genome analysis toolkit best practices pipeline. *Current protocols in bioinformatics*, 11.10. 11–11.10. 33.
- Avisé JC, Selander RK (1972) Evolutionary genetics of cave-dwelling fishes of the genus *Astyanax*. *Evolution*, 1–19. [PubMed: 28555764]
- Beerli P (2004) Effect of unsampled populations on the estimation of population sizes and migration rates between sampled populations. *Molecular ecology* 13, 827–836. [PubMed: 15012758]
- Bibliowicz J, Alié A, Espinasa L, et al. (2013) Differences in chemosensory response between eyed and eyeless *Astyanax mexicanus* of the Rio Subterráneo cave. *EvoDevo* 4, 25–25. [PubMed: 24007672]
- Bierne N, Gagnaire P-A, David P (2013) The geography of introgression in a patchy environment and the thorn in the side of ecological speciation. *Current Zoology* 59, 72–86.
- Borowsky R (2008a) *Astyanax mexicanus*, the blind Mexican cave fish: A model for studies in development and morphology. *Cold Spring Harbor Protocols* 2008, pdb. em107.
- Borowsky R (2008b) Restoring sight in blind cavefish. *Current Biology* 18, R23–R24. [PubMed: 18177707]
- Borowsky R (2015) Regressive evolution: Testing hypotheses of selection and drift In: *Biology and Evolution of the Mexican Cavefish* (ed. Keene A, Yoshizawa M, McGaugh SE), p. 93 Elsevier, San Diego.
- Bradic M, Beerli P, León FG-d, Esquivel-Bobadilla S, Borowsky R (2012) Gene flow and population structure in the Mexican blind cavefish complex (*Astyanax mexicanus*). *BMC evolutionary biology* 12, 9. [PubMed: 22269119]

- Bradic M, Teotónio H, Borowsky RL (2013) The population genomics of repeated evolution in the blind cavefish *Astyanax mexicanus*. *Molecular biology and evolution* 30, 2383–2400. [PubMed: 23927992]
- Brandvain Y, Kenney AM, Flagel L, Coop G, Sweigart AL (2014) Speciation and introgression between *Mimulus nasutus* and *Mimulus guttatus*. *PLoS genetics* 10, e1004410. [PubMed: 24967630]
- Browning SR, Browning BL (2007) Rapid and accurate haplotype phasing and missing-data inference for whole-genome association studies by use of localized haplotype clustering. *The American Journal of Human Genetics* 81, 1084–1097. [PubMed: 17924348]
- Capella-Gutiérrez S, Silla-Martínez JM, Gabaldón T (2009) trimAl: a tool for automated alignment trimming in large-scale phylogenetic analyses. *Bioinformatics* 25, 1972–1973. [PubMed: 19505945]
- Charlesworth B (1998) Measures of divergence between populations and the effect of forces that reduce variability. *Molecular biology and evolution* 15, 538–543. [PubMed: 9580982]
- Clarkson CS, Weetman D, Essandoh J, et al. (2014) Adaptive introgression between *Anopheles* sibling species eliminates a major genomic island but not reproductive isolation. *Nature communications* 5.
- Coghill LM, Hulseley CD, Chaves-Campos J, García de Leon FJ, Johnson SG (2014) Next generation phylogeography of cave and surface *Astyanax mexicanus*. *Molecular Phylogenetics and Evolution* 79, 368–374. [PubMed: 25014568]
- Colosimo PF, Hosemann KE, Balabhadra S, et al. (2005) Widespread parallel evolution in sticklebacks by repeated fixation of ectodysplasin alleles. *Science* 307, 1928–1933. [PubMed: 15790847]
- Cresko WA, Amores A, Wilson C, et al. (2004) Parallel genetic basis for repeated evolution of armor loss in Alaskan threespine stickleback populations. *Proc Natl Acad Sci U S A* 101, 6050–6055. [PubMed: 15069186]
- Cruickshank TE, Hahn MW (2014) Reanalysis suggests that genomic islands of speciation are due to reduced diversity, not reduced gene flow. *Molecular ecology* 23, 3133–3157. [PubMed: 24845075]
- Cussac V, Fernández DA, Gómez SE, López HL (2009) Fishes of southern South America: a story driven by temperature. *Fish Physiology and Biochemistry* 35, 29–42. [PubMed: 19189234]
- Dasmahapatra KK, Walters JR, Briscoe AD, et al. (2012) Butterfly genome reveals promiscuous exchange of mimicry adaptations among species. *Nature* 487, 94. [PubMed: 22722851]
- DePristo MA, Banks E, Poplin R, et al. (2011) A framework for variation discovery and genotyping using next-generation DNA sequencing data. *Nature genetics* 43, 491–498. [PubMed: 21478889]
- Dowling TE, Martasian DP, Jeffery WR (2002) Evidence for multiple genetic forms with similar eyeless phenotypes in the blind cavefish, *Astyanax mexicanus*. *Molecular biology and evolution* 19, 446–455. [PubMed: 11919286]
- Duboué ER, Keene AC, Borowsky RL (2011) Evolutionary convergence on sleep loss in cavefish populations. *Current Biology* 21, 671–676. [PubMed: 21474315]
- Ellegren H (2014) Genome sequencing and population genomics in non-model organisms. *Trends in Ecology & Evolution* 29, 51–63. [PubMed: 24139972]
- Ellstrand NC, Rieseberg LH (2016) When gene flow really matters: gene flow in applied evolutionary biology. *Evolutionary applications* 9, 833–836. [PubMed: 27468301]
- Elmer KR, Meyer A (2011) Adaptation in the age of ecological genomics: insights from parallelism and convergence. *Trends in Ecology and Evolution* 26, 298–306. [PubMed: 21459472]
- Espinasa L, Bartolo ND, Newkirk CE (2014a) DNA sequences of troglobitic nicoletiid insects support Sierra de El Abra and the Sierra de Guatemala as a single biogeographical area: Implications for *Astyanax*. *Subterranean Biology* 13, 35.
- Espinasa L, Bibliowicz J, Jeffery WR, Rétaux S (2014b) Enhanced prey capture skills in *Astyanax* cavefish larvae are independent from eye loss. *EvoDevo* 5, 35. [PubMed: 25908953]
- Espinasa L, Borowsky RB (2001) Origins and relationship of cave populations of the blind Mexican tetra, *Astyanax fasciatus*, in the Sierra de El Abra. *Environmental Biology of Fishes* 62, 233–237.
- Espinasa L, Centone DM, Gross JB (2014c) A contemporary analysis of a loss-of-function of the *oculocutaneous albinism type II (Oca2)* allele within the Micos *Astyanax* cave fish population. *Speleobiology Notes* 6, 48–54.

- Espinasa L, Espinasa M (2015) Hydrogeology of caves in the Sierra de El Abra region In: *Biology and Evolution of the Mexican Cavefish*. (eds. Keene A, Yoshizawa M, McGaugh S), pp. 41–58. Elsevier San Diego.
- Espinasa L, Rivas-Manzano P, Pérez HE (2001) A new blind cave fish population of genus *Astyanax*: geography, morphology and behavior In: *The biology of hypogean fishes*, pp. 339–344. Springer.
- Falush D, van Dorp L, Lawson D (2016) A tutorial on how (not) to over-interpret STRUCTURE/ADMIXTURE bar plots. bioRxiv, 066431.
- Fay RR, Popper AN (2000) Evolution of hearing in vertebrates: the inner ears and processing. *Hearing research* 149, 1–10. [PubMed: 11033242]
- Fenner JN (2005) Cross-cultural estimation of the human generation interval for use in genetics-based population divergence studies. *American Journal of Physical Anthropology: The Official Publication of the American Association of Physical Anthropologists* 128, 415–423.
- Fitzpatrick S, Gerberich J, Kronenberger J, Angeloni L, Funk W (2015) Locally adapted traits maintained in the face of high gene flow. *Ecology Letters* 18, 37–47. [PubMed: 25363522]
- Fitzpatrick SW, Gerberich JC, Angeloni LM, et al. (2016) Gene flow from an adaptively divergent source causes rescue through genetic and demographic factors in two wild populations of Trinidadian guppies. *Evolutionary applications* 9, 879–891. [PubMed: 27468306]
- Frankham R (2015) Genetic rescue of small inbred populations: meta-analysis reveals large and consistent benefits of gene flow. *Molecular ecology* 24, 2610–2618. [PubMed: 25740414]
- Fumey J, Hinaux H, Noirot C, et al. (2018) Evidence for late Pleistocene origin of *Astyanax mexicanus* cavefish. *BMC evolutionary biology* 18, 43. [PubMed: 29665771]
- Geneva AJ, Muirhead CA, Kingan SB, Garrigan D (2015) A new method to scan genomes for introgression in a secondary contact model. *PloS one* 10, e0118621. [PubMed: 25874895]
- Gompel N, Prud'homme B (2009) The causes of repeated genetic evolution. *Developmental Biology* 332, 36–47. [PubMed: 19433086]
- Gross J, Wilkens H (2013) Albinism in phylogenetically and geographically distinct populations of *Astyanax* cavefish arises through the same loss-of-function *Oca2* allele. *Heredity* 111, 122–130. [PubMed: 23572122]
- Gross JB (2012) The complex origin of *Astyanax* cavefish. *BMC evolutionary biology* 12, 105. [PubMed: 22747496]
- Gross JB, Borowsky R, Tabin CJ (2009) A novel role for *Mclr* in the parallel evolution of depigmentation in independent populations of the cavefish *Astyanax mexicanus*. *PLoS genetics* 5, e1000326–e1000326. [PubMed: 19119422]
- Gutenkunst RN, Hernandez RD, Williamson SH, Bustamante CD (2009) Inferring the joint demographic history of multiple populations from multidimensional SNP frequency data. *PLoS genetics* 5, e1000695. [PubMed: 19851460]
- Hausdorf B, Wilkens H, Strecker U (2011) Population genetic patterns revealed by microsatellite data challenge the mitochondrial DNA based taxonomy of *Astyanax* in Mexico (Characidae, Teleostei). *Molecular Phylogenetics and Evolution* 60, 89–97. [PubMed: 21419231]
- Hellenthal G, Busby GB, Band G, et al. (2014) A genetic atlas of human admixture history. *Science* 343, 747–751. [PubMed: 24531965]
- Hoegg S, Brinkmann H, Taylor JS, Meyer A (2004) Phylogenetic timing of the fish-specific genome duplication correlates with the diversification of teleost fish. *Journal of Molecular Evolution* 59, 190–203. [PubMed: 15486693]
- Hudson RR (1990) Gene genealogies and the coalescent process. *Oxford surveys in evolutionary biology* 7, 44.
- Hudson RR, Kreitman M, Aguadé M (1987) A test of neutral molecular evolution based on nucleotide data. *Genetics* 116, 153–153. [PubMed: 3110004]
- Jaggard JB, Robinson BG, Stahl BA, et al. (2017) The lateral line confers evolutionarily derived sleep loss in the Mexican cavefish. *Journal of Experimental Biology* in press.
- Jaggard JB, Stahl BA, Lloyd E, et al. (2018) Hypocretin underlies the evolution of sleep loss in the Mexican cavefish. *eLife* 7.

- Jakobsson M, Edge MD, Rosenberg NA (2013) The relationship between FST and the frequency of the most frequent allele. *Genetics* 193, 515–528. [PubMed: 23172852]
- Jeffery WR (2001) Cavefish as a model system in evolutionary developmental biology. *Developmental Biology* 231, 1–12. [PubMed: 11180948]
- Jeffery WR (2009) Chapter 8: Evolution and development in the cavefish *Astyanax*. *Current Topics in Developmental Biology* 86, 191–221. [PubMed: 19361694]
- Keene A, Yoshizawa M, McGaugh SE (2015) *Biology and Evolution of the Mexican Cavefish*. Elsevier: Academic Press.
- Kowalko JE, Rohner N, Linden TA, et al. (2013a) Convergence in feeding posture occurs through different genetic loci in independently evolved cave populations of *Astyanax mexicanus*. *Proceedings of the National Academy of Sciences USA* 110, 16933–16938.
- Kowalko JE, Rohner N, Rompani SB, et al. (2013b) Loss of schooling behavior in cavefish through sight-dependent and sight-independent mechanisms. *Current Biology* 23, 1874–1883. [PubMed: 24035545]
- Krishnan J, Rohner N (2017) Cavefish and the basis for eye loss. *Philosophical Transactions Royal Society B* 372, 20150487.
- Kronenberger J, Funk W, Smith J, et al. (2017) Testing the demographic effects of divergent immigrants on small populations of Trinidadian guppies. *Animal Conservation* 20, 3–11.
- Langecker TG, Wilkens H, Junge P (1991) Introgressive hybridization in the Pachon Cave population of *Astyanax fasciatus* (Teleostei: Characidae). *Ichthyological exploration of freshwaters. Munchen* 2, 209–212.
- Le Moan A, Gagnaire PA, Bonhomme F (2016) Parallel genetic divergence among coastal–marine ecotype pairs of European anchovy explained by differential introgression after secondary contact. *Molecular ecology* 25, 3187–3202. [PubMed: 27027737]
- Li H (2013) Aligning sequence reads, clone sequences and assembly contigs with BWA-MEM. arXiv preprint arXiv:1303.3997.
- Li H, Durbin R (2009) Fast and accurate short read alignment with Burrows–Wheeler transform. *Bioinformatics* 25, 1754–1754. [PubMed: 19451168]
- Li H, Durbin R (2010) Fast and accurate long-read alignment with Burrows–Wheeler transform. *Bioinformatics* 26, 589–589. [PubMed: 20080505]
- Liu S, Lorenzen ED, Fumagalli M, et al. (2014) Population genomics reveal recent speciation and rapid evolutionary adaptation in polar bears. *Cell* 157, 785–794. [PubMed: 24813606]
- Lohse M, Bolger A, Nagel A, et al. (2012) RobiNA: a user-friendly, integrated software solution for RNA-Seq-based transcriptomics. *Nucleic Acids Research* 40(Web Server issue), W622–627. [PubMed: 22684630] ()
- Losos JB (2011) Convergence, adaptation, and constraint. *Evolution* 65, 1827–1840. [PubMed: 21729041]
- Lowry DB, Hoban S, Kelley JL, et al. (2016) Breaking RAD: An evaluation of the utility of restriction site associated DNA sequencing for genome scans of adaptation. *Molecular Ecology Resources* 17, 142–152. [PubMed: 27860289]
- Malinsky M, Svardal H, Tyers AM, et al. (2017) Whole genome sequences of Malawi cichlids reveal multiple radiations interconnected by gene flow. *bioRxiv*, 143859.
- Mallet J, Besansky N, Hahn MW (2016) How reticulated are species? *Bioessays* 38, 140–149. [PubMed: 26709836]
- Martin M (2011) Cutadapt removes adapter sequences from high-throughput sequencing reads. *EMBnet.journal* 17, 10.
- McGaugh SE, Gross JB, Aken B, et al. (2014) The cavefish genome reveals candidate genes for eye loss. *Nature communications* 5, 5307–5307.
- McGaugh SE, Noor MAF (2012) Genomic impacts of chromosomal inversions in parapatric *Drosophila* species. *Philosophical Transactions of the Royal Society B* 367, 422–429.
- McKenna A, Hanna M, Banks E, et al. (2010) The Genome Analysis Toolkit: A MapReduce framework for analyzing next-generation DNA sequencing data. *Genome research* 20, 1297–1303. [PubMed: 20644199]

- Meier JI, Marques DA, Mwaiko S, et al. (2017) Ancient hybridization fuels rapid cichlid fish adaptive radiations. *Nature communications* 8, 14363.
- Meyer A, Van de Peer Y (2005) From 2R to 3R: Evidence for a fish-specific genome duplication (FSGD). *Bioessays* 27, 937–945. [PubMed: 16108068]
- Mitchell RW, Russell WH, Elliott WR (1977) Mexican eyeless characin fishes, genus *Astyanax*: Environment, distribution, and evolution Texas Tech Press, Texas.
- Moran D, Softley R, Warrant EJ (2014) Eyeless Mexican cavefish save energy by eliminating the circadian rhythm in metabolism. *PLoS one* 9, e107877–e107877. [PubMed: 25251018]
- Nair S, Williams JT, Brockman A, et al. (2003) A selective sweep driven by pyrimethamine treatment in southeast asian malaria parasites. *Molecular biology and evolution* 20, 1526–1536. [PubMed: 12832643]
- Nei M (1987) *Molecular Evolutionary Genetics* Columbia University Press, New York.
- Noor MAF, Bennett SM (2009) Islands of speciation or mirages in the desert? Examining the role of restricted recombination in maintaining species. *Heredity* 103, 439–444. [PubMed: 19920849]
- O'Quin KE, Yoshizawa M, Doshi P, Jeffery WR (2013) Quantitative genetic analysis of retinal degeneration in the blind cavefish *Astyanax mexicanus*. *PLoS one* 8, e57281. [PubMed: 23437360]
- O'Quin K, McGaugh SE (2015) The genetic bases of troglomorphy in *Astyanax*: How far we have come and where do we go from here? In: *Biology and Evolution of the Mexican Cavefish* (ed. A. Keene MY, McGaugh SE). Elsevier.
- O'Quin KE, Doshi P, Lyon A, et al. (2015) Complex evolutionary and genetic patterns characterize the loss of scleral ossification in the blind cavefish *Astyanax mexicanus*. *PLoS one* 10, e0142208. [PubMed: 26649887]
- Ornelas-García CP, Domínguez-Domínguez O, Doadrio I (2008) Evolutionary history of the fish genus *Astyanax* Baird & Girard (1854)(Actinopterygii, Characidae) in Mesoamerica reveals multiple morphological homoplasies. *BMC evolutionary biology* 8, 340. [PubMed: 19102731]
- Ornelas-García CP, Pedraza-Lara C (2015) Phylogeny and evolutionary history of *A. mexicanus* In: *Biology and Evolution of the Mexican Cavefish* (ed. Keene A Y M McGaugh SE). Elsevier, San Diego.
- Page LM, Burr BM (2011) *Peterson field guide to freshwater fishes of North America north of Mexico* Houghton Mifflin Harcourt, Boston, Massachusetts, USA.
- Panaram K, Borowsky R (2005) Gene flow and genetic variability in cave and surface populations of the Mexican tetra, *Astyanax mexicanus* (Teleostei: Characidae). *Copeia* 2005, 409–416.
- Paradis E, Claude J, Strimmer K (2004) APE: analyses of phylogenetics and evolution in R language. *Bioinformatics* 20, 289–290. [PubMed: 14734327]
- Patterson N, Moorjani P, Luo Y, et al. (2012) Ancient admixture in human history. *Genetics* 192, 1065–1093. [PubMed: 22960212]
- Payseur BA, Rieseberg LH (2016) A genomic perspective on hybridization and speciation. *Molecular ecology* 25, 2337–2360. [PubMed: 26836441]
- Pease J, Rosenzweig B (2015) Encoding data using biological principles: the Multisample Variant Format for phylogenomics and population genomics. *IEEE/ACM transactions on computational biology and bioinformatics/IEEE, ACM*.
- Pease JB, Hahn MW (2015) Detection and polarization of introgression in a five-taxon phylogeny. *Systematic biology* 64, 651–662. [PubMed: 25888025]
- Peter BM (2016) Admixture, population structure, and F-statistics. *Genetics* 202, 1485–1501. [PubMed: 26857625]
- Pickrell JK, Pritchard JK (2012) Inference of population splits and mixtures from genome-wide allele frequency data. *PLoS genetics* 8, e1002967. [PubMed: 23166502]
- Porter ML, Dittmar K, Pérez-Losada M (2007) How long does evolution of the troglomorphic form take? Estimating divergence times in *Astyanax mexicanus*. *Acta Carsologica* 36.
- Protas M, Conrad M, Gross JB, Tabin C, Borowsky R (2007) Regressive evolution in the Mexican cave tetra, *Astyanax mexicanus*. *Current Biology* 17, 452–454. [PubMed: 17306543]
- Protas M, Hersey C, Kochanek D, et al. (2006) Genetic analysis of cavefish reveals molecular convergence in the evolution of albinism. *Nature genetics* 38, 107–111. [PubMed: 16341223]

- Protas M, Jeffery WR (2012) Evolution and development in cave animals: from fish to crustaceans. *WIREs Developmental Biology* 1, 823–845. [PubMed: 23580903]
- Protas M, Tabansky I, Conrad M, et al. (2008) Multi-trait evolution in a cave fish, *Astyanax mexicanus*. *Evolution and Development* 10, 196–209. [PubMed: 18315813]
- Reich D, Thangaraj K, Patterson N, Price AL, Singh L (2009) Reconstructing Indian population history. *Nature* 461, 489–494. [PubMed: 19779445]
- Requena T, Cabrera S, Martín-Sierra C, et al. (2014) Identification of two novel mutations in FAM136A and DTNA genes in autosomal-dominant familial Meniere’s disease. *Human molecular genetics* 24, 1119–1126. [PubMed: 25305078]
- Richards EJ, Martin CH (2017) Adaptive introgression from distant Caribbean islands contributed to the diversification of a microendemic adaptive radiation of trophic specialist pupfishes. *PLoS genetics* 13, e1006919. [PubMed: 28796803]
- Riddle MR, Aspiras AC, Gaudenz K, et al. (2018) Insulin resistance in cavefish as an adaptation to a nutrient-limited environment. *Nature* 555, 647. [PubMed: 29562229]
- Rieseberg LH, Burke JM (2001) The biological reality of species: gene flow, selection, and collective evolution. *Taxon*, 47–67.
- Ritz KR, Noor MA (2016) Mistaken identity: Another bias in the use of relative genetic divergence measures for detecting interspecies introgression. *PloS one* 11, e0165032. [PubMed: 27760228]
- Roesti M, Gavrillets S, Hendry AP, Salzburger W, Berner D (2014) The genomic signature of parallel adaptation from shared genetic variation. *Molecular ecology* 23, 3944–3956. [PubMed: 24635356]
- Rosenblum EB, Parent CE, Brandt EE (2014) The molecular basis of phenotypic convergence. *Annual Review of Ecology, Evolution, and Systematics* 45, 203–226.
- Rougemont Q, Gagnaire PA, Perrier C, et al. (2017) Inferring the demographic history underlying parallel genomic divergence among pairs of parasitic and nonparasitic lamprey ecotypes. *Molecular ecology* 26, 142–162. [PubMed: 27105132]
- Rougeux C, Bernatchez L, Gagnaire P-A (2017) Modeling the multiple facets of speciation-with-gene-flow toward inferring the divergence history of lake whitefish species pairs (*Coregonus clupeaformis*). *Genome biology and evolution* 9, 2057–2074. [PubMed: 28903535]
- Salin K, Voituron Y, Mourin J, Hervant F (2010) Cave colonization without fasting capacities: An example with the fish *Astyanax fasciatus mexicanus*. *Comparative Biochemistry and Physiology Part A: Molecular & Integrative Physiology* 156, 451–457.
- Schlenke TA, Begun DJ (2004) Strong selective sweep associated with a transposon insertion in *Drosophila simulans*. *Proc Natl Acad Sci U S A* 101, 1626–1631. [PubMed: 14745026]
- Slatkin M (2005) Seeing ghosts: the effect of unsampled populations on migration rates estimated for sampled populations. *Molecular ecology* 14, 67–73. [PubMed: 15643951]
- Stamatakis A (2014) RAxML version 8: a tool for phylogenetic analysis and post-analysis of large phylogenies. *Bioinformatics* 30, 1312–1313. [PubMed: 24451623]
- Stern DL (2013) The genetic causes of convergent evolution. *Nature Reviews Genetics* 14, 751.
- Stern DL, Orgogozo V (2009) Is genetic evolution predictable? *Science* 323, 746–751. [PubMed: 19197055]
- Strecker U, Bernatchez L, Wilkens H (2003) Genetic divergence between cave and surface populations of *Astyanax* in Mexico (Characidae, Teleostei). *Molecular ecology* 12, 699–710. [PubMed: 12675825]
- Strecker U, Faúndez VH, Wilkens H (2004) Phylogeography of surface and cave *Astyanax* (Teleostei) from Central and North America based on *cytochrome b* sequence data. *Molecular Phylogenetics and Evolution* 33, 469–481. [PubMed: 15336680]
- Strecker U, Hausdorf B, Wilkens H (2012) Parallel speciation in *Astyanax* cave fish (Teleostei) in Northern Mexico. *Molecular Phylogenetics and Evolution* 62, 62–70. [PubMed: 21963344]
- Team RC (2014) R: A language and environment for statistical computing In: R Foundation for Statistical Computing.
- Tine M, Kuhl H, Gagnaire P-A, et al. (2014) European sea bass genome and its variation provide insights into adaptation to euryhalinity and speciation. *Nature communications* 5, 5770.

- Van Belleghem S, Vangestel C, De Wolf K, et al. (2018) Evolution at two time frames: polymorphisms from an ancient singular divergence event fuel contemporary parallel evolution. *bioRxiv*, 255554.
- Varatharasan N, Croll RP, Franz-Odenaal T (2009) Taste bud development and patterning in sighted and blind morphs of *Astyanax mexicanus*. *Developmental Dynamics* 238, 3056–3064. [PubMed: 19877280]
- Wagenmakers E-J, Farrell S (2004) AIC model selection using Akaike weights. *Psychonomic bulletin & review* 11, 192–196. [PubMed: 15117008]
- Welch JJ, Jiggins CD (2014) Standing and flowing: the complex origins of adaptive variation. *Molecular ecology* 23, 3935–3937. [PubMed: 25088550]
- Whiteley AR, Fitzpatrick SW, Funk WC, Tallmon DA (2015) Genetic rescue to the rescue. *Trends in Ecology & Evolution* 30, 42–49. [PubMed: 25435267]
- Wilkens H (1971) Genetic interpretation of regressive evolutionary processes: studies on hybrid eyes of two *Astyanax* cave populations (Characidae, Pisces). *Evolution* 25, 530–544. [PubMed: 28565030]
- Wilkens H, Strecker U (2003) Convergent evolution of the cavefish *Astyanax* (Characidae, Teleostei): genetic evidence from reduced eye-size and pigmentation. *Biological Journal of the Linnean Society* 80, 545–554.
- Wilkens H, Strecker U (2017) *Evolution in the Dark* Springer.
- Wootton JC, Feng X, Ferdig MT, et al. (2002) Genetic diversity and chloroquine selective sweeps in *Plasmodium falciparum*. *Nature* 418, 320. [PubMed: 12124623]
- Yamamoto Y, Byerly MS, Jackman WR, Jeffery WR (2009) Pleiotropic functions of embryonic *sonic hedgehog* expression link jaw and taste bud amplification with eye loss during cavefish evolution. *Developmental Biology* 330, 200–211. [PubMed: 19285488]
- Yang Z, Rannala B (2012) Molecular phylogenetics: principles and practice. *Nature Reviews Genetics* 13, 303–314.
- Yoshizawa M, Ashida G, Jeffery DE (2012a) Parental genetic effects in a cavefish adaptive behavior explain disparity between nuclear and mitochondrial DNA. *Evolution* 66, 2975–2982. [PubMed: 22946818]
- Yoshizawa M, Gori ki Š, Soares D, Jeffery WR (2010) Evolution of a behavioral shift mediated by superficial neuromasts helps cavefish find food in darkness. *Current Biology* 20, 1631–1636. [PubMed: 20705469]
- Yoshizawa M, Robinson B, Duboue ER, et al. (2015) Distinct genetic architecture underlies the emergence of sleep loss and prey-seeking behavior in the Mexican cavefish. *BMC Biology* 13, 1. [PubMed: 25555396]
- Yoshizawa M, Yamamoto Y, O’Quin KE, Jeffery WR (2012b) Evolution of an adaptive behavior and its sensory receptors promotes eye regression in blind cavefish. *BMC Biology* 10, 108. [PubMed: 23270452]

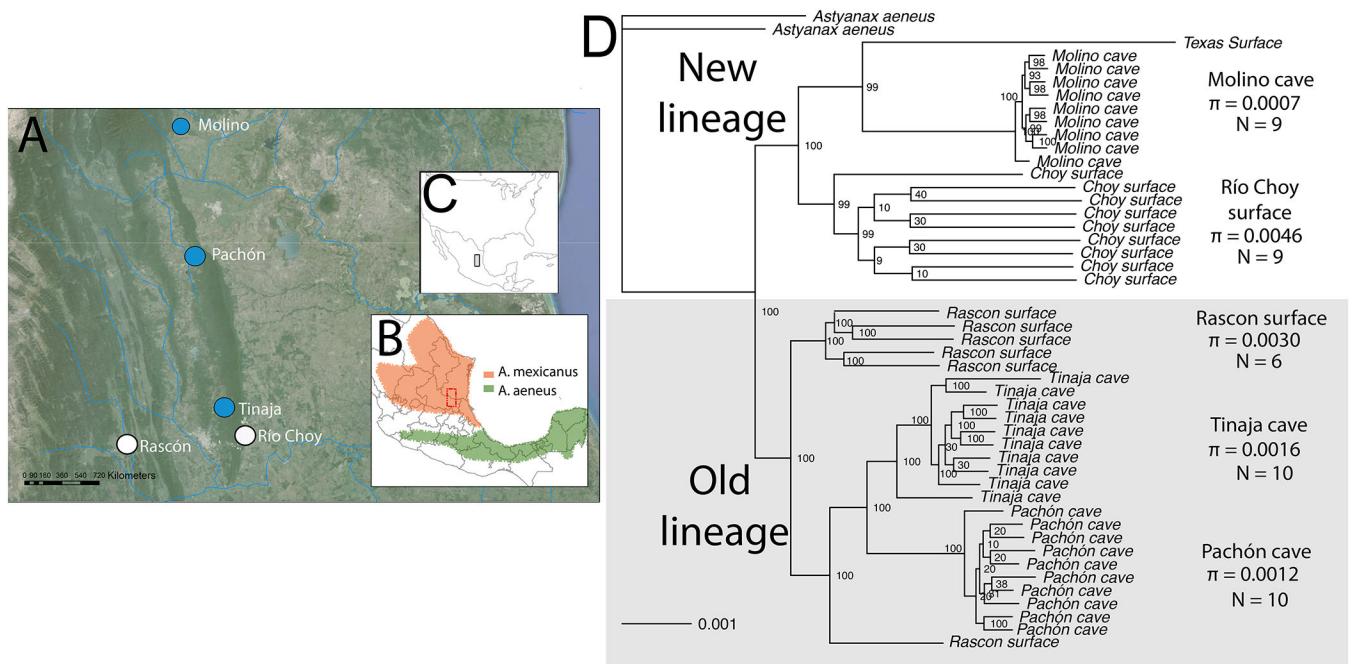
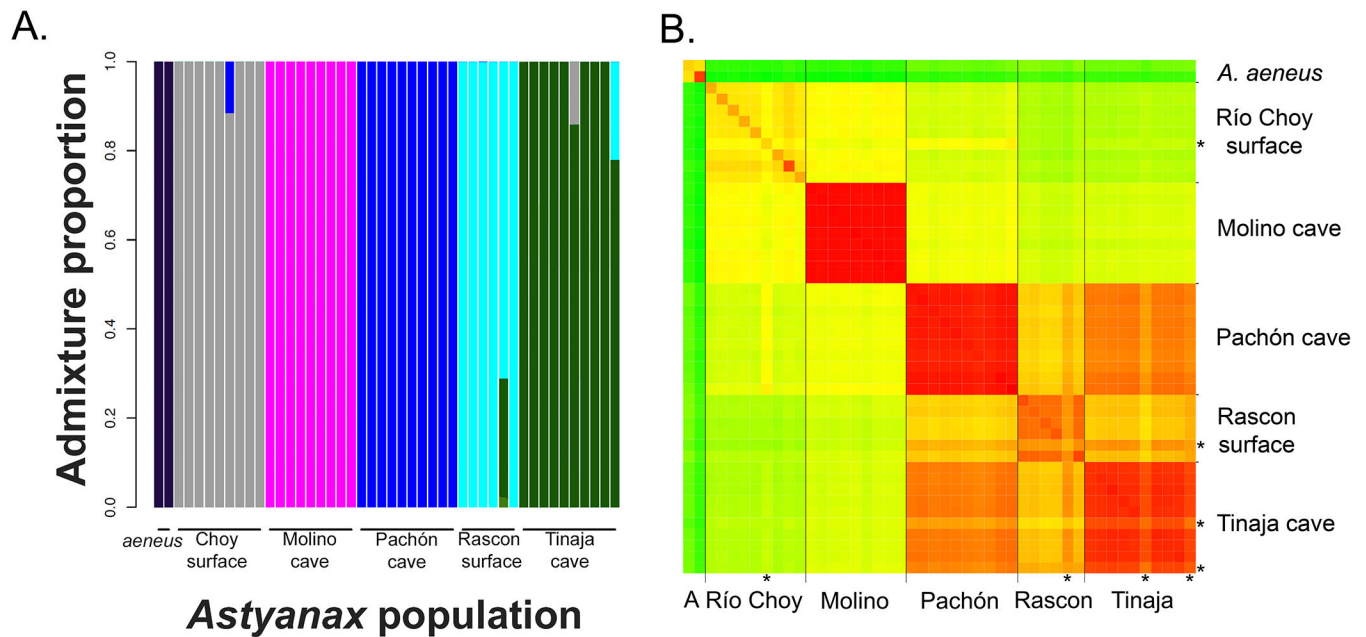


Figure 1:
 (a) Map of caves (blue), surface populations (white). (b) Location of *A. mexicanus* range (peach) with sampled area in red box and *A. aeneus* range (green), (c) Location in North and Central America of the focal sampled area. Map adapted from (Ornelas-García & Pedraza-Lara, 2015). (d) Phylogenetic inference from the largest scaffolds that comprised approximately 50% of the genome using a maximum-likelihood tree search and 100 bootstrap replicates in RAxML v8.2.8 (Stamatakis, 2014). π is a genomewide average, not excluding admixed individuals. Old lineage and new lineage populations delineated by past studies are strongly supported. Branch-lengths correspond to phylogenetic distance and confirm cave populations (especially Molino cave) are less diverse than surface populations.



Astyanax population

Figure2:

(a) ADMIXTURE analysis suggests contemporary gene flow between old and new lineages and cave and surface populations. Analysis was performed on the thinned Biallelic SNP VCF to account for linkage disequilibrium between SNPs. We were interested in the relationships among the five nominal populations and the putative outgroup rather than an unknown, best-supported number of clusters, thus, we set the clusters to six. Additional analyses performed with other cluster numbers are given in the supplementary material. (b) Pairwise nucleotide similarity (e.g., d_{XY} , π) between all sampled individuals for fourfold degenerate sites genome-wide. Green = less similar, Red = more similar. Particular individuals potentially exhibiting admixture are indicated with an asterisk (e.g., Rascon 6, Tinaja 6, Río Choy 14, Tinaja E [bottom right corner]). *Astyanax aeneus* is represented by two total samples and indicated by the A on the x-axis.

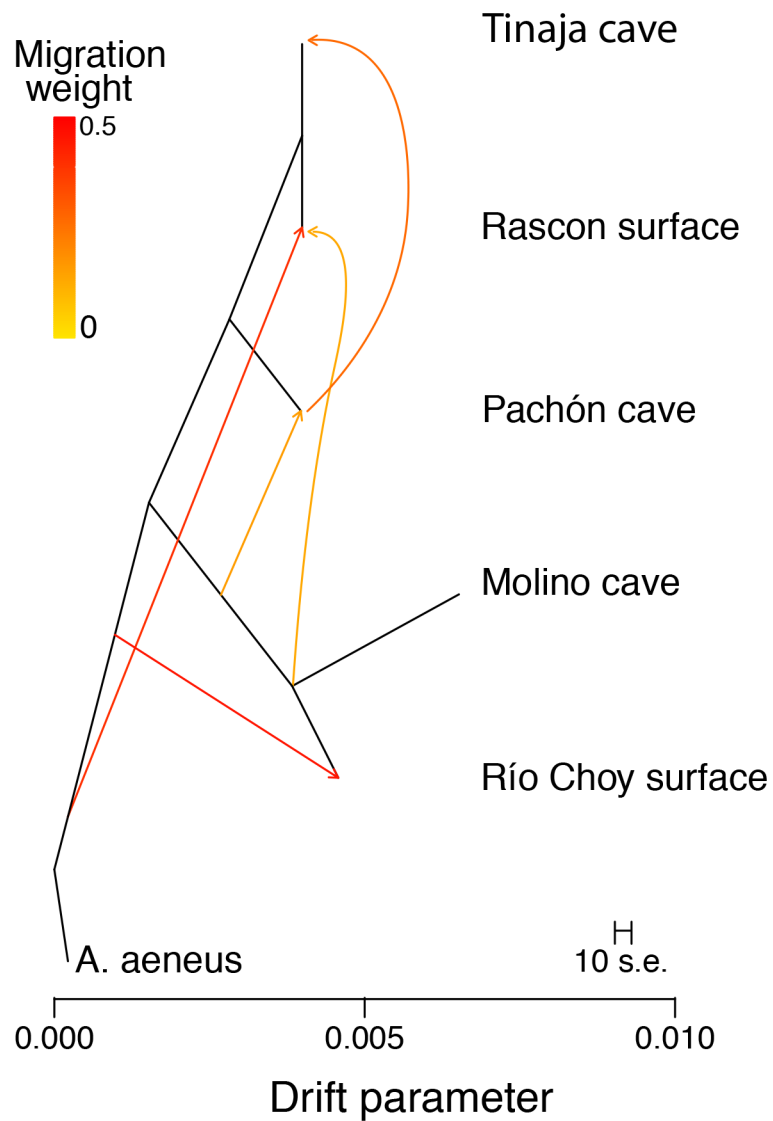


Figure3:

TreeMix population graph with five migration events. We see here patterns evident throughout our study, namely, admixture between a lineage related to *A. aeneus* and Río Choy and Rascón, as well as exchange from the ancestor of Río Choy and Molino into Pachón and Rascón. Admixture from Pachón into Tinaja is also apparent. Analyses were conducted on the Biallelic SNP VCF file thinned to account for linkage between SNPs. This analysis excluded the four recently admixed individuals.

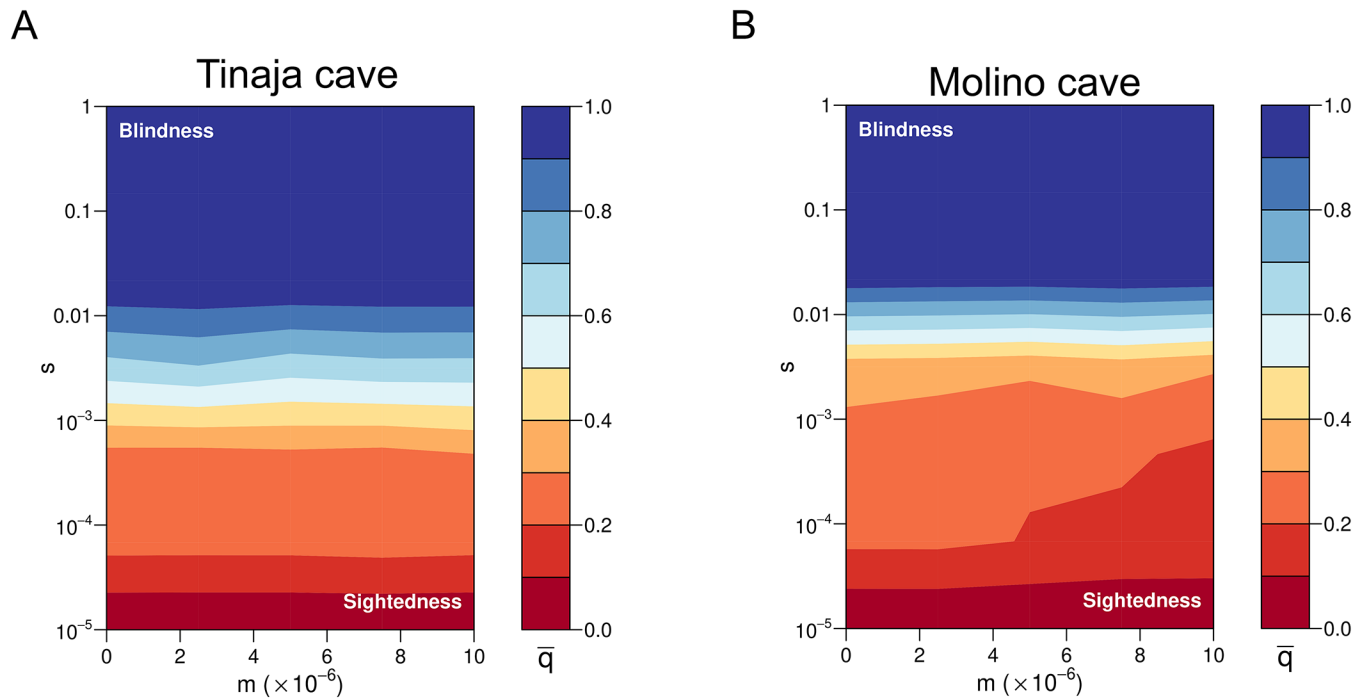


Figure4: Selection coefficients required for cave alleles to reach high frequency (darker blue) in a 12-locus additive model. (a) Tinaja. (b) Molino. Shown is the final iteration of a model that takes into account isolation between cave and surface populations followed by secondary contact in line with demographic models presented in the paper. m = migration rate, s = selection Coefficient.

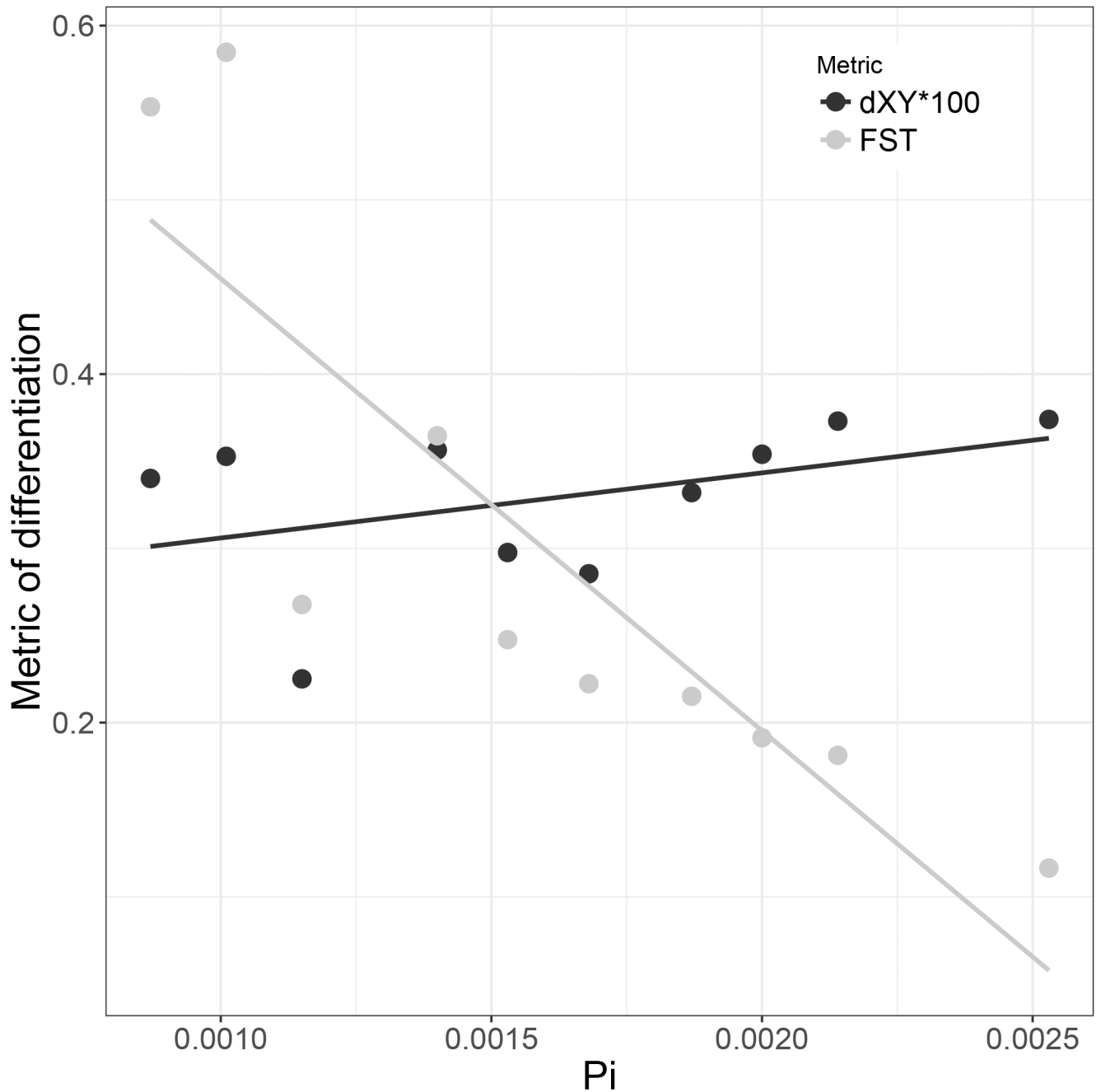


Figure5: Pairwise population comparisons using F_{ST} and average π pop1-pop2 at fourfold degenerate sites (filled circles) or d_{XY} (open circles) averaged across the genome using non-admixed individuals. There is no correlation between F_{ST} and d_{XY} , but a strong correlation between F_{ST} and average π pop1-pop2. Thus, the heterogeneity in π is driving F_{ST} , not absolute diverg

Table 1.

Basic statistics for population level resequencing. Coverage statistics are for reads cleaned of adapters, filtered for quality, and aligned to the *Astyanax mexicanus* reference genome v1.0.2. Two individuals of *Astyanax aeneus*, one Texas surface *Astyanax mexicanus*, and white long-finned skirt tetra (*Gymnocorymbus ternetzi*) were also sequenced.

Population	N	aligned coverage mean (range)
Pachón - cave	9 + reference	9.94 (7.65, 17.74)
Tinaja - cave	10	10.05 (7.27, 12.35)
Rascón - surface	6	10.90 (8.63, 13.15)
Molino - cave	9	9.39 (7.47, 12.32)
Río Choy-surface	9	9.27 (8.38, 10.26)

Table 2.

Inter- and intra- population average pairwise nucleotide diversity for across the genome (d_{XY} and π , respectively). Values in italics on the diagonal are the estimates of mean π for that population, values below the diagonal are d_{XY} for the population pair. Values above the diagonal are estimates, in generations, of the population split times (see Methods). In this table, four recent hybrids were excluded (e.g., Rascón 6, Tinaja 6, Choy 14, Tinaja E). Resulting in the sample sizes: *A. aeneus*: N = 2; Río Choy: N = 8; Molino: N = 9; Rascón: N = 5; Pachón: N = 9; Tinaja: N = 8 in the final calculations. N/A means the divergence time was negative. Divergence time does not take into account gene flow, therefore, is likely underestimated.

	<i>A. aeneus</i>	Río Choy	Molino	Pachón	Rascón	Tinaja
<i>A. aeneus</i>	<i>0.0035</i>	398,239	372,641	276,735	281,219	264,154
Río Choy	0.00637	<i>0.00387</i>	113,913	96,569	156,597	118,333
Molino	0.00619	0.00438	<i>0.00033</i>	50,338	101,781	67,029
Pachón	0.00552	0.00426	0.00393	<i>0.00080</i>	139,541	N/A
Rascón	0.00555	0.00468	0.00429	0.00335	<i>0.00237</i>	113,321
Tinaja	0.00543	0.00441	0.00405	0.00218	0.00316	<i>0.0092</i>

Table 3.

F_3 statistics for significant configurations out of all possible three population configurations (X;A,B) where X is the population tested for admixture. A significantly negative F_3 statistic indicates admixture from populations related to A and B. Notably, we conducted the F_3 statistics without individuals showing recent evidence of admixture. Sample sizes were as follows: *A. aeneus*: N = 2; Río Choy: N = 8; Molino N = 9; Rascón N = 5; Pachón N = 9; Tinaja N = 8. Any z-score below -1.645 passes the critical value for significance at $\alpha = 0.05$. Tests are ordered most-least extreme z-scores. All other confirmations were not significant for introgression.

(X; A, B)	F_3 -statistic	standard error	z-score
Rascón; <i>A. aeneus</i> ,Tinaja	-9.25e-04	5.63e-05	-16.42
Rascón;Río Choy,Tinaja	-7.34e-04	4.97e-05	-14.78
Rascón;Molino,Tinaja	-7.21e-04	5.17e-05	-13.94
Rascón; <i>A. aeneus</i> ,Pachón	-5.52e-04	6.05e-05	-9.13
Rascón; <i>A. aeneus</i> ,Molino	-3.73e-04	6.53e-05	-5.71
Rascón;Río Choy,Pachón	-2.04e-04	6.03e-05	-3.38
Rascón;Molino,Pachón	-1.46e-04	6.18e-05	-2.36
Río Choy; <i>A. aeneus</i> ,Molino	-1.02e-04	5.51e-05	-1.84

a demographic modeling of divergence times between pairwise populations for 50 replicates per model. For population pairs that favored the IM2M model (e.g., isolation with migration and heterogeneity of migration across the genome), we also report results of SC2M (e.g., a period of isolation followed by secondary contact and heterogeneity of migration across the genome) which was the favored model for most pairwise population comparisons. Ts is the number of generations from population split to the start of secondary contact. Tsc is the number of generations from the start of secondary contact to the present. Ts+Tsc is the total divergence time in generations. Generation interval is assumed to be one year.

Table 4.

Pop1	Pop2	Model	MedianTs	MinTs	MaxTs	MedianTsc	MinTsc	MaxTsc	MedianTs+Tsc
Choy	Molino	SC2M	91,270	0	1,031,510	71,268	0	2,061,383	162,537
Choy	Pachón	SC2M	174,483	0	5,894,387	6,690	0	1,944,141	181,173
Choy	Rascón	SC2M	241,747	7,018	263,584	14,928	0	274,878	256,675
Choy	Tinaja	SC2M	182,107	0	497,367	24,859	0	519,170	206,966
Molino	Pachón	SC2M	195,724	60	641,127	30,431	0	603,939	226,155
Molino	Rascón	IM2M	1,242,575	228,667	1,799,441	NA	NA	NA	NA
Molino	Rascón	SC2M	210,396	0	1,593,512	27,023	0	1,044,418	237,418
Molino	Tinaja	SC2M	119,177	0	563,918	34,819	0	290,502	153,996
Pachón	Rascón	IM2M	1,239,971	140,387	11,358,780	NA	NA	NA	NA
Pachón	Rascón	SC2M	148,702	27,575	655,675	12,560	0	644,435	161,262
Pachón	Tinaja	SC2M	102,245	0	261,637	13,277	4,358	137,507	115,522
Rascón	Tinaja	SC2M	170,279	0	405,939	20,370	0	399,350	190,650