

SCIENTIFIC REPORTS



OPEN

Author Correction: Network of proteins, enzymes and genes linked to biomass degradation shared by *Trichoderma* species

Maria Augusta Crivelente Horta¹, Jaire Alves Ferreira Filho¹, Natália Faraj Murad¹, Eidy de Oliveira Santos², Clelton Aparecido dos Santos¹, Juliano Sales Mendes¹, Marcelo Mendes Brandão¹, Sindelia Freitas Azzoni³ & Anete Pereira de Souza^{1,4}

Correction to: *Scientific Reports* <https://doi.org/10.1038/s41598-018-19671-w>, published online 22 January 2018

This Article contains an error in Figure 3b where the blue bars for ‘Th’ are incorrectly marked as ‘Tr’. The correct Figure 3 appears below as Figure 1.

¹Center for Molecular Biology and Genetic Engineering (CBMEG), University of Campinas (UNICAMP), Campinas, SP, Brazil. ²University Unit of Biology, West Zone State University (UEZO), Rio de Janeiro, RJ, Brazil. ³Bioethanol Science and Technology Laboratory (CTBE), Brazilian Center of Research in Energy and Materials (CNPEM), Campinas, SP, Brazil. ⁴Department of Plant Biology, Biology Institute, University of Campinas (UNICAMP), Campinas, SP, Brazil. Correspondence and requests for materials should be addressed to A.P.d.S. (email: anete@unicamp.br)

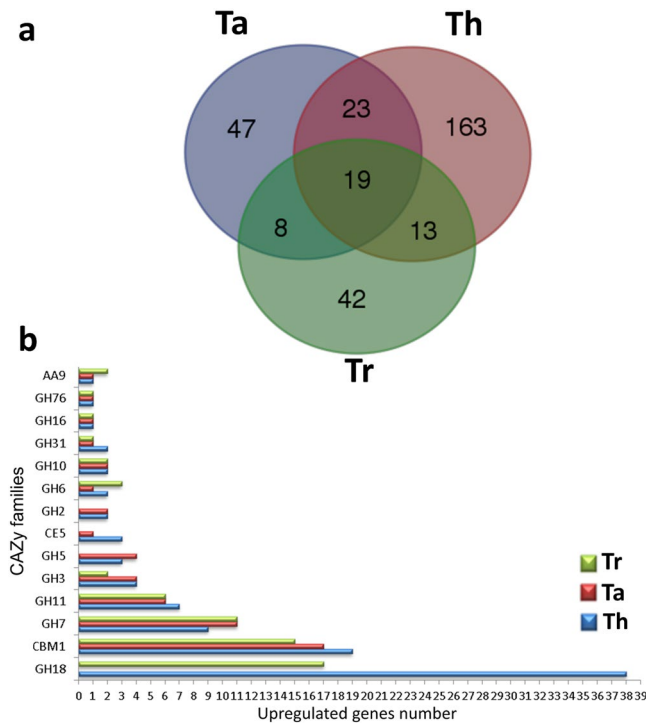


Figure 1. Protein classification by exoproteome analysis. **(a)** Venn diagram comparing proteins detected in the cultures of *Trichoderma* species. **(b)** Distribution of CAZymes among the secreted proteins of Tr, Ta, and Th under both fermentative conditions.



Open Access This article is licensed under a Creative Commons Attribution 4.0 International License, which permits use, sharing, adaptation, distribution and reproduction in any medium or format, as long as you give appropriate credit to the original author(s) and the source, provide a link to the Creative Commons license, and indicate if changes were made. The images or other third party material in this article are included in the article's Creative Commons license, unless indicated otherwise in a credit line to the material. If material is not included in the article's Creative Commons license and your intended use is not permitted by statutory regulation or exceeds the permitted use, you will need to obtain permission directly from the copyright holder. To view a copy of this license, visit <http://creativecommons.org/licenses/by/4.0/>.

© The Author(s) 2018