



Contribution of the Twin-Arginine Translocation System to the Intracellular Survival of *Salmonella* Typhimurium in *Dictyostelium discoideum*

Ítalo M. Urrutia, Andrea Sabag, Camila Valenzuela, Bayron Labra, Sergio A. Álvarez and Carlos A. Santiviago*

Laboratorio de Microbiología, Departamento de Bioquímica y Biología Molecular, Facultad de Ciencias Químicas y Farmacéuticas, Universidad de Chile, Santiago, Chile

OPEN ACCESS

Edited by:

George Grant,
University of Aberdeen,
United Kingdom

Reviewed by:

Salvatore Bozzaro,
Università degli Studi di Torino, Italy
Francisco Ramos-Morales,
Universidad de Sevilla, Spain
Richard Ducatelle,
Ghent University, Belgium

*Correspondence:

Carlos A. Santiviago
csantiviago@ciq.uchile.cl

Specialty section:

This article was submitted to
Infectious Diseases,
a section of the journal
Frontiers in Microbiology

Received: 04 August 2018

Accepted: 20 November 2018

Published: 06 December 2018

Citation:

Urrutia ÍM, Sabag A,
Valenzuela C, Labra B, Álvarez SA
and Santiviago CA (2018)
Contribution of the Twin-Arginine
Translocation System to the
Intracellular Survival of *Salmonella*
Typhimurium in *Dictyostelium*
discoideum. *Front. Microbiol.* 9:3001.
doi: 10.3389/fmicb.2018.03001

The twin-arginine translocation (Tat) system is a specialized secretion pathway required for bacteria to export fully folded proteins through the cytoplasmic membrane. This system is crucial during *Salmonella* infection of animal hosts. In this study, we show that *Salmonella enterica* serovar Typhimurium (*S. Typhimurium*) requires the Tat system to survive and proliferate intracellularly in the social amoeba *Dictyostelium discoideum*. To achieve this, we developed a new infection assay to assess intracellular bacterial loads in amoeba by direct enumeration of colony forming units (CFU) at different times of infection. Using this assay we observed that a $\Delta tatABC$ mutant was internalized in higher numbers than the wild type, and was defective for intracellular survival in the amoeba at all times post infection evaluated. In addition, we assessed the effect of the $\Delta tatABC$ mutant in the social development of *D. discoideum*. In contrast to the wild-type strain, we observed that the mutant was unable to delay the social development of the amoeba at 2 days of co-incubation. This phenotype correlated with defects in intracellular proliferation presented by the $\Delta tatABC$ mutant in *D. discoideum* after 24 h of infection. All phenotypes described for the mutant were reverted by the presence of a plasmid carrying *tatABC* genes, indicating that abrogation of Tat system attenuates *S. Typhimurium* in this model organism. Overall, our results indicate that the Tat system is crucial for *S. Typhimurium* to survive and proliferate intracellularly in *D. discoideum* and for virulence in this host. To the best of our knowledge, this is the first report on the relevance of the Tat system in the interaction of any bacterial pathogen with the social amoeba *D. discoideum*.

Keywords: *Salmonella*, *Dictyostelium*, Tat system, infection, intracellular survival, social development, virulence

INTRODUCTION

The genus *Salmonella* includes species *S. enterica* and *S. bongori*, which can be differentiated into more than 2,500 serovars according to variations of surface antigens. Some serovars within *S. enterica*, such as *Salmonella enterica* serovar Typhimurium (*S. Typhimurium*), are named generalist as they can infect a wide range of hosts, causing illnesses ranging from gastroenteritis to

severe systemic disease (Tsolis et al., 1999; Zhang et al., 2003). These pathogens are highly versatile and can adapt to a variety of conditions both in the natural environment and within a host.

Internalization and intracellular survival in host cells are essential processes for *Salmonella* virulence that depend on the translocation of bacterial effector proteins to eukaryotic cells through the type 3 secretion systems (T3SS) encoded in SPI-1 and SPI-2 (T3SS_{SPI-1} and T3SS_{SPI-2}, respectively) (Haraga et al., 2008). In addition, it has been reported that other secretion systems, such as the twin-arginine translocation (Tat) system, are required for *Salmonella* infection (Mickael et al., 2010; Reynolds et al., 2011; Craig et al., 2013).

The Tat system is found in most bacteria and has the unusual property of transporting fully folded proteins from the cytoplasm to the periplasmic space (Palmer and Berks, 2012). In *Escherichia coli* and *Salmonella*, the main components of this system are proteins TatA, TatB, and TatC. TatB and TatC form an integral membrane complex that recognizes substrates containing an amino-terminal signal peptide that includes the twin-arginine consensus motif S/T-R-R-x-F-L-K. Once the substrate has been recognized, the TatBC complex induces the polymerization of TatA to form the pore that allows the passage of the fully folded protein through the cytoplasmic membrane (Palmer and Berks, 2012).

It has been described that inactivation of genes encoding Tat components in several bacteria including *E. coli*, *Legionella pneumophila*, *Yersinia pseudotuberculosis*, *Mycobacterium smegmatis*, *Vibrio cholerae*, *Pseudomonas aeruginosa* and *S. Typhimurium* results in defects in several bacterial properties and processes, including cell morphology, growth and biofilm formation, cell wall integrity, transport of virulence factors, cell division, motility and chemotaxis (Bogsch et al., 1998; Santini et al., 1998; Voulhoux et al., 2001; Ochsner et al., 2002; Ding and Christie, 2003; Pradel et al., 2003; Harrison et al., 2005; McDonough et al., 2005; Rossier and Cianciotto, 2005; Lavander et al., 2006; Posey et al., 2006; Zhang et al., 2009; Reynolds et al., 2011). Regarding the role of the Tat system in *Salmonella* virulence, it has been reported that a Δ tatC mutant of *S. Typhimurium* presents colonization defects in mice (Santiviago et al., 2009; Reynolds et al., 2011; Craig et al., 2013) and reduced intracellular replication in J774-A1 murine macrophages (Reynolds et al., 2011). In addition, inactivation of genes *tatB* and *tatC* in *Salmonella* Enteritidis results in impaired Caco-2 cell invasion and reduced colonization in mice and chickens (Mickael et al., 2010; Silva et al., 2012).

During its life cycle outside animal hosts, *Salmonella* interacts with a wide variety of predatory eukaryotic organisms in the environment, including amoeba. Amoeba are organisms that feed on fungi and bacteria by phagocytosis (Salah et al., 2009; Denoncourt et al., 2014; Hoffmann et al., 2014). Several bacterial pathogens have been described to survive predation by these organisms, including *L. pneumophila*, *Mycobacterium marinum*, *Bordetella bronchiseptica*, *P. aeruginosa* and *V. cholerae*, among others (Abd et al., 2005, 2007; Cardenal-Muñoz et al., 2017; Strassmann and Shu, 2017; Taylor-Mulneix et al., 2017; Swart et al., 2018). Recently, we and other researchers have reported that *S. Typhimurium* can survive within the social amoeba

Dictyostelium discoideum (Sillo et al., 2011; Riquelme et al., 2016; Varas et al., 2018) and requires T3SS_{SPI-1} and T3SS_{SPI-2} for this process, among other virulence factors (Riquelme et al., 2016).

In this work, we assessed the contribution of the Tat system to the interaction of *S. Typhimurium* with *D. discoideum*. To this end, we developed a CFU-based infection assay using axenic *D. discoideum* to evaluate the intracellular survival of wild-type and Δ tatABC strains in the amoeba. Our results showed that the Δ tatABC mutant presents intracellular survival and proliferation defects during infection in this host. In addition, we observed that the Δ tatABC mutant was unable to delay the social development of the amoeba caused by the wild-type strain. Altogether, our results indicate that the Tat system plays a major role during the interaction of *S. Typhimurium* with *D. discoideum*.

MATERIALS AND METHODS

Bacterial Strains, Media and Culture Conditions

Bacterial strains used in this study are described in **Table 1**. All *S. Typhimurium* strains are derivatives of the wild-type, virulent strain 14028s (Fields et al., 1986; Jarvik et al., 2010). Bacteria were routinely grown statically in Luria-Bertani (LB) medium (10 g/L tryptone, 5 g/L NaCl and 5 g/L yeast extract) at 37°C. When required, the medium was supplemented with ampicillin (100 mg/L), chloramphenicol (20 mg/L) or kanamycin (75 mg/L). Media were solidified by the addition of agar (15 g/L). All procedures involving the use of pathogenic organisms were conducted following the guidelines in the Biosafety Manual (2018 version) of the National Commission of Scientific and Technological Research (CONICYT, Chile), and were approved by the Biosafety Committee of Universidad de Chile, Campus Norte.

Dictyostelium Strains, Media and Culture Conditions

D. discoideum strain AX4 (DBS0302402) (**Table 1**) was obtained from Dicty Stock Center (Basu et al., 2013; Fey et al., 2013), and cultured according to standard protocols (Fey et al., 2007). Briefly, amoeba were maintained at 22°C in SM agar (10 g/L glucose, 10 g/L peptone, 1 g/L yeast extract, 1 g/L MgSO₄ × 7H₂O, 1.9 g/L KH₂PO₄, 0.6 g/L K₂HPO₄, 20 g/L agar), growing on a confluent lawn of *Klebsiella aerogenes* (DBS0305928). For infection assays, amoeba were grown axenically at 22°C in HL5 medium (14 g/L tryptone, 7 g/L yeast extract, 0.35 g/L Na₂HPO₄, 1.2 g/L KH₂PO₄, 14 g/L glucose, pH 6.3) with agitation at 180 rpm. When required, HL5 medium was supplemented with a mix of streptomycin (300 mg/L) and ampicillin (100 mg/L). Prior to infection, amoeba were harvested at the early exponential phase (1–2 × 10⁶ cells/mL) and centrifuged at 300 × g for 5 min at 4°C. The supernatant was discarded and the pellet was washed three times using Soerensen buffer (2 g/L KH₂PO₄, 0.36 g/L Na₂HPO₄ × 2H₂O, pH 6.0). Trypan blue exclusion and counting in a Neubauer chamber was used to determine the population of viable cells.

TABLE 1 | Bacteria and *Dictyostelium* strains used in this study.

Strain	Characteristic or genotype	Source or reference
<i>Salmonella</i> Typhimurium		
WT	Wild-type, virulent strain 14028s	Laboratory collection (Fields et al., 1986; Jarvik et al., 2010)
Δ tatABC	Δ tatABC::Kan	This study
Δ tatABC/pTAT	Δ tatABC::Kan transformed with plasmid pBAD-TOPO::tatABC	This study
Δ tatABC/pBAD	Δ tatABC::Kan transformed with plasmid pBAD-TOPO	This study
Δ aroA	Δ aroA::Kan	Laboratory collection (Varas et al., 2017)
Δ phoN	Δ phoN::Cam	Laboratory collection (Riquelme et al., 2016)
<i>Escherichia coli</i>		
B/r (DBS0348878)	Wild-type strain	Dicty Stock Center (dictyBase)
<i>Klebsiella aerogenes</i>		
DBS0305928	Wild-type strain	Dicty Stock Center (dictyBase)
<i>Dictyostelium discoideum</i>		
AX4 (DBS0302402)	axeA1 axeB1 axeC1	Dicty Stock Center (dictyBase)

TABLE 2 | Primers used in this study.

Primer name	Sequence
tatABC_(H1+P1)	AGGAACATGTATGGGTGGTATCAGTATTTGGCAGTTGTTGGTGCAGGCTGGAGCTGCTTC
tatABC_(H2+P2)	GCGGTTGTGTTAGTCTTCAGTGTGCTCGGCCTTTTCGGTCATATGAATATCCTCCTTAG
tatABC_Out5	GAGCGGGTCATTCTTACTCG
tatABC_Out3	TTCGTTCCGGTCAGTAGCAT
pBAD_Forward	ATGCCATAGCATTTCATCC
pBAD_Reverse	GATTTAATCTGTATCAGG

Underlined sequences anneal to the 5' or 3' end of the antibiotic-resistance cassette in template vector pCLF4 (Kan^R, GenBank accession number EU629214).

Construction of Mutant Strains

A *S. Typhimurium* Δ tatABC mutant strain was constructed using the Lambda Red recombination method (Datsenko and Wanner, 2000) with modifications (Santiviago et al., 2009), using primers tatABC_(H1+P1) and tatABC_(H2+P2), and plasmid pCLF4 (Kan^R, GenBank accession number EU629214) as template for PCR amplification. The correct allelic replacement in this mutant was confirmed by PCR amplification using primers tatABC_Out5 and tatABC_Out3, flanking the substitution site. All primers for PCR amplifications are listed in **Table 2**.

Construction of Complementing Plasmid pTAT

A DNA fragment containing genes *tatABC* (including the promoter region) was amplified from the genome of *S. Typhimurium* strain 14028s using *Taq* DNA polymerase (Invitrogen) and primers tatABC_Out5 and tatABC_Out3 (**Table 2**). The PCR product was purified from 1% agarose gels using the "QIAquick Gel Extraction Kit" (QIAGEN) and cloned into pBAD-TOPO using the "pBAD-TOPO TA Expression Kit" (Invitrogen). The presence and orientation of the insert in the recombinant plasmid generated (pTAT) was confirmed by PCR amplification using combinations of primers tatABC_Out5, tatABC_Out3, pBAD_Forward and pBAD_Reverse (**Table 2**). The *S. Typhimurium* Δ tatABC mutant was transformed by electroporation with plasmids pTAT or pBAD-TOPO for complementation assays.

Individual Infection Assay

An infection assay was developed (**Supplementary Figure S1**) based on a method previously described by our group (Riquelme et al., 2016). Each bacterial strain to be evaluated was grown overnight, suspended in LB medium adjusting the OD_{600nm} to 0.2, harvested and washed two times with Soerensen buffer. Next, 150 μ L of each bacterial suspension was further diluted by adding 850 μ L of Soerensen buffer. In parallel, *D. discoideum* AX4 cells from axenic cultures grown to exponential phase were washed two times with Soerensen buffer, and titrated by Trypan blue exclusion and counting on a Neubauer chamber. Next, a suspension containing $\sim 1 \times 10^6$ amoeba/mL was prepared using Soerensen buffer. Aliquots of 100 μ L from bacteria and amoeba suspensions were mixed in an Eppendorf tube in order to obtain a multiplicity of infection (MOI) of ~ 100 bacteria/amoeba. The mixture was centrifuged at $9,200 \times g$ for 20 s (to promote the interaction of bacteria with amoeba), and incubated at 22°C for 1 h. After the incubation, all mixes were centrifuged at $300 \times g$ for 5 min, washed once with Soerensen buffer supplemented with gentamicin (10 mg/L) to kill extracellular bacteria, then centrifuged and washed twice with Soerensen buffer to remove the antibiotic, and finally centrifuged and suspended in Soerensen buffer (final volume: 100 μ L). The content of two tubes carrying a suspension of infected amoeba after 0, 1, 3, 5, 10 or 24 h post infection was analyzed in parallel to determine viable amoeba and intracellular bacteria. Viable amoeba in the first tube were determined at each time point by Trypan blue exclusion and counting on a Neubauer chamber. In addition, infected

amoeba recovered from the second tube were washed once with Soerensen buffer and finally lysed with 0.2% Triton X-100. Titters of intracellular bacteria were determined by serial dilutions and plating on LB agar.

Bacterial Adherence Assay

A procedure similar to our infection assay was implemented to evaluate adherence of different bacterial strains to *D. discoideum* AX4 cells. Briefly, suspensions of bacteria and amoeba were prepared as indicated above and mixed at a MOI of ~ 100 bacteria/amoeba in an Eppendorf tube. Next, each mixture was centrifuged ($9,200 \times g$ for 20 s) to promote the interaction of bacteria with amoeba, and further incubated at 4°C for 30 min. After the incubation, all mixtures were centrifuged ($300 \times g$ for 5 min) at 4°C and the infected amoeba were washed 3 sequential times with Soerensen buffer at 4°C to remove non-adhered bacteria. Finally, amoeba were lysed with 0.2% Triton X-100 and titters of adhered bacteria were determined by serial dilutions and plating on LB agar.

Bacterial Toxicity Assay

A modified version of the virulence assay reported by Champion and colleagues (Champion et al., 2016) was implemented to indirectly evaluate bacterial cytotoxicity toward *D. discoideum* evidenced by changes in cell morphology of amoeba co-incubated with different *S. Typhimurium* strains and *E. coli* B/r. Briefly, bacteria and amoeba were cultured as indicated in the infection assay procedure. Aliquots (100 μ L) of a suspension containing $\sim 1 \times 10^6$ amoeba/mL prepared in HL5 medium were added to the wells of a 96-well plate and incubated overnight at 22°C to allow adhesion of amoeba to the bottom of the wells. The next day, the HL5 medium in wells containing adhered amoeba was replaced with aliquots (100 μ L) of bacterial suspensions prepared in Soerensen buffer in order to obtain MOIs of 100 or 1,000 bacteria/cell. The plates were incubated at 22°C and the cell shape of infected amoeba in each well was monitored at different co-incubation times (0, 30, 60, 90, 120, 150, and 180 min) using a Motic AE 2000 inverted microscope equipped with a Plan Achromatic Phase LWD PL Ph2 40 \times objective. Representative images were acquired using a Moticam 580 (5.0 MP) digital camera attached to the trinocular port of the microscope using a C-mount adapter (0.5 \times).

Social Development Assay

Individual wells of a 24-well plate containing N agar (Soerensen buffer supplemented with 1 g/L peptone, 1 g/L glucose and 20 g/L agar) were inoculated with 30 μ L of an overnight culture from each bacterial strain to be evaluated. The plate was incubated overnight at 22°C to obtain bacterial lawns. The next day, 10 μ L of a suspension containing $\sim 1 \times 10^4$ axenic *D. discoideum* AX4 cells in HL5 was spotted in the center of each well on top of the corresponding bacterial lawn and the plate was further incubated at 22°C for 2 days. Representative images of *D. discoideum* development were obtained at days 1 and 2 using a Motic SMZ-171 stereomicroscope equipped with a Moticam 580 (5.0 MP) digital camera attached to the trinocular port of the stereomicroscope using a C-mount adapter (0.5 \times).

RESULTS AND DISCUSSION

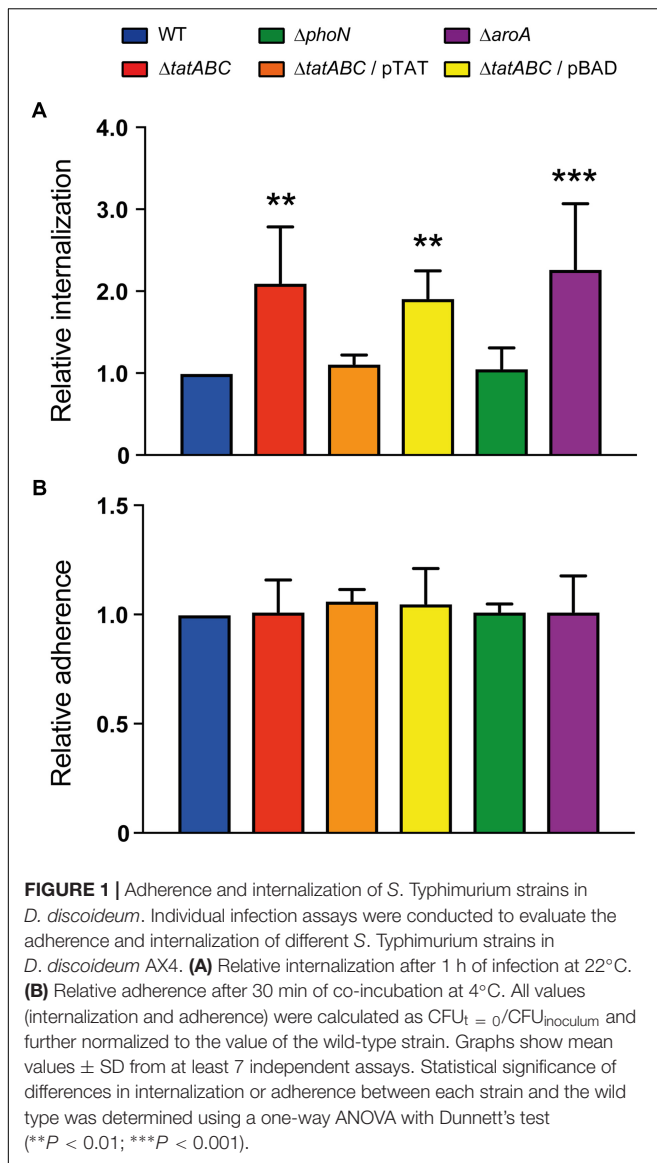
New Infection Assay to Evaluate Internalization and Intracellular Survival in *D. discoideum*

To evaluate the role played by the Tat system in the survival of *S. Typhimurium* in *D. discoideum*, we developed a new CFU-based infection assay where amoeba were infected with the wild type and mutant strains, and intracellular bacteria were recovered from infected amoeba and titrated at different times post infection to evaluate internalization and intracellular survival (**Supplementary Figure S1**). The main advantage of this method is that it uses smaller volumes, and therefore fewer amoeba cells, than assays previously reported by our group (Riquelme et al., 2016; Varas et al., 2018). This simplifies the handling of samples, allowing the analysis of more strains per experiment than assays requiring larger volumes. Although this method is based on a described assay (Riquelme et al., 2016), we used our new infection assay to analyze the wild-type strain and included $\Delta aroA$ and $\Delta phoN$ mutants as controls in order to validate our observations. The internalization of each strain was evaluated after 1 h of infection. We observed that the $\Delta aroA$ mutant was internalized in higher numbers than the wild type, and the $\Delta phoN$ mutant was internalized at wild-type levels (**Figure 1A**). In addition, the $\Delta aroA$ mutant presented defects in intracellular survival in the amoeba while the $\Delta phoN$ mutant presented wild-type levels of intracellular survival (**Figure 3A**). These observations are consistent with results from different infection assays showing that $\Delta aroA$ and $\Delta phoN$ mutants are attenuated and not attenuated in this model organism, respectively (Riquelme et al., 2016; Varas et al., 2018).

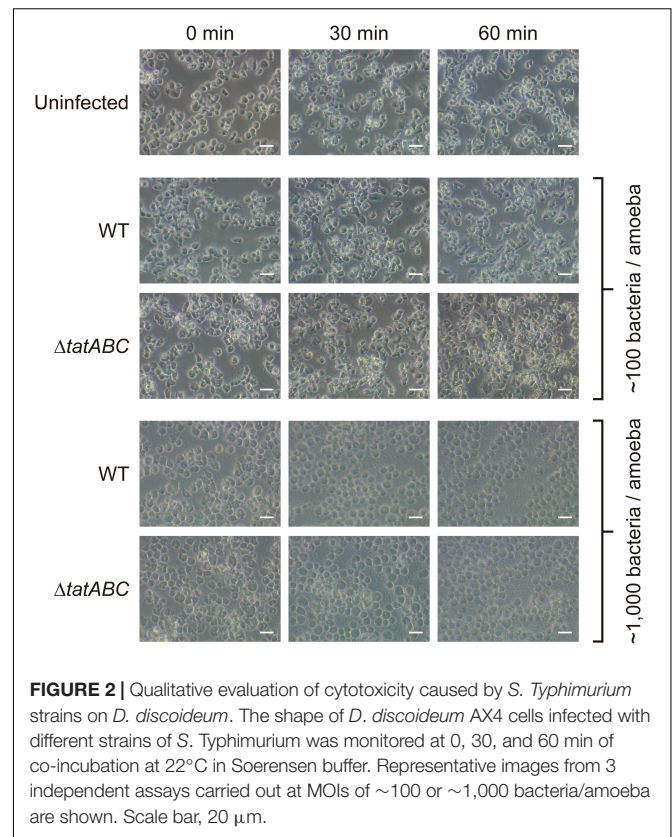
A *S. Typhimurium* $\Delta tatABC$ Mutant Is Defective for Intracellular Survival in *D. discoideum*

Once validated, we used our infection assay to evaluate the internalization and intracellular survival of a $\Delta tatABC$ mutant in *D. discoideum*. We observed that this mutant was internalized at higher levels than the wild-type strain, as in the case of the $\Delta aroA$ mutant (**Figure 1A**). To gain further insight into the causes of the observed phenotype, we conducted an assay to evaluate the adherence of our strains to *D. discoideum* cells. We observed that all strains presented identical adherence levels (**Figure 1B**), indicating that the elevated internalization levels presented by $\Delta tatABC$ (and other mutants under study) are not attributable to increased adherence to amoeba cells resulting in higher uptake.

Furthermore, we conducted a modified version of an assay originally developed to evaluate virulence of *Pseudomonas aeruginosa* strains during co-incubation with *D. discoideum* in buffer (Champion et al., 2016). The authors of the method reported that virulent strains of *P. aeruginosa* caused cell rounding and cytoplasmic shrinkage of amoeba, that were interpreted as a cytotoxic effect exerted by these strains (Champion et al., 2016). In our case, co-incubations of amoeba



with each bacterial strain at a MOI of ~ 100 bacteria/amoeba for up to 180 min produced no changes in *D. discoideum* cell shape (**Supplementary Figure S2**). **Figure 2** shows representative results of amoeba co-incubated for up to 60 min with the wild-type strain or the $\Delta tatABC$ mutant. These results suggest that all bacterial strains evaluated produced no cytotoxic effects to amoeba cells under the experimental conditions evaluated. In contrast, during co-incubations conducted at a MOI of $\sim 1,000$ bacteria/amoeba all strains caused detachment of amoeba from the wells and a rounded cell morphology at all times evaluated (**Figure 2** and **Supplementary Figure S2**), suggesting the existence of a cytotoxic effect toward *D. discoideum* under these experimental conditions. Therefore, most probably the differences in internalization levels presented by each strain under study are not caused by differential cytotoxic effects exerted by these bacteria on amoeba cells under the conditions routinely used in our infection assay (MOI of ~ 100 bacteria/amoeba).



In addition to the internalization phenotype revealed by our infection assay, we observed that the $\Delta tatABC$ mutant was impaired for intracellular survival in *D. discoideum* at all times evaluated, as in the case of the $\Delta aroA$ mutant (**Figure 3A**). No effect in amoeba viability was observed during the course of the infections (**Figure 3B**), indicating that the phenotypes shown by the different strains are not attributable to changes in the number of viable amoeba all through the assay. Of note, all phenotypes presented by the $\Delta tatABC$ mutant were reverted by the presence of a plasmid carrying genes *tatABC* (pTAT), and the presence of the empty vector (pBAD) did not affect the phenotypes shown by this mutant (**Figures 1, 3**). During the course of the infection assay we noticed that all strains slightly decreased their intracellular titers during the first 5 h post infection. We also observed intracellular proliferation in the case of the wild-type strain at 24 h post infection. The proliferation level shown by the wild-type strain at this time point was comparable to that shown by strains $\Delta phoN$ and $\Delta tatABC$ harboring plasmid pTAT, roughly reaching twice the amount of intracellular bacteria present at 1 h post infection. In contrast, in the case of strains $\Delta tatABC$, $\Delta tatABC$ harboring plasmid pBAD and $\Delta aroA$ the amount of intracellular bacteria at 24 h post infection was comparable to the levels shown by each strain at 1 h post infection (**Figure 3A**).

Taken together, our results indicate that *S. Typhimurium* requires the Tat system to survive and proliferate in *D. discoideum*. This is the first report on the relevance of the Tat system in *Salmonella* survival within this amoeba. These

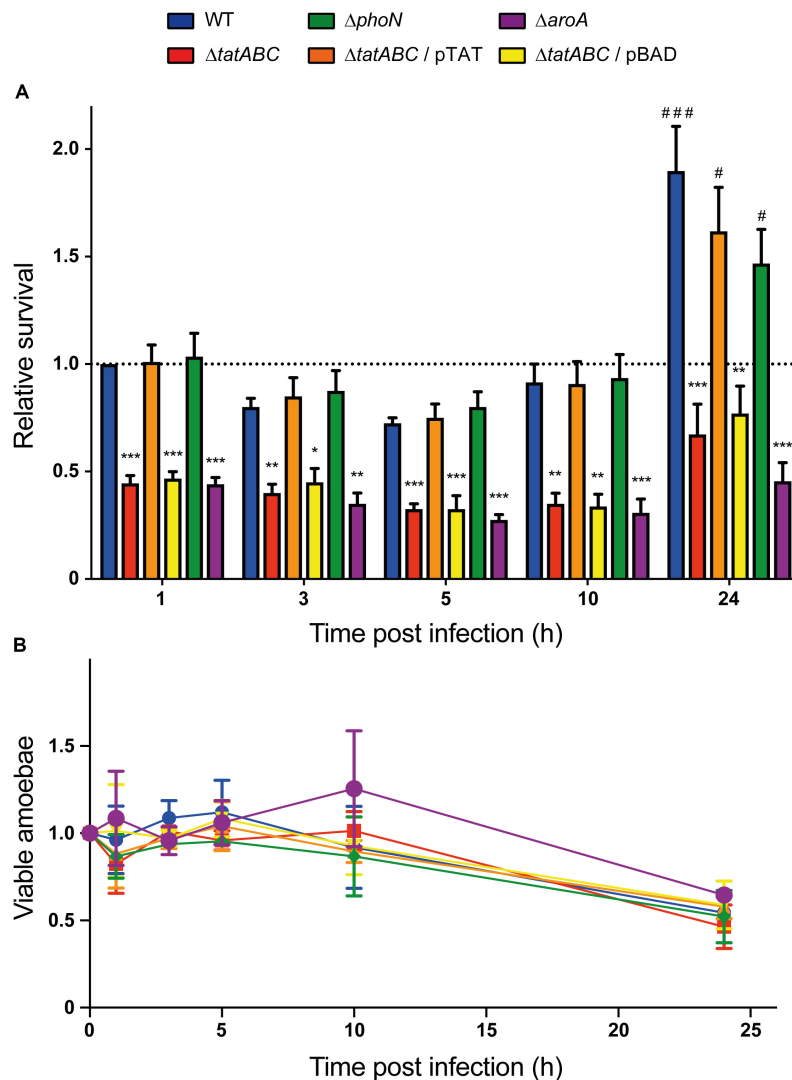
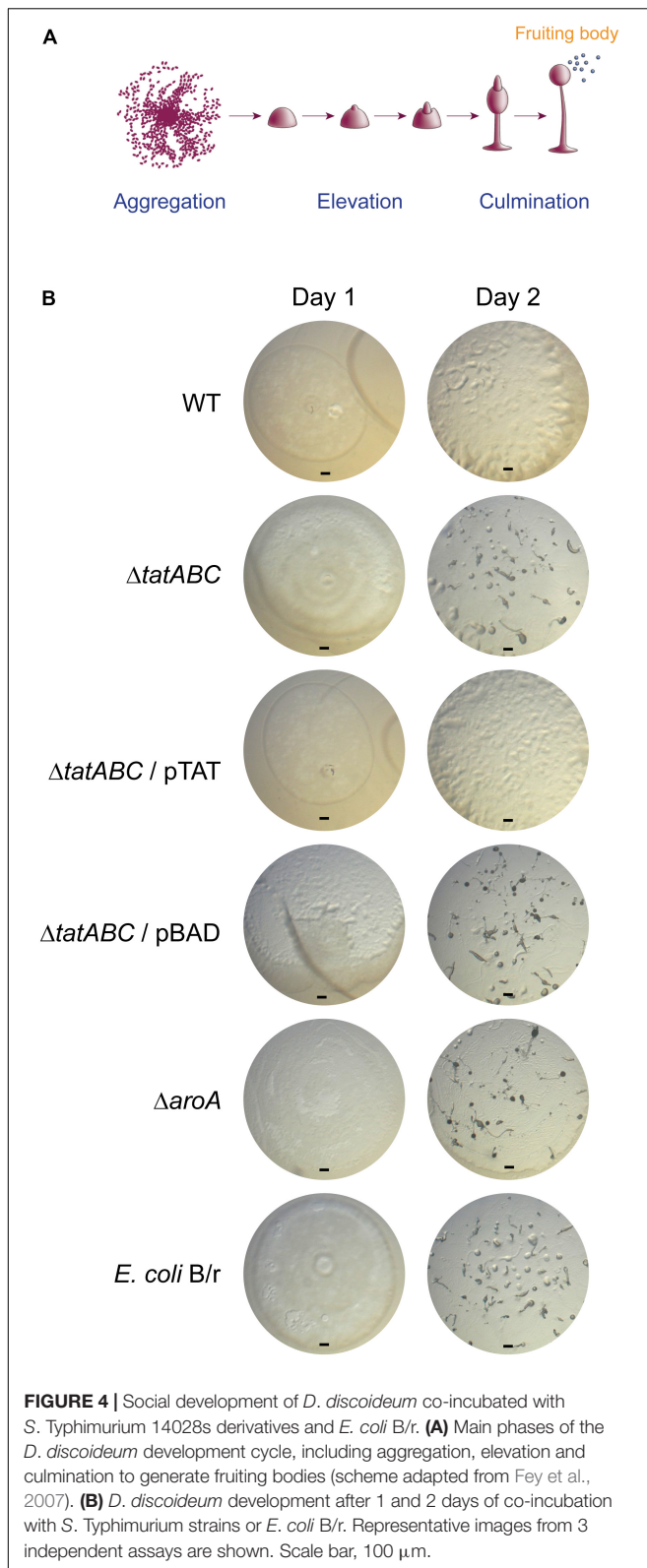


FIGURE 3 | Intracellular survival of *S. Typhimurium* strains in *D. discoideum*. Individual infection assays were conducted to evaluate the intracellular survival of different *S. Typhimurium* strains in *D. discoideum* AX4. **(A)** Relative intracellular survival at different times post infection. All values were calculated as $CFU_t = x/CFU_t = 0$ and further normalized to the value of the wild-type strain at $t = 1$. **(B)** Variation in the population of viable amoeba during the infection assay. All values were calculated as cells/mL and further normalized to the value of amoeba infected with the wild-type strain at $t = 0$. Graphs show mean values \pm SD from at least 7 independent assays. Statistical significance of differences in intracellular survival between each strain and the wild type at a given time was determined using a one-way ANOVA with Dunnett's test (* $P < 0.05$; ** $P < 0.01$; *** $P < 0.001$). Statistical significance of differences in intracellular survival of a given strain at $t = 1$ versus $t = 24$ was determined using a one-way ANOVA with Dunnett's test (# $P < 0.05$; ### $P < 0.001$).

observations are consistent with the role reported for Tat in the intracellular survival of *S. Typhimurium* in J774-A1 murine macrophages (Reynolds et al., 2011). Regarding the role played by Tat in the survival of other bacterial pathogens in protozoa, it has been reported that inactivation of genes encoding components of this system in *L. pneumophila* results in intracellular survival defects in *Acanthamoeba castellanii* and *Hartmannella vermiformis* (De Buck et al., 2005; Rossier and Cianciotto, 2005). These studies also revealed that *L. pneumophila* requires Tat for intracellular survival in U937 human monocytes differentiated into macrophage-like cells (De Buck et al., 2005; Rossier and Cianciotto, 2005).

A *S. Typhimurium* $\Delta tatABC$ Mutant Is Unable to Delay the Social Development of *D. discoideum*

It has been reported that virulent pathogenic bacteria delay the social development of *D. discoideum*, while attenuated or non-pathogenic bacteria allow its rapid progression (Bravo-Toncio et al., 2016; Ouertatani-Sakouhi et al., 2017; Marcoleta et al., 2018). In fact, wild-type *S. Typhimurium* causes a significant delay in the development of this amoeba (Sillo et al., 2011; Varas et al., 2018) and requires a fully functional T3SS_{SP1-2} for this process (Sillo et al., 2011). Thus, to evaluate the role



played by the Tat system in the virulence of *S. Typhimurium* in *D. discoideum*, we compared the effect of feeding the amoeba with the wild-type strain or its $\Delta tatABC$ derivative during the

development cycle, which mainly involves three sequential stages: aggregation, elevation and culmination (Figure 4A). *E. coli* B/r, routinely used to feed the amoeba during growth in the laboratory (Fey et al., 2007), and the attenuated mutant $\Delta aroA$ were included as controls in our assay.

As reported (Varas et al., 2018), the wild-type strain caused a delay in the social development of the amoeba where only the aggregation phase was reached after 2 days of co-incubation (Figure 4B). In contrast, the $\Delta tatABC$ mutant allowed the development of the amoeba until reaching the elevation phase (and in some cases the culmination phase) after 2 days of co-incubation. The same phenotype was observed in the case of the $\Delta aroA$ mutant and *E. coli* B/r. Noteworthy, the $\Delta tatABC$ mutant harboring plasmid pTAT caused a delayed social development of the amoeba similar to that caused by the wild-type strain, and the presence of the empty vector did not affect the phenotype shown by the $\Delta tatABC$ mutant (Figure 4B). It is important to mention that the ability of each bacterial strain to delay the social development of the amoeba correlated with its ability to proliferate intracellularly in this organism after 24 h of infection (compare Figures 3A, 4B).

Given that monitoring the progress of *D. discoideum* social development is used to evaluate the virulence of pathogenic bacteria (Sillo et al., 2011; Bravo-Toncio et al., 2016; Ouertatani-Sakouhi et al., 2017; Marcoleta et al., 2018; Varas et al., 2018), our results indicate that abrogation of Tat system attenuates *S. Typhimurium* in this model organism. Therefore, the Tat system contributes to *S. Typhimurium* virulence in *D. discoideum*. This is consistent with the attenuation showed by a $\Delta tatC$ mutant of *S. Typhimurium* in mice and murine macrophages (Santiviago et al., 2009; Reynolds et al., 2011; Craig et al., 2013), and by *tatB* and *tatC* mutants of *S. Enteritidis* in mice, chickens and Caco-2 epithelial cells (Mickael et al., 2010; Silva et al., 2012).

According to our results, the attenuation showed by the $\Delta tatABC$ mutant in *D. discoideum* (as revealed by its inability to delay the social development of the amoeba) cannot be explained by a diminished toxic effect exerted by this strain (for instance, caused by defective secretion of a particular exotoxin via the Tat system), as no differences in cytotoxicity were detected when *D. discoideum* was co-incubated with the wild-type strain or the $\Delta tatABC$ mutant under the same experimental conditions (MOI and time of infection) (Figure 2 and Supplementary Figure S2). On the other hand, the attenuation phenotype can be explained by the inability of the $\Delta tatABC$ mutant to survive and proliferate intracellularly in this amoeba, as revealed by our infection assay (Figure 3A). In a recent study, the role played by Tat substrates in *S. Typhimurium* virulence was studied (Craig et al., 2013). To this end, the authors inactivated every gene encoding a Tat-exported protein and evaluated the virulence of each mutant strain in a mouse model of infection. Noteworthy, no single Tat-exported substrate accounted for the strong attenuation showed by a Tat-defective mutant ($\Delta tatC$) in this model. However, this attenuation was attributed to failure translocating three Tat substrates: AmiA, AmiC, and SufI. AmiA and AmiC are N-acetylmuramoyl-L-alanine amidases, and SufI (also named FtsP) is involved in bacterial division. Therefore, the attenuation

of a Tat-defective mutant of *S. Typhimurium* in the mouse model of infection was associated with failure to translocate Tat substrates linked to the cell division machinery, resulting in envelope defects (Craig et al., 2013). Most probably, the attenuation and intracellular survival and proliferation defects shown by the Δ *tatABC* mutant in *D. discoideum* can be explained by these envelope defects. Further studies are required to confirm this hypothesis.

CONCLUSION

Overall, our results indicate that the Tat system is essential for *S. Typhimurium* to survive and proliferate intracellularly in *D. discoideum* and for virulence in this host. To the best of our knowledge, this is the first report on the relevance of the Tat system in the interaction of any bacterial pathogen with the social amoeba *D. discoideum*.

AUTHOR CONTRIBUTIONS

ÍU, AS, CV, and CS conceived and designed the experiments, and analyzed the data. ÍU, AS, BL, and CV performed the

experiments. ÍU, CV, SÁ, and CS contributed reagents, materials, and analysis tools, and wrote the paper. All authors read and approved the final manuscript.

FUNDING

This work was supported by FONDECYT grants 1140754, 1171844 (to CS), and 1130225 (to SÁ). ÍU, AS, BL, and CV were supported by CONICYT fellowships 21150005, 22140758, 21180946, and 21140615, respectively.

ACKNOWLEDGMENTS

We thank Macarena Varas for technical guidance during the implementation of the social development assay.

SUPPLEMENTARY MATERIAL

The Supplementary Material for this article can be found online at: <https://www.frontiersin.org/articles/10.3389/fmicb.2018.03001/full#supplementary-material>

REFERENCES

- Abd, H., Saeed, A., Weintraub, A., Nair, G. B., and Sandström, G. (2007). *Vibrio cholerae* O1 strains are facultative intracellular bacteria, able to survive and multiply symbiotically inside the aquatic free-living amoeba *Acanthamoeba castellanii*. *FEMS Microbiol. Ecol.* 60, 33–39. doi: 10.1111/j.1574-6941.2006.00254.x
- Abd, H., Weintraub, A., and Sandström, G. (2005). Intracellular survival and replication of *Vibrio cholerae* O139 in aquatic free-living amoebae. *Environ. Microbiol.* 7, 1003–1008. doi: 10.1111/j.1462-2920.2005.00771.x
- Basu, S., Fey, P., Pandit, Y., Dodson, R., Kibbe, W. A., and Chisholm, R. L. (2013). DictyBase 2013: integrating multiple Dictyostelid species. *Nucleic Acids Res.* 41, D676–D683. doi: 10.1093/nar/gks1064
- Bogsch, E. G., Sargent, F., Stanley, N. R., Berks, B. C., Robinson, C., and Palmer, T. (1998). An essential component of a novel bacterial protein export system with homologues in plastids and mitochondria. *J. Biol. Chem.* 273, 18003–18006. doi: 10.1074/jbc.273.29.18003
- Bravo-Toncio, C., Álvarez, J. A., Campos, F., Ortiz-Severín, J., Varas, M., Cabrera, R., et al. (2016). *Dictyostelium discoideum* as a surrogate host-microbe model for antivirulence screening in *Pseudomonas aeruginosa* PAO1. *Int. J. Antimicrob. Agents* 47, 403–409. doi: 10.1016/j.ijantimicag.2016.02.005
- Cardenal-Muñoz, E., Barisch, C., Lefrançois, L. H., López-Jiménez, A. T., and Soldati, T. (2017). When Dicty met Myco, a (not so) romantic story about one amoeba and its intracellular pathogen. *Front. Cell. Infect. Microbiol.* 7:529. doi: 10.3389/fcimb.2017.00529
- Champion, A. C., Houston, N. K., Bradbury, R. S., and Reid, D. W. (2016). Preliminary feasibility and modelling of a liquid matrix *Dictyostelium discoideum* virulence assay for *Pseudomonas aeruginosa*. *Br. J. Biomed. Sci.* 73, 51–55. doi: 10.1080/09674845.2016.1157249
- Craig, M., Sadik, A. Y., Golubeva, Y. A., Tidhar, A., and Schlauch, J. M. (2013). Twin-arginine translocation system (tat) mutants of *Salmonella* are attenuated due to envelope defects, not respiratory defects. *Mol. Microbiol.* 89, 887–902. doi: 10.1111/mmi.12318
- Datsenko, K. A., and Wanner, B. L. (2000). One-step inactivation of chromosomal genes in *Escherichia coli* K-12 using PCR products. *Proc. Natl. Acad. Sci. U.S.A.* 97, 6640–6645. doi: 10.1073/pnas.120163297
- De Buck, E., Maes, L., Meyen, E., Van Mellaert, L., Geukens, N., Anné, J., et al. (2005). *Legionella pneumophila* Philadelphia-1 *tatB* and *tatC* affect intracellular replication and biofilm formation. *Biochem. Biophys. Res. Commun.* 331, 1413–1420. doi: 10.1016/j.bbrc.2005.04.060
- Denoncourt, A. M., Paquet, V. E., and Charette, S. J. (2014). Potential role of bacteria packaging by protozoa in the persistence and transmission of pathogenic bacteria. *Front. Microbiol.* 5:240. doi: 10.3389/fmicb.2014.00240
- Ding, Z., and Christie, P. J. (2003). *Agrobacterium tumefaciens* twin-arginine-dependent translocation is important for virulence, flagellation, and chemotaxis but not type IV secretion. *J. Bacteriol.* 185, 760–771. doi: 10.1128/JB.185.3.760-771.2003
- Fey, P., Dodson, R. J., Basu, S., and Chisholm, R. L. (2013). One stop shop for everything *Dictyostelium*: dictyBase and the Dicty Stock Center in 2012. *Methods Mol. Biol.* 983, 59–92. doi: 10.1007/978-1-62703-302-2_4
- Fey, P., Kowal, A. S., Gaudet, P., Pilcher, K. E., and Chisholm, R. L. (2007). Protocols for growth and development of *Dictyostelium discoideum*. *Nat. Protoc.* 2, 1307–1316. doi: 10.1038/nprot.2007.178
- Fields, P. I., Swanson, R. V., Haidaris, C. G., and Heffron, F. (1986). Mutants of *Salmonella typhimurium* that cannot survive within the macrophage are a virulent. *Proc. Natl. Acad. Sci. U.S.A.* 83, 5189–5193. doi: 10.1073/pnas.83.14.5189
- Haraga, A., Ohlson, M. B., and Miller, S. I. (2008). Salmonellae interplay with host cells. *Nat. Rev. Microbiol.* 6, 53–66. doi: 10.1038/nrmicro1788
- Harrison, J. J., Ceri, H., Badry, E. A., Roper, N. J., Tomlin, K. L., and Turner, R. J. (2005). Effects of the twin-arginine translocase on the structure and antimicrobial susceptibility of *Escherichia coli* biofilms. *Can. J. Microbiol.* 51, 671–683. doi: 10.1139/w05-048
- Hoffmann, C., Harrison, C. F., and Hilbi, H. (2014). The natural alternative: protozoa as cellular models for *Legionella* infection. *Cell. Microbiol.* 16, 15–26. doi: 10.1111/cmi.12235
- Jarvik, T., Smillie, C., Groisman, E. A., and Ochman, H. (2010). Short-term signatures of evolutionary change in the *Salmonella enterica* serovar Typhimurium 14028 genome. *J. Bacteriol.* 192, 560–567. doi: 10.1128/JB.01233-09
- Lavander, M., Ericsson, S. K., Bröms, J. E., and Forsberg, A. (2006). The twin arginine translocation system is essential for virulence of *Yersinia pseudotuberculosis*. *Infect. Immun.* 74, 1768–1776. doi: 10.1128/IAI.74.3.1768-1776.2006
- Marcoleta, A. E., Varas, M. A., Ortiz-Severín, J., Vásquez, L., Berríos-Pastén, C., Sabag, A. V., et al. (2018). Evaluating different virulence traits

- of *Klebsiella pneumoniae* using *Dictyostelium discoideum* and zebrafish larvae as host models. *Front. Cell. Infect. Microbiol.* 8:30. doi: 10.3389/fcimb.2018.00030
- McDonough, J. A., Hacker, K. E., Flores, A. R., Pavelka, M. S. Jr., and Braunstein, M. (2005). The twin-arginine translocation pathway of *Mycobacterium smegmatis* is functional and required for the export of mycobacterial beta-lactamases. *J. Bacteriol.* 187, 7667–7679. doi: 10.1128/JB.187.22.7667-7679.2005
- Mickael, C. S., Lam, P. K., Berberov, E. M., Allan, B., Potter, A. A., and Köster, W. (2010). *Salmonella enterica* serovar Enteritidis *tatB* and *tatC* mutants are impaired in Caco-2 cell invasion *in vitro* and show reduced systemic spread in chickens. *Infect. Immun.* 78, 3493–3505. doi: 10.1128/IAI.00090-10
- Ochsner, U. A., Snyder, A., Vasil, A. I., and Vasil, M. L. (2002). Effects of the twin-arginine translocase on secretion of virulence factors, stress response, and pathogenesis. *Proc. Natl. Acad. Sci. U.S.A.* 99, 8312–8317. doi: 10.1073/pnas.082238299
- Quertatani-Sakouhi, H., Kicka, S., Chiriano, G., Harrison, C. F., Hilbi, H., Scapozza, L., et al. (2017). Inhibitors of *Mycobacterium marinum* virulence identified in a *Dictyostelium discoideum* host model. *PLoS One* 12:e0181121. doi: 10.1371/journal.pone.0181121
- Palmer, T., and Berks, B. C. (2012). The twin-arginine translocation (Tat) protein export pathway. *Nat. Rev. Microbiol.* 10, 483–496. doi: 10.1038/nrmicro2814
- Posey, J. E., Shinnick, T. M., and Quinn, F. D. (2006). Characterization of the twin-arginine translocase secretion system of *Mycobacterium smegmatis*. *J. Bacteriol.* 188, 1332–1340. doi: 10.1128/JB.188.4.1332-1340.2006
- Pradel, N., Ye, C., Livrelli, V., Xu, J., Joly, B., and Wu, L. F. (2003). Contribution of the twin arginine translocation system to the virulence of enterohemorrhagic *Escherichia coli* O157:H7. *Infect. Immun.* 71, 4908–4916. doi: 10.1128/IAI.71.9.4908-4916.2003
- Reynolds, M. M., Bogomolnaya, L., Guo, J. B., Aldrich, L., Bokhari, D., Santiviago, C. A., et al. (2011). Abrogation of the twin arginine transport system in *Salmonella enterica* serovar Typhimurium leads to colonization defects during infection. *PLoS One* 6:e15800. doi: 10.1371/journal.pone.0015800
- Riquelme, S., Varas, M., Valenzuela, C., Vellozo, P., Chahin, N., Aguilera, P., et al. (2016). Relevant genes linked to virulence are required for *Salmonella* Typhimurium to survive intracellularly in the social amoeba *Dictyostelium discoideum*. *Front. Microbiol.* 7:1305. doi: 10.3389/fmicb.2016.01305
- Rossier, O., and Cianciotto, N. P. (2005). The *Legionella pneumophila* *tatB* gene facilitates secretion of phospholipase C, growth under iron-limiting conditions, and intracellular infection. *Infect. Immun.* 73, 2020–2032. doi: 10.1128/IAI.73.4.2020-2032.2005
- Salah, I. B., Ghigo, E., and Drancourt, M. (2009). Free-living amoebae, a training field for macrophage resistance of mycobacteria. *Clin. Microbiol. Infect.* 15, 894–905. doi: 10.1111/j.1469-0691.2009.03011.x
- Santini, C. L., Ize, B., Chanal, A., Müller, M., Giordano, G., and Wu, L. F. (1998). A novel Sec-independent periplasmic protein translocation pathway in *Escherichia coli*. *EMBO J.* 17, 101–112. doi: 10.1093/emboj/17.1.101
- Santiviago, C. A., Reynolds, M. M., Porwollik, S., Choi, S. H., Long, F., Andrews-Polymenis, H. L., et al. (2009). Analysis of pools of targeted *Salmonella* deletion mutants identifies novel genes affecting fitness during competitive infection in mice. *PLoS Pathog.* 5:e1000477. doi: 10.1371/journal.ppat.1000477
- Sillo, A., Matthias, J., Konertz, R., Bozzaro, S., and Eichinger, L. (2011). *Salmonella typhimurium* is pathogenic for *Dictyostelium* cells and subverts the starvation response. *Cell. Microbiol.* 13, 1793–1811. doi: 10.1111/j.1462-5822.2011.01662.x
- Silva, C. A., Blondel, C. J., Quezada, C. P., Porwollik, S., Andrews-Polymenis, H. L., Toro, C. S., et al. (2012). Infection of mice by *Salmonella enterica* serovar Enteritidis involves additional genes that are absent in the genome of serovar Typhimurium. *Infect. Immun.* 80, 839–849. doi: 10.1128/iai.05497-11
- Strassmann, J. E., and Shu, L. (2017). Ancient bacteria-amoeba relationships and pathogenic animal bacteria. *PLoS Biol.* 15:e2002460. doi: 10.1371/journal.pbio.2002460
- Swart, A. L., Harrison, C. F., Eichinger, L., Steinert, M., and Hilbi, H. (2018). *Acanthamoeba* and *Dictyostelium* as cellular models for *Legionella* infection. *Front. Cell. Infect. Microbiol.* 8:61. doi: 10.3389/fcimb.2018.00061
- Taylor-Mulneix, D. L., Hamidou Soumana, I., Linz, B., and Harvill, E. T. (2017). Evolution of *Bordetella* from environmental microbes to human respiratory pathogens: amoebae as a missing link. *Front. Cell. Infect. Microbiol.* 7:510. doi: 10.3389/fcimb.2017.00510
- Tsolis, R. M., Adams, L. G., Ficht, T. A., and Bäuml, A. J. (1999). Contribution of *Salmonella typhimurium* virulence factors to diarrheal disease in calves. *Infect. Immun.* 67, 4879–4885.
- Varas, M., Ortiz-Severin, J., Marcoleta, A. E., Díaz-Pascual, F., Allende, M. L., Santiviago, C. A., et al. (2017). *Salmonella* Typhimurium induces cloacitis-like symptoms in zebrafish larvae. *Microb. Pathog.* 107, 317–320. doi: 10.1016/j.micpath.2017.04.010
- Varas, M. A., Riquelme-Barrios, S., Valenzuela, C., Marcoleta, A. E., Berríos-Pastén, C., Santiviago, C. A., et al. (2018). Inorganic polyphosphate is essential for *Salmonella* Typhimurium virulence and survival in *Dictyostelium discoideum*. *Front. Cell. Infect. Microbiol.* 8:8. doi: 10.3389/fcimb.2018.00008
- Vouilhoux, R., Ball, G., Ize, B., Vasil, M. L., Lazdunski, A., Wu, L. F., et al. (2011). Involvement of the twin-arginine translocation system in protein secretion via the type II pathway. *EMBO J.* 20, 6735–6741. doi: 10.1093/emboj/20.23.6735
- Zhang, L., Zhu, Z., Jing, H., Zhang, J., Xiong, Y., Yan, M., et al. (2009). Pleiotropic effects of the twin-arginine translocation system on biofilm formation, colonization, and virulence in *Vibrio cholerae*. *BMC Microbiol.* 9:114. doi: 10.1186/1471-2180-9-114
- Zhang, S., Kingsley, R. A., Santos, R. L., Andrews-Polymenis, H., Raffatellu, M., Figueiredo, J., et al. (2003). Molecular pathogenesis of *Salmonella enterica* serotype Typhimurium-induced diarrhea. *Infect. Immun.* 71, 1–12. doi: 10.1128/IAI.71.1.1-12.2003

Conflict of Interest Statement: The authors declare that the research was conducted in the absence of any commercial or financial relationships that could be construed as a potential conflict of interest.

Copyright © 2018 Urrutia, Sabag, Valenzuela, Labra, Álvarez and Santiviago. This is an open-access article distributed under the terms of the Creative Commons Attribution License (CC BY). The use, distribution or reproduction in other forums is permitted, provided the original author(s) and the copyright owner(s) are credited and that the original publication in this journal is cited, in accordance with accepted academic practice. No use, distribution or reproduction is permitted which does not comply with these terms.