

RESEARCH ARTICLE

The CbrB Regulon: Promoter dissection reveals novel insights into the CbrAB expression network in *Pseudomonas putida*

Rocío Barroso¹, Sofía M. García-Mauriño¹, Laura Tomás-Gallardo², Eloisa Andújar³, Mónica Pérez-Alegre³, Eduardo Santero¹, Inés Canosa^{1*}

1 Universidad Pablo de Olavide, Centro Andaluz de Biología del Desarrollo/ Consejo Superior de Investigaciones Científicas/ Junta de Andalucía, Seville, Spain, **2** Proteomics and Biochemistry unit, UPO/ CABD/CSIC/JA, Seville, Spain, **3** Genomics unit, CABIMER/ CSIC/ Universidad de Sevilla/ Universidad Pablo de Olavide/ Junta de Andalucía, Seville, Spain

☞ These authors contributed equally to this work.

✉ Current address: Instituto de Investigaciones Químicas (IIQ) Centro de Investigaciones Científicas Isla de la Cartuja (cicCartuja) Universidad de Sevilla, Seville, Spain

* icanper@upo.es



OPEN ACCESS

Citation: Barroso R, García-Mauriño SM, Tomás-Gallardo L, Andújar E, Pérez-Alegre M, Santero E, et al. (2018) The CbrB Regulon: Promoter dissection reveals novel insights into the CbrAB expression network in *Pseudomonas putida*. PLoS ONE 13(12): e0209191. <https://doi.org/10.1371/journal.pone.0209191>

Editor: Livia Leoni, Università degli Studi Roma Tre, ITALY

Received: October 29, 2018

Accepted: November 30, 2018

Published: December 17, 2018

Copyright: © 2018 Barroso et al. This is an open access article distributed under the terms of the [Creative Commons Attribution License](https://creativecommons.org/licenses/by/4.0/), which permits unrestricted use, distribution, and reproduction in any medium, provided the original author and source are credited.

Data Availability Statement: All relevant data are within the manuscript and its Supporting Information files.

Funding: This work was supported by the Spanish Ministry of Economy, Industry y Competitividad, grant BIO2014-57545-R awarded to IC and ES. The funder had no role in study design, data collection and analysis, decision to publish, or preparation of the manuscript.

Abstract

CbrAB is a high ranked global regulatory system exclusive of the Pseudomonads that responds to carbon limiting conditions. It has become necessary to define the particular regulon of CbrB and discriminate it from the downstream cascades through other regulatory components. We have performed *in vivo* binding analysis of CbrB in *P. putida* and determined that it directly controls the expression of at least 61 genes; 20% involved in regulatory functions, including the previously identified CrcZ and CrcY small regulatory RNAs. The remaining are porines or transporters (20%), metabolic enzymes (16%), activities related to protein translation (5%) and *orfs* of uncharacterised function (38%). Amongst the later, we have selected the operon *PP2810-13* to make an exhaustive analysis of the CbrB binding sequences, together with those of *crcZ* and *crcY*. We describe the implication of three independent non-palindromic subsites with a variable spacing in three different targets; CrcZ, CrcY and operon *PP2810-13* in the CbrAB activation. CbrB is a quite peculiar σ^N -dependent activator since it is barely dependent on phosphorylation for transcriptional activation. With the depiction of the precise contacts of CbrB with the DNA, the analysis of the multimerisation status and its dependence on other factors such as RpoN or IHF, we propose a model of transcriptional activation.

Introduction

The ability to recognize and convert external environmental stimuli into appropriate physiological responses is of fundamental importance for all organisms. Several distinct global regulatory networks can participate in co-ordinating gene expression programmes under different situations. In bacteria, signal transduction is predominantly mediated by two-component regulatory systems (TCSs) consisting of a sensor kinase (SK) and a cognate response regulator

Competing interests: The authors have declared that no competing interests exist.

(RR), which are the principal tools by which bacteria sense and respond to different external signals [1].

Bacteria of the genus *Pseudomonas* are ubiquitous and very versatile, capable of adapting to very different habitats due to a complex regulatory network that ensures the appropriate responses to each context. The control on cellular carbon-nitrogen balance and determination of the order in which growth substrates are degraded is, in particular, mediated by the TCS CbrAB, which is exclusive of the *Pseudomonaceae* and found in the genera *Pseudomonas* [2–4] and *Azotobacter* [5]. The preferred carbon sources for the genus *Pseudomonas* are some organic acids or amino acids, rather than glucose, which is the preferred one in Enterobacteria. CbrAB TCS not only controls the assimilation of several amino acids (e.g. histidine, proline or arginine) as carbon or carbon and nitrogen sources but a number of other physiological functions, such as chemotaxis or stress tolerance [6]. CbrB directly activates the expression of the gene coding for the small regulatory RNA CrcZ in *P. putida*, *P. aeruginosa* and *P. syringae* [4, 7, 8], and in *P. putida* it also activates the expression of another regulatory RNA, CrcY [7, 9]. CrcZ and CrcY are directly related to the Carbon Catabolite Repression (CCR) in *P. putida* since they sequester and inactivate the protein responsible for such event; Crc, which acts in turn, as a translational repressor of its own targets [8–10]. Most Crc molecules can be sequestered by these sRNAs, although enough free Hfq is still available to perform other functions without the help of Crc. Maximal CCR is observed in the rich LB medium where the expression of CrcZ and CrcY is the lowest, and CCR is minimal in non-preferential carbon sources such as histidine or oxaloacetate [11].

Transcriptomic analyses in *Pseudomonas* indicate that CbrAB is likely to be an important transcriptional control system implicated in environmental sensing and adaptation [6, 12]. Indeed, the importance of CbrB is also reflected in its conservation among the *Pseudomonadales*, and also shows some specialization among some members which have evolved to regulate regulatory RNAs; CrcY in *P. aeruginosa* strains PAO1, PA14 or PA7, or in *P. mendocina* ymp., CrcZ and CrcY for *P. putida* KT2442, F1, GB-1 and W619 [9] or CrcZ, CrcY and CrcX in the case of *P. syringae* [13]. Interestingly, in *Azotobacter vinelandii* where the CbrAB system has been described, there also are orthologues of CrcZ and CrcY regulatory RNAs [4, 14]. The *Azotobacter* case is consistent with suggestions that *A. vinelandii* may in fact be a *Pseudomonad* based on genome similarity [15].

σ^N -dependent transcriptional activators are usually dimers that bind to palindromic sequences located far upstream of the promoter. These regulators activate RNA-polymerase transcription at a distance *via* formation of a loop in the intervening DNA, which may be assisted by the protein IHF which binds between the promoter and the enhancer and induces a bend in the DNA upon binding that favours the interaction of the RNA polymerase-promoter closed complex and the enhancer-bound transcriptional activator [16, 17]. Tandem duplication of the palindromic sequences is very frequent to facilitate hexamerisation of the activator upon binding, an oligomerisation required for gaining ATP-hydrolysis and transcription activation capability [18]. However, CbrB has an unusual way of binding since it apparently binds two to three non-palindromic sequences spaced by 12–16 nucleotides [7, 19]. By combining mutational analyses and CbrB binding assays, this work aims to determine the sequences required for binding at selected promoters, the regulon directly controlled by CbrB and a pattern to find other regulated targets from sequence homology.

Results

In vivo CbrB binding analysis

Although our previous work using standard molecular methods such as Electrophoretic Mobility Shift Assays (EMSA) and DNA footprinting analysis showed that CbrB binds to

regions upstream *crcZ* and *crcY*, and identified the precise binding contacts of CbrB in these promoter regions [7], we performed a genome-wide screen for CbrB binding sequences throughout the complete genome in order to better define the CbrB binding site and its primary regulon. For that purpose we performed a ChIP-Seq analysis where immunoprecipitation of complexes of CbrB bound to its DNA targets were performed in the conditions of maximal induction of the *Cbr* system (i.e. OAA 20 mM as carbon source) [11]. After normalization and Peak calling filtration, a total of 314 immunoprecipitated DNA fragments showed an enrichment of at least 2-fold with a p-value $< 10^{-10}$. Out of those, 67 peaks contained at least one intergenic region, and some of them contained more than one. The resulting fragments were used for the search of putative σ^N -dependent sequences in the right orientation (facing an *orf*) and a total of 61 individual DNA fragments following these premises were selected. To ensure that the putative CbrB binding sites were contained in these fragments, 100 bp were added upstream and downstream for the determination of a consensus sequence. The complete list of the candidate CbrB regulated genes is presented in Table 1, and some captures of the genomic regions that were further analysed are shown in S1 Fig. As an internal quality control for experiment, we detected a 4.3 and 2.6 -fold enrichment after immunoprecipitation of the two previously characterised CbrB targets *CrcZ* and *CrcY*, respectively.

Out of the selected DNA fragments, 12 of the *orfs* coded for proteins fitting the category of transport of different elements or molecules, 12 of them for regulatory proteins, thus possibly widening the CbrB regulatory cascade, 10 corresponded to proteins with putative enzymatic activities, one encoded FlgB involved in flagellar assembly with a putative role in motility, and 3 encoded proteins somehow related to translation. Finally, 23 of them corresponded to genes of unknown function annotated as hypothetical.

To determine if the DNA fragments selected in the *in vivo* binding experiment are associated with CbrB-dependent regulation, the expression of 12 targets including *crcZ* was analysed by quantitative RT-PCR (or β -galactosidase activity for PP2810) in a wild type and $\Delta cbrB$ backgrounds in a medium containing oxaloacetate as carbon source (Table 2). These targets were PP0952 encoding the sigma factor RpoN, PP1206 encoding the porin OprD, PP2810 and PP3009 encoding proteins of unassigned function, PP3074 encoding a putative permease, PP3420 encoding a putative histidine kinase, PP3656 encoding an aromatic compound-specific porin, PP4050 (*glgA*) encoding a glycogen synthase, PP4391 encoding the flagellar basal-body rod protein FlgB, PP4486 encoding a putative lysine/arginine/ornithine ABC transporter substrate-binding protein, PP4643 encoding a putative xanthine/uracil permease family protein and the gene *crcZ* encoding for the regulatory RNA *CrcZ*. Validation of the expression of the genes performed by quantitative RT-PCR showed that 7 of these targets were upregulated in the wild type strain (CbrB activated) and 3 of them were downregulated (CbrB repressed) (Table 2). Two of the genes (PP3009 and PP3656) did not show a significant difference in expression between the two strains by RT-qPCR analysis, although the fold enrichment in the ChIP-Seq was over the selected threshold.

Binding of CbrB to the promoter regions of some of the validated targets was analysed in order to acknowledge its direct interaction *in vitro*. We were able to detect a mobility shift for DNA fragments containing the promoter regions of PP2810, PP1206 and PP3420 (Fig 1A). However, a change in the mobility for PP4050 *glgA*, PP3074 permease or PP4391 (*flgB*) was not detected *in vitro* (S2 Fig). A possible reason could be that the affinity of CbrB itself for these targets is too low or other elements that are absent in the EMSA assay might be needed for CbrB binding.

Sequence inspection of the promoter region of the selected genes that were experimentally validated by EMSA for CbrB binding revealed a disposition coherent to that previously described for *CrcZ* and *CrcY*, that is, one subsite in the forward orientation (F1) and two

Table 1. List of the 61 selected targets after data mining in the CHIP-Seq analysis. The ID, annotation of the gene downstream the selected promoter region, fold enrichment of the peak, functional category and selected DNA fragments and peak coordinates in the *P. putida* KT2440 reference genome (GCF_000007565.1_ASM756v1) are shown. In bold, those genes whose expression was validated by RT-q PCR.

| | ID | Annotation | Enrichment | Categories | DNA Fragment Coordinates | | Peak Coordinates | |
|----|---------------|--|------------|--------------|--------------------------|---------|------------------|---------|
| 1 | PP0009 | <i>rpmH</i> 50S ribosomal protein L34 | 2.33 | Translation | 8847 | 9524 | 8860 | 9424 |
| 2 | PP0036 | transcriptional regulator | 2.74 | Regulatory | 38954 | 39371 | 38757 | 39399 |
| 3 | PP0153 | hypothetical protein | 4.32 | hypothetical | 161866 | 162366 | 161930 | 162266 |
| 4 | PP0167 | <i>paxB</i> toxin secretion ATP-binding protein | 3.06 | transport | 193553 | 194537 | 193652 | 194437 |
| 5 | PP0168 | putative surface adhesion protein | 3.06 | transport | 193553 | 194537 | 193652 | 194437 |
| 6 | PP0397 | <i>yeaG</i> protein kinase | 2.53 | Regulatory | 484338 | 484816 | 483915 | 484716 |
| 7 | PP0640 | hypothetical protein | 3.08 | hypothetical | 750762 | 751127 | 748555 | 751027 |
| 8 | PP0731 | pcs phosphatidylcholine synthase | 4.19 | enzymatic | 850001 | 850910 | 850100 | 850810 |
| 9 | PP0876 | AraC family transcriptional regulator | 2.93 | Regulatory | 1017151 | 1018026 | 1017172 | 1017926 |
| 10 | PP0952 | <i>rpoN</i> RNA polymerase sigma-54 factor | 2.70 | Regulatory | 1095959 | 1096333 | 1095946 | 1096355 |
| 11 | PP1116 | resolvase family site-specific recombinase | 2.09 | enzymatic | 1277917 | 1278833 | 1278016 | 1278868 |
| 12 | PP1117 | hypothetical protein | 2.13 | hypothetical | 1279998 | 1281314 | 1280097 | 1281388 |
| 13 | PP1206 | <i>oprD</i> basic amino acid specific porin OprD | 3.45 | transport | 1386355 | 1387119 | 1386334 | 1387019 |
| 14 | PP1288 | algD GDP-mannose 6-dehydrogenase | 2.30 | enzymatic | 1474119 | 1474995 | 1474152 | 1474895 |
| 15 | PP1691 | hypothetical protein | 3.03 | hypothetical | 1883564 | 1884708 | 1883621 | 1884716 |
| 16 | PP1796 | <i>aprDB</i> (pseudogene) | 2.44 | transport | 2016394 | 2017010 | 2016493 | 2016929 |
| 17 | PP1795 | hypothetical protein | 2.44 | hypothetical | 2016394 | 2017009 | 2016493 | 2016929 |
| 18 | PP1947 | hypothetical protein | 2.32 | hypothetical | 2202041 | 2202420 | 2202121 | 2202416 |
| 19 | PP2062 | hypothetical protein | 3.79 | hypothetical | 2345245 | 2346642 | 2344373 | 2346596 |
| 20 | PP2063 | hypothetical protein | 3.79 | hypothetical | 2345245 | 2346643 | 2344373 | 2346596 |
| 21 | PP2265 | <i>folD</i> -II bifunctional methylenetetrahydro- folate dehydrogenase/ cyclohydrolase | 3.38 | enzymatic | 2585408 | 2585860 | 2585507 | 2586482 |
| 22 | PPt50 | tRNA | 3.38 | Translation | 2585408 | 2585860 | 2585507 | 2586482 |
| 23 | PP2509 | hypothetical protein | 3.14 | hypothetical | 2856629 | 2858405 | 2856721 | 2858305 |
| 24 | PP2541 | transcriptional factor-like protein | 3.38 | Regulatory | 2885949 | 2887273 | 2886048 | 2887173 |
| 25 | PP2810 | hypothetical protein | 2.98 | hypothetical | 3202675 | 3203315 | 3202705 | 3203215 |
| 26 | PP2858 | hypothetical protein | 2.75 | hypothetical | 3261156 | 3261619 | 3261202 | 3261519 |
| 27 | PP3009 | hypothetical protein | 2.61 | hypothetical | 3401602 | 3401909 | 3401381 | 3403370 |
| 28 | PP3012 | hypothetical protein | 2.61 | hypothetical | 3402885 | 3403137 | 3401381 | 3403370 |
| 29 | PP3026 | tail length determination protein | 2.49 | enzymatic | 3412722 | 3413087 | 3412295 | 3412987 |
| 30 | PP3074 | <i>bhbP</i> D-beta-hydroxybutyrate permease | 7.52 | transport | 3458628 | 3459012 | 3458727 | 3459050 |
| 31 | PP3110 | hypothetical protein | 3.08 | hypothetical | 3519365 | 3521861 | 3519464 | 3521761 |
| 32 | PP3238 | transcriptional regulator PyrR | 5.68 | Regulatory | 3674453 | 3674883 | 3674528 | 3674923 |
| 33 | PP3420 | sensor histidine kinase | 3.38 | Regulatory | 3872278 | 3872784 | 3872243 | 3872733 |
| 34 | PP3441 | hypothetical protein | 3.06 | hypothetical | 3899036 | 3899523 | 3899048 | 3899562 |
| 35 | PP3540b | <i>crcY</i> regulatory RNA | 2.57 | Regulatory | 4013035 | 4013244 | 4013134 | 4013436 |
| 36 | PP3656 | aromatic compound-specific porin | 2.62 | transport | 4153120 | 4153479 | 4152926 | 4153689 |
| 37 | PP3791 | site-specific recombinase | 2.40 | enzymatic | 4320663 | 4321941 | 4320709 | 4321841 |
| 38 | PP3929 | hypothetical protein | 2.52 | hypothetical | 4433801 | 4434112 | 4433900 | 4434166 |
| 39 | PP4035 | <i>pydP</i> NCS1 family transporter PydP | 4.28 | transport | 4547243 | 4547785 | 4547294 | 4547771 |
| 40 | PP4050 | <i>glgA</i> glycogen synthase | 2.56 | enzymatic | 4563758 | 4564712 | 4320709 | 4321841 |
| 41 | PP4070 | hypothetical protein | 3.42 | hypothetical | 4594982 | 4595629 | 4595080 | 4595540 |
| 42 | PP4095 | hypothetical protein | 3.06 | hypothetical | 4630123 | 4631174 | 4629477 | 4631074 |
| 43 | PP4283 | GntR family transcriptional regulator | 2.52 | Regulatory | 4874432 | 4874908 | 4874476 | 4874808 |
| 44 | PP4309 | NCS1 family transporter | 3.29 | transport | 4899939 | 4900526 | 4899956 | 4900426 |
| 45 | PP4391 | <i>flgB</i> flagellar basal-body rod protein FlgB | 2.44 | motility | 4983449 | 4983813 | 4983435 | 4983713 |

(Continued)

Table 1. (Continued)

| ID | Annotation | Enrichment | Categories | DNA Fragment Coordinates | | Peak Coordinates | |
|----|---------------|---|------------|--------------------------|---------|------------------|-----------------|
| 46 | PP4424 | HTH-type transcriptional regulator | 2,36 | Regulatory | 5020010 | 5020411 | 5019442 5020946 |
| 47 | PP4451 | hypothetical protein | 2,12 | hypothetical | 5049257 | 5050611 | 5048284 5050511 |
| 48 | PP4471 | <i>mgtE</i> magnesium transporter | 2,26 | transport | 5078705 | 5079252 | 5078804 5080022 |
| 49 | PP4474 | <i>alaS</i> alanine—tRNA ligase | 2,60 | enzymatic | 5084164 | 5084605 | 5084244 5084505 |
| 50 | PP4486 | <i>argT</i> lysine /arginine /ornithine ABC transporter substrate-binding protein | 2,48 | transport | 5096664 | 5097230 | 5096657 5097130 |
| 51 | PP4520 | hypothetical protein | 4,01 | transport | 5132506 | 5133016 | 5132454 5133090 |
| 52 | PP4643 | xanthine/uracil permease family protein | 2,70 | transport | 5267050 | 5267512 | 5267006 5267505 |
| 53 | <i>crcZ</i> | CrcZ regulatory RNA | 4,32 | Regulatory | 5338050 | 5338276 | 5338149 5338829 |
| 54 | PP_t72 | tRNA | 2,87 | Translation | 5361078 | 5361701 | 5360562 5361611 |
| 55 | PP4739 | hypothetical protein | 2,40 | hypothetical | 5391562 | 5392963 | 5391661 5392863 |
| 56 | PP4925 | hypothetical protein | 3,05 | hypothetical | 5604183 | 5604622 | 5602819 5604793 |
| 57 | PP5129 | hypothetical protein | 3,46 | hypothetical | 5852185 | 5852693 | 5851137 5852593 |
| 58 | PP5184 | <i>spuI</i> glutamylpolyamine synthetase | 2,88 | transport | 5912049 | 5912822 | 5912040 5912970 |
| 59 | PP5212 | iron-sulfur-binding oxidoreductase | 2,66 | transport | 5944133 | 5944664 | 5944232 5944589 |
| 60 | PP5376 | hypothetical protein | 2,64 | hypothetical | 6127775 | 6128896 | 6127848 6128801 |
| 61 | PP5375 | LysR family transcriptional regulator | 2,64 | Regulatory | 6127775 | 6128895 | 6127848 6128801 |

<https://doi.org/10.1371/journal.pone.0209191.t001>

additional subsites in the reverse orientation (R1 and R2) with a proper spacing between them (20–25 pb from the centres of two contiguous sites) (Fig 1B). All these binding subsites are topologically aligned at the same face of the DNA helix and those activated ones, such as in CrcZ and CrcY, at an appropriate distance from the σ^N promoter. In the *crcY* sequence an additional sequence denoted R' is also found (Fig 1B). The sequence worst matching this arrangement was that of PP3420, in which a proper R2 subsite could not be recognised. In agreement with this, it actually was the sequence showing lowest affinity for CbrB (Fig 1A).

Characterisation of the CbrB-mediated regulation of the PP2810-13 target

In order to define a more precise CbrB consensus sequence we intensively studied the contribution of the putative CbrB binding subsites in the two previously characterised targets *crcZ* and *crcY*, coding for sRNAs, and in a new protein-coding operon target, comprising genes PP2810 to PP2813 [20], whose promoter region showed good binding of CbrB. The first two *orfs* in this operon do not show sequence homology to any characterised protein and are annotated as hypothetical proteins. Nevertheless PP2812 is annotated as a transporter and PP2813 as a BNR (bacterial neuraminidase repeat) domain-containing protein. Although the degree of sequence homology of PP2810-13 in the databases was relatively low, structural modelling using the appropriate tools for protein homology detection and structure prediction (HHPred) [21] suggests they may conform a RND efflux pump. RND-type efflux pumps form multi-protein structures that bridge both the inner and outer membrane to expel diverse toxic compounds directly from the cell. Therefore, we decided to characterise its putative CbrB-mediated regulation.

The intergenic region between the stop codon of PP2809 and the ATG of PP2810 comprises 472 bp and apparently contains all elements required for CbrB-activated transcription of the operon [7] (Fig 2A). In the first place, the consensus GG-N₁₀-GC sequence characteristic of σ^N -dependent promoters was found centred at -127 with respect to the start codon. Also, an IHF consensus sequence was detected in the DNA region comprising coordinates -165 to -189, in the region in between the putative CbrB and the σ^N binding sites. As previously

Table 2. Validation of the ChIP-Seq data by RT-qPCR. Expression analysis of the selected genes was performed in a wild type and *cbrB* mutant strains collected at mid-exponential phase in a minimal medium containing OAA as carbon source. ChIP-Seq enrichment and mRNA levels determined by real-time RT-PCR are shown. Fold change values were calculated dividing the mRNA levels observed in the strain KT2442 by the levels in the *cbrB* mutant strain (MPO401). A minimum of three biological replicates for each sample in triplicates were performed. Stars designate p-values for the Student's t-test for unpaired samples not assuming equal variance and are referred to the wild type strain. *: p<0.05; **: p<0.01; ***: p<0.005.

| ID | Gene-Annotation | ChIP-Seq enrichment | RT-qPCR Fold change | mRNA levels (arbitrary units) | | t-test | |
|-------------|---|---------------------|---------------------|-------------------------------|---------------|----------|----------------|
| | | | | KT2442 | MPO401 | | |
| PP0952 | <i>rpoN</i> - RNA polymerase sigma-54 factor | 2.7 | 0.1 | 0.24 ± 0.06 | 1.78 ± 0.64 | 1,92E-03 | ** |
| PP1206 | <i>oprD</i> - basic amino acid specific porin OprD | 3.45 | 0.3 | 1.71 ± 0.85 | 5.77 ± 1.64 | 9,25E-04 | *** |
| PP2810 | hypothetical protein | 2.98 | 20.6 [#] | | | | |
| PP3009 | hypothetical protein | 2.61 | 1.0 | 0.30 ± 0.09 | 0.30 ± 0.11 | 9,74E-01 | no differences |
| PP3074 | <i>bhbP</i> - D-beta-hydroxybutyrate permease | 7.52 | 5.7 | 0.68 ± 0.25 | 0.12 ± 0.09 | 7,94E-05 | *** |
| PP3420 | sensor histidine kinase | 3.38 | 11,7 | 0.70 ± 0.16 | 0.06 ± 0.02 | 8,53E-08 | *** |
| PP3656 | aromatic compound-specific porin | 2.62 | 1.1 | 0.015 ± 0.006 | 0.014 ± 0.003 | 6,20E-01 | no differences |
| PP4050 | <i>glgA</i> - glycogen synthase | 2.56 | 0.7 | 0.23 ± 0.07 | 0.33 ± 0.04 | 9,85E-05 | *** |
| PP4391 | <i>flgB</i> - flagellar basal-body rod protein FlgB | 2.44 | 4.7 | 5.87 ± 0.92 | 1.26 ± 0.17 | 1,11E-09 | *** |
| PP4486 | <i>argT</i> - lys/arg/orn ABC transp. substrate-binding protein | 2.48 | 2.8 | 0.36 ± 0.11 | 0.13 ± 0.04 | 2,74E-03 | ** |
| PP4643 | xanthine/uracil permease family protein | 2.7 | 3.4 | 0.034 ± 0.01 | 0.01 ± 0.002 | 2,31E-03 | ** |
| <i>crcZ</i> | <i>CrcZ</i> - regulatory RNA | 4.32 | 43.5 | 170.39 ± 39.17 | 3.92 ± 0.52 | 3,40E-03 | ** |

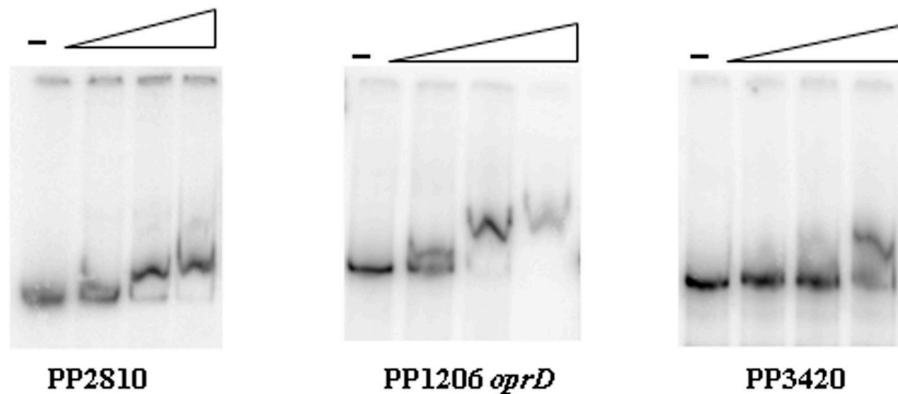
[#] Expression ratio for PP2810 was estimated as the β-galactosidase activity ratio using a transcriptional fusion to *lacZ* (see Fig 2).

<https://doi.org/10.1371/journal.pone.0209191.t002>

described, IHF contributes to the correct assembly of transcription initiation complexes at a number of σ^N-dependent promoters by inducing a curvature in the DNA, and assists CbrB-mediated transcription activation of *crcZ* and *crcY* (7). In addition to the three subsites putatively conforming a CbrB binding site, a sequence with perfect match with the forward subsite of the previously defined CbrB binding site (TGTTAC) [19] was found in the promoter region of the operon, although very far upstream, centred at -411, and separated from F1 by 149 nucleotides (denoted F' in Fig 2A).

To validate the CbrB-mediated regulation of this operon and analyse its dependence on the above elements, a transcriptional fusion of the promoter region of PP2810 (containing 462 bp upstream of the ATG) to *lacZ* was constructed (plasmid pMPO420). Its expression was analysed by β-galactosidase activity in LB as a rich medium, in a minimal medium containing succinate, which constitute a preferential carbon source in *Pseudomonas*, or oxaloacetate as a non-preferential carbon source, in the wild type strain, in a *cbrB* mutant (strain MPO401) and in an *ihf* mutant (IHF3). β-galactosidase activity of the wild type strain bearing the plasmid pMPO420 showed basal expression levels that were not dependent on CbrB when grown in LB. However, it showed a 4.3- and 20.6-fold increase in a minimal medium containing succinate and oxaloacetate as carbon source, respectively, compared to LB (Fig 2B). Also, the activity in the Δ*cbrB* and *ihf* backgrounds was drastically reduced in the three media to basal levels,

A



B

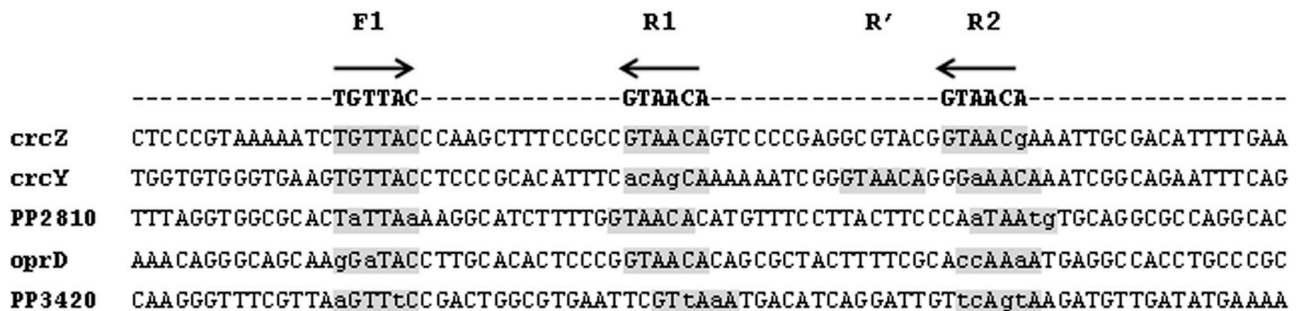


Fig 1. (A) Electrophoretic mobility shift assay (EMSA) for CbrB binding on PP2810, PP1206 (*oprD*) and PP3420 promoter regions. Band shift observed in linear dsDNA fragments containing the promoter regions in the presence of increasing amounts of CbrB (0, 1, 1.5 and 2 μM for PP2810 and 0, 0.5, 1 and 2 μM of CbrB for PP1206 and PP3420). A representative assay of three replicas performed is shown. (B) Sequence alignment of the promoter sequences of *crcZ*, *crcY*, PP2810, *oprD* and PP3420 containing the CbrB binding sites. Grey boxes denote putative CbrB binding subsites in direct (type F) or reverse orientation (type R). In lowercase letters those bases that differ with the consensus sequence, which is denoted at the top.

<https://doi.org/10.1371/journal.pone.0209191.g001>

thus showing a clear dependence on both CbrB and IHF for activation of the operon transcription, as previously shown for *crcZ* and *crcY* [7].

Mutational analysis of *crcZ*, *crcY* and PP2810 promoter regions and definition of a CbrB binding site

We have previously shown a direct activation by CbrB and its direct binding to the promoter targets *crcZ*, *crcY* [7]. To more precisely define the CbrB contacts with the DNA, we performed mutation analyses of each potential subsite found at each promoter. The *crcZ*, *crcY* and PP2810 targets contain at least three putative CbrB binding subsites (F1, R1 and R2). However, *crcY* presented an extra perfect R sequence (R': GTAACA) centred at position -112 from the start codon (Fig 1B) and PP2810 an extra perfect F sequence (F': TGTTAC) centred at position -411 from the ATG (Fig 2A) with no counterparts in the other promoter regions. Deletion of

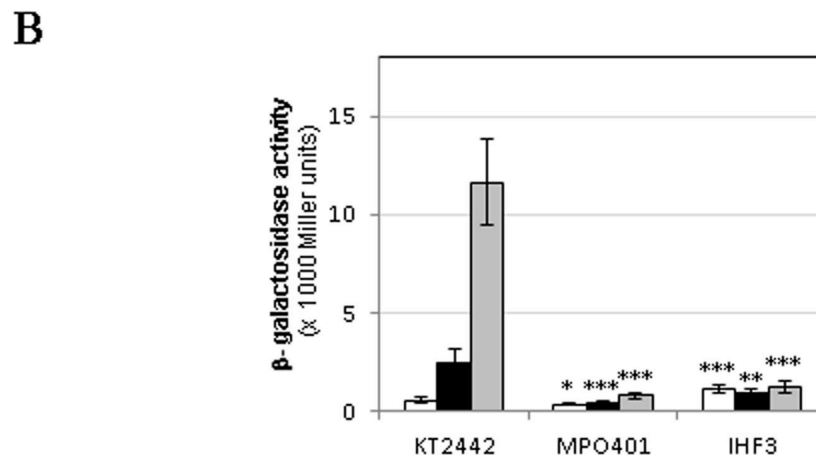
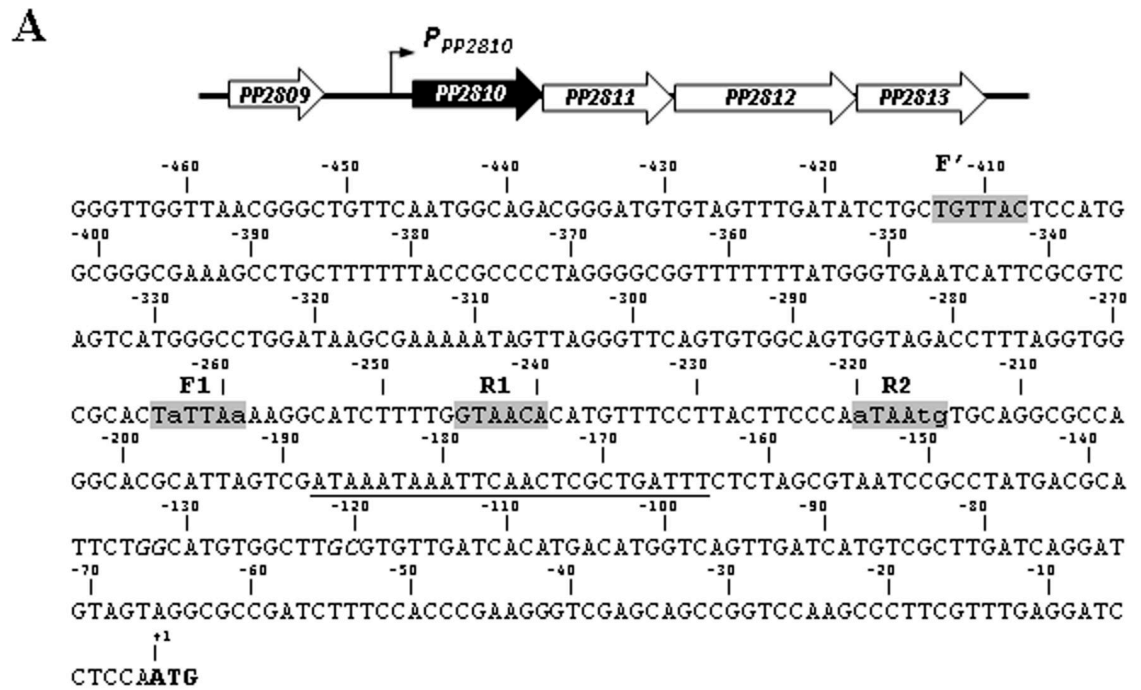


Fig 2. (A) Genomic context and sequence of operon *PP2810-PP2813*. Genomic context of *PP2810* scheme in *Pseudomonas putida* along with its promoter sequence from the position -467 with respect to the initiation of translation (ATG, in bold). Sequences in grey correspond to CbrB binding subsites; the underlined sequence represents the σ^N -dependent promoter sequence (GG-N₁₀-GC) and the boxed sequence represents the putative IHF binding site. (B) *In vivo* expression from the *P. putida PP2810* promoter. Expression was measured as β -galactosidase activity of the *PP2810::lacZ* transcriptional fusions (plasmid pMPO420) of cultures of the KT2442 wild-type, the MPO401 ($\Delta cbrB$) and IHF3 mutant strains, grown in LB (white bars) or in minimal medium containing succinate (black) or oxaloacetate (grey bars) as carbon sources. The values are the average of at least three independent assays. The error bars indicate the standard deviation of the means. Stars designate p-values for the Student's t-test for unpaired samples not assuming equal variance and are referred to the wild type strain. *: p<0.05; **: p<0.01; ***: p<0.005.

<https://doi.org/10.1371/journal.pone.0209191.g002>

the furthestmost F' subsite of *PP2810* (plasmid pMPO422) did not alter at all the ability of CbrB to activate *PP2810* expression (12700 M.U. for pMPO420 in OAA versus 12300 for pMPO422), thus indicating that this putative subsite is dispensable. Contribution of the extra R' subsite to the *crcY* transcriptional activation has been evaluated together with the other three CbrB binding subsites (F1, R1 and R2) by substitution mutagenesis (see below).

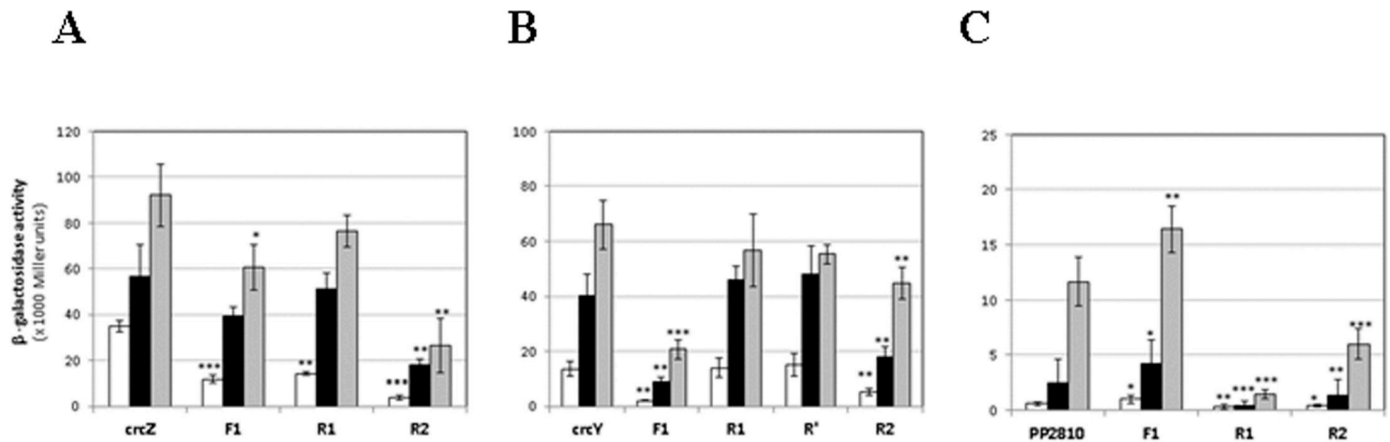


Fig 3. In vivo expression of *crcZ*, *crcY* and *PP2810* of *P. putida* and point mutagenesis of the CbrB binding sites. Expression was measured as β-galactosidase activity of the *crcZ* (A), *crcY* (B) and *PP2810* (C) *-lacZ* transcriptional fusions of the promoter region or the corresponding substituted sites F1, R1 or R2 in LB (white bars), minimal medium with succinate (black bars) and oxaloacetate (grey bars) as carbon source. Plasmids pMPO1316, pMPO1314 and pMPO422 contained the wild type sequences for *crcZ*, *crcY* and *PP2810*, respectively. Substitutions of F1, R1 (R') and R2 were generated in plasmids pMPO436, pMPO437 and pMPO438 for *crcZ*, pMPO439, pMPO440 (pMPO441) and pMPO442 for *crcY* and plasmids pMPO425, pMPO426 and pMPO428 for *PP2810*. The values are the average of at least three independent assays. The error bars indicate the standard deviation of the means of at least three independent assays. Stars designate p-values for the Student's t-test for unpaired samples not assuming equal variance and are referred to the wild type sequence of each promoter. *: p < 0.05; **: p < 0.01; ***: p < 0.005.

<https://doi.org/10.1371/journal.pone.0209191.g003>

To determine the role of each subsite in transcription activation at the *crcZ*, *crcY* and *PP2810* promoter regions, 6-bp substitutions on F1, R1, R' and R2 subsites were performed, and cloned into plasmid pMPO234, thus yielding transcriptional fusions of each promoter variant to *lacZ* (see legend of Fig 3 and S1 Table for sequence substitutions). β-galactosidase activity of the plasmids containing the wild type sequences and the substitution of each subsite for P_{crcZ} , P_{crcY} and P_{PP2810} was assayed in LB and in minimal medium with succinate or oxaloacetate as the sole carbon sources (Fig 3).

The three targets were differentially expressed in the assayed media, and the induction was inversely proportional to the carbon availability in the medium; that is, maximal expression took place in the poorest medium (OAA), and lowest expression in the richest one (LB). The expression pattern for *PP2810* coincided to that of *crcZ* and *crcY* previously described [7, 11], and was mainly dependent on CbrB as shown in a *cbrB* background where it was non-significant (Fig 2 and S3 Fig). The expression levels were highest for *crcZ* in OAA (92,200 M.U.) followed by those of *crcY* (66,000 M.U.) and finally those of *PP2810*, which showed almost 8-fold less expression than *crcZ*. However, the induction rate was maximal for *PP2810*, which was upregulated 20.6-fold in OAA relative to LB and 4.8-fold relative to succinate, as compared to the 2.6- and 1.6-fold induction rates, respectively, found for *crcZ*, or the 4.8 and 1.6 fold, respectively, found for *crcY* (Fig 3). This fact is mainly due to the low expression levels of *PP2810* in LB, which is in contrast with the low but significant CbrB-mediated activation observed for *crcZ* and *crcY* in this rich medium (S3 Fig) [7]. These values suggest that the *PP2810* promoter region is the least sensitive to CbrB activity and requires the most carbon-limited medium for high levels of expression, while the *CrcZ* and *CrcY* small RNAs are highly activated in the presence of low amounts of active CbrB. Nevertheless, the three of them presented the same defined hierarchy of induction in response to the appropriate carbon source.

Substitution of each one of the subsites independently for each target affected the transcriptional activation in a different manner. Although all substitutions had a substantial effect on *crcZ* expression (Fig 3A) it was the substitution of R2 (GTAACg to taccgt) the one showing the most drastic effect for *crcZ* transcription (9.7-, 3.1- and 3.5- fold decrease in LB, Scc and OAA,

respectively). In contrast, it was subsite F1 (TGTTAC to gactct) the subsite that most affected *crcY* expression (6.6-, 4.5- and 3.2-fold decrease in LB, Scc and OAA, respectively), whilst it was R1 (GTAACA to agcctc) the most important for *PP2810* expression (2.0-, 6.2- and 8.2-fold decrease in LB, Scc and OAA, respectively). Substitution of subsites R1 or R' of P_{crcY} had no effect on *crcY* expression, and R2 had a milder effect than F1 (Fig 3B). Substitution of R2 in *PP2810* had an obvious but less severe effect than R1 substitution, whilst substitution of F1 even had a positive effect on *PP2810* expression (Fig 3C).

CbrB binding affinities are consistent with the contribution of each of its binding subsites to expression

The binding affinity of CbrB to DNA fragments containing the wild type sequences of the *crcZ*, *crcY* or *PP2810* promoters, and their substituted versions of F1, R1, R' or R2 was analysed in EMSA assays (Fig 4). First, the affinity of CbrB to the promoter region of *PP2810* resulted lower to that of *crcZ* and *crcY*, which is consistent with a lower expression levels, especially in less carbon-limited conditions such as succinate or LB.

Substitution of any of the subsites F1, R1 or R2 for P_{crcZ} (which are perfect matches in sequence) resulted in an inability of CbrB to bind to the DNA fragment, although they retained partial activity for transcriptional activation with two conserved subsites (Fig 3). This fact shows that *in vitro* binding is most sensitive to a change in the equilibrium of interactions of CbrB with the DNA, than *in vivo* activation. Substitution of F1 in P_{crcY} prevented CbrB binding, while the substitution of R1 slightly reduced its binding affinity. Alteration of R' and R2 did not significantly affect the binding affinity of CbrB to P_{crcY} . In the case of *PP2810*, the only sequence that prevented CbrB binding was R1, which is the most similar to the consensus, and substitution F1 or R2 (poorly conserved) did not cause any obvious alteration.

Interestingly, alteration of the putative CbrB-binding subsites in the targets *crcY* and *PP2810* had a parallel effect on both expression and binding to the DNA. On the other hand, binding of CbrB to P_{crcZ} is somehow more sensitive, and alteration of any of the three subsites prevented CbrB binding. However, due to the high efficiency in transcriptional activation from the *crcZ* promoter, the effects on transcription of the altered F1 and R1 sequences are only evident under conditions of lowest CbrB activity. Altogether, these results suggest that a clear preferential binding subsite for CbrB cannot be defined but rather, there is an accumulative effect of each one, and their relative contribution depend on the target region.

In addition, the precise interaction of CbrB with the DNA promoter region of *PP2810* was examined by DNase I footprinting analysis. The direct interaction of CbrB with the promoter region revealed some protected areas and also regions of hypersensitivity to DNase I digestion, thus suggesting distortion of the DNA in this area upon CbrB binding (Fig 5). The altered digestion pattern was detected between sites F1, R1 and R2 and resembled the ones of *crcZ* and *crcY* as revealed by the continuous protection between the subsites [7]. However, the lower binding affinity to *PP2810* allowed detection of a very weakly altered pattern in the most upstream subsite and did not allowed binding detection at all in the lower strand of the DNA. Overall, the DNase I digestion arrangement in the region covering positions -210 to -270 of the promoter region indicated an alteration in the topology of the DNA helix upon CbrB binding, and unequivocally showed a direct CbrB binding and consequently regulation of the *PP2810*-13 operon.

CbrB is a monomer in solution

The fact that the CbrB binding site does not contain palindromic sequences suggests that CbrB might not bind as a dimer and, therefore, it should not be a dimer in solution.

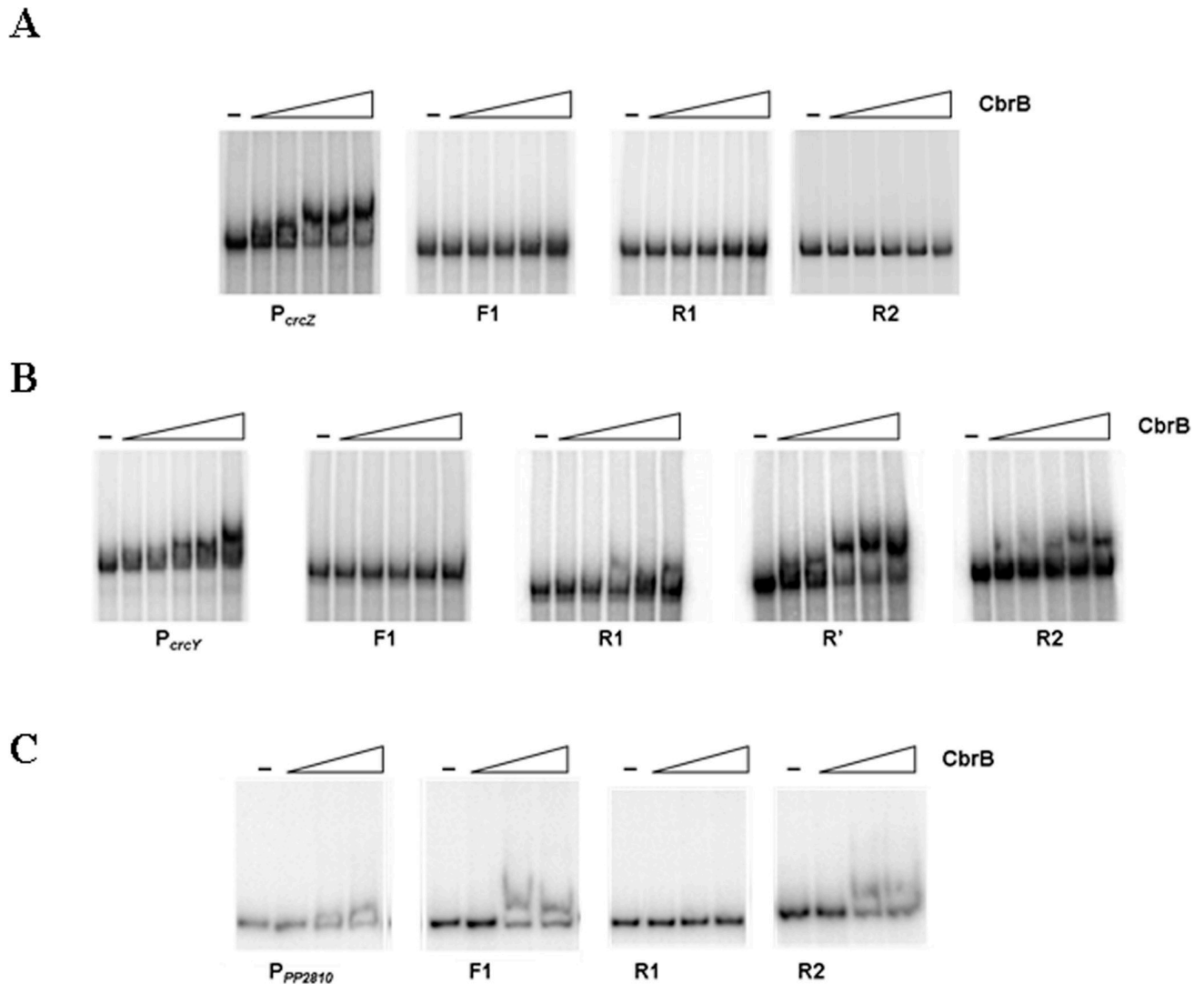


Fig 4. Electrophoretic mobility shift assay (EMSA) for CbrB binding. Band shift observed in linear dsDNA fragments containing the promoter regions of *crcZ* (A), *crcY* (B) and *PP2810* (C) and the substituted versions of F1, R1, (R') or R2 for each promoter, in the presence increasing amounts of CbrB (0, 0.38, 0.75, 1, 1.5 and 2 μ M for *crcZ* and *crcY* promoters and 0, 1, 2 and 2.4 μ M for *PP2810*). A representative assay of three replicas performed is shown.

<https://doi.org/10.1371/journal.pone.0209191.g004>

Ultracentrifugation of CbrB was performed in order to determine the aggregation status of the protein. The analysis of the CbrB sedimentation profile showed a main peak with a sedimentation coefficient to water at 20°C ($s_{20, w}$) of 3.76 S. The slight asymmetry seen to the right of the peak indicates the existence of certain aggregation of the sample (Fig 6A). The molecular mass estimated for the main species is 59.3 KDa, which corresponds to a monomer of CbrB in solution (predicted by sequence to be 53.4 KDa). The molecular weight of the major fraction of CbrB was also coincident with the size expected for a monomer in solution when analysed by molecular exclusion chromatography (Fig 6B, solid line). A very small fraction that could correspond to a dimer was detected, eluting just before the monomer, but had insignificant representation. In addition, a fraction of larger size that eluted at a volume close to 10 ml, which could correspond to higher order complexes of CbrB was also detected. The fraction corresponding to a high molecular weight form was run in a denaturing SDS polyacrylamide gel (Fig 6C, line 1) together with the pure CbrB preparation (Fig 6C, line 2) and showed a

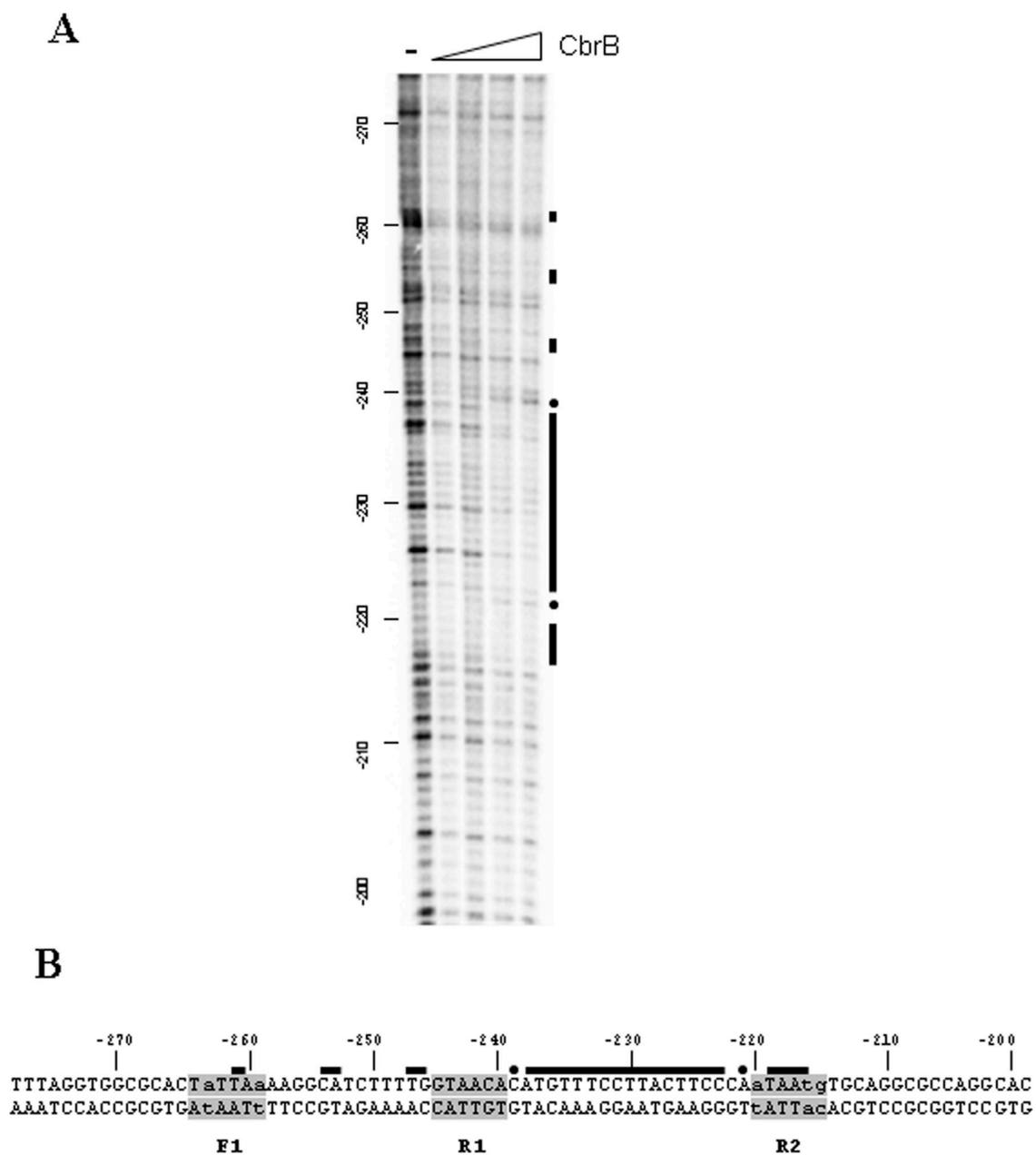


Fig 5. DNase I footprint of CbrB on the PP2810 promoter region. (A) CbrB footprint analysis for a linear fragment containing the promoter region of PP2810 with increasing concentrations of CbrB. CbrB-protected regions to DNase I digestion (black bars), and hypersensitive positions (dots) are marked. The coordinates are relative to the ATG. (B) Schematic representation of the CbrB-protected regions on the sequence of the PP2810 promoter region, with the same references as for the footprint pattern. Shaded boxes on the PP2810 promoter sequence indicate proposed CbrB-binding subsites.

<https://doi.org/10.1371/journal.pone.0209191.g005>

slightly larger size than the monomer of CbrB, so it was analysed by mass spectrometry. The results showed that the fraction corresponded to a bifunctional polymyxin resistance protein ArnA of *Escherichia coli* with a Mascot protein score [22] of 146, thus confirming that the protein apparently co-eluted as a contaminant with the His-tagged CbrB in the Cobalt resin during the purification process, and was discarded to be a multimeric form of CbrB.

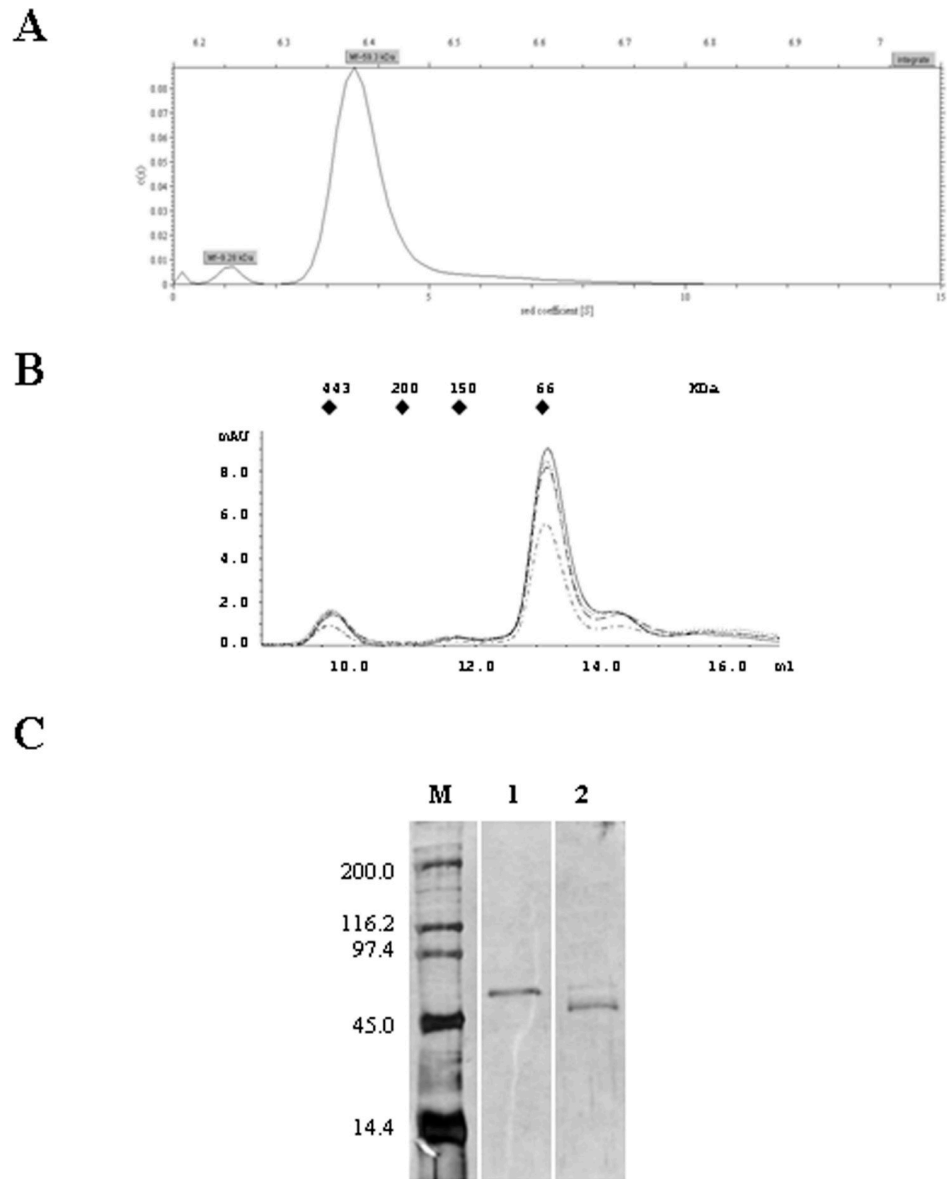


Fig 6. Size-distribution analysis of CbrB. A) Sedimentation velocity ultracentrifugation chromatogram and calculated differential sedimentation coefficients for each form. B) Analytical gel filtration by Molecular Exclusion Chromatography of CbrB. The chromatograms corresponded to 2 μ M CbrB (solid line, —), CbrB treated with acetyl phosphate (dashed and dotted line, -.-.-), incubated in the presence of a 72 pb fragment containing the *crcZ* promoter region (dotted line, . . .) or in the presence of acetyl phosphate and a DNA fragment containing the *crcZ* promoter (dashed line, - - -). The Molecular weight markers are represented as blue triangles at the top of the chromatogram (Apoferritin, 443 KDa, β - Amylase, 200 KDa, alcohol dehydrogenase, 150 KDa and bovine serum albumin, 66 KDa). C) SDS-PAGE acrylamide gel containing the fraction of high molecular weight from Molecular exclusion chromatography of CbrB (line 1), and the pure CbrB preparation (line 2). Molecular weight marker contains Myosin, β -galactosidase, Phosphorylase b, ovoalbumin, lysozyme (200, 116.2, 97.4, 45.0 and 14.4 KDa, respectively). Full-length gel of Fig 6C is presented in S4 Fig.

<https://doi.org/10.1371/journal.pone.0209191.g006>

Since the binding sites in the three identified targets (*crcZ*, *crcY* and *PP2810*) are not palindromic, and CbrB is mainly detected as a monomer in solution, we aimed to determine if in the presence of a DNA containing the CbrB binding sites or the phosphorylation state of CbrB could promote the multimerization of the protein. Addition of a 72 bp DNA fragment

containing the subsites F1, R1 and R2 of the promoter region of *crcZ* to the CbrB sample in the size exclusion chromatography did not change this pattern. Similarly, CbrB treatment with acetyl phosphate in an attempt to phosphorylate it neither changed this pattern (Fig 6B).

Discussion

While the CbrAB two-component system has been widely described in the assimilation of different amino acids as carbon sources [6, 12], how the bacterium senses these signals to activate the system is largely unknown. Expression analysis revealed its implication in many cellular processes and positioned the regulatory system in a high ranked hierarchy of regulation. Also, the fact that CbrB also indirectly controlled Carbon Catabolite Repression mediated by Crc in the Pseudomonads through transcriptional activation of the regulatory RNAs *CrcZ* and *CrcY* [8, 9, 23], made necessary to define the particular targets contacted by CbrB and to discriminate between regulons. CbrB binding to DNA promoter sequences containing σ^N consensus sites was analysed and, for the first time, we show direct activation by CbrB (in addition to *CrcZ* and *CrcY* regulatory RNAs) of new target genes coding for proteins. The fact that an important number of regulatory and signal transduction proteins are among the potential targets for CbrB regulation (20% of the targets were involved in regulatory processes), indicates that the CbrB regulon could be very large. On the other hand, 38% of the CbrB targets were annotated as hypothetical proteins that limited the interpretation of its CbrB-mediated control. One of these targets, operon *PP2810-PP2013*, has structural homology to an RND- type efflux pump that is activated in situations of carbon limitation according to our results. Its promoter arrangement is coherent with the disposition of the CbrB, IHF and σ^N consensus binding sites found in the *crcZ* and *crcY* promoters, and the fact that it is a target of different nature than non-translated regulatory RNAs, led us to use it for its dissection in this work.

We have identified 61 targets from the ChIP-Seq analysis that were selected under very restrictive conditions with the purpose to determine a DNA binding sequence when CbrB acts as transcriptional activator of σ^N -dependent promoters. We are aware that many targets with less recognizable σ^N sites could be overlooked. In this sense, it has been reported that poor σ^N sequences are tightly regulated by Enhancer Binding Proteins (EBPs) when IHF contributes to adopt the appropriate topology for the formation of the initiation complex [16, 24]. On the other hand, the fact that 20% of the targets are involved in regulatory processes, amplifies considerably the regulon in cascade.

Also, some EBPs of this family such as NtrC or FleQ, which usually activate transcription of σ^N promoters have been reported to occasionally act as repressors of the transcription of some genes with σ^{70} promoter sequences [25–27]. This particular scenario has not been evaluated in this work and only fragments peaks containing σ^N -dependent promoters were included. Nevertheless, three of the target genes validated by quantitative RT-PCR resulted to be repressed (*oprD*, *rpoN* and *glgA*). Although sequences for CbrB binding were identified in the DNA fragment obtained from the ChIP-Seq analysis, its disposition with respect to the putative σ^N promoter was incoherent, so our interpretation is that their transcription is not dependent on this sigma factor.

Bioinformatics analysis using MEME or FIMO (MEME suite, NIH) [28] on the promoter regions of the selected peaks did not reveal a defined pattern for CbrB binding, since 6 bp imperfect sequences with 1 to 2 mismatches occur recurrently in random sequences. The application of a more restrictive custom algorithm in the DNA fragments, scanning for at least two of the subsites (F1, R1 or R2) with a proper spacing, and allowing up to 2 mismatches overall, also failed to generate a consensus sequence for CbrB binding.

Also, two of the targets from the analysis resulted to be not CbrB -regulated, although PP3009 even contained a potential CbrB binding site. This might mean that CbrB, as activators having a short recognition sequence such as NifA that recognises a single TGT-N₁₀-ACA site [29], could bind to many more sequences in the genome than those used to activate transcription. As for CbrB, NifA activation is IHF-dependent, and their association to promoter sequences in the right positions causes the appropriate interaction with the RNA polymerase facilitated by IHF, leading to transcription activation. CbrB dependence on IHF might also explain why a number of potential CbrB binding sites could not be optimal at all but still be functional, when in combination with a good promoter sequence and the interplay of IHF facilitating the interaction of the transcription factors and consequent open complex formation.

The lack of a restricted consensus sequence for CbrB binding to make an *in silico* prediction together with the mutational analysis in the CbrB subsites that reveal the different relevance of each one according to the context, suggests that CbrB may bind to the DNA in a relatively relaxed (variable) manner. The participation of IHF may contribute to the contextualization to favor CbrB activation in sites with different affinities.

The multimeric state of CbrB also seems to play an important role in the mechanism of activation. A typical enhancer binding protein contains three domains: an N-terminal regulatory domain, a central AAA+ domain and a C-terminal DNA-binding domain [30]. The N-terminal domain regulates the central AAA domain activity either positively or negatively, often through the control of oligomerisation (reviewed in [18, 31]). EBPs are typically dimeric in their inactive state but in response to stimulatory signals, form higher order oligomers via their AAA+ domain. Hexamerisation is required both for ATPase activity and for interaction with the holoenzyme bound at the promoter and remodelling the closed complex into a transcriptionally competent open complex (reviewed in [18, 32]). Stable hexamers have been observed for PspF, NtrC, NtrC1 and ZraR in the presence of different nucleotides implying that nucleotides play significant roles in oligomerisation (reviewed in [32, 33]). While multiple Upstream Activating Sequences (UAS) are common in σ^N -dependent promoters probably to facilitate oligomerization of contiguously bound dimers, an absolute dependency on more than one target site is unusual, and in some cases, such a NifA, a single palindromic sequence is found in its binding sites. Intriguingly, this is the case of NorR where three inactive NorR dimers bind to three adjacent UAS, resulting in an increased local concentration of NorR thus facilitating oligomerisation upon activation of the regulatory GAF domain [34]. For CbrB, lack of palindromic sites and no perceptible dimerization *in vitro* suggest that it does not bind as a dimer. Rather it appears to initially bind as a monomer to each one of the sites. Although there is no evidence of oligomerisation of CbrB in solution, the formation of structures of higher order is the most rational prediction to stabilise the complex *in vivo*. Each particular binding site has an accumulative effect upon CbrB binding, although neither of the three is essential for transcriptional activation. Actually, one of the subsites is almost dispensable at the *crcY* and *PP2810* promoter regions; only at *crcZ*, where there is a higher conservation of the sites and higher level of expression, a greater participation of each UAS is observed, although there is still a substantial activation after mutating any of the subsites. As shown for *PP2810*, even though the subsites at the promoter region are less conserved, the proper spacing of the UAS is preserved and its expression is tightly regulated (Fig 1B), suggesting that it may be even more relevant than a high conservation of the sequences. Proper spacing of the subsites places them on the same side of the DNA helix, favoring the interaction of CbrB with DNA at the same time as the contacts among CbrB monomers.

The work presented here pictures a landscape on the complexity of the binding recognition mechanism of CbrB to its DNA targets, which include three important elements; CbrB binding

to the DNA contacting at least two non-palindromic subsites of variable spacing and low sequence conservation, the participation of IHF to favor CbrB interaction at certain sites and finally the presence of a σ^N sequence for specific activation. This panorama opens a new door for further research on the novel functions controlled by this regulator.

Materials and methods

Bacterial strains and growth conditions

The bacterial strains, plasmids and oligonucleotides used in this work are summarized in S1 and S2 Tables. Cells were grown in M9 minimal medium[35], containing 20 mM sodium succinate or oxaloacetate as carbon source and ammonium chloride (1 g l^{-1}) as the nitrogen source. Luria–Bertani (LB) was used as a rich medium[36]. Cultures were grown in culture tubes or flasks with shaking (180 r.p.m.) at 30°C and 37°C for *Pseudomonas* or *E. coli* strains, respectively. When required, antibiotics and other additives were used at the following concentrations ($\mu\text{g ml}^{-1}$): ampicillin (Ap) 100; carbenicillin (Cb) 500; kanamycin (Km) 25; rifampicin (Rf) 20 and 5-bromo- 4-chloro-3-indoyl- β -D-galactopyranoside (X-Gal) 25. All reagents were purchased from Sigma-Aldrich.

Plasmid construction

All DNA manipulations were made using standard protocols[36]. Plasmid DNA preparation and DNA purification kits were purchased from Macherey-Nagel, Promega and General Electric Healthcare according to the manufacturers' specifications. In all cloning procedures involving PCR amplification, sequences of the amplified fragments were determined by commercial sequencing (Secugen, Madrid, Spain). *E. coli* DH5 α was used as a host in all cloning procedures. Plasmid DNA was transferred to *E. coli* and *P. putida* strains by transformation [37] or electroporation[38], respectively.

Plasmid pMPO389 was generated by PCR amplification of genomic DNA using the pair of oligonucleotides *crcYSmaI/ crcYBamHI* into a BamHI-SmaI digested pUC18Sfi vector. The transcriptional fusions of *PP2810* promoter region to *lacZ* were constructed by PCR amplification of *P. putida* KT2442 genomic DNA with oligonucleotides PP2810F/PP2810R and PP2810fwmut/PP2810R cloned into the EcoRI- and BamHI-digested vector pMPO234 to give plasmids pMPO420 and pMPO422 respectively. The substitutions of the wild type sequences of F1, R1 and R2 for CbrB binding subsites were generated by PCR extension overlapping fragments as in [39] using *P. putida* KT2442 genomic DNA as the template and the mutagenic oligonucleotides PP2810mutIF/ PP2810mutIR for F1, PP2810mutIIF/ PP2810mutIIR for R1 and PP2810mutIIIF/ PP2810mutIIIR for R2, with the external nonmutagenic oligonucleotides PP2810R and PP2810fwmut. The final PCR products were cloned as EcoRI/BamHI in pMPO234 to yield pMPO425, pMPO426 and pMPO428, respectively.

The transcriptional fusions to *lacZ* containing the substituted F1, R1 and R2 CbrB binding subsites for the promoter regions of *crcZ* were constructed using pMPO1316 as template and the mutagenic oligonucleotides Zmut1F/Zmut1R, Zmut2F/Zmut2R, Zmut3F/Zmut3R, respectively with the external non-mutagenic oligonucleotides ZbisBam/ fuscrcZFEco. The final PCR products were cloned as an EcoRI/BamHI fragment into pMPO234 to yield pMPO436, pMPO437 and pMPO438, respectively. In the case of the promoter region of *crcY*, plasmid pMPO1314 was used as the template and the mutagenic oligonucleotides Ymut1F/ Ymut1R were used to substitute F1, Ymut2F/ Ymut2R for R1, Ymut3F/ Ymut3R for R' and Ymut4F/ Ymut4R for R2 site. The external non-mutagenic oligonucleotides to generate the overlapping mutated fragment were FusioncYRbisBam and *crcYSmaI* for the fragment bearing the mutated F1 and FusioncYRbisBam and FusioncYF for the fragments containing the

mutated R1, R' and R2. After EcoRI/BamHI directed cloning into pMPO234, plasmids pMPO439, pMPO440, pMPO441 and pMPO442 were generated, respectively. Plasmids pMP1342 and pMPO1343 were constructed by PCR amplification of genomic DNA using the pair of oligonucleotides foot2810smaF+/ foot2810XbaR+ and foot2810XbaF-/ foot2810smaR- for the top and bottom strands of the DNA respectively, and the fragments were cloned into a XbaI–SmaI digested pUC18Sfi vector.

β-Galactosidase assays

Steady-state β-galactosidase assays were used to examine the expression of the P_{crcZ} , P_{crcY} and P_{PP2810} transcriptional fusions to *lacZ* and their mutagenized versions in *P. putida* KT2442 and MPO401 under different growth conditions. Preinocula of bacterial strains harbouring the relevant plasmids were grown to saturation in LB and minimal medium with succinate 20 mM as carbon source. Cells were then diluted to 0.05 of A_{600} in LB, to 0.1 of A_{600} in a minimal medium with succinate and to 0.3 of A_{600} in a minimal medium with oxaloacetate and shaken until they reached the mid-exponential phase ($A_{600} = 0.25–0.5$). β-galactosidase activity was determined from SDS- and chloroform-permeabilised cells as previously described [40]. All plasmids in *E. coli* were transferred by conjugation to *P. putida* in the presence of the helper vector pRK2013.

Protein purification and Molecular exclusion chromatography

CbrB was overexpressed and purified as previously described [7]. CbrB Molecular Exclusion chromatography was performed on a Superdex 200 increase 10/300GL column (GE Healthcare) in an ÄKTA FPLC system (GE Healthcare). Chromatography was performed with 500 μ l of 2 μ M CbrB at room temperature in CbrB binding buffer (50 mM Tris HCl pH 7.4, 50 mM KCl, 0.1 mM DTT, 0.1 mM EDTA and 10 mM MgCl₂) with a flow rate of 0.5 ml min⁻¹. CbrB samples were incubated in presence/absence of 4.5 nM 80pb-DNA fragment containing the *crcZ* promoter region and/or 80 mM acetyl phosphate as in [7] where needed prior to loading onto the column. An 80 bp DNA fragment lacking any CbrB binding sites was used as negative control. Apoferritin (443 KDa), β- Amylase (200 KDa), alcohol dehydrogenase (150 KDa) and bovine serum albumin (66 KDa) were used as Molecular Weight markers. The eluted fraction corresponding to a high molecular weight from the molecular exclusion chromatography was analysed by Mass spectrometry at the University Pablo de Olavide Central Services.

Analytical ultracentrifugation

Sedimentation velocity experiments were carried out at 20 °C in an Optima XL-A analytical ultracentrifuge (Beckman Coulter) at Instituto de Química-Física Rocasolano, CSIC, Madrid. Measurements were performed in CbrB binding buffer at 45,000 rpm using a protein concentration of 60 μ M. Differential sedimentation coefficients $c(s)$ were calculated by least squares boundary modelling of sedimentation velocity profiles using the program sedfit [41].

Electrophoretic mobility shift assay (EMSA)

Electrophoretic mobility shift assays of the CbrB-DNA complexes were performed as previously described [7]. DNA probes comprising the CbrB binding sites were obtained as dsDNA fragments by annealing of 72 pb oligonucleotides containing the wild type sequences or substitutions of subsites F1, R1, R' or R2 for P_{crcZ} and P_{crcY} promoter regions (see S2 Table), and by PCR amplification and XbaI/ SmaI restriction of the products for the remaining genes. The probe for PP2810 promoter region and their derivatives containing substitutions of F1, R1 and

R2 CbrB binding subsites were obtained by PCR amplification with oligonucleotides PP2810EMSAXbaIF/ PP2810EMSASmaR using plasmids pMPO420, pMPO425, pMPO426 and pMPO428 as templates, respectively. The promoter regions of PP1206 and PP3420 were obtained by XbaI/SmaI restriction digest of PCR fragments obtained by amplification of genomic DNA with the oligos EMSAoprDF/ EMSAoprDR and EMSA3420HKF/ EMSA3420HKR, respectively. The probes containing the promoter regions of *crcZ* and *crcY* were labelled with [α - 32 P]-dATP and all the other fragments were labelled with [α - 32 P]-dCTP by filling in the 5' overhangs using the Klenow fragment. Reactions were performed in 20 μ l at room temperature in Crc binding buffer (35mM Tris-acetate pH 7.9, 70 mM KAc, 20 mM NH₄Ac, 2 mM Mg₂Ac, 1mM CaCl₂, 1 mM DTT, 5% glycerol) for *crcZ* and *crcY* or CbrB binding buffer (50mM Tris-HCl pH 7.4, 50 mM KCl, 10 mM MgCl₂, 0,1 mM EDTA, 1 mM DTT) for the others reactions. The reactions were performed as in [7] with the DNA probe (5 nM for *crcZ* and *crcY* and 1.5 nM for the remaining promoters), 100 ng μ l⁻¹ salmon sperm DNA, 250 ng μ l⁻¹ BSA and increasing amounts of purified protein CbrB (see Fig legends in Figs 1A and 4) for PP2810, *oprD*, PP3420, *crcZ* and *crcY* promoters.

DNase I footprinting

CbrB DNase I footprinting was performed essentially as described [7]. The DNA fragments were generated by XbaI/SmaI restriction digest of pMPO1342 and pMPO1343 containing the promoter region of PP2810 for the top and bottom strands. The DNA fragments were labelled with [α - 32 P]dCTP by filling in the 5' overhangs using the Klenow fragment. The binding reactions were performed in 20 μ l at room temperature in the same conditions as the EMSA with CbrB at growing concentrations of 0, 1, 2, 4 and 4.9 μ M. A sequencing reaction performed with the Sequenase 2.0 kit (USB) using an oligonucleotide specific for the labelled strand in each case (sec2810cad- and sec2810cad+ for the top and bottom strands of *P*_{PP2810}) and was run with the partially digested DNA used as a size marker.

RNA preparation and Quantitative RT-PCR

P. putida KT2442 or its derivative MPO401 was cultivated in LB or minimal medium with succinate as carbon source. The saturated preinocula were diluted to A₆₀₀ = 0.05 in LB, and 0.1 in a minimal medium with succinate from saturated cultures in the same medium and grown to mid-exponential phase. Since the strains did not grow with OAA as carbon source, the cultures were inoculated at A₆₀₀ = 0,3 and were induced in the medium for 4 h, then collected and frozen at -80°C. RNA extraction was prepared as described [7]. Quantitative reverse transcription (RT)-PCR of the expression of the candidates was performed as described previously [42]. RT of 6 μ g of total RNA was carried out using the High-Capacity cDNA Archive Kit (Applied Biosystems), with random hexamers as primers to generate cDNAs. Target cDNAs (1–25 ng) from the experimental samples were amplified in quadruplicate in separate PCR reactions using 0.3 mM of each primer (*crcZ*49-1Q/ *crcZ*99-2Q for *crcZ*, QflgBF/ QflgBR for PP4391, QPP0952F/ QPP0952R for PP0952, QPP1206F/ QPP1206R for PP1206, QPP3009/ PP3009_for PP3009, QPP3074F/ QPP3074R for PP3074, QPP3420F/ QPP3420R for PP3420, QPP3656F/ QPP3656R for PP3656, QPP4050F/ QPP4050R for PP4050, QPP4486F/ QPP4486R for PP4486 and QPP4643F/ QPP4643R for PP4643) as previously described [7].

Chromatin immunoprecipitation with high-throughput sequencing (ChIP-Seq)

Three biological replicates of 250 ml batch cultures of *P. putida* KT2442 were independently grown up to mid-exponential phase in a minimal medium containing oxaloacetate as carbon

source from pre-culture grown on succinate at 30°C. 1/10 volume of fresh crosslinking solution (50 mM Hepes-KOH, 100 mM NaCl, 1 mM EDTA, 0.5 mM EGTA, 11% formaldehyde) was added and incubated at room temperature for 15 min. The reaction was stopped by the addition of 1/20 volume of 2.5 M glycine, and the cells were swirled briefly and incubated at room temperature for 5 min. Cells were rinsed twice with ice cold PBS, and collected at 2000 rcf for 10 min and frozen at -80°C. The pellet was resuspended in 10 ml of Lysis Buffer (50 mM Hepes-KOH, pH 7.5; 140 mM NaCl; 1 mM EDTA; 1% Triton X-100, 0.1% sodium deoxycholate and 1 mM PMSF), and sonicated with a Bioruptor® UCD-200 (Diagenode) in an ice-water bath in 6 cycles of 30 sec on/off for 15 min, until DNA was sheared up to 200–300 bp fragments. For CbrB-DNA bound immunoprecipitation, 80 mg of CbrB antibodies coupled to Protein A Dynabeads (Invitrogen) in washing buffer (PBS pH 7.4, 0.02% Tween 20) following the manufactures' indications. The complex was incubated overnight at 4°C at a rotatory shaker for specific binding. The antibodies were removed by immobilization of the magnetic beads and after washing twice, the supernatant was removed for antigen elution by denaturation. The extract was resuspended in 40 µL of elution buffer (50 mM TrisHCl pH8, 10 mM EDTA, SDS 1%) and incubated at 65°C for 15 min. Then, the supernatant was incubated for 30 min with RNaseA (50ug/mL) at 37°C and de-proteinised with proteinase K (0.4 mg/mL), incubated for 2 hours at 37°C and further inactivated at 55°C for two hours. DNA was purified with the QIAquick PCR Purification Kit (QIAquick spin kit, QIAGEN), the sample was eluted in 100 µl of mQ H₂O and stored at -20°C.

Sequencing libraries were prepared using the Ion ChIP-Seq library preparation kit for PGM (Thermo Fisher Scientific Inc). Ten ng of IP DNA was used as input. Bi-directional 200 bases sequencing was performed using a PGM Ion-Torrent system in Genomic's Core Facility at Cabimer. Two technical replicates were sequenced and quality was verified by a FastQC analysis (Babraham Bioinformatics). Reads were aligned on *P. putida* KT2440 using TMAP 4.4.23–1 with Torrent Suite (version 4.4.3) from PGM. Data were uploaded to the Galaxy Web platform to use the public server at usegalaxy.org [43] and BAM files were merged together with BAM tools [44] for further analysis. Peak detection was performed using MACS2 (Model-based analysis of ChIP-Seq version 2.0.10) to identify enriched regions in gene promoter regions (Band width of 300bp; P-value <0.01; shift size of 100bp and MFOLD lower limit 10-upper limit 30). Peaks were visualized with Integrative Genomics Viewer (Broad Institute). Sequences were deposited in the database of NCBI with SRA accession number SRP158108.

Supporting information

S1 Fig. Captures of the ChIP-seq raw data in a IGV browser. In cyan the total peaks after peak calling, in green the peaks with a p-value <2, in red the selected DNA fragments after the σ N filtration used for the search of a CbrB binding consensus sequence. Bam files representing the reads are shown below.

(TIF)

S2 Fig. Electrophoretic mobility shift assay (EMSA) for CbrB binding. Linear dsDNA fragments containing the promoter regions of PP4391, PP3074, PP4050 in the presence increasing amounts of CbrB (indicated on top) were used. In parenthesis the coordinates of the DNA fragments used for the EMSA referred to the ATG.

(TIF)

S3 Fig. In vivo expression from the *P. putida* *crcZ* and *crcY* promoters. Expression was measured as β -galactosidase activity of the *crcZ* (A) and *crcY::lacZ* (B) transcriptional fusions (plasmid pMPO1316 and pMPO1314, respectively) of cultures of the KT2442 wild-type and the

MPO401 ($\Delta cbrB$) mutant strains, grown in LB (white bars) or in minimal medium containing succinate (black) or oxaloacetate (grey bars) as carbon sources. The values are the average of at least three independent assays. The error bars indicate the standard deviation of the means. Stars designate p-values for the Student's t-test for unpaired samples not assuming equal variance and are referred to the wild type strain. *: $p < 0.05$; **: $p < 0.01$; ***: $p < 0.005$. (TIF)

S4 Fig. Full-length gel of Fig 6C.

(TIF)

S1 Table. Strains and plasmids used in this study.

(PDF)

S2 Table. Oligonucleotides used in this study.

(PDF)

Acknowledgments

We acknowledge the contribution of Ibai Irastorza-Azcárate and Damien P. Devos for the development of the algorithm for detection of the CbrB-binding sites, and to Antonio Leal and F. Govantes for sharing unpublished results. We are grateful to all members of the Microbiology laboratory for their insights and helpful suggestions, and Guadalupe Martín Cabello for technical help. This work was supported by the Spanish Ministry of Economy, Industry y Competitividad grant BIO2014-57545-R.

Author Contributions

Conceptualization: Sofía M. García-Mauriño, Eduardo Santero, Inés Canosa.

Data curation: Eloísa Andújar, Mónica Pérez-Alegre, Inés Canosa.

Funding acquisition: Inés Canosa.

Investigation: Rocío Barroso, Sofía M. García-Mauriño, Laura Tomás-Gallardo, Eduardo Santero, Inés Canosa.

Methodology: Rocío Barroso, Sofía M. García-Mauriño, Laura Tomás-Gallardo, Eloísa Andújar, Mónica Pérez-Alegre.

Project administration: Eduardo Santero, Inés Canosa.

Supervision: Eduardo Santero, Inés Canosa.

Writing – original draft: Inés Canosa.

Writing – review & editing: Rocío Barroso, Sofía M. García-Mauriño, Laura Tomás-Gallardo, Eloísa Andújar, Mónica Pérez-Alegre, Eduardo Santero, Inés Canosa.

References

1. Groisman EA. Feedback Control of Two-Component Regulatory Systems. *Annu Rev Microbiol.* 2016; 70:103–24. <https://doi.org/10.1146/annurev-micro-102215-095331> PMID: 27607549.
2. Nishijyo T, Haas D, Itoh Y. The CbrA-CbrB two-component regulatory system controls the utilization of multiple carbon and nitrogen sources in *Pseudomonas aeruginosa*. *Mol Microbiol.* 2001; 40(4):917–31. Epub 2001/06/13. mmi2435 [pii]. PMID: 11401699.
3. Zhang XX, Rainey PB. Dual involvement of CbrAB and NtrBC in the regulation of histidine utilization in *Pseudomonas fluorescens* SBW25. *Genetics.* 2008; 178(1):185–95. <https://doi.org/10.1534/genetics.107.081984> PMID: 18202367.

4. Filiatrault MJ, Stodghill PV, Wilson J, Butcher BG, Chen H, Myers CR, et al. CrcZ and CrcX regulate carbon source utilization in *Pseudomonas syringae* pathovar tomato strain DC3000. *RNA Biol.* 2013; 10(2). Epub 2013/01/29. 23019 [pii]. <https://doi.org/10.4161/rna.23019> PMID: 23353577.
5. Quiroz-Rocha E, Bonilla-Badia F, Garcia-Aguilar V, Lopez-Pliego L, Serrano-Roman J, Cocotl-Yanez M, et al. Two-component system CbrA/CbrB controls alginate production in *Azotobacter vinelandii*. *Microbiology.* 2017; 163(7):1105–15. <https://doi.org/10.1099/mic.0.000457> PMID: 28699871.
6. Amador CI, Canosa I, Govantes F, Santero E. Lack of CbrB in *Pseudomonas putida* affects not only amino acids metabolism but also different stress responses and biofilm development. *Environ Microbiol.* 2010; 12(6):1748–61. Epub 2010/06/18. <https://doi.org/10.1111/j.1462-2920.2010.02254.x> PMID: 20553554.
7. Garcia-Maurino SM, Perez-Martinez I, Amador CI, Canosa I, Santero E. Transcriptional activation of the CrcZ and CrcY regulatory RNAs by the CbrB response regulator in *Pseudomonas putida*. *Mol Microbiol.* 2013; 89(1):189–205. Epub 2013/05/23. <https://doi.org/10.1111/mmi.12270> PMID: 23692431.
8. Sonnleitner E, Abdou L, Haas D. Small RNA as global regulator of carbon catabolite repression in *Pseudomonas aeruginosa*. *Proc Natl Acad Sci U S A.* 2009; 106(51):21866–71. <https://doi.org/10.1073/pnas.pnas.0910308106> PMID: 20080802.
9. Moreno R, Fonseca P, Rojo F. Two small RNAs, CrcY and CrcZ, act in concert to sequester the Crc global regulator in *Pseudomonas putida*, modulating catabolite repression. *Mol Microbiol.* 2012; 83(1):24–40. Epub 2011/11/08. <https://doi.org/10.1111/j.1365-2958.2011.07912.x> PMID: 22053874.
10. Moreno R, Rojo F. The target for the *Pseudomonas putida* Crc global regulator in the benzoate degradation pathway is the BenR transcriptional regulator. *J Bacteriol.* 2008; 190(5):1539–45. <https://doi.org/10.1128/JB.01604-07> PMID: 18156252.
11. Valentini M, Garcia-Maurino SM, Perez-Martinez I, Santero E, Canosa I, Lapouge K. Hierarchical management of carbon sources is regulated similarly by the CbrA/B systems in *Pseudomonas aeruginosa* and *Pseudomonas putida*. *Microbiology.* 2014; 160(Pt 10):2243–52. <https://doi.org/10.1099/mic.0.078873-0> PMID: 25031426.
12. Sonnleitner E, Valentini M, Wenner N, Haichar FZ, Haas D, Lapouge K. Novel targets of the CbrAB/Crc carbon catabolite control system revealed by transcript abundance in *Pseudomonas aeruginosa*. *PLoS One.* 2012; 7(10):e44637. Epub 2012/11/02. <https://doi.org/10.1371/journal.pone.0044637> PMID: 23115619; PubMed Central PMCID: PMC3480352.
13. Filiatrault MJ, Stodghill PV, Bronstein PA, Moll S, Lindeberg M, Grills G, et al. Transcriptome analysis of *Pseudomonas syringae* identifies new genes, noncoding RNAs, and antisense activity. *J Bacteriol.* 2010; 192(9):2359–72. Epub 2010/03/02. JB.01445-09 [pii] <https://doi.org/10.1128/JB.01445-09> PMID: 20190049; PubMed Central PMCID: PMC2863471.
14. Quiroz-Rocha E, Moreno R, Hernandez-Ortiz A, Fragoso-Jimenez JC, Muriel-Millan LF, Guzman J, et al. Glucose uptake in *Azotobacter vinelandii* occurs through a GluP transporter that is under the control of the CbrA/CbrB and Hfq-Crc systems. *Sci Rep.* 2017; 7(1):858. <https://doi.org/10.1038/s41598-017-00980-5> PMID: 28404995; PubMed Central PMCID: PMC5429807.
15. Ozen AI, Ussery DW. Defining the *Pseudomonas* genus: where do we draw the line with *Azotobacter*? *Microb Ecol.* 2012; 63(2):239–48. <https://doi.org/10.1007/s00248-011-9914-8> PMID: 21811795; PubMed Central PMCID: PMC3275731.
16. Hoover TR, Santero E, Porter S, Kustu S. The integration host factor stimulates interaction of RNA polymerase with NIFA, the transcriptional activator for nitrogen fixation operons. *Cell.* 1990; 63(1):11–22. PMID: 2208275.
17. Santero E, Hoover TR, North AK, Berger DK, Porter SC, Kustu S. Role of integration host factor in stimulating transcription from the sigma 54-dependent nifH promoter. *J Mol Biol.* 1992; 227(3):602–20. PMID: 1404379.
18. Bush M, Dixon R. The role of bacterial enhancer binding proteins as specialized activators of sigma54-dependent transcription. *Microbiol Mol Biol Rev.* 2012; 76(3):497–529. <https://doi.org/10.1128/MMBR.00006-12> PMID: 22933558; PubMed Central PMCID: PMC3429621.
19. Abdou L, Chou HT, Haas D, Lu CD. Promoter recognition and activation by the global response regulator CbrB in *Pseudomonas aeruginosa*. *J Bacteriol.* 2011; 193(11):2784–92. Epub 2011/04/12. JB.00164-11 [pii] <https://doi.org/10.1128/JB.00164-11> PMID: 21478360; PubMed Central PMCID: PMC3133114.
20. Mao F, Dam P, Chou J, Olman V, Xu Y. DOOR: a database for prokaryotic operons. *Nucleic Acids Res.* 2009; 37(Database issue):D459–63. Epub 2008/11/08. gkn757 [pii] <https://doi.org/10.1093/nar/gkn757> PMID: 18988623; PubMed Central PMCID: PMC2686520.
21. Soding J, Biegert A, Lupas AN. The HHpred interactive server for protein homology detection and structure prediction. *Nucleic Acids Res.* 2005; 33(Web Server issue):W244–8. Epub 2005/06/28. <https://doi.org/10.1093/nar/gki408> PMID: 15980461; PubMed Central PMCID: PMC1160169.

22. Perkins DN, Pappin DJ, Creasy DM, Cottrell JS. Probability-based protein identification by searching sequence databases using mass spectrometry data. *Electrophoresis*. 1999; 20(18):3551–67. [https://doi.org/10.1002/\(SICI\)1522-2683\(19991201\)20:18<3551::AID-ELPS3551>3.0.CO;2-2](https://doi.org/10.1002/(SICI)1522-2683(19991201)20:18<3551::AID-ELPS3551>3.0.CO;2-2) PMID: 10612281.
23. Rojo F. Carbon catabolite repression in *Pseudomonas*: optimizing metabolic versatility and interactions with the environment. *FEMS Microbiol Rev*. 2010; 34(5):658–84. Epub 2010/04/24. FMR218 [pii] <https://doi.org/10.1111/j.1574-6976.2010.00218.x> PMID: 20412307.
24. Hervas AB, Canosa I, Little R, Dixon R, Santero E. NtrC-Dependent Regulatory Network for Nitrogen Assimilation in *Pseudomonas putida*. *J Bacteriol*. 2009; 191(19):6123–35. <https://doi.org/10.1128/JB.00744-09> WOS:000269725800025. PMID: 19648236
25. Baraquet C, Murakami K, Parsek MR, Harwood CS. The FleQ protein from *Pseudomonas aeruginosa* functions as both a repressor and an activator to control gene expression from the *pel* operon promoter in response to c-di-GMP. *Nucleic Acids Res*. 2012; 40(15):7207–18. <https://doi.org/10.1093/nar/gks384> PMID: 22581773; PubMed Central PMCID: PMCPCMC3424551.
26. Alvarez-Morales A, Dixon R, Merrick M. Positive and negative control of the *glnA ntrBC* regulon in *Klebsiella pneumoniae*. *Embo J*. 1984; 3(3):501–7. PMID: 6143663.
27. Hervas AB, Canosa I, Santero E. Regulation of glutamate dehydrogenase expression in *Pseudomonas putida* results from its direct repression by NtrC under nitrogen-limiting conditions. *Mol Microbiol*. 2010; 78(2):305–19. <https://doi.org/10.1111/j.1365-2958.2010.07329.x> WOS:000282876900005. PMID: 20735780
28. Bailey TL, Boden M, Buske FA, Frith M, Grant CE, Clementi L, et al. MEME SUITE: tools for motif discovery and searching. *Nucleic Acids Res*. 2009; 37(Web Server issue):W202–8. <https://doi.org/10.1093/nar/gkp335> PMID: 19458158; PubMed Central PMCID: PMCPCMC2703892.
29. Cannon W, Charlton W, Buck M. Organization and function of binding sites for the transcriptional activator NifA in the *Klebsiella pneumoniae* *nifE* and *nifU* promoters. *J Mol Biol*. 1991; 220(4):915–31. PMID: 1880804.
30. Studholme DJ, Dixon R. Domain architectures of sigma54-dependent transcriptional activators. *J Bacteriol*. 2003; 185(6):1757–67. <https://doi.org/10.1128/JB.185.6.1757-1767.2003> PMID: 12618438; PubMed Central PMCID: PMCPCMC150144.
31. Ghosh T, Bose D, Zhang X. Mechanisms for activating bacterial RNA polymerase. *FEMS Microbiol Rev*. 2010; 34(5):611–27. <https://doi.org/10.1111/j.1574-6976.2010.00239.x> PMID: 20629756.
32. Rappas M, Bose D, Zhang X. Bacterial enhancer-binding proteins: unlocking sigma54-dependent gene transcription. *Curr Opin Struct Biol*. 2007; 17(1):110–6. <https://doi.org/10.1016/j.sbi.2006.11.002> PMID: 17157497.
33. Wyman C, Rombel I, North AK, Bustamante C, Kustu S. Unusual oligomerization required for activity of NtrC, a bacterial enhancer-binding protein. *Science*. 1997; 275(5306):1658–61. PMID: 9054362.
34. Tucker NP, Ghosh T, Bush M, Zhang X, Dixon R. Essential roles of three enhancer sites in sigma54-dependent transcription by the nitric oxide sensing regulatory protein NorR. *Nucleic Acids Res*. 2010; 38(4):1182–94. <https://doi.org/10.1093/nar/gkp1065> PMID: 19955233; PubMed Central PMCID: PMCPCMC2831303.
35. Mandelbaum RT, Wackett LP, Allan DL. Mineralization of the s-triazine ring of atrazine by stable bacterial mixed cultures. *Appl Environ Microbiol*. 1993; 59(6):1695–701. PMID: 8328795.
36. Sambrook J, Fritsch E. F., and Maniatis T. *Molecular cloning: a laboratory manual*. Cold Spring Harbor, N. Y.: Cold Spring Harbor Laboratory Press; 2000.
37. Inoue H, Nojima H, Okayama H. High efficiency transformation of *Escherichia coli* with plasmids. *Gene*. 1990; 96(1):23–8. PMID: 2265755.
38. Choi KH, Kumar A, Schweizer HP. A 10-min method for preparation of highly electrocompetent *Pseudomonas aeruginosa* cells: application for DNA fragment transfer between chromosomes and plasmid transformation. *J Microbiol Methods*. 2006; 64(3):391–7. Epub 2005/07/01. S0167-7012(05)00158-2 [pii] <https://doi.org/10.1016/j.mimet.2005.06.001> PMID: 15987659.
39. Camacho EM, Casadesus J. Regulation of *traJ* transcription in the *Salmonella* virulence plasmid by strand-specific DNA adenine hemimethylation. *Mol Microbiol*. 2005; 57(6):1700–18. <https://doi.org/10.1111/j.1365-2958.2005.04788.x> PMID: 16135235.
40. Miller JH. *A short course in bacterial genetics: a laboratory manual*. Cold Spring harbor, N. Y.: Cold Spring Harbor Laboratory Press; 1992.
41. Schuck P. Size-distribution analysis of macromolecules by sedimentation velocity ultracentrifugation and lamm equation modeling. *Biophys J*. 2000; 78(3):1606–19. [https://doi.org/10.1016/S0006-3495\(00\)76713-0](https://doi.org/10.1016/S0006-3495(00)76713-0) PMID: 10692345; PubMed Central PMCID: PMCPCMC1300758.

42. Yuste L, Hervas AB, Canosa I, Tobes R, Jimenez JI, Nogales J, et al. Growth phase-dependent expression of the *Pseudomonas putida* KT2440 transcriptional machinery analysed with a genome-wide DNA microarray. *Environmental microbiology*. 2006; 8(1):165–77. Epub 2005/12/14. EMI890 [pii] <https://doi.org/10.1111/j.1462-2920.2005.00890.x> PMID: 16343331.
43. Afgan E, Baker D, Batut B, van den Beek M, Bouvier D, Cech M, et al. The Galaxy platform for accessible, reproducible and collaborative biomedical analyses: 2018 update. *Nucleic Acids Res*. 2018; 46(W1):W537–W44. <https://doi.org/10.1093/nar/gky379> PMID: 29790989; PubMed Central PMCID: PMC6030816.
44. Barnett DW, Garrison EK, Quinlan AR, Stromberg MP, Marth GT. BamTools: a C++ API and toolkit for analyzing and managing BAM files. *Bioinformatics*. 2011; 27(12):1691–2. <https://doi.org/10.1093/bioinformatics/btr174> PMID: 21493652; PubMed Central PMCID: PMC3106182.