

Clinicopathologic and prognostic significance of tumor-infiltrating CD8+ T cells in patients with hepatocellular carcinoma

A meta-analysis

Xuezhong Xu, MD^a, Yulin Tan, PhD^a, Yan Qian, MD^b, Wenbo Xue, BD^a, Yibo Wang, MD^a, Jianguo Du, BD^a, Lei Jin, PhD^a, Wei Ding, MD^{a,*}

Abstract

Background: In patients with hepatocellular carcinoma (HCC), the clinicopathologic and prognostic roles of tumor-infiltrating CD8+ T cells for survival are still controversial. A meta-analysis was performed to resolve this issue.

Methods: We identified studies from PubMed, Embase, and the Cochrane Library to evaluate the clinicopathologic and prognostic value of tumor-infiltrating CD8+ T cells in patients with HCC. A meta-analysis was conducted to estimate clinicopathologic characteristics, overall survival (OS), and disease-free survival. The hazard ratio (HR) and 95% confidence interval (CI) were calculated employing fixed-effect or random-effect models depending on the heterogeneity of the included trials.

Results: A total of 3509 patients from 21 observational studies were enrolled. The meta-analysis revealed that high levels of intratumoral CD8+ tumor-infiltrating lymphocytes (TILs) were associated with better OS (OS; HR = 0.676, $P = .001$) and disease-free survival (disease-free survival [DFS]; HR = 0.712, $P = .002$). The pooled analysis also demonstrated high density of infiltration of CD8+ TILs in margin of tumor (MT) was statistically significant associated with better OS (HR = 0.577; $P < .001$). Moreover, the patients with low CD8+ TILs infiltration had negative HBSAg (OR = 1.67, $P = .02$), large tumor size (OR = 1.74, $P < .01$), and later TNM stage (OR = 1.70, $P < .01$).

Conclusions: Our findings suggested that low levels of CD8+ TILs predict large tumor size, later TNM stage and might be a promising prognostic factor of HCC especially for Asian patients. High-quality randomized controlled trials are needed to determine if CD8+ TILs could serve as targets for immunotherapy in hepatocellular carcinoma.

Abbreviations: CI = confidence interval, DFS = disease free survival, HCC = hepatocellular carcinoma, HR = hazard ratio, IT = intratumor, MT = margin of tumor, OS = overall survival, PT = peritumor, TILs = tumor-infiltrating lymphocytes.

Keywords: CD8, clinicopathologic, hepatocellular carcinoma, prognosis

1. Introduction

Hepatocellular carcinoma (HCC) is one of the most common primary malignancies of the liver, representing the third leading

Editor: Muhammed Mubarak.

XX and YT contributed equally to this work.

This study was supported by the Science and Technology Project of Wujin (WS201515).

The study received grants from the Science and Technology Bureau of Changzhou Municipal Wujin District.

The authors declare no conflicts of interest.

^a Department of General Surgery, Wujin Hospital Affiliated to Jiangsu University, Changzhou, Jiangsu Province, ^b Department of Respiration, Changzhou Second People's Hospital Affiliated to Nanjing Medical University, Changzhou, China.

* Correspondence: Wei Ding, Department of General Surgery, Wujin Hospital affiliated to Jiangsu University, Changzhou 213002, Jiangsu Province, China (e-mail: dwdoctor@163.com).

Copyright © 2019 the Author(s). Published by Wolters Kluwer Health, Inc. This is an open access article distributed under the terms of the Creative Commons Attribution-Non Commercial License 4.0 (CCBY-NC), where it is permissible to download, share, remix, transform, and buildup the work provided it is properly cited. The work cannot be used commercially without permission from the journal.

Medicine (2019) 98:2(e13923)

Received: 8 September 2018 / Received in final form: 21 November 2018 /

Accepted: 10 December 2018

<http://dx.doi.org/10.1097/MD.0000000000013923>

cause of global cancer deaths and the incidence is rising.^[1] Current treatments include surgical resection, liver transplantation, trans-arterial chemoembolization, radiofrequency ablation, and Chinese medicinal therapy.^[2] However, the outcome of HCC remains poor due to low radical resection rates and high recurrence rates. Besides early diagnosis, prompt treatment plans identified from the prediction of patients' outcomes also contribute to successful treatment of liver cancer. Therefore, further investigation is needed to discover precise tumor biomarkers with higher sensitivity and specificity in HCC to determine the optimal treatment programs and predict the prognosis of HCC.

Tumor-infiltrating lymphocytes (TILs), including T cells, B cells, and natural killer (NK) cells, are one of the representative components of host antitumor immune responses.^[3] Increased numbers of TILs, particularly activated cytotoxic T lymphocytes (CTLs), are reported to correlate with better survival in some malignant tumors including HCC.^[4,5] CD8+ TILs play an important role in host immune defense against tumor progression. Ramzan et al revealed that patients with high density of CD8+ T cell had better outcome,^[6] but Chew et al reported the opposite results.^[7] Therefore, whether CD8+ TILs have prognostic value in patients with HCC remains controversial.

Although a meta-analysis on prognosis has been conducted, they merely focused on intratumoral CD8+ TILs and the prognostic value of CD8+ TILs in peritumoral regions and tumor margin was ignored.^[8] Moreover, whether CD8+ TILs are

associated with clinicopathologic features in patients with HCC has not been analyzed systematically. For these reasons, we performed this meta-analysis to make a more precise estimation of the clinicopathologic and prognostic value of CD8+ TILs in patients with HCC.

2. Materials and methods

2.1. Literature search

Relevant articles were identified by 2 reviewers via an electronic search of PubMed, EMBASE, and Cochrane using the following keywords: (tumour or tumor or cancer or carcinoma), (hepatic or liver), (prognostic or prognosis or outcome or survival or clinicopathologic), and CD8. And the search time period of the electronic database was from inception to August 20, 2018. Additionally, pertinent studies were searched in reference lists of selected reports and reviews. Unpublished literature was not performed to search. Disagreement on article inclusion between the 2 reviewers was resolved via a third reviewer. A third researcher would determine the final results about the disagreement of the 2 reviewers.

2.2. Inclusion and exclusion criteria

Inclusion criteria for this meta-analysis were as follows:

- (1) studies researching the prognostic effect of TILs or associated TIL subsets in HCC;
- (2) report of TILs or associated TIL subsets in tumor surgical specimens;
- (3) hazard ratio (HR) and 95% confidence interval (CI) could be extracted;
- (4) when the same author or group reported results obtained from the same crowd in more than one paper, the most recent report or the most informative report was selected.

Exclusion criteria for this meta-analysis were as follows:

- (1) letters, reviews, case reports, animal trials, abstracts, and expert opinion were excluded;
- (2) articles in which have no information on overall survival (OS) or disease-free survival (DFS);
- (3) patients who only treated with immunotherapy chemotherapy, radiotherapy, interventional therapy or liver transplantation;
- (4) non-primary tumor, such as metastatic tumor or recurrent tumor. Names of authors or journals of the articles were not considered in excluding or including the articles.

2.3. Statistical analysis

HR and its 95% CI were used to assess the association between TILs and prognosis of HCC. If a direct report of OS and DFS were not available, then extract the survival data from Kaplan-Meier curves by Engauge Digitizer version 4.1 as described previously.^[9] The extraction was performed by 2 independent researchers to decrease error. STATA version 14.0 was performed to merge the results of studies. Statistical heterogeneity between trials was assessed by Chi-square test and was suggested significant when $I^2 > 50\%$ and/or $P < .05$. The fixed-effect model was used when no heterogeneity was detected among studies, while the random-effect model was preferred when variance existed. The cumulative analysis was performed according to publication time. Sensitivity analysis was conducted to assess the

stability and reliability of this review. Egger test was performed to evaluate the publication bias.^[10]

3. Results

3.1. Study selection and characteristics

A total of 1692 articles were initially gathered after duplicate removal. Among them, 27 studies reported the association between CD8+ TILs and clinicopathologic characteristics or prognosis of HCC. After further screening, 6 types of research were excluded (one studying the same crowd, 4 lacking enough useful data and one treating with immunotherapy). Finally, a total of 21 retrospective studies including 3509 patients from America, China, France, Germany, Japan, Netherlands and Singaporean were included in this meta-analysis (Fig. 1).^[6,7,11–29]

The main characteristics of included studies were displayed in Table 1. The prognostic role of TILs in intratumor (IT), margin of tumor (MT), peritumor (PT) were evaluated in 21, 2 and 5 articles, respectively. Sample sizes of included studies ranged from 38 to 411 patients. The details of tumor stage were offered in 14 articles, and the classifications were diverse. Follow-up time was provided in 13 articles. CD8+ TILs were detected by methods of flow cytometry (FC), immunohistochemistry (IHC) and polymerase chain reaction (PCR), respectively. All 21 types of research were considered to be of adequate quality for the meta-analysis according to Newcastle–Ottawa Scale (NOS) assessment (score ≥ 5 points) (Table 1).

3.2. Prognostic effect of CD8+ TILs on survival

A total of 20 articles, including 3102 patients with HCC, researched the association between clinical outcome and the density of CD8+ TILs.^[6,7,11–24,26–29]

Eighteen articles focused on the relationship between OS and the density of CD8+ TILs in IT.^[6,7,12–22,24,26–29] 2 articles focused on the association between OS and the density of CD8+ TILs in MT.^[19,21] 5 articles focused on the association between OS and the density of CD8+ TILs in PT.^[13,14,16,19,23] A random model was used because of a significant heterogeneity ($P < .001$, $I^2 = 69.5\%$), and the result demonstrated patients with high infiltration of CD8+ TILs in IT had better OS (pooled HR = 0.676; 95% CI = 0.540–0.845; $P = .001$). The pooled analysis revealed that high density of infiltration of CD8+ TILs in MT was statistically significant associated with better OS (pooled HR = 0.577; 95% CI = 0.437–0.760; $P < .001$). But, there was no statistical significance between the density of CD8+ TILs in PT and OS ($P = .531$) (Fig. 2).

Ten articles focused on the relationship between DFS and the density of CD8+ TILs in IT.^[11,13–17,21,22,24,26] Only one article focused on the association between DFS and the density of CD8+ TILs in MT.^[21] Three articles focused on the association between DFS and the density of CD8+ TILs in PT.^[13,14,16] The pooled analysis revealed that high density of infiltration of CD8+ TILs in IT was statistically significant associated with better OS (pooled HR = 0.712; 95% CI = 0.574–0.883; $P = .002$). There was no statistical significance between DFS and CD8+ TILs in PT ($P = .160$) (Fig. 3).

3.3. Subgroup analyses of the prognostic effect of CD8+ TILs

Subgroup analysis showed that patients with high infiltration of CD8+ T lymphocytes had better OS in the groups with Asian

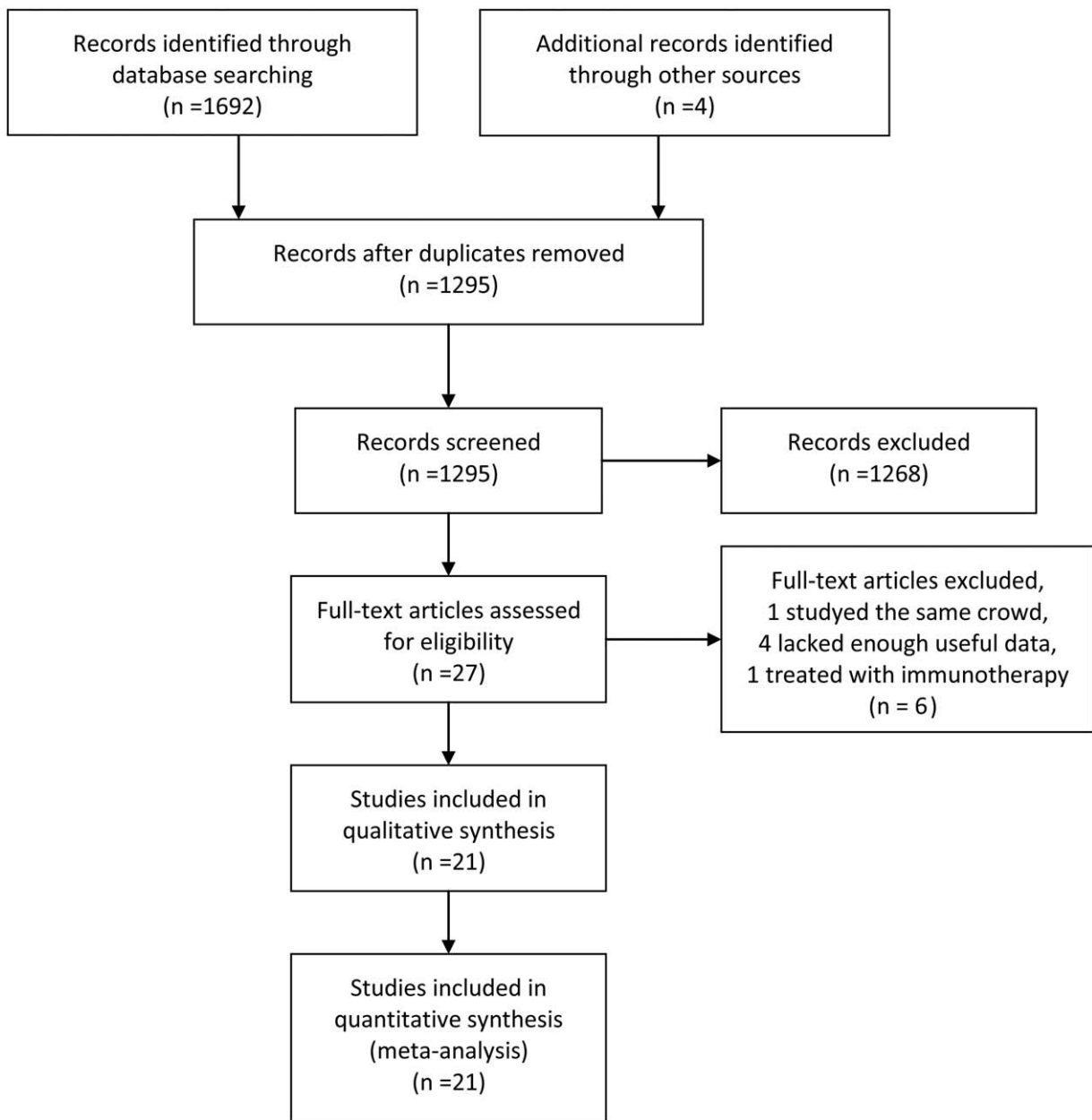


Figure 1. Flow diagram of study selection.

patients (pooled HR=0.669, 95% CI=0.536–0.835; $P < .001$), large sample size (≥ 100 ; pooled HR=0.668, 95% CI=0.537–0.831; $P < .001$), median cutoff values (pooled HR=0.701, 95% CI=0.532–0.925; $P = .012$), and other cutoff values (pooled HR=0.656, 95% CI=0.443–0.971; $P = .035$). Moreover, patients with high infiltration of CD8+ T lymphocytes had better DFS in all subgroups, including ethnicity, sample size and cut-off value (Table 2).

The cumulative meta-analysis indicated that the results of the association between intratumoral CD8+ lymphocytes and OS (Fig. 4A) and DFS (Fig. 4B) got more and more stable and the CI got narrowed since the Sun’s research in 2015.^[21] It is convinced that CD8+ lymphocytes in IT were associated with better prognostic for HCC.

3.4. Relationship between CD8+ TILs and clinicopathologic characteristics

Five studies reported the association between CD8+ TILs and clinicopathologic parameters. A total of 11 features were analyzed, including HBsAg, Tumor size, TNM stage. The information for various clinicopathologic parameters and their correlation with CD8+ TILs is concluded in Table 3. The results of meta-analysis demonstrated that patients with negative HBsAg (pooled OR=1.67, 95% CI=1.08–2.56; $P = .02$), large tumor size (pooled OR=1.74, 95% CI=1.28–2.38; $P < .01$), later TNM stage (pooled OR=1.70, 95% CI=1.21–2.40; $P < .01$) had low CD8+ TILs levels. Besides, the results of meta-analysis demonstrated no correlation between infiltration of CD8+ TILs

Table 1

Main characteristics of all studies included in the meta-analysis.

Study	Country	Location	Case number	Tumor stage	Follow-up (months)	Detected method	Cut-off value	HRs provided from	Outcome	Quality score (NOS)
2004 Ikeguchi	Japan	IT	60	5/17/26/12	49 (2–115)	IHC	median	report	DFS	7
2005 Ikeguchi	Japan	IT	59	6/16/25/12	57 (2–128)	IHC	median	report	OS	5
2007 Gao	China	IT/PT	302	185/52/65/0	58 (2–109)	IHC	median	report	OS/DFS	6
2007 Kobayashi	Japan	IT/PT	147	57/53/37/0	52.8 (0.5–169.1)	IHC	median	report	OS/DFS	6
2009 Pang	China	IT	38	3/12/12/11	NR	NR	median	SC	OS	5
2011 Li	China	IT	281	1103/II-III/94	29 (1.5–83)	IHC	70%	report	OS/DFS	6
2012 Chen	China	IT/PT	141	NR	22.7 (2–70.3)	IHC	median	report	OS/DFS	7
2012 Chew	Singaporean	IT	46, 36	NR	NR	IHC	median	report	OS	6
2013 Lin	China	IT	132	NR	NR	FC	minimum P value	report	OS/DFS	6
2013 Pan	China	IT	163	I100/II-III/63	36 (1–87)	IHC	median	SC	OS	6
2015 Brunner	Germany	IT/MT/PT	119	NR	65 (57–71)	IHC	mean	report	OS	6
2015 Shi	China	IT	147	I-II/90/III-IV/57	NR	IHC	mean	report	OS	6
2015 Sun	China	IT/MT	359	180/27/108/44	NR	IHC	minimum P value	report	OS/DFS	6
2016 Gabrielson	America	IT	65	37/13/14/1	39.7 (9–84)	IHC	median	report	OS/DFS	5
2016 Ramzan	France	IT	63	NR	38.9 (1–130)	IHC	Harrel-C method	SC	OS	6
2016 Wang Q	America	PT	66	NR	38.2 (35.2–58.2)	PCR	median	SC	OS	6
2016 Xie	China	IT	167	I86/II-III/81	NR	IHC	median	report	OS/DFS	6
2017 Huang-Lao	China	IT	407	228/57/122	NR	IHC	median	SC	OS/DFS	6
2017 Huang-Xu	China	IT	411	231/57/123	32	IHC	median	report	OS/DFS	6
2017 Sideras	Netherlands	IT	153	NR	NR	IHC	minimum P value	SC	OS	6
2018 Zhang	China	IT	183	73/60/42	43 (1–80)	IHC	10%	report	OS	6

CI = confidence interval, DFS = disease-free survival, FC = flow cytometry, HR = hazard ratio, IHC = immunohistochemistry, IT = intratumor, MT = margin of tumor, NOS = Newcastle–Ottawa Scale, NR = not report, OS = overall survival, PCR = polymerase chain reaction, PT = peritumor, SC = survival curve.

and age, gender, AFP level, liver cirrhosis, tumor number, tumor grade, tumor encapsulation, and vascular invasion (Table 3).

3.5. Sensitivity analyses and publication bias

Sensitivity analyses showed that the association between CD8+ TILs and prognosis was robust (Fig. 5). Egger test was performed to assess the publication bias of this meta-analysis. As shown in

Figure 5, there was no statistical significance of publication bias in the studies about CD8+ TILs in IT with OS ($P = .653$) (Fig. 6A) or with DFS ($P = .688$) (Fig. 6B).

4. Discussion

A high CD8+ TILs level was associated with better prognosis in both gastric cancer, breast cancer, and colorectal cancer.^[30–32] In

Table 2

Pooled hazard ratios for OS according to subgroup analyses.

OS-Intratumor subgroup	Study number	Case number	HR (95%CI)-model	P value	Heterogeneity	
					I ² (%)	P
CD8+						
OS						
Ethnicity						
Asian	14	2576	0.669 (0.536–0.835) - random	<.001	67.8	<.001
Caucasion	4	400	0.770 (0.264–2.248) - random	.632	80.4	.002
Sample size						
≥100	13	2705	0.668 (0.537–0.831) - random	<.001	79.1	.001
<100	5	271	0.728 (0.297–1.788) - random	.489	67.2	<.001
Cut-off value						
Median	10	1539	0.701 (0.532–0.925) - random	.012	64.8	.002
Others	8	1437	0.656 (0.443–0.971) - random	.035	75.2	<.001
DFS						
Ethnicity						
Asian	9	2000	0.738 (0.598–0.910) - random	.004	54.8	.023
Caucasion	1	65	0.320 (0.129–0.794)	.014	—	—
Sample size						
≥100	8	1940	0.738 (0.593–0.919) - random	.007	60.5	.013
<100	2	125	0.728 (0.297–1.788) - fixed	.024	15.2	.277
Cut-off value						
Median	7	1293	0.828 (0.710–0.966) - fixed	.016	36.8	.148
Others	3	772	0.549 (0.440–0.686) - fixed	<.001	20.7	.283

CI = confidence interval, DFS = disease free survival, HR = hazard ratio, OS = overall survival.

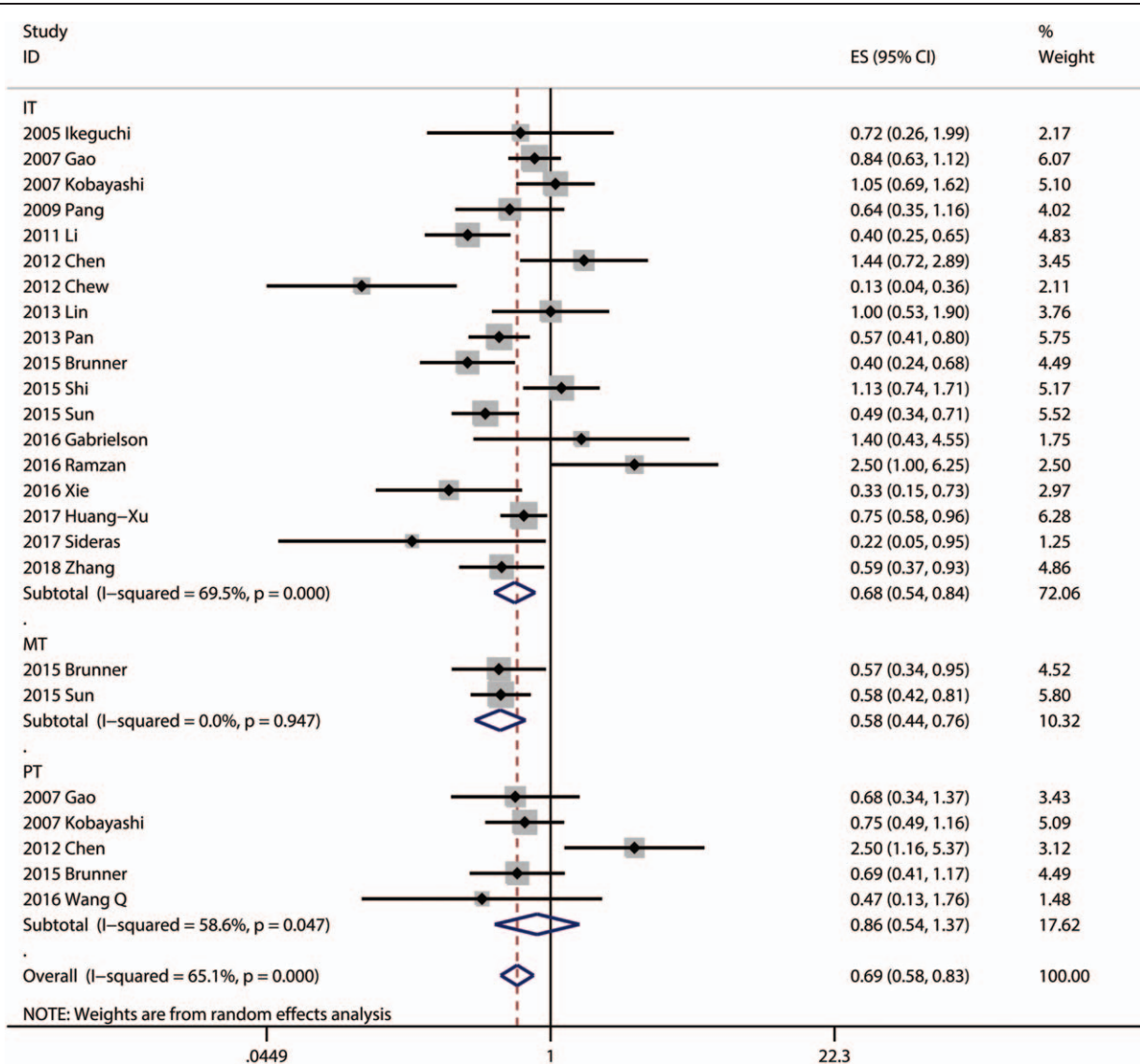


Figure 2. Forest plots of studies evaluating the association between CD8+ lymphocytes and OS of HCC patients. OS=overall survival, HCC=hepatocellular carcinoma.

HCC, most researchers^[7,19,21,24,27] approved that CD8+ TILs were protective factors, but a few researchers^[6,16] insisted that CD8+ TILs were dangerous factors. This study addressed the prognostic value of CD8+ TILs in HCC. We included a larger number of studies in this meta-analysis and drew the same conclusion that a higher CD8+ TILs level was associated with significantly higher OS and DFS in patients with HCC in IT or in MT. By subgroup analysis, we found that Asian patients with high infiltration of CD8+ T lymphocytes were associated with better OS than non-Asian patients, which was considered to be related to the epidemiological features that Hepatitis B remains the primary cause of HCC in Asia. However, there was controversy over whether high CD8+ lymphocytes level in other sites, such as peripheral blood and peritumoral regions has the same effect on prognosis. We found that CD8+ lymphocytes in peritumoral regions have no significant association with prognosis. Overall, a higher level of CD8+ lymphocytes in IT and MT might improve survival and reduce recurrence of HCC, and may be a promising therapeutic strategy for HCC.

Tumor-infiltrating CD8+ lymphocytes were believed to be front fighters against cancers and play a positive prognostic effect in some cancers.^[33] Generally, most malignant cells express antigens that can be recognized by host CD8+ T-lymphocytes, which trigger antitumor immune responses.^[34] Present researches considered that these tumor-associated antigens (TAA)-specific CD8+ T-cells responses positively influence survival in HCC.^[35] The TAA-specific cytotoxic CD8 T-lymphocytes are the key factors in antitumor immune response. In early-stage colorectal cancer, the presence of activated CD8+ T cells both in IT and in PT has been shown to have significant positive prognostic import.^[36] The mechanisms discussed above may lead to the association between CD8+ TILs and prognosis in HCC.

We also explored the relationship between clinicopathologic characteristics of HCC patients and CD8+ lymphocytes. Our study including some eligible studies showed that lower CD8+ TILs level was associated with some clinicopathologic parameters, such as negative HBsAg, large tumor size, and later TNM stage. This conclusion further supported the meta-analysis results

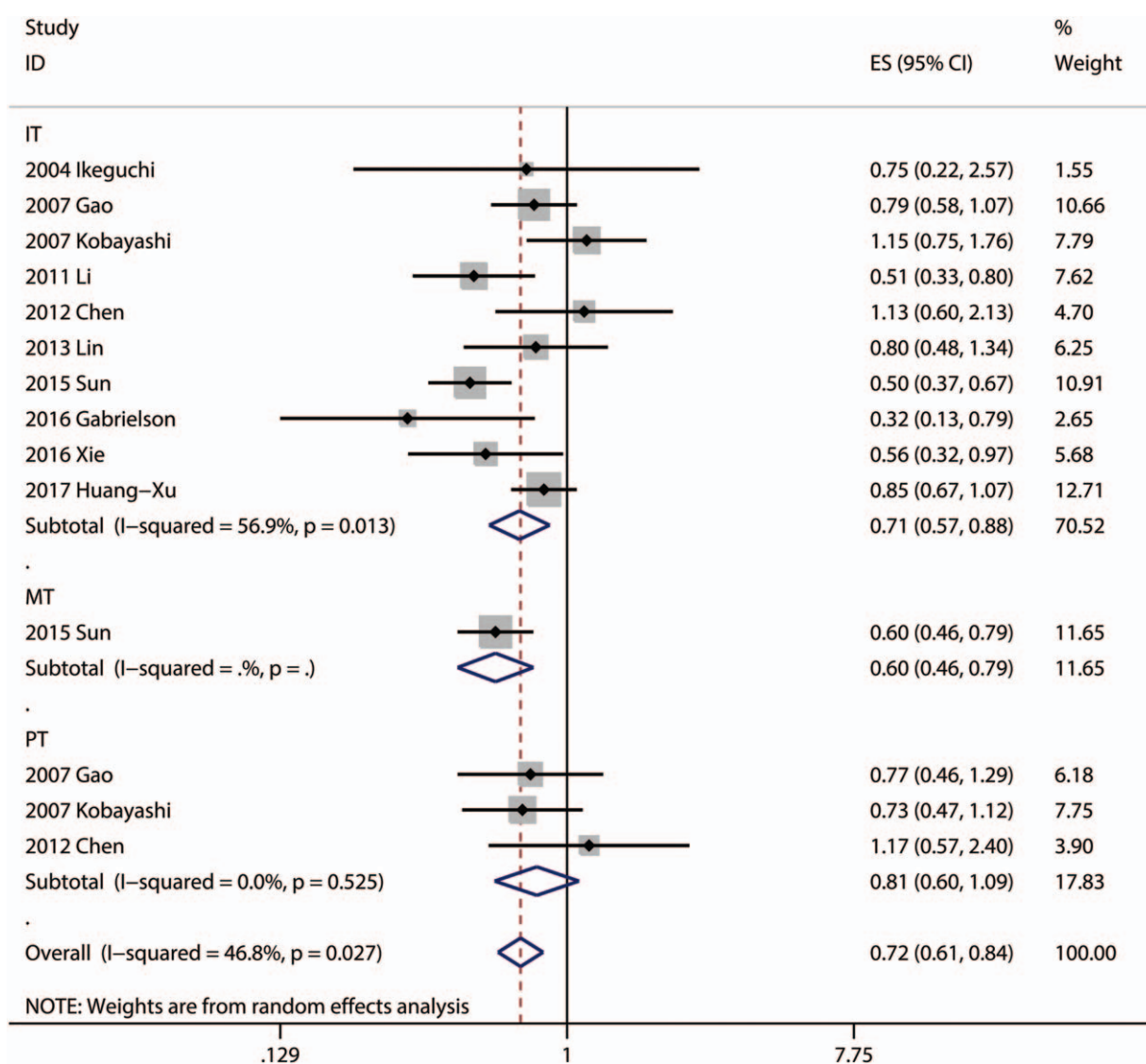


Figure 3. Forest plots of studies evaluating the association between CD8+ lymphocytes and DFS of HCC patients. DFS=disease free survival, HCC= hepatocellular carcinoma.

Table 3

Meta-analysis of reported clinicopathologic characteristics in the included studies.

Parameters	Number of studies	Test for association			Test for heterogeneity	
		OR	95% CI	P	I ²	P
Age (≤50 vs >50)	3	1.06	0.80–1.42	.68	0%	.84
Gender (Male vs Female)	4	0.88	0.62–1.23	.45	16%	.31
HBsAg (Positive vs Negative)	4	1.67	1.08–2.56	.02	0%	.85
AFP level (≤400 vs >400ng/mL)	3	0.80	0.60–1.07	.14	0%	.74
Liver cirrhosis (Yes vs No)	3	0.99	0.21–1.05	.97	64%	.06
Tumor size (≤5cm vs >5cm)	3	1.74	1.28–2.38	<.01	0%	.47
Tumor number (Single vs Multiple)	3	1.44	0.76–2.72	.27	75%	.02
Tumor grade (I+II vs III+IV)	5	0.89	0.67–1.19	.43	29%	.23
TNM stage (I+II vs III+IV)	4	1.70	1.21–2.40	<.01	0%	.61
Tumor encapsulation (Yes vs No)	3	1.08	0.81–1.43	.61	35%	.21
Vascular invasion (Yes vs No)	4	0.82	0.57–1.19	.30	18%	.30

AFP=alpha fetoprotein, HBsAg=Hepatitis B surface antigen.

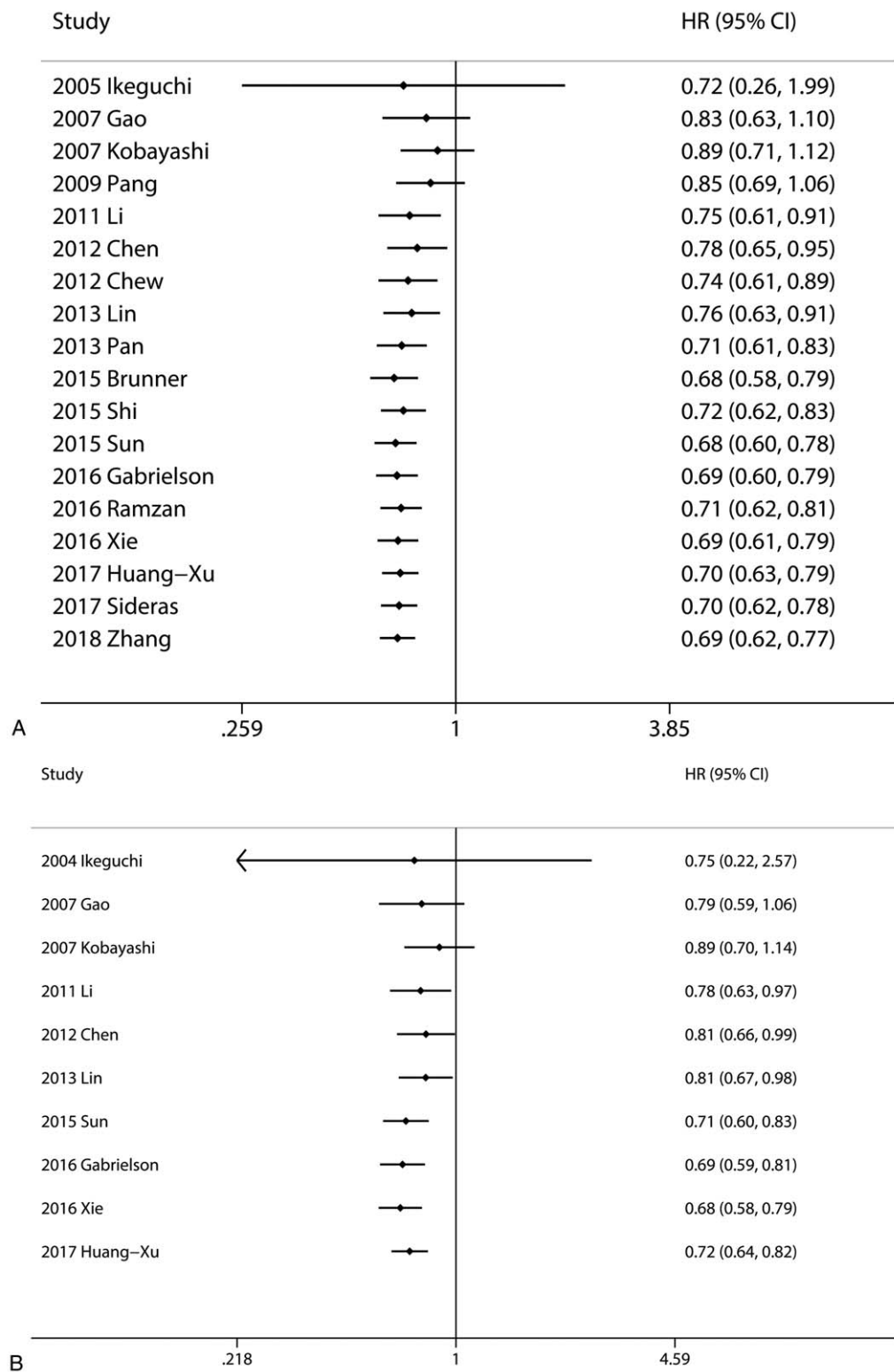


Figure 4. Cumulative meta-analysis of the association between CD8+ TILs and prognosis. (A) Intratumoral CD8+ lymphocytes and OS; (B) Intratumoral CD8+ lymphocytes and DFS. DFS=disease free survival, OS=overall survival, TILs=tumor-infiltrating lymphocytes.

on OS and DFS because patients with large tumor size and later TNM stage have poor prognosis. But Sohn et al^[37] reported that the HBV DNA levels and HBsAg levels were associated with recurrence after curative resection in HBV-related HCC. It is contradictory with our result. Further researches were needed to

prove the relationship between CD8+ lymphocytes in HCC and HBSAg. According to Chen’s study,^[16] lower CD8+ TILs level was associated with multiple tumors. However, our present meta-analysis demonstrated no association between CD8+ TILs and tumor number. As for AFP level, tumor grade, vascular invasion,

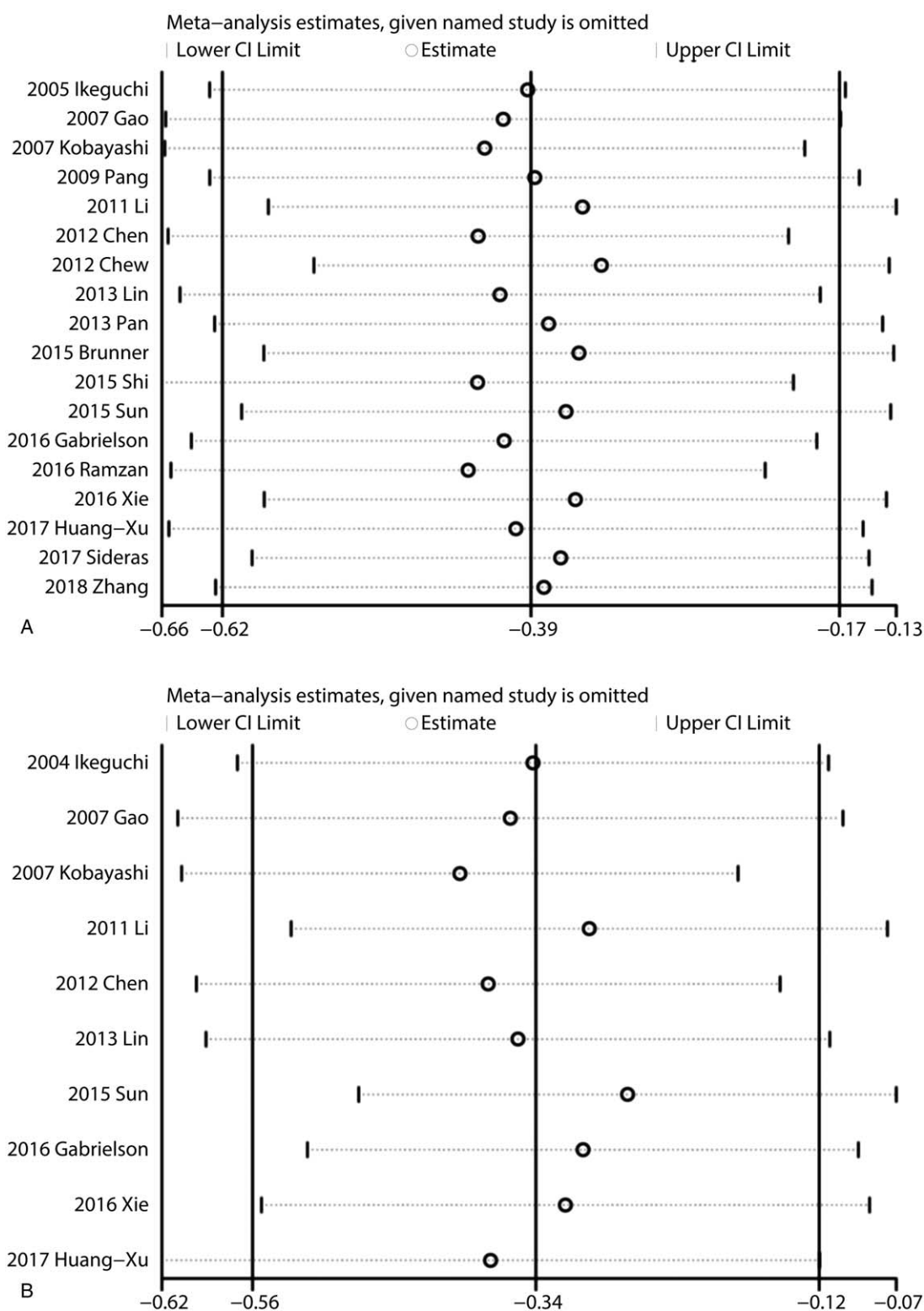


Figure 5. Sensitivity analyses of the association between CD8+ TILs and prognosis. (A) Sensitivity analysis of the association between CD8+ lymphocytes in IT and OS; (B) Sensitivity analysis of the association between CD8+ lymphocytes in IT and DFS. DFS = disease free survival, IT = intratumor, OS = overall survival, TILs = tumor-infiltrating lymphocytes.

and tumor encapsulation, more studies need to be included in the review.

There are several limitations which should be taken into consideration in interpreting the conclusions of this study. First, studies included used different cut-off values that could reduce

the accuracy of CD8+ TILs in the process of estimating prognosis. Second, when several HRs could not be directly acquired in the original article, we obtained them by calculating the data extracted from the survival curves (SCs). Third, some data comes from univariate analysis, which may overestimate the effect sizes

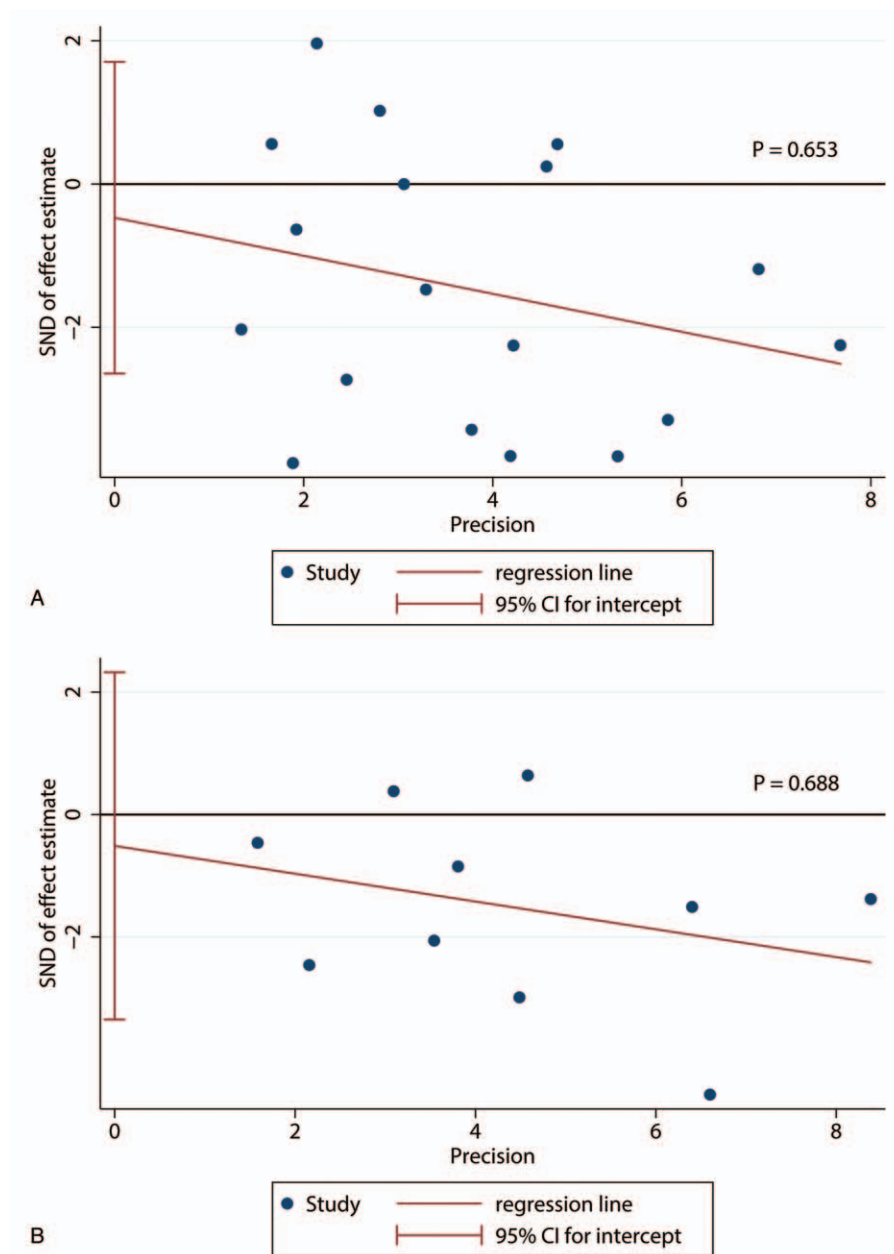


Figure 6. Egger's tests of the association between CD8+ TILs and prognosis. (A) Egger's tests of the association between CD8+ lymphocytes in IT and OS; (B) Egger's tests of the association between CD8+ lymphocytes in IT and DFS. DFS = disease free survival, IT = intratumor, OS = overall survival, TILs = tumor-infiltrating lymphocytes.

of some TIL subsets compared to multivariate analysis. Fourth, there are many reasons for potential heterogeneity. CD8 markers, follow-up time, and cut-off value were defined differently among studies. However, we tried to reduce the impact of heterogeneity through subgroup analyses. Fifth, the number of included studies reporting CD8+ TILs and clinicopathologic characteristics was relatively small. Finally, no prospective randomized trials are reported; therefore, future research should be directed at performing prospective randomized trials.

Despite the limitations of our study, our meta-analysis is meaningful for demonstrating the correlation between CD8+ TILs and prognosis, especially CD8+ TILs in intratumoral regions. Besides, this is the first comprehensive analysis of the association between CD8+ TILs and clinicopathologic character-

istics in HCC patients. And sensitivity analyses revealed that the results were robust.

5. Conclusions

In conclusion, our meta-analysis provides strong evidence that high density of CD8+ TILs in IT was associated with better OS and DFS especially for Asian patients, and CD8+ TILs would serve as an effective marker for evaluating the prognosis of patients with HCC. Patients with lower CD8+ TILs level tended to have large tumor size and later TNM stage. Nevertheless, further well designed clinical studies are needed to elucidate the exact relationship and the underlying mechanism and more non-Asian studies were needed to be enrolled to decrease heterogeneity.

Acknowledgments

We thank all our colleagues at the Department of General Surgery, Wujin Hospital, affiliated with Jiangsu University.

Author contributions

Tan YL and Xu XZ contributed equally to the work as co-first authors; Ding W and Tan YL designed the study and wrote the manuscript; Ding W and Xu XZ designed the research; Qan Y, Xue WB and Wang YB performed the research and analyzed the data; Du JG and Jin L contributed analytical tools; and Ding W designed the study and edited the manuscript as the corresponding author.

Conceptualization: Xuezhong Xu, Yulin Tan, Wei Ding.

Data curation: Yan Qian, Wenbo Xue, Yibo Wang, Jianguo Du, Lei Jin.

Writing – original draft: Yulin Tan, Wei Ding.

Writing – review & editing: Wei Ding.

Wei Ding orcid: 0000-0001-6990-8621.

References

- [1] Siegel RL, Miller KD, Jemal A. Cancer statistics, 2015. *CA: Cancer J Clin* 2015;65:5–29.
- [2] Rasool M, Rashid S, Arooj M, et al. New possibilities in hepatocellular carcinoma treatment. *Anticancer Res* 2014;34:1563–71.
- [3] Hiraoka N. Tumor-infiltrating lymphocytes and hepatocellular carcinoma: molecular biology. *Int J Clin Oncol* 2010;15:544–51.
- [4] Fu J, Zhang Z, Zhou L, et al. Impairment of CD4+ cytotoxic T cells predicts poor survival and high recurrence rates in patients with hepatocellular carcinoma. *Hepatology* 2013;58:139–49.
- [5] Wada Y, Nakashima O, Kutami R, et al. Clinicopathological study on hepatocellular carcinoma with lymphocytic infiltration. *Hepatology* 1998;27:407–14.
- [6] Ramzan M, Sturm N, Decaens T, et al. Liver-infiltrating CD8(+) lymphocytes as prognostic factor for tumour recurrence in hepatitis C virus-related hepatocellular carcinoma. *Liver Int Off J Int Assoc Study Liver* 2016;36:434–44.
- [7] Chew V, Chen J, Lee D, et al. Chemokine-driven lymphocyte infiltration: an early intratumoural event determining long-term survival in resectable hepatocellular carcinoma. *Gut* 2012;61:427–38.
- [8] Yao W, He JC, Yang Y, et al. The prognostic value of tumor-infiltrating lymphocytes in hepatocellular carcinoma: a systematic review and meta-analysis. *Sci Rep* 2017;7: 7525. doi: 10.1038/s41598-017-08128-1.
- [9] Tierney JF, Stewart LA, Ghersi D, et al. Practical methods for incorporating summary time-to-event data into meta-analysis. *Trials* 2007;8:16.
- [10] Galon J, Pages F, Marincola FM, et al. Cancer classification using the immunoscore: a worldwide task force. *J Transl Med* 2012;10: 205. doi: 10.1186/1479-5876-10-205.
- [11] Ikeguchi M, Oi K, Hirooka Y, et al. CD8+ lymphocyte infiltration and apoptosis in hepatocellular carcinoma. *Eur J Surg Oncol J Eur Soc Surg Oncol Br Assoc Surg Oncol* 2004;30:53–7.
- [12] Ikeguchi M, Hirooka Y. Interleukin-2 gene expression is a new biological prognostic marker in hepatocellular carcinomas. *Onkologie* 2005;28: 255–9.
- [13] Gao Q, Qiu SJ, Fan J, et al. Intratumoral balance of regulatory and cytotoxic T cells is associated with prognosis of hepatocellular carcinoma after resection. *J Clin Oncol Off J Am Soc Clin Oncol* 2007;25:2586–93.
- [14] Kobayashi N, Hiraoka N, Yamagami W, et al. FOXP3+ regulatory T cells affect the development and progression of hepatocarcinogenesis. *Clin Cancer Res Off J Am Assoc Cancer Res* 2007;13:902–11.
- [15] Li YW, Qiu SJ, Fan J, et al. Intratumoral neutrophils: a poor prognostic factor for hepatocellular carcinoma following resection. *J Hepatol* 2011;54:497–505.
- [16] Chen KJ, Zhou L, Xie HY, et al. Intratumoral regulatory T cells alone or in combination with cytotoxic T cells predict prognosis of hepatocellular carcinoma after resection. *Med Oncol (Northwood, Lond, Engl)* 2012;29:1817–26.
- [17] Lin SZ, Chen KJ, Xu ZY, et al. Prediction of recurrence and survival in hepatocellular carcinoma based on two cox models mainly determined by FoxP3+ regulatory T cells. *Cancer Prevent Res* 2013;6:594–602.
- [18] Pan QZ, Pan K, Zhao JJ, et al. Decreased expression of interleukin-36 α correlates with poor prognosis in hepatocellular carcinoma. *Cancer Immunol Immunother* 2013;62:1675–85.
- [19] Brunner SM, Rubner C, Kesselring R, et al. Tumor-infiltrating, interleukin-33-producing effector-memory CD8(+) T cells in resected hepatocellular carcinoma prolong patient survival. *Hepatology* 2015;61: 1957–67.
- [20] Shi J, Dong Q, Qin L, et al. Phenotype and distribution of infiltrating lymphocytes in liver cancer tissues. *Chin J Clin Oncol* 2015;42:559–63.
- [21] Sun C, Xu J, Song J, et al. The predictive value of centre tumour CD8(+) T cells in patients with hepatocellular carcinoma: comparison with Immunoscore. *Oncotarget* 2015;6:35602–15.
- [22] Gabrielson A, Wu Y, Wang H, et al. Intratumoral CD3 and CD8 T-cell densities associated with relapse-free survival in HCC. *Cancer Immunol Res* 2016;4:419–30.
- [23] Wang Q, Luan W, Warren L, et al. Prognostic role of immune cells in hepatitis b-associated hepatocellular carcinoma following surgical resection depends on their localization and tumor size. *J Immunother (Hagerstown, Md: 1997)* 2016;39:36–44.
- [24] Xie QK, Zhao YJ, Pan T, et al. Programmed death ligand 1 as an indicator of pre-existing adaptive immune responses in human hepatocellular carcinoma. *Oncoimmunology* 2016;5: e1181252. doi: 10.1080/2162402X.2016.1181252.
- [25] Huang CY, Wang H, Liao W, et al. Transforming growth factor (is a poor prognostic factor and inhibits the favorable prognostic value of CD8+ CTL in human hepatocellular carcinoma. *J Immunother* 2017;40:175–86.
- [26] Huang CY, Wang Y, Luo GY, et al. Relationship between PD-L1 expression and CD8+ T-cell immune responses in hepatocellular carcinoma. *J Immunother (Hagerstown, Md: 1997)* 2017;40:323–33.
- [27] Sideras K, Biermann K, Verheij J, et al. PD-L1, Galectin-9 and CD8+ tumor-infiltrating lymphocytes are associated with survival in hepatocellular carcinoma. *Oncoimmunology* 2017;6: e1273309. doi: 10.1080/2162402X.2016.1273309.
- [28] Chang B, Shen L, Wang K, et al. High number of PD-1 positive intratumoural lymphocytes predicts survival benefit of cytokine-induced killer cells for hepatocellular carcinoma patients. *Liver Int* 2018;38:1449–58.
- [29] Zhang M, Pang HJ, Zhao W, et al. VISTA expression associated with CD8 confers a favorable immune microenvironment and better overall survival in hepatocellular carcinoma. *BMC Cancer* 2018;18: 511. doi: 10.1186/s12885-018-4435-1.
- [30] Zheng X, Song X, Shao Y, et al. Prognostic role of tumor-infiltrating lymphocytes in gastric cancer: a meta-analysis. *Oncotarget* 2017;8: 57386–98.
- [31] Huang Y, Ma C, Zhang Q, et al. CD4+ and CD8+ T cells have opposing roles in breast cancer progression and outcome. *Oncotarget* 2015;6:17462–78.
- [32] Mei Z, Liu Y, Liu C, et al. Tumour-infiltrating inflammation and prognosis in colorectal cancer: systematic review and meta-analysis. *Br J Cancer* 2014;110:1595–605.
- [33] Yuan CH, Sun XM, Zhu CL, et al. Amphiregulin activates regulatory T lymphocytes and suppresses CD8+ T cell-mediated anti-tumor response in hepatocellular carcinoma cells. *Oncotarget* 2015;6:32138–53.
- [34] Gajewski TF, Schreiber H, Fu YX. Innate and adaptive immune cells in the tumor microenvironment. *Nat Immunol* 2013;14:1014–22.
- [35] Gajewski TF, Fuertes MB, Woo SR. Innate immune sensing of cancer: clues from an identified role for type I IFNs. *Cancer Immunol Immunother* 2012;61:1343–7.
- [36] Galon J, Costes A, Sanchez-Cabo F, et al. Type, density, and location of immune cells within human colorectal tumors predict clinical outcome. *Science (New York, N Y)* 2006;313:1960–4.
- [37] Sohn W, Paik YH, Kim JM, et al. HBV DNA and HBsAg levels as risk predictors of early and late recurrence after curative resection of HBV-related hepatocellular carcinoma. *Ann Surg Oncol* 2014;21:2429–35.