

ORIGINAL ARTICLE

Discrimination of vertebral fragility fracture with lumbar spine bone mineral density measured by quantitative computed tomography

Yi-Fan Mao ^{a,☆}, Yong Zhang ^{b,☆}, Kai Li ^b, Ling Wang ^b,
Yi-Min Ma ^b, Wei-Lin Xiao ^a, Wen-Liang Chen ^a, Jia-Feng Zhang ^a,
Qiang Yuan ^c, Nicole Le ^d, Xiao-Lin Shi ^{e,**}, Ai-Hong Yu ^b,
Zhenming Hu ^f, Jie Hao ^g, Xiao-Guang Cheng ^{b,*}

^a The Second Clinical Medical College, Zhejiang Chinese Medical University, Hangzhou, Zhejiang, China

^b Department of Radiology, Beijing Jishuitan Hospital, Beijing, China

^c Department of Spine Surgery, Beijing Jishuitan Hospital, Beijing, China

^d Department of Radiology, University of California, San Diego, United States

^e Department of Osteology, The Second Affiliated Hospital of Zhejiang Chinese Medical University, Hangzhou, Zhejiang, China

^f Spine Surgery Center, The First Affiliated Hospital of Chongqing Medical University, Chongqing, China

^g Department of Orthopedics, The First Affiliated Hospital of Chongqing Medical University, Chongqing, China

Received 16 May 2018; received in revised form 21 August 2018; accepted 30 August 2018

Available online 10 October 2018

KEYWORDS

Bone mineral density;
Quantitative
computed
tomography;
Vertebral fragility
fracture

Abstract *Background/Objective:* This study is a case–control study to explore risk and protective factors, including clinical data and bone mineral density (BMD), affecting vertebral body fragility fracture in elderly men and postmenopausal women. In addition, we investigate the effectiveness of lumbar spine BMD by quantitative computed tomography (QCT) in discriminating vertebral fragility fracture.

Methods: In this case–control study, 52 males and 198 females with vertebral fragility fracture were compared with sex- and age-matched healthy controls to analyse the risk factors that may affect vertebral fragility fracture. The L1–L3 vertebral BMDs were measured by QCT. The difference in risk factors between fracture cases and controls were analysed using student *t* test and Mann–Whitney U test. The correlation between BMD, age, height and weight

* Corresponding author. Department of Radiology, Beijing Jishuitan Hospital, #31, Xijiekoudongjie, Xichengqu, Beijing 100035, China.

** Corresponding author. Department of Orthopedics and Traumatology, The Second Affiliated Hospital of Zhejiang, Chinese Medical University, Zhejiang 310005, China.

E-mail addresses: xlshi-2002@163.com (X.-L. Shi), xiao65@263.net (X.-G. Cheng).

☆ Both contribute equally.

were analysed using univariate analysis. Multiple logistic regression analysis was used to study statistically significant indexes. The receiver operating characteristic curve was used to calculate the cut-off values for positive and negative predictive values of BMD for vertebral fracture discrimination.

Results: In males, body weight and BMD were significantly different between the fracture group and the control group, whereas BMD was only weakly correlated with age ($r = -0.234$). In females, only BMD was significantly different between the fracture and control groups. BMD was weakly correlated with height ($r = 0.133$) and weight ($r = 0.120$) and was moderately correlated with age ($r = -0.387$). There was no correlation between BMD and the remaining variables in this study. In both men and women, the BMD ($p = 0.000$) was the independent protective factor against vertebral fracture. The cut-off values of vertebral BMD for fractures were 64.16 mg/cm^3 for males and 55.58 mg/cm^3 for females. QCT-measured BMD has a high positive predictive value and negative predictive value for discriminating vertebral fragility fracture across a range of BMD values.

Conclusion: This study suggests that BMD is closely related to vertebral fragility fracture and that QCT is an effective technique to accurately discriminate vertebral fragility fracture.

The translational potential of this article: The spine BMD measured by QCT is closely related to fracture, which may allow clinicians to more accurately discriminate which individuals are likely to experience vertebral fragility fracture.

© 2018 The Authors. Published by Elsevier (Singapore) Pte Ltd on behalf of Chinese Speaking Orthopaedic Society. This is an open access article under the CC BY-NC-ND license (<http://creativecommons.org/licenses/by-nc-nd/4.0/>).

Introduction

Osteoporosis is characterized by a decrease in bone strength and an increased risk of fracture. Epidemiological study found that osteoporosis was present in 15.7% of the elderly population in China [1]. Osteoporotic fractures, also known as fragility fractures, develop in the final stages of osteoporosis and are serious medical consequences that result in morbidity, high mortality caused by disability and high medical costs [2,3]. In postmenopausal women, the risk of osteoporotic fracture is 40%, far higher than that of breast, endometrial and ovarian cancer combined [1]. Osteoporotic fractures of the spine are the most likely to occur among the common fracture sites. Women with osteoporotic vertebral body fractures are four times more likely to refracture than those without vertebral fractures. Men with a history of vertebral fragility fractures are also at higher risk of refracture [2,4]. These vertebral fragility fractures are a strong risk factor for other fractures in the future. Some studies have shown that patients with vertebral body fractures experience loss of body function, back pain and height loss, as well as difficulties in social interaction [5]. Other research studies have shown that osteoporotic fracture of vertebral body can reduce life expectancy in patients and may worsen the mortality and permanent disability rates of long-term bedridden patients [6].

Despite the prevalence of vertebral fractures, only a small number of people with fractures are found early, especially with atraumatic fractures, the aetiology of which is still relatively unknown, and vertebral fractures are often delayed in treatment compared with limb bone fractures. In a European study, more than one-eighth of the 15,570 individuals, aged between 50 and 79 years, without a history of fractures had vertebral deformation [7]. In developing countries, atraumatic vertebral fractures due to osteoporosis are more likely to be ignored, and osteoporosis

is perceived as a disease that occurs only in developed countries and is the inevitable result of ageing, which is neither treatable nor preventable. At the same time, there is not enough attention to bone health. However, the atraumatic fracture of vertebral body can have a greater impact on the quality of life of the elderly, so its prevention and treatment should be paid more attention.

In general, vertebral fracture occurs when external force acts on the vertebral body and exceeds its load. In atraumatic vertebral fracture, decreased bone strength is a primary cause of fracture. Vertebral body bone strength is determined by bone size, shape and density. It is also related to bone microstructure, collagen characteristics and microdamage [8]. A previous study shows that areal bone mineral density (aBMD) can explain 50–70% changes in vertebral compression strength [9].

Accurate measurement of bone mineral density (BMD) is an important basis for the diagnosis of osteoporosis. In recent years, more attention has been paid to quantitative computed tomography (QCT) because of its unique advantages, such as more accuracy than dual-energy X-ray absorptiometry (DXA) to reflect the changes in BMD. In this study, QCT was used to directly measure volume bone mineral density [vBMD (mg/cm^3)] of lumbar vertebrae. We explore the correlations between QCT-measured BMD and the characteristics of age, sex, body mass index (BMI) and osteoporotic vertebral fracture and investigate their value in discriminating vertebral fragility fracture.

Materials and methods

Fracture group and control group

Fifty-two males aged 60 years or above and 198 postmenopausal women with atraumatic spine fractures

diagnosed using X-ray, computed tomography (CT) or magnetic resonance imaging were recruited into the study from February 2010 to October 2012 in Beijing Jishuitan Hospital. All participants underwent QCT examination of lumbar vertebrae. Sex- and age-matched controls were retrieved from the database of Jishuitan hospital.

All participants were required to meet the following criteria for inclusion in the study:

1. Elderly men (≥ 60 years) or postmenopausal women.
2. Absence of abnormal bone metabolism disease (e.g., diabetes, thyroid hyperfunction, hyperparathyroidism, etc.) and no history of taking drugs that affect bone metabolism (e.g., corticosteroids, calcitonin, vitamin D, diphosphonates, etc.)

Collection of general information (e.g., age, sex, ethnicity, place of residence, height, weight, menstruation, etc.) and a history of diseases and drug use that may affect bone metabolism was performed. The field epidemiological surveys of all participants in both the fracture group and the control group were conducted by unified trained investigators. The clinical study was approved by the Ethics Committee of the Beijing Jishuitan Hospital, and written informed consents were obtained from all participants.

CT scan acquisition and data measurement

All participants underwent CT scans using a multidetector CT scanner (Aquilion, 16-slice; Toshiba, Tokyo, Japan) following a standard protocol from the L1 to the L5. Scanning parameters were as follows: 120 kVp, 125 mAs, slice thickness of 1 mm and field of view of 40 cm. A lateral scout view of T4 to L4 vertebrae is obtained for localization. The scan table height was set at 90 cm using Mindways quality control phantom (Mindways, Austin, TX, USA). When scanning with the calibration model, the patient was placed in the supine position, and his or her head was raised with both hands while the phantom was placed beneath the patient's body.

Image processing

vBMD of the lumbar spine L1–L3 was measured using the commercial software QCT Pro (Mindways Software Inc., Austin, TX, USA). When fracture occurred in any of the L1–L3 vertebrae, the BMD of the L4 or L5 vertebra was measured and used as a replacement measurement for the abandoned fractured vertebrae. In either case, BMD was calculated using the average value of three intact vertebrae (mg/cm^3).

Diagnosis of vertebral fracture

The fracture patients were all atraumatic and admitted to hospital for operation; all patients underwent complete X-ray, CT and/or magnetic resonance imaging of the spine for diagnosis of fractures.

Statistical analysis

The normal distribution data were presented as mean \pm standard deviation and compared using independent Student *t* test. The other data with skewed distribution were expressed as median (quartile difference) and compared using Mann–Whitney U test. The correlation between BMD and clinical characteristics (age, height, weight and BMI) was analysed by univariate analysis (correlation coefficient bounds from 0–0.09 to 0.1–0.3 are weakly correlated; from 0.3 to 0.5 are moderately correlated and from 0.5 to 1.0 are strongly correlated). According to the data of the univariate analysis, the statistically significant indexes were added to the multivariate logistic regression analysis. Multivariate-corrected odds ratio value of discrimination factors was calculated. Furthermore, the area under the receiver operating characteristic (ROC) curve was used as the standard to calculate the cut-off values for positive predictive value and negative predictive value of BMD in the diagnosis of vertebral fracture. All statistical analyses were performed using SPSS 19.0 (SPSS Inc., Chicago, IL, USA) and MedCalc (MedCalc Software, Mariakerke, Belgium). A *p* value < 0.05 was considered statistically significant.

Results

Difference of general characteristics between the fracture group and control group

A total of 250 cases (52 males and 198 females) and 250 controls, matched for sex and age, were included in this study. The information (age, height, weight, BMI and BMD) of all participants is shown in [Table 1](#).

In the males, weight and BMD were significantly different between the fracture group and the control group, whereas in female participants, only BMD was significantly different between the fracture and control groups.

History of trauma and clinical presentation of the fracture group

With regards to injuries, in the fracture group, although all patients had not suffered violent trauma, most patients still had varying degrees of history of injury. Of these, 87.6% (219 cases) had minor daily life injuries, and 12.4% (31 cases) had osteoporotic vertebral compression fractures without any history of trauma. Of the patients with a history of trauma, 70.32% (154 cases) were caused by minor injuries caused by flat falls, and 26.94% (59 cases) were caused by sprains caused by bending over to lift objects or shifting positions in their daily lives. Cough, epilepsy and other muscle twitching in a very small number of patients (2.74% 6 cases) can lead to vertebral compression fractures. Under normal circumstances, these injuries do not lead to fracture of the vertebral body.

Lumbar back pain is a typical symptom of osteoporotic vertebral fracture. Most of the patients (243 cases, 97.2%) had moderate or mild pain, but a small number had no

Table 1 General characteristics between the fracture group and control group.

Characteristic	Male			Female		
	Fracture group	Control group	<i>p</i>	Fracture group	Control group	<i>p</i>
Age (yrs)	77.50 (69.25–80.00)	77.50 (69.25–80.00)	0.948	68.00 (61.00–75.00)	68.00 (61.00–75.00)	0.937
Height (cm)	169.29 ± 5.99	169.77 ± 5.37	0.667	158.00 (155.00–162.00)	158.00 (154.00–162.00)	0.564
Weight (kg)	65.79 ± 11.03	69.75 ± 9.14	0.049	60.00 (54.00–65.00)	60.00 (55.00–67.00)	0.352
BMI (kg/m ²)	22.95 ± 3.61	24.20 ± 2.96	0.057	23.80 (22.05–25.78)	24.03 (22.37–26.37)	0.155
BMD (mg/cm ³)	57.22 ± 21.66	99.29 ± 30.02	0.000	39.37 (28.48–55.62)	89.91 (69.92–114.60)	0.000

BMI = body mass index; BMD = average bone mineral density measured by QCT; QCT = quantitative computed tomography.

obvious pain. The pain site of most patients was consistent with the site of fracture (224 cases, 89.6%), but a small number of patients (19 cases, 7.6%) complained of pain outside the fracture site (including diffused pain with vague location of the pain site). A small number of patients presented with significant kyphosis deformity and decreased height. Constipation is also a common symptom (in more than 30% of patients).

Correlation between BMD and age, height, weight and BMI

In males, BMD was only weakly correlated with age ($r = -0.234$). In females, BMD was weakly correlated with height ($r = 0.133$) and weight ($r = 0.120$) and was moderately correlated with age ($r = -0.387$). The correlation between BMD and the remaining variables in this study was not significant (Tables 2 and 3).

Multivariate logistic regression analysis of fracture discrimination

According to the results of univariate analysis, weight, BMI and BMD for both men and women were included in the multivariate logistic regression model. Because weight and

BMI are in a collinear relationship, we choose the forward/backward: linear regression (LR) method (stepwise regression) to exclude its effects when we construct a multivariate logistic regression model.

In males, the results showed that BMD ($p = 0.000$) was an independent protective factor for vertebral fracture in men ($p = 0.000$). This suggests that, in men, the higher the BMD, the lower the discrimination of fracture. The logistic regression equation for elderly males is modelled: $\text{logit}(p) = ((-0.069 \times \text{BMD}) + 5.189)$ (Table 4).

In females, the results showed that BMD ($p = 0.000$) was also an independent protective factor for vertebral fracture ($p = 0.000$). The logistic regression equation for postmenopausal females is modelled: $\text{logit}(p) = ((-0.068 \times \text{BMD}) + 4.523)$ (Table 4).

ROC curve

In males, the area under the ROC curve of BMD in the diagnosis of vertebral fracture was 0.885 ($p < 0.05$), and the cut-off value was 64.16 mg/cm³ (Figure 1, Table 5).

In females, the area under the ROC curve of BMD in the diagnosis of vertebral fracture was 0.906 ($p < 0.05$), and the cut-off value was 55.58 mg/cm³ (Figure 2, Table 5).

The positive predictive values and negative predictive values for the diagnosis of vertebral fracture between men and women at different BMD values are shown in Table 6.

Table 2 Correlation analysis between variables in men.

Parameters	Height	Weight	BMI	BMD
Age	-0.033	-0.039	0.020	-0.234*
Height	—	0.351*	-0.096	-0.035
Weight	—	—	0.897*	0.147
BMI	—	—	—	0.151

* $p < 0.05$; BMI = body mass index; BMD = average bone mineral density measured by QCT; QCT = quantitative computed tomography.

Table 3 Correlation analysis between variables in women.

Parameters	Height	Weight	BMI	BMD
Age	-0.256*	-0.197*	-0.091	-0.387*
Height	—	0.502*	0.550	0.133*
Weight	—	—	0.864*	0.120*
BMI	—	—	—	0.060

* $p < 0.05$; BMI = body mass index; BMD = average bone mineral density measured by QCT; QCT = quantitative computed tomography.

Discussion

In this study, we investigated the discrimination factors of vertebral fragility fracture in elderly men and postmenopausal women. Based on the vBMD measured by QCT, a model was established to predict the discrimination of vertebral fracture in elderly men and postmenopausal women. The cut-off value of BMD and the positive predictive value and negative predictive value in the diagnosis of vertebral fracture were obtained.

Vertebral fractures, the most prominent sign of osteoporosis, usually occur in the middle of the thoracic vertebra and the thoracolumbar vertebrae [10] and are the most common fragility fractures observed in the elderly population. Most patients have only minor injuries, such as falls, pick up, and even muscle twitching caused by coughing. Even many patients do not have a clear trauma. Lumbar back pain is a typical symptom of osteoporotic vertebral fracture. Physical examination showed limited spinal movement and vertebral body tenderness and percussion pain. The pain is characterized by aggravation after activity

Table 4 Multivariate logistic regression analysis of discrimination factors for vertebral fragility fracture.

Sex	Discrimination factors	B	Standard error	Wald	p	Odds ratios	Odds ratio value 95% confidence interval	
							Lower limit	Upper limit
Male	BMD	-0.069	0.013	26.678	0.000	0.934	0.910	0.958
	(Constant)	5.189						
Female	BMD	-0.068	0.007	105.027	0.000	0.934	0.922	0.946
	(Constant)	4.523						

BMD = average bone mineral density measured by QCT; QCT = quantitative computed tomography.

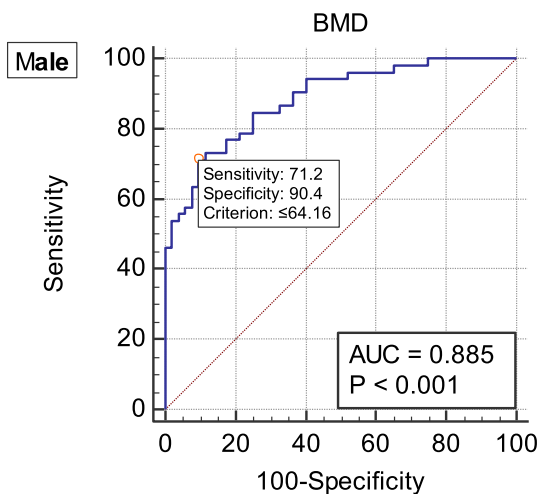


Figure 1 ROC curve of vertebral fragility fracture diagnosed by BMD in males. AUC = 0.885; cut-off value = 64.16 mg/cm³. AUC = area under the ROC curve; BMD = average bone mineral density measured by QCT; QCT = quantitative computed tomography; ROC = receiver operative characteristic.

Table 5 Area under the ROC curve in diagnosis of vertebral fracture by BMD.

Parameter	Sex	AUC	Standard error	p	95% CI	
					Lower limit	Upper limit
BMD	Male	0.885	0.0315	0.000	0.807	0.939
	Female	0.906	0.0146	0.000	0.873	0.933

AUC = area under the ROC curve; BMD = average bone mineral density measured by QCT; CI = confidence interval; QCT = quantitative computed tomography; ROC = receiver operative characteristic.

and relief at rest. The degree of pain in patients with fractures can range from mild-to-severe twitch-like pain, typically moderate pain. Mild pain is easy to be ignored. For patients who do not heal for a long time, especially patients with obvious kyphosis, vertebral compression fracture is often possible. These fractures have been associated with weight loss, spinal deformation, chronic pain and decreased quality of life. The usefulness of vertebral body fractures as a strong predictor of future fractures independent of BMD [11,12] is of great clinical significance. Considering the sizable prevalence of vertebral fractures in the population, it is alarming that the aetiology of this

Table 6 Positive and negative predictive values for the diagnosis of vertebral fractures with different BMD values.

BMD (mg/cm ³)	Male		Female	
	PPV	NPV	PPV	NPV
45	100	—	100	71.48
50	100	65.00	97.88	76.77
60	89.19	71.64	86.03	79.72
70	81.63	78.18	77.31	82.77
80	77.19	82.98	69.84	84.72
90	70.00	91.18	65.15	89.90
100	64.94	92.59	61.34	92.77
110	56.67	92.87	58.41	100
120	53.76	100	56.37	100

BMD = average bone mineral density measured by QCT; NPV = negative predictive value; PPV = positive predictive value; QCT = quantitative computed tomography.

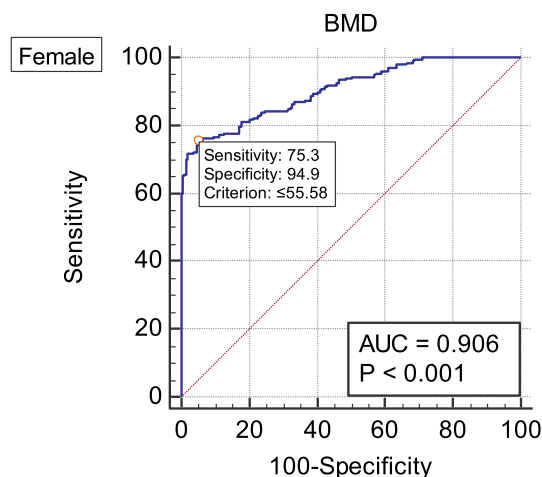


Figure 2 ROC curve of vertebral fragility vertebral fracture diagnosed by BMD in females. AUC = 0.906; cut-off value = 55.58 mg/cm³. AUC = area under ROC the curve; BMD = average bone mineral density measured by QCT; QCT = quantitative computed tomography; ROC = receiver operative characteristic.

fragility fracture still remains unclear. The reason for this may be in part because only a small percentage of this fracture-bearing population obtains imaging evidence of vertebral deformities. It may also be that formal medical treatment of vertebral fractures is often much more

delayed than treatment of limb fractures. Both scenarios would mask the condition from medical attention at a population level, obscuring better understanding.

The fracture of the vertebral body is determined by the ratio of the vertebral body's damage load to external force applied to the spine. Fracture occurs when the strength of the bone is less than the stress applied. Fragile bone structure or great external stress can be high risk factors for fracture. The changes in compressive strength of the vertebral body are mostly determined by the size of the vertebral body, or bone mass, and BMD. Laboratory studies have shown that aBMD can explain the 50–70% change in the compression strength of the vertebral body [8].

The load-bearing capacity of the vertebral body is determined by the structural capacity of the vertebral body and the state of daily activity and trauma load. Fracture can be regarded as a mechanical event when the load exceeds the strength of the bone. The damage load of the vertebral body is related not only to bone density and structure of cancellous bone in the vertebral body but also to the biomechanical properties of the vertebral body, the spine and neurophysiology [10]. The maximum strength of cancellous bone is determined by the maximum pressure on the overall structure of the vertebra. Therefore, the trivial injury mechanism or type of microdamage affects the fragility fracture. When bone strength is less than physiological or traumatic stress, fracture occurs. From the mechanical point of view, the compression force applied to the spine is transmitted from the intervertebral disc to the endplate and then distributed over the cancellous bone and the thin cortical bone that make up the vertebral body. Axial force is mainly carried by cancellous bone. External axial force is applied to the vertebral body, which produces stress and strain on the center of the cancellous bone. In extreme cases, when bone strength is weak to a certain extent, muscle forces can also lead to fracture. So, "injury" and bone strength are very important mechanical characteristic of fracture risk [13].

BMD measurement is the relatively simple standardized biomechanical indicator in bone research and is considered the most important quantitative index of bone strength [10]. Several studies on the relationship between BMD and fractures [14–18] confirmed that BMD was the primary indicator of osteoporotic fractures [19]. Studies have shown that BMD of lumbar vertebrae and hip in patients with fragile fracture is 20–30% lower on average than that in healthy controls [20]. For every 1-standard deviation decrease in BMD in American women, the risk of vertebral body fracture increased by 1.5–1.8 times [21] and that in Chinese women increased by 2.5–3.2 times [22]. Zhang et al provided normative BMD data of cervical vertebrae in an age- and sex-stratified population [23], which is beneficial in designing a more comprehensive preoperative surgical plan.

In this study, we demonstrate that BMD is an independent protective factor of osteoporotic vertebral fracture in both males and females by univariate analysis, correlation analysis, multivariate logistic regression, and ROC curve. The result is consistent with that of previous studies.

In recent years, the quantitative measurement of BMD by DXA and QCT has been widely reported. We used QCT instead of DXA to measure vertebral body BMD. Although the World Health Organization has set DXA as the standard for the

evaluation of BMD and for the diagnosis of osteoporosis in clinical work [25], the two-dimensional images acquired by DXA cannot estimate bone mass to the same degree of geometric detail as is possible with QCT's more sensitive cross-sectional three-dimensional images, and limitations such as plane projection inconsistency result in a false-positive increase of the measurement results. On the other hand, QCT can accurately obtain the true three-dimensional data and vBMD of cortical and cancellous bone in the vertebrae [4] without being impacted by severe spinal degeneration and hyperplasia, vascular calcification, oral contrast agent, posture, etc. The International Society for Clinical Densitometry Official Positions [26] assert that QCT is more sensitive than DXA. In addition to the superior imaging sensitivity of QCT over DXA, the raw data obtained by QCT can be used to analyse and study the structural changes and characteristics of bone through complex image processing.

In previous studies, Yi et al showed preoperative QCT evaluation of bone loss in femoral head and clinical application [27]. Su et al predicted hip fracture type of elderly Asian patients with low-energy fall by vBMD and femoral morphology from QCT [28]. Ma et al measured the age-related changes of bone mass in the population of East China by QCT and concluded that QCT vBMD was positively correlated with aBMD [29]. Compared with hip computed tomography X-ray absorptiometry aBMD, spinal vBMD was more sensitive to the detection of osteoporosis. Amstrup et al research data suggest that the various techniques (DXA, high resolution (HR)-pQCT and QCT) measure different characteristics of bone, and in clinical practice, they can supplement well [30].

A limitation of this study is that prospective follow-up results were not provided. Another limitation is that the sample size of male cases observed was relatively small. In addition, other factors known to affect the incidence of fracture such as paravertebral muscle traits, fat distribution, etc. were not included in this study [31–36]. Further research is needed.

Conclusions

In summary, this study suggests that vertebral fragility fracture is closely related to BMD. BMD was an independent protective factor in both elderly men and postmenopausal women. The cut-off values of BMD in the diagnosis of vertebral fracture were 64.16 mg/cm³ (male) and 55.58 mg/cm³ (female). BMD measured by QCT demonstrates high specificity and sensitivity in the diagnosis of vertebral fracture, suggesting its important value in predicting vertebral fracture.

Conflicts of interest

All authors declare that they have no conflict of interest.

Acknowledgement

This study was partially supported by the fund "Beijing Natural Science Foundation project: 17L20188". It was also funded by the "Beijing Municipal Administration of Hospitals

Clinical medicine Development of special funding support (code: XMLX201843)”, and by the grants from the “Beijing Bureau of 215 Program (No. 2013-3-033; 2009-02-03)”.

References

- [1] Willson T, Nelson SD, Newbold J, Nelson RE, Lafleur J. The clinical epidemiology of male osteoporosis: a review of the recent literature. *Clin Epidemiol* 2015;7(default):65–76.
- [2] Åkesson K, Marsh D, Mitchell PJ, McLellan AR, Stenmark J, Pierroz DD, et al. Capture the Fracture: a Best Practice Framework and global campaign to break the fragility fracture cycle. *Osteoporosis Int* 2013;24(8):2135.
- [3] Cosman F, Beur SJD, LeBoff MS, Lewiecki EM, Tanner B, Randall S, et al. The clinician’s guide to prevention and treatment of osteoporosis. *Osteoporos Int* 2014;25(10):2359–81.
- [4] Yoo JH, Moon SH, Ha YC, Dong YL, Gong HS, Si YP, et al. Osteoporotic fracture: 2015 position statement of the Korean society for bone and mineral research. *J Bone Metab* 2015;22(4):175–81.
- [5] Reginster JY, Burlet N. Osteoporosis: a still increasing prevalence. *Bone* 2006;38(2):4–9.
- [6] Sale JE, Beaton D, Bogoch E. Secondary prevention after an osteoporosis-related fracture: an overview. *Clin Geriatr Med* 2014;30(2):317–32.
- [7] O’Neill TW, Felsenberg D, Varlow J, Cooper C, Kanis JA, Silman AJ. The prevalence of vertebral deformity in European men and women: the European vertebral osteoporosis study. *J Bone Miner Res* 2010;11(7):1010–8.
- [8] Christiansen BA, Bouxsein ML. Biomechanics of vertebral fractures and the vertebral fracture cascade. *Curr Osteoporos Rep* 2010;8(4):198–204.
- [9] Lochmuller EM, Burklein D, Kuhn V, Glaser C, Muller R, Gluer CC, et al. Mechanical strength of the thoracolumbar spine in the elderly: prediction from in situ dual-energy X-ray absorptiometry, quantitative computed tomography (QCT), upper and lower limb peripheral QCT, and quantitative ultrasound. *Bone* 2002;31(1):77–84.
- [10] Briggs AM, Greig AM, Wark JD. The vertebral fracture cascade in osteoporosis: a review of aetiopathogenesis. *Osteoporos Int* 2007;18(5):575–84.
- [11] Klotzbuecher CM, Ross PD, Landsman PB, Iii TAA, Berger M. Patients with prior fractures have an increased risk of future fractures: a summary of the literature and statistical synthesis. *J Bone Miner Res* 2000;15(4):721–39.
- [12] Delmas PD, Genant HK, Crans GG, Stock JL, Wong M, Siris E, et al. Severity of prevalent vertebral fractures and the risk of subsequent vertebral and nonvertebral fractures: results from the MORE trial. *Bone* 2003;33(4):522.
- [13] Myers ER, Wilson SE. Biomechanics of osteoporosis and vertebral fracture. *Spine* 1997;22(24 Suppl.):255.
- [14] Siris ES, Genant HK, Laster AJ, Chen P, Misurski DA, Krege JH. Enhanced prediction of fracture risk combining vertebral fracture status and BMD. *Osteoporos Int* 2007;18(6):761–70.
- [15] Fujiwara S, Kasagi F, Masunari N, Naito K, Suzuki G, Fukunaga M. Fracture prediction from bone mineral density in Japanese men and women. *J Bone Miner Res* 2003;18(8):1547–53.
- [16] Siris ES, Miller PD, Barrettconnor E, Faulkner KG, Wehren LE, Abbott TA, et al. Identification and fracture outcomes of undiagnosed low bone mineral density in postmenopausal women: results from the National Osteoporosis Risk Assessment. *JAMA* 2001;286(22):2815.
- [17] Marshall D, Johnell O, Wedel H. Meta-analysis of how well measures of bone mineral density predict occurrence of osteoporotic fractures. *BMJ* 1996;25(7041):1254.
- [18] Paul DMMD, Siris ES, Barrett-Connor E, Faulkner KG, Wehren LE, Abbott TA, et al. Prediction of fracture risk in postmenopausal white women with peripheral bone densitometry: evidence from the national osteoporosis risk assessment. *J Bone Miner Res* 2002;17(12):2222–30.
- [19] 3Rd ML, Atkinson EJ, O’Fallon WM, Wahner HW, Riggs BL. Long-term fracture prediction by bone mineral assessed at different skeletal sites. *J Bone Miner Res* 1993;8(10):1227.
- [20] Ensrud KE, Schousboe JT. Clinical practice. Vertebral fractures. *N Engl J Med* 2011;364(17):1634.
- [21] Cauley JA, Palermo L, Vogt M, Ensrud KE, Ewing S, Hochberg M, et al. Prevalent vertebral fractures in black women and white women. *J Bone Miner Res* 2008;23(9):1458–67.
- [22] Kwok AW, Gong JS, Wang YX, Leung JC, Kwok T, Griffith JF, et al. Prevalence and risk factors of radiographic vertebral fractures in elderly Chinese men and women: results of Mr. OS (Hong Kong) and Ms. OS (Hong Kong) studies. *Osteoporos Int* 2013;24(3):877–85.
- [23] Yong Z, Zhuang Z, Wu CA, Zhao D, Chao W, Cheng X, et al. Population-stratified analysis of bone mineral density distribution in cervical and lumbar vertebrae of Chinese from quantitative computed tomography. *Korean J Radiol* 2016;17(5):581–9.
- [25] Kanis JA, McCloskey EV, Johansson H, Cooper C, Rizzoli R, Reginster JY. European guidance for the diagnosis and management of osteoporosis in postmenopausal women. *Osteoporos Int* 2012;24(1):23–57.
- [26] Silva BC, Broy SB, Boutroy S, Schousboe JT, Shepherd JA, Leslie WD. Fracture risk prediction by non-BMD DXA measures: the 2015 ISCD official positions part 2: trabecular bone score. *J Clin Densitom* 2015;18(3):309–30.
- [27] Yi C, Wang M, Wei J, Wang J, Wang L, Cheng X. Preoperative QCT assessment of femoral head for assessment of femoral head bone loss. *Exp Ther Med* 2017;13(4):1470–4.
- [28] Su YB, Cheng XG, Wang L, Ma YM. Predicting hip fracture type of elderly Asian patients with low-energy fall by volumetric BMD and femoral morphology from QCT. 2016.
- [29] Ma XH, Zhang W, Wang Y, Xue P, Li YK. Comparison of the spine and hip BMD assessments derived from quantitative computed tomography. *Int J Endocrinol* 2015;2015(5):675340.
- [30] Amstrup AK, Jakobsen NF, Moser E, Sikjaer T, Mosekilde L, Rejnmark L. Association between bone indices assessed by DXA, HR-pQCT and QCT scans in post-menopausal women. *J Bone Miner Metabol* 2016;34(6):1–8.
- [31] Andreoli A, Bazzocchi A, Celi M, Lauro D, Sorge R, Tarantino U, et al. Relationship between body composition, body mass index and bone mineral density in a large population of normal, osteopenic and osteoporotic women. *La Radiol Med* 2011;116(7):1115–23.
- [32] Schiessl H, Frost HM, Jee WS. Estrogen and bone-muscle strength and mass relationships. *Bone* 1998;22(1):1–6.
- [33] Ma HT, Griffith JF, Xu L, Leung PC. The functional muscle-bone unit in subjects of varying BMD. *Osteoporos Int* 2013;25(3):999–1004.
- [34] Macdonald JH, Evans SF, Davie MW, Sharp CA. Muscle mass deficits are associated with bone mineral density in men with idiopathic vertebral fracture. *Osteoporos Int* 2007;18(10):1371–8.
- [35] Ling W, Wei W, Li X, Cheng X, Ma Y, Dan L, et al. Relation of visceral and subcutaneous adipose tissue to bone mineral density in Chinese women. *Int J Endocrinol* 2013;2013(2):378632.
- [36] Popp KL, Hughes JM, Martinezbetancourt A, Scott M, Turkington V, Caksa S, et al. Bone mass, microarchitecture and strength are influenced by race/ethnicity in young adult men and women. *Bone* 2017;103:200–8.