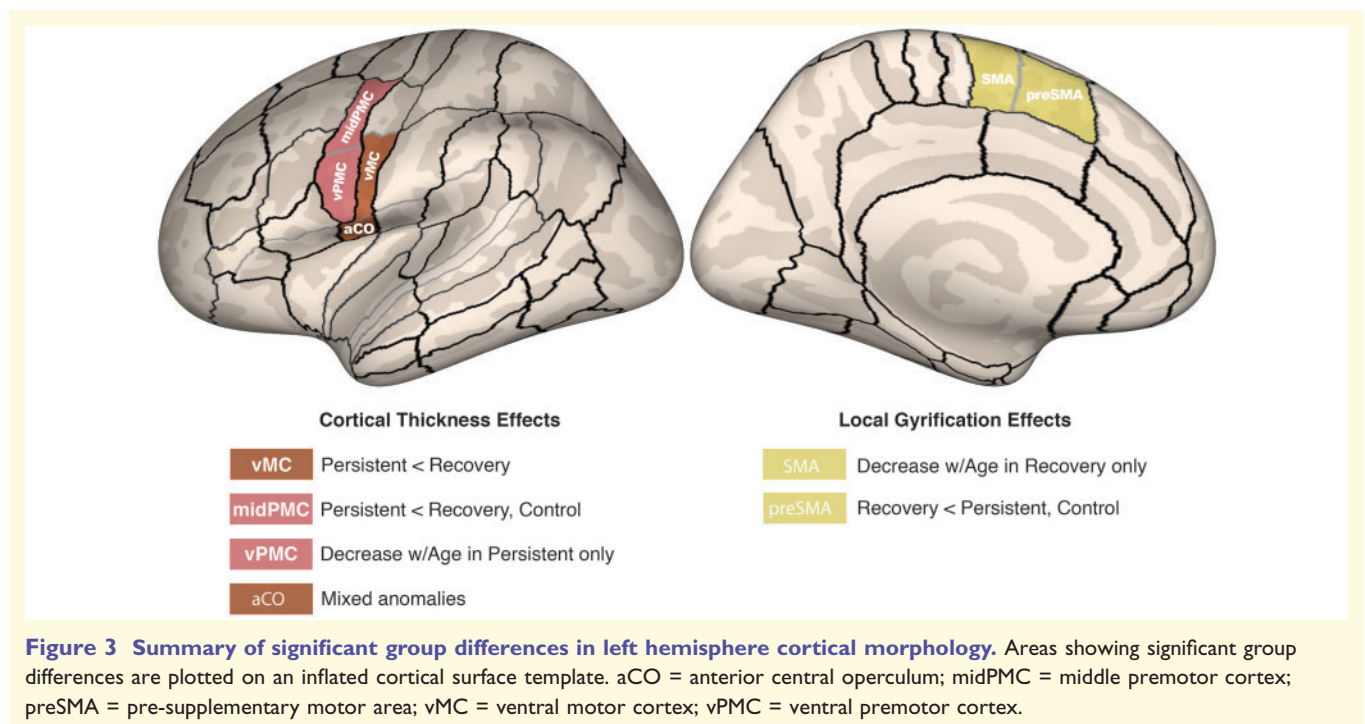


CORRIGENDUM

Emily O. Garnett, Ho Ming Chow, Alfonso Nieto-Castañón, Jason A. Tourville, Frank H. Guenther, Soo-Eun Chang. Anomalous morphology in left hemisphere motor and premotor cortex of children who stutter. *Brain* 2018; 141: 2670–2684. doi:10.1093/brain/awy199.

The authors apologize for an incorrect label in Fig. 3. Figure 3 should look and read as follows:



This has now been corrected online.