

Patient-Reported Outcomes Over 5 Years After Whole- or Partial-Breast Radiotherapy: Longitudinal Analysis of the IMPORT LOW (CRUK/06/003) Phase III Randomized Controlled Trial

Indrani S. Bhattacharya¹; Joanne S. Haviland, MSc¹; Anna M. Kirby, MD^{1,2}; Cliona C. Kirwan, PhD³; Penelope Hopwood, MD¹; John R. Yarnold¹; Judith M. Bliss¹; and Charlotte E. Coles, PhD⁴ on behalf of the IMPORT Trialists

PURPOSE IMPORT LOW demonstrated noninferiority of partial-breast and reduced-dose radiotherapy versus whole-breast radiotherapy for local relapse and similar or reduced toxicity at 5 years. Comprehensive patient-reported outcome measures collected at serial time points are now reported.

PATIENTS AND METHODS IMPORT LOW recruited women with low-risk breast cancer after breast-conserving surgery. Patients were randomly assigned to 40 Gy whole-breast radiotherapy (control), 36 Gy whole-breast and 40 Gy partial-breast radiotherapy (reduced-dose), or 40 Gy partial-breast radiotherapy only (partial-breast) in 15 fractions. European Organisation for Research and Treatment of Cancer Quality of Life Questionnaires Core 30 and Breast Cancer–Specific Module, Body Image Scale, protocol-specific items, and the Hospital Anxiety and Depression Scale were administered at baseline, 6 months, and 1, 2, and 5 years. Patterns of moderate/marked adverse effects (AEs) were assessed using longitudinal regression models, and baseline predictors were investigated.

RESULTS A total of 41 of 71 centers participated in the patient-reported outcome measures substudy; 1,265 (95%) of 1,333 patients consented, and 557 (58%) of 962 reported no moderate/marked AEs at 5 years. Breast appearance change was most prevalent and persisted over time (approximately 20% at each time point). Prevalence of breast hardness, pain, oversensitivity, edema, and skin changes reduced over time ($P < .001$ for each), whereas breast shrinkage increased ($P < .001$). Analysis by treatment group showed average number of AEs per person was lower in partial-breast (incidence rate ratio, 0.77; 95% CI, 0.71 to 0.84; $P < .001$) and reduced-dose (incidence rate ratio, 0.83; 95% CI, 0.76 to 0.90; $P < .001$) versus whole-breast group and decreased over time in all groups. Younger age, larger breast size/surgical deficit, lymph node positivity, and higher levels of anxiety/depression were baseline predictors of subsequent AE reporting.

CONCLUSION Most AEs reduced over time, with fewer AEs in the partial-breast and reduced-dose groups. Baseline predictors for AE reporting were identified. These findings will facilitate informed discussion and shared decision making for future patients receiving moderately hypofractionated breast radiotherapy.

J Clin Oncol 37:305-317. © 2018 by American Society of Clinical Oncology

Licensed under the Creative Commons Attribution 4.0 License 

ASSOCIATED CONTENT

Appendix

Data Supplements

Author affiliations and support information (if applicable) appear at the end of this article.

Accepted on October 16, 2018 and published at jco.org on December 11, 2018; DOI <https://doi.org/10.1200/JCO.18.00982>

Written on behalf of the IMPORT trialists.

Clinical trial information: ISRCTN12852634.

INTRODUCTION

Trials of hypofractionated whole-breast radiotherapy after breast-conserving surgery have demonstrated that 40 Gy in 15 fractions is safe and effective, with patients reporting lower levels of moderate/marked adverse effects (AEs) compared with 50 Gy in 2-Gy daily fractions.^{1,2} Consequently, the 3-week regimen tested in the START-B (UK Standardisation of Breast Radiotherapy B) trial¹ has become standard of care in the United Kingdom for whole-breast radiotherapy and is used internationally.³ Subsequently, IMPORT LOW (Intensity-Modulated and Partial-Organ Radiotherapy Low Risk) investigated efficacy of partial-breast versus whole-breast irradiation using standard UK hypofractionated radiotherapy.⁴ The randomized trial

schedules were: 40 Gy whole-breast radiotherapy (control); 36 Gy whole-breast and 40 Gy partial-breast radiotherapy (reduced-dose group); and 40 Gy partial-breast radiotherapy only (partial-breast group) in 15 daily fractions, using simple intensity-modulated radiotherapy (IMRT; Fig 1).

IMPORT LOW demonstrated noninferiority of partial-breast and reduced-dose radiotherapy compared with standard whole-breast radiotherapy for local relapse, with similar or fewer late normal-tissue AEs at 5 years using clinician assessments, patient-reported outcome measures (PROM), and serial photographs.⁴ These published results demonstrated that at 5 years, patients generally reported fewer moderate/ marked AEs for skin changes, breast appearance

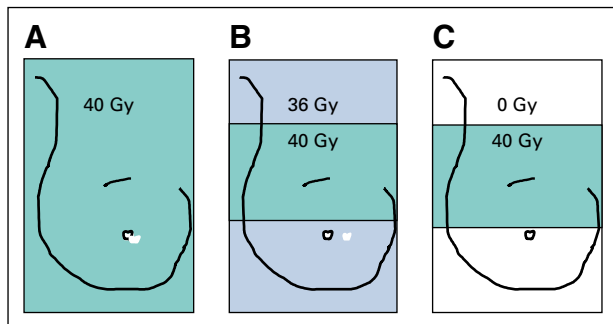


FIG 1. Schema of treatment groups: (A) whole-breast radiotherapy (control), (B) whole-breast and partial-breast radiotherapy (reduced-dose group), and (C) partial-breast radiotherapy only (partial-breast group).

change, smaller breast, and harder/firmer breast to touch in the partial-breast group compared with the whole-breast group, although the reduction was only statistically significant ($P < .001$) for change in breast appearance.⁴

This manuscript builds on the previous publication with more detailed interrogation of the large and comprehensive IMPORT LOW PROM data set. The main objective was to determine whether breast cancer treatment-related AEs improve, persist, or worsen over time to inform future patients. In addition, it was hypothesized that baseline patient-, tumor-, and treatment-specific factors could be identified that influence patterns of patient AE reporting over 5 years.

PATIENTS AND METHODS

Patients

The PROM substudy was conducted in a subset of IMPORT LOW, for which full details of patients and procedures have been published.⁴ All centers were invited to participate in the PROM substudy (until sufficient accrual to the substudy was achieved), and 41 of 71 centers participated. A majority of centers gave no reason for declining to participate, but a few stated lack of local research resources. There was no suggestion of a systematic difference between those centers that did and did not participate. All patients at these 41 centers were invited to participate in the substudy until the designated sample size was obtained.

Procedures

Details of trial procedures have been published.⁴ Women were randomly assigned to receive whole-breast radiotherapy or one of the experimental schedules (reduced-dose or partial-breast).

Patients who consented to participate in the PROM substudy completed a baseline questionnaire booklet pre-randomization. Subsequent questionnaires were posted by The Institute of Cancer Research Clinical Trials and Statistics Unit for completion at the patients' homes at 6 months and 1, 2, and 5 years postrandomization. Questionnaire items

investigated are summarized in Appendix Table A1 (online only).

Patients completed the European Organisation for Research and Treatment of Cancer (EORTC) general cancer scale (Quality of Life Questionnaire Core 30 [QLQ-C30]) and breast cancer-specific module (QLQ-BR23),^{5,6} Hospital Anxiety and Depression Scale (HADS; scores of 8 to 10 indicating borderline anxiety or depression, and scores of 11 to 21 indicating case levels of anxiety or depression),⁷ Body Image Scale,⁸ and protocol-specific questionnaire items.

Statistical Methods

All analyses conducted in the whole cohort were adjusted for treatment group. The prevalence of moderate/marked (v none/mild) AEs at each time point was determined, and changes over time were assessed using the χ^2 test for trend. A generalized estimating equation model⁹ including a treatment group/time interaction investigated whether prevalence of moderate/marked AEs over time differed between the treatment groups. A Poisson model adjusted for time and treatment group assessed whether average number of moderate/marked AEs per person changed over time and whether this varied according to treatment group. Separate generalized estimating equation models for each AE were fitted including terms for time and treatment group to investigate whether baseline factors predicted reporting of moderate/marked AEs over 5 years. Full details of methodology are available in the Data Supplement.

RESULTS

A total of 2,018 women were enrolled in IMPORT LOW from 71 participating centers; 1,333 patients from 41 centers were offered participation in the PROM substudy, and 1,265 patients (95%) consented. Most women had small (approximately 1 cm), grade 1 or 2 estrogen receptor-positive and human epidermal growth factor receptor 2-negative, node-negative tumors and received adjuvant hormonal therapy (Table 1). Baseline prevalence of anxiety and depression from HADS were 23% (borderline) and 8% (case). Patients who declined the PROM study were slightly older (median age, 70 v 60 years); however, other baseline characteristics were similar between those who did and did not consent (Table 1). Patients who did and did not return 5-year questionnaires were similar in terms of baseline characteristics, including age, tumor characteristics, surgery details, estrogen receptor status, adjuvant therapy, and body image. There was evidence that patients who did not return their 5-year questionnaires had higher baseline HADS anxiety and depression scores than those who did (data not shown). Excluding patients who had died or withdrawn, there was a higher return rate of 5-year questionnaires in patients who reported at least one AE at 2 years (362 [85%] of 425) compared with those who reported no AEs at 2 years (601 [79%] of 764; $P = .006$).

TABLE 1. Baseline Characteristics of Patients Who Consented and Declined Participation in IMPORT LOW PROM Substudy

Characteristic	No. (%)	
	Consented (n = 1,265)	Declined (n = 68)
Age, years		
Median	63	70
IQR	57-67	63-76
Side of primary	(n = 1,264)	(n = 68)
Left	638 (50.5)	31 (45.6)
Right	626 (49.5)	37 (54.4)
Pathologic tumor size, cm		
Median	1.1	1.25
IQR	0.8-1.5	0.9-1.6
Tumor grade	(n = 1,260)	(n = 68)
1	537 (42.6)	20 (29.4)
2	615 (48.8)	41 (60.3)
3	108 (8.6)	7 (10.3)
Reexcision	(n = 1,264)	(n = 68)
Yes	166 (13.1)	5 (7.4)
No	1,098 (86.9)	63 (92.6)
Axillary surgery performed	(n = 1,264)	(n = 68)
Yes	1,263 (99.9)	68 (100)
No	1 (0.1)	—
Pathologic nodal status	(n = 1,264)	(n = 68)
Positive	32 (2.5)	3 (4.4)
Negative	1,232 (97.5)	65 (95.6)
Lymphovascular invasion	(n = 854)	(n = 48)
Present	59 (6.9)	7 (14.6)
Absent	795 (93.1)	41 (85.4)
ER status	(n = 1,262)	(n = 67)
Positive	1,208 (95.7)	60 (89.6)
Poor	54 (4.3)	7 (10.4)
PR status	(n = 845)	(n = 49)
Positive	695 (82.2)	35 (71.4)
Poor	150 (17.8)	14 (28.6)
HER2 status	(n = 991)	(n = 57)
Positive	41 (4.1)	7 (12.3)
Negative	891 (89.9)	49 (85.9)
Inconclusive	59 (6.0)	1 (1.8)
Adjuvant systemic therapy received	(n = 1,259)	(n = 68)
Yes	1,183 (94.0)	65 (95.6)
No	76 (6.0)	3 (4.4)

(continued in next column)

TABLE 1. Baseline Characteristics of Patients Who Consented and Declined Participation in IMPORT LOW PROM Substudy (continued)

Characteristic	No. (%)	
	Consented (n = 1,265)	Declined (n = 68)
Type of adjuvant therapy received*	(n = 1,183)	(n = 65)
Chemotherapy	38 (3.2)	1 (1.5)
Tamoxifen	756 (63.9)	36 (55.4)
AI	475 (40.2)	21 (32.3)
Trastuzumab	17 (1.4)	2 (3.1)
Breast size†	(n = 985)	(n = 35)
Small	437 (44.4)	14 (40.0)
Medium	344 (34.9)	13 (37.1)
Large	204 (20.7)	8 (22.9)
Surgical deficit†	(n = 986)	(n = 35)
Small	639 (64.8)	19 (54.3)
Medium	258 (26.2)	13 (37.1)
Large	89 (9.0)	3 (8.6)
HADS		
Anxiety	(n = 1,243)	
Normal (0-7)	953 (76.7)	
Borderline (8-10)	177 (14.2)	
Case (11+)	113 (9.1)	
Depression	(n = 1,242)	
Normal (0-7)	1,145 (92.2)	
Borderline (8-10)	73 (5.9)	
Case (11+)	24 (1.9)	
Body Image Scale (10 items)‡		
Median	1	
IQR	0-4	

NOTE. Patients with available data shown.

Abbreviations: AI, aromatase inhibitor; ER, estrogen receptor; HADS, Hospital Anxiety and Depression Scale; HER2, human epidermal growth factor receptor 2; IMPORT LOW, Intensity-Modulated and Partial-Organ Radiotherapy Low Risk; IQR, interquartile range; PR, progesterone receptor; PROM, patient-reported outcome measure.

*Not mutually exclusive.

†Assessed on baseline photographs.

‡Higher scores for Body Image Scale indicate more problems (possible range, 0 to 30).

There was a high proportion of completed questionnaires at all time points (Fig 2).

In the whole cohort, 557 (58%) of 962 patients reported no AEs at 5 years. Overall breast appearance change was the most prevalent AE reported at each time point and persisted over time (19% at 1 year and 21% at 5 years; Table 2). Other moderate/marked AEs, with a prevalence of

TABLE 2. Moderate/Marked AEs Reported by Patients in Whole Cohort Over 5 Years

Item	No. (%)					P*
	Baseline	6 Months	1 Year	2 Years	5 Years	
BIS						
Self-conscious about appearance	58 (4.7) of 1,238	54 (5.5) of 988	40 (4.1) of 969	46 (4.4) of 1,035	36 (3.8) of 955	—
Less physically attractive as result of disease/treatment†	101 (8.3) of 1,220	74 (7.5) of 982	55 (5.7) of 958	57 (5.6) of 1,013	50 (5.3) of 944	—
Dissatisfied with appearance when dressed	40 (3.2) of 1,238	50 (5.1) of 991	35 (3.6) of 970	44 (4.3) of 1,034	26 (2.7) of 956	—
Less feminine as result of disease/treatment†	77 (6.3) of 1,222	55 (5.6) of 981	43 (4.5) of 961	42 (4.1) of 1,015	36 (3.8) of 943	—
Difficult looking at yourself naked†	78 (6.4) of 1,226	53 (5.4) of 984	50 (5.2) of 961	53 (5.2) of 1,014	55 (5.8) of 946	—
Less sexually attractive	86 (7.0) of 1,224	54 (5.6) of 973	59 (6.2) of 955	65 (6.3) of 1,025	44 (4.7) of 930	—
Avoid people because of way you felt about appearance	15 (1.2) of 1,239	12 (1.2) of 989	9 (0.9) of 971	10 (1.0) of 1,034	4 (0.4) of 956	—
Disease/treatment has left body feeling less whole	41 (3.3) of 1,237	28 (2.8) of 990	24 (2.5) of 971	21 (2.0) of 1,036	24 (2.5) of 954	—
Have you been dissatisfied with your body?†	106 (8.7) of 1,222	76 (7.7) of 983	75 (7.8) of 961	80 (7.9) of 1,014	75 (8.0) of 943	—
Dissatisfied with appearance of your scar	42 (3.4) of 1,238	27 (2.7) of 991	24 (2.5) of 971	35 (3.4) of 1,036	28 (2.9) of 957	—
PS						
Appearance of skin in breast changed	73 (10.4) of 699	86 (8.7) of 985	59 (6.1) of 969	59 (5.7) of 1,031	57 (6.0) of 949	< .001
Overall appearance of breast changed	138 (19.7) of 700	185 (18.7) of 988	179 (18.5) of 966	187 (18.1) of 1,034	195 (20.5) of 951	.79
Breast smaller	72 (10.4) of 694	122 (12.4) of 983	157 (16.2) of 967	171 (16.6) of 1,031	185 (19.5) of 951	< .001
Breast harder/firmer to touch	120 (17.2) of 697	148 (15.0) of 985	114 (11.8) of 963	73 (7.1) of 1,029	65 (6.9) of 947	< .001
Nipple position affected	70 (10.1) of 695	93 (12.0) of 776	104 (11.9) of 876	120 (11.7) of 1,030	115 (12.2) of 944	.36
Problem getting bra to fit	43 (6.2) of 698	63 (8.1) of 783	69 (7.8) of 884	83 (8.0) of 1,033	85 (8.9) of 952	—
Shoulder stiffness	60 (4.9) of 1,235	69 (7.0) of 990	61 (6.3) of 969	59 (5.7) of 1,035	47 (4.9) of 955	—
QLQ-BR23						
Pain in arm or shoulder	184 (14.9) of 1,237	119 (12.1) of 987	115 (11.9) of 966	109 (10.5) of 1,034	100 (10.5) of 957	.002
Swollen arm or hand	40 (3.2) of 1,234	18 (1.8) of 992	18 (1.9) of 967	24 (2.3) of 1,033	22 (2.3) of 955	—
Difficulty raising arm or moving it sideways	71 (5.8) of 1,234	53 (5.4) of 990	39 (4.0) of 969	43 (4.2) of 1,033	42 (4.4) of 956	—
Breast pain	137 (11.1) of 1,234	110 (11.2) of 983	67 (6.9) of 967	54 (5.2) of 1,030	44 (4.6) of 953	< .001
Breast swollen	117 (9.5) of 1,235	51 (5.2) of 988	19 (2.0) of 970	15 (1.5) of 1,029	6 (0.6) of 952	< .001
Breast oversensitive	167 (13.5) of 1,237	96 (9.7) of 990	57 (5.9) of 966	60 (5.8) of 1,033	38 (4.0) of 956	< .001
Skin problems on breast	47 (3.8) of 1,236	62 (6.3) of 990	47 (4.9) of 968	34 (3.3) of 1,033	26 (2.7) of 954	—

Abbreviations: AE, adverse effect; BIS, Body Image Scale; PS, protocol-specific item; QLQ-BR23, Quality of Life Questionnaire Breast Cancer–Specific Module.

* χ^2 test for trend performed for those items where patients reported $\geq 10\%$ moderate/marked AEs overall.

†Body image items originally from Body Image Scale but included within the BR23 questionnaire. Items were not duplicated. Response can be found in the Data Supplement.

with two (IQR, one to four) for both test groups. The average number of AEs reported per person at each time point was lower in the partial-breast (incidence rate ratio [IRR], 0.77; 95% CI, 0.71 to 0.84; $P < .001$) and reduced-dose (IRR, 0.83; 95% CI, 0.76 to 0.90; $P < .001$) groups compared with the whole-breast group.

The number of AEs per person reduced over time in all treatment groups (Fig 3), at similar rates ($P = .20$). Prevalence of moderate/marked breast hardness, pain, oversensitivity, edema, skin changes ($P < .001$ for each), and arm/shoulder pain ($P = .002$) reduced over time (Table 2). Breast shrinkage was the only AE for which prevalence increased over time ($P < .001$; Table 2). There was no difference in change in prevalence of individual AEs over time between treatment groups.

Certain baseline patient factors seemed predictive for some patient-reported AEs but not others. Younger age at random assignment was associated with worse AEs for Body Image Scale items over 5 years (Table 3). In contrast, living alone was shown to be associated with reported adverse breast swelling. Education level did not predict for any AE reporting patterns (Table 4). Baseline anxiety and depression were associated with a number of AEs (Tables 3 and 4). Patients with larger breast size were more likely to report AEs (Tables 3 and 4).

In relation to tumor- and treatment-specific factors, larger surgical deficit predicted for reporting of breast appearance change, breast shrinkage, nipple position affected, and problem getting a bra to fit (Tables 3 and 4). In addition, higher tumor grade was associated with reporting of feeling less sexually attractive and less feminine as a result of disease or treatment, and lymph node positivity predicted for pain in arm/shoulder and swollen arm/hand (Tables 3 and 4).

DISCUSSION

To our knowledge, IMPORT LOW provides the largest and most comprehensive report of AEs using PROMs at serial

time points from a randomized controlled trial of partial-breast radiotherapy. These data demonstrate that a majority of reported AEs reduced over time after moderately hypofractionated external-beam radiotherapy, and more than half of patients reported no moderate/marked AEs at 5 years. In addition, the average number of AEs reported per person at each time point was lower in both partial-breast and reduced-dose groups compared with the whole-breast group. Breast appearance change was the most prevalent AE reported, and this remained stable over time. All other AEs decreased over the 5-year period, with breast shrinkage, which increased, as the only exception.

Two randomized controlled trials investigating whole-breast radiotherapy at a dose of 40 Gy in 15 fractions used similar PROM assessments, which were performed at the same time points as in IMPORT LOW. These are the START-B hypofractionation trial,¹⁰ which compared 40 Gy in 15 fractions over 3 weeks with 50 Gy in 25 fractions over 5 weeks, and the Cambridge IMRT trial,¹¹ which compared two-dimensional radiotherapy with forward planned IMRT using 40 Gy in 15 fractions in both groups. Both studies allowed a tumor bed boost at clinician discretion.

These two trials had similar PROM time trends to those shown in IMPORT LOW, because they also showed that a majority of reported AEs reduced over a 5-year period. START-B reported reduction in breast symptoms assessed using the QLQ-BR23 subscale over 5 years after radiotherapy in both standard and hypofractionation groups.¹⁰ The Cambridge IMRT trial¹¹ reported improvement in AE reporting over the same period, but it also showed a slight initial worsening of toxicity at 6 months for skin changes, breast pain, breast oversensitivity, and breast swelling, which then improved.

A third study, the GEC-ESTRO (Groupe Européen de Curiethérapie–European Society for Radiotherapy and Oncology) trial,¹² also incorporated PROMs using the QLQ-BR23 subscale, and assessments were performed at baseline and regularly throughout the 5-year follow-up

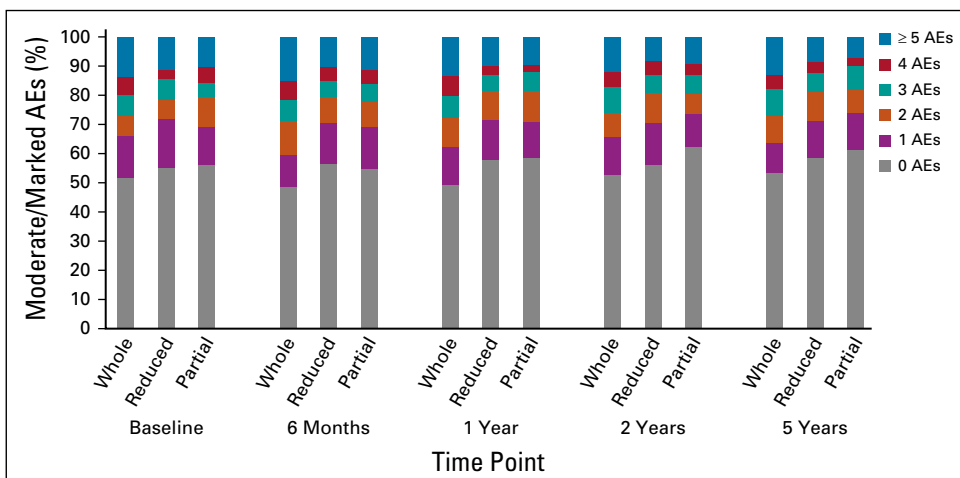


FIG 3. Number of moderate/marked adverse effects (AEs) reported per person over time by treatment group.

TABLE 3. Longitudinal Analysis of Baseline Factors Tested to Predict Moderate/Marked AEs Over 5 Years in Body Image Scale Items

Baseline Factor	Self-Conscious About Appearance	Less Physically Attractive as Result of Disease/Treatment	Dissatisfied With Appearance When Dressed	Less Feminine As Result of Disease/Treatment	Difficult Looking at Yourself Naked	Less Sexually Attractive	Avoid People Because of Way You Felt About Appearance	Disease/Treatment Has Left Body Feeling Less Whole	Have You Been Dissatisfied With Your Body?	Dissatisfied With Appearance of Your Scar
Age										
Odds ratio (95% CI)	0.95 (0.92 to 0.98)	0.94 (0.92 to 0.97)	0.97 (0.94 to 1.00)	0.95 (0.92 to 0.98)	0.97 (0.95 to 1.00)	0.95 (0.92 to 0.97)		0.96 (0.93 to 1.00)	0.96 (0.93 to 0.98)	
P	.002	< .001	.04	< .001	.04	< .001		.04	.001	
Breast size										
Small	1.0		1.0						1.0	
Medium										
Odds ratio (95% CI)	1.02 (0.62 to 1.67)		1.19 (0.70 to 2.03)						1.07 (0.72 to 1.60)	
P	.93		.51						.74	
Large										
Odds ratio (95% CI)	2.42 (1.50 to 3.91)		3.07 (1.84 to 5.12)						2.19 (1.46 to 3.31)	
P	< .001		< .001						< .001	
HADS Anxiety score										
0-7	1.0	1.0	1.0	1.0	1.0	1.0	1.0	1.0	1.0	1.0
8-10										
Odds ratio (95% CI)	3.59 (2.18 to 5.91)	2.16 (1.39 to 3.35)	2.54 (1.48 to 4.36)	2.07 (1.23 to 3.48)	2.82 (1.82 to 4.36)	1.90 (1.23 to 2.94)	3.24 (1.28 to 8.18)	2.00 (0.99 to 4.04)	2.19 (1.42 to 3.37)	1.61 (0.77 to 3.38)
P	< .001	.001	.001	.006	< .001	.004	.01	.05	< .001	.21
≥ 11										
Odds ratio (95% CI)	5.84 (3.41 to 9.99)	3.85 (2.40 to 6.18)	3.32 (1.81 to 6.10)	4.23 (2.48 to 7.22)	3.94 (2.39 to 6.52)	3.43 (2.16 to 5.45)	5.04 (1.93 to 13.15)	7.35 (3.92 to 13.79)	2.89 (1.76 to 4.75)	5.47 (2.81 to 10.66)
P	< .001	< .001	< .001	< .001	< .001	< .001	.001	< .001	< .001	< .001
HADS Depression score										
0-7	1.0	1.0	1.0	1.0	1.0	1.0	1.0	1.0	1.0	1.0
8-10										
Odds ratio (95% CI)	2.25 (1.27 to 3.97)	3.95 (2.45 to 6.36)	2.76 (1.49 to 5.11)	4.26 (2.49 to 7.29)	2.63 (1.57 to 4.39)	3.84 (2.39 to 6.17)	6.88 (2.99 to 15.83)	2.82 (1.48 to 5.38)	3.03 (1.81 to 5.06)	1.82 (0.81 to 4.07)
P	.005	< .001	.001	< .001	< .001	< .001	< .001	.002	< .001	.15
≥ 11										
Odds ratio (95% CI)	2.16 (0.82 to 5.66)	1.65 (0.66 to 4.12)	3.38 (1.30 to 8.82)	1.81 (0.65 to 5.04)	3.51 (1.60 to 7.67)	2.96 (1.29 to 6.83)	8.12 (2.72 to 24.24)	3.71 (1.58 to 8.71)	3.71 (1.58 to 8.69)	3.22 (1.20 to 8.61)
P	.12	.29	.01	.26	.002	.01	< .001	.003	.003	.02
Surgical deficit										
Small										1.0
Medium										
Odds ratio (95% CI)										3.65 (2.12 to 6.28)
P										< .001
Large										
Odds ratio (95% CI)										2.98 (1.28 to 6.93)
P										.01

(continued on following page)

TABLE 3. Longitudinal Analysis of Baseline Factors Tested to Predict Moderate/Marked AEs Over 5 Years in Body Image Scale Items (continued)

Baseline Factor	Self-Conscious About Appearance	Less Physically Attractive as Result of Disease/Treatment	Dissatisfied With Appearance When Dressed	Less Feminine As Result of Disease/Treatment	Difficult Looking at Yourself Naked	Less Sexually Attractive	Avoid People Because of Way You Felt About Appearance	Disease/Treatment Has Left Body Feeling Less Whole	Have You Been Dissatisfied With Your Body?	Dissatisfied With Appearance of Your Scar
Tumor grade										
1				1.0		1.0				
2				1.67 (1.08 to 2.58)		1.54 (1.07 to 2.22)				
<i>P</i>				.02		.02				
3				2.75 (1.38 to 5.49)		2.77 (1.57 to 4.90)				
<i>P</i>				.004		< .001				
Adjuvant chemotherapy										
No	1.0	1.0		1.0		1.0				
Yes										
Odds ratio (95% CI)	2.30 (1.08 to 4.92)	2.59 (1.31 to 5.12)		1.68 (0.74 to 3.83)		1.58 (0.78 to 3.19)				
<i>P</i>	.03	.006		.22		.21				

NOTE. Time variable and treatment group were included with each baseline factor in multivariable analysis. Factors that were statistically significant on initial multivariable analysis were tested for each individual questionnaire item with time, as listed in table.

Abbreviations: AE, adverse effect; HADS, Hospital Anxiety and Depression Scale.

TABLE 4. Longitudinal Analysis of Baseline Factors Tested to Predict Moderate/Marked AEs Over 5 Years Listed in PS and EORTC QLQ-BR23 Items

Baseline Factor	PS												
	Overall Appearance of Skin in Breast Changed	Breast Smaller	Breast Harder/Firmer to Touch	Nipple Position Affected	Problem Getting Bra to Fit	Shoulder Stiffness	Pain in Arm or Shoulder	Swollen Arm or Hand	Difficulty Raising Arm or Moving It Sideways	Breast Pain	Breast Swollen	Breast Oversensitive	Skin Problems on Breast
Age													
Odds ratio (95% CI)									0.98 (0.96 to 1.00)			0.98 (0.96 to 1.00)	
<i>P</i>									.08			.10	
Breast size													
Small	1.0												
Medium													
Odds ratio (95% CI)	0.67 (0.43 to 1.02)												
<i>P</i>	.06												
Large													
Odds ratio (95% CI)	1.82 (1.22 to 2.72)												
<i>P</i>	.003												
HADS Anxiety score													
0-7	1.0	1.0	1.0	1.0	1.0	1.0	1.0	1.0	1.0	1.0	1.0	1.0	1.0
8-10													
Odds ratio (95% CI)	1.76 (1.12 to 2.76)	1.37 (0.96 to 1.97)	1.95 (1.34 to 2.84)	1.55 (0.99 to 2.43)	1.57 (1.04 to 2.39)	1.28 (0.93 to 1.77)	1.42 (0.77 to 2.63)	1.20 (0.74 to 1.96)	1.80 (1.27 to 2.56)	2.45 (1.56 to 3.85)	2.28 (1.54 to 3.38)	1.80 (1.15 to 2.82)	
<i>P</i>	.01	.09	< .001	.06	.03	.13	.27	.46	.001	< .001	< .001	.01	
≥ 11													
Odds ratio (95% CI)	2.27 (1.33 to 3.87)	1.82 (1.16 to 2.84)	3.11 (2.00 to 4.84)	2.93 (1.83 to 4.71)	3.72 (2.41 to 5.74)	2.90 (2.05 to 4.11)	3.80 (2.12 to 6.79)	4.89 (3.18 to 7.51)	3.80 (2.59 to 5.58)	4.23 (2.55 to 7.01)	3.88 (2.49 to 6.05)	2.71 (1.62 to 4.54)	
<i>P</i>	.003	.009	< .001	< .001	< .001	< .001	< .001	< .001	< .001	< .001	< .001	< .001	
HADS Depression score													
0-7	1.0	1.0	1.0	1.0	1.0	1.0	1.0	1.0	1.0	1.0	1.0	1.0	
8-10													
Odds ratio (95% CI)	3.13 (1.82 to 5.36)	2.10 (1.28 to 3.44)	1.36 (0.80 to 2.33)	1.55 (0.93 to 2.58)	1.86 (1.25 to 2.77)	1.41 (0.70 to 2.85)	1.47 (0.86 to 2.50)	1.98 (1.29 to 3.04)	1.19 (0.64 to 2.21)	1.57 (0.93 to 2.65)	1.70 (0.96 to 3.02)		
<i>P</i>	< .001	.004	.26	.10	.002	.34	.16	.002	.59	.09	.07		
≥ 11													
Odds ratio (95% CI)	2.31 (0.90 to 5.92)	2.34 (0.99 to 5.56)	0.46 (0.15 to 1.46)	1.29 (0.57 to 2.90)	2.00 (1.07 to 3.74)	1.24 (0.44 to 3.48)	1.60 (0.75 to 3.39)	1.70 (0.86 to 3.37)	1.53 (0.60 to 3.89)	1.98 (0.84 to 4.66)	2.39 (1.06 to 5.38)		
<i>P</i>	.08	.05	.19	.54	.03	.68	.23	.13	.37	.12	.04		
Educated*													
No												1.0	
Yes												0.73 (0.53 to 1.02)	
Odds ratio (95% CI)												0.06	
<i>P</i>												0.06	
Lives alone													
No												1.0	
Yes												1.92 (1.31 to 2.83)	
Odds ratio (95% CI)												.001	
<i>P</i>												.001	
Tumor size													
Odds ratio (95% CI)												1.24 (0.94 to 1.65)	
<i>P</i>												.14	

(continued on following page)

TABLE 4. Longitudinal Analysis of Baseline Factors Tested to Predict Moderate/Marked AEs Over 5 Years Listed in PS and EORTC QLQ-BR23 Items (continued)

Baseline Factor	PS												
	Appearance of Skin in Breast Changed	Overall Appearance of Breast Changed	Breast Harder/Firmer to Touch	Nipple Position Affected	Problem Getting Bra to Fit	Shoulder Stiffness	Pain in Arm or Shoulder	Swollen Arm or Hand	Difficulty Raising Arm or Moving It Sideways	Breast Pain	Breast Swollen	Breast Oversensitive	Skin Problems on Breast
Surgical deficit													
Small	1.0	1.0	1.0	1.0	1.0								
Medium													
Odds ratio (95% CI)	2.06 (1.41 to 2.99)	2.60 (1.96 to 3.45)	2.84 (2.10 to 3.84)	1.67 (1.22 to 2.29)	2.87 (2.00 to 4.12)	1.94 (1.31 to 2.85)							
P	< .001	< .001	< .001	.001	< .001	.001							
Large													
Odds ratio (95% CI)	2.05 (1.18 to 3.56)	4.23 (2.86 to 6.26)	4.55 (3.03 to 6.85)	1.53 (0.94 to 2.50)	3.99 (2.44 to 6.58)	2.80 (1.65 to 4.74)							
P	.01	< .001	< .001	.09	< .001	< .001							
Tumor grade													
1													
2													
Odds ratio (95% CI)													
P													
3													
Odds ratio (95% CI)													
P													
LN status													
Negative													
Positive													
Odds ratio (95% CI)													
P													
Adjuvant tamoxifen													
No													
Yes													
Odds ratio (95% CI)													
P													

NOTE. Time variable and treatment group were included with each baseline factor in multivariable analysis. Factors that were statistically significant on initial multivariable analysis were tested for each individual questionnaire item with time, as listed in table.
 Abbreviations: AE, adverse effect; EORTC QLQ-BR23, European Organisation for Research and Treatment of Cancer Quality of Life Questionnaire Breast Cancer-Specific Module; HADS, Hospital Anxiety and Depression Scale; PS, protocol specific.

*Refers to any formal education including school certificate/O-level/GCSE/NVQ, A-level, professional qualification, degree and postgraduate degree (compared with no formal educational qualification).

period. Patients were randomly assigned to receive either whole-breast irradiation of 50 Gy in 25 fractions with a boost of 10 Gy or partial-breast radiotherapy using multicatheter brachytherapy. The authors found that breast symptoms assessed on the QLQ-BR23 subscale were significantly worse immediately after the last fraction of radiotherapy and at 3 months of follow-up after whole-breast versus partial-breast radiotherapy. There were no clinically significant differences between the two groups from 3 months to 5 years, and therefore, the initial worsening of symptoms in the whole-breast group were likely related to acute radiotherapy toxicity. Overall, a majority of AEs reported also seemed to decrease over time in both groups.

A fourth study, the Florence trial,¹³ used the QLQ-BR23 subscale, but only at baseline and 2 years after completion of treatment. Patients were randomly assigned to partial-breast IMRT using 30 Gy in five fractions over 1 week versus 50 Gy in 25 fractions over 5 weeks to the whole breast with an optional tumor bed boost. The partial-breast group showed improvement in PROM at 2 years, whereas breast and arm symptoms worsened in the whole-breast radiotherapy group. This difference from other reported studies may be related to the higher biologically equivalent dose with 50 Gy in 25 fractions in the whole-breast radiotherapy group compared with 40 Gy in 15 fractions in other studies. It may also reflect the smaller number of patients completing PROM questionnaires at both time points in the Florence study (205 [39%] of 520).

As per IMPORT LOW, START-B¹⁰ also demonstrated that breast shrinkage was the only patient-reported AE showing an increase in prevalence in the 5 years after completion of radiotherapy. The results of the Cambridge IMRT trial¹¹ suggested an increase in breast shrinkage over time as reported by patients, but this did not reach statistical significance. In the START-B trial, patients reported significantly less breast shrinkage in the hypofractionation group compared with the control group.¹⁰ In IMPORT LOW, there was less patient-reported breast shrinkage in the reduced-dose and partial-breast groups compared with the whole-breast group; however, this did not reach statistical significance.⁴

This increase in the prevalence of breast shrinkage over time is likely to be an effect of both fibrosis and atrophy, which are recognized late normal tissue pathophysiologic consequences of radiotherapy. Therefore, the question arises of whether breast shrinkage reported by patients may be the most appropriate end point for assessing dose-volume response within breast radiotherapy trials.

IMPORT LOW showed that breast appearance change was the most commonly reported AE, and reporting remained stable over time, with significantly lower rates in the partial-breast group. Both START-B¹⁰ and Cambridge IMRT¹¹ trials also reported breast appearance change as the most prevalent PROM, which remained stable over time.

The cumulative incidence across the 5-year period in these trials was similar to that in IMPORT LOW: approximately 20% and 18% in START-B and Cambridge IMRT, respectively. This stable reporting of breast appearance over the 5-year period may reflect the dynamic interaction of some surgical changes resolving while some radiotherapy-related changes develop over time.

In contrast, different results were found in an interim analysis of the RAPID (Randomized Trial of Accelerated Partial Breast Irradiation) study,¹⁴ testing partial-breast radiotherapy using three-dimensional conformal radiotherapy versus whole-breast radiotherapy. Patients randomly assigned to whole-breast radiotherapy showed relatively stable reporting of breast cosmesis using the EORTC cosmetic rating system¹⁵ over the 5-year period, whereas those in the partial-breast group reported significantly worse cosmesis, which seemed to increase with time. The reasons for worse cosmesis in the partial-breast radiotherapy group are unclear, but it may be related to a higher biologically equivalent dose, especially if incomplete normal tissue repair after twice-daily irradiation is considered.¹⁶

The IMPORT LOW analysis showed that certain baseline factors were associated with some patient-reported AEs. One of these factors was younger age, within the context of a cohort of perimenopausal/postmenopausal women. This observation raised the question of whether association resulted from biologic differences (ie, differences in breast composition) or perception of AEs in the younger age group. Firstly, younger age was only associated with items in the Body Image Scale that relate to patient perception of attractiveness and sexuality. In contrast, the Cambridge IMRT trial showed that younger age was associated with increased rates of patient-reported skin changes and breast hardness¹¹; however, this trial included women younger than 50 years of age, so the study population was different from that of IMPORT LOW.

Previously published results from IMPORT LOW show that there was no significant association found between age and AEs reported by clinicians or from photographs over 5 years.⁴ Similarly, in the EORTC boost versus no boost trial,¹⁷ age was not a predictor of clinician-assessed fibrosis. Taken together, these observations suggest that it was the perception of younger women within IMPORT LOW driving increased body image AE reporting rather than a biologic effect.

Larger breast size was a significant predictor of patient-reported AEs within IMPORT LOW. Patients with larger breasts were more likely to report skin changes and feeling self-conscious/dissatisfied with their appearance and body. In the Cambridge IMRT study, larger breast volume was also a main risk factor influencing patient-reported breast-related AEs.¹¹

Larger surgical deficit predicted for increased breast appearance change and breast shrinkage in IMPORT LOW. In

addition, poor baseline surgical cosmesis (related to surgical deficit) predicted for increased skin changes and breast hardness within the Cambridge IMRT trial.

Positive axillary lymph nodes predicted for worse arm/shoulder AE reporting. Similarly, the GEC-ESTRO trial reported worse arm symptom scores at baseline in patients who underwent axillary node dissection and at 3 and 6 months after whole-breast radiotherapy.¹²

In IMPORT LOW, 23% and 8% of patients were identified as being at high risk of anxiety and depression, respectively, based on baseline HADS subscale scores, and these women were more likely to report AEs. Anxiety predicted for almost all AEs, whereas association with depression was not consistently statistically significant, possibly because of a small number of patients identified as being at high risk of clinical depression. Baseline prevalence of high-risk anxiety and depression was higher in the START trials (32% and 12%, respectively) but was not investigated as a predictor of AEs.¹⁸ It has been reported that pretreatment psychological status may affect perception of cosmetic outcome from breast-conserving surgery and radiotherapy.¹⁹

Limitations include lack of baseline data regarding patient smoking, comorbidity, postoperative breast infections, and seromas, because effects of these factors were not proven to be associated with AEs during the setup of the trial. In addition, there is a possibility of reporting bias, because patients were not blinded to treatment allocation. There is an inherent risk of informative censoring with PROM questionnaire return; for example, patients with certain baseline characteristics may be more or less likely to return questionnaires. In IMPORT LOW, there were no significant differences in a majority of baseline characteristics of those who did or did not return questionnaires at 5 years, with the exception of higher baseline HADS anxiety and depression subscale scores in those who did not return their year-5

questionnaires. Bias may also arise because patients who have worse AEs may be more or less inclined to report or may represent a different subpopulation. In IMPORT LOW, we found patients who reported at least one AE at year 2 were more likely to return questionnaires at year 5; therefore, it is possible that the prevalence of AEs was overestimated in this analysis. Finally, IMPORT LOW was conducted in a lower-risk population and therefore may not be generalizable to all patients with early breast cancer.

These results demonstrate that a majority of AEs reported reduce over time. This information can provide reassurance for patients considering either whole-breast or partial-breast radiotherapy using moderately fractionated IMRT. Furthermore, baseline factors that predict AEs may be considered before radiotherapy and contribute to the informed discussion and shared clinician-patient decision-making process. Finally, this comprehensive serial analysis of PROMs adds further support to the hypothesis that partial-breast radiotherapy using moderately fractionated IMRT has less toxicity compared with whole-breast irradiation.

In conclusion, IMPORT LOW provides a unique opportunity to investigate the breadth and depth of data from a longitudinal analysis of PROMs in a large partial-breast radiotherapy trial. The results provide reassurance for future patients receiving either whole- or partial-breast moderately hypofractionated radiotherapy that treatment sequelae usually improve over time, with more than half of patients reporting no moderate/marked AEs at 5 years. Furthermore, patients receiving partial-breast radiotherapy reported fewer AEs compared with whole-breast radiotherapy using this technique. In addition, baseline factors that predict AEs can be assessed before radiotherapy, allowing tailoring of risk-benefit discussions for individuals.

AFFILIATIONS

¹The Institute of Cancer Research, London, United Kingdom

²Royal Marsden National Health Service Foundation Trust, London, United Kingdom

³University of Manchester and University Hospital of South Manchester, Manchester, United Kingdom

⁴Cambridge University, Cambridge, United Kingdom

CORRESPONDING AUTHOR

Charlotte E. Coles, PhD, Cambridge University Department of Oncology, Box 193, Hills Rd, Cambridge, CB2 0QQ, United Kingdom; e-mail: colesc@doctors.org.uk.

EQUAL CONTRIBUTION

I.S.B. and J.S.H. contributed equally to this work as first authors; J.M.B. and C.E.C. contributed equally to this work as senior authors.

PRIOR PRESENTATION

Presented orally at the 11th European Breast Cancer Conference, Barcelona, Spain, March 21-23, 2018.

SUPPORT

Supported by Grant No. C1491/A6035 from Cancer Research UK; National Institute for Health Research (NIHR) Cancer Research Network; National Health Service Research Scotland; Health and Care Research Wales; NIHR Royal Marsden/Institute of Cancer Research Biomedical Research Centre; Cambridge NIHR Biomedical Research Centre (C.E.C.); and Cancer Research UK Clinical Trial Fellowship No. C1491/A8895 (I.S.B.); IMPORT LOW is sponsored by the Institute of Cancer Research, London, United Kingdom.

AUTHORS' DISCLOSURES OF POTENTIAL CONFLICTS OF INTEREST AND DATA AVAILABILITY STATEMENT

Disclosures provided by the authors and data availability statement (if applicable) are available with this article at DOI <https://doi.org/10.1200/JCO.18.00982>.

AUTHOR CONTRIBUTIONS

Conception and design: Joanne S. Haviland, Anna M. Kirby, Penelope Hopwood, John R. Yarnold, Judith M. Bliss, Charlotte E. Coles

Collection and assembly of data: John R. Yarnold, Judith M. Bliss, Charlotte E. Coles

Data analysis and interpretation: All authors

Manuscript writing: All authors

Final approval of manuscript: All authors

Accountable for all aspects of the work: All authors

ACKNOWLEDGMENT

We thank the patients who participated in this study and all investigators and research support staff, past and present, at participating centers; all trials unit staff at The Institute of Cancer Research Clinical Trials and Statistics Unit who contributed to the central coordination of the study, including Jenny Titley, Ronald Kaggwa, and Marie Emson; and the National Cancer Research Institute Radiotherapy Trials Quality Assurance group at Mount Vernon Hospital for overseeing radiotherapy planning and delivery throughout the study.

REFERENCES

- Haviland JS, Owen JR, Dewar JA, et al: The UK Standardisation of Breast Radiotherapy (START) trials of radiotherapy hypofractionation for treatment of early breast cancer: 10-year follow-up results of two randomised controlled trials. *Lancet Oncol* 14:1086-1094, 2013
- Whelan TJ, Pignol JP, Levine MN, et al: Long-term results of hypofractionated radiation therapy for breast cancer. *N Engl J Med* 362:513-520, 2010
- Smith BD, Bellon JR, Blitzblau R, et al: Radiation therapy for the whole breast: Executive summary of an American Society for Radiation Oncology (ASTRO) evidence-based guideline. *Pract Radiat Oncol* 8:145-152, 2018
- Coles CE, Griffin CL, Kirby AM, et al: Partial-breast radiotherapy after breast conservation surgery for patients with early breast cancer (UK IMPORT LOW trial): 5-year results from a multicentre, randomised, controlled, phase 3, non-inferiority trial. *Lancet* 390:1048-1060, 2017
- Aaronson NK, Ahmedzai S, Bergman B, et al: The European Organization for Research and Treatment of Cancer QLQ-C30: A quality-of-life instrument for use in international clinical trials in oncology. *J Natl Cancer Inst* 85:365-376, 1993
- Sprangers MA, Groenvold M, Arraras JI, et al: The European Organization for Research and Treatment of Cancer breast cancer-specific quality-of-life questionnaire module: First results from a three-country field study. *J Clin Oncol* 14:2756-2768, 1996
- Zigmond AS, Snaith RP: The hospital anxiety and depression scale. *Acta Psychiatr Scand* 67:361-370, 1983
- Hopwood P, Fletcher I, Lee A, et al: A body image scale for use with cancer patients. *Eur J Cancer* 37:189-197, 2001
- Hanley JA, Negassa A, Edwardes MD, et al: Statistical analysis of correlated data using generalized estimating equations: An orientation. *Am J Epidemiol* 157:364-375, 2003
- Hopwood P, Haviland JS, Sumo G, et al: Comparison of patient-reported breast, arm, and shoulder symptoms and body image after radiotherapy for early breast cancer: 5-year follow-up in the randomised Standardisation of Breast Radiotherapy (START) trials. *Lancet Oncol* 11:231-240, 2010
- Mukesh MB, Qian W, Wilkinson JS, et al: Patient reported outcome measures (PROMs) following forward planned field-in field IMRT: Results from the Cambridge Breast IMRT trial. *Radiother Oncol* 111:270-275, 2014
- Schäfer R, Strnad V, Polgár C, et al: Quality-of-life results for accelerated partial breast irradiation with interstitial brachytherapy versus whole-breast irradiation in early breast cancer after breast-conserving surgery (GEC-ESTRO): 5-year results of a randomised, phase 3 trial. *Lancet Oncol* 19:834-844, 2018
- Meattini I, Saieva C, Miccinesi G, et al: Accelerated partial breast irradiation using intensity modulated radiotherapy versus whole breast irradiation: Health-related quality of life final analysis from the Florence phase 3 trial. *Eur J Cancer* 76:17-26, 2017
- Olivotto IA, Whelan TJ, Parpia S, et al: Interim cosmetic and toxicity results from RAPID: A randomized trial of accelerated partial breast irradiation using three-dimensional conformal external beam radiation therapy. *J Clin Oncol* 31:4038-4045, 2013
- Aaronson NK, Bartelink H, van Dongen JA, et al: Evaluation of breast conserving therapy: clinical, methodological and psychosocial perspectives. *Eur J Surg Oncol* 14:133-140, 1988
- Yarnold J, Bentzen SM, Coles C, et al: Hypofractionated whole-breast radiotherapy for women with early breast cancer: Myths and realities. *Int J Radiat Oncol Biol Phys* 79:1-9, 2011
- Collette S, Collette L, Budiharto T, et al: Predictors of the risk of fibrosis at 10 years after breast conserving therapy for early breast cancer: A study based on the EORTC Trial 22881-10882 'boost versus no boost'. *Eur J Cancer* 44:2587-2599, 2008 [Erratum: *Eur J Cancer* 45:2061, 2009]
- Hopwood P, Sumo G, Mills J, et al: The course of anxiety and depression over 5 years of follow-up and risk factors in women with early breast cancer: Results from the UK Standardisation of Radiotherapy Trials (START). *Breast* 19:84-91, 2010
- Deshields TL, Reschke A, Walker MS, et al: Psychological status at time of diagnosis and patients' ratings of cosmesis following radiation therapy for breast cancer. *J Psychosoc Oncol* 25:103-116, 2007



AUTHORS' DISCLOSURES OF POTENTIAL CONFLICTS OF INTEREST

Patient-Reported Outcomes Over 5 Years After Whole- or Partial-Breast Radiotherapy: Longitudinal Analysis of the IMPORT LOW (CRUK/06/003) Phase III Randomized Controlled Trial

The following represents disclosure information provided by authors of this manuscript. All relationships are considered compensated. Relationships are self-held unless noted. I = Immediate Family Member, Inst = My Institution. Relationships may not relate to the subject matter of this manuscript. For more information about ASCO's conflict of interest policy, please refer to www.asco.org/rwc or ascopubs.org/jco/site/ifc.

Cliona C. Kirwan

Research Funding: Karmanos Cancer Institute

Judith M. Bliss

Research Funding: AstraZeneca, Merck Sharp & Dohme, Medivation, Puma Biotechnology, Clovis Oncology, Pfizer, Janssen-Cilag, Novartis, Roche
Travel, Accommodations, Expenses: Pfizer

No other potential conflicts of interest were reported.

APPENDIX

The IMPORT Trialists' Group consists of the Trial Management Group, Trial Steering Committee, Independent Data Monitoring Committee, and the principal and main coinvestigators at the participating centers.

TABLE A1. Summary of Questionnaire Items Investigated to Identify Proportion of Moderate/Marked AEs

Item
QLQ-BR23 (shoulder, breast, and arm; during past week)
Did you have any pain in your arm or shoulder?
Did you have a swollen arm or hand?
Was it always difficult to raise your arm or to move it sideways?
Have you had pain in the area of your affected breast?
Was the area of your affected breast swollen?
Was the area of your affected breast oversensitive?
Have you had skin problems on or in the area of your affected breast (e.g. itchy, dry, flaky)?
Body Image Scale (during past week)
Have you been self-conscious about your appearance?
Have you felt less physically attractive as a result of your disease or treatment?*
Have you been dissatisfied with your appearance when dressed?
Have you been feeling less feminine as a result of your disease or treatment?*
Did you find it difficult to look at yourself naked?*
Have you been feeling less sexually attractive as a result of your disease or treatment?
Did you avoid people because of the way you felt about your appearance?
Have you been feeling the disease or treatment has left your body less whole?
Have you been dissatisfied with your body?*
Have you been dissatisfied with the appearance of your scar?
Protocol-specific items (any changes to your breast that may have resulted from any of your breast cancer treatments)
Has the appearance of the skin in the area of your affected breast changed?
Has the overall appearance of your breast changed, compared with the other side?
Has your affected breast become smaller?
Has your affected breast become harder/firmer to the touch?
Is the position of the nipple of your affected breast different from the other side?
Have you had a problem getting a bra to fit?
Did you have any stiffness in your shoulder?

Abbreviations: AE, adverse effect; QLQ-BR23, Quality of Life Questionnaire Breast Cancer–Specific Module.

*Refer to past week.