

# An AR-ERG transcriptional signature defined by long-range chromatin interactomes in prostate cancer cells

Zhizhuo Zhang,<sup>1,2,3,9</sup> Kern Rei Chng,<sup>4,9</sup> Shreyas Lingadahalli,<sup>5,6,9</sup> Zikai Chen,<sup>4,5,6</sup> Mei Hui Liu,<sup>4,10</sup> Huy Hoang Do,<sup>4</sup> Shaojiang Cai,<sup>4</sup> Nicola Rinaldi,<sup>2</sup> Huay Mei Poh,<sup>4</sup> Guoliang Li,<sup>4,7</sup> Ying Ying Sung,<sup>4</sup> Charlie L. Heng,<sup>4</sup> Leighton J. Core,<sup>8,11</sup> Si Kee Tan,<sup>4</sup> Xiaoan Ruan,<sup>4,12</sup> John T. Lis,<sup>8</sup> Manolis Kellis,<sup>2,3</sup> Yijun Ruan,<sup>4,12</sup> Wing-Kin Sung,<sup>1,4</sup> and Edwin Cheung<sup>4,5,6</sup>

<sup>1</sup>School of Computing, National University of Singapore, Singapore 117417; <sup>2</sup>Computer Science and Artificial Intelligence Laboratory, Massachusetts Institute of Technology, Cambridge, Massachusetts 02139, USA; <sup>3</sup>Broad Institute of MIT and Harvard, Cambridge, Massachusetts 02142, USA; <sup>4</sup>Genome Institute of Singapore, Singapore 138672; <sup>5</sup>Cancer Centre, <sup>6</sup>Centre of Precision Medicine Research and Training, Faculty of Health Sciences, University of Macau, Taipa, Macau 999078, China; <sup>7</sup>National Key Laboratory of Crop Genetic Improvement, Agricultural Bioinformatics Key Laboratory of Hubei Province, College of Informatics, Huazhong Agricultural University, Wuhan, Hubei 430070, China; <sup>8</sup>Department of Molecular Biology and Genetics, Cornell University, Ithaca, New York 14853, USA

The aberrant activities of transcription factors such as the androgen receptor (AR) underpin prostate cancer development. While the AR *cis*-regulation has been extensively studied in prostate cancer, information pertaining to the spatial architecture of the AR transcriptional circuitry remains limited. In this paper, we propose a novel framework to profile long-range chromatin interactions associated with AR and its collaborative transcription factor, erythroblast transformation-specific related gene (ERG), using chromatin interaction analysis by paired-end tag (ChIA-PET). We identified ERG-associated long-range chromatin interactions as a cooperative component in the AR-associated chromatin interactome, acting in concert to achieve coordinated regulation of a subset of AR target genes. Through multifaceted functional data analysis, we found that AR-ERG interaction hub regions are characterized by distinct functional signatures, including bidirectional transcription and cotranscription factor binding. In addition, cancer-associated long noncoding RNAs were found to be connected near protein-coding genes through AR-ERG looping. Finally, we found strong enrichment of prostate cancer genome-wide association study (GWAS) single nucleotide polymorphisms (SNPs) at AR-ERG co-binding sites participating in chromatin interactions and gene regulation, suggesting GWAS target genes identified from chromatin looping data provide more biologically relevant findings than using the nearest gene approach. Taken together, our results revealed an AR-ERG-centric higher-order chromatin structure that drives coordinated gene expression in prostate cancer progression and the identification of potential target genes for therapeutic intervention.

[Supplemental material is available for this article.]

A major effort in prostate cancer biology is to understand how the androgen receptor (AR) mediates prostate cancer development and maintenance (Shen and Abate-Shen 2010; Chng and Cheung 2013; Sung and Cheung 2014). A number of studies have shown that AR is responsible for dictating the transcriptional output that fuels the growth and survival of prostate cancer cells (Wang et al. 2007, 2009; Tan et al. 2012). Accordingly, therapies targeted against AR are highly touted for the treatment of prostate cancer (Tran et al. 2009; Clegg et al. 2012). Recent findings from the analysis of genome-wide AR binding profiles (Wang et al. 2005, 2009)

revealed a highly complex transcriptional circuitry in which AR likely acts through distal enhancers far from gene promoters to achieve gene regulation (Yu et al. 2010; Chng et al. 2012). In addition to regulating AR target gene transcription, AR-associated chromatin looping also appears to be involved in the formation of recurrent fusion genes in prostate cancers (Lin et al. 2009; Mani et al. 2009). Together, these findings suggest that AR-associated chromatin interactions play an important role in prostate cancer biology.

AR acts in conjunction with a number of collaborative transcription factors (co-TFs) to precisely regulate the transcription of target genes in prostate cancer cells (Wang et al. 2007). Thus, co-TFs might also be involved in AR-associated chromatin interactions. Indeed, findings from our group and others suggest

<sup>9</sup>These authors contributed equally to this work.

Present addresses: <sup>10</sup>Food Science and Technology Programme, Department of Chemistry, National University of Singapore, Singapore 117543; <sup>11</sup>Molecular and Cell Biology Institute for Systems Genomics, University of Connecticut, Farmington, CT 06030, USA; <sup>12</sup>The Jackson Laboratory for Genomic Medicine, Farmington, CT 06032, USA

Corresponding authors: yijun.ruan@jax.org, manoli@mit.edu, sungk@gis.a-star.edu.sg, echeung@umac.mo

Article published online before print. Article, supplemental material, and publication date are at <http://www.genome.org/cgi/doi/10.1101/gr.230243.117>.

© 2019 Zhang et al. This article is distributed exclusively by Cold Spring Harbor Laboratory Press for the first six months after the full-issue publication date (see <http://genome.cshlp.org/site/misc/terms.xhtml>). After six months, it is available under a Creative Commons License (Attribution-NonCommercial 4.0 International), as described at <http://creativecommons.org/licenses/by-nc/4.0/>.

transcriptional crosstalk between AR and the prostate cancer recurrent fusion gene, ERG, could be established through chromatin loops (Chen and Sawyers 2010; Chng et al. 2012). With regard to genome organization, recent studies showed that (1) ectopic expression of ERG in prostate cancer cells leads to a global alteration of higher-order chromatin organization (Rickman et al. 2012), (2) a chromosomal rearrangement-prone phenotype appears to be associated with ERG-fusion-positive prostate cancers (Pflueger et al. 2011), and (3) AR and ERG colocalized binding sites are enriched in breakpoints in ERG-fusion-positive prostate cancers but not in their ERG-fusion-negative counterparts (Berger et al. 2011). Taken together, these findings strongly suggest the importance of ERG in AR-associated higher-order chromatin structure for transcriptional activity and in the development of genomic structural alterations.

In this study, utilizing our previously developed genomic technology (Fullwood et al. 2009), chromatin interaction analysis by paired-end tag (ChIA-PET) sequencing, we comprehensively mapped AR- and ERG-associated chromatin loops and characterized in detail their interaction and transcriptional landscape in prostate cancer cells.

## Results

### The AR interactome landscape in ERG-fusion-positive prostate cancer cells

Using ChIA-PET, we constructed a genome-wide map of long-range chromatin interactions associated with AR in VCaP cells 2 h after androgen stimulation (Fig. 1A). Nonchimeric and uniquely mapped PET reads were utilized to define AR-associated chromatin loops (Supplemental Tables S1–S3). Genomic structural rearrangements in VCaP cells that were identified from our in-house-generated genome-wide pair-end DNA sequencing (G-PET) and publicly available paired-end DNA sequencing with chromatin immunoprecipitation (ChIP-PET) data (Yu et al. 2010) were excluded as looping artifacts (Supplemental Table S4). The AR binding sites (ARBSs) derived from the ChIA-PET data in this study are largely in concordance with our previously generated chromatin immunoprecipitation sequencing (ChIP-seq) of AR (Chng et al. 2012), indicating consistencies between immunoprecipitation techniques (Supplemental Fig. S1). To establish the validity of the ChIA-PET-defined chromatin interactions, we performed DNA-fluorescence in situ hybridization (DNA-FISH) and were able to confirm seven out of eight AR-associated chromatin interactions that we identified from our data set (Fisher's exact test  $P < 0.05$ ) (Fig. 1B,C; Supplemental Figs. S2–S8). Altogether, we identified 62,286 high-quality ARBSs and 70,133 AR-associated chromatin interactions.

We began by determining some of the basic properties of the ARBS in long-range chromatin interactions. Overall, we found 55% of the ARBSs serve as anchors for AR-associated chromatin interactions (AR<sub>anchor</sub>): 34% in complex interactions and 21% in duplex interactions (Fig. 1D). This observation is similar to CTCF- (Handoko et al. 2011), POLR2A- (Li et al. 2012), and ESRI- (Fullwood et al. 2009) mediated chromatin interactions. The remaining ARBSs (45%) not participating in any chromatin interactions were placed in a single category (AR<sub>alone</sub>). Furthermore, we observed that most AR<sub>anchor</sub> (~60%) do not interact with their nearest genes (Fig. 1E).

Next, we investigated the relationship between AR-associated chromatin interactions and the androgen-induced transcriptome.

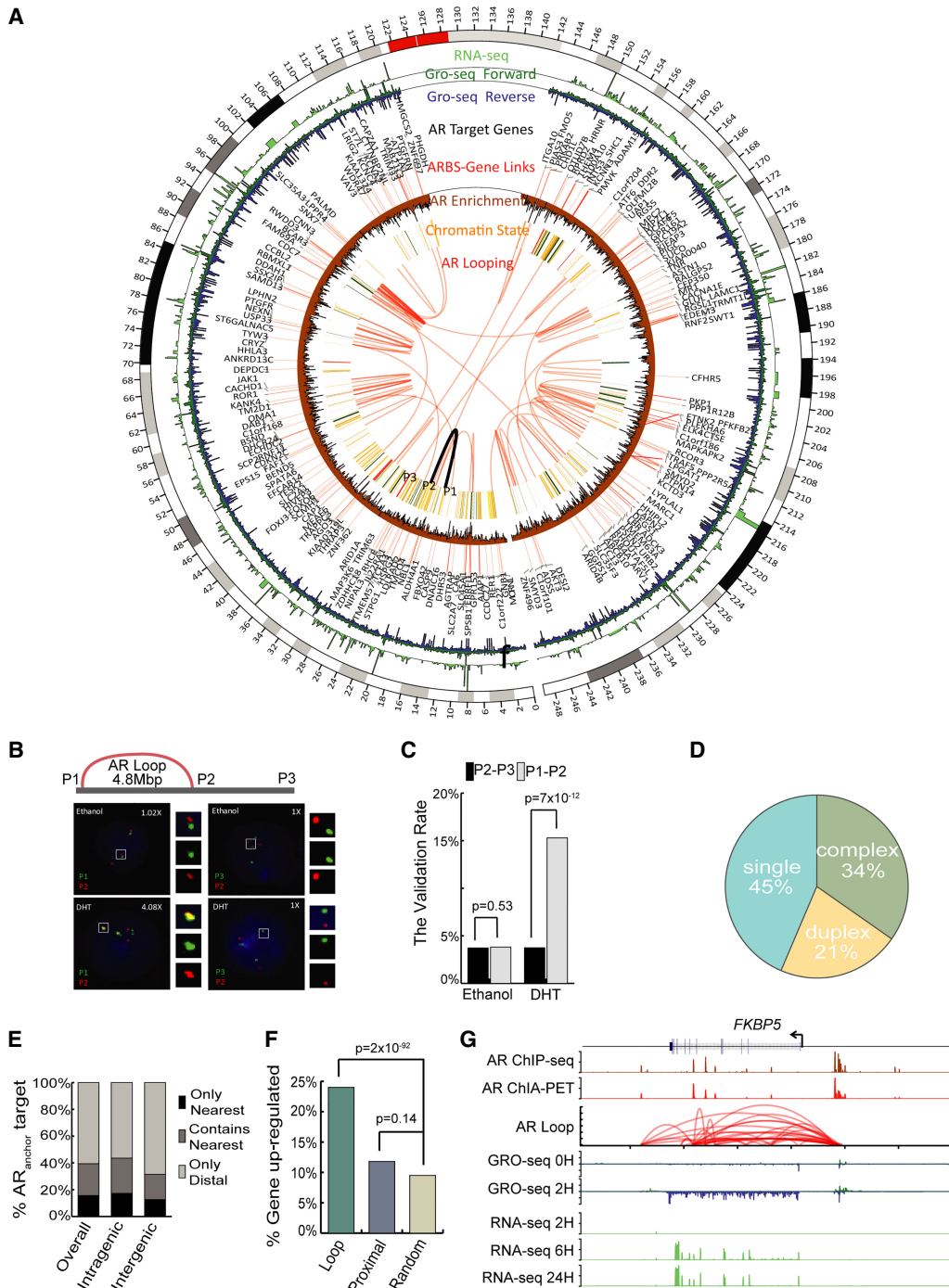
For this, we performed GRO-seq (0 and 2 h post-DHT stimulation) and RNA-seq (0, 6, and 24 h post-DHT stimulation) on VCaP cells to assess both the direct transcriptional response and the steady-state RNA levels of androgen-regulated genes, respectively (Fig. 1A; Supplemental Fig. S9). Globally, we found there were approximately twofold more androgen up-regulated genes associating with AR<sub>anchor</sub> (Loop) as compared with AR<sub>alone</sub> proximal to the TSS (Proximal) (green vs. blue, Fig. 1F). This result is consistent with the hypothesis that AR can up-regulate transcription through long-range chromatin interaction. Furthermore, these observations highlight the limitations of identifying AR target genes based on the proximity to ARBSs and underscore the need of an AR interactome map for this purpose.

*FKBP5*, a well-known AR target gene, is an early androgen-responsive gene whose expression is maintained throughout long exposure to androgen stimulation. ARBSs located at both distal upstream sites and in the intronic region of *FKBP5* have been implicated in regulation of the gene (Fig. 1G; Magee et al. 2006; Makkonen et al. 2009; Chng et al. 2012; Tan et al. 2012; Sahu et al. 2014) but with unclear roles. From our AR interactome map, we now provide evidence to show that *FKBP5* is transcriptionally up-regulated through AR-associated chromatin interactions spanning the promoter and several enhancers. These findings show that chromatin interaction data are critical for elucidating the long-range gene regulatory mechanisms.

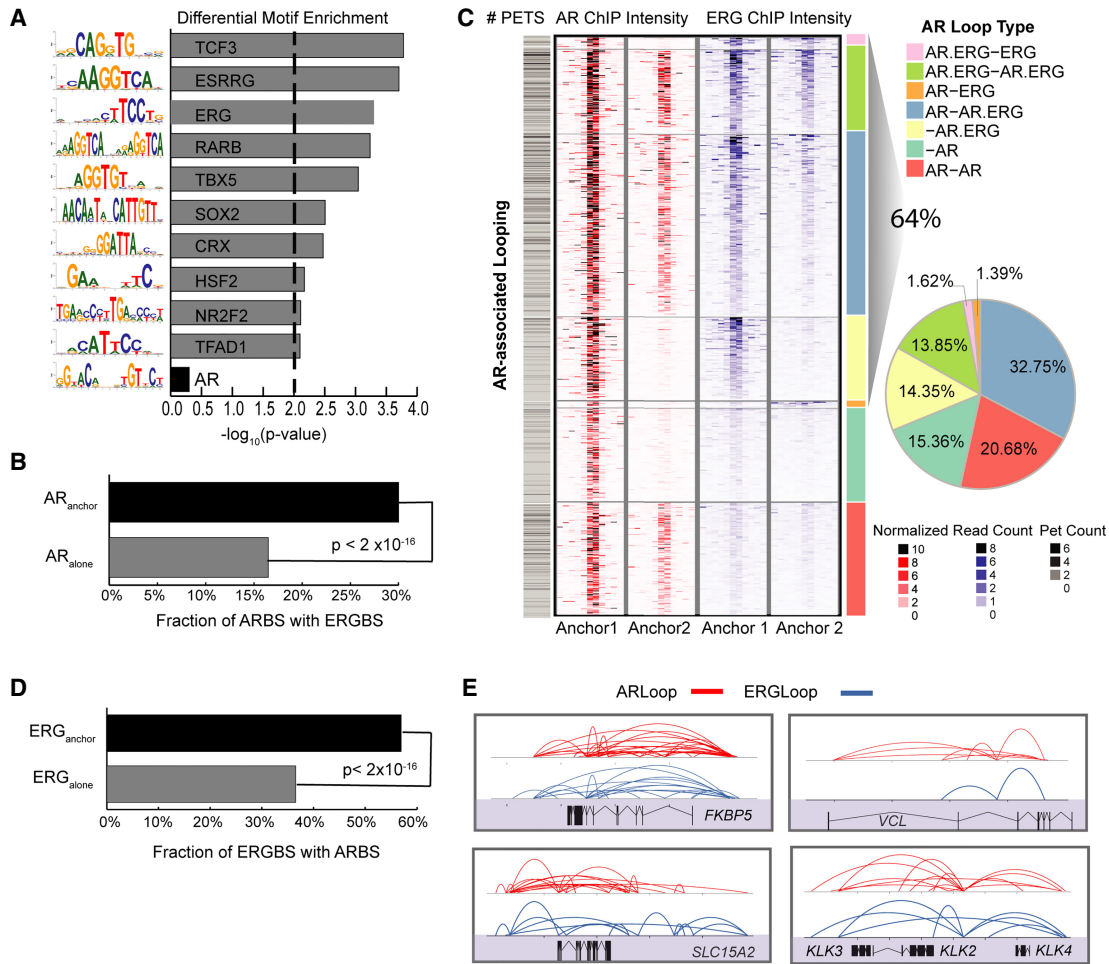
### ERG is involved in AR-associated chromatin interactions

Co-TFs work together with nuclear hormone receptors to coordinate different steps in the transcription process, including long-range chromatin interaction (Fullwood et al. 2009; Zhang et al. 2011; Chng et al. 2012). ERG is a well-known co-TF of AR in prostate cancer; however, it is unclear if ERG functions together with AR in modulating long-range chromatin interactions. To address this, we searched for TF DNA motif sequences that are differentially enriched between AR<sub>anchor</sub> and AR<sub>alone</sub>. As shown in Figure 2A, the motif sequence for ERG is highly enriched in AR<sub>anchor</sub> compared to AR<sub>alone</sub>. In contrast, other important transcription factors like FOXA1 and HOXA1 were not differentially enriched between these two types of ARBS (Supplemental Fig. S10). When we overlapped the ARBSs identified from the AR interactome with our previously defined set of ERG binding sites (ERGBSSs) (Chng et al. 2012), there was a significant enrichment (Binomial test;  $P$ -value  $< 2 \times 10^{-16}$ ) of ERGBSS co-occurring with AR<sub>anchor</sub> in comparison to AR<sub>alone</sub> (Fig. 2B). Moreover, a large proportion (64%) of AR loop anchors were found to be occupied by ERG with binding intensity correlating to that of AR (Fig. 2C; Supplemental Fig. S11). These findings demonstrate the preferential recruitment of ERG to AR<sub>anchor</sub> over AR<sub>alone</sub> and the potential involvement of ERG in AR-associated chromatin interaction events.

Due to the above observations, we generated a ChIA-PET interactome map for ERG and dissected the crosstalk between ERG and AR in long-range chromatin interactions (Supplemental Tables S5, S6). Notably, the fraction of ARBSs (57%) co-occurring with ERGBSSs that are involved in long-range chromatin interactions (ERG<sub>anchor</sub>) was significantly higher than ARBS at ERGBSSs that do not participate in long-range interaction (ERG<sub>alone</sub>) (38%; Binomial test;  $P$ -value  $< 2 \times 10^{-16}$ ) (Fig. 2D). With respect to androgen-mediated transcription, we observed ERG-associated chromatin loops intertwining with AR-associated chromatin loops around androgen-regulated genes and gene clusters including but not limited to *FKBP5*, *VCL*, the *KLK* gene family, and the *EAF2*-



**Figure 1.** The genome-wide AR interactome in prostate cancer cells. (A) Circos (Krzyszynski et al. 2009) view of the AR interactome landscape in Chromosome 1. From *innermost* to *outermost*: (1) AR ultra-long-range looping (> 1 Mbp), FISH-validated loops are highlighted in black, and the locations of the three FISH probes P1, P2, and P3 are annotated; (2) chromatin state track; (3) AR-Genes Linking; (4) AR target genes; (5) GRO-seq signal 2 h after DHT; (6) RNA-seq signal 6 h after DHT. (B) FISH analysis for the intra-Chromosome 1 interaction (16934619–21771843). (C) Summary of the validation rate of FISH experiments from examining 180 cells. (D) Breakdown of AR binding sites (ARBS) according to their associated type of chromatin interaction model classification from our previous study (Fullwood et al. 2009). (E) The fraction of AR<sub>anchor</sub> in either intra-genic regions or inter-genic regions whose target genes were defined by ChIA-PET interaction matching the nearest gene. (Only Nearest) the nearest gene is the only target gene, (Contain Nearest) the nearest gene is one of the target genes, (Only Distal) the nearest gene is not one of the target genes. (F) Bar plot (Wickham 2009) showing the fraction of genes from different categories that are up-regulated after DHT. The genes with AR looping in their TSS show more up-regulation events than genes with only AR<sub>alone</sub> in proximal 5 kbp to TSS and random genes. (G) Snapshot representation (from *top* to *bottom*) of the AR binding peak profile (defined by ChIP-seq), AR self-ligation peak profile (defined by ChIA-PET), AR-associated chromatin interaction profile (defined by ChIA-PET), transcriptional rate profiles (defined by GRO-seq), and steady-state mRNA level profiles (defined by RNA-seq) associated with the androgen-regulated gene, *FKBP5*.



**Figure 2.** ERG binding is involved in AR-associated chromatin looping. (A) Bar chart showing the top 10 motifs enriched at interacting ARBS ( $AR_{anchor}$ ) compared to noninteracting ARBS ( $AR_{alone}$ ). There is no difference in AR motif enrichment between the two sets. (B) Fraction of  $AR_{anchor}$  with colocalized ERGBS compared to  $AR_{alone}$ . (C) *Left:* Heat map depiction of the AR and ERG ChIP intensity ( $\pm 5$  kbp) centered at AR anchor pairs. Each row is one AR loop represented by two anchor regions, and AR loops are classified into seven categories based on the occupancy status of AR and ERG at both anchors. *Right:* Pie-chart summarizing the fraction of different categories. (D) Fraction of interacting ERGBS ( $ERG_{anchor}$ ) with colocalized ARBS compared to noninteracting ERGBS ( $ERG_{alone}$ ). (E) Snapshots depicting the interconnectivity of AR/ERG-associated chromatin interactions at model androgen-regulated genes.

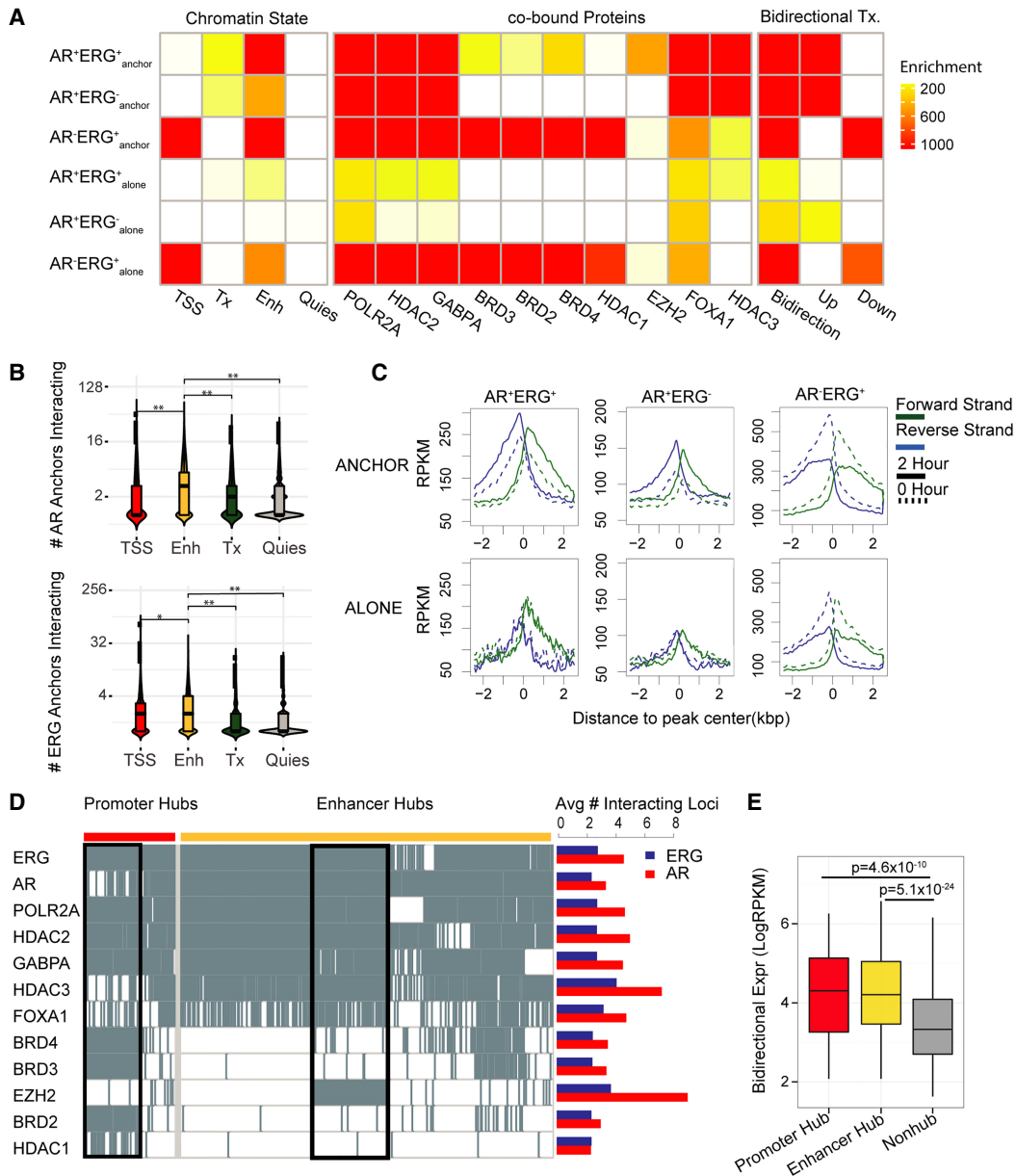
*SLC15A2-ILDR1* gene cluster (Fig. 2E). Taken together, these observations suggest AR and ERG can function together through complex chromatin looping to regulate gene transcription.

**Distinct genomic signatures demarcating AR- and ERG-associated chromatin looping anchors**

To better understand how AR and ERG function together in long-range chromatin interactions to regulate gene transcription, we first examined the genomic features of ARBSs and ERGBSs by classifying them into six specific categories based on their co-occupancy status and association with chromatin interactions. We utilized ChromHMM (Ernst and Kellis 2012) with six distinct histone marks (H3K36me3, H3K4me1, H3K27ac, H3K4me3, H3K27me3, H3K9me3) to define the various chromatin states (Quiescent, non-transcribed regions with very little epigenetic signal [Quies], Transcribed region [Tx], Active Promoter [TSS], and Active Enhancer [Enh]) associated with the different ARBS and ERGBS categories. From this analysis (Fig. 3A, left panel), we found AR preferentially cobinds with ERG at active enhancers with long-

range chromatin interactions ( $AR^+ERG^+_{anchor}$ ). Active enhancers containing AR or ERG showed the highest number of long-range chromatin interactions compared to other chromatin states (Fig. 3B). These observations demonstrate the role of AR and ERG at enhancers in coordinating the activity of multiple regulatory regions in gene transcription.

Apart from ERG, a plethora of other transcriptional coregulators, including histone deacetylases (HDACs), bromodomain-containing proteins (BRDs), EZH2, and GABPA, function with AR to mediate gene transcription in prostate cancer cells (Chng et al. 2012; Asangani et al. 2014; Sharma et al. 2014). Accordingly, we examined the potential involvement of these transcriptional coregulators in the AR-ERG co-associated chromatin interaction network (Supplemental Table S7). As shown in Figure 3A (middle panel), we identified three distinct groups of coregulators associated with different categories of the AR-ERG transcriptional network. The first group (FOXA1, EZH2, and HDAC3) is enriched at  $AR^+ERG^+_{anchor}$  sites, the second group (HDAC1, BRD2, BRD3, and BRD4) binds with ERG in the absence of AR ( $AR^-ERG^+_{anchor}$  and  $AR^-ERG^+_{alone}$  sites), and the third group (POLR2A, HDAC2, and GAPBPA) is



**Figure 3.** Regulatory signatures of the AR and ERG interactome in prostate cancer. (A) Dissecting AR/ERG binding sites into six categories based on AR/ERG binding status and whether the binding sites associate with either AR loops or ERG loops. The *left* heat map presents enrichment of different chromatin states in the six categories of AR/ERG binding. The *middle* heat map presents enrichment of cotranscription factor ChIP-seq peak regions in VCaP cells. The three columns of the *right* heat map present enrichment of regions with bidirectional transcription 2 h after DHT treatment, with increasing bidirectional transcription in the *middle* column and decreasing bidirectional transcription on the *right*. The enrichment was computed as the negative log binomial *P*-value of the overlapping fraction of peaks in a given category (row) with the given annotation feature (column). The ENCODE combined DNase peaks (open chromatin) overlapping fractions are used as the null distribution. (B) Distribution of the number of interacting anchors comprising four different chromatin states in the AR anchored network (*top*) and ERG network (*bottom*). The Wilcoxon rank-sum test was applied to test if the number of anchors in the enhancer state is higher than other chromatin states. (\*) *P*-value =  $1.6 \times 10^{-7}$ , (\*\*) *P*-value <  $2.2 \times 10^{-16}$ . (C) GRO-seq profile around six categories of AR/ERG binding sites. The forward strand GRO-seq signal is presented in green and the reverse strand in blue. The dashed line represents the GRO-seq signal before DHT treatment, and the solid line represents the GRO-seq signal 2 h after DHT treatment. (D) *Left*: Binary heat map representation of the distribution of listed transcription factor binding sites in promoter and enhancer hub regions. Each column represents one genomic region, with rows representing TF binding sites. The black boxes illustrate two TF clusters in promoter hub regions and enhancer hub regions. *Right*: Bar plot shows the average number of interacting loci for the AR (red) or ERG (blue) anchor regions with different TF binding. (E) Box plot showing the average bidirectional expression level (2 h after DHT treatment) of promoter hub regions (red), enhancer hub regions (yellow), and nonhub anchor regions (gray). The bidirectional expression level is defined by the minimum reads per kilobase per million mapped reads (RPKM) of two strands.

enriched in categories with AR chromatin looping (but not AR<sup>+</sup>ERG<sup>+</sup><sub>alone</sub> and AR<sup>+</sup>ERG<sup>-</sup><sub>alone</sub>), which may indicate AR needs chromatin looping to recruit other proteins like POLR2A (Supple-

mental Table S8). Notably, FOXA1 binding is enriched at both AR<sup>+</sup>ERG<sup>+</sup><sub>anchor</sub> and AR<sup>+</sup>ERG<sup>-</sup><sub>anchor</sub>. This observation could be attributed to the indirect binding of FOXA1 to chromatin, since

the FOXA1 motif shows similar enrichment in AR alone binding sites (Supplemental Fig. S10).

In addition to the chromatin state and transcriptional coregulator occupancy, bidirectional transcription (e.g., eRNA) has also been suggested to be associated with active enhancers (Core et al. 2014) and is a distinguishing marker for AR-associated chromatin interactions (Wang et al. 2011); however, evidence thus far has been limited to only a few AR loci. To extend this finding, we integrated GRO-seq information with AR chromatin interaction data. In general, a clear androgen-inducible bidirectional transcription signature can be seen at ARBSs with long-range interactions after DHT treatment (AR<sup>+</sup>ERG<sup>+</sup><sub>anchor</sub> and AR<sup>+</sup>ERG<sup>-</sup><sub>anchor</sub>, top panel, Fig. 3C), but not at ARBSs without long-range interactions (AR<sup>+</sup>ERG<sup>+</sup><sub>alone</sub> and AR<sup>+</sup>ERG<sup>-</sup><sub>alone</sub>, bottom panel, Fig. 3C). In contrast, AR<sup>-</sup>ERG<sup>+</sup> sites exhibited a decrease in GRO-seq signal upon androgen stimulation regardless of chromatin interactions (third column, Fig. 3C), for which we hypothesize that an increase in ERG binding with transcriptional corepressors (e.g., HDAC1) at promoters might be one of the mechanisms that result in gene repression upon androgen stimulation (Chng et al. 2012). Taken together, our results show that AR and ERG cobinding sites involved in long-range chromatin interactions (AR<sup>+</sup>ERG<sup>+</sup><sub>anchor</sub>) are associated with functional enhancer signatures (e.g., enhancer state, co-TF binding, bidirectional Tx) compared to those binding sites that do not participate in long-range chromatin interactions.

We next sought to check if the number of chromatin interactions would also affect functional enhancer signatures. For this, we defined the top 1% of AR and/or ERG anchors with the highest number of distinct chromatin interactions as interaction hub regions. These interaction hub regions were further classified as promoter or enhancer hubs based on their associated chromatin states. From this analysis, we found that, in addition to AR and ERG, other co-TFs, including POLR2A, HDAC2, and GABPA, are highly prevalent at both promoter and enhancer hubs (Fig. 3D; Supplemental Fig. S12). Coregulators BRD2/3/4 are enriched at promoter hubs while HDAC3 and EZH2 are preferred at enhancer hubs (Supplemental Fig. S13) and have a higher number of AR interactions than ERG interactions (Fig. 3D, right panel). We found EZH2, a subunit of the Polycomb repressive complex 2 (PRC2), specifically targeting enhancer hubs driven by AR and ERG binding (Supplemental Fig. S14), suggesting that PRC2 regulates those interaction hub regions, which is consistent with the previous model that ERG recruits PRC2 to inhibit AR activity (Yu et al. 2010). In addition, we found the expression of bidirectional transcripts was higher at interaction hubs of the AR-ERG interaction network versus non-hubs (Fig. 3E), suggesting a positive correlation between bidirectional expression and the degree of chromatin interactions. In summary, our findings show the interaction hubs of the AR-ERG interaction network are associated with functional signatures, including enhancer state, co-TF binding, and bidirectional transcripts.

### AR and ERG chromatin loops shape the transcriptional regulatory circuit in prostate cancer

To understand how the AR and ERG interactomes are integrated as components of the AR transcriptional network, we associated androgen-regulated genes with long-range chromatin interactions. In general, we found the anchor regions of AR-ERG loops (AR<sup>+</sup>ERG<sup>+</sup> loop) and to a lesser extent AR-only loops (AR<sup>+</sup>ERG<sup>-</sup> loop) are enriched for androgen up-regulated genes (Fig. 4A; Supplemental Fig. S15). Moreover, AR<sup>+</sup>ERG<sup>+</sup> loops tend to be asso-

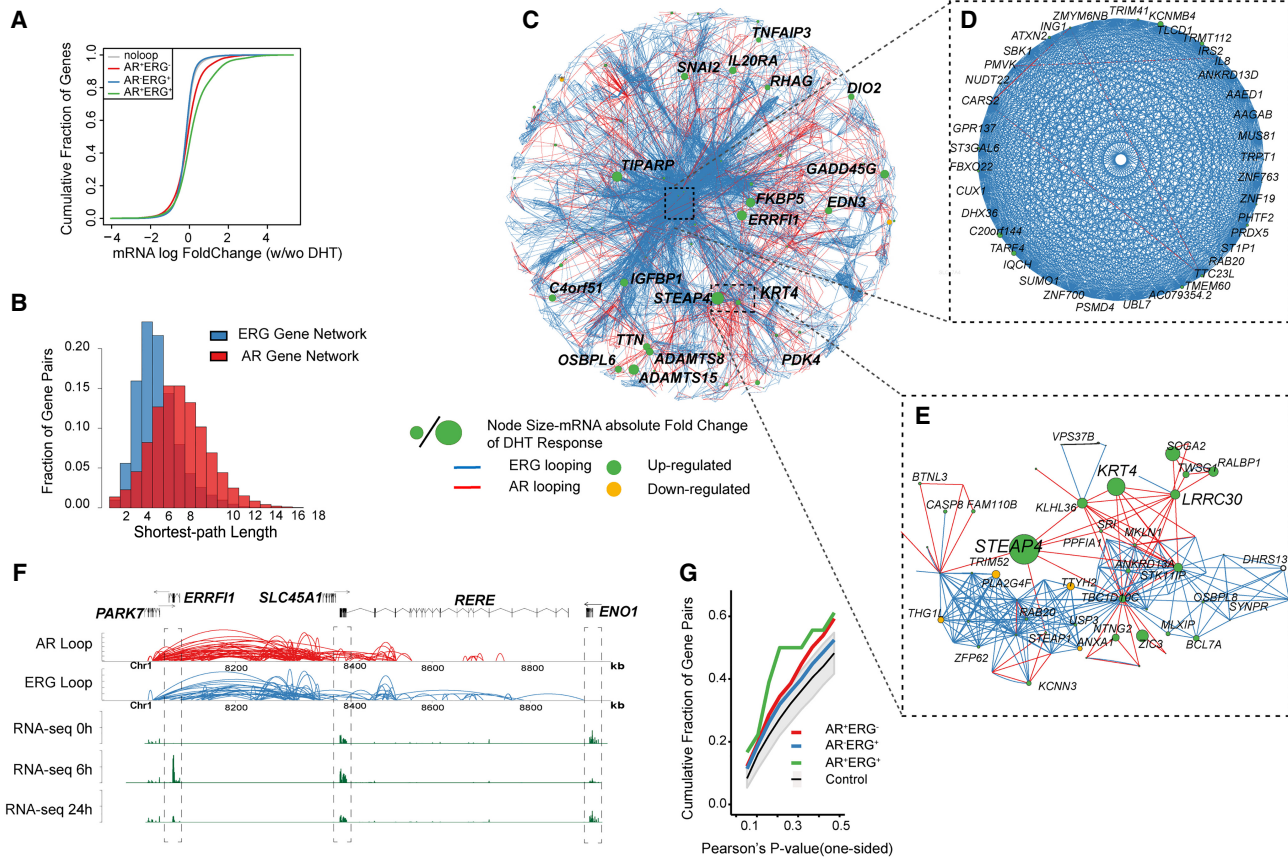
ciated with genes up-regulated at early time points (6 h vs. 0 h) after androgen stimulation, as well as late (24 h vs. 6 h) down-regulated genes (Supplemental Fig. S15A,B). On the other hand, AR<sup>+</sup>ERG<sup>+</sup><sub>alone</sub> sites preferentially associate with down-regulated genes at both early and late time points (Supplemental Fig. S15A, B). Although these observations suggest that AR<sup>+</sup>ERG<sup>+</sup> loops associate with the cumulative transcription level of their target genes, we could not find significant evidence for those loops in association with the change in pause-index at the target genes (Supplemental Fig. S16). This may indicate AR's role in transcription initiation over a role in transcription elongation.

Network architecture has been demonstrated to affect the robustness of a regulatory network (Zamal and Ruths 2012; Winterbach et al. 2013), leading to our interest in the topology of the gene network mediated by AR and ERG. We therefore constructed a representation of the AR and ERG gene networks by connecting pairs of genes if their promoters are linked through AR or ERG long-range interactions (AR<sup>+</sup>ERG<sup>-</sup> and AR<sup>-</sup>ERG<sup>+</sup>). Our results show that the ERG-mediated gene network is dense and highly connected (average path length is 4) (Fig. 4B,C) in contrast to the AR-mediated gene network (average path length is 7) (Fig. 4B,C). This observation could be reflective of a stable ERG gene transcriptional regulatory network (Fig. 4D) that might be more resistant to androgen stimulus (requiring a significantly higher androgen signal to perturb the network) as compared to a more dynamic AR-mediated gene transcriptional regulatory network (Fig. 4E), which is easily amendable to stimulus. In addition, we found that androgen-responsive genes (green nodes in Fig. 4C–E) were preferentially located in the AR-mediated gene network (e.g., *STEAP4* and *KRT4*) (Fig. 4E). Taken together, these observations suggest ERG may play a role in isolating a set of genes from the androgen effect.

However, when we examined the AR<sup>+</sup>ERG<sup>+</sup> coregulated gene network, which consists of 169 gene pairs (Supplemental Table S9) that are linked via AR<sup>+</sup>ERG<sup>+</sup> loops, we found it has a higher positive gene expression correlation compared to AR<sup>+</sup>ERG<sup>-</sup> or AR<sup>-</sup>ERG<sup>+</sup> loops (Fig. 4G). For instance, *ERRFI1* and *ERE*, two genes which are 300 kb apart, are linked extensively via AR<sup>+</sup>ERG<sup>+</sup> loops and their expression is highly coordinated across different time points after androgen induction, with the highest expression at 6 h (Fig. 4F). In contrast, *ENO1*, a nearby gene, which is not connected by AR<sup>+</sup>ERG<sup>+</sup> loops, shows a different expression pattern. Collectively, our results support a combinatorial association whereby AR and ERG chromatin loops govern androgen-regulated transcriptional output more than AR alone. Genes that are regulated only by ERG appear to be insensitive to androgen stimulation or potentially require a larger stimulus to respond.

### Crosstalk between the AR-ERG interactome and long noncoding RNAs in prostate cancers

The importance of lncRNAs in prostate cancer progression has been highlighted recently (Prensner et al. 2011, 2013; Chen et al. 2018; Lingadahalli et al. 2018). Since AR and ERG are also critical transcriptional regulators in prostate cancer (Chen and Sawyers 2010; Yu et al. 2010; Chng et al. 2012; Chng and Cheung 2013), we postulated their potential involvement in regulating lncRNAs. Indeed, analysis of the GRO-seq and ChIA-PET data sets shows that AR-ERG co-associated chromatin loops are highly correlated with androgen up-regulated lncRNA transcripts, particularly those that are up-regulated at the early time points after DHT stimulation (Fig. 5A). Next, we examined the clinical relevance of our finding by comparing with lncRNAs that are differentially



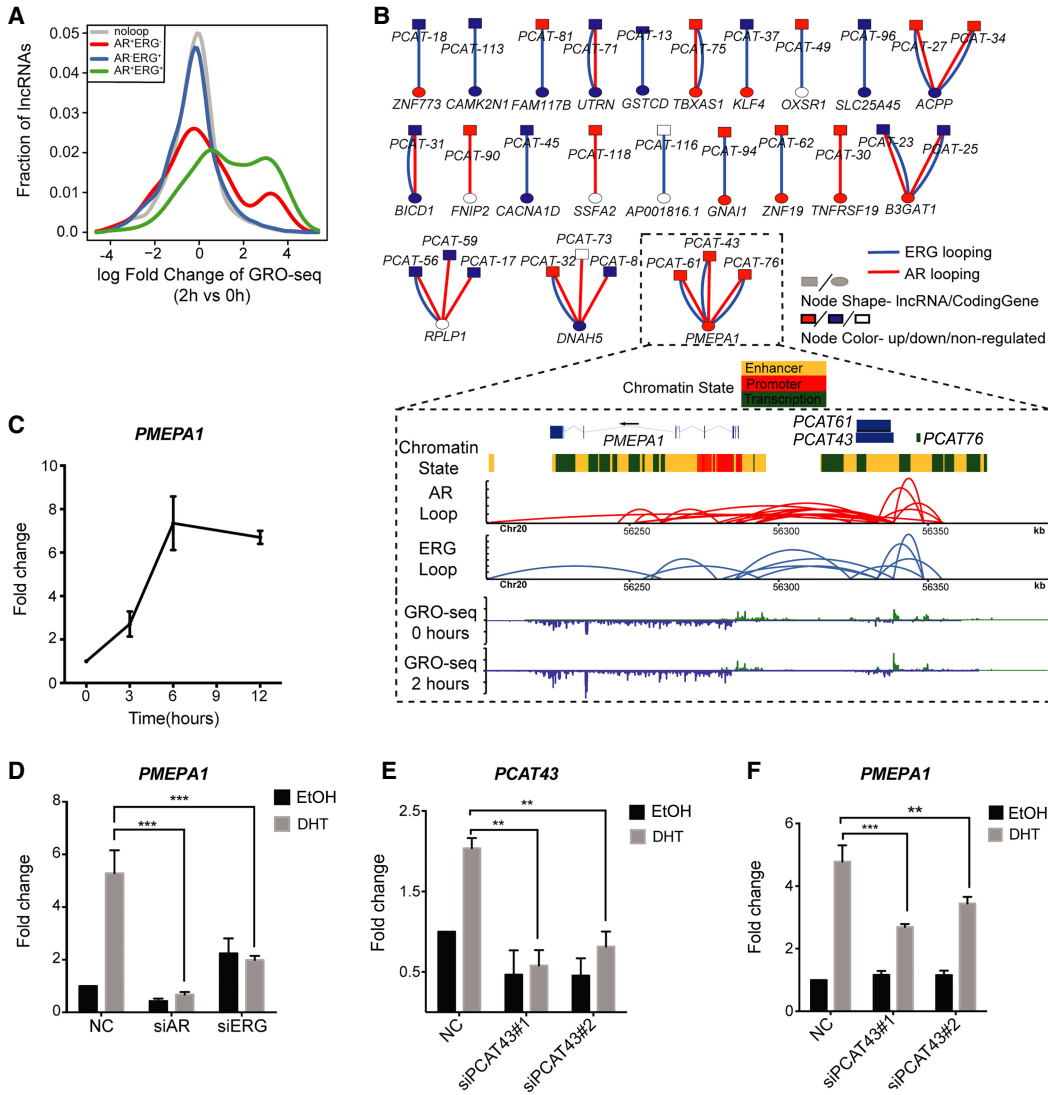
**Figure 4.** Transcriptome network defined AR and ERG interactome in prostate cancer. (A) Distribution of mRNA expression changes at 0 and 2 h after DHT treatment. mRNA changes are classified into four categories depending on the association with different types of loops. The x-axis shows the log fold change of the gene expression by RNA-seq data, and the y-axis is the cumulative fraction of genes in the given gene categories. (B) The distribution of shortest path lengths between any two genes in the AR or ERG loop defined gene networks. (C) Cytoscape (Shannon et al. 2003) map of the largest connected component of the gene network defined by both AR and ERG associated loops. Each node is a gene, and the node size represents the absolute log fold change of the mRNA expression at 0 and 2 h after DHT treatment. The edge color represents either AR looping (red) or ERG looping (blue). (D) A zoomed view of a core gene network showing 39 genes highly inter-connected by ERG loops and a few AR loops. (E) Zoomed in subnetwork view of the neighborhood of genes with *STEAP4*. (F) A browser track view of genes linked by AR-ERG co-associated looping. From top to bottom: the gene track, AR looping track, ERG looping track, RNA-seq signal at 0 h, RNA-seq signal at 6 h, and RNA-seq signal at 24 h after DHT treatment. (G) Cumulative fraction of gene pairs against the Pearson's correlation  $P$ -value of their expression across four time points after DHT treatment (based on microarray data). The  $P$ -value is one-sided and the alternative hypothesis is that the correlation is greater than zero. The green curve is for gene pairs linked by AR-ERG co-associated looping, the red curve is for gene pairs linked by AR looping only, and the blue curve is for gene pairs linked by ERG loops only. The gray color band denotes the 95% confidence interval of the same number of randomly selected gene pairs as in the AR-ERG co-association.

expressed between normal and cancer prostate tissue samples (Prensner et al. 2011). We found more than half of these lncRNAs have overlap with AR and/or ERG looping, with 36% overlapping with both types of looping (Supplemental Fig. S17). The connection between lncRNAs at the DNA level and coding genes suggests the possibility of a regulatory interaction due to spatial proximity (Fig. 5B; Supplemental Table S10). From these observations, we hypothesized that chromatin looping might be one of the mechanisms for facilitating crosstalk between lncRNAs (or transcription from enhancers) and their target coding genes. To explore this hypothesis further, we examined the *PMEPA1* locus, which harbors three clinically relevant lncRNAs (*PCAT43*, *PCAT61*, and *PCAT76*) (Prensner et al. 2011) that are all linked to the *PMEPA1* (prostate transmembrane protein, androgen induced 1) gene by AR<sup>+</sup>ERG<sup>+</sup> loops (Fig. 5B). We first established that *PMEPA1* is activated by androgen in a time-dependent manner and regulated by AR and ERG (Fig. 5C,D). Next, we examined the effect of lncRNA depletion on *PMEPA1* gene expression. We had difficulties knock-

ing down *PCAT76* (Supplemental Fig. S18), and thus we were not able to determine the effect of *PCAT76* on *PMEPA1* gene transcription. However, depleting *PCAT43/PCAT61* significantly reduced the androgen-mediated activation of *PMEPA1* (Fig. 5E,F), suggesting that these lncRNAs are important for regulating *PMEPA1* gene expression. In summary, our results reveal a complex crosstalk between lncRNAs and AR-ERG chromatin loops in transcriptional regulation in prostate cancer.

#### Association of GWAS noncoding SNPs from prostate cancer patients with AR-ERG chromatin interactions

Genome-wide association studies (GWASs) have identified over 100 potential risk loci for prostate cancer, with most located in non-coding regions of the genome (Berndt et al. 2015; Hoffmann et al. 2015; Kim et al. 2015; Wang et al. 2015). Given the importance of AR and ERG in prostate cancer etiology (Chen and Sawyers 2010; Chng et al. 2012), we hypothesized that some of these



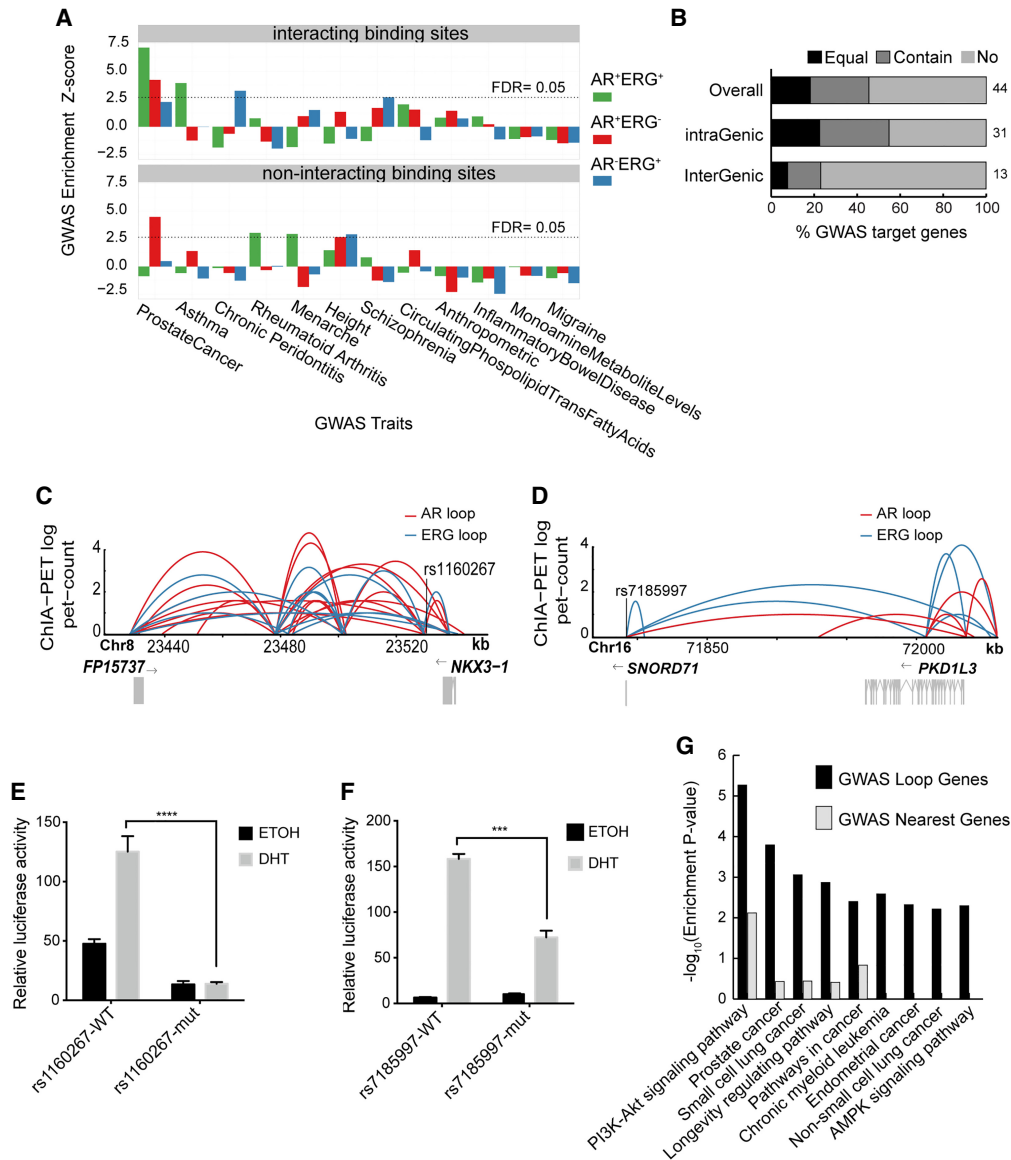
**Figure 5.** Functional relationship between lncRNA and chromatin loops in the AR-ERG transcriptional network. (A) Distribution of lncRNA expression change from 0 to 2 h after DHT treatment as measured by GRO-seq. Genes were classified into four categories depending on their association with different loop types. The x-axis shows the log fold change of the lncRNA expression, and the y-axis is the fraction of genes in the given lncRNA categories. (B) Bipartite graph linking clinically relevant lncRNAs to coding genes by AR/ERG looping. The node shape indicates the molecule type (lncRNA or coding gene), and the node color represents a more than 1.5-fold expression increase (red) or decrease (blue) after DHT treatment. Lower panel: An example showing three clinically relevant lncRNAs linked to the gene *PMEPA1* by AR-ERG co-associated looping. Snapshot representation of (from top to bottom) gene track and ChromHMM track, the ERG and AR loops (defined by ChIA-PET), and transcriptional rate profiles before and after DHT (defined by GRO-seq). (C) Graph showing the time-dependent activation of *PMEPA1* in VCaP cells after treatment with 10 nM DHT. (D) Bar graph showing the expression of *PMEPA1* in VCaP cells transfected with siNC, siAR, or siERG and treated with DHT or EtOH for 6 h. (E) Transcribed from the same genomic region, *PCAT43* and *PCAT76* transcripts are indistinguishable from each other. Bar graph showing the efficiency of siRNA-mediated knockdown of *PCAT43* in VCaP cells. (F) Graph showing the effect of *PCAT43* knockdown on the androgen regulation of *PMEPA1*. VCaP cells transfected with siPCAT43 were treated with DHT or EtOH for 6 h.

noncoding risk loci may function through AR and ERG co-associated chromatin loops. In support of this, we found AR+ERG+<sub>anchor</sub> sites significantly enriched in prostate cancer GWAS SNPs (permutation test,  $P$ -value =  $6.8 \times 10^{-14}$ ) (Fig. 6A; Supplemental Fig. S19). Moreover, performing the same analysis across 11 other GWAS studies showed that the enrichment of SNPs in AR+ERG+<sub>anchor</sub> sites is specific to prostate cancer (Fig. 6A; Supplemental Fig. S19). These observations suggest that GWAS noncoding variants may contribute to the risk of prostate cancer by altering AR-ERG cobinding and subsequent chromatin interactions.

Using this novel set of chromatin interaction information, we next linked prostate cancer GWAS SNPs to target genes through AR/

ERG chromatin loops (Supplemental Table S11). Notably, only 22% of target genes that are defined by AR/ERG chromatin loops are nearest genes associated with the GWAS SNPs (Fig. 6B), implying that, for most risk loci, finding target genes requires chromatin looping information. Next, we examined whether GWAS SNPs in AR/ERG binding sites are functionally active. For this, we identified three significant prostate cancer GWAS SNPs (rs1035545, rs7185997, and rs1160267) (Al Olama et al. 2014) that are located within AR+ERG+<sub>anchor</sub> sites. We then cloned a 500- to 1000-bp region encompassing the SNPs upstream of a luciferase reporter. Two (rs1160267 and rs7185997) out of the three SNP-containing regions have significant AR/ERG binding activity (Supplemental





**Figure 6.** Noncoding GWAS SNPs contribute to the risk of prostate cancer through AR/ERG chromatin interaction. (A) Graph showing the enrichment of different classes of AR/ERG binding sites in diverse GWAS traits. *Upper panel:* Examined regions with AR/ERG chromatin looping including AR-ERG cobinding sites (green), AR only binding sites (red), and ERG only binding sites (blue) with overlapping GWAS top loci. *Lower panel:* Similar to the upper panel but considered only regions without AR/ERG chromatin looping. (B) The fraction of prostate cancer GWAS loci in either intra-genic regions or inter-genic regions whose targets (defined by AR/ERG looping) match the nearest gene: The nearest gene is the only target gene (Equal), the nearest gene is one of the target genes (Contain), and the nearest gene is not a target gene (No). (C) Prostate cancer associated GWAS SNP rs1160267 linked to the *NKX3-1* gene through AR/ERG chromatin looping. (D) Prostate cancer associated GWAS SNP rs7185997 linked to *PKD1L3* gene through AR/ERG chromatin looping. (E) Luciferase assay activity before and after mutating the GWAS SNP rs1160267, which is located in the enhancer region of the *NKX3-1* gene. (F) Luciferase assay activity before and after mutating the GWAS SNP rs7185997, which is located in the enhancer region of the *PKD1L3* gene. (G) A list of the top 10 pathways enriched in prostate GWAS target genes defined by either using our chromatin looping data or the nearest gene method.

Fig. S20). GWAS SNP rs1160267 is in an enhancer region linked to the *NKX3-1* gene through AR-ERG looping (Fig. 6C), whereas rs7185997 is located within the *APIG1* gene and is connected to the *PKD1L3* gene also through AR-ERG looping (Fig. 6D). Sanger sequencing of these regions confirmed that VCaP cells contain both of these SNPs. Site-directed mutagenesis of both SNPs disrupted AR/ERG binding activity (Fig. 6E,F), indicating that these variants likely affect AR-ERG co-activation of *NKX3-1* and *PKD1L3*. Taken together, our results indicate that prostate GWAS SNPs may disrupt distal target genes through AR/ERG-mediated chromatin looping.

Finally, we performed pathway enrichment analysis (Kuleshov et al. 2016) on GWAS-associated target genes in prostate cancer that are either defined by spatial proximity (AR-ERG chromatin loop) or by linear proximity (nearest genes). Compared to linear proximity, GWAS target genes that are defined by our ChIA-PET interactions (Supplemental Table S12) are much more enriched in many pathways, including the PI3K-AKT signaling pathway (Fig. 6G), which previously has been implicated in prostate cancer from various preclinical studies (Majumder and Sellers 2005; Edlind and Hsieh 2014; Lee et al. 2015). Taken together, our results

demonstrate the power of integrating GWAS and long-range chromatin interaction information for revealing the convergence of signals that lead to pathways involved in prostate cancer. Moreover, our AR and ERG interactome data is an important resource for researchers who are interested in identifying target genes for prostate cancer associated noncoding mutations and exploring the molecular mechanisms of those mutations.

## Discussion

The characterization of a transcription factor's activity would be incomplete without any information on its higher-order chromosomal organization (Schoenfelder et al. 2010; Göndör and Ohlsson 2009; Schneider and Grosschedl 2007). Thus, to build the most comprehensive regulatory network to date in prostate cancer, we generated a large scale molecular experimental data set that included 3D chromatin interaction data (AR and ERG ChIA-PET), multiple time point transcriptome data (GRO-seq, RNA-seq), and DNA sequencing data (G-PET for structural variations). Overall, we have mapped and characterized in detail the general features of the AR interactome and implicated the ERG interactome as a cooperative part of the AR transcriptional network in prostate cancer cells. To visualize the long-range chromatin interactions and associated genomic data from this study, we have created a genome browser, which is available at the following link: <http://biogpu.ddns.comp.nus.edu.sg/basic2/basic/public/zzz/hg19/>.

In this work, we observed distinct functional signatures for the different classes of binding sites defined by AR and ERG, with or without chromatin interactions. From our AR and ERG long-range interaction network, we identified *cis*-regulatory elements that displayed high interconnectivity, serving as network hubs. In particular, we found interaction hub regions colocalized with the binding of other transcription factors (e.g., HDAC3 and EZH2), bidirectional transcripts (e.g., eRNA), and prostate cancer-associated lncRNAs. Herein, we provide the first evidence to show that this topological connectivity in the AR and ERG interaction network might be an indicator of functional importance.

From our findings, we observed that highly interconnected interaction hub regions drive gene/eRNA/lncRNA expression in prostate cancer after androgen treatment. Moreover, these hub regions are occupied by histone remodeling factors and lncRNAs. Therefore, we think the interaction hubs might serve as potential targets for genetic editing methods such as CRISPR-Cas9 or cell therapies for prostate cancer patients, as they appear to alter the androgen transcriptional response in cancer cells. The importance of these promoter/enhancer hubs can be further validated with interactome data for other transcription factors, including ESR1 (Fullwood et al. 2009), POLR2A (Li et al. 2012; Zhang et al. 2013), Cohesin (DeMare et al. 2013), and CTCF (Handoko et al. 2011). Future work could examine whether the relationship among interaction hubs, lncRNAs, and histone remodeling factors can be extended to other interaction networks.

In a recent study, Rosenfeld and colleagues showed *PCGEM1*, an androgen-regulated lncRNA, is important in establishing AR-associated chromatin loops in LNCaP cells (Yang et al. 2013; Parolia et al. 2015). Because of this, we attempted to examine the extent to which *PCGEM1* functions in regulating the genome structure of VCaP cells. We did this by overlapping our AR and ERG interactomes with *PCGEM1* binding sites previously defined by chromatin isolation by RNA purification (ChIRP-seq) (Yang et al. 2013). In general, we found a strong colocalization between *PCGEM1* and AR<sub>anchor</sub> in comparison to AR<sub>alone</sub> (Fisher's exact test;  $P$ -value  $< 2 \times$

$10^{-16}$ ) (Supplemental Fig. S21) but not with ERG loops. However, upon experimental validation, we found that *PCGEM1* expression in VCaP cells is extremely low compared to LNCaP cells and is not regulated by AR or ERG (Supplemental Fig. S22A,B). Additionally, siRNA-mediated knockdown of *PCGEM1* was unsuccessful (Supplemental Fig. S22C). Hence, at this stage, we speculate that a different lncRNA other than *PCGEM1* may be facilitating AR and ERG looping in VCaP cells.

From this study, we also discovered that the connectivity of the AR-mediated gene network and the ERG-mediated gene network are very different, although there are common genes between the two networks. Specifically, we found that the AR-mediated network is sparser than the ERG-mediated network and androgen-responsive genes are depleted in the dense core of the ERG-mediated gene network. However, genes that are linked by AR and ERG co-associated chromatin loops demonstrated a strong transcriptional expression correlation in response to androgen, indicating a possible cotranscription of interconnected genes.

Finally, our work demonstrated the clinical usefulness of the AR and ERG chromatin looping information in associating differentially expressed lncRNAs in patient tumors and in prostate cancer GWAS SNPs with coding genes in close spatial proximity. For example, the prostate cancer GWAS SNP rs9364554 (Hoffmann et al. 2015) (GWAS  $P$ -value =  $6 \times 10^{-12}$ ) is located in the intron of the *SLC22A3* gene within an AR<sup>+</sup>ERG<sup>+</sup> loop anchor (Supplemental Fig. S23). From our data, it appears that rs9364554 is also connected through AR-ERG looping to the *SLC22A2* gene, which is 130 kb away. Thus, our data suggest that not one but two genes are potential targets of this GWAS SNP. In support of our observation, rs9364554 has been reported as an eQTL for both of these genes (Thibodeau et al. 2015).

Our analysis of GWAS-significant SNPs also revealed that an enrichment of AR-ERG cobinding sites is involved in chromatin interactions in prostate cancers and that target genes linked by AR and ERG chromatin loops are more highly enriched in prostate cancer pathways as compared to a simple nearest gene approach. Moreover, our analysis of the interactions between lncRNAs and protein coding genes at the DNA level suggests a potential method for predicting the target genes of lncRNAs through chromatin interactions. Taken together, our work has resulted in a novel way for understanding the possible biological functions of prostate cancer lncRNAs or GWAS SNPs through the coding genes.

In summary, our work has significantly enhanced our mechanistic insight of hormone-regulated gene transcription in prostate cancer and at the same time provided many novel data sets including the chromatin interactomes of AR and ERG which we believe are highly valuable to the research community. In addition, our work provides a new analytic framework for understanding long-range interactions of multiple transcription factors and a methodology that can be applied broadly, beyond cancer research.

## Methods

### Cell culture

VCaP prostate cancer cells (American Type Culture Collection) were cultivated in DMEM with 10% fetal bovine serum (FBS; Invitrogen) at 37°C under 5% CO<sub>2</sub>. To deprive the prostate cancer cells of hormones prior to DHT (Tokyo Chemical Industry) stimulation, VCaP cells were first grown for 24 h in phenol red-free DMEM with 10% charcoal-dextran-treated fetal bovine serum (CDFBS; HyClone).

### siRNA studies

A double knockdown approach was utilized for siRNA studies and was performed as described previously (Lingadahalli et al. 2018). In brief, VCaP cells were transfected consecutively with 5 and 10 nM of dsRNA (IDT) with a gap of 24 h between each transfection using Lipofectamine RNAi Max (Invitrogen) following the manufacturer's protocol. After the second round of transfection, the media was changed to phenol red-free DMEM with 10% CDFBS and hormone deprived for another 24 h, followed by treatment with 10 nM of DHT or EtOH for 6 h. Two dsRNAs were designed for each target and paired with a nontargeting control (siNC).

### Construction of reporter plasmids and luciferase assay

A 600- to 700-bp region around the GWAS SNP was amplified from VCaP genomic DNA with homologous recombination primers such that the final amplified product contained KpnI and XhoI restriction endonuclease sites. The amplified products were cloned into the pGL4-TATA vector (Lin et al. 2007) by homologous recombination using the Quick ligation kit (bimake.com) according to the manufacturer's protocol.

VCaP cells were cotransfected with 250 ng of reporter construct and 2.5 ng of *Renilla* using Lipofectamine 3000 (Invitrogen) according to the manufacturer's protocol. After 24 h of transfection, the media was changed to phenol red-free DMEM with 10% CDFBS and hormone-deprived for another 24 h before treating with 10 nM of DHT or EtOH for 24 h. Firefly and *Renilla* luciferase activities were assayed using the Dual Luciferase System kit (Promega) and VICTOR3 (PerkinElmer) according to the manufacturers' protocols. The relative reporter gene activity was obtained by normalizing the Firefly luciferase activity with the *Renilla* luciferase activity.

### Chromatin immunoprecipitation (ChIP) and ChIA-PET library construction

Androgen-stimulated VCaP cells were first fixed with 2 mM DSG (Pierce, Thermo Fisher Scientific) for 45 min prior to a 10 min fixation with 1% formaldehyde (Sigma-Aldrich). Harvested cells were lysed and the chromatin sonicated into a length of ~500 bp. The fragmented chromatin was first precleared with rabbit IgG (Santa Cruz Biotechnology [SCBT], sc-2027x) for roughly 4 h before overnight immunoprecipitation with the corresponding AR/ERG antibodies. Dynabeads Protein G (Life Technologies) was utilized for the pull-down. Captured DNA was eluted and de-crosslinked at 65°C for ~16 h. Anti-AR (SCBT, sc-815x) and anti-ERG (SCBT, sc-353) antibodies were used for AR and ERG ChIP, respectively. ChIA-PET library construction for sequencing was performed as previously described (Fullwood et al. 2009). Two libraries, CHV029 and CHV031, were generated for AR and ERG, respectively.

### Genomic DNA extraction and long-span paired-end-tag sequencing (G-PET)

High-quality genomic DNA was extracted from VCaP cells using the DNeasy kit (Qiagen) according to the manufacturer's instructions. A long-span paired-end-tag sequencing library was constructed as previously described (Hillmer et al. 2011). One SOLiD paired-end read library, DHV001, was generated.

### RNA extraction and RNA-sequencing

VCaP cells were harvested in TRI-reagent (Sigma-Aldrich). Total RNA was purified and obtained using the PureLink RNA Mini kit (Invitrogen). RNA sequencing libraries were prepared as described

previously (Xu et al. 2013). Three libraries were generated (RHV006, RHV007, RHV008) corresponding to 0, 6, and 24 h after DHT treatment.

### Global run-on sequencing (GRO-seq)

Nuclei were isolated from VCaP cells with or without DHT treatment. GRO-seq libraries were prepared from 10 million cells based on our previously published protocol (Core et al. 2008). After harvesting the cells, RNA polymerases were allowed to run-on for 5 min at 30°C (~100 bp) in the presence of sarkosyl and BrUTP. The RNA was then base hydrolyzed, end-repaired, and immunopurified with anti-BrdUTP-coated agarose beads thrice (SCBT, sc-32323ac). The affinity-enriched RNAs were then reverse transcribed, amplified, and PAGE purified for deep sequencing on the Illumina Genome Analyzer and HiSeq 2000. Two libraries, RHV001 and RHV002, were generated corresponding to 0 and 2 h after DHT treatment, respectively.

### Fluorescence in-situ hybridization

FISH was performed as described previously (Fullwood et al. 2009) with some modification. Briefly, VCaP nuclei were harvested by treating cells with 0.075M KCl for 15 min at 37°C and fixed with a fixative (methanol: acetic acid at 3:1) and mounted onto slides. For the BAC probes, the DNA was extracted from BACs and labeled with biotin or digoxigenin (DIG) by nick translation (ITS Science). The probes were then coprecipitated with 1 µg/µL of Cot1 DNA and salmon sperm DNA and resuspended in hybridization buffer at 5 ng/µL. Prior to hybridization, VCaP nuclei slides were treated with pepsin and dehydrated with a series of ethanol treatment (70%, 80%, and 100%). After the probes were hybridized in a humid chamber at 37°C overnight, the slides were treated with avidin-conjugated fluorescein isothiocyanate (FITC) for biotinylated probes and anti-DIG-Rhodamine for DIG-labeled probes and visualized under a fluorescence microscope (Nikon Eclipse 80i) to obtain the figures in the paper. Detailed information on the obtaining intra-chromosomal interactions and inter-chromosomal interactions are provided in [Supplemental Methods](#).

### G-PET data processing

The SOLiD paired-end reads generated from libraries (DHV001\_1 and DHV001\_2) were mapped to reference genome hg19 using the SOLiD mapper provided by Life Technologies. The structural variations (deletions, inversions, insertions, tandem, and translocations) were detected using the SVGenModule program (Hillmer et al. 2011). In addition, to detect the amplified regions in VCaP, we partition the genome into a series of 10-kbp bins, count the gPET read count in each bin, and compute the outlier bins (with  $P < 0.01$ ) as amplified regions assuming the read count per bin follows the normal distribution.

### RNA-seq data processing

Illumina paired-end reads generated from RHV006, RHV007, and RHV008 were mapped to the reference genome hg19 using TopHat (Trapnell et al. 2012). To compute the gene expression for different time points, we used HOMER (Heinz et al. 2010) with the command "analyzeRNA.pl rna hg19 -strand both -count genes". Differential expressed genes are defined as genes with a fourfold expression change between any two time points (three time points in total). The use of the reference genome hg19 versus GRCh38 for mapping is not likely to have significantly affected our conclusions (see [Supplemental Methods](#)).

## GRO-seq data processing

The raw read data were mapped to the reference genome hg19 using BatMis (Tennakoon et al. 2012), and the coverage profile along the genome was generated using HOMER (Heinz et al. 2010) and normalized by the sequencing depth of each library. The expression level and pausing index of each RefSeq gene were quantified by HOMER (Heinz et al. 2010) using the command “analyzeRNA.pl rna hg19 -pausing 500 -count genes”. To define pausing regulated genes, we chose genes with a gene body length longer than 1000 bp and with a pausing index change (increase or decrease) of more than twofold after DHT treatment. The de novo transcripts were called by combining two time points from the GRO-seq data and using the HOMER (Heinz et al. 2010) “find peak -groseq” command. LincRNA transcripts were defined as de novo transcripts that do not overlap the coding genes in GENCODE V16.

## ChIA-PET data processing

ChIA-PET sequence reads were processed as described previously (Li et al. 2012) with some modifications using the ChIA-PET Tool (Li et al. 2010). To avoid artifacts due to structure variations, we combined the SV calling result from our G-PET data and the published ChIP-PET data. We retained ChIA-PET interactions that do not overlap with those SVs and defined these as true long-range chromatin interactions that were used for follow-up analysis. The detailed work flow is described in Supplemental Methods.

## Bioinformatics analysis

The parameters that were used in this study to define an interaction anchor, binding sites with or without looping, target genes of an interaction binding site, transcriptional models from AR or ERG peaks and chromatin looping, promoter and enhancer region, and hub and nonhub region can be found in Supplemental Methods. Additional computational and statistical procedures including GWAS pathway enrichment analysis, gene network analysis, and Pearson’s correlation coefficient analysis for co-expression can also be found in Supplemental Methods.

## Data access

The ChIA-PET, GRO-seq, RNA-seq, G-PET, and Sanger sequencing data from this study have been submitted to the NCBI BioProject database (<https://www.ncbi.nlm.nih.gov/bioproject>) under accession number PRJNA238129.

## Acknowledgments

This work was supported in part by grants from the University of Macau (MYRG 2015-00196-FHS) and the Macau Science and Technology Development Fund (FDCT/023/2014/A1 and FDCT102/2015/A3) to E.C. K.R.C. was supported by an A\*STAR graduate scholarship. S.K.T. was supported by a NUS Graduate School for Integrative Sciences and Engineering Scholarship. G.L. was supported by the National Natural Science Foundation of China (Grant No. 91440114). Z.Z. was supported by the NIH/NHGRI grants (5-U01-HG007610-03 and 1-RF1-AG054012-01) awarded to M.K. Work from the J.T.L. lab was supported by NIH-GM25232 and NIH-U01 HL129958.

*Author contributions:* Z.Z., K.R.C., W.-K.S., and E.C. conceived and designed the project. Z.Z., H.H.D., S.C., G.L., and C.L.H. conducted the bioinformatics analysis with guidance from M.K. and W.-K.S. K.R.C., Z.C., M.H.L., H.M.P., Y.Y.S., L.J.C., S.K.T., and S.L. performed the experiments under the supervision of J.T.L.,

Y.R., X.R., and E.C. Z.Z., K.R.C., S.L., W.-K.S., and E.C. drafted the manuscript with input from all authors.

## References

- Al Olama AA, Kote-Jarai Z, Berndt SI, Conti DV, Schumacher F, Han Y, Benlloch S, Hazelett DJ, Wang Z, Saunders E, et al. 2014. A meta-analysis of 87,040 individuals identifies 23 new susceptibility loci for prostate cancer. *Nat Genet* **46**: 1103–1109. doi:10.1038/ng.3094
- Asangani IA, Dommeti VL, Wang X, Malik R, Cieslik M, Yang R, Escara-Wilke J, Wilder-Romans K, Dhanireddy S, Engelke C, et al. 2014. Therapeutic targeting of BET bromodomain proteins in castration-resistant prostate cancer. *Nature* **510**: 278–282. doi:10.1038/nature13229
- Berger MF, Lawrence MS, Demichelis F, Drier Y, Cibulskis K, Sivachenko AY, Shoner A, Esgueva R, Pflueger D, Sougnez C, et al. 2011. The genomic complexity of primary human prostate cancer. *Nature* **470**: 214–220. doi:10.1038/nature09744
- Berndt SI, Wang Z, Yeager M, Alavanja MC, Albanes D, Amundadottir L, Andriole G, Beane Freeman L, Campa D, Cancel-Tassin G, et al. 2015. Two susceptibility loci identified for prostate cancer aggressiveness. *Nat Commun* **6**: 6889. doi:10.1038/ncomms7889
- Chen Y, Sawyers CL. 2010. Coordinate transcriptional regulation by ERG and androgen receptor in fusion-positive prostate cancers. *Cancer Cell* **17**: 415–416. doi:10.1016/j.ccr.2010.04.022
- Chen X, Yang C, Xie S, Cheung E. 2018. Long non-coding RNA *GAS5* and *ZFAS1* are prognostic markers involved in translation targeted by *miR-940* in prostate cancer. *Oncotarget* **9**: 1048–1062. doi:10.18632/oncotarget.23254
- Chng KR, Cheung E. 2013. Sequencing the transcriptional network of androgen receptor in prostate cancer. *Cancer Lett* **340**: 254–260. doi:10.1016/j.canlet.2012.11.009
- Chng KR, Chang CW, Tan SK, Yang C, Hong SZ, Sng NY, Cheung E. 2012. A transcriptional repressor co-regulatory network governing androgen response in prostate cancers. *EMBO J* **31**: 2810–2823. doi:10.1038/emboj.2012.112
- Clegg NJ, Wongvipat J, Joseph JD, Tran C, Ouk S, Dilhas A, Chen Y, Grillot K, Bischoff ED, Cai L, et al. 2012. ARN-509: a novel antiandrogen for prostate cancer treatment. *Cancer Res* **72**: 1494–1503. doi:10.1158/0008-5472.CAN-11-3948
- Core LJ, Waterfall JJ, Lis JT. 2008. Nascent RNA sequencing reveals widespread pausing and divergent initiation at human promoters. *Science* **322**: 1845–1848. doi:10.1126/science.1162228
- Core LJ, Martins AL, Danko CG, Waters CT, Siepel A, Lis JT. 2014. Analysis of nascent RNA identifies a unified architecture of initiation regions at mammalian promoters and enhancers. *Nat Genet* **46**: 1311–1320. doi:10.1038/ng.3142
- DeMare LE, Leng J, Cotney J, Reilly SK, Yin J, Sarro R, Noonan JP. 2013. The genomic landscape of cohesin-associated chromatin interactions. *Genome Res* **23**: 1224–1234. doi:10.1101/gr.156570.113
- Eddins MP, Hsieh AC. 2014. PI3K-AKT-mTOR signaling in prostate cancer progression and androgen deprivation therapy resistance. *Asian J Androl* **16**: 378–386. doi:10.4103/1008-682X.122876
- Ernst J, Kellis M. 2012. ChromHMM: automating chromatin-state discovery and characterization. *Nat Methods* **9**: 215–216. doi:10.1038/nmeth.1906
- Fullwood MJ, Liu MH, Pan YF, Liu J, Xu H, Mohamed YB, Orlov YL, Velkov S, Ho A, Mei PH, et al. 2009. An oestrogen-receptor- $\alpha$ -bound human chromatin interactome. *Nature* **462**: 58–64. doi:10.1038/nature08497
- Göndör A, Ohlsson R. 2009. Chromosome crosstalk in three dimensions. *Nature* **461**: 212–217. doi:10.1038/nature08453
- Handoko L, Xu H, Li G, Ngan CY, Chew E, Schnapp M, Lee CW, Ye C, Ping JL, Mulawadi F, et al. 2011. CTCF-mediated functional chromatin interactome in pluripotent cells. *Nat Genet* **43**: 630–638. doi:10.1038/ng.857
- Heinz S, Benner C, Spann N, Bertolino E, Lin YC, Laslo P, Cheng JX, Murre C, Singh H, Glass CK. 2010. Simple combinations of lineage-determining transcription factors prime cis-regulatory elements required for macrophage and B cell identities. *Mol Cell* **38**: 576–589. doi:10.1016/j.molcel.2010.05.004
- Hillmer AM, Yao F, Inaki K, Lee WH, Ariyaratne PN, Teo AS, Woo XY, Zhang Z, Zhao H, Ukil L, et al. 2011. Comprehensive long-span paired-end-tag mapping reveals characteristic patterns of structural variations in epithelial cancer genomes. *Genome Res* **21**: 665–675. doi:10.1101/gr.113555.110
- Hoffmann TJ, Van Den Eeden SK, Sakoda LC, Jorgenson E, Habel LA, Graff RE, Passarelli MN, Cario CL, Emami NC, Chao CR, et al. 2015. A large multiethnic genome-wide association study of prostate cancer identifies novel risk variants and substantial ethnic differences. *Cancer Discov* **5**: 878–891. doi:10.1158/2159-8290.CD-15-0315
- Kim S, Shin C, Jee SH. 2015. Genetic variants at 1q32.1, 10q11.2 and 19q13.41 are associated with prostate-specific antigen for prostate cancer screening in two Korean population-based cohort studies. *Gene* **556**: 199–205. doi:10.1016/j.gene.2014.11.059

- Krzywinski M, Schein J, Birol I, Connors J, Gascoyne R, Horsman D, Jones SJ, Marra MA. 2009. Circos: an information aesthetic for comparative genomics. *Genome Res* **19**: 1639–1645. doi:10.1101/gr.092759.109
- Kuleshov MV, Jones MR, Rouillard AD, Fernandez NF, Duan Q, Wang Z, Koplev S, Jenkins SL, Jagodnik KM, Lachmann A, et al. 2016. Enrichr: a comprehensive gene set enrichment analysis web server 2016 update. *Nucleic Acids Res* **44**: W90–W97. doi:10.1093/nar/gkw377
- Lee SH, Johnson D, Luong R, Sun Z. 2015. Crosstalk between androgen and PI3K/AKT signaling pathways in prostate cancer cells. *J Biol Chem* **290**: 2759–2768. doi:10.1074/jbc.M114.607846
- Li G, Fullwood MJ, Xu H, Mulawadi FH, Velkov S, Vega V, Ariyaratne PN, Mohamed YB, Ooi HS, Tennakoon C, et al. 2010. ChIA-PET tool for comprehensive chromatin interaction analysis with paired-end tag sequencing. *Genome Biol* **11**: R22. doi:10.1186/gb-2010-11-2-r22
- Li G, Ruan X, Auerbach RK, Sandhu KS, Zheng M, Wang P, Poh HM, Goh Y, Lim J, Zhang J, et al. 2012. Extensive promoter-centered chromatin interactions provide a topological basis for transcription regulation. *Cell* **148**: 84–98. doi:10.1016/j.cell.2011.12.014
- Lin CY, Vega VB, Thomsen JS, Zhang T, Kong SL, Xie M, Chiu KP, Lipovich L, Barnett DH, Stossi F, et al. 2007. Whole-genome cartography of estrogen receptor  $\alpha$  binding sites. *PLoS Genet* **3**: e87. doi:10.1371/journal.pgen.0030087
- Lin C, Yang L, Tanasa B, Hutt K, Ju BG, Ohgi K, Zhang J, Rose DW, Fu XD, Glass CK, et al. 2009. Nuclear receptor-induced chromosomal proximity and DNA breaks underlie specific translocations in cancer. *Cell* **139**: 1069–1083. doi:10.1016/j.cell.2009.11.030
- Lingadahalli S, Jadhao S, Sung YY, Chen M, Hu L, Chen X, Cheung E. 2018. Novel lncRNA *LINC00844* regulates prostate cancer cell migration and invasion through AR signaling. *Mol Cancer Res* **16**: 1865–1878. doi:10.1158/1541-7786.MCR-18-0087
- Magee JA, Chang LW, Stormo GD, Milbrandt J. 2006. Direct, androgen receptor-mediated regulation of the *FKBP5* gene via a distal enhancer element. *Endocrinology* **147**: 590–598. doi:10.1210/en.2005-1001
- Majumder PK, Sellers WR. 2005. Akt-regulated pathways in prostate cancer. *Oncogene* **24**: 7465–7474. doi:10.1038/sj.onc.1209096
- Makkonen H, Kauhanen M, Paakinaho V, Jääskeläinen T, Palvimo JJ. 2009. Long-range activation of *FKBP51* transcription by the androgen receptor via distal intronic enhancers. *Nucleic Acids Res* **37**: 4135–4148. doi:10.1093/nar/gkp352
- Mani RS, Tomlins SA, Callahan K, Ghosh A, Nyati MK, Varambally S, Palanisamy N, Chinnaiyan AM. 2009. Induced chromosomal proximity and gene fusions in prostate cancer. *Science* **326**: 1230. doi:10.1126/science.1178124
- Parolia A, Crea F, Xue H, Wang Y, Mo F, Ramnarine VR, Liu HH, Lin D, Saidu NR, Clermont PL, et al. 2015. The long non-coding RNA *PCGEM1* is regulated by androgen receptor activity *in vivo*. *Mol Cancer* **14**: 46. doi:10.1186/s12943-015-0314-4
- Pflueger D, Terry S, Sboner A, Habegger L, Esgueva R, Lin PC, Svensson MA, Kitabayashi N, Moss BJ, MacDonald TY, et al. 2011. Discovery of non-ETS gene fusions in human prostate cancer using next-generation RNA sequencing. *Genome Res* **21**: 56–67. doi:10.1101/gr.110684.110
- Prensner JR, Iyer MK, Balbin OA, Dhanasekaran SM, Cao Q, Brenner JC, Laxman B, Asangani IA, Grasso CS, Kominsky HD, et al. 2011. Transcriptome sequencing across a prostate cancer cohort identifies *PCAT-1*, an unannotated lincRNA implicated in disease progression. *Nat Biotechnol* **29**: 742–749. doi:10.1038/nbt.1914
- Prensner JR, Iyer MK, Sahu A, Asangani IA, Cao Q, Patel L, Vergara IA, Davicioni E, Erho N, Ghadessi M, et al. 2013. The long noncoding RNA *SCHLAPI* promotes aggressive prostate cancer and antagonizes the SWI/SNF complex. *Nat Genet* **45**: 1392–1398. doi:10.1038/ng.2771
- Rickman DS, Soong TD, Moss B, Mosquera JM, Dlabal J, Terry S, MacDonald TY, Tripodi J, Bunting K, Najfeld V, et al. 2012. Oncogene-mediated alterations in chromatin conformation. *Proc Natl Acad Sci* **109**: 9083–9088. doi:10.1073/pnas.1112570109
- Sahu B, Pihlajamaa P, Dubois V, Kerkhofs S, Claessens F, Jänne OA. 2014. Androgen receptor uses relaxed response element stringency for selective chromatin binding and transcriptional regulation *in vivo*. *Nucleic Acids Res* **42**: 4230–4240. doi:10.1093/nar/gkt1401
- Schneider R, Grosschedl R. 2007. Dynamics and interplay of nuclear architecture, genome organization, and gene expression. *Genes Dev* **21**: 3027–3043. doi:10.1101/gad.1604607
- Schoenfelder S, Sexton T, Chakalova L, Cope NF, Horton A, Andrews S, Kurukuti S, Mitchell JA, Umlauf D, Dimitrova DS, et al. 2010. Preferential associations between co-regulated genes reveal a transcriptional interactome in erythroid cells. *Nat Genet* **42**: 53–61. doi:10.1038/ng.496
- Shannon P, Markiel A, Ozier O, Baliga NS, Wang JT, Ramage D, Amin N, Schwikowski B, Ideker T. 2003. Cytoscape: a software environment for integrated models of biomolecular interaction networks. *Genome Res* **13**: 2498–2504. doi:10.1101/gr.1239303
- Sharma NL, Massie CE, Butter F, Mann M, Bon H, Ramos-Montoya A, Menon S, Stark R, Lamb AD, Scott HE, et al. 2014. The ETS family member *GABPA* modulates androgen receptor signalling and mediates an aggressive phenotype in prostate cancer. *Nucleic Acids Res* **42**: 6256–6269. doi:10.1093/nar/gku281
- Shen MM, Abate-Shen C. 2010. Molecular genetics of prostate cancer: new prospects for old challenges. *Genes Dev* **24**: 1967–2000. doi:10.1101/gad.1965810
- Sung YY, Cheung E. 2014. Androgen receptor co-regulatory networks in castration-resistant prostate cancer. *Endocr Relat Cancer* **21**: R1–R11. doi:10.1530/ERC-13-0326
- Tan PY, Chang CW, Chng KR, Wansa KD, Sung WK, Cheung E. 2012. Integration of regulatory networks by *NKX3-1* promotes androgen-dependent prostate cancer survival. *Mol Cell Biol* **32**: 399–414. doi:10.1128/MCB.05958-11
- Tennakoon C, Purbojati RW, Sung WK. 2012. BatMis: a fast algorithm for *k*-mismatch mapping. *Bioinformatics* **28**: 2122–2128. doi:10.1093/bioinformatics/bts339
- Thibodeau SN, French AJ, McDonnell SK, Chevillet J, Middha S, Tillmans L, Riska S, Baheti S, Larson MC, Fogarty Z, et al. 2015. Identification of candidate genes for prostate cancer-risk SNPs utilizing a normal prostate tissue eQTL data set. *Nat Commun* **6**: 8653. doi:10.1038/ncomms9653
- Tran C, Ouk S, Clegg NJ, Chen Y, Watson PA, Arora V, Wongvipat J, Smith-Jones PM, Yoo D, Kwon A, et al. 2009. Development of a second-generation antiandrogen for treatment of advanced prostate cancer. *Science* **324**: 787–790. doi:10.1126/science.1168175
- Trapnell C, Roberts A, Goff L, Pertea G, Kim D, Kelley DR, Pimentel H, Salzberg SL, Rinn JL, Pachter L. 2012. Differential gene and transcript expression analysis of RNA-seq experiments with TopHat and Cufflinks. *Nat Protoc* **7**: 562–578. doi:10.1038/nprot.2012.016
- Wang Q, Carroll JS, Brown M. 2005. Spatial and temporal recruitment of androgen receptor and its coactivators involves chromosomal looping and polymerase tracking. *Mol Cell* **19**: 631–642. doi:10.1016/j.molcel.2005.07.018
- Wang Q, Li W, Liu XS, Carroll JS, Jänne OA, Keeton EK, Chinnaiyan AM, Pienta KJ, Brown M. 2007. A hierarchical network of transcription factors governs androgen receptor-dependent prostate cancer growth. *Mol Cell* **27**: 380–392. doi:10.1016/j.molcel.2007.05.041
- Wang Q, Li W, Zhang Y, Yuan X, Xu K, Yu J, Chen Z, Beroukhim R, Wang H, Lupien M, et al. 2009. Androgen receptor regulates a distinct transcription program in androgen-independent prostate cancer. *Cell* **138**: 245–256. doi:10.1016/j.cell.2009.04.056
- Wang D, Garcia-Bassets I, Benner C, Li W, Su X, Zhou Y, Qiu J, Liu W, Kaikkonen MU, Ohgi KA, et al. 2011. Reprogramming transcription by distinct classes of enhancers functionally defined by eRNA. *Nature* **474**: 390–394. doi:10.1038/nature10006
- Wang M, Takahashi A, Liu F, Ye D, Ding Q, Qin C, Yin C, Zhang Z, Matsuda K, Kubo M, et al. 2015. Large-scale association analysis in Asians identifies new susceptibility loci for prostate cancer. *Nat Commun* **6**: 8469. doi:10.1038/ncomms9469
- Wickham H. 2009. *Ggplot2: elegant graphics for data analysis*. Springer, New York.
- Winterbach W, Van Mieghem P, Reinders M, Wang H, de Ridder D. 2013. Topology of molecular interaction networks. *BMC Syst Biol* **7**: 90. doi:10.1186/1752-0509-7-90
- Xu Q, Chen LL, Ruan X, Chen D, Zhu A, Chen C, Bertrand D, Jiao WB, Hao BH, Lyon MP, et al. 2013. The draft genome of sweet orange (*Citrus sinensis*). *Nat Genet* **45**: 59–66. doi:10.1038/ng.2472
- Yang L, Lin C, Jin C, Yang JC, Tanasa B, Li W, Merkurjev D, Ohgi KA, Meng D, Zhang J, et al. 2013. lncRNA-dependent mechanisms of androgen-receptor-regulated gene activation programs. *Nature* **500**: 598–602. doi:10.1038/nature12451
- Yu J, Yu J, Mani RS, Cao Q, Brenner CJ, Cao X, Wang X, Wu L, Li J, Hu M, et al. 2010. An integrated network of androgen receptor, Polycomb, and *TMPRSS2-ERG* gene fusions in prostate cancer progression. *Cancer Cell* **17**: 443–454. doi:10.1016/j.ccr.2010.03.018
- Zamal FA, Ruths D. 2012. On the contributions of topological features to transcriptional regulatory network robustness. *BMC Bioinformatics* **13**: 318. doi:10.1186/1471-2105-13-318
- Zhang Z, Chang CW, Goh WL, Sung WK, Cheung E. 2011. CENTDIST: discovery of co-associated factors by motif distribution. *Nucleic Acids Res* **39**: W391–W399. doi:10.1093/nar/gkr387
- Zhang Y, Wong CH, Birnbaum RY, Li G, Favaro R, Ngan CY, Lim J, Tai E, Poh HM, Wong E, et al. 2013. Chromatin connectivity maps reveal dynamic promoter-enhancer long-range associations. *Nature* **504**: 306–310. doi:10.1038/nature12716

Received September 17, 2017; accepted in revised form December 13, 2018.