

CORRECTION

Correction: Twenty-five-year trends in breastfeeding initiation: The effects of sociodemographic changes in Great Britain, 1985-2010

The *PLOS ONE* Staff

Figs 1 and 2 are incorrect. The authors have provided corrected versions here. The publisher apologizes for the error.



 OPEN ACCESS

Citation: The *PLOS ONE* Staff (2019) Correction: Twenty-five-year trends in breastfeeding initiation: The effects of sociodemographic changes in Great Britain, 1985-2010. *PLoS ONE* 14(2): e0212301. <https://doi.org/10.1371/journal.pone.0212301>

Published: February 7, 2019

Copyright: © 2019 The PLOS ONE Staff. This is an open access article distributed under the terms of the [Creative Commons Attribution License](https://creativecommons.org/licenses/by/4.0/), which permits unrestricted use, distribution, and reproduction in any medium, provided the original author and source are credited.

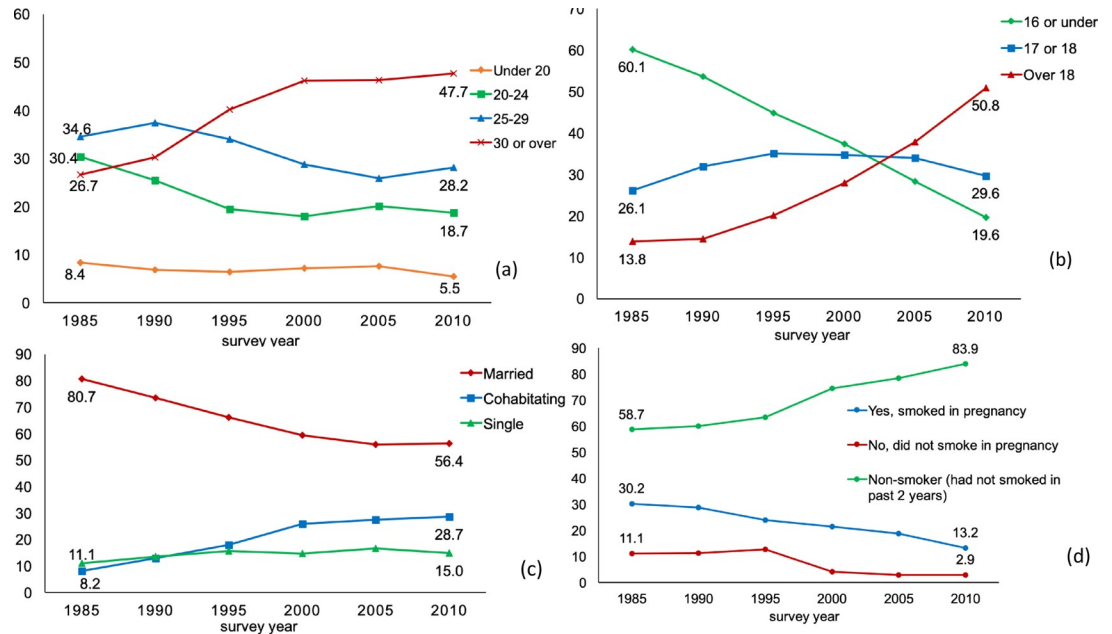


Fig 1. Changing distributions of the sociodemographic characteristics of mothers in GB, 1985 to 2010. A) Proportion of mothers by age at delivery (maternal age); B) Proportion of mothers by education; C) Proportion of mothers by partnership status; D) Proportion of mothers by smoking status in pregnancy.

<https://doi.org/10.1371/journal.pone.0212301.g001>

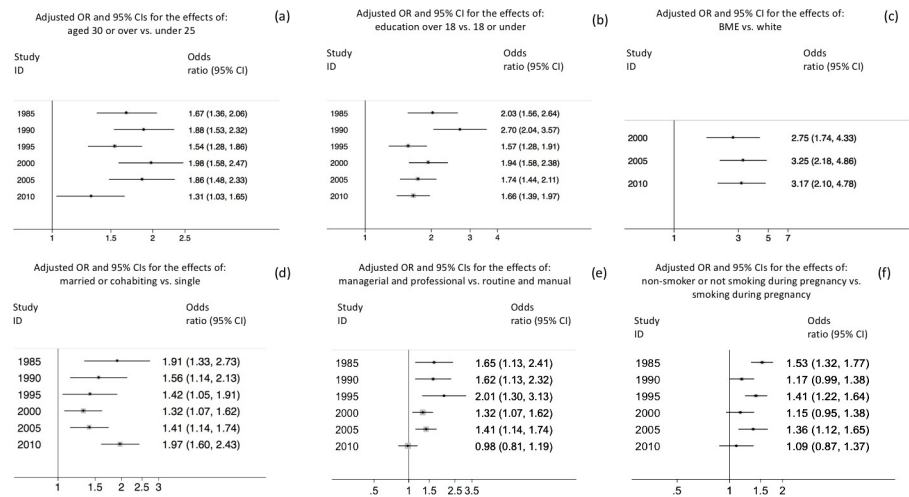


Fig 2. Changes in the associations between breastfeeding initiation and sociodemographic subgroups of mothers in GB, 1985 to 2010. A) Maternal age; B) Education; C) Ethnicity; D) Partnership status; E) SES; F) Smoking in pregnancy.

<https://doi.org/10.1371/journal.pone.0212301.g002>

Reference

1. Simpson DA, Quigley MA, Kurinczuk JJ, Carson C (2019) Twenty-five-year trends in breastfeeding initiation: The effects of sociodemographic changes in Great Britain, 1985–2010. *PLoS ONE* 14(1): e0210838. <https://doi.org/10.1371/journal.pone.0210838> PMID: 30653579