



Published in final edited form as:

*Acta Neuropathol.* 2018 August ; 136(2): 227–237. doi:10.1007/s00401-018-1888-x.

## Heterogeneity within the PF-EPN-B Ependymoma Subgroup

*A full list of authors and affiliations appears at the end of the article.*

### Abstract

Posterior fossa ependymoma comprise three distinct molecular variants, termed PF-EPN-A (PFA), PF-EPN-B (PFB) and PF-EPN-SE (subependymoma). Clinically they are very disparate and PFB tumors are currently being considered for a trial of radiation avoidance. However, to move forward, unraveling the heterogeneity within PFB would be highly desirable. To discern the molecular heterogeneity within PFB, we performed an integrated analysis consisting of DNA methylation profiling, copy number profiling, gene expression profiling and clinical correlation across a cohort of 212 primary posterior fossa PFB tumors. Unsupervised spectral clustering and t-SNE analysis of genome wide methylation data revealed five distinct subtypes of PFB tumors, termed PFB1–5, with distinct demographics, copy number alterations, and gene expression profiles. All PFB subtypes were distinct from PFA and posterior fossa subependymomas. Of the five subtypes, PFB4 and PFB5 are more discrete, consisting of younger and older patients, respectively; with a strong female gender enrichment in PFB5 (age:  $p=0.011$ , gender:  $p=0.04$ ). Broad copy number aberrations were common, however, many events such as chromosome 2 loss, 5 gain, 17 loss were enriched in specific subtypes and 1q gain was enriched in PFB1. Late relapses were common across all five subtypes but deaths were uncommon and present in only two subtypes (PFB1 and PFB3). Unlike the case in PFA ependymoma, 1q gain was not a robust marker of poor progression free survival, however, chromosome 13q loss may represent a novel marker for risk stratification across the spectrum of PFB subtypes. Similar to PFA ependymoma, there exists significant intertumoral heterogeneity within PFB, with distinct molecular subtypes identified. Even when accounting for this heterogeneity, extent of resection remains the strongest predictor of poor outcome. However, this biological heterogeneity must be accounted for in future pre-clinical modeling and personalized therapies.

### Keywords

ependymoma; posterior fossa; subgrouping; PFB; PFA; clustering

### Introduction

Genomics has significantly advanced our knowledge of the biology of posterior fossa ependymoma [9–11, 14, 20, 23, 24, 26]. Posterior fossa ependymoma comprise three distinct molecular subgroups, defined by gene expression and genome wide DNA

---

To whom correspondence may be addressed: Vijay Ramaswamy MD PhD FRCPC, Division of Haematology/Oncology, Hospital for Sick Children, 555 University Ave, Toronto, ON, M5G 1X8, vijay.ramaswamy@sickkids.ca and Marcel Kool, PhD, Division of Pediatric Neuro-Oncology, German Cancer Research Center, Heidelberg, Germany, m.kool@dkfz.de.

\*co-first authors  
#co-senior authors

methylation, and they display highly disparate demographics, cytogenetics and outcomes [6,11,12,14–16, 26]. PFA (PF-EPN-A) ependymomas arise in younger patients, primarily infants and have generally a bland genome and a poor outcome. In contrast, PFB (PF-EPN-B) ependymomas occur in older children and adults, harbor multiple broad cytogenetic aberrations and generally have a favorable outcome. The third molecular subgroup comprises mostly grade I subependymomas (PF-SE), which occur almost exclusively in adults only and have a good outcome as well [14]. Currently, the standard of care for all posterior fossa ependymoma in patients under 18 is maximal safe surgical resection followed by conformal radiation to the tumor bed, however in adults adjuvant postoperative radiation is variable resulting in a subset of patients who are treated with surgery only [19].

Recently we demonstrated that there are profound clinical differences and responses to therapy between PFA and PFB [14,15, 26]. PFA have a poor outcome overall, with an even worse outcome when sub-totally resected. PFB have an excellent outcome overall, where a significant proportion of patients can be cured with a gross total resection alone. Therefore, patients with PFB ependymoma, particularly children are excellent candidates for radiation sparing strategies, where carefully controlled studies are being contemplated of observation alone in the setting of gross total resection. Gain of 1q has been proposed as a marker of poor prognosis in PFA ependymoma, however its role in PFB is unclear [1, 4, 7, 8, 17, 25]. We have also recently shown that PFA ependymoma are highly heterogeneous entities with two major groups with multiple subtypes[13]. Moreover, PFB has been assumed to be a homogeneous group, however it is unknown if there exists molecular and/or clinical heterogeneity and additional substructure within PFB ependymoma. As such, unraveling this heterogeneity will be a crucial starting point to the development of personalized therapies within PFB. We assembled the largest cohort to date of clinically annotated PFB ependymomas profiled using genome-wide DNA methylation arrays to assess molecular heterogeneity within the PFB ependymoma subgroup.

## Methods

### Patient cohort

Two hundred and twelve posterior fossa ependymomas were obtained through the GENE consortium (Global Ependymoma Network of Excellence), St. Jude's Children's Research Hospital, the Collaborative Ependymoma Research Network, the Burdenko Neurosurgical Institute and the German Cancer Research Center. Both frozen and FFPE samples were collected from diagnosis. Samples were all collected in accordance with the Hospital for Sick Children Research Ethics Board and local institutional research ethics boards. All frozen samples were snap frozen and stored at  $-80^{\circ}\text{C}$ . Formalin fixed paraffin embedded tissue was collected as scrolls or unstained slides. A subtotal resection was defined as more than 5mm postoperative residual on the post-operative MRI.

### Genome wide DNA methylation profiling

Samples were analyzed on the Illumina Infinium HumanMethylation450 or the HumanMethylationEPIC beadchips at the PM-OICR Translational Genomics Laboratory (Toronto, Ontario) or the German Cancer Research Center (Heidelberg, Germany) according

to manufacturer's instructions and as previously described.[14] All analysis was conducted in the R Statistical Environment (v3.4.1). Raw data files (.idat) generated by the Illumina iScan array scanner from both frozen and FFPE derived tissue were loaded and pre-processed using the minfi package (v1.22.1). Illumina pre-processing was selected to mimic the normalization performed in Illumina Genome Studio. To account for possible batch effects due to divergent protocols for fresh frozen and FFPE material, a batch adjustment was performed. Batch effects were estimated by fitting a linear model to the log<sub>2</sub> transformed intensity values of the methylated and unmethylated channel. After removing the component due to the batch effect the residuals were backtransformed to intensity scale and methylation beta values were calculated as described in Illumina's protocols. Subsequently, the following filtering criteria were applied: Removal of probes targeting the X and Y chromosomes, removal of probes containing a single nucleotide polymorphism (dbSNP132 Common) within five base pairs of and including the targeted CpG-site, and probes not mapping uniquely to the human reference genome (hg19) allowing for one mismatch. In total, 431069 probes were kept for analysis. PFB status was determined using the Heidelberg brain tumor classifier (<https://www.moleculareuropathology.org/mnp>) and unsupervised hierarchical clustering as previously described.[2,14]

### Gene expression profiling

PFB ependymoma samples, for which gene expression profiles generated on the Affymetrix GeneChip Human Genome U133 Plus 2.0 Array (Affymetrix, Santa Clara, USA) at the Microarray Department of the University of Amsterdam, the Netherlands were processed as previously described (GSE64415) [13, 14]. Briefly, data was normalized using the MAS5.0 algorithm and differentially expressed genes between the five subtypes were generated within the R2: Genomics Analysis and Visualization Platform comparing one (<http://r2.amc.nl>). TMEV software was used to generate the heatmap displaying the top 10 most upregulated genes per subtype[21]. Differentially expressed genes (adj. p<0.05) when comparing one subtype versus others were used to performed pathway analysis with g:profiler[18].

### Unsupervised t-SNE analysis

For unsupervised t-Distributed Stochastic Neighbor Embedding (t-SNE) analysis, we selected the 6749 most variably methylated probes across the dataset (s.d. > 0.25). Pairwise sample distances were calculated by using 1 minus the weighted Pearson correlation coefficient as the distance measure. Unweighted correlation coefficients provided similar results, and as such weighted probes were used to reduce the noise. Pairwise Pearson correlation was calculated using the wtd.cors function of the weights package v.0.85. We used the probe standard deviation subtracted by 0.25 as the weight, giving more variable probes greater influence. The resulting distance matrix was used to perform the t-SNE analysis (Rtsne package v.0.13). The following non-default parameters were used: theta = 0, is\_distance = T, pca = F, max\_iter = 2000. Clusters were annotated using the DBSCAN algorithm as implemented in the dbscan package v.1.1.1. The following non-default parameters were used: minPts = 10, eps = 2.4. Subsequently, samples not assigned to any cluster were iteratively merged to their nearest cluster.

## Spectral clustering

The same weighted distance matrix used for unsupervised t-SNE analysis was used to perform spectral clustering. Spectral clustering implemented in the SNFtool package (v2.2.1) was run on the patient by patient similarity matrix to obtain groups corresponding to k=2 to 8.

Copy number inference from methylation arrays and identification of recurrent broad events.

Copy number segmentation was performed from genome wide methylation arrays using the conumee package (v0.99.4) in the R statistical environment (v3.3.3) as previously described [5, 22]. Broad copy number events were determined using visual inspection of copy number plots and significance of the frequency of each broad event was tested using the exact binomial test. Each broad event frequency was compared to the background frequency, which was determined from a robust regression of the observed frequencies with respect to gene content (i.e. number of RefSeq genes) across all chromosomes. This approach was motivated by GISTIC's broad event analysis [3].

## Statistical analysis

Progression-free survival and overall survival were analysed by the Kaplan-Meier method and p-values reported using the log-rank test. Associations between covariates and risk groups were tested by the Fishers exact test. Univariable and multivariable cox proportional hazard regression was used to estimate hazard ratios including 95% confidence intervals. All statistical analyses were performed in the R statistical environment (v3.4.1), using R packages survival (v2.41-3), and ggplot2 (v2.2.1).

## Results

### DNA methylation profiling identifies five distinct subtypes of PFB ependymoma

Genome-wide methylation profiling was available on 212 primary posterior fossa ependymomas (76 frozen and 136 formalin fixed paraffin embedded samples) previously assigned to the PFB subgroup using either the Illumina HumanMethylation450 (n=180) or HumanMethylationEPIC arrays (n=32) and the Heidelberg brain tumor classifier (<https://www.moleculareuropathology.org/mnp>) [2].

In order to discern the extent of heterogeneity within the PFB subgroup, we applied unsupervised clustering using the most variably methylated probes with a standard deviation over 0.25. A distance matrix was constructed using 1 minus the weighted Pearson correlation and both t-SNE analysis and spectral clustering were applied to the resulting distance matrix (Figure 1A,1B). Using the t-SNE analysis performing 2000 iterations, five distinct clusters were identified which we term subtypes. Spectral clustering was also applied for k=2 to k=8, confirming the optimal clusters at k=5 (Figure 1B, Supplemental Figure 1). The subtypes obtained by t-SNE and the spectral clustering were also largely identical when the t-SNE analysis is compared to spectral clustering at k=5 (Supplemental Figure 2A). No major differences in overall methylation levels at probes near the promoter were identified across the five subtypes (Supplemental Figure 2B). In four instances, paired

samples from diagnosis and relapse were available and we did not observe any switching of subtype at recurrence (1 PFB1, 2 PFB2, 1 PFB3).

To determine if any of the PFB subtypes were closer to PF-SE subependymoma, particularly the ones with older age, we clustered the 212 PFB's with 34 posterior fossa subependymomas (PF-EPN-SP) and 220 PFA's. The five PFB subtypes clustered together, without any overlap with PF-SE subependymomas or PFA's suggesting the heterogeneity within PFB is distinct from the other two groups (Figure 1C).

### Differential gene expression across PFB subtypes

Array-based gene expression analyses of the five PFB subtypes ( $n = 25$ ) reveals the top upregulated genes per subtypes (Figure 1D), Differential expression analysis identifies in total 693 genes as significantly differentially expressed (adj.  $p < 0.05$ ) between one versus the other four subtypes. Similar to the methylation based clustering, PFB4 and PFB5 had significantly more differentially expressed genes compared to PFB1, 2, and 3 which exhibited fewer differences. Subsets of these genes, which included transcription factors, developmental patterning pathways and potential drug targets, showed upregulated expression within the five subtypes. Gene-ranked pathway enrichment analysis of subtype specific genes indicated several general and specific developmental processes and developmental patterning pathways identified as deregulated processes, specifically within PFB4 and PFB5 (Supplemental Figure 3)[18].

### Demographic differences across PFB subtypes

Annotation of demographics of the five subtypes reveals significant age differences between the five subtypes, specifically, an enrichment of younger patients in PFB4 (median 15 years, IQR 10.1–23.5 years) and enrichment of older patients in PFB5 (median 40.6, IQR 28.5–50 years, Figure 2A  $p=0.011$ ). PFB1, PFB2 and PFB3 had similar median age at diagnosis (PFB1 25.9 years, IQR 13.4–42 years; PFB2: median 26 years, IQR 17–41 years; PFB3: median 29.1 years, IQR 13.2–41 years, Figure 2A). Moreover, there are significant gender differences, wherein PFB2 and PFB4 have a high male bias whereas PFB3 and PFB5 have a high female patient bias (Figure 2B,  $p=0.04$ ).

### PFB subtype specific chromosomal aberrations

We generated genome-wide DNA copy number profiles, using the combined intensity of the methylated and unmethylated probes as previously described [5]. Many samples displayed aneuploidy without any recurrent amplifications or deletions, consistent with previous descriptions of PFB ependymoma [26]. Moreover, the overall patterns of broad copy number changes were similar to previous reports, including enrichment of 1q gain (12%), monosomy 6 (61.3%), monosomy 10 (38.7%), monosomy 17 (33.5%), trisomy 5 (31.1%), trisomy 8 (23.5%), trisomy 18 (51.9%) and 22q loss (48.1%) [14]. However, when we repeated this analysis across the PFB subtypes, we observed several subtype specific aberrations like monosomy 2 in PFB2 (PFB1 17/75, PFB2 18/36, PFB3 10/54, PFB4 4/30, PFB5 1/17,  $p=0.0014$ ), monosomy 3 in PFB1 (PFB1 38/75, PFB2 5/36, PFB3 11/54, PFB4 4/30, PFB5 2/17,  $p=3.8 \times 10^{-5}$ ), monosomy 6 in PFB1,2,3 (PFB1 51/75, PFB2 26/36, PFB3 41/54, PFB4 8/30, PFB5 4/17,  $p=1.2 \times 10^{-6}$ ), monosomy 8 in PFB3 (PFB1 1/75, PFB2 5/36, PFB3 25/54,

PFB4 2/30, PFB5 1/17,  $p=1.3\times 10^{-11}$ ), gain of chromosome 11 in PFB4 (PFB1 17/75, PFB2 13/36, PFB3 14/54, PFB4 21/30, PFB5 0/17,  $p=4.4\times 10^{-6}$ ), and enrichment of 1q gain (PFB1 19/75, PFB2 5/36, PFB3 1/54, PFB4 0/30, PFB5 1/17,  $p=1.6\times 10^{-4}$ ) and monosomy 17 (PFB1 44/75, PFB2 10/36, PFB3 9/54, PFB4 5/30, PFB5 3/17,  $p=1.6\times 10^{-6}$ ) within PFB1 (Figure 3A–B). Copy number solutions for  $k=3$  and 4 suggested that PFB1,2 and 3 were more similar groups overall but at  $k=5$  certain broad events were further enriched, like monosomy 2 in PFB2, monosomy 8 in PFB3, monosomy 3 in PFB1 and gain of 1q in PFB1 (Supplemental Figure 3). tSNE analysis and NMF clustering of broad copy number aberrations could not recapitulate any of the observed subtypes (Supplemental Figure 4).

### Extent of surgical resection is the strongest predictor of progression free survival across PFB ependymoma

Survival across the five PFB groups was determined using a Kaplan-Meier survival analysis, and no significant difference in overall or progression free survival was observed between the five subtypes (Supplemental Figure 5A–B). Progression free survival was available on 137 cases, and progression events were evenly distributed across the five subtypes. Late relapses were common in this cohort, whereby 13 of the 36 relapses occurred after five years and five relapses even after 10 years, highlighting the importance of long-term follow-up in this group. Late relapses were evenly distributed across the five subtypes. Sixteen deaths were observed in the cohort, nine events in PFB1 and five events in PFB3, with one death in each of PFB2 and PFB4, and no deaths observed in PFB5.

The rates of incomplete resection and upfront adjuvant radiation were not significantly different across the five subtypes (Supplemental Figure 6C–D). Consistent with our previous observations, in this cohort overall, a subtotal resection portended to a worse progression free survival in a univariable analysis (STR: HR 3.01 95% CI 1.51–5.98  $p=1.7\times 10^{-3}$ ). Interestingly in this cohort, no upfront radiation and 1q gain were not significant predictors of poor outcome in a univariable analysis, although both have high hazard ratio's suggesting they may have a trend to a worse outcome (No Upfront Radiation: HR 1.76 95% CI 0.83–3.75  $p=0.15$ ; 1q gain: 1.84 95% CI 0.76–4.48  $p=0.18$ ) (Supplemental Figure).

In order to discern if other copy number abnormalities confer any prognostic relevance, an exploratory univariable analysis was undertaken whereby survival was assessed across all copy number aberrations with at least a 10% incidence. Surprisingly, loss of 13q was significant in a univariable analysis (Figure 4, log-rank  $p=0.01$ ); and a univariable analysis of 13q loss compared to both balanced 13q and 13q gain confirmed a significant effect size (HR 2.66, 95% CI 1.262 – 5.591,  $p=0.01$ ). A multivariable analysis was then undertaken incorporating 13q and extent of resection, and the prognostic value of 13q loss remains significant (HR 2.73, 95% CI 1.18–5.32  $p=0.017$ ). To further determine the relationship between 13q loss and extent of resection can potentially predict progression free survival, a kaplan-meier analysis was performed comparing 13q balanced/gain versus 13q loss stratified by extent of resection, which suggests that subtotal resected 13q loss tumors may represent a novel high-risk group of PFB ependymoma. Loss of 13q was not significant in predicting overall survival (HR 0.92, 95% CI 0.20–4.20,  $p=0.92$ ).



In order to determine if extent of surgical resection and chromosome 13q loss remained prognostic when correcting for PFB subtypes, age, gender, 1q gain and upfront radiation, a multivariable analysis of progression free survival was performed (Table 1). Both an incomplete resection and 13q loss remained significant, when correcting for co-variants. Interestingly, upfront radiation and 1q gain were marginally significant in the multivariable model, however, a significant interaction factor could not be discerned between a subtotal resection, upfront radiation and 1q gain. Only an incomplete resection was a risk factor for worse overall survival (Table 1). Overall outcome was excellent across the whole cohort with only 16 deaths across 142 patients, and none of the variables above were predictive of death, although longer followup is likely required.

## Discussion

Across the largest cohort of PFB ependymoma assembled to date, we show that PFB is comprised of five distinct molecular subtypes. These five subtypes display distinct demographics and copy number profiles suggesting that there exists significant molecular heterogeneity within PFB ependymoma. We also show that none of the five subtypes of PFB ependymoma overlap with either subependymoma or any of the PFA ependymoma subtypes, further strengthening the existence of three major molecular subgroups of posterior fossa ependymoma

PFB ependymoma has been considered for de-escalation of therapy due to their excellent overall survival [12]. Previously, we have shown that 50% of gross totally resected PFB ependymoma can be cured with surgery alone, suggesting that this group could potentially be spared the long-term side effects of radiation and/or chemotherapy [15]. Our current data suggests that even when correcting for heterogeneity within PFB ependymoma, this group can still benefit from de-escalation of therapy. However, the observation that late relapses are common in PFB highlights that long-term follow-up is required for any eventual trial of de-escalation of therapy. Overall survival in the cohort was excellent suggesting successful salvage is possible, however, the observation that deaths were enriched in PFB1 and 3 requires further evaluation in future cohorts.

Several studies over the past 15 years have suggested 1q gain to be a marker of poor prognosis across all ependymomas as a whole [7, 8]. However, when 1q is evaluated in a subgroup specific manner, it is only prognostic for progression-free and overall survival in PFA, with no prognostic relevance in the RELA subgroup of supratentorial ependymoma [14]. Indeed, currently 1q gained PFA are being prioritized urgently for new and novel upfront approaches. Our previous work suggested that 1q gain was prognostic for progression-free survival but not overall survival within PFB [14]. Our current results in a much larger cohort suggest that there may be only limited utility to 1q gain as a prognostic marker specifically for selection of patients who would benefit from radiation sparing strategies, and this requires further evaluation in prospective cohorts. However, the current results are consistent with our previous observations that the overall survival is not significantly different in PFB patients harbouring 1q gained tumors. The relatively high hazard ratio for 1q gain suggests that its role as a prognostic marker may warrant further evaluation. However, for the next generation of clinical trials within posterior fossa

ependymoma, 1q should be used for stratification only within PFA, and highlights the importance of molecularly informed studies.

We show for the first time that identification of chromosome 13q loss may represent a more reliable prognostic marker across PFB ependymoma than 1q gain. Indeed, when stratifying chromosome 13q loss by extent of resection, gross totally resected PFB ependymoma with 13q loss appear to still have a poor outcome. The absence of other large cohorts of PFB ependymoma preclude its independent validation, however it does warrant further study particularly in the context of ongoing and upcoming prospective cooperative group studies.

Most importantly however, the identification of multiple subtypes of PFB, analogous to recent work across PFA ependymoma, show clearly that there exists significant biological heterogeneity within this group [13]. The current cohort is significantly limited by a lack of sufficient gene expression data, but the available data support the heterogeneity within PFB as determined by methylation profiling. Prospective collection of frozen tissue particularly in adults with posterior fossa ependymoma will be crucial to determine which specific biological processes underlie the observed subtypes. As such, our identification of five subtypes provides strong support for the prospective collection of tissue in this group for further next generation integrated analysis. Moreover, the observation that late relapses and deaths are not infrequent in this group highlight a need to identify and validate actionable pathways. Indeed, our identification of multiple subtypes of PFB has profound implications for future targeted therapies, as any “PFB” specific therapies may be restricted to specific subtypes. This is especially important in the context of the observed subtype specific copy number aberrations which suggest that PFB tumors do not emerge from a single driving event. As of today, zero recurrent mutations have been found in PFB ependymoma and a clear driver for these tumors is still lacking [10]. By focusing on specific PFB subtypes and by making use of additional molecular data like large gene expression profiling and more comprehensive next-generation-sequencing enriching for each subtype, future studies may be able to elucidate the underlying events that ultimately lead to the development of these tumors [10].

Further delineating the biology and prognostic markers of PFB ependymoma will require extensive collaboration across adult and pediatric centres, as currently adult ependymoma is an often-neglected entity, with a paucity of frozen tissue available. However, future basic science and translational science efforts on PFB should account for the heterogeneity within PFB ependymoma in the development of more targeted therapeutics.

## Supplementary Material

Refer to Web version on PubMed Central for supplementary material.

## Authors

Florence M.G. Cavalli<sup>1,\*</sup>, Jens-Martin Hübner<sup>2,3,4,\*</sup>, Tanvi Sharma<sup>2,3,4,\*</sup>, Betty Luu<sup>1</sup>, Martin Sill<sup>3</sup>, Michal Zapotocky<sup>5</sup>, Stephen C Mack<sup>6</sup>, Hendrik Witt<sup>2,3,37</sup>, Tong Lin<sup>7</sup>, David J.H. Shih<sup>8</sup>, Ben Ho<sup>5</sup>, Mariarita Santi<sup>9</sup>, Lyndsey Emery<sup>10</sup>, Juliette Hukin<sup>11</sup>, Christopher Dunham<sup>12</sup>, Roger E McLendon<sup>13</sup>, Eric S Lipp<sup>13</sup>, Sridharan



Gururangan<sup>14</sup>, Andrew Grossbach<sup>15</sup>, Pim French<sup>16</sup>, Johan M. Kros<sup>16</sup>, Marie-Lise C van Veelen<sup>16</sup>, Amulya A Nageswara Rao<sup>17</sup>, Caterina Giannini<sup>18</sup>, Sarah Leary<sup>19</sup>, Shin Jung<sup>20</sup>, Claudia C Faria<sup>21</sup>, Jaume Mora<sup>22</sup>, Ulrich Schüller<sup>23</sup>, Marta M Alonso<sup>24</sup>, Jennifer A Chan<sup>25</sup>, Almos Klekner<sup>26</sup>, Lola B Chambless<sup>27</sup>, Eugene I. Hwang<sup>28</sup>, Maura Massimino<sup>29</sup>, Charles G Eberhart<sup>30</sup>, Matthias A Karajannis<sup>31</sup>, Benjamin Lu<sup>32</sup>, Linda M Liao<sup>33</sup>, Massimo Zollo<sup>34</sup>, Veronica Ferrucci<sup>34</sup>, Carlos Carlotti<sup>35</sup>, Daniela PC Tirapelli<sup>35</sup>, Uri Tabori<sup>4</sup>, Eric Bouffet<sup>4</sup>, Marina Ryzhova<sup>36</sup>, David W Ellison<sup>37</sup>, Thomas E. Merchant<sup>38</sup>, Mark R Gilbert<sup>39</sup>, Terri S Armstrong<sup>39</sup>, Andrey Korshunov<sup>40</sup>, Stefan M Pfister<sup>2,3,41</sup>, Michael D Taylor<sup>1,42</sup>, Kenneth Aldape<sup>43</sup>, Kristian W. Pajtler<sup>2,3,41</sup>, Marcel Kool<sup>2,3,#</sup>, and Vijay Ramaswamy<sup>1,5,#</sup>

## Affiliations

<sup>1</sup>Programme in Developmental & Stem Cell Biology, The Hospital for Sick Children, Toronto, Ontario, Canada <sup>2</sup>Hopp Children's Cancer Center at the NCT Heidelberg (KITZ), Heidelberg, Germany <sup>3</sup>Division of Pediatric Neurooncology, German Cancer Research Center (DKFZ), and German Cancer Consortium (DKTK), Heidelberg, Germany <sup>4</sup>Faculty of Biosciences, Heidelberg University, Heidelberg, Germany <sup>5</sup>Division of Haematology / Oncology, Department of Pediatrics, The Hospital for Sick Children, Toronto, Ontario, Canada <sup>6</sup>Department of Pediatrics, Baylor College of Medicine, Houston, TX, United States <sup>7</sup>Department of Biostatistics, St. Jude Children's Research Hospital, Memphis, TN, United States <sup>8</sup>Department of Biostatistics and Computational Biology, Dana Farber Cancer Center, Harvard Medical School, Boston, MA, United States <sup>9</sup>Department of Pathology, Children's Hospital of Philadelphia, Philadelphia, PA, United States <sup>10</sup>Pathology and Laboratory Medicine, Hospital of the University of Pennsylvania, Philadelphia, PA, United States <sup>11</sup>Division of Oncology and Neurology, British Columbia Children's Hospital, Vancouver, BC, Canada <sup>12</sup>Department of Pathology, British Columbia Children's Hospital, Vancouver, BC, Canada <sup>13</sup>The Preston Robert Tisch Brain Tumor Center, Duke University, Durham, NC, United States <sup>14</sup>Preston A. Wells Center for Brain Tumor Therapy, McKnight Brain Institute, Department of Neurosurgery, University of Florida, Gainesville, FL, United States <sup>15</sup>Department of Neurosurgery, University of Iowa Hospitals and Clinics, Iowa City, IA, United States <sup>16</sup>Erasmus University Medical Center, Rotterdam, the Netherlands <sup>17</sup>Division of Pediatric Hematology/Oncology, Mayo Clinic, Rochester, MN, United States <sup>18</sup>Department of Laboratory Medicine and Pathology, Mayo Clinic, Rochester, MN, United States <sup>19</sup>Cancer and Blood Disorders Center, Seattle Children's Hospital, Seattle, WA, United States <sup>20</sup>Department of Neurosurgery, Chonnam National University Research Institute of Medical Sciences, Chonnam National University Hwasun Hospital and Medical School, Hwasun-gun, Chonnam, South Korea <sup>21</sup>Division of Neurosurgery, Centro Hospitalar Lisboa Norte, Hospital de Santa Maria, Lisbon, Portugal <sup>22</sup>Developmental Tumor Biology Laboratory, Hospital Sant Joan de Déu, Esplugues de Llobregat, Barcelona, Spain <sup>23</sup>Pediatric Hematology and Oncology; and Institute of Neuropathology, University Medical Center; and Research Institute Children's Cancer Center, Hamburg-Eppendorf, Germany <sup>24</sup>The Health Research Institute of Navarra (IDISNA), Program in Solid Tumors and

Biomarkers, Foundation for the Applied Medical Research, Department of Pediatrics, Clínica Universidad de Navarra, University of Navarra, Pamplona, Navarra, Spain <sup>25</sup>Department of Pathology and Laboratory Medicine, University of Calgary, Calgary, AB, Canada <sup>26</sup>Department of Neurosurgery, University of Debrecen, Medical and Health Science Centre, Debrecen, Hungary <sup>27</sup>Department of Neurological Surgery, Vanderbilt Medical Center, Nashville, TN, United States <sup>28</sup>Center for Cancer and Blood Disorders, Children's National Medical Center, Washington DC, United States <sup>29</sup>Fondazione IRCCS Istituto Nazionale Tumori, Milan, Italy <sup>30</sup>Departments of Pathology, Ophthalmology and Oncology, John Hopkins University School of Medicine, Baltimore, MD, United States <sup>31</sup>Department of Pediatrics, Memorial Sloan Kettering Cancer Center, New York, Ny, United States <sup>32</sup>Division of Pediatric Hematology/Oncology, NYU Langone Medical Center, New York, NY, United States <sup>33</sup>Department of Neurosurgery, David Geffen School of Medicine at UCLA, Los Angeles, CA, United States <sup>34</sup>Dipartimento di Biochimica e Biotechnologie Mediche, University of Naples, Naples, Italy <sup>35</sup>Department of Surgery and Anatomy, Faculty of Medicine of Ribeirão Preto, University of Sao Paulo, Sao Paulo, Brazil <sup>36</sup>Department of Neuropathology, NN Burdenko Neurosurgical Institute, 125047 Moscow, Russia <sup>37</sup>Department of Pathology, St. Jude Children's Research Hospital, Memphis, TN, United States <sup>38</sup>Department of Radiation Oncology, St. Jude Children's Research Hospital, Memphis, TN, United States <sup>39</sup>Neuro-Oncology Branch, National Cancer Institute, Bethesda, MD, United States <sup>40</sup>Clinical Cooperation Unit Neuropathology, German Cancer Research Center (DKFZ), Heidelberg, Germany <sup>41</sup>Department of Pediatric Hematology and Oncology, University Hospital Heidelberg, Heidelberg, Germany <sup>42</sup>Department of Laboratory Medicine and Pathobiology, University of Toronto, Toronto, ON, Canada <sup>43</sup>Center for Cancer Research, National Cancer Institute, Bethesda, MD, United States

## Acknowledgements

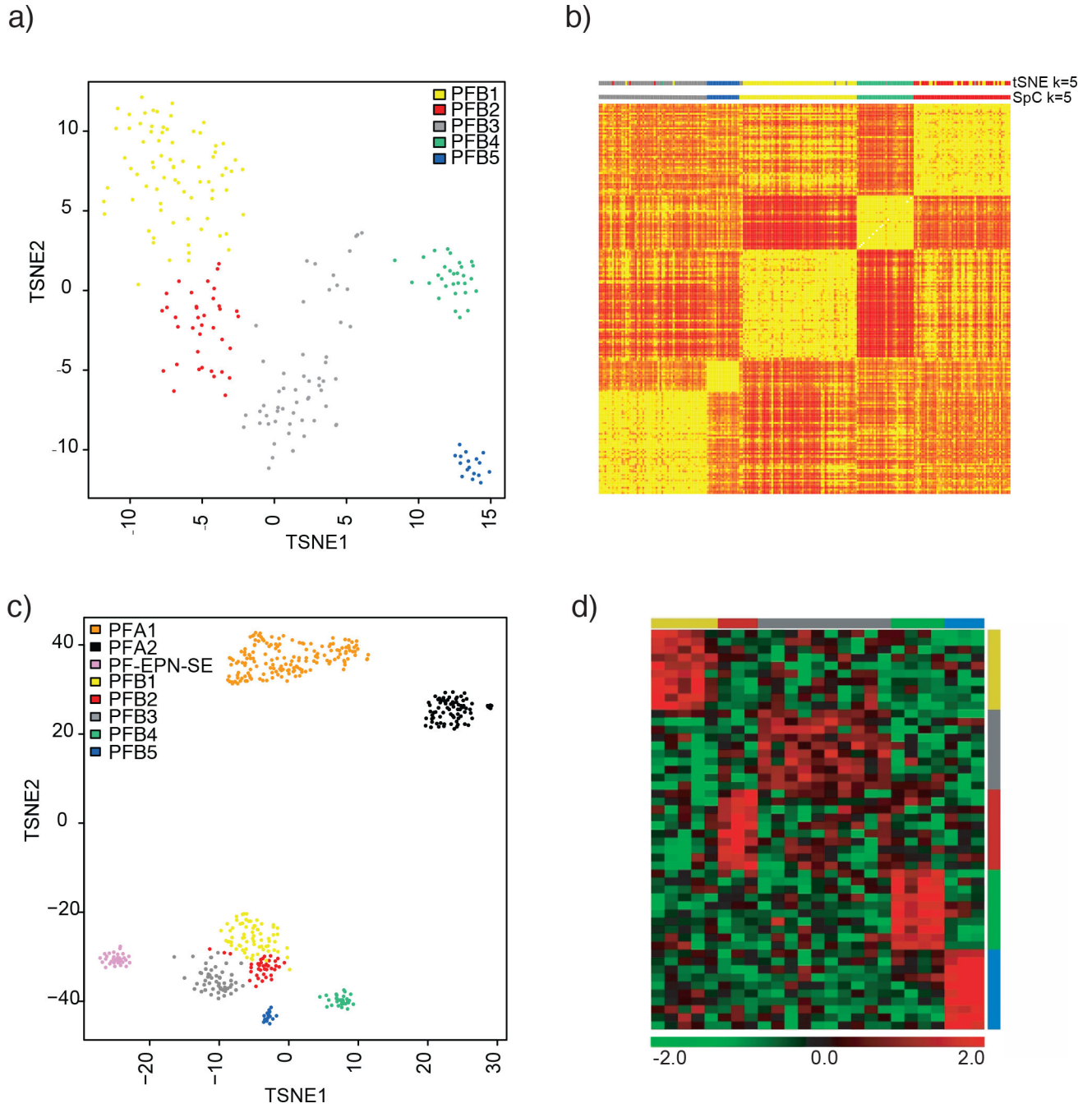
VR is supported by operating funds from the Canadian Institutes of Health Research American Brain Tumor Association, the Garron Family Cancer Center, Meagan's Walk, b.r.a.i.n.child, the Brain Tumour Foundation of Canada and a Collaborative Ependymoma Research Network (CERN) basic science fellowship. FMGC is supported by the Stephen Buttrum Brain Tumor Research Fellowship, granted by Brain Tumor Foundation of Canada. MZ is supported by Garron Family Cancer Center Fellowship, Meagan's Walk Neuro-Oncology Fellowship and Restracom from Research Training Center at The Hospital for Sick Children. MDT is supported by funds from the Garron Family Chair in Childhood Cancer Research at The Hospital for Sick Children and The University of Toronto, and operating funds from the National Institutes of Health (R01CA159859 and R01CA148699), and the Pediatric Brain Tumor Foundation. EB is supported by funds from the Garron Family Chair in Childhood Cancer Research at The Hospital for Sick Children and The University of Toronto. This research was funded in part through the NIH/NCI Cancer Center Support Grant P30 CA008748 to Memorial Sloan Kettering Cancer Center. KWP is supported by a CERN Research Fellowship.

## References

1. Araki A, Chocholous M, Gojo J, Dorfer C, Czech T, Heinzl H et al. (2016) Chromosome 1q gain and tenascin-C expression are candidate markers to define different risk groups in pediatric posterior fossa ependymoma. *Acta neuropathologica communications* 4: 88Doi 10.1186/s40478-016-0349-9 [PubMed: 27550150]

2. Capper D, Jones DTW, Sill M, Hovestadt V, Schrimpf D, Sturm D et al. (2018) DNA methylation-based classification of central nervous system tumours. *Nature* 555: 469–474 Doi 10.1038/nature26000 [PubMed: 29539639]
3. Cavalli FMG, Remke M, Rampasek L, Peacock J, Shih DJH, Luu B et al. (2017) Intertumoral Heterogeneity within Medulloblastoma Subgroups. *Cancer Cell* 31:737–754.e736 Doi 10.1016/j.ccell.2017.05.005 [PubMed: 28609654]
4. Gojo J, Lotsch D, Spiegl-Kreinecker S, Pajtler KW, Neumayer K, Korbel P et al. (2017) Telomerase activation in posterior fossa group A ependymomas is associated with dismal prognosis and chromosome 1q gain. *Neuro Oncol* 19:1183–1194 Doi 10.1093/neuonc/nox027 [PubMed: 28371821]
5. Hovestadt V, Remke M, Kool M, Pietsch T, Northcott PA, Fischer R et al. (2013) Robust molecular subgrouping and copy-number profiling of medulloblastoma from small amounts of archival tumour material using high-density DNA methylation arrays. *Acta Neuropathol* 125: 913–916 Doi 10.1007/s00401-013-1126-5 [PubMed: 23670100]
6. Khatua S, Ramaswamy V, Bouffet E (2017) Current therapy and the evolving molecular landscape of paediatric ependymoma. *Eur J Cancer* 70: 34–41 Doi 10.1016/j.ejca.2016.10.013 [PubMed: 27866097]
7. Kilday JP, Mitra B, Domerg C, Ward J, Andreiuolo F, Osteso-Ibanez T et al. (2012) Copy number gain of 1q25 predicts poor progression-free survival for pediatric intracranial ependymomas and enables patient risk stratification: a prospective European clinical trial cohort analysis on behalf of the Children's Cancer Leukaemia Group (CCLG), Societe Francaise d'Oncologie Pediatrique (SFOP), and International Society for Pediatric Oncology (SIOP). *Clin Cancer Res* 18: 2001–2011 Doi 10.1158/1078-0432.ccr-11-2489 [PubMed: 22338015]
8. Korshunov A, Witt H, Hielscher T, Benner A, Remke M, Ryzhova M et al. (2010) Molecular staging of intracranial ependymoma in children and adults. *J Clin Oncol* 28: 3182–3190 Doi 10.1200/jco.2009.27.3359 [PubMed: 20516456]
9. Mack SC, Agnihotri S, Bertrand KC, Wang X, Shih DJ, Witt H et al. (2015) Spinal Myxopapillary Ependymomas Demonstrate a Warburg Phenotype. *Clin Cancer Res* 21:3750–3758 Doi 10.1158/1078-0432.ccr-14-2650 [PubMed: 25957288]
10. Mack SC, Pajtler KW, Chavez L, Okonechnikov K, Bertrand KC, Wang X et al. (2018) Therapeutic targeting of ependymoma as informed by oncogenic enhancer profiling. *Nature* 553: 101–105 Doi 10.1038/nature25169 [PubMed: 29258295]
11. Mack SC, Witt H, Piro RM, Gu L, Zuyderduyn S, Stutz AM et al. (2014) Epigenomic alterations define lethal CIMP-positive ependymomas of infancy. *Nature* 506: 445–450 Doi 10.1038/nature13108 [PubMed: 24553142]
12. Pajtler KW, Mack SC, Ramaswamy V, Smith CA, Witt H, Smith A et al. (2017) The current consensus on the clinical management of intracranial ependymoma and its distinct molecular variants. *Acta Neuropathol* 133: 5–12 Doi 10.1007/s00401-016-1643-0 [PubMed: 27858204]
13. Pajtler KW, Wen J, Sill M, Lin T, Orisme W, Tang B et al. (2018) Molecular heterogeneity and CXorf67 alterations in posterior fossa group A (PFA) ependymomas. *Acta Neuropathol*: Doi 10.1007/s00401-018-1877-0
14. Pajtler KW, Witt H, Sill M, Jones DT, Hovestadt V, Kratochwil F et al. (2015) Molecular Classification of Ependymal Tumors across All CNS Compartments, Histopathological Grades, and Age Groups. *Cancer Cell* 27: 728–743 Doi 10.1016/j.ccell.2015.04.002 [PubMed: 25965575]
15. Ramaswamy V, Hielscher T, Mack SC, Lassaletta A, Lin T, Pajtler KW et al. (2016) Therapeutic Impact of Cytoreductive Surgery and Irradiation of Posterior Fossa Ependymoma in the Molecular Era: A Retrospective Multicohort Analysis. *J Clin Oncol* 34: 2468–2477 Doi 10.1200/jco.2015.65.7825 [PubMed: 27269943]
16. Ramaswamy V, Taylor MD (2016) Treatment implications of posterior fossa ependymoma subgroups. *Chinese journal of cancer* 35: 93 Doi 10.1186/s40880-016-0155-6 [PubMed: 27846874]
17. Rand V, Prebble E, Ridley L, Howard M, Wei W, Brundler MA, Fee BE, Riggins GJ, Coyle B, Grundy RG (2008) Investigation of chromosome 1q reveals differential expression of members of the S100 family in clinical subgroups of intracranial paediatric ependymoma. *Br J Cancer* 99:1136–1143 Doi 10.1038/sj.bjc.6604651 [PubMed: 18781180]

18. Reimand J, Arak T, Adler P, Kolberg L, Reisberg S, Peterson H, Vilo J (2016) g:Profiler-a web server for functional interpretation of gene lists (2016 update). *Nucleic acids research* 44: W83–89 Doi 10.1093/nar/gkw199 [PubMed: 27098042]
19. Ruda R, Reifenberger G, Frappaz D, Pfister SM, Laprie A, Santarius T et al. (2018) EANO guidelines for the diagnosis and treatment of ependymal tumors. *Neuro Oncol* 20: 445–456 Doi 10.1093/neuonc/nox166 [PubMed: 29194500]
20. Ryall S, Guzman M, Elbabaa SK, Luu B, Mack SC, Zapotocky M, Taylor MD, Hawkins C, Ramaswamy V (2017) H3 K27M mutations are extremely rare in posterior fossa group A ependymoma. *Childs Nerv Syst* 33:1047–1051 Doi 10.1007/s00381-017-3481-3 [PubMed: 28623522]
21. Saeed AI, Sharov V, White J, Li J, Liang W, Bhagabati N et al. (2003) TM4: a free, open-source system for microarray data management and analysis. *BioTechniques* 34: 374–378 [PubMed: 12613259]
22. Sturm D, Witt H, Hovestadt V, Khuong-Quang DA, Jones DT, Konermann C et al. (2012) Hotspot mutations in H3F3A and IDH1 define distinct epigenetic and biological subgroups of glioblastoma. *Cancer Cell* 22: 425–437 Doi 10.1016/j.ccr.2012.08.024 [PubMed: 23079654]
23. Taylor MD, Poppleton H, Fuller C, Su X, Liu Y, Jensen P et al. (2005) Radial glia cells are candidate stem cells of ependymoma. *Cancer Cell* 8: 323–335 Doi 10.1016/j.ccr.2005.09.001 [PubMed: 16226707]
24. Thompson YY, Ramaswamy V, Diamandis P, Daniels C, Taylor MD (2015) Posterior fossa ependymoma: current insights. *Childs Nerv Syst* 31:1699–1706 Doi 10.1007/s00381-015-2823-2 [PubMed: 26351223]
25. Ward S, Harding B, Wilkins P, Harkness W, Hayward R, Darling JL, Thomas DG, Warr T (2001) Gain of 1q and loss of 22 are the most common changes detected by comparative genomic hybridisation in paediatric ependymoma. *Genes Chromosomes Cancer* 32: 59–66 Doi 10.1002/gcc.1167 [PubMed: 11477662]
26. Witt H, Mack SC, Ryzhova M, Bender S, Sill M, Isserlin R et al. (2011) Delineation of two clinically and molecularly distinct subgroups of posterior fossa ependymoma. *Cancer Cell* 20:143–157 Doi 10.1016/j.ccr.2011.07.007 [PubMed: 21840481]



**Figure 1:** Clustering of PFB reveals five distinct subtypes. A) t-SNE plot showing the relative distribution of the five subtypes. B) Heatmap obtained from spectral clustering (SpC) where by yellow represents more similar samples and red represents disparate ones. Color bars at the top indicate the t-SNE cluster at k=5 and the spectral clustering clusters (SpC) at k=5 C) t-SNE plot showing PFB clustered concomitantly with PF-SE and PFA. D) Heatmap representing the expression levels of the ten most differentially expressed genes per subtype.

Each column represents one sample, and each lane represents one gene. Gene expression levels are represented by a color scale as indicated.

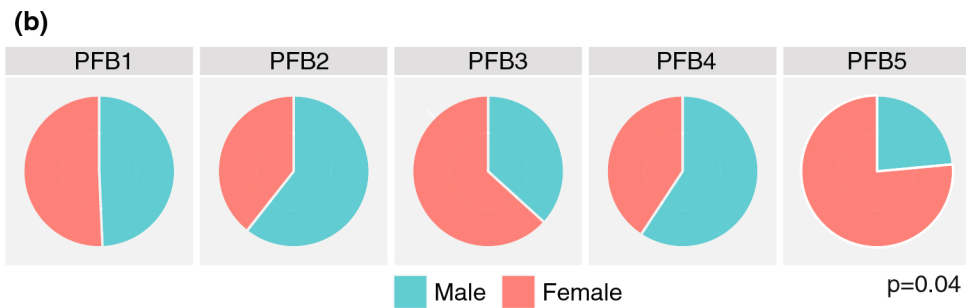
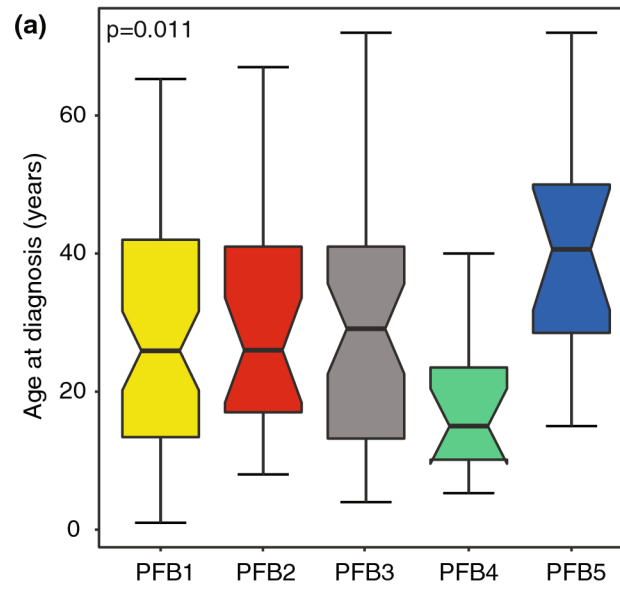
Author Manuscript

Author Manuscript

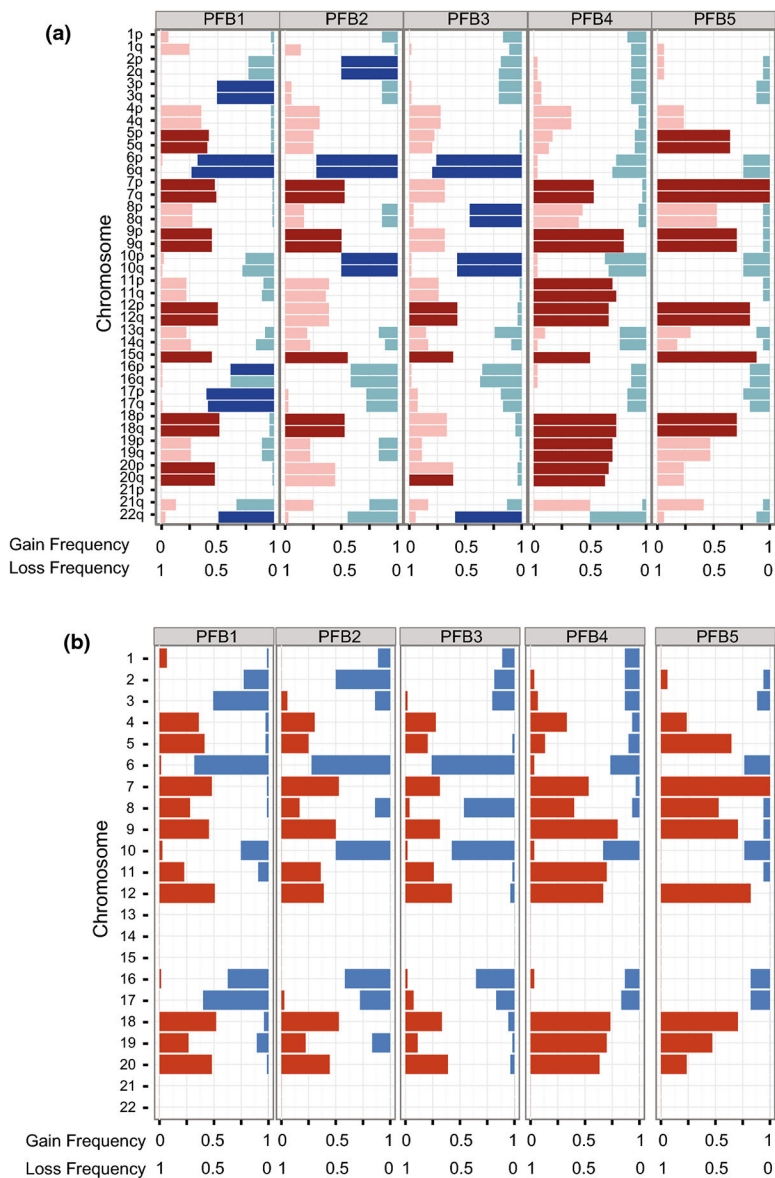
Author Manuscript

Author Manuscript

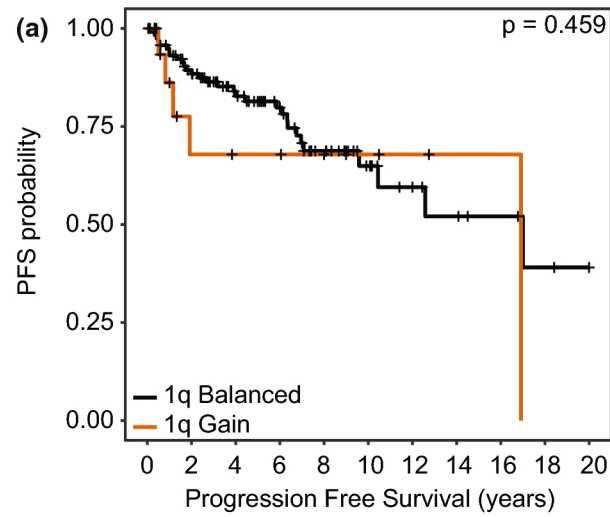




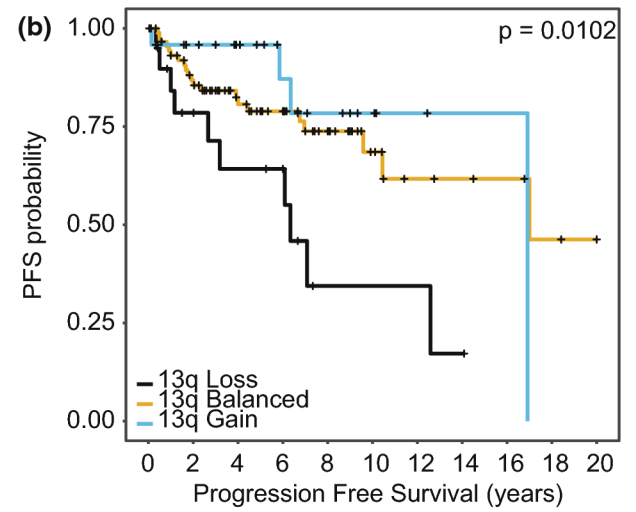
**Figure 2:** Clinical characteristics across PFB subtypes. A) Boxplot of age at diagnosis across PFB subtypes. B) Frequency of male and female gender within the five subtypes. P-values for age determined using the Kruskal Wallis test and frequency of gender using the Fisher Exact Test.



**Figure 3:** Arm-level cytogenetic events across PFB subtypes. A) Frequency and significance of arm-level gains and losses across the five PFB subtypes. Darker bars show significant arm level events (q-value < 0.1, chi-squared test). B) Frequency and significance of whole chromosome gain and losses across the five PFB subtypes. Darker bars show significant arm level events (q-value < 0.1, chi-squared test).



No. at risk		0	2	4	6	8	10	12	14	16	18	20
<b>Gain 1q</b>		20	7	6	6	5	3	2	1	1	0	0
<b>No gain</b>		117	93	66	51	28	16	10	7	5	3	2



No. at risk		0	2	4	6	8	10	12	14	16	18	20
<b>13q gain</b>		24	19	15	10	7	4	2	1	1	0	0
<b>13q bal</b>		91	67	47	38	23	12	7	6	5	3	2
<b>13q loss</b>		20	12	9	8	2	2	2	1	0	0	0

**Figure 4:**  
 Progression Free Survival stratified by A)1q gain and B)13q status. p-values determined using the log-rank test.

**Table 1:**

Multivariable cox proportional hazards model of survival across PFB ependymoma

	<b>HR</b>	<b>95% CI</b>	<b>p-value</b>
<i>Progression Free Survival</i>			
Age	0.98	0.96–1.01	0.24
Male Gender	0.70	0.33–1.48	0.35
Non-GTR	4.48	1.93–9.63	<b><math>3.8 \times 10^{-4}</math></b>
Upfront Radiation	0.36	0.15–0.85	<b>0.020</b>
Subtype			
PFB2 vs PFB1	0.78	0.25–2.27	0.62
PFB3 vs PFB1	0.64	0.26–1.86	0.48
PFB4 vs PFB1	0.56	0.13–2.12	0.37
PFB5 vs PFB1	0.84	0.14–4.12	0.75
1q gain	2.73	1.01–7.37	<b>0.046</b>
13q loss	3.88	1.54–9.80	<b>0.0041</b>

GTR-Gross Total Resection