



Phosphatidylserine synthesis is essential for viability of the human fungal pathogen *Cryptococcus neoformans*

Received for publication, November 15, 2018, and in revised form, December 28, 2018. Published, Papers in Press, January 2, 2019, DOI 10.1074/jbc.RA118.006738

Paulina Konarzewska[‡], Yina Wang[‡], Gil-Soo Han^{§¶}, Kwok Jian Goh^{||}, Yong-Gui Gao^{||}, George M. Carman^{§¶}, and Chaoyang Xue^{‡§**1}

From the [‡]Public Health Research Institute and ^{**}Department of Microbiology, Biochemistry and Molecular Genetics, New Jersey Medical School, Rutgers University, Newark, New Jersey 07103, the [§]Rutgers Center for Lipid Research and [¶]Department of Food Science, Rutgers University, New Brunswick, New Jersey 08901, and the ^{||}School of Biological Sciences, Nanyang Technological University, Singapore 117597, Singapore

Edited by F. Peter Guengerich

Phospholipids are an integral part of the cellular membrane structure and can be produced by a *de novo* biosynthetic pathway and, alternatively, by the Kennedy pathway. Studies in several yeast species have shown that the phospholipid phosphatidylserine (PS) is synthesized from CDP-diacylglycerol and serine, a route that is different from its synthesis in mammalian cells, involving a base-exchange reaction from preexisting phospholipids. Fungal-specific PS synthesis has been shown to play an important role in fungal virulence and has been proposed as an attractive drug target. However, PS synthase, which catalyzes this reaction, has not been studied in the human fungal pathogen *Cryptococcus neoformans*. Here, we identified and characterized the PS synthase homolog (*Cn Cho1*) in this fungus. Heterologous expression of *Cn CHO1* in a *Saccharomyces cerevisiae cho1Δ* mutant rescued the mutant's growth defect in the absence of ethanolamine supplementation. Moreover, an *Sc cho1Δ* mutant expressing *Cn CHO1* had PS synthase activity, confirming that the *Cn CHO1* encodes PS synthase. We also found that PS synthase in *C. neoformans* is localized to the endoplasmic reticulum and that it is essential for mitochondrial function and cell viability. Of note, its deficiency could not be complemented by ethanolamine or choline supplementation for the synthesis of phosphatidylethanolamine (PE) or phosphatidylcholine (PC) via the Kennedy pathway. These findings improve our understanding of phospholipid synthesis in a pathogenic fungus and indicate that PS synthase may be a useful target for antifungal drugs.

Cryptococcus neoformans is a human fungal pathogen and the leading cause of life-threatening fungal meningoencephalitis, especially in immunocompromised individuals (1, 2). It is an environmental organism that infects humans via the respiratory tract to cause pulmonary cryptococcosis, followed by homogeneous dissemination to the central nervous system to

cause meningitis (3). Despite its clinical significance, treatment options for invasive cryptococcosis are extremely limited. Currently, an acute infection is commonly treated with amphotericin B or azoles in combination with 5-flucytosine (4). However, both treatment courses have serious drawbacks: amphotericin B produces toxic side effects, whereas triazoles are fungistatic, which can promote the emergence of drug resistance. The main therapeutic challenge in developing new antifungal agents is that both fungi and their mammalian hosts are eukaryotes and therefore contain similar cellular machinery. Hence, identification and characterization of fungal-specific enzymes that are important for fungal survival, growth, or virulence could identify valuable potential drug targets.

Phospholipids are an integral part of eukaryotic cell membrane and are asymmetrically distributed across the bilayer. In general, phosphatidylserine (PS)² and phosphatidylethanolamine (PE) are mostly restricted to the cytoplasmic leaflet of the membrane, whereas phosphatidylcholine (PC) and sphingolipids are mainly concentrated in the exocytosolic leaflet (5, 6). The lipid asymmetry creates two distinct membrane surfaces with very different adhesive properties. Among them, PS is the most abundant negatively charged phospholipid in eukaryotic membranes. Its covalent attachment of serine to the phosphate gives PS a net negative charge on the head group (7, 8). A high PS concentration in the cytoplasmic leaflet of the plasma membrane in mammals is essential for targeting and function of several intracellular signaling proteins and activation of specific kinases, such as protein kinase C (6, 9). Translocation of PS to the exocytosolic leaflet of the membrane could be detrimental to cell viability, because macrophages recognize cell-surface PS as a phagocytic signal to engulf cells by binding to the exposed PS (8, 10, 11). In mammals and some parasites (*e.g. Trypanosoma brucei*), PS is generated by exchanging serine for choline in PC and for ethanolamine in PE by the activity of PS synthases *PSS1* and *PSS2*, respectively (12, 13). In yeast, however, PS is synthesized from CDP-diacylglycerol (CDP-DAG)

This work was supported in part by National Institutes of Health Grants R01AI123315 (to C. X.) and R37GM028140 (to G. M. C.). The authors declare that they have no conflicts of interest with the contents of this article. The content is solely the responsibility of the authors and does not necessarily represent the official views of the National Institutes of Health.

This article contains Figs. S1–S4 and Tables S1–S2.

¹ To whom correspondence should be addressed: Public Health Research Institute, Rutgers University, ICPH Bldg., Rm. W250H, 225 Warren St., Newark, NJ 07103. Tel.: 973-854-3218; E-mail: xuech@njms.rutgers.edu.

² The abbreviations used are: PS, phosphatidylserine; PE, phosphatidylethanolamine; PC, phosphatidylcholine; DAG, diacylglycerol; SC, synthetic complete; H₂DCFDA, dichlorodihydrofluorescein diacetate; DAPI, 4',6'-diamidino-2-phenylindole; ROS, reactive oxygen species; 1D-TLC, one-dimensional thin-layer chromatography; ER, endoplasmic reticulum; qRT, quantitative RT; BCS, bathocuproinedisulfonic acid.

Phosphatidylserine synthesis is essential in *Cryptococcus*

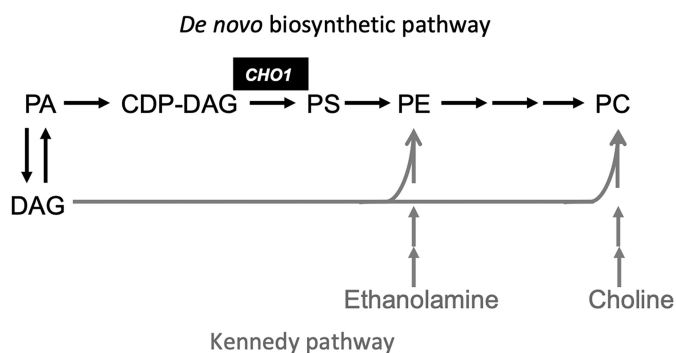


Figure 1. Model of fungal phospholipid synthesis. In this model, PE and PC can be synthesized either by utilizing ethanolamine and choline or by converting PS into PE. PS, however, can only be synthesized from CDP-DAG and serine by using the PS synthase Cho1. PA, phosphatidate.

and serine by the fungal-specific PS synthase enzyme Cho1 (14–16).

Thus far, the role of Cho1 has been investigated in *Saccharomyces cerevisiae* and *Candida albicans*. The *S. cerevisiae cho1* mutant (*Sc cho1Δ*) is viable, but because it is unable to synthesize PS, which serves as a substrate for the *de novo* synthesis of PE and PC, the *Sc cho1Δ* mutant can only grow if ethanolamine or choline is exogenously supplied, enabling PE and PC synthesis via the Kennedy pathway (Fig. 1) (17). The *Sc CHO1* gene expression is negatively regulated by inositol and choline availability (18). The *C. albicans cho1Δ/Δ* (*Ca cho1Δ/Δ*) mutant can only grow when supplemented with ethanolamine (15), but it cannot be rescued by choline on solid medium and displays poor growth when supplemented with choline in liquid medium. In addition, the *Ca cho1Δ/Δ* mutant is avirulent in a mouse model of systemic candidiasis, suggesting that the PS synthase homolog in *C. albicans* is necessary for virulence and therefore represents a potential new drug target (15). However, the function and importance of PS synthase in *C. neoformans* development and pathogenesis have not been analyzed yet.

Our previous study revealed that *C. neoformans* lipid flippase, which translocates certain phospholipids (PS and PE) from the exocytosolic leaflet to the cytoplasmic leaflet to maintain the asymmetrical distribution of phospholipids, is essential for virulence in a murine model of cryptococcosis. It is also required for the inherent resistance of this fungus to echinocandin drugs. Mutants of the lipid flippase regulatory subunit Cdc50 showed accumulation of PS on the outer layer of the plasma membrane, were hypersensitive to macrophage killing, and showed reduced virulence (19). We hypothesized that loss of Cdc50 prevents PS translocation, leading to increased PS exposure on the cell surface, which may promote macrophage recognition and killing of such cells, because PS accumulation on the cell surface has been shown to serve as a phagocytic signal for macrophages (20). The overall reduced phospholipid level in the *cdc50Δ* mutant was also observed in a separate study (21). Therefore, we were interested in further exploring the role of PS in fungal development and virulence.

In this study, we characterized the only Cho1 homolog in *C. neoformans* (*Cn Cho1*) and confirmed that it functions as a PS synthase. We were unable to generate a deletion mutant of *Cn CHO1*, revealing that *Cn Cho1* is essential for *C. neoformans*

viability, despite the presence of an active Kennedy pathway in this fungus. We further investigated the mechanism of *Cn Cho1* essentiality and revealed that PS is likely an essential phospholipid for this fungus. The essentiality of the fungal-specific PS synthase in *C. neoformans* warrants further investigation of this enzyme as a potential drug target.

Results

Cho1 homolog in *C. neoformans* is a PS synthase

Our previous study showed that deletion of the regulatory subunit of the lipid flippase Cdc50 leads to the accumulation of PS on the outer leaflet of the bilayer membrane in *Cryptococcus*, which appears to contribute to the loss of fungal virulence (19). Therefore, we tried to generate a mutant strain lacking PS to better understand the role of PS in fungal virulence. This led us to identify the only homolog of the *S. cerevisiae* PS synthase Cho1 protein.

The *C. neoformans Cho1* (*Cn Cho1*) protein shares high amino acid sequence identity with the known PS synthases in *S. cerevisiae* (*Sc Cho1*) and *C. albicans* (*Ca Cho1*). All of them share the conserved sequence of CDP-diacylglycerol–serine *O*-phosphatidyltransferase (DGX₂ARX_{7,8}GX₃DX₃D). Protein secondary structure analysis also indicated that all three are integral membrane proteins with multiple transmembrane domains, albeit with some differences in the number and the topology of potential transmembrane regions (Fig. 2).

To confirm the localization of *Cn Cho1* protein in *C. neoformans*, we generated a *Cn Cho1*:mCherry fusion construct and expressed this fusion protein in *C. neoformans* WT H99. Our results showed that the fluorescent signal mostly localized to the ER membrane (Fig. 3A and Fig. S1). We then purified the membrane fraction by centrifugation and treated it with either PBS, Triton X-100, or 1 M NaCl to determine whether *Cn Cho1* is an integral membrane protein or a membrane-binding protein (Fig. 3B). Our results clearly showed that *Cn Cho1* was solubilized by Triton X-100, but not by high salt, indicating that it is an integral membrane protein.

To confirm the *Cn Cho1* protein is a PS synthase, we expressed *Cn CHO1* gene in a *S. cerevisiae* strain carrying a deletion of *Sc CHO1* (*Sc cho1Δ*). As expected, the *Sc cho1Δ* mutant was an ethanolamine auxotroph and could not grow on SC medium lacking ethanolamine (Fig. 4A). We observed that heterologous expression of *Cn CHO1* in this mutant background fully complemented its growth defect, indicating that *Cn CHO1* is likely a PS synthase (Fig. 4A). We then measured the PS synthase activity in cell lysates directly using [3-³H]serine as described previously (16, 22, 23). Our results showed that the *Sc cho1Δ* mutant completely lacked PS synthase activity and that expressing *Cn CHO1* in this mutant largely restored its PS synthase activity (Fig. 4B), supporting the conclusion that *Cn Cho1* has PS synthase activity.

In *S. cerevisiae*, extracellular inositol negatively regulates *Sc CHO1* expression (18). Thus, we examined *Cn CHO1* gene expression in the presence of various inositol concentrations to determine whether it is also regulated by inositol. Indeed, our results indicated that *Cn CHO1* transcription is repressed by a high level of inositol and induced or derepressed as the inositol

Phosphatidylserine synthesis is essential in *Cryptococcus*

is sufficient to support fungal growth. The further gene suppression due to addition of 1 mM CuSO_4 may be sufficient to abolish the Cho1 enzyme activity, leading to growth arrest.

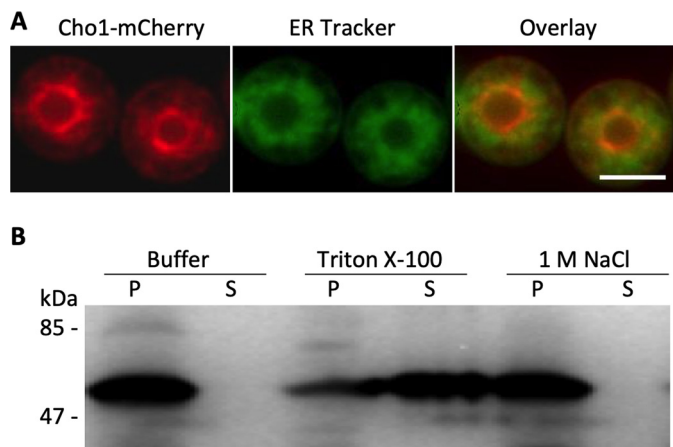


Figure 3. *Cn* Cho1 is an integral membrane protein that primarily localizes to the endoplasmic reticulum. *A*, Cho1 protein in *C. neoformans* localizes to the ER membrane in a similar manner to Cho1 from other yeasts. In this strain, the *CHO1* gene is fused with an mCherry tag at its C terminus, and its expression is under the control of the *C. neoformans* actin promoter. ER tracker was used to visualize the ER membrane. Among over 100 cells analyzed, ~99% showed co-localization of Cho1 protein with the ER tracker. Additional data were shown in Fig. S1. Scale bar, 10 μm . *B*, membrane protein separation assay confirms that Cho1 is an integral membrane protein. As described under "Experimental procedures," a total membrane fraction obtained from cells expressing Cho1 was extracted with 1 \times PBS buffer, 1% Triton X-100, or salt (1 M NaCl). Following ultracentrifugation, equivalent amounts of the insoluble pellet (*P*) and the supernatant (*S*) were analyzed by Western blotting using RFP-tag antibody.

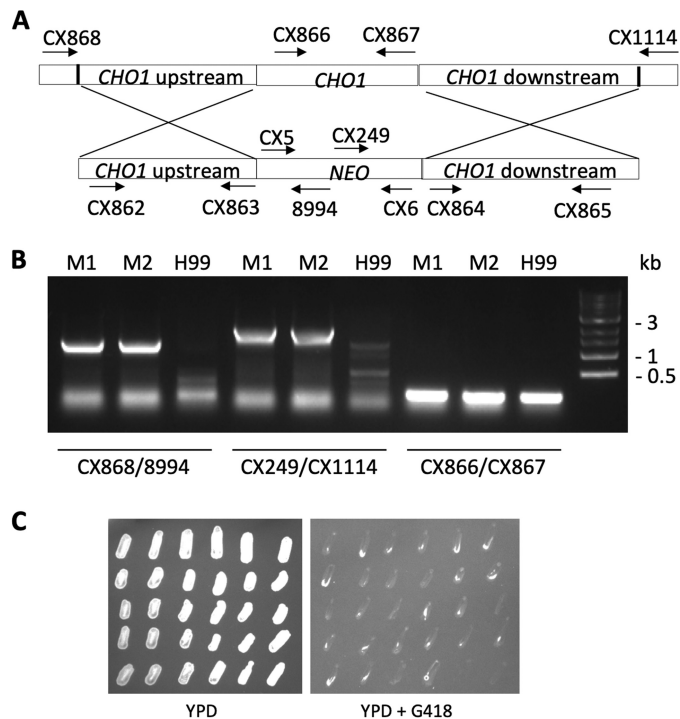


Figure 5. *Cn* Cho1 is an essential protein for fungal viability. *A* *Cn* *CHO1/cho1* Δ heterozygous mutant was generated by deleting one *Cn* *CHO1* allele in a diploid strain AI187 and undergoing sporulation on mating medium. Spores were isolated and grown on YPD or YPD + G418. Among the 28 spores isolated, none of them grew on YPD containing G418, indicating that they are all WT alleles. *A*, schematic of *Cn* *CHO1* deletion strategy. CX numbers indicate primers used to screen the mutants. Detailed description of each primer can be found in Table S1. *B*, PCR results of the mutant screen. *M1*, mutant 1; *M2*, mutant 2. *C*, growth of progeny colonies on YPD and YPD containing G418 after 3 days of incubation.

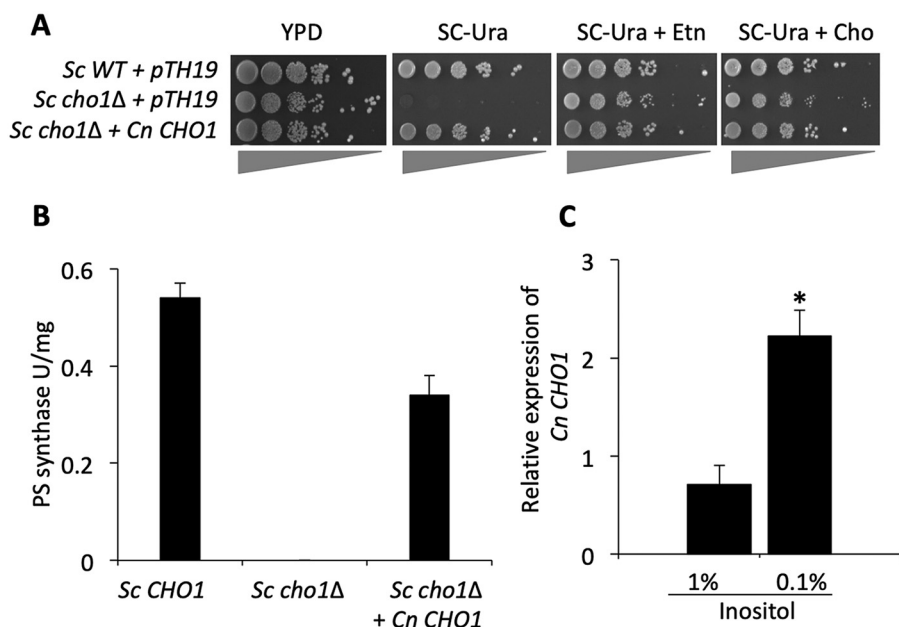


Figure 4. *C. neoformans* Cho1 is a PS synthase, and its expression is regulated by inositol. *A*, expression of *Cn* *CHO1* gene fully complements *S. cerevisiae* (*Sc*) *cho1* Δ mutant auxotrophic for ethanolamine (*Etn*). WT *S. cerevisiae* can grow well in the absence of ethanolamine unlike the *Sc* *cho1* Δ mutant transformed with pTH19 (empty vector), which is ethanolamine auxotrophic. *Sc* *cho1* Δ expressing *Cn* *CHO1* restores growth in the absence of ethanolamine, indicating that *C. neoformans* *CHO1* gene can fully complement *Sc* *CHO1* gene function. *B*, enzymatic analysis of *Saccharomyces* strains for PS synthase activity. Cho1 enzyme activity in WT *S. cerevisiae* was absent in *Sc* *cho1* Δ strain. This activity was successfully restored when the *Sc* *cho1* Δ strain was transformed with *Cn* *CHO1* gene indicating that it is a PS synthase. The assay was performed in duplicate and repeated twice. *C*, *Cn* *CHO1* gene expression is regulated by inositol. *CHO1* gene expression is suppressed in the presence of 1% inositol as compared with its expression in the presence of 0.1% inositol indicating that phospholipid precursor inositol negatively regulates *CHO1* gene expression. The analysis of *CHO1* gene expression was performed in triplicate, and the two-tail *t* test was used for statistical analysis (* indicates $p < 0.001$).

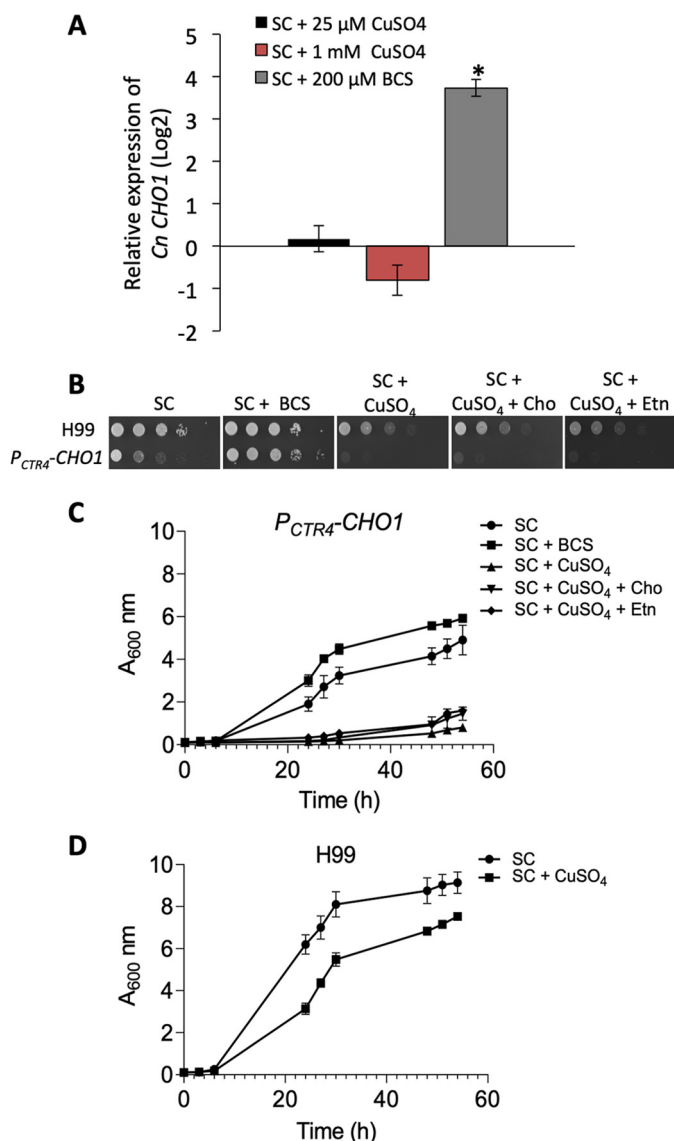


Figure 6. Inhibiting *CHO1* expression leads to growth arrest independent of the Kennedy pathway. *A*, qRT-PCR analysis of P_{CTR4} -*CHO1* expression under different medium conditions. *CHO1* gene expression was performed in triplicate, and two-tail *t* test was used for statistical analysis (* indicates $p < 0.0001$). *B*, growth rates of *C. neoformans* WT H99 and P_{CTR4} -*CHO1* cells on SC agar medium with indicated supplements. Addition of 1 mM ethanolamine or 1 mM choline did not rescue cell growth. *C*, growth of P_{CTR4} -*CHO1*-expressing cells in SC liquid medium with indicated supplements. *D*, growth of H99 in SC medium in the presence or absence of 1 mM CuSO_4 . Each growth assay was done in triplicate and repeated at least twice.

The Kennedy pathway in *C. neoformans* is active

In *S. cerevisiae*, phospholipids such as PE and PC can be produced either by decarboxylation of PS or by utilizing ethanolamine and choline via the Kennedy pathway (Fig. 1) (17). Therefore, *S. cerevisiae cho1Δ* mutant is ethanolamine and choline auxotrophic and is still viable when supplemented with ethanolamine or choline. We investigated whether ethanolamine or choline could also rescue the growth arrest of the P_{CTR4} -*CHO1* strain under conditions that repressed *CHO1*. Interestingly, we found that adding 1 mM ethanolamine or 1 mM choline did not rescue the growth of the P_{CTR4} -*CHO1* strain under inhibition conditions (Fig. 6, *B* and *C*). One possibility for this lack of rescue is that the Kennedy pathway may be inactive

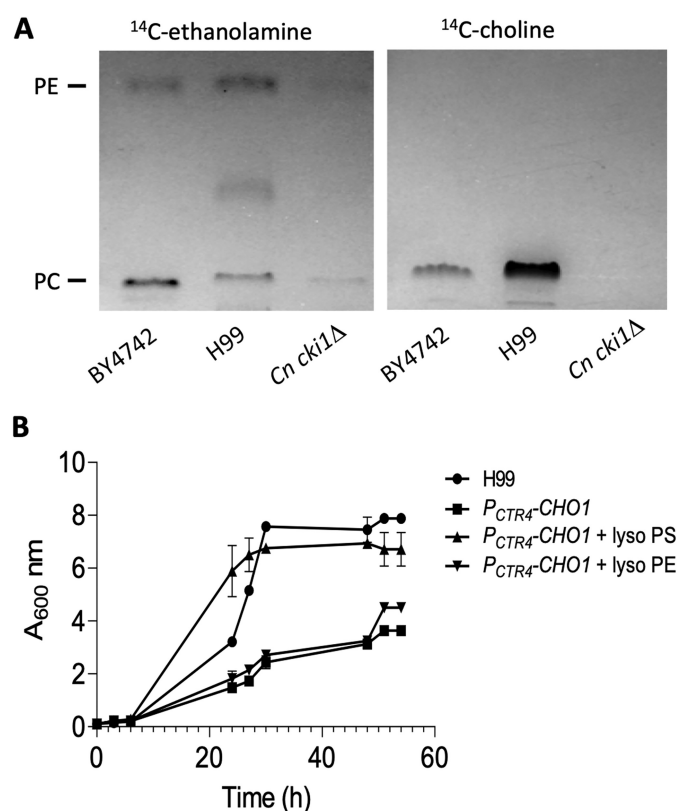


Figure 7. Kennedy pathway is active, and PS is essential in *C. neoformans*. *A*, cultures of *S. cerevisiae* WT strain BY4742, *C. neoformans* WT strain H99, and its *Cn cki1Δ* (predicted *Sc CK1* homolog) were cultured in SC medium with supplement of 10 μCi [^{14}C]ethanolamine or [^{14}C]choline. The production of PE and PC was detected by the radioactive signal in the 1D-TLC analysis. Purified PE and PC standards were purchased from Avanti Lipids. Positions of PE and PC were determined using iodine staining. 1D-TLC assay was repeated multiple times with identical results. *B*, lyso-PS rescued the growth arrest of P_{CTR4} -*CHO1* strain under inhibitory conditions. H99 and P_{CTR4} -*CHO1* strains were cultured in SC medium containing 1 mM CuSO_4 and 1% Nonidet P-40, in the presence or absence of 50 μM lyso-PE or lyso-PS for 60 h at 30 °C with shaking. Growth rate was determined by $A_{600\text{ nm}}$ at different time points. Each growth assay was done in a triplicate and repeated at least twice.

in *C. neoformans*. To test this possibility, we monitored PE and PC production by using [^{14}C]ethanolamine and [^{14}C]choline in a 1D-TLC analysis. Our data showed that both *C. neoformans* WT H99 and *S. cerevisiae* WT BY4742 could produce PE and PC from ethanolamine and choline, respectively, indicating that the Kennedy pathway is active in *C. neoformans* (Fig. 7*A*). However, it remains unclear as to how much PE and PC is made using this pathway in *C. neoformans*. The *C. neoformans* mutant of the *CK11/EK11* homolog (CNAG_04408) could still produce PE but could not produce PC (Fig. 7*A*), consistent with a role of this protein in the PC-producing branch of the Kennedy pathway.

PS is essential for *Cryptococcus* cell viability

Another possibility for *Cn CHO1* essentiality is that PS is essential for viability in *C. neoformans*. Although PE and PC can be produced by both the *de novo* PS synthetic pathway and the Kennedy pathway, PS can only be produced via PS synthase (*Cho1*). Therefore, we supplemented the growth medium with 1 mM lyso-PS and examined whether lyso-PS (derivative of phosphatidylserine with one fatty acid chain that rapidly incor-

Phosphatidylserine synthesis is essential in *Cryptococcus*

porates into the cells and is converted to PS) could rescue the growth arrest induced by CuSO_4 . Indeed, we observed significant rescue of growth defect by lyso-PS but not by lyso-PE (Fig. 7B). This result indicates that PS is essential for *Cryptococcus* viability.

Cho1 is essential for normal mitochondrial function

Mitochondria are essential organelles as they supply the cell with energy. Furthermore, mitochondria protect the cell against reactive oxygen species (ROS), as disruption of the electron transport chain leads to an increase in ROS, which in turn damages nucleic acids, proteins, and lipids, eventually leading to cell death (28, 29). Because the mitochondrial membrane is composed of lipids, including PS, PE, and PC, and *Sc* Cho1 has been shown to play a role in mitochondria function (30, 31), we hypothesized that *Cn* CHO1 may play an important role in mitochondrial function by contributing to lipid homeostasis in the mitochondrial membrane. To test our hypothesis, we first used MitoTracker Red FM to examine whether reduced levels of *Cn* CHO1 expression perturb mitochondrial membrane potential. The results by confocal microscopy showed that in the presence of CuSO_4 , P_{CTR4} -CHO1 strain was unable to retain the MitoTracker Red FM, whereas in the presence of BCS or SC medium alone, this dye accumulated in the mitochondria (Fig. 8A and Fig. S4). To determine whether P_{CTR4} -CHO1 strain lacked mitochondria, yeast mitochondrial DNA (mtDNA) was examined using DAPI. Mitochondrial DNA staining using DAPI indicated that this mitochondrial dysfunction was not due to the lack of mitochondria or damage to mtDNA, as P_{CTR4} -CHO1 strain treated with CuSO_4 still showed the mtDNA signal (Fig. 8B and Fig. S4). We also determined the cell viability after CuSO_4 treatment for 0, 2, and 4 h by measuring the yeast CFU of treated cells, and we found that the majority of the cell populations were still viable (Table S2). These data support our hypothesis that Cho1 is essential to maintain healthy mitochondria by helping maintain mitochondrial membrane integrity.

Perturbed mitochondrial respiratory chain may lead to increased generation of ROS (29). Therefore, we used the ROS indicator dye H_2DCFDA to monitor ROS generation. After a 2-h incubation in the presence of CuSO_4 , BCS, or SC medium alone, there was no significant change in ROS generation in P_{CTR4} -CHO1 and H99 strain. However, the ROS level significantly increased in the P_{CTR4} -CHO1 strain as compared with H99 after 4 and 6 h of incubation (Fig. 8C). These data demonstrate that *Cn* Cho1 plays an important role in *C. neoformans* mitochondrial function, and mitochondrial dysfunction likely contributes to the lethality of *Cn* Cho1.

Discussion

In this study, we have identified and characterized the *Cn* Cho1 protein, the sole homolog of PS synthase homolog in *C. neoformans*. We have shown that heterologous expression of *Cn* CHO1 in the *S. cerevisiae* *cho1* Δ mutant fully complements the PS synthase activity, confirming that *Cn* Cho1 is a PS synthase. We further found that the *Cryptococcus* PS synthase is essential for fungal viability, despite the existence of an active Kennedy pathway to produce PE and PC. Our results demon-

strated that PS is essential for fungal cell viability, and although the main reason for *Cn* Cho1 essentiality is not fully understood, we did show that it contributes to mitochondrial function.

Fungal Cho1 homologs have been shown to play an important role in cell signaling and synthesis of major cellular phospholipids, but this is the first report indicating that Cho1 is essential for cell viability in a fungus. In *S. cerevisiae*, the *cho1* Δ mutant is viable but auxotrophic for ethanolamine. The *Sc* *cho1* Δ mutant grows normally in the presence of ethanolamine or choline, suggesting that the Kennedy pathway can support lipid production in this organism (32). The *cho1* Δ /*cho1* Δ null mutant is also viable in *C. albicans* (15). Interestingly, although the *in vitro* growth of this mutant can be rescued by addition of ethanolamine, Cho1 is essential for *Candida* virulence in a murine infection model and has thus been proposed as a potential drug target (15, 33). A recent study further demonstrated that the mutant cells might not be able to acquire sufficient ethanolamine from the host, leading to the avirulent phenotype (34). Why Cho1 is essential in *C. neoformans* remains unclear. Our 1D-TLC analysis showed that PE and PC can be produced by cells supplemented with choline or ethanolamine in culture medium, indicating that the Kennedy pathway remains active in *C. neoformans*. These data suggest that the essentiality of Cho1 in *C. neoformans* is not due to a lack of PE and PC production via the Kennedy pathway, although we do not know how much of these lipids are synthesized through this pathway in this fungus.

Using the *CTR4*-inducible promoter system, we were able to knock down the PS synthase activity to a level that prevents cell growth. The growth arrest of the P_{CTR4} -CHO1-expressing strain in the presence of CuSO_4 was rescued by the addition of lyso-PS, but not lyso-PE, indicating that PS is essential for *C. neoformans* and that the inability to produce PS is the reason for *Cn* *cho1* Δ mutant lethality. This is consistent with the conclusion that *C. neoformans* can make PE and PC via the Kennedy pathway but that PS has to be synthesized using PS synthase Cho1. PS can be converted to PE by PS decarboxylases Psd1 and Psd2. This step is generally considered irreversible in fungi such as *S. cerevisiae* and is likely to be irreversible in *C. neoformans* as well.

PS plays several important cellular roles. Besides being a key component of the lipid bilayer membrane, PS also functions as a phagocytosis-inducing signal for macrophages and a signal to trigger inflammatory activity during infection (8, 10, 11). Because the *Cn* *cho1* Δ mutant is inviable, we could not test the function of Cho1 in host-pathogen interactions. Based on our results, it is likely that PS is an essential part of the cell membrane in *C. neoformans*. The importance of PS in *C. neoformans* is also underscored by the phenotype of the lipid flippase *cdc50* Δ mutant, which shows PS accumulation on the extracytoplasmic leaflet of the membrane. This mutant is also defective for fungal virulence and shows increased phagocytosis and killing by macrophages *in vitro* (19).

Another potential role of Cho1 is to maintain mitochondrial integrity and function. The inner and outer yeast mitochondrial membranes are composed of various lipids, including PC, PE, PS, phosphatidylinositol, phosphatidic acid, phosphatidylglyc-

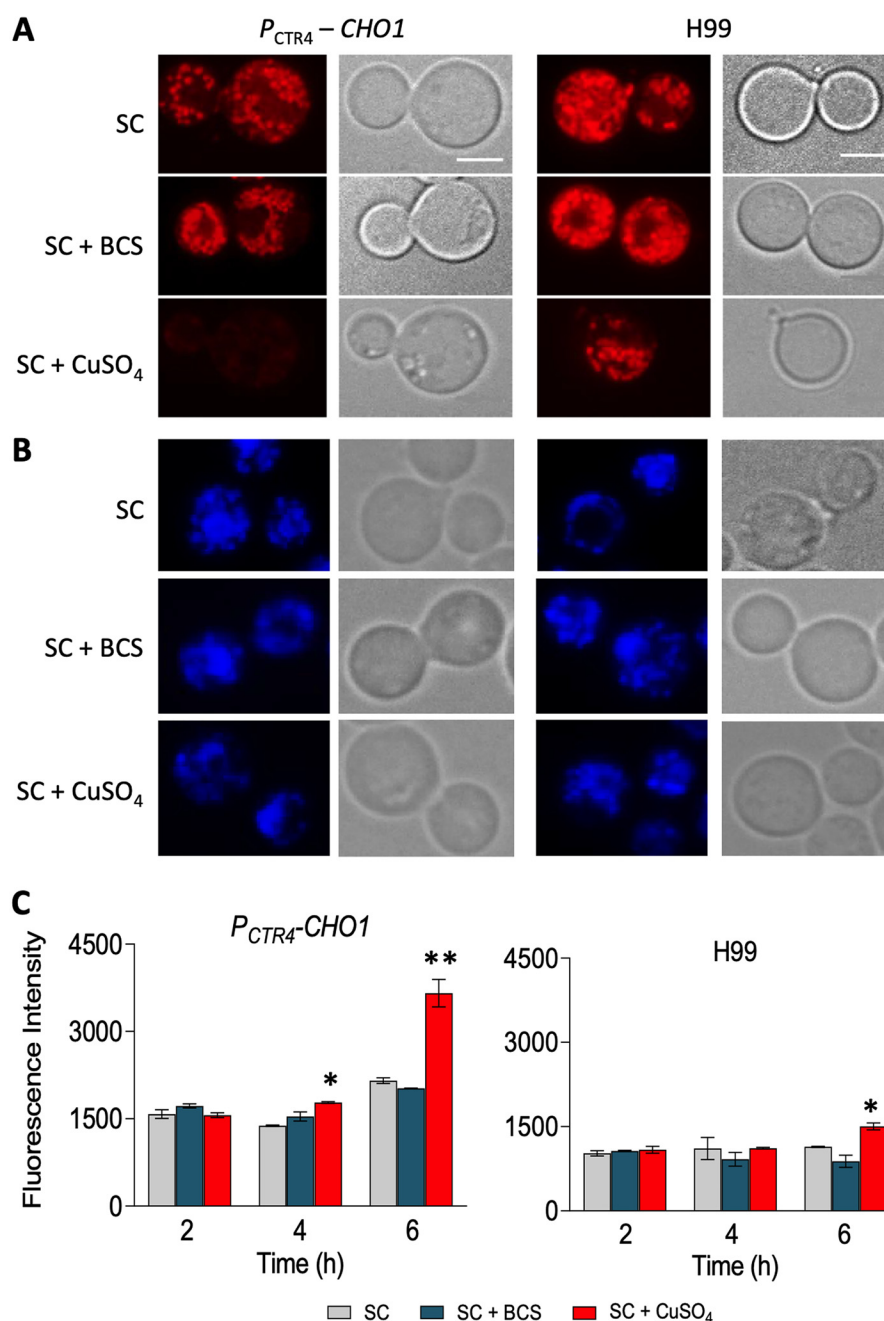


Figure 8. Cho1 is required for mitochondrial function. *C. neoformans* WT H99 and $P_{CTR4}-CHO1$ strains were cultured in SC medium alone and in the presence of 1 mM CuSO₄ or 200 μM BCS for 6 h. Cells were then incubated for 10 min in the presence of MitoTracker Red FM at a concentration 0.2 μM and DAPI at a concentration 1 μg before analyzing the mitochondria and mtDNA under the microscope. Scale bar, 10 μm. Among all the cells examined, 99% of them showed identical co-localization. Images with more cells were shown in Fig. S4. **A**, reduced *CHO1* gene expression in the presence of copper prevents MitoTracker Red FM accumulation into the mitochondria. **B**, mitochondrial DNA stained with DAPI. **C**, reduced *CHO1* gene expression leads to higher levels of intracellular ROS generation. H99 and $P_{CTR4}-CHO1$ strains were grown to log phase at 30 °C, loaded with H₂DCFDA, and exposed to BCS and CuSO₄ for 2, 4, and 6 h. Quantification of flow cytometry indicates that there is a significant increase in ROS generation in the $P_{CTR4}-CHO1$ strain in the presence of CuSO₄ as compared with BCS or SC medium alone at hour 4 and at hour 6. ROS generation is also significantly higher in $P_{CTR4}-CHO1$ as compared with H99 when treated with CuSO₄ at hour 4 and at hour 6. * indicates $p < 0.05$ and ** indicates $p < 0.01$ based on two-tail *t* test.

erol, and cardiolipin. Two abundant phospholipids, PC and PE, are mainly synthesized from PS (29–31). Although distributions of these lipids in the inner and outer mitochondrial membranes differ, a change in mitochondrial lipid homeostasis can lead to mitochondrial respiration defects (31). In *S. cerevisiae*, the loss of PS or PE biosynthesis leads to the formation of petite mutants, which cannot utilize nonfermentable carbon sources such as glycerol due to mitochondrial defects (29, 31). In con-

trast, *C. albicans* is a nonpetite forming yeast, indicating that it cannot grow without functional mitochondria (15). In *C. neoformans*, mutants directly involved in mitochondrial function display disturbed mitochondrial action potential and increased levels of intracellular ROS (28). Functional mitochondria are required for the survival of *C. neoformans*, especially under low-oxygen conditions. Our results indicate that Cho1 plays an important role in maintaining the integrity of the mitochon-

Phosphatidylserine synthesis is essential in *Cryptococcus*

Table 1
Strains used in this study

		Genotype	Source/Ref.
<i>C. neoformans</i> strains			
H99		<i>MAT</i> α wildtype	43
AI187		<i>MAT</i> α / α diploid wildtype	24
CUX663		AI187 <i>cho1</i> Δ :: <i>NEO CHO1</i>	This study
CUX664		<i>MAT</i> α <i>P</i> _{ACT} - <i>CHO1</i> :mCherry-NAT	This study
CUX1081		<i>MAT</i> α <i>cho1</i> Δ :: <i>NEO P</i> _{CTR4} - <i>CHO1</i> -NAT	This study
CUX1082		<i>MAT</i> α <i>cki1</i> Δ ::NAT	UCSF 2015 deletion collection
<i>S. cerevisiae</i> strains			
BY4741		<i>MAT</i> α <i>his3</i> Δ 1 <i>leu2</i> Δ 0 <i>ura3</i> Δ 0	ATCC deletion collection
W303-1A		<i>MAT</i> α <i>ade2-1 can1-100 his3-11,15 leu2-3,112 trp1-1 ura3-1</i>	44
JSY94A		<i>MAT</i> α <i>ade2-1 can1-100 his3-11,15 leu2-3,112 trp1-1 ura3-1 cho1</i> Δ :: <i>TRP1</i>	41
YUX104		<i>MAT</i> α <i>ade2-1 can1-100 his3-11,15 leu2-3,112 trp1-1 ura3-1</i> [pTH19]	This study
YUX105		<i>MAT</i> α <i>ade2-1 can1-100 his3-11,15 leu2-3,112 trp1-1 ura3-1 cho1</i> Δ :: <i>TRP1</i> [pTH19]	This study
YUX106		<i>MAT</i> α <i>ade2-1 can1-100 his3-11,15 leu2-3,112 trp1-1 ura3-1 cho1</i> Δ :: <i>TRP1</i> [pTH19- <i>Cn CHO1</i>]	This study

drial membrane, which likely contributes to *C. neoformans* viability.

In summary, in this study, we demonstrated that the only homolog of PS synthase in *C. neoformans*, Cho1, has PS synthase activity and is essential for viability. Because humans use different mechanisms to produce PS as compared with fungi and there is no Cho1 in mammalian cells, the essentiality of the PS biosynthetic pathway represents this pathway and Cho1 as an excellent potential target for antifungal drug development.

Experimental procedures

Strains and media

C. neoformans and *S. cerevisiae* strains used in this study are listed in Table 1. Strains were grown at 30 °C using yeast peptone dextrose (YPD) or SC medium. The H99 strain containing the *CHO1* gene controlled by the *CTR4* promoter (*P*_{CTR4}-*CHO1*) was grown in SC medium supplemented with 25 μ M or 1 mM CuSO₄ and 1 mM ascorbic acid or in the presence of 200 μ M BCS.

Growth assay

The WT H99 and H99-expressing *P*_{CTR4}-*CHO1* strains were grown overnight in YPD medium at 30 °C. Cells were harvested by centrifugation at 350 \times g, washed twice with sterile water, and inoculated at $A_{600\text{ nm}} = 0.1$ in SC medium containing either 200 μ M BCS or CuSO₄ with 1 mM ascorbic acid in the presence or absence of 1 mM ethanolamine and 1 mM choline. The growth of each strain in various conditions was determined by measuring $A_{600\text{ nm}}$ every 3 h for 3 days. Growth assay was performed in triplicate and repeated at least twice.

Heterologous expression of *Cn Cho1* into *Sc cho1* Δ mutant

C. neoformans Cn CHO1 cDNA (CNAG_01469) was cloned into yeast expression vector pTH19 (*P*_{ADHI} URA3 2 μ) (35) and transformed in *S. cerevisiae cho1* mutant (*Sc cho1* Δ) background, in which the expression of the *Cn CHO1* gene was under the control of the *ADHI* promoter. Cultures of *S. cerevisiae* strains WT W303-A1, *Sc cho1* Δ -expressing empty vector, and *Sc cho1* Δ -expressing *Cn CHO1* gene (*Sc cho1* Δ + *Cn CHO1*) (Table 1) were prepared with serial dilutions on SC-Ura medium with and without 1 mM ethanolamine. The results were photographed after 48 h of incubation at 30 or 37 °C.

Generation of the *cho1* Δ mutant strain

Generation of a *CHO1* deletion mutant in haploid WT H99 and diploid strain AI187 backgrounds was attempted following the strategy illustrated in Fig. 5A. The *cho1* Δ mutant was generated by overlap PCR and biolistic transformation as described previously (36). The 5'- and 3'-flanking regions of the *CHO1* gene were amplified from H99 genomic DNA with primers CX862/CX863 and CX864/CX865, respectively (Table S1). The dominant selectable marker (NEO) was amplified with the M13 primers (M13F and M13R) from plasmid pJAF1 (37). Each target gene replacement cassette was generated by overlap PCR with primers CX862/CX865 (Table S1). Purified overlap PCR products were precipitated onto 10- μ l gold microcarrier beads (0.6 μ m; Bio-Rad), and biolistically transformed in H99 and AI187 as described previously (38). Stable transformants were selected on YPD medium containing G418 (200 mg/liter). To screen for mutants of the *CHO1* gene, diagnostic PCR was performed by analyzing the removal of *Cn CHO1* ORF with primers CX866/CX867 (Table S1). Positive transformants identified by the PCR screen were further confirmed with primers CX868/JH8994.

Generation of the *P*_{CTR4}-*CHO1*-expressing strain

The native *CHO1* promoter was replaced by the *CTR4*-inducible promoter following the strategy illustrated in Fig. 5B. The fragment containing *CHO1* ORF and the downstream terminal region was amplified from H99 genomic DNA with primers CX1269/CX1270 (Table S1). Amplified PCR product was cloned into the BamHI sites of the pCTR4-2 vector (kindly provided by Dr. Tamara Doering laboratory, Washington University in St. Louis (25)) using an In-Fusion HD cloning kit (Takara, CA). The *CHO1* upstream and selectable marker (NAT) fragments were amplified using primers CX1271/CX1272 and CX5/CX1273, respectively (Table S1). Overlap PCR product (*CHO1* upstream-NAT fragment) was cloned into NdeI sites of *CHO1* ORF pCTR4-2 vector by In-Fusion HD cloning. The constructed vector was biolistically transformed into WT H99. Positive transformants identified by PCR using CX1306/JH8994 and CX1307/CX1276 primers (Table S1) were further confirmed by Southern blotting and gene sequencing.

RNA isolation and cDNA synthesis

H99 and H99-expressing P_{CTR4} -*CHO1* strains were grown in 50 ml of YPD medium at 30 °C overnight. Cells were then centrifuged, washed twice with sterile water, and transferred into 50 ml of SC medium containing either 200 μ M BCS for inducing condition or 25 μ M or 1 mM CuSO_4 with 1 mM ascorbic acid for suppressing condition. Cell cultures were incubated at 30 °C for 20 h. RNAs were isolated using the TRIzol method followed by phenol/chloroform extraction. The genomic DNA was eliminated using rDNase and RNA purification kit (Takara, CA). The quality of RNA was confirmed by measuring the $A_{260/280}$ ratio on a spectrophotometer (Bio-Rad) and visualizing on an RNA gel. For cDNA synthesis, RNA samples were reverse-transcribed using SMARTScribe reverse transcriptase (Takara, CA).

To determine *CHO1* gene expression in H99 under various inositol concentrations, cells were grown in 50 ml of YPD medium at 30 °C overnight. Cells were then centrifuged, washed twice with sterile water, and transferred into 50 ml of SC supplemented with 0.1 or 1% inositol (w/v), respectively. Cells were collected at two time points, 4 h after incubation at 30 °C, and RNA was isolated as described above.

Real-time PCR

The real-time PCR was performed using 2 \times master mix SYBR Green on an Mx4000 quantitative PCR system (Stratagene, CA). The amplification conditions consist of 1 cycle at 95 °C for 10 min, 40 cycles at 95 °C for 30 s, 55 °C for 30 s, and 72 °C for 30 s, and 1 cycle at 95 °C for 1 min, 55 °C for 30 s, and 95 °C for 30 s. The results were normalized to *GAPDH* and analyzed using $2^{-\Delta\Delta C_t}$ method (39).

Protein extraction and Western blot analysis

A previously described method with minor modification was used to determine whether *CHO1* is an integral membrane protein (40). *C. neoformans* strain expressing *CHO1*:mCherry (Table 1) was grown in 50 ml of YPD to early mid-log phase before harvesting by centrifugation at 1500 \times g for 5 min at 4 °C. Cells were washed with cold water and centrifuged at 1500 \times g for 5 min. Cells were then resuspended in 20 ml of Tris-HCl/EDTA buffer (0.1 M Tris-HCl, pH 7.5, 0.5 M EDTA) with 1 mM DTT and incubated at 30 °C for 2 h. Cell pellets were washed with 1 M sorbitol and incubated in 1 M sorbitol with lyticase (1 μ g/ μ l) and chitinase (30 mg/ml) at 30 °C for 3 h. One gram of spheroplasts was resuspended in homogenizing buffer (150 mM NaCl, 20 mM Tris-HCl, pH 8) and lysed using a beads beater (8 times for 40 s each cycle). Cells were centrifuged at 13,000 \times g for 10 min at 4 °C. The insoluble pellet was resuspended in 8 ml of either buffer alone (150 mM NaCl, 20 mM Tris, pH 8.0, 5 mM MgCl₂, 1 mM phenylmethylsulfonyl fluoride), buffer with 1% Triton X-100, or buffer with 1 M NaCl. Extracts were incubated on ice for 30 min and then separated into a soluble and pellet fraction by ultracentrifugation at 226,000 \times g for 60 min at 4 °C. Equivalent amounts from the pellet and the supernatant were analyzed by Western blotting and SDS-PAGE. The antibodies were used at the following dilutions: RFP-tag antibody 1:1000 (GenScript) and anti-rabbit 1:1000 (GenScript).

Lipid extraction, separation, and identification

Lipid isolation followed a previously reported method with modifications (41, 42). *S. cerevisiae* WT strain BY4742, *C. neoformans* WT strain H99, and its mutant of the EKI/CKI kinase homolog (*Cn cki1Δ*) strains (Table 1) were grown in YPD overnight to $A_{600\text{ nm}} = 5$. Cells were centrifuged, washed twice in sterile water, and incubated at a starting $A_{600\text{ nm}} = 0.1$ in 2 ml of SC medium with 10 μ Ci of [¹⁴C]ethanolamine and 10 μ Ci of [¹⁴C]choline overnight at 30 °C. Labeled cells were harvested by centrifugation, washed twice with sterile water, and incubated in 1 ml of spheroplast buffer (1 M sorbitol, 0.05 M sodium phosphate monobasic, 0.1% 2-mercaptoethanol (v/v)) with 100 μ g/ml chitinase for 1 h at 30 °C. Cells were collected by centrifugation, washed with sterile water, and resuspended in chloroform/methanol (2:1). Glass beads were added, and cells were lysed using a beads beater (8 times for 40 s each cycle). Lysate was transferred into new 1.5-ml tubes and incubated on a shaker at room temperature for 30 min. To separate the organic phase containing phospholipids from the aqueous phase containing nonlipid cellular material, 0.2 volume of water was added. Mixture was vortexed and centrifuged at 1000 \times g for 1 min. Eighteen microliters of lipids were loaded onto HPTLC silica gel (Millipore, MA). Solvent used in the mobile phase consisted of chloroform/methanol/acetic acid (65:25:10). Lipids were visualized using 99.99% iodide and autoradiography film (Denville Scientific, NJ).

ER tracker staining

C. neoformans overnight cultures were washed twice in Hanks' balanced salt solution (HBSS) buffer (1.26 mM CaCl₂, 5.33 mM KCl, 0.44 mM KH₂PO₄, 0.5 mM MgCl₂·6H₂O, 0.44 mM MgSO₄·7H₂O, 138 mM NaCl, 4 mM NaHCO₃, 0.3 mM Na₂HPO₄, and 5.6 mM D-glucose) before being fixed with 3.7% formaldehyde for 5 min at 30 °C. Fixed cells were washed with HBSS buffer three times and stained with 1 μ M ER tracker (Life Technologies, Inc.) for 30 min at 30 °C before being observed under the fluorescence microscope (Nikon).

Mitochondria and DNA staining

C. neoformans overnight cultures were resuspended in SC medium containing either 200 μ M BCS or 1 mM CuSO_4 and 1 mM ascorbic acid. Cells were incubated at 30 °C for 6 h and then washed twice in 1 \times PBS and resuspended in 1 \times PBS with 0.2 μ M MitoTracker Red FM (Invitrogen) and 1 μ g of DAPI (ThermoFisher Scientific). Mixture was incubated for 10 min at 30 °C. Cells were then washed twice with 1 \times PBS and observed under a fluorescence microscope (Nikon).

ROS measurement

ROS detection technique followed a previously reported method (28). Cells were grown overnight in YPD medium at 30 °C. The following day, cells were diluted in SC medium and allowed to grow until $A_{600\text{ nm}}$ reached 0.5. H₂DCFDA (Invitrogen) at a final concentration of 10 μ M was added, and cells were incubated for an additional 2 h. Cells were then washed to remove the excess dye and resuspended in SC, SC with 200 μ M BCS, and SC with 1 mM CuSO_4 to further incubate for 2, 4, and

Phosphatidylserine synthesis is essential in *Cryptococcus*

6 h. Cells were then harvested, washed with 1× PBS, and resuspended in 1 ml of PBS. Fluorescence signal was analyzed using Accuri Flow Cytometer (BD Biosciences). Two-tail *t* test was used for statistical analysis, where * represents $p < 0.05$, and ** represents $p < 0.01$.

PS synthase activity assay

All assays were conducted at 30 °C in a total volume of 0.1 ml. PS synthase activity was measured following the incorporation of water-soluble [^3H]serine (10,000 cpm/nmol) into chloroform-soluble [^3H]PS (16, 22, 23). The enzyme reaction contained 50 mM Tris-HCl, pH 8.0, 0.6 mM MnCl_2 , 4 mM Triton X-100, 0.2 mM CDP-DAG, and 0.5 mM serine (41). The enzyme assays were conducted in triplicate, and the average S.D. of the assays was $\pm 5\%$. The reactions were linear with time and protein concentration. A unit of PS synthase activity was defined as the amount of enzyme that catalyzed the formation of 1 nmol of product/min.

Statistical analysis

Means with standard deviations were calculated using the *t* test for multiple comparisons. The *p* value of <0.05 was considered a significant difference.

Author contributions—P. K., Y. W., G.-S. H., K. J. G., and C. X. data curation; P. K., Y. W., G.-S. H., K. J. G., Y.-G. G., and C. X. formal analysis; P. K., Y. W., and C. X. validation; P. K., Y. W., G.-S. H., K. J. G., Y.-G. G., and C. X. investigation; P. K., Y. W., and C. X. visualization; P. K., Y. W., G.-S. H., K. J. G., and C. X. methodology; P. K. and C. X. writing-original draft; P. K., Y.-G. G., G. M. C., and C. X. project administration; P. K., G.-S. H., Y.-G. G., G. M. C., and C. X. writing-review and editing; K. J. G., Y.-G. G., and C. X. software; G. M. C. and C. X. conceptualization; G. M. C. and C. X. supervision; G. M. C. and C. X. funding acquisition.

Acknowledgments—We thank Erika Shor for critical reading and editing of the manuscript and valuable comments for the study. We thank Dr. Xilin Zhao for valuable comments and material support for the ROS experiments. We thank Dr. Todd Reynolds for valuable comments on the study. We thank Dr. Tamara Doering for the pCTR4-2 plasmid. We also acknowledge use of the *C. neoformans* genome sequences at FungiDB.

References

1. Park, B. J., Wannemuehler, K. A., Marston, B. J., Govender, N., Pappas, P. G., and Chiller, T. M. (2009) Estimation of the current global burden of cryptococcal meningitis among persons living with HIV/AIDS. *AIDS* **23**, 525–530 [CrossRef Medline](#)
2. Rajasingham, R., Smith, R. M., Park, B. J., Jarvis, J. N., Govender, N. P., Chiller, T. M., Denning, D. W., Loyse, A., and Boulware, D. R. (2017) Global burden of disease of HIV-associated cryptococcal meningitis: an updated analysis. *Lancet Infect. Dis.* **17**, 873–881 [CrossRef Medline](#)
3. Heitman, J., Kozel, T. R., Kwon-Chung, K. J., Perfect, J. R., and Casadevall, A. (2011) *Cryptococcus from Human Pathogen to Model Yeast*. American Society for Microbiology, Washington, D. C.
4. Saag, M. S., Graybill, R. J., Larsen, R. A., Pappas, P. G., Perfect, J. R., Powderly, W. G., Sobel, J. D., and Dismukes, W. E. (2000) Practice guidelines for the management of cryptococcal disease. *Clin. Infect. Dis.* **30**, 710–718 [CrossRef Medline](#)
5. Panatala, R., Hennrich, H., and Holthuis, J. C. (2015) Inner workings and biological impact of phospholipid flippases. *J. Cell Sci.* **128**, 2021–2032 [CrossRef Medline](#)
6. Leventis, P. A., and Grinstein, S. (2010) The distribution and function of phosphatidylserine in cellular membranes. *Annu. Rev. Biophys.* **39**, 407–427 [CrossRef Medline](#)
7. Kay, J. G., Koivusalo, M., Ma, X., Wohland, T., and Grinstein, S. (2012) Phosphatidylserine dynamics in cellular membranes. *Mol. Biol. Cell* **23**, 2198–2212 [CrossRef Medline](#)
8. Birge, R. B., Boeltz, S., Kumar, S., Carlson, J., Wanderley, J., Calianese, D., Barcinski, M., Brekken, R. A., Huang, X., Hutchins, J. T., Freimark, B., Empig, C., Mercer, J., Schroit, A. J., Schett, G., and Herrmann, M. (2016) Phosphatidylserine is a global immunosuppressive signal in efferoctocytosis, infectious disease, and cancer. *Cell Death Differ.* **23**, 962–978 [CrossRef Medline](#)
9. Newton, A. C., and Keranen, L. M. (1994) Phosphatidyl-L-serine is necessary for protein kinase C's high-affinity interaction with diacylglycerol-containing membranes. *Biochemistry* **33**, 6651–6658 [CrossRef Medline](#)
10. Wu, Y., Tibrewal, N., and Birge, R. B. (2006) Phosphatidylserine recognition by phagocytes: a view to a kill. *Trends Cell Biol.* **16**, 189–197 [CrossRef Medline](#)
11. Segawa, K., and Nagata, S. (2015) An apoptotic 'Eat Me' signal: phosphatidylserine exposure. *Trends Cell Biol.* **25**, 639–650 [CrossRef Medline](#)
12. Farine, L., Niemann, M., Schneider, A., and Bütikofer, P. (2015) Phosphatidylethanolamine and phosphatidylcholine biosynthesis by the Kennedy pathway occurs at different sites in *Trypanosoma brucei*. *Sci. Rep.* **5**, 16787 [CrossRef Medline](#)
13. Vance, J. E. (2015) Phospholipid synthesis and transport in mammalian cells. *Traffic* **16**, 1–18 [CrossRef Medline](#)
14. Letts, V. A., Klig, L. S., Bae-Lee, M., Carman, G. M., and Henry, S. A. (1983) Isolation of the yeast structural gene for the membrane-associated enzyme phosphatidylserine synthase. *Proc. Natl. Acad. Sci. U.S.A.* **80**, 7279–7283 [CrossRef Medline](#)
15. Chen, Y. L., Montedonico, A. E., Kauffman, S., Dunlap, J. R., Menn, F. M., and Reynolds, T. B. (2010) Phosphatidylserine synthase and phosphatidylserine decarboxylase are essential for cell wall integrity and virulence in *Candida albicans*. *Mol. Microbiol.* **75**, 1112–1132 [CrossRef Medline](#)
16. Bae-Lee, M. S., and Carman, G. M. (1984) Phosphatidylserine synthesis in *Saccharomyces cerevisiae*. Purification and characterization of membrane-associated phosphatidylserine synthase. *J. Biol. Chem.* **259**, 10857–10862 [Medline](#)
17. Carman, G. M., and Kersting, M. C. (2004) Phospholipid synthesis in yeast: regulation by phosphorylation. *Biochem. Cell Biol.* **82**, 62–70 [CrossRef Medline](#)
18. Kelley, M. J., Bailis, A. M., Henry, S. A., and Carman, G. M. (1988) Regulation of phospholipid biosynthesis in *Saccharomyces cerevisiae* by inositol. Inositol is an inhibitor of phosphatidylserine synthase activity. *J. Biol. Chem.* **263**, 18078–18085 [Medline](#)
19. Huang, W., Liao, G., Baker, G. M., Wang, Y., Lau, R., Paderu, P., Perlin, D. S., and Xue, C. (2016) Lipid flippase subunit Cdc50 mediates drug resistance and virulence in *Cryptococcus neoformans*. *MBio* **7**, e00478 [Medline](#)
20. Shor, E., Wang, Y., Perlin, D. S., and Xue, C. (2016) *Cryptococcus* flips its lipid-membrane phospholipid asymmetry modulates antifungal drug resistance and virulence. *Microb. Cell* **3**, 358–360 [CrossRef Medline](#)
21. Hu, G., Caza, M., Bakkeren, E., Kretschmer, M., Bairwa, G., Reiner, E., and Kronstad, J. (2017) A P4-ATPase subunit of the Cdc50 family plays a role in iron acquisition and virulence in *Cryptococcus neoformans*. *Cell Microbiol.* **19**, e12718 [CrossRef](#)
22. Carman, G. M., and Bae-Lee, M. (1992) Phosphatidylserine synthase from yeast. *Methods Enzymol.* **209**, 298–305 [CrossRef Medline](#)
23. Cousminer, J. J., and Carman, G. M. (1981) Solubilization of membrane-associated phosphatidylserine synthase from *Clostridium perfringens*. *Can. J. Microbiol.* **27**, 544–547 [CrossRef Medline](#)
24. Idnurm, A. (2010) A tetrad analysis of the basidiomycete fungus *Cryptococcus neoformans*. *Genetics* **185**, 153–163 [CrossRef Medline](#)
25. Ory, J. J., Griffith, C. L., and Doering, T. L. (2004) An efficiently regulated promoter system for *Cryptococcus neoformans* utilizing the CTR4 promoter. *Yeast* **21**, 919–926 [CrossRef Medline](#)
26. Liu, T. B., and Xue, C. (2014) Fbp1-mediated ubiquitin-proteasome pathway controls *Cryptococcus neoformans* virulence by regulating fungal in-

- tracellular growth in macrophages. *Infect. Immun.* **82**, 557–568 [CrossRef Medline](#)
27. Ding, C., Festa, R. A., Chen, Y. L., Espart, A., Palacios, Ò., Espín, J., Capdevila, M., Atrian, S., Heitman, J., and Thiele, D. J. (2013) *Cryptococcus neoformans* copper detoxification machinery is critical for fungal virulence. *Cell Host Microbe* **13**, 265–276 [CrossRef Medline](#)
 28. Ingavale, S. S., Chang, Y. C., Lee, H., McClelland, C. M., Leong, M. L., and Kwon-Chung, K. J. (2008) Importance of mitochondria in survival of *Cryptococcus neoformans* under low oxygen conditions and tolerance to cobalt chloride. *PLoS Pathog.* **4**, e1000155 [CrossRef Medline](#)
 29. Grant, C. M., MacIver, F. H., and Dawes, I. W. (1997) Mitochondrial function is required for resistance to oxidative stress in the yeast *Saccharomyces cerevisiae*. *FEBS Lett.* **410**, 219–222 [CrossRef Medline](#)
 30. Kohlwein, S. D., Kuchler, K., Sperka-Gottlieb, C., Henry, S. A., and Paltauf, F. (1988) Identification of mitochondrial and microsomal phosphatidylserine synthase in *Saccharomyces cerevisiae* as the gene product of the *CHO1* structural gene. *J. Bacteriol.* **170**, 3778–3781 [CrossRef Medline](#)
 31. Simbeni, R., Pon, L., Zinser, E., Paltauf, F., and Daum, G. (1991) Mitochondrial membrane contact sites of yeast. Characterization of lipid components and possible involvement in intramitochondrial translocation of phospholipids. *J. Biol. Chem.* **266**, 10047–10049 [Medline](#)
 32. Atkinson, K. D., Jensen, B., Kolat, A. I., Storm, E. M., Henry, S. A., and Fogel, S. (1980) Yeast mutants auxotrophic for choline or ethanolamine. *J. Bacteriol.* **141**, 558–564 [Medline](#)
 33. Cassilly, C. D., and Reynolds, T. B. (2018) PS, it's complicated: the roles of phosphatidylserine and phosphatidylethanolamine in the pathogenesis of *Candida albicans* and other microbial pathogens. *J. Fungi* **4**, E28 [CrossRef Medline](#)
 34. Davis, S. E., Tams, R. N., Solis, N., Wagner, A. S., Chen, T., Jackson, J. W., Hasim, S., Montedonico, A. E., Dinsmore, J., Sparer, T. E., Filler, S. G., and Reynolds, T. B. (2018) *Candida albicans* cannot acquire sufficient ethanolamine from the host to support virulence in the absence of *de novo* phosphatidylethanolamine synthesis. *Infect. Immun.* **86**, IAI.00815-17 [CrossRef Medline](#)
 35. Harashima, T., and Heitman, J. (2002) The G α protein Gpa2 controls yeast differentiation by interacting with kelch repeat proteins that mimic G β subunits. *Mol. Cell* **10**, 163–173 [CrossRef Medline](#)
 36. Davidson, R. C., Blankenship, J. R., Kraus, P. R., de Jesus Berrios, M., Hull, C. M., D'Souza, C., Wang, P., and Heitman, J. (2002) A PCR-based strategy to generate integrative targeting alleles with large regions of homology. *Microbiology* **148**, 2607–2615 [CrossRef Medline](#)
 37. Fraser, J. A., Subaran, R. L., Nichols, C. B., and Heitman, J. (2003) Recapitulation of the sexual cycle of the primary fungal pathogen *Cryptococcus neoformans* var. *gattii*: implications for an outbreak on Vancouver Island, Canada. *Eukaryot. Cell* **2**, 1036–1045 [CrossRef Medline](#)
 38. Davidson, R. C., Cruz, M. C., Sia, R. A., Allen, B., Alspaugh, J. A., and Heitman, J. (2000) Gene disruption by biolistic transformation in serotype D strains of *Cryptococcus neoformans*. *Fungal Genet. Biol.* **29**, 38–48 [CrossRef Medline](#)
 39. Xue, C., Liu, T., Chen, L., Li, W., Liu, I., Kronstad, J. W., Seyfang, A., and Heitman, J. (2010) Role of an expanded inositol transporter repertoire in *Cryptococcus neoformans* sexual reproduction and virulence. *MBio* **1**, e00084 [Medline](#)
 40. Siniossoglou, S., Santos-Rosa, H., Rappsilber, J., Mann, M., and Hurt, E. (1998) A novel complex of membrane proteins required for formation of a spherical nucleus. *EMBO J.* **17**, 6449–6464 [CrossRef Medline](#)
 41. Choi, H. S., Han, G. S., and Carman, G. M. (2010) Phosphorylation of yeast phosphatidylserine synthase by protein kinase A: identification of Ser46 and Ser47 as major sites of phosphorylation. *J. Biol. Chem.* **285**, 11526–11536 [CrossRef Medline](#)
 42. Atkinson, K., Fogel, S., and Henry, S. A. (1980) Yeast mutant defective in phosphatidylserine synthesis. *J. Biol. Chem.* **255**, 6653–6661 [Medline](#)
 43. Perfect, J. R., Schell, W. A., and Rinaldi, M. G. (1993) Uncommon invasive fungal pathogens in the acquired immunodeficiency syndrome. *J. Med. Vet. Mycol.* **31**, 175–179 [CrossRef Medline](#)
 44. Wallis, J. W., Chrebet, G., Brodsky, G., Rolfe, M., and Rothstein, R. (1989) A hyper-recombination mutation in *S. cerevisiae* identifies a novel eukaryotic topoisomerase. *Cell* **58**, 409–419 [CrossRef Medline](#)