

SCIENTIFIC REPORTS



OPEN

In vivo characterisation of fluorescent proteins in budding yeast

Dennis Botman¹, Daan Hugo de Groot¹, Phillipp Schmidt¹, Joachim Goedhart² & Bas Teusink¹

Fluorescent proteins (FPs) are widely used in many organisms, but are commonly characterised *in vitro*. However, the *in vitro* properties may poorly reflect *in vivo* performance. Therefore, we characterised 27 FPs *in vivo* using *Saccharomyces cerevisiae* as model organism. We linked the FPs via a T2A peptide to a control FP, producing equimolar expression of the 2 FPs from 1 plasmid. Using this strategy, we characterised the FPs for brightness, photostability, photochromicity and pH-sensitivity, achieving a comprehensive *in vivo* characterisation. Many FPs showed different *in vivo* properties compared to existing *in vitro* data. Additionally, various FPs were photochromic, which affects readouts due to complex bleaching kinetics. Finally, we codon optimized the best performing FPs for optimal expression in yeast, and found that codon-optimization alters FP characteristics. These FPs improve experimental signal readout, opening new experimental possibilities. Our results may guide future studies in yeast that employ fluorescent proteins.

Fluorescent proteins (FPs) have become a widely used tool for many organisms as they enable visualization and measurements of cellular processes in a spatiotemporal and non-invasive manner. Since the discovery of GFP by Prasher and colleagues¹, new FPs have been developed, each with their own traits^{2–16}. Not a single FP is optimal for all possible experiments, since every FP has its strong and weak characteristics. Based on the specific characteristics needed for an experiment, one should choose the most suitable FP.

The two most important factors for live cell imaging are brightness and photostability as these determine the fluorescent signal and the ability to maintain it over time. The *in vitro* brightness is often defined as the multiplication of the quantum yield (the amount of photons emitted per absorbed photons) and the extinction coefficient (the amount of absorbed photons at a specific wavelength). In contrast, the *in vivo* (or practical) brightness also depends on the level of functional FPs, determined by protein folding, maturation and degradation. Moreover, other factors such as the cellular environment and post-translational modifications can affect the practical brightness. Therefore, the *in vitro* brightness is often not directly proportional to the more relevant *in vivo* brightness^{17–19}.

The loss of fluorescence intensity due to illumination of a fluorophore is known as photobleaching. Upon excitation, electrons can transition from the excited singlet state to the excited triplet state and subsequently interact with other molecules, and this can irreversibly modify and damage the chromophore^{20,21}. The amount of excitation and emission cycles an FP can undergo before it bleaches depends on the specific FP and the illumination settings². A photostable FP with simple bleaching kinetics (i.e. mono exponential decay) is obviously desirable.

Yet, bleaching kinetics can be complex due to reversible bleaching processes called photochromism. This under-appreciated process is bleaching-related and is caused by a reversible dark state of the FP chromophore^{5,19,22–24}. Photochromism results in reversible bleaching when using multiple excitation wavelengths. Reversible bleaching is caused by the transition of FPs from the reversible dark state back to the fluorescent state, which subsequently increases fluorescent signal in time. The mechanisms underlying photochromism are probably a *cis-trans* conversion of the chromophore tyrosyl side chain combined with a protonation of the chromophore^{25–28}. Although photochromism can greatly affect readouts in multicolour timelapse experiments, it has

¹Systems Bioinformatics/AIMMS, Vrije Universiteit Amsterdam, De Boelelaan 1085, 1081 HV, Amsterdam, The Netherlands. ²Section of Molecular Cytology, van Leeuwenhoek Centre for Advanced Microscopy, Swammerdam Institute for Life Sciences, University of Amsterdam, Science Park 904, 1098 XH, Amsterdam, The Netherlands. Correspondence and requests for materials should be addressed to B.T. (email: b.teusink@vu.nl)

Received: 15 October 2018

Accepted: 14 December 2018

Published online: 19 February 2019

hardly been systematically characterised, and the effect of each different excitation wavelength on photochromism is poorly documented.

Fourth, FPs have a natural tendency to form dimers or oligomers, which affects localisation and the functionality of tagged proteins^{29,30}. Optimization of *Aequorea victoria* derived FPs has led to monomeric variants in which the hydrophobic amino acids at the dimer interface (i.e. Ala²⁰⁶, Leu²²¹ and Phe²²³) have been replaced with positive charged amino acids (i.e. A206K, L221K, or F223R)³¹. These mutations are specific for FPs derived from *Aequorea victoria*, and similar mutations in other FPs may not work. The generation of monomeric FPs from obligate tetramers requires substantial engineering, which usually is accompanied by a loss in brightness^{15,30,32}. Oligomerisation tendency has been extensively characterised *in vivo* in mammalian cells but it is not known whether these results hold in other species².

Fifth, pH quenching of fluorescence occurs by the protonation and deprotonation of the chromophore side chains of FPs³³. FPs with low pH sensitivity are necessary under conditions of dynamic pH changes, which is very common in yeast³⁴. The pH quenching curves can be described by a Hill fit that gives a pKa value and a Hill coefficient. The pH robustness can easily be misinterpreted by only looking at pKa values. However, FPs with a low pKa and a low Hill coefficient do not show a pH range in which the fluorescence remains constant and are still pH-sensitive. On the other hand, FPs with a low pKa and a high Hill coefficient are pH-insensitive as these FPs have a plateau at pH values above the pKa. Thus, pH-insensitive FPs are better identified based on these two parameters combined. In addition, pH sensitivity has always been described *in vitro*, neglecting the effect of cytosolic components on the pH quenching. How representative *in vitro* pH sensitivity is for the *in vivo* performance is unknown.

Finally, after translation, an FP should fold and undergo various autocatalytic steps before becoming fluorescent, a process called maturation^{35–38}. Although FPs do not need a cofactor for maturation, they do need oxygen, an important sidenote for studies in anaerobic conditions. Maturation times are important for timelapse experiments, FP brightness and reliable maturation reduces day-to-day variation.

Clearly, all aforementioned properties of FPs can influence experimental success and reliability of the results. Until now, people still choose FPs for use in yeast or other organisms based on characteristics derived from bacterial, mammalian or *in vitro* data. These data may not represent the *in vivo* behaviour of FPs^{17–19}. We therefore aimed to characterise the mentioned characteristics systematically *in vivo*, using *Saccharomyces cerevisiae* as model organism. This is a yeast species that grows optimally at 30 °C. By using a variety of assays, we measured FP properties *in vivo*. We found many critical differences between our characterisation *in vivo* in yeast compared to characterisations done in mammalian cell systems or *in vitro*. Furthermore, we codon-optimized the best performing FPs in each spectral class which generated yeast FPs (yFPs). The yFPs outperform the conventional FPs and are recommended for future experiments in yeast.

Material and Methods

Creation of constructs. Creation of constructs is described in the supplementary methods.

Yeast transformation. W303-1A WT (MATa, leu2-3/112, ura3-1, trp1-1, his3-11/15, ade2-1, can1-100) yeast cells were transformed according to Gietz and Schiestl³⁹.

Characterisation of brightness, day-to-day variation and expression. W303-1A yeast cells expressing the FP-T2A-FP constructs were grown overnight at 200 rpm and 30 °C in YNB medium (Sigma Aldrich, St. Louis, MO, USA), containing 100 mM glucose (Boom BV, Meppel, Netherlands), 20 mg/L adenine hemisulfate (Sigma-Aldrich), 20 mg/L L-tryptophan (Sigma-Aldrich), 20 mg/L L-histidine (Sigma Aldrich) and 60 mg/L L-leucine (SERVA Electrophoresis GmbH, Heidelberg, Germany). Next, cells were diluted and grown again overnight to mid-log (OD₆₀₀ 0.5–2). Subsequently, samples were put on a glass slide and visualized using a Nikon Ti-eclipse widefield fluorescence microscope (Nikon, Minato, Tokyo, Japan) equipped with an Andor Zyla 5.5 sCMOS Camera (Andor, Belfast, Northern Ireland) and a SOLA 6-LCR-SB power source (Lumencor, Beaverton, OR, USA).

CFPs were visualized with a 438/24 nm excitation filter, a 483/32 nm emission filter and a 458 nm long-pass (LP) dichroic mirror. GFPs were visualized using a 480/40 nm excitation filter, 535/50 nm emission filter and a 505 nm LP dichroic mirror. YFPs were visualized with a 500/24 nm excitation filter, a 542/27 nm emission filter and a 520 nm LP dichroic mirror. RFPs were visualized with a 560/20 nm filter, a 610 nm LP emission filter and a 600 nm LP dichroic mirror (all filters from Semrock, Lake Forest, IL, USA). Images were taken using a 60x plan Apo objective (numerical aperture 0.95), 10–30% light power, 2 × 2 binning and 20–200 msec exposure time at 30 °C, dependent on the FP expression. Per FP, fluorescence of 3 biological replicates was recorded. Images were analyzed with Fiji (NIH, Bethesda, MD, USA) and an in-house macro which performs background correction, identifies cells using the Weka segmentation plugin⁴⁰ and measures the mean brightness of every cell per channel. Data was analysed and visualised using R (R Foundation for Statistical Computing, Vienna, Austria).

Bleaching kinetics. Cells expressing the FP-T2A-FP constructs were grown and prepared as described for brightness characterisation. The same microscope and filter setups were used as described for brightness characterisation. Bleaching was performed by visualizing the cells every 500 msec, using a 60x plan Apo objective (numerical aperture 0.95), 10% light power, 2 × 2 binning and 200 msec exposure time at 30 °C for 181 frames. Per FP, at least 2 independent bleaching curves were obtained. Afterwards, images were segmented as previously described and the photostability was calculated by dividing the fluorescence of the last time point (frame 181) by the fluorescence of the first time point. Besides, half times were determined by fitting the bleaching curves with a one-phase (Eq. 1) or two-phase exponential (Eq. 2) decay formula⁴¹, with an b being offsets components for the first and second bleaching component, respectively. X is the time in milliseconds and r and s are the decay rates for each component. Per fit, Bayesian information criterion (BIC) values were obtained for both fits to determine whether the decay curves were mono- or biexponential.

$$\text{Normalized fluorescence} = (1 - a) + a \cdot e^{-X \cdot r} \quad (1)$$

$$\text{Normalized fluorescence} = (1 - a - b) + a \cdot e^{-X \cdot r} + b \cdot e^{-X \cdot s} \quad (2)$$

For photochromicity characterisation, cells expressing the FP-T2A-FP were bleached by alternating excitation with the correct wavelength for the FP of interest and a second wavelength (filter setups described in characterisation of brightness), starting with the wavelength for the FP of interest. Bleaching was performed by exposing the cells every 3 sec for both excitation wavelengths, using a 60x plan Apo objective (numerical aperture 0.95), 10% light power, using 2×2 binning and 200 msec exposure time at 30 °C. Cells were segmented as previously described and bleaching curves were normalized to the first frame. Model fitting and analysis of photochromism are explained in the supplementary information. Photochromic FPs were selected when an FP had a photochromism value above 50 (photochromism values for each excitation wavelength are shown in Table S2).

pH curves (*in vivo*). W303-1A yeast cells expressing the FP-T2A-FP constructs were grown overnight at 200 rpm and 30 °C in YNB medium containing 100 mM glucose, 20 mg/L adenine hemisulfate, 20 mg/L L-tryptophan, 20 mg/L L-histidine and 60 mg/L L-leucine. Also, W303-1A WT cells were grown overnight at 200 rpm and 30 °C in the same medium with 20 mg/L uracil (Honeywell Fluka, Morris Plains, NJ, United States) added. Next, cells were diluted and grown again overnight to an OD_{600} of 1.5–3. Cells were washed twice with sterile water and concentrated to an OD_{600} of 15. Next, cells were diluted 10 times in a 96 wells plate, containing a citrate phosphate buffer (0.1 M citric acid (Sigma Aldrich), 0.2 M- Na_2HPO_4 (Sigma Aldrich)) set to pH values ranging from 3–8 with 2 mM of the ionophore 2,4-Dinitrophenol (DNP, Sigma Aldrich). Per FP, 3 replicates were used. Cells were incubated for 2 hours to ensure pH equilibration. Next, the fluorescence intensity was measured using a FLUOstar Omega plate reader (BMG labtech, Ortenberg, Germany) using 25 flashes per well at 30 °C. Fluorescence of CFPs were obtained by using a 430/10 nm excitation filter and 480/10 nm emission filter, GFPs and YFPs were detected using a 485/12 nm filter and a 520/10 nm emission filter and RFPs were detected using a 544/10 nm excitation filter and a 590 nm long-pass emission filter (all filters from BMG labtech). Cells were corrected for auto fluorescence and normalized to the pH value giving the highest fluorescence. Per FP, a Hill fit (Eq. 3)¹⁹ was performed to obtain the pKa, the Hill coefficient (steepness of the curve), the offset (the plateau a curve can approach at low pH levels), and the pH value giving an absolute 50% decrease in fluorescence.

$$\text{Fluorescence} = \frac{\text{offset} + (1 - \text{offset})}{1 + 10^{(\text{pKa} - \text{pH}) * \text{Hillcoefficient}}} \quad (3)$$

pH curves (*in vitro*). 50 mL of *E. coli* bacteria expressing mTq2 were grown in LB medium overnight at 200 rpm and 37 °C. Next, cells were incubated for 6 hours at 21 °C for FP maturation. Cells were harvested by centrifuging at 3220 g for 30 minutes in a swing-out centrifuge using 50 mL tubes. Subsequently, cells were resuspended in 20 mL ST buffer (20 mM Tris, 200 mM NaCl, pH = 8) centrifuged again and resuspended in 2 mL ST buffer. The sample was put on ice, lysozyme (1 mg/ml, Sigma-Aldrich) and benzoase nuclease (5 unit/ml, Merck-Millipore) were added and the mixture was incubated for at least 30 minutes on ice. Bacteria were sonicated for 5 mins at 40 W and the lysate was centrifuged for 30 mins at 40,000 g and 4 °C. Next, the supernatant was transferred to Ni_2^+ -loaded His-Bind resin (Novagen (Merck)) and incubated for at least 1 h at 4 °C. The resin was washed three times with 14 mL ST buffer and the FP was obtained by adding 0.5 mL ST buffer containing 0.6 M imidazole. Lastly, the FP solution was dialyzed overnight in 10 mM Tris-HCl pH 8.0 using 3.5 kD membrane tubing (Spectrum Laboratories (Repligen), Waltham, MA, USA). Proteins were snap-frozen and stored at –80 °C.

For pH curves, purified mTq2 protein was thawed on ice. The protein was diluted 10 times in a black μ -clear 96 wells plate (Greiner Bio-One International GmbH, Kremsmünster, Austria) in 100 mM citric acid–sodium citrate buffer (pH 3.0–5.0) or 100 mM phosphate buffer (pH 6.0–8.0) buffer to a final volume of 200 μ L. Fluorescence was measured by exciting mTq2 at 430/20 nm and measuring fluorescence at 484/40 nm using a BIO-TEK FL600 Fluorescence plate reader (Biotek, Winooski, VT, USA) at room temperature. Analyses was performed as described for *in vivo* pH characterisation.

yFP spectra. W303-1A cells expressing the yFPs were grown for at least 2 weeks on 2% agarose plates containing 6.8 gr/L YNB, 100 mM glucose, 20 mg/L adenine hemisulfate, 20 mg/L L-tryptophan, 20 mg/L L-histidine and 60 mg/L L-leucine. An additional set of W303-1A cells with the empty pDRF1-GW vector was grown on the same plates. Next, cells were resuspended in selective growth medium (6.8 gr/L YNB, 100 mM glucose, 20 mg/L adenine hemisulfate, 20 mg/L L-tryptophan, 20 mg/L L-histidine and 60 mg/L L-leucine) to an OD_{600} of 3. Subsequently, cells were transferred to a black 96 wells plate (Greiner Bio-One) using 150 μ L per well. Per FP, 5 replicates were used. Emission and excitation spectra were recorded using a 1 nm stepsize. For emission spectra, an excitation bandwidth of 16 nm and an emission bandwidth of 10 nm was chosen. For excitation spectra, an excitation bandwidth of 10 nm and an emission bandwidth of 16 nm was chosen. For ymTq2, excitation spectra were recorded from 320 to 530 nm at 565 nm emission, emission was recorded from 428 to 740 nm with excitation set at 398 nm. For ymNeogreen, excitation spectra were recorded from 320 to 540 nm at 570 nm emission, emission was recorded from 480 to 740 nm with excitation set at 450 nm. For ymVenus and ymYPET, excitation spectra were recorded from 320 to 570 with 605 nm emission, emission was recorded from 495 to 740 nm with excitation set at 464 nm. For ytdTomato, excitation spectra were recorded from 320 to 626 nm with 662 nm emission, emission was recorded from 530 to 740 nm with excitation set at 500 nm. For ymScarletI, excitation spectra

were recorded from 320 to 635 nm with 670 nm emission, emission was recorded from 530 to 740 nm with excitation set at 500 nm. Spectra were corrected for autofluorescence and were normalized to their highest values.

Fluorescence lifetimes. Cells were grown on 2% agarose plates as described for the yFP spectra. Frequency domain FLIM was essentially performed as described before⁴². Briefly, 18 phase images were acquired using a RF-modulated image intensifier (Lambert Instruments II18MD, Groningen, The Netherlands) set at a frequency of 75.1 MHz coupled to a CCD camera (Photometrics HQ, Tucson, AZ, USA) as detector. For cyan FPs, a directly modulated 442 nm laser diode (PicoQuant, Berlin, Germany) was used and for green and yellow FPs a 488 nm argon laser was passed through a RF-modulated AOM (set at 75.1 MHz) for intensity modulation. Emission was passed through a BP480/40 nm filter for cyan FPs and a BP545/30 nm filter for green/yellow FPs. The lifetimes were calculated based on the phase shift of the emitted light ($\tau\phi$).

Oligomerisation tendency. Cells expressing CytERM-dtomato, CytERM-yeVenus, CytERM-ymTq2, CytERM-ymNeongreen, CytERM-ymYPET, CytERM-ymVenus, CytERM-ytdTomato and CytERM-ymScarletI were grown as described for brightness analysis. Next, cells were incubated for at least 1 hour at room temperature, put on a glass slide and visualized using the same setup as described for brightness characterisation. Z-stacks of multiple positions were taken using a Plan Apo λ 100x Oil Ph3 objective (numerical aperture 1.45), 20% light power, 2×2 binning and 100 msec exposure time at 30 °C. Per FP, 2 biological replicates were recorded. Images were analyzed with Fiji (NIH, Bethesda, MD, USA) and an in-house macro that performs background correction, makes a Z-projection, identifies cells and OSER structures using the Weka segmentation plugin and measures the amount of identified OSER structures per cell. Data was analysed and visualised using R.

FBPase flow cytometry. According to Gardner and Jaspersen⁴³, a PCR on pFA6a-link-ymNeongreen-SpHis5, pFA6a-link-yoEGFP-CaURA3 and pFA6a-link-yoSuperfolderGFP-CaURA3 was performed using KOD Hotstart polymerase with the FW primer CAAATCTTCTATTTGGTTGGGTTCTTCAGGTGAAATTGACAAATTTT-TAGACCATATTTGGCAAGTCACAGGGTGACGGTGCTGGTTTA and the RV primer ATACAGATTTTTTTTTTTCGCGTACTAAAGTACAGAACAAAGAAAATAAGAAAAGAAGGCGATCATTGAATCGATGAATTCGAGCTCG. Next, the products were transformed in CEN.PK2-1C WT (MATa; ura3-52; his3- Δ 1; leu2-3,112; trp1-289; MAL2-8c SUC2, obtained from Euroscarf), generating CEN.PK2-1C + FBP1-yoeGFP (MATa; ura3-52; his3- Δ 1; leu2-3,112; trp1-289; MAL2-8c SUC2 FBP1-yoeGFP (URA)), CEN.PK2-1C + FBP1-yosfGFP (MATa; ura3-52; his3- Δ 1; leu2-3,112; trp1-289; MAL2-8c SUC2; FBP1-yosfGFP (URA)) and CEN.PK2-1C + FBP1-ymNeongreen (MATa; ura3-52; his3- Δ 1; leu2-3,112; trp1-289; MAL2-8c SUC2; FBP1-ymNeongreen (HIS)). CEN.PK2-1C + FBP1-yoeGFP and CEN.PK2-1C + FBP1-yosfGFP were grown overnight at 30 °C and 200 rpm in 1x YNB medium containing 20 mg/L L-histidine, 60 mg/L L-leucine, 20 mg/L L-tryptophan and 50 mM phthalate buffer at pH 5 (adjusted with KOH) and 100 mM glucose. CEN.PK2-1C + FBP1-ymNeongreen was grown overnight at 30 °C and 200 rpm in 1x YNB medium containing 20 mg/L L-uracil, 60 mg/L L-leucine, 20 mg/L L-tryptophan and 50 mM phthalate buffer at pH 5 (adjusted with KOH) and 100 mM glucose. CEN.PK2-1C WT was grown overnight at 30 °C and 200 rpm in 1x YNB medium containing 20 mg/L L-histidine, 20 mg/L L-uracil, 60 mg/L L-leucine, 20 mg/L L-tryptophan and 50 mM phthalate buffer at pH 5 (adjusted with KOH) and 100 mM glucose. Next, cells were diluted in medium containing 2 mM glucose and 100 mM ethanol or medium containing 100 mM glucose and grown again overnight to an OD₆₀₀ of 1. Next, GFP was measured using a BD Accuri C6 Flow Cytometer (Becton, Dickinson and Company, Franklin Lakes, NJ, USA). Per sample, 50 μ L was run on medium flowrate with a maximum of 10.000 events per second. The threshold was set on a forward scatter height (FSC-H) of 80.000 and fluorescence was recorded using 488 nm excitation and an emission filter of 533/30 nm. Data was analysed and visualised using R.

Results

In vivo brightness and photostability. The most important criterium for choosing an FP is its brightness, as this largely determines the fluorescent signal that can be obtained. To obtain the practical brightness, we linked 27 of the mostly used FPs to either mTurquoise2 (mTq2) or mCherry with a viral T2A peptide, as was previously done for mammalian cells⁴⁴. We did not include the yeast-optimized GFP Envy as it is known to be dimeric^{45,46}. The linkage through the T2A peptide ensures the equimolar expression of the two FPs⁴⁷ required for quantitative comparisons. Normalizing the FP of interest to the expression levels of mTq2 or mCherry (the control FPs) gives the practical brightness of an FP in yeast (Figs 1 and 2, Table S2).

As can be inferred from Fig. 2A,C, the differences in practical brightness between spectrally similar fluorescent proteins were substantial. A relatively low brightness was observed for mTFP, Clover, tagRFP, mScarlet, mRuby2, Citrine and mVenus. In contrast, eCFP, mTq2, mNeonGreen, YPET, mScarletI and mKate2 showed a relatively high practical brightness. In addition, tdTomato also showed high brightness. However, tdTomato is known to mature badly in mammalian cells in which it shows a large fraction of un mature green fluorescent proteins^{15,48}. Yet, this did not occur in yeast and tdTomato is therefore a useful red FP in yeast. The altered brightness of yoeCFP and yotagRFP-T compared to their non-codon optimized variants might be due to these constructs not being completely identical. We also measured day-to-day variation, depicted by the coefficient of variation (CV) of the mean of each day. We found various YFPs and RFPs to have a large day-to-day variation (Fig. 2D). These FPs will give broader distributions or different readouts when used at different days due to intrinsic brightness variations between days.

Next to brightness, the photostability of FPs is often considered when choosing an FP as this determines how long an FP can be visualized. To assess photostability, we imaged cells expressing the FPs using low amounts of widefield exposure as this resembles real experiments best. All fluorescence was normalized to the first frame and the photostability was determined as the fluorescence fraction still present at the last frame of the bleaching

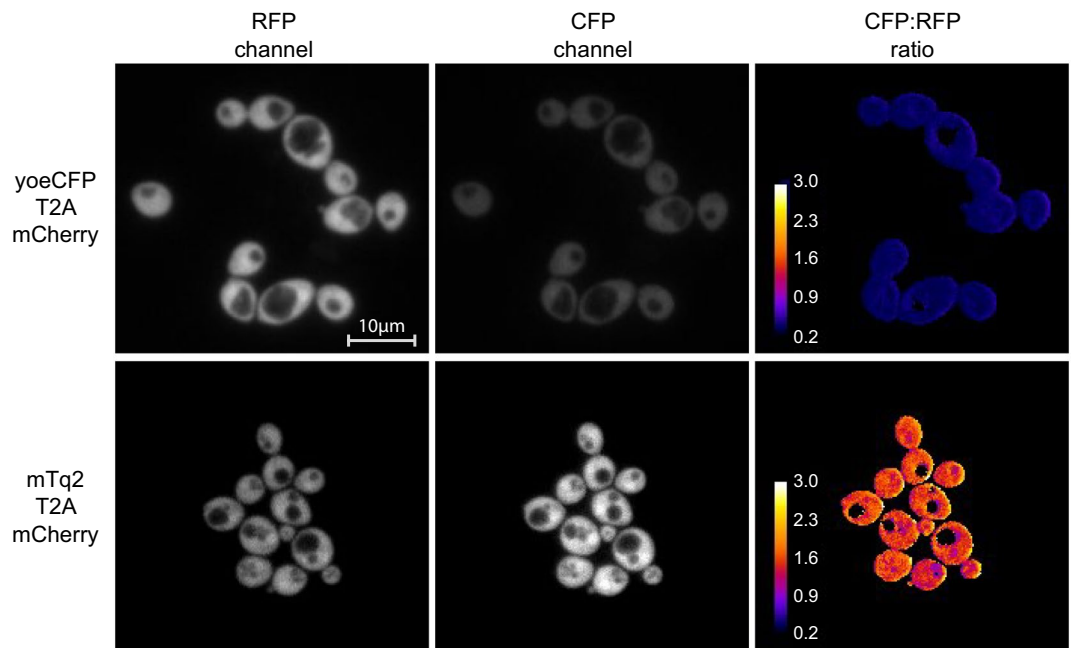


Figure 1. Example of practical brightness quantification using the T2A peptide linker. Cells expressing either yoeCFP-T2A-mCherry or mTq2-T2A-mCherry were grown to midlog and visualized using a widefield microscope. yoeCFP shows a low brightness compared to mCherry. In contrast, mTq2 shows a higher brightness than mCherry. Calibration bar indicates the ratio value when dividing the CFP by the RFP channel (i.e. the relative brightness to mCherry).

experiment (Fig. 2B,C). Various FPs in the red and yellow spectrum showed a low photostability whereas most of the CFPs and GFPs showed a high photostability. We found that the relative photostability (i.e. compared to other FPs) of mVenus and yosfGFP was lower than previously determined². In contrast, YPET, Citrine, mKate2 and tdTomato were relatively more photostable than reported *in vitro*. The most photostable FPs are mTFP, mNeongreen, tdTomato, mCherry and yotagRFPT. YPET and Citrine were the most photostable yellow FPs (besides mNeongreen) but still showed considerable bleaching. Combining FP brightness with photostability resulted in YPET, mNeongreen, mTq2, tdTomato and mScarletI as the best performing FPs.

Photochromism. Although photobleaching experiments give information about FP photostability, these single-wavelength bleaching kinetics give an incomplete picture of FP behaviour in time. Nowadays, FPs are often used simultaneously so that FPs are excited at various wavelengths. Exposing an FP to multiple wavelengths can induce or accelerate both reversible and irreversible photobleaching^{5,19,22–24}. Moreover, another photophysical phenomenon of FPs is photoswitching or photoconversion into a spectrally different species⁴⁹. The term that we will use for any of these effects is photochromism. We identified photochromic FPs and focussed on the effect of different excitation wavelengths on photochromism.

We assessed photochromic behaviour of all FPs in our library (Figs 3 and S3). We did this by fitting bleaching curves of single-wavelength and dual-wavelength bleaching data to a mathematical model. This model includes 3 FP states: a natural (nat), a reversible dark (dark), and an irreversible dark state (irrdark) (Fig. 3A). In the natural state, the FPs are fluorescent. FPs can transition from the natural state to the dark state, both by light exposure and spontaneously. In the dark state, the FPs are not fluorescent, but can return to the natural state both spontaneously and by excitation light. For the different wavelengths that can be combined for an FP, we fitted different rate constants for these transitions, as well as for the spontaneous transitions. Lastly, FPs can also transition from the dark state to an irreversible dark state in which the FP stays non-fluorescent. Using this small model, we were able to fit all obtained bleaching kinetics for each FP (Figs 3C and S3). The model can therefore be used to correct for complex bleaching kinetics occurring with photochromic FPs.

With the model we were also able to show that tagRFP and mRuby2 are photochromic, which is in agreement with other studies (Fig. 3B)^{5,19,24}. We also identified mKok and mKo2 as photochromic, in agreement with an earlier observation that blue light triggers photoconversion of these FPs^{42,50}. Lastly, we observed photochromism of sGFP2. Interestingly, photochromic behaviour of most FPs only occurs when using wavelengths shorter than the optimum wavelength for the FP. This suggests that the transition from the reversible dark state to the natural state requires more energy than the energy required to excite the fluorescent protein. To test the effect of each specific excitation wavelength on photochromism, we systematically determined the photochromic sensitivity of an FP for any of the other wavelengths (i.e. CFP, GFP, YFP or RFP excitation wavelengths) that can be combined with that FP (for example, YFP photochromism is not determined in combination with a GFP excitation wavelength as a YFP and GFP cannot be combined for dual colour experiments). Our data indicates that the specific second wavelength used does not largely affect photochromism effects. The only requirement is a wavelength smaller

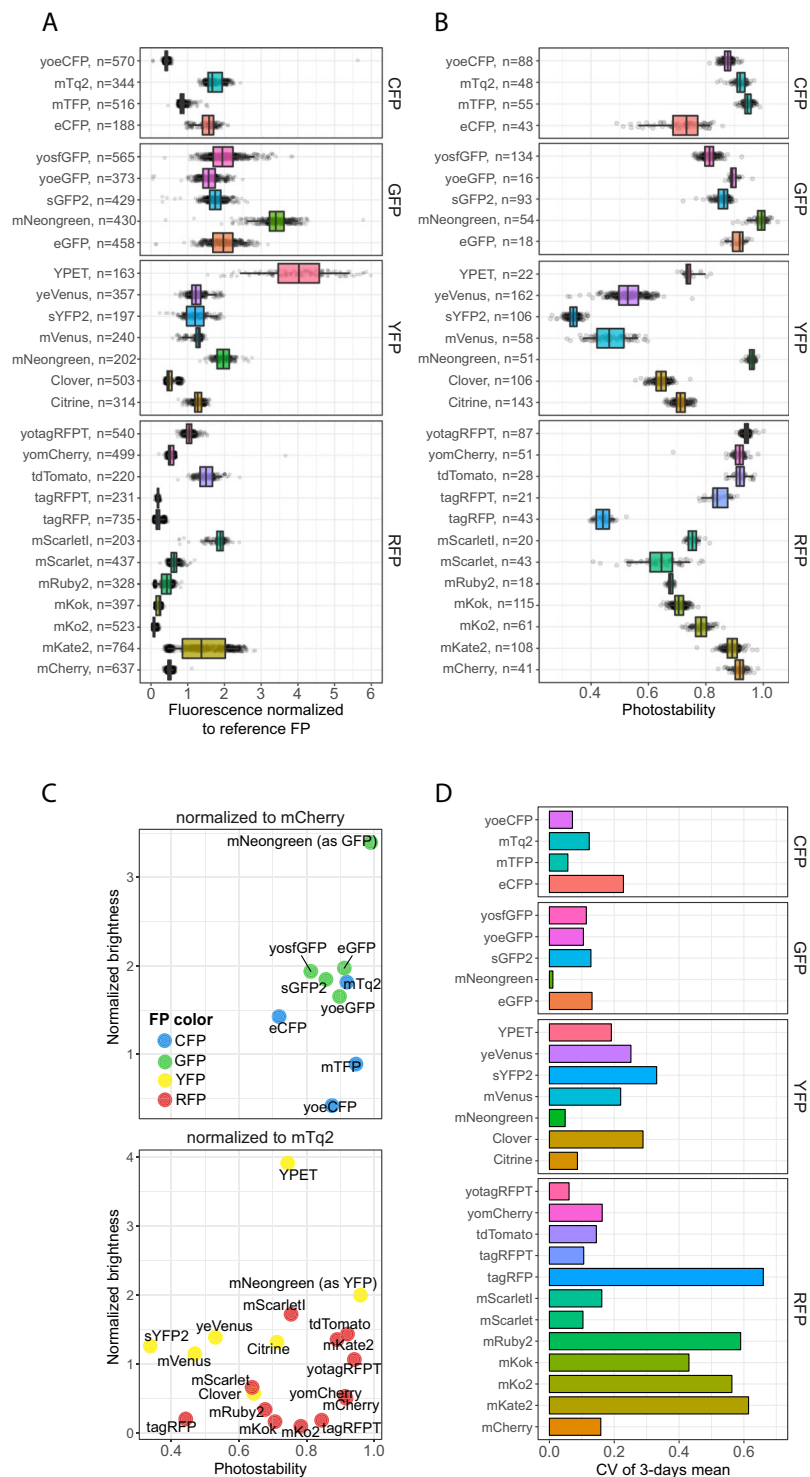


Figure 2. *In vivo* brightness and photostability of FPs. **(A)** *In vivo* brightness of FPs measured by dividing the fluorescence intensity of the FP of interest by the fluorescence of the control FP (either mTq2 or mCherry). **(B)** Photostability of FPs. Per FP, a time-lapse movie was recorded and the photostability was measured as the fluorescent fraction of the last time frame compared to the first frame. Dots represent relative brightness or photostability of an individual cell, boxes indicate median with quartiles, whiskers indicate the 0.05–0.95 fraction of the datapoints. **(C)** Overview of the brightness and photostability of all characterised FPs. **(D)** Coefficient of variation (CV) of the mean brightness of 3 days as an indication of day-to-day variation.

than the optimum wavelength for the specific FP. The identified photochromic FPs can create biased fluorescence readouts and should be used carefully. When these FPs are used with multiple excitation wavelengths, bleaching corrections can be performed with our supplied model.

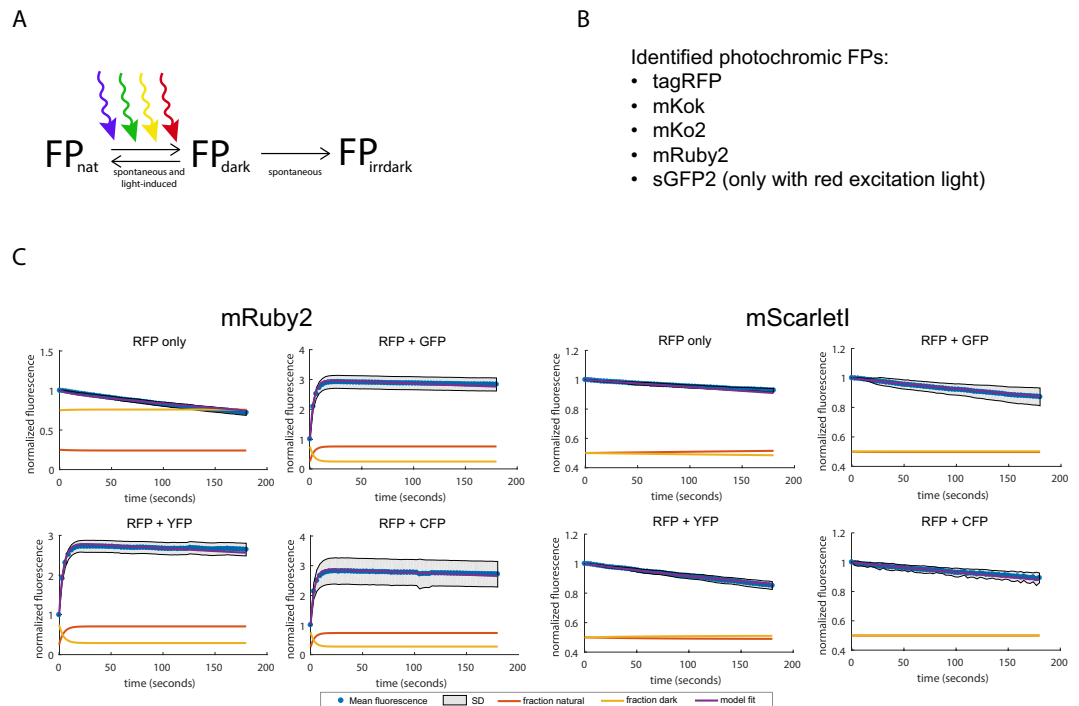


Figure 3. Photochromism characterisation, determined by recording bleaching data of FPs using single-wavelength and dual-wavelength excitation. **(A)** Model used to fit the bleaching data and obtain photochromism parameters. **(B)** The identified photochromic FPs. **(C)** Bleaching plots including model fitting of the photochromic mRuby2 and the non-photochromic mScarletI. Dots represent mean fluorescence values at the specific time point, normalized to the first frame. Shades indicate standard deviation. Red and yellow lines indicate the fitted natural (fluorescent) FP fraction and reversible dark FP fraction, respectively. Blue lines indicate the fitted mean fluorescence, normalized to the first frame. Used wavelengths are shown above each graph.

pH stability. Next, we determined the brightness of all 27 FPs at different pH values to determine which are usable in acidic environments or when intracellular pH is dynamic. We measured pH-induced quenching *in vivo* by incubating cells in a citric-acid phosphate buffer with pH values ranging from 3–8. In order to ensure equilibration of the intracellular pH with the buffer we added the ionophore 2,4-DNP, which is known to remove the pH gradient in yeast⁵¹. FP fluorescence was measured and a Hill fit was performed to obtain the pKa values and Hill-coefficients (Figs 4A, S1 and Table S2). We also determined the pH value that gives an absolute 50% decrease compared to the pH value with the highest fluorescence, as the pKa value does not always give the pH value with 50% fluorescence decrease when FPs show offsets (Fig. 4C). Examples are sYFP2, mScarletI, mScarlet or Clover, which have different pH_{50%} value compared to their pKa. We also found 7 FPs with a pKa that differed more than 0.5 compared to previously published *in vitro* data (Table S2). mTq2, mTFP and Clover showed increased pH sensitivity; In contrast, eCFP, YPET, mKate2 and mScarletI showed decreased pH sensitivity. We confirmed the difference between our *in vivo* assessment with *in vitro* assessments (Fig. 4B). Therefore, *in vitro* quenching characterisation is not representative for the *in vivo* FP behaviour, at least not in yeast cells.

To be insensitive to pH changes, the Hill coefficient of a pH-curve should be high and the pKa should be low; then the curve shows a plateau where the fluorescence does not change at physiological pH values. Figure 4A shows that CFPs and RFPs show a low pKa whereas most YFPs and GFPs have a higher pKa. Of the ones with a low pKa, only yomCherry, mCherry, YPET, tagRFP, yotagRFPT and tdTomato show also high Hill coefficient. Therefore, these FPs are most pH-insensitive. In conclusion, pH sensitivity of many FPs is different *in vivo* than *in vitro*. Of the identified bright and photostable FPs, tdTomato is the most pH robust. Although less pH robust, mTq2, mNeongreen and YPET are still the best CFP, GFP and YFP variants, respectively.

Yeast codon optimization improves expression and changes FP characteristics. In our assays we identified mTq2, mNeongreen, YPET, tdTomato and mScarletI as the best performing FPs for yeast. These FPs are bright, photostable, pH robust and have a low day-to-day variation. However, most of these FPs have a low expression (Fig. 5C), making them unsuitable for either plasmid-based overexpression or tagging of proteins in yeast. Therefore, we created codon-optimized variants of these FPs, which we named yeast FPs (yFPs). We also included ymVenus as this FP was also an acceptable YFP. Since YPET is known to be not monomeric, we synthesised yeast monomeric YPET (ymYPET: YPET A206K, F208S, E231L, N234D). The novel yFPs were rescreened for photostability, pH stability and brightness (Fig. 5). ymVenus, ymNeongreen and ymTq2 showed a significant increase in brightness whereas ytdTomato and ymScarletI had a decreased brightness compared to the non-optimized versions (Tukey HSD, $p < 0.01$). ymYPET appeared 4 times less bright, indicating that the introduced mutations affect its brightness. Still, ymYPET is one of the brightest YFPs available. Photostability remained the same for

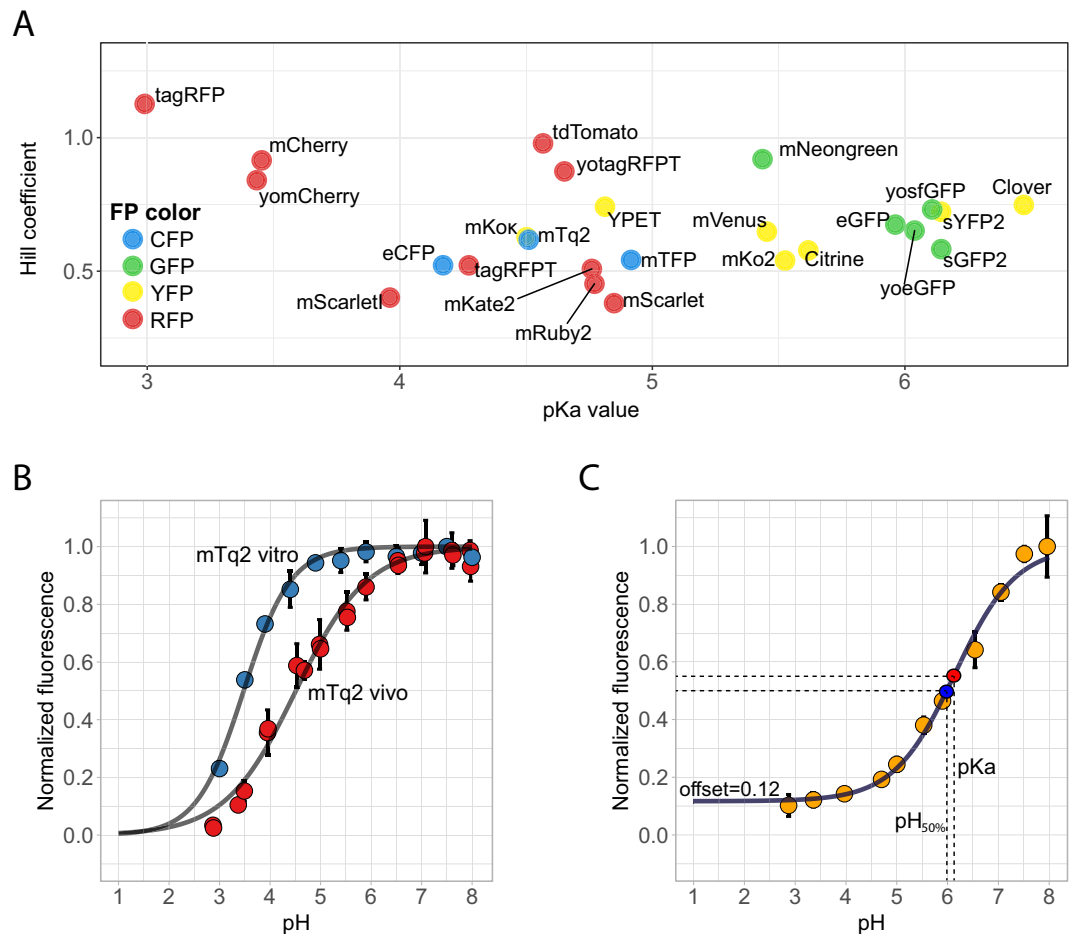


Figure 4. pH sensitivity of FPs. (A) Yeast cells were incubated for 2 hours in citric-acid/ Na_2HPO_4 buffers set at pH 3–8 with 2 mM 2,4-DNP and fluorescence was measured using a fluorescent plate reader. Per FP, at least 3 technical replicates were measured. Afterwards, fluorescence was normalized to the pH giving the highest fluorescence and a Hillfit was performed to determine the Hill coefficient and pKa value, plotted at the y- and x-axis, respectively. (B) mTq2 is an example of an FP that shows different pH sensitivity. pH calibration *in vitro* was performed using purified proteins in a Citric Acid – Sodium Citrate buffer (pH 3–5.4) and a $\text{Na}_2\text{HPO}_4/\text{Na}_2\text{HPO}_4$ 0.1 M buffer (pH 5.9–8). Dots represent the mean of at least 3 replicates, error bars indicate SD. (C) pH curve of sYFP2 which shows an offset (fluorescence plateau) at low pH. This offset gives different values of the pKa (red point, which is the pH that gives a 50% decrease between 1 and the offset) and the pH_{50%} which gives an absolute 50% decrease in fluorescence (blue point). Dots represent mean of at least 3 replicates, error bars indicate SD.

yFPs, except for ymVenus and ymYPET (Tukey HSD, $p > 0.01$). Fluorescent lifetimes were within a 0.1 ns range with previously reported values. pH stability, spectral properties, and day-to-day variation were comparable as well (Figs 5E, 6 and S2, Tables 1 and S2). As anticipated, the expression of yFPs is largely increased (Fig. 5C), showing the importance of optimized codon-usage on protein expression. Lastly, to determine whether the yFPs are truly monomeric, we performed an OSER assay by fusing the yFPs to the first 29 amino acids of cytochrome p450, which is targeted to the endoplasmic reticulum⁵². Non-monomeric FPs will form multimeric complexes which generates bright spots in a cell, named whorls. The amount of whorls or percentage of cells with a whorl is used as an estimate for monomerism. Since this assay was developed for mammalian cells, we tested the assay in yeast by including yeVenus and dTomato, which are known to be nonmonomeric^{2,15}. As expected, yeVenus and dTomato showed a significant higher amount of whorls per cell compared to all yFPs, except for ymVenus and ytdTomato (Fig. 7). ymTq2, on the other hand, showed only a significantly lower amount of whorls compared to yeVenus (Fig. 7, Tukey HSD, $\alpha = 0.01$). We conclude that only ymVenus (yeVenus A206K) and ytdTomato are not monomeric and are therefore inferior to ymYPET and ymScarletI, respectively. Figure 7 shows that all other codon-optimized FPs are monomeric according to our assay and therefore suitable for use in yeast cells.

In summary, codon-optimization may change the protein properties and should therefore be followed by a comprehensive *in vivo* characterization.

yFPs show improved readout and enable fluorescent-based quantification of the enzyme FBpase. One benefit of using yeast is the opportunity to tag proteins endogenously. To do so, we created

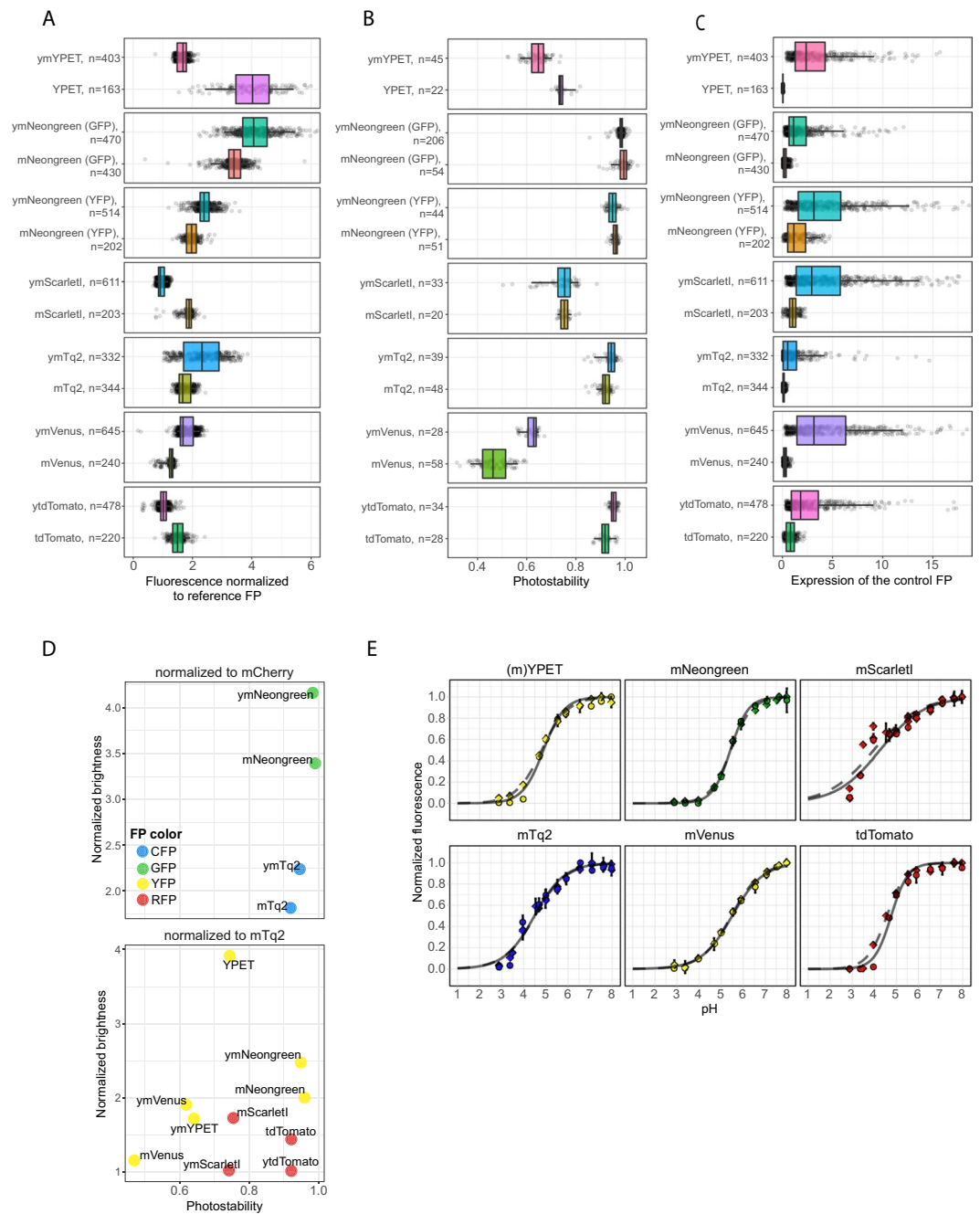


Figure 5. Comparison of yeast codon-optimized FPs (yFPs) versus the conventional FPs. **(A)** Comparison of FP brightness. Dots represent FP brightness of an individual cell, boxes indicate median with quartiles, whiskers indicate the 0.05–0.95 fraction of the datapoints. **(B)** Comparison of photostability. Dots represent FP photostability of an individual cell, boxes indicate median with quartiles, whiskers indicate the 0.05–0.95 fraction of the datapoints. **(C)** Comparison of FP expression. Dots represent fluorescence of the reference FP of an individual cell (divided by the total amount of exposure), boxes indicate median with quartiles, whiskers indicate the 0.05–0.95 fraction of the datapoints. **(D)** Overview of both the photostability and brightness of the yFPs and their FP counterparts. **(E)** pH sensitivity of the yFPs compared to the FPs. Solid lines with circles show yFPs fit and the data points, respectively. Dashed lines with rhombic points show FPs fit and the data points, respectively.

a library of tagging vectors containing the yFP palette. We tested whether the newly codon-optimized FPs can improve experimental readouts for endogenous tagging. FBPase, an enzyme expressed in yeast under gluconeogenic conditions (e.g. growth on ethanol) was fused with yoeGFP, yosfGFP and ymNeogreen. We compared the green fluorescent signal of these strains when growing on either glucose (without FBPase expression) or ethanol (with FBPase expression) using flow cytometry (Fig. 8). As control strain we included yeast cells without any construct since the strains with tagged FBPase also do not have a plasmid present. Figure 8 shows that yosfGFP

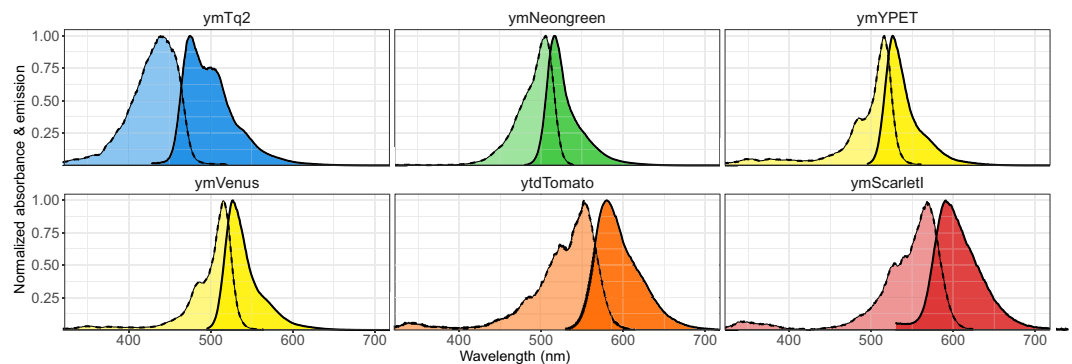


Figure 6. Excitation and emission spectra of the best performing yFPs. Spectra were normalized to the highest excitation or emission value per yFP. Dotted lines show excitation spectra. Solid lines show emission spectra.

(43% overlap) and yoeGFP (51% overlap with WT) are inferior to ymNeogreen (1% overlap with WT) regarding GFP signal when fused to FBPAse. The signal of ymNeogreen is not due to aspecific or leaky expression as this strain shows the same low (background) fluorescence as the WT strain when grown in glucose. Therefore, the use of the newly developed ymNeogreen enables flow cytometry-based monitoring of FBPAse expression in yeast cells, which is not feasible using the conventional FPs. By this, we show that the use of the codon-optimized FPs can greatly improve fluorescent-based readouts.

Discussion

Comprehensive data on the *in vivo* performance of FPs in eukaryotes grown at modest temperature (30 °C) such as the model organism *Saccharomyces cerevisiae* is poorly available. Therefore, we systematically characterised FPs *in vivo* in budding yeast. Key in our approach is the T2A linker peptide, through which we determined relative brightness of FPs by comparing it to a control FP. In the same strains, we tested FPs for photostability and pH sensitivity. Lastly, we provide a comprehensive and systematic analysis of the tendency of FPs for photochromism and we provide a model to correct for it when such FPs are still being used in multicolor experiments.

The brightness of FPs shows large differences for various FPs compared to *in vitro* data (Table S2), showing that *in vivo* conditions indeed affect FP behaviour. We suspect -but have not tested- that temperature is an important factor, since yeast grows optimally at 30 °C, but nearly all FPs are optimized for maturation at 37 °C^{7,8,35}. Interestingly, all bad performing FPs indeed show a relatively bad maturation at 32 °C³⁵. Yet, two observations suggest that the effect of temperature on FP performance is not generally applicable. First, mKate2 shows bad maturation at low temperatures but is bright in our analysis. Second, in *C. Elegans*, that also grows at lower temperatures, mNeogreen is less bright than in our study¹⁷. Brightness also depends on the excitation and emission settings; since FPs do not have identical spectra, better fitting filters could increase brightness. The plasmids that we have constructed allow anyone to rapidly determine the practical brightness under their own specific conditions.

Our method can also assess the variation of brightness between different days. Various RFPs and YFPs show a high day-to-day variation (Fig. 2D), which may be explained by hampered FP maturation due to the low temperature, as most of the FPs with a high variation are also known for bad maturation³⁵. However, other factors such as translation and folding efficiency (affected by chaperones) could also affect maturation efficiency and day-to-day variation.

We found that most FPs show comparable photostability as previously characterised. Importantly, FPs with a high photostability (e.g. ymNeogreen) give imprecise T_{half} times, which is due to the lack of bleaching. Therefore, we believe that the photostability parameter given is a better approximation for photostability than the obtained T_{half} times. Photostability is also largely dependent on the setup and specific exposure type and is therefore difficult to compare with previously obtained data², but our data can give an indication. A photobleaching-related phenomenon is photochromism, which we systematically characterised for all FP-T2A-FP constructs. The control FPs in the T2A constructions unlikely affect photochromism as this behaviour is determined by measuring only the fluorescence of the FP of interest. Besides, we did not observe any photoswitching of mTq2 or mCherry, which could affect the fluorescence readout of the FP of interest. We show that photochromism only occurs when exciting with a higher-energy wavelength than the optimum wavelength of the specific FP. It could be that this light energy changes the photochrome conformation and thereby changes the fluorescent state the FP is in, as suggested before²⁸. Additionally, the specific wavelength used does not largely affect photochromic behaviour (Table S2). Interestingly, various photochromic FPs already start in a dark-state and are immediately pushed into a fluorescent state by excitation lights of shorter wavelengths than the optimal wavelength for the FP. This causes photoactivation, which can make cells more than 3 times brighter than their starting brightness. Photochromism can be used as an advantage. Using photochromic FPs under dual-excitation for long timelapse experiments reduces bleaching, making these FPs highly photostable (Fig. 3C). Still, for other experiments, photochromic FPs should be used with care in any organism as they can generate unnoticed quantitative artefacts which can result in wrongly drawn conclusions. With the supplied model, we could fit all bleaching kinetics obtained in the present study (Fig. S3). Therefore, we expect that our set of equations that make up the model can be used to quantify, predict and correct for complex bleaching kinetics using other setups and conditions as well.

FP	Color ^a	Exc. max ^b	Em. max ^c	<i>In vivo</i> brightness \pm SD ^d	Photo-stability ^e	T _{half} 1 ^f	T _{half} 2 ^f	Daily var. ^g	Life-time ^h	Monomerism \pm SD ⁱ	pKa ^j	Hill coeff. ^k
ymTq2	CFP	439	475	2.24	0.94 \pm 0.03	490		0.30	4	0.20 \pm 0.42	4.48	0.64
ymNeongreen	GFP	506	517	4.16	0.98 \pm 0.01	0.19	0.001	0.03	3.2	0.15 \pm 0.60	5.42	1.08
ymNeongreen	YFP	506	517	2.48	0.95 \pm 0.02	5752	34	0.05	3.2	0.15 \pm 0.60	5.42	1.08
ymVenus	YFP	515	527	1.90	0.62 \pm 0.03	32	0.40	0.14	2.9	0.49 \pm 0.81	5.50	0.62
ymYPET	YFP	516	526	1.72	0.64 \pm 0.04	46	0.14	0.13	3	0.12 \pm 0.40	4.89	0.91
ytdTomato	RFP	552	580	1.01	0.95 \pm 0.01	1460		0.07	n.d.	0.30 \pm 0.67	4.76	1.14
ymScarletI	RFP	568	591	1.02	0.74 \pm 0.07	118		0.12	n.d.	0.15 \pm 0.42	4.26	0.44

Table 1. *In vivo* properties of the yFPs. ^aSpectral color class. ^bExcitation maximum. ^cEmission maximum. ^dBrightness in budding yeast normalized to either mCherry (for CFPs and GFPs) or mTq2 (for YFPs and RFPs). ^eFluorescent fraction remaining at the last timeframe, normalized to the first frame. ^fT-half times in seconds obtained via a one-phase or two-phase exponential decay fit. ^gCoefficient of variation (CV) of the mean brightness of 3 days as an indication of day-to-day variation. ^hFluorescence lifetime in nanoseconds determined by frequency domain. ⁱMonomerism depicted by the mean amount of OSER structures per cell. ^jpH value giving 50% decrease in fluorescence. ^kHill coefficient of the pH stability. Abbreviations: SD; standard deviation, n.d.; not determined.

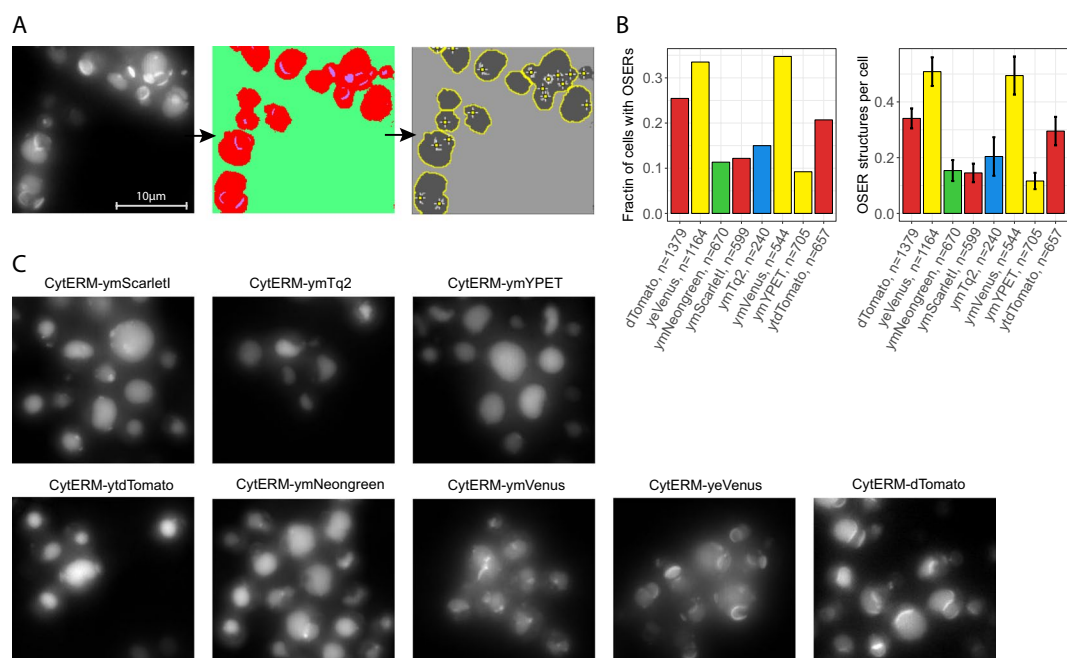


Figure 7. Monomerism of the yFPs. Cells expressing Cyterm-(y)FP were grown overnight at 30 °C and incubated for at least 1 hour at room temperature before microscope visualization. (A) Example of cells showing OSER structures and the pipeline to count OSER structures. (B) Monomerism of various FPs depicted by the fraction of cells with an OSER structure (left graph) and amount of OSER structures per cell (right graph). Error bars indicate 95CI. (C) Examples of the OSER assays per FP (max intensity projection of the Z-stack is shown).

Lastly, to our knowledge, the pH sensitivity was determined for the first time *in vivo* for all FPs. We found that the pKa values of FPs can differ up to more than 0.5 pH point between *in vivo* and *in vitro* for several FPs (Table S2). Although the CFPs were pH-robust with pKas lower than 5 and a Hill coefficient of approximately 0.5, we found them more pH-sensitive than determined *in vitro* (Fig. 4B). For GFPs, mNeongreen is the best performer although it is still rather pH sensitive. Yet, a pH-robust GFP (pKa of 3.4) was developed recently³³. In *S. cerevisiae*, pH is tightly controlled but very dynamic and even implied as second messenger^{34,53,54}, and so experiments that affect the physiology of yeast should preferably be studied with pH-insensitive FPs. Which factors specifically affect pH sensitivity *in vivo* is not known, although it is known that ions such as Cl⁻ affect the pH curves⁷. We believe that also other cellular components such as adenosines, NAD and NADP can affect these curves as they also affect CFP-YFP FRET ratios⁵⁵.

Based on the measured FP traits, we created yeast codon-optimized FP of the best performing FPs, which we designated as ymTq2, ymNeongreen, ymYPET, ytdTomato and ymScarletI. We also performed an A206K mutagenesis on yeVenus to generate ymVenus. We found -to our surprise- that codon-optimization affected brightness even though the primary sequence is unaffected. Codon optimization probably does not affect the

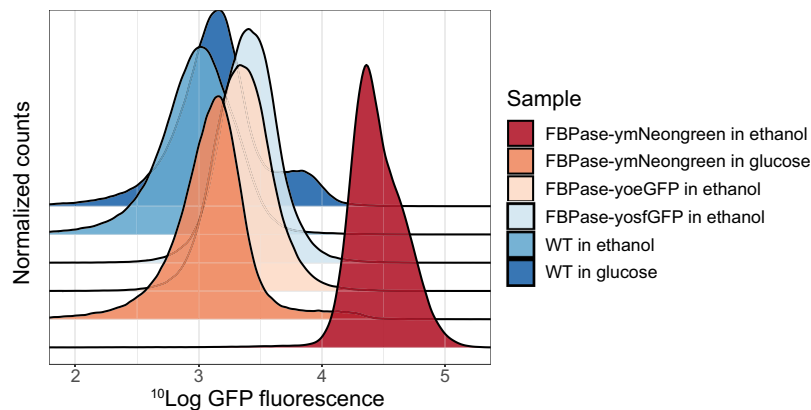


Figure 8. Normalized frequency plots of GFP fluorescence of Cen.PK yeast cells with FBPase-yosfGFP, FBPase-yoeGFP, FBPase-ymNeogreen or WT. Cells were grown in YNB medium containing either glucose (no FBPase expression), or ethanol (with FBPase expression) and GFP fluorescence was measured using flow cytometry.

quantum yield and absorption as these are determined by the protein structure itself. Yet, the folding, functioning and degradation of proteins can be affected by codon optimization and this can affect the practical brightness of FPs^{56,57}. This is the case for all yFPs: ymVenus, ymTq2, ymNeogreen show increased brightness whereas ymScarletI, ytdTomato and ymYPET show decreased brightness. Although ytdTomato and ymScarletI have decreased brightness, they have improved FP expression, making the absolute signal comparable to their non-optimized variants (Fig. 5A,C). However, the decreased practical brightness can be caused by increased degradation of the FPs. Therefore, both the codon-optimized as the original variant of tdTomato and mScarletI should be used carefully for endogenous tagging as they can affect protein levels, either by inducing low expression (for the original FP variants) or by increased protein degradation (for the codon-optimized variants). The non-optimized variants of ytdTomato and ymScarletI can be used for plasmid-based overexpression as these FPs are brighter. One important note is the size of tdTomato, which is twice the size of the other FPs. Lastly, the large decrease in ymYPET brightness compared to YPET is probably also caused by the altered protein structure to make it monomeric. Yet, ymVenus is not monomeric, making ymYPET still the preferred YFP with a relatively high brightness, high pH-insensitivity and high photostability for the YFP class.

Finally, we show that the developed tagging vectors can be conveniently used to tag proteins endogenously in yeast. We used the tagging vectors to tag FBPase with yoeGFP, yosfGFP or the novel ymNeogreen. The use of ymNeogreen increases the dynamic range of a fluorescent-based flow cytometry experiment (Fig. 8). By using ymNeogreen instead of yoeGFP or yosfGFP, we were able to fully separate populations with an induced or uninduced FBPase. This shows the importance of performing experiments with the correct –and best performing– FPs, even compared to “gold standard FPs” such as eGFP.

In conclusion, we show that FP characteristics are context dependent and should be characterised per specific organism *in vivo*. The generated yFP palette contains the best performing FP regarding brightness, photostability, photochromism and pH robustness for every spectral class in yeast to date. The use of the yFPs opens new experimental possibilities and enhances fluorescent-based readouts compared to the previously codon-optimized FPs^{18,58}. We anticipate that our results will also be more representative for FP performance in organisms grown at low temperatures (e.g. zebrafish, *Caenorhabditis elegans*, *Drosophila melanogaster* and *Arabidopsis*) than mammalian-based characterisations.

Data Availability

Most plasmids and plasmid information are available available from addgene (https://www.addgene.org/Bas_Teusink/). Other plasmids not available on addgene are available from the corresponding author upon request. Raw data is available online (<https://doi.org/10.5281/zenodo.1468183>).

References

- Prasher, D. C., Eckenrode, V. K., Ward, W. W., Prendergast, F. G. & Cormier, M. J. Primary structure of the *Aequorea victoria* green-fluorescent protein. *Gene* **111**, 229–233 (1992).
- Cranfill, P. J. *et al.* Quantitative assessment of fluorescent proteins. *Nat. Methods* **13**, 557–562 (2016).
- Kremers, G. J., Goedhart, J., Van Munster, E. B. & Gadella, T. W. J. Cyan and yellow super fluorescent proteins with improved brightness, protein folding, and FRET forster radius. *Biochemistry* **45**, 6570–6580 (2006).
- Kremers, G.-J., Goedhart, J., van den Heuvel, D. J., Gerritsen, H. C. & Gadella, T. W. J. Improved Green and Blue Fluorescent Proteins for Expression in Bacteria and Mammalian Cells. *Biochemistry* **46**, 3775–3783 (2007).
- Shaner, N. C. *et al.* Improving the photostability of bright monomeric orange and red fluorescent proteins. *Nat. Methods* **5**, 545–551 (2008).
- Yang, T. T., Cheng, L. & Kain, S. R. Optimized codon usage and chromophore mutations provide enhanced sensitivity with the green fluorescent protein. *Nucleic Acids Res.* **24**, 4592–4593 (1996).
- Griesbeck, O., Baird, G. S., Campbell, R. E., Zacharias, D. A. & Tsien, R. Y. Reducing the environmental sensitivity of yellow fluorescent protein. Mechanism and applications. *J. Biol. Chem.* **276**, 29188–29194 (2001).

8. Nagai, T. *et al.* A variant of yellow fluorescent protein with fast and efficient maturation for cell-biological applications. *Nat. Biotechnol.* **20**, 87–90 (2002).
9. Heim, R. & Tsien, R. Y. Engineering green fluorescent protein for improved brightness, longer wavelengths and fluorescence resonance energy transfer. *Curr. Biol.* **6**, 178–182 (1996).
10. Goedhart, J. *et al.* Structure-guided evolution of cyan fluorescent proteins towards a quantum yield of 93%. *Nat. Commun.* **3**, 751 (2012).
11. Pédillacq, J.-D., Cabantous, S., Tran, T., Terwilliger, T. C. & Waldo, G. S. Engineering and characterization of a superfolder green fluorescent protein. *Nat. Biotechnol.* **24**, 79–88 (2006).
12. Lam, A. J. *et al.* Improving FRET dynamic range with bright green and red fluorescent proteins. *Nat. Methods* **9**, 1005–1012 (2012).
13. Shaner, N. C. *et al.* A bright monomeric green fluorescent protein derived from *Branchiostoma lanceolatum*. *Nat. Methods* **10**, 407–409 (2013).
14. Merzlyak, E. M. *et al.* Bright monomeric red fluorescent protein with an extended fluorescence lifetime. *Nat. Methods* **4**, 555–557 (2007).
15. Shaner, N. C. *et al.* Improved monomeric red, orange and yellow fluorescent proteins derived from *Discosoma* sp. red fluorescent protein. *Nat. Biotechnol.* **22**, 1567–1572 (2004).
16. Yang, T. T. *et al.* Improved fluorescence and dual color detection with enhanced blue and green variants of the green fluorescent protein. *J. Biol. Chem.* **273**, 8212–8216 (1998).
17. Heppert, J. K. *et al.* Comparative assessment of fluorescent proteins for *in vivo* imaging in an animal model system. *Mol. Biol. Cell* **27**, 3385–3394 (2016).
18. Lee, S., Lim, W. A. & Thorn, K. S. Improved blue, green, and red fluorescent protein tagging vectors for *S. cerevisiae*. *PLoS One* **8**, e67902 (2013).
19. Bindels, D. S. *et al.* mScarlet: a bright monomeric red fluorescent protein for cellular imaging. *Nat. Methods* **14**, 53–56 (2017).
20. Lichtman, J. W. & Conchello, J.-A. Fluorescence microscopy. *Nat. Methods* **2**, 910–919 (2005).
21. Donnert, G., Eggeling, C. & Hell, S. W. Major signal increase in fluorescence microscopy through dark-state relaxation. *Nat. Methods* **4**, 81–86 (2007).
22. Sinnecker, D., Voigt, P., Hellwig, N. & Schaefer, M. Reversible photobleaching of enhanced green fluorescent proteins. *Biochemistry* **44**, 7085–7097 (2005).
23. Dickson, R. M., Cubitt, A. B., Tsien, R. Y. & Moerner, W. E. On/off blinking and switching behaviour of single molecules of green fluorescent protein. *Nature* **388**, 355–358 (1997).
24. Dean, K. M. *et al.* Analysis of red-fluorescent proteins provides insight into dark-state conversion and photodegradation. *Biophys. J.* **101**, 961–969 (2011).
25. Mizuno, H. *et al.* Light-dependent regulation of structural flexibility in a photochromic fluorescent protein. *Proc. Natl. Acad. Sci. USA* **105**, 9227–9232 (2008).
26. Henderson, J. N., Ai, H., Campbell, R. E. & Remington, S. J. Structural basis for reversible photobleaching of a green fluorescent protein homologue. *Proc. Natl. Acad. Sci.* **104**, 6672–6677 (2007).
27. Andresen, M. *et al.* Structure and mechanism of the reversible photoswitch of a fluorescent protein. *Proc. Natl. Acad. Sci.* **102**, 13070–13074 (2005).
28. Pletnev, S. *et al.* A crystallographic study of bright far-red fluorescent protein mKate reveals pH-induced cis-trans isomerization of the chromophore. *J. Biol. Chem.* **283**, 28980–28987 (2008).
29. Tsien, R. Y. The green fluorescent protein. *Annu. Rev. Biochem.* **67**, 509–544 (1998).
30. Baird, G. S., Zacharias, D. A. & Tsien, R. Y. Biochemistry, mutagenesis, and oligomerization of DsRed, a red fluorescent protein from coral. *Proc. Natl. Acad. Sci.* **97**, 11984–11989 (2000).
31. Zacharias, D. A., Violin, J. D. & Newton, A. C. Partitioning of Lipid-Modified Monomeric CFPs into Membrane Microdomains of Live Cells. *Science* **296**, 913–916 (2002).
32. Campbell, R. E. *et al.* A monomeric red fluorescent protein. *Proc. Natl. Acad. Sci. USA* **99**, 7877–7882 (2002).
33. Shinoda, H. *et al.* Acid-Tolerant Monomeric GFP from *Olindias formosa*. *Cell Chem. Biol.* **25**, 330–338 (2018).
34. Oriij, R. *et al.* Genome-wide analysis of intracellular pH reveals quantitative control of cell division rate by pH(c) in *Saccharomyces cerevisiae*. *Genome Biol.* **13**, R80 (2012).
35. Balleza, E., Kim, J. M. & Cluzel, P. Systematic characterization of maturation time of fluorescent proteins in living cells. *Nat. Methods* **15**, 47–51 (2018).
36. Chudakov, D., Matz, M., Lukyanov, S. & Lukyanov, K. Fluorescent Proteins and Their Applications in Imaging Living Cells and Tissues. *Physiol. Rev.* **90**, 1103–1163 (2010).
37. Reid, B. G. & Flynn, G. C. Chromophore formation in green fluorescent protein. *Biochemistry* **36**, 6786–6791 (1997).
38. Heim, R., Prasher, D. C. & Tsien, R. Y. Wavelength mutations and posttranslational autoxidation of green fluorescent protein. *Proc. Natl. Acad. Sci. USA* **91**, 12501–12504 (1994).
39. Gietz, R. D. & Schiestl, R. H. Quick and easy yeast transformation using the LiAc/SS carrier DNA/PEG method. *Nat. Protoc.* **2**, 35–37 (2007).
40. Arganda-Carreras, I. *et al.* Trainable Weka Segmentation: A machine learning tool for microscopy pixel classification. *Bioinformatics* **33**, 2424–2426 (2017).
41. Boudreau, C. *et al.* Excitation Light Dose Engineering to Reduce Photo-bleaching and Photo-toxicity. *Sci. Rep.* **6**, 30892 (2016).
42. Mastop, M. *et al.* Characterization of a spectrally diverse set of fluorescent proteins as FRET acceptors for mTurquoise2. *Sci. Rep.* **7**, 11999 (2017).
43. Gardner, J. M. & Jaspersen, S. L. Manipulating the yeast genome: Deletion, mutation, and tagging by PCR. *Methods Mol. Biol.* **1205**, 45–78 (2014).
44. Goedhart, J. *et al.* Bright cyan fluorescent protein variants identified by fluorescence lifetime screening. *Nat. Methods* **7**, 137–139 (2010).
45. Slubowski, C. J., Funk, A. D., Roesner, J. M., Paulissen, S. M. & Huang, L. S. Plasmids for C-terminal tagging in *Saccharomyces cerevisiae* that contain improved GFP proteins, Envy and Ivy. *Yeast* **32**, 379–387 (2015).
46. Bajar, B. T. *et al.* Improving brightness and photostability of green and red fluorescent proteins for live cell imaging and FRET reporting. *Sci. Rep.* **6**, 1–12 (2016).
47. Goedhart, J. *et al.* Quantitative Co-Expression of Proteins at the Single Cell Level – Application to a Multimeric FRET Sensor. *PLoS One* **6**, e27321 (2011).
48. van der Krogt, G. N. M., Ogink, J., Ponsioen, B. & Jalink, K. A Comparison of Donor-Acceptor Pairs for Genetically Encoded FRET Sensors: Application to the Epac cAMP Sensor as an Example. *PLoS One* **3**, e1916 (2008).
49. Kremers, G. J., Hazelwood, K. L., Murphy, C. S., Davidson, M. W. & Piston, D. W. Photoconversion in orange and red fluorescent proteins. *Nat. Methods* **6**, 355–358 (2009).
50. Goedhart, J., Vermeer, J. E. M., Adjobo-Hermans, M. J. W., van Weeren, L. & Gadella, T. W. J. Sensitive Detection of p65 Homodimers Using Red-Shifted and Fluorescent Protein-Based FRET Couples. *PLoS One* **2**, e1011 (2007).
51. Thevelein, J. M. *et al.* Regulation of the cAMP level in the yeast *Saccharomyces cerevisiae*: intracellular pH and the effect of membrane depolarizing compounds. *J. Gen. Microbiol.* **133**, 2191–2196 (1987).

52. Costantini, L. M., Fossati, M., Francolini, M. & Snapp, E. L. Assessing the Tendency of Fluorescent Proteins to Oligomerize Under Physiologic Conditions. *Traffic* **13**, 643–649 (2012).
53. Orij, R., Postmus, J., Beek, A. T., Brul, S. & Smits, G. J. *In vivo* measurement of cytosolic and mitochondrial pH using a pH-sensitive GFP derivative in *Saccharomyces cerevisiae* reveals a relation between intracellular pH and growth. *Microbiology* **155**, 268–278 (2009).
54. Dodd, B. J. T. & Kralj, J. M. Live Cell Imaging Reveals pH Oscillations in *Saccharomyces cerevisiae* during Metabolic Transitions. *Sci. Rep.* **7**, 1–12 (2017).
55. Moussa, R. *et al.* An evaluation of genetically encoded FRET-based biosensors for quantitative metabolite analyses *in vivo*. *J. Biotechnol.* **191**, 250–259 (2014).
56. Yu, C.-H. *et al.* Codon Usage Influences the Local Rate of Translation Elongation to Regulate Co-translational Protein Folding. *Mol. Cell* **59**, 744–754 (2015).
57. Zhou, M. *et al.* Non-optimal codon usage affects expression, structure and function of clock protein FRQ. *Nature* **495**, 111–115 (2013).
58. Sheff, M. A. & Thorn, K. S. Optimized cassettes for fluorescent protein tagging in *Saccharomyces cerevisiae*. *Yeast* **21**, 661–670 (2004).

Acknowledgements

We thank Paula Martínez Román (Erasmus scholarship BSc student at Vrije Universiteit Amsterdam) and Jip Wulfelé (BSc student at Vrije Universiteit Amsterdam) for constructing various FP constructs and assisting with experiments. We thank Rick Nijhout for constructing pFA6a-link-ymNeogreen SpHis5. We thank Laura van Weeren and Marieke Mastop (Molecular Cytology, University of Amsterdam) for constructing the plasmids for co-expressing proteins with the T2A sequence in mammalian cells. This work was supported in part by the NWO VICI grant 865.14.005 and the F10.001.03 BE Basic project under the TKIEB01003 AMBIC program.

Author Contributions

D.B., P.S. and J.G. performed experiments and analyzed data. D.H.G. wrote the photochromism model and analyzed photochromism data. D.B., J.G. and B.T. wrote the manuscript. J.G., D.H.G. and B.T. assisted with experimental design and interpretation of data. All authors approved the final manuscript.

Additional Information

Supplementary information accompanies this paper at <https://doi.org/10.1038/s41598-019-38913-z>.

Competing Interests: The authors declare no competing interests.

Publisher's note: Springer Nature remains neutral with regard to jurisdictional claims in published maps and institutional affiliations.



Open Access This article is licensed under a Creative Commons Attribution 4.0 International License, which permits use, sharing, adaptation, distribution and reproduction in any medium or format, as long as you give appropriate credit to the original author(s) and the source, provide a link to the Creative Commons license, and indicate if changes were made. The images or other third party material in this article are included in the article's Creative Commons license, unless indicated otherwise in a credit line to the material. If material is not included in the article's Creative Commons license and your intended use is not permitted by statutory regulation or exceeds the permitted use, you will need to obtain permission directly from the copyright holder. To view a copy of this license, visit <http://creativecommons.org/licenses/by/4.0/>.

© The Author(s) 2019