

# Glycine supplementation mitigates lead-induced renal injury in mice

Mojtaba Shafiekhani<sup>1,2</sup>  
Mohammad Mehdi Ommati<sup>3</sup>  
Negar Azarpira<sup>4</sup>  
Reza Heidari<sup>3</sup>  
Amir Ahmad Salarian<sup>1</sup>

<sup>1</sup>Toxin Research Center, Faculty of Medicine, Aja University of Medical Science, Tehran, Iran; <sup>2</sup>Department of Clinical Pharmacy, Faculty of Pharmacy, Shiraz University of Medical Sciences, Shiraz, Iran; <sup>3</sup>Pharmaceutical Sciences Research Center, Faculty of Pharmacy, Shiraz University of Medical Sciences, Shiraz, Iran; <sup>4</sup>Department of Pathology, Transplant Research Center, Shiraz University of Medical Sciences, Shiraz, Iran

Correspondence: Amir Ahmad Salarian  
Toxin Research Center, Faculty of Medicine, Aja University of Medical Science, Shahid Etemadzadeh AAve, West Fatemi St, Tehran, PO Box 14117-18541, Iran  
Tel +98 912 504 8700  
Fax +98 021 4382 2081  
Email Amir.salarian@ajums.ac.ir

Reza Heidari  
Pharmaceutical Sciences Research Center, Shiraz University of Medical Sciences, PO Box 1583, Shiraz 71345, Iran  
Tel +98 071 3124 2627 ext 282  
Fax +98 071 3124 2626  
Email rheidari@sums.ac.ir

**Purpose:** Lead (Pb) is an environmental pollutant responsible for various organ damages including renal injury. It seems that OS and associated events are crucial mechanisms of lead-induced renal dysfunction. The current study aimed to explore the potential protective effects of glycine against renal injury caused by lead in mice.

**Materials and methods:** Mature male mice (n=32) were allocated into four groups. The following treatment regimens were the control (vehicle-treated); Pb-acetate (20 mg/kg/day, gavage); Pb-acetate + glycine (500 mg/kg/day, IP); and Pb-acetate + glycine (1,000 mg/kg/day, IP). Pb-acetate + glycine was administered for 14 consecutive days, Pb-acetate was given first and then glycine at least 6 hours later. On day 15, the subjects were anesthetized, and samples were collected. Serum biomarkers such as BUN and serum creatinine were monitored along with formation of reactive oxygen species, lipid peroxidation, kidney GSH level, and histopathological changes.

**Results:** Based on the results, BUN and serum creatinine levels significantly increased following exposure to lead. Glycine supplementation (500 and 1,000 mg/kg, IP) decreased BUN and creatinine serum levels ( $P<0.001$ ). Biomarkers of OS were also reduced in renal tissue following glycine therapy in Pb-exposed mice ( $P<0.001$ ). Histopathological changes were observed in mice treated with lead as tubular dilation, protein cast, vacuolization, and inflammation. In this regard, glycine inhibited histopathological alterations in kidney caused by lead exposure.

**Conclusion:** It was found that glycine treatment significantly mitigated Pb-induced renal injury most likely through alleviating OS and the associated deleterious outcomes on the kidney tissue.

**Keywords:** amino acids, glycine, lead, heavy metals, oxidative stress, nephrotoxicity

## Introduction

Humans are continuously exposed to lead (Pb), a toxic heavy metal, which is an environmental pollutant.<sup>1</sup> Accumulation of lead in various organs such as bone, liver, kidney, and reproductive system is associated with deleterious effects.<sup>2-5</sup>

One of the potential adverse effects of prolonged and high-level Pb exposure is renal injury and nephropathy. Pb-induced nephropathy usually occurs as a result of prolonged exposure to this heavy metal and constant high plasma Pb level of >60 µg/dL. Meanwhile, prolonged Pb exposure at lower plasma levels could also cause nephrotoxicity.<sup>6,7</sup> According to animal and histopathological studies, the most affected segment of kidney in Pb-induced renal injury is the proximal tubule.<sup>8</sup> Tubular atrophy, interstitial fibrosis, hypertrophic arteriolar changes, and accumulation of inflammatory

cells are common histological alterations in kidney tissues in experimental models of Pb nephrotoxicity.<sup>9,10</sup>

In Pb-induced nephrotoxicity, different mechanisms have been reported.<sup>5</sup> Among these mechanisms, OS and its associated events are noteworthy,<sup>5,11,12</sup> which include increased reactive oxygen species (ROS) levels, biological target disruption, and defects in cellular antioxidant mechanisms.<sup>12,13</sup> Therefore, it seems rational to use antioxidants as therapeutic options against Pb toxicity.

Glycine, an amino acid with the simplest structure, is an intricate part of protein structure. Several pharmacological properties are attributed to glycine. Interestingly, it was found that glycine supplementation could protect biological targets against a variety of xenobiotics.<sup>14–17</sup> Some studies mentioned the nephroprotective properties of this amino acid.<sup>18</sup> Regarding its cytoprotective activity, different mechanisms are suggested. Based on the findings, glycine can effectively reduce OS caused by xenobiotics.<sup>14–17,19</sup>

The current study aimed to evaluate the potential nephroprotective effects of glycine against Pb nephrotoxicity in an animal model.

## Materials and methods

### Chemicals

Glycine (2-aminoacetic acid), malondialdehyde, thiobarbituric acid, dithiobis-2-nitrobenzoic acid, GSH, 2',7'-dichlorofluorescein diacetate (DCFH-DA), and EDTA were provided by Sigma-Aldrich (St. Louis, MO, USA). Trichloroacetic acid (TCA), dithiothreitol (DTT), ferric chloride hexahydrate, 2, 4, 6-Tris (2-pyridyl)-s-triazine (TPTZ), and Tris (hydroxymethyl) aminomethane hydrochloride were provided by Merck (Darmstadt, Germany).

### Animals and treatments

A total of 32 adult male BALB/c mice (25–30 g) were purchased from the Laboratory Animals Breeding Center, Shiraz University of Medical Sciences (SUMS), Shiraz, Iran, and kept under standard conditions (12L:12D, photo schedule; 18–22°C; appropriate ventilation, ≈40% humidity) and fed ad libitum with water and commercial rodent pellets (Behparvar®, Tehran, Iran). The animal procedures were done at Pharmaceutical Sciences Research Center, School of Pharmacy, SUMS. The local ethics committee of AJA University of Medical Sciences, Tehran, Iran, approved this study (#97-01-36-17657).

The animals received humane care and were handled regarding the guidelines of the ethics committee of AJA University of Medical Sciences.

The subjects were allocated into four groups of eight mice and the following treatment regimens were introduced: the control (vehicle-treated); Pb-acetate (20 mg/kg/day, gavage); Pb-acetate (20 mg/kg/day, gavage) + glycine (500 mg/kg/day, IP); and Pb-acetate (20 mg/kg/day, gavage) + glycine (1,000 mg/kg/day, IP). Pb-acetate + glycine were given for 14 consecutive days. Pb-acetate dose was selected based on previous studies that mentioned 20 mg/kg of Pb-acetate as the nephrotoxic dose.<sup>21</sup> Glycine was administered at least 6 hours after Pb-acetate administration. On day 15, samples were collected.

### Sample collection

Mice were anesthetized (thiopental 80 mg/kg, IP) to drain blood samples from abdominal vena cava. Both kidneys were excised and weighed. Right kidneys were kept in 10% formalin for histopathological evaluations. Total antioxidant capacity, lipid peroxidation, ROS production, and GSH contents were determined in the left kidneys.

### Histopathology and organ weight index

The kidney was weighed, using the following formula: Weight index = [Wet weight of organ (g)/Body weight (g)]×100.

Buffered formalin solution (0.4% sodium phosphate monobasic [NaH<sub>2</sub>PO<sub>4</sub>], 0.64% sodium phosphate dibasic [Na<sub>2</sub>HPO<sub>4</sub>], and 10% formaldehyde in distilled water) was used to fix the kidney samples for histopathological evaluations. The kidney samples were stained with H&E followed by paraffin embedding and cutting in 5 μm sections. Tissue histopathological alterations were evaluated by a pathologist in a blind manner using a light microscope (Olympus BX41; Olympus Optical Co. Ltd, Tokyo, Japan). Early proximal tubular vacuolization, tissue inflammation, protein cast, and tubular dilation were graded as mild (+), moderate (++), or severe (+++) in each group.

### Plasma biochemistry

To obtain plasma sedimentation, blood samples were drained into tubes (coated with EDTA) and then centrifuged (10,000 g, 15 minutes, 4°C). BUN and creatinine plasma levels were determined using commercially available kits (Pars Azmun®, Tehran, Iran).<sup>22</sup> Plasma Pb level was measured by an atomic absorption method.

### ROS formation

In total, 200 mg of kidney samples homogenized on ice in 5 mL Tris-HCl buffer (40 mM, pH = 7.4, 4°C) was mixed with 100 μL homogenized sample and 1 mL of Tris-HCl buffer

(pH 7.4) plus 10  $\mu\text{L}$  of DCFH-DA until reaching 10  $\mu\text{M}$  as the final concentration.<sup>23,24</sup> The prepared samples were incubated in the dark for 15 minutes at 37°C (Gyromax™ incubator shaker). The sample luminescence intensity was recorded with a FLUOstar Omega® multifunctional microplate reader at  $\lambda_{\text{excitation}} = 485 \text{ nm}$  and  $\lambda_{\text{emission}} = 525 \text{ nm}$ .<sup>25</sup>

## Lipid peroxidation

For this purpose, TBA reactive substances were applied; the reaction mixture contained 500  $\mu\text{L}$  of homogenized tissue (10% w/v in KCl, 1.15% w/v), 1 mL of TBA (0.375% w/v), and 3 mL of phosphoric acid (1% w/v, pH =2). After vigorously mixing the mixture and bain-marie heating for 45 minutes at 100°C, n-butanol (2 mL) was added following cooling of the sample.<sup>14,26,27</sup> Then, the samples were centrifuged at 10,000  $g$  for 5 minutes, followed by vigorous mixing. Finally, based on the developed color, the absorbance was measured at  $\lambda = 532 \text{ nm}$  with an EPOCH® plate reader (BioTek, Highland Park, VT, USA).<sup>28</sup>

## Total antioxidant capacity in kidney tissue

The Ferric Reducing Antioxidant Power (FRAP) assay evaluates absorbance changes at  $\lambda = 595 \text{ nm}$  based on the blue-colored  $\text{Fe}^{2+}$ , tripyridyltriazine, derived from the colorless oxidized  $\text{Fe}^{3+}$  using electron-donating antioxidant activity.<sup>29</sup> In order to prepare the FRAP reagent freshly, acetate buffer (10 vol, 300 mM/L, pH 3.6) was mixed with TPTZ (1 vol, 10 mM/L in 40 mM/L hydrochloric acid) and ferric chloride (1 vol, 20 mM/L). The FRAP reagent was prepared on the same day of assessment and kept in the dark. Tris-HCl buffer (250 mM Tris-HCl, 200 mM sucrose, and 5 mM DTT, pH 7.4, 4°C)

was used for kidney tissue homogenesis on ice.<sup>14,26,27,30</sup> Next, 50  $\mu\text{L}$  of the homogenized sample (50  $\mu\text{L}$ ) plus deionized water (150  $\mu\text{L}$ ) was added to the FRAP reagent (1.5 mL). Then, samples were incubated in the dark (37°C for 5 minutes), and the absorbance rate was read at  $\lambda = 595 \text{ nm}$  with an EPOCH® plate reader (BioTek). The sample's protein content was measured, using Bradford method, for data standardization.<sup>31</sup>

## Kidney GSH level

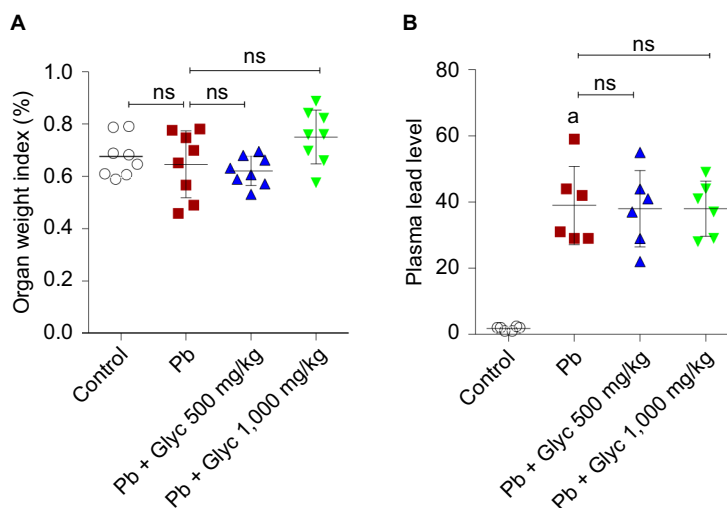
GSH levels were determined spectrophotometrically as the indicator using 5,5'-dithiobis-2-nitrobenzoic acid (DTNB).<sup>32</sup> For this purpose, to homogenize kidney samples, 200 mg of tissue was mixed with 8 mL EDTA (0.04 M, 4°C) on ice. Then, 5 mL of the provided homogenate was mixed with 4 mL of distilled water (4°C) plus 1 mL TCA (50% w/v; 4°C). The mixture was vortexed and centrifuged (10,000  $g$ , 4°C, 15 minutes). Then, the supernatant (2 mL) was added to Tris-HCl buffer (4 mL, 40 mM, pH =8.9) plus DTNB (100  $\mu\text{L}$ , 10 mM in methanol). The absorbance rate of the prepared solution was read at 412 nm with an EPOCH® plate reader (BioTek).

## Data analysis

Data are presented as mean  $\pm$  SD. Data were analyzed using one-way ANOVA with Tukey's multiple comparison tests as the post hoc. The level of significance was set at  $P < 0.05$ .

## Results

There were no significant changes in the kidney/body weight ratio in the current study, when Pb-treated and control animals were compared (Figure 1). On the contrary, no significant change in the body weight of animals was detected in the



**Figure 1** Kidney weight index (A) and Pb level (B) in mice.  
**Note:** \*Significantly different compared with the control group ( $P < 0.001$ ).  
**Abbreviations:** Glyc, glycine; ns, not significant; Pb, plasma lead.

current study. Plasma level in lead was significantly higher in Pb-exposed animals compared with the controls (Figure 1). However, there were no significant changes in plasma Pb levels between glycine-supplemented and Pb-treated animals (Figure 1).

Pb exposure significantly increased plasma biomarkers in renal damage (Figure 2). BUN and creatinine plasma levels were significantly higher in the Pb-treated mice compared with the controls (Figure 2). In addition, glycine supplementation significantly reduced serum BUN and creatinine levels (Figure 2).

OS biomarkers were significantly higher in Pb-treated animals (Figure 3). A significant level of ROS in addition to an elevated level of lipid peroxidation was observed in the Pb group compared with the controls (Figure 3). The kidney GSH content and tissue antioxidant capacity were significantly reduced in the Pb group (Figure 3). OS biomarkers of renal tissue were significantly reduced following glycine therapy (500 and 1,000 mg/kg, IP) in Pb-exposed mice (Figure 3).

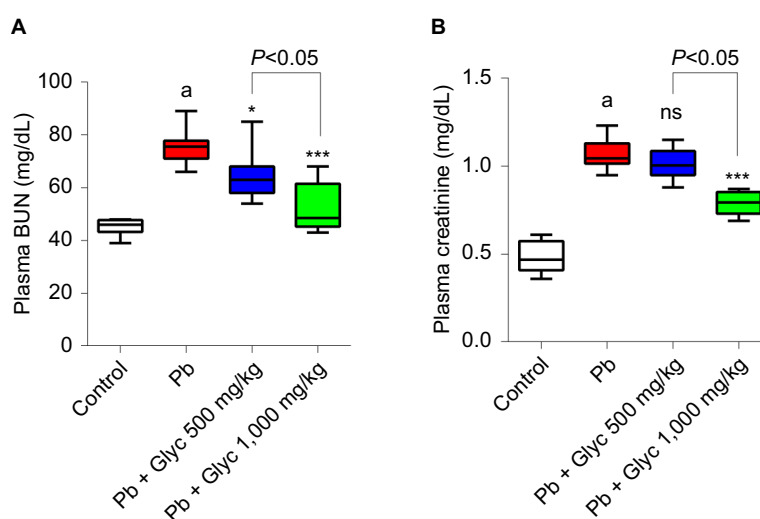
In Pb-treated mice, histopathological changes included tubular dilation, protein cast, vacuolization, and inflammation (Figure 4 and Table 1). Glycine therapy (500 and 1,000 mg/kg, IP) mitigated renal histopathological alterations in mice exposed to lead (Figure 4 and Table 1).

## Discussion

Heavy metals are toxic environmental pollutants, and exposure to them can be detrimental.<sup>33</sup> Lead (Pb) is a toxic heavy

metal, which possesses a wide range of adverse effects in humans.<sup>34</sup> Neurological abnormalities, dysregulation of the endocrine system, different types of malignancies, bone and skeletal disorders, reproductive toxicity, as well as hepatic and renal injury have been reported in association with Pb overexposure.<sup>35,36</sup> Pb-induced nephrotoxicity is a complication that could lead to renal failure.<sup>37,38</sup> Since there is no safe and convenient agent against renal dysfunction caused by lead, this study aimed to investigate the potential protective effects of the amino acid glycine against Pb nephrotoxicity. This study indicated that glycine supplementation (500 or 1,000 mg/kg, IP) mitigated Pb-induced renal injury, possibly by attenuating OS and its associated complications.

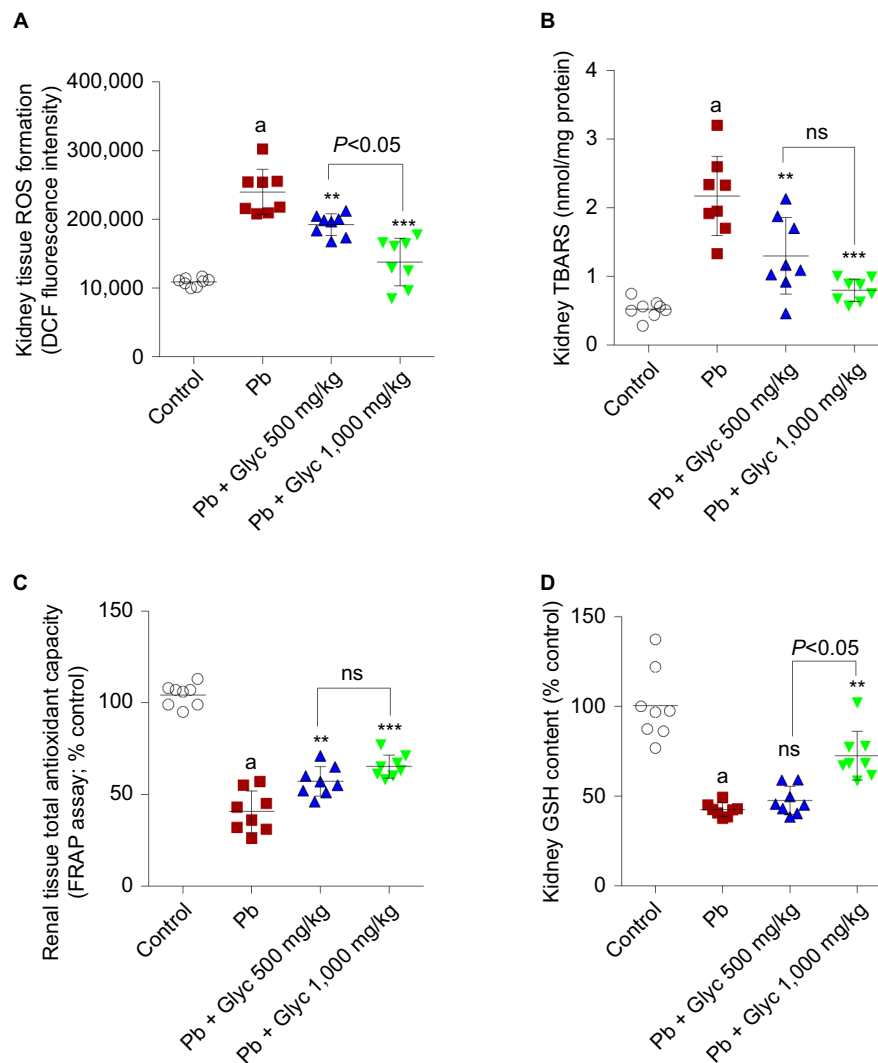
Different mechanisms have been proposed for the adverse effects of Pb toward biological systems. Among these mechanisms, OS and its associated complications have a fundamental role.<sup>39</sup> It has been well documented that Pb exposure is associated with significant ROS formation, defects in cellular antioxidant mechanisms, and disruption of biological targets such as cell membrane and different intracellular proteins.<sup>40</sup> Pb-associated OS is also important in nephrotoxicity mechanism.<sup>40,41</sup> Some investigations mentioned the importance of antioxidant therapy against Pb-induced renal injury.<sup>39</sup> The obtained results emphasize on the importance of OS and its related consequences in the pathogenesis of Pb nephrotoxicity. In consensus with previous studies, we found that Pb exposure is associated with significant ROS formation, lipid peroxidation, kidney tissue GSH depletion, and defects in the renal antioxidant



**Figure 2** Plasma biomarkers of renal injury such as BUN (A) and plasma creatinine (B) in lead (Pb)-treated mice.

**Notes:** Data are given as mean  $\pm$  SD (n=8). <sup>a</sup>Significantly different compared with the control group ( $P<0.001$ ). Asterisks indicate significantly different compared with Pb group (\* $P<0.05$ , \*\*\* $P<0.001$ ).

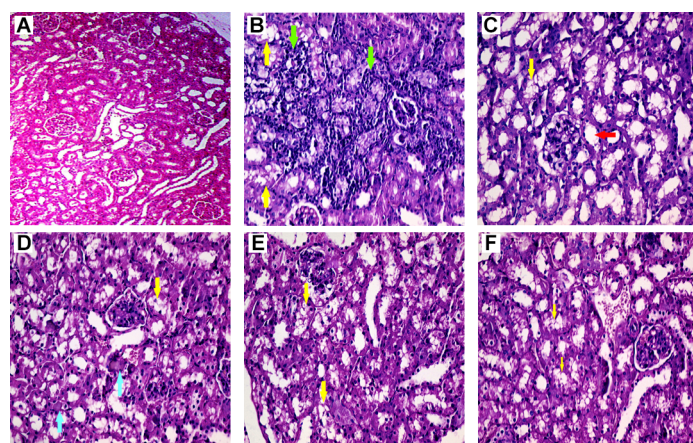
**Abbreviations:** Glyc, glycine; ns, not significant compared with Pb group; Pb, plasma lead.



**Figure 3** Biomarkers of OS in renal tissue of lead (Pb)-treated animals.

**Notes:** ROS formation (**A**). Lipid peroxidation (**B**). Total antioxidant capacity (**C**). Tissue GSH level (**D**). Data are given as mean  $\pm$  SD (n=8). \*Significantly different compared with the control group ( $P < 0.001$ ). Asterisks indicate significantly different compared with Pb group (\*\* $P < 0.01$ , \*\*\* $P < 0.001$ ).

**Abbreviations:** DCF, dichlorofluorescein; Glyc, glycine; ns, not significant; Pb, plasma lead.



**Figure 4** Renal histopathological alterations in the lead (Pb)-exposed mice.

**Notes:** Normal renal tissue architecture is shown in the control group (**A**). Kidney tissue histopathological changes were revealed as inflammation (green arrow), protein cast (blue arrow), vacuolization (yellow arrow), and tubular dilation (red arrow) in Pb-exposed mice (**B–D**). It was found that glycine supplementation (500 and 1,000 mg/kg, **E** and **F**, respectively) blunted Pb-induced histopathological alterations in renal tissue.

**Abbreviation:** Pb, plasma lead.



**Table 1** Grades of renal histopathological changes in the lead (Pb)-treated animals

Treatments	Tubular dilation	Protein cast	Vacuolization	Inflammation
Control	–	–	–	–
Pb (20 mg/kg/day)	++	++	++	+++
Pb (20 mg/kg/day) + glycine 500 mg/kg	++	+	+	++
Pb (20 mg/kg/day) + glycine 1,000 mg/kg	+	+	+	+

**Note:** +, mild; ++, moderate; and +++, severe histopathological changes.

**Abbreviation:** Pb, plasma lead.

capacity. On the contrary, glycine supplementation (500 or 1,000 mg/kg, IP) damped off OS consequences in the kidney caused by lead exposure. These findings could indicate that the antioxidative activities of glycine might be important to its nephroprotective mechanisms.

Glycine is an amino acid with a simple structure, incorporated in protein structure. Glycine has different physiological and pharmacological features, and its anti-inflammatory, antioxidant, and osmoregulatory activities are reported in various experimental models.<sup>42,43</sup> The impact of glycine on OS and its consequences are considered as its main cytoprotective activity.<sup>15,19</sup> This amino acid is also a component of the GSH as a vital cellular antioxidant defense system. In the current investigation, higher levels of GSH were detected in the glycine-treated groups (Figure 3), which might be an indication for higher rate of GSH synthesis in glycine-treated animals. We found that glycine treatment significantly reduced Pb-induced OS in the kidney tissue. On the contrary, no significant increase in plasma Pb level was detected after glycine treatment (Figure 1). This might indicate that glycine is able to chelate Pb or enhance its excretion from the body (Figure 1).

Several studies showed the positive effects of glycine on mitochondria.<sup>14,17,20</sup> One study showed that glycine treatment enhanced mitochondrial ATP content and prevented mitochondrial permeabilization and swelling.<sup>14</sup> Glycine treatment also modulates mitochondria-mediated cell death and apoptosis.<sup>17,44</sup> Mitochondria is an important source of ROS.<sup>45</sup> Hence, a possible mechanism for the antioxidative properties of glycine might be mediated through affecting mitochondria-facilitated ROS formation. The precise effect of glycine on cellular mitochondria and its role in renal dysfunction caused by Pb exposure need further studies in order to be understood clearly.

Other organs rather than kidney might also be affected by Pb (eg, reproductive system and the liver). Therefore, evaluating the mechanism of Pb toxicity and the protective effects of chemicals such as glycine in these organs warranted further investigations.

Glycine is an endogenous and safe chemical. Hence, this amino acid might be clinically applicable against a variety of complications such as Pb-induced renal injury. To understand

the findings of the current study in clinical setting, further studies are warranted.

## Conclusion

Based on the results, glycine therapy could significantly reduce renal injury in mice exposed to Pb and the probable mechanism is the alleviation of OS.

## Abbreviations

BALB, Bagg Albino; BUN, blood urea nitrogen; FRAP, ferric reducing antioxidant power; GSH, glutathione; IP, intraperitoneal; OS, oxidative stress; TBA, thiobarbituric acid assay.

## Acknowledgments

Authors acknowledge their gratitude to the Pharmaceutical Sciences Research Center (no. 17657) of Shiraz University of Medical Sciences for technical support. The authors also wish to thank Mr H Argasi at the Research Consultation Center of Shiraz University of Medical Sciences for his invaluable assistance in editing this manuscript.

## Author contributions

MS, RH, MMO, AAS, and NA conceived and planned the experiments. RH, MMO, and AAS performed the measurements. MS, NA, and RH contributed to sample preparation and interpretation of the results. All authors contributed toward data analysis, drafting and revising the paper, gave final approval of the version to be published and agree to be accountable for all aspects of the work.

## Disclosure

The authors report no conflicts of interest in this work.

## References

- Crinnion WJ. The CDC fourth national report on human exposure to environmental chemicals: what it tells us about our toxic burden and how it assist environmental medicine physicians. *Altern Med Rev.* 2010;15(2):101–109.
- Mason LH, Harp JP, Han DY. Pb neurotoxicity: neuropsychological effects of lead toxicity. *Biomed Res Int.* 2014;2014(10):1–8.
- Navas-Acien A, Guallar E, Silbergeld EK, Rothenberg SJ. Lead exposure and cardiovascular disease--a systematic review. *Environ Health Perspect.* 2007;115(3):472–482.

4. Rastogi SK. Renal effects of environmental and occupational lead exposure. *Indian J Occup Environ Med.* 2008;12(3):103.
5. Jia Q, Ha X, Yang Z, Hui L, Yang X. Oxidative stress: a possible mechanism for lead-induced apoptosis and nephrotoxicity. *Toxicol Mech Methods.* 2012;22(9):705–710.
6. Bernard BP, Becker CE. Environmental lead exposure and the kidney. *J Toxicol Clin Toxicol.* 1988;26(1–2):1–34.
7. Ekong EB, Jaar BG, Weaver VM. Lead-related nephrotoxicity: a review of the epidemiologic evidence. *Kidney Int.* 2006;70(12):2074–2084.
8. Song XB, Liu G, Liu F, et al. Autophagy blockade and lysosomal membrane permeabilization contribute to lead-induced nephrotoxicity in primary rat proximal tubular cells. *Cell Death Dis.* 2017;8(6):e2863.
9. Bertke SJ, Lehman EJ, Wurzelbacher SJ, Hein MJ. Mortality of lead smelter workers: a follow-up study with exposure assessment. *Am J Ind Med.* 2016;59(11):979–986.
10. Inglis JA, Henderson DA, Emmerson BT. The pathology and pathogenesis of chronic lead nephropathy occurring in Queensland. *J Pathol.* 1978;124(2):65–76.
11. Goyer RA. Mechanisms of lead and cadmium nephrotoxicity. *Toxicol Lett.* 1989;46(1–3):153–162.
12. Sudjarwo SA, Eraiko K, Sudjarwo GW, Koerniasari. Protective effects of piperine on lead acetate induced-nephrotoxicity in rats. *Iran J Basic Med Sci.* 2017;20(11):1227.
13. Wang L, Wang H, Hu M, Cao J, Chen D, Liu Z. Oxidative stress and apoptotic changes in primary cultures of rat proximal tubular cells exposed to lead. *Arch Toxicol.* 2009;83(5):417–427.
14. Heidari R, Ghanbarinejad V, Mohammadi H, et al. Mitochondria protection as a mechanism underlying the hepatoprotective effects of glycine in cholestatic mice. *Biomed Pharmacother.* 2018;97:1086–1095.
15. Heidari R, Jamshidzadeh AA, Niknahad H. The hepatoprotection provided by taurine and glycine against antineoplastic drugs induced liver injury in an ex vivo model of normothermic recirculating isolated perfused rat liver. *Trends Pharm Sci.* 2016;2(1):59–76.
16. Heidari R, Mohammadi H, Ahmadi AA, et al. Protective effect of glycine and tri-methyl glycine (betaine) against heavy metals-induced oxidative stress in liver-derived post-nuclear supernatant (PNS). *Trends Pharm Sci.* 2018;4(2):113–124.
17. Pal PB, Pal S, Das J, Sil PC. Modulation of mercury-induced mitochondria-dependent apoptosis by glycine in hepatocytes. *Amino Acids.* 2012;42(5):1669–1683.
18. Yin M, Zhong Z, Connor HD, et al. Protective effect of glycine on renal injury induced by ischemia-reperfusion in vivo. *Am J Physiol Renal Physiol.* 2002;282(3):F417–F423.
19. Senthilkumar R, Viswanathan P, Nalini N. Effect of glycine on oxidative stress in rats with alcohol induced liver injury. *Pharmazie.* 2004;59(1):55–60.
20. Sheth H, Hafez T, Glantzounis GK, Seifalian AM, Fuller B, Davidson BR. Glycine maintains mitochondrial activity and bile composition following warm liver ischemia-reperfusion injury. *J Gastroenterol Hepatol.* 2011;26(1):194–200.
21. Moneim AEA, Dkhil MA, Sjjohm A-Q. The protective effect of flaxseed oil on lead acetate-induced renal toxicity in rats. *J Hazard Mater.* 2011;194:250–255.
22. Heidari R, Jafari F, Khodaei F, Shirazi Yeganeh B, Niknahad H. Mechanism of valproic acid-induced Fanconi syndrome involves mitochondrial dysfunction and oxidative stress in rat kidney. *Nephrology.* 2018;23(4):351–361.
23. Heidari R, Jamshidzadeh A, Ghanbarinejad V, Ommati MM, Niknahad H. Taurine supplementation abates cirrhosis-associated locomotor dysfunction. *Clin Exp Hepatol.* 2018;4(2):72–82.
24. Heidari R, Ghanbarinejad V, Ommati MM, Jamshidzadeh AA, Niknahad H. Regulation of mitochondrial function and energy metabolism: a primary mechanism of cytoprotection provided by carnosine. *Trends Pharm Sci.* 2018;4(1):41–50.
25. Heidari R, Taheri V, Rahimi HR, Shirazi Yeganeh B, Niknahad H, Najibi A. Sulfasalazine-induced renal injury in rats and the protective role of thiol-reductants. *Ren Fail.* 2016;38(1):137–141.
26. Heidari R, Niknahad H, Sadeghi A, et al. Betaine treatment protects liver through regulating mitochondrial function and counteracting oxidative stress in acute and chronic animal models of hepatic injury. *Biomed Pharmacother.* 2018;103:75–86.
27. Heidari R, Ghanbarinejad V, Mohammadi H, et al. Dithiothreitol supplementation mitigates hepatic and renal injury in bile duct ligated mice: potential application in the treatment of cholestasis-associated complications. *Biomed Pharmacother.* 2018;99:1022–1032.
28. Heidari R, Babaei H, Roshangar L, Eghbal MA. Effects of enzyme induction and/or glutathione depletion on methimazole-induced hepatotoxicity in mice and the protective role of N-acetylcysteine. *Adv Pharm Bull.* 2014;4(1):21.
29. Katalinic V, Modun D, Music I, Boban M. Gender differences in antioxidant capacity of rat tissues determined by 2, 2'-azinobis (3-ethylbenzothiazoline 6-sulfonate; ABTS) and ferric reducing antioxidant power (FRAP) assays. *Comp Biochem Physiol C Toxicol Pharmacol.* 2005;140(1):47–52.
30. Jamshidzadeh A, Heidari R, Abasvali M, et al. Taurine treatment preserves brain and liver mitochondrial function in a rat model of fulminant hepatic failure and hyperammonemia. *Biomed Pharmacother.* 2017;86:514–520.
31. Bradford MM. A rapid and sensitive method for the quantitation of microgram quantities of protein utilizing the principle of protein-dye binding. *Anal Biochem.* 1976;72(1–2):248–254.
32. Sedlak J, Lindsay RH. Estimation of total, protein-bound, and nonprotein sulfhydryl groups in tissue with Ellman's reagent. *Anal Biochem.* 1968;25(1):192–205.
33. Duruibe JO, Ogwuegbu MOC, Ekwurugwu JN. Heavy metal pollution and human biotoxic effects. *Int J Phys Sci.* 2007;2(5):112–118.
34. Flora G, Gupta D, Tiwari A. Toxicity of lead: a review with recent updates. *Interdiscip Toxicol.* 2012;5(2):47–58.
35. Ommati MM, Jamshidzadeh AA, Heidari R. Carnosine and histidine supplementation blunt lead-induced reproductive toxicity through antioxidative and mitochondria-dependent mechanisms. *Biol Trace Elem Res.* 187(1):151–162.
36. Telisman S, Colak B, Pizent A, Jurasović J, Cvitković P. Reproductive toxicity of low-level lead exposure in men. *Environ Res.* 2007;105(2):256–266.
37. Rastogi SK. Renal effects of environmental and occupational lead exposure. *Indian J Occup Environ Med.* 2008;12(3):103–106.
38. Sommar JN, Svensson MK, Björ BM, et al. End-stage renal disease and low level exposure to lead, cadmium and mercury; a population-based, prospective nested case-referent study in Sweden. *Environ Health.* 2013;12(1):9.
39. Patrick L. Lead toxicity. Part II: the role of free radical damage and the use of antioxidants in the pathology and treatment of lead toxicity. *Altern Med Rev.* 2006;11(2):114.
40. Liu CM, Ma JQ, Sun YZ. Quercetin protects the rat kidney against oxidative stress-mediated DNA damage and apoptosis induced by lead. *Environ Toxicol Pharmacol.* 2010;30(3):264–271.
41. Matović V, Buha A, Đukić-Čosić D, Bulat Z. Insight into the oxidative stress induced by lead and/or cadmium in blood, liver and kidneys. *Food Chem Toxicol.* 2015;78:130–140.
42. Díaz-Flores M, Cruz M, Duran-Reyes G, et al. Oral supplementation with glycine reduces oxidative stress in patients with metabolic syndrome, improving their systolic blood pressure. *Can J Physiol Pharmacol.* 2013;91(10):855–860.
43. Zhong Z, Wheeler MD, Li X, et al. L-glycine: a novel antiinflammatory, immunomodulatory, and cytoprotective agent. *Curr Opin Clin Nutr Metab Care.* 2003;6(2):229–240.
44. Jacob T, Ascher E, Hingorani A, Kallakuri S. Glycine prevents the induction of apoptosis attributed to mesenteric ischemia/reperfusion injury in a rat model. *Surgery.* 2003;134(3):457–466.
45. Brookes PS, Yoon Y, Robotham JL, Anders MW, Sheu S-S. Calcium, ATP, and ROS: a mitochondrial love-hate triangle. *Am J Physiol Cell Physiol.* 2004;287(4):C817–C833.

### Journal of Experimental Pharmacology

Dovepress

#### Publish your work in this journal

The Journal of Experimental Pharmacology is an international, peer-reviewed, open access journal publishing original research, reports, reviews and commentaries on all areas of laboratory and experimental pharmacology. The manuscript management system is completely online and includes a very quick and fair peer-review system.

Visit <http://www.dovepress.com/testimonials.php> to read real quotes from published authors.

Submit your manuscript here: <https://www.dovepress.com/journal-of-experimental-pharmacology-journal>