

SCIENTIFIC REPORTS

OPEN

Detection of *Mycobacterium leprae* DNA in soil: multiple needles in the haystack

Maria Tió-Coma¹, Thomas Wijnands¹, Louise Pierneef¹, Anna Katarina Schilling², Korshed Alam³, Johan Chandra Roy³, William R. Faber⁴, Henk Menke⁵, Toine Pieters⁵, Karen Stevenson⁶, Jan Hendrik Richardus⁷ & Annemieke Geluk¹

Leprosy is an infectious disease caused by *Mycobacterium leprae* affecting the skin and nerves. Despite decades of availability of adequate treatment, transmission is unabated and transmission routes are not completely understood. Despite the general assumption that untreated *M. leprae* infected humans represent the major source of transmission, scarce reports indicate that environmental sources could also play a role as a reservoir. We investigated whether *M. leprae* DNA is present in soil of regions where leprosy is endemic or areas with possible animal reservoirs (armadillos and red squirrels). Soil samples (n = 73) were collected in Bangladesh, Suriname and the British Isles. Presence of *M. leprae* DNA was determined by RLEP PCR and genotypes were further identified by Sanger sequencing. *M. leprae* DNA was identified in 16.0% of soil from houses of leprosy patients (Bangladesh), in 10.7% from armadillos' holes (Suriname) and in 5% from the habitat of lepromatous red squirrels (British Isles). Genotype 1 was found in Bangladesh whilst in Suriname the genotype was 1 or 2. *M. leprae* DNA can be detected in soil near human and animal sources, suggesting that environmental sources represent (temporary) reservoirs for *M. leprae*.

Leprosy is a debilitating infectious disease caused by *Mycobacterium leprae* and *Mycobacterium lepromatosis* that is still considered a major threat in developing countries by WHO, remaining persistently endemic in regions in Africa, South America and Asia. Every year more than 200,000 new patients are still diagnosed and this new case detection rate has been virtually stable over the last decade¹. These facts indicate that multidrug therapy (MDT), although effective to treat leprosy, is insufficient to prevent transmission².

Granting *M. leprae* transmission is not completely understood, risk factors for development of leprosy have been identified including close contact with untreated, multibacillary patients³, human susceptibility genes^{4,5}, infection with soil transmitted helminths⁶, as well as food shortage⁷.

The mechanism by which bacteria are transmitted from one organism to another has not been unequivocally demonstrated⁸. However, based on existing evidence, skin-to-skin contact, aerosols as well as shedding of bacteria into the environment subsequently followed by infection of other individuals remain the most obvious options for human leprosy^{8,9}. Still these routes provide no explanation for the occurrence of leprosy in individuals without known contact to leprosy patients or in areas without any reported new cases^{9,10}.

Through PCR amplification of *M. leprae* DNA, its presence has been detected in environmental samples such as soil^{11–16} and water^{17,18} in areas inhabited by leprosy patients in Brazil and India. The viability of *M. leprae* was assessed by its multiplication in footpads of wild type mice and showed that *M. leprae* can remain alive in wet soil for 46 days¹⁹. Moreover, viability of *M. leprae* bacilli in soil from India has been studied by 16S ribosomal RNA gene analysis²⁰. This study showed that 25% of the soil samples collected from patients' areas contained *M. leprae* 16S ribosomal RNA, suggesting the presence of viable *M. leprae* in the soil. Additionally, if environment-free

¹Department of Infectious Diseases, Leiden University Medical Center, Leiden, The Netherlands. ²Royal (Dick) School of Veterinary Studies and Roslin Institute, University of Edinburgh, Roslin, Scotland, United Kingdom. ³Rural Health Program, The Leprosy Mission International Bangladesh, Nilphamari, Bangladesh. ⁴Department of Dermatology, Amsterdam UMC, University of, Amsterdam, The Netherlands. ⁵Division Pharmacoepidemiology and Clinical Pharmacology, Utrecht Institute for Pharmaceutical Sciences, Utrecht, The Netherlands. ⁶Moredun Research Institute, Pentlands Science Park, Edinburgh, Scotland, United Kingdom. ⁷Department of Public Health, Erasmus MC, University Medical Center Rotterdam, Rotterdam, The Netherlands. Correspondence and requests for materials should be addressed to A.G. (email: a.geluk@lumc.nl)

living amoebic cysts cultured in the laboratory are artificially infected with *M. leprae* (bacilli:amoebae ratio of 5–10:1), the bacteria can survive up to 8 months²¹.

Recently, *M. leprae* and *M. lepromatosis* were identified in red squirrels from the British Isles causing lepromatous disease in several animals^{22,23}. Phylogenetic analyses determined that the *M. leprae* strain in squirrels (3I) was related to the lineage circulating in Medieval England, suggesting the red squirrels as a contemporary reservoir of the bacilli.

Zoonotic transmission of *M. leprae* from armadillos has been detected in the southeastern United States where wild armadillos and patients were infected with the same genotype (3I-2-v1)²⁴.

Furthermore, although the prevalence of leprosy in nonhuman primates (NHP) seems to be quite low, *M. leprae* infections have also been reported in NHP²⁵ carrying *M. leprae* strains closely related to the human strains, suggesting that NHPs transmission can occur from human (or human sources like trash), but also among NHPs²⁵.

In this study, we aimed to explore whether besides humans and animals, environmental sources may function as a reservoir of *M. leprae*. For this purpose, we investigated the presence of *M. leprae* DNA in soil from regions with varying human leprosy endemicity in Bangladesh, Suriname, Brownsea Island and the Isle of Arran²².

Materials and Methods

DNA extraction from soil. Moist soil samples from 3 regions (Supplementary Table 1) were collected at a depth of 2 cm (Bangladesh and Suriname) or 8 cm (British Isles) in areas without sun light and stored in 50 ml tubes (Greiner Bio-One, Kremsmünster, Austria): i) in Bangladesh in front of the bedroom (right on the doorstep) in the houses of leprosy patients (n = 25) and from areas without known leprosy patients (n = 2); ii) in Suriname (Batavia and Groot Chatillon (former leprosy colonies), Pikin Slee and Gujaba) from areas known to be inhabited by nine-banded armadillos (n = 28) (samples Suriname 2, 3 and 6 from Batavia and Groot Chatillon were previously described (van Dissel *et al.* submitted) and are presented here for reference purposes); iii) in the British Isles in the habitat of Eurasian red squirrels carrying *M. leprae* (Brownsea Island, n = 10) and *M. lepromatosis* (Isle of Arran, n = 10).

As a negative control soil was obtained from the surroundings of the Leiden University Medical Centre (The Netherlands) and spiked with 10⁸ cells of *M. leprae* NHPD-63 as positive control.

DNA was extracted from 10 g of soil using DNeasy PowerMax Soil (Qiagen, Valencia, CA) as per manufacturer's instructions.

PCR amplification of RLEP and LPM244. To detect the presence of *M. leprae* DNA in soil, a PCR amplifying an *M. leprae*-specific repetitive sequence (RLEP) was performed. PCR amplification of a 129 bp sequence of RLEP²⁶ was carried by addition of 10 µl 5x Gotaq[®] Flexi buffer (Promega, Madison, WI), 5 µl MgCl₂ (25 mM), 2 µl dNTP mix (5 mM), 0.25 µl Gotaq[®] G2 Flexi DNA Polymerase (5 u/µl), 5 µl (2 µM) forward and reverse primers (Supplementary Table 2) and 5 µl template DNA in a final volume of 50 µl. DNA from *M. bovis* BCG P3 and *M. tuberculosis* H37Rv were used to assess PCR-specificity. As PCR positive controls DNA from *M. leprae* Br4923 and Thai-53 were used.

To detect inhibition of PCR due to remaining soil components, 1 µl of *M. leprae* DNA was added to the aforementioned PCR mixes together with 5 µl template DNA. In samples presenting PCR inhibition, 5 µl (2 mM) Bovine Serum Albumin (BSA) Fraction V (Roche Diagnostics, Indianapolis, IN) were added to the PCR mixes.

PCR mixes were denatured for 2 min at 95 °C followed by 40 cycles of 30 s at 95 °C, 30 s at 65 °C and 30 s at 72 °C and a final extension of 10 min at 72 °C. PCR products (15 µl) were used for electrophoresis in a 3.5% agarose gel at 130 V. Amplified DNA was visualized by Midori Green Advance staining (Nippon Genetics Europe, Dueren, Germany) using a Gel Doc System (Bio-Rad Laboratories, Hercules, CA).

PCR to detect *M. lepromatosis* was performed for soil from the British Isles. The primers (LPM244) amplify a 244 bp region of the *hemN* gene not present in *M. leprae* or other mycobacteria²⁷. PCR was performed as explained above with LMP244 primers (Supplementary Table 2) and an annealing temperature of 53 °C. *M. lepromatosis* DNA was used as a positive control.

Genotyping. To determine the genotype (1, 2, 3 or 4) of *M. leprae*, SNP-14676 (locus 1), SNP-1642875 (locus 2) and SNP-2935685 (locus 3) were amplified and sequenced as described²⁸ with minor modifications: PCRs were performed with 5 µl of template DNA using the aforementioned PCR mixes and forward and reverse primers for loci 1–3 (Supplementary Table 2) in a final volume of 50 µl. DNA was denatured for 2 minutes at 95 °C, following 45 cycles of 30 s at 95 °C, 30 s at 58 °C and 30 s at 72 °C and a final extension cycle of 10 min at 72 °C. PCR products were resolved by agarose gel electrophoresis as explained above. PCR products showing a band were purified prior to sequencing using the Wizard SV Gel and PCR Clean-Up System (Promega, Madison, WI). Sequencing was performed on the ABI3730xl system (Applied Biosystems, Foster City, CA) using the BigDye Terminator Cycle Sequencing Kit (Thermo Fisher Scientific, Waltham, MA).

Results

Detection of *M. leprae* DNA in soil. To determine whether *M. leprae* DNA is present in the environment surrounding leprosy patients, the habitat of armadillos and red squirrels with leprosy-like disease, soil was collected in each area. PCR amplification of a 129 bp sequence of the RLEP region from *M. leprae* was performed in a total of 75 soil samples from 3 different regions (Supplementary Table 1). Control soil samples did not show amplification of the fragment in RLEP PCR, whereas the same sample spiked with *M. leprae* bacilli presented a clear band confirming the applicability of the method to isolate, purify and detect *M. leprae* in soil. PCR amplification of 5 µl of *M. bovis* BCG P3 and *M. tuberculosis* H37Rv DNA did not show amplification of RLEP showing specificity of the PCR for *M. leprae* DNA.

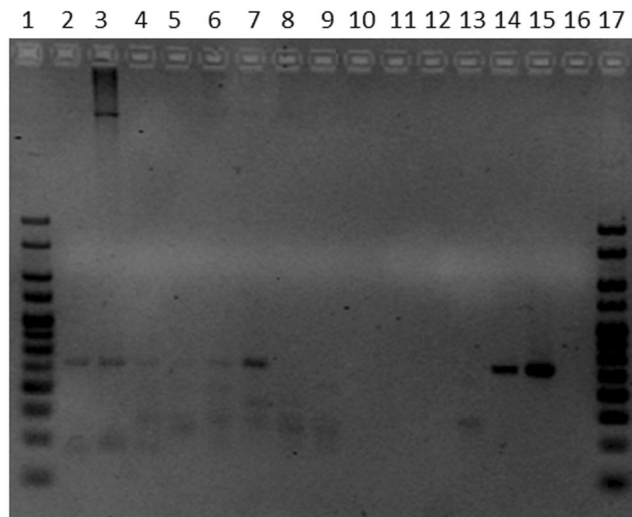


Figure 1. Gel of PCR for RLEP region to detect presence of *M. leprae* in soil samples. PCR products were electrophoresed in a 3.5% agarose gel. The size of the amplified RLEP sequence is 129 bp. Lanes 2 to 4 represent soil samples collected in Suriname (Suriname 2, 3, and 6), lanes 5 to 14 are soil samples collected in Bangladesh (01/65959/00, 01/65922/00, 01/65958/00, 02/65971/00, 02/22705/00, 01/65945/00, 01/65942/00, 01/65975/00, 01/22711/00 and 01/22723/00), lane 15 is DNA of *M. leprae* Thai-53 strain, lane 16 is a negative PCR control and lanes 1 and 17 are 25 bp HyperLadder (Bioline, Taunton, MA).

Origin	Positive		Negative	
	Number	%	Number	%
Bangladesh	4	16.0	21	84.0
Suriname	3	10.7	25	89.3
Brownsea Island	1	10.0	9	90.0
Isle of Arran	0	0.0	10	100.0

Table 1. RLEP PCR results for *M. leprae* DNA derived from soil samples. RLEP PCR result to detect *M. leprae* DNA in soil samples from Bangladesh, Suriname, Brownsea Island and Isle of Arran. A positive result is determined by a visible band of 129 bp in an agarose gel.

In Bangladesh, 4 out of 25 collected samples were positive for RLEP PCR (Fig. 1, Table 1; Supplementary Table 3), all of which were collected in houses of leprosy patients with high bacillary load (BI 5–6, Fig. 2). *M. leprae* DNA was not detected in the two soil samples from areas in Bangladesh without any reported leprosy cases (Supplementary Fig. 1).

In Suriname, samples ($n = 28$) were taken in three different locations inhabited by armadillos and *M. leprae* DNA was detected in 3 samples obtained at former leprosy colonies in Batavia and Groot-Chatillon (Fig. 1, Table 1; Supplementary Table 4).

Since all PCRs performed with UK samples were negative, we investigated whether PCRs were inhibited by compounds in the soil. DNA of *M. leprae* was added to the PCR mixes containing the DNA isolated from all soil samples and inhibition of PCR was determined by a negative PCR result. Inhibition was observed in 7 of the 10 soil samples from Brownsea Island, 8 out of the 10 from the Isle of Arran and 1 out of the 28 from Suriname. Since humic acid in soil can act as a PCR inhibitor^{29,30}, 5 μ l of 2 mM BSA was added to the PCRs with soil samples from the British Isles to overcome inhibition. Indeed, addition of BSA to soil-DNA spiked with *M. leprae* DNA (Br4923 or Thai-53), resulted in PCR-positivity for all spiked samples, indicating that BSA can prevent PCR inhibition due to undetermined soil compounds (data not shown).

Ten soil samples were collected in the surroundings of the infected red squirrels one of which was RLEP PCR positive (Tables 1 and 2). To determine whether *M. lepromatosis* DNA was also present in soil from the Isle of Arran with reported *M. lepromatosis* infection in red squirrels, PCRs were performed amplifying a 244 bp region of the *hemN* gene unique of *M. lepromatosis*²⁷. None of the 10 soil samples collected resulted in PCR-positivity using LPM244 primers.

Next, for all RLEP PCR positive samples from Bangladesh ($n = 4$), Suriname ($n = 3$) and the British Isles ($n = 1$) the PCR-amplified 129 bp RLEP region was sequenced. Sequence alignment with the RLEP region of *M. leprae* was found for all 8 samples, confirming that *M. leprae* specific DNA can be identified in soil using the above described procedure.

Genotyping. Genotypes of the RLEP PCR positive soil samples ($n = 8$) were investigated and determined according to the combination of SNPs in loci 1–3 as described by Monot *et al.*²⁸ RLEP-positive soil

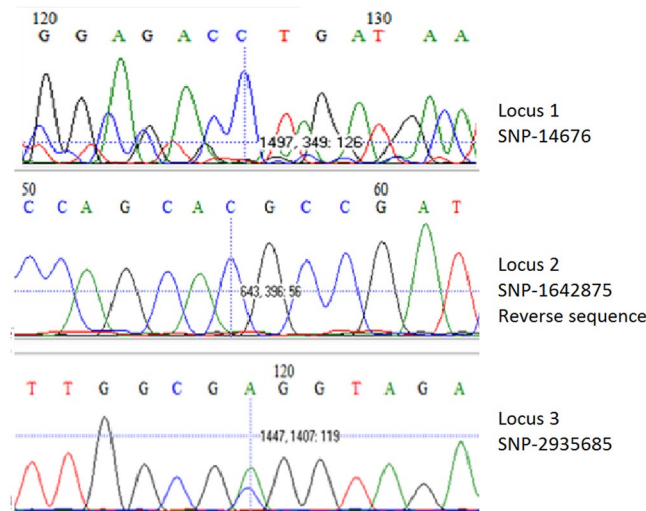


Figure 3. SNP analysis of loci 1, 2 and 3 from a representative *M. leprae* positive soil sample collected in Bangladesh. Sequencing results of locus 1 (SNP-146763) top, reverse sequence of locus 2 (SNP-1642875) middle and locus 3 (SNP-2935685) bottom, from soil sample Bangladesh 01/22723/00 used to determine the genotype of the *M. leprae* strain identified (genotype 1). SNP positions are based on the *M. leprae* TN strain. Vertical bars indicate the polymorphic base.

In this study, *M. leprae* DNA was identified in soil collected in the houses of leprosy patients and the habitats of armadillos and red squirrels, suggesting that soil may represent a (temporary) reservoir. However, this study did not assess viability of the bacteria and since *M. leprae* is an obligate intracellular pathogen further investigation is needed to elucidate the role of the environment in *M. leprae* transmission.

Understanding how *M. leprae* is transmitted, and identifying sources of infection is crucial to prevent new cases and thus blocking transmission is essential to ultimately eradicate leprosy.

Although human leprosy was eradicated from the British Isles centuries ago, Eurasian red squirrels have remained a reservoir for *M. leprae*, containing a strain closely related to the strain present in Medieval England (31). This indicates that *M. leprae* may have persisted in the environment after the human reservoir disappeared. However, *M. leprae* DNA was not abundantly present in soil, suggesting that the risk of environmental contamination is low.

Because the genome of *M. lepromatosis* contains only one copy of the *hemN* gene³² detected by LPM244 whereas 37 copies³³ are present in the RLEP region³⁴ of *M. leprae*, an equal amount of bacteria would be less well detectable by LPM244 PCR for *M. lepromatosis* than by RLEP PCR for *M. leprae*. Added to the fact that *M. lepromatosis* prevalence in the squirrel population is low, it is therefore possible that sensitivity was not sufficient to detect *M. lepromatosis*.

In Bangladesh, *M. leprae* was only found in soil collected in the houses of patients with high BI index (Fig. 2). At those locations more bacteria are shed and thus the likelihood of encountering bacteria in the soil is higher. However, a high BI index of the patient where the soil sample was collected was not necessarily associated with a positive RLEP PCR result. The higher percentage of RLEP positive soil in Bangladesh is likely due to a more targeted selection of the sample location in the houses of leprosy patients as well as the higher leprosy prevalence.

In previous phylogeographic analysis genotype 1 was identified as the predominant strain type in South Asia^{35,36} and was likely introduced to South Asia from other parts of that continent³⁶. The genotype found in soil samples from Bangladesh (1) is therefore in accordance with previous phylogeographic data³⁵.

In summary, this study demonstrates the presence of *M. leprae* DNA in soil, contributing to a OneHealth view on transmission including humans, animals and the environment. Further research is needed, however, to confirm whether *M. leprae* DNA in soil is derived from viable bacteria that can survive in smaller hosts such as helminths or amoebas. Thus, strategies aimed at prevention of transmission by administration of post-exposure prophylaxis to infected individuals should, besides human reservoirs of *M. leprae*, also consider environmental sources of (re)infection.

References

1. World Health Organization. Global leprosy update, 2016: accelerating reduction of disease burden. 92: WHO; pp. 501–520 (2017).
2. Blok, D. J., de Vlas, S. J., Geluk, A. & Richardus, J. H. Minimum requirements and optimal testing strategies of a diagnostic test for leprosy as a tool towards zero transmission: A modeling study. *PLOS Neglected Tropical Diseases* **12**, e0006529 (2018).
3. Moet, F. J., Meima, A., Oskam, L. & Richardus, J. H. Risk factors for the development of clinical leprosy among contacts, and their relevance for targeted interventions. *Leprosy review* **75**, 310–326 (2004).
4. Liu, H. *et al.* Discovery of six new susceptibility loci and analysis of pleiotropic effects in leprosy. *Nature genetics* **47**, 267–271 (2015).
5. Alter, A., Grant, A., Abel, L., Alcais, A. & Schurr, E. Leprosy as a genetic disease. *Mammalian genome: official journal of the International Mammalian Genome Society* **22**, 19–31 (2011).
6. Hagge, D. A. *et al.* Opening a Can of Worms: Leprosy Reactions and Complicit Soil-Transmitted Helminths. *EBio Medicine* **23**, 119–124 (2017).

7. Feenstra, S. G., Nahar, Q., Pahan, D., Oskam, L. & Richardus, J. H. Recent food shortage is associated with leprosy disease in Bangladesh: a case-control study. *PLOS Neglected Tropical Diseases* **5**, e1029 (2011).
8. Bratschi, M. W., Steinmann, P., Wickenden, A. & Gillis, T. P. Current knowledge on *Mycobacterium leprae* transmission: a systematic literature review. *Leprosy review* **86**, 142–155 (2015).
9. Araujo, S., Freitas, L. O., Goulart, L. R. & Goulart, I. M. Molecular evidence for the aerial route of infection of *Mycobacterium leprae* and the role of asymptomatic carriers in the persistence of leprosy. *Clinical infectious diseases: an official publication of the Infectious Diseases Society of America* **63**, 1412–1420 (2016).
10. Bonnar, P. E. *et al.* Leprosy in Nonimmigrant Canadian Man without Travel outside North America, 2014. *Emerg Infect Dis* **24**, 165–166 (2018).
11. Lavania, M. *et al.* Detection of *Mycobacterium leprae* DNA from soil samples by PCR targeting RLEP sequences. *The Journal of communicable diseases* **38**, 269–273 (2006).
12. Turankar, R. P. *et al.* Single nucleotide polymorphism-based molecular typing of *M. leprae* from multicase families of leprosy patients and their surroundings to understand the transmission of leprosy. *Clinical microbiology and infection: the official publication of the European Society of Clinical Microbiology and Infectious Diseases* **20**, O142–149 (2014).
13. Turankar, R. P., Lavania, M., Singh, M., Siva Sai, K. S. & Jadhav, R. S. Dynamics of *Mycobacterium leprae* transmission in environmental context: deciphering the role of environment as a potential reservoir. *Infection, genetics and evolution: journal of molecular epidemiology and evolutionary genetics in infectious diseases* **12**, 121–126 (2012).
14. Turankar, R. P. *et al.* Presence of viable *Mycobacterium leprae* in environmental specimens around houses of leprosy patients. *Indian journal of medical microbiology* **34**, 315–321 (2016).
15. Turankar, R. P. *et al.* Comparative evaluation of PCR amplification of RLEP, 16S rRNA, rpoT and Sod A gene targets for detection of *M. leprae* DNA from clinical and environmental samples. *International journal of mycobacteriology* **4**, 54–59 (2015).
16. Lavania, M. *et al.* Detection of viable *Mycobacterium leprae* in soil samples: insights into possible sources of transmission of leprosy. *Infection, genetics and evolution: journal of molecular epidemiology and evolutionary genetics in infectious diseases* **8**, 627–631 (2008).
17. Holanda, M. V. *et al.* Presence of *Mycobacterium leprae* genotype 4 in environmental waters in Northeast Brazil. *Revista da Sociedade Brasileira de Medicina Tropical* **50**, 216–222 (2017).
18. Arraes, M. *et al.* Natural environmental water sources in endemic regions of northeastern Brazil are potential reservoirs of viable *Mycobacterium leprae*. *Memorias do Instituto Oswaldo Cruz* **112**, 805–811 (2017).
19. Desikan, K. V. & Sreevatsa. Extended studies on the viability of *Mycobacterium leprae* outside the human body. *Leprosy review* **66**, 287–295 (1995).
20. Mohanty, P. S. *et al.* Viability of *Mycobacterium leprae* in the environment and its role in leprosy dissemination. *Indian journal of dermatology, venereology and leprology* **82**, 23–27 (2016).
21. Wheat, W. H. *et al.* Long-term survival and virulence of *Mycobacterium leprae* in amoebal cysts. *PLoS Neglected Tropical Diseases* **8**, e3405 (2014).
22. Avanzi, C. *et al.* Red squirrels in the British Isles are infected with leprosy bacilli. *Science (New York, N.Y.)* **354**, 744–747 (2016).
23. Simpson, V. *et al.* Leprosy in red squirrels on the Isle of Wight and Brownsea Island. *The Veterinary record* **177**, 206–207 (2015).
24. Truman, R. W. *et al.* Probable zoonotic leprosy in the Southern United States. *The New England journal of medicine* **364**, 1626–1633 (2011).
25. Honap, T. P. *et al.* *Mycobacterium leprae* genomes from naturally infected nonhuman primates. *PLOS Neglected Tropical Diseases* **12**, e0006190 (2018).
26. Donoghue, H. D., Holton, J. & Spigelman, M. PCR primers that can detect low levels of *Mycobacterium leprae* DNA. *Journal of medical microbiology* **50**, 177–182 (2001).
27. Vera-Cabrera, L. *et al.* *Mycobacterium lepromatosis* infections in Nuevo León, Mexico. *Journal of clinical microbiology* **53**, 1945–1946 (2015).
28. Monot, M. *et al.* On the origin of leprosy. *Science (New York, N.Y.)* **308**, 1040–1042 (2005).
29. Tsai, Y. L. & Olson, B. H. Rapid method for separation of bacterial DNA from humic substances in sediments for polymerase chain reaction. *Applied and Environmental Microbiology* **58**, 2292–2295 (1992).
30. Watson, R. J. & Blackwell, B. Purification and characterization of a common soil component which inhibits the polymerase chain reaction. *Canadian journal of microbiology* **46**, 633–642 (2000).
31. da Silva, M. B. P. *et al.* Evidence of zoonotic leprosy in Pará, Brazilian Amazon, and increased anti-PGL-I titer in individuals who consume armadillos in their diet. *PLOS Neglected Tropical Diseases* **12**, e0006532 (2018).
32. Singh, P. *et al.* Insight into the evolution and origin of leprosy bacilli from the genome sequence of *Mycobacterium lepromatosis*. *Proceedings of the National Academy of Sciences of the United States of America* **112**, 4459–4464 (2015).
33. Cole, S. T., Supply, P. & Honoré, N. Repetitive sequences in *Mycobacterium leprae* and their impact on genome plasticity. *Leprosy review* **72**, 449–461 (2001).
34. Braet, S. *et al.* The repetitive element RLEP is a highly specific target for detection of *Mycobacterium leprae*. *Journal of clinical microbiology* **56** (2018).
35. Monot, M. *et al.* Comparative genomic and phylogeographic analysis of *Mycobacterium leprae*. *Nature genetics* **41**, 1282–1289 (2009).
36. Benjak, A. *et al.* Phylogenomics and antimicrobial resistance of the leprosy bacillus *Mycobacterium leprae*. *Nature communications* **9**, 352 (2018).

Acknowledgements

The authors gratefully acknowledge all patients and control participants. LUMC and TLMI-B are part of the IDEAL (Initiative for Diagnostic and Epidemiological Assays for Leprosy) Consortium. We thank Dr. L. Adams (Louisiana State University, LA) for providing *M. leprae* cells and stimulating discussions and Prof. Xiang-Yang Han (MD Anderson Cancer Center, TX, USA) for providing *M. lepromatosis* DNA. This study was supported by an R2STOP Research grant from Effect hope/ The Leprosy Mission Canada, The Order of Malta-Grants-for-Leprosy-Research (MALTALEP), the Q.M. Gastmann-Wichers Foundation, the Leprosy Research Initiative (LRI; ILEP#703.15.07) together with the Turing Foundation and the Principal's Career Development PhD scholarship provided by the University of Edinburgh.

Author Contributions

M.T.C. and A.G. wrote the manuscript, M.T.C., T.W. and L.P. performed the experiments, K.A., J.C.R., W.R.F., H.M., T.P. and K.S. provided the samples, M.T.C. A.G., A.K.S. and K.S. edited the manuscript, A.G. and J.H.R. funding acquisition.

Additional Information

Supplementary information accompanies this paper at <https://doi.org/10.1038/s41598-019-39746-6>.

Competing Interests: The authors declare no competing interests.

Publisher's note: Springer Nature remains neutral with regard to jurisdictional claims in published maps and institutional affiliations.



Open Access This article is licensed under a Creative Commons Attribution 4.0 International License, which permits use, sharing, adaptation, distribution and reproduction in any medium or format, as long as you give appropriate credit to the original author(s) and the source, provide a link to the Creative Commons license, and indicate if changes were made. The images or other third party material in this article are included in the article's Creative Commons license, unless indicated otherwise in a credit line to the material. If material is not included in the article's Creative Commons license and your intended use is not permitted by statutory regulation or exceeds the permitted use, you will need to obtain permission directly from the copyright holder. To view a copy of this license, visit <http://creativecommons.org/licenses/by/4.0/>.

© The Author(s) 2019