



# Development and Evaluation of an Immunoglobulin Y-Based ELISA for Measuring Prostate Specific Antigen in Human Serum

Agnieszka Łupicka-Słowik , Ph.D.<sup>1</sup>, Renata Grzywa , Ph.D.<sup>1</sup>, Ewa Leporowska , Ph.D.<sup>2</sup>, Danuta Procyk , Ph.D.<sup>2</sup>, Józef Oleksyszyn , Ph.D., D.Sc.<sup>1</sup>, and Marcin Sieńczyk , Ph.D., D.Sc.<sup>1</sup>

<sup>1</sup>Faculty of Chemistry, Division of Medicinal Chemistry and Microbiology, Wrocław University of Science and Technology, Wrocław, Poland; <sup>2</sup>Greater Poland Cancer Centre, Department of Laboratory Diagnostics, Poznań, Poland

**Background:** Measurement of serum prostate specific antigen (PSA) concentrations remains one of the leading methods for diagnosing prostate cancer. We developed and evaluated an immunoglobulin Y (IgY)-based ELISA to measure total PSA (tPSA) concentrations in human serum that could be used as an alternative to commercially available *in vitro* diagnostic assays that rely on mouse monoclonal IgG.

**Methods:** A sandwich ELISA based on an anti-PSA IgY antibody was developed. We evaluated the ability of the anti-PSA IgY antibody to detect free and complexed PSA at the same molar ratio. The assay was optimized, and its analytical performance was verified by calculating limit of background (LoB), limit of detection (LoD), and limit of quantification (LoQ). We performed correlation and regression analyses between tPSA concentrations measured by our ELISA and those from commercial assays: Cobas 6000 (Roche Diagnostics, Warszawa, Poland) and PSA total ELISA (IBL International, Hamburg, Germany).

**Results:** LoB, LoD, and LoQ, were 0.061, 0.083, and 0.100 ng/mL, respectively, and linearity range was 0.100–3.375 ng/mL. tPSA concentrations from our IgY-based ELISA strongly correlated with those from the commercial assays.

**Conclusions:** Our IgY-based ELISA is an efficient equivalent to the above commercial assays. The use of IgY as the detecting agent could reduce the risk of false positive results, as well as decrease the overall cost of analysis.

**Key Words:** Prostate specific antigen, *In vitro* diagnostics, Prostate cancer, Immunoglobulin Y, Sandwich ELISA, Performance

**Received:** September 12, 2018

**Revision received:** November 20, 2018

**Accepted:** February 5, 2019

**Corresponding author:**

Marcin Sieńczyk, Ph.D., D.Sc.

<https://orcid.org/0000-0002-5528-5264>

Faculty of Chemistry, Division of Medicinal Chemistry and Microbiology, Wrocław University of Science and Technology, Wybrzeże Wyspiańskiego 27, 50-370 Wrocław, Poland

Tel: +48-71-320-36-46

Fax: +48-71-320-24-27

E-mail: [marcin.sienczyk@pwr.edu.pl](mailto:marcin.sienczyk@pwr.edu.pl)

**© Korean Society for Laboratory Medicine**

This is an Open Access article distributed under the terms of the Creative Commons Attribution Non-Commercial License (<http://creativecommons.org/licenses/by-nc/4.0>) which permits unrestricted non-commercial use, distribution, and reproduction in any medium, provided the original work is properly cited.

## INTRODUCTION

Prostate cancer screening and early diagnosis is based on digital rectal examination and prostate specific antigen (PSA) serological testing [1]. If necessary, transrectal ultrasound-guided prostate biopsy is used; however, this is an invasive method that requires local anesthesia and antibiotic cover or multiparametric magnetic resonance imaging [2]. In either case, proper interpretation of the results, extensive experience, and close collabo-

ration with urologists is mandatory, which contributes to the overall difficulty of both diagnostic approaches [3].

In 1986, the U.S. Food and Drug Administration (FDA) approved the Hybritech Tandem PSA assay (Hybritech Inc., San Diego, CA, USA) to measure serum PSA concentrations [4]. Initially, the assay was introduced for monitoring the course of disease; however, eight years later, it was accepted for screening potential prostate cancer development with a cut-off value of 4 ng/mL of total PSA (tPSA) in serum [5]. However, the reference

cut-off value for prostate cancer screening remains the subject of continuous debate, and several attempts have been made to find a compromise between the specificity and sensitivity of the PSA assay, including setting age- and race-specific reference ranges [6].

PSA is a serine protease belonging to the kallikrein family. It is synthesized as preproPSA that is sequentially cleaved to form the proPSA zymogene and then the mature enzyme [7, 8]. Additionally, PSA can be hydrolyzed at alternative positions, leading to the formation of catalytically inactive nicked forms [7, 9, 10]. The diagnostic approach is further complicated by the fact that PSA is present in the serum not only as free PSA (fPSA), but also in complexes with serpins:  $\alpha$ -1-antichymotrypsin (PSA-ACT) or  $\alpha$ -2-macroglobulin (PSA- $\alpha$ 2M; a form that escapes immunological detection) [9, 10]. Nicked PSA does not form complexes with ACT and  $\alpha$ 2M and therefore participates in the fPSA fraction [7]. Assays used to measure tPSA need to detect not only the fPSA sub-fractions but also the PSA-ACT complexes, which constitute 70–90% of tPSA in human serum [11]. However, the concentration and ratio of various PSA sub-fractions provide valuable information on health status and are considered as a supplement to tPSA measurements [12–15]. Thus, although not ideal, PSA remains one of the most tested, validated, and commonly used prostate cancer biomarkers.

We propose the application of a recently developed PSA-specific chicken immunoglobulin Y (IgY) antibody as an alternative to currently used mammalian IgG antibodies [16]. The interaction between the F<sub>c</sub> region of IgG with rheumatoid factor (RF), the presence of human anti-mouse antibodies (HAMA) in serum, as well as the activation of the complement system might result in the interferences observed in immunoassays based on mammalian antibodies [17]. Since IgY antibodies do not participate in the above described interactions, their application leads to a reduction in these types of cross-reactions in serological assays [18–20].

The isolation method of IgY antibody from egg yolks is simple, efficient, and non-invasive. There are also significant economic and ethical aspects involved in the utilization of antigen-specific IgY antibodies as an alternative to IgG that need to be considered [21]. We describe the application of an anti-PSA IgY antibody in a sandwich ELISA and evaluate its diagnostic potential compared with the assay on Cobas 6000 analyzer (Roche Diagnostics, Warszawa, Poland) and PSA total ELISA (IBL International, Hamburg, Germany) used to measure serum PSA concentration.

## METHODS

### IgY antibodies

PSA-specific IgY antibodies were obtained by immunizing 22-week-old white leghorn laying hens with fPSA (Fitzgerald Industries International, Acton, MA, USA) as the antigen [16, 22]. Egg yolk antibody isolates were subjected to affinity chromatography purification with PSA conjugated to CNBr-sepharose (Thermo Fisher Scientific, Gdańsk, Poland), following the manufacturer's protocol. The next steps were performed as described previously [23]. All subsequent IgY-based experiments were performed with affinity purified anti-PSA IgY with confirmed antigen-reactivity to ensure reproducible results in all IgY-based experiments.

### Equimolar detection of fPSA and PSA-ACT

Equimolar detection of the commercially obtained fPSA and the PSA-ACT complex by specific anti-PSA IgY was determined by ELISA. For this purpose, a microtiter plate (Nunc MaxiSorp, Thermo Fisher Scientific) was coated with a mouse monoclonal anti-PSA IgG antibody (clone M1709PSA1; Fitzgerald Industries International) in carbonate buffer (pH 9.600) at 3.000  $\mu$ g/mL (100.000  $\mu$ L/well). After four hrs of incubation at 37°C, the plate was washed and blocked overnight with 5.000% skim milk in phosphate buffered saline (PBS) containing 0.050% of Tween-20 (PBST) at 4°C. After washing with PBST, the plate was incubated (1 hour, 37°C) with fPSA and the PSA-ACT complex (Fitzgerald Industries International) at tPSA protein concentrations of 2.500, 5.000, 10.000, and 20.000 ng/mL and with different fPSA:PSA-ACT ratios: 100:0, 75:25, 50:50, 25:75, and 0:100 for each tPSA protein concentration (100.000  $\mu$ L/well in PBS supplemented with 1.000% bovine serum albumin [BSA]). Next, the plate was washed, and 1.000  $\mu$ g/mL of the anti-PSA IgY antibody in 0.500% skim milk in PBST was applied (100.000  $\mu$ L/well, 1 hour, 37°C). After washing, an anti-IgY IgG-horseradish peroxidase (HRP) conjugate (1:5.000, in 0.500% skim milk in PBST; Pierce, Gdańsk, Poland) was used for detection (100.000  $\mu$ L/well, 1 hour, 37°C). Subsequently, the plate was washed, and the peroxidase substrate solution (*o*-phenylenediamine [OPD]; Pierce) in citrate buffer (pH 5.000) supplemented with 0.015% H<sub>2</sub>O<sub>2</sub> was added. The reaction was stopped with 1 M H<sub>2</sub>SO<sub>4</sub>, and the absorbance at 490 nm was measured with a microplate reader (Multiscan FC; Thermo Fisher Scientific). The results are expressed as optical density at 490 nm (OD<sub>490</sub>)  $\pm$  SD. All measurements were performed in duplicate.

### IgY-based ELISA

Sandwich ELISA was performed to measure tPSA concentration in 255 serum samples using 16 microtiter plates. A microtiter plate (MaxiSorp) was coated with a mouse monoclonal anti-PSA IgG antibody (2.500 µg/mL, 100.000 µL/well; clone M1709PSA1, Fitzgerald Industries International) in carbonate buffer (4 hours, 37°C). Subsequently, the plate was washed and blocked with 5.000% skim milk in PBST (overnight, 4°C). Standard curves, as well as the blank samples, were prepared based on commercially available calibrators (lyophilized serum containing 64.900 ng/mL and serum without PSA, Total PSA G2 CS Elecsys V2.1, Roche Diagnostics). The samples for the standard curve were used in a concentration range of 0.031–5.060 ng/mL. Serum samples, as well as the calibrator, were diluted in PBS supplemented with 0.100% BSA. Serum samples and calibrators were incubated in the plate for one hour at 37°C. The plate was washed with PBST and incubated with affinity purified anti-PSA IgY at a concentration of 2.500 µg/mL in 0.500% skim milk (1 hour, 37°C). Mouse monoclonal anti-PSA IgG and primary polyclonal anti-PSA IgY antibody coating concentrations were optimized in a separate ELISA assay (Supplemental Data Fig. S1). Next, the anti-IgY IgG-HRP conjugate was added (1:5,000, 100.000 µL/well; Fitzgerald Industries International) and incubated for one hour at 37°C. The plate was washed, and the signal was developed as described above. The reaction was stopped after 10 minutes with 1 M H<sub>2</sub>SO<sub>4</sub>, and the absorbance was measured with a microplate reader (490 nm).

### Sample collection and storage

Two hundred and fifty five randomly selected serum samples were obtained from patients 55–70 years old with prostate cancer from the Greater Poland Cancer Center, Poznań, Poland. The study was approved by the local ethics committee (Bioethical Commission at the Medical University of Poznań, Poland; UMP No10/2012). All patients provided informed consent for blood collection and data processing. The blood samples were collected, stored at room temperature (21–22°C) for 15–30 minutes, and centrifuged at 1,800×g in a serum separator tube. The serum samples were stored at -20°C for three months.

### Commercial assays

Serum tPSA was analyzed using the Cobas assay on the day of blood collection, according to the manufacturer's protocol. This assay is based on the principle of sandwich electrochemiluminescent assay with a biotinylated mouse monoclonal PSA-specific antibody and a mouse monoclonal PSA-specific antibody

labeled with ruthenium complex, which forms a sandwich complex with PSA. The method was standardized against Reference Standard/WHO 96/670. The obtained results were used as a reference. Of the 255 examined samples, 142 samples showed a tPSA concentration ranging from 0.100–50.000 ng/mL and were used for statistical analysis.

PSA total ELISA is based on a sandwich enzyme-linked assay principle that employs anti-PSA antibodies specific for different epitopes. The secondary antibody is conjugated to HRP. Experiments were performed according to the manufacturer's protocol.

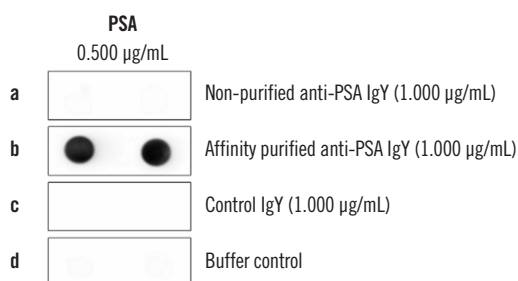
### Data analysis

All data were analyzed using GraphPad Prism version 5.0 (GraphPad Software Inc., La Jolla, CA, USA) or MedCalc 16.4 (MedCalc Software, Ostend, Belgium). The results of equimolar detection of fPSA and PSA-ACT and IBL tPSA measurement are presented as the mean ± SD of experiments performed in duplicate, whereas those of the IgY-based ELISA are presented as the mean ± SD of two independent experiments performed in duplicate. Our ELISA's analytical performance was determined on the basis of the definitions presented by Armbruster and Pry [24]; we calculated the limit of background (LoB), limit of detection (LoD), and limit of quantification (LoQ). Pearson correlation coefficient (*r*) together with *P* values and 95% confidence intervals (CIs) for *r* were determined to measure the precision of the results [25]. The combined measure of precision and accuracy was used to evaluate the concordance correlation coefficient. The measure of precision is fixed as an *r*, whereas accuracy is expressed as a bias correction factor, which measures how far from the 45° line through the origin passes the line of the best fit [26]. As the Pearson correlation coefficient does not enable the determination of whether there is a fixed or proportional difference between compared methods, we applied Passing-Bablok [27] and Bland-Altman [28] methods of comparison. To evaluate how well linear model fits to the obtained data, the CUSUM test for linearity was used [27]. As a complement to the Bland-Altman difference plot, the folded empirical cumulative distribution plot (mountain plot) was used to indicate the distribution of differences [29].

To evaluate the diagnostic potential of our ELISA, we compared serum tPSA concentrations measured by it with those from the Cobas and PSA total ELISA assays.

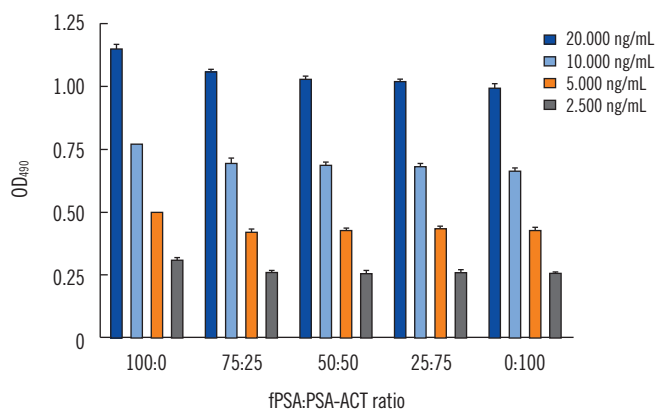
## RESULTS

For each analyzed tPSA concentration, the affinity purified (Fig. 1)



**Fig. 1.** Purification of an anti-PSA IgY antibody by affinity chromatography.

Abbreviations: PSA, prostate specific antigen; control IgY, antibodies obtained from egg yolks of hens inoculated with Freund's adjuvant only.



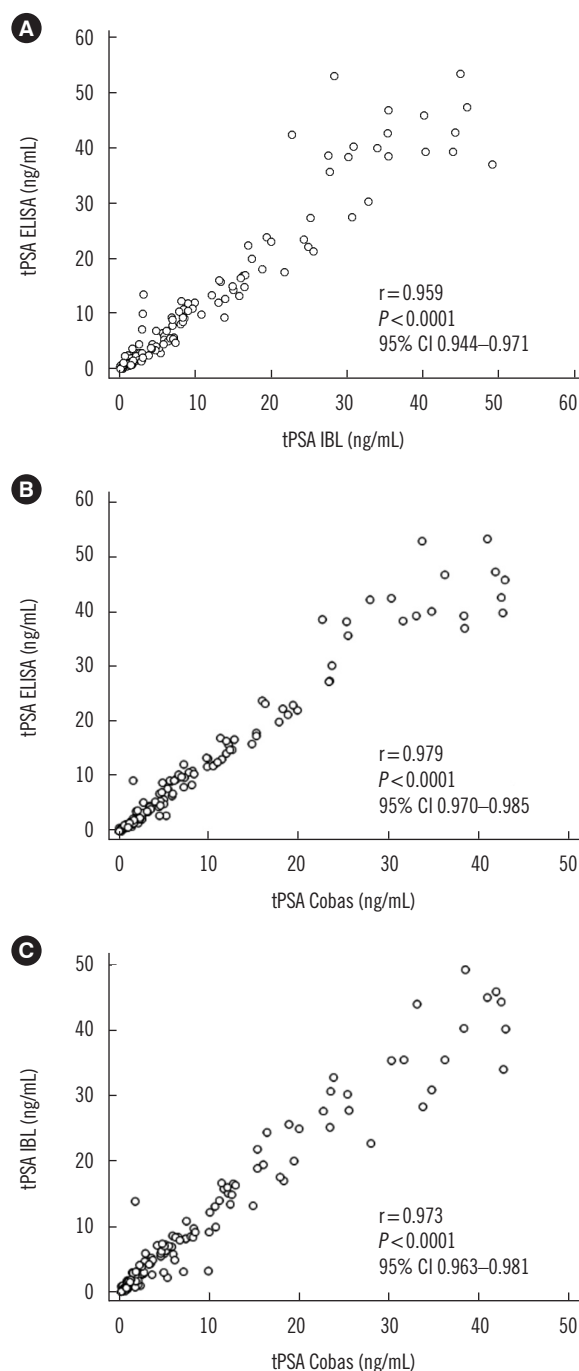
**Fig. 2.** Equimolar detection of fPSA and PSA-ACT using the generated anti-PSA IgY antibody tested by sandwich ELISA.

Abbreviations: OD, optical density; fPSA, free prostate specific antigen; PSA-ACT, prostate specific antigen complexed with  $\alpha$ -1-antichymotrypsin; tPSA, total prostate specific antigen.

anti-PSA IgY antibody displayed the ability to bind both free and complexed PSA at nearly the same molar ratio (Fig. 2; Supplemental Data Fig. S2).

The standard curve prepared for the developed IgY-based ELISA was based on the commercial Total PSA calibrator (IBL International) to ensure the most accurate measurement conditions. LoB, LoD, and LoQ, were 0.061, 0.083, and 0.100 ng/mL, respectively (also see Supplemental Data Fig. S3 and S4). The linearity of the standard curve ranged from 0.100 to 3.375 ng/mL ( $R^2=0.990$ ,  $R^2$ : goodness-of-fit measure, average value for 16 separate microplates).

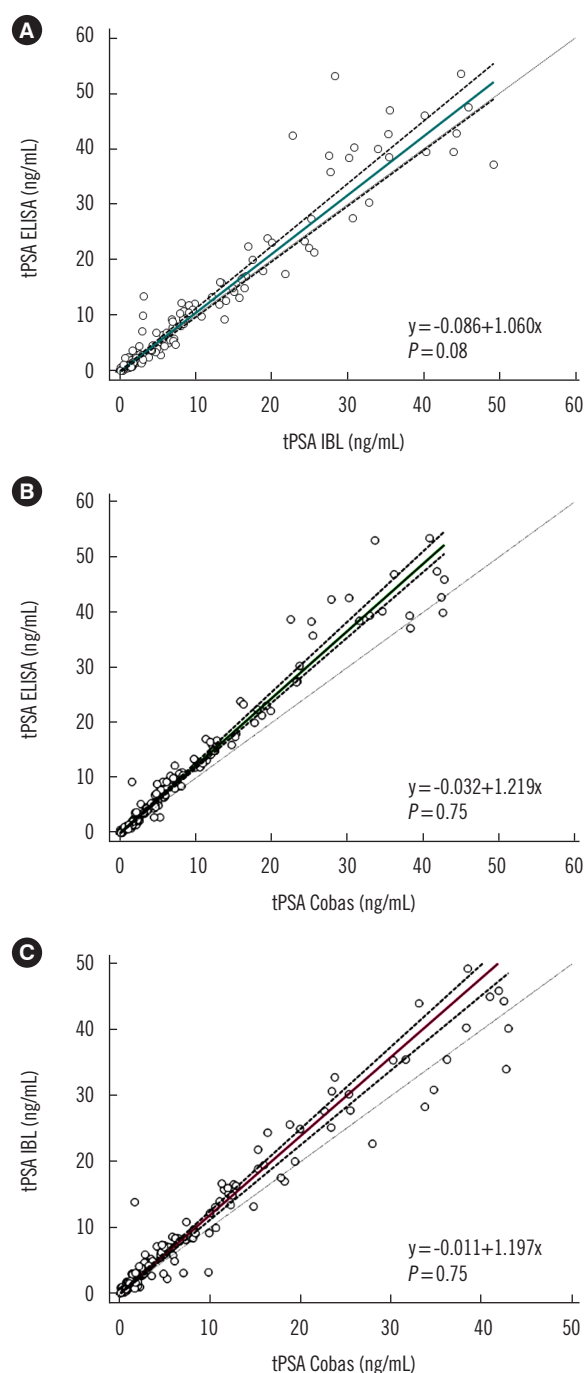
As shown in Fig. 3, the concordance correlation coefficient was 0.950 (95% CI, 0.933–0.963) with a bias correction factor of 0.991 for the comparison between IgY-based ELISA and the IBL assay results and 0.947 (95% CI, 0.932–0.959; bias correction factor=0.968) and 0.965 (95% CI, 0.953–0.975; bias correction factor=0.992) for both IgY-based ELISA and IBL as-



**Fig. 3.** Analysis of the precision of our IgY-based ELISA.

Abbreviations: PSA, prostate specific antigen; CI, confidence interval; tPSA ELISA, total serum PSA concentration determined by IgY-based ELISA; tPSA IBL, total serum PSA concentration determined with the PSA total ELISA (IBL International, Hamburg, Germany); tPSA Cobas, total serum PSA concentration determined with the Cobas 6000 (Roche Diagnostics, Warszawa, Poland).

say results versus the values obtained in the Cobas assay. The Passing-Bablok analysis results obtained for all three assays revealed correlation with no significant deviation from linearity (Fig.



**Fig. 4.** Passing-Bablok analysis for quantitative tPSA measurement assays: tPSA ELISA vs tPSA IBL (A), tPSA ELISA vs tPSA Cobas (B), and tPSA IBL vs tPSA Cobas (C). *P* was calculated using the CU-SUM test for linearity. The turquoise, green, and purple lines indicate regression lines; the dashed line indicates confidence interval curves.

Abbreviations: PSA, prostate specific antigen; tPSA ELISA, total serum PSA concentration determined by our IgY-based ELISA; tPSA IBL, total serum PSA concentration determined by the PSA total ELISA (IBL International, Hamburg, Germany); tPSA Cobas, total serum PSA concentration determined by Cobas 6000 (Roche Diagnostics, Warszawa, Poland).

4). A similar comparison in which tPSA concentration was determined using a four-parameter logistic regression model (4PL) instead of linear regression is provided in Supplemental Data Fig. S5.

Fig. 5A shows the agreement between IgY-based and IBL ELISAs. The differences between measurements for IgY-based ELISA and the Cobas assay (Fig. 5B) as well as for IBL ELISA and the Cobas assay (Fig. 5C) did not meet the 95% limit of agreement. The folded empirical cumulative distribution plot provides information on the distribution of the differences between the analyzed assays (Fig. 5D-F). Both the ELISA-based methods overestimated the PSA concentration compared with the Cobas assay.

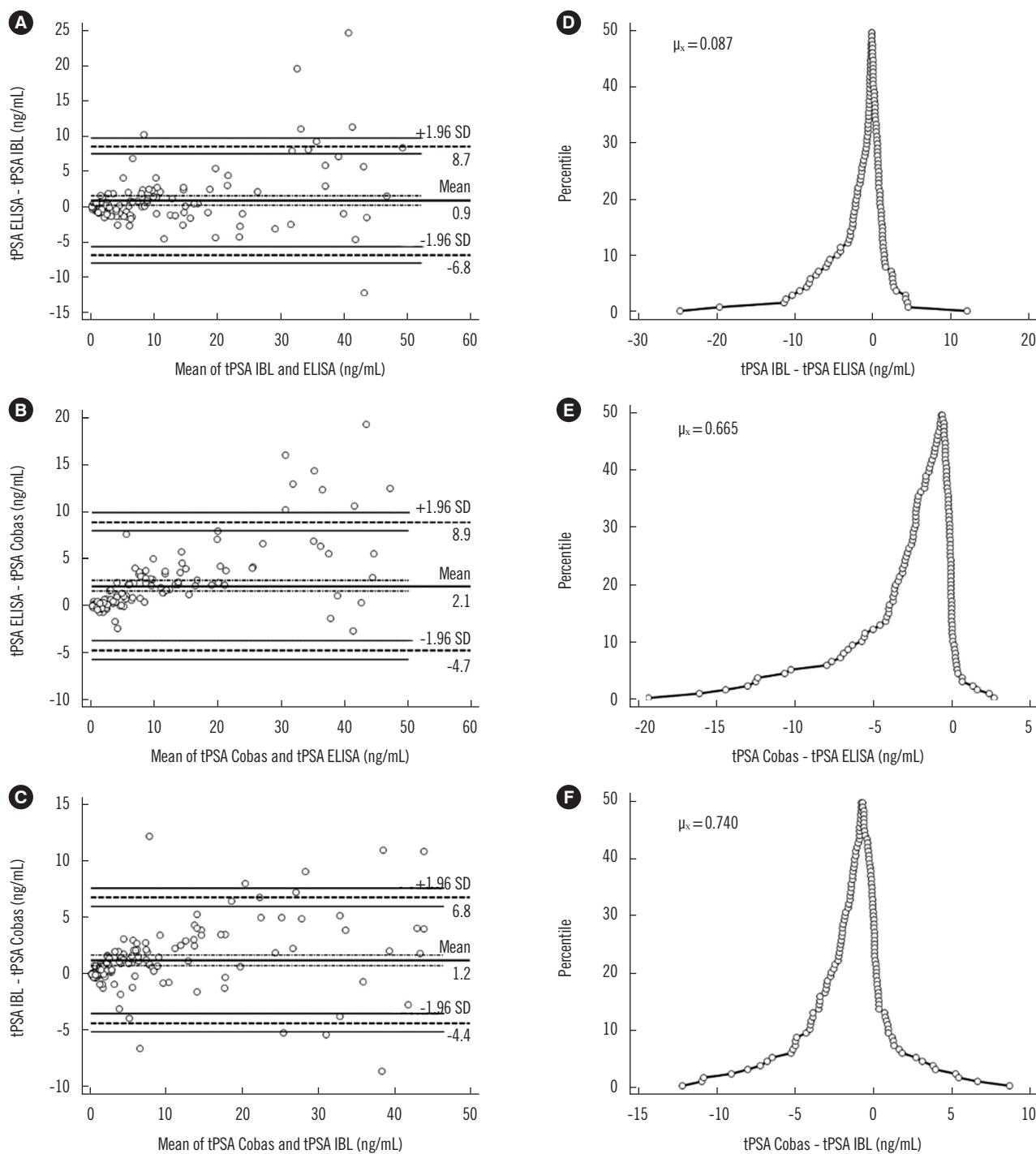
## DISCUSSION

Determining the concentration of tPSA often carries the risk of obtaining different results due to inter-assay variability, which in turn can lead to the misinterpretation of results and an incorrect diagnosis. It has been postulated that due to possible differences, the tPSA determination should be consistent during the whole patient history of diagnosis and treatment [30]. Thus, several comparative studies regarding different tPSA assays have been published in which the results of Passing-Bablok and Bland-Altman analyses have been taken into consideration. The correlation between various methods tested varies depending on the analyzed range of concentrations, type of method (manual vs automated), or calibrators used [31-33]. Importantly, although the recalibration of assays for tPSA determination according to the WHO 96/670 standard has significantly improved the compliance between the obtained results, discordances between tPSA concentration values among different assays are still observed [34]. This highlights the importance of consistently using a particular tPSA assay. We endeavored to ensure the optimal comparison conditions including the selection of a commercial calibrator and by comparing our IgY-based ELISA with certified tests for IVD.

Avian IgY represents an interesting alternative to mammalian IgG antibodies and can often be applied in immunochemical assays for diseases [35]. Thus, we analyzed the diagnostic potential of a specific anti-PSA IgY antibody.

The sandwich ELISA used for the study was based on monoclonal anti-PSA IgG as the capture antibody and affinity purified polyclonal anti-PSA IgY as the detecting antibody. In addition to the IgY characterization previously described [16], we established the ability of the developed PSA-specific IgY for equimolar detection of fPSA:PSA-ACT. This feature is key to accurate





**Fig. 5.** The correlation between quantitative tPSA measurement assays by Bland and Altman algorithm (A-C) and the percentile distribution of differences (D-F). The dashed line indicates the limit of agreement line; the thin solid lines indicate the confidence interval lines; the thick solid line indicates the average difference line; the dashed dotted lines indicate the confidence interval of the average differences line. Abbreviations: PSA, prostate specific antigen; tPSA ELISA, total serum PSA concentration determined by IgY-based ELISA; tPSA IBL, total serum PSA concentration determined with the PSA total ELISA (IBL International, Hamburg, Germany); tPSA Cobas, total serum PSA concentration determined with Cobas 6000 (Roche Diagnostics, Warszawa, Poland);  $\mu_x$ , mean difference.

determination of serum PSA concentration, as the PSA-ACT complex represents 70–90% of tPSA in human blood [9-11].

The obtained data show a strong correlation for the IgY-based ELISA and commercially available tPSA ELISA certified for IVD

(IBL). It is worth emphasizing that besides different antibody sources, both assays rely on independent calibrators for standard curve preparation. The statistical and Passing-Bablok regression analyses indicated a good agreement between the IgY-based and commercial IBL ELISA. However, neither of the ELISAs met the 95% limit of agreement in the Bland-Altman correlation analysis when compared with the Cobas assay. Most discrepancies between ELISAs (IgY-based and IBL) and the Cobas assay were observed for high serum tPSA concentrations (>20.000 ng/mL), which might be the result of different assay principles. Although the CUSUM test for linearity did not indicate any significant deviation from linearity ( $P>0.050$ ) in all three Passing-Bablok regression analyses, the slope value differed significantly from one when comparing the IgY-based or IBL commercial ELISA with the Cobas assay, which indicates a proportional difference between the compared assays.

The major limitation of the present study is the time-consuming process of specific IgY antibody purification *via* affinity chromatography, and since they are polyclonal, possible batch-to-batch differences of generated IgYs. Future steps of our research will focus primarily on assay re-design including the elimination of the mammalian antibody used for antigen capture and optimizing its application as a point-of-care device. Nevertheless, the developed IgY-based ELISA represents an alternative method to commercial ELISA for determining the PSA serum concentration.

### Authors' Disclosures of Potential Conflicts of Interest

No potential conflicts of interest relevant to this article were reported. The authors have no other relevant affiliations or financial involvement with any organization or entity with a financial interest in or financial conflict with the subject matter or materials discussed in the manuscript apart from those disclosed. No writing assistance was utilized in the production of this manuscript.

### Acknowledgments

This work was supported by the National Center for Research and Development (grant No. LIDER/08/90/I-1/09/NCBiR/2010). A. Łupicka-Słowik, M. Sieńczyk, R. Grzywa and J. Oleksyszyn are grateful to the Wrocław University of Science and Technology for support (Statute Funds 0401/0145/18). The project was supported by the Wrocław Centre of Biotechnology program:

The Leading National Research Centre (KNOW) for 2014-18 (399/2016/KNOW). The authors wish to thank Prof. Piotr Młynarz for sharing laboratory space and equipment to perform the serological studies. The authors would also like to thank Ph.D. Mateusz Psurski for helpful discussion. The Authors would like to thank Prof. Tadeusz Andruniów for creative and stimulating discussions during preparation of the manuscript.

### REFERENCES

1. Davis SN, Diefenbach MA, Valdimarsdottir H, Chen T, Hall SJ, Thompson HS. Pros and cons of prostate cancer screening: associations with screening knowledge and attitudes among urban African American men. *J Natl Med Assoc* 2010;102:174-82.
2. Parker C, Gillessen S, Heidenreich A, Horwich A, ESMO Guidelines Committee. Cancer of the prostate: ESMO Clinical Practice Guidelines for diagnosis, treatment and follow-up. *Ann Oncol* 2015;26(S5):v69-77.
3. Sosnowski R, Zagrodzka M, Borkowski T. The limitations of multiparametric magnetic resonance imaging also must be borne in mind. *Cent European J Urol* 2016;69:22-3.
4. Shariat SF and Karakiewicz PI. Screening for prostate cancer in 2007: The PSA era and its challenges are not over. *Eur Urol* 2008;53:457-60.
5. Catalona WJ and Loeb S. Prostate cancer screening and determining the appropriate prostate-specific antigen cut-off values. *J Natl Compr Canc Netw* 2010;8:265-70.
6. Polascik TJ, Oesterling JE, Partin AW. Prostate specific antigen: a decade of discovery--what we have learned and where we are going. *J Urol* 1999;162:293-306.
7. Balk SP, Ko YJ, Bublely GJ. Biology of prostate-specific antigen. *J Clin Oncol* 2003;21:383-91.
8. Kumar A, Mikolajczyk SD, Goel AS, Millar LS, Saedi MS. Expression of pro form of prostate-specific antigen by mammalian cells and its conversion to mature, active form by human kallikrein 2. *Cancer Res* 1997; 57:3111-4.
9. Travis J, Garner D, Bowen J. Human alpha-1-antichymotrypsin: purification and properties. *Biochemistry* 1978;17:5647-51.
10. Lilja H, Christensson A, Dahlén U, Matikainen MT, Nilsson O, Pettersson K, et al. Prostate-specific antigen in serum occurs predominantly in complex with alpha 1-antichymotrypsin. *Clin Chem* 1991;37:1618-25.
11. Jung K, Elgeti U, Lein M, Brux B, Sinha P, Rudolph B, et al. Ratio of free or complexed prostate-specific antigen (PSA) to total PSA: which ratio improves differentiation between benign prostatic hyperplasia and prostate cancer? *Clin Chem* 2000;46:55-62.
12. Catalona WJ, Partin AW, Slawin KM, Brawer MK, Flanigan RC, Patel A, et al. Use of the percentage of free prostate-specific antigen to enhance differentiation of prostate cancer from benign prostatic disease: a prospective multicenter clinical trial. *JAMA* 1998;279:1542-7.
13. Prcic A, Begic E, Hiros M. Actual contribution of free to total PSA ratio in prostate diseases differentiation. *Med Arch* 2016;70:288-92.
14. Filella X and Giménez N. Evaluation of [-2] proPSA and Prostate Health Index (phi) for the detection of prostate cancer: a systematic review and meta-analysis. *Clin Chem Lab Med* 2013;51:729-39.
15. Loeb S and Catalona WJ. The Prostate Health Index: a new test for the detection of prostate cancer. *Ther Adv Urol* 2014;6:74-7.
16. Łupicka-Słowik A, Walczak M, Grzywa R, Bobrek K, Łęcka M, Boivin S, et al. Generation and application of polyclonal IgY antibodies specific for full-length and nicked prostate-specific antigen. *Bioanalysis* 2014;6:

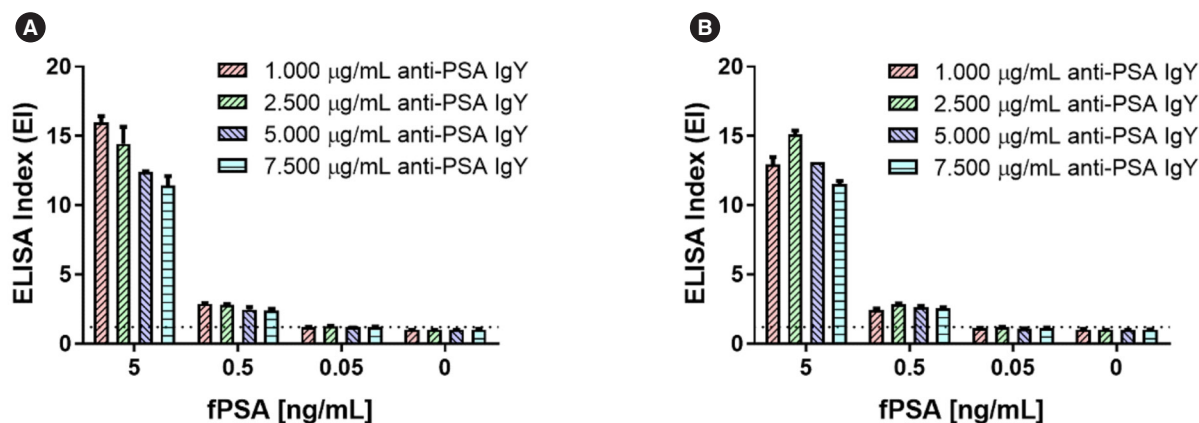
- 3197-213.
17. Schiettecatte J, Anckaert E, Smitz J. Interferences in immunoassays. In: Chiu NHL ed. Advances in immunoassay technology. Rijeka: InTech 2012:45-62.
  18. Larsson A and Mellstedt H. Chicken antibodies: a tool to avoid interference by human anti-mouse antibodies in ELISA after in vivo treatment with murine monoclonal antibodies. *Hybridoma* 1992;11:33-9.
  19. Larsson A, Wejåker PE, Forsberg PO, Lindahl T. Chicken antibodies: a tool to avoid interference by complement activation in ELISA. *J Immunol Methods* 1992;156:79-83.
  20. Wang ZQ, Fu GY, Jing FJ, Jin J, Ren HJ, Jiang P, et al. Detection of *Trichinella spiralis* circulating antigens in serum of experimentally infected mice by an IgY-mAb sandwich ELISA. *Foodborne Pathog Dis* 2012;9: 727-33.
  21. Leenaars PP, Hendriksen CF, de Leeuw WA, Carat F, Delahaut P, Fischer R, et al. The production of polyclonal antibodies in laboratory animals. The report and recommendations of ECVAM Workshop 35. *Altern Lab Anim* 1999;27:79-102.
  22. Polson A, von Wechmar MB, van Regenmortel MH. Isolation of viral IgY antibodies from yolks of immunized hens. *Immunol Commun* 1980;9: 475-93.
  23. Łupicka-Stówik A, Psurski M, Grzywa R, Bobrek K, Smok P, Walczak M. Development of adenosine deaminase-specific IgY antibodies: Diagnostic and inhibitory application. *Appl Biochem Biotechnol* 2018;184:1358-74.
  24. Armbruster DA and Pry T. Limit of blank, limit of detection and limit of quantitation. *Clin Biochem Rev* 2008;29:S49-S52.
  25. Armitage P, Berry G, Matthews JNS. Statistical methods in medical research, Fourth Edition. Blackwell Science 2002;187-207.
  26. Lin LIK. A Concordance correlation coefficient to evaluate reproducibility. *Biometrics* 1989;45:255-68.
  27. Passing H and Bablok W. A new biometrical procedure for testing the equality of measurements from two different analytical methods. Application of linear regression procedures for method comparison studies in Clinical Chemistry, Part 1. *Clin Chem Clin Biochem* 1983;21:709-20.
  28. Bland JM and Altman DG. Measuring agreement in method comparison studies. *Stat Methods Med Res* 1999;8:135-60.
  29. Krouwer JS and Monti KL. A simple, graphical method to evaluate laboratory assays. *Eur J Clin Chem Clin Biochem* 1995;33:525-7.
  30. Semjonow A, de Angelis G, Oberpenning F, Schmidt HP, Brandt B, Hertle L. The clinical impact of different assays for prostate specific antigen. *BJU Int* 2000;86:590-7.
  31. Carsten S, Klaas M, Müller C, Schnorr D, Loening SA, Jung K. Interchangeability of measurements of total and free prostate-specific antigen in serum with 5 frequently used assay combinations: an update. *Clin Chem* 2006;52:59-64.
  32. Kort SAR, Martens F, Vanpoucke H, van Duijnhoven HL, Blankenstein MA. Comparison of 6 automated assays for total and free prostate-specific antigen with special reference to their reactivity toward the WHO 96/670 reference preparation. *Clin Chem* 2006;52:1568-74.
  33. Murthy V, Rishi A, Gupta S, Kannan S, Mahantshetty U, Tongaonkar H, et al. Clinical impact of prostate specific antigen (PSA) inter-assay variability on management of prostate cancer. *Clin Biochem* 2016;49:79-84.
  34. Foj L, Fiella X, Alcover J, Augé JM, Escudero JM, Molina R. Variability of assay methods for total and free PSA after WHO standardization. *Tumor Biol* 2014;35:1867-73.
  35. Liu LN, Jing FJ, Cui J, Fu GY, Wang ZQ. Detection of circulating antigen in serum of mice infected with *Trichinella spiralis* by an IgY-IgM mAb sandwich ELISA. *Exp Parasitol* 2013;133:150-5.
  36. Silva DA, Silva NM, Mineo TW, Pajuaba Neto AA, Ferro EA, Mineo JR. Heterologous antibodies to evaluate the kinetics of the humoral immune response in dogs experimentally infected with *Toxoplasma gondii* RH strain. *Vet Parasitol* 2002;107:181-95.



## SUPPLEMENTAL MATERIALS

### Optimization of the IgY-Based ELISA

Optimization of the IgY-based ELISA for PSA detection was performed for different concentrations of PSA-specific mouse monoclonal IgG and avian polyclonal IgY antibodies (Supplemental Data Fig. S1). The microtiter plate was coated with an anti-PSA mouse monoclonal IgG antibody, blocked, and incubated with fPSA at different concentrations (5.000, 0.500, and 0.050 ng/mL). For the detection of an antigen, affinity purified anti-PSA IgY antibodies were used at different concentrations (1.000, 2.500, 5.000, and 7.500  $\mu\text{g/mL}$ ). The results are presented as  $\text{EI} \pm \text{SEM}$  values. As optimal conditions, we assumed both antibody concentrations were 2.500  $\mu\text{g/mL}$  because of the highest ELISA Index (where  $\text{EI} = \text{OD}_{\text{sample}} / \text{OD}_{\text{control}}$ ). Values of  $> 1.200$  were considered positive [36] for 50.000  $\mu\text{g/mL}$  of PSA protein, which was determined as the detection limit, as previously shown [16].

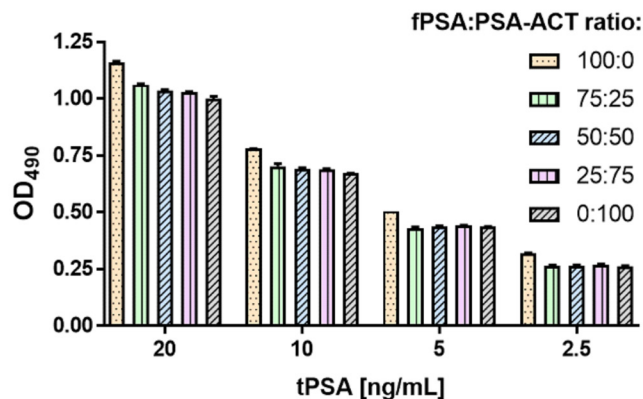


**Supplemental Data Fig. S1.** Optimization of IgY-based sandwich ELISA for two different concentrations of IgY antibodies (A. 2.500  $\mu\text{g/mL}$ , B. 5.000  $\mu\text{g/mL}$ ).

Abbreviation: fPSA, free prostate specific antigen.

## Equimolar Detection of PSA and PSA-ACT by Generated Anti-PSA IgY Antibody

The methodology of this assay is described in Materials and Methods section (Equimolar Detection of fPSA and PSA-ACT). Statistical analysis for different PSA : PSA-ACT ratios at different tPSA concentrations (Supplemental Data Fig. S2) was performed using a nonparametric Kruskal-Wallis test followed by Dunn's multiple comparisons test. The Kruskal-Wallis analysis for the tPSA concentration equal to 20.000 ng/mL showed significant differences in the dataset. Dunn's multiple comparisons test was unable to determine the exact sets within the dataset for which these differences were significant (with  $P \leq 0.050$ ), but the lowest  $P$  was obtained for the ratios 100:0 vs 0:100 ( $P=0.082$ ). At a concentration of 10 ng/mL of tPSA, the Kruskal-Wallis test revealed statistically significant differences, and once again, multiple comparisons Dunn's test was unable to determine the exact sets with  $P > 0.050$ ; however, the lowest  $P$  values were obtained for the ratios 100:0 vs 0:100 PSA:PSA-ACT ratios ( $P=0.082$ ). For the concentration of 5.000 and 2.500 ng/mL of tPSA, there were no statistically significant differences according to Kruskal-Wallis analysis. The nonparametric test was used because of the statistically significant Brown-Forsythe test result.



**Supplemental Data Fig. S2.** Equimolar detection of fPSA and PSA-ACT using the generated anti-PSA IgY antibody tested by sandwich ELISA.

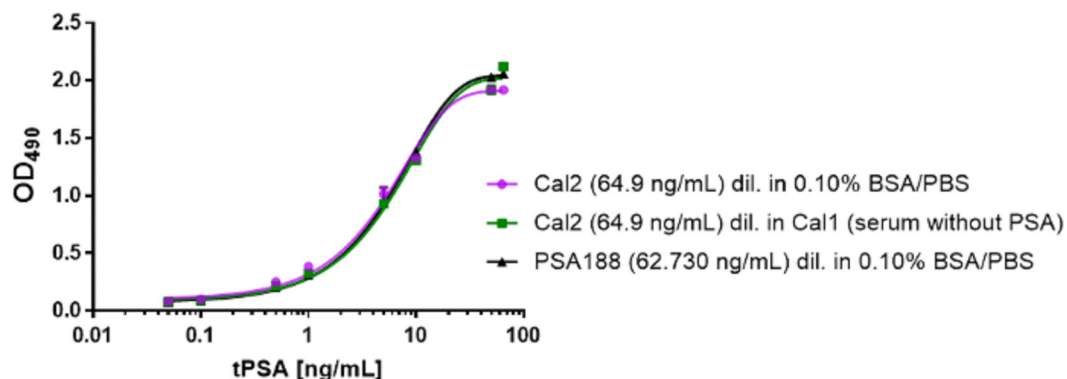
Abbreviations: fPSA, free prostate specific antigen; tPSA, total prostate specific antigen; OD, optical density; PSA-ACT, PSA complexed with  $\alpha$ -1-antichymotrypsin.

## Performance of the IgY-Based ELISA Assay

To determine whether the samples with a PSA protein concentration above the limit of quantification can be diluted into the valid range for analysis, we performed dilutional linearity evaluation with a tPSA ELECSYS calibrator (Cal2, 64.900 ng/mL; Roche Diagnostics).

The microtiter plate was coated with an anti-PSA mouse monoclonal IgG antibody (2.500 µg/mL), blocked, and incubated with a commercial calibrator sample (64.900 ng/mL), serial dilutions (50.000–0.050 ng/mL) of the calibrator, a selected serum sample (62.730 ng/mL), and serial dilutions of the serum sample ranging from 50.000 to 0.050 ng/mL. To detect the antigen, an affinity purified anti-PSA IgY antibody was used (2.500 µg/mL). The results are presented as  $OD_{490} \pm SD$  values.

Unfortunately, because of the calibrator concentration, we were unable to reach a concentration high enough to examine the presence of the Hook Effect, and the possibility of diluting the sample was limited (Supplemental Data Fig. S3). As a result, samples diluted from the Cal2 64.900 ng/mL with assay buffer (0.100% BSA in PBS) or with the tPSA ELECSYS calibrator “0” (Cal1; Roche Diagnostics) allowed us to obtain similar values for samples diluted to 5.000 and 0.500 ng/mL. The ratios between determined and expected values were 1.230 and 1.180, respectively, when calculated from the 4PL curve (for linear regression equation, the values were 1.260 and 1.210, respectively). For the serum sample selected according to the criterion of similar concentration (62.730 ng/mL), the ratio of the sample and the commercial Cal2 (64.900 ng/mL) was equal to 1.110 from the 4PL curve (1.200 when calculated from the linear regression equation).

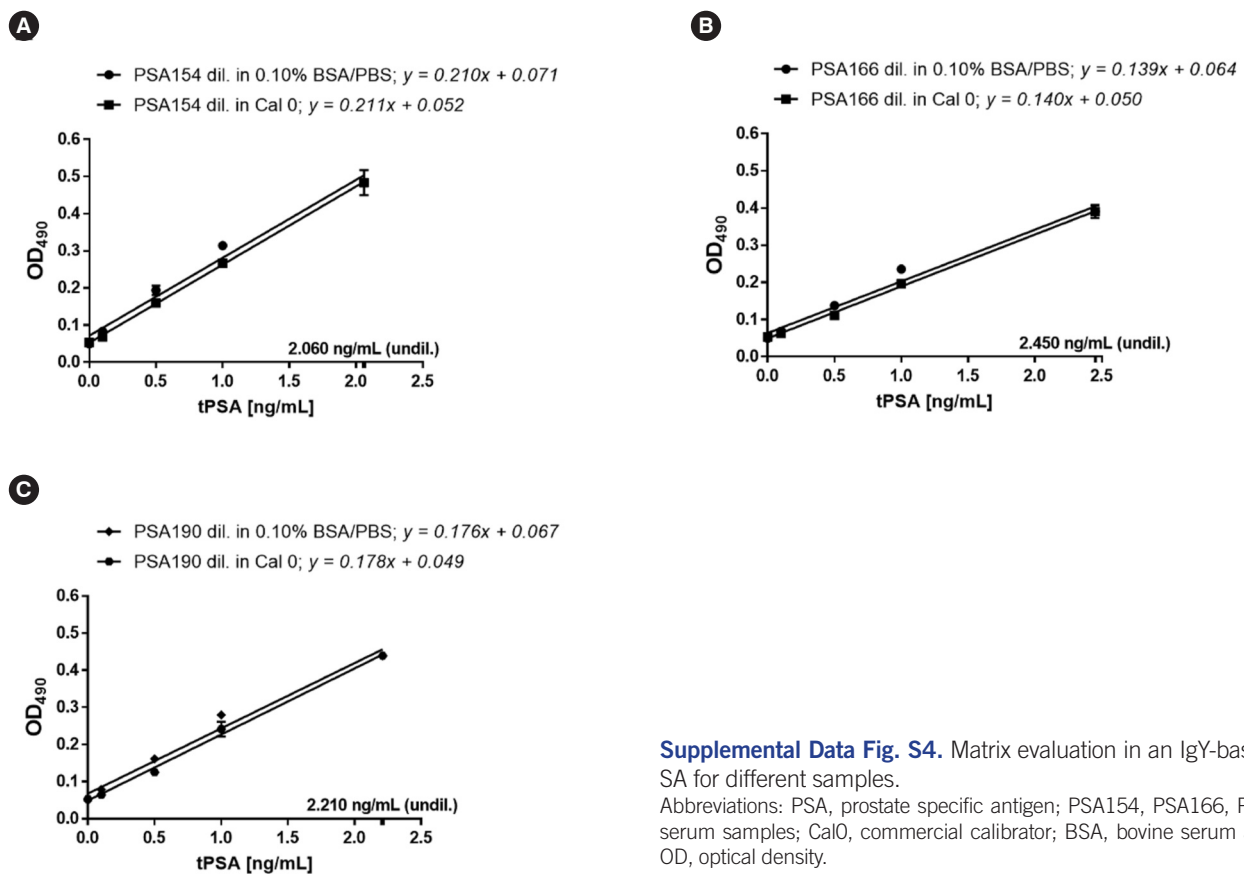


**Supplemental Data Fig. S3.** Dose-response curve in a IgY-based ELISA for different samples and dilution agents.

Abbreviations: BSA, bovine serum albumin; PSA, prostate specific antigen; tPSA, total PSA; Cal1/Cal2, commercial tPSA calibrators; OD, optical density.

To determine possible differences in the tPSA concentration values, which might result from the use of a particular assay buffer, we performed ELISA using samples with a tPSA concentration within the linear range of our IgY-based ELISA (slightly over 2.000 ng/mL), prepared/diluted in an assay buffer and in commercial calibrator serum without PSA protein (Cal1) and undiluted. The microtiter plate was coated with an anti-PSA mouse monoclonal IgG antibody (2.500 µg/mL), blocked, and incubated with different serum samples (undiluted and at a concentration of 1.000, 0.500, and 0.050 ng/mL). The exact concentrations of tPSA (REF values) are marked above the x axis. For detection of the antigen, an affinity purified anti-PSA IgY antibody was used (2.500 µg/mL). The results are presented as  $OD_{490} \pm SD$  values.

Based on the obtained absorbance values, we determined and compared linear regression curves (Supplemental Data Fig. S3).



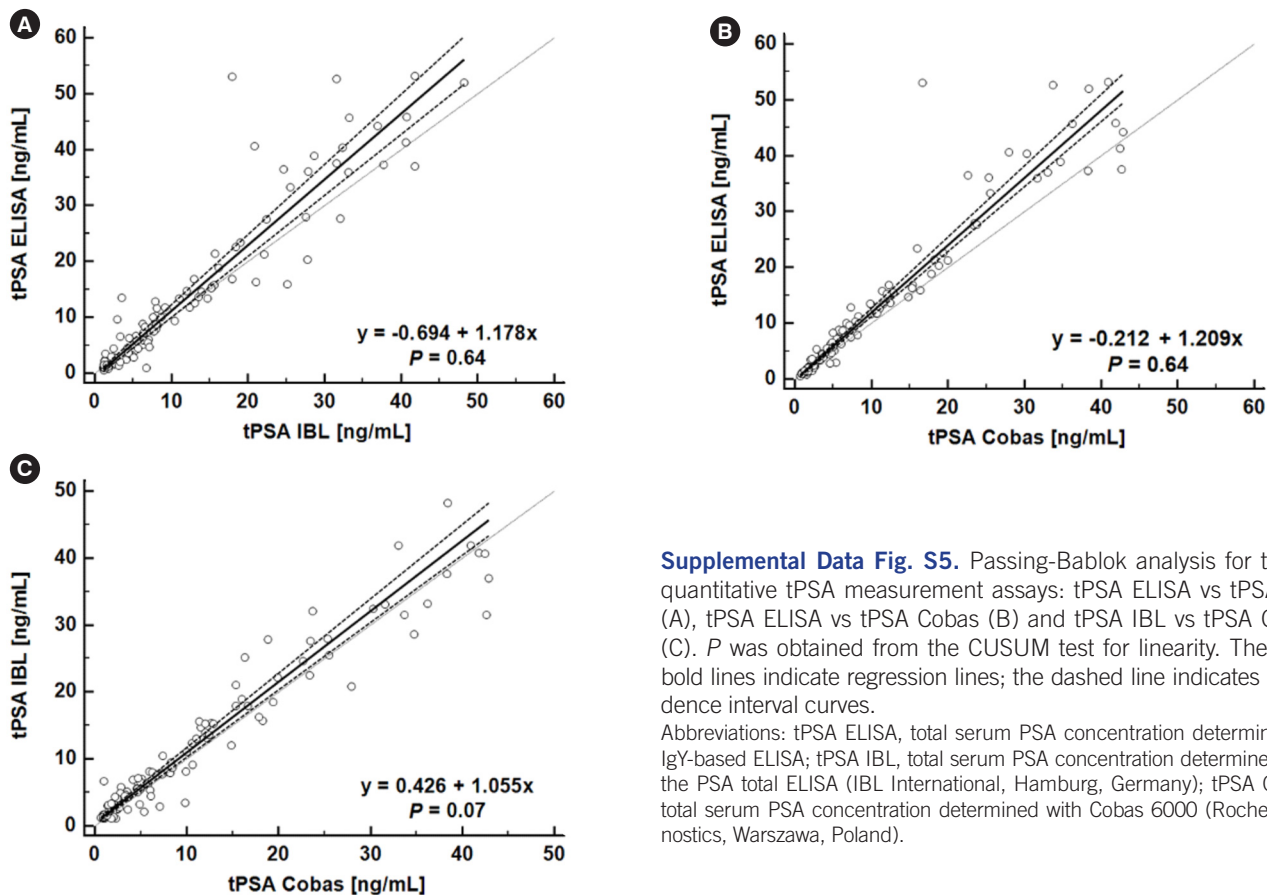
**Supplemental Data Fig. S4.** Matrix evaluation in an IgY-based ELISA for different samples.

Abbreviations: PSA, prostate specific antigen; PSA154, PSA166, PSA 190, serum samples; Cal0, commercial calibrator; BSA, bovine serum albumin; OD, optical density.

In addition, we determined the accuracy and precision of two samples that were prepared as Cal2 dilutions in assay buffer (2.250 and 0.250 ng/mL) among all 16 ELISA plates. The percent difference was 2.640% for the 2.250 ng/mL sample and 3.850% for the 0.250 ng/mL sample. The precision, determined as the range between measurements, was 0.140 and 0.090 ng/mL, respectively.

## Passing-Bablok Analysis for Tested Quantitative tPSA Measurement Methods with tPSA Concentrations Determined Using the 4PL Equation

Statistical analysis was performed for 118 samples. The difference between the amount of analyzed probes between the linear and 4PL equation results from the specificity of the parametric test (concentration logarithms) and a limited set of calibrators provided by the manufacturer of the commercial kit (PSA total ELISA, IBL International, Hamburg, Germany). The analysis performed for results obtained for the IgY-based and IBL ELISA revealed a correlation described by the formula  $y = -0.694 + 1.178x$  with no deviation from linearity ( $P = 0.640$ ,  $P > 0.050$ ; Supplemental Data Fig. S4A). The correlation of both assays (IgY-based ELISA and IBL) was confirmed by the slope (1.178; 95% CI, 1.094–1.256) and intercept (−0.694; 95% CI, 0.966–0.360) values. The linear relationship of data obtained for IgY-based ELISA vs REF assay is described by the equation  $y = -0.212 + 1.209x$  with no significant deviation from linearity ( $P = 0.64$ ,  $P > 0.05$ ). The determined slope and intercept values were equal to 1.209 (95% CI, 1.162–1.276) and −0.212 (95% CI, 0.422–0.036; Supplemental Data Fig. S4B), respectively. Passing-Bablok linear regression analysis for results obtained in IBL and REF assays enabled the calculation of the regression equation  $y = 0.426 + 1.055x$  with no deviation from linearity ( $P = 0.070$ ,  $P > 0.050$ ; Supplemental Data Fig. S4C). The slope and intercept values were equal to 1.055 (95% CI, 1.006–1.110) and 0.426 (95% CI, 0.173–0.636), respectively.



**Supplemental Data Fig. S5.** Passing-Bablok analysis for tested quantitative tPSA measurement assays: tPSA ELISA vs tPSA IBL (A), tPSA ELISA vs tPSA Cobas (B) and tPSA IBL vs tPSA Cobas (C).  $P$  was obtained from the CUSUM test for linearity. The solid bold lines indicate regression lines; the dashed line indicates confidence interval curves.

Abbreviations: tPSA ELISA, total serum PSA concentration determined by IgY-based ELISA; tPSA IBL, total serum PSA concentration determined with the PSA total ELISA (IBL International, Hamburg, Germany); tPSA Cobas, total serum PSA concentration determined with Cobas 6000 (Roche Diagnostics, Warszawa, Poland).