



Published in final edited form as:

*Neurosci Lett.* 2019 January 23; 692: 107–114. doi:10.1016/j.neulet.2018.10.055.

## Neuronal serine racemase associates with Disrupted-In-Schizophrenia-1 and DISC1 agglomerates: Implications for schizophrenia

Ariel A. Jacobi<sup>1</sup>, Sarah Halawani<sup>3</sup>, David R. Lynch<sup>2,3</sup>, and Hong Lin<sup>2,3</sup>

<sup>1</sup>Department of Chemistry, School of Arts and Sciences, University of Pennsylvania,

<sup>2</sup>Departments of Pediatrics and Neurology, University of Pennsylvania Perelman School of Medicine,

<sup>3</sup>Children's Hospital of Philadelphia, Philadelphia PA, 19104

### Abstract

D-serine, an endogenous coagonist of N-methyl-D-aspartate receptors (NMDARs) at the glycine binding site, is synthesized by serine racemase (SR) through conversion of L-serine. Dysregulation of SR/D-serine and Disrupted-In-Schizophrenia-1 (DISC1) contributes to the pathogenesis of schizophrenia at converging pathways, as perturbation of SR-DISC1 binding in astrocytes elicits schizophrenia-like behaviors in mice. However, an association of neuronal SR with DISC1 remains elusive. Here we report that SR associates with DISC1 and its agglomerates in cortical neurons, which can be modulated by NMDAR activity. Endogenous SR colocalizes with DISC1 large agglomerates in the soma and with smaller puncta in the nucleus and dendrites of cortical neurons. Co-immunoprecipitation assays demonstrate SR interaction with DISC1 in cortical neuronal lysates, suggesting the physiological presence of functional SR-DISC1 complexes in neurons. Moreover, exogenous D-serine application significantly increases the interaction of SR with DISC1, the number of DISC1-SR large agglomerates and the levels of DISC1 agglomerated form along with SR in the triton-insoluble pellet fraction, whereas application of glycine with a glycine transporter inhibitor fails to increase their interactions, abundance of DISC1-SR large agglomerates and levels of DISC1 agglomerated form. This increase by D-serine application is blocked by 7-chlorokynurenic acid, a specific antagonist at the glycine site of NMDARs, suggesting mediation through NMDARs. Our findings thus demonstrate neuronal SR association with DISC1 and its agglomerates, which can be modulated by D-serine, thereby validating a novel

---

**CORRESPONDING AUTHOR:** Hong Lin, Ph.D., Department of Pediatrics and Neurology, University of Pennsylvania Perelman School of Medicine, Children's Hospital of Philadelphia, Abramson Research Center 502C, 3615 Civic Center Blvd, Philadelphia, Pennsylvania 19104-4318, Tel: 267-426-7957, Fax: 215-590-3779 linh@email.chop.edu.

Author contributions

A.J. and H.L. designed and performed the experiments, analyzed and interpreted the data and wrote the manuscript; S. H. performed the experiments; D.L. designed the experiments, interpreted the data and wrote the manuscript.

**Publisher's Disclaimer:** This is a PDF file of an unedited manuscript that has been accepted for publication. As a service to our customers we are providing this early version of the manuscript. The manuscript will undergo copyediting, typesetting, and review of the resulting proof before it is published in its final citable form. Please note that during the production process errors may be discovered which could affect the content, and all legal disclaimers that apply to the journal pertain.

Competing interests

The authors declare no competing or financial interests.

neuronal SR-DISC1 complex responsive to NMDAR activation and providing a molecular mechanism by which pathways implicated in schizophrenia converge.

## Keywords

D-serine; serine racemase; Disrupted-In-Schizophrenia-1; cortical neurons; NMDA receptor; agglomerates

## Introduction

NMDARs are glutamate-gated ionotropic channels that are crucial for many physiological processes including neurotransmission, synaptic plasticity, and learning and memory. In addition to glutamate, NMDAR activation requires the binding of a coagonist, D-serine or glycine, to a specific site of the NR1 subunit of NMDARs [1–8]. In some paradigms, D-serine preferentially gates synaptic NMDARs and glycine preferentially gates extrasynaptic NMDARs [5, 9]. D-serine is synthesized by serine racemase (SR) through conversion of L-serine and degraded by D-amino acid oxidase (DAAO) [10–16]. D-serine is now recognized as an important physiological modulator in many NMDAR-dependent processes and functions, including brain development, synaptic transmission and plasticity, learning and memory, and social interactions [3–8, 17–23].

Abnormally reduced levels of D-serine have been found in the cerebrospinal fluid and postmortem brains of schizophrenia patients [24–26]. D-serine/NMDAR hypofunction have been implicated in the pathogenesis of schizophrenia [27–37]. Targeted deletion of SR in mice reduces D-serine production and glutamatergic transmission in the forebrain and leads to schizophrenia-like behavior [30]. Disruption of D-serine/SR during development has also been associated with schizophrenia. Neonatal disruption of SR and D-serine synthesis in mice leads to schizophrenia-like behavioral abnormalities in adulthood [34]. These findings strongly suggest that SR and D-serine are crucial for maintaining normal cortical functions in healthy individuals and implicate SR/D-serine deficiency in pathogenesis of schizophrenia.

SR is found preferentially in excitatory and inhibitory neurons, and D-serine is predominantly produced and released by neurons in rodent and human brains [8, 20, 38–44]. SR is a highly regulated enzyme that binds several NMDAR- and AMPA receptor (AMPA)-interacting proteins including DISC1, GRIP1, PICK1, stargazin and PSD-95 [20, 35, 45–49]. Our previous studies have demonstrated that SR associates with PSD-95 in postsynaptic terminals and that D-serine stabilizes glutamatergic synapses during development in cortical neurons [20, 48]. In the current study, we investigate the association of SR with DISC1 in neurons and how D-serine modulates their association.

## Materials and Methods

### Materials

Timed-pregnant C57BL/6 mice were purchased from Charles River Laboratories. Biochemicals included MK-801, D-serine, glycine and lithium (Sigma), 7-chlorokynurenic

acid (7-CK) (Tocris Bioscience). Antibodies included  $\alpha$ -PSD-95 (BD Transduction Laboratories, 1:1000 for WB; NeuroMab, 75–028, 1:150 for ICC)[20, 29],  $\alpha$ -DISC1 (Millipore, ABN425, 1:250 for ICC; 1:1000 for WB),  $\alpha$ -serine racemase (Abcam, ab45434, 1:250 for ICC, 1:1000 for WB, 2.5 $\mu$ g for IP) [20],  $\alpha$ -actin (Abcam, ab3280, 1:5000 for WB) [20, 28, 29, 50]

### Neuronal cultures and Drug treatment

Primary cortical cultures from E17–19 C57BL/6 were prepared as described [50] in accordance with the protocol approved by The Children’s Hospital of Philadelphia Institutional Animal Care and Use Committee (IACUC). Briefly, the cortex was dissected, gently minced, trypsinized (0.027%, 37 °C; 7% CO<sub>2</sub> for 20 min), and then washed with 1 $\times$  HBSS. Neurons were seeded to a density of 3  $\times$  10<sup>5</sup> viable cells in 35-mm culture dish with five 12-mm glass coverslips (low-density culture, 3 $\times$ 10<sup>4</sup>/cm<sup>2</sup>) or a density of 1.6  $\times$  10<sup>6</sup> viable cells in 60-mm culture dishes (high-density culture, 8 $\times$ 10<sup>4</sup>/cm<sup>2</sup>). The culture dishes were coated with poly-D-Lysine (100  $\mu$ g/ml) prior to seeding neurons. Neurons were maintained at 37°C with 5% CO<sub>2</sub> in Neurobasal medium with B27 supplement. Cortical cultures contain 5–10% of glia cells and 90–95% cortical neurons. At 15–17 (high-density cultures, 8 $\times$ 10<sup>4</sup>/cm<sup>2</sup>) or 21–23 (low-density cultures, 3 $\times$ 10<sup>4</sup>/cm<sup>2</sup>) *days in vitro* (DIV), cultures were subject to drug treatment, western blotting analysis, co-immunoprecipitation and immunocytochemistry. For drug treatment, the cortical cultures were treated with vehicle, D-serine (50  $\mu$ M), D-serine (50  $\mu$ M) + MK-801 (10  $\mu$ M), MK-801 (10  $\mu$ M), or glycine (100  $\mu$ M) for 7 days, or with vehicle, D-serine (50  $\mu$ M) D-serine (50  $\mu$ M) + 7-CK (50  $\mu$ M), glycine (50  $\mu$ M) + lithium (100  $\mu$ M) for 24 hrs.

### Cell lysate preparation and fraction isolation

For cell lysate preparation, cultures were lysed in lysis buffer (150 mM NaCl, 1 mM EDTA, 100 mM Tris-HCl, 1% Triton X-100, and 0.5% sodium deoxycholate, pH 7.4) supplemented the day of use with 1:500 EDTA-free protease inhibitor cocktail III (Calbiochem) for 1 hr at 4°C. The whole cell lysates were harvested and centrifuged at 16,100  $\times$  *g* for 20 mins at 4°C. After the centrifugation, the supernatants were collected as the triton-soluble fraction for co-immunoprecipitation assays and western blot analysis, the pellets were collected as the triton-insoluble fraction. The supernatant and pellets were stored at –80°C until use.

### Co-immunoprecipitation and Western blotting analysis

Co-immunoprecipitation and Western blotting were performed as described previously [51]. Protein content of cortical lysates was determined using BCA Protein Assay (Thermo Scientific). Equal amounts of total protein lysates (250  $\mu$ g) were first added 2  $\mu$ g primary antibody ( $\alpha$ -SR) or normal IgG and incubated at 4°C for 2hrs. Immunocomplexes were then precipitated with protein G-agarose beads shaking overnight at 4°C, washed twice in lysis buffer, eluted by boiling in SDS-PAGE sample buffer, and subjected to Western blot analysis. Equal volumes of eluted buffers for co-immunoprecipitation assay or equal amounts of total protein (15  $\mu$ g cell lysate) for protein input analysis were subjected to 4–12% NuPAGE Gel for electrophoresis and transferred to nitrocellulose membranes. Membranes were blocked with 3% nonfat milk and incubated with primary antibody overnight at 4 °C. Blots were then incubated with appropriate horseradish peroxidase, HRP-

conjugated secondary antibodies (Cell Signaling) for 2 hrs at room temperature and then washed; reaction bands were visualized using a luminol-enhanced chemiluminescence (ECL) HPR substrate (Thermo Scientific). Each blot was then incubated with stripping buffer (2% SDS, 50 mM Tris, pH 6.8, and 100 mM  $\beta$ -mercaptoethanol) for 1 hr at room temperature to remove the signals and reprobbed for other proteins. For quantification analysis, reaction product levels were quantified by scanning densitometry and the ratio of co-precipitated protein was normalized by input levels from 3 different cultures and experiments using NIH Image J software.

### Immunocytochemistry and fluorescence imaging

Primary cultured cortical neurons were fixed for 20 min at 4°C with 4% paraformaldehyde in phosphate-buffered saline (PBS) (pH 7.4), and then subjected to the immunostaining procedure. For immunostaining procedure, after blocking with 5% normal goat serum and 1 % bovine serum albumin in combination with 0.3% (vol/vol) Triton X-100 in PBS at room temperature for 1 hr, the coverslips or slides were incubated with primary antibodies at 4°C overnight and then secondary antibodies conjugated to Alexa Fluor 488 or 568 (Invitrogen) at room temperature for 60–90 mins. Following several washes with PBS, cells or slides were mounted with Vectashield with DAPI (Vector Laboratories).

Fluorescence images were obtained with Leica laser scanning confocal microscope. For cortical cultures, neurons were sequentially stained for SR, DISC1 and PSD-95. For quantification analysis, the confocal images were acquired from three to four 4 neurons for each treatment condition (Control, D-serine, D-serine + 7-CK, or Glycine + Lithium), we quantified the number of large DISC1- and SR-positive agglomerates in the soma and nucleus on one z-plane. The area of the soma (including the nucleus) in the image was measured via NIH Image J software, so the number of agglomerates per neuron could be normalized to the somatic area for the respective neuron. Additionally, the percentage of DISC1 and SR colocalization with DISC1- and SR-positive agglomerates were also quantified from three neurons in three different experiments. Statistical analysis was performed on these normalizations within and across the four treatment conditions.

### Statistical analysis

Data were shown as the mean  $\pm$  S.E.M. Experiments were analyzed using Student's *t*-test to compare two conditions or ANOVA followed by planned comparisons of multiple conditions. Significance was set at  $P < 0.05$ .

## Results

### DISC1 distributes as large agglomerates and small puncta in cortical neurons

To explore the possible association of DISC1 with SR in cortical neurons, we first examined the expression and localization of DISC1 in primary cortical neuronal cultures at 15–23 *days in vitro* (DIV) by immunocytochemistry. In GABA-containing cortical interneurons, PSD-95 localizes to the shaft-like synapses on the somatic and dendritic membrane, whereas in cortical glutamatergic neurons, PSD-95 is distributed in the soma and in dendritic spine-like synapses [20]. DISC1 is abundant in both GABAergic (Figs. 1A, 1D, 1G and 1J) and

glutamatergic neurons (Figs. 1A', 1D', 1G' and 1J'), marked by PSD-95-positive non-spiny (Figs. 1B, 1E, 1H and 1K) or spiny (Figs. 1B', 1E', 1H' and 1K') morphology, respectively. The intensity of DISC1 immunofluorescence is much higher in GABAergic (Figs. 1A and 1D) than in glutamatergic neurons (Figs. 1A' and 1D'), suggesting higher DISC1 levels in GABAergic neurons. In both types of neurons, DISC1 is more abundant in the soma than in dendrites, nucleus and axons. Interestingly, DISC1 appears as large agglomerates in the soma and small puncta in the nucleus and dendrites. The large somatic DISC1 agglomerates may be high molecular weight multimers of DISC1 as reported [52]. Notably, a few DISC1 puncta colocalize with PSD-95 puncta in the dendrites of cortical neurons (Figs. 1J–1L and 1J'–1L').

### SR associates with DISC1 and its agglomerates in cortical neurons

We then examined the association of SR with DISC1 agglomerates by sequentially staining primary cortical neuronal cultures with DISC1 and SR antibodies. While SR appears as puncta in the soma, nucleus and dendrites [20], the large DISC1 agglomerates (Figs. 2A and 2D, 2A' and 2') colocalize with SR puncta (Figs. 2B and 2E, 2B' and 2E') in the soma of GABAergic (Figs. 2A–2F) and glutamatergic neurons (Figs. 2A'–2F'). SR colocalizes with or are adjacent to DISC1 small puncta in the dendrites and synapses of GABAergic and glutamatergic cortical neurons (Figs. 2G–2I and 2G'–2I'). We also observed colocalization of SR with DISC1 small puncta in the nucleus, especially on the nuclear membrane as distinguished by DAPI staining (Fig. 3A–3F). More intriguingly, almost all of DISC1 puncta colocalize with SR in the soma and nucleus, whereas only  $28\pm 3\%$  of SR puncta colocalizes with DISC1 large agglomerates (Fig. 3G), suggesting that DISC1 agglomerates may be modulated by SR. The results thus demonstrate that SR associates with DISC1 agglomerates in cortical neurons.

We further examined the *in vivo* interactions between SR and DISC1 in primary cortical neurons using coimmunoprecipitation assays. In cortical neuronal lysates,  $\alpha$ -SR antibody but not control IgG co-precipitates endogenous DISC1, identified at a molecular weight of ~94 kDa as predicted for full-length DISC1 (Fig. 4), demonstrating SR-DISC1 interaction in cortical neurons. Our findings thus suggest the physiological presence of functional SR-DISC1 complexes in neurons.

### D-serine enhances SR-DISC1 interactions and increases the abundance of large DISC1-SR agglomerates in cortical neurons through NMDA receptors

To explore if D-serine modulate neuronal SR-DISC1 interactions, we examined if D-serine treatment for 24hrs modulates SR-DISC1 interactions using co-immunoprecipitation assays. Exogenous application of D-serine leads to a slight but not significant increase of the DISC1 levels in the lysates compared with control (Figs. 5A and 5B). However, exogenous D-serine application significantly increases the amount of DISC1 that co-precipitates with  $\alpha$ -SR (Figs. 5A and 5C), suggesting enhancement of SR-DISC1 interactions. This increase is blocked by co-application of 7-CK. In contrast, exogenous application of glycine along with the glycine transporter inhibitor lithium significantly decreases the amount of DISC1 co-precipitated with  $\alpha$ -SR (Figs. 5A and 5C). Our findings suggest that D-serine enhances neuronal SR-DISC1 interaction through NMDA receptors,

We then examined if D-serine treatment modulates the DISC1-SR agglomerates by immunocytochemistry and confocal microscopy. Exogenous application of D-serine (Figs. 6D–F) markedly increases the number of large DISC1-SR agglomerates in the soma of GABAergic and glutamatergic cortical neurons compared to control (Figs. 6A–C). This increase is blocked by 7-CK, a competitive antagonist at the D-serine/glycine binding site on the NR1 subunit of NMDARs (Figs. 6G–I), but not by exogenous application of glycine with the glycine transporter inhibitor lithium (Figs. 6J–L). Co-treatment of cortical neurons with 7-CK and D-serine blocks the D-serine-induced increase, suggesting increases of DISC1-SR agglomerates through NMDARs. Quantification of the number of large DISC1-SR agglomerates in the soma area (including nucleus) show that exogenous D-serine application significantly increases the number of large DISC1-SR agglomerates ( $P < 0.01$  vs. control), whereas exogenous application of glycine and lithium fails to increase the number of large DISC1-SR agglomerates ( $P < 0.001$  vs. D-serine-treated). Co-treatment of cortical neurons with 7-CK and D-serine blocks the increase ( $P < 0.01$  vs. D-serine-treated). Our findings suggest that D-serine increases the abundance of large DISC1-SR agglomerates through activating NMDA receptors.

To further analyze the association of DISC1 and SR in large agglomerates, we fractionized the triton-soluble supernatant and insoluble pellets from cortical neuronal lysates and examined the levels of DISC1 and SR in both fractions. Western blot analyses show the presence of SR and DISC1 in the insoluble pellet fraction of neuronal lysates (Fig. 7A). In addition, beside the normal form of DISC1, the agglomerated form of DISC1 (~180–200 kDa, most likely dimer) is indeed found in the insoluble pellet fraction, confirming the physiological presence of DISC1-SR agglomerates in neurons (Fig. 7A). Intriguingly, exogenous D-serine application significantly increases the agglomerated form of DISC1 in the insoluble pellet fraction of cortical neuronal lysates (Figs. 7A and 7B,  $P < 0.05$  vs. control), whereas exogenous application of glycine and lithium fails to increase the agglomerated form of DISC1 (Figs. 7A and 7B, #  $P < 0.05$  vs. D-serine-treated). Co-treatment of cortical neurons with 7-CK and D-serine blocks the increase (Fig. 7A and 7B). This further supports our findings that D-serine increases SR-DISC1 interaction and DISC1-SR agglomerates through activating NMDA receptors.

## Discussion

The present study uses *in vitro* cultured cortical neurons to show that neuronal SR interacts and associates with DISC1 agglomerates, which can be modulated by NMDAR activity. Endogenous SR interacts with DISC1 and colocalizes with DISC1 large agglomerates in the soma of cortical neurons and small puncta in the nucleus and dendrites, suggesting the physiological presence of functional SR-DISC1 complexes in cortical neurons. Exogenous D-serine application enhances the interactions of SR with DISC1 and increases the number of large DISC1-SR agglomerates in cortical neurons. Biochemical fractionation assays further confirm the presence of agglomerated form of DISC1 along with SR in the triton-insoluble pellet fraction, which is increased by exogenous D-serine application. Exogenous application of glycine with a glycine transporter inhibitor fails to increase their interactions, large DISC1-SR agglomerates and DISC1 agglomerated form in cortical neurons. This increase by D-serine application is blocked by 7-CK, a competitive inhibitor of NMDARs at

the glycine binding site, suggesting mediation by NMDAR activation. Our findings thus demonstrate that D-serine enhances neuronal SR association with DISC1 and its agglomerates, which can be modulated by NMDAR activation, validating a novel neuronal SR-DISC1 complex responsive to NMDAR activation and providing a molecular mechanism at which pathways implicated in schizophrenia converge.

Both SR and DISC1 play important roles in synaptic and dendritic development in neurons. For example, SR/D-serine modulates glutamatergic synapse stability through interactions with PSD-95 in postsynaptic neurons [20] and are important for dendritic spine formation in neurons. DISC1 regulates glutamatergic synapse formation on GABAergic interneurons through NRG1-ErbB4 signaling in the mature cortex [53] and regulates spine formation through its interactions with Kal7 in glutamatergic neurons [54]. In addition, DISC1 controls dendrite morphology by regulating mitochondria dynamics in a complex with Miro, TRAK and mitofusin proteins in neurons [55]. Our findings show that neuronal SR interacts and colocalizes with DISC1 large agglomerates in the soma and small puncta in the nucleus and dendrites, suggesting distinctive physiological functions of SR-DISC1 complex in neurons. One hypothesis about how DISC1 modulates its ability to interact with different proteins and carry out many functions points to DISC1's potential for self multimerization. For example, DISC1 can form large species and octameric states of DISC1 constructs are necessary for functional interactions with NDEL1. However, the presence of functional DISC1 multimers has yet to be verified *in vivo* [56]. Our results indeed show the presence of agglomerated form of DISC1 (likely dimer) along with SR in the triton-insoluble pellet fraction of cortical lysates. More intriguingly, we observed that almost all of DISC1 puncta colocalize with SR in the soma and nucleus, whereas only about one-third of SR puncta colocalizes with DISC1 agglomerates, suggesting that DISC1 agglomerates may be modulated by SR. Our findings thus suggest that SR-DISC1 interactions may modulate DISC1 and SR signaling and physiological functions in synaptic and dendritic development. In addition, we also observe co-localization of small SR-DISC1 puncta on the nuclear membrane and within the nucleus of neurons. Putative nuclear export signal (NES) sequences have been identified within SR, but a nuclear localization signal (NLS) sequence has not been found [57]. Thus, how SR translocates to the nucleus from the postsynaptic density remains a mystery. DISC1, however, contains possible NLS sequences within its N-terminal domain. Therefore, SR may translocate to and from the nucleus through a SR-DISC protein complex.

SR/D-serine deficiency and mutant DISC1 have been implicated in the pathogenesis of schizophrenia [27–37]. Our findings show that exogenous application of D-serine enhances the interaction of SR with DISC1 and association with DISC1 agglomerates in cortical neurons. This identifies a novel neuronal SR-DISC1 complex responsive to NMDAR activation and provides a molecular mechanism at which pathways implicated in schizophrenia converge. Indeed, D-serine treatment or increasing D-serine production can rescue the schizophrenic symptoms in patients and animal models [33, 35, 58]. SR null mutant mice, which have less than 10% of normal brain D-serine, have schizophrenia-like symptoms and display reduced dendritic spine density that can be partially rescued by chronic D-serine treatment [32, 36, 43]. Mice with genetic mutations of the glycine binding site on NR1 subunit show negative and cognitive symptoms resembling schizophrenia that can be normalized by D-serine treatment [4]. Genetic loss of DAAO activity increases D-

serine production and reverses schizophrenia-like phenotypes in mice [27, 59]. Clinical trials show that oral administration of D-serine improves positive, negative, and cognitive symptoms of schizophrenia correlated with elevated plasma D-serine levels as add-on therapy to typical and atypical antipsychotics [60, 61]. D-serine treatment improves the negative symptoms in individuals at clinically high risk of schizophrenia, supporting D-serine treatment for the prodromal symptoms of schizophrenia [58]. Both SR and DISC1 play an important physiological role in dendritic spine density, which is impaired in schizophrenia patients and animal models [20, 32, 33, 54, 62–71]. Our results indicate that D-serine enhancement of SR-DISC1 interactions may improve the schizophrenic symptoms in patients and animal models partially through modulating dendritic spine formation, providing a rationale and molecular mechanism for D-serine treatment in schizophrenia.

Synaptic and extrasynaptic NMDARs are associated with differential gene expression and have different roles in synaptic plasticity and cell death [5, 72–77]. Some studies have shown that D-serine preferentially gates synaptic NMDARs, whereas glycine preferentially gates extrasynaptic NMDARs at the hippocampal Schaffer Collateral-CA1 region [5, 9]. However, other studies have shown that D-serine and glycine activate synaptic NMDA receptors in a synapse-specific and developmental-regulated manner in the hippocampus [7, 8, 23]. D-serine is the preferred coagonist at hippocampal Schaffer Collateral-CA1 (SC-CA1) mature synapses, whereas glycine is mainly involved at medial perforant path-dentate gyrus (mPP–DG) synapses [23]. Our studies show that D-serine, rather than glycine, enhances the interaction of neuronal SR with DISC1 in cortical neurons, supporting a preferential regulatory role of D-serine in controlling neuronal SR-DISC1 signaling as well as synaptic and dendritic development in cortical neurons. This is likely mediated by synaptic, rather than extrasynaptic, NMDARs. Synaptic NMDARs play crucial roles in many forms of synaptic plasticity, such as LTP and LTD. Therefore, control of synaptic NMDARs may provide a mechanism by which D-serine regulates neuronal DISC1 and SR function.

## Acknowledgments

This work was supported by CHOP Foerderer Grant for Excellence (HL) and NIH grants R21NS072842, R01NS45986 and U54 HD086984 (DL). We thank Ms. Margaret Maronski for cortical neuronal cultures, Dr. Hajime Takano for aid in confocal imaging.

## References

1. Johnson JW and Ascher P, Glycine potentiates the NMDA response in cultured mouse brain neurons. *Nature*, 1987 325(6104): p. 529–31. [PubMed: 2433595]
2. Kleckner NW and Dingledine R, Requirement for glycine in activation of NMDA-receptors expressed in *Xenopus* oocytes. *Science*, 1988 241(4867): p. 835–7. [PubMed: 2841759]
3. Mothet JP, et al., D-serine is an endogenous ligand for the glycine site of the N-methyl-D-aspartate receptor. *Proc Natl Acad Sci U S A*, 2000 97(9): p. 4926–31. [PubMed: 10781100]
4. Labrie V, Lipina T, and Roder JC, Mice with reduced NMDA receptor glycine affinity model some of the negative and cognitive symptoms of schizophrenia. *Psychopharmacology (Berl)*, 2008 200(2): p. 217–30. [PubMed: 18597079]
5. Papouin T, et al., Synaptic and extrasynaptic NMDA receptors are gated by different endogenous coagonists. *Cell*, 2012 150(3): p. 633–46. [PubMed: 22863013]



6. Li YH and Wang J, Membrane insertion of new AMPA receptors and LTP induced by glycine is prevented by blocking NR2A-containing NMDA receptors in the rat visual cortex in vitro. *Curr Neurovasc Res*, 2013 10(1): p. 70–5. [PubMed: 23151080]
7. Rosenberg D, et al., Neuronal D-serine and glycine release via the Asc-1 transporter regulates NMDA receptor-dependent synaptic activity. *J Neurosci*, 2013 33(8): p. 3533–44. [PubMed: 23426681]
8. Mothet JP, Le Bail M, and Billard JM, Time and space profiling of NMDA receptor co-agonist functions. *J Neurochem*, 2015 135(2): p. 210–25. [PubMed: 26088787]
9. Yang Y, et al., Contribution of astrocytes to hippocampal long-term potentiation through release of D-serine. *Proc Natl Acad Sci U S A*, 2003 100(25): p. 15194–9. [PubMed: 14638938]
10. Martineau M, Baux G, and Mothet JP, D-serine signalling in the brain: friend and foe. *Trends Neurosci*, 2006 29(8): p. 481–91. [PubMed: 16806506]
11. Wolosker H, D-serine regulation of NMDA receptor activity. *Sci STKE*, 2006 2006(356): p. pe41. [PubMed: 17033043]
12. Wolosker H, Serine racemase and the serine shuttle between neurons and astrocytes. *Biochim Biophys Acta*, 2011 1814(11): p. 1558–66. [PubMed: 21224019]
13. Labrie V, Clapcote SJ, and Roder JC, Mutant mice with reduced NMDA-NR1 glycine affinity or lack of D-amino acid oxidase function exhibit altered anxiety-like behaviors. *Pharmacol Biochem Behav*, 2009 91(4): p. 610–20. [PubMed: 18940194]
14. Billard JM, D-Amino acids in brain neurotransmission and synaptic plasticity. *Amino Acids*, 2012 43(5): p. 1851–60. [PubMed: 22886346]
15. Campanini B, et al., Serine racemase: a key player in neuron activity and in neuropathologies. *Front Biosci (Landmark Ed)*, 2013 18: p. 1112–28. [PubMed: 23747871]
16. Van Horn MR, Sild M, and Ruthazer ES, D-serine as a gliotransmitter and its roles in brain development and disease. *Front Cell Neurosci*, 2013 7: p. 39. [PubMed: 23630460]
17. Yang Y, et al., Reduced brain infarct volume and improved neurological outcome by inhibition of the NR2B subunit of NMDA receptors by using CP101,606–27 alone and in combination with rTPA in a thromboembolic stroke model in rats. *J Neurosurg*, 2003 98(2): p. 397–403. [PubMed: 12593629]
18. Kim MJ, et al., Differential roles of NR2A- and NR2B-containing NMDA receptors in Ras-ERK signaling and AMPA receptor trafficking. *Neuron*, 2005 46(5): p. 745–60. [PubMed: 15924861]
19. DeVito LM, et al., Serine racemase deletion disrupts memory for order and alters cortical dendritic morphology. *Genes Brain Behav*, 2011 10(2): p. 210–22. [PubMed: 21029376]
20. Lin H, et al., D-Serine and Serine Racemase Are Associated with PSD-95 and Glutamatergic Synapse Stability. *Front Cell Neurosci*, 2016 10: p. 34. [PubMed: 26941605]
21. Balu DT, et al., Serine Racemase and D-serine in the Amygdala Are Dynamically Involved in Fear Learning. *Biol Psychiatry*, 2018 83(3): p. 273–283. [PubMed: 29025687]
22. Sason H, et al., Asc-1 Transporter Regulation of Synaptic Activity via the Tonic Release of d-Serine in the Forebrain. *Cereb Cortex*, 2017 27(2): p. 1573–1587. [PubMed: 26796213]
23. Le Bail M, et al., Identity of the NMDA receptor coagonist is synapse specific and developmentally regulated in the hippocampus. *Proc Natl Acad Sci U S A*, 2015 112(2): p. E204–13. [PubMed: 25550512]
24. Yamada K, et al., Identification of multiple serine racemase (SRR) mRNA isoforms and genetic analyses of SRR and DAO in schizophrenia and D-serine levels. *Biol Psychiatry*, 2005 57(12): p. 1493–503. [PubMed: 15953485]
25. Hashimoto K, et al., Decreased serum levels of D-serine in patients with schizophrenia: evidence in support of the N-methyl-D-aspartate receptor hypofunction hypothesis of schizophrenia. *Arch Gen Psychiatry*, 2003 60(6): p. 572–6. [PubMed: 12796220]
26. Bendikov I, et al., A CSF and postmortem brain study of D-serine metabolic parameters in schizophrenia. *Schizophr Res*, 2007 90(1–3): p. 41–51. [PubMed: 17156977]
27. Labrie V, Wong AH, and Roder JC, Contributions of the D-serine pathway to schizophrenia. *Neuropharmacology*, 2012 62(3): p. 1484–503. [PubMed: 21295046]

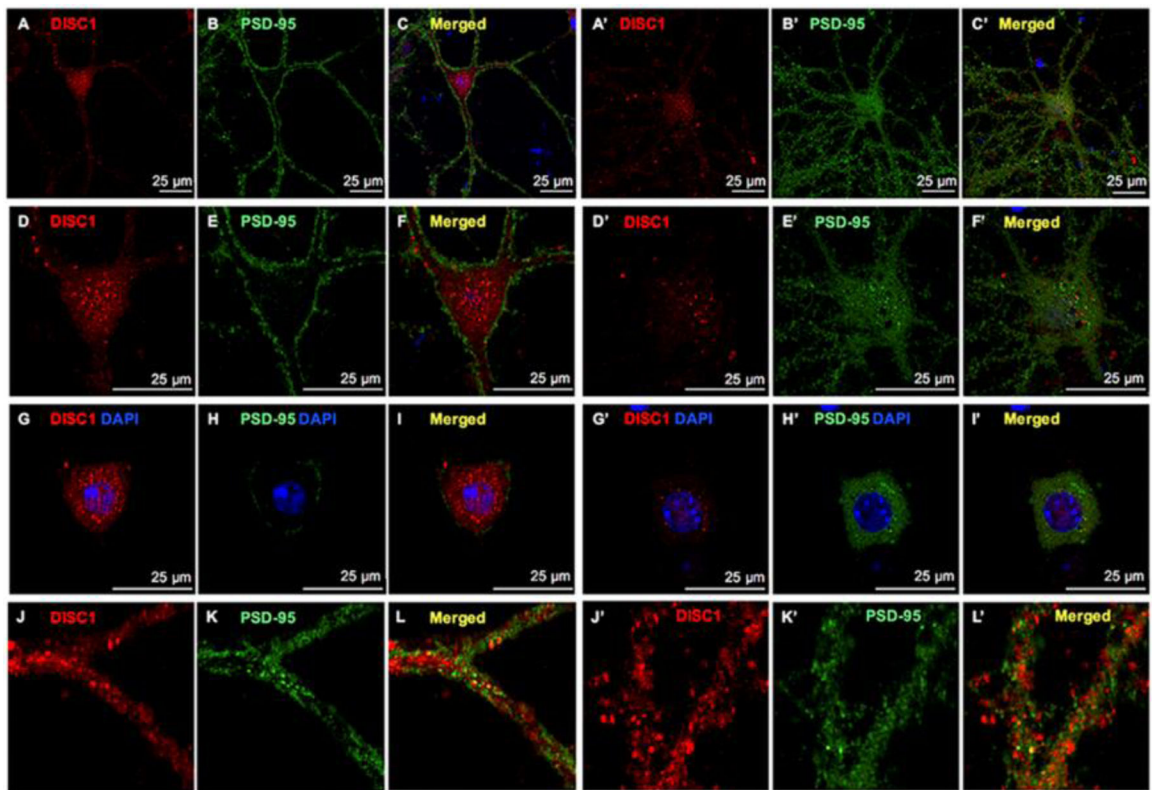
28. Lin H, et al., Cortical parvalbumin GABAergic deficits with alpha7 nicotinic acetylcholine receptor deletion: implications for schizophrenia. *Mol Cell Neurosci*, 2014 61: p. 163–75. [PubMed: 24983521]
29. Lin H, et al., Cortical synaptic NMDA receptor deficits in alpha7 nicotinic acetylcholine receptor gene deletion models: implications for neuropsychiatric diseases. *Neurobiol Dis*, 2014 63: p. 129–40. [PubMed: 24326163]
30. Basu AC, et al., Targeted disruption of serine racemase affects glutamatergic neurotransmission and behavior. *Mol Psychiatry*, 2009 14(7): p. 719–27. [PubMed: 19065142]
31. Balu DT and Coyle JT, Glutamate receptor composition of the post-synaptic density is altered in genetic mouse models of NMDA receptor hypo- and hyperfunction. *Brain Res*, 2011 1392: p. 1–7. [PubMed: 21443867]
32. Balu DT and Coyle JT, Neuronal D-serine regulates dendritic architecture in the somatosensory cortex. *Neurosci Lett*, 2012 517(2): p. 77–81. [PubMed: 22521586]
33. Balu DT and Coyle JT, Chronic D-serine reverses arc expression and partially rescues dendritic abnormalities in a mouse model of NMDA receptor hypofunction. *Neurochem Int*, 2014 75: p. 76–8. [PubMed: 24915645]
34. Hagiwara H, Iyo M, and Hashimoto K, Neonatal disruption of serine racemase causes schizophrenia-like behavioral abnormalities in adulthood: clinical rescue by d-serine. *PLoS One*, 2013 8(4): p. e62438. [PubMed: 23630632]
35. Ma TM, et al., Pathogenic disruption of DISC1-serine racemase binding elicits schizophrenia-like behavior via D-serine depletion. *Mol Psychiatry*, 2013 18(5): p. 557–67. [PubMed: 22801410]
36. Balu DT, et al., The NMDA receptor co-agonists, D-serine and glycine, regulate neuronal dendritic architecture in the somatosensory cortex. *Neurobiol Dis*, 2012 45(2): p. 671–82. [PubMed: 22024716]
37. Balu DT and Coyle JT, The NMDA receptor ‘glycine modulatory site’ in schizophrenia: D-serine, glycine, and beyond. *Curr Opin Pharmacol*, 2015 20: p. 109–15. [PubMed: 25540902]
38. Kartvelishvily E, et al., Neuron-derived D-serine release provides a novel means to activate N-methyl-D-aspartate receptors. *J Biol Chem*, 2006 281(20): p. 14151–62. [PubMed: 16551623]
39. Wolosker H, et al., D-amino acids in the brain: D-serine in neurotransmission and neurodegeneration. *FEBS J*, 2008 275(14): p. 3514–26. [PubMed: 18564180]
40. Miya K, et al., Serine racemase is predominantly localized in neurons in mouse brain. *J Comp Neurol*, 2008 510(6): p. 641–54. [PubMed: 18698599]
41. Benneyworth MA, et al., Cell selective conditional null mutations of serine racemase demonstrate a predominate localization in cortical glutamatergic neurons. *Cell Mol Neurobiol*, 2012 32(4): p. 613–24. [PubMed: 22362148]
42. Ehmsen JT, et al., D-serine in glia and neurons derives from 3-phosphoglycerate dehydrogenase. *J Neurosci*, 2013 33(30): p. 12464–9. [PubMed: 23884950]
43. Balu DT, et al., D-serine and serine racemase are localized to neurons in the adult mouse and human forebrain. *Cell Mol Neurobiol*, 2014 34(3): p. 419–35. [PubMed: 24436034]
44. Martineau M, Parpura V, and Mothet JP, Cell-type specific mechanisms of D-serine uptake and release in the brain. *Front Synaptic Neurosci*, 2014 6: p. 12. [PubMed: 24910611]
45. Kim PM, et al., Serine racemase: activation by glutamate neurotransmission via glutamate receptor interacting protein and mediation of neuronal migration. *Proc Natl Acad Sci U S A*, 2005 102(6): p. 2105–10. [PubMed: 15684087]
46. Fujii K, et al., Serine racemase binds to PICK1: potential relevance to schizophrenia. *Mol Psychiatry*, 2006 11(2): p. 150–7. [PubMed: 16314870]
47. Hikida T, et al., Modulation of D-serine levels in brains of mice lacking PICK1. *Biol Psychiatry*, 2008 63(10): p. 997–1000. [PubMed: 18191108]
48. Ma TM, et al., Serine racemase regulated by binding to stargazin and PSD-95: potential N-methyl-D-aspartate-alpha-amino-3-hydroxy-5-methyl-4-isoxazolepropionic acid (NMDA-AMPA) glutamate neurotransmission cross-talk. *J Biol Chem*, 2014 289(43): p. 29631–41. [PubMed: 25164819]
49. Xia M, et al., DISC1, astrocytes and neuronal maturation: a possible mechanistic link with implications for mental disorders. *J Neurochem*, 2016 138(4): p. 518–24. [PubMed: 27187935]

50. Lin H, et al., Axonal alpha7 nicotinic ACh receptors modulate presynaptic NMDA receptor expression and structural plasticity of glutamatergic presynaptic boutons. *Proc Natl Acad Sci U S A*, 2010 107(38): p. 16661–6. [PubMed: 20817852]
51. Zhai J, et al., HoxB2 binds mutant SOD1 and is altered in transgenic model of ALS. *Hum Mol Genet*, 2005 14(18): p. 2629–40. [PubMed: 16079151]
52. Leliveld SR, et al., Insolubility of disrupted-in-schizophrenia 1 disrupts oligomer-dependent interactions with nuclear distribution element 1 and is associated with sporadic mental disease. *J Neurosci*, 2008 28(15): p. 3839–45. [PubMed: 18400883]
53. Seshadri S, et al., Interneuronal DISC1 regulates NRG1-ErbB4 signalling and excitatory-inhibitory synapse formation in the mature cortex. *Nat Commun*, 2015 6: p. 10118. [PubMed: 26656849]
54. Hayashi-Takagi A, et al., Disrupted-in-Schizophrenia 1 (DISC1) regulates spines of the glutamate synapse via Rac1. *Nat Neurosci*, 2010 13(3): p. 327–32. [PubMed: 20139976]
55. Norkett R, et al., DISC1-dependent Regulation of Mitochondrial Dynamics Controls the Morphogenesis of Complex Neuronal Dendrites. *J Biol Chem*, 2016 291(2): p. 613–29. [PubMed: 26553875]
56. Soares DC, et al., DISC1: Structure, Function, and Therapeutic Potential for Major Mental Illness. *ACS Chem Neurosci*, 2011 2(11): p. 609–632. [PubMed: 22116789]
57. Kolodney G, et al., Nuclear compartmentalization of serine racemase regulates d-serine production. IMPLICATIONS FOR N-METHYL-d-ASPARTATE (NMDA) RECEPTOR ACTIVATION. *J Biol Chem*, 2016 291(6): p. 2630. [PubMed: 26851299]
58. Kantrowitz JT, et al., D-serine for the treatment of negative symptoms in individuals at clinical high risk of schizophrenia: a pilot, double-blind, placebo-controlled, randomised parallel group mechanistic proof-of-concept trial. *Lancet Psychiatry*, 2015 2(5): p. 403–12. [PubMed: 26360284]
59. Labrie V, et al., Genetic loss of D-amino acid oxidase activity reverses schizophrenia-like phenotypes in mice. *Genes Brain Behav*, 2010 9(1): p. 11–25. [PubMed: 19751394]
60. Sacchi S, et al., D-amino acid oxidase inhibitors as a novel class of drugs for schizophrenia therapy. *Curr Pharm Des*, 2013 19(14): p. 2499–511. [PubMed: 23116391]
61. Kantrowitz JT, et al., High dose D-serine in the treatment of schizophrenia. *Schizophr Res*, 2010 121(1–3): p. 125–30. [PubMed: 20541910]
62. Costa E, et al., Dendritic spine hypoplasticity and downregulation of reelin and GABAergic tone in schizophrenia vulnerability. *Neurobiol Dis*, 2001 8(5): p. 723–42. [PubMed: 11592844]
63. Garey LJ, et al., Reduced dendritic spine density on cerebral cortical pyramidal neurons in schizophrenia. *J Neurol Neurosurg Psychiatry*, 1998 65(4): p. 446–53. [PubMed: 9771764]
64. Glantz LA and Lewis DA, Decreased dendritic spine density on prefrontal cortical pyramidal neurons in schizophrenia. *Arch Gen Psychiatry*, 2000 57(1): p. 65–73. [PubMed: 10632234]
65. Glantz LA and Lewis DA, Dendritic spine density in schizophrenia and depression. *Arch Gen Psychiatry*, 2001 58(2): p. 203.
66. Glausier JR and Lewis DA, Dendritic spine pathology in schizophrenia. *Neuroscience*, 2013 251: p. 90–107. [PubMed: 22546337]
67. Hill JJ, Hashimoto T, and Lewis DA, Molecular mechanisms contributing to dendritic spine alterations in the prefrontal cortex of subjects with schizophrenia. *Mol Psychiatry*, 2006 11(6): p. 557–66. [PubMed: 16402129]
68. Kolluri N, et al., Lamina-specific reductions in dendritic spine density in the prefrontal cortex of subjects with schizophrenia. *Am J Psychiatry*, 2005 162(6): p. 1200–2. [PubMed: 15930070]
69. Konopaske GT, et al., Prefrontal cortical dendritic spine pathology in schizophrenia and bipolar disorder. *JAMA Psychiatry*, 2014 71(12): p. 1323–31. [PubMed: 25271938]
70. Moyer CE, Shelton MA, and Sweet RA, Dendritic spine alterations in schizophrenia. *Neurosci Lett*, 2015 601: p. 46–53. [PubMed: 25478958]
71. Sweet RA, et al., Reduced dendritic spine density in auditory cortex of subjects with schizophrenia. *Neuropsychopharmacology*, 2009 34(2): p. 374–89. [PubMed: 18463626]
72. Parsons MP and Raymond LA, Extrasynaptic NMDA receptor involvement in central nervous system disorders. *Neuron*, 2014 82(2): p. 279–93. [PubMed: 24742457]

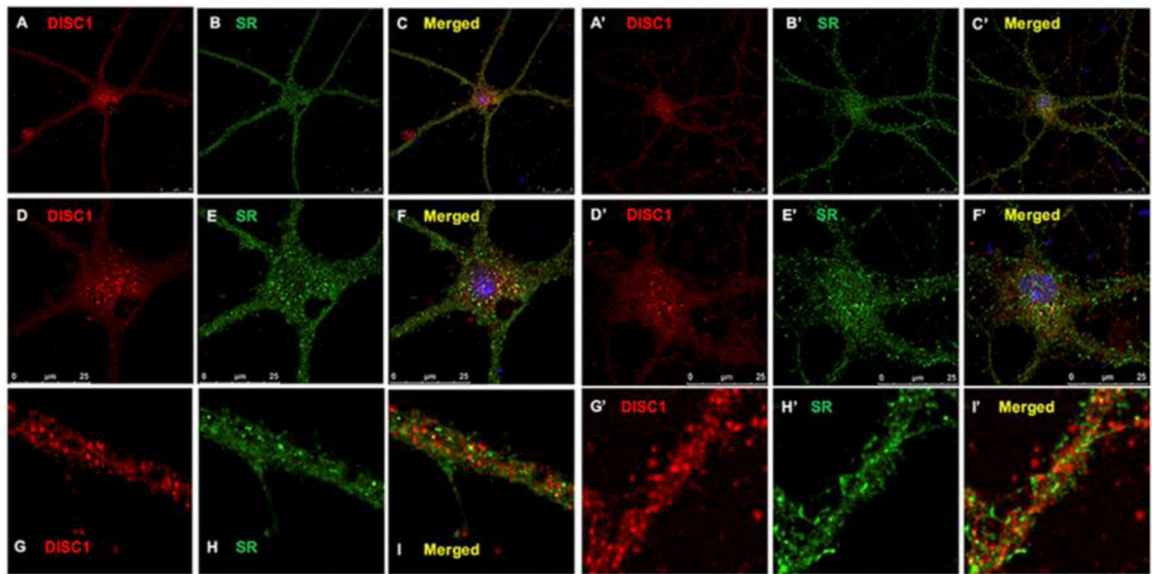
73. Gladding CM and Raymond LA, Mechanisms underlying NMDA receptor synaptic/extrasynaptic distribution and function. *Mol Cell Neurosci*, 2011 48(4): p. 308–20. [PubMed: 21600287]
74. Hardingham GE and Bading H, Synaptic versus extrasynaptic NMDA receptor signalling: implications for neurodegenerative disorders. *Nat Rev Neurosci*, 2010 11(10): p. 682–96. [PubMed: 20842175]
75. Karpova A, et al., Encoding and transducing the synaptic or extrasynaptic origin of NMDA receptor signals to the nucleus. *Cell*, 2013 152(5): p. 1119–33. [PubMed: 23452857]
76. Kaufman AM, et al., Opposing roles of synaptic and extrasynaptic NMDA receptor signaling in cocultured striatal and cortical neurons. *J Neurosci*, 2012 32(12): p. 3992–4003. [PubMed: 22442066]
77. Meunier CN, et al., D-Serine and Glycine Differentially Control Neurotransmission during Visual Cortex Critical Period. *PLoS One*, 2016 11(3): p. e0151233. [PubMed: 27003418]

### Highlights

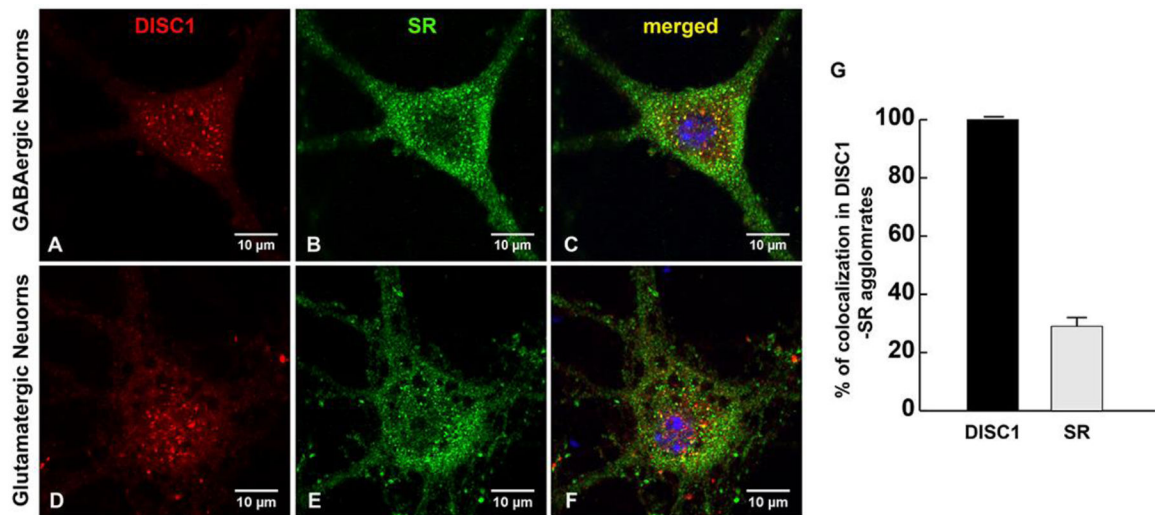
- Serine racemase (SR) interacts with Disrupted-In-Schizophrenia-1 (DISC1) in cortical neurons.
- SR colocalizes DISC1 in the soma, dendrites and nucleus of cortical neurons as large agglomerates and small puncta.
- D-serine enhances SR interaction with DISC1 through NMDAR activation in cortical neurons.
- D-serine increases the abundance of DISC1-SR large agglomerates in the soma of cortical neurons through NMDAR activation.
- D-serine increases the levels of DISC1 agglomerated form in the triton-insoluble pellet fraction of cortical neurons through NMDAR activation.
- These findings validate a novel neuronal SR-DISC1 complex responsive to NMDAR activation and may provide a molecular mechanism by which pathways implicated in schizophrenia converge.



**Figure 1. DISC1 distributes as large agglomerates and small puncta in cortical neurons.** Confocal images of DISC1 (red immunofluorescence), PSD-95 (green immunofluorescence) and merged images with DAPI-stained nucleus showing that DISC1 appears as large agglomerates in the soma and small puncta in the nucleus and dendrites of cortical glutamatergic (A-L) and GABAergic neurons (A'-L'). Scale bars as indicated.

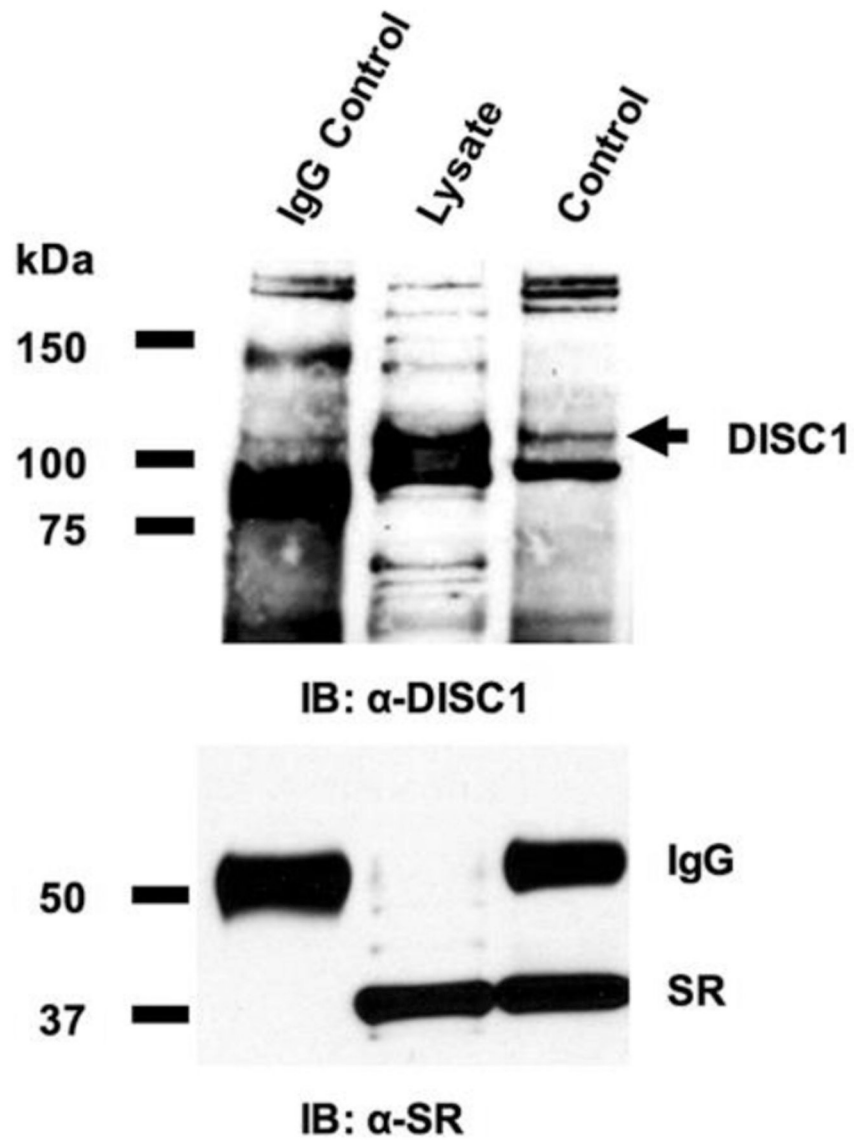


**Figure 2. SR associates with DISC1 large agglomerates and small puncta in cortical neurons.** Confocal images of DISC1 (red immunofluorescence), SR (green immunofluorescence) and merged images with DAPI-stained nucleus showing colocalization of SR with DISC1 large agglomerates in the soma and small puncta in the nucleus and dendrites of cortical glutamatergic (A-L) and GABAergic neurons (A'-L'). Scale bars as indicated.



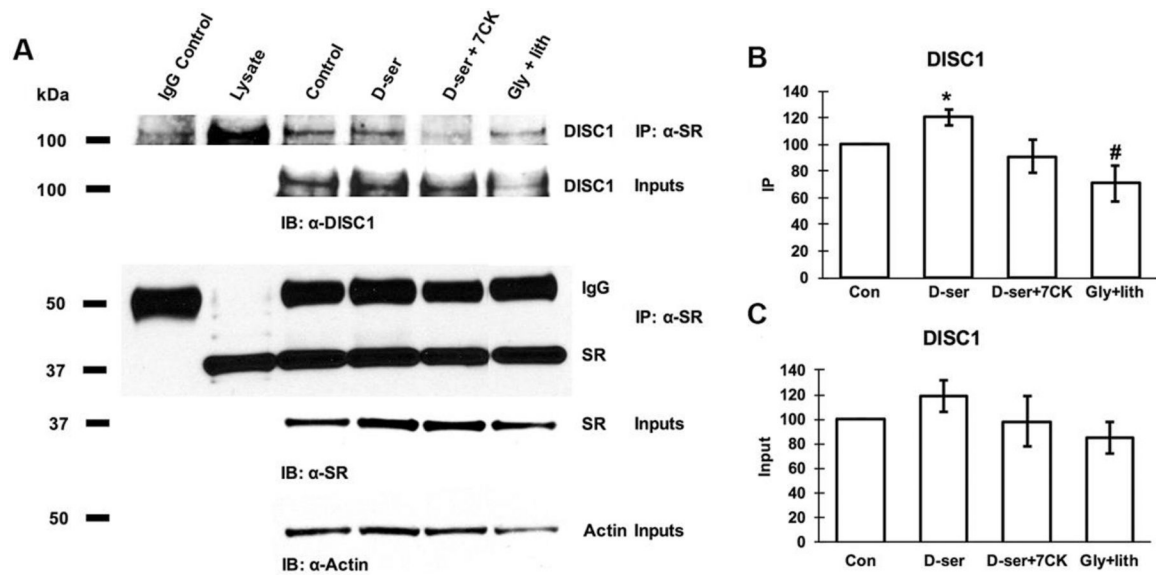
**Figure 3. A small portion of SR puncta colocalizes with DISC1 agglomerates whereas all DISC1 agglomerates contain SR in the soma of cortical neurons.** Confocal images of DISC1 (red immunofluorescence), SR (green immunofluorescence) and merged images with DAPI-stained nucleus showing almost all DISC1 agglomerates colocalize with SR puncta, whereas only a small portion of SR puncta colocalize with DISC1 agglomerates in the soma and nucleus of cortical GABAergic (A-C) and glutamatergic neurons (D-F). DISC1-SR puncta are also observed on the nuclear membranes of cortical neurons (C, F). G. Quantification analysis of percentage of DISC1 and SR colocalization with DISC1-SR agglomerates in the soma and nucleus of cortical neurons (n=9 neurons from 3 different experiments). Scale bars as indicated.



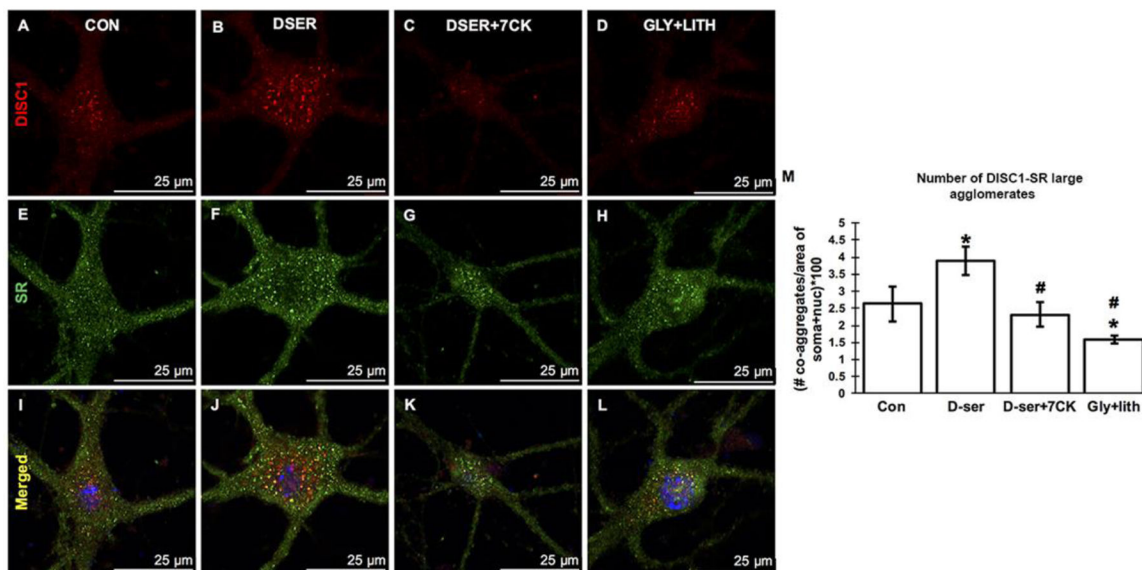


**Figure 4. SR associates with DISC1 in cortical neuronal lysates.**

In normal cortical neurons, co-immunoprecipitation (IP) of endogenous DISC1 with SR antibody in cortical neuronal lysates was observed, but co-precipitation with normal IgG was not.

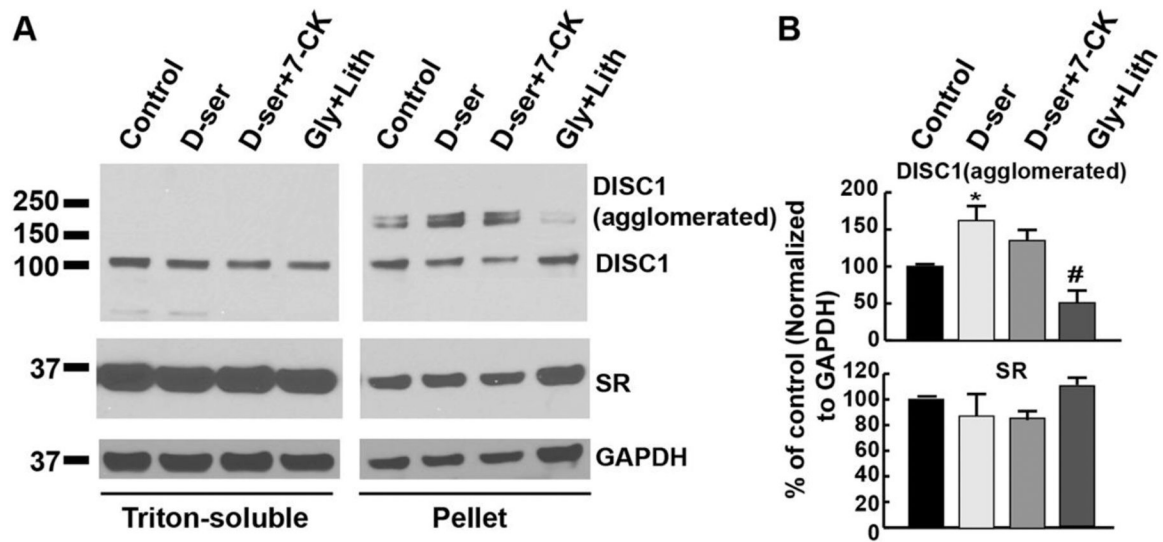


**Figure 5. D-serine enhances SR-DISC1 interaction in cortical neurons through NMDA receptors.** (A) Coimmunoprecipitation of endogenous DISC1 with SR antibody in cortical neuronal lysates from cultures treated with vehicle, D-serine (50 $\mu$ M), D-serine (50 $\mu$ M) + 7-CK (50 $\mu$ M), glycine (50 $\mu$ M) + lithium (100 $\mu$ M) for 24 hrs. Upper panel: Co-immunoprecipitation assays of cortical lysates (250  $\mu$ g each lane); Lower panel: Western blot analysis of input levels in cortical lysates (15 $\mu$ g each lane). Graphs show quantification analysis of the inputs (B) and co-precipitated DISC1 with  $\alpha$ -SR antibody (C) in the cortical lysates. (\*  $p < 0.05$  vs. control, #  $p < 0.05$  vs. D-serine-treated;  $t$ -test,  $n = 4$  different experiments).



**Figure 6. D-serine increases the abundance of DISC1-SR large agglomerates in cortical neurons through NMDA receptors.**

Confocal images of DISC1 (red immunofluorescence), SR (green immunofluorescence) and merged images with DAPI-stained nucleus in cortical neurons from control (A-C), D-serine-treated (D-F), D-serine+7-CK-treated (G-I) and glycine+lithium-treated (J-L) cortical cultures. Scale bars as indicated. M, Quantification of the number of large somatic DISC1-SR agglomerates in cortical neurons from control, D-serine-treated, D-serine+7-CK-treated and glycine+lithium-treated cortical cultures (\*\*P<0.01 vs. control, ## P<0.01 ### P<0.001 vs. D-serine-treated; *t*-test, n=10–12 neurons from 3 different experiments).



**Figure 7. D-serine increases the levels of DISC1 agglomerated form in the insoluble pellet fraction of cortical neuronal lysates.**

(A) Western blot analysis of DISC1 and SR levels in the fractions of triton-soluble supernatant and insoluble pellet from cortical neuronal cultures treated with vehicle, D-serine (50 $\mu$ M), D-serine (50 $\mu$ M) + AP5 (50 $\mu$ M), D-serine (50 $\mu$ M) + 7-CK (50 $\mu$ M), glycine (50 $\mu$ M) + lithium (100 $\mu$ M) for 24 hrs. Upper panel: DISC1 levels in the fractions of triton-soluble supernatant and insoluble pellet (15  $\mu$ g each lane); Lower panel: SR levels in the fractions of triton-soluble supernatant and insoluble pellet (15 $\mu$ g each lane). (B) Graphs show quantification analysis of the agglomerated form of DISC1 (upper panel) and SR (lower panel) in the triton-insoluble pellet fraction of cortical neuronal lysates (\* P<0.05 vs. control, # P<0.05 vs. D-serine-treated, *t*-test, n=3 different experiments).