

Draft Genome Assembly and Population Genetics of an Agricultural Pollinator, the Solitary Alkali Bee (*Halictidae: Nomia melanderi*)

Karen M. Kapheim,^{*,†,1} Hailin Pan,^{*,§,**} Cai Li,^{††} Charles Blatti III,^{**} Brock A. Harpur,^{§§} Panagiotis Ioannidis,^{***} Beryl M. Jones,^{†††} Clement F. Kent,^{***} Livio Ruzzante,^{§§§,****} Laura Sloofman,^{**} Eckart Stolle,^{††††} Robert M. Waterhouse,^{§§§,****} Amro Zayed,^{***} Guojie Zhang,^{*,§,**} and William T. Wcislo[†]

*Department of Biology, Utah State University, Logan, UT 84322, [†]Smithsonian Tropical Research Institute, Panama City, Republic of Panama, [‡]State Key Laboratory of Genetic Resources and Evolution, Kunming Institute of Zoology, Chinese Academy of Sciences, 650223, Kunming, China, [§]China National Genebank, BGI-Shenzhen, 518083, Shenzhen, Guangdong, China, ^{**}Centre for Social Evolution, Department of Biology, Universitetsparken 15, University of Copenhagen, DK-2100, Copenhagen, Denmark, ^{††}The Francis Crick Institute, London NW1 1AT, United Kingdom, ^{†††}Carl R. Woese Institute for Genomic Biology, and ^{††††}Program in Ecology, Evolution, and Conservation Biology, University of Illinois at Urbana-Champaign, Urbana, IL 61801, ^{§§}Department of Entomology, Purdue University, W. Lafayette, IN, 47907, ^{***}Foundation for Research and Technology Hellas, Institute of Molecular Biology and Biotechnology, 70013 Vassilika Vouton, Heraklion, Greece, ^{†††}Department of Biology, York University, Toronto, Ontario, M3J 1P3, Canada, ^{§§§}Swiss Institute of Bioinformatics, 1015 Lausanne, Switzerland, ^{****}Department of Ecology and Evolution, University of Lausanne, 1015 Lausanne, Switzerland, and ^{††††}Institute of Biology, Martin-Luther-University Halle-Wittenberg, 06120 Halle, Germany

ORCID IDs: 0000-0002-8140-7712 (K.M.K.); 0000-0001-6785-98620000 (H.P.); 0001-8722-272X (B.A.H.); 0000-0003-2925-0807 (B.M.J.); 0000-0003-4994-0098 (C.F.K.); 0000-0002-8693-8678 (L.R.); 0000-0001-7638-4061 (E.S.); 0000-0003-4199-9052 (R.M.W.); 0000-0003-3233-4585 (A.Z.); 0000-0001-6860-1521 (G.Z.)

ABSTRACT Alkali bees (*Nomia melanderi*) are solitary relatives of the halictine bees, which have become an important model for the evolution of social behavior, but for which few solitary comparisons exist. These ground-nesting bees defend their developing offspring against pathogens and predators, and thus exhibit some of the key traits that preceded insect sociality. Alkali bees are also efficient native pollinators of alfalfa seed, which is a crop of major economic value in the United States. We sequenced, assembled, and annotated a high-quality draft genome of 299.6 Mbp for this species. Repetitive content makes up more than one-third of this genome, and previously uncharacterized transposable elements are the most abundant type of repetitive DNA. We predicted 10,847 protein coding genes, and identify 479 of these undergoing positive directional selection with the use of population genetic analysis based on low-coverage whole genome sequencing of 19 individuals. We found evidence of recent population bottlenecks, but no significant evidence of population structure. We also identify 45 genes enriched for protein translation and folding, transcriptional regulation, and triglyceride metabolism evolving slower in alkali bees compared to other halictid bees. These resources will be useful for future studies of bee comparative genomics and pollinator health research.

KEYWORDS

solitary bee
alternative
pollinators
transposable
elements
population
genetics
sociogenomics

The comparative method is required for sociogenomics research, which aims to explain how social behavior evolves from a molecular perspective within the context of Darwinian evolution (Robinson *et al.* 2005). Eusociality is a special form of social behavior in animals that involves extreme levels of cooperation at the level of the group, manifest as queens and workers who distribute tasks related to reproduction, brood

care, nest maintenance, and defense within a colony (Wilson 1971). A large amount of comparative genomics research has focused on the insect order Hymenoptera, because ants, bees, and wasps display remarkable variation in social organization, and they represent at least five independent origins of eusociality in the past 200 million years (Danforth *et al.* 2013; Branstetter *et al.* 2017). The comparative method

is most powerful for understanding social evolution when it includes closely related species that are representative of the solitary ancestor from which eusociality arose (Rehan and Toth 2015). However, the rate at which genomic resources have become available for social Hymenoptera has far out-paced that for solitary species. Genome assemblies are publicly available for just three solitary bees and no solitary vespid wasps, compared to over 30 reference genomes currently available for social bees, wasps, and ants (Branstetter *et al.* 2018). This is in stark disproportion to the species that express solitary behavior among bees and wasps, most of which lead solitary lifestyles (Wcislo and Fewell 2017).

Alkali bees (*Nomia melanderi*) belong to the subfamily Nomiinae (Halictidae), a taxon composed of species that are solitary, though some express communal behavior and other forms of social tolerance (Wcislo and Engel 1996). The subfamily is the sister clade to the Halictinae, which includes both solitary and social lineages (Danforth *et al.* 2008). The alkali bees may be representative of the solitary ancestor from which eusociality likely evolved within the bee family Halictidae, and provide important phylogenetic context to comparative genomics (Brady *et al.* 2006; Gibbs *et al.* 2012). Alkali bees also possess several of the characteristic traits thought to be important in the ancestor of social halictids, including nest defense and other forms of maternal care (Batra and Bohart 1969; Batra 1970, 1972) (Figure 1A). As such, this species has become an important model for testing hypotheses for the origins of eusociality, and has provided meaningful insight into the reproductive physiology of solitary bees (Kapheim 2017; Kapheim and Johnson 2017a, 2017b). Development of genomic resources for this species will enable additional hypothesis testing regarding the solitary antecedents of eusociality in this family, and insects in general.

The development of genomic resources for alkali bees will also have practical and applied benefits. Alkali bees are native pollinators of alfalfa seed, which is a multi-billion dollar industry in the United States, accounting for one-third of the \$14 billion value attributed to U.S. bee-pollinated crops (Van Deynze *et al.* 2008; U.S. Department of Agriculture 2014). With issues of honey bee health and colony loss over the last decade, increased attention has been placed on the need to find alternative pollinators for many of our most important crops. Aggregations of alkali bees have been sustainably managed alongside alfalfa fields in southeastern Washington state for several decades (Cane 2008), and they are more effective pollinators of this crop than honey bees (Batra 1976; Cane 2002). Moreover, as a naturally aggregating native species, they are less costly pollinators than alfalfa leaf-cutter bees (*Megachile rotundata*), which must be purchased commercially (James 2011). Genomic resources have been an invaluable resource for the study of honey bee health and management, and are thus likely to benefit this important pollinator as well.

Here we present a draft genome assembly and annotation for *N. melanderi*, along with initial genomic comparisons with other Hymenoptera, a description of transcription factor binding sites, and population genetic analyses based on resequencing of individuals from throughout the southeastern Washington population. These resources

will provide an important foundation for future research in sociogenomics and pollinator health.

MATERIALS AND METHODS

Genome sequencing and assembly

Sample collections: All of the bees used for sequencing were collected from nesting aggregations in and around Touchet, Washington (USA) with permission from private land owners in June 2014 or June 2015. Samples were collected from two sites approximately 8 km apart, separated by agricultural land dominated by alfalfa seed. Dispersal distance is unknown for this species, but adult females are known to forage up to 3 miles from their nests (Stephen 2003). Adult males and females were captured live, and flash frozen in liquid nitrogen. They were transported in a dry nitrogen shipper, and then stored at -80° until nucleic acid extraction.

DNA and RNA isolation: For genome sequencing, we isolated genomic DNA from individual males in three separate reactions targeting either the head or one half of a thorax. We used a Qiagen MagAttract kit, following the manufacturer's protocol, with two 200 μ l elutions in AE buffer. We isolated RNA from three adult females using a Qiagen RNeasy kit, following the manufacturer's protocol, eluting once in 50 μ l of water. We extracted RNA from the head and rest of the body separately for each female. For whole genome resequencing, we isolated genomic DNA of 18 adult females and one male from half of a thorax with a Qiagen MagAttract kit, as above. DNA was quantified with a dsDNA high sensitivity Qubit reaction, and quality was assessed on an agarose gel. RNA was quantified on a Nanodrop spectrophotometer, and quality was assessed with a Bioanalyzer.

Sequencing: All library preparation and sequencing was performed at the Roy J. Carver Biotechnology Center at University of Illinois at Urbana-Champaign. Two shotgun libraries (350-450 bp, 500-700 bp) were prepared from the DNA of a single haploid male with the Hyper Kapa Library Preparation kit (Kapa Biosystems). Three mate-pair libraries (3-5 kb, 8-10 kb, 15-20 kb) were constructed from DNA pooled from five individual males using the Nextera Mate Pair Library Sample Prep kit (Illumina, CA), followed by the TruSeq DNA Sample Prep kit. A single RNA library was constructed from pooled RNA from the six female tissue samples with the TruSeq Stranded mRNA Library Construction kit (Illumina, CA).

DNA libraries were quantitated by qPCR and sequenced on a HiSeq2500 for 251 cycles from each end of the fragments using a TruSeq Rapid SBS kit version 2. Shotgun libraries were sequenced on a single lane, and mate-pair libraries were pooled and sequenced on a single lane. RNA libraries were sequenced on a single lane for 161 cycles from each end of the fragments. Fastq files were generated and demultiplexed with the bcl2fastq v1.8.4 Conversion Software (Illumina).

Genome assembly: The DNA shotgun and mate-pair library sequencing generated a total of 593,526,700 reads. After adapter trimming, these reads were filtered for quality (Phred $64 < 7$) and excessive (≥ 10) Ns. We removed PCR duplicates from read pairs.

We used SOAPdenovo 2 with default parameters for genome assembly. We began by constructing contigs from the shotgun library reads split into kmers, which were used to construct a de Bruijn graph. Filtered reads were then realigned onto the contigs, and used to construct scaffolds based on shared paired-end relationships between contigs. We then closed gaps in the assembly using information from paired-end reads that mapped to a unique contig and a gap region.

Copyright © 2019 Kapheim *et al.*

doi: <https://doi.org/10.1534/g3.118.200865>

Manuscript received November 5, 2018; accepted for publication January 12, 2019; published Early Online January 14, 2019.

This is an open-access article distributed under the terms of the Creative Commons Attribution 4.0 International License (<http://creativecommons.org/licenses/by/4.0/>), which permits unrestricted use, distribution, and reproduction in any medium, provided the original work is properly cited.

Supplemental material available at Figshare: <https://doi.org/10.25387/g3.7296281>.

¹Corresponding author: Department of Biology, Utah State University, 5305 Old Main Hill, Logan, UT 84322-5305, E-mail: karen.kapheim@usu.edu

BUSCO assessment of assembly completeness: The genome assembly completeness in terms of expected gene content was quantified using the Benchmarking Universal Single-Copy Ortholog (BUSCO) assessment tool (Waterhouse *et al.* 2018) for *N. melanderi* and seven other Apoidea species. Assembly completeness assessments employed BUSCOv3.0.3 with Augustus 3.3 (Stanke *et al.* 2006), HMMER 3.1b2 (Finn *et al.* 2011), and BLAST+ 2.7.1 (Camacho *et al.* 2009) (Camacho *et al.* 2009), using both the hymenoptera_odb9 and the insecta_odb9 BUSCO lineage datasets and the Augustus species parameter 'honeybee1'.

Genome annotation

Gene annotation: We predicted gene models based on homology and *de novo* methods. Results were integrated with GLEAN (Elsik *et al.* 2014). Homology based gene prediction used the gene models of four species (*Apis mellifera*, *Acromyrmex echinator*, *Drosophila melanogaster*, and *Homo sapiens*). We used TBLASTN to gather a non-redundant set of protein sequences, and then selected the most

similar proteins for each candidate protein coding region based on sequence similarity. Short fragments were connected with a custom script (SOLAR), and Genewise (v2.0) (Birney *et al.* 2004) was used to generate the gene structures based on the homology alignments. This generated four gene sets based on homology with four different species.

We used Augustus (Stanke *et al.* 2006) and SNAP (Johnson *et al.* 2008) for *de novo* gene prediction, with parameters trained on 500-1,000 intact genes from the homology-based predictions. We chose genes that were predicted by both programs for the final *de novo* gene set.

The four homology-based gene sets and one *de novo* gene set were integrated to generate a consensus gene set with GLEAN. We then filtered genes affiliated with repetitive DNA and genes whose CDS regions contained more than 30% Ns. Repetitive DNA was identified through annotation of tandem repeats (Tandem Repeats Finder v4.04) (Benson 1999) and transposable elements (TEs). This initial identification of TEs was performed based on homology-based and *de novo*

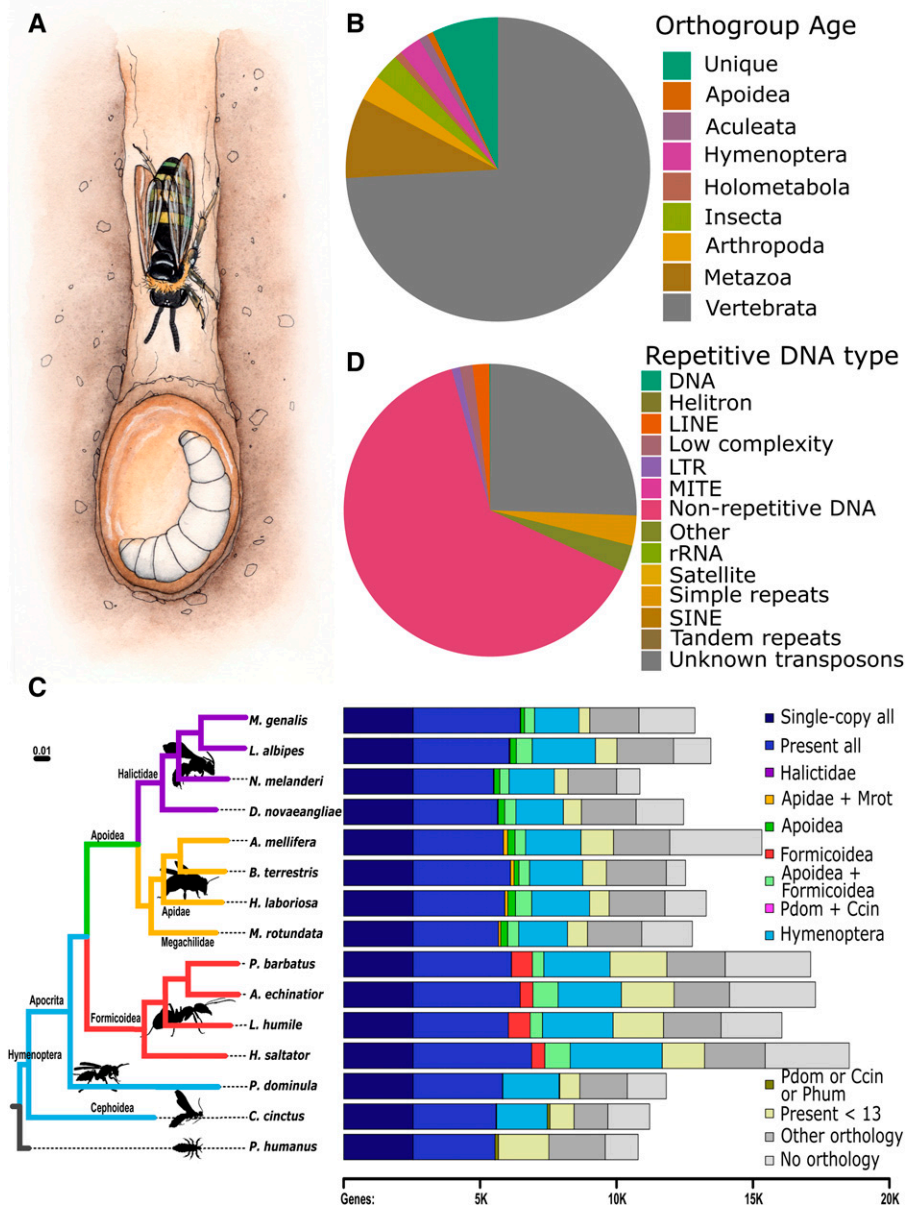


Figure 1 *Nomia melanderi* genome characteristics and comparative context. (A) *N. melanderi* are ground-nesting bees with maternal care. (B) Most of the protein-coding genes belong to OGs that include vertebrates or other metazoans, and are thus widely conserved. (C) Species phylogeny (left) and gene orthology (right). The maximum likelihood 15-species molecular phylogeny estimated from the superalignment of 2,025 single-copy orthologs recovers supported families. Branch lengths represent substitutions per site, all nodes achieved 100% bootstrap support. Right: Total gene counts per species partitioned into categories from single-copy orthologs in all 15 species, or present but not necessarily single-copy in all (*i.e.*, including gene duplications), to lineage-restricted orthologs (Halictidae, Apidae and *M. rotundata*, Apoidea, Formicoidea, Apoidea and Formicoidea, Hymenoptera, specific outgroups), genes showing orthology in less than 13 species (*i.e.*, patchy distributions), genes present in the outgroups (present in *P. domunila* or *C. cinctus*, present in *P. dominula* or *C. Cinctus* or *P. humanus*), and genes with orthologs from other sequenced insect genomes or with no identifiable orthology. The purple Halictidae bar is present but barely visible as only 16 to 32 orthologous genes were assigned to the Halictidae-restricted category. (D) A large proportion of repetitive DNA consists of uncharacterized transposable elements, but all major transposon groups were detected.

predictions. For the homology-based approach, we used RepeatMasker (v3.2.9) and RepeatProteinMask (v3.2.9) (“Smit AFA, Hubley R, Green P: RepeatMasker. Available at: <http://www.repeatmasker.org>. [Accessed April 9, 2013]”) against a custom build of the Repbase library. *De novo* predictions were performed with LTR_FINDER (v1.0.5) (Xu and Wang 2007), PILER (v1.0) (Edgar and Myers 2005), and RepeatScout (v1.0.5) (Price *et al.* 2005). Results were used as an input library for a second run of RepeatMasker.

We used the 571,457,212 reads generated from RNA sequencing to polish the gene set. After filtering, we mapped reads to the genome with TopHat (Trapnell *et al.* 2009), and used Cufflinks (Trapnell *et al.* 2012) to assemble transcripts. Assembled transcripts were then used to predict ORFs. Transcript-based gene models with intact ORFs that had no overlap with the GLEAN gene set were added. GLEAN gene models were replaced by transcript-based gene models with intact ORFs when there was a discrepancy in length or merging of gene models. Transcripts without intact ORFs were used to extend the incomplete GLEAN gene models to find start and stop codons.

Putative gene functions were assigned to genes based on best alignments to the Swiss-Prot database (Release 2013_11) (Bairoch 2004) using BLASTP. We used InterPro databases v32.0 (Zdobnov and Apweiler 2001; Quevillon *et al.* 2005) including Pfam, PRINTS, PROSITE, ProDom, and SMART to identify protein motifs and domains. Gene Ontology terms were obtained from the corresponding InterPro entries.

BUSCO assessment of annotation completeness: Annotated gene set completeness in terms of expected gene content was quantified using the BUSCO assessment tool (Waterhouse *et al.* 2018) for *N. melanderi* and seven other Apoidea species. Gene sets were first filtered to select the single longest protein sequence for any genes with annotated alternative transcripts. Gene set completeness assessments employed BUSCOv3.0.3 with HMMER 3.1b2 (Finn *et al.* 2011), and BLAST+ 2.7.1 (Camacho *et al.* 2009), using both the *hymenoptera_odb9* and the *insecta_odb9* BUSCO lineage datasets.

Transcription factor motif scans: We generated binding scores for 223 representative transcription factor (TF) binding motifs in the *N. melanderi* genome. Motifs representative of TF clusters with at least one ortholog in bees (Kapheim *et al.* 2015) were selected from FlyFactorSurvey (Zhu *et al.* 2011). After masking tandem repeats with Tandem Repeat Finder, we produced normalized genome-wide scoring profiles for each selected TF motif in the genome based on sliding windows of 500 bp with 250 bp overlap. We used the HMM-based motif scoring program Stubb (Sinha *et al.* 2006) with a fixed transition probability of 0.0025 and a background state nucleotide distribution learned from 5 kb regions without coding features of length > 22 kb. We then normalized these motif scores using two different methods. First, we created a “Rank Normalized” matrix, to normalize the window scores across each motif on a scale of 0 (best) to 1 (worst). Second, we created a “G/C Normalized” matrix, by considering each window’s GC content. Motifs with high GC content are likely to produce a high Stubb score in a GC rich window. We thus separated genomic windows into 20 bins of equal size based on GC content, and performed rank-normalization separately within each bin. We next summarized motif scores at the gene level. For each gene, we calculated a score for each motif as $P_{gm} = 1 - (1 - N_{gm})^{W_g}$, where N_{gm} is the best normalized score for motif m among the W_g windows that fall within the regulatory region of the gene g . We defined the regulatory region of the gene in five different ways: *5Kup2Kdown* – 5000 bp upstream to 2000 bp downstream of a gene’s transcription start site (TSS), *5Kup* – 5000 bp upstream of a gene’s TSS, *1Kup* – 1000 bp upstream of a gene’s

TSS, *NearStartSite* – all genomic windows that are closer to the gene’s TSS than any other gene TSS, *GeneTerr* – all genomic windows between the boundary positions of the nearest non-overlapping gene neighbors within at least 5000 bp upstream of the TSS.

We used the results of these target motif scans to check for transcription factor motif enrichment among gene sets of interest (*i.e.*, genes under selection). For each normalization method and regulatory region, we created two motif target gene sets: a “conservative” set that contains only the top 100 genes by normalized score and a more “liberal” set that contains the 800 top genes. Enrichment tests for genes of interest were performed using the one-sided Fisher exact test for each of 1784 motif target sets defined using the two thresholds, both “G/C” and “Rank” normalization procedures, the *1Kup* (likely the core promoter) and *GeneTerr* (likely containing distal enhancers) regulatory region definitions, and each of the representative 223 motifs. Multiple hypothesis test corrections were performed using the Benjamini-Hochberg procedure (Benjamini and Hochberg 1995). For significantly enriched motifs (adjusted- $P < 6E-04$), we determined if an ortholog of the fly transcription factor protein was present in the *N. melanderi* genome using blastp with e-value < $10e-3$ and % identity ≥ 50 .

Transposable element identification: We performed a more detailed *de novo* investigation of transposable elements in the *N. melanderi* genome using raw sequencing reads in a genome assembly-independent approach (Goubert *et al.* 2015). This method uses short reads representing a >1x coverage of the genome for an assembly, which typically is only successful for sequences which are represented as multiple copies (*i.e.*, repeated) within the genome and hence contribute >1x coverage (of their respective repeat family) to the assembly. Consequently, this repeatome assembly represents a qualitative overview of repetitive and transposable elements in the genome and can subsequently be used to quantify each element based on the number of reads mapping to them. It is expected that this approach is less biased than inferring repetitive elements based on the genome assembly, which is limited by the small proportion of reads that span across longer repetitive sequences.

First, we filtered a subset of five million raw reads for mitochondrial contamination to avoid biasing the detection of highly repetitive sequences. This involved aligning reads to the genome assembly with bwa-mem (Li 2013), and evaluating read depth with bedtools (Quinlan and Hall 2010). We identified contigs and scaffolds with high coverage ($\geq 500x$) as potential mitochondrial sequences, based on the assumption that the number of sequenced mitochondrial copies is much higher than that of the nuclear genome. These contigs and scaffolds were further analyzed for sequence similarity (blastn v. 2.2.28+) to the mitogenome of the closest available bee species, *Halictus rubicundus* (KT164656.1). We identified five scaffolds as putatively mitochondrial (scaffold235256, scaffold241193, scaffold252191, scaffold252994, scaffold257806). Reads aligning to these scaffolds were filtered from the analysis.

The remaining reads were used for repeat analysis in five iterations of the transposable element discovery program DnaPipeTE v1.1 (Goubert *et al.* 2015), following Stolle *et al.* (2018). Each iteration used a new set of the same number of reads randomly sampled from the filtered reads. The analysis was repeated for different number of reads to represent a genome sequence assembly length coverage of 0.20x–0.40x in steps of 0.05x. This series of repeat content estimates determines the amount of input data that provides a stable estimate of genomic repeat content, and thus ensures that adequate coverage has been obtained for accurate estimates. The final set of repetitive elements was generated based on 0.30x coverage, using RepeatMasker v4.0.7 and a 10% sequence divergence cut-off. Overlap between repetitive element annotations and genes was detected with bedtools.

Orthology delineation

Orthologous groups (OGs) delineated across 116 insect species were retrieved from OrthoDB v9.1 (Zdobnov *et al.* 2017) to identify orthologs. The OrthoDB orthology delineation procedure employs all-against-all protein sequence alignments to identify all best reciprocal hits (BRHs) between genes from each pair of species. It then uses a graph-based approach that starts with BRH triangulation to build OGs containing all genes descended from a single gene in the last common ancestor of the considered species. The annotated proteins from the genomes of *N. melanderi* were first filtered to select one protein-coding transcript per gene and then mapped to OrthoDB v9.1 at the Insecta level, using all 116 species and an unpublished halictid bee genome (*Megalopta genalis*; K. M. Kapheim *et al.* unpublished) for orthology mapping. The OrthoDB orthology mapping approach uses the same BRH-based procedure as for building OGs, but only allowing proteins from the mapped species to join existing OGs.

Phylogenomic analysis

We reconstructed a molecular species phylogeny from 2,025 universal single-copy orthologs among the protein sequences of 15 insects including *N. melanderi* (Table S1-S2). The protein sequences from each orthogroup were first aligned with Muscle 3.8.31 (Edgar 2004), then trimmed to retain only confidently aligned regions with TrimAl v1.3 (Capella-Gutierrez *et al.* 2009), and then concatenated to form the 15 species superalignment of 688,354 columns. The maximum likelihood phylogeny was then estimated using RAxML 8.0.0 (Stamatakis 2014), with the PROTGAMMAJTT substitution model, setting the body louse (*Pediculus humanus*) as the outgroup species, and performing 100 bootstrap samples to obtain support values.

With these data, we performed a comparative orthology analysis to identify genes with universal, widely shared, or lineage-specific/restricted distributions across the selected species, or with identifiable orthologs from other insect species from OrthoDB v9.1. Ortholog presence, absence, and copy numbers were assessed for all OGs across the 15 species to classify genes according to their orthology profiles. The categories (each mutually exclusive) included: 1) Single-copy in all 15 insect species; 2) Present in all 15 insect species; 3) Halictidae: Present in ≥ 2 Halictidae but none of the other 11 species; 4) Apidae + Mrot: Present in ≥ 2 Apidae and *Megachile rotundata* but none of the other 11 species; 5) Apoidea: Present in ≥ 1 Halictidae, present in ≥ 1 Apidae and *Megachile rotundata* but none of the other 7 species; 6) Formicoidea: Present in ≥ 2 Formicoidea but none of the other 11 species; 7) Apoidea + Formicoidea: Present in ≥ 2 Apoidea, present in ≥ 1 Formicoidea but not in *Polistes dominula* or *Cephus cinctus* or *P. humanus*; 8) Pdom + Ccin: Present in *P. dominula* and *C. cinctus* but none of the other 13 species; 9) Pdom or Ccin or Phum: Present in ≥ 2 of *P. dominula* or *C. cinctus* or *P. humanus* and none of the other 12 species; 10) Hymenoptera: Present in ≥ 2 Hymenoptera and absent from *P. humanus*; 11) Present < 13: Present in < 13 of the 15 species, *i.e.*, a patchy distribution not represented by any other category; 12) Other orthology: Present in any other insect from OrthoDB v9.1; 13) No orthology: No identifiable orthology at the OrthoDB v9.1 Insecta level.

Population genetic analysis

SNP discovery and filtering: We used sequences generated from the 18 females and one male to characterize genetic variants following GATK best practices (<https://software.broadinstitute.org/gatk/best-practices/>). Reads were pre-processed by quality trimming using sickle with default parameters (Joshi and Fass 2011). We then converted paired reads to BAM format and marked adapters with Picard tools ("Picard. <http://picard.sourceforge.net/>. Accessed January 12, 2016").

Reads were aligned to the genome with bwa-mem wrapped through Picard tools (CLIPPING_ATTRIBUTE = XT, CLIPPING_ACTION = 2, INTERLEAVE = true, NON_PF = true). Alignments were then merged with MergeBamAlignment (CLIP_ADAPTERS = false, CLIP_OVERLAPPING_READS = true, INCLUDE_SECONDARY_ALIGNMENTS = true, MAX_INSERTIONS_OR_DELETIONS = -1, PRIMARY_ALIGNMENT_STRATEGY = MostDistant, ATTRIBUTES_TO_RETAIN = XS). PCR duplicates were marked with the function MarkDuplicatesWithMateCigar (OPTICAL_DUPLICATE_PIXEL_DISTANCE = 2500, MINIMUM_DISTANCE = 300). We next identified and realigned around indels using the Picard tools functions RealignerTargetCreator and IndelRealigner.

We performed variant calling in two rounds. The first pass was to generate a high quality SNP set that could be used for base quality recalibration, followed by a second pass of variant calling. For both rounds, we used the HaplotypeCaller function in Picard tools (-variant_index_type LINEAR, -variant_index_parameter 128000, -ERC GVCF), followed by joint genotyping for the 18 females and individual genotyping for the male sample (GenotypeGVCFs). Haplotype caller was run set with ploidy level = 2n for all samples, including the haploid male. The latter was used to identify low-confidence or spurious SNPs that could be filtered from the female calls.

Variant filtering followed the GATK generic recommendations (-filterExpression "QD < 2.0, FS > 60.0, MQ < 40.0, ReadPosRankSum < -8.0, -restrictAllelesTo BIALLELIC). These were further filtered for SNPs identified as heterozygous in the male sample and for which genotypes were missing in any sample (-max-missing-count 0).

This set of high-confidence SNPs was used as input for base quality score recalibration for the 18 females. The second round of variant calling and filtering for these samples followed that of the first round, with the exception that we allowed missing genotypes in up to 8 samples. We then applied a final, more stringent set of filters using vcfTools (Danecek *et al.* 2011) (-min-meanDP 5, -max-missing-count 4, -maf 0.05, -minGQ 9, -minDP 3). This yielded a final set of 412,800 high confidence SNPs used in the downstream analyses (File S1).

Structure analysis: We evaluated the potential for population structure by estimating heterozygosity, relatedness, and Hardy-Weinberg disequilibrium within our samples using vcfTools. We also used ADMIXTURE v.1.3 (Alexander *et al.* 2009) to look for evidence of population structure (N = 18 diploids). We randomly extracted SNPs that were at least 1000bp apart across the genome and ran K = 1-4 for three independent datasets.

SNP function: We identified the functional role (*e.g.*, upstream, synonymous, non-synonymous, etc.) of SNPs using SNPEFF (Cingolani *et al.* 2012) for all SNPs within our data set (N = 412,800).

Genetic diversity: We characterized genetic diversity by evaluating pi and Tajima's D in 10Kb and 1Kb windows with vcfTools (-window-pi, -TajimaD, -site-pi). We mapped gene models to these windows with bedtools intersect, and Tajima's D and pi values were averaged over each gene model using the aggregate function in R (R Core Team 2016). We then calculated the cumulative percentile for pi and Tajima's D for each gene using the ecdf function in R. These percentiles were then multiplied and recalculated. Genes for the joint percentile of pi and Tajima's D that fell in the lowest 5% were considered to be under ongoing positive selection. This allowed us to identify outlier regions which are likely experiencing positive selection relative to the entire genome (Kelley *et al.* 2006). To estimate genetic diversity across the genome in windows, we first calculated coverage at each site within 1Kb

windows across the genome using bedtools coverage. Within each window, we estimated the proportion of sites with at least 5 reads of coverage. We used this value as the denominator to calculate pi within 1Kb windows.

Effective population size and demography: We estimated Ne using SMC++ (Terhorst *et al.* 2017). We randomly selected 4 large scaffolds (>1 Kb) and estimated effective population size of our single *Nomia melanderi* population from 1000 to 100000 years before present. We assumed a single generation per year and a mutation rate of 6.8×10^{-9} (Liu *et al.* 2017). For each scaffold, we created 6 datasets by randomly selecting between 5 and 8 individuals without replacement. We used these files to estimate Ne using the cross-validation for each scaffold.

We evaluated the possibility of recent demographic changes by estimating Tajima's D in 1000bp windows across the genome for all samples (Tajima 1989).

Evolutionary rate analysis

Single copy orthologs were extracted from OGs identified above for *Lasioglossum albipes*, *Dufourea novaengliae*, *M. genalis*, and *N. melanderi*. Peptide alignments were obtained by running GUIDANCE2 (Penn *et al.* 2010) with the PRANK aligner (Löytynoja 2014) and species tree ((Dnov:67.51,(Nmel:58.18,(Mgen:47.03,Lalb:47.03):11.15):9.33); (Branstetter *et al.* 2017)) on each orthogroup. Low scoring residues (scores < 0.5) were masked to N using GUIDANCE2 to mask poor quality regions of each alignment. PAL2NAL (Suyama *et al.* 2006) was used to back-translate aligned peptide sequences to CDS and format alignments for PAML. PAML (Yang 2007) was run to evaluate the likelihood of multiple hypothesized branch models of dN/dS relative to two null models with trees and parameters as follows:

- M0: (Dnov:67.51,(Nmel:58.18,(Mgen:47.03,Lalb:47.03):11.15):9.33); (model = 0, fix_omega = 0, omega = 0.2; all branches same omega)
- M1a: (Dnov:67.51,(Nmel:58.18 #1, (Mgen:47.03,Lalb:47.03):11.15):9.33); (model = 2, fix_omega = 1, omega = 1; neutral evolution for Nmel branch)
- M2a: (Dnov:67.51,(Nmel:58.18 #1,(Mgen:47.03,Lalb:47.03):11.15):9.33); (model = 2, fix_omega = 0, omega = 0.2; Nmel branch different omega)
- M1b: (Dnov:67.51,(Nmel:58.18,(Mgen:47.03 #1,Lalb:47.03):11.15):9.33); (model = 2, fix_omega = 1, omega = 1; neutral evolution for Mgen branch)
- M2b: (Dnov:67.51,(Nmel:58.18,(Mgen:47.03 #1,Lalb:47.03):11.15):9.33); (model = 2, fix_omega = 0, omega = 0.2; Mgen branch different omega)
- M1c: (Dnov:67.51,(Nmel:58.18,(Mgen:47.03,Lalb:47.03 #1):11.15):9.33); (model = 2, fix_omega = 1, omega = 1; neutral evolution for Lalb branch)
- M2c: (Dnov:67.51,(Nmel:58.18,(Mgen:47.03,Lalb:47.03 #1):11.15):9.33); (model = 2, fix_omega = 0, omega = 0.2; Lalb branch different omega)

Orthogroups with $dS > 2$ were removed, and likelihood ratio tests were performed to determine the most likely value of omega for each branch.

Functional Enrichment Tests

We performed all tests of functional enrichment using the GOstats package (Gentleman and Falcon 2013) in R version 3.4.4. We used terms that were significantly enriched ($P < 0.05$) to build word clouds with the R packages tm (Feinerer *et al.* 2008), SnowballC (Bouchet-Valat 2014), and wordcloud (Fellows 2018).

Data Availability

Sequence data are available at NCBI (BioProject PRJNA495036). The genome assembly is available at NCBI (BioProject PRJNA494873). Genetic variants and genotypes are available in VCF format in File S1. TF binding motif scores are in File S2. Repetitive DNA content is in File S3. SNP effects are in File S4. The genome annotation (GFF format) is in File S5. All supplementary tables (Table S1-S8) and files (Files S1-S5) have been deposited at FigShare. Supplemental material available at Figshare: <https://doi.org/10.25387/g3.7296281>.

RESULTS AND DISCUSSION

The *N. melanderi* genome assembly resulted in 268,376 scaffolds (3,194 > 1 kb) with an N50 contig length of 25.01 kb and scaffold length of 2.05 Mb (Table 1). Total size is estimated to be 299.6 Mb, based on a k-mer analysis with $k = 17$ and a peak depth of 70. CEGMA analysis indicated 244 of 248 (98.39%) core eukaryotic genes were completely assembled, and 10.25% of the detected CEGMAs had more than one ortholog. BUSCO analyses indicated 98.8% of Insecta BUSCOs were complete in the assembly (Table S3).

Our official gene set includes 10,847 predicted protein-coding gene models. This is likely to be a relatively complete gene set, as 96.0% of Insecta BUSCOs were identified as complete, which is comparable to other bee genomes (Table S3). Most (8,075) of the predicted genes belong to ancient OGs that include orthologs in vertebrate species. However, there were 819 genes without any known orthologs (Figure 1B). Our comparative analysis with representative Hymenoptera species and the outgroup, *P. humanus*, identified 2,025 single-copy orthologs from which we constructed the molecular species phylogeny that confidently places Halictidae as a sister group to the combined Apidae and Megachilidae groups within Apoidea (Figure 1C). Orthology delineation showed that 92.2% of *N. melanderi* predicted genes have orthologs in other insects and only 16 of them were unique to the family Halictidae (Figure 1C). Transcription factor motif binding scores for each gene are available in File S2.

In a genome-assembly independent approach using short reads and DnaPipeTE, we assembled 54,236 repetitive elements, suggesting that 37.5% of the *N. melanderi* genome is repetitive content (File S3; Figure 1D). We identified transposable elements from all major groups (LTR, LINE, SINE, DNA, Helitron) and other elements with similarities to unclassified repeats (7,866 total annotated repeats), but unknown elements are the most abundant type of transposon (25.5%) (Figure 1D), showing no similarities to known repetitive elements, conserved domains, or sequences in NCBI's non-redundant nt database.

Of annotated transposable elements, LINE retrotransposons (most common: I and Jockey) were the most abundant, followed by LTR retrotransposons (most common: Gypsy) and small amounts of DNA (mostly Tc1-Mariner, PiggyBac, hAT and Kolobok) or other transposons (File S3). Some annotations suggest the presence of Crypton, Helitron and Maverick elements as well as 5S/tRNA SINE (File S3). A majority of the detected retroelements show little sequence divergence, indicating recent activity, particularly Gypsy (LTR), Copia (LTR), I (LINE) and R2 (LINE).

Annotation of the genome assembly yielded 25.93 Mbp of masked sequences (8.59% at 10% sequence divergence), which is less than the repetitive fraction of >37% inferred by DnaPipeTE. Even at a 20% sequence divergence threshold, only 43.36 Mbp (14.37%) were masked, suggesting that a substantial fraction of the repetitive part of the genome is not part of the genome assembly, likely due to the technical limitations in assembling repetitive elements from short reads.

Our population genetic analysis indicated our population is panmictic. We did not find any evidence of population structure among our

However, we find several lines of evidence to suggest that effective population size of our *N. melanderi* population has declined in the recent past. First, our estimates of genetic diversity were surprisingly low. Three of the 18 females in our dataset had significantly higher homozygosity than expected ($P < 0.05$). Genetic diversity (π) across the genome in 1Kb windows (corrected for coverage, see Methods) was estimated to be 0.00153. This is intermediate to diversity previously estimated for *Apis mellifera* (0.0131, (Harpur *et al.* 2014)) and *Bombus impatiens* (0.002, (Harpur *et al.* 2017)).

Second, the genome-wide average Tajima's D was significantly greater than 0 (one-way T-test; mean = 0.77 +/- 0.002 SE; $P < 0.00001$) indicating a recent population decline.

Third, N_e is predicted to have declined within the last 10,000 years (Figure 2B). In the last 2,000 years, N_e has had a median of 12,554 individuals (range: 3,119-3,978,942). The long, slow population decline reflected in our samples corresponds to a period during which much of Washington state was underwater due to glacial flooding, known as the Missoula Floods. Our study area, Touchet Valley, was under Lake Lewis during this time, and was thus uninhabitable for ground-nesting bees.

More recent fluctuations in N_e may reflect less catastrophic events. Seed growers have maintained large nesting areas ("bee beds") for alkali bees within a 240 km² watershed that encompasses our sampling area for several decades (Cane 2008). Some of these bee beds are among the largest nesting aggregations ever recorded, at up to 278 nests per m². However, survey data suggests there are large fluctuations in population size, as the population increased ninefold over an eight year period (1999-2006) (Cane 2008). Records from individual bee beds reflect these fluctuations. For example, a bed that was started in 1973 grew from 550 nesting females to 5.3 million nesting females in 33 years (Johansen *et al.* 1978; Cane 2008). However, other beds were destroyed or abandoned for decades at a time, only to be recolonized later. A large population crash occurred in the 1990s, likely due to use of a new pesticide (Cane 2008), and flooding events have caused massive valley-wide reproductive failures (Stephen 2003). Our wide range of N_e estimates and signatures of genetic bottlenecks likely reflect these population fluctuations.

Our selection scan revealed 479 *N. melanderi* genes under positive directional selection. Genes under selection were highly conserved, and the age distribution was similar to the distribution across all predicted genes ($\chi^2 = 54$, d.f. = 48, $P = 0.26$; Table S4). Genes showing signatures of ongoing positive selection were enriched for functions related to tRNA transfer and DNA/nucleosome binding (Figure 2C, Table S5). Because DNA binding is typically an indicator of transcription factor activity, we performed enrichment analysis of genes under selection with our previously defined transcription factor motif target sets (File S2). The most enriched motif target sets (adjusted- $P < 6E-04$) included transcription factors involved in neural differentiation (*brick-a-brack 1*, *prospero*, *nubbin*, *zelda*, *twinn-of-eyeless*, *pox meso*, *worniu*) and neural secretory functions (*dimmed*) (Table S6). We identified 505,203 functional predictions for 412,800 variable sites (SNPs) within 9,692 genes, most of which are intergenic (File S4).

Our analysis of evolutionary rates included 6,644 single-copy orthologs, most of which (95%) were evolving at similar rates across all four halictid bee lineages. We identified 61 *N. melanderi* genes that are evolving at a significantly different rate from other halictid bees (Table S7). Of these, the majority (74%) are evolving slower than in other lineages. These genes are significantly enriched for functions related to transcription and translation (Figure 2D, Table S8). The distribution of estimated dN/dS values for *N. melanderi* genes was skewed toward zero, with a notable absence of values greater than one (Figure 2E). This suggests that most genes in our analysis show evidence of neutral or purifying

selection. This result is likely influenced by the vast evolutionary distance separating the four halictid lineages, which shared a common ancestor > 150 million years ago (Branstetter *et al.* 2017). Our set of single-copy orthologs was thus limited to highly conserved genes.

In conclusion, we present a high quality draft genome assembly of the solitary alkali bee, *N. melanderi*, that will be a valuable resource for both basic and applied research communities.

ACKNOWLEDGMENTS

We are grateful to M. Ingham, M. Buckley, and M. Wagoner for allowing us to collect from their bee beds. J. Dodd and Forage Genetics International provided lab space while in the field. Sequencing was performed by the Roy J. Carver Biotechnology Center at University of Illinois at Urbana-Champaign (UIUC). Computational support was provided by University of Utah Center for High Performance Computing and UIUC CNRG/Biocluster. J. Johnson (Life Sciences Studios) created the illustration in Figure 1. Funding was provided by grants from the USDA-ARS Alfalfa Pollinator Research Initiative (KMK). This research was supported by the Utah Agricultural Experiment Station, Utah State University, and approved as journal paper number 9175 (KMK) and Agriculture and Food Research Initiative competitive award no. 2018-67014-27542 from the USDA National Institute of Food and Agriculture (KMK). Additional funding was provided by a Smithsonian Institution Competitive Grants Program for Biogenomics (WTW, KMK, BMJ), Swiss National Science Foundation grant PP00P3_170664 (RMW), and general research funds from the Smithsonian Tropical Research Institute (WTW).

LITERATURE CITED

- Alexander, D. H., J. Novembre, and K. Lange, 2009 Fast model-based estimation of ancestry in unrelated individuals. *Genome Res.* 19: 1655–1664. <https://doi.org/10.1101/gr.094052.109>
- Bairoch, A., 2004 Swiss-Prot: Juggling between evolution and stability. *Brief. Bioinform.* 5: 39–55. <https://doi.org/10.1093/bib/5.1.39>
- Batra, S. W. T., 1970 Behavior of alkali bee, *Nomia-melanderi*, within nest (Hymenoptera-Halictidae). *Ann. Entomol. Soc. Am.* 63: 400–406. <https://doi.org/10.1093/aesa/63.2.400>
- Batra, S. W. T., 1976 Comparative efficiency of alfalfa pollination by *Nomia melanderi*, *Megachile rotundata*, *Anthidium florentinum* and *Pithitis smaragdula* (Hymenoptera: Apoidea). *Source J. Kansas Entomol. Soc.* 49: 18–22.
- Batra, S. W. T., 1972 Some properties of the nest-building secretions of *Nomia*, *Anthophora*, *Hylaeus* and other bees. *J. Kans. Entomol. Soc.* 45: 208–218.
- Batra, S. W., and G. E. Bohart, 1969 Alkali bees: response of adults to pathogenic fungi in brood cells. *Science* 165: 607. <https://doi.org/10.1126/science.165.3893.607>
- Benjamini, Y., and Y. Hochberg, 1995 Controlling the false discovery rate: a practical and powerful approach to multiple testing. *J. R. Stat. Soc. B* 57: 289–300.
- Benson, G., 1999 Tandem repeats finder: a program to analyze DNA sequences. *Nucleic Acids Res.* 27: 573–580. <https://doi.org/10.1093/nar/27.2.573>
- Birney, E., M. Clamp, and R. Durbin, 2004 GeneWise and GenomeWise. *Genome Res.* 14: 988–995. <https://doi.org/10.1101/gr.1865504>
- Bouchet-Valat, M., 2014 Snowball stemmers based on the C libstemmer UTF-8 library [R package SnowballC version 0.5.1].
- Brady, S. G., S. Sipes, A. Pearson, and B. N. Danforth, 2006 Recent and simultaneous origins of eusociality in halictid bees. *Proc. Biol. Sci.* 273: 1643–1649. <https://doi.org/10.1098/rspb.2006.3496>
- Branstetter, M. G., A. K. Childers, D. Cox-Foster, K. R. Hopper, K. M. Kapheim *et al.*, 2018 Genomes of the Hymenoptera. *Curr. Opin. Insect Sci.* 25: 65–75. <https://doi.org/10.1016/j.cois.2017.11.008>
- Branstetter, M. G., B. N. Danforth, J. P. Pitts, B. C. Faircloth, P. S. Ward *et al.*, 2017 Phylogenomic insights into the evolution of stinging wasps and

- the origins of ants and bees. *Curr. Biol.* 27: 1019–1025. <https://doi.org/10.1016/j.cub.2017.03.027>
- Camacho, C., G. Coulouris, V. Avagyan, N. Ma, J. Papadopoulos *et al.*, 2009 BLAST+: architecture and applications. *BMC Bioinformatics* 10: 421. <https://doi.org/10.1186/1471-2105-10-421>
- Cane, J. H., 2008 A native ground-nesting bee (*Nomia melanderi*) sustainably managed to pollinate alfalfa across an intensively agricultural landscape. *Apidologie (Celle)* 39: 315–323. <https://doi.org/10.1051/apido:2008013>
- Cane, J. H., 2002 Pollinating bees (Hymenoptera: Apiformes) of U.S. alfalfa compared for rates of pod and seed set. *J. Econ. Entomol.* 95: 22–27. <https://doi.org/10.1603/0022-0493-95.1.22>
- Capella-Gutierrez, S., J. M. Silla-Martinez, and T. Gabaldon, 2009 trimAl: a tool for automated alignment trimming in large-scale phylogenetic analyses. *Bioinformatics* 25: 1972–1973. <https://doi.org/10.1093/bioinformatics/btp348>
- Cingolani, P., A. Platts, L. L. Wang, M. Coon, T. Nguyen *et al.*, 2012 A program for annotating and predicting the effects of single nucleotide polymorphisms, SnpEff: SNPs in the genome of *Drosophila melanogaster* strain w1118; iso-2; iso-3. *Fly (Austin)* 6: 80–92. <https://doi.org/10.4161/fly.19695>
- Danecek, P., A. Auton, G. Abecasis, C. A. Albers, E. Banks *et al.*, 2011 The variant call format and VCFtools. *Bioinformatics* 27: 2156–2158. <https://doi.org/10.1093/bioinformatics/btr330>
- Danforth, B. N., S. Cardinal, C. Praz, E. A. B. Almeida, and D. Michez, 2013 The impact of molecular data on our understanding of bee phylogeny and evolution. *Annu. Rev. Entomol.* 58: 57–78. <https://doi.org/10.1146/annurev-ento-120811-153633>
- Danforth, B. N., C. Eardley, L. Packer, K. Walker, A. Pauly *et al.*, 2008 Phylogeny of Halictidae with an emphasis on endemic African Halictinae. *Apidologie (Celle)* 39: 86–101. <https://doi.org/10.1051/apido:2008002>
- Edgar, R. C., 2004 MUSCLE: multiple sequence alignment with high accuracy and high throughput. *Nucleic Acids Res.* 32: 1792–1797. <https://doi.org/10.1093/nar/gkh340>
- Edgar, R. C., and E. W. Myers, 2005 PILER: identification and classification of genomic repeats. *Bioinformatics* 21: i152–i158. <https://doi.org/10.1093/bioinformatics/bti1003>
- Elsik, C. G., K. C. Worley, A. K. Bennett, M. Beye, F. Camara *et al.*, 2014 Finding the missing honey bee genes: Lessons learned from a genome upgrade. *BMC Genomics* 15: 86. <https://doi.org/10.1186/1471-2164-15-86>
- Feinerer, I., K. Hornik, and D. Meyer, 2008 Text mining infrastructure in R. *J. Stat. Softw.* 25: 1–54. <https://doi.org/10.18637/jss.v025.i05>
- Fellows, L., 2018 wordcloud: Word Clouds. R package version 2.6.
- Finn, R. D., J. Clements, and S. R. Eddy, 2011 HMMER web server: interactive sequence similarity searching. *Nucleic Acids Res.* 39: W29–W37. <https://doi.org/10.1093/nar/gkr367>
- Gentleman, R., and S. Falcon, 2013 Package “GOSTats.”
- Gibbs, J., S. G. Brady, K. Kanda, and B. N. Danforth, 2012 Phylogeny of halictine bees supports a shared origin of eusociality for *Halictus* and *Lasioglossum* (Apoidea: Anthophila: Halictidae). *Mol. Phylogenet. Evol.* 65: 926–939. <https://doi.org/10.1016/j.ympev.2012.08.013>
- Goubert, C., L. Modolo, C. Vieira, C. ValienteMoro, P. Mavingui *et al.*, 2015 De novo assembly and annotation of the Asian tiger mosquito (*Aedes albopictus*) repeatome with dnaPipeTE from raw genomic reads and comparative analysis with the yellow fever mosquito (*Aedes aegypti*). *Genome Biol. Evol.* 7: 1192–1205. <https://doi.org/10.1093/gbe/evv050>
- Harpur, B. A., A. Dey, J. R. Albert, S. Patel, H. M. Hines *et al.*, 2017 Queens and workers contribute differently to adaptive evolution in bumble bees and honey bees. *Genome Biol. Evol.* 9: 2395–2402. <https://doi.org/10.1093/gbe/evx182>
- Harpur, B. A., C. F. Kent, D. Molodtsova, J. M. Lebon, A. S. Alqarni *et al.*, 2014 Population genomics of the honey bee reveals strong signatures of positive selection on worker traits. *Proc. Natl. Acad. Sci. USA* 111: 2614–2619. <https://doi.org/10.1073/pnas.1315506111>
- James, R. R., 2011 Bee importation, bee price data, and chalk-brood, in *Western Alfalfa Seed Grower Association Winter Seed Conference*, Las Vegas, NV.
- Johansen, C. A., D. F. Mayer, and J. D. Eves, 1978 *Biology and management of the alkali bee, Nomia melanderi Cockrell (Hymenoptera: Halictidae)*. Washington State Entomology.
- Johnson, A. D., R. E. Handsaker, S. L. Pulit, M. M. Nizzari, C. J. O’Donnell *et al.*, 2008 SNAP: A web-based tool for identification and annotation of proxy SNPs using HapMap. *Bioinformatics* 24: 2938–2939. <https://doi.org/10.1093/bioinformatics/btn564>
- Joshi, N., and J. Fass, 2011 Sickle: A sliding-window, adaptive, quality-based trimming tools for FastQ files.
- Kapheim, K. M., 2017 Nutritional, endocrine, and social influences on reproductive physiology at the origins of social behavior. *Curr. Opin. Insect Sci.* 22: 62–70. <https://doi.org/10.1016/j.cois.2017.05.018>
- Kapheim, K. M., and M. M. Johnson, 2017a Juvenile hormone, but not nutrition or social cues, affects reproductive maturation in solitary alkali bees (*Nomia melanderi*). *J. Exp. Biol.* jeb.162255.
- Kapheim, K. M., and M. M. Johnson, 2017b Support for the reproductive ground plan hypothesis in a solitary bee: Links between sucrose response and reproductive status. *Proc. Biol. Sci.* 284: 20162406. <https://doi.org/10.1098/rspb.2016.2406>
- Kapheim, K. M., H. Pan, C. Li, S. L. Salzberg, D. Puiu *et al.*, 2015 Social evolution. Genomic signatures of evolutionary transitions from solitary to group living. *Science* 348: 1139–1143. <https://doi.org/10.1126/science.aaa4788>
- Kelley, J. L., J. Madeoy, J. C. Calhoun, W. Swanson, and J. M. Akey, 2006 Genomic signatures of positive selection in humans and the limits of outlier approaches. *Genome Res.* 16: 980–989. <https://doi.org/10.1101/gr.5157306>
- Kocher, S. D., C. Li, W. Yang, H. Tan, S. V. Yi *et al.*, 2013 The draft genome of a socially polymorphic halictid bee, *Lasioglossum albipes*. *Genome Biol.* 14: R142 (erratum: *Genome Biol.* 16: 34). <https://doi.org/10.1186/gb-2013-14-12-r142>
- Li, H., 2013 Aligning sequence reads, clone sequences and assembly contigs with BWA-MEM. ARXIV 1303.3997:
- Liu, H., Y. Jia, X. Sun, D. Tian, L. D. Hurst *et al.*, 2017 Direct determination of the mutation rate in the bumblebee reveals evidence for weak recombination-associated mutation and an approximate rate constancy in insects. *Mol. Biol. Evol.* 34: 119–130. <https://doi.org/10.1093/molbev/msw226>
- Löytynoja, A., 2014 Phylogeny-aware alignment with PRANK, pp. 155–170 in *Multiple Sequence Alignment Methods. Methods in Molecular Biology (Methods and Protocols)*, edited by Russell, D., Humana Press, Totowa, NJ.
- Penn, O., E. Privman, H. Ashkenazy, G. Landan, D. Graur *et al.*, 2010 GUIDANCE: a web server for assessing alignment confidence scores. *Nucleic Acids Res.* 38: W23–W28. <https://doi.org/10.1093/nar/gkq443>
- Picard. <http://picard.sourceforge.net/>. Accessed January 12, 2016.
- Price, A. L., N. C. Jones, and P. A. Pevzner, 2005 De novo identification of repeat families in large genomes. *Bioinformatics* 21: i351–i358. <https://doi.org/10.1093/bioinformatics/bti1018>
- Quevillon, E., V. Silventoinen, S. Pillai, N. Harte, N. Mulder *et al.*, 2005 InterProScan: protein domains identifier. *Nucleic Acids Res.* 33: W116–W120. <https://doi.org/10.1093/nar/gk442>
- Quinlan, A. R., and I. M. Hall, 2010 BEDTools: a flexible suite of utilities for comparing genomic features. *Bioinformatics* 26: 841–842. <https://doi.org/10.1093/bioinformatics/btq033>
- R Core Team 2016 R: A language and environment for statistical computing.
- Rehan, S. M., and A. L. Toth, 2015 Climbing the social ladder: The molecular evolution of sociality. *Trends Ecol. Evol.* 30: 426–433. <https://doi.org/10.1016/j.tree.2015.05.004>
- Robinson, G. E., C. M. Grozinger, and C. W. Whitfield, 2005 Sociogenomics: Social life in molecular terms. *Nat. Rev. Genet.* 6: 257–270. <https://doi.org/10.1038/nrg1575>
- Romiguier, J., J. Lourenco, P. Gayral, N. Faivre, L. A. Weinert *et al.*, 2014 Population genomics of eusocial insects: the costs of a

- vertebrate-like effective population size. *J. Evol. Biol.* 27: 593–603. <https://doi.org/10.1111/jeb.12331>
- Sadd, B. M., S. M. Barribeau, G. Bloch, D. C. De Graaf, P. Dearden *et al.*, 2015 The genomes of two key bumblebee species with primitive eusocial organization. *Genome Biol.* 16: 76. <https://doi.org/10.1186/s13059-015-0623-3>
- Sinha, S., Y. Liang, and E. Siggia, 2006 Stubb: a program for discovery and analysis of cis-regulatory modules. *Nucleic Acids Res.* 34: W555–W559. <https://doi.org/10.1093/nar/gkl224>
- Smit, A. F. A., R. Hubley, and P. Green, RepeatMasker. Available at: <http://www.repeatmasker.org>. Accessed April 9, 2013.
- Stamatakis, A., 2014 RAxML version 8: a tool for phylogenetic analysis and post-analysis of large phylogenies. *Bioinformatics* 30: 1312–1313. <https://doi.org/10.1093/bioinformatics/btu033>
- Stanke, M., O. Keller, I. Gunduz, A. Hayes, S. Waack *et al.*, 2006 AUGUSTUS: Ab initio prediction of alternative transcripts. *Nucleic Acids Res.* 34: W435–W439.
- Stephen, W. P., 2003 Solitary bees in North American agriculture: a perspective, pp. 41–66 in *For Nonnative Crops, Whence Pollinators of the Future?* edited by Strickler, K., and J. H. Cane. Entomol. Soc. Am., Lanham, MD.
- Stolle, E., R. Pracana, P. Howard, C. I. Paris, S. J. Brown *et al.*, 2018 Degenerative expansion of a young supergene. *bioRxiv* 326645.
- Suyama, M., D. Torrents, and P. Bork, 2006 PAL2NAL: robust conversion of protein sequence alignments into the corresponding codon alignments. *Nucleic Acids Res.* 34: W609–W612. <https://doi.org/10.1093/nar/gkl315>
- Tajima, F., 1989 The effect of change in population size on DNA polymorphism. *Genetics* 123: 597–601.
- Terhorst, J., J. A. Kamm, and Y. S. Song, 2017 Robust and scalable inference of population history from hundreds of unphased whole genomes. *Nat. Genet.* 49: 303–309. <https://doi.org/10.1038/ng.3748>
- Trapnell, C., L. Pachter, and S. L. Salzberg, 2009 TopHat: Discovering splice junctions with RNA-Seq. *Bioinformatics* 25: 1105–1111. <https://doi.org/10.1093/bioinformatics/btp120>
- Trapnell, C., A. Roberts, L. Goff, G. Pertea, D. Kim *et al.*, 2012 Differential gene and transcript expression analysis of RNA-seq experiments with TopHat and Cufflinks. *Nat. Protoc.* 7: 562–578 (erratum: *Nat. Protoc.* 9: 2513). <https://doi.org/10.1038/nprot.2012.016>
- U.S. Department of Agriculture, N. A. S. S., 2014 Census of Agriculture Summary and State Data 2012: U.S. Government Printing Office. https://www.nass.usda.gov/Publications/Ag_Statistics/2014/Ag%20Stats%202014_Complete%20Publication.pdf
- Van Deynze, A. E., S. Fitzpatrick, B. Hammon, M. H. McCaslin, D. H. Putnam *et al.*, 2008 Gene flow in alfalfa: biology, mitigation, and potential impact on production. https://books.google.com/books/about/Gene_Flow_in_Alfalfa.html?id=x2AYAQAAMAAJ&source=kp_book_description
- Waterhouse, R. M., M. Seppey, F. A. Simão, M. Manni, P. Ioannidis *et al.*, 2018 BUSCO Applications from quality assessments to gene prediction and phylogenomics. *Mol. Biol. Evol.* 35: 543–548. <https://doi.org/10.1093/molbev/msx319>
- Wcislo, W. T., and M. S. Engel, 1996 Social behavior and nest architecture of nomiine bees (Hymenoptera: Halictidae; Nomiinae). *J. Kans. Entomol. Soc.* 69: 158–167.
- Wcislo, W. T., and J. H. Fewell, 2017 Sociality in bees, pp. 50–83 in *Comparative Social Evolution*, edited by Rubenstein, D. R., and P. Abbot. Cambridge University Press, Cambridge. <https://doi.org/10.1017/9781107338319.004>
- Wilson, E. O., 1971 *The Insect Societies*, Harvard University Press, Cambridge, Massachusetts.
- Xu, Z., and H. Wang, 2007 LTR_FINDER: an efficient tool for the prediction of full-length LTR retrotransposons. *Nucleic Acids Res.* 35: W265–W268. <https://doi.org/10.1093/nar/gkm286>
- Yang, Z., 2007 PAML 4: Phylogenetic analysis by maximum likelihood. *Mol. Biol. Evol.* 24: 1586–1591. <https://doi.org/10.1093/molbev/msm088>
- Yang, J., B. Benyamin, B. P. McEvoy, S. Gordon, A. K. Henders *et al.*, 2010 Common SNPs explain a large proportion of heritability for human height. *Nat. Genet.* 42: 565–569. <https://doi.org/10.1038/ng.608>
- Zdobnov, E. M., and R. Apweiler, 2001 InterProScan—an integration platform for the signature-recognition methods in InterPro. *Bioinformatics* 17: 847–848. <https://doi.org/10.1093/bioinformatics/17.9.847>
- Zdobnov, E. M., F. Tegenfeldt, D. Kuznetsov, R. M. Waterhouse, F. A. Simão *et al.*, 2017 OrthoDB v9.1: cataloging evolutionary and functional annotations for animal, fungal, plant, archaeal, bacterial and viral orthologs. *Nucleic Acids Res.* 45: D744–D749. <https://doi.org/10.1093/nar/gkw1119>
- Zhu, L. J., R. G. Christensen, M. Kazemian, C. J. Hull, M. S. Enuameh *et al.*, 2011 FlyFactorSurvey: A database of *Drosophila* transcription factor binding specificities determined using the bacterial one-hybrid system. *Nucleic Acids Res.* 39: D111–D117. <https://doi.org/10.1093/nar/gkq858>

Communicating editor: K. Thornton