

# Prognostic significance of neutrophil–lymphocyte ratio and carbohydrate antigen 19-9 in patients with gallbladder carcinoma

Fei Liu, MD, Hai-Jie Hu, MD, Wen-Jie Ma, MD, Qin Yang, MD, Jun-Ke Wang, MD, Fu-Yu Li, MD, PhD\*

## Abstract

The neutrophil–lymphocyte ratio (NLR) is an immune response-related indicator and it is associated with poor prognosis of various cancers. The carbohydrate antigen 19-9 (CA19-9) is a tumor-associated antigen and it has prognostic relevance in gallbladder carcinoma (GBC). We aimed to analyze whether preoperative NLR and serum CA19-9 were associated with outcomes of GBC patients after surgery with curative intent.

Between January 2010 and May 2015, 90 resectable GBC patients who underwent curative surgery in our institution were included. All final diagnoses were confirmed by pathologic examination. The demographics, clinical, and histopathology data were analyzed. The Cox regression proportional hazard model and Kaplan–Meier method were used to assess prognostic factors.

The cutoff values of 4.33 and 250.90 U/mL were defined as high NLR and high CA19-9, respectively. The univariate analyses showed that TNM stage, lymph node metastasis, the degree of tumor differentiation, margin status, combined hepatectomy, CA19-9, NLR, and PNI were all associated with overall survival ( $P < .05$ ). According to the multivariable analysis, NLR (hazard ratio (HR) 3.840, 95% confidence interval (95% CI): 2.122–6.947,  $P < .001$ ), CA19-9 (HR 2.230, 95% CI: 1.297–3.835,  $P = .004$ ), TNM stage (HR 3.864, 95% CI: 1.819–8.207,  $P < .001$ ), lymph node metastasis (HR 1.679, 95% CI: 1.005–2.805,  $P = .048$ ), and margin status (HR 1.873, 95% CI: 1.063–3.300,  $P = .030$ ) were independent prognostic factors. The median survival time in low NLR and CA19-9 group was better than high NLR and CA19-9 group ( $P < .05$ ).

The preoperative NLR and serum CA19-9 are associated with prognosis of patients with GBC. High NLR and high CA19-9 were predictors of poor long-term outcome among patients with GBC undergoing curative surgery.

**Abbreviations:** ALB = Serum Albumin, BMI = body mass index, CA19-9 = carbohydrate antigen 19-9, CBD = common bile duct, CEA = carcinoembryonic antigen, GBC = gallbladder carcinoma, HR = hazard ratio, NLR = neutrophil-lymphocyte ratio, OS = overall survival, PLR = platelet-lymphocyte ratio, PLT = platelet, PNI = Onodera's prognostic nutrition index, SD = standard deviation, TNM = tumor, node, metastasis classification system, WBC = white blood cell.

**Keywords:** CA19-9, gallbladder carcinoma, NLR, prognostic

## 1. Introduction

Gallbladder carcinoma (GBC) is the most common malignancy of the biliary tract. It is more common in some developing

countries<sup>[1]</sup> and accounts for about 1% of all cancers in China.<sup>[2]</sup> Curative resection is the only potentially curative therapeutic option for GBC.<sup>[3,4]</sup> However, early diagnosis of GBC is difficult because its early symptoms are usually nonspecific and highly invasive character.<sup>[5]</sup> Therefore, the curative resection rate (22%–38%) is low.<sup>[3,4]</sup> Under standard treatments, the overall 5-year survival rate of GBC (2.7%–20.1%) is still unsatisfied.<sup>[6,7]</sup> The prediction of tumor progression after curative resection is limited to the use of histopathological features such as resection margin, differentiation, tumor size, and lymph node metastasis.

Recently, some factors have been reported to be related to a poor prognosis of GBC.<sup>[8,9]</sup> There is increasing evidence correlating the presence of inflammation with tumor progression and metastasis. The Onodera's prognostic nutrition index (PNI), neutrophil-lymphocyte ratio (NLR), and platelet-lymphocyte ratio (PLR) have been identified as significant predictor for patients' survival in various different tumors, such as gastric cancer, malignant mesothelioma, and colorectal cancer.<sup>[9–11]</sup> The carbohydrate antigen 19-9 (CA19-9) is a tumor-associated antigen. It is a widely used marker for biliary and pancreatic tumor. For the diagnosis of GBC, its sensitivity and specificity are 77.5% and 68.7%, respectively.<sup>[12]</sup> Moreover, CA 19-9 has been reported to be a prognostic marker in various tumors.<sup>[13,14]</sup> Thus, the purpose of this study was to explore the roles of preoperative

Editor: Lei Huang.

FL and H-JH contributed equally to this work and were the co-first authors.

This study was funded by the National Nature Science of China (30801111), Science and Technology Support Project of Sichuan Province [No. 2014SZ0002-10], and Applied Basic Research Project of Sichuan Province (2018JY0019).

The authors have no conflicts of interest to disclose.

Department of Biliary Surgery, West China Hospital of Sichuan University, Chengdu, Si chuan Province, China.

\* Correspondence: Fu-Yu Li, Department of Biliary Surgery, West China Hospital of Sichuan University, Chengdu 610041, Sichuan Province, China (e-mail: lfy\_74@hotmail.com).

Copyright © 2019 the Author(s). Published by Wolters Kluwer Health, Inc. This is an open access article distributed under the terms of the Creative Commons Attribution-Non Commercial-No Derivatives License 4.0 (CCBY-NC-ND), where it is permissible to download and share the work provided it is properly cited. The work cannot be changed in any way or used commercially without permission from the journal.

Medicine (2019) 98:8(e14550)

Received: 24 July 2018 / Received in final form: 4 October 2018 / Accepted: 24 January 2019

<http://dx.doi.org/10.1097/MD.00000000000014550>

**Table 1**  
Univariate analysis of overall survival.

Variables	Mean ± SD	Characteristics	Univariate	
			n	P*
Sex		Male	26	.335
		Female	64	
Age, y	59.31 ± 11.40	<60	44	.152
		≥60	46	
BMI, kg/m <sup>2</sup>	22.63 ± 2.72	<23	50	.154
		≥23	40	
Serum parameter				
Hemoglobin, g/dL	12.47 ± 1.57	<12.47	41	.487
		≥12.47	49	
WBC count, 10 <sup>3</sup> /mm <sup>3</sup>	6.81 ± 2.78	<6.81	57	.452
		≥6.81	33	
Platelet count, 10 <sup>3</sup> /mm <sup>3</sup>	203.82 ± 80.56	<203.82	49	.345
		≥203.82	41	
T-Bil, mg/dL	3.50 ± 5.98	<3.50	69	.139
		≥3.50	21	
CEA, ng/mL	12.42 ± 30.93	<12.42	70	.245
		≥12.42	20	
CA19-9, U/mL	250.90 ± 359.97	<250.90	64	<.001
		≥250.90	26	
NLR	4.33 ± 4.69	<4.33	59	<.001
		≥4.33	31	
PNI	39.92 ± 4.68	<39.92	41	.001
		≥39.92	49	
PLR	181.53 ± 145.58	<181.53	52	.076
		≥181.53	38	
TNM stage		I and II	20	<.001
		III and IV	70	
Lymph node metastasis		Absent and not available	39	<.001
		Present	51	
Tumor differentiation		Well and Moderate	61	<.001
		Poor and undifferentiated	29	
Margin status		R0	69	<.001
		R1	21	
Combined hepatectomy		No	8	.001
		Yes	82	
Combined CBD resection		No	83	.168
		Yes	7	
Lymphadenectomy		No	24	.281
		Yes	66	

Mean ± SD = mean ± standard deviation (SD), n = number, BMI = body mass index, CA 19-9 = carbohydrate antigen 19-9, CBD = common bile duct, CEA = carcinoembryonic antigen, NLR = neutrophil-to-lymphocyte ratio, PLR = platelet-to-lymphocyte ratio, PNI =  $(10 \times \text{Albumin}) + (0.005 \times \text{Total lymphocyte count})$ , PNI = Onodera prognostic nutrition index, T-Bil = total bilirubin, TNM = tumor, node, metastasis classification system, WBC = white blood cell count.

\*  $\chi^2$  test or Student's *t* test.

NLR and CA19-9 in the prognosis assessment of the patients with curative resection for GBC.

## 2. Patients and methods

### 2.1. Patients and data collection

Data from 90 respectable GBC patients after surgery with curative intent at West China Hospital of Sichuan University between January 2010 and May 2015 were reviewed retrospectively. All final diagnoses were confirmed by pathologic examination. The resection with curative intent was defined as R0 or R1 resections.<sup>[15]</sup> Clinical and pathological data were collected, including age, sex, body mass index (BMI), and serum parameters such as hemoglobin, white blood cell count (WBC count), platelet count, total bilirubin, CA19-9, carcinoembryonic antigen (CEA), nutritional, and inflammatory markers

**Table 2**  
Multivariate analysis of overall survival.

Variables	OS HR (95% CI)	P value
NLR	3.840 (2.122,6.947)	<.001
CA19-9, U/mL	2.230 (1.297,3.835)	.004
TNM stage	3.864 (1.819,8.207)	<.001
Lymph node metastasis	1.679 (1.005,2.805)	.048
Margin status	1.873 (1.063,3.300)	.030

CI = confidence interval, CA19-9 carbohydrate antigen 19-9, HR = hazard ratio, NLR = neutrophil-to-lymphocyte ratio, OS = overall survival, TNM = tumor, node, metastasis classification system.

**Table 3**  
Clinical pathological factors of patients with NLR < 4.33 compared with NLR ≥ 4.33.

Variables	NLR < 4.33 (n=59, 65.6%)	NLR ≥ 4.33 (n=31, 34.4%)	P*
Sex			.640
Male	18 (20.0%)	8 (8.9%)	
Female	41 (45.6%)	23 (25.6%)	
Age			.207
<60 y	26 (28.9%)	18 (20.0%)	
≥60 y	33 (36.7%)	13 (14.4%)	
BMI, kg/m <sup>2</sup>			.215
<23	30 (33.3%)	20 (22.2%)	
≥23	29 (32.2%)	11 (12.2%)	
Serum parameter			
Hemoglobin, g/dL	12.58 ± 1.64	12.27 ± 1.43	.377
WBC count, 10 <sup>3</sup> /mm <sup>3</sup>	6.29 ± 2.16	7.80 ± 3.51	.035
Platelet count, 10 <sup>3</sup> /mm <sup>3</sup>	200.78 ± 79.70	209.61 ± 83.17	.624
T-Bil, mg/dL	2.87 ± 5.93	4.71 ± 6.00	.166
CEA, ng/mL	11.76 ± 35.51	13.68 ± 19.94	.782
CA19-9, U/mL	140.40 ± 260.20	461.18 ± 428.74	<.001
PNI	41.34 ± 4.44	37.21 ± 3.91	<.001
PLR	154.55 ± 109.26	232.87 ± 188.79	.014
TNM stage			.002
I and II	19 (12.1%)	1 (1.1%)	
III and IV	40 (44.4%)	30 (33.3%)	
Lymph node metastasis			<.001
Absent and not available	34 (37.8%)	5 (5.6%)	
Present	25 (27.8%)	26 (28.9%)	
Tumor differentiation			<.001
Well and moderate	49 (54.4%)	12 (13.3%)	
Poor and undifferentiated	10 (11.1%)	19 (21.1%)	
Margin status			<.001
R0	52 (57.8%)	17 (18.9%)	
R1	7 (7.8%)	14 (15.6%)	
Combined hepatectomy			.079
No	8 (8.9%)	0 (0%)	
Yes	51 (56.7%)	31 (34.4%)	
Combined CBD resection			.367
No	56 (62.2%)	27 (30.0%)	
Yes	3 (3.3%)	4 (4.4%)	
Lymphadenectomy			.713
No	15 (16.7%)	9 (10.0%)	
Yes	44 (48.9%)	22 (24.4%)	

BMI = body mass index, CA19-9 = carbohydrate antigen 19-9, CBD = common bile duct, CEA = carcinoembryonic antigen, NLR = neutrophil-to-lymphocyte ratio, PNI =  $(10 \times \text{albumin}) + (0.005 \times \text{total lymphocyte count})$ , PLR = platelet-to-lymphocyte ratio, PNI = Onodera prognostic nutrition index, T-Bil = total bilirubin, TNM = tumor, node, metastasis classification system, WBC = white blood cell count.

\*  $\chi^2$  test or Student *t* test.

such as PNI, NLR, and PLR, type of resection and tumor differentiation were analyzed. The measurement of serum parameters was performed within 1 week before the operation. In our study, hemoglobin, WBC, platelet count (PLT),

neutrophil, and lymphocyte count were determined with XE-2100 and XE-5000 systems (Sysmex Corporation, Kobe, Japan). Serum Albumin (ALB) was determined with a cobas 8000 analyser (Roche, Mannheim, Germany). Serum CA 19-9 and CEA were determined with a cobas E601 system (Roche, Mannheim, Germany). CA19-9 > 37 U/mL and CEA > 3.4 ng/mL were the upper limits of normal. The PNI consists of serum ALB and lymphocyte count, reflecting the inflammation and nutritional status of the host. The NLR was defined as the ratio of neutrophil the count to the lymphocyte count, and the PLR was defined as the ratio of the PLT to the lymphocyte count. Staging was according to AJCC 7th edition criteria for GBC.<sup>[16]</sup>

**Table 4**  
Clinical pathological factors of patients with CA19-9 < 250.90 U/mL compared with CA19-9 ≥ 250.90 U/mL.

Variables	CA19-9 < 250.90 U/mL (n=64, 71.1%)	CA19-9 ≥ 250.90 U/mL (n=26, 28.9%)	P*
Sex			.793
Male	19 (21.1%)	7 (7.8%)	
Female	45 (50.0%)	19 (21.1%)	
Age			.126
<60 y	28 (31.1%)	16 (17.8%)	
≥60 y	36 (40.0%)	10 (11.1%)	
BMI, kg/m <sup>2</sup>			.795
<23	35 (38.9%)	15 (16.7%)	
≥23	29 (32.2%)	11 (12.2%)	
Serum parameter			
Hemoglobin, g/dL	12.58 ± 1.64	12.20 ± 1.36	.294
WBC count, 10 <sup>3</sup> /mm <sup>3</sup>	6.56 ± 2.46	7.43 ± 3.42	.244
Platelet count, 10 <sup>3</sup> /mm <sup>3</sup>	201.59 ± 86.78	209.31 ± 63.87	.683
T-Bil, mg/dL	2.89 ± 5.27	5.02 ± 7.37	.127
CEA, ng/mL	12.82 ± 35.17	11.45 ± 16.93	.851
NLR	3.23 ± 1.69	7.03 ± 7.78	.021
PNI	40.80 ± 4.40	37.77 ± 4.71	.004
PLR	161.82 ± 108.68	230.02 ± 205.54	.043
TNM stage			.035
I and II	18 (20.0%)	2 (2.2%)	
III and IV	46 (51.1%)	24 (26.7%)	
Lymph node metastasis			.125
Absent and not available	31 (34.4%)	8 (8.9%)	
Present	33 (36.7%)	18 (20.0%)	
Tumor differentiation			.005
Well and moderate	49 (54.4%)	12 (13.3%)	
Poor and undifferentiated	15 (16.7%)	14 (15.6%)	
Margin status			<.001
R0	56 (62.2%)	13 (14.4%)	
R1	8 (8.9%)	13 (14.4%)	
Combined hepatectomy			.507
No	7 (7.8%)	1 (1.1%)	
Yes	57 (63.3%)	25 (27.8%)	
Combined CBD resection			.199
No	61 (67.8%)	22 (24.4%)	
Yes	3 (3.3%)	4 (4.4%)	
Lymphadenectomy			.277
No	15 (16.7%)	9 (10.0%)	
Yes	49 (54.4%)	17 (18.9%)	

BMI=body mass index, CA19-9=carbohydrate antigen 19-9, CBD=common bile duct, CEA=carcinoembryonic antigen, NLR=neutrophil-to-lymphocyte ratio, PLR=platelet-to-lymphocyte ratio, PNI=(10 × albumin) + (0.005 × total lymphocyte count), PNI=Onodera prognostic nutrition index, T-Bil=total bilirubin, TNM=tumor, node, metastasis classification system, WBC=white blood cell count.

\*  $\chi^2$  test or Student *t* test.

This study complied with the standards of the Helsinki Declaration and current ethical guideline and was approved by the Institutional Ethical Board of West China Hospital of Sichuan University.

**2.2. Study grouping and surgery**

We used mean value as the cutoff point of NLR and CA19-9. The cutoff values of NLR and CA19-9 were 4.33 and 250.90 U/mL, respectively. Patients were classified using the cutoff values of NLR and CA19-9 and were divided into 4 different groups as follows: the high NLR group (NLR ≥ 4.33), the low NLR group (NLR < 4.33), the high CA19-9 group (CA19-9 ≥ 250.90 U/mL), and the low CA19-9 group (CA19-9 < 250.90 U/mL). As a combined utilization of NLR and CA 19-9, patients were divided into 3 groups: patients with NLR < 4.33 and CA19-9 < 250.90 U/mL were group I, patients with either of NLR ≥ 4.33 or CA19-9 ≥ 250.90 U/mL were group II, and patients with

**Table 5**  
Comparison of clinical pathological factors of gallbladder carcinoma patients grouped according to NLR and CA19-9.

Variables	Group I (n=50, 55.6%)	Group II (n=23, 25.6%)	Group III (n=17, 18.9%)	P*
Sex				.667
Male	16 (17.8%)	5 (5.6%)	5 (5.6%)	
Female	34 (37.8%)	18 (20.0%)	12 (13.3%)	
Age				.253
<60 y	21 (23.3%)	12 (13.3%)	11 (12.2%)	
≥60 y	29 (32.2%)	11 (12.2%)	6 (6.7%)	
BMI, kg/m <sup>2</sup>				.657
<23	26 (28.9%)	13 (14.4%)	11 (12.2%)	
≥23	24 (26.7%)	10 (11.1%)	6 (6.7%)	
Serum parameter				
Hemoglobin, g/dL	12.70 ± 1.64	12.06 ± 1.58	12.36 ± 1.26	.343
WBC count, 10 <sup>3</sup> /mm <sup>3</sup>	6.33 ± 2.24	6.84 ± 2.67	8.17 ± 3.86	.222
Platelet count, 10 <sup>3</sup> /mm <sup>3</sup>	198.56 ± 81.65	212.70 ± 91.91	207.29 ± 62.06	.800
T-Bil, mg/dL	2.36 ± 4.53	5.12 ± 8.62	4.67 ± 5.00	.105
CEA, ng/mL	11.33 ± 37.17	15.56 ± 26.32	10.02 ± 10.23	.015
PNI	41.50 ± 4.08	39.11 ± 5.38	36.33 ± 2.93	<.001
PLR	152.47 ± 114.24	183.84 ± 80.00	263.86 ± 243.47	.008
TNM stage				.002
I and II	18 (20.0%)	1 (1.1%)	1 (1.1%)	
III and IV	32 (35.6%)	22 (24.4%)	16 (17.8%)	
Lymph node metastasis				.002
Absent and not available	30 (33.3%)	5 (5.6%)	4 (4.4%)	
Present	20 (22.2%)	18 (20.0%)	13 (14.4%)	
Tumor differentiation				<.001
Well and moderate	43 (47.8%)	12 (13.3%)	6 (6.7%)	
Poor and undifferentiated	7 (7.8%)	11 (12.2%)	11 (12.2%)	
Margin status				<.001
R0	46 (51.1%)	16 (17.8%)	7 (7.8%)	
R1	4 (4.4%)	7 (7.8%)	10 (11.1%)	
Combined hepatectomy				.072
No	7 (7.8%)	1 (1.1%)	0 (0%)	
Yes	43 (47.8%)	22 (24.4%)	17 (18.9%)	
Combined CBD resection				.227
No	48 (53.3%)	21 (23.3%)	14 (15.6%)	
Yes	2 (2.2%)	2 (2.2%)	3 (3.3%)	
Lymphadenectomy				.240
No	13 (14.4%)	4 (4.4%)	7 (7.8%)	
Yes	37 (41.1%)	19 (21.1%)	10 (11.1%)	

BMI=body mass index, CA19-9=carbohydrate antigen 19-9, CBD=common bile duct, CEA=carcinoembryonic antigen, NLR=neutrophil-to-lymphocyte ratio, PLR=platelet-to-lymphocyte ratio, PNI=(10 × albumin) + (0.005 × total lymphocyte count), PNI=Onodera prognostic nutrition index, T-Bil=total bilirubin, TNM=tumor, node, metastasis classification system, WBC=white blood cell count, group I were patients with NLR < 4.33 and CA19-9 < 250.90 U/mL, group II were patients with either of NLR ≥ 4.33 or CA19-9 ≥ 250.90 U/mL, group III were patients with NLR ≥ 4.33 and CA19-9 ≥ 250.90 U/mL.

\*  $\chi^2$  test or Kruskal–Wallis test.

NLR  $\geq 4.33$  and CA19-9  $\geq 250.90$  U/mL were group III. For Tis and T1a GBC, simple cholecystectomy is an appropriate treatment to obtain curative resection. For T1b-T4 GBC, radical surgery was performed with curative intent. When tumor had invaded the surrounding organs including common bile duct (CBD), colon, and omentum, the goal of surgical intervention was to achieve a negative margin. In this study, we did not include patients with vascular resection and reconstruction.

### 2.3. Definition of margin status and follow-up

The definition for R0 margin status was a radical resection without the microscopic involvement. Microscopic and macroscopic residual tumor was defined as R1 and R2, respectively. Follow-up of patients were performed through outpatient visit or by telephone. The overall survival (OS) period was defined as the interval from the date of the initial diagnosis of GBC to death or last followed-up. Patients who were alive at the last visit (May 2017) were considered the censored data.

### 2.4. Statistical analysis

Continuous variables were presented as the mean  $\pm$  standard deviation (SD) and were analyzed using Student *t* test or Kruskal–Wallis test. Categorical variables were expressed as numbers and percentages and were compared by Pearson  $\chi^2$  test and Fisher

exact test. Univariate analysis was performed to evaluate the prognostic relevance of preoperative parameters. The multivariate Cox regression proportional hazard model was used to assess variables significant on univariate analysis. Survival was estimated using the Kaplan–Meier method compared by the log-rank test.  $P < .05$  was considered statistically significant in all analyses. The Statistical analysis was carried out with the SPSS version 16.0 (SPSS Inc, Chicago, IL).

## 3. Results

In our study, 90 patients who underwent surgery with curative intent for GBC were included. There were 64 females (71.1%) and 26 males (28.9%). The mean values of all serum parameters and the results of univariate analysis of OS are shown in Table 1. We used mean value as the cutoff point of each parameter. The cutoff values of NLR and CA19-9 were 4.33 and 250.90 U/mL, respectively. The univariate analysis demonstrated that CA19-9 ( $P < .001$ ), NLR ( $P < .001$ ), PNI ( $P = .001$ ), TNM (tumor, node, metastasis classification system) stage ( $P < .001$ ), lymph node metastasis ( $P < .001$ ), the degree of tumor differentiation ( $P < .001$ ), margin status ( $P < .001$ ), and combined hepatectomy ( $P = .001$ ) were significant prognostic factors (Table 1). Therefore, the above factors were related to the survival of patients with GBC. The multivariate analysis indicated that NLR (hazard ratio (HR) = 3.840,  $P < .001$ ), CA19-9 (HR = 2.230,  $P = .004$ ), TNM stage (HR = 3.864,  $P < .001$ ), lymph node metastasis (HR = 1.679,

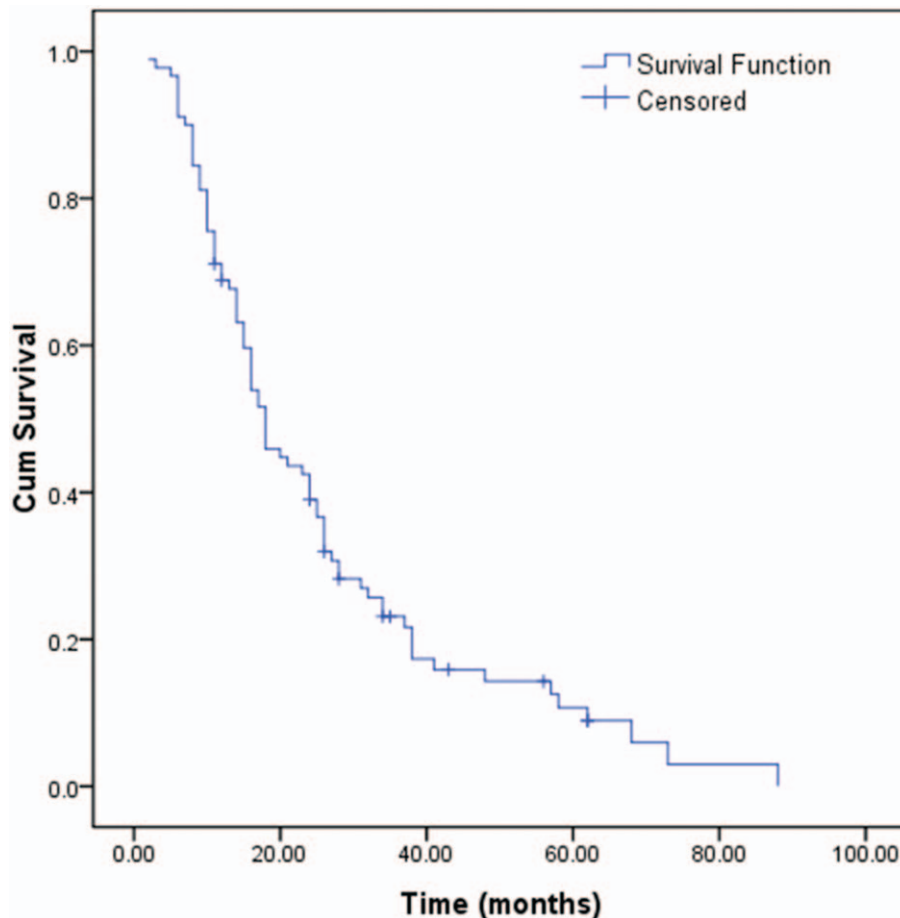


Figure 1. Overall survival of gallbladder carcinoma.

$P=.048$ ), and margin status ( $HR=1.873$ ,  $P=.030$ ) were independent prognostic factors in the patients with GBC (Table 2).

**3.1. Clinical pathological factors of patients with  $NLR < 4.33$  compared with  $NLR \geq 4.33$**

The relationship between clinical pathological factors and NLR is presented in Table 3. There was no significant difference in sex, age, BMI, hemoglobin, platelet count, total bilirubin, CEA, combined hepatectomy, combined CBD resection, and lymphadenectomy of the patients with high NLR group compared with low NLR group ( $P > .05$ ). However, with respect to WBC count, CA19-9, PNI, PLR, TNM stage, lymph node metastasis, the degree of tumor differentiation and margin status, there were significant difference between the high and low NLR groups ( $P < .05$ ).

**3.2. Clinical pathological factors of patients with  $CA19-9 < 250.90 u/mL$  compared with  $CA19-9 \geq 250.90 u/mL$**

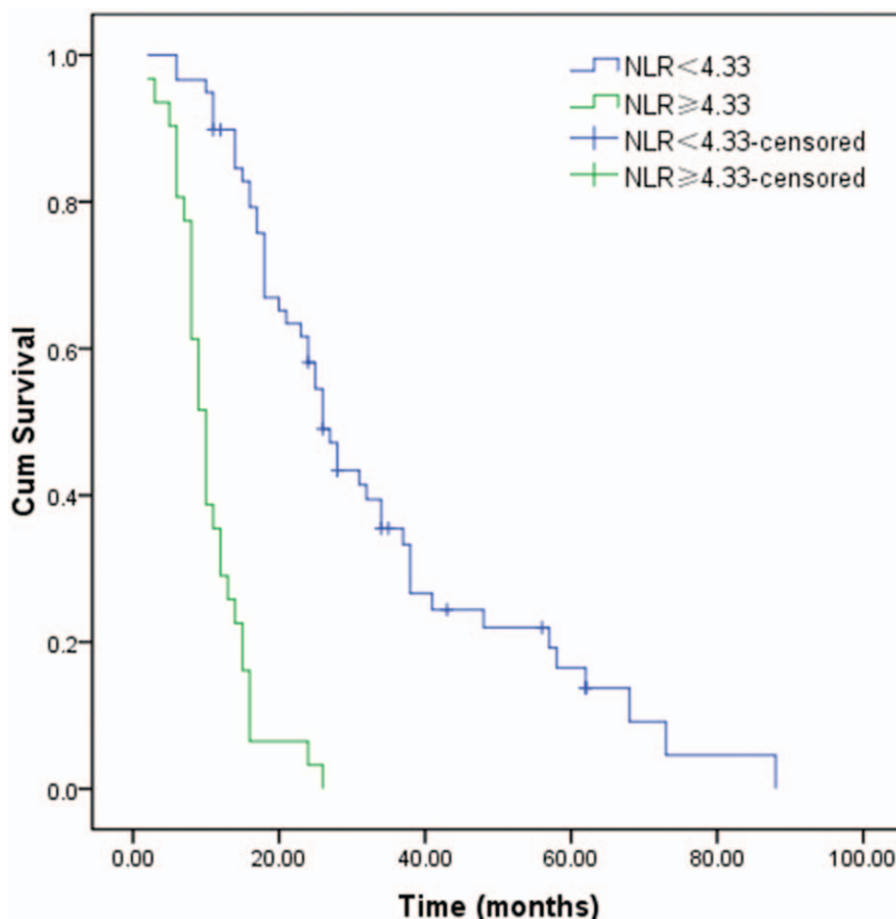
There was no significant difference in sex, age, BMI, hemoglobin, WBC count, platelet count, total bilirubin, CEA, lymph node metastasis, combined hepatectomy, combined CBD resection, and lymphadenectomy between the high CA19-9 group and low CA19-9 group ( $P > .05$ ) (Table 4). In contrast, we found significant differences in NLR, PNI, PLR, TNM stage, the degree of tumor differentiation, and margin status of the patients with high CA19-9 group compared with low CA 19-9 group ( $P < .05$ ) (Table 4).

**3.3. Comparison of clinical pathological factors of GBC patients grouped according to NLR and CA19-9**

The results indicated that there was no significant difference in sex, age, BMI, hemoglobin, WBC count, platelet count, total bilirubin, combined hepatectomy, combined CBD resection, and lymphadenectomy for each group ( $P > .05$ ). However, we found significant differences in CEA, PNI, PLR, TNM stage, lymph node metastasis, the degree of tumor differentiation, and margin status for each group ( $P < .05$ ) (Table 5).

**3.4. Survival analysis**

During the follow-up, 79 patients (87.8%) died and 11 (12.2%) were censored at the last follow-up. Among the entire cohort, the 1-, 3-, and 5-year OS were 68.9%, 23.1%, and 10.7%, respectively (Fig. 1). Patients in the low NLR group (26 months) had a better median survival time compared with patients in the high NLR group (10 months;  $P < .001$ , Fig. 2). Similar to NLR groups, we found patients in the low CA19-9 group (25 months) had a better median survival time compared with patients in the high CA19-9 group (10 months;  $P < .001$ , Fig. 3). Moreover, the median survival times in the high NLR and high CA19-9 group (group I) and the low NLR and low PLR group (group III) were 28 months and 9 months, respectively. Comparison of postoperative survival between 2 groups showed statistical significance ( $P < .001$ , Fig. 4).



**Figure 2.** The univariate survival analysis for the survival time of patients in the low ( $NLR < 4.33$ ) and high ( $NLR \geq 4.33$ ) NLR group by Kaplan–Meier ( $P < .001$ ). NLR = neutrophil-lymphocyte ratio.

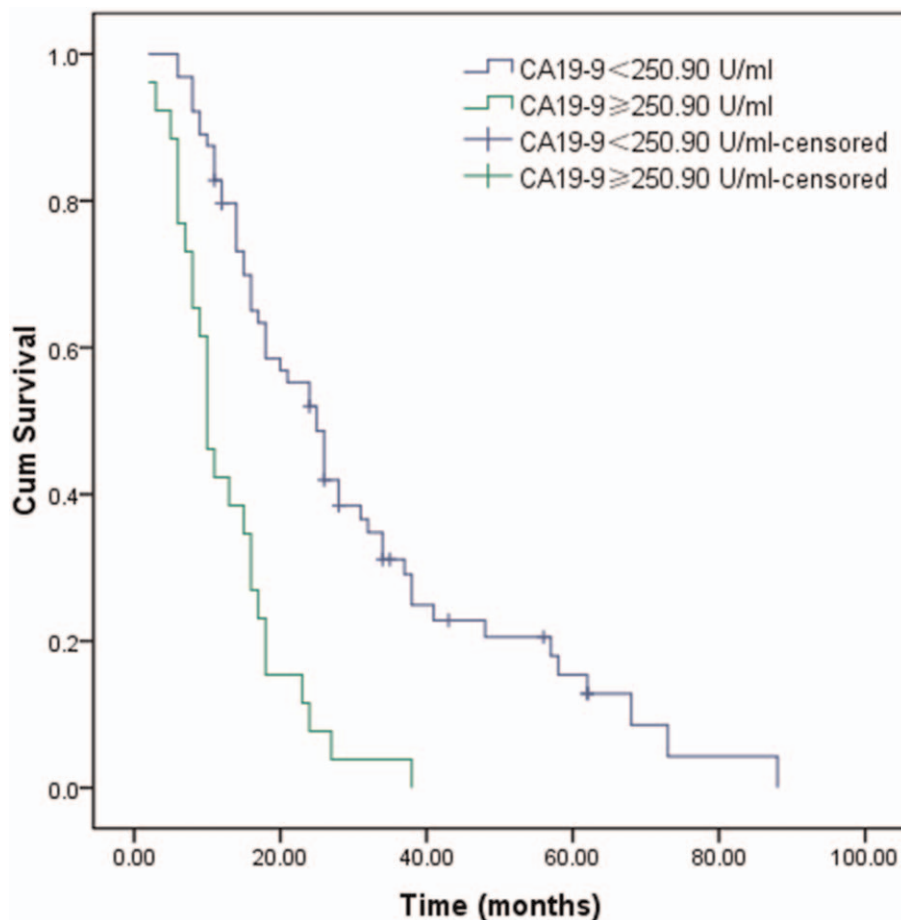
#### 4. Discussion

Prognosis for GBC is typically poor. The most accurate and effective predictor of long-term survival for postoperative GBC patients is currently pathological TNM stage. However, it can only be properly assessed after surgery. In recent years, some other clinical pathological factors have been found to be related to GBC prognosis and metastasis.<sup>[17]</sup> However, it remains controversial whether they have a good clinical significance. Furthermore, it needs to be pointed out these also can only be evaluated postoperatively. In our study, we evaluated the preoperative parameters to predict subsequent prognosis after surgery for GBC. Our study demonstrated that elevated NLR and CA19-9 values can be the simple and effective means of predicting the prognosis of GBC before surgery. We found that the baseline NLR and CA19-9 (mean value) in our institute were independent prognostic determinants for OS (NLR, HR 3.840, 95% CI: 2.122–6.947,  $P < .001$ ; CA19-9, HR 2.230, 95% CI: 1.297–3.835,  $P = .004$ ). Compared with TNM stage, NLR and CA19-9 as prognostic markers in clinical practice have many advantages, such as easy measurement, good replicability and low cost, application in preoperative assessment, and so on.

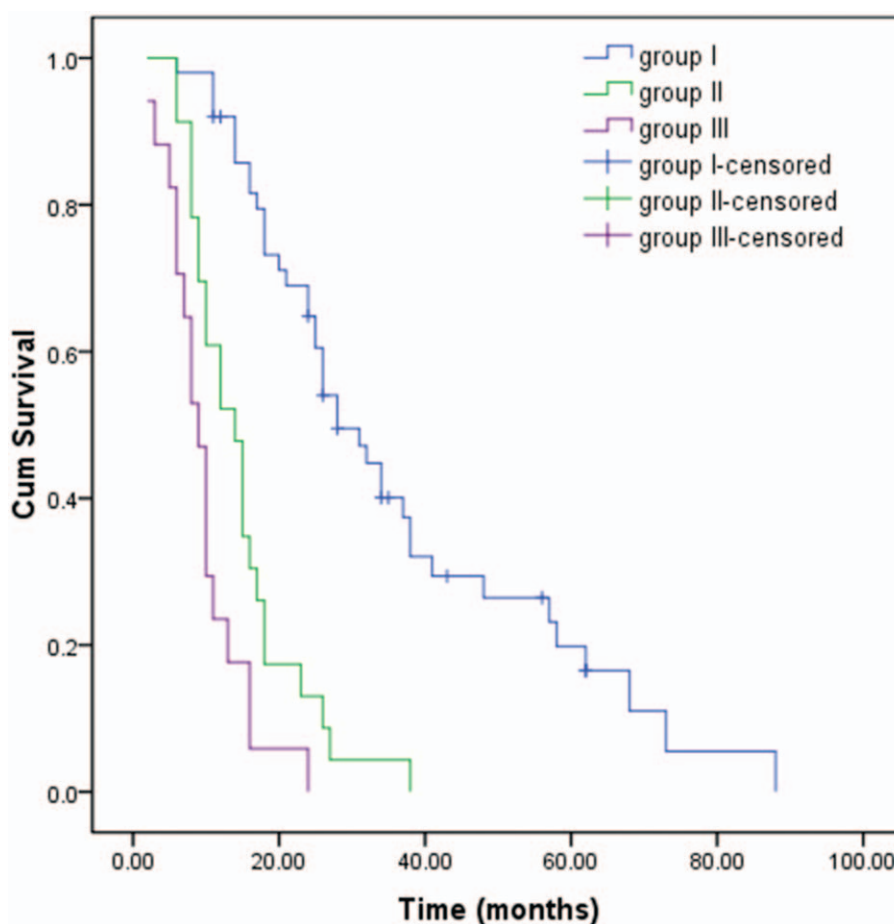
In our study, we found the preoperative NLR was an important independent prognostic factor of GBC patient. Neutrophils play pivotal roles in tumorigenesis and have a significant impact on the microenvironment of tumor. It can produce various cytokines

and chemokines, which influence the activation and recruitment of inflammatory cells and play an important role in tumor cell proliferation and metastasis.<sup>[18]</sup> In contrast, lymphocytes can monitor the immune system of tumors and also prevent tumor cells from maturing.<sup>[19]</sup> It has been reported that the reduction of total lymphocytes in blood is an indicator of adverse outcomes in patients with pancreatic cancer.<sup>[20]</sup> In other words, NLR is an amplified risk factor for predicting of the systematic inflammation conditions. Consistently, NLR has been shown to be a potential prognostic factor in various tumors including lung, breast cancer, liver, stomach, and colorectum.<sup>[21,22]</sup> The relationship between cancer progression and systemic inflammation has been supported and NLR is getting more attractive, because NLR is readily measurable in peripheral blood and directly reflects the systemic host inflammatory response.

NLR is related to GBC prognosis and is a potential prognostic indicator for GBC. Zhang et al<sup>[9]</sup> investigated the importance of NLR in 316 GBC patients. The authors established 2.61 as the cutoff value of NLR, and their results demonstrated that NLR was a prognostic indicator for patients with GBC. Beal et al<sup>[23]</sup> analyzed the data of 187 patients and concluded that NLR was associated with the prognosis of GBC patients. Zhang et al<sup>[24]</sup> reported NLR and PLR were closely associated with the prognosis of GBC patients. The cutoff values of NLR in the Zhang, Beal, and Zhang studies were 2.61, 5.0, and 1.94,



**Figure 3.** The univariate survival analysis for the survival time of patients in the low (CA19-9 < 250.90 U/mL) and high (CA19-9 ≥ 250.90 U/mL) CA19-9 group by Kaplan–Meier ( $P < .001$ ).



**Figure 4.** Patients were divided into 3 groups according to NLR and CA19-9. Kaplan-Meier survival curves of gallbladder carcinoma patients with different groups ( $P < .001$ ).

respectively. There is still considerable variation about which cutoff value of NLR can be used to stratify the treatment option. This may be attributed to differences in study population, primary site of cancer, and whether values relate to patients following curative resection. In our study, we determined a threshold value of mean value (4.33) as the cutoff value. The multivariate analysis demonstrated that there was a significant correlation between  $\text{NLR} \geq 4.33$  and poor clinical outcome. Moreover, it highlighted the independent value of this parameter. Additional studies are required for final establishment of the optimal cutoff value of NLR for clinical application.

CA19-9 is a tumor-associated antigen, initially reported by Koprowski et al.<sup>[25]</sup> It has been shown that CA19-9 is a prognostic indicator in GBC.<sup>[26]</sup> However, the optimal cutoff value has remained controversial. In our analysis, we used 250.90 U/mL as the cutoff point of CA19-9. In multivariate analysis, it was proven to be an independent prognostic factor. Moreover, Selvakumar et al.<sup>[27]</sup> demonstrated that surgery after neoadjuvant chemotherapy was workable and might improve survival in selected patients. Another study reported that neoadjuvant therapy in unresectable GBC resulted in a 15% resectability rate.<sup>[28]</sup> The use of CA19-9 might provide opportunity for guiding personalized neoadjuvant therapy in patients with GBC.

Based on the combined utilization of NLR and CA19-9, individualized prediction of postoperative prognosis was available, such as good in group I, moderate in group II, and dismal in group III. In patients with elevation of NLR and CA19-9 (group III,

dismal), implementation of aggressive procedures should be carefully evaluated, considering the decreased prognostic benefits and increased postoperative morbidity. On the contrary, in patients without elevation of either NLR or CA19-9 (group I, good), surgeons should not easily make concessions to palliative resection, even when the invasion is extended on radiological imaging.

In previous studies, it has been reported that higher TNM stage, lymph node metastasis, and a positive resection margin predict poor denouement in GBC patients.<sup>[29]</sup> Patients were divided into stage T1/T2 and stage T3/T4 groups because of the small study group. Our study supports these findings because we found significantly lower survival in stage T3/T4, tumors with lymph node metastasis, and patients with R1 resection. This was confirmed by Cox regression analyses, indicating that TNM stage, lymph node metastasis, and margin status were independent prognostic determinants for OS (TNM stage, HR 3.864, 95% CI: 1.819–8.207,  $P < .001$ ; lymph node metastasis, HR 1.679, 95% CI: 1.005–2.805,  $P = .048$ ; margin status, HR 1.873, 95% CI: 1.063–3.300,  $P = .030$ ). Some authors reported that lymph node status has always been one of the strongest predictors of a poor prognosis in postoperative GBC.<sup>[30,31]</sup> Lymph node metastases are common for GBC. The incidence of lymph node metastases increases along with the T stage, reaching 60% to 80% in stage T3–4.<sup>[32,33]</sup> Lymph node status has been conventionally described in 3 ways: location of the metastatic lymph node, number of metastatic lymph nodes, and ratio of metastatic lymph nodes to the number of retrieved lymph

nodes.<sup>[34]</sup> A study by Amini et al.<sup>[35]</sup> demonstrated that among the patients who had 4 or more lymph nodes examined, the log odds of metastatic lymph node had the best discrimination ability. Curative resection is the only effective treatment for GBC. In our study, margin status was an independent prognostic factor for OS. As expected, patients with R1 resection had a significantly worse survival than R0 resection. Therefore, we believe that R0 resection should be attempted whenever possible on the premise of ensuring patient safety.

However, there were some limitations to be taken into account in the present study. First, our study was performed in a retrospective design. Second, it was a single-center sample size. Furthermore, our study did not integrate NLR, CA19-9, and other statistically significant variables into a new equation to increase the sensitivity and specificity, and it lacked a validation group for consolidation. Further multicenter, larger prospective studies are required to validate our findings. Meanwhile, the cutoff values of preoperative NLR and CA19-9 should be determined in a prospective manner. Further studies should also focus on proposing equations to improve the sensitivity and specificity of NLR, CA19-9 and other statistically significant variables, and establishing validation group for consolidation.

In conclusion, the preoperative NLR and CA19-9 in our institute were independent prognostic determinants for OS. That is to say, the preoperative NLR and CA19-9 are associated with prognosis of GBC patients and may be useful for the evaluation of prognosis of patients with GBC. High NLR and high CA19-9 were predictors of poor long-term outcome among patients with GBC undergoing curative surgery. Further independent prospective trials should be requested to confirm these results.

### Author contributions

FL and H-JH contributed to the data acquisition and drafted the manuscript. W-JM, QY, and J-KW contributed to data acquisition. F-YL contributed to the study design and revised the manuscript. Manuscript is approved by all authors for publication.

**Conceptualization:** Fu-yu Li.

**Data curation:** Wen-Jie Ma, Qin Yang, Jun-Ke Wang.

**Writing – original draft:** Fei Liu, Hai-Jie Hu.

### References

- Sharma A, Sharma KL, Gupta A, et al. Gallbladder cancer epidemiology, pathogenesis and molecular genetics: recent update. *World J Gastroenterol* 2017;23:3978–98.
- Liu YB, He XW, Wang JW, et al. Establishment of liver metastasis model of human gallbladder cancer and isolation of the subpopulation with high metastatic potential. *Zhonghua Yi Xue Za Zhi* 2006;86:2117–21.
- Ito H, Matros E, Brooks DC, et al. Treatment outcomes associated with surgery for gallbladder cancer: a 20-year experience. *J Gastrointest Surg* 2004;8:183–90.
- Puhalla H, Wild T, Bareck E, et al. Long-term follow-up of surgically treated gallbladder cancer patients. *Eur J Surg Oncol* 2002;28:857–63.
- Batra Y, Pal S, Dutta U, et al. Gallbladder cancer in India: a dismal picture. *J Gastroenterol Hepatol* 2005;20:309–14.
- Manfredi S, Benhamiche AM, Isambert N, et al. Trends in incidence and management of gallbladder carcinoma: a population-based study in France. *Cancer* 2000;89:757–62.
- Zeng H, Zheng R, Guo Y, et al. Cancer survival in China, 2003–2005: a population-based study. *Int J Cancer* 2015;136:1921–30.
- Agrawal S, Lawrence A, Saxena R. Does CA 19-9 have prognostic relevance in gallbladder carcinoma (GBC)? *J Gastrointest Cancer* 2018;49:144–9.
- Zhang L, Wang R, Chen W, et al. Prognostic significance of neutrophil to lymphocyte ratio in patients with gallbladder carcinoma. *HPB (Oxford)* 2016;18:600–7.
- Jeong JH, Lim SM, Yun JY, et al. Comparison of two inflammation-based prognostic scores in patients with unresectable advanced gastric cancer. *Oncology* 2012;83:292–9.
- He W, Yin C, Guo G, et al. Initial neutrophil lymphocyte ratio is superior to platelet lymphocyte ratio as an adverse prognostic and predictive factor in metastatic colorectal cancer. *Med Oncol* 2013;30:439.
- Shukla VK, Gurubachan, Sharma D, et al. Diagnostic value of serum CA242, CA 19-9, CA 15-3 and CA 125 in patients with carcinoma of the gallbladder. *Trop Gastroenterol* 2006;27:160–5.
- Luo G, Jin K, Cheng H, et al. Carbohydrate antigen 19-9 as a prognostic biomarker in pancreatic neuroendocrine tumors. *Oncol Lett* 2017;14:6795–800.
- Feng F, Tian Y, Xu G, et al. Diagnostic and prognostic value of CEA, CA19-9, AFP and CA125 for early gastric cancer. *BMC Cancer* 2017;17:737.
- Regimbeau JM, Fuks D, Bachellier P, et al. Prognostic value of jaundice in patients with gallbladder cancer by the AFC-GBC- 2009 study group. *Eur J Surg Oncol* 2011;37:505–12.
- Edge SB, Byrd DR, Compton CC, et al. *AJCC Cancer Staging Manual*, 7th ed. New York, NY: Springer; 2010.
- Wang JW, Peng SY, Li JT, et al. Identification of metastasis-associated proteins involved in gallbladder carcinoma metastasis by proteomic analysis and functional exploration of chloride intracellular channel 1. *Cancer Lett* 2009;281:71–81.
- Gregory AD, Houghton AM. Tumor-associated neutrophils: new targets for cancer therapy. *Cancer Res* 2011;71:2411–6.
- Dunn GP, Old LJ, Schreiber RD. The immunobiology of cancer immunosurveillance and immunoediting. *Immunity* 2004;21:137–48.
- Fogar P, Sperti C, Basso D, et al. Decreased total lymphocyte counts in pancreatic cancer: an index of adverse outcome. *Pancreas* 2006;32:22–8.
- Halazun KJ, Hardy MA, Rana AA, et al. Negative impact of neutrophil-lymphocyte ratio on outcome after liver transplantation for hepatocellular carcinoma. *Ann Surg* 2009;250:141–51.
- Kishi Y, Kopetz S, Chun YS, et al. Blood neutrophil-to-lymphocyte ratio predicts survival in patients with colorectal liver metastases treated with systemic chemotherapy. *Ann Surg Oncol* 2009;16:614–22.
- Beal EW, Wei L, Ethun CG, et al. Elevated NLR in gallbladder cancer and cholangiocarcinoma—making bad cancers even worse: results from the US Extrahepatic Biliary Malignancy Consortium. *HPB (Oxford)* 2016;18:950–7.
- Zhang Y, Jiang C, Li J, et al. Prognostic significance of preoperative neutrophil/lymphocyte ratio and platelet/lymphocyte ratio in patients with gallbladder carcinoma. *Clin Transl Oncol* 2015;17:810–8.
- Koprowski H, Steplewski Z, Mitchell K, et al. Colorectal carcinoma antigens detected by hybridoma antibodies. *Somatic Cell Genet* 1979;5:957–71.
- Hong EK, Kim KK, Lee JN, et al. Surgical outcome and prognostic factors in patients with gallbladder carcinoma. *Korean J Hepatobiliary Pancreat Surg* 2014;18:129–37.
- Selvakumar VP, Zaidi S, Pande P, et al. Resection after neoadjuvant chemotherapy in advanced carcinoma of the gallbladder: a retrospective study. *Indian J Surg Oncol* 2015;6:16–9.
- Agrawal S, Mohan L, Mourya C, et al. Radiological downstaging with neoadjuvant therapy in unresectable gall bladder cancer cases. *Asian Pac J Cancer Prev* 2016;17:2137–40.
- Bartlett DL, Fong Y, Fortner JG, et al. Long-term results after resection for gallbladder cancer. Implications for staging and management. *Ann Surg* 1996;224:639–46.
- Miura F, Asano T, Amano H, et al. New prognostic factor influencing long-term survival of patients with advanced gall-bladder carcinoma. *Surgery* 2010;148:271–7.
- Shimada H, Endo I, Fujii Y, et al. Appraisal of surgical resection of gallbladder cancer with special reference to lymph node dissection. *Langenbecks Arch Surg* 2000;385:509–14.
- Miyakawa S, Ishihara S, Horiguchi A, et al. Biliary tract cancer treatment: 5,584 results from the Biliary Tract Cancer Statistics Registry from 1998 to 2004 in Japan. *J Hepatobiliary Pancreat Surg* 2009;16:1–7.
- Fong Y, Wagman L, Gonen M, et al. Evidence-based gallbladder cancer staging: changing cancer staging by analysis of data from the National Cancer Database. *Ann Surg* 2006;243:767–71.
- Sakata J, Shirai Y, Wakai T, et al. Number of positive lymph nodes independently determines the prognosis after resection in patients with gallbladder carcinoma. *Ann Surg Oncol* 2010;17:1831–40.
- Amini N, Kim Y, Wilson A, et al. Prognostic implications of lymph node status for patients with gallbladder cancer: a multi-institutional study. *Ann Surg Oncol* 2016;23:3016–23.