

CORRIGENDUM

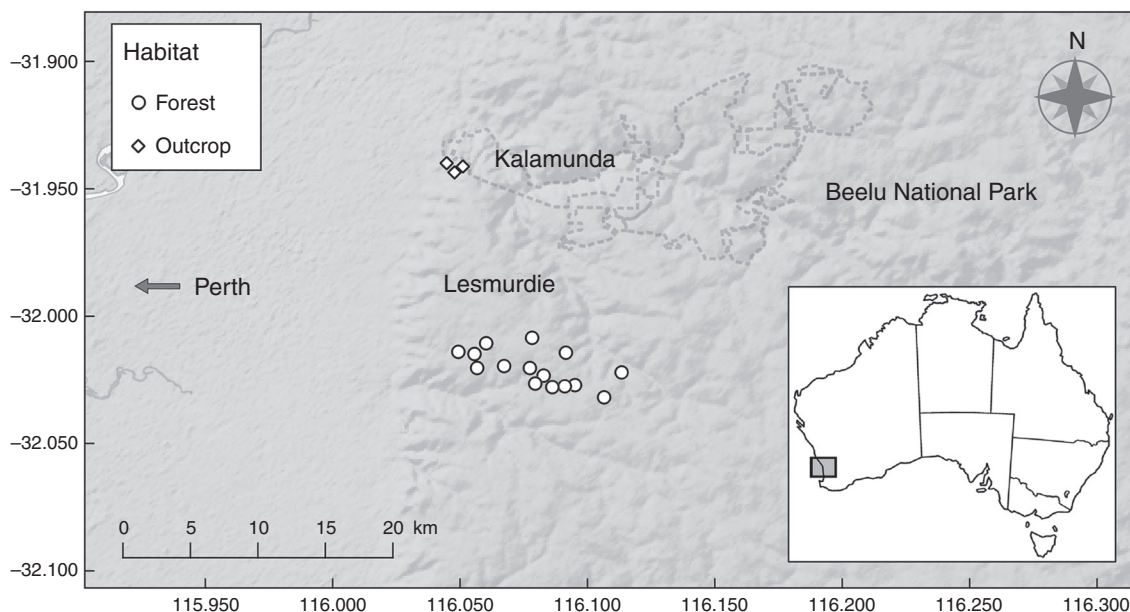
Masquerading as pea plants: behavioural and morphological evidence for mimicry of multiple models in an Australian orchid

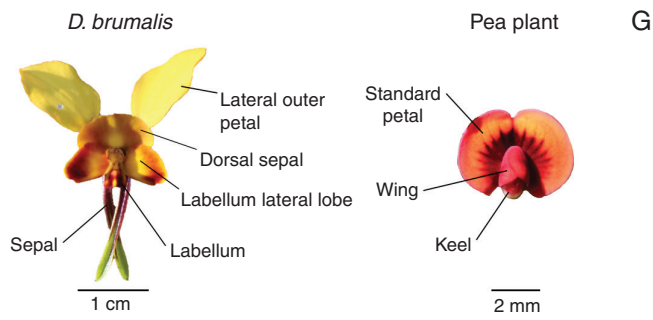
Daniela Scaccabarrozi, Salvatore Cozzolino, Lorenzo Guzzetti, Andrea Galimberti, Lynne Milne, Kingsley W. Dixon and Ryan D. Phillips

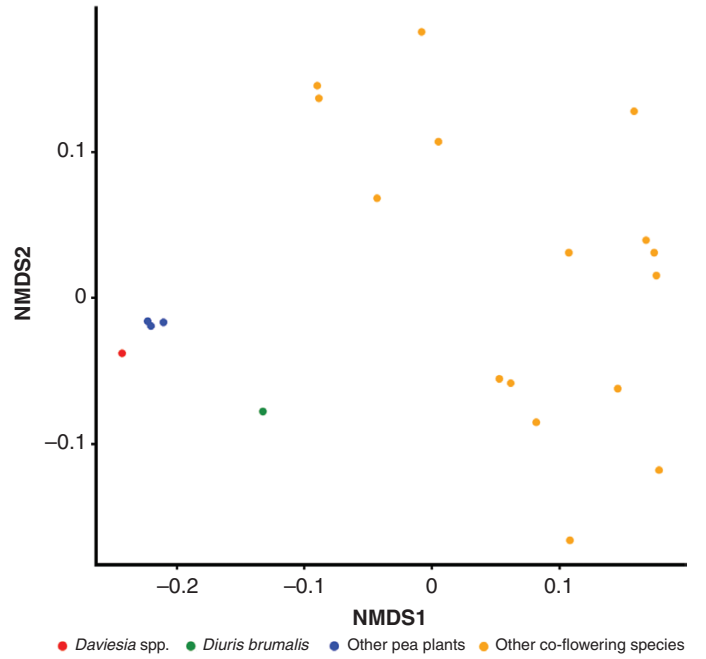
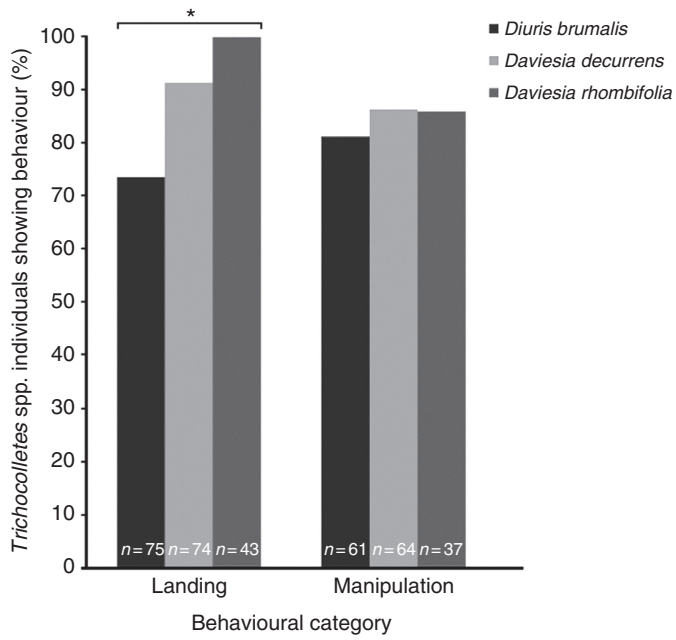
Annals of Botany doi: 10.1093/aob/mcy166

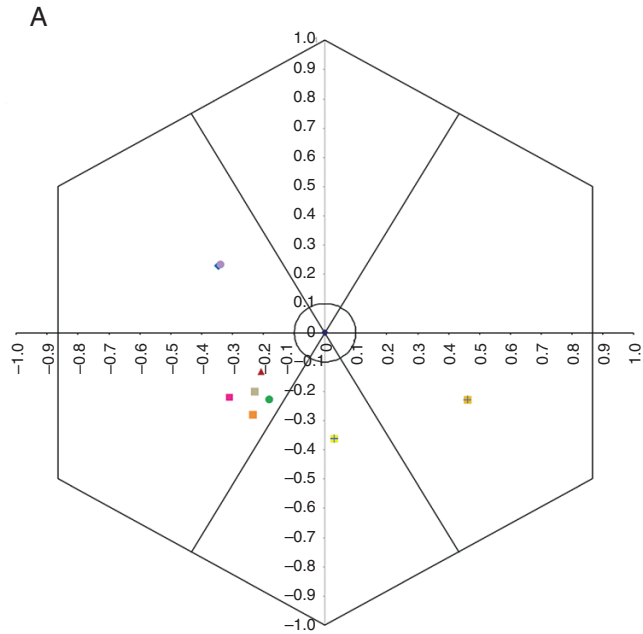
The following corrections have been made in this article:

- Figure 2G: the name of ‘Labellum wing’ in ‘Labellum lateral lobe’ has been replaced.
- Figure 6B caption: ‘LW = lateral wing’ has been replaced with ‘LL= Labellum lateral lobe’
- Figure 2 caption: ‘Fabaceae’ has been replaced with ‘Faboideae’
- Page 5.77: the integration time for the colour measurements is in milliseconds not ‘nm’
- Figure 4 caption: ‘indicates the significative difference’ has been replaced with ‘indicates a significant difference’
- Figure 5 caption: the word ‘site’ has been removed
- Figure 6 caption: the opening sentence has been changed from ‘Mean values of colour loci calculated between floral parts for the species’ to ‘Mean values of colour loci calculated for floral parts of *Daviesia*....’
- Page 10.15: the words ‘Being deceived into’ have been removed from the sentence ‘Exhibiting specific behaviours typically associated with the model species provides strong evidence that the proposed mimic has deceived the operator’
- Page 10.70: ‘labellum wing’ has been replaced with ‘labellum lateral lobe’
- Page 10.31: the word ‘filaments’ has been replaced with ‘anthers’

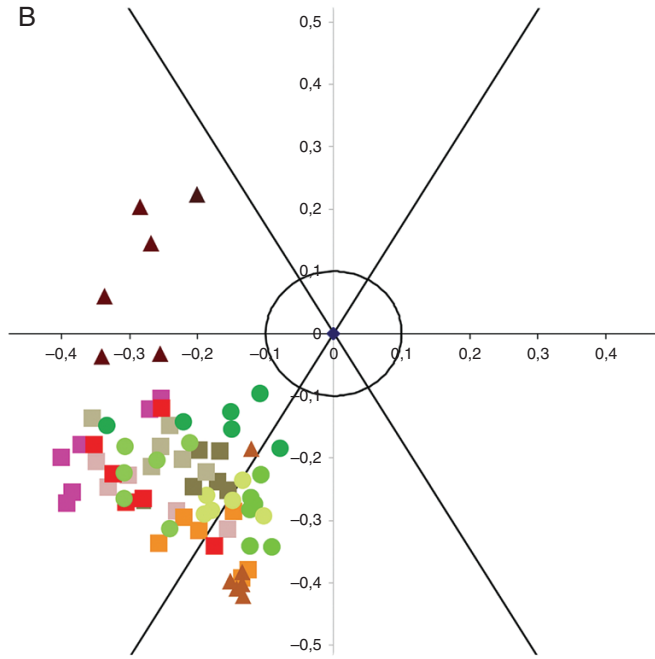








- *Acacia pulchella*
- ▲ *Bossiaea aquifolium*
- *Daviesia decurrens*
- *Daviesia horrida*
- *Daviesia rhombifolia*
- *Diuris brumalis*
- *Hibbertia hypericoides*
- ◆ *Hovea chorizemifolia*
- *Hovea pungens*



- ▲ *Bossiaea aquifolium* SP
- ▲ *Bossiaea aquifolium* W
- *Daviesia decurrens* SP
- *Daviesia decurrens* W
- *Daviesia rhombifolia* SP
- *Daviesia rhombifolia* W
- *Daviesia horrida* SP
- *Daviesia horrida* W
- *Diuris brumalis* LOP
- *Diuris brumalis* DS
- *Diuris brumalis* LL
- *Diuris brumalis* L

