

ORIGINAL INVESTIGATIONS

Detection and Prediction of Bioprosthetic Aortic Valve Degeneration



Timothy R.G. Carlidge, MD,^a Mhairi K. Doris, MD,^a Stephanie L. Sellers, PhD,^b Tania A. Pawade, MD,^a Audrey C. White,^a Renzo Pessotto, MD,^a Jacek Kwiecinski, MD,^a Alison Fletcher, PhD,^c Carlos Alcaide, MSc,^a Christophe Lucatelli, PhD,^c Cameron Densem, MD,^d James H.F. Rudd, MD,^e Edwin J.R. van Beek, MD,^c Adriana Tavares, PhD,^a Renu Virmani, MD,^f Daniel Berman, MD,^g Jonathon A. Leipsic, MD,^b David E. Newby, DSc,^a Marc R. Dweck, PhD^a

ABSTRACT

BACKGROUND Bioprosthetic aortic valve degeneration is increasingly common, often unheralded, and can have catastrophic consequences.

OBJECTIVES The authors sought to assess whether ¹⁸F-fluoride positron emission tomography (PET)-computed tomography (CT) can detect bioprosthetic aortic valve degeneration and predict valve dysfunction.

METHODS Explanted degenerate bioprosthetic valves were examined ex vivo. Patients with bioprosthetic aortic valves were recruited into 2 cohorts with and without prosthetic valve dysfunction and underwent in vivo contrast-enhanced CT angiography, ¹⁸F-fluoride PET, and serial echocardiography during 2 years of follow-up.

RESULTS All ex vivo, degenerate bioprosthetic valves displayed ¹⁸F-fluoride PET uptake that colocalized with tissue degeneration on histology. In 71 patients without known bioprosthetic dysfunction, 14 had abnormal leaflet pathology on CT, and 24 demonstrated ¹⁸F-fluoride PET uptake (target-to-background ratio 1.55 [interquartile range (IQR): 1.44 to 1.88]). Patients with increased ¹⁸F-fluoride uptake exhibited more rapid deterioration in valve function compared with those without (annualized change in peak transvalvular velocity 0.30 [IQR: 0.13 to 0.61] vs. 0.01 [IQR: -0.05 to 0.16] ms⁻¹/year; *p* < 0.001). Indeed ¹⁸F-fluoride uptake correlated with deterioration in all the conventional echocardiographic measures of valve function assessed (e.g., change in peak velocity, *r* = 0.72; *p* < 0.001). Each of the 10 patients who developed new overt bioprosthetic dysfunction during follow-up had evidence of ¹⁸F-fluoride uptake at baseline (target-to-background ratio 1.89 [IQR: 1.46 to 2.59]). On multivariable analysis, ¹⁸F-fluoride uptake was the only independent predictor of future bioprosthetic dysfunction.

CONCLUSIONS ¹⁸F-fluoride PET-CT identifies subclinical bioprosthetic valve degeneration, providing powerful prediction of subsequent valvular dysfunction and highlighting patients at risk of valve failure. This technique holds major promise in the diagnosis of valvular degeneration and the surveillance of patients with bioprosthetic valves. (18F-Fluoride Assessment of Aortic Bioprosthetic Durability and Outcome [18F-FAABULOUS]; [NCT02304276](https://clinicaltrials.gov/ct2/show/study/NCT02304276)) (J Am Coll Cardiol 2019;73:1107-19) © 2019 The Authors. Published by Elsevier on behalf of the American College of Cardiology Foundation. This is an open access article under the CC BY license (<http://creativecommons.org/licenses/by/4.0/>).



Listen to this manuscript's audio summary by Editor-in-Chief Dr. Valentin Fuster on JACC.org.

From the ^aBritish Heart Foundation Centre for Cardiovascular Science, University of Edinburgh, Edinburgh, United Kingdom; ^bEdinburgh Imaging Facility, Queen's Medical Research Institute, University of Edinburgh, Edinburgh, United Kingdom; ^cDepartment of Radiology, St. Paul's Hospital, University of British Columbia, Vancouver, British Columbia, Canada; ^dDepartment of Cardiology, Papworth Hospital NHS Foundation Trust, Cambridge, United Kingdom; ^eDivision of Cardiovascular Medicine, University of Cambridge, Cambridge, United Kingdom; ^fCVPath Institute, Gaithersburg, Maryland; and the ^gCedars-Sinai Heart Institute, Los Angeles, California. This work was supported by the British Heart Foundation, London, United Kingdom (FS/13/77/30488). The Edinburgh Clinical Research Facility and Edinburgh Imaging Facility are supported by NHS Research Scotland. Dr. Rudd is supported in part by the NIHR Cambridge Biomedical Research Centre, the British Heart Foundation, HEFCE, the EPSRC and the Wellcome Trust. Dr. van Beek is supported by the Scottish Imaging Network—a Platform for Scientific Excellence Chair of Clinical Radiology. Dr. Newby is supported by the British Heart Foundation (CH/09/002, RE/13/3/30183, RM/13/2/30158); and is the

ABBREVIATIONS AND ACRONYMS

CT = computed tomography

PET = positron emission
tomography

TBR = target-to-background
ratio

The implantation of bioprosthetic heart valves is increasing rapidly due to patient preference, the increasing prevalence of valve disease in an aging population, and the emergence of transcatheter aortic valve implantation (1-4). In the United States, 90,000 surgical aortic valve replacements are performed annually, with over three-quarters incorporating bioprosthetic valves (3). In addition, >80,000 transcatheter aortic valve implantation procedures have been performed since U.S. Food and Drug Administration approval in 2011 (4). Given the finite lifespan of these valves and the rapid expansion of the population of patients requiring regular surveillance, bioprosthetic valve degeneration will become a major cause of cardiovascular morbidity and health care burden over the coming decades.

SEE PAGE 1120

The pathophysiology of bioprosthetic valve degeneration is poorly understood. Although calcification appears to contribute to both progressive valve narrowing and leaflet tears (5-7), noninvasive methods for detecting this process have been lacking, and the triggers of valve degeneration and calcification are unknown. Current standard of care relies on serial echocardiography and clinical assessment aimed at detecting the valve dysfunction that occurs only toward the end stages of the degeneration process. Unfortunately, many patients present in extremis with unheralded valve failure due to rapid-onset valvular obstruction or regurgitation, with repeat operation a high-risk undertaking. Indeed, emergency repeat aortic valve replacement surgery is associated with a mortality of 22.6% compared with 1.4% for elective repeat surgery (8). Detection of bioprosthetic valve degeneration is therefore highly desirable, allowing at-risk patients to be identified early, offered close tailored monitoring, and optimized timing of repeat elective intervention, thereby avoiding potentially catastrophic valve failure.

¹⁸F-fluoride positron emission tomography (PET) has recently been used to image tissue calcification activity in a range of cardiovascular diseases (9-12). ¹⁸F-fluoride preferentially binds to areas of

developing microcalcification indicative of tissue degeneration (13) that precede the macrocalcification detectable by computed tomography (CT) (14,15). Given that calcification is one of the key pathological processes underlying bioprosthetic valve degeneration, we hypothesized that increased ¹⁸F-fluoride uptake would identify prosthetic valve degeneration and predict subsequent deterioration in bioprosthetic valve function.

METHODS

EX VIVO ASSESSMENT OF DEGENERATED BIOPROSTHETIC AORTIC VALVES. Explanted degenerated aortic valve bioprostheses were obtained with written consent from patients undergoing repeat surgical aortic valve replacement for bioprosthetic valve failure. Valves were weighed, photographed, and their macroscopic features documented. Ex vivo micro-PET-CT was performed with a nano-PET-CT scanner (Mediso, Budapest, Hungary) and x-ray microtomograph (Bruker, Kontich, Belgium) before undergoing histological evaluation (Online Appendix).

CLINICAL STUDY DESIGN AND POPULATION. Patients over 40 years of age who had undergone previous surgical aortic valve replacement using a bioprosthetic valve were prospectively recruited into a single-center cohort study according to defined inclusion and exclusion criteria (Online Figure 1). Participants were recruited if they were under routine clinical review and had: 1) known evidence of bioprosthetic valve failure on echocardiography and had been referred for repeat aortic valve intervention (16,17); or 2) no known evidence of valve dysfunction or degeneration. Written informed consent was obtained from all participants. The study (NCT02304276) was conducted in accordance with the Declaration of Helsinki and was approved by an NHS Scotland Research Ethics Committee (14/SS/1049) and the Administration of Radioactive Substances Advisory Committee.

STUDY ASSESSMENTS AND DATA COLLECTION. All participants underwent baseline clinical assessment including Doppler and 2-dimensional echocardiography, noncontrast CT calcium scoring, contrast-enhanced CT angiography, and in vivo ¹⁸F-fluoride

recipient of a Wellcome Trust Senior Investigator Award (WT103782AIA). Dr. Dweck is supported by the British Heart Foundation FS/14/78/31020; and is the recipient of the Sir Jules Thorn Award for Biomedical Research 2015 JTA/15. Dr. van Beek has received research support from Siemens Healthineers; has been a consultant for Imbio, Aidence NV, InHealth, and Mentholatum; and owns QCTIS Ltd. Dr. Leipsic's institution has served as an institutional core lab for Edwards Lifesciences, Abbott, and Medtronic; and has been a consultant for and holds stock options in Circle CVI and HeartFlow. All other authors have reported that they have no relationships relevant to the contents of this paper to disclose.

Manuscript received September 12, 2018; revised manuscript received November 21, 2018, accepted December 2, 2018.

PET (Online Appendix, Online Table 1). Participants were invited to return annually for 2 years for repeat clinical assessments and echocardiography to assess changes in bioprosthesis performance. Definitions of bioprosthetic degeneration and dysfunction vary, but in this study, we used definitions from both contemporary international guideline criteria (16,17) and a recent expert consensus statement (18) (Online Appendix). Bioprosthetic valve failure was defined as the development of severe hemodynamic valve dysfunction combined with patient symptoms, the need for redo valve intervention, or valve-related death (19). Patients were followed up for the development of valve failure beyond the 2-year timeframe using electronic patient record data.

PET AND CT IMAGE ANALYSIS. Fused PET and contrast-enhanced CT images were reconstructed in diastole, coregistered and reoriented to provide en face images of the bioprosthetic valve with corresponding long-axis views (Online Figure 2). Images were analyzed by 2 experienced PET-CT observers (T.R.G.C. and M.R.D.). Using pre-specified criteria, CT scans were adjudicated to be abnormal if there was pannus (circumferential low-attenuation [noncalcific] material with radial thickness ≥ 2 mm and encroachment on the valve cusps) (16,20), non-calcific leaflet thickening (focal areas of low attenuation [30 to 200 Hounsfield Units (HU)] cusp thickening ≥ 2 mm visualized in at least 2 planes) (20,21), or leaflet calcification (calcium >500 HU localized to valve cusp in ≤ 2 planes) (22). Leaflet calcification was further subdivided into spotty calcification if maximum diameter was <3 mm and large calcification if maximum diameter was ≥ 3 mm (23). ^{18}F -fluoride uptake was quantified primarily using the most-diseased-segment mean target-to-background ratio (TBR) method in keeping with prior studies of the native valve, although other measures were also reported (24). PET scans were adjudicated to be abnormal if increased ^{18}F -fluoride uptake (threshold TBR >1.3) (11) was observed originating from the valve cusps on both en face and long-axis views (Online Appendix).

STATISTICS AND DATA ANALYSIS. Baseline characteristics are reported as number (percentages) for categorical variables and mean \pm SD or median (interquartile range) for continuous variables depending on whether variables were normally distributed. Categorical data were compared using chi-square or Fisher exact tests. Continuous variables were log-transformed [$\log_N(x+1)$ for positive values and $-\log_N(-x+1)$ for negative values] where not normally distributed. The point-biserial correlation

coefficient was used to measure the strength and direction of the association between 1 dichotomous variable and 1 continuous variable. One-way analysis of variance was used to compare continuous data across multiple factors, with post hoc analysis using the Bonferroni test where appropriate. The Student's *t*-test or Mann-Whitney *U* test were used to compare continuous outcomes between 2 independent groups depending on whether they were normally distributed. The Student's *t*-test or Wilcoxon signed rank test were used to compare paired variables. Two-tailed Pearson's correlation analysis was performed to investigate the relationship between ^{18}F -fluoride uptake and echocardiographic measures of valve function. Multivariable analysis was performed to assess the predictors of deterioration in bioprosthetic valve dysfunction (annualized change in peak velocity after 2 years). Statistical analysis was undertaken using IBM SPSS Statistics version 23 software (IBM, Armonk, New York), and significance was taken at the 2-sided 5% level ($p < 0.05$).

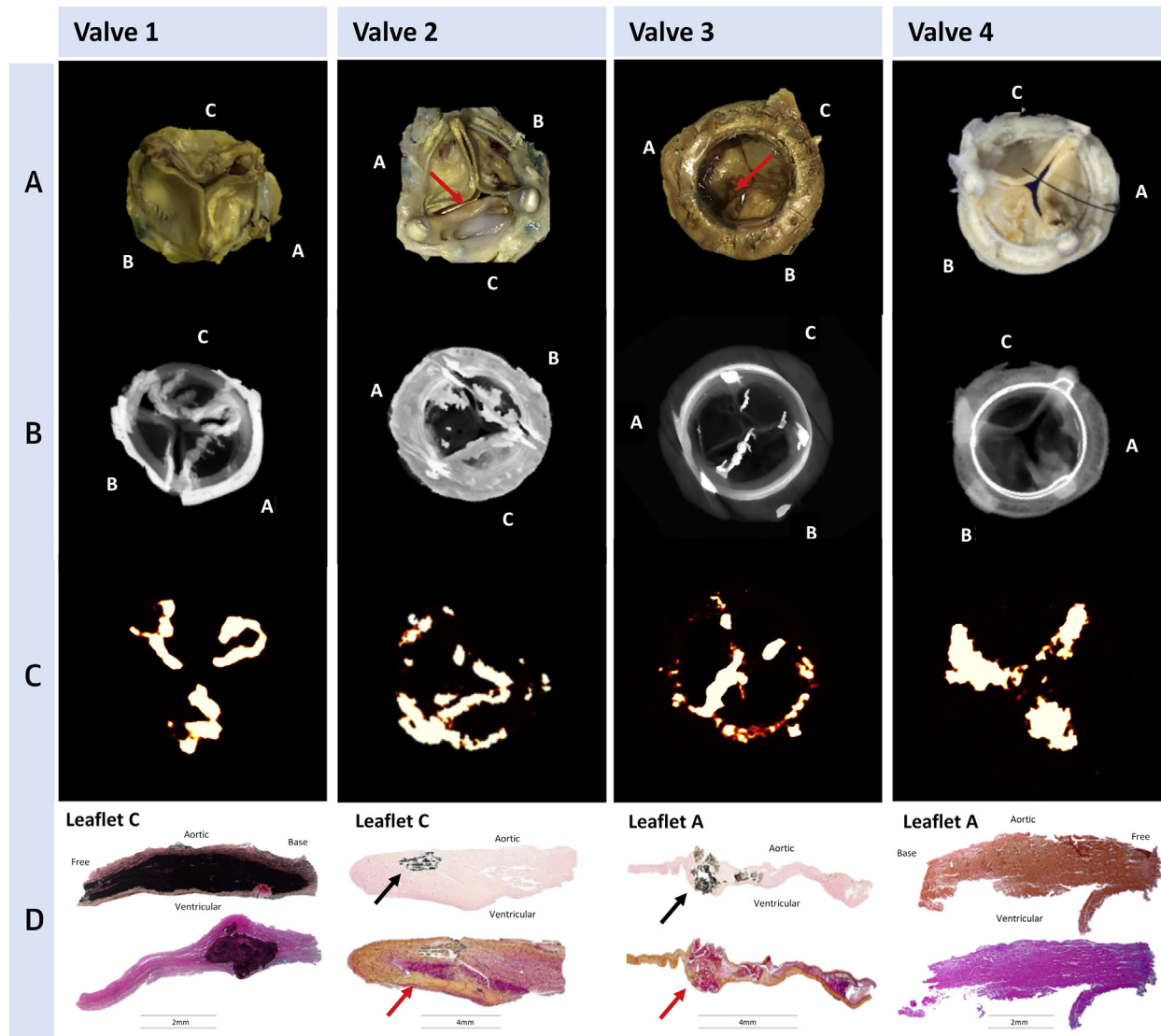
RESULTS

EXPLANTED DEGENERATE BIOPROSTHETIC AORTIC VALVES. Fifteen failed explanted bioprosthetic aortic valves were obtained (Online Appendix) for ex vivo investigation. Micro-CT detected leaflet calcification in 13 valves, which was confirmed on histology. By contrast, all 15 valves demonstrated ^{18}F -fluoride leaflet uptake that correlated with a range of histological markers of bioprosthetic tissue degeneration. In particular, ^{18}F -fluoride activity detected both micro- and macrocalcific deposits within the valve leaflets that colocalized predominantly with regions of pannus (fibrous thickening) and thrombus formation on histology. However, ^{18}F -fluoride uptake was additionally observed in the absence of calcification on histology at sites of leaflet thickening, fluid insudation, and disrupted collagen architecture (Figure 1).

CLINICAL COHORT STUDY POPULATION. Eighty participants were recruited to the clinical cohort study and underwent in vivo PET-CT imaging, although 2 patients were unable to complete the baseline scan (claustrophobia) and were excluded. The remaining 78 patients were 75 ± 7 years of age, with a range of bioprosthetic valve models (Online Tables 2 and 3), a high prevalence of coronary artery disease, and associated risk factors (Table 1).

PATIENTS WITH SUSPECTED BIOPROSTHETIC VALVE FAILURE. Seven participants were recruited to the cohort with suspected bioprosthetic valve failure. One subject proceeded to repeat surgical aortic valve replacement, 5 underwent valve-in-valve

FIGURE 1 Ex Vivo Degenerated Bioprosthetic Aortic Valves: Macroscopic Appearances, Micro-CT, Micro-PET, and Histology



(Row A) Macroscopic visual appearances of failed and explanted bioprosthetic valves. **(Row B)** CT en face images of the valves. **(Row C)** PET en face images demonstrating increased ^{18}F -fluoride uptake in all valves. **(Row D)** Histology staining of sections taken from valve leaflet as indicated, with von Kossa (**top row**, calcium appears black), Movat Pentachrome (**bottom row**, valves 1 and 4), and hematoxylin and eosin (**bottom row**, valves 2 and 3) stains. All 4 degenerate bioprostheses demonstrate increased ^{18}F -fluoride uptake in the valve leaflets. In valve 1, this uptake corresponds to gross leaflet calcification observed macroscopically and on CT images with confirmation on histology (extensive black staining). In valve 2, increased ^{18}F -fluoride uptake is observed in association with fibrotic leaflet thickening and pannus (**red arrows**) with associated calcification (**black arrows**) observed macroscopically and on CT with confirmation on histology. In valve 3, increased ^{18}F -fluoride uptake is observed at the site of valve leaflet thrombus (**red arrow**) observed macroscopically at the base of leaflet 1, with confirmation of thrombus (**red arrow**) and colocalized calcification (**black arrow**) on histology. In valve 4, extensive ^{18}F -fluoride uptake is observed in the absence of calcification on CT and histology but instead in areas of leaflet thickening, marked fluid insudation, and disrupted collagen architecture. CT = computed tomography; PET = positron emission tomography.

transcatheter valve implantation, and 1 subject was deemed to have severe patient-prosthesis mismatch according to guideline criteria and therefore not considered to have valve failure (16,17). All 6 subjects with confirmed bioprosthetic valve failure

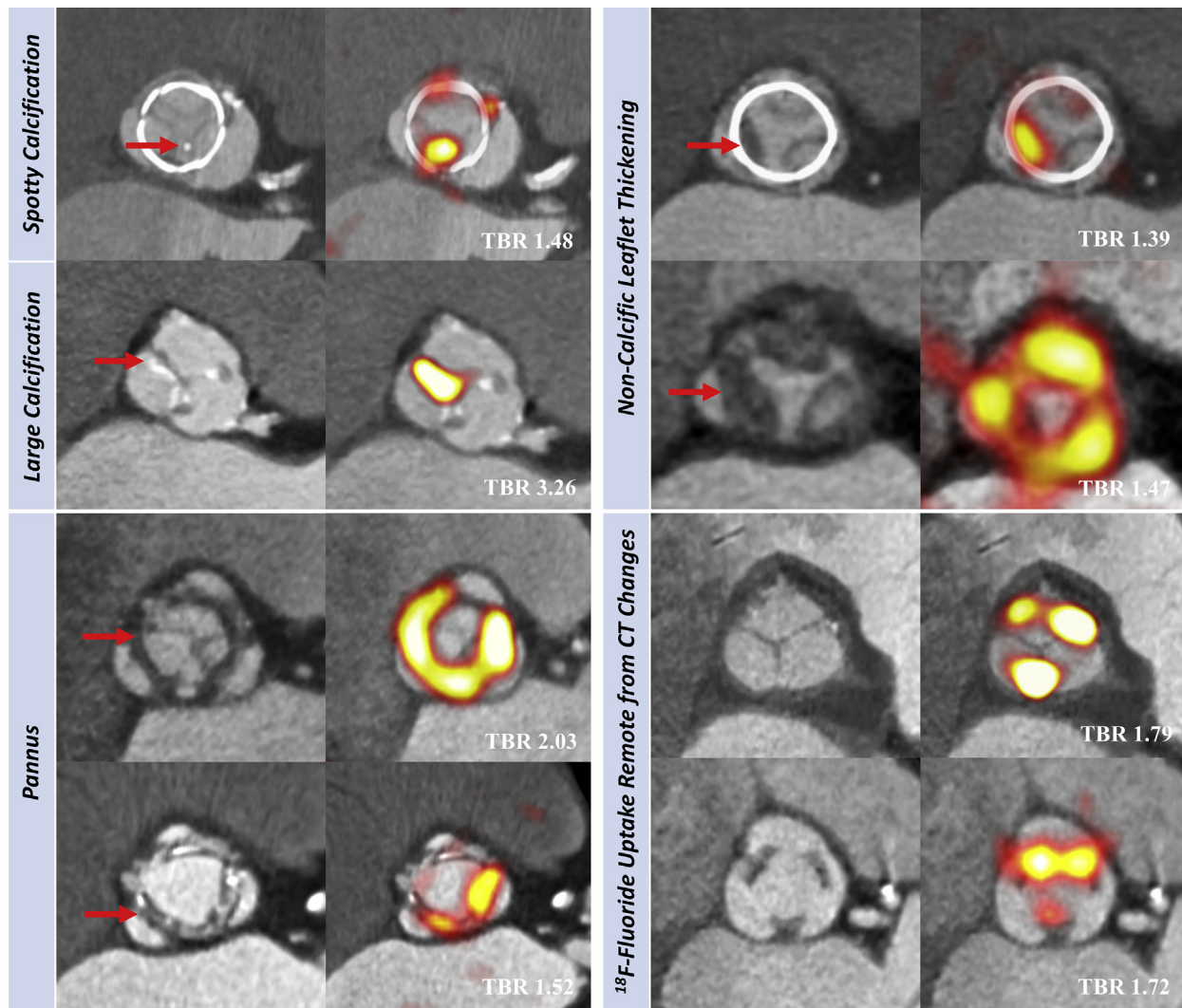
demonstrated abnormalities on both CT and ^{18}F -fluoride PET studies (Figure 2). CT revealed evidence of leaflet calcification in all patients (spotty calcification n = 3, large calcification n = 3) and less commonly noncalcific leaflet thickening (n = 2),

TABLE 1 Baseline Characteristics of the Clinical Study Population Undergoing in Vivo PET and CT Imaging

	Patients With Valve Failure	Patients Without Known Valve Degeneration				
		All	1 Month	2 Year	5 Year	10 Year
Clinical						
Subjects	6	71	9	22	20	20
Female	2 (33.3)	38 (46.5)	5 (55.6)	8 (36.4)	10 (50.0)	10 (50.0)
Age, yrs	81.3 ± 3.2	73.9 ± 7.0	73.4 ± 9.0	73.0 ± 5.4	72.7 ± 5.1	76.4 ± 8.9
Body mass index, kg/m ²	27.5 ± 4.5	26.9 ± 5.6	27.8 ± 4.7	27.7 ± 4.8	27.8 ± 5.1	24.8 ± 6.8
Systolic blood pressure, mm Hg	144.8 ± 18.0	153.8 ± 21.9	152.4 ± 21.2	149.8 ± 22.1	158.1 ± 15.2	154.5 ± 27.8
Diastolic blood pressure, mm Hg	58.0 ± 8.4	79.0 ± 11.0	82.0 ± 11.4	81.3 ± 12.0	78.6 ± 7.4	75.4 ± 12.6
Heart rate, beats/min	72.2 ± 17.0	71.2 ± 11.8	79.8 ± 10.0	69.7 ± 11.6	73.3 ± 13.4	66.6 ± 8.9
Medical history						
Hypertension	4 (66.7)	50 (70.4)	8 (88.9)	16 (72.7)	14 (70.0)	12 (60.0)
Coronary artery disease	4 (66.7)	29 (40.9)	5 (55.6)	7 (31.8)	6 (30.0)	11 (55.0)
Coronary bypass surgery	3 (50.0)	23 (32.4)	2 (22.2)	7 (31.8)	5 (25.0)	9 (45.0)
Diabetes	1 (16.7)	4 (5.6)	0 (0.0)	0 (0.0)	2 (10.0)	2 (10.0)
Hypercholesterolemia	5 (83.3)	55 (77.5)	8 (88.9)	18 (81.8)	13 (65.0)	16 (80.0)
Current smoker	0 (0.0)	8 (11.4)	0 (0.0)	1 (4.6)	3 (15.0)	4 (20.0)
Ex-smoker	3 (50.0)	29 (40.8)	4 (44.4)	10 (45.5)	7 (35.0)	8 (40.0)
Medication						
Aspirin	4 (66.7)	51 (71.8)	7 (77.8)	18 (81.8)	12 (60.0)	14 (70.0)
Clopidogrel	1 (16.7)	9 (12.7)	1 (11.1)	2 (9.1)	4 (20.0)	2 (10.0)
Warfarin	2 (33.3)	4 (5.6)	0 (0.0)	1 (4.5)	3 (15.0)	0 (0.0)
Other anticoagulant	0 (0.0)	2 (2.8)	0 (0.0)	0 (0.0)	1 (5.0)	1 (5.0)
ACEi or ARB	0 (0.0)	39 (54.9)	6 (66.7)	12 (54.5)	10 (50.0)	11 (55.0)
Beta-blocker	2 (33.3)	32 (45.1)	4 (44.4)	13 (59.1)	7 (35.0)	8 (40.0)
Statin	4 (66.7)	50 (70.4)	6 (66.7)	15 (68.2)	14 (70.0)	14 (70.0)
Biochemistry						
Creatinine, μmol/l	102.2 ± 37.2	84.5 ± 23.4	90.3 ± 36.4	80.9 ± 17.8	89.1 ± 19.8	81.3 ± 25.4
eGFR, ml/min/1.73 m ²	48.5 ± 13.0	58 ± 7.5	53.4 ± 11.8	59.8 ± 3.2	57.1 ± 6.8	59.2 ± 8.5
Electrocardiogram						
Sinus rhythm	4 (66.7)	64 (91.4)	9 (100.0)	20 (95.2)	18 (90.0)	17 (85.0)
Paced rhythm	0 (0.0)	4 (5.7)	0 (0.0)	0 (0.0)	1 (5.0)	3 (15.0)
Atrial fibrillation	2 (33.3)	2 (2.9)	0 (0.0)	1 (4.8)	1 (5.0)	0 (0.0)
LV hypertrophy	3 (50.0)	22 (32.4)	4 (44.4)	7 (33.3)	9 (45.0)	2 (11.1)
Strain pattern	3 (50.0)	14 (20.6)	4 (44.4)	2 (9.5)	6 (30.0)	2 (11.1)
Baseline echocardiography						
LV systolic dysfunction	4 (66.7)	11 (15.5)	1 (11.1)	3 (13.6)	4 (20.0)	3 (15.0)
Peak valve velocity, m/s	3.19 (2.84-4.47)	2.73 (2.38-3.07)	2.44 (2.27-2.75)	2.68 (2.28-2.82)	2.93 (2.55-3.40)	2.85 (2.36-3.13)
Mean valve gradient, mm Hg	20.6 (14.0-39.5)	15.0 (11.3-19.3)	13.0 (10.0-15.0)	13.9 (10.2-17.8)	18.5 (13.1-23.8)	17.2 (11.1-20.8)
Effective orifice area, cm ²	0.52 (0.52-0.52)	1.13 (0.94-1.46)	1.33 (0.95-1.60)	1.14 (0.95-1.46)	1.03 (0.92-1.31)	1.20 (0.86-1.49)
Dimensionless velocity index	0.29 (0.20-0.42)	0.39 (0.33-0.44)	0.47 (0.38-0.51)	0.40 (0.36-0.43)	0.35 (0.31-0.40)	0.38 (0.31-0.46)
Prosthetic regurgitation, ≥ moderate	5 (83.3)	2 (2.8)	0 (0.0)	0 (0.0)	0 (0.0)	2 (10.0)
Acceleration time, ms	*	80.3 (75.2-87.4)	87.0 (74.0-93.0)	80.0 (75.0-85.0)	79.0 (75.0-86.0)	85.0 (76.7-94.0)
Acceleration time/LV ejection time	*	0.25 (0.24-0.28)	0.29 (0.25-0.31)	0.25 (0.24-0.27)	0.25 (0.23-0.27)	0.25 (0.22-0.28)
Computed tomography						
Abnormal findings	6 (100.0)	14 (19.7)	0 (0.0)	3 (13.6)	4 (20.0)	7 (30.0)
Spotty calcification	3 (50.0)	5 (7.0)	0 (0.0)	1 (4.5)	1 (5.0)	3 (15.0)
Large calcification	3 (50.0)	0 (0.0)	0 (0.0)	0 (0.0)	0 (0.0)	0 (0.0)
Noncalcific leaflet thickening	2 (33.3)	5 (7.0)	0 (0.0)	1 (4.5)	3 (15.0)	1 (5.0)
Pannus	1 (16.7)	7 (9.9)	0 (0.0)	2 (9.1)	0 (0.0)	5 (25.0)
¹⁸F-fluoride positron emission tomography						
Leaflet uptake	6 (100.0)	24 (33.8)	1 (11.1)	6 (27.2)	8 (40.0)	9 (45.0)
SUV _{MDS} max	4.66 (3.16-7.57)	1.73 (1.42-2.02)	1.89 (1.42-1.99)	1.50 (1.31-1.80)	1.94 (1.39-2.26)	1.73 (1.54-2.34)
SUV _{MDS} mean	3.50 (2.64-5.90)	1.48 (1.27-1.84)	1.59 (1.29-1.82)	1.31 (1.14-1.57)	1.72 (1.21-2.05)	1.44 (1.32-2.04)
TBR _{MDS} max	3.61 (2.37-5.82)	1.31 (1.18-1.70)	1.26 (1.17-1.35)	1.26 (1.12-1.47)	1.52 (1.17-1.82)	1.47 (1.24-2.12)
TBR _{MDS} mean	2.91 (2.10-4.09)	1.12 (1.04-1.51)	1.07 (1.06-1.18)	1.11 (1.00-1.31)	1.38 (1.01-1.62)	1.15 (1.06-1.87)

Values are n, n (%), mean ± SD, or median (interquartile range). *Incomplete data.

ACEi = angiotensin-converting enzyme inhibitor; ARB = angiotensin receptor blockade; CT = computed tomography imaging; eGFR = estimated glomerular filtration rate; LV = left ventricle; MDS = most diseased segment; PET = positron emission tomography; SUV = standardized uptake value; TBR = target-to-background ratio.

FIGURE 2 In Vivo ^{18}F -fluoride PET and CT Imaging of Patients With Bioprosthetic Aortic Valves

Baseline CT (**left**) and ^{18}F -fluoride PET (**right**) images from patients with bioprosthetic aortic valves. En face CT images of aortic bioprosthetic valves showing spotty calcification and large calcification (**top left**), circumferential pannus (**bottom left**), and noncalcific leaflet thickening suggestive of thrombus (**top right**) (all abnormalities identified by **red arrows**). Hybrid en face PET-CT images in the same patients: increased bioprosthetic ^{18}F -fluoride activity (**red/yellow areas**) is observed in each patient colocalizing with the CT abnormalities. ^{18}F -fluoride activity was also commonly observed remote from leaflet changes on CT (**bottom right**). Target-to-background (TBR) values are annotated on the hybrid PET-CT images in **white text**. Abbreviations as in [Figure 1](#).

circumferential pannus ($n = 1$), and distorted leaflet morphology ($n = 1$). Increased ^{18}F -fluoride PET leaflet uptake was observed in the bioprosthetic valves of all these patients, and TBR values were nearly 3 times higher than in patients without known valvular dysfunction (TBR 2.91 [interquartile range (IQR): 1.75 to 4.09] vs. 1.12 [IQR: 1.04 to 1.51]; $p < 0.001$). In the 1 patient with severe patient-prosthesis mismatch, there was no CT abnormality or ^{18}F -fluoride uptake.

PATIENTS WITHOUT KNOWN BIOPROSTHETIC VALVE DYSFUNCTION. In the 71 patients without known bioprosthetic valve dysfunction, surgical aortic valve replacement had been conducted 1 month ($n = 9$), 2 years ($n = 22$), 5 years ($n = 20$), and >10 years ($n = 20$) previously. The function of these different-aged valves was generally within normal limits at baseline (peak velocity 2.76 ± 0.52 m/s, mean gradient 16.4 ± 7.0 mm Hg) ([Table 1](#)).

Contrast-enhanced CT images were not interpretable in 8 patients (11%) due to motion degradation and metallic blooming artefact from the valve struts. Fourteen subjects (19%) had 1 or more leaflet abnormalities on CT: spotty calcification (n = 5), noncalcific leaflet thickening (n = 5), and pannus (n = 7) (Figure 2).

PET scans were interpretable in all patients. Increased ¹⁸F-fluoride uptake was more common than abnormalities on CT and was seen in 24 patients (34%) (TBR 1.55 [IQR: 1.44 to 1.88]) (Figure 2, Online Figure 3). Similar to the ex vivo findings, increased ¹⁸F-fluoride uptake colocalized with areas of spotty calcification, noncalcific leaflet thickening (suggestive of thrombus), and pannus observed on the CT, but was also observed remote from CT abnormalities (Figure 2).

PREDICTION OF BIOPROSTHETIC VALVE DYSFUNCTION.

Sixty-seven of the patients without established valve degeneration at baseline underwent repeat echocardiography at 2 years and demonstrated increased peak velocities compared with baseline (2.87 [IQR: 2.52 to 3.13] m/s vs. 2.73 [IQR: 2.38 to 3.07] m/s; p = 0.002). There was no association between hemodynamic progression and either the type or the age of the bioprosthesis (Online Table 4).

The 14 patients with abnormal CT findings appeared to demonstrate deterioration in bioprosthetic valve function after 2 years, but there was no statistical difference in disease progression compared with patients with a normal CT (change in peak velocity: 0.25 [IQR: -0.06 to 0.57] m/s vs. 0.10 [IQR: -0.04 to 0.31] m/s; p = 0.232).

By contrast, the 24 patients with increased ¹⁸F-fluoride uptake at baseline demonstrated clear evidence of deteriorating bioprosthesis function after 2 years, whereas patients without uptake displayed no change in valve function (change in peak velocity: 0.30 [IQR: 0.13 to 0.61] vs. 0.01 [IQR: -0.05 to 0.16] m/s/year; p < 0.001). Similarly, valves demonstrated progressive hemodynamic deterioration during follow-up on moving across tertiles of ¹⁸F-fluoride uptake (Online Figure 3). Moreover, baseline ¹⁸F-fluoride uptake correlated strongly with all echocardiographic measures of hemodynamic progression regardless of the method used to quantify ¹⁸F-fluoride uptake (Table 2).

On the basis of international guideline criteria (16,17), 10 patients developed new bioprosthetic valve dysfunction during follow-up: 2 with valve regurgitation, 6 with valve stenosis, and 2 with mixed dysfunction. Median time from valve implantation to their assessment in the study was 7.5 (5 to 10) years. Of these patients, 5 had an abnormal baseline CT, whereas all 10 patients had increased ¹⁸F-fluoride

TABLE 2 Correlation Between Bioprosthetic ¹⁸F-fluoride Uptake and Subsequent Deterioration in Valve Function by Echocardiography

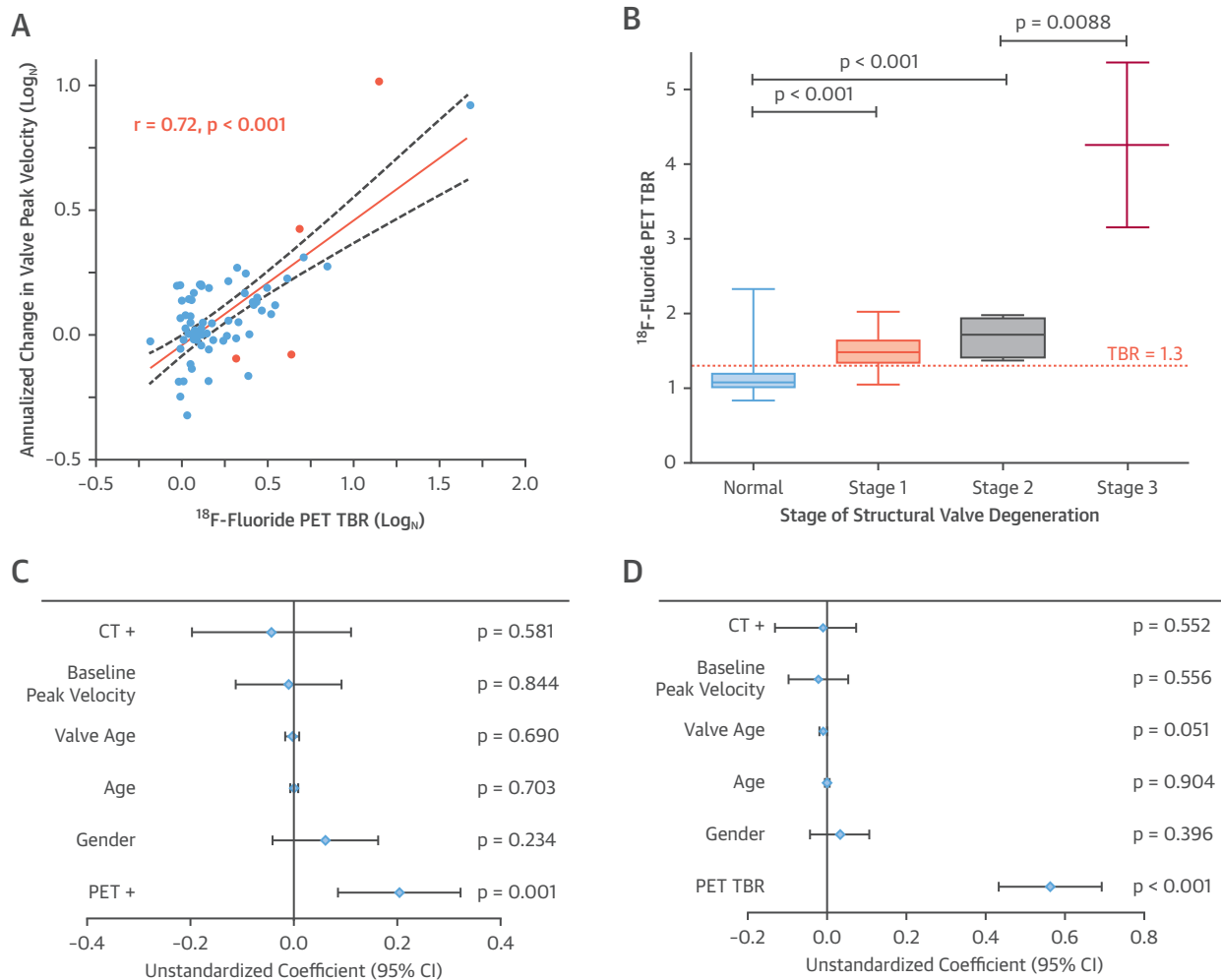
Annualized Change	SUV Mean (Log _N)	SUV Max (Log _N)	TBR Mean (Log _N)	TBR Max (Log _N)
Peak valve velocity, Log _N	r = 0.58 p < 0.001*	r = 0.62 p < 0.001*	r = 0.72 p < 0.001*	r = 0.72 p < 0.001*
Mean valve gradient, Log _N	r = 0.42 p < 0.001*	r = 0.45 p = 0.001*	r = 0.52 p < 0.001*	r = 0.52 p < 0.001*
Effective orifice area, cm ² /yr	r = -0.45 p < 0.001*	r = -0.52 p < 0.001*	r = -0.57 p < 0.001*	r = -0.60 p < 0.001*
Doppler velocity index	r = -0.46 p < 0.001*	r = -0.51 p < 0.001*	r = -0.59 p < 0.001*	r = -0.60 p < 0.001*

In 71 volunteers with bioprosthetic aortic valves without known valve dysfunction, baseline ¹⁸F-fluoride uptake measured by positron emission tomography using any conventional method of quantification (SUV or TBR) was associated with subsequent deterioration in each echocardiographic measure of valve function. Note all values are based upon the most-diseased-segment approach. The TBR mean values were used as the primary comparison and are referred to elsewhere in the paper simply as the TBR abbreviation. *Statistically significant. Abbreviations as in Table 1.

uptake (TBR 1.89 [IQR: 1.46 to 2.59]), and this included the 7 patients with the highest TBR values in the cohort. Two proceeded to urgent valve re-intervention, and another died of valve failure. Using the alternative criteria suggested by the recent international consensus statement (18), 16 patients met the definition of structural valve degeneration, 15 of whom demonstrated increased ¹⁸F-fluoride uptake (TBR 1.54 [IQR: 1.38 to 1.96] vs. 1.08 [IQR: 1.02 to 1.19]; p < 0.001). Seven patients fulfilled criteria for stage 2 or 3 structural valve degeneration, signifying the development of valve dysfunction, and they all exhibited increased baseline ¹⁸F-fluoride uptake (TBR 1.89 [IQR: 1.47 to 3.15]) (Figure 3). Moreover, ¹⁸F-fluoride activity increased in a stepwise fashion across these progressive stages of structural degeneration (TBR no degeneration: 1.08 [IQR: 1.02 to 1.19], stage 1: 1.48 [IQR: 1.34 to 1.64], stage 2: 1.72 [IQR: 1.42 to 1.94], stage 3: 4.23 [IQR: 3.15 to 5.36]; post hoc linear trend p < 0.001) (Figure 3). Two patients developed overt bioprosthetic valve failure during 2-year follow-up, and a further 2 patients developed valve failure on subsequent follow-up, all demonstrating high-intensity ¹⁸F-fluoride uptake (TBR 2.57 [IQR: 1.96 to 3.70]) (19) (Figure 4).

On univariable analysis, the only predictors of deterioration in bioprosthetic valve function (annualized change in bioprosthetic valve peak velocity) were current smoking habit (p = 0.047) and ¹⁸F-fluoride PET uptake, irrespective of whether the latter was considered as a categorical or continuous variable (both p < 0.001) (Online Table 4). On multivariable analysis incorporating age, sex, duration of valve implantation, baseline peak prosthetic valve velocity, and CT findings, ¹⁸F-fluoride uptake emerged as the only predictor of deterioration in bioprosthetic valve function (unstandardized

FIGURE 3 Baseline ^{18}F -fluoride PET Uptake Predicts Subsequent Deterioration in Bioprosthetic Valve Function After 2 Years



(A) A strong correlation was observed between baseline ^{18}F -fluoride uptake in the bioprosthetic valves (TBR) and subsequent progression in bioprosthetic valve peak velocity (log transformation applied; $r = 0.72$; $p < 0.001$). **Orange dots** signify patients who developed new bioprosthetic valve regurgitation during follow-up. **(B)** ^{18}F -fluoride uptake (**dashed orange line** represents threshold for increased ^{18}F -fluoride uptake; TBR 1.3) in patients with different stages of structural valve degeneration after 2-year follow-up (stage 0: no significant change from post-implantation [$n = 54$]; stage 1: morphological abnormalities without significant hemodynamic changes [$n = 9$]; stage 2: new moderate stenosis and/or regurgitation [$n = 5$]; stage 3: new severe stenosis and/or severe regurgitation [$n = 2$]) (18) demonstrating incrementally higher uptake values with increasing severity of structural valve degeneration. **(C and D)** Forest plots of unstandardized coefficients (95% confidence intervals) from a multivariable linear regression analysis predicting change in bioprosthetic valve function (annualized change in peak velocity) during follow-up. When examining all relevant baseline characteristics, ^{18}F -fluoride uptake was the only independent predictor of hemodynamic deterioration in valve function when used both as a dichotomous variable (PET+, TBR >1.3) **(C)** and as a continuous variable (TBR) **(D)**. CI = confidence interval; other abbreviations as in **Figures 1 and 2**.

coefficient 0.79 [95% confidence interval: 0.62 to 0.96]; $p < 0.001$) (Figure 3, Online Table 5).

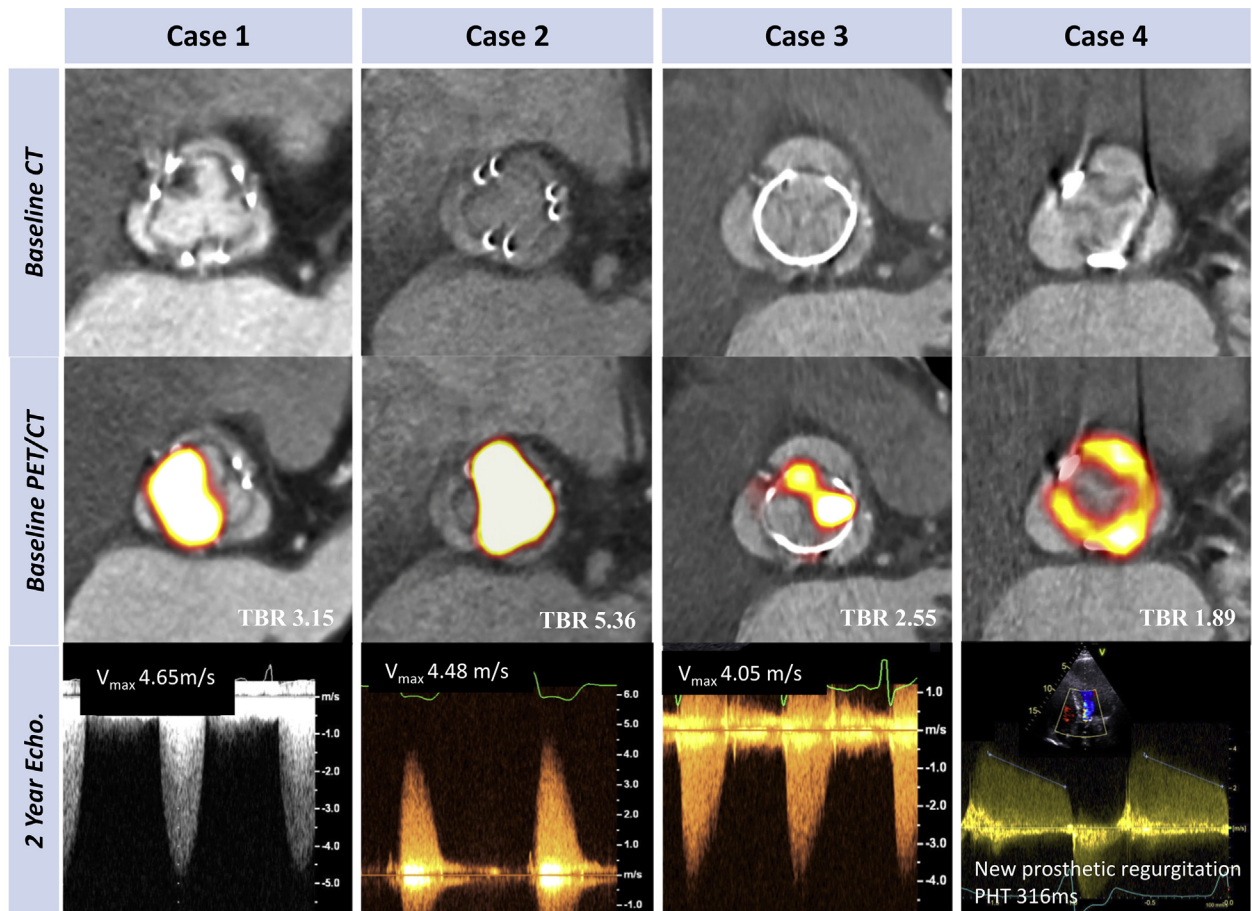
Irrespective of the definition used (16-18), similar results were observed when the development of bioprosthetic valve dysfunction was considered as a categorical variable, with baseline ^{18}F -fluoride uptake emerging each time as an independent predictor on multivariable analyses (international guideline criteria [16,17]: unstandardized coefficient 7.57

[standard error 2.66]; $p = 0.004$); expert consensus statement [18]: unstandardized coefficient 6.81 [standard error 2.92]; $p = 0.02$) (Online Table 6).

DISCUSSION

In this multimodality prospective imaging study, we have identified ^{18}F -fluoride PET-CT as the first noninvasive technique capable of detecting early

FIGURE 4 Case Illustrations: Baseline ¹⁸F-fluoride PET and CT Predict Imminent Failure of Bioprosthetic Function

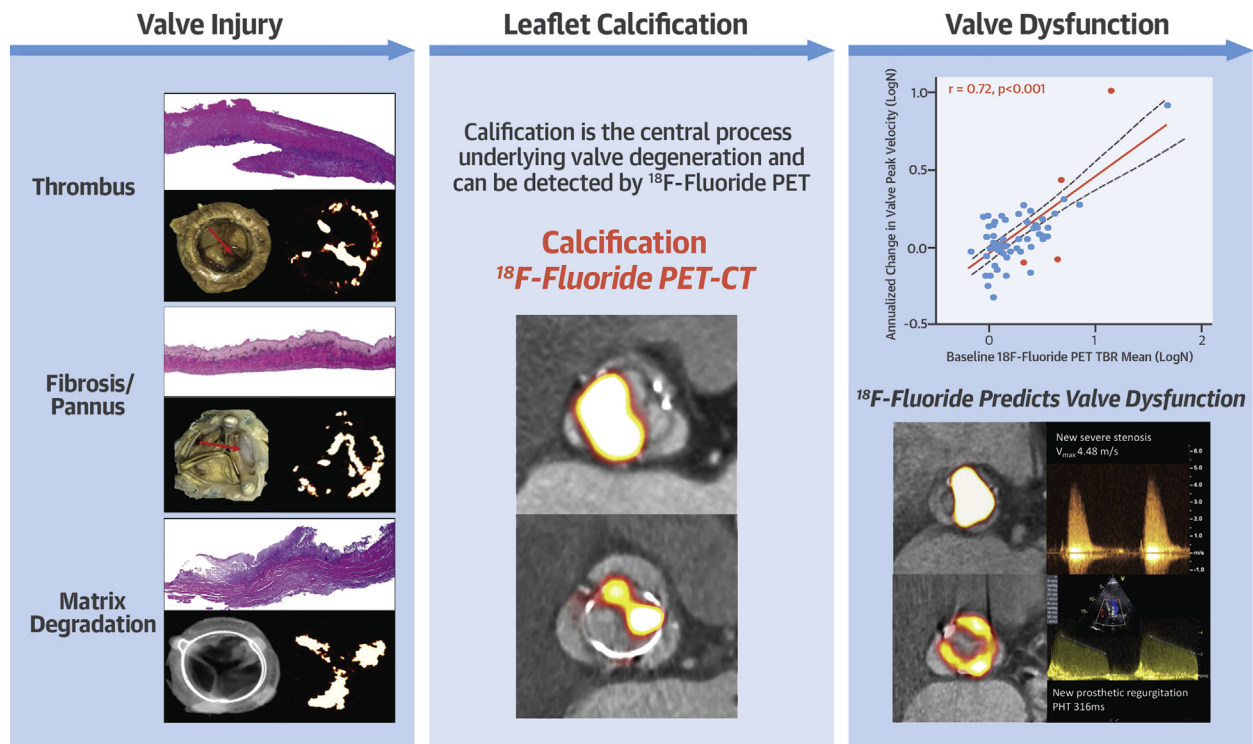


Cases 1 to 4 illustrate the utility of ¹⁸F-fluoride PET and CT in the prediction of deteriorating valve performance. None of the patients had known bioprosthetic degeneration at baseline. En face contrast-enhanced CT images (**top row**) demonstrate noncalcific leaflet thickening in case 1, but no clear structural CT changes in the remaining cases. Hybrid ¹⁸F-fluoride PET-CT images (**middle row**) demonstrate high-intensity ¹⁸F-fluoride activity in all the valves (TBR values in **white**). Doppler echocardiographic assessments of bioprosthetic valve function after follow-up (**bottom row**). In each case, new valve dysfunction has developed with progression to severe obstruction in cases 1, 2, and 3 and new moderate/severe eccentric regurgitation in case 4 (pressure half time 316 ms with holodiastolic flow reversal in aorta). Patient #1 died from valve-related heart failure, Patient #2 required redo surgical valve replacement, Patient #3 remains under close surveillance, and Patient #4 is undergoing work-up for redo surgery.

bioprosthetic valve degeneration and of predicting future valve dysfunction (**Central Illustration**). We provide extensive validation of the technique against state-of-the-art ex vivo imaging and histology. This consistently demonstrated increased ¹⁸F-fluoride uptake in each of the failed bioprosthetic aortic valves examined, with PET activity colocalizing to areas of calcification, pannus, thrombus, and disrupted tissue architecture on histology. When applied to patients in the clinical setting, ¹⁸F-fluoride PET identified early valve degeneration beyond the resolution of conventional assessments and predicted the development of new valvular dysfunction and overt

valve failure within the 2-year follow-up period. Indeed, ¹⁸F-fluoride uptake was an independent predictor of deteriorating bioprosthetic valve performance, outperforming all other variables, including valve type and age, and echocardiographic and CT findings. ¹⁸F-fluoride PET-CT, therefore, provides a readily applicable measure of valve degeneration with the potential to transform how we monitor and treat the expanding population of patients living with bioprosthetic valves.

Our study has several major strengths. This is a comprehensive multimodal imaging study using ultrasound, CT, and PET in patients with

CENTRAL ILLUSTRATION Pathogenesis of Bioprosthetic Valve Degeneration and Utility of ^{18}F -Fluoride Positron Emission Tomography

Cartlidge, T.R.G. *et al.* *J Am Coll Cardiol.* 2019;73(10):1107-19.

(Left column) Potential mechanisms of initial valve injury include leaflet thrombosis, fibrosis, and matrix degradation with expansion of the central proteoglycan layer, fluid insudation, and disruption of normal collagen architecture. **(Middle column)** Each appears to lead to bioprosthetic valve calcification as the final common pathway for valve degeneration that can be detected with ^{18}F -fluoride PET imaging. **(Right column)** Baseline ^{18}F -fluoride uptake correlates strongly with subsequent deterioration in valve function during follow-up (annualized change in peak transvalvular velocity: $r = 0.72$; $p < 0.001$) **(top)**. Two examples demonstrate high-intensity ^{18}F -fluoride leaflet uptake at baseline in valves without previous evidence of degeneration. After follow-up, both bioprosthetic valves developed clear evidence of dysfunction: one with severe stenosis, and the other, regurgitation. PET = positron emission tomography.

bioprosthetic aortic valves of varying implant ages. Uniquely, we have been able to correlate imaging findings with state-of-the-art *ex vivo* imaging and histological characterization of explanted valves, enabling us to validate our imaging technique and provide novel insights into the pathogenesis of bioprosthetic valve degeneration. Moreover, our systematic prospective study design has allowed us to confirm the utility of baseline ^{18}F -fluoride PET in identifying patients at risk of developing future bioprosthetic dysfunction and overt valve failure.

A CLINICAL CHALLENGE. Although bioprosthetic valves offer important advantages over mechanical valves, they have only limited durability (25,26). Indeed, bioprosthetic valve degeneration has become a major clinical issue with the growing rate of

bioprosthetic valve implantation and improved long-term patient survival. Although international guidelines recommend serial echocardiography for the detection of bioprosthetic degeneration (16,17), visualization of the valve is often poor due to acoustic artefacts from the prosthesis, limiting its sensitivity. This means that valve degeneration is frequently well advanced before clinically overt valve dysfunction is apparent. Moreover, valve obstruction often evolves rapidly, whereas the catastrophic development of valvular regurgitation due to leaflet tears is frequently unheralded and unpredictable. Novel techniques capable of detecting the earlier stages of valve degeneration and allowing personalized and better planned management strategies for patients with bioprosthetic valves are therefore highly desirable.

INSIGHTS INTO THE MECHANISM OF BIOPROSTHETIC VALVE DEGENERATION. We and others have used ^{18}F -fluoride PET to assess cardiovascular calcification activity and tissue degeneration in a range of conditions including coronary heart disease, stroke, abdominal aortic aneurysms, and aortic stenosis (9-12). We now extend these observations to bioprosthetic valves and confirm that ^{18}F -fluoride localizes to regions of developing leaflet calcification on histology and high-resolution micro-PET-CT imaging. Calcification is believed to be the final common response to bioprosthetic valve injury and a major driver toward valve dysfunction, causing both progressive cusp stiffness and obstruction as well as leaflet fragility and tears. In this study, all bioprosthetic valves with established degeneration and valve failure demonstrated increased ^{18}F -fluoride uptake. Moreover, in both our ex vivo and in vivo studies, we observed a close spatial interaction of calcification with both leaflet thrombosis and pannus, suggesting these may be potential upstream triggers. By contrast, a minority of bioprosthetic valves appear to degenerate without any histological evidence of calcification. In these cases, the remarkable histological features were gross leaflet thickening, fluid insudation, and disruption of normal collagen architecture. Interestingly, these valves also exhibited high levels of ^{18}F -fluoride uptake. We hypothesize that up-regulation of matrix metalloproteinases may be implicated in the degradation of bioprosthetic leaflet tissue and that these proteins have the potential to bind ^{18}F -fluoride (27,28). Further investigation of the mechanism of uptake is required.

Recent reports have described focal noncalcific leaflet thickening as a marker of thrombus formation (20,29). Although these areas can cause acute valve obstruction, more commonly, they do not result in any immediate hemodynamic disturbance, leading some to question their clinical relevance. In our study, we also observed low-attenuation noncalcific leaflet thickening on CT, suggestive of non-obstructive thrombus, that was associated with both increased ^{18}F -fluoride activity and delayed deterioration in valve performance over the following 2 years. Similar findings were observed in explanted valves, where areas of thrombus colocalized with calcium on Von Kossa staining and exhibited increased ^{18}F -fluoride PET activity. This raises the hypothesis that bioprosthetic valve thrombosis may act as one potential trigger to valve degeneration that might be prevented with prompt detection and anticoagulation. Interestingly, recent observational data have suggested that bioprosthetic durability

may be enhanced by concomitant anticoagulation therapy (30).

CLINICAL IMPLICATIONS. Our findings have several major implications for clinical practice. First, in addition to micro- and macrocalcification, ^{18}F -fluoride PET-CT can identify a range of degenerative processes including fibrosis, thrombosis, and leaflet degradation with disrupted collagen architecture and fluid insudation. This has provided important insights into the pathogenesis of bioprosthetic valve failure and highlights potential targets for novel therapies aimed at improving valve durability. Second, ^{18}F -fluoride PET can detect and quantify the early stages of valvular degeneration and identify patients otherwise thought to have normal valves but who are in fact at high risk of subsequent valve failure. Given the high mortality associated with emergency repeat valve replacement (8), these patients are likely to benefit from both close tailored surveillance and early elective intervention before the onset of abrupt valve failure. Conversely, patients without PET uptake, who here demonstrated very stable valve function during follow-up, could undergo less intensive surveillance. Our data suggest that 5 years post-implantation may be an appropriate stage at which to offer a PET-CT scan and guide follow-up, with further studies needed. Third, ^{18}F -fluoride PET-CT appears of value in determining the presence of valvular degeneration in cases where the diagnosis and clinical management is uncertain, for example in patients with suspected patient-prosthesis mismatch. Finally, ^{18}F -fluoride PET-CT provides a readily applicable measure of valve durability that may prove useful in assessing novel prosthetic designs such as transcatheter valves before these are extended into younger and healthier patient populations.

STUDY LIMITATIONS. It was initially envisaged that serial CT calcium scoring of bioprosthetic aortic valves would also provide a marker of valve degeneration. However, in our hands, we observed major artefact related to motion and the valve frame that precluded accurate analysis of CT calcium scores. Leaflet pathology was instead more successfully identified by contrast-enhanced CT, where superior anatomic detail allowed differentiation between pannus ingrowth, thrombosis, or calcification, although a minority of scans still could not be accurately adjudicated. Alongside the robust information provided by ^{18}F -fluoride PET this is an important advantage of the hybrid PET/CT technique.

Although our study population is relatively large compared with other cardiovascular PET studies,

external validation in a larger study population with longer follow-up would be welcome. Future studies may wish to investigate ^{18}F -fluoride activity in novel bioprostheses, in particular aortic and mitral transcatheter valves, as well as assessing whether the bioprosthetic ^{18}F -fluoride signal is modifiable with adjuvant therapies, such as anticoagulation in patients with associated thrombus or drugs that modify calcium metabolism (e.g., bisphosphonates, denosumab).

CONCLUSIONS

^{18}F -fluoride PET-CT detects early bioprosthetic valve degeneration, providing powerful prediction of subsequent deterioration in valve performance and highlighting patients at imminent risk of valve failure. This novel imaging approach has the potential to transform our understanding of bioprosthetic valve failure and the way in which we monitor and treat patients with bioprosthetic valves.

ADDRESS FOR CORRESPONDENCE: Dr. Marc R. Dweck, Centre for Cardiovascular Science, University of Edinburgh, 49 Little France Crescent, Edinburgh EH16 4SB, United Kingdom. E-mail: marc.dweck@ed.ac.uk. Twitter: [@marcdweck](https://twitter.com/marcdweck).

PERSPECTIVES

COMPETENCY IN PATIENT CARE AND

PROCEDURAL SKILLS: ^{18}F -fluoride PET-CT imaging can detect early bioprosthetic valve degeneration and predict subsequent valve dysfunction, identifying patients at high risk of earlier valve failure.

TRANSLATIONAL OUTLOOK: Pragmatic studies are needed to define the role of ^{18}F -fluoride PET-CT imaging in protocols for the surveillance of patients with bioprosthetic valves.

REFERENCES

1. Lung B, Vahanian A. Epidemiology of valvular heart disease in the adult. *Nat Rev Cardiol* 2011;8:162-72.
2. Nkomo VT, Gardin JM, Skelton TN, Gottdiener JS, Scott CG, Enriquez-Sarano M. Burden of valvular heart diseases: a population-based study. *Lancet* 2006;368:1005-11.
3. Brown JM, O'Brien SM, Wu C, Sikora JA, Griffith BP, Gammie JS. Isolated aortic valve replacement in North America comprising 108,687 patients in 10 years: changes in risks, valve types, and outcomes in the Society of Thoracic Surgeons National Database. *J Thorac Cardiovasc Surg* 2009;137:82-90.
4. Brennan JM, Thomas L, Cohen D, et al. Transcatheter versus surgical aortic valve replacement: propensity-matched comparison. *J Am Coll Cardiol* 2017;70:439-50.
5. Pibarot P, Dumesnil JG. Prosthetic heart valves: selection of the optimal prosthesis and long-term management. *Circulation* 2009;119:1034-48.
6. Singhal P, Luk A, Butany J. Bioprosthetic heart valves: impact of implantation on biomaterials. *ISRN Biomaterials* 2013;2013:728791.
7. Rodriguez-Gabella T, Pierre Voisine P, Puri R, Pibarot P, Rodés-Cabau J. Aortic bioprosthetic valve durability: incidence, mechanisms, predictors, and management of surgical and transcatheter valve degeneration. *J Am Coll Cardiol* 2017;70:1013-28.
8. Vogt PR, Brunner-LaRocca HP, Sidler P, et al. Reoperative surgery for degenerated aortic bioprostheses: predictors for emergency surgery and reoperative mortality. *Eur J Cardio-Thorac* 2000;17:134-9.
9. Dweck MR, Jones C, Joshi NV, et al. Assessment of valvular calcification and inflammation by positron emission tomography in patients with aortic stenosis. *Circulation* 2012;125:76-86.
10. Forsythe RO, Dweck MR, McBride OMB, et al. ^{18}F -Sodium fluoride uptake in abdominal aortic aneurysms: the SoFIA3 study. *J Am Coll Cardiol* 2018;71:513-23.
11. Joshi NV, Vesey AT, Williams MC, et al. ^{18}F -Fluoride positron emission tomography for identification of ruptured and high-risk coronary atherosclerotic plaques: a prospective clinical trial. *Lancet* 2014;383:705-13.
12. Vesey AT, Jenkins WSA, Irkle A, et al. ^{18}F -Fluoride and ^{18}F -fluorodeoxyglucose positron emission tomography after transient ischemic attack or minor ischemic stroke: case-control study. *Circ Cardiovasc Imag* 2017;10:e004976.
13. Irkle A, Vesey AT, Lewis DY, et al. Identifying active vascular microcalcification by (^{18}F) -sodium fluoride positron emission tomography. *Nat Commun* 2015;6:7495.
14. Dweck MR, Jenkins WS, Vesey AT, et al. ^{18}F -sodium fluoride uptake is a marker of active calcification and disease progression in patients with aortic stenosis. *Circ Cardiovasc Imag* 2014;7:371-8.
15. Jenkins WS, Vesey AT, Shah AS, et al. Valvular (^{18}F) -Fluoride and (^{18}F) -fluorodeoxyglucose uptake predict disease progression and clinical outcome in patients with aortic stenosis. *J Am Coll Cardiol* 2014;66:1200-1.
16. Lancellotti P, Pibarot P, Chambers J, et al. Recommendations for the imaging assessment of prosthetic heart valves: a report from the European Association of Cardiovascular Imaging. *Eur Heart J-Card Imag* 2016;17:589-90.
17. Zoghbi WA, Chambers JB, Dumesnil JG, et al. Recommendations for evaluation of prosthetic valves with echocardiography and Doppler ultrasound. *J Am Soc Echocardiogr* 2009;22:975-1014.
18. Dvir D, Bourguignon T, Otto CM, et al. Standardized definition of structural valve degeneration for surgical and transcatheter bioprosthetic valves. *Circulation* 2018;137:388-99.
19. Capodanno D, Petronio AS, Prendergast B, et al. Standardized definitions of structural deterioration and valve failure in assessing long-term durability of transcatheter and surgical aortic bioprosthetic valves: a consensus statement from the European Association of Percutaneous Cardiovascular Interventions. *Eur Heart J* 2017;38:3382-90.
20. Makkar RR, Fontana G, Jilalawi H, et al. Possible subclinical leaflet thrombosis in bioprosthetic aortic valves. *N Engl J Med* 2015;373:2015-24.
21. Pache G, Schoechlin S, Blanke P, et al. Early hypo-attenuated leaflet thickening in balloon-expandable transcatheter aortic heart valves. *Eur Heart J* 2016;37:2263-71.
22. Fujita B, Kutting M, Seiffert M, et al. Calcium distribution patterns of the aortic valve as a risk factor for the need of permanent pacemaker implantation after transcatheter aortic valve implantation. *Eur Heart J Cardiovasc Imaging* 2016;17:1385-93.
23. Motoyama S, Kondo T, Sarai M, et al. Multislice computed tomographic characteristics of coronary lesions in acute coronary syndromes. *J Am Coll Cardiol* 2007;50:319-26.

- 24.** Pawade TA, Cartlidge TR, Jenkins WS, et al. Optimization and reproducibility of aortic valve 18F-fluoride positron emission tomography in patients with aortic stenosis. *Circ Cardiovasc Imag* 2016;9:e005131.
- 25.** Foroutan F, Guyatt GH, O'Brien K, et al. Prognosis after surgical replacement with a bioprosthetic aortic valve in patients with severe symptomatic aortic stenosis: systematic review of observational studies. *BMJ* 2016;354:i5065.
- 26.** Bloomfield P, Wheatley DJ, Prescott RJ, Miller HC. Twelve year comparison of a Bjork-Shiley mechanical heart valve with porcine bioprostheses. *N Engl J Med* 1991;324:573-9.
- 27.** Simionescu A, Simionescu D, Deac R. Biochemical pathways of tissue degeneration in bioprosthetic cardiac valves. The role of matrix metalloproteinases. *ASAIO J* 1996;42:561-7.
- 28.** Kato MT, Bolanho A, Zarella BL, Salo T, Tjäderhane L, Buzalaf MAR. Sodium fluoride inhibits MMP-2 and MMP-9. *J Den Res* 2014;93:74-7.
- 29.** Chakravarty T, Sondergaard L, Friedman J, et al. Subclinical leaflet thrombosis in surgical and transcatheter bioprosthetic aortic valves: an observational study. *Lancet* 2017;389:2383-92.
- 30.** Del Trigo M, Muñoz-García AJ, Latib A, et al. Impact of anticoagulation therapy on valve hemodynamic deterioration following transcatheter aortic valve replacement. *Heart* 2018;104:814-20.

KEY WORDS aortic valve replacement, bioprosthetic valve degeneration, calcification, histology, positron emission tomography

APPENDIX For expanded Methods and Results sections as well as supplemental figures and tables, please see the online version of this paper.