

Original Article



Young Patients with Hormone Receptor-Positive Breast Cancer Have a Higher Long-Term Risk of Breast Cancer Specific Death

Jianfei Fu^{1,*}, Chenhan Zhong^{2,3,*}, Lunpo Wu^{4,5}, Dan Li^{2,3}, Tiantian Xu,⁶ Ting Jiang⁷, Jiao Yang⁸, Jinlin Du ⁹

OPEN ACCESS

Received: Jun 23, 2018

Accepted: Mar 4, 2019

Correspondence to

Jinlin Du

Department of Colorectal Surgery, Jinhua Central Hospital, 351 Mingyue Road, Jinhua 321000, Zhejiang Province, China.
E-mail: dj19090@163.com

*These authors have contributed equally to the work.

© 2019 Korean Breast Cancer Society

This is an Open Access article distributed under the terms of the Creative Commons Attribution Non-Commercial License (<https://creativecommons.org/licenses/by-nc/4.0/>) which permits unrestricted non-commercial use, distribution, and reproduction in any medium, provided the original work is properly cited.

ORCID iDs

Jinlin Du 

<https://orcid.org/0000-0001-6117-3835>

Funding

The study was partially supported by the Medical Science & Technology Plan Project of Zhejiang Province (grant number: 2013KYA212). Moreover, the work was sponsored by the Zheng Shu Medical Elite Scholarship Fund.

Conflict of Interest

The authors declare that they have no competing interests. The study was partially supported by the Medical Science & Technology Plan Project of Zhejiang Province (grant numbers: 2013KYA212). Moreover, the work was sponsored by the Zheng Shu Medical Elite Scholarship Fund.

¹Department of Oncology, Jinhua Central Hospital, Jinhua, China

²Department of Medical Oncology, The Second Affiliated Hospital of Zhejiang University School of Medicine, Hangzhou, China

³Cancer Institute (Key Laboratory of Cancer Prevention and Intervention, Chinese National Ministry of Education; Key Laboratory of Molecular Biology in Medical Sciences, Zhejiang Province, China), The Second Affiliated Hospital of Zhejiang University School of Medicine, Hangzhou, China

⁴Department of Gastroenterology, The Second Affiliated Hospital of Zhejiang University School of Medicine, Hangzhou, China

⁵Institution of Gastroenterology, Zhejiang University, Hangzhou, China

⁶Institute of Translational Medicine, School of Medicine, Zhejiang University, Hangzhou, China

⁷Department of Nuclear Medicine, Jinhua central hospital, Jinhua, China

⁸Department of Medical Oncology, The First Affiliated Hospital of Xi'an Jiaotong University, Xi'an, China

⁹Department of Colorectal Surgery, Jinhua central hospital, Jinhua, China

ABSTRACT

Purpose: Although it is widely accepted that hormone receptor (HR) status is associated with later post-diagnostic periods, a debate exists as to whether the association is independent of age. The aim of our study was to confirm the impact of HR status on later period breast cancer-specific death (LP-BCSD) and later period non-breast cancer-specific death (LP-non-BCSD) in different age subgroups.

Methods: Surveillance, Epidemiology, and End Results databases were utilized to identify 181,108 breast cancer patients with > 5 years survival. The cumulative incidence of LP-BCSD and LP-non-BCSD was calculated using the Gray method. The subdistribution hazard ratio (SHR) of variables was estimated via the Fine and Gray proportional hazard regression model. Subgroup analyses for LP-BCSD and LP-non-BCSD were performed according to the HR status.

Results: The risk of LP-BCSD was exceeded by that of LP-non-BCSD at > 5 years since the diagnosis, particularly in old women. The competing risk regression model indicated that hormone receptor-positive (HR+) was an independent factor for more LP-BCSD (hazard ratio, 1.54; 95% confidence interval, 1.44–1.54; $p < 0.001$). However, stratified analysis indicated that HR+ was only associated with more LP-BCSD in the young women subgroup. Although HR+ was associated with more LP-non-BCSD, the predictive value of HR+ for LP-non-BCSD was eliminated after adjusting for age.

Conclusions: HR+ was related to LP-BCSD in the premenopausal population. LP-BCSD should be an optimal endpoint in future trials designed to evaluate the role of extended adjuvant endocrine therapy.

Keywords: Breast neoplasms; Drug therapy; Estrogen receptors; Prognosis

Author Contributions

Conceptualization: Fu J; Data curation: Wu L, Jiang T; Formal analysis: Li D, Yang J; Methodology: Xu T; Writing - original draft: Zhong C; Writing - review & editing: Du J.

INTRODUCTION

In previous decades, the prognosis of breast cancer has remarkably improved, particularly for the hormone receptor-positive (HR+) population, which is largely attributed to the benefit of endocrine therapy (ET) [1-4]. However, the risk of death in breast cancer persists at least 15 years after diagnosis [5]. As the HR+ has been considered an unfavorable prognostic factor for late period survival [6], an extended adjuvant ET was deemed imperative for the HR+ population. However, until recently, there has been limited knowledge of the real impact of HR status on later period breast cancer-specific death (LP-BCSD) and later period non-breast cancer-specific death (LP-non-BCSD) in patients of different age groups. Due to the long-term survival period and the non-ignorable competing risks of death, the effect of LP-non-BCSD on survival should be highlighted as it might exceed the rate of LP-BCSD. Survival analyses based on absolute risk of death, which ignore LP-non-BCSD, may fail to correctly interpret the outcomes.

Therefore, our study analyzed women with resectable breast cancer who have survived ≥ 5 years, identified from the Surveillance, Epidemiology, and End Results (SEER) database, and explored the real effect of HR status on LP-BCSD and LP-non-BCSD.

METHODS**Inclusion and exclusion criteria**

The invasive breast cancer cases in SEER's 18-registry database were analyzed. SEER.Stat version 8.3.2 (<http://seer.cancer.gov/seerstat>) was utilized to identify patients who were diagnosed with breast cancer from January 1990 to December 2007. The patients who were diagnosed after 2007 were excluded to ensure an adequate duration of follow-up. The cutoff of 1990 was selected because SEER has collected estrogen receptor (ER) and progesterone receptor (PR) data since 1990. The year and age at diagnosis, gender, ethnicity, marital status, histological type, differentiated grade, location of the tumor, T-classification, N-classification, stage TNM, administration of radiotherapy, ER, PR, survival months, and cause of death were retrieved from the SEER database. The specific inclusion criteria were as follows: 1) the site record ICD-O-3 was limited to breast (C500–506; C508–509); 2) the histological type ICD-O-3 was limited to infiltrative ductal cancer (IDC) (8500/3, 8521/3, 8523/3), infiltrative lobular cancer (ILC) (8520/3, 8524/3) or a mixture of both (IDC+ILC) (8522/3); 3) the survival time of the patients exceeded 60 months; and 4) the age at diagnosis was 20–80 years. The exclusion criteria were as follows: 1) patients who lacked documentation of ethnicity, marital status, differentiated grade, location of tumor, ER, PR, T-classification, N-classification, and administration of therapy; 2) patients with tumor of M1-classification or stage IV; 3) patients with multiple primary tumors; 4) the cause of death was unknown; or 5) bilateral primary breast cancer (for the detailed inclusion and exclusion criteria, refer to **Supplementary Fig. 1**).

Variable declaration

The ethnicity was classified into white, black, and others. The patients were divided into 3 groups according to age: 20–40 years, 41–60 years, 61–70 years, and 71–80 years. The marital status was classified as married, single, and divorced. The HR status was stratified into negative (ER- and PR-) and positive (ER+ and/or PR-). The tumor locations were divided as central portion, outer upper quadrant, outer lower quadrant, inner upper quadrant, inner lower quadrant, and overlapping lesion. The histological types were classified as IDC, ILC,

and mixture. All cases were regrouped according to the 8th edition of the American Joint Committee on Cancer (AJCC) TNM staging system.

Statistical analysis

The LP-BCSD was set as the primary endpoint, and the LP-non-BCSD was set as the secondary endpoint. The cumulative incidence of LP-BCSD or LP-non-BCSD was estimated and compared via Gray's test [7]. When the cumulative incidence of LP-BCSD was estimated, the LP-BCSD was considered as the failure event and LP-non-BCSD as the competing event, and vice versa. Moreover, the subdistribution hazard ratio (SHR) of the variables for cause-specific death was estimated using the Fine and Gray proportional hazard model [8]. The statistical analysis was developed by *rms* and *cmprsk* package in R software (<http://www.r-project.org/>). A p -value < 0.05 was considered statistically significant.

RESULTS

We identified 181,108 eligible patients with breast cancer with > 5 years survival after the initial diagnosis. The final date of the follow-up was November 2013, and the median follow-up duration was 59 months (range, 0 to 227 months) (calculated from 60 months after diagnosis). In total, 13,067 (7.22%) and 16,579 patients (9.15%) died from breast cancer and other causes, respectively. The median age was 56 years (20–80 years). The 5- and 10-year LP-BCSD rates were 6.43% and 10.89%, respectively, and the 5- and 10-year LP-non-BCSD rates were 6.65% and 15.35%, respectively. The LP-non-BCSD exceeded the LP-BCSD at 115 months among the HR+ breast cancer population. The LP-non-BCSD exceeded the LP-BCSD at 144 months among the HR- breast cancer population and played a key role in all causes of death.

Patient demographics and tumor characteristics according to HR status

The age 40–60 years old was the most frequent age group in patients who have survived > 5 years with a slightly higher rate in the HR- group (57.38%) than in the HR+ group (51.84%). Compared to the HR- group, significantly more patients in the HR+ group were aged 70–80 years (17.39% vs. 10.58%, $p < 0.001$), white ethnicity (84.91% vs. 77.48%, $p < 0.001$), ILC tumors (7.46% vs. 1.17%, $p < 0.001$), and T1 tumors (70.25% vs. 54.62%, $p < 0.001$).

Regarding the differentiated grade, only 2.86% of well-differentiated tumors were identified in the HR- group, whereas 23.66% patients were diagnosed with well-differentiated tumors in the HR+ group. The percentages of patients with poorly differentiated tumors were 76.83% and 25.85% in the HR- group and HR+ group, respectively, with significant differences ($p < 0.001$) (Table 1).

Univariate and multivariate analyses based on competing risk regression model

The univariate analysis showed that HR+ was significantly associated with more LP-BCSD (SHR, 1.18; 95% confidence interval [CI], 1.13–1.24; $p < 0.001$) (Figure 1). Further, multivariate analysis demonstrated that HR+ was an independent prognostic factor for more LP-BCSD (SHR, 1.54; 95% CI, 1.44–1.64; $p < 0.001$). The following variables were also independently associated with more LP-BCSD: young age, black ethnicity, single marital status, poorly differentiated grade, larger tumor, and lymph node involvement (Table 2). The univariate and multivariate analyses showed that old age was the strongest predictive factor for more LP-non-BCSD and that HR+ was associated with more LP-non-BCSD. Furthermore, the multivariate analysis showed that HR+ was not associated with the occurrence of LP-non-BCSD.

Hormone Receptor Status and Late Period Breast Cancer Specific Death

Table 1. Characteristics of 181,108 patients with breast cancer

Factors	Total (n = 181,108)	HR- (n = 32,684), No. (%)	HR+ (n = 148,424), No. (%)	p-value*
Age (yr)				< 0.001
20-40	15,085	4,498 (13.76)	10,587 (7.13)	
40-60	95,690	18,753 (57.38)	76,937 (51.84)	
60-70	41,066	5,975 (18.28)	35,091 (23.64)	
70-80	29,267	3,458 (10.58)	25,809 (17.39)	
Race				< 0.001
White	151,342	25,322 (77.48)	126,020 (84.91)	
Black	14,122	4,605 (14.09)	9,517 (6.41)	
Others	15,644	2,757 (8.44)	12,887 (8.68)	
Marital status				< 0.001
Married	116,859	21,316 (65.22)	95,543 (64.37)	
Single	22,135	4,246 (12.99)	17,889 (12.05)	
Divorce	42,114	7,122 (21.79)	34,992 (23.58)	
Location				< 0.001
Central portion	11,151	1,593 (4.87)	9,558 (6.44)	
Upper-inner quadrant	23,335	4,263 (13.04)	19,072 (12.85)	
Lower-inner quadrant	11,598	2,124 (6.50)	9,474 (6.38)	
Upper-outer quadrant	77,828	14,591 (44.64)	63,237 (42.61)	
Lower-outer quadrant	14,417	2,484 (7.60)	11,933 (8.04)	
Overlapping lesion	42,779	7,629 (23.34)	35,150 (23.68)	
Histology				< 0.001
IDC	154,829	31,585 (96.64)	123,244 (83.04)	
ILC	11,453	383 (1.17)	11,070 (7.46)	
IDC+ILC	14,826	716 (2.19)	14,110 (9.51)	
Differentiated grade				< 0.001
Well	36,044	934 (2.86)	35,110 (23.66)	
Moderate	81,582	6,639 (20.31)	74,943 (50.49)	
Poorly	63,482	25,111 (76.83)	38,371 (25.85)	
T-classification [†]				< 0.001
T1	122,118	17,851 (54.62)	104,267 (70.25)	
T2	50,804	12,726 (38.94)	38,078 (25.65)	
T3	6,173	1,561 (4.78)	4,612 (3.11)	
T4	2,013	546 (1.67)	1,467 (0.99)	
N-classification [†]				< 0.001
N0	122,802	22,137 (67.73)	100,665 (67.82)	
N1	42,445	7,414 (22.68)	35,031 (23.6)	
N2	11,244	2,174 (6.65)	9,070 (6.11)	
N3	4,617	959 (2.93)	3,658 (2.46)	
Stage [†]				< 0.001
I	94,737	13,896 (42.52)	80,841 (54.47)	
II	67,134	14,771 (45.19)	52,363 (35.28)	
III	19,237	4,017 (12.29)	15,220 (10.25)	
ER				-
Negative	36,111	32,684 (100.00)	3,427 (2.31)	
Positive	144,997	0	144,997 (97.69)	
PR				-
Negative	54,332	32,684 (100.00)	21,648 (14.59)	
Positive	126,776	0	126,776 (85.41)	
Radiotherapy				< 0.001
Without	75,490	15,000 (45.89)	60,490 (40.75)	
With	105,618	17,684 (54.11)	87,934 (59.25)	

HR = hormone receptor; IDC = infiltrating duct carcinoma; ILC = infiltrating lobular carcinoma; ER = estrogen receptor; PR = prognosis receptor; AJCC = American Joint Committee on Cancer.

*p-values obtained from the χ^2 test. All statistical tests were 2-sided, [†]Stage TNM, T, N-classification according to 8th edition of AJCC staging.

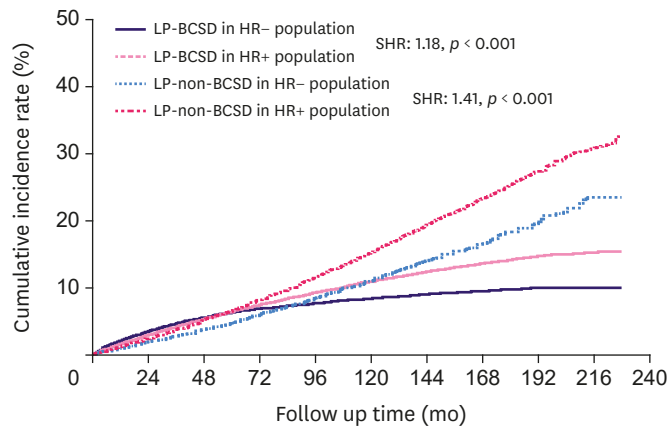


Figure 1. Cumulative incidence of LP-BCSD and LP-non-BCSD for HR+ and HR- breast cancer. HR+ breast cancer had more LP-BCSD in the whole cohort compared to HR- breast cancer (SHR, 1.18; 95% CI, 1.13–1.24; $p < 0.001$). Moreover, HR+ was associated with more LP-non-BCSD (SHR, 1.41; 95% CI, 1.35–1.47; $p < 0.001$). The risk of LP-BCSD was exceeded by that of LP-non-BCSD in the HR+ and HR- subgroups. The curves were plotted using the Gray method.

LP-BCSD = later period breast cancer-specific death; LP-non-BCSD = later period non-breast cancer-specific death; HR = hormone receptor; SHR = subdistribution hazard ratio; CI = confidence index.

Table 2. LP-BCSD and non-LP-BCSD in univariate and multivariate analysis

Risk Factors	LP-BCSD [†]				LP-non-BCSD [†]			
	Univariate analyses		Multivariate analyses		Univariate analyses		Multivariate analyses	
	SHR (95% CI)	p-value	SHR (95% CI)	p-value	SHR (95% CI)	p-value	SHR (95% CI)	p-value
Age (yr)								
20–40	1		1		1		1	
41–60	0.6 (0.57–0.63)	<0.001	0.73 (0.69–0.77)	<0.001	2.38 (2.04–2.77)	<0.001	2.39 (2.05–2.79)	<0.001
61–70	0.61 (0.57–0.65)	<0.001	0.84 (0.78–0.89)	<0.001	11.57 (9.95–13.46)	<0.001	11.34 (9.74–13.2)	<0.001
71–80	0.66 (0.62–0.7)	<0.001	0.93 (0.87–1.00)	0.067	36.94 (31.79–42.92)	<0.001	33.9 (29.14–39.43)	<0.001
Race								
White	1		1		1		1	
Black	1.43 (1.35–1.52)	<0.001	1.08 (1.02–1.14)	0.005	1.00 (0.95–1.06)	0.918	1.25 (1.18–1.33)	<0.001
Others	0.96 (0.90–1.02)	0.162	1.13 (1.08–1.18)	<0.001	0.55 (0.51–0.59)	<0.001	0.68 (0.64–0.73)	<0.001
Marital status								
Married	1		1		1		1	
Single	1.20 (1.14–1.26)	<0.001	1.24 (1.16–1.31)	<0.001	1.00 (0.95–1.06)	0.962	1.25 (1.18–1.32)	<0.001
Divorce	1.16 (1.11–1.20)	<0.001	0.92 (0.86–0.98)	0.007	2.45 (2.37–2.53)	<0.001	1.38 (1.33–1.42)	<0.001
Location								
Central portion	1		1		1		1	
Upper-inner quadrant	0.80 (0.74–0.87)	<0.001	1.11 (1.03–1.21)	0.009	0.80 (0.74–0.86)	<0.001	0.93 (0.86–1.00)	0.038
Lower-inner quadrant	0.87 (0.80–0.96)	0.004	1.18 (1.07–1.29)	0.001	0.95 (0.87–1.03)	0.177	1.01 (0.93–1.09)	0.854
Upper-outer quadrant	0.75 (0.70–0.80)	<0.001	0.85 (0.79–0.91)	<0.001	0.85 (0.80–0.90)	<0.001	0.99 (0.93–1.05)	0.686
Lower-outer quadrant	0.89 (0.81–0.97)	0.007	1.02 (0.94–1.11)	0.636	0.80 (0.74–0.87)	<0.001	0.93 (0.86–1.01)	0.094
Overlapping lesion	0.85 (0.79–0.91)	<0.001	0.97 (0.91–1.05)	0.497	0.86 (0.80–0.92)	<0.001	0.97 (0.91–1.04)	0.412
Histology								
IDC	1		1		1		1	
ILC	1.32 (1.23–1.41)	<0.001	1.16 (1.08–1.24)	<0.001	1.20 (1.13–1.27)	<0.001	0.91 (0.86–0.97)	0.004
IDC+ILC	1.12 (1.05–1.19)	<0.001	1.00 (0.94–1.06)	0.952	0.95 (0.90–1.01)	0.093	0.91 (0.85–0.96)	0.001
Differentiated grade								
Well	1		1		1		1	
Moderate	2.49 (2.33–2.65)	<0.001	1.95 (1.83–2.09)	<0.001	0.91 (0.88–0.95)	<0.001	1 (0.96–1.04)	0.931
Poor	3.20 (2.99–3.42)	<0.001	2.26 (2.1–2.42)	<0.001	0.70 (0.67–0.73)	<0.001	0.98 (0.93–1.02)	0.308

(continued to the next page)

Table 2. (Continued) LP-BCSD and non-LP-BCSD in univariate and multivariate analysis

Risk Factors	LP-BCSD*				LP-non-BCSD*			
	Univariate analyses		Multivariate analyses		Univariate analyses		Multivariate analyses	
	SHR (95% CI)	p-value	SHR (95% CI)	p-value	SHR (95% CI)	p-value	SHR (95% CI)	p-value
T-classification†								
T1	1		1		1		1	
T2	2.60 (2.51–2.70)	<0.001	1.74 (1.67–1.81)	<0.001	0.89 (0.86–0.93)	<0.001	1.09 (1.05–1.13)	<0.001
T3	3.72 (3.47–3.98)	<0.001	1.86 (1.72–2.00)	<0.001	0.74 (0.67–0.82)	<0.001	1.12 (1.01–1.24)	0.036
T4	5.60 (5.06–6.19)	<0.001	2.57 (2.31–2.87)	<0.001	1.21 (1.05–1.39)	0.008	1.22 (1.05–1.42)	0.008
N-classification†								
N0	1		1		1		1	
N1	2.40 (2.30–2.50)	<0.001	1.98 (1.90–2.07)	<0.001	0.74 (0.71–0.77)	<0.001	0.93 (0.89–0.96)	<0.001
N2	4.86 (4.62–5.11)	<0.001	3.54 (3.36–3.74)	<0.001	0.72 (0.67–0.77)	<0.001	0.96 (0.89–1.04)	0.299
N3	7.73 (7.26–8.22)	<0.001	5.25 (4.91–5.62)	<0.001	0.64 (0.57–0.72)	<0.001	0.86 (0.76–0.97)	0.017
Stage‡								
I	1				1			
II	2.58 (2.47–2.69)	<0.001	-	-	0.81 (0.79–0.84)	<0.001	-	-
III	6.69 (6.38–7.01)	<0.001	-	-	0.71 (0.67–0.75)	<0.001	-	-
ER								
Negative	1				1			
Positive	1.16 (1.11–1.21)	<0.001	-	-	1.45 (1.39–1.51)	<0.001	-	-
PR								
Negative	1				1			
Positive	0.99 (0.95–1.03)	0.648	-	-	1.11 (1.07–1.15)	<0.001	-	-
HR								
Negative	1		1		1		1	
Positive	1.18 (1.13–1.24)	<0.001	1.54 (1.44–1.64)	<0.001	1.41 (1.35–1.47)	<0.001	1.03 (0.99–1.08)	0.158
Radiotherapy								
Without	1		1		1		1	
With	0.80 (0.78–0.83)	<0.001	0.85 (0.82–0.88)	<0.001	0.70 (0.68–0.72)	<0.001	0.78 (0.75–0.8)	<0.001

LP-BCSD = later period breast cancer-specific death; LP-non-BCSD = later period non-breast cancer-specific death; SHR = subdistribution hazard ratio; CI = confidence interval; HR = hormone receptor; IDC = infiltrating duct carcinoma; ILC = infiltrating lobular carcinoma; ER = estrogen receptor; PR = prognosis receptor; AJCC = American Joint Committee on Cancer.

*LP-BCSD and LP-non-BCSD were conducted using the Fine and Gray competing regression model, †Stage TNM, T, N-classification according to 8th edition of AJCC staging.

Stratified analysis for LP-BCSD and LP-non-BCSD according to HR status

The stratified analyses included age at diagnosis, ethnicity, differentiation, histological type, T-classification N-classification, and TNM stage. The 20–40 year-old and 40–60 year-old subgroups had 130.29% and 18.37% increased risks of LP-BCSD, respectively, in the HR+ subgroup (**Figure 2**). In the 70–80 year-old subgroup, the risk of LP-BCSD in the HR+ subgroup had a decreasing trend, without a statistically significant difference (**Figure 3**). In the low stage subgroup (including T1, N0 and stage I), the patients with HR+ tumors had less LP-BCSD (**Figure 2**). Regarding the LP-non-BCSD, there was no significant difference in all age subgroups (**Figure 2**). LP-BCSD played a key role in all causes of death in the 20–40 year-old and 40–60 year-old subgroups. LP-non-BCSD, however, played a key role in all causes of death in the 70–80 year-old subgroups. In the 60–70 year-old subgroup of the HR+ group, the LP-non-BCSD exceeded the LP-BCSD at 115 months; it exceeded the LP-BCSD at 77 months in the HR- breast cancer group and played a key role in all causes of death (**Figure 3**).

Impact of HR status on LP-BCSD and LP-non-BCSD adjusted for age

The SHR for LP-BCSD of HR+ was 1.24 (95% CI, 1.18–1.30) in the presence of age adjustment, which was significantly different ($p < 0.001$). However, the SHR for LP-non-BCSD of HR+ was 0.99 (95% CI, 0.95–1.04), without statistical significance ($p = 0.688$). Thus, only the factor of age, rather than HR status, was good predictors of increased LP-non-BCSD.

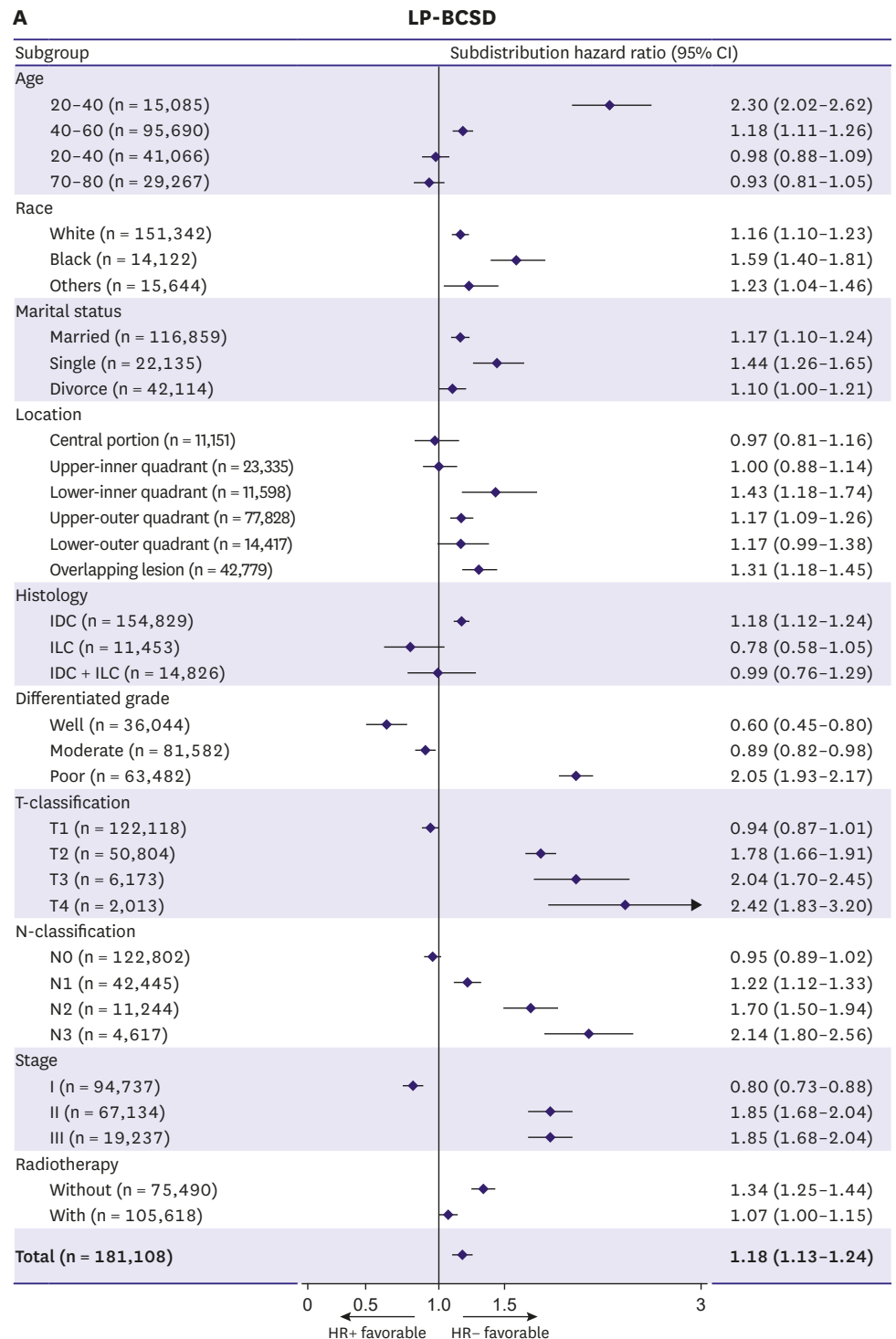


Figure 2. Forest plot of the subgroup analysis for LP-BCSD and LP-non-BCSD according to HR status. (A) The forest plot of subgroup (HR+ vs. HR-) analysis for LP-BCSD. In the low-stage subgroups (including T1, N0 and stage I), patients with HR+ tumors had less LP-BCSD. (B) The forest plot of subgroup (HR+ vs. HR-) analysis for LP-non-BCSD; there was no difference in all 4 age subgroups.

LP-BCSD = later period breast cancer-specific death; LP-non-BCSD = later period non-breast cancer-specific death; HR = hormone receptor; IDC = infiltrating duct carcinoma; ILC = infiltrating lobular carcinoma; SHR = subdistribution hazard ratio; CI = confidence index.

(continued to the next page)

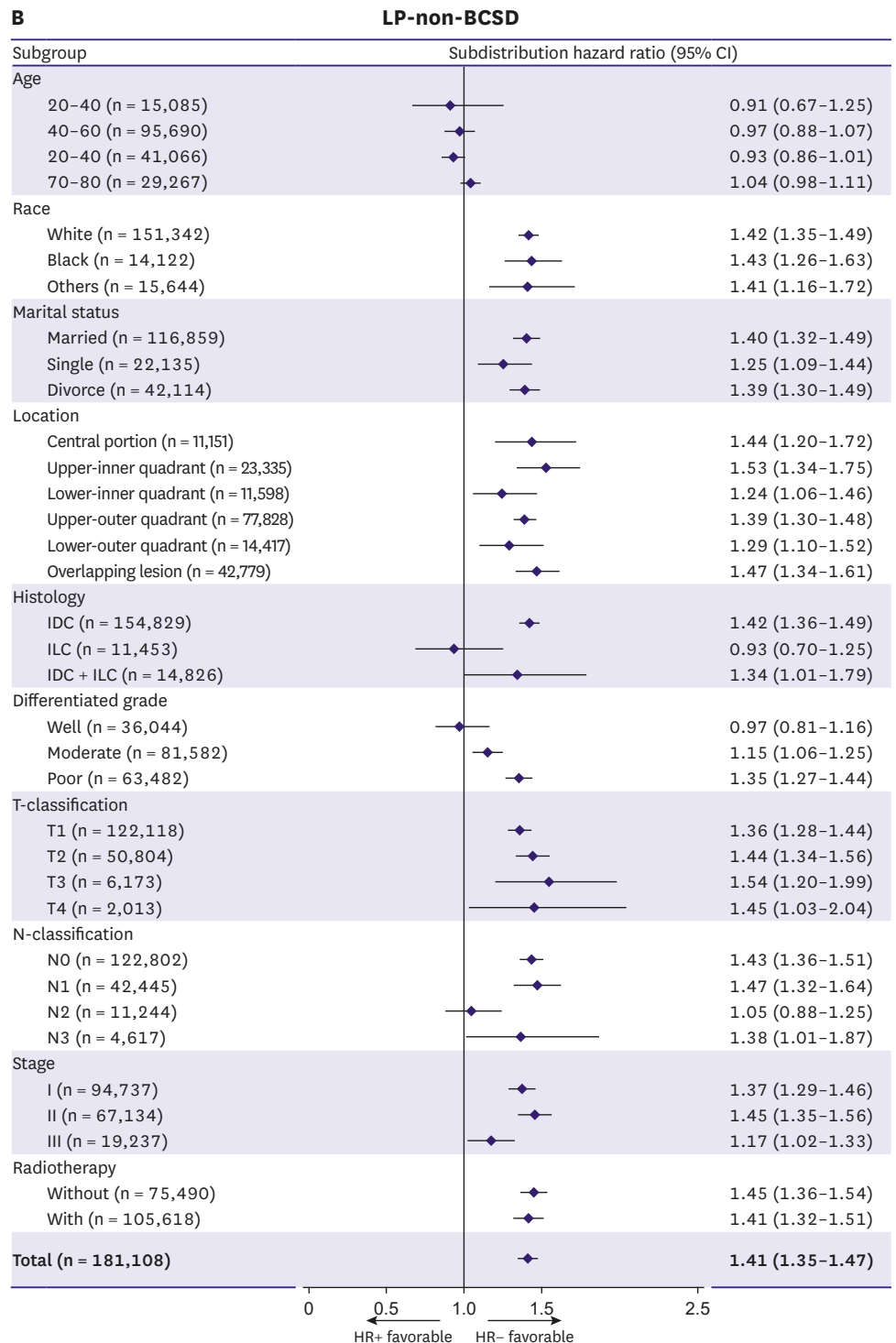


Figure 2. (Continued) Forest plot of the subgroup analysis for LP-BCSD and LP-non-BCSD according to HR status. (A) The forest plot of subgroup (HR+ vs. HR-) analysis for LP-BCSD. In the low-stage subgroups (including T1, N0 and stage I), patients with HR+ tumors had less LP-BCSD. (B) The forest plot of subgroup (HR+ vs. HR-) analysis for LP-non-BCSD; there was no difference in all 4 age subgroups.

LP-BCSD = later period breast cancer-specific death; LP-non-BCSD = later period non-breast cancer-specific death; HR = hormone receptor; IDC = infiltrating duct carcinoma; ILC = infiltrating lobular carcinoma; SHR = subdistribution hazard ratio; CI = confidence index. (continued to the next page)

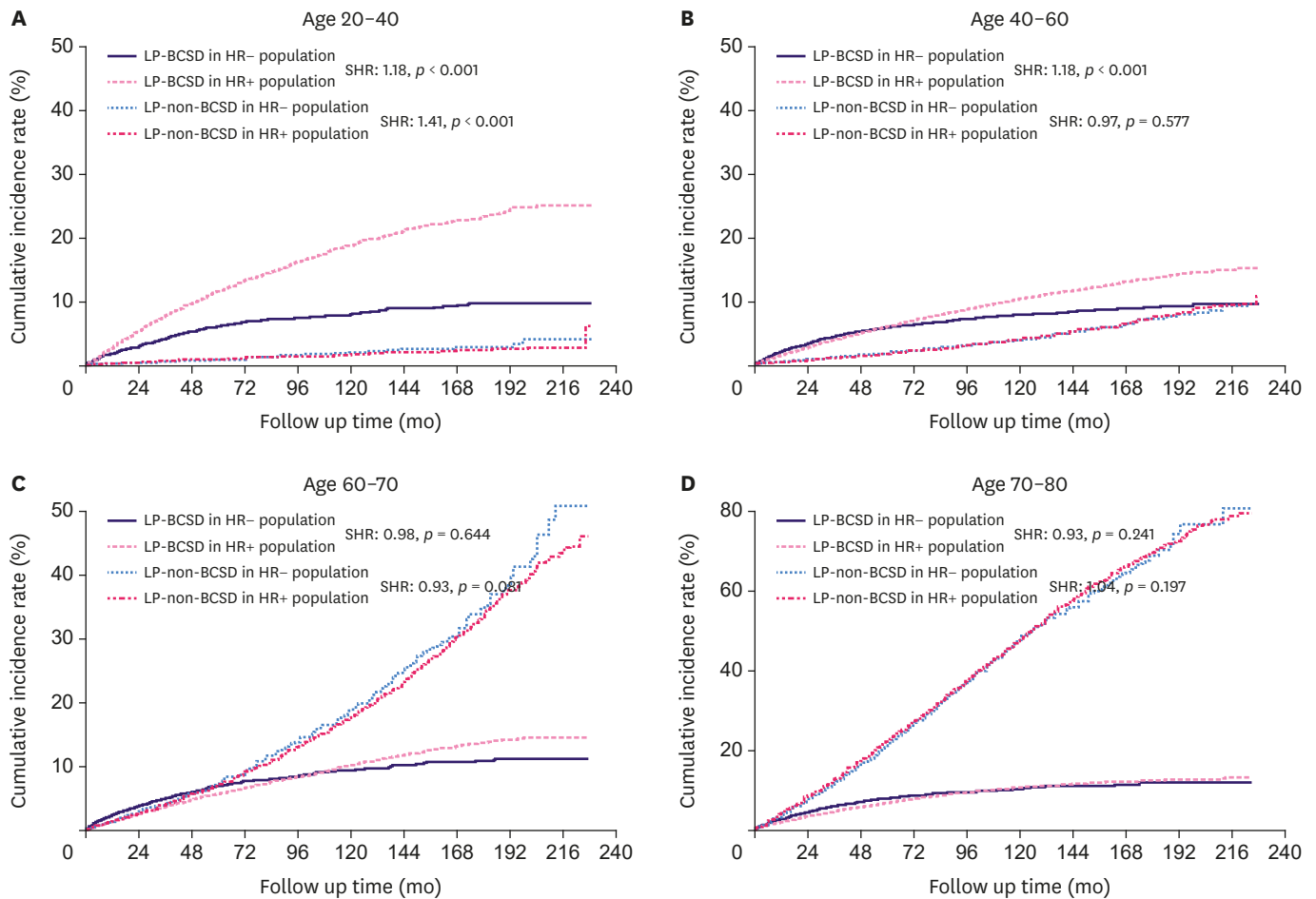


Figure 3. Impact of HR status on LP-BCSD and LP-non-BCSD by subgroup analysis according to age subgroups. (A) In the 20–40 year-old subgroup, patients with HR+ breast cancer had more LP-BCSD than patients with HR– breast cancer (SHR, 2.30; 95% CI, 2.02–2.62; $p < 0.001$). Moreover, the risk of LP-BCSD was higher than LP-non-BCSD in both the HR+ and HR– subgroups. (B) In the 40–60 year-old subgroup, patients with HR+ breast cancer had more LP-BCSD than patients with HR– breast cancer (SHR, 1.18; 95% CI, 1.11–1.26; $p < 0.001$). Moreover, the risk of LP-BCSD was higher than LP-non-BCSD in both the HR+ and HR– subgroups. (C) In the 60–70 year-old subgroup, the risk of LP-BCSD in HR+ breast cancer was similar to that of HR– breast cancer (SHR, 0.98; 95% CI, 0.88–1.09; $p = 0.644$). Moreover, the risk of LP-BCSD was exceeded by that of LP-non-BCSD in both the HR+ and HR– subgroups. (D) In the 70–80 year-old subgroup, the risk of LP-BCSD in the HR+ subgroup has a decreasing trend compared to that of the HR– subgroup, without a statistically significant difference (SHR, 0.93; 95% CI, 0.81–1.05; $p = 0.241$). The risk of LP-BCSD had been exceeded by LP-non-BCSD in both the HR+ and HR– subgroups at the beginning of follow up. LP-BCSD = later period breast cancer-specific death; LP-non-BCSD = later period non-breast cancer-specific death; HR = hormone receptor; SHR = subdistribution hazard ratio; CI = confidence index.

DISCUSSION

Patients with resectable breast cancer who have survived for > 5 years after diagnosis remain at a considerable risk of death. The probability of LP-non-BCSD has exceeded LP-BCSD, particularly in old women. Moreover, we found that LP-non-BCSD exceeded LP-BCSD in the 10-year cumulative incidence at 64 years old. We found that the HR+ LP-BCSD exceeded HR– LP-BCSD at 115 months. HR+ was proven to be a risk factor of LP-BCSD in young women (≤ 60 years old), rather than in old women. LP-BCSD played a key role in all causes of death in the 20–40 year-old and 40–60 year-old subgroups. LP-non-BCSD played a key role in all causes of death in the 70–80 year-old subgroup. In the 60–70 year-old subgroup of the HR+ group, the LP-non-BCSD exceeded the LP-BCSD at 115 months. The LP-non-BCSD exceeded the LP-BCSD at 77 months in the HR– breast cancer group and played a key role in all causes of death. The association between HR+ and LP-non-BCSD was eliminated after adjusting

for age. HR+ was proven to be associated with a higher risk of LP-non-BCSD due to the multicollinearity observed between the covariates of HR and age.

In our previous study, when BCSD was considered as the primary endpoint, the BCSD curve for HR+ and HR- groups crossed only in young women (age ≤ 60 or premenopausal women) rather than in old women (age > 60 or postmenopausal women) [9]. This finding demonstrated that the risk of death for postmenopausal HR+ patients was no longer higher than that of HR- patients at > 5 years since the initial diagnosis. Our findings were further confirmed in the subgroup analyses. Four previous clinical trials indicated that extended adjuvant ET could improve disease-free survival (DFS). Only postmenopausal women were enrolled in the previously described trials. Based on our results, HR+ status was related to more LP-BCSD in young women, rather than in the old women. Therefore, we have reason to question whether the extended adjuvant ET could really provide more benefits to premenopausal women. Several previous studies have shown that the poor outcomes in premenopausal women with ET was mainly due to primary endocrine therapy resistance [10,11]. Survival benefits of extended tamoxifen administration for young women have been demonstrated by subgroup analysis [12].

Ignoring the impact of non-BCSD would confuse the interpretation of the benefits of extended adjuvant ET trials. The randomized controlled trials of MA.17R indicated a significant reduction of DFS events (91% vs. 95%; SHR, 0.66; 95% CI, 0.48–0.91; $p = 0.01$) [13]. However, a similar study (NSABP B-42) showed that extended ET could only improve DFS from 81.3% to 84.7%, while it failed to meet its primary endpoint-DFS, with $p = 0.048$ ($p < 0.0418$ was prospectively set as the significance level) [14]. Moreover, carefully considering the differences between MA.17R and NSABP B-42, the DFS was defined as survival without recurrence, second primary cancer, and new breast cancer events in MA.17R [13], while it was defined as survival without recurrence, second primary cancer, new breast cancer events, and non-BCSD in NSABP B-42 [15]. Thus, the non-BCSD occurrence was considered in NSABP B-42 and not in MA.17R. The efficacy of extended adjuvant endocrine therapy would be diluted by non-BCSD in NSABP B-42, which partly explained the different outcomes. It has been argued that trials of ET should censor non-BCSD in primary analyses. Based on our finding, not only should the definition of the primary endpoint be altered to include BCSD but also the sample size estimation should consider non-BCSD [16].

HR+ was proven to be associated with a higher risk of LP-non-BCSD through age. The question arises as to whether ET will result in more non-BCSD? A meta-analysis demonstrated that the toxicities of ET were associated with more non-BCSD [17]. However, in a similar study, favorable DFS was demonstrated to correlate with endocrine treatment-related symptoms. In our analysis, HR+ was no longer related to more LP-non-BCSD based on the subgroup analysis and analysis for age adjustment. A recent study, which used the National Cancer Data Base indicated that the administration of ET among HR+ cancer patients increased to 82.4% in 2013, which changed by 1.51% per year. In patients with HR- cancer, the ET administration decreased to 3.4%, which was an 0.17% annual reduction [18]. Another study, which used the SEER-Medicare data showed that the use of ET was approximately 10% underreported because outpatient therapy is not always reported in hospital records [19]. Therefore, to a large extent, the association between HR+ and LP-non-BCSD that was identified in the current study supported that ET was not associated with LP-non-BCSD in the real-world.

Previous studies have identified factors that are related to the potential risks for the late recurrence of breast cancer. A study identified that HR+ and HER2- patients have a higher risk of recurrence at > 5 years, particularly in patients with a high ER titer [20]. Another study found that PR positivity and lymph node metastases were significantly correlated to late recurrence [21]. In the present study, patients who were young; of black ethnicity, single, and had poorly differentiated grade, large tumors; and had lymph node involvement were also independently associated with more LP-BCSD. Recently, molecular assay studies, such as 12-gene EndoPredict, Breast Cancer Index, or 50 gene PAM50 ROR, were built to predict the risk of late recurrence. However, these multiparameter assays are also limited by availability and cost [20]. Risk factors based on clinicopathological parameters remain the key to clinical decision-making in our practice.

Different schedules of treatment, including the use of upfront aromatase inhibitors (AIs) or sequential use of tamoxifen and AIs, are known for their drug-specific side effects. Tamoxifen is associated with increased risks of uterine cancer and thromboembolism [22]. AIs have a different safety profile that are predominantly predictable consequences of estrogen deprivation, such as musculoskeletal events, bone loss, and cardiovascular events. Seven trials that comprised 16,349 patients analyzed the reported toxicity of extended endocrine treatment with AIs. Longer treatment with AIs was associated with increased risks of cardiovascular events, bone fractures, and cessation of treatment due to adverse events. Extended use of AIs did not influence the risk of a second malignancy; however, a numerical excess in deaths without breast cancer recurrence was found with extended AI therapy [23]. Previous studies have investigated the correlation between treatment efficacy and adverse events that were caused by endocrine therapy; however, the results were inconsistent across trials.

Our study may have several potential limitations. Some biases were inevitable due to the retrospective nature of the study. Moreover, the HER2 status and Ki-67 were not available in SEER prior to the year 2010, partly due to the lack of attention paid to molecular biology in earlier years. There is no record of adjuvant ET in the SEER data, which is recognized as an important variable in our study. The SEER data does not provide information regarding the recurrence and metastasis of the disease, and the inclusion of patients who have survived for > 5 years and then exhibit signs of recurrence and metastasis will result in bias. We would urge caution and not advocate guiding clinical decision making based on our findings.

In conclusion, HR+ was associated with more LP-BCSD in the young population. Prospective studies should be carried out to explore the efficacy of extended adjuvant ET in young patients. As for older patients, more efforts should be devoted to reducing the risk of non-BCSD and encouraging healthy lifestyles, and extended ET should be cautiously recommended. Moreover, in further clinical trials, BCSD may be an alternative endpoint instead of overall survival.

ACKNOWLEDGMENTS

We acknowledge the efforts of the Surveillance, Epidemiology, and End Results (SEER) Program tumor registries for creating the SEER database.

SUPPLEMENTARY MATERIAL

Supplementary Fig. 1

Inclusion and exclusion criteria in SEER.

[Click here to view](#)

REFERENCES

1. Copson E, Eccles B, Maishman T, Gerty S, Stanton L, Cutress RI, et al. Prospective observational study of breast cancer treatment outcomes for UK women aged 18–40 years at diagnosis: the POSH study. *J Natl Cancer Inst* 2013;105:978-88.
[PUBMED](#) | [CROSSREF](#)
2. Hähnel R, Spilsbury K. Oestrogen receptors revisited: long-term follow up of over five thousand breast cancer patients. *ANZ J Surg* 2004;74:957-60.
[PUBMED](#) | [CROSSREF](#)
3. Herold CI, Djulbegovic B, Hozo I, Lyman GH. Reliable data on 5- and 10-year survival provide accurate estimates of 15-year survival in estrogen receptor-positive early-stage breast cancer. *Breast Cancer Res Treat* 2010;121:771-6.
[PUBMED](#) | [CROSSREF](#)
4. Kennecke HF, Olivotto IA, Speers C, Norris B, Chia SK, Bryce C, et al. Late risk of relapse and mortality among postmenopausal women with estrogen responsive early breast cancer after 5 years of tamoxifen. *Ann Oncol* 2007;18:45-51.
[PUBMED](#) | [CROSSREF](#)
5. O'Leary CG, Ellis H, Higgins M. Extended adjuvant endocrine therapy in hormone-receptor-positive early breast cancer. *Curr Opin Oncol* 2016;28:455-60.
[PUBMED](#) | [CROSSREF](#)
6. Overmoyer B. Treatment with adjuvant endocrine therapy for early-stage breast cancer: is it forever? *J Clin Oncol* 2015;33:823-8.
[PUBMED](#) | [CROSSREF](#)
7. Gray RJ. A class of K-sample tests for comparing the cumulative incidence of a competing risk. *Ann Stat* 1988;16:1140-54.
[CROSSREF](#)
8. Fine JP, Gray RJ. A proportional hazards model for the subdistribution of a competing risk. *J Am Stat Assoc* 1999;94:496-509.
[CROSSREF](#)
9. Fu J, Wu L, Jiang M, Li D, Jiang T, Fu W, et al. Real-world impact of non-breast cancer-specific death on overall survival in resectable breast cancer. *Cancer* 2017;123:2432-43.
[PUBMED](#) | [CROSSREF](#)
10. Ribnikar D, Ribeiro JM, Pinto D, Sousa B, Pinto AC, Gomes E, et al. Breast cancer under age 40: a different approach. *Curr Treat Options Oncol* 2015;16:16.
[PUBMED](#) | [CROSSREF](#)
11. Christinat A, Di Lascio S, Pagani O. Hormonal therapies in young breast cancer patients: when, what and for how long? *J Thorac Dis* 2013;5 Suppl 1:S36-46.
[PUBMED](#)
12. Davies C, Pan H, Godwin J, Gray R, Arriagada R, Raina V, et al. Long-term effects of continuing adjuvant tamoxifen to 10 years versus stopping at 5 years after diagnosis of oestrogen receptor-positive breast cancer: ATLAS, a randomised trial. *Lancet* 2013;381:805-16.
[PUBMED](#) | [CROSSREF](#)
13. Goss PE, Ingle JN, Pritchard KI, Robert NJ, Muss H, Gralow J, et al. Extending aromatase-inhibitor adjuvant therapy to 10 years. *N Engl J Med* 2016;375:209-19.
[PUBMED](#) | [CROSSREF](#)
14. Mamounas EP, Bandos H, Lembersky BC, Geyer CE Jr, Fehrenbacher L, Graham ML, et al. Abstract S1-05: a randomized, double-blinded, placebo-controlled clinical trial of extended adjuvant endocrine therapy (tx) with letrozole (L) in postmenopausal women with hormone-receptor (+) breast cancer (BC) who have completed previous adjuvant tx with an aromatase inhibitor (AI): results from NRG Oncology/NSABP B-42. 2016 San Antonio Breast Cancer Symposium; December 6–10, 2016; San Antonio (TX). Philadelphia

(PA): American Association for Cancer Research; 2017.

[CROSSREF](#)

15. Mamounas EP, Lembersky B, Jeong JH, Cronin W, Harkins B, Geyer C, et al. NSABP B-42: a clinical trial to determine the efficacy of five years of letrozole compared with placebo in patients completing five years of hormonal therapy consisting of an aromatase inhibitor (AI) or tamoxifen followed by an AI in prolonging disease-free survival in postmenopausal women with hormone receptor-positive breast cancer. *Clin Breast Cancer* 2006;7:416-21.
[PUBMED](#) | [CROSSREF](#)
16. Jatoi I, Anderson WF, Jeong JH, Redmond CK. Breast cancer adjuvant therapy: time to consider its time-dependent effects. *J Clin Oncol* 2011;29:2301-4.
[PUBMED](#) | [CROSSREF](#)
17. Amir E, Seruga B, Niraula S, Carlsson L, Ocaña A. Toxicity of adjuvant endocrine therapy in postmenopausal breast cancer patients: a systematic review and meta-analysis. *J Natl Cancer Inst* 2011;103:1299-309.
[PUBMED](#) | [CROSSREF](#)
18. Daly B, Olopade OI, Hou N, Yao K, Winchester DJ, Huo D. Evaluation of the quality of adjuvant endocrine therapy delivery for breast cancer care in the United States. *JAMA Oncol* 2017;3:928-35.
[PUBMED](#) | [CROSSREF](#)
19. Mariotto A, Feuer EJ, Harlan LC, Wun LM, Johnson KA, Abrams J. Trends in use of adjuvant multi-agent chemotherapy and tamoxifen for breast cancer in the United States: 1975-1999. *J Natl Cancer Inst* 2002;94:1626-34.
[PUBMED](#) | [CROSSREF](#)
20. Wangchinda P, Ithimakin S. Factors that predict recurrence later than 5 years after initial treatment in operable breast cancer. *World J Surg Oncol* 2016;14:223.
[PUBMED](#) | [CROSSREF](#)
21. Nishimura R, Osako T, Nishiyama Y, Tashima R, Nakano M, Fujisue M, et al. Evaluation of factors related to late recurrence--later than 10 years after the initial treatment--in primary breast cancer. *Oncology* 2013;85:100-10.
[PUBMED](#) | [CROSSREF](#)
22. Goss PE, Muss HB, Ingle JN, Whelan TJ, Wu M. Extended adjuvant endocrine therapy in breast cancer: current status and future directions. *Clin Breast Cancer* 2008;8:411-7.
[PUBMED](#) | [CROSSREF](#)
23. Goldvaser H, Barnes TA, Šeruga B, Cescon DW, Ocaña A, Ribnikar D, et al. Toxicity of extended adjuvant therapy with aromatase inhibitors in early breast cancer: a systematic review and meta-analysis. *J Natl Cancer Inst* 2018;110:31-9.
[PUBMED](#) | [CROSSREF](#)