

# Development of mucosal-associated invariant T cells

Hui-Fern Koay, Dale I Godfrey & Daniel G Pellicci

Department of Microbiology and Immunology, Peter Doherty Institute for Infection and Immunity, University of Melbourne, Melbourne, VIC 3000, Australia

## Keywords

Development of MAIT cells, mucosal-associated invariant T cells, T-cell receptor.

## Correspondence

Dale I Godfrey and Daniel G Pellicci,  
Department of Microbiology and  
Immunology, Peter Doherty Institute for  
Infection and Immunity, University of  
Melbourne, Melbourne, VIC 3000, Australia.  
E-mails: godfrey@unimelb.edu and  
pellicci@unimelb.edu.au

Received 5 March 2018; Revised 13 March  
2018; Accepted 13 March 2018

doi: 10.1111/imcb.12039

*Immunology & Cell Biology* 2018; **96**:  
598–606

## INTRODUCTION

Mucosal-associated invariant T (MAIT) cells are a highly conserved population of T lymphocytes that exhibit innate-like functions similar to those described for natural killer T (NKT) cells.<sup>1–4</sup> MAIT cells are defined by their invariant T-cell receptor (TCR)- $\alpha$  chain, and their restriction to the nonpolymorphic major histocompatibility complex class I-like molecule, MHC-related protein 1 (MR1).<sup>2</sup> In mice, MAIT cells express a TCR comprising of V $\alpha$ 19 joined to J $\alpha$ 33, which pairs with V $\beta$ 6 or V $\beta$ 8.<sup>5–7</sup> In humans, MAIT cells predominantly express V $\alpha$ 7.2 joined to J $\alpha$ 33, J $\alpha$ 20 or J $\alpha$ 12, and these pair with V $\beta$ 2 or V $\beta$ 13.<sup>3,5,7</sup> Smaller subsets of MR1-restricted V $\alpha$ 7.2<sup>–</sup> T cells have been identified in humans,<sup>8–10</sup> although this review will focus on the major population of V $\alpha$ 7.2<sup>+</sup> MAIT cells, herein simply described as MAIT cells.

In this issue, Lantz and Legoux<sup>11</sup> provide a historical perspective of the MAIT cell field, including the initial identification and the description of MAIT cells as “mucosal-associated” due to their presence within the gut lamina propria.<sup>2</sup> It is now appreciated that MAIT cells can be found in all sites where conventional T cells

## Abstract

Mucosal-associated invariant T (MAIT) cells develop in the thymus and migrate into the periphery to become the largest antigen-specific  $\alpha\beta$  T-cell population in the human immune system. However, the frequency of MAIT cells varies widely between human individuals, and the basis for this is unclear. While MAIT cells are highly conserved through evolution and are phenotypically similar between humans and mice, they represent a much smaller proportion of total T cells in mice. In this review, we discuss how MAIT cells transition through a three-stage development pathway in both mouse and human thymus, and continue to mature and expand after they leave the thymus. Moreover, we will explore and speculate on how specific factors regulate different stages of this process.

are present,<sup>6,12,13</sup> although functionally distinct subsets of MAIT cell exist at mucosal sites, suggesting an important role for these cells in barrier tissue immunity.<sup>12,14</sup> MAIT cells are abundant in humans, making up to 10% of T cells in peripheral blood and up to 50% in the liver,<sup>14,15</sup> yet their frequency can significantly vary between individuals.<sup>13,15–17</sup> In mice, the frequency of MAIT cells is much lower, and it is currently unclear what factors regulate MAIT cell numbers and cause this disparity between species.<sup>6,7,16</sup> Our understanding of human MAIT cells has progressed predominantly through the study of CD3<sup>+</sup> V $\alpha$ 7.2<sup>+</sup> CD161<sup>hi</sup> T cells, which incorporates most MAIT cells in peripheral blood and organs.<sup>13,18,19</sup> Conversely, because MAIT cell numbers in laboratory mice are very low, and monoclonal antibodies against the invariant mouse MAIT TCR $\alpha$  chain do not exist, V $\alpha$ 19J $\alpha$ 33 transgenic mice were established to investigate the biology of mouse MAIT cells.<sup>16,20</sup> The discovery of riboflavin derivatives as antigens (Ags) for MAIT cells<sup>21,22</sup> (described in this issue by Kjer-Nielsen, Corbett and colleagues<sup>23</sup>), coupled with the production of MR1 tetramers that incorporate these Ags,<sup>5</sup> has fueled new studies into the development and function of MAIT cells. These tetramer reagents now provide a basis for

distinguishing MAIT cells from other T-cell populations that share similar phenotypic markers.<sup>8,9,24,25</sup>

MR1 is expressed at low levels in a wide range of tissues<sup>26,27</sup> and shows strong evolutionary conservation between species.<sup>28</sup> This, together with the broad microbial reactivity of MAIT cells suggests that they play a key role in host immunity.<sup>29-32</sup> The role that MAIT cells play in microbial immunity is extensively reviewed in this issue by Ussher, Willberg and Klenerman (MAIT cells and Viruses)<sup>33</sup> and Meermeier, Harriff, Karamooz and Lewinsohn (MAIT cells and Microbial Immunity).<sup>34</sup> Given the wide variation in MAIT cell frequency between individuals<sup>13,16,19,35</sup> and evidence that reduced MAIT cell numbers are associated with aberrant immune responses in humans and mice,<sup>29-31,36-39</sup> it is important to understand how MAIT cells develop and determine what factors regulate this process. In this review, we describe how MAIT cells undergo a three-stage development pathway within the thymus and continue to mature after they enter the periphery, in both mice and humans. In addition, we examine similarities and differences with the development of NKT cells, which may compete with MAIT cells for a similar environmental niche.

## THYMIC SELECTION

Studies in mice revealed that MAIT cells arise intrathymically following interaction of the MAIT TCR with MR1.<sup>2,7,16,40</sup> Furthermore, analysis of V $\alpha$ 19-J $\alpha$ 33 C $\alpha$ <sup>-/-</sup> and V $\beta$ 6 transgenic mice revealed that MAIT cells are selected by MR1-expressing DP cortical thymocytes, compared to thymic epithelial cells that select MHC/peptide reactive T cells.<sup>40</sup> It is currently unclear whether specific Ags must be presented in association with MR1 for intrathymic selection, and if so, the nature of the selecting Ags. Selection may require agonist ligands like the MAIT activating riboflavin derivative Ags such as 5-(2-oxopropylideneamino)-6-D-ribitylaminouracil (5-OP-RU) and 5-(2-oxoethylideneamino)-6-D-ribitylaminouracil (5-OE-RU).<sup>22</sup> Alternatively, MAIT cells might be selected by a weak or nonagonist Ag, such as 6-formylpterin (6-FP), a vitamin B9 derivative that binds to MR1 but does not activate the majority of MAIT cells.<sup>21,41</sup> Although these vitamin-derivative Ags have microbial or dietary origins, it is also possible that MAIT cells are selected in the context of an endogenous self-Ag produced in the thymus. Early evidence supported a role for microbial derived Ags for the selection of MAIT cells as these cells could not be detected in germ-free (GF) mice using RT-PCR.<sup>2</sup> We recently re-examined GF mice using MR1 tetramers and detected the presence of normal numbers of immature MAIT cells in the thymus, but these cells were unable to fully mature and expand in the periphery.<sup>24</sup> These data suggest that

microbial colonization is not required for the initial selection of MAIT cells, but is essential for their subsequent expansion.<sup>16,24</sup> Another important question surrounding the selection of MAIT cells is whether their TCR repertoire is shaped by negative selection. Like MAIT cells, NKT cells are selected by DP cortical thymocytes,<sup>42</sup> and *in vivo* injection of the NKT cell agonist Ag  $\alpha$ -galactosylceramide or the addition of this lipid Ag to fetal thymic organ cultures ablated the development of mouse NKT cells, suggesting these cells had undergone negative selection.<sup>43,44</sup> It will be important to establish if similar selection criteria also exist for MAIT cells. For instance, would the overexpression of MR1 or the presence of a high affinity Ag lead to the deletion of MAIT cells? Accordingly, further studies are required to examine the types of Ags (if any) that govern the intrathymic selection of MAIT cells.

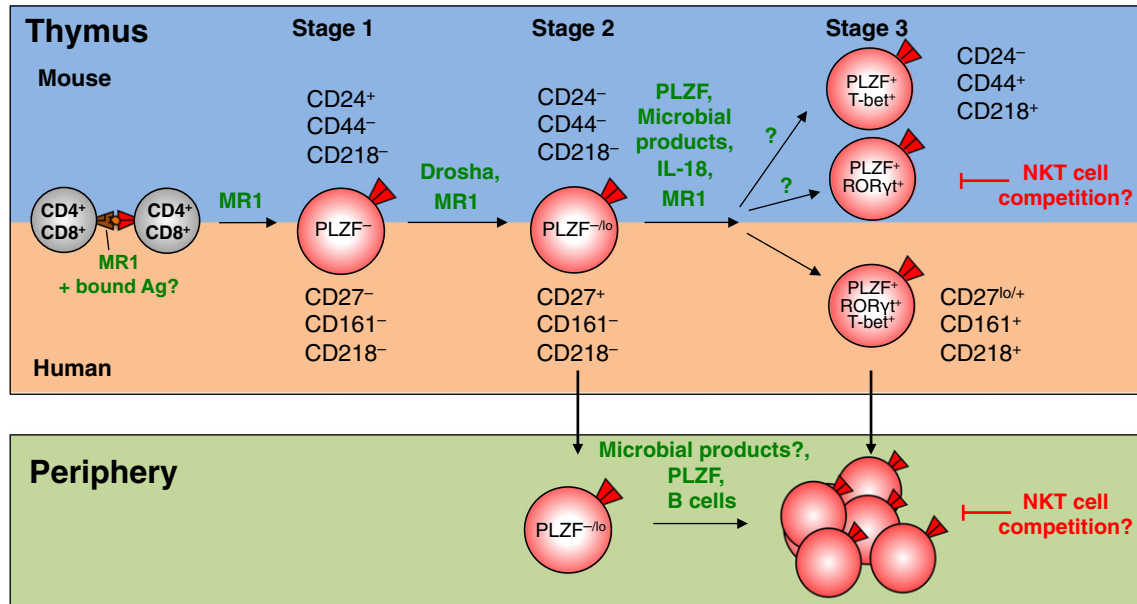
## A THREE-STAGE PATHWAY FOR MAIT CELL DEVELOPMENT IN MICE AND HUMANS

Analysis of MAIT cells from the periphery of WT mice using MR1-5-OP-RU tetramers revealed that they expressed high levels of CD44 and had a memory phenotype, whereas most MAIT cells from V $\alpha$ 19-J $\alpha$ 33 C $\alpha$ <sup>-/-</sup> transgenic mice lacked CD44 expression and were described as naïve.<sup>6,16</sup> Moreover, and in contrast to previous findings,<sup>16</sup> MAIT cells from WT mice expressed the transcription factor, promyelocytic leukemia zinc finger (PLZF).<sup>6,45</sup> PLZF was previously reported to be required for the development of other innate-like T cells such as NKT cells,<sup>46,47</sup> innate lymphoid cells<sup>48,49</sup> and some  $\gamma\delta$  T cells.<sup>50,51</sup> These data highlight important differences in the phenotype of MAIT cells from WT and V $\alpha$ 19 transgenic mice and suggest that the overexpression of the mouse MAIT TCR  $\alpha$ -chain likely alters the development of MAIT cells.

Our studies of mouse thymus revealed three populations of MAIT cells based on their expression of CD24 and CD44, including CD24<sup>+</sup>CD44<sup>-</sup>, CD24<sup>-</sup>CD44<sup>-</sup> and CD24<sup>-</sup>CD44<sup>+</sup> MAIT cells.<sup>24</sup> Through a combination of phenotypic analysis, ontogeny experiments and *in vitro* development studies, we determined that the CD24<sup>+</sup>CD44<sup>-</sup> population were least mature, defined as stage 1 MAIT cells. These give rise to CD24<sup>-</sup>CD44<sup>-</sup> stage 2 cells and ultimately these differentiate into CD24<sup>-</sup>CD44<sup>+</sup> stage 3 cells, which more closely resemble MAIT cells in the periphery (Figure 1). Importantly, MR1 expression appears to be required at each stage of development, as progression from stage 1 to stage 3 *in vitro*, is severely impaired by the addition of an anti-MR1 blocking antibody.<sup>24</sup> These distinct MAIT cell precursor populations were further characterized for expression of

differentiation markers, cytokine receptors and transcription factors (Table 1). For example, PLZF is not expressed in stage 1 MAIT cells, while mature populations of stage 3 MAIT cells express PLZF.<sup>24</sup> This contrasts with the development of NKT cells, as early NKT cell progenitors express high levels of PLZF, and expression levels decline to moderate levels as NKT cells

become more mature, with the notable exception of NKT2 cells that express high levels of PLZF (discussed below).<sup>46</sup> Analysis of PLZF-null mice revealed that the development of stage 1 and 2 MAIT cells was unperturbed, while mature stage 3 cells failed to develop within the thymus and periphery. Moreover, residual MAIT cells from PLZF-null mice were unable to produce



**Figure 1.** A three-stage pathway for MAIT cell development in mice and humans. Competition between MAIT cells and NKT cells for a shared niche in mice.

**Table 1.** Phenotypic characteristics of stage 1, stage 2 and stage 3 thymic MAIT cells in mice and humans.

	Stage 1	Stage 2	Stage 3
CD4 and CD8 coreceptor	CD4 <sup>+</sup> , CD8 <sup>+</sup> or CD4 <sup>+</sup> CD8 <sup>+</sup>	h: CD4 <sup>+</sup> , CD8 <sup>+</sup> or CD4 <sup>+</sup> CD8 <sup>+</sup> m: CD4 <sup>+</sup> , CD8 <sup>+</sup> or CD4 <sup>-</sup> CD8 <sup>-</sup>	CD4 <sup>+</sup> , CD8 <sup>+</sup> or CD4 <sup>-</sup> CD8 <sup>-</sup>
CD8αβ	CD8αβ <sup>+</sup>	CD8αβ <sup>+</sup>	CD8αβ <sup>+</sup>
CD24 (m)	Positive	Negative	Negative
CD27 (h)	Negative	Positive	Low to positive
CD44 (m)	Negative	Negative	Positive
CD62L (m)	Intermediate	n.d.	Negative
CD69 (m)	Positive	n.d.	Negative
CD103 (m)	Negative	n.d.	Low to positive
CD161 (h)	Negative	Negative	Positive (h)
NK1.1 (m)			Low to positive (m)
CD278/ICOS (m)	Negative	n.d.	Positive
Cytokine receptors			
CD122/IL-2Rβ (m)	Negative	n.d.	Intermediate
CD127/IL-7R (m)	Negative	n.d.	Positive
CD218/IL-18R	Negative	n.d.	Positive
Transcription factors			
PLZF	Negative	Low	Positive
T-bet and RORγt	Low	Low	T-bet <sup>+</sup> or RORγt <sup>+</sup> (m) T-bet <sup>+</sup> RORγt <sup>+</sup> (h)

n.d. = not determined; m = mouse; h = human.

cytokines and were hence functionally incompetent.<sup>24</sup> Therefore, PLZF is a critical factor governing the transition from stage 2 to stage 3 MAIT cells, as well as the acquisition of MAIT cell functional potential.

Most studies on MAIT cell development in humans have utilized surrogate markers, such as V $\alpha$ 7.2 or co-expression of V $\alpha$ 7.2 and CD161, to identify MAIT cells. Using this strategy, MAIT-like cells could be detected within human thymus and were shown to express PLZF.<sup>16,52,53</sup> Moreover, Leansyah and colleagues examined a panel of human fetal tissues including the thymus and cord blood, and described a maturation pathway of microbial reactive V $\alpha$ 7.2<sup>+</sup> CD161<sup>+</sup> cells.<sup>52</sup> Our laboratory examined MAIT cells from human thymus using MR1 tetramers and similar to our mouse studies, we identified three populations of MAIT precursors based on the differential expression of cell surface markers.<sup>24</sup> Ontogeny and functional studies showed that stage 1 human MAIT cells could be defined as CD27<sup>-</sup>CD161<sup>-</sup>, followed by stage 2 CD27<sup>+</sup>CD161<sup>-</sup> and then stage 3 CD27<sup>lo/+</sup>CD161<sup>+</sup> (Figure 1 and Table 1). Moreover, the expression of CD161 on MAIT cells from human thymus also coincided with the expression of IL-18R, the latter expressed by stage 3 thymic MAIT cells from both humans and mice (Table 1).<sup>24</sup> Notably, the vast majority of human thymic MAIT cells lack expression of CD161 and these cells would have been excluded from previous studies that relied on CD161 as a surrogate marker of MAIT cells.<sup>16,24,52</sup> In addition, we also found many MAIT-like V $\alpha$ 7.2<sup>+</sup> CD161<sup>+</sup> T cells in human thymus that do not bind MR1-5-OP-RU tetramer, a result that was recently observed by another group with human cord blood and neonatal blood samples.<sup>25</sup> The majority of peripheral blood MAIT cells have upregulated CD161 and IL-18R, although residual CD161<sup>-</sup> IL-18R<sup>-</sup> MAIT cells could still be found in cord blood and young peripheral blood.<sup>24</sup> These data reveal that MAIT cells upregulate CD161 and IL-18R as they exit the thymus or soon after they enter the periphery.

## FACTORS THAT REGULATE MAIT CELL DEVELOPMENT

The identification of a three-stage development pathway for MAIT cells now allows for a detailed assessment of factors that influence this process. In addition to PLZF, we also showed that microRNAs are critical for MAIT cell development, as mice deficient for a member of the RNase III superfamily, Droscha, have drastically reduced MAIT cells and accumulate stage 1 thymic MAIT cells.<sup>24</sup> NKT cells were also diminished in these mice, supporting previous data that microRNAs are required for NKT cell development.<sup>54</sup> Future studies should investigate which

specific microRNAs are important for MAIT cell development and whether there is overlap with the microRNAs shown to be important for the development of NKT cells (e.g. miR150,<sup>55</sup> miR-181 family<sup>56</sup> and miR17-92 family cluster<sup>57</sup>). Let-7 microRNAs will be an important candidate to investigate, as they have been shown to directly target the Zbtb16 gene and downregulate PLZF expression in NKT cells.<sup>58</sup>

The loss of IL-18 and commensal microbiota from GF mice impaired MAIT cell numbers and progression to stage 3 MAIT cells.<sup>24</sup> A previous study also showed that B cells were not required for MAIT cell development, but were required for peripheral expansion.<sup>16</sup> Given that thymic precursors for MAIT cells and NKT cells express similar (but not identical) phenotypic markers and both require PLZF and microRNAs for their development, future studies will likely assess whether other factors are common for their development. For instance, several members of the NF $\kappa$ B family of transcription factors have been shown to be important for NKT cell development.<sup>59</sup> Furthermore, mice deficient for the transcription factors Ror $\gamma$ t, HeLa E-box binding protein and c-Myb, have fewer NKT cells as they are unable to rearrange the distal TCR gene segments due to reduced lifespan of DP thymocytes.<sup>59</sup> Hence, factors that affect thymocyte survival may impact on the development of MAIT cells as the gene encoding the MAIT TCR V $\alpha$ -chain (V $\alpha$ 19) is located at the extreme end of the 5' end of the TCR $\alpha$  locus.<sup>60</sup> Inhibitors of DNA transcription factors (Id2 and Id3), which interact with E proteins, have also been implicated in the development and differentiation of NKT cells,<sup>61-64</sup> and more recently, we showed that members of the linear ubiquitin chain assembly complex, Hoil and Hoip, were required for normal NKT cell development in the thymus.<sup>65</sup> Interestingly, the SLAM/SAP/Fyn pathway does not appear to be necessary for the development of MAIT cells, whereas it is important for the development of NKT cells.<sup>16,66-69</sup> The use of MR1 tetramers in candidate gene knockout mice should lead to the discovery of key molecules that are important for the development of MAIT cells and these can be compared with those that regulate the development of NKT cells.

## MAIT CELL HETEROGENEITY

At least two functionally distinct subsets of stage 3 MAIT cells exist in mice and these develop following the expression of PLZF.<sup>24</sup> The major population of MAIT cells in mice expresses ROR $\gamma$ t and secretes IL-17 upon activation, while a smaller subset expresses T-bet and produces IFN- $\gamma$  upon activation.<sup>6,24</sup> With the exception of PLZF which is high on both these populations, they

are reminiscent of mouse PLZF<sup>lo</sup> T-bet<sup>hi</sup> NKT1 cells and PLZF<sup>int</sup> Ror $\gamma$ t<sup>+</sup> NKT17 cells, which secrete IFN- $\gamma$  and IL-17, respectively.<sup>70</sup> Notably, mouse thymus contains a third population of NKT cells, termed NKT2 cells, which are PLZF<sup>hi</sup> T-bet<sup>lo</sup> cells and predominantly produce IL-4.<sup>70</sup> While low levels of IL-4 production were detected upon stimulation of mouse thymic MAIT cells,<sup>6</sup> a defined population of MAIT cells that are equivalent to NKT2 cells has yet to be identified. In human thymus and peripheral blood, stage 3 MAIT cells coexpress intermediate levels of T-bet and ROR $\gamma$ t and secrete predominantly IFN- $\gamma$  and TNF upon activation.<sup>12,18,24,71-73</sup> This differs to stage 3 MAIT cells from naïve mice, which are mutually exclusive for T-bet and ROR $\gamma$ t expression, although intranasal infection of mice with *Salmonella* Typhimurium causes MAIT cells to coexpress these transcription factors. Thus, previously activated MAIT cells in mice appear to more closely resemble their human counterparts.<sup>32</sup> While very few MAIT cells from human blood appear to produce IL-17, MAIT cells from other human tissues can secrete IL-17. For instance, MAIT cells isolated from the female genital tract express more IL-17 in response to microbial stimuli compared to MAIT cells from peripheral blood.<sup>12</sup> Moreover, tissue resident MAIT cells isolated from human liver vascular beds were the dominant population of IL-17 producing T cells from this tissue<sup>14</sup> and several studies have reported a role for IL-17 producing MAIT cells in various autoimmune diseases (reviewed in this issue by Rouxel and Lehen).<sup>74</sup> Accordingly, mice and humans contain functionally distinct populations of MAIT cells, although the precise molecular mechanisms that underpin the differentiation into each distinct population remain largely unknown.

## EXTRATHYMIC DEVELOPMENT OF MAIT CELLS

MAIT cells continue to mature after they exit the thymus. While stage 3 MAIT cells from human and mouse thymus coexpress CD8 $\alpha$  and CD8 $\beta$ , many peripheral MAIT cells express CD8 $\alpha$  with low or no CD8 $\beta$ .<sup>5,24,52</sup> These data suggest that CD8 $\alpha$ <sup>+</sup> MAIT cells are likely derived from CD8 $\alpha$  $\beta$ <sup>+</sup> MAIT cells.<sup>18,52</sup> Moreover, stage 3 MAIT cells from human thymus have a limited capacity to produce cytokines compared to stage 3 MAIT cells from human blood, suggesting they undergo further maturation in the periphery. In support of this, stage 2 MAIT cells could be detected in the cord blood and the peripheral blood from young donors and stage 2 MAIT cells could be detected in the periphery of PLZF null mice, revealing that MAIT cells can exit the thymus as stage 2 cells, prior to further maturation to stage 3 cells in the periphery.<sup>24</sup> It is

currently unclear what factors drive extrathymic development of MAIT cells, whether it is direct exposure to microbial Ags or other environmental signals such as IL-18 and/or other cytokines.<sup>24</sup>

The variation in MAIT cell frequency between humans and mice highlights important differences in the development and expansion of MAIT cells between these species. Several factors have been proposed to explain these differences. The housing of mice in specific pathogen-free conditions likely limits their exposure to microbial Ags and, as described above, MAIT cells are drastically reduced in GF conditions.<sup>2,24</sup> Interestingly, attempts to reconstitute GF mice with monomicrobial flora or human microbiota only recovered MAIT cell numbers to levels akin to mice housed in specific pathogen-free conditions, thus levels well below those found in humans.<sup>29,45</sup> In contrast, intranasal inoculation of mice with *Francisella tularensis* or *Salmonella* Typhimurium leads to rapid expansion of MAIT cells within the lungs of infected mice, levels more consistent with those observed in humans.<sup>31,32</sup> Future studies will likely examine whether mice caught from the wild or obtained from pet shops have elevated MAIT cells due to increased microbial exposure.

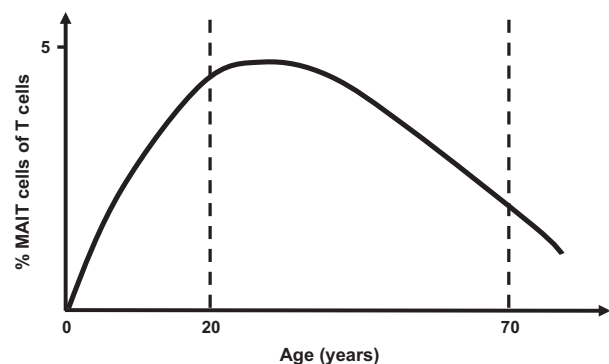
## HOMEOSTASIS AND EXPANSION OF MAIT CELLS

Genetic variability may also contribute to differences in MAIT cell frequency. For example, Cui *et al.* showed that Castaneus mice, a strain of mice originally derived from the wild but housed in specific pathogen-free conditions, had a 20-fold increase in MAIT cell numbers compared to common laboratory strains.<sup>45</sup> The higher number of MAIT cells in Castaneus mice was not due to differences in thymocyte survival but rather to an increase in V $\alpha$ 19-J $\alpha$ 33 transcripts that was linked to a genetic factor mapped to the Castaneus TCR $\alpha$  locus.<sup>45</sup> Intriguingly, we recently showed that MAIT cells are over-represented in NKT cell deficient CD1d<sup>-/-</sup> mice, suggesting that NKT cells and MAIT cells compete for a similar environmental niche (Figure 1).<sup>24</sup> This has important implications for the field because NKT cell deficient mice are often used to assess the role of NKT cells in disease models and it is unclear how MAIT cells contribute to these diseases.<sup>75,76</sup> Furthermore, the frequency of MAIT cells and NKT cells in mice is inverted in humans, such that humans have high numbers of MAIT cells and low numbers of NKT cells, while the reverse is true in mice.<sup>4</sup> Hence, it will be interesting to determine what factors these innate-like T cells are competing for, and if other cell types are also involved in this interplay. For example, it was recently shown in mice that innate

lymphoid cells compete with T cells for a limited supply of IL-7.<sup>77</sup> Furthermore, IL-7 is also required for the homeostasis and survival of mouse NKT17 cells.<sup>78</sup> In contrast to these findings in mice, we recently demonstrated a direct correlation in the frequency of MAIT cells and NKT cells in blood from the same human donor.<sup>19</sup> A similar correlation between MAIT cells and NKT cell frequencies was shown in neonates in a recent study by Ben Youssef and colleagues.<sup>25</sup> Moreover, they also demonstrated a parallel relationship between V $\alpha$ 7.2<sup>+</sup> and V $\alpha$ 7.2<sup>-</sup> subsets of CD161<sup>+</sup> T cells and while the latter population did not bind MR1 tetramer, their data suggests that both populations undergo a similar postnatal development pathway.<sup>25</sup>

These reports collectively support the concept that MAIT cells, NKT cells and related lineages share environmental maintenance factors, such that when the factors are abundant, these cell populations are increased in blood. Clearly, more work is required to fully appreciate the interactions that maintain innate-like T cells in the immune system.

The high abundance of MAIT cells in humans is likely due to ongoing exposure to microbial stimuli, which drives oligoclonal expansion of MAIT cells that have a reduced TCR repertoire.<sup>7,45,79</sup> The frequency of MAIT cells increases with age such that very few MAIT cells are observed in the cord blood, presumably due to limited microbial exposure in the womb, while the numbers of MAIT cells increase in the blood from neonates and steadily rise until young adulthood (~30 years of age) before declining over subsequent decades<sup>16,18,24,25,35,52,80</sup> (Figure 2). It is currently unclear how reduced numbers of MAIT cells impacts on the immune system of older individuals, although it is well described that as humans age they become increasingly immunocompromised.<sup>81,82</sup> Thus, one key factor that underpins the variability of MAIT cells in humans appears to be age, with optimal



**Figure 2.** A schematic depicting the percentage of MAIT cells of total T cells through ontogeny.

MAIT cell numbers coinciding with optimal immunological fitness.

Taken together, these data highlight how MAIT cells continue to develop and expand after they exit the thymus and this process is likely dependent on microbial stimuli.

## CONCLUDING REMARKS

MAIT cells, on average, represent the most abundant  $\alpha\beta$  T-cell population with a single specificity in the human immune system. Understanding MAIT cell development and homeostasis cells may provide important clues as to why MAIT cell numbers vary between individuals (and species). The recent mapping of a three-stage MAIT cell development pathway in mice and humans is facilitating further studies to determine the factors that govern this process. There appears to be functional overlap of MAIT cells with other innate-like T-cell populations and we must carefully assess the role of these different cell types in the context of microbial immunity. It will also be interesting to address how other related T-cell subsets develop, including atypical MR1-restricted V $\alpha$ 7.2<sup>-</sup> T cells and populations of V $\alpha$ 7.2<sup>-</sup>CD161<sup>+</sup> T cells, that do not bind MR1 tetramer but share similar characteristics with MAIT cells. Future studies into the development and homeostasis of MAIT cells (and related subsets thereof) may lead to the identification of novel targets to modulate the numbers of these cells which would be valuable in settings where they are depleted, potentially leading to a compromised immune system, such as in cancer and HIV patients.

## ACKNOWLEDGMENTS

DGP is supported by a National Health and Medical Research Council (NHMRC) Career Development Fellowship (1144308). DIG is supported by an NHMRC Senior Principal Research Fellowship (1020770 and 1117766). The authors are supported by NHMRC project grants 1145373, 1122890 and 1140126 and the Australian Research Council (ARC; CE140100011).

## CONFLICT OF INTEREST

The authors declare no conflict of interest.

## REFERENCES

1. Bendelac A, Savage PB, Teyton L. The biology of NKT cells. *Annu Rev Immunol* 2007; **25**: 297–336.
2. Treiner E, Duban L, Bahram S, *et al.* Selection of evolutionarily conserved mucosal-associated invariant T cells by MR1. *Nature* 2003; **422**: 164–169.

3. Porcelli S, Yockey CE, Brenner MB, *et al.* Analysis of T cell antigen receptor (TCR) expression by human peripheral blood CD4-8 $\alpha$ /beta T cells demonstrates preferential use of several V beta genes and an invariant TCR alpha chain. *J Exp Med* 1993; **178**: 1–16.
4. Godfrey DI, Uldrich AP, McCluskey J, *et al.* The burgeoning family of unconventional T cells. *Nat Immunol* 2015; **16**: 1114–1123.
5. Reantragoon R, Corbett AJ, Sakala IG, *et al.* Antigen-loaded MR1 tetramers define T cell receptor heterogeneity in mucosal-associated invariant T cells. *J Exp Med* 2013; **210**: 2305–2320.
6. Rahimpour A, Koay HF, Enders A, *et al.* Identification of phenotypically and functionally heterogeneous mouse mucosal-associated invariant T cells using MR1 tetramers. *J Exp Med* 2015; **212**: 1095–1108.
7. Tilloy F, Treiner E, Park SH, *et al.* An invariant T cell receptor alpha chain defines a novel TAP-independent major histocompatibility complex class Ib-restricted alpha/beta T cell subpopulation in mammals. *J Exp Med* 1999; **189**: 1907–1921.
8. Gherardin NA, Keller AN, Woolley RE, *et al.* Diversity of T cells restricted by the MHC class I-related molecule MR1 facilitates differential antigen recognition. *Immunity* 2016; **44**: 32–45.
9. Meermeier EW, Laugel BF, Sewell AK, *et al.* Human TRAV1-2-negative MR1-restricted T cells detect *S. pyogenes* and alternatives to MAIT riboflavin-based antigens. *Nat Commun* 2016; **7**: 12506.
10. Lepore M, Kalinichenko A, Calogero S, *et al.* Functionally diverse human T cells recognize non-microbial antigens presented by MR1. *Elife* 2017; **6**: e24476.
11. Lantz O, Legoux F. MAIT cells: an historical and evolutionary perspective. *Immunol Cell Biol* 2018; **96**: 564–572.
12. Gibbs A, Leeansyah E, Introini A, *et al.* MAIT cells reside in the female genital mucosa and are biased towards IL-17 and IL-22 production in response to bacterial stimulation. *Mucosal Immunol* 2017; **10**: 35–45.
13. Dusseaux M, Martin E, Serriari N, *et al.* Human MAIT cells are xenobiotic-resistant, tissue-targeted, CD161hi IL-17-secreting T cells. *Blood* 2011; **117**: 1250–1259.
14. Tang XZ, Jo J, Tan AT, *et al.* IL-7 licenses activation of human liver intrasinusoidal mucosal-associated invariant T cells. *J Immunol* 2013; **190**: 3142–3152.
15. Kurioka A, Ussher JE, Cosgrove C, *et al.* MAIT cells are licensed through granzyme exchange to kill bacterially sensitized targets. *Mucosal Immunol* 2015; **8**: 429–440.
16. Martin E, Treiner E, Duban L, *et al.* Stepwise development of MAIT cells in mouse and human. *PLoS Biol* 2009; **7**: e54.
17. Le Bourhis L, Guerri L, Dusseaux M, *et al.* Mucosal-associated invariant T cells: unconventional development and function. *Trends Immunol* 2011; **32**: 212–218.
18. Walker LJ, Kang YH, Smith MO, *et al.* Human MAIT and CD8 $\alpha$ alpha cells develop from a pool of type-17 precommitted CD8 $^{+}$  T cells. *Blood* 2012; **119**: 422–433.
19. Gherardin NA, Souter MNT, Koay HF, *et al.* Human blood MAIT cell subsets defined using MR1 tetramers. *Immunol Cell Biol* 2018; **96**: 507–525.
20. Kawachi I, Maldonado J, Strader C, *et al.* MR1-restricted V alpha 19i mucosal-associated invariant T cells are innate T cells in the gut lamina propria that provide a rapid and diverse cytokine response. *J Immunol* 2006; **176**: 1618–1627.
21. Kjer-Nielsen L, Patel O, Corbett AJ, *et al.* MR1 presents microbial vitamin B metabolites to MAIT cells. *Nature* 2012; **491**: 717–723.
22. Corbett AJ, Eckle SB, Birkinshaw RW, *et al.* T-cell activation by transitory neo-antigens derived from distinct microbial pathways. *Nature* 2014; **509**: 361–365.
23. Kjer-Nielsen L, Corbett AJ, Chen Z, *et al.* An overview on the identification of MAIT cell antigens. *Immunol Cell Biol* 2018; **96**: 573–587.
24. Koay HF, Gherardin NA, Enders A, *et al.* A three-stage intrathymic development pathway for the mucosal-associated invariant T cell lineage. *Nat Immunol* 2016; **17**: 1300–1311.
25. Ben Youssef G, Tourret M, Salou M, *et al.* Ontogeny of human mucosal-associated invariant T cells and related T cell subsets. *J Exp Med* 2018; **215**: 459–479.
26. Riegert P, Wanner V, Bahram S. Genomics, isoforms, expression, and phylogeny of the MHC class I-related MR1 gene. *J Immunol* 1998; **161**: 4066–4077.
27. Chua WJ, Kim S, Myers N, *et al.* Endogenous MHC-related protein 1 is transiently expressed on the plasma membrane in a conformation that activates mucosal-associated invariant T cells. *J Immunol* 2011; **186**: 4744–4750.
28. Tsukamoto K, Deakin JE, Graves JA, *et al.* Exceptionally high conservation of the MHC class I-related gene, MR1, among mammals. *Immunogenetics* 2013; **65**: 115–124.
29. Le Bourhis L, Martin E, Peguillet I, *et al.* Antimicrobial activity of mucosal-associated invariant T cells. *Nat Immunol* 2010; **11**: 701–708.
30. Gold MC, Cerri S, Smyk-Pearson S, *et al.* Human mucosal associated invariant T cells detect bacterially infected cells. *PLoS Biol* 2010; **8**: e1000407.
31. Meierovics A, Yankelevich WJ, Cowley SC. MAIT cells are critical for optimal mucosal immune responses during *in vivo* pulmonary bacterial infection. *Proc Natl Acad Sci USA* 2013; **110**: E3119–E3128.
32. Chen Z, Wang H, D'Souza C, *et al.* Mucosal-associated invariant T-cell activation and accumulation after *in vivo* infection depends on microbial riboflavin synthesis and co-stimulatory signals. *Mucosal Immunol* 2017; **10**: 58–68.
33. Ussher JE, Willberg CB, Klenerman P. MAIT cells and viruses. *Immunol Cell Biol* 2018; **96**: 630–641.
34. Meermeier EW, Harriff MJ, Karamooz E, Lewinsohn DM. MAIT cells and microbial immunity. *Immunol Cell Biol* 2018; **96**: 607–617.
35. Novak J, Dobrovolny J, Novakova L, *et al.* The decrease in number and change in phenotype of mucosal-associated invariant T cells in the elderly and differences in men and women of reproductive age. *Scand J Immunol* 2014; **80**: 271–275.

36. Cosgrove C, Ussher JE, Rauch A, *et al.* Early and nonreversible decrease of CD161 + /MAIT cells in HIV infection. *Blood* 2013; **121**: 951–961.
37. Leeansyah E, Ganesh A, Quigley MF, *et al.* Activation, exhaustion, and persistent decline of the antimicrobial MR1-restricted MAIT-cell population in chronic HIV-1 infection. *Blood* 2013; **121**: 1124–1135.
38. Fernandez CS, Amarasena T, Kelleher AD, *et al.* MAIT cells are depleted early but retain functional cytokine expression in HIV infection. *Immunol Cell Biol* 2015; **93**: 177–188.
39. Ussher JE, Phalora P, Cosgrove C, *et al.* Molecular analyses define Valpha7.2-Jalpha33 + MAIT cell depletion in HIV infection: a case-control study. *Medicine (Baltimore)* 2015; **94**: e1134.
40. Seach N, Guerri L, Le Bourhis L, *et al.* Double-positive thymocytes select mucosal-associated invariant T cells. *J Immunol* 2013; **191**: 6002–6009.
41. Eckle SB, Corbett AJ, Keller AN, *et al.* Recognition of vitamin B precursors and byproducts by mucosal associated invariant T cells. *J Biol Chem* 2015; **290**: 30204–30211.
42. Bendelac A. Positive selection of mouse NK1 + T cells by CD1-expressing cortical thymocytes. *J Exp Med* 1995; **182**: 2091–2096.
43. Pellicci DG, Uldrich AP, Kyparissoudis K, *et al.* Intrathymic NKT cell development is blocked by the presence of alpha-galactosylceramide. *Eur J Immunol* 2003; **33**: 1816–1823.
44. Chun T, Page MJ, Gapin L, *et al.* CD1d-expressing dendritic cells but not thymic epithelial cells can mediate negative selection of NKT cells. *J Exp Med* 2003; **197**: 907–918.
45. Cui Y, Franciszkiewicz K, Mburu YK, *et al.* Mucosal-associated invariant T cell-rich congenic mouse strain allows functional evaluation. *J Clin Invest* 2015; **125**: 4171–4185.
46. Savage AK, Constantinides MG, Han J, *et al.* The transcription factor PLZF directs the effector program of the NKT cell lineage. *Immunity* 2008; **29**: 391–403.
47. Kovalovsky D, Uche OU, Eladad S, *et al.* The BTB-zinc finger transcriptional regulator PLZF controls the development of invariant natural killer T cell effector functions. *Nat Immunol* 2008; **9**: 1055–1064.
48. Constantinides MG, Gudjonson H, McDonald BD, *et al.* PLZF expression maps the early stages of ILC1 lineage development. *Proc Natl Acad Sci USA* 2015; **112**: 5123–5128.
49. Constantinides MG, McDonald BD, Verhoef PA, *et al.* A committed precursor to innate lymphoid cells. *Nature* 2014; **508**: 397–401.
50. Kreslavsky T, Savage AK, Hobbs R, *et al.* TCR-inducible PLZF transcription factor required for innate phenotype of a subset of gammadelta T cells with restricted TCR diversity. *Proc Natl Acad Sci USA* 2009; **106**: 12453–12458.
51. Lu Y, Cao X, Zhang X, *et al.* PLZF controls the development of fetal-derived IL-17 + Vgamma6 + gammadelta T cells. *J Immunol* 2015; **195**: 4273–4281.
52. Leeansyah E, Loh L, Nixon DF, *et al.* Acquisition of innate-like microbial reactivity in mucosal tissues during human fetal MAIT-cell development. *Nat Commun* 2014; **5**: 3143.
53. Gold MC, Eid T, Smyk-Pearson S, *et al.* Human thymic MR1-restricted MAIT cells are innate pathogen-reactive effectors that adapt following thymic egress. *Mucosal Immunol* 2013; **6**: 35–44.
54. Fedeli M, Napolitano A, Wong MP, *et al.* Dicer-dependent microRNA pathway controls invariant NKT cell development. *J Immunol* 2009; **183**: 2506–2512.
55. Zheng Q, Zhou L, Mi QS. MicroRNA miR-150 is involved in Valpha14 invariant NKT cell development and function. *J Immunol* 2012; **188**: 2118–2126.
56. Henao-Mejia J, Williams A, Goff LA, *et al.* The microRNA miR-181 is a critical cellular metabolic rheostat essential for NKT cell ontogenesis and lymphocyte development and homeostasis. *Immunity* 2013; **38**: 984–997.
57. Fedeli M, Riba M, Garcia Manteiga JM, *et al.* miR-17 approximately 92 family clusters control iNKT cell ontogenesis via modulation of TGF-beta signaling. *Proc Natl Acad Sci USA* 2016; **113**: E8286–E8295.
58. Pobezinsky LA, Etzensperger R, Jeurling S, *et al.* Let-7 microRNAs target the lineage-specific transcription factor PLZF to regulate terminal NKT cell differentiation and effector function. *Nat Immunol* 2015; **16**: 517–524.
59. Das R, Sant'Angelo DB, Nichols KE. Transcriptional control of invariant NKT cell development. *Immunol Rev* 2010; **238**: 195–215.
60. Guo J, Hawwari A, Li H, *et al.* Regulation of the TCRalpha repertoire by the survival window of CD4(+) CD8(+) thymocytes. *Nat Immunol* 2002; **3**: 469–476.
61. Monticelli LA, Yang Y, Knell J, *et al.* Transcriptional regulator Id2 controls survival of hepatic NKT cells. *Proc Natl Acad Sci USA* 2009; **106**: 19461–19466.
62. D'Cruz LM, Knell J, Fujimoto JK, *et al.* An essential role for the transcription factor HEB in thymocyte survival, Tcr rearrangement and the development of natural killer T cells. *Nat Immunol* 2010; **11**: 240–249.
63. D'Cruz LM, Stradner MH, Yang CY, *et al.* E and Id proteins influence invariant NKT cell sublineage differentiation and proliferation. *J Immunol* 2014; **192**: 2227–2236.
64. Verykokakis M, Krishnamoorthy V, Iavarone A, *et al.* Essential functions for ID proteins at multiple checkpoints in invariant NKT cell development. *J Immunol* 2013; **191**: 5973–5983.
65. Teh CE, Lalaoui N, Jain R, *et al.* Linear ubiquitin chain assembly complex coordinates late thymic T-cell differentiation and regulatory T-cell homeostasis. *Nat Commun* 2016; **7**: 13353.
66. Griewank K, Borowski C, Rietdijk S, *et al.* Homotypic interactions mediated by Slamf1 and Slamf6 receptors control NKT cell lineage development. *Immunity* 2007; **27**: 751–762.
67. De Calisto J, Wang N, Wang G, *et al.* SAP-dependent and -independent regulation of innate T cell development involving SLAMF receptors. *Front Immunol* 2014; **5**: 186.
68. Nichols KE, Hom J, Gong SY, *et al.* Regulation of NKT cell development by SAP, the protein defective in XLP. *Nat Med* 2005; **11**: 340–345.
69. Pasquier B, Yin L, Fondaneche MC, *et al.* Defective NKT cell development in mice and humans lacking the adapter SAP, the X-linked lymphoproliferative syndrome gene product. *J Exp Med* 2005; **201**: 695–701.



70. Lee YJ, Holzapfel KL, Zhu J, *et al.* Steady-state production of IL-4 modulates immunity in mouse strains and is determined by lineage diversity of iNKT cells. *Nat Immunol* 2013; **14**: 1146–1154.
71. Leeansyah E, Svard J, Dias J, *et al.* Arming of MAIT cell cytolytic antimicrobial activity is induced by IL-7 and defective in HIV-1 infection. *PLoS Pathog* 2015; **11**: e1005072.
72. Dias J, Sobkowiak MJ, Sandberg JK, *et al.* Human MAIT-cell responses to *Escherichia coli*: activation, cytokine production, proliferation, and cytotoxicity. *J Leukoc Biol* 2016; **100**: 233–240.
73. Dias J, Leeansyah E, Sandberg JK. Multiple layers of heterogeneity and subset diversity in human MAIT cell responses to distinct microorganisms and to innate cytokines. *Proc Natl Acad Sci USA* 2017; **114**: E5434–E5443.
74. Rouxel O, Lehuen A. Mucosal-associated invariant T cells in autoimmune and immune-mediated diseases. *Immunol Cell Biol* 2018; **96**: 618–629.
75. Salio M, Silk JD, Yvonne Jones E, *et al.* Biology of CD1- and MR1-restricted T cells. *Annu Rev Immunol* 2014; **32**: 323–366.
76. Wu L, Van Kaer L. Natural killer T cells and autoimmune disease. *Curr Mol Med* 2009; **9**: 4–14.
77. Martin CE, Spasova DS, Frimpong-Boateng K, *et al.* Interleukin-7 availability is maintained by a hematopoietic cytokine sink comprising innate lymphoid cells and T cells. *Immunity* 2017; **47**: 171–182 e4.
78. Webster KE, Kim HO, Kyprisoudis K, *et al.* IL-17-producing NKT cells depend exclusively on IL-7 for homeostasis and survival. *Mucosal Immunol* 2014; **7**: 1058–1067.
79. Lepore M, Kalinichenko A, Colone A, *et al.* Parallel T-cell clonal and deep sequencing of human MAIT cells reveal stable oligoclonal TCRbeta repertoire. *Nat Commun* 2014; **5**: 3866.
80. Walker LJ, Tharmalingam H, Klenerman P. The rise and fall of MAIT cells with age. *Scand J Immunol* 2014; **80**: 462–463.
81. Montecino-Rodriguez E, Berent-Maoz B, Dorshkind K. Causes, consequences, and reversal of immune system aging. *J Clin Invest* 2013; **123**: 958–965.
82. Boraschi D, Aguado MT, Dutel C, *et al.* The gracefully aging immune system. *Sci Transl Med* 2013; **5**: 185 ps8.

© 2018 The Authors

*Immunology & Cell Biology* published by John Wiley & Sons Australia, Ltd on behalf of Australasian Society for Immunology Inc.

This is an open access article under the terms of the Creative Commons Attribution License, which permits use, distribution and reproduction in any medium, provided the original work is properly cited.