

THE FREQUENCY OF EGFR AND KRAS MUTATIONS IN THE TURKISH POPULATION WITH NON-SMALL CELL LUNG CANCER AND THEIR RESPONSE TO ERLOTINIB THERAPY

Demiray A^{1,#}, Yaren A², Karagenç N¹, Bir F³, Demiray AG², Karagür ER¹, Tokgün O¹, Elmas L¹, Akça H^{1,*}

#<https://orcid.org/0000-0002-3343-0184>.

*Corresponding Author: Professor Dr. Hakan Akça, Cancer Research Center, Pamukkale University, 11 University Street, Denizli Turkey. E-mail: hakca@pau.edu.tr (primary), hakanakca@yahoo.com

ABSTRACT

In this study, profiles of epidermal growth factor receptor (EGFR) and Kirsten ras sarcoma (KRAS) mutations and response to erlotinib therapy have been investigated in patients with non-small cell lung cancer (NSCLC). DNA from 300 patients with NSCLC was extracted from parafin-embedded tissues. After the extracted DNA was sequenced by pyrosequencing method, a total of 97 (32.0%) patients out of 300 were detected to carry an EGFR mutation and 75 (25.0%) patients out of 300 carried a KRAS mutation; 20 (6.6%) patients were detected to carry both of EGFR and KRAS mutations. The EGFR mutations were found to be statistically significant in female patients (48.0 women vs. 28.0% men, non smokers (49.0 vs. 26.0%) and adenocarcinoma (37.8 vs. squamous 26.8%). The overall rate of survival in patients receiving erlotinib therapy than in patients who did not. In patients without the KRAS mutation, the median overall survival rate was 161 ± 30 weeks with erlotinib therapy and 90 ± 13 weeks in patients without erlotinib therapy. In patients having KRAS mutation, the median overall survival was 98 ± 16 weeks with erlotinib therapy and 34 ± 16 weeks with no erlotinib therapy. In our study, we once again demonstrated that the presence of these mutations affected response to erlotinib therapy. The KRAS mutations negatively affected survival rate with and without erlotinib therapy.

Keywords: Erlotinib therapy; Epidermal growth factor receptor (EGFR); Kirsten ras sarcoma (KRAS); Non-small cell lung cancer (NSCLC).

INTRODUCTION

Lung cancer is one of the main leading causes of cancer death, and the most common cancer after prostate and breast cancers, in respect to prevalence [1]. The 5-year overall survival is 15.0% in patients with non-small cell lung cancer (NSCLC) [1]. Overall survival rates increase with surgical, chemotherapy and radiotherapy treatments in early stages of the cancer [2]. Recently, immunotherapy and molecular targeted therapy have been used to treat cancer patients. Erlotinib and gefitinib, which are the inhibitors of epidermal growth factor receptor (EGFR) tyrosine kinases are molecular targeted agents. These agents have been used to inhibit certain EGFR tyrosine kinase mutations. Both of them can pass through the phospholipid membrane into the cell, and these agents compete with adenosine triphosphate (ATP) to bind the ATP binding pocket of EGFR. The EGFR, a transmembrane glycoprotein of 170 kDa consisting 1186 amino acids, is localized in the 7q12 chromosome region. It is known that the EGFR receptor has mutations in the tyrosine kinase region of 18-21 exons in NSCLC cells and correlate therapy response. These EGFR mutations are more common in Asian, Caucasian and non smoking women [4]. K-ras, a downstream protein, becomes constantly active as a result of EGFR auto-phosphorylation. The Kirsten ras sarcoma (KRAS) gene belongs to *Ras* gene family and homolog of Kristen rat sarcoma viral oncogene [5-8]. It is localized at the chromosome 12 (12q12.1) region and consists of six exons transcribed as a small guanosine triphosphatase (GTPase) consists of 21k Da and 189 amino acids [5,7]. Codons 12 and 13 have GTPase-acting proteins (GTPs) binding site in the KRAS gene. Codon 61 is the switch II region that regulates Ras protein. Mutations at codons 12, 13 and 61 prevent GTP hydrolysis causing K-ras protein constantly active situation. Studies have shown that NSCLC patients

¹ Medical Biology Department, Pamukkale University, Denizli, Turkey

² Medical Oncology Department, Pamukkale University, Denizli, Turkey

³ Medical Pathology Department, Pamukkale University School of Medicine, Denizli, Turkey

with KRAS mutations have lower survival rates than those without KRAS mutations [6].

In our study, we investigated the frequency of EGFR and KRAS mutations and effects of anti-EGFR tyrosine kinase inhibitors treatment in Turkish NSCLC patients. This is the first large-scale study that investigates EGFR and KRAS mutations in 300 patients with NSCLC in Turkey.

MATERIALS AND METHODS

Patients. This study was performed in paraffin-embedded tissues of 300 NSCLC patients who attended the Medical Oncology Department, Pamukkale University, Denizli, Turkey, Medical Oncology Department, Antalya Education Research Hospital, Antalya, Turkey and the Medical Oncology Department, Afyon Kocatepe University, Afyon, Turkey, between 2011 and 2014. DNA was extracted from paraffin-embedded tissues using QIamp DNA FFPE Tissue kit (Qiagen GmbH, Hilden, Germany, its purity was checked spectrophotometrically and stored at -20 °C. Clinical features of patients are given in Table 1.

Pyrosequencing Method. The extracted DNA was sequenced by pyrosequencing, a method which gives effective with as little as 15 ng DNA. This method is based on a real time non electrophoretic system. Pyrosequencing is more cost-effective when compared to the dideoxy Sanger method. Pyrosequencing is more reliable and effective at determining EGFR mutations than the classic sequencing method [9]. Polymerase chain reaction (PCR) reaction composed of 20 pmol of each primer, 0.2 mmol each of deoxy-nucleotide triphosphates, 1.5 mmol/L MgCl₂ and 1.25 U of FastStart Taq DNA polymerase (Qiagen GmbH)

Table 1. Clinicopathological characteristics of the patients.

Characteristics	Patients (n = 300) (%)
Age:	
≤62 years	148 (49.3)
≥62 years	152 (50.7)
Gender:	
males	238 (50.7)
females	62 (20.7)
Smoking habit:	
smoker	233 (74.3)
never smoked	77 (25.7)
Histological type:	
adenocarcinoma	228 (76.0)
squamous	62 (20.7)
other	10 (3.3)
Stage:	
early (I; II; IIIA)	70 (23.3)
advanced (IIIB; IV)	230 (76.7)

as total final volume of 50 µL. The PCR method consisted of an initial denaturation step at 95 °C for 15 min., followed by 42 cycles at 95 °C for 20 seconds, 54 °C for 30 seconds, 72 °C for 20 seconds, and a final extension step at 72 °C for 5 min. The PCR products (10 µL) were analyzed by electrophoresis on a 3.0% agarose gel to confirm successful amplification.

After validation of the PCR products on the gel, 40 µL of the products were bound to streptavidin Sepharose HP (GE Healthcare, Waukesha, WI, USA), purified, washed, and denatured using a 0.2 mol/L sodium hydroxide solution, and washed again. Subsequently, 0.3 µmol/L pyrosequencing primers were annealed to the purified single-stranded PCR products, and the pyrosequencing was performed on a PyroMark ID system (Qiagen GmbH), ac-

Table 2. Detailed clinicopathological characteristics of patients with EGFR and KRAS mutations.

Characteristics	Patients (n=300)	EGFR Mutations (32.33%)		KRAS Mutations (25.0%)		EGFR and KRAS Mutations (6.6%)	
		[+] (n=97)	[-] (n=203)	[+] (n=75)	[-] (n=225)	[+] (n=20)	[-] (n=280)
Age:							
≤62 years	148	50 (32.9%)	102 (67.1%)	32 (21.1%)	120 (78.9%)	7 (4.6%)	145 (95.4%)
≥62 years	152	47 (31.8%)	101 (68.2%)	43 (29.1%)	105 (70.9%)	13 (8.8%)	135 (91.2%)
Gender:							
males	238	67 (28.2%)	171 (71.8%)	63 (26.5%)	174 (73.5%)	16 (6.7%)	222 (93.3%)
females	62	30 (48.3%) ^a	32 (51.7%)	12 (19.4%)	50 (80.6%)	4 (6.5%)	58 (93.5%)
Smoking habit:							
smoker	233	59 (26.5%)	164 (73.5%)	58 (26.0%)	165 (74.0%)	11 (4.9%)	212 (88.4%)
never smoked	77	38 (49.4%) ^a	39 (50.6%)	17 (22.0%)	60 (78.0%)	9 (11.6)	68 (88.4%)
Histological type:							
adenocarcinoma	228	77 (33.7%) ^a	151 (66.3%)	55 (24.1%)	173 (75.9%)	16 (7.0%)	212 (93.0%)
squamous	62	13 (21.0%)	49 (79.0%)	18 (29.0%)	44 (71.0%)	2 (3.2%)	60 (96.8%)
other	10	7 (70.0%)	3 (30.0%)	2 (20.0%)	8 (80.0%)	2 (20.0%)	8 (80.0%)
Stage:							
early (I; II; IIIA)	70	18 (25.7%)	52 (74.3%)	16 (22.8%)	54 (77.2%)	2 (2.8%)	68 (97.2%)
advanced (IIIB; IV)	230	79 (34.3%)	151 (65.7%)	59 (25.6%)	171 (74.4%)	18 (7.8%)	212 (92.2%)

^a Found to be statistically significant.

according to the manufacturer's instructions and analyzed in the AQ mode of the PyroMark (Qiagen GmbH) software.

Statistical Analyses. All statistical analyses were done using the Statistical Package for the Social Sciences (SPSS) version 17.0 (SPSS® IBM Corporation, Armonk, NY, USA). For descriptive analyses, the χ^2 and *t*-tests were performed. Progression-free survival and overall survival analyses, according to EGFR and KRAS mutations' status were done using the Kaplan Meier Method and estimating the survival difference with the use of long rank test. A value of *p* <0.05 was accepted to be statistically significant.

RESULTS

Patient Profiles. We conducted this study on paraffin-embedded tissues of 300 consecutive patients with NSCLC from January 2010 through January 2014. In the 300 patients with NSCLC, 230 (76.7%) patients had ad-

vanced disease, 62 (20.7%) of these patients were female, 238 (79.3%) were male. Histopathologically, there were 62 squamous and 228 adenocarcinoma NSCLC patients. The median age of the patients was 62 (range 37-82), 233 (74.3%) had a history of smoking. The patient characteristics are summarized in Table 1.

EGFR Mutations Profiles. We detected EGFR mutations in 97 patients out of 300 patients, 30 of which were female and 67 were male patients. Histopathologically, 13 were squamous type 77 adenocarcinoma, while seven were in other subtypes. In terms of age, 50 patients were over 62 years old, 47 patients were less than 62, and 59 of them are smokers. The EGFR mutations were found to be statistically significant in females, non smokers and adenocarcinoma patients. Eighteen patients were in early stages (I-IIIa), while 79 patients were in advanced stages (IIIB-IV), considering progression [9] (Table 2). We detected 53.5% EGFR mutations in exon 19 [Table 3(A)].

Table 3. (A) Types of EGFR mutations in Turkish NSCLC patients.

Mutation	Exon	Nucleotide Number	Amino Acid Changes	Mutation
Point mutation	18	2155 (G>T)	G719C	1 (0.8%)
Point mutation	18	2134 (G>A)	G719S	3 (2.5%)
Point mutation	18	2155 (G>A)	G719A	9 (7.6%)
Deletion	19	235-2249del (GGA ATT AAG AGA AGC)	delE746-A750	39 (33.4%)
Del/Ins	19	2235-2252del (GGA ATT AAG AGA AGC insCA)	L747-6751insP	10 (8.5%)
Del/Ins	19	2235-2252del (GGA ATT AAG AGA AGC insAAT)	delE746-T751insI	5 (4.2%)
Del/Ins	19	2235-2258del (GGA ATT AAG AGA AGC insAAT CCA)	delE746-A750insIP	1 (0.8%)
Del/Ins	19	2235-2249del (GGA ATT AAG AGA AGC insAGA)	delL747-P753insS	3 (2.5%)
Del/Ins	19	2235-2258del (GGA ATT AAG AGA AGC insAAT)	delE746-A750insI	3 (2.5%)
Del/Ins	19	2235-2258del (GGA ATT AAG AGA AGC insCCA)	delA746-A750insP	1 (0.8%)
Del/Ins	19	2235-2258del (GGA AAT AAG AGA AGC insCAA)	delL747-T751insQ	1 (0.8%)
Point mutation	20	2369 (C>T)	T790M	3 (2.5%)
Point mutation	21	2573 (T>G)	L858R	10 (8.5%)
Point mutation	21	2582 (T>A)	L861Q	29 (24.6%)

Del/Ins: deletions and insertions.

Table 3. (B) Types of KRAS mutations in Turkish NSCLC patients.

Mutation Types	Codon	Nucleotide Number	Amino Acid Changes	Mutations
Point mutation	12	34 (G>A)	G12S	10 (12.7%)
Point mutation	12	34 (G>T)	G12C	8 (10.1%)
Point mutation	12	35 (G>A)	G12D	6 (6.7%)
Point mutation	12	35 (G>T)	G12V	20 (25.2%)
Point mutation	12	35 (G>A)	G12A	1 (1.3%)
Point mutation	13	37 (G>A)	G13D	1 (1.3%)
Point mutation	61	182 (A>G)	Q61R	18 (22.8%)
Point mutation	61	183 (A>C)	Q61H	15 (19.0%)

KRAS Mutation Profiles. Seventy-five of 300 patients have KRAS mutations, 12 of which were females, 63 were males. Histopathologically, 18 patients have squamous type NSCLC, while 55 have adenocarcinoma and two were in other subtypes. Thirty-two patients were older than 62 and 58 patients were smokers. Sixteen patients were in early stages and 59 patients were in advanced stages of cancer (Table 2). We found no statistically significant differences between KRAS mutations and age, gender, smoking, stage of the cancer.

We detected both EGFR-KRAS mutations in 20 patients, four females and 16 male patients. Histopathologically, two of them were squamous, 16 were adenocarcinoma and two were in other types. Two were in early stage, 18 were in advanced stages, 13 of them were older than 62. Eleven of them are smokers, while nine are not. Detailed information is given in Table 2.

Survival Rates of Patients with EGFR-KRAS Mutations. Fifty-nine patients who had either EGFR mutations or both EGFR and KRAS mutations, received

erlotinib therapy. We showed that survival rates of patients who received EGFR-TKI therapy was significantly higher than patients with EGFR mutations who did not receive erlotinib therapy [Figure 1(A) and 1(B)].

Twenty patients who have EGFR-KRAS mutations and were not treated with erlotinib, had the lowest survival rate (34 ± 16 weeks) (p 0.0007) [Figure 2(B)]. Patients with both mutations and who received erlotinib therapy, had a survival rate of 98 ± 16 weeks [Figure 2(B)]. Patients who had only the EGFR mutation and were treated with erlotinib, had a survival rate of 161 ± 30 weeks [Figure 2(A)], and those who did not receive erlotinib therapy, had a survival rate of 90 ± 13 weeks [Figure 2(A)].

The overall survival rate patients treated with EGFR-TKI without progression was also found to be significantly higher. Patients who were treated with EGFR-TKI: 288 ± 11 and those who were not: 119 ± 11 weeks (p 0.004) [Figure 1(A)]. Overall survival rates were 126 ± 11 in patients with EGFR mutations and 121 ± 9 weeks in other patients (p 0.266) [Figure 1(B)]. We observed, that patients who

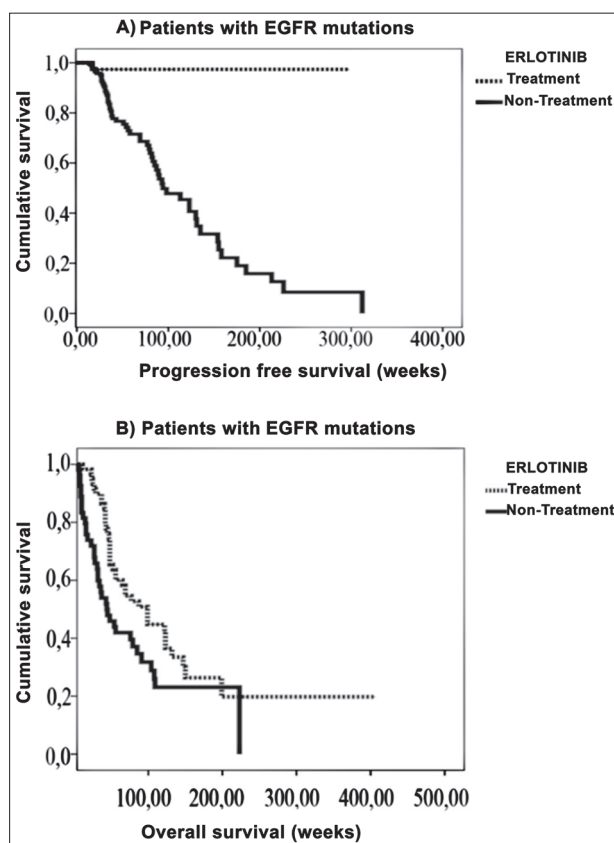


Figure 1. (A) The progression-free survival rate was statistically significantly higher in patients carrying EGFR mutations receiving EGFR-TKI therapy in comparison to patients having no such treatment. (B) The overall survival rate was statistically significantly higher in patients carrying EGFR mutations receiving EGFR-TKI therapy in comparison to patients having no such treatment.

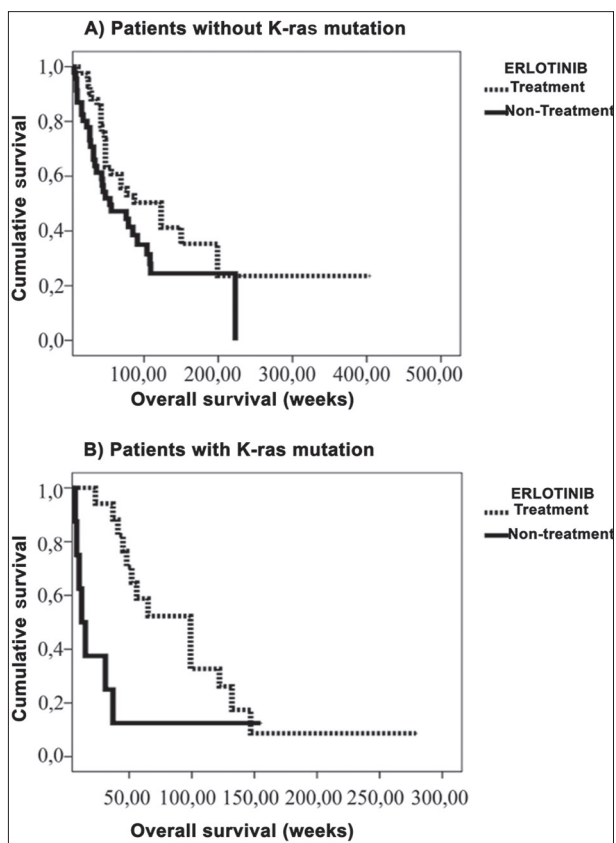


Figure 2. (A) The overall survival rate was statistically significantly higher in patients not carrying the KRAS mutations receiving EGFR-TKI therapy in comparison to patients having no such treatment. (B) The overall survival rate was statistically significantly higher in patients carrying the KRAS mutations receiving EGFR-TKI therapy in comparison to patients having no such treatment.

have both EGFR and KRAS mutations, have the lowest overall survival rate and erlotinib therapy increased the survival rate in patients who have both mutations, while progression-free survival rates in patients treated with erlotinib were 32 ± 5 weeks, these rates were 33 ± 3 weeks in patients who were not treated with erlotinib (p 0.755). KRAS mutation 100 ± 4 , without mutation 131 ± 11 weeks, p 0.038, and without a progression survival rate was not statistically significant (KRAS mutations 31 ± 5 , without KRAS mutation 33 ± 3 weeks, p 0.0807).

DISCUSSION

Non-small cell lung cancer has different subtypes, mainly adenocarcinoma, squamous and other subtypes. Of these, adenocarcinoma is seen more often in patients with NSCLC [10-13]. Previous studies that showed correlation can be found in literature regarding to the subtypes of NSCLC in the Turkish population [9,14]. In this study, we found 76.0% adenocarcinoma, 20.7% squamous, 3.3% other subtypes in 300 patients. The distribution of gender has been reported in the literature as: in East Asian communities 54.0-65.0% males, 35.0-46.0% females [10], in England 55.0% males, 45.0% females [1], in America 58.0% males 42.0% females [1]. Two previous studies performed in the Turkish population, found 85.0% males and 15.0% females by Unal *et al.* [14], 75.0% males and 25.0% females by Akca *et al.* [9]. Our results showed a similar gender distribution (Table 2). It has been reported that EGFR mutation rates range between 12.2 and 50.0% in East Asia communities [10,15]. Recently, population studies have shown that European and American population have the lowest EGFR mutation rates, 6.0-16.0% and 15.0-20.0%, respectively, in the world [11,12].

We detected EGFR mutations in 33.0% of all 300 patients and 84.0% of EGFR mutation-carrying patients had adenocarcinoma. Previous studies also showed similar results, 66.0 and 81.0% EGFR mutation rates, respectively [9,14]. In our study, we found EGFR mutations in 48.0% female patients and in 28.0% male patients. This result is similar to previous reports that female patients who had NSCLC have higher EGFR mutations [10-13]. Regarding smoking habits, patients who do not smoke have more EGFR mutations [9-15]. In our study, we detected EGFR mutations in 49.0% of non smoking patients and in 28.0% of the smoking patients (Table 2). In the literature, EGFR mutations are seen more often in non smokers and female Asian patients [10]. Mutation rate also increases with advanced stages of NSCLC cancer (IIIB-IV) [10-13]. In our study, similar results were obtained in 18.6% early stage and 81.4% advanced stage in NSCLC patients with EGFR mutations.

The KRAS mutation rates in NSCLC patients were reported as 2.3-9.4% in East Asian populations, 11.0-29.0% in North America, 12.0-31.0% in Europe, 25.0% in Mexico, 12.0% in Columbia and 12.0% in Peru [10-12]. In our research, we found 20.8% patients had KRAS mutations (Table 2). We detected 65.0% KRAS mutations in codons 12 and 13 and 35.0% in codon 64 [Table 3(B)].

We also found that 6.6% of the patients carry both EGFR and KRAS mutations (Table 2). In the literature, this rate varied between 1.0 and 15.0% [10-12]. This is the first study in the Turkish population showing KRAS mutations and erlotinib therapy in NSCLC patients.

Fifty-nine of 97 patients with EGFR mutations were treated with EGFR-TKI agent (erlotinib). The average overall survival rates are 146 ± 22 weeks in EGFR-TKI treated patients and 84 ± 12 weeks in untreated patients. Similar results were published in the literature that erlotinib therapy increases overall survival [16] [Figure 1(B)].

The effect of EGFR-TKI treatment on a patient's survival without progression was found to be statistically significant. Erlotinib-treated patients' survival rate was 288 ± 11 weeks and 119 ± 11 weeks in untreated patients. This result is in accordance with the literature [16]. EGFR-TKI treatment provided longer survival rates in patients carrying only EGFR mutations compared to the patients with both mutations [Figure 2(B)]. We report that the overall survival rates are 34 ± 16 weeks in patients with KRAS-EGFR mutations and 98 ± 16 weeks in EGFR mutations without KRAS mutations in erlotinib-treated patients. Thus, the longest overall survival rates were observed in patients with EGFR but without KRAS mutations, and the lowest overall survival rates were found in patient with EGFR and KRAS mutations in EGFR-TKI-treated patients. Therefore, this indicated that KRAS is a prognostic factor for NSCLC.

The mutations on the *KRAS* gene constantly activate K-ras protein, which in turn triggers cancer cell proliferation *via* the rapidly accelerated fibrosarcoma/mitogen-activated protein kinase kinase/extracellular signal regulated kinase (RAF/MEK/ERK) pathway, resulting in ERK transcriptional factor. Mutated K-ras also activates the phospho-inositide 3-kinase/phosphoinositide-dependent kinase/protein kinase B (PI3K/PDK/AKT) and tuberous sclerosis complex 1/Ras homologue enriched in brain/mammalian target of rapamycin complex 1 (TSC-1/RHEB/mTORC1) pathways, which have a role in invasion and metastasis in cancer cells [17]. Our research showed that additional KRAS mutations are a strong parameter for prognosis. The KRAS mutations negatively affect survival rate with and without erlotinib therapy [18]. This result suggests that KRAS mutation analyses should be routinely performed together with EGFR mutation analyses in NSCLC patients.

Declaration of Interest. The authors report no conflicts of interest. The authors alone are responsible for the content and writing of this article.

Funding. This study was partly supported by the Pamukkale University Scientific Foundation [#2012SBE002].

REFERENCES

1. Siegel R, DeSantis C, Virgo K, Stein K, Mariotto A, Smith T, *et al.* Cancer treatment and survivorship statistics, 2012. *CA Cancer J Clin.* 2012; 62(4): 220-241.
2. Ohashi R, Takahashi F, Cui R, Yoshioka M, Gu T, Sasaki S, *et al.* Interaction between CD44 and hyaluronate induces chemoresistance in non-small cell lung cancer. *Cancer Lett.* 2007; 252(2): 225-234.
3. Miller VA. EGFR mutations and EGFR tyrosine kinase inhibition in non-small cell lung cancer. *Semin Oncol Nurs.* 2008; 24(1): 27-33.
4. Soria JC, Mok TS, Cappuzzo F, Jänne PA. EGFR-mutated oncogene-addicted non-small cell lung cancer: Current trends and future prospects. *Cancer Treat Rev.* 2012; 38(5): 416-430.
5. Cox DA, Der JC. Ras history: Small GTPases. 2010; 1(1): 2-27.
6. Adjei A. Blocking oncogenic ras signaling for cancer therapy. *J Natl Cancer Inst.* 2001; 93(14): 1062-1074.
7. Monticone M, Biollo E, Maffei M, Donadini A, Romeo F, Storlazzi CT, *et al.* Gene expression deregulation by KRAS G12D and G12V in a BRAF V600E context. *Mol Cancer.* 2008; 7(1): 92-104.
8. Wicki A, Herrmann R, Christofori G. Kras in metastatic colorectal cancer. *Swiss Med Wkly.* 2010; 140(1): 13112-13119.
9. Akca H, Demiray A, Yaren A, Bir F, Koseler A, Iwakawa R, *et al.* Utility of serum DNA and pyrosequencing for the detection of EGFR mutations in non-small cell lung cancer. *Cancer Genet.* 2013; 206(6): 73-80.
10. Chang ET, Shema SJ, Wakelee HA, Clarke CA, Gomez SL. Uncovering disparities in survival after non-small cell lung cancer among Asian/Pacific Islander ethnic populations in California. *Cancer Epidemiol Biomarkers Prev.* 2009; 18(8): 2248-2255.
11. Arrieta O, Cardona AF, Martín C, López L, Rodríguez L, Bramuglia G. Updated frequency of EGFR and KRAS mutations in non-small cell lung cancer (NSCLC) in Latin America: The Latin-American Consortium for the Investigation of Lung Cancer (CLICaP). *J Thorac Oncol.* 2015; 10(5): 838-843.
12. Smits AJJ, Kummer JA, Hinrichs JWJ, Herder GJM, Scheidel-Jacobse KC, Jiwa NM. EGFR and KRAS mutations in lung carcinomas in the Dutch population: increased EGFR mutation frequency in malignant pleural effusion of lung adenocarcinoma. *Cell Oncol.* 2012; 35(3): 189-196.
13. Ciećkiewicz S, Olszewski WT, Tysarowski A, Kowalski DM, Głogowski M, Krzakowski M, *et al.* EGFR mutation testing on cytological and histological samples in non-small cell lung cancer: A Polish, single institution study and systematic review of European incidence. *Int J Clin Exp Pathol.* 2013; 6(12): 2800-2812.
14. Unal OU, Oztop I, Calibasi G, Baskin Y, Koca D, Demir N. Relationship between epidermal growth factor receptor gene mutations and clinicopathological features in patients with non-small cell lung cancer in Western Turkey. *Asian Pacific J Cancer Prev.* 2013; 14(6): 3705-3709.
15. Yatabe Y, Kerr KM, Utomo A, Rajadurai P, Tran VK, Du X, *et al.* EGFR mutation testing practices within the Asia Pacific Region. *J Thorac Oncol.* 2015; 10(3): 438-445.
16. Melosky B. Review of EGFR TKIs in metastatic NSCLC, including ongoing trials. *Front Oncol.* 2014; 4: 244.
17. Shigematsu H, Lin L, Takahashi T, Nomura M, Suzuki M, Wistuba II, *et al.* Clinical and biological features associated with epidermal growth factor receptor gene mutations in lung cancers. *J Natl Cancer Inst.* 2005; 97(5): 339-346.
18. Eberhard DA, Johnson BE, Amler LC, Goddard AD, Heldens SL, Herbst RS, *et al.* Mutations in the epidermal growth factor receptor and in KRAS are predictive and prognostic indicators in patients with non-small-cell lung cancer treated with chemotherapy alone and in combination with erlotinib. *J Clin Oncol.* 2005; 23(25): 5900-5909.