

A Presentation of Twiddler's Syndrome with Underlying Ratchet Mechanism

Hassaan Iftikhar ¹, Maryam Saleem ², Muhammad Nadeem ³, John Caplan ⁴, Anand Kaji ⁵

1. Internal Medicine, Seton Hall University-St. Francis Medical Center, Trenton, NJ, USA 2. Internal Medicine, Waterbury Hospital, Waterbury, USA 3. Internal Medicine, Seton Hall University-Hackensack Meridian School of Medicine - St Francis Program, Trenton, USA 4. Cardiology, St Francis Medical Center, Trenton, USA 5. Internal Medicine, St Francis Medical, Trenton, USA

✉ **Corresponding author:** Hassaan Iftikhar, hassaan213@gmail.com

Disclosures can be found in Additional Information at the end of the article

Abstract

Twiddler's syndrome, reel syndrome, and ratchet phenomenon are rare causes of pacemaker lead displacement. The presentation of Twiddler's syndrome with underlying ratchet mechanism is quite rarely reported in literature. In this case report we present a 63-year-old male with a history of non-ischemic cardiomyopathy who had his biventricular implantable cardioverter defibrillator leads dislodged and presented as sub-acute exacerbation of heart failure. This case highlights the underlying mechanism of twiddler's syndrome, its clinical presentation, management, and prevention.

Categories: Cardiac/Thoracic/Vascular Surgery, Cardiology, Internal Medicine

Keywords: twiddler syndrome, reel syndrome, ratchet syndrome, pacemaker, lead dislodgement, aicd

Introduction

Twiddler' syndrome, reel syndrome, and ratchet syndrome are rare yet dangerous phenomena of pacemaker lead dislodgement. Twiddler's syndrome was first reported by Bayliss [1]. In this case report, we describe an interesting case of pacemaker lead dislodgement by unconscious manipulation of the device pocket by a patient who presented eight months after device installation in a setting of sub-acute heart failure exacerbation.

Case Presentation

A 63-year-old male with a past medical history of non-ischemic cardiomyopathy (ejection fraction 10%-15%), hypertension, chronic kidney disease stage G3A, and severe mitral valve regurgitation status post valve repair initially presented for an upgradation of his biventricular pacemaker to biventricular implantable cardioverter defibrillator (BIV-ICD) and replacement of non-functional right atrial lead. The pacemaker pocket was exposed and identified and the atrial and ventricular leads were pulled back under fluoroscopic guidance. A new left coronary sinus lead was placed. Next, right atrial (RA) and right ventricular (RV) leads were placed and access was obtained via the left coronary sinus as the left subclavian vein was found to be occluded with formation of collaterals. The leads were sutured in fascial planes via silk suture. The pacing and sensing parameters were confirmed. BIV-ICD was placed in the pocket, and the pouch was closed via vicryl sutures. The patient had electrocardiogram (EKG) (Figure 1) and chest X-ray (Figure 2) performed after the procedure. He had developed small pneumothorax from the procedure, which resolved on its own.

Received 12/23/2018

Review began 01/22/2019

Review ended 02/08/2019

Published 02/13/2019

© Copyright 2019

Iftikhar et al. This is an open access article distributed under the terms of the Creative Commons Attribution License CC-BY 3.0., which permits unrestricted use, distribution, and reproduction in any medium, provided the original author and source are credited.

How to cite this article

Iftikhar H, Saleem M, Nadeem M, et al. (February 13, 2019) A Presentation of Twiddler's Syndrome with Underlying Ratchet Mechanism. Cureus 11(2): e4060. DOI 10.7759/cureus.4060

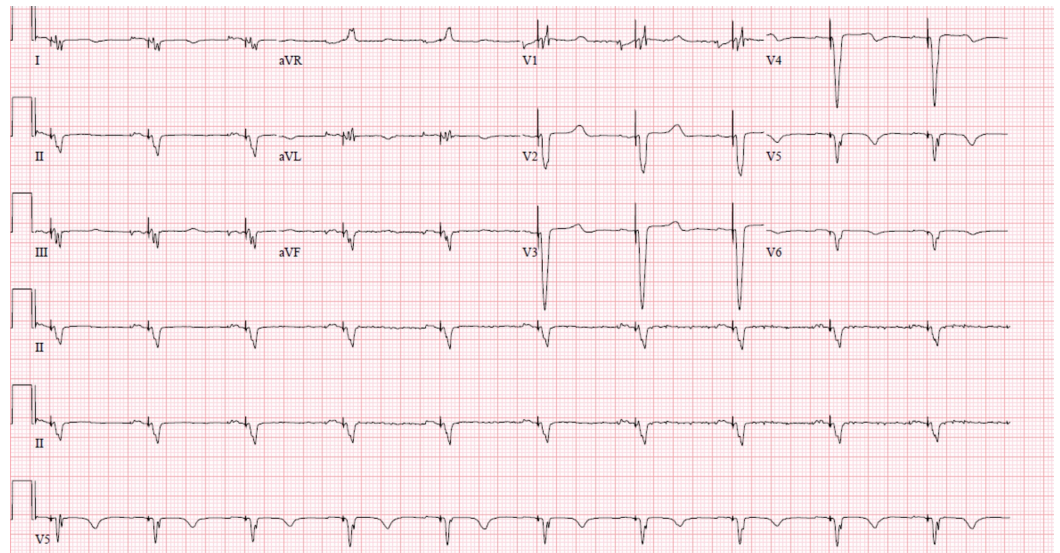


FIGURE 1: Biventricular pacing observed.

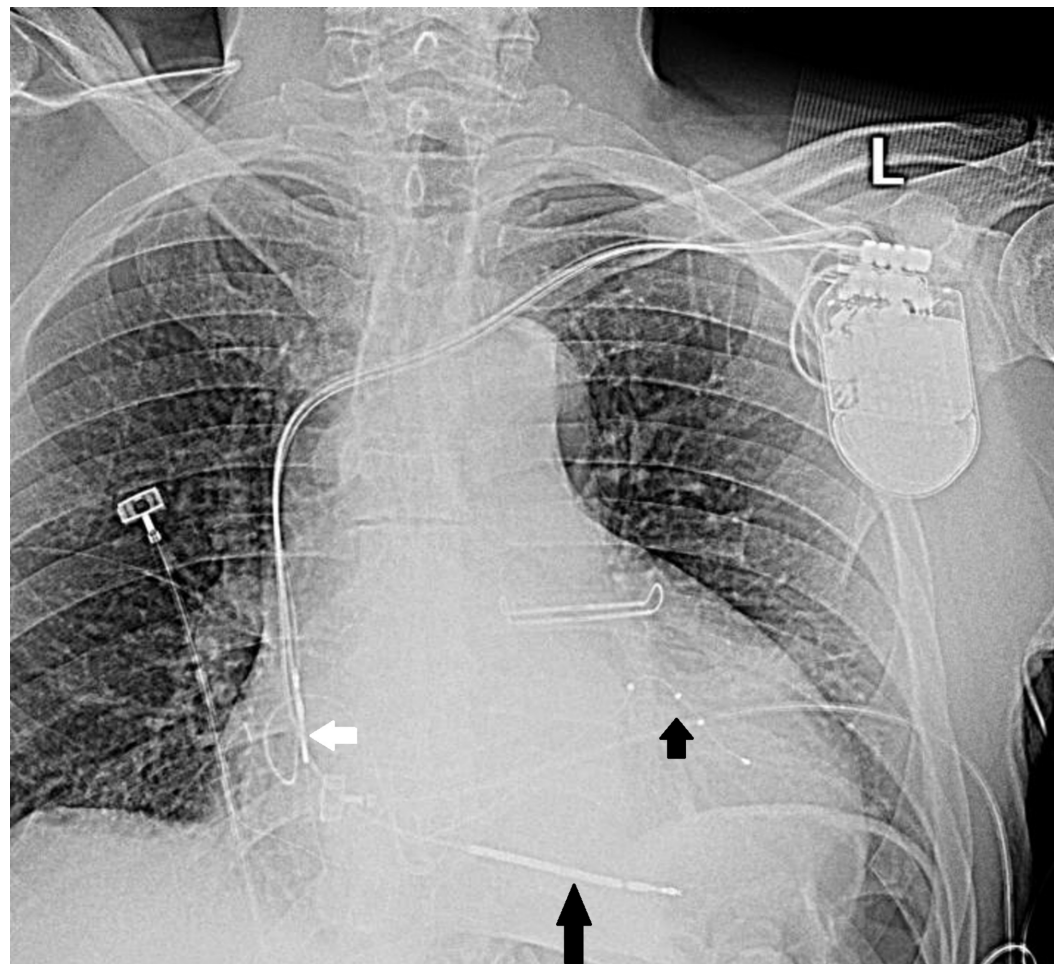


FIGURE 2: White arrow shows atrial lead, long black arrow points to defibrillator lead, and short black arrow shows left coronary sinus lead.

The patient was asymptomatic for the next seven months and then he developed increasing shortness of breath. At that point, the EKG (Figure 3) revealed loss of appropriate pacing function. It was discovered that the patient kept massaging his pacemaker pocket site in the last seven months but he denied manipulating the device itself. He had also been moving his arm up and down frequently, which would have led all his device leads to be pulled up towards the device in a ratchet-like fashion. The patient was scheduled again for revision of BIV-ICD and on incision of the generator pocket, the left ventricular lead was found coiled up in the pocket beside the generator (Figure 4). A new left ventricular lead was placed in the coronary sinus and then access was obtained via the right subclavian vein for right-sided leads. His right atrial and right ventricular leads were also found pulled up. A decision was made to place new right atrial and right ventricular leads. It is to be noted that all his device leads were undamaged and his device was found to be in the pocket in normal orientation. After securing the leads via sutures, the pacing and sensing function was analyzed. The pocket was revised and closed with vicryl sutures and the device was sewn to the pectoral fascia. A chest X-ray (Figure 5) and EKG (Figure 6) were obtained after the procedure to ensure the absence of pneumothorax and to document the appropriate functioning of the device, respectively.

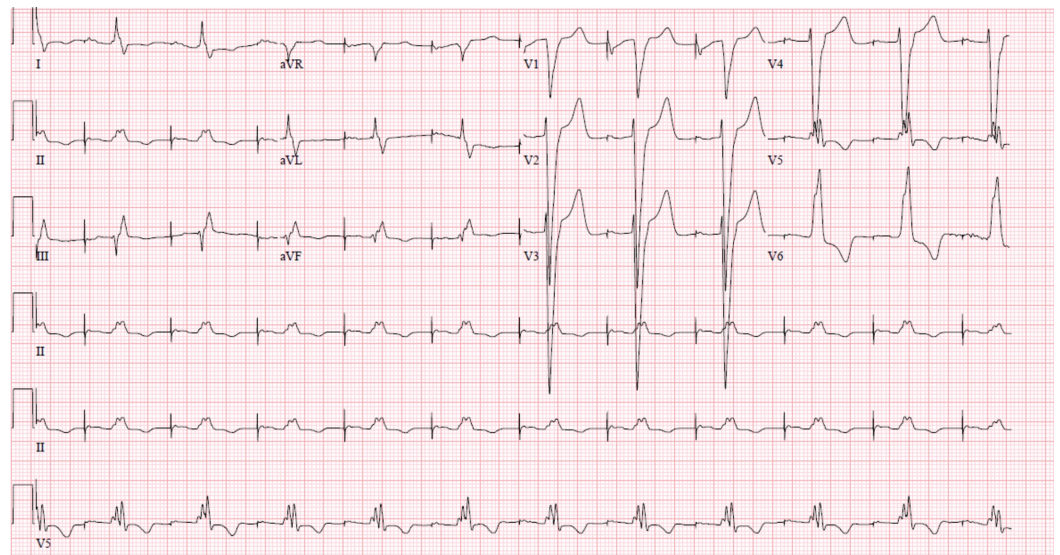


FIGURE 3: Atrial paced rhythm, loss of ventricular pacing.

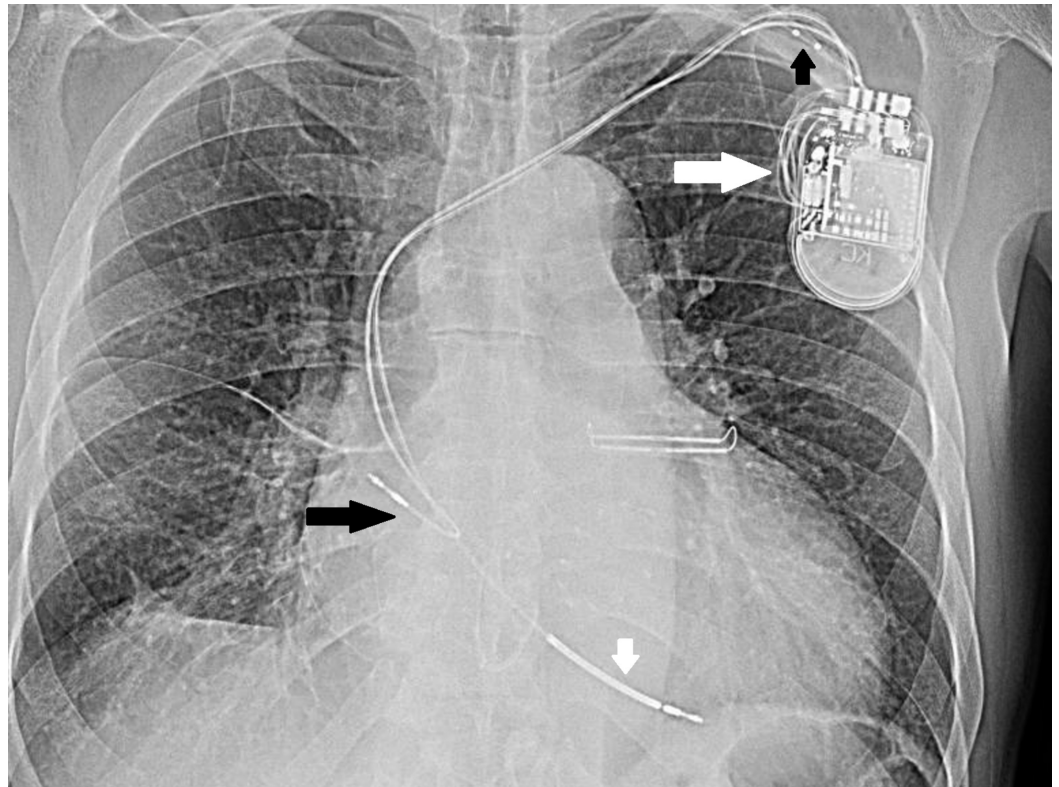


FIGURE 4: Long white arrow shows spool of wire near device not seen earlier. Small black arrow shows coiled up left coronary sinus lead, small white arrow points to pulled up RV lead, long black arrow shows pulled up RA lead.

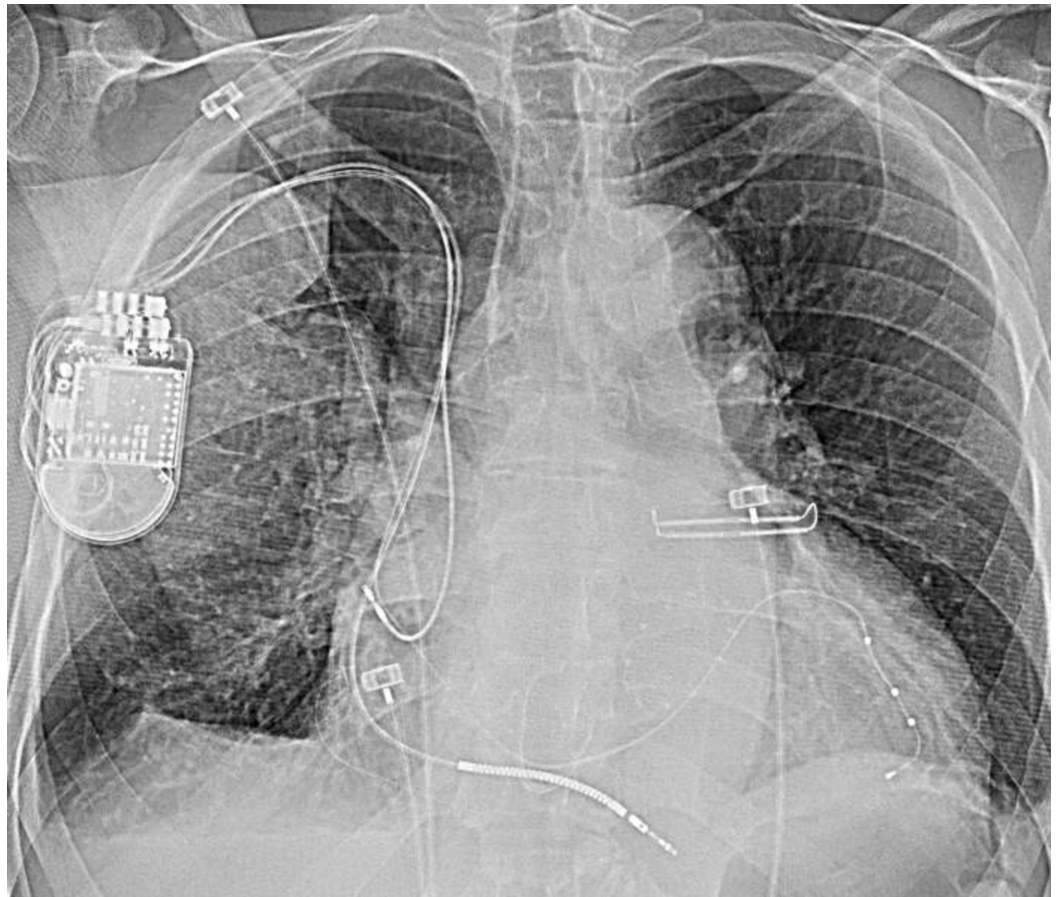


FIGURE 5: Figure shows device on the right side and leads in the appropriate position.

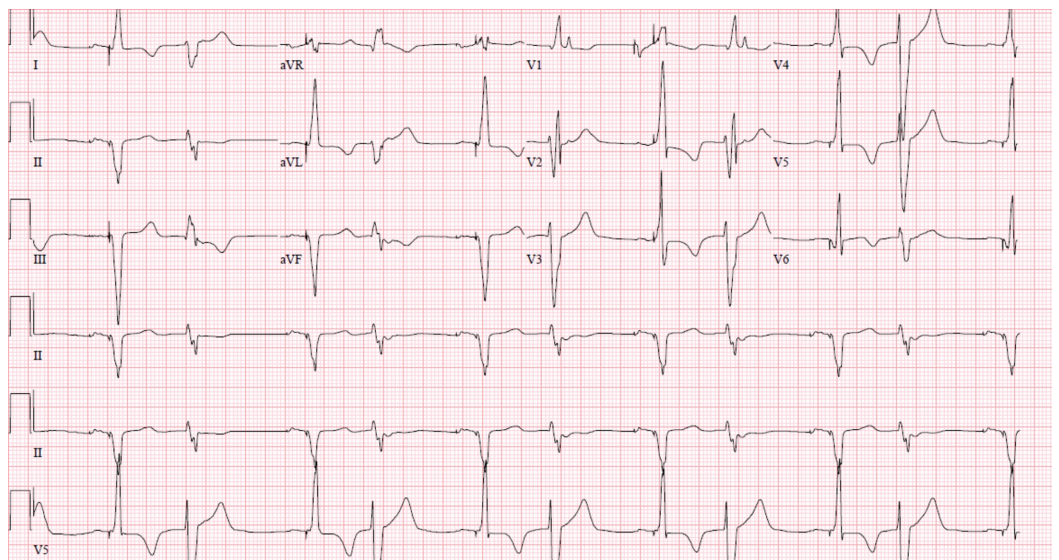


FIGURE 6: Appropriate biventricular pacing.

Discussion

Twiddler's syndrome is characterized by pacemaker lead displacement due to rotation of the generator along its long axis, usually occurring in devices loosely placed in the pocket leading to lead breakdown or insulation leakage, thus making it necessary to replace the leads. On the other hand, reel syndrome is characterized by the rotation of the generator along the transverse axis leading to the coiling of the leads by conscious or unconscious manipulation of the device, however, without any damage to the leads. Ratchet syndrome involves upward and downward shoulder motion with weak suture sleeve fixation and surplus of leads in the generator pocket [2-6]. The well-known risk factors for twiddler's syndrome are female gender, large device pocket, elderly patients, and history of dementia [7-9].

These phenomena usually present as syncope, arrhythmias, acute or sub-acute exacerbation of heart failure, and/or twitching in the shoulder/chest [9-11]. Usually reel syndrome and ratchet syndrome present early after implantation of the device as in a few weeks to one month, but twiddler's syndrome presents later over a period of months to a year [4]. It is common practice to get a chest X-ray after the device is placed and at the time of presentation to see lead dislodgement. Electrocardiogram and device interrogation are also performed routinely for diagnostic purposes [9].

Due to the dangerous complication of lead displacement or dislodgement, important prevention strategies to address them have been described in the literature. The leads can retract spontaneously without any manipulation to the device by the patient, as in ratchet syndrome, so the leads should be firmly secured in the device pocket via a suture sleeve to prevent retraction [12]. It is important to apply appropriate amount of tension so as not to damage the lead itself but making sure that it is firmly secured [10]. Smaller device pockets, suturing of the device to the fascia, and device placement in the pectoral tissue are also considered important preventative strategies [10]. Last but not the least is patient education to not manipulate the device in any manner [9].

Conclusions

Our case highlights the importance of early detection of twiddler's syndrome utilizing appropriate diagnostic modalities and suggests that ratchet syndrome can coexist with twiddler's syndrome.

Additional Information

Disclosures

Human subjects: Consent was obtained by all participants in this study. **Conflicts of interest:** In compliance with the ICMJE uniform disclosure form, all authors declare the following:

Payment/services info: All authors have declared that no financial support was received from any organization for the submitted work. **Financial relationships:** All authors have declared that they have no financial relationships at present or within the previous three years with any organizations that might have an interest in the submitted work. **Other relationships:** All authors have declared that there are no other relationships or activities that could appear to have influenced the submitted work.

References

1. Bayliss CE, Beanlands DS, Baird RJ: The pacemaker-twiddler's syndrome: a new complication of implantable transvenous pacemakers. *Can Med Assoc.* 1968, 99:371-373.
2. Carnero-Varo A, Pérez-Paredes M, Ruiz-Ros JA, Giménez-Cervantes D, Martínez-Corbalán FR, Cubero-López T, Jara-Pérez P: "Reel syndrome": a new form of twiddler's syndrome? . *Circulation.* 1999, 100:45-6.
3. Arias MA, Pachón M, Puchol A, Jiménez-López J, Rodríguez-Picón B, Rodríguez-Padial L:

- Terminology management for implantable cardiac electronic device lead macro-dislodgement. [Article in English, Spanish]. *Rev Esp Cardiol (Engl Ed)*. 2012, 65:671-3.
4. Alvarez-Acosta L, Romero Garrido R, Farrais-Villalba M, Hernández Afonso J: Reel syndrome: a rare cause of pacemaker malfunction. *BMJ Case Rep*. 2014, 2014:bcr2014204545. [10.1136/bcr-2014-204545](https://doi.org/10.1136/bcr-2014-204545)
 5. Bohm A, Komaromy K, Pinter A, Preda I: Pacemakerlead fracture due to twiddler's syndrome . *Pacing Clin Electrophysiol*. 1998, 21:1162-1165. [10.1111/j.1540-8159.1998.tb00166.x](https://doi.org/10.1111/j.1540-8159.1998.tb00166.x)
 6. Wollmann CG: Reel syndrome—the ratchet mechanism. *Minerva Cardioangiol*. 2011, 59:197-202.
 7. Mandal M, Pande A, Kahali D: A rare case of very early pacemaker twiddler's syndrome . *Heart Views*. 2012, 13:114-115. [10.4103/1995-705X.102157](https://doi.org/10.4103/1995-705X.102157)
 8. Castillo R, Cavusoglu E: Twiddler's syndrome: an interesting cause of pacemaker failure . *Cardiology*. 2006, 105:119-121. [10.1159/000090213](https://doi.org/10.1159/000090213)
 9. Munawar M, Pambudi J: Reel syndrome: a variant form of twiddler's syndrome . *J Arrhythm*. 2011, 27:338-342. [10.1016/S1880-4276\(11\)80036-0](https://doi.org/10.1016/S1880-4276(11)80036-0)
 10. Von Bergen NH, Atkins DL, Gingerich JC, Law IH: Ratchet” syndrome, another etiology for pacemaker lead dislodgement: a case report. *Heart Rhythm*. 2007, 4:788-789. [10.1016/j.hrthm.2006.12.029](https://doi.org/10.1016/j.hrthm.2006.12.029)
 11. Nicholson WJ, Tuohy KA, Tilkemeier P: Twiddler's syndrome. *N Engl J Med*. 2003, 348:1726-7. [10.1056/NEJM200304243481722](https://doi.org/10.1056/NEJM200304243481722)
 12. Cooper JM, Mountantonakis S, Robinson MR: Removing the twiddling stigma: spontaneous lead retraction without patient manipulation. *EP Europace*. 2010, 12:1347-1348. [10.1093/europace/euq157](https://doi.org/10.1093/europace/euq157)