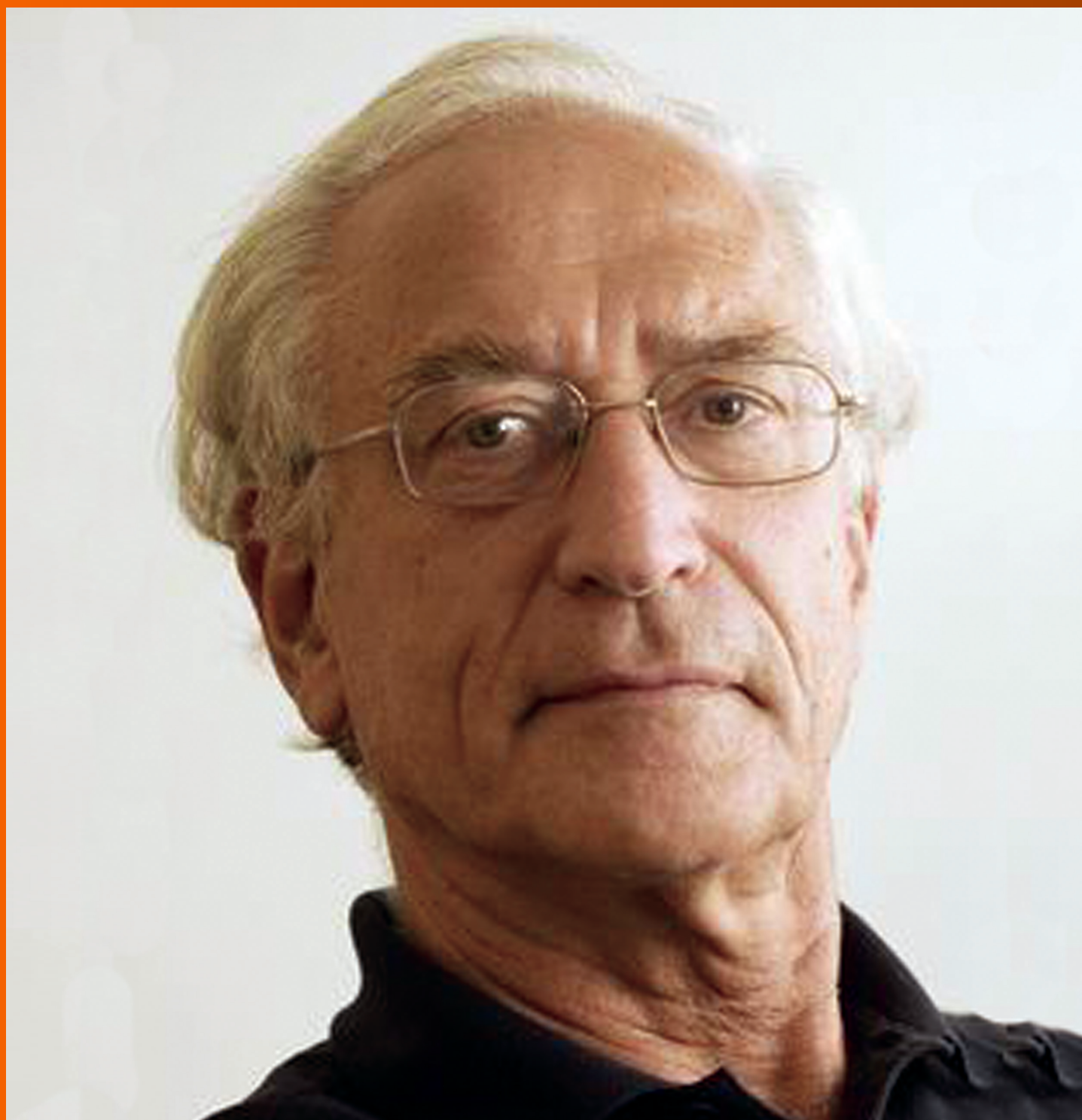


World Journal of *Gastrointestinal Surgery*

World J Gastrointest Surg 2019 March 27; 11(3): 117-197



Contents

Monthly Volume 11 Number 3 March 27, 2019

EDITORIAL

- 117 Classification and guidelines of hemorrhoidal disease: Present and future
Rubbini M, Ascanelli S
- 122 Liver preservation prior to transplantation: Past, present, and future
Chedid MF, Pinto MA, Juchem JFG, Grezzana-Filho TJM, Kruel CRP

REVIEW

- 126 Liver graft preservation methods during cold ischemia phase and normothermic machine perfusion
Tchilikidi KY
- 143 Management of pancreatic head adenocarcinoma: From where to where?
Dolay K, Malya FU, Akbulut S

MINIREVIEWS

- 155 Conduit necrosis following esophagectomy: An up-to-date literature review
Athanasiou A, Hennessy M, Spartalis E, Tan BHL, Griffiths EA

ORIGINAL ARTICLE**Prospective Study**

- 169 Learning curve of enhanced recovery after surgery (ERAS) program in open colorectal surgery
Lohsiriwat V

SYSTEMATIC REVIEW

- 179 Single incision laparoscopic fundoplication: A systematic review of the literature
Perivoliotis K, Sarakatsianou C, Tepetes K, Baloyiannis I

CASE REPORT

- 191 Laparoscopic celiac plexus ganglioneuroma resection: A video case report
Hemmati P, Ghanem O, Bingener J

ABOUT COVER

Editorial Board of *World Journal of Gastrointestinal Surgery*, Robert AFM Chamuleau, MD, PhD, Professor, Department of Hepatology, Academic Medical Center, University of Amsterdam, Amsterdam BK 1105, Netherlands

AIMS AND SCOPE

World Journal of Gastrointestinal Surgery (World J Gastrointest Surg, WJGS, online ISSN 1948-9366, DOI: 10.4240) is a peer-reviewed open access academic journal that aims to guide clinical practice and improve diagnostic and therapeutic skills of clinicians.

The *WJGS* covers topics concerning micro-invasive surgery; laparoscopy; hepatic, biliary, pancreatic and splenic surgery; surgical nutrition; portal hypertension, as well as associated subjects. The current columns of *WJGS* include editorial, frontier, diagnostic advances, therapeutics advances, field of vision, mini-reviews, review, original articles, case report, etc.

We encourage authors to submit their manuscripts to *WJGS*. We will give priority to manuscripts that are supported by major national and international foundations and those that are of great basic and clinical significance.

INDEXING/ABSTRACTING

The *WJGS* is now abstracted and indexed in PubMed, PubMed Central, Emerging Sources Citation Index (Web of Science), China National Knowledge Infrastructure (CNKI), China Science and Technology Journal Database (CSTJ), and Superstar Journals Database.

RESPONSIBLE EDITORS FOR THIS ISSUE

Responsible Electronic Editor: *Yan-Liang Zhang* Proofing Editorial Office Director: *Jin-Lei Wang*

NAME OF JOURNAL

World Journal of Gastrointestinal Surgery

ISSN

ISSN 1948-9366 (online)

LAUNCH DATE

November 30, 2009

FREQUENCY

Monthly

EDITORS-IN-CHIEF

Varut Lohsirivat, Shu-You Peng

EDITORIAL BOARD MEMBERS

<https://www.wjgnet.com/1948-9366/editorialboard.htm>

EDITORIAL OFFICE

Jin-Lei Wang, Director

PUBLICATION DATE

March 27, 2019

COPYRIGHT

© 2019 Baishideng Publishing Group Inc

INSTRUCTIONS TO AUTHORS

<https://www.wjgnet.com/bpg/gerinfo/204>

GUIDELINES FOR ETHICS DOCUMENTS

<https://www.wjgnet.com/bpg/GerInfo/287>

GUIDELINES FOR NON-NATIVE SPEAKERS OF ENGLISH

<https://www.wjgnet.com/bpg/gerinfo/240>

PUBLICATION MISCONDUCT

<https://www.wjgnet.com/bpg/gerinfo/208>

ARTICLE PROCESSING CHARGE

<https://www.wjgnet.com/bpg/gerinfo/242>

STEPS FOR SUBMITTING MANUSCRIPTS

<https://www.wjgnet.com/bpg/GerInfo/239>

ONLINE SUBMISSION

<https://www.f6publishing.com>

Management of pancreatic head adenocarcinoma: From where to where?

Kemal Dolay, Fatma Umit Malya, Sami Akbulut

ORCID number: Kemal Dolay (0000-0001-9776-8945); Fatma Umit Malya (0000-0002-6593-6112); Sami Akbulut (0000-0002-6864-7711).

Author contributions: All authors equally contributed to this paper with conception and design of the study, literature review and analysis, drafting and critical revision and editing, and final approval of the final version.

Conflict-of-interest statement: No potential conflicts of interest. No financial support.

Open-Access: This article is an open-access article which was selected by an in-house editor and fully peer-reviewed by external reviewers. It is distributed in accordance with the Creative Commons Attribution Non Commercial (CC BY-NC 4.0) license, which permits others to distribute, remix, adapt, build upon this work non-commercially, and license their derivative works on different terms, provided the original work is properly cited and the use is non-commercial. See: <http://creativecommons.org/licenses/by-nc/4.0/>

Manuscript source: Unsolicited manuscript

Received: February 27, 2019

Peer-review started: February 27, 2019

First decision: March 14, 2019

Revised: March 19, 2019

Accepted: March 20, 2019

Article in press: March 20, 2019

Published online: March 27, 2019

Kemal Dolay, Department of Surgery, Division of Hepato-Pancreato-Biliary Surgery, Istinnye University, Liv Hospital, Istanbul 34340, Turkey

Fatma Umit Malya, Department of Surgery, Bezmialem Vakif University Faculty of Medicine, Istanbul 34093, Turkey

Sami Akbulut, Department of Surgery and Liver Transplant Institute, Inonu University Faculty of Medicine, Malatya 44280, Turkey

Corresponding author: Sami Akbulut, MD, FACS, Associate Professor, Surgeon, Department of Surgery and Liver Transplant Institute, Inonu University Faculty of Medicine, Elazig Yolu 10. Km, Malatya 44280, Turkey. akbulutsami@gmail.com

Telephone: +90-422-3410660

Fax: +90-422-3410676

Abstract

Pancreatic head adenocarcinoma (PHAC) is one of the most aggressive malignancies, and it has low long-term survival rates. Surgery is the only option for long-term survival. The difficulties associated with PHAC include higher frequencies of regional or distant lymph node metastases and vascular involvement, and positive resection margins in pancreatic and retroperitoneal tissues. Radical resections increase margin negativity and life expectancy; however, the extend of the surgery applied is controversial. Thus, western and eastern centers may use different approaches. Multiorgan, peripancreatic nerve plexus, and vascular resections have been discussed in relation to radical surgery for pancreatic cancer as have the roles of neoadjuvant and adjuvant therapy regimens. Determining the appropriate limits for surgery, standardizing definitions and surgical techniques according to guidelines, and centralizing pancreatic surgery within high-volume institutions to reduce mortality and morbidity rates are among the most important issues to consider. In this review, we evaluate the basic concepts underlying and the roles of radical surgery for PHAC, and lymphadenectomy, nerve plexus, retroperitoneal tissue, vascular, and multivisceral resections, total pancreatectomy, and liver metastases are discussed.

Key words: Pancreatic head cancer; Standard pancreatectomy; Extended pancreatectomy; Regional lymphadenectomy; Extended lymphadenectomy

©The Author(s) 2019. Published by Baishideng Publishing Group Inc. All rights reserved.

P-Reviewer: Barreto SG, Liang Y, Mann O, Tang Y, Uhlmann D, Wada R

S-Editor: Wang JL

L-Editor: A

E-Editor: Zhang YL



Core tip: The challenges associated with pancreatic head adenocarcinoma include higher frequencies of regional or distant lymph node metastases and positive resection margins in the pancreatic and retroperitoneal tissues. There is no consensus on whether there is any difference between the standard and extended resections of pancreatic head adenocarcinoma in terms of in-hospital mortality, morbidity, disease free and overall survival. In this study, we aimed to discuss the positive and negative aspects of these two approaches.

Citation: Dolay K, Malya FU, Akbulut S. Management of pancreatic head adenocarcinoma: From where to where? *World J Gastrointest Surg* 2019; 11(3): 143-154

URL: <https://www.wjgnet.com/1948-9366/full/v11/i3/143.htm>

DOI: <https://dx.doi.org/10.4240/wjgs.v11.i3.143>

INTRODUCTION

The challenges associated with pancreatic head adenocarcinoma (PHAC) include higher frequencies of regional or distant lymph node (LN) metastases and positive resection margins in the pancreatic and retroperitoneal tissues. Despite advances in imaging, staging, adjuvant therapy, aggressive surgery, and down staging with neoadjuvant therapy, overall survival (OS) has not improved. Surgical resection followed by adjuvant therapy is associated with disease relapse rates of > 70%^[1]. Only 30%–40% of pancreatectomies achieve R0 resections, even in experienced hands, because the tumors spread early into and along neural sheaths^[2].

Given mortality rates of 0.7–3% and morbidity rates of 36%–41%, standardizing surgical procedures and centralizing pancreatic surgery within high-volume institutions are essential^[3]. The median OS for patients with primary resectable tumors is 20–24 mo, while that for patients with locally advanced, nonmetastatic PHAC is 9–13 mo. However, a 5-year OS rate of 25% is possible for patients who are suitable for resection; hence, surgery offers the only chance of a cure and long-term survival^[4]. The extent of regional LN invasion by PHAC is a powerful prognostic factor after resection that is independent of the histology^[5]; therefore, lymphadenectomy is a crucial step during pancreaticoduodenectomy (PD).

Halsted reported the first successful periampullary cancer resection in 1899. Subsequently, the procedure was described by Codivilla in 1898, Kaush in 1909, and Whipple in 1935^[6]. In the 1960s and 1970s, publications describing large patient series without operative deaths became available. As the short-term results became more predictable, attention turned to modifying the operation to improve the long-term oncologic outcomes. In 1973, Fortner^[7] defined regional pancreatectomy as a new technique that increased tumor resectability and improved patient outcomes. The procedure comprised a total PD with a subtotal gastrectomy and mesenteric-portal confluence resection or mesenteric venous axis and superior mesenteric artery (SMA) resections with reconstruction. This technique is extremely complex, does not improve life expectancy significantly, and has not been adopted in western countries. However, Japanese surgeons inspired by this technique have described extended LN dissections. Furthermore, multiorgan, peripancreatic nerve plexus, portal venous, and arterial resections comprise radical surgery for pancreatic cancer. In this review, we aimed to evaluate the basic concepts and the role of radical surgery in PHAC.

LYMPHADENECTOMY: ANATOMY, DEFINITIONS, AND GENERAL CONSIDERATIONS

Several routes drain lymph from the pancreatic head, and the three main lymphatic drainage pathways are a superior pathway that drains lymph into the celiac axis LNs, and two inferior pathways that drain lymph into the LNs around the SMA. Other minor lymphatic channels drain lymph into the thoracic duct directly or through the paraaortic LNs. Many studies' findings and consensus meetings have standardized LN nomenclature and definitions according to the Japan Pancreas Society definitions^[8]. Accordingly, LN metastases are divided into three groups (Figure 1). Group 1 (N1) comprises the LNs at stations 13a, 13b, 17a, and 17b located at the posterosuperior, anteroinferior, posteroinferior, and anterosuperior portions of the

pancreatic head, respectively. Group 2 (N2) comprises the LNs at stations 6, 8a, 8p, 12a, 12p, 12b, 14p, and 14d, located at the infrapyloric, anterosuperior aspect of the common hepatic artery (CHA), posterior aspect of the CHA, hepatic artery, portal vein (PV), bile duct, proximal SMA, and distal SMA nodes, respectively. Group 3 (N3) comprises the LNs at stations 1, 2, 3, 5, 7, 10, 11p, 11d, 15, 16a2, 16b1, and 18 located at the right cardiac node, left cardiac node, lesser curvature of the stomach, suprapyloric node, left gastric artery, splenic hilum, proximal splenic artery, distal splenic artery, middle colic artery, abdominal aorta from the superior margin of the celiac artery (CA) to the inferior margin of the left renal vein, abdominal aorta from the inferior margin of the left renal vein to the superior margin of the inferior mesenteric artery, and inferior margin of the pancreas, respectively.

Lymphadenectomy is the most important and fundamental step in PD. Indeed, 70.5%–77% and 18%–26% of resected pancreatic specimens have LN metastases and paraaortic LN metastases, respectively^[8-10]. Nagakawa *et al*^[9] showed that metastases were most prevalent in station 13, followed by stations 17 and 14, and 12 and 16. On average, 3.2% of LNs examined had metastases in station 16, but Kayahara *et al*^[8] determined that 13% had metastases in this station. While the extent of LN metastases tends to increase with tumor size, the relationship between tumor size and the risk of metastasis to the paraaortic region is weak. Retroperitoneal tumor invasion predicts LN metastasis. Hence, the paraaortic metastasis pathway may take a retroperitoneal lymphatic route from stations 13 to 14 before it reaches station 16; these findings led authors to consider extensive LN dissections for curative resections that included stations 14 and 16.

Standard PD successfully removes 80% of the most commonly involved LN sites^[11]; however, Ishikawa *et al*^[12] suggested that if perineural invasion is a pathway for the lymphatic spread of cancer cells, perineural and lymphatic invasion may signify lymphatic metastases before the cancer cells enter LNs, and that microinvasions might occur in the N2 region, even when nodal involvement was limited to the N1 region. Consequently, they suggested that a simple lymphadenectomy without resection of the surrounding connective tissue might be inadequate for lymphatic clearance.

The findings from a multicenter, randomized controlled trial (RCT) that compared standard and extended lymphadenectomies during PD^[13], showed that while there was no difference between standard and extended lymphadenectomy regarding survival, there was a possible trend towards longer survival for node-positive patients who underwent extended lymphadenectomies; these findings concurred with those from several retrospective studies. These investigators also found that extended lymphadenectomy did not increase the morbidity and mortality rates significantly, and they noted that disabling watery diarrhea was not a problem^[13], despite Ishikawa *et al*^[12] reporting results to the contrary.

The definitions of standard and radical or extended surgery and the usage of terminology differ among studies; these include the extended radical Whipple resection, regional pancreatectomy, extended PD, extended lymphadenectomy, and *en-bloc* resection. A consensus statement from a meeting held in 1998 to unify the surgical terminology explained that a standard PD includes regional lymphadenectomy around the duodenum and pancreas, a radical PD includes regional lymphadenectomy plus skeletonization of the hepatic arteries, the SMA between the aorta and inferior pancreaticoduodenal artery and the CA, and the dissection of the anterolateral aspect of the aorta and vena cava, including Gerota's fascia, and an extended radical PD includes radical PD and clearance of the anterior aorta between the diaphragmatic hiatus around the CA and the origin of the common iliac arteries^[14].

Yeo *et al*^[15] compared radical and standard resections, and showed no significant differences regarding the 1-, 3-, and 5-year survival rates or the median survival times (30 mo *vs* 28 mo). While the perioperative mortality rates were similar for the radical (2%) and standard (4%) procedures, the morbidity rates were higher following radical resection, because of the higher delayed gastric emptying (16% *vs* 6%) and pancreatic fistula (13% *vs* 6%) rates. Farnell *et al*^[16] compared extended and standard lymphadenectomies, and found that while the morbidity and mortality rates were comparable, the mean number of LNs resected was greater in the extended lymphadenectomy group (36 *vs* 15), and that there were no significant differences in the 1-, 3-, and 5-year survival rates. However, the long-term follow-up assessment showed that the patients who had undergone extended lymphadenectomies had significantly more diarrhea, and worse bowel control and body appearance.

Nimura *et al*^[1] designed a multicenter RCT of 101 patients with PHAC who underwent PD and were grouped into regional or extended lymphadenectomy groups. Significant differences were found between the regional and extended lymphadenectomy groups regarding the numbers of LNs harvested (13.3 *vs* 40, $P < 0.001$), but not regarding median survival (19.9 mo *vs* 13.8 mo) or the 1- (78% *vs* 54%),

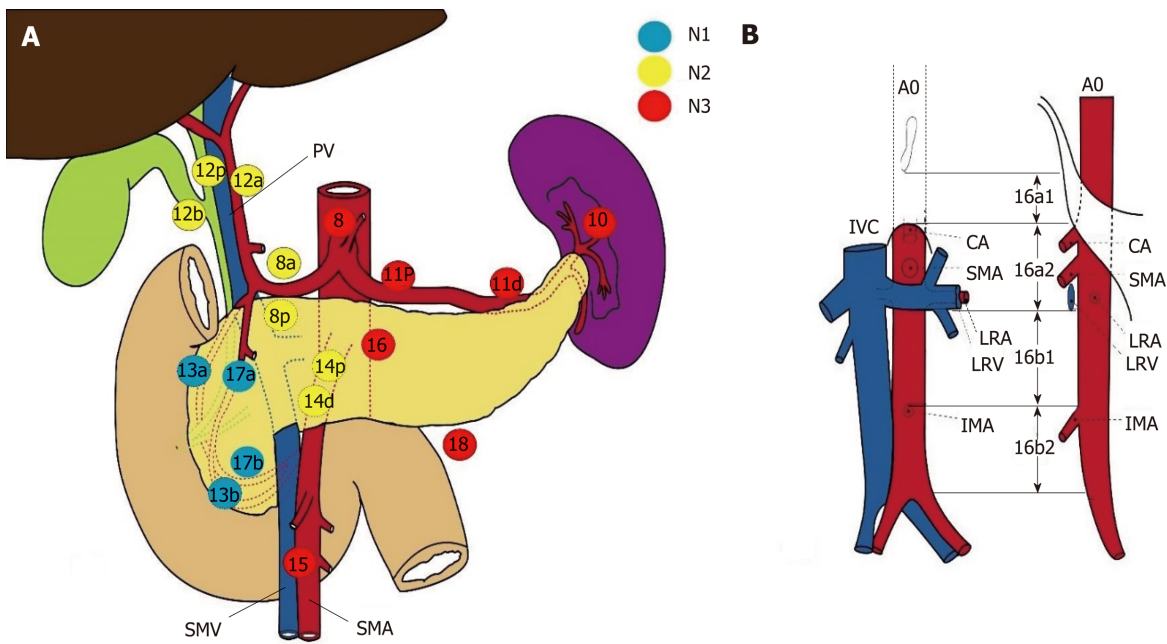


Figure 1 Japan Pancreas Society classification of the regional lymph nodes stations of the pancreas. CA: Celiac artery; SMA: Superior mesenteric artery; SMV: Superior mesenteric vein; IVC: Inferior vena cava; LRA: Left renal artery; LRV: Left renal vein.

3- (28% *vs* 18%), and 5- (16% *vs* 6%) year OS rates. Since these RCTs generated equivocal results, Pawlik *et al*^[17] and Farnell *et al*^[18] evaluated the value and principles of RCTs, and they developed a biostatistical model that accurately calculates the population size needed for powerful and meaningful statistical analyses. Their data showed that only three in 1000 patients might show a survival benefit from extended lymphadenectomy, which was based on the fact that only patients with second-echelon LN involvement could benefit from extended lymphadenectomy. Hence, > 200000 patients would be required to adequately power a trial that would detect any OS benefit.

Five metaanalyses evaluated RCTs and cohort studies that investigated the effects of extended pancreatectomy on OS, disease-free survival, and intraoperative and postoperative complications, and their findings showed no benefits associated with extended lymphadenectomy^[19-23]. These conclusions concur with the findings from an RCT from Japan that showed no long-term survival benefit after extended lymphadenectomy in patients with resectable PHAC^[1].

The International Study Group on Pancreatic Surgery (ISGPS) evaluated the extent of a standard lymphadenectomy for pancreatic cancer^[24], and the members proposed using the Japanese Pancreas Society’s nomenclature that classifies the nodal stations^[25]. Further, the ISGPS proposed a meaningful definition of a standard lymphadenectomy for PHAC that included LN stations 5, 6, 8a, 12b1, 12b2, 12c, 13a, 13b, 14a right lateral side, 14b right lateral side, 17a, and 17b, and it concluded that no strong recommendation could be made regarding the routine resection of stations 8p and 16b1.

The numbers of LNs harvested and the LN ratios of metastatic/resected LNs in gastrointestinal cancer have important roles^[26,27]. Likewise, the clinical importance of the LN count and LN ratio for survival following surgery for pancreatic cancer has been described^[28,29]. Contreras *et al*^[30] suggested that examining higher LN numbers is a multivariable predictor of a negative microscopic margin, and it can thus be accepted as a quality measure. Therefore, data exist that describe the importance of the number of LNs analyzed in relation to survival following surgery for pancreatic cancer. Schwarz *et al*^[31] postulated that the LN ratio and the number of LNs examined are important prognostic factors, and that to optimize operative benefits, ≥ 15 LNs in total or approximately 10 negative LNs should be examined for curative-intent pancreatectomy. The LN ratio was introduced to characterize the lymphatic tumor load and create a prognostic parameter independent of rough estimations based on N0 *vs* N1 or the overall number of positive LNs. In general, an LN ratio of 0.2 is the accepted cutoff value that indicates poor survival. An LN ratio > 0.2, vascular or perineural invasion, and a positive resection margin are independent prognostic factors that determine long-term survival in patients undergoing surgery for

PHAC^[32,33]. However, other studies' findings suggest an LN ratio of 0.4 as the cutoff value^[34]. Hence, further studies involving larger numbers of patients are necessary to determine the prognostic LN ratio cutoff value for PHAC.

An R0 resection is the only chance of long-term survival for patients with PHAC. The International Union Against Cancer, American Joint Committee on Cancer criteria, and College of American Pathologists reporting guidelines define an R1 resection as microscopic tumor tissue at the surgical resection margin. In Europe, the Royal College of Pathologists' guidelines define an involved margin as tumor cells within 1 mm of the resection margin. Recent analyses of resected pancreatic specimens using standardized pathologic reporting protocols showed higher R1 rates^[35-44]. Consequently, other issues aside from extended lymphadenectomy have been discussed regarding the achievement of R0 margins^[45-50].

NERVE PLEXUS AND RETROPERITONEAL TISSUE RESECTION

Pancreatic tumors tend to spread along nerves, but the underlying mechanism is not completely understood. Growth factors secreted by tumors may increase perineural connective tissue degradation, resulting in early nerve invasion^[51-53]. Several trophic factors, including glial-derived neural factors, artemin, and tyrosine kinase receptor-1, have been described^[54-56]. Extrapaneatic neural involvement may be related to early recurrence and poor outcomes^[57-59]. *En-bloc* removal of the peripaneatic neural tissue with the specimen may reduce local recurrence rates; however, it is difficult to isolate the neural tissue surrounding the SMA from the lymphatic tissue^[60]. The right half of the SMA plexuses, in particular, may show malignant cell invasions in patients with pancreatic cancer. Removing the right half of this plexus during standard lymphadenectomy without interfering with intestinal function may be possible and worthwhile^[61]. The authors of studies from westernized countries have commented on the significance and prognostic implications of these neural plexuses^[62,63]. Hence, a standard lymphatic dissection aims to resect all the lymphatic and neural tissue on the right-hand side of the SMA and all the retropaneatic tissue anterior to the aorta and vena cava, which may reduce the positive retropaneatic resection margin risk, and increase the chance of a cure.

MESOPANCREAS RESECTION

Given the tendency of cancer cells to infiltrate the retropaneatic tissue, the term "mesopancreas" has been coined to describe the perineural lymphatic layer located dorsally to the pancreas. Complete mesopancreatic resection may minimize locoregional recurrences and improve outcomes^[64]. Moreover, the epithelial-mesenchymal transition-related phenomenon underlying cancer progression has been depicted^[65] that involves tumor budding, which describes the presence of dedifferentiated, isolated single cells or small cell clusters scattered within the stroma at the invasive tumor front, and the formation of tumor deposits (TDs), which are macroscopic or microscopic nests or nodules found in the lymph drainage areas of a primary carcinoma without evidence of residual LNs in the nodules; these TDs may cause local recurrences.

Consequently, several mesopancreatic resection techniques have been described. Adham *et al*^[66] defined a "mesopancreas triangle" as an inverted triangle with its base on the posterior surfaces of the superior mesenteric vein (SMV) and PV, apex on the anterior surface of the aorta between the CA and the origin of the SMA, and its lateral boundaries limited by the right semicircumferences of the CA and SMA plexuses, and the mesopancreatic boundaries on the sagittal plane extend to the paraaortic area^[66]. Kawabata *et al*^[67] expanded this definition to include the entire paraaortic and perisuperior mesenteric arterial area. While many new "artery first" or "posterior first" *en-bloc* techniques have been described that extend the resection of the retropaneatic lymphatics, negative mesopancreatic resection margins and lower locoregional recurrence rates have not improved survival^[68], and the findings from a cadaveric anatomic-pathologic study^[69] demonstrated that the mesopancreas concept is anatomically unsubstantiated and that *en-bloc* mesopancreas removal is not possible, because no fibrous sheath or fascia exists around the retropaneatic loose areolar and adipose tissue. Subsequently, this areolar tissue has been called the "pancreatic head plexus II", which is the most accurate definition^[70]. A greater understanding of this area's boundaries and the importance of TDs would improve surgery.

Although appropriate lymphadenectomy is important to control tumors effectively, it may not be sufficient, and it should be combined with adjuvant or neoadjuvant chemotherapy with or without radiotherapy; several studies are investigating the role of neoadjuvant therapy^[71], which seems feasible for borderline and locally advanced disease. Importantly, the likelihood of delivering full-dose chemotherapy is higher before surgery and it may be more effective than postoperative therapy, because resected tumor beds are associated with poor drug delivery and low sensitivity to radiation as a consequence of reduced oxygenation.

A promising development was extended life expectancies after chemotherapy, especially in groups that had undergone surgery. The advantages of neoadjuvant chemotherapy for borderline resectable tumors seem to be important, but its efficacy is not as high as that for tumors with good responses, and further studies are necessary.

TOTAL PANCREATECTOMY

Total pancreatectomy (TP) was introduced by Ross and Porter in the 1950s to avoid pancreatic anastomosis-related complications. TP emerged as a consequence of high recurrence rates following the Whipple procedure and a belief that pancreatic cancer might be a multicentric disease. It was subsequently considered radical surgery, because it was based on the idea of removing all residual potential tumor tissue^[35]. Furthermore, it was thought that extended radical pancreatectomies could include appropriate lymphatic dissections and R0 surgical margins. The main problems associated with TP were insulin-dependent diabetes mellitus with difficult-to-control blood glucose levels and malabsorption that caused severe mortality and morbidity and significant quality of life reductions. Several centers reported perioperative mortality and morbidity rates equal to those associated with the Whipple procedure, and no improvements in long-term survival. Hence, TP was largely abandoned as part of radical resections^[37]. Sometimes, PD is required, for example, for diffuse intraductal papillary mucinous neoplasms, hereditary pancreatitis, recurrent pancreatic cancer, or pancreatic cancer, or as a rescue treatment for severe pancreaticoduodenal anastomotic leakage.

VASCULAR RESECTION

Given that an R0 resection is the cornerstone of a potential cure, determining the relationship between the primary tumor and the mesenteric vasculature, and detecting metastatic disease in the liver or peritoneum using abdominal multidetector row computed tomography or magnetic resonance imaging are crucial for planning appropriate treatment for PHAC.

PORTAL VEIN-SUPERIOR MESENTERIC VEIN RESECTION

Locally advanced disease in PHAC caused by vascular invasion occurs in up to 35% of patients, and PV resection is an important curative option that improves resectability and the R0 rate in selected patients that may be accompanied by survival benefits. Child, who first highlighted the importance of PV resection in PHAC, described a two-step PV resection during PD in 1950 that involved PV ligation, followed by PD with PV resection^[41]. This procedure did not become popular, because of its high complication and mortality rates. Several techniques were described subsequently. In addition to autologous or homologous vessel grafts for PV reconstruction, the use of artificial grafts has been reported, and end-to-end PV anastomosis following resection is the safest procedure.

PV invasion is most frequently diagnosed using computed tomographic portography, but intraportal endovascular ultrasonography requires further research and greater operator proficiency^[38]. Classifying PV invasion radiologically informs surgeons about the appropriate resection technique and resectability, and PV invasion is classified as follows: type A: absent (normal); type B: unilateral narrowing; type C: bilateral narrowing; and type D: stenosis or obstruction with collateral circulation^[39]. Pathologic findings are also classified to demonstrate correlations between invasion and OS, and the radiologic findings correlate with the pathologic findings. The pathologic findings associated with PV invasion are classified as: grade 0: no invasion; grade 1: tunica adventitia invasion; grade 2: tunica media invasion; and grade 3: tunica intima invasion^[40].

PV or SMV resections are usually required in patients with borderline-resectable pancreatic cancer (BR-PDAC). BR-PDAC was initially defined as marginal resectability^[41]. Borderline resectability was defined by the National Comprehensive Cancer Network in 2006, and was noted as a high risk for a margin-positive status in these patients. Subsequently, several groups have proposed different definitions of BR-PDAC, and a symposium held during the International Association of Pancreatology meeting in 2016 defined BR-PDAC as tumor abutment or invasion of the SMV/PV with bilateral narrowing or occlusion not exceeding the inferior border of the duodenum, tumor contact with the SMA and/or CA of < 180° without stenosis or deformity, or tumor abutment of the CHA without tumor contact with the HA and/or CA proper^[42]. All of the meeting attendees accepted that PV resection is indicated only if cancer-free surgical margins were considered achievable. The findings from a study of survival after pancreatectomy with PV resection for pancreatic cancer showed that the 1-, 3-, and 5-year survival rates were 50%, 16%, and 7%, respectively, in 40 studies involving 1351 patients^[43].

Nakao *et al*^[40] found that patients with Type A PV invasion have a significantly higher OS rate than patients with Types B, C, D, or unresectable disease. Authors note that patients with grade 0 PV invasion had a significantly higher OS rate than patients with grades 1, 2, 3, or unresectable PV invasion. The authors also reported that patients who underwent PV resection had significantly worse prognoses than those who did not undergo PV resection, because of the advanced stage of the disease, and they showed that a cancer-free surgical margin was obtained from 80.2%, 73.2%, 56.7%, and 39.7% of patients with Types A, B, C, and D PV invasion, respectively. These authors suggested that invasions of the pancreatic head nerve plexus or of the plexuses around the arteries are the main causes of cancer-positive surgical margins. Although OS is low among patients with Types C or D PV invasion, it is higher than that among patients with unresectable tumors; hence, patients with Types C or D PV invasion deserve surgery.

A recent meta-analysis that evaluated the role of PV/SMV resections on survival^[44] showed that the R1 resection rates were higher in patients with type C or D PV invasion; consequently, these authors suggested that OS would not improve following resection. The authors also pointed out that while the evidence suggested that PV/SMV resections are feasible with acceptable morbidity and mortality rates, the margin status and long-term survival improvements remained unclear. However, the studies included in this meta-analysis were retrospective and nonrandomized, and subject to selection bias and confounding. In contrast, other studies' findings, particularly those from the ESPAC 3 trial, have shown that the resection margin is not an independent prognostic indicator of survival. Hence, periarterial nerve plexus and lymphovascular invasion indicate systemic disease, but tumors requiring PV/SMV resections are bigger and more advanced, which could explain the lower survival rates. The main reason for suggesting PV/SMV resections during PDs, especially for BR-PDACs, is that OS is better compared with that for patients who do not undergo resections; resection is recommended by the ISGPS. Importantly, patients who are expected to achieve R0 resections should be selected by undertaking multidisciplinary preoperative evaluations.

ARTERIAL RESECTION

According to the current guidelines, arterial involvement requiring SMA, CHA, or CA resections defines local irresectability^[72]. However, the few studies that have investigated the outcomes of patients who underwent arterial resections for pancreatic cancer have generated inconsistent results^[72]. In their systematic review, Mollberg *et al*^[73] evaluated 26 studies' results, and they noted significant increases in the risks of perioperative mortality and morbidity, and in the reoperation rates for patients who underwent pancreatectomies with arterial resections. Moreover, they showed that the OS of patients who underwent pancreatectomies and arterial resections was significantly worse than that of patients who underwent pancreatectomies without arterial resections, and that their long-term survival rate was lower than that of patients who underwent venous resections. While these results were considered to be related to the high R1 resection rates associated with advanced tumors, the R1 resection rates did not differ between the arterial resection and non-arterial resection groups. Although the life expectancy results were not satisfactory, the long-term survival rate was better in the arterial resection group than that in the patients with inoperable tumors. The authors concluded by suggesting that arterial resections should be performed on selected groups of patients at specialized centers, and that the results should be recorded. The general condition of these patients

should be suitable for a major resection, and arterial resections should be performed if anastomoses are possible following resection.

Nakao *et al*^[74] performed curative resections in 289 (65.2%) of 443 patients with pancreatic cancer, and, of these, 200 (69.2%) underwent curative resections with vascular resections. Furthermore, PV resections without arterial resections were performed on 186 patients, and combined PV and artery resections were performed on 14 patients. Operative deaths occurred in 11 patients who underwent curative resections (3.8%), one (1.1%) of 89 patients who did not undergo vascular resections, five (2.7%) of 186 patients who underwent PV resections without arterial resections, and five (35.7%) of 14 patients who underwent PV and arterial resections. The authors noted that the patients who underwent surgery for locally advanced pancreatic cancer with HA or SMA resections had high postoperative morbidity and mortality rates and worse prognoses. Furthermore, OS in the arterial and venous resection group was similar to that observed among the patients whose tumors were unresectable.

Kato *et al*^[75] performed radical surgery on 12 patients, including HA, SMA, or CA resections, following neoadjuvant treatment, and noted significantly higher 5-year survival rates among those patients who achieved R0 resections. Stitzenberg *et al*^[76] studied 12 patients with pancreatic cancer who underwent pancreatomectomies with HA or CA resections after neoadjuvant chemotherapy, and found that the 60-d mortality rate was high (17%), and that the median survival duration after diagnosis was only 20 mo; they suggested that HA or CA resection with reconstruction might prolong survival for selected patients after neoadjuvant therapy. Christians *et al*^[77] evaluated 10 patients who underwent major arterial resections after neoadjuvant therapy, and they noted that planned arterial resection at the time of pancreatomectomy was safe for patients who were stable or responding to chemotherapy. To summarize, arterial resection during pancreatomectomy is not recommended, because it does not provide long-term survival advantages and it increases mortality and morbidity. However, if the preoperative arterial invasion signs are suspicious, the presence of arterial invasion should be confirmed, especially in patients receiving neoadjuvant therapy.

MULTIVISCERAL RESECTION

Approaches to neighboring organ involvement as part of radical surgery are discussed in relation to different visceral organ cancers, and multiorgan resections are effective for most. Regarding pancreatic cancer, and, especially, if the cancer is in the body or tail, the multiorgan involvement rate is as high as 35%^[78]. Several studies' findings have shown that the morbidity associated with extended resection increased and the survival benefit was limited following multiorgan resections. However, the findings from more recent studies have shown that *en-bloc* resections of contiguously involved organs can be performed safely in selected patients^[79]. Compared with standard resections, no differences were reported regarding perioperative morbidity (35%) and mortality (3%). Extended resections may include the mesocolon, colon, adrenal glands, liver, and stomach; the main goal of these procedures is to achieve R0 resections, because this is the most important predictor of long-term survival. Given the high morbidity rate, these radical procedures involving hepatobiliary and gastrointestinal surgery, must be undertaken in specialized centers.

LIVER METASTASES

Up to 70% of patients with PHAC present with liver metastases at the time of diagnosis or they develop liver metastases^[80]. The role of hepatectomy in patients with liver metastases from PHAC is controversial^[81-84]. Andreou *et al*^[84] examined patients' postoperative outcomes and long-term survival following pancreatic resection for PHAC and concomitant liver resection for synchronous liver metastases, and found postoperative morbidity and mortality rates of 50% and 5%, respectively, 1-, 3-, and 5-year OS rates of 41%, 13%, and 7%, respectively, and 1-, 3-, and 5-year disease-free survival rates of 39%, 9%, and 5%, respectively.

Tachezy *et al*^[82] studied 69 patients with pancreatic cancer and synchronous liver metastases, and following simultaneous resections, the 5-year OS rate was 5.8% and the median survival duration was 14.5 mo, which was significantly higher than that in the nonresected control group (median survival duration: 7.5 mo) ($P < 0.001$). Similarly, 85 patients who underwent curative resections for pancreatic cancer and liver metastases, had a median survival duration of 12.3 mo and a 5-year OS rate of 8.1%^[85].

The most important factors influencing OS following synchronous metastasis

resection are an R1 margin status at liver resection, a T4 tumor, regional LN metastases, poorly differentiated cancer, and an absence of preoperative or postoperative chemotherapy. Therefore, perioperative adjuvant treatment modalities may be essential to improve survival. Finally, prolonged survival might be possible for patients with liver metastases associated with pancreatic cancer if a tumor's biology is favorable. However, these treatments must be customized, and should be offered by highly specialized centers only.

REFERENCES

- 1 **Nimura Y**, Nagino M, Takao S, Takada T, Miyazaki K, Kawarada Y, Miyagawa S, Yamaguchi A, Ishiyama S, Takeda Y, Sakoda K, Kinoshita T, Yasui K, Shimada H, Katoh H. Standard versus extended lymphadenectomy in radical pancreatoduodenectomy for ductal adenocarcinoma of the head of the pancreas: long-term results of a Japanese multicenter randomized controlled trial. *J Hepatobiliary Pancreat Sci* 2012; **19**: 230-241 [PMID: 22038501 DOI: 10.1007/s00534-011-0466-6]
- 2 **Büchler MW**, Kleeff J, Friess H. Surgical treatment of pancreatic cancer. *J Am Coll Surg* 2007; **205**: S81-S86 [PMID: 17916525 DOI: 10.1016/j.jamcollsurg.2007.06.332]
- 3 **Kostov D**, Kobakov G, Yankov D. Involvement of regional lymph nodes in patients with pancreatic head adenocarcinoma. *Surg Chron* 2015; **20**: 265-269
- 4 **McPhee JT**, Hill JS, Whalen GF, Zayaruzny M, Litwin DE, Sullivan ME, Anderson FA, Tseng JF. Perioperative mortality for pancreatotomy: a national perspective. *Ann Surg* 2007; **246**: 246-253 [PMID: 17667503 DOI: 10.1097/01.sla.0000259993.17350.3a]
- 5 **Zacharias T**, Jaeck D, Oussoultzoglou E, Neuville A, Bachellier P. Impact of lymph node involvement on long-term survival after R0 pancreaticoduodenectomy for ductal adenocarcinoma of the pancreas. *J Gastrointest Surg* 2007; **11**: 350-356 [PMID: 17458610 DOI: 10.1007/s11605-007-0113-3]
- 6 **Griffin JF**, Poruk KE, Wolfgang CL. Pancreatic cancer surgery: past, present, and future. *Chin J Cancer Res* 2015; **27**: 332-348 [PMID: 26361403 DOI: 10.3978/j.issn.1000-9604.2015.06.07]
- 7 **Fortner JG**. Regional resection of cancer of the pancreas: a new surgical approach. *Surgery* 1973; **73**: 307-320 [PMID: 4265314]
- 8 **Kayahara M**, Nagakawa T, Kobayashi H, Mori K, Nakano T, Kadoya N, Ohta T, Ueno K, Miyazaki I. Lymphatic flow in carcinoma of the head of the pancreas. *Cancer* 1992; **70**: 2061-2066 [PMID: 1327485 DOI: 10.1097-0142(19921015)70:8<2061::AID-CNCR2820700808>3.0.CO;2-V]
- 9 **Nagakawa T**, Kobayashi H, Ueno K, Ohta T, Kayahara M, Miyazaki I. Clinical study of lymphatic flow to the paraaortic lymph nodes in carcinoma of the head of the pancreas. *Cancer* 1994; **73**: 1155-1162 [PMID: 8313317 DOI: 10.1097-0142(19940215)73:4<1155::AID-CNCR2820730406>3.0.CO;2-H]
- 10 **Nakao A**, Harada A, Nonami T, Kaneko T, Murakami H, Inoue S, Takeuchi Y, Takagi H. Lymph node metastases in carcinoma of the head of the pancreas region. *Br J Surg* 1995; **82**: 399-402 [PMID: 7796024 DOI: 10.1002/bjs.1800820340]
- 11 **Bassi C**, Salvia R, Butturini G, Marcucci S, Barugola G, Falconi M. Value of regional lymphadenectomy in pancreatic cancer. *HPB (Oxford)* 2005; **7**: 87-92 [PMID: 18333169 DOI: 10.1080/13651820510028855]
- 12 **Ishikawa O**, Ohhigashi H, Sasaki Y, Kabuto T, Fukuda I, Furukawa H, Imaoka S, Iwanaga T. Practical usefulness of lymphatic and connective tissue clearance for the carcinoma of the pancreas head. *Ann Surg* 1988; **208**: 215-220 [PMID: 2840866 DOI: 10.1097/00000658-198808000-00014]
- 13 **Pedrazzoli S**, DiCarlo V, Dionigi R, Mosca F, Pederzoli P, Pasquali C, Klöppel G, Dhaene K, Michelassi F. Standard versus extended lymphadenectomy associated with pancreatoduodenectomy in the surgical treatment of adenocarcinoma of the head of the pancreas: a multicenter, prospective, randomized study. Lymphadenectomy Study Group. *Ann Surg* 1998; **228**: 508-517 [PMID: 9790340 DOI: 10.1097/00000658-199810000-00007]
- 14 **Pedrazzoli S**, Beger HG, Obertop H, Andrén-Sandberg A, Fernández-Cruz L, Henne-Bruns D, Lüttges J, Neoptolemos JP. A surgical and pathological based classification of resective treatment of pancreatic cancer. Summary of an international workshop on surgical procedures in pancreatic cancer. *Dig Surg* 1999; **16**: 337-345 [PMID: 10449979 DOI: 10.1159/000018744]
- 15 **Yeo CJ**, Cameron JL, Lillemoie KD, Sohn TA, Campbell KA, Sauter PK, Coleman J, Abrams RA, Hruban RH. Pancreaticoduodenectomy with or without distal gastrectomy and extended retroperitoneal lymphadenectomy for periampullary adenocarcinoma, part 2: randomized controlled trial evaluating survival, morbidity, and mortality. *Ann Surg* 2002; **236**: 355-66; discussion 366-8 [PMID: 12192322 DOI: 10.1097/00000658-200209000-00012]
- 16 **Farnell MB**, Pearson RK, Sarr MG, DiMaggio EP, Burgart LJ, Dahl TR, Foster N, Sargent DJ; Pancreas Cancer Working Group. A prospective randomized trial comparing standard pancreatoduodenectomy with pancreatoduodenectomy with extended lymphadenectomy in resectable pancreatic head adenocarcinoma. *Surgery* 2005; **138**: 618-28; discussion 628-30 [PMID: 16269290 DOI: 10.1016/j.surg.2005.06.044]
- 17 **Pawlik TM**, Abdalla EK, Barnett CC, Ahmad SA, Cleary KR, Vauthey JN, Lee JE, Evans DB, Pisters PW. Feasibility of a randomized trial of extended lymphadenectomy for pancreatic cancer. *Arch Surg* 2005; **140**: 584-9; discussion 589-91 [PMID: 15967906 DOI: 10.1001/archsurg.140.6.584]
- 18 **Farnell MB**, Aranha GV, Nimura Y, Michelassi F. The role of extended lymphadenectomy for adenocarcinoma of the head of the pancreas: strength of the evidence. *J Gastrointest Surg* 2008; **12**: 651-656 [PMID: 18085343 DOI: 10.1007/s11605-007-0451-1]
- 19 **Michalski CW**, Kleeff J, Wentz MN, Diener MK, Büchler MW, Friess H. Systematic review and meta-analysis of standard and extended lymphadenectomy in pancreaticoduodenectomy for pancreatic cancer. *Br J Surg* 2007; **94**: 265-273 [PMID: 17318801 DOI: 10.1002/bjs.5716]
- 20 **Iqbal N**, Lovegrove RE, Tilney HS, Abraham AT, Bhattacharya S, Tekkis PP, Kocher HM. A comparison of pancreaticoduodenectomy with extended pancreaticoduodenectomy: a meta-analysis of 1909 patients. *Eur J Surg Oncol* 2009; **35**: 79-86 [PMID: 18356005 DOI: 10.1016/j.ejso.2008.01.002]
- 21 **Dasari BV**, Pasquali S, Vohra RS, Smith AM, Taylor MA, Sutcliffe RP, Muesan P, Roberts KJ, Isaac J, Mirza DF. Extended Versus Standard Lymphadenectomy for Pancreatic Head Cancer: Meta-Analysis of Randomized Controlled Trials. *J Gastrointest Surg* 2015; **19**: 1725-1732 [PMID: 26055135 DOI: 10.1007/s11605-015-2859-3]

- 22 **Orci LA**, Meyer J, Combescure C, Bühler L, Berney T, Toso C. A meta-analysis of extended versus standard lymphadenectomy in patients undergoing pancreatoduodenectomy for pancreatic adenocarcinoma. *HPB (Oxford)* 2015; **17**: 565-572 [PMID: 25913578 DOI: 10.1111/hpb.12407]
- 23 **Ke K**, Chen W, Chen Y. Standard and extended lymphadenectomy for adenocarcinoma of the pancreatic head: a meta-analysis and systematic review. *J Gastroenterol Hepatol* 2014; **29**: 453-462 [PMID: 24164704 DOI: 10.1111/jgh.12393]
- 24 **Tol JA**, Gouma DJ, Bassi C, Dervenis C, Montorsi M, Adham M, Andrén-Sandberg A, Asbun HJ, Bockhorn M, Büchler MW, Conlon KC, Fernández-Cruz L, Fingerhut A, Friess H, Hartwig W, Izbicki JR, Lillemoe KD, Milicevic MN, Neoptolemos JP, Shrikhande SV, Vollmer CM, Yeo CJ, Charnley RM; International Study Group on Pancreatic Surgery. Definition of a standard lymphadenectomy in surgery for pancreatic ductal adenocarcinoma: a consensus statement by the International Study Group on Pancreatic Surgery (ISGPS). *Surgery* 2014; **156**: 591-600 [PMID: 25061003 DOI: 10.1016/j.surg.2014.06.016]
- 25 **Japan Pancreas Society**. Classification of pancreatic carcinoma. 2nd ed. Tokyo: Kanehara & Co. Ltd 2003;
- 26 **Xu J**, Bian YH, Jin X, Cao H. Prognostic assessment of different metastatic lymph node staging methods for gastric cancer after D2 resection. *World J Gastroenterol* 2013; **19**: 1975-1983 [PMID: 23569344 DOI: 10.3748/wjg.v19.i12.1975]
- 27 **Pu N**, Li J, Xu Y, Lee W, Fang Y, Han X, Zhao G, Zhang L, Nuerxiati A, Yin H, Wu W, Lou W. Comparison of prognostic prediction between nomogram based on lymph node ratio and AJCC 8th staging system for patients with resected pancreatic head carcinoma: a SEER analysis. *Cancer Manag Res* 2018; **10**: 227-238 [PMID: 29440932 DOI: 10.2147/CMAR.S157940]
- 28 **Berger AC**, Watson JC, Ross EA, Hoffman JP. The metastatic/examined lymph node ratio is an important prognostic factor after pancreatoduodenectomy for pancreatic adenocarcinoma. *Am Surg* 2004; **70**: 235-40; discussion 240 [PMID: 15055847]
- 29 **Sierzega M**, Popiela T, Kulig J, Nowak K. The ratio of metastatic/resected lymph nodes is an independent prognostic factor in patients with node-positive pancreatic head cancer. *Pancreas* 2006; **33**: 240-245 [PMID: 17003644 DOI: 10.1097/01.mpa.0000235306.96486.2a]
- 30 **Contreras CM**, Lin CP, Oster RA, Reddy S, Wang T, Vickers S, Heslin M. Increased pancreatic cancer survival with greater lymph node retrieval in the National Cancer Data Base. *Am J Surg* 2017; **214**: 442-449 [PMID: 28687101 DOI: 10.1016/j.amjsurg.2017.06.036]
- 31 **Schwarz RE**, Smith DD. Extent of lymph node retrieval and pancreatic cancer survival: information from a large US population database. *Ann Surg Oncol* 2006; **13**: 1189-1200 [PMID: 16955385 DOI: 10.1245/s10434-006-9016-x]
- 32 **Huebner M**, Kendrick M, Reid-Lombardo KM, Que F, Therneau T, Qin R, Donohue J, Nagorney D, Farnell M, Sarr M. Number of lymph nodes evaluated: prognostic value in pancreatic adenocarcinoma. *J Gastrointest Surg* 2012; **16**: 920-926 [PMID: 22421988 DOI: 10.1007/s11605-012-1853-2]
- 33 **Farid SG**, Falk GA, Joyce D, Chalikhonda S, Walsh RM, Smith AM, Morris-Stiff G. Prognostic value of the lymph node ratio after resection of periampullary carcinomas. *HPB (Oxford)* 2014; **16**: 582-591 [PMID: 23777362 DOI: 10.1111/j.1477-2574.2012.00614.x]
- 34 **Slidell MB**, Chang DC, Cameron JL, Wolfgang C, Herman JM, Schulick RD, Choti MA, Pawlik TM. Impact of total lymph node count and lymph node ratio on staging and survival after pancreatotomy for pancreatic adenocarcinoma: a large, population-based analysis. *Ann Surg Oncol* 2008; **15**: 165-174 [PMID: 17896141 DOI: 10.1245/s10434-007-9587-1]
- 35 **Müller MW**, Friess H, Kleeff J, Dahmen R, Wagner M, Hinz U, Breisch-Girbig D, Ceyhan GO, Büchler MW. Is there still a role for total pancreatectomy? *Ann Surg* 2007; **246**: 966-74; discussion 974-5 [PMID: 18043098 DOI: 10.1097/SLA.0b013e31815c2ca3]
- 36 **Johnston WC**, Hoen HM, Cassera MA, Newell PH, Hammill CW, Hansen PD, Wolf RF. Total pancreatectomy for pancreatic ductal adenocarcinoma: review of the National Cancer Data Base. *HPB (Oxford)* 2016; **18**: 21-28 [PMID: 26776847 DOI: 10.1016/j.hpb.2015.07.009]
- 37 **Child CG**, Holswade GR, McClure RD, Gore AL, O'Neill EA. Pancreatoduodenectomy with resection of the portal vein in the Macaca mulatta monkey and in man. *Surg Gynecol Obstet* 1952; **94**: 31-45 [PMID: 14893090]
- 38 **Nakao A**, Kaneko T. Intravascular ultrasonography for assessment of portal vein invasion by pancreatic carcinoma. *World J Surg* 1999; **23**: 892-895 [PMID: 10449816 DOI: 10.1007/s002689900595]
- 39 **Nakao A**, Harada A, Nonami T, Kaneko T, Inoue S, Takagi H. Clinical significance of portal invasion by pancreatic head carcinoma. *Surgery* 1995; **117**: 50-55 [PMID: 7809836 DOI: 10.1016/S0039-6060(05)80229-6]
- 40 **Nakao A**, Kanzaki A, Fujii T, Kodera Y, Yamada S, Sugimoto H, Nomoto S, Nakamura S, Morita S, Takeda S. Correlation between radiographic classification and pathological grade of portal vein wall invasion in pancreatic head cancer. *Ann Surg* 2012; **255**: 103-108 [PMID: 22156923 DOI: 10.1097/SLA.0b013e318237872e]
- 41 **Mehta VK**, Fisher G, Ford JA, Poen JC, Vierra MA, Oberhelman H, Niederhuber J, Bastidas JA. Preoperative chemoradiation for marginally resectable adenocarcinoma of the pancreas. *J Gastrointest Surg* 2001; **5**: 27-35 [PMID: 11309645 DOI: 10.1016/S1091-255X(01)80010-X]
- 42 **Isaji S**, Mizuno S, Windsor JA, Bassi C, Fernández-Del Castillo C, Hackert T, Hayasaki A, Katz MHG, Kim SW, Kishiwada M, Kitagawa H, Michalski CW, Wolfgang CL. International consensus on definition and criteria of borderline resectable pancreatic ductal adenocarcinoma 2017. *Pancreatol* 2018; **18**: 2-11 [PMID: 29191513 DOI: 10.1016/j.pan.2017.11.011]
- 43 **Siriwardana HP**, Siriwardana AK. Systematic review of outcome of synchronous portal-superior mesenteric vein resection during pancreatotomy for cancer. *Br J Surg* 2006; **93**: 662-673 [PMID: 16703621 DOI: 10.1002/bjs.5368]
- 44 **Bell R**, Ao BT, Ironside N, Bartlett A, Windsor JA, Pandanaboyana S. Meta-analysis and cost effective analysis of portal-superior mesenteric vein resection during pancreatoduodenectomy: Impact on margin status and survival. *Surg Oncol* 2017; **26**: 53-62 [PMID: 28317585 DOI: 10.1016/j.suronc.2016.12.007]
- 45 **Tummala P**, Howard T, Agarwal B. Dramatic Survival Benefit Related to R0 Resection of Pancreatic Adenocarcinoma in Patients With Tumor \leq 25 mm in Size and \leq 1 Involved Lymph Nodes. *Clin Transl Gastroenterol* 2013; **4**: e33 [PMID: 23515131 DOI: 10.1038/ctg.2013.4]
- 46 **Schlitter AM**, Esposito I. Definition of microscopic tumor clearance (r0) in pancreatic cancer resections. *Cancers (Basel)* 2010; **2**: 2001-2010 [PMID: 24281214 DOI: 10.3390/cancers2042001]
- 47 **Kim KS**, Kwon J, Kim K, Chie EK. Impact of Resection Margin Distance on Survival of Pancreatic Cancer: A Systematic Review and Meta-Analysis. *Cancer Res Treat* 2017; **49**: 824-833 [PMID: 27561314]

- DOI: [10.4143/crt.2016.336](https://doi.org/10.4143/crt.2016.336)]
- 48 **Esposito I**, Kleeff J, Bergmann F, Reiser C, Herpel E, Friess H, Schirmacher P, Büchler MW. Most pancreatic cancer resections are R1 resections. *Ann Surg Oncol* 2008; **15**: 1651-1660 [PMID: [18351300](https://pubmed.ncbi.nlm.nih.gov/18351300/) DOI: [10.1245/s10434-008-9839-8](https://doi.org/10.1245/s10434-008-9839-8)]
- 49 **Verbeke CS**, Leitch D, Menon KV, McMahon MJ, Guillou PJ, Anthony A. Redefining the R1 resection in pancreatic cancer. *Br J Surg* 2006; **93**: 1232-1237 [PMID: [16804874](https://pubmed.ncbi.nlm.nih.gov/16804874/) DOI: [10.1002/bjs.5397](https://doi.org/10.1002/bjs.5397)]
- 50 **Rau BM**, Moritz K, Schuschon S, Alsfasser G, Prall F, Klar E. R1 resection in pancreatic cancer has significant impact on long-term outcome in standardized pathology modified for routine use. *Surgery* 2012; **152**: S103-S111 [PMID: [22766366](https://pubmed.ncbi.nlm.nih.gov/22766366/) DOI: [10.1016/j.surg.2012.05.015](https://doi.org/10.1016/j.surg.2012.05.015)]
- 51 **Yi SQ**, Miwa K, Ohta T, Kayahara M, Kitagawa H, Tanaka A, Shimokawa T, Akita K, Tanaka S. Innervation of the pancreas from the perspective of perineural invasion of pancreatic cancer. *Pancreas* 2003; **27**: 225-229 [PMID: [14508126](https://pubmed.ncbi.nlm.nih.gov/14508126/) DOI: [10.1097/00006676-200310000-00005](https://doi.org/10.1097/00006676-200310000-00005)]
- 52 **Ohta T**, Numata M, Tsukioka Y, Futagami F, Kayahara M, Kitagawa H, Nagakawa T, Yamamoto M, Wakayama T, Kitamura Y, Terada T, Nakanuma Y. Neurotrophin-3 expression in human pancreatic cancers. *J Pathol* 1997; **181**: 405-412 [PMID: [9196438](https://pubmed.ncbi.nlm.nih.gov/9196438/) DOI: [10.1002/\(SICI\)1096-9896\(199704\)181:4<405::AID-PATH786>3.0.CO;2-3](https://doi.org/10.1002/(SICI)1096-9896(199704)181:4<405::AID-PATH786>3.0.CO;2-3)]
- 53 **Pour PM**, Egami H, Takiyama Y. Patterns of growth and metastases of induced pancreatic cancer in relation to the prognosis and its clinical implications. *Gastroenterology* 1991; **100**: 529-536 [PMID: [1985049](https://pubmed.ncbi.nlm.nih.gov/1985049/) DOI: [10.1016/0016-5085\(91\)90226-B](https://doi.org/10.1016/0016-5085(91)90226-B)]
- 54 **Ito Y**, Okada Y, Sato M, Sawai H, Funahashi H, Murase T, Hayakawa T, Manabe T. Expression of glial cell line-derived neurotrophic factor family members and their receptors in pancreatic cancers. *Surgery* 2005; **138**: 788-794 [PMID: [16269310](https://pubmed.ncbi.nlm.nih.gov/16269310/) DOI: [10.1016/j.surg.2005.07.007](https://doi.org/10.1016/j.surg.2005.07.007)]
- 55 **Ceyhan GO**, Giese NA, Erkan M, Kerscher AG, Wente MN, Giese T, Büchler MW, Friess H. The neurotrophic factor artemin promotes pancreatic cancer invasion. *Ann Surg* 2006; **244**: 274-281 [PMID: [16858191](https://pubmed.ncbi.nlm.nih.gov/16858191/) DOI: [10.1097/01.sla.0000217642.68697.55](https://doi.org/10.1097/01.sla.0000217642.68697.55)]
- 56 **Dang C**, Zhang Y, Ma Q, Shimahara Y. Expression of nerve growth factor receptors is correlated with progression and prognosis of human pancreatic cancer. *J Gastroenterol Hepatol* 2006; **21**: 850-858 [PMID: [16704535](https://pubmed.ncbi.nlm.nih.gov/16704535/) DOI: [10.1111/j.1440-1746.2006.04074.x](https://doi.org/10.1111/j.1440-1746.2006.04074.x)]
- 57 **Takahashi T**, Ishikura H, Kato H, Tanabe T, Yoshiki T. Intrapancreatic, extra-tumoral perineural invasion (nex). An indicator for the presence of retroperitoneal neural plexus invasion by pancreas carcinoma. *Acta Pathol Jpn* 1992; **42**: 99-103
- 58 **Hirai I**, Kimura W, Ozawa K, Kudo S, Suto K, Kuzu H, Fuse A. Perineural invasion in pancreatic cancer. *Pancreas* 2002; **24**: 15-25 [PMID: [11741178](https://pubmed.ncbi.nlm.nih.gov/11741178/) DOI: [10.1097/00006676-200201000-00003](https://doi.org/10.1097/00006676-200201000-00003)]
- 59 **Nakao A**, Harada A, Nonami T, Kaneko T, Takagi H. Clinical significance of carcinoma invasion of the extrapancreatic nerve plexus in pancreatic cancer. *Pancreas* 1996; **12**: 357-361 [PMID: [8740402](https://pubmed.ncbi.nlm.nih.gov/8740402/)]
- 60 **Nagakawa T**, Mori K, Kayahara M, Ohta T, Ueno K, Sanada H, Miyazaki I. Three-dimensional studies on the structure of the tissue surrounding the superior mesenteric artery. *Int J Pancreatol* 1994; **15**: 129-188 [PMID: [8071571](https://pubmed.ncbi.nlm.nih.gov/8071571/)]
- 61 **Kawabata A**, Hamanaka Y, Suzuki T. Potentiality of dissection of the lymph nodes with preservation of the nerve plexus around the superior mesenteric artery. *Hepatogastroenterology* 1998; **45**: 236-241 [PMID: [9496520](https://pubmed.ncbi.nlm.nih.gov/9496520/)]
- 62 **Nano M**, Dal Corso H, Ferronato M, Solej M, Hornung JP. Can intestinal innervation be preserved in pancreatoduodenectomy for cancer? Results of an anatomical study. *Surg Radiol Anat* 2003; **25**: 1-5 [PMID: [12647026](https://pubmed.ncbi.nlm.nih.gov/12647026/) DOI: [10.1007/s00276-002-0086-6](https://doi.org/10.1007/s00276-002-0086-6)]
- 63 **Mitsunaga S**, Hasebe T, Iwasaki M, Kinoshita T, Ochiai A, Shimizu N. Important prognostic histological parameters for patients with invasive ductal carcinoma of the pancreas. *Cancer Sci* 2005; **96**: 858-865 [PMID: [16367904](https://pubmed.ncbi.nlm.nih.gov/16367904/) DOI: [10.1111/j.1349-7006.2005.00128.x](https://doi.org/10.1111/j.1349-7006.2005.00128.x)]
- 64 **Gockel I**, Domeyer M, Wolloscheck T, Konerding MA, Junginger T. Resection of the mesopancreas (RMP): a new surgical classification of a known anatomical space. *World J Surg Oncol* 2007; **5**: 44 [PMID: [17459163](https://pubmed.ncbi.nlm.nih.gov/17459163/) DOI: [10.1186/1477-7819-5-44](https://doi.org/10.1186/1477-7819-5-44)]
- 65 **Karamitopoulou E**, Zlobec I, Born D, Kondi-Pafiti A, Lykoudis P, Mellou A, Gennatas K, Gloor B, Lugli A. Tumour budding is a strong and independent prognostic factor in pancreatic cancer. *Eur J Cancer* 2013; **49**: 1032-1039 [PMID: [23177090](https://pubmed.ncbi.nlm.nih.gov/23177090/) DOI: [10.1016/j.ejca.2012.10.022](https://doi.org/10.1016/j.ejca.2012.10.022)]
- 66 **Adham M**, Singhirunnusorn J. Surgical technique and results of total mesopancreas excision (TMpE) in pancreatic tumors. *Eur J Surg Oncol* 2012; **38**: 340-345 [PMID: [22264964](https://pubmed.ncbi.nlm.nih.gov/22264964/) DOI: [10.1016/j.ejso.2011.12.015](https://doi.org/10.1016/j.ejso.2011.12.015)]
- 67 **Kawabata Y**, Tanaka T, Nishi T, Monma H, Yano S, Tajima Y. Appraisal of a total meso-pancreatoduodenum excision with pancreaticoduodenectomy for pancreatic head carcinoma. *Eur J Surg Oncol* 2012; **38**: 574-579 [PMID: [22575529](https://pubmed.ncbi.nlm.nih.gov/22575529/) DOI: [10.1016/j.ejso.2012.04.007](https://doi.org/10.1016/j.ejso.2012.04.007)]
- 68 **Peperini N**, Chirletti P. Mesopancreas: a boundless structure, namely R1 risk in pancreaticoduodenectomy for pancreatic head carcinoma. *Eur J Surg Oncol* 2013; **39**: 1303-1308 [PMID: [24188796](https://pubmed.ncbi.nlm.nih.gov/24188796/) DOI: [10.1016/j.ejso.2013.10.012](https://doi.org/10.1016/j.ejso.2013.10.012)]
- 69 **Agrawal MK**, Thakur DS, Somashekar U, Chandrakar SK, Sharma D. Mesopancreas: myth or reality? *JOP* 2010; **11**: 230-233 [PMID: [20442517](https://pubmed.ncbi.nlm.nih.gov/20442517/)]
- 70 **Isaji S**, Murata Y, Kishiwada M, Neoptolemos J, Urrutia R, Abbruzzese J, Büchler M. New Japanese Classification of Pancreatic Cancer. Neoptolemos J, Urrutia R, Abbruzzese J, Büchler M. *Pancreatic Cancer*. New York: Springer 2016; [DOI: [10.1007/978-1-4939-7193-0_84](https://doi.org/10.1007/978-1-4939-7193-0_84)]
- 71 **He J**, Page AJ, Weiss M, Wolfgang CL, Herman JM, Pawlik TM. Management of borderline and locally advanced pancreatic cancer: where do we stand? *World J Gastroenterol* 2014; **20**: 2255-2266 [PMID: [24605025](https://pubmed.ncbi.nlm.nih.gov/24605025/) DOI: [10.3748/wjg.v20.i9.2255](https://doi.org/10.3748/wjg.v20.i9.2255)]
- 72 **Amano H**, Miura F, Toyota N, Wada K, Katoh K, Hayano K, Kadowaki S, Shibuya M, Maeno S, Eguchi T, Takada T, Asano T. Is pancreatotomy with arterial reconstruction a safe and useful procedure for locally advanced pancreatic cancer? *J Hepatobiliary Pancreat Surg* 2009; **16**: 850-857 [PMID: [19844653](https://pubmed.ncbi.nlm.nih.gov/19844653/) DOI: [10.1007/s00534-009-0190-7](https://doi.org/10.1007/s00534-009-0190-7)]
- 73 **Mollberg N**, Rahbari NN, Koch M, Hartwig W, Hoeger Y, Büchler MW, Weitz J. Arterial resection during pancreatotomy for pancreatic cancer: a systematic review and meta-analysis. *Ann Surg* 2011; **254**: 882-893 [PMID: [22064622](https://pubmed.ncbi.nlm.nih.gov/22064622/) DOI: [10.1097/SLA.0b013e31823ac299](https://doi.org/10.1097/SLA.0b013e31823ac299)]
- 74 **Nakao A**, Takeda S, Inoue S, Nomoto S, Kanazumi N, Sugimoto H, Fujii T. Indications and techniques of extended resection for pancreatic cancer. *World J Surg* 2006; **30**: 976-82; discussion 983-4 [PMID: [16736324](https://pubmed.ncbi.nlm.nih.gov/16736324/) DOI: [10.1007/s00268-005-0438-6](https://doi.org/10.1007/s00268-005-0438-6)]
- 75 **Kato K**, Kondo S, Hirano S, Tanaka E, Shichinohe T, Tsuchikawa T, Matsumoto J. Adjuvant surgical

- therapy for patients with initially-unresectable pancreatic cancer with long-term favorable responses to chemotherapy. *J Hepatobiliary Pancreat Sci* 2011; **18**: 712-716 [PMID: 21455748 DOI: 10.1007/s00534-011-0391-8]
- 76 **Stitzenberg KB**, Watson JC, Roberts A, Kagan SA, Cohen SJ, Konski AA, Hoffman JP. Survival after pancreatectomy with major arterial resection and reconstruction. *Ann Surg Oncol* 2008; **15**: 1399-1406 [PMID: 18320285 DOI: 10.1245/s10434-008-9844-y]
- 77 **Christians KK**, Pilgrim CH, Tsai S, Ritch P, George B, Erickson B, Tolat P, Evans DB. Arterial resection at the time of pancreatectomy for cancer. *Surgery* 2014; **155**: 919-926 [PMID: 24787115 DOI: 10.1016/j.surg.2014.01.003]
- 78 **Hartwig W**, Hackert T, Hinz U, Hassenpflug M, Strobel O, Büchler MW, Werner J. Multivisceral resection for pancreatic malignancies: risk-analysis and long-term outcome. *Ann Surg* 2009; **250**: 81-87 [PMID: 19561478 DOI: 10.1097/SLA.0b013e3181ad657b]
- 79 **Petruciani N**, Debs T, Nigri G, Giannini G, Sborlini E, Kassir R, Ben Amor I, Iannelli A, Valabrega S, D'Angelo F, Gugenheim J, Ramacciato G. Pancreatectomy combined with multivisceral resection for pancreatic malignancies: is it justified? Results of a systematic review. *HPB (Oxford)* 2018; **20**: 3-10 [PMID: 28943396 DOI: 10.1016/j.hpb.2017.08.002]
- 80 **Ryan DP**, Hong TS, Bardeesy N. Pancreatic adenocarcinoma. *N Engl J Med* 2014; **371**: 2140-2141 [PMID: 25427123 DOI: 10.1056/NEJMc1412266]
- 81 **Adam R**, Chiche L, Aloia T, Elias D, Salmon R, Rivoire M, Jaeck D, Saric J, Le Treut YP, Belghiti J, Mantion G, Mentha G; Association Française de Chirurgie. Hepatic resection for noncolorectal nonendocrine liver metastases: analysis of 1,452 patients and development of a prognostic model. *Ann Surg* 2006; **244**: 524-535 [PMID: 16998361 DOI: 10.1097/01.sla.0000239036.46827.5f]
- 82 **Tachezy M**, Gebauer F, Janot M, Uhl W, Zerbi A, Montorsi M, Perinel J, Adham M, Derveniz C, Agalianos C, Malleo G, Maggino L, Stein A, Izbicki JR, Bockhorn M. Synchronous resections of hepatic oligometastatic pancreatic cancer: Disputing a principle in a time of safe pancreatic operations in a retrospective multicenter analysis. *Surgery* 2016; **160**: 136-144 [PMID: 27048934 DOI: 10.1016/j.surg.2016.02.019]
- 83 **Klein F**, Puhl G, Guckelberger O, Pelzer U, Pullankavumkal JR, Guel S, Neuhaus P, Bahra M. The impact of simultaneous liver resection for occult liver metastases of pancreatic adenocarcinoma. *Gastroenterol Res Pract* 2012; **2012**: 939350 [PMID: 23258977 DOI: 10.1155/2012/939350]
- 84 **Andreou A**, Knitter S, Klein F, Malinka T, Schmelzle M, Struecker B, Schmuck RB, Noltsch AR, Lee D, Pelzer U, Denecke T, Pratschke J, Bahra M. The role of hepatectomy for synchronous liver metastases from pancreatic adenocarcinoma. *Surg Oncol* 2018; **27**: 688-694 [PMID: 30449494 DOI: 10.1016/j.sur-onc.2018.09.004]
- 85 **Hackert T**, Niesen W, Hinz U, Tjaden C, Strobel O, Ulrich A, Michalski CW, Büchler MW. Radical surgery of oligometastatic pancreatic cancer. *Eur J Surg Oncol* 2017; **43**: 358-363 [PMID: 27856064 DOI: 10.1016/j.ejso.2016.10.023]



Published By Baishideng Publishing Group Inc
7041 Koll Center Parkway, Suite 160, Pleasanton, CA 94566, USA
Telephone: +1-925-2238242
Fax: +1-925-2238243
E-mail: bpgoffice@wjgnet.com
Help Desk: <https://www.f6publishing.com/helpdesk>
<https://www.wjgnet.com>

