



Article

Model of Risk of Exposure to Lyme Borreliosis and Tick-Borne Encephalitis Virus-Infected Ticks in the Border Area of the Czech Republic (South Bohemia) and Germany (Lower Bavaria and Upper Palatinate)

Václav Hönig^{1,2,3,*} , Pavel Švec⁴ , Lukáš Marek⁵, Tomáš Mrkvička⁶, Zubriková Dana^{7,8} , Maria (Vögerl) Wittmann⁷, Ondřej Masař⁴, Daniela Szturcová⁴, Daniel Růžek^{1,2,3} , Kurt Pfister⁷ and Libor Grubhoffer^{1,2}

¹ Institute of Parasitology, Biology Centre, Academy of Sciences of Czech Republic, Branisovska 31, 370 05 Ceske Budejovice, Czech Republic; ruzekd@paru.cas.cz (D.R.); liborex@paru.cas.cz (L.G.)

² Faculty of Science, University of South Bohemia, Branisovska 31, 370 05 Ceske Budejovice, Czech Republic

³ Veterinary Research Institute, Hudcova 296, 621 00 Brno, Czech Republic

⁴ Department of Geoinformatics, VSB—Technical University of Ostrava, 17. listopadu 15, 708 00 Ostrava, Czech Republic; pavel.svec1@vsb.cz (P.S.); ondrej.masar@gmail.com (O.M.); daniela.szturcova@vsb.cz (D.S.)

⁵ GeoHealth Laboratory, Geospatial Research Institute, University of Canterbury, Private Bag 4800, Christchurch 8140, New Zealand; lukas.marek@canterbury.ac.nz

⁶ Faculty of Economics, University of South Bohemia, Studentska 13, 370 05 Ceske Budejovice, Czech Republic; mrkvicka.toma@gmail.com

⁷ Institute of Comparative Tropical Medicine and Parasitology, Ludwig-Maximilians-Universität München, Leopoldstr. 5, 80802 Munich, Germany; cernanska@saske.sk (Z.D.); m.voegerl@googlemail.com (M.(V.)W.); kpfister@duc.ch (K.P.)

⁸ Institute of Parasitology, Slovak Academy of Sciences, Hlinkova 3, 040 01 Kosice, Slovakia

* Correspondence: honig@paru.cas.cz

Received: 22 February 2019; Accepted: 26 March 2019; Published: 2 April 2019



Abstract: In Europe, Lyme borreliosis (LB) and tick-borne encephalitis (TBE) are the two vector-borne diseases with the largest impact on human health. Based on data on the density of host-seeking *Ixodes ricinus* ticks and pathogen prevalence and using a variety of environmental data, we have created an acarological risk model for a region where both diseases are endemic (Czech Republic—South Bohemia and Germany—Lower Bavaria, Upper Palatinate). The data on tick density were acquired by flagging 50 sampling sites three times in a single season. Prevalence of the causative agents of LB and TBE was determined. Data on environmental variables (e.g., altitude, vegetation cover, NDVI, land surface temperature) were obtained from various sources and processed using geographical information systems. Generalized linear models were used to estimate tick density, probability of tick infection, and density of infected ticks for the whole area. A significantly higher incidence of human TBE cases was recorded in South Bohemia compared to Bavarian regions, which correlated with a lower tick density in Bavaria. However, the differences in pathogen prevalence rates were not significant. The model outputs were made available to the public in the form of risk maps, indicating the distribution of tick-borne disease risk in space.

Keywords: tick; Lyme borreliosis; tick-borne encephalitis; *Ixodes ricinus*; risk modeling; geographical information systems

1. Introduction

Vector-borne diseases represent a serious health risk to human and animals in many parts of the world. In Europe, pathogens transmitted by *Ixodes ricinus* (*I. ricinus*) ticks, namely agents of Lyme borreliosis (LB) and tick-borne encephalitis (TBE), are the most widespread vector-borne diseases of human [1,2]. To be able to take appropriate measures to limit the level of exposure of human populations to vector-borne pathogens, detailed knowledge of the distribution of the risk of infection in space and time is needed.

Lyme borreliosis is caused by spirochetes of the *Borrelia burgdorferi* sensu lato complex (*Spirochaetales*, *Spirochaetaceae*) and TBE by the tick-borne encephalitis virus (*Flavivirus*, *Flaviviridae*). Both the diseases are zoonoses maintained in geographically more or less specified areas in nature, called “natural foci”. Humans are accidental, predominantly dead-end hosts, which get infected when entering the natural focus. In these foci, causative agents of vector-borne diseases are maintained by circulation between arthropod vectors and transmission competent hosts. Therefore, the epidemiology of these infections is influenced not only by the intrinsic features of the pathogen, but also by the behavior and ecology of its vectors and hosts. Moreover, all three components of vector-borne pathogen natural cycles are influenced by numerous environmental factors of abiotic (temperature, air humidity, access of sunlight, altitude etc.) [3–6] or biotic (natural host availability, transmission competence of the host, vector-host contact rate, host immunity etc.) [7–9] nature. Because the environment influences all three components of the natural circulation, environmental variables may be used for the prediction of risk of infection for humans entering certain areas [10,11].

The existing models for tick-borne pathogens created for ecological or epidemiological purposes are usually based on the estimation of host-seeking tick density and/or pathogen prevalence in the field, collection of different environmental data, and use of various statistical approaches (multiple linear regression, classification and regression trees, generalized linear models etc.) in order to find a mathematical expression of the relationship between the environmental variables and characteristics of tick and pathogen distribution [6,12–17].

The main aim of this study was to use a set of tick abundance and pathogen prevalence data to prepare summarized, easy to access information on the risk of infection by tick-borne diseases for the general public. Based on the results of an extensive field sampling and laboratory analysis of the tick populations [18,19], we have developed a model for the prediction of the density of host-seeking *I. ricinus* ticks, LB spirochete and TBEV prevalence, and density of LB spirochete/TBEV-infected ticks using commonly available environmental data. Using tools of geographic information systems (GIS), we have integrated the results of the research, including the risk models, in map outputs which have been made available to the public through an interactive internet-based map portal.

2. Materials and Methods

2.1. Study Sites

The data on the distribution of *I. ricinus* tick density, and TBEV and *B. burgdorferi* s.l. prevalence in ticks were collected in the Czech-German borderland in 2010–2011. Records of retrospective LB and TBE human disease case incidence were obtained for the same area for the period 2001–2009. The study area consisted of the region of South Bohemia in the Czech Republic and the regions of Lower Bavaria and Upper Palatinate of the German Free State of Bavaria (Figure 1). Geographically, climatically, and biologically, the area is considerably heterogeneous ranging from Danube Valley at the German-Austrian border to the highest sections of Šumava (Bohemian Forest) and Bavarian Forest mountain range (280–1450 m a.s.l.). The total area under survey comprised 30,077 km² (10,056 km² in the Czech Republic and 20,021 km² in Germany). The regions of South Bohemia and Bavaria are recognized as areas of endemic occurrence of LB and TBE [20,21].

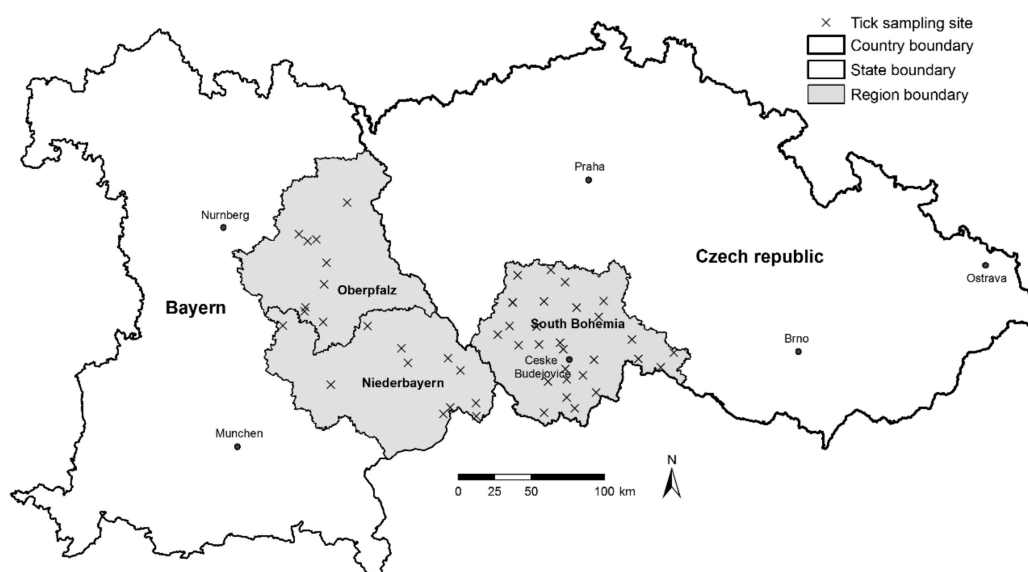


Figure 1. Surveyed area of South Bohemia (Czech Republic), Lower Bavaria and Upper Palatinate (Bavaria, Germany); Lower Bavaria—Niederbayern, Upper Palatinate (Oberpfalz), Bayern—Bavaria; localization of tick sampling sites indicated by a cross sign.

The acarological risk of tick-borne disease infection is determined by the prevalence of the pathogen in ticks and abundance of the tick population. Previous studies have shown that both the parameters may be predicted based on their known relationship to certain environmental factors [6,10,22,23]. Therefore, in the field, in a network of 50 study sites spread throughout the study area, we have collected data on the density of host-seeking *I. ricinus*, *B. burgdorferi* s.l., and TBEV prevalence. In parallel, a large dataset of environmental data was established and subsequently used to generate predictions of host-seeking tick density and pathogen prevalence for every pixel of the study area.

2.2. Field Study

The distribution of ticks and tick-borne pathogens was estimated in a network of 50 study sites (30 in South Bohemia, 20 in Bavaria—Lower Bavaria and Upper Palatinate) (Figure 1), as described in [18]. The density of host-seeking *I. ricinus* ticks was estimated by “flagging” each sampling site (600 m² per site and sampling event) three times per year (May, June/July, September/October), resulting in 150 separate entries (for details, please see [18]). Only nymphal and adult *I. ricinus* ticks were sampled, as the density of larval ticks is difficult to estimate due to their highly aggregated distribution, they rarely infest humans [24], and they generally have a low pathogen prevalence [25].

Collected ticks were transported to the laboratory and tested for the presence of DNA of *B. burgdorferi* and TBEV RNA using conventional PCR for borrelia [26,27], reverse transcription followed by conventional PCR for TBEV (samples from South Bohemia) [28], and reverse transcription followed by real-time PCR (samples from Bavaria) [29] (for more detailed information see [18] and [19]). The data for both countries were analyzed as a single dataset. Altogether, data from 15,150 and 28,862 ticks were available considering *B. burgdorferi* s.l. and TBEV infection status, respectively.

2.3. Environmental Data

Apart from the data on tick and pathogen distribution, we have used various sources to collect epidemiological (numbers of disease cases), demographic (numbers of inhabitants), and environmental data (altitude, slope, exposition, vegetation cover, temperature etc.). The types of data and their respective sources are summarized in Table 1. Satellite images acquired by the MODIS instrument were used as a source of land surface temperature (LST) and vegetation cover information—normalized difference vegetation index (NDVI). From the NASA Land Processes Distributed Active Archive Center,

the following products were downloaded for the whole area under survey: Surface Temperature & Emissivity 8-Day L3 Global, MOD11A2, and Vegetation Indices 16-Day L3 Global MOD13Q1. Individual measurements were extracted for the sampling localities and specified dates.

Table 1. Environmental and other accessory data used for model construction and testing *.

| Type of Data | Data | Description | Source Czech Rep. | Source Bavaria |
|-----------------------|-------------------------------------|---|---|---|
| Epidemiological | number LB cases number TBE cases | disease cases per municipality | National Institute of Public Health, Prague | RKI, Berlin; local public health authorities |
| Demographic | number of inhabitants | number of inhabitants per municipality | Czech Statistical Office | Federal Statistical Office Germany |
| Physical-geographical | altitude slope exposition | digital elevation model | ArcCR500, ArcDATA, Prague | Vektor 500, ATKIS® Basis DLM, Bayerische Vermessungsverwaltung |
| Climatic | land surface temperature (LST) | MODIS Land Surface Temperature, 1000 m raster | NASA, LP DAAC | NASA, LP DAAC |
| Vegetation cover | NDVI | MODIS NDVI, 250 m raster | NASA, LP DAAC | NASA, LP DAAC |
| | forest type | CORINE landcover 2006, 100 m raster | EEA | EEA |

* LB—Lyme borreliosis; TBE—tick-borne encephalitis; NDVI—normalized difference vegetation index; RKI—Robert Koch Institute; NASA, LP DAAC—National Aeronautics and Space Administration, Land Processes Distributed Active Archive Center; EEA—European Environment Agency.

Using GIS, the data were extracted and optimized to enter the analysis. With regard to differences in the resolution of the source data, we have worked with an optimized resolution of the whole dataset of a 250 m pixel size. Minimum, maximum, mean seasonal (May–September), and mean annual LST and NDVI values were calculated for individual sampling sites. In the case of physical geographical characteristics and forest type, a buffer area around the collection site was taken into account (pixel of collection site and eight surrounding pixels). The characteristics were expressed as the proportion of the area of a given quality (e.g., covered by deciduous forests). The density of host-seeking ticks was expressed as the number of ticks per 100 m², and prevalence as portion of samples positive for LB spirochetes or TBEV of total samples tested.

Epidemiological data were obtained (National Institute of Public Health, Czech Republic; Robert Koch Institute and local public health authorities, Germany) as numbers of human disease cases registered between 2001–2009 in each of the 626 municipalities in South Bohemia and 536 in the selected regions of Bavaria. Data on TBE and LB were available for South Bohemia, where both diseases are reported mandatory. In the case of Lower Bavaria and Upper Palatinate, only data on TBE could be gathered. Census of population and housing data were used as the source of numbers of inhabitants. Disease incidence was expressed as the number of cases per 100,000 inhabitants.

2.4. Model Construction

Independent models were created for the prediction of the density of host-seeking ticks (nymphal and adult *I. ricinus*), and probability of infection of a tick by LB spirochetes and TBEV. Subsequently, the tick density model was combined with either the LB spirochetes or TBEV infection probability model, giving a prediction of the density of infected ticks as a measure of risk of infection for an unvaccinated person entering a particular geographical area.

First, the correlation of all potential explanatory variables was examined by the Spearman ranking test, and cross-correlations among the variables were inspected. Significantly cross-correlated explanatory variables were grouped together. Subsequently, the set of potential explanatory variables was tested for correlation with the dependent variables. From each group of cross-correlated explanatory variables, one representative with the highest correlation coefficient with the dependent variable was chosen for further analysis.

Generalized linear models were used for host-seeking tick density prediction. With regard to the character of the data, a log-linear model with a Poisson distribution (Poisson regression model)

was applied. Individual explanatory variables were evaluated based on a Likelihood type 3 test. The quality of the model was evaluated using McFadden's pseudo R^2 .

In the case of the prediction of *B. burgdorferi* s.l. and TBEV infection in ticks, a logit model was applied. The relationship of a bivariate dependent variable (tick infected/tick not infected) with potential explanatory variables of the same dataset as in the case of host-seeking tick density was examined in the model. First, all the candidate explanatory variables were included in the model and subsequently, the variables that were not statistically significantly important were excluded, as is done using a backwards stepwise approach. Individual variables were excluded based on the comparison of Wald statistics and (cross-) correlation coefficient values. BIC and AIC criteria were controlled, indicating the performance of the whole model. The performance of the two resulting infection probability models was evaluated using ROC (Receiver Operating Characteristic) analysis. An ROC curve evaluates the relationship between the sensitivity (true positive fraction) and specificity (false positive fraction) of the model [30] and it is a suitable measure for the binary classification. The common way of interpretation of the ROC is quantifying the fraction of an area under the ROC curve (AUC). Generally speaking, the higher the AUC, the better the ability of the model to classify. A meaningful model should have an AUC higher than 0.5, which indicates that it is better than a random predictor [31].

2.5. Statistical and GIS analyses

Statistical analyses were performed using STATISTICA ver. 9 (StatSoft CR, Prague, Czech Republic) and R [32]. A non-parametric Mann-Whitney test was used for a comparison of disease incidence rates and host-seeking tick densities, and a chi square test for a comparison of the prevalence rate (LB) or minimum infection rate (TBEV). Differences with $p < 0.05$ were considered statistically significant. All GIS analyses were performed and map outputs generated using ArcGIS 10.X (ESRI, Redlands, USA). The project outputs were integrated in a web-based map portal using ArcGIS for Server (ESRI, Redlands, USA).

3. Results

3.1. Disease Incidence

In the period of 2001–2009, altogether, 1453 TBE cases were registered in South Bohemia compared to 417 cases reported in Lower Bavaria and Upper Palatinate. When expressed as incidence, 231 TBE cases per/100,000 inhabitants were reported from the South Bohemian region compared to 18 cases from Bavaria. The differences were found to be statistically significant (Mann-Whitney U Test, $p < 0.0001$).

3.2. Density of Host-Seeking *I. ricinus* Ticks and Pathogen Prevalence

All the analyses were based on aggregated data from South Bohemia and Bavaria, resulting in 50 study sites, 150 individual sampling events, 15,150 *I. ricinus* ticks analyzed for the presence of *B. burgdorferi* s.l., and 28,862 ticks tested for TBEV. The mean density of host-seeking ticks reached 30.1 nymphs/100 m² (range 1.3–110.2), and 2.0 adult ticks/100 m² (0–10.7). The mean density of all host-seeking ticks and nymphal ticks in South Bohemian sampling sites reached significantly higher values (37.4 ticks/100 m² and 34.9 nymphs/100 m²) than the abundance of host-seeking ticks in Bavarian sites (24.5 ticks/100 m² and 22.8 nymphs/100 m²) (Mann-Whitney U test, $p < 0.001$). In the case of adult ticks, the difference was not statistically significant (2.3 adult ticks/100 m² in South Bohemia and 1.7 adults/100 m² in Bavaria).

The total prevalence of LB spirochetes reached 12.3% (1865 positive samples/15,150 tested), and the minimum infection rate (MIR) (samples tested in pools) of TBEV reached 0.30% (87/28,862). Slightly higher prevalence rates of *B. burgdorferi* were observed in samples from Bavaria, whereas higher MIRs of TBEV were found in South Bohemian samples. The only statistically significant differences (χ^2 test; $p < 0.01$) were found between the *Borrelia* prevalence in adult ticks, which was

significantly higher in samples from Bavarian localities (Tables 2 and 3). Ticks positive for DNA of *B. burgdorferi* s.l. were found at each of the 50 study sites. At least one TBEV positive tick was sampled at 21 of 30 (70%) localities in South Bohemia and at 7 of 20 (35%) study sites located in Bavaria.

Table 2. Prevalence of *Borrelia burgdorferi* s.l. in field-collected *Ixodes ricinus* ticks.

| Tick Stage | Nymphs | | Adults | | Total | |
|------------|-----------------|------------|-----------------|------------|-----------------|------------|
| | Positive/Tested | Prevalence | Positive/Tested | Prevalence | Positive/Tested | Prevalence |
| S. Bohemia | 1239/9809 | 12.63% | 117/1373 | 8.52% * | 1356/11,182 | 12.13% |
| Bavaria | 458/3599 | 12.73% | 51/369 | 13.82% * | 509/3968 | 12.83% |
| Total | 1697/13,408 | 12.66% | 168/1742 | 9.64% | 1865/15,150 | 12.31% |

Statistically significant differences ($p < 0.05$) are indicated by *.

Table 3. Minimum infection rate of TBEV in field-collected *Ixodes ricinus* ticks.

| Tick Developmental Stage | Nymphs | | Adults | | Total | |
|--------------------------|-----------------|-------|-----------------|-------|-----------------|-------|
| | Positive/Tested | MIR | Positive/Tested | MIR | Positive/Tested | MIR |
| S. Bohemia | 54/18,829 | 0.29% | 10/1228 | 0.81% | 64/20,057 | 0.32% |
| Bavaria | 20/8203 | 0.24% | 3/602 | 0.50% | 23/8805 | 0.26% |
| Total | 74/27,032 | 0.27% | 13/1830 | 0.71% | 87/28,862 | 0.30% |

MIR—minimum infection rate. Statistically significant differences ($p < 0.05$) are indicated by *.

3.3. Host-Seeking Tick Density Model

Based on the Spearman ranking test, a set of potential explanatory variables was identified (Table 4) to be included in the initial model. Altitude as a well-known factor influencing tick density was included in the model, despite its poor correlation with the dependent variable in the test. Furthermore, significant differences were found among the different sampling events spring—summer—autumn (ANOVA; $p < 0.01$) and thus the sampling event was added to the model as a categorical predictor.

Table 4. Correlation of potential explanatory variables with the density of host-seeking *Ixodes ricinus* ticks *.

| Variable | Spearman R | p -Level |
|------------------------------|---------------|--------------|
| LST date of collection | 0.136 | 0.096 |
| LST seasonal mean | 0.323 | 0.001 |
| LST seasonal minimum | −0.174 | 0.033 |
| LST seasonal maximum | 0.231 | 0.004 |
| Altitude | 0.089 | 0.277 |
| Deciduous forest proportion | −0.073 | 0.373 |
| Coniferous forest proportion | 0.016 | 0.843 |
| Mixed forest proportion | 0.207 | 0.011 |
| Other veg. cover proportion | −0.174 | 0.034 |
| Proportion slope over 5% | −0.028 | 0.732 |
| Proportion northwards | 0.053 | 0.523 |
| Proportion southwards | −0.267 | 0.001 |
| Average altitude | −0.008 | 0.924 |
| NDVI Date of collection | −0.055 | 0.501 |
| NDVI May | −0.047 | 0.569 |
| NDVI June | −0.090 | 0.276 |
| NDVI July | −0.226 | 0.005 |

Table 4. Cont.

| Variable | Spearman R | p-Level |
|------------------------------|---------------|--------------|
| Proportion southwards | −0.267 | 0.001 |
| Average altitude | −0.008 | 0.924 |
| NDVI Date of collection | −0.055 | 0.501 |
| NDVI May | −0.047 | 0.569 |
| NDVI June | −0.090 | 0.276 |
| NDVI July | −0.226 | 0.005 |
| NDVI August | −0.257 | 0.002 |
| NDVI September | −0.235 | 0.004 |
| NDVI seasonal mean | −0.244 | 0.003 |
| NDVI July-September mean | −0.286 | 0.001 |
| NDVI seasonal maximum | −0.126 | 0.124 |
| NDVI seasonal minimum | −0.310 | 0.001 |

* LST—land surface temperature, NDVI—normalized difference vegetation index recorded in the indicated month of the year of tick sampling. Seasonal minimum, maximum, and mean values were calculated for the period May–September. Proportions of area of a particular character and average altitude were calculated from a pixel of sampling site and eight surrounding pixels, pixel size—250 m. Variables included in the initial model are indicated in bold.

A log-linear model with a Poisson distribution was used for host-seeking tick density prediction. According to the residual analysis, an outlier was identified and excluded from further analysis. All included variables were found to be significant in the model (Likely-hood type 3 test, $p < 0.001$). The parameters were estimated, resulting in the following equation (Table 5):

$$\ln(\text{host-seeking tick density}) = 5.973866 + \text{season} + 0.019914 \text{ LST Seasonal Mean} - 0.000770 \text{ Altitude} - 0.492528 \text{ Portion Southwards} - 1.046671 \text{ NDVI August}$$

Table 5. Parameter estimates—host-seeking tick density model *.

| Parameter | Coefficient | Standard Error | Wald Statistics | Lower Conf. Limit (95%) | Upper Conf. Limit (95%) | p |
|------------------------------|-------------|----------------|-----------------|-------------------------|-------------------------|--------|
| Intercept | 5.9739 | 0.1178 | 50.7313 | 5.7429 | 6.2045 | <0.001 |
| LST Seasonal Mean | 0.0199 | 0.0039 | 5.0860 | 0.0122 | 0.0276 | <0.001 |
| Altitude | −0.0008 | 0.0001 | −9.5683 | −0.0009 | −0.0006 | <0.001 |
| Proportion Southwards | −0.4925 | 0.0208 | −23.6768 | −0.5333 | −0.4518 | <0.001 |
| NDVI August | −1.0467 | 0.0601 | −17.4058 | −1.1641 | −0.9284 | <0.001 |
| Period—Spring | 0.3935 | 0.0144 | 27.2851 | 0.3652 | 0.4218 | <0.001 |
| Period—Summer | 0.0968 | 0.0154 | 6.2837 | 0.0666 | 0.1269 | <0.001 |

* LST—land surface temperature, NDVI August—normalized difference vegetation index recorded in August. Seasonal mean LST values were calculated for the time period of May–September. Proportions of area of a particular character (area of south-facing slopes) were calculated from the total area of the pixel of sampling site and eight surrounding pixels, pixel size—250 m.

For the only categorical variable, “season”, the following parameters were estimated: spring = 0.393470, summer = 0.096751, autumn = 0. Thus, three independent models were created for the different parts of the tick season.

The McFadden’s pseudo R^2 of the presented model reached the value of 0.203, indicating a model with very good fit. The comparison of observed and predicted tick counts on individual locations together with its confidence interval is depicted in Figure 2.

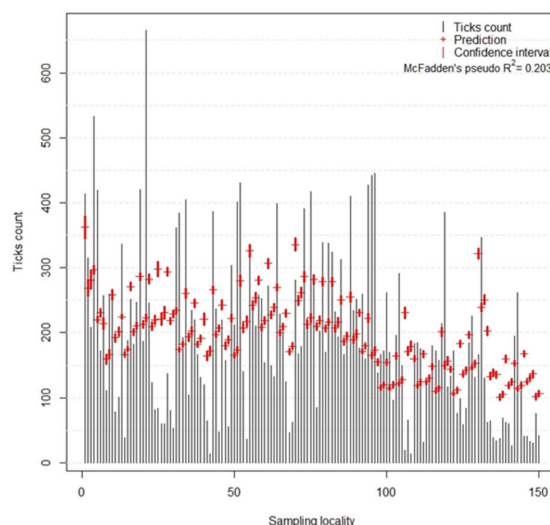


Figure 2. Comparison of observed (determined in field) and predicted (estimated by the model of host-seeking tick density) *I. ricinus* tick counts on individual sampling sites. Grey lines show the observed values, red crosses indicate the value predicted by the model, and red lines represent the confidence interval.

3.4. *B. burgdorferi* and TBEV Probability of Infection Model

The probability of infection of a tick by *B. burgdorferi* s.l. or TBEV was predicted using a logit model. The parameter estimates and goodness of fit data for the probability of infection of the tick by *B. burgdorferi* and TBEV are presented in Tables 6 and 7, respectively. Season of collection, the only categorical explanatory variable, was not found to be significant for either *Borrelia* or for the TBEV risk model.

The probability of infection of a tick by spirochetes of Lyme borreliosis was expressed by the following equation (Φ standing for the normal distribution function):

$$\text{Probability of } B. \textit{burgdorferi} \textit{ infection} = \Phi (0.546025 - 1.064178 \text{ NDVI May} - 0.153217 \text{ Portion Northwards} + 0.000483 \text{ Altitude} - 0.051443 \text{ LST Seasonal Mean})$$

Table 6. Parameter estimates for the model of probability of *B. burgdorferi* infection of ticks *.

| Parameter | Coefficient | Standard Error | Wald Statistics | Lower Conf. Limit 95% | Upper Conf. Limit 95% | p |
|-----------------------|-------------|----------------|-----------------|-----------------------|-----------------------|--------|
| Intercept | 0.5460 | 0.2657 | 2.0553 | 0.0243 | 1.0674 | 0.040 |
| NDVI May | -1.0642 | 0.167 | -6.3716 | -1.3926 | -0.7328 | <0.001 |
| Proportion northwards | -0.1532 | 0.0422 | -3.6290 | -0.2360 | -0.0713 | <0.001 |
| Altitude | 0.0005 | 0.0002 | 3.0032 | 0.0002 | 0.0008 | 0.003 |
| LST seasonal mean | -0.0514 | 0.0084 | -6.159 | -0.0679 | -0.0351 | <0.001 |

* LST—land surface temperature, NDVI May—normalized difference vegetation index recorded in May. Seasonal mean LST value was calculated for May-September. Proportions of area of a particular character (area of north-facing slopes) were calculated from the total area of the pixel of sampling site and eight surrounding pixels area, pixel size—250 m.

The probability of infection of a tick by TBEV was expressed by the following equation (Φ standing for the normal distribution function):

$$\text{Probability of TBEV infection} = \Phi (-2.275259 - 0.038585 \text{ LST seasonal minimum} + 0.218823 \text{ Mixed forest portion} - 2.526153 \text{ NDVI May} + 2.323306 \text{ NDVI seasonal maximum})$$

Table 7. Parameter estimates for the model of probability of TBEV infection in ticks *.

| Parameter | Coefficient | Standard Error | Wald Statistics | Lower Conf. Limit 95% | Upper Conf. Limit 95% | <i>p</i> |
|-------------------------|-------------|----------------|-----------------|-----------------------|-----------------------|----------|
| Intercept | −2.2753 | 0.4913 | −4.6309 | −3.2658 | −1.3322 | <0.001 |
| LST seasonal minimum | −0.0386 | 0.0151 | −2.5633 | −0.0682 | −0.0091 | 0.010 |
| Proportion mixed forest | 0.2188 | 0.0858 | 2.5497 | 0.0497 | 0.3884 | 0.011 |
| NDVI May | −2.5262 | 0.5601 | −4.5103 | −3.6222 | −1.4000 | <0.001 |
| NDVI seasonal maximum | 2.3233 | 0.6853 | 3.3903 | 0.9201 | 3.6734 | 0.001 |

* LST—land surface temperature, NDVI May—normalized difference vegetation index recorded in May. LST seasonal minimum and maximum values were calculated for May–September. Proportions of area of a particular character (area covered by mixed forests) were calculated from the total area of the pixel of sampling site and eight surrounding pixels, pixel size—250 m.

Validation of the classification ability of the previous two models was evaluated using ROC analysis. ROC curves are depicted in Figure 3, together with their AUC. AUC of the model for *B. burgdorferi* was 0.58, while the model for TBEV infection reached the level of 0.64.

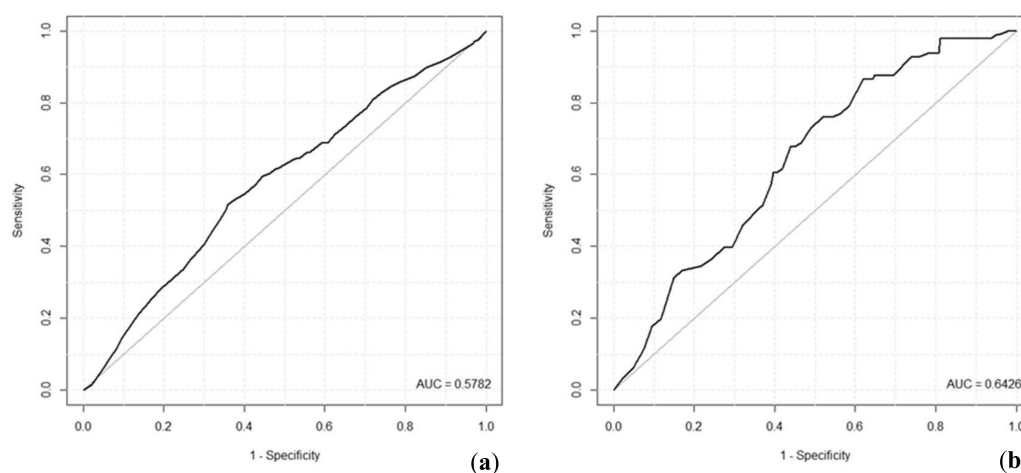


Figure 3. Receiver operating characteristics (ROC) of classification ability of *B. burgdorferi* infection probability model (a) and TBEV infection probability model (b); AUC—area under ROC curve.

By joining the model of host-seeking tick density prediction with either the model of probability of *B. burgdorferi* or TBEV infection, a risk model predicting the density of infected ticks was created. The mathematical models were integrated into the GIS system and risk maps were generated (Figure 4).

Comparison of the classification (prediction of general density of ticks without the influence of season) of the South Bohemian and Bavarian regions is presented in Table 8. Furthermore, all the epidemiological data and risk models were made available for the general public via an online map portal (http://gisak.vsb.cz/klistata/index_en.html).

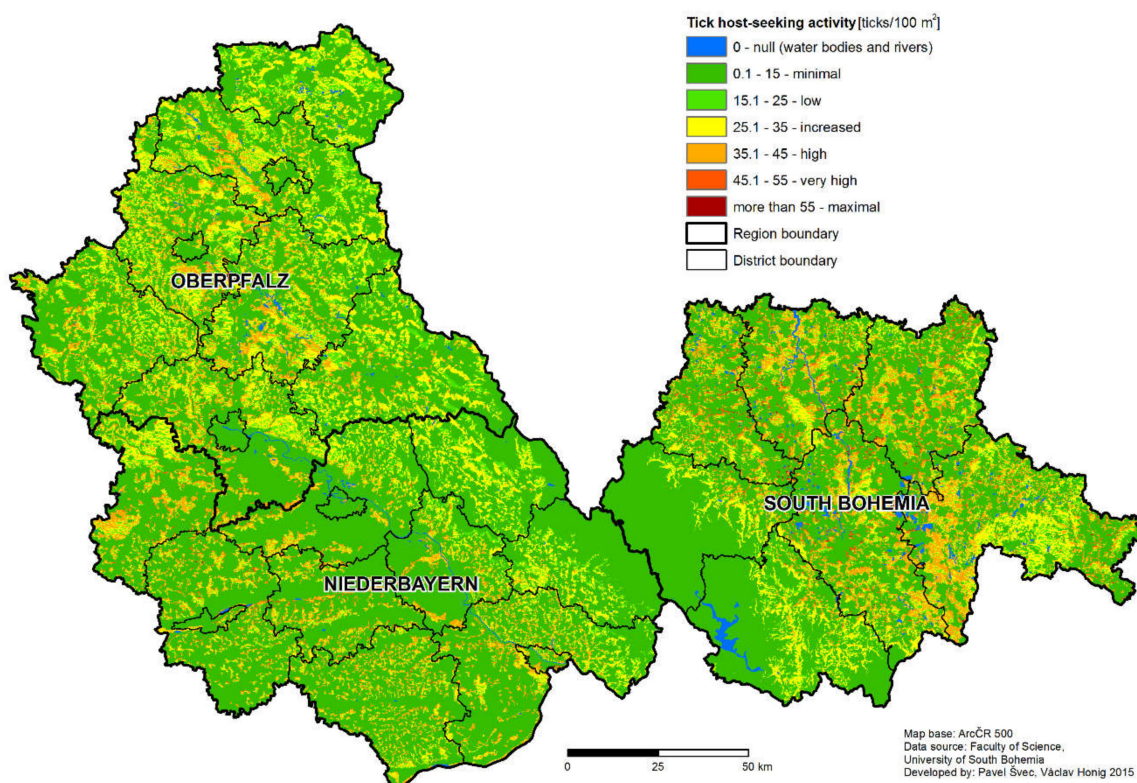


Figure 4. Map output of the model of the host-seeking tick density for South Bohemia (Czech Republic), Lower Bavaria and Upper Palatinate; Lower Bavaria—Niederbayern, Upper Palatinate (Oberpfalz). The level of the risk of encountering a host-seeking tick is indicated by color coding—blue—no risk, brown—maximum risk). The values of host-seeking tick density are only indicative and may change due to annual fluctuations.

Table 8. Comparison of area classification (prediction of tick activity without influence of season) between the region of South Bohemia (Czech Republic) and the regions of Lower Bavaria and Upper Palatinate in Bavaria (Germany).

| Category (Ticks/100 m ²) | South Bohemia | | Lower Bavaria and Upper Palatinate | |
|--------------------------------------|------------------|---------------------------|------------------------------------|---------------------------|
| | Number of Pixels | Portion of the Whole Area | Number of Pixels | Portion of the Whole Area |
| 0—water bodies | 2451 | 1.7% | 789 | 0.5% |
| 0–15 minimum | 91 832 | 63.8% | 115 708 | 66.6% |
| 15–25 low | 6741 | 4.7% | 11 626 | 6.7% |
| 25–35 increased | 20 792 | 14.5% | 28 341 | 16.3% |
| 35–45 high | 19 236 | 13.4% | 16 446 | 9.5% |
| 45–55 very high | 2602 | 1.8% | 746 | 0.4% |
| more than 55—maximum | 212 | 0.1% | 17 | 0.0% |
| Total | 143 866 | 100% | 173 673 | 100% |

4. Discussion

Tick-borne diseases are recognized as a well-known health threat in the Northern Hemisphere [33]. Our study was carried out in a Czech-German cross-border area offering two regions with relatively similar environmental conditions in two neighboring countries. The epidemiological survey has shown a high difference in the occurrence of human TBE disease cases. Far higher numbers of TBE cases were reported from South Bohemia than from regions of Lower Bavaria and Upper Palatinate in Bavaria, both in absolute numbers as well as in relative numbers per 100,000 inhabitants or km². The possible reasons for this may lie in a higher abundance of tick populations, higher prevalence of TBEV, or higher

activity of infection-susceptible humans within the TBEV foci. Differences in the case recognition and case reporting do not seem very likely, because of the well-established case definition and reporting system based on the localization of tick attack (instead of place of patient's residence). Moreover, the region of South Bohemia has in the long term, by far the highest incidence of TBE among the regions of the Czech Republic, which share the same reporting system [20]. Additionally, there is no striking difference in the vaccination rate [34,35] between the two areas. One of the previously described specific factors, which in fact increases human activity in South Bohemia, is its high popularity as a place for weekend/vacation leisure activities (mostly associated with spending time outdoors) [36,37]. Due to frequent visits of people with residence outside the region, the number of people active in risk areas is much higher than the number of inhabitants used for the relative comparison above. On the other hand, it was shown that in the vast majority of the disease cases, the area of infection coincides with the patient's residence [37]. The authors hypothesize that the trend in counter-urbanization (change of residence from urban to rural environments) may have an impact on tick-borne disease incidence in the Czech Republic [38].

The non-human associated factors that may influence the difference in the rate of TBE disease case incidence between the two regions will be discussed further. Despite the fact that the number of sampling sites differs in Germany and the Czech Republic, the density of sampling sites still allows the comparison of each area and is comparable to similar studies. The average density of host-seeking ticks was statistically significantly higher in the South Bohemian than in Bavarian study sites. This finding was further supported by the result of the tick density model, predicting higher portions of areas classified as high, very high, and maximum risk for South Bohemia than Bavaria (Table 5). As the risk of vector-borne human disease case occurrence corresponds with the rate of contact between a susceptible person and infected vector [11,39], increased activity of the vector itself increases the risk. This is especially valid in the case of Lyme borreliosis, where the pathogen seems to be present in most of the *I. ricinus* populations. Presence of *B. burgdorferi* s.l. was confirmed for all the sampling plots in our study [18,19]. It was previously noticed that the transmission cycles of TBEV are more fragile and tend to be scattered in smaller geographically-restricted areas [40]. On the other hand, in the case of TBEV, a high tick density may be a crucial factor in natural focus development and stability [41,42]. Tick-borne encephalitis virus positive sites show a higher host-seeking tick density than TBEV negative ones [18,43]. Apart from the higher prevalence of *Borrelia* in adult ticks from Bavaria, no other differences in the prevalence rate of pathogens in ticks were found in the comparison of the two regions. In general, the variability in the density of host-seeking ticks was much higher than the variability in pathogen prevalence. Therefore, in this situation, the risk of infection is rather influenced by the tick abundance compared to the pathogen prevalence. The difference in the incidence of TBE in South Bohemia and Bavaria may then be assigned not only to differences in human behavior, but also to different levels of (infected) tick density, and thus general suitability of the area for *I. ricinus* occurrence.

The main aim of our study was to offer the general public easy access to information on the risk of infection by tick-borne diseases. Infection risk estimation based on disease incidence has several advantages—provides information about epidemiological significance, takes into account insusceptible or immune persons, application of preventive measures, etc. [10,44,45]. On the other hand, such systems are, to a large extent, affected by the rate of human activity, which may result in undervaluation of the real acarological risk in less commonly visited natural areas [44]. Similarly, in regions with an extremely high vaccination rate (like Austria in the case of TBEV), the incidence-based systems are not applicable for disease risk estimation at all [46]. Furthermore, there are other sources of distortion associated with low accuracy in the geographic localization of the infected vector attack, differences in case definitions, differences in the awareness of the medical doctors, and loss of resolution due to legal or other reasons [10,44,45]. Recently, as an alternative approach, surveillance systems based on the estimation of TBE seroprevalence in sentinel animals were proposed [47]. The authors also mention that the detection of TBEV in ticks is not a suitable indicator for TBE infection risk estimation.

Our study shows that at least in areas with high TBEV occurrence, this approach brings valuable data for disease risk estimation.

The close relationship between the abundance of vector species and various environmental variables, together with the increased availability of high-resolution sources of geo-referenced environmental data and growing capabilities of GIS tools, have made it possible to construct (infected) vector-based models [44,48]. Such systems allow the prediction of infection risk that is encountered by a susceptible person entering a certain geographical area. In the case of our model, this means prediction of the density of infected ticks. We have proposed a model predicting the density of host-seeking ticks and probability of tick infection by either LB spirochetes or TBEV.

The potential explanatory variables were similar to those in other tick-borne disease risk models [6,13,17]. All the three models share some of the significant predictors: land surface temperature and NDVI (two of them altitude, orientation of the slope), although the specific forms of the variable expression differ (mean, minimum, month of NDVI reading). NDVI and other remote sensing data-derived indices describing the vegetation cover are frequently used predictors in tick (tick-borne disease) ecological and epidemiological studies [12,13,15,49]. Information on vegetation cover contains not only information on climatic and to some extent even microclimatic conditions, but also information on probable tick host species' richness and abundance. Nevertheless, characteristics of vegetation cover are usually combined with climatic factors to increase the model accuracy [13,50], as it was shown that variation in climatic conditions may influence the relationship between tick abundance and NDVI [50,51]. Furthermore, data on (adult tick) host availability (typically deer abundance) are frequently powerful predictors of tick density [16,52]. Such data, with a sufficient resolution and comparable quality for the whole area, were not available at the time of the study.

The purpose of this study was to model the tick-borne disease risk and hence the environmental variables were used as technical correlates. Thus, causality of the relationships is not necessarily direct. A positive correlation of density of host-seeking ticks with land surface temperatures and negative correlation with altitude were recorded, as expected [4,5]. In the case of the prediction of probability of infection, we would assume an indirect interaction mediated by host species composition and ratio between the abundance of transmission competent and incompetent hosts influencing the tick abundance and prevalence of the pathogens [7,9].

Different genospecies of the *B. burgdorferi* s.l. complex display different potential to cause Lyme disease in human [53]. In our study, we have used data on the occurrence of *B. burgdorferi* s.l., regardless of the particular genospecies. Nevertheless, it was previously reported for a part of the same set of tick samples, that the majority of LB spirochete positive ticks were infected by unequivocally pathogenic species (*B. burgdorferi* s. s., *B. afzelii*, *B. garinii*, *B. bavariensis*, *B. spielmanii*) [53], namely more than 96% in South Bohemia [18] and 81% in Lower Bavaria and Upper Palatinate [19]. Furthermore, other genospecies of the *B. burgdorferi* complex (*B. bissetti*, *B. valaisiana*, *B. lusitaniae*) may be at least conditionally pathogenic [53,54]. Therefore, we have used the data on *B. burgdorferi* sensu lato presence in ticks for the model construction.

The quality of the prediction of host-seeking tick density by the model was evaluated using McFadden's pseudo R^2 . This goodness-of-fit index can be understood as an alternative to OLS coefficient of determination (R^2); however, as stated by [55], its values tend to be considerably lower than R^2 , for example, values of 0.2 to 0.4 represent an excellent fit of the model. Hence, in our case, the value of 0.203 indicates a model with very good fit. Relatively low ROC values reached by the tick infection probability models indicate that both models are suitable for predictions; however, their predicting ability is limited.

The resolution of the model is crucial in its ability to distinguish small areas of high risk in large low risk areas [10], which is a typical pattern in diseases with natural focality, like TBE. The spatial structure of TBE focus consists of a microfocus, relatively small core area, where the virus is present continuously and a wider surrounding area, where the virus is spread by vertebrate hosts, predominantly rodents [56]. Based on the longitudinal monitoring of two foci identified based

on an analysis of human TBE disease cases, Dobler et al. [56] estimated the size of a TBE focus to be about 2500 m². The final resolution of the model (250 × 250 m pixel size) is, in principal, capable of the distinction of potential tick-borne disease foci of a small size. Compared to similar studies [3,6,13], we have attempted to consider a rather large area in order to provide meaningful information to the public. Despite the relatively lower number of sampling sites, we have included the majority of relevant *I. ricinus* habitat types to obtain a reliable risk prediction.

An obvious limitation of the model is that the data were collected in a single season. Annual variations in total tick abundance, as well in the seasonal patterns, were reported previously. Nevertheless, the ratios among different study sites seem to be more stable [39,57–61]. Hence, we consider the proposed model of tick abundance without the influence of season as generally valid in the sense of relative risk prediction, despite the annual variations. Accordingly, the graphical representation of the model shows classes of minimum to maximum risk, with tick density being only an indicative value. Some annual variations were also observed in the prevalence of TBEV and LB spirochetes [58,62,63]. Nevertheless, concerning the overall low prevalence of TBEV, the risk is more related to presence/absence of the pathogen, which is geographically stable, at least for shorter periods of time (several years). Concerning the predicted probability of infection by *B. burgdorferi* s.l., it is an image of a single-year situation rather than a prediction valid for several consecutive years.

5. Conclusions

To conclude, a considerably higher incidence rate of TBE in South Bohemian parts of the study area compared to Bavarian parts was revealed. These differences should be at least partially assigned to the higher density of host-seeking *I. ricinus* ticks in South Bohemia. Spatial models of tick abundance, probability of tick infection by *B. burgdorferi* and TBEV, and models of the density of infected *I. ricinus* ticks were constructed based on correlations with environmental variables. From our present experience, the final presentation of the data in a form of an interactive online map portal (http://gisak.vsb.cz/klistata/index_en.html) seems to be an ideal way to pass the information to the public.

Author Contributions: Study design, tick sampling, tick testing, statistical evaluation of the results, and drafting the manuscript, V.H.; GIS, data extraction, processing, transformation, GIS-based analysis, and study design, P.S.; model design and testing validation, T.M. and L.M.; methods of pathogen detection, tick sampling, laboratory analysis, and primary data analysis, D.Z.; tick sampling, laboratory analysis, primary data analysis, M.W.; model implementation and online web portal, O.M.; data processing, database management, and data analysis, D.S.; were the supervision, and were involved in manuscript corrections and revisions, D.R., K.P., and L.G.

Funding: This research was co-financed by the EUROPEAN REGIONAL DEVELOPMENT FUND OF THE EUROPEAN UNION; project “Ticks and tick borne infectious diseases in the conditions of South Bohemia and Bavaria”, by the REGION OF SOUTH BOHEMIA and by the following grants: GRANT AGENCY OF THE VSB-TU OSTRAVA, SP/2010184; GRANT AGENCY OF THE CZECH REPUBLIC, 206/09/H026 and Z60220518, SLOVAK RESEARCH AND DEVELOPMENT AGENCY, APVV-16-0518. V.H. and D.R. were supported by THE MINISTRY OF EDUCATION, YOUTH AND SPORTS OF THE CZECH REPUBLIC, project LO1218 from the under the NPU I program.

Acknowledgments: The authors would like to thank the institutions which made various types of data available to us: National Institute of Public Health, Prague and Regional Public Health Authority, South Bohemia, Ceske Budejovice, Robert Koch Institute, Berlin and Bavarian local public health authorities (epidemiological data), Federal Statistical Office Germany (numbers of inhabitants—Bavaria), ArcDATA Prague, and Bayerische Vermessungsverwaltung (cartographic data). We are also grateful for the advice and help of Dr. Danielova and Dr. Daniel at the beginning of the project. Special thanks belong to Radka Bunesova for all the help with the project administration.

Conflicts of Interest: The authors declare no conflict of interest.

References

1. Charrel, R.N.; Attoui, H.; Butenko, A.M.; Clegg, J.C.; Deubel, V.; Frolova, T.V.; Gould, E.A.; Gritsun, T.S.; Heinz, F.X.; Labuda, M.; et al. Tick-borne virus diseases of human interest in Europe. *Clin. Microbiol. Infect.* **2004**, *10*, 1040–1055. [CrossRef]

2. Parola, P.; Raoult, D. Tick-borne bacterial diseases emerging in Europe. *Clin. Microbiol. Infect.* **2001**, *7*, 80–83. [[CrossRef](#)] [[PubMed](#)]
3. Eisen, R.J.; Eisen, L.; Girard, Y.A.; Fedorova, N.; Mun, J.; Slikas, B.; Leonhard, S.; Kitron, U.; Lane, R.S. A spatially-explicit model of acarological risk of exposure to *Borrelia burgdorferi*-infected *Ixodes pacificus* nymphs in northwestern California based on woodland type, temperature, and water vapor. *Ticks Tick-Borne Dis.* **2010**, *1*, 35–43. [[CrossRef](#)]
4. Materna, J.; Daniel, M.; Metelka, L.; Harčarik, J. The vertical distribution, density and the development of the tick *Ixodes ricinus* in mountain areas influenced by climate changes (The Krkonoše Mts., Czech Republic). *Int. J. Med. Microbiol.* **2008**, *298* (Suppl. 1), 25–37. [[CrossRef](#)]
5. Perret, J.-L.; Rais, O.; Gern, L. Influence of climate on the proportion of *Ixodes ricinus* nymphs and adults questing in a tick population. *J. Med. Entomol.* **2004**, *41*, 361–365. [[CrossRef](#)] [[PubMed](#)]
6. Rizzoli, A.; Merler, S.; Furlanello, C.; Genchi, C. Geographical information systems and bootstrap aggregation (bagging) of tree-based classifiers for Lyme disease risk prediction in Trentino, Italian Alps. *J. Med. Entomol.* **2002**, *39*, 485–492. [[CrossRef](#)]
7. Bolzoni, L.; Rosa, R.; Cagnacci, F.; Rizzoli, A. Effect of deer density on tick infestation of rodents and the hazard of tick-borne encephalitis. II: Population and infection models. *Int. J. Parasitol.* **2012**, *42*, 373–381. [[CrossRef](#)]
8. Dizij, A.; Kurtenbach, K. *Clethrionomys glareolus*, but not *Apodemus flavicollis*, acquires resistance to *Ixodes ricinus* L., the main European vector of *Borrelia burgdorferi*. *Parasit. Immunol.* **1995**, *17*, 177–183. [[CrossRef](#)]
9. Ostfeld, R.S.; Levi, T.; Jolles, A.E.; Martin, L.B.; Hosseini, P.R.; Keesing, F. Life history and demographic drivers of reservoir competence for three tick-borne zoonotic pathogens. *PLoS ONE* **2014**, *9*, e107387. [[CrossRef](#)] [[PubMed](#)]
10. Eisen, R.J.; Eisen, L. Spatial modeling of human risk of exposure to vector-borne pathogens based on epidemiological versus arthropod vector data. *J. Med. Entomol.* **2008**, *45*, 181–192. [[CrossRef](#)] [[PubMed](#)]
11. Randolph, S.E. The shifting landscape of tick-borne zoonoses: Tick-borne encephalitis and Lyme borreliosis in Europe. *Philos. Trans. R. Soc. Lond. B Biol. Sci.* **2001**, *356*, 1045–1056. [[CrossRef](#)]
12. Daniel, M.; Kolar, J.; Zeman, P.; Pavelka, K.; Sadlo, J. Predictive map of *Ixodes ricinus* high-incidence habitats and a tick-borne encephalitis risk assessment using satellite data. *Exp. Appl. Acarol.* **1998**, *22*, 417–433. [[CrossRef](#)] [[PubMed](#)]
13. Eisen, R.J.; Eisen, L.; Lane, R.S. Predicting density of *Ixodes pacificus* nymphs in dense woodlands in Mendocino County, California, based on geographic information systems and remote sensing versus field-derived data. *Am. J. Trop. Med. Hyg.* **2006**, *74*, 632–640. [[CrossRef](#)]
14. Ripoché, M.; Lindsay, L.; Ludwig, A.; Ogden, N.; Thivierge, K.; Leighton, P.; Ripoché, M.; Lindsay, L.R.; Ludwig, A.; Ogden, N.H.; et al. Multi-scale clustering of Lyme disease risk at the expanding leading edge of the range of *Ixodes scapularis* in Canada. *Int. J. Environ. Res. Public Health* **2018**, *15*, 603. [[CrossRef](#)]
15. Rosa, R.; Andreo, V.; Tagliapietra, V.; Baráková, I.; Arnoldi, D.; Hauffe, H.; Manica, M.; Rosso, F.; Blaňarová, L.; Bona, M.; et al. Effect of climate and land use on the spatio-temporal variability of tick-borne bacteria in Europe. *Int. J. Environ. Res. Public Health* **2018**, *15*, 732. [[CrossRef](#)]
16. Vourc’h, G.; Abrial, D.; Bord, S.; Jacquot, M.; Masségli, S.; Poux, V.; Pisanu, B.; Bailly, X.; Chapuis, J.-L. Mapping human risk of infection with *Borrelia burgdorferi* sensu lato, the agent of Lyme borreliosis, in a periurban forest in France. *Ticks Tick-Borne Dis.* **2016**, *7*, 644–652. [[CrossRef](#)]
17. Zeimes, C.B.; Olsson, G.E.; Hjertqvist, M.; Vanwambeke, S.O. Shaping zoonosis risk: Landscape ecology vs. landscape attractiveness for people, the case of tick-borne encephalitis in Sweden. *Parasit. Vectors* **2014**, *7*, 370. [[CrossRef](#)] [[PubMed](#)]
18. Honig, V.; Svec, P.; Halas, P.; Vavruskova, Z.; Tykalova, H.; Kilian, P.; Vetiskova, V.; Dornakova, V.; Sterbova, J.; Simonova, Z.; et al. Ticks and tick-borne pathogens in South Bohemia (Czech Republic)—Spatial variability in *Ixodes ricinus* abundance, *Borrelia burgdorferi* and tick-borne encephalitis virus prevalence. *Ticks Tick-Borne Dis.* **2015**, *6*, 559–567. [[CrossRef](#)]
19. Vogerl, M.; Zubrikova, D.; Pfister, K. Prevalence of *Borrelia burgdorferi* s.l. in *Ixodes ricinus* ticks from four localities in Bavaria, Germany. *Berl. Munch. Tierarztl. Wochenschr.* **2012**, *125*, 401–406. [[PubMed](#)]
20. Kriz, B.; Beneš, C.; Daniel, M.; Maly, M. Incidence of tick-borne encephalitis in the Czech Republic in 2001–2011 in different administrative regions and municipalities with extended power. *Epidemiol. Mikrobiol. Immunol.* **2013**, *62*, 9–18.

21. Suss, J.; Schrader, C.; Falk, U.; Wohanka, N. Tick-borne encephalitis (TBE) in Germany—Epidemiological data, development of risk areas and virus prevalence in field-collected ticks and in ticks removed from humans. *Int. J. Med. Microbiol.* **2004**, *293* (Suppl. 37), 69–79. [[CrossRef](#)]
22. Cortinas, M.R.; Guerra, M.A.; Jones, C.J.; Kitron, U. Detection, characterization, and prediction of tick-borne disease foci. *Int. J. Med. Microbiol.* **2002**, *291* (Suppl. 33), 11–20. [[CrossRef](#)]
23. Daniel, M.; Zitek, K.; Danielova, V.; Kriz, B.; Valter, J.; Kott, I. Risk assessment and prediction of *Ixodes ricinus* tick questing activity and human tick-borne encephalitis infection in space and time in the Czech Republic. *Int. J. Med. Microbiol.* **2006**, *296* (Suppl. 40), 41–47. [[CrossRef](#)]
24. Wilhelmsson, P.; Lindblom, P.; Fryland, L.; Nyman, D.; Jaenson, T.G.; Forsberg, P.; Lindgren, P.-E. *Ixodes ricinus* ticks removed from humans in Northern Europe: Seasonal pattern of infestation, attachment sites and duration of feeding. *Parasit. Vector* **2013**, *6*, 362. [[CrossRef](#)]
25. Strnad, M.; Hönig, V.; Ruzek, D.; Grubhoffer, L.; Rego, R.O.M. Europe-wide meta-analysis of *Borrelia burgdorferi* sensu lato prevalence in questing *Ixodes ricinus* ticks. *Appl. Environ. Microbiol.* **2017**, *83*. [[CrossRef](#)]
26. Demaerschalck, I.; Ben Messaoud, A.; De Kesel, M.; Hoyois, B.; Lobet, Y.; Hoet, P.; Bigaignon, G.; Bollen, A.; Godfroid, E. Simultaneous presence of different *Borrelia burgdorferi* genospecies in biological fluids of Lyme disease patients. *J. Clin. Microbiol.* **1995**, *33*, 602–608.
27. Rijpkema, S.G.; Molkenboer, M.J.; Schouls, L.M.; Jongejan, F.; Schellekens, J.F. Simultaneous detection and genotyping of three genomic groups of *Borrelia burgdorferi* sensu lato in Dutch *Ixodes ricinus* ticks by characterization of the amplified intergenic spacer region between 5S and 23S rRNA genes. *J. Clin. Microbiol.* **1995**, *33*, 3091–3095. [[PubMed](#)]
28. Ruzek, D.; Stastna, H.; Kopecky, J.; Golovljova, I.; Grubhoffer, L. Rapid subtyping of tick-borne encephalitis virus isolates using multiplex RT-PCR. *J. Virol. Methods* **2007**, *144*, 133–137. [[CrossRef](#)] [[PubMed](#)]
29. Schwaiger, M.; Cassinotti, P. Development of a quantitative real-time RT-PCR assay with internal control for the laboratory detection of tick borne encephalitis virus (TBEV) RNA. *J. Clin. Virol.* **2003**, *27*, 136–145. [[CrossRef](#)]
30. Metz, C.E. Basic principles of ROC analysis. *Semin. Nuclear Med.* **1978**, *8*, 283–298. [[CrossRef](#)]
31. Lalkhen, A.G.; McCluskey, A. Clinical tests: Sensitivity and specificity. *Contin. Educ. Anaesth. Crit. Care Pain* **2008**, *8*, 221–223. [[CrossRef](#)]
32. R Core Team. *R: A Language and Environment for Statistical Computing*; R Foundation for Statistical Computing: Vienna, Austria, 2016.
33. Heyman, P.; Cochez, C.; Hofhuis, A.; van der Giessen, J.; Sprong, H.; Porter, S.R.; Losson, B.; Saegerman, C.; Donoso-Mantke, O.; Niedrig, M.; et al. A clear and present danger: Tick-borne diseases in Europe. *Expert Rev. Anti Infect. Ther.* **2010**, *8*, 33–50. [[CrossRef](#)]
34. Erber, W.; Schmitt, H.-J. Self-reported tick-borne encephalitis (TBE) vaccination coverage in Europe: Results from a cross-sectional study. *Ticks Tick-Borne Dis.* **2018**, *9*, 768–777. [[CrossRef](#)] [[PubMed](#)]
35. Kollaritsch, H.; Chmelík, V.; Dontsenko, I.; Grzeszczuk, A.; Kondrusik, M.; Usonis, V.; Lakos, A. The current perspective on tick-borne encephalitis awareness and prevention in six Central and Eastern European countries: Report from a meeting of experts convened to discuss TBE in their region. *Vaccine* **2011**, *29*, 4556–4564. [[CrossRef](#)] [[PubMed](#)]
36. Kriz, B.; Maly, M.; Benes, C.; Daniel, M. Epidemiology of tick-borne encephalitis in the Czech Republic 1970–2008. *Vector Borne Zoonotic Dis.* **2012**, *12*, 994–999. [[CrossRef](#)]
37. Zeman, P.; Benes, C. Spatial distribution of a population at risk: An important factor for understanding the recent rise in tick-borne diseases (Lyme borreliosis and tick-borne encephalitis in the Czech Republic). *Ticks Tick-Borne Dis.* **2013**, *4*, 522–530. [[CrossRef](#)] [[PubMed](#)]
38. Zeman, P.; Benes, C. Peri-urbanisation, counter-urbanisation, and an extension of residential exposure to ticks: A clue to the trends in Lyme borreliosis incidence in the Czech Republic? *Ticks Tick-Borne Dis.* **2014**, *5*, 907–916. [[CrossRef](#)]
39. Beytout, J.; George, J.C.; Malaval, J.; Garnier, M.; Beytout, M.; Baranton, G.; Ferquel, E.; Postic, D. Lyme borreliosis incidence in two French departments: Correlation with infection of *Ixodes ricinus* ticks by *Borrelia burgdorferi* sensu lato. *Vector Borne Zoonotic Dis.* **2007**, *7*, 507–517. [[CrossRef](#)]

40. Zeman, P.; Januska, J. Epizootiologic background of dissimilar distribution of human cases of Lyme borreliosis and tick-borne encephalitis in a joint endemic area. *Comp. Immunol. Microbiol. Infect. Dis.* **1999**, *22*, 247–260. [[CrossRef](#)]
41. Danielova, V. Natural foci of tick-borne encephalitis and prerequisites for their existence. *Int. J. Med. Microbiol.* **2002**, *291* (Suppl. 33), 183–186. [[CrossRef](#)]
42. Norman, R.; Bowers, R.G.; Begon, M.; Hudson, P.J. Persistence of tick-borne virus in the presence of multiple host species: Tick reservoirs and parasite mediated competition. *J. Theor. Biol.* **1999**, *200*, 111–118. [[CrossRef](#)]
43. Hudson, P.J.; Rizzoli, A.; Rosà, R.; Chemini, C.; Jones, L.D.; Gould, E.A. Tick-borne encephalitis virus in northern Italy: Molecular analysis, relationships with density and seasonal dynamics of *Ixodes ricinus*. *Med. Vet. Entomol.* **2001**, *15*, 304–313. [[CrossRef](#)] [[PubMed](#)]
44. Ostfeld, R.S.; Glass, G.E.; Keesing, F. Spatial epidemiology: An emerging (or re-emerging) discipline. *Trends Ecol. Evol. (Amst.)* **2005**, *20*, 328–336. [[CrossRef](#)] [[PubMed](#)]
45. Stefanoff, P.; Rubikowska, B.; Bratkowski, J.; Ustrnul, Z.; Vanwambeke, S.O.; Rosinska, M. A predictive model has identified tick-borne encephalitis high-risk areas in regions where no cases were reported previously, Poland, 1999–2012. *Int. J. Environ. Res. Public Health* **2018**, *15*, 677. [[CrossRef](#)]
46. Suss, J. Epidemiology and ecology of TBE relevant to the production of effective vaccines. *Vaccine* **2003**, *21* (Suppl. 1), S19–S35. [[CrossRef](#)]
47. Imhoff, M.; Hagedorn, P.; Schulze, Y.; Hellenbrand, W.; Pfeffer, M.; Niedrig, M. Review: Sentinels of tick-borne encephalitis risk. *Ticks Tick-Borne Dis.* **2015**, *6*, 592–600. [[CrossRef](#)]
48. Kitron, U. Risk maps: Transmission and burden of vector-borne diseases. *Parasitol. Today (Regul. Ed.)* **2000**, *16*, 324–325. [[CrossRef](#)]
49. Alonso-Carne, J.; Garcia-Martin, A.; Estrada-Pena, A. Modelling the phenological relationships of questing immature *Ixodes ricinus* (Ixodidae) using temperature and NDVI data. *Zoonoses Public Health* **2015**, *63*, 40–52. [[CrossRef](#)]
50. Bisanzio, D.; Amore, G.; Ragagli, C.; Tomassone, L.; Bertolotti, L.; Mannelli, A. Temporal variations in the usefulness of normalized difference vegetation index as a predictor for *Ixodes ricinus* (Acari: Ixodidae) in a *Borrelia lusitaniae* focus in Tuscany, central Italy. *J. Med. Entomol.* **2008**, *45*, 547–555. [[CrossRef](#)] [[PubMed](#)]
51. Estrada-Pena, A. Distribution, abundance, and habitat preferences of *Ixodes ricinus* (Acari: Ixodidae) in northern Spain. *J. Med. Entomol.* **2001**, *38*, 361–370. [[CrossRef](#)] [[PubMed](#)]
52. Rizzoli, A.; Hauffe, H.C.; Tagliapietra, V.; Neteler, M.; Rosà, R. Forest structure and roe deer abundance predict tick-borne encephalitis risk in Italy. *PLoS ONE* **2009**, *4*, e4336. [[CrossRef](#)]
53. Stanek, G.; Reiter, M. The expanding Lyme Borrelia complex—clinical significance of genomic species? *Clin. Microbiol. Infect.* **2011**, *17*, 487–493. [[CrossRef](#)] [[PubMed](#)]
54. Rudenko, N.; Golovchenko, M.; Mokráček, A.; Piskunová, N.; Ruzek, D.; Mallatová, N.; Grubhoffer, L. Detection of *Borrelia bissettii* in cardiac valve tissue of a patient with endocarditis and aortic valve stenosis in the Czech Republic. *J. Clin. Microbiol.* **2008**, *46*, 3540–3543. [[CrossRef](#)] [[PubMed](#)]
55. McFadden, D. Quantitative Methods for Analyzing Travel Behaviour of Individuals: Some Recent Developments. In *Behavioural Travel Modelling*; Hensher, D., Stopher, P., Eds.; Croom Helm: London, UK, 1978; pp. 279–318.
56. Dobler, G.; Hufert, F.; Pfeffer, M.; Essbauer, S. Tick-Borne Encephalitis: From Microfocus to Human Disease. In *Progress in Parasitology*; Mehlhorn, H., Ed.; Parasitology Research Monographs; Springer: Berlin/Heidelberg, Germany, 2011; pp. 323–331. ISBN 978-3-642-21395-3.
57. Fabbro, S.D.; Gollino, S.; Zuliani, M.; Nazzi, F. Investigating the relationship between environmental factors and tick abundance in a small, highly heterogeneous region. *J. Vector Ecol.* **2015**, *40*, 107–116. [[CrossRef](#)] [[PubMed](#)]
58. Ferquel, E.; Garnier, M.; Marie, J.; Bernède-Bauduin, C.; Baranton, G.; Pérez-Eid, C.; Postic, D. Prevalence of *Borrelia burgdorferi* Sensu Lato and Anaplasmataceae Members in *Ixodes ricinus* Ticks in Alsace, a Focus of Lyme Borreliosis Endemicity in France. *Appl. Environ. Microbiol.* **2006**, *72*, 3074–3078. [[CrossRef](#)]
59. Morán Cadenas, F.; Rais, O.; Jouda, F.; Douet, V.; Humair, P.-F.; Moret, J.; Gern, L. Phenology of *Ixodes ricinus* and infection with *Borrelia burgdorferi* sensu lato along a north- and south-facing altitudinal gradient on Chaumont Mountain, Switzerland. *J. Med. Entomol.* **2007**, *44*, 683–693. [[CrossRef](#)] [[PubMed](#)]

60. Perez, D.; Kneubühler, Y.; Rais, O.; Gern, L. Seasonality of *Ixodes ricinus* ticks on vegetation and on rodents and *Borrelia burgdorferi* sensu lato genospecies diversity in two Lyme borreliosis–endemic areas in Switzerland. *Vector Borne Zoonotic Dis.* **2012**, *12*, 633–644. [[CrossRef](#)]
61. Perez, G.; Bastian, S.; Agoulon, A.; Bouju, A.; Durand, A.; Faille, F.; Lebert, I.; Rantier, Y.; Plantard, O.; Butet, A. Effect of landscape features on the relationship between *Ixodes ricinus* ticks and their small mammal hosts. *Parasit. Vector* **2016**, *9*, 20. [[CrossRef](#)] [[PubMed](#)]
62. Paul, R.E.L.; Cote, M.; Le Naour, E.; Bonnet, S.I. Environmental factors influencing tick densities over seven years in a French suburban forest. *Parasit. Vectors* **2016**, *9*, 309. [[CrossRef](#)] [[PubMed](#)]
63. Süss, J.; Schrader, C.; Abel, U.; Voigt, W.P.; Schosser, R. Annual and seasonal variation of tick-borne encephalitis virus (TBEV) prevalence in ticks in selected hot spot areas in Germany using a nRT-PCR: Results from 1997 and 1998. *Zent. Bakteriolog.* **1999**, *289*, 564–578. [[CrossRef](#)]



© 2019 by the authors. Licensee MDPI, Basel, Switzerland. This article is an open access article distributed under the terms and conditions of the Creative Commons Attribution (CC BY) license (<http://creativecommons.org/licenses/by/4.0/>).