

# Weight control is vital for patients with early-stage endometrial cancer or complex atypical hyperplasia who have received progestin therapy to spare fertility: a systematic review and meta-analysis

This article was published in the following Dove Press journal:  
*Cancer Management and Research*

Miaomiao Li\*  
Tao Guo\*  
Ran Cui  
Ying Feng  
Huimin Bai  
Zhenyu Zhang

Department of Obstetrics and  
Gynecology, Beijing Chaoyang Hospital,  
Capital Medical University, Beijing,  
People's Republic of China

\*These authors contributed equally to  
this work

**Objectives:** This study aimed to identify potential prognostic factors for patients with complex atypical hyperplasia (CAH) or early-stage endometrial cancer (EC) who received progestin therapy to spare fertility and, thus, improve the management of this patient group. **Materials and methods:** The PubMed, PMC, EMBASE, Web of Science, and Cochrane databases were searched for correlational studies published in English. Studies that evaluated the prognosis of patients with CAH or early-stage EC were pooled for a systematic review and meta-analysis.

**Results:** In total, 31 eligible studies, including 8 prospective and 23 retrospective studies involving 1099 patients, were included in this analysis. The most commonly used progestin agents were medroxyprogesterone acetate (MPA, 47.0%) and megestrol acetate (MA, 25.5%). The total complete response (CR) rate was 75.8% (833/1099), and the median time to CR with first-line progestin therapy was 6 months. In total, 294 (26.8%) patients who achieved CR became pregnant spontaneously (28 cases) or through assisted reproductive technology (127 cases). During the median follow-up of 39 months, 245 (22.3%) women developed recurrence. Only one patient (0.09%) died of the disease. The meta-analysis showed that compared to a BMI < 25 kg/m<sup>2</sup> and CAH, a body mass index (BMI) ≥ 25 kg/m<sup>2</sup> ( $P=0.0004$ , odds ratios (OR), 0.4; 95% confidence interval, 0.3–0.6) and EC ( $P=0.0000$ , OR, 0.3; 95% confidence interval, 0.2–0.6) were significantly associated with a higher likelihood of a CR. Patients with a BMI ≥ 25 kg/m<sup>2</sup> ( $P=0.0007$ , OR, 2.5; 95% confidence interval, 1.4–4.3), PCOS ( $P=0.0006$ , OR, 3.4; 95% confidence interval, 1.5–7.9), and EC ( $P=0.0344$ , OR, 2.8; 95% confidence interval, 1.4–5.3) had a significantly higher risk of recurrence.

**Conclusion:** In general, patients with CAH or early-stage EC who were treated with progesterone therapy had a favorable prognosis. However, the recurrence risk was not insignificant. Weight control is crucial for improving the clinical management of this patient group.

**Keywords:** endometrial cancer, complex atypical hyperplasia, fertility-sparing treatment, progestogens, systematic review

Correspondence: Huimin Bai;  
Zhenyu Zhang  
Department of Obstetrics and  
Gynecology, Beijing Chaoyang Hospital,  
Capital Medical University,  
No. 8, North Road of Workers Stadium,  
Chaoyang District, Beijing 100020,  
People's Republic of China  
Email [bhmdoctor@sina.com](mailto:bhmdoctor@sina.com);  
[zhenyuzhang2000@163.com](mailto:zhenyuzhang2000@163.com)

## Introduction

Endometrial cancer (EC) is the most common gynecologic malignancy in developed countries.<sup>1</sup> Although EC is typically thought to be a cancer affecting postmenopausal women, approximately 14% of cases occur in premenopausal women, and 5% of patients are aged 40 years or younger.<sup>2–4</sup> Its precursor, ie, complex atypical hyperplasia (CAH), affects an even larger proportion of premenopausal women.<sup>5</sup> The standard

treatment for EC includes extrafascial hysterectomy, bilateral salpingo-oophorectomy, and pelvic and para-aortic lymphadenectomy, if indicated. This treatment is usually unacceptable for young patients, who are usually diagnosed at an early stage with well-differentiated disease<sup>4,6</sup> and usually desire a fertility-sparing procedure.

Several previous studies have demonstrated that most “young” patients (premenopausal or aged 45 years or younger), who commonly have low-grade, minimally invasive tumors, have excellent clinical outcomes.<sup>7,8</sup> In addition, the risk of myometrial invasion or lymph node metastasis in young patients is quite low.<sup>9,10</sup> Thus, the cure rate among this patient group is very high. Fertility-sparing treatment to improve patients’ quality of life is an important consideration. The feasibility and safety of fertility-sparing treatment, mainly hormone therapy, in selected patients with early-stage EC or CAH have been demonstrated in multiple studies.<sup>11–13</sup> However, most studies were limited by a small sample size and/or a single-center design, and definitive conclusions could not be drawn. In contrast, several other researchers have demonstrated that fertility preservation may have a nonnegligible negative impact on patients’ survival or risk of relapse.<sup>14–16</sup> Consequently, the present systematic review was conducted to explore the potential prognostic factors of patients with early-stage EC and CAH who receive fertility preservation treatment. Reasonable suggestions and measures are proposed to improve the management of this patient group.

## Materials and methods

### Identification of literature

The PubMed, PMC, EMBASE, Web of Science, and Cochrane databases, where we considered those published before April 2018, were searched for correlational studies published in English. The search terms included “endometrial cancer”, “endometrial carcinoma”, “uterine cancer”, “uterine carcinoma”, “fertility-sparing”, “fertility preservation”, “fertility”, “preservation”, “conservative”, or “progestin”. The search strategy was based on medical subject headings and free text words in titles/abstracts, with connectives comprising “AND” or “OR.” We used this search strategy in PubMed, EMBASE, Web of science and the Cochrane databases, The full electronic search strategy for Pubmed is “((((endometrial cancer [Title/Abstract]) OR endometrial carcinoma [Title/Abstract]) OR uterine cancer [Title/Abstract]) OR uterine carcinoma [Title/Abstract])) AND (((fertility sparing [Title/Abstract]) OR conservative [Title/Abstract]) OR progestin [Title/Abstract]).

### Study selection and data extraction

The criteria for this systematic review were as follows: 1) patients staged based on the International Federation of Gynecology and Obstetrics (FIGO) staging system; 2) patients with early-stage EC (Stage IA, G1-G2) or CAH; 3) patients treated with progestin therapy to spare fertility; 4) available data regarding disease response and recurrence; and 5) full text and complete data available. The exclusion criteria were as follows: 1) review articles, case reports and meta-analyses; 2) patients with tumors invading the myometrium; 3) progestin use combined with surgical therapy; 4) studies that did not stratify the results to distinguish between hyperplasia with or without complex atypia; 5) non-English language; and 6) incomplete data.

The literature was reviewed by two different readers independently (Miaomiao Li and Tao Guo). Disagreements were resolved by the arbitration of a third reviewer (Ran Cui). The Methodological Index for Non-Randomized Studies (MINORS) was implemented to assess the quality of the nonrandomized studies (Figure 2).<sup>17</sup> The demographic data, including age, body mass index (BMI), diagnosis, medical comorbidities, type of hormonal agent used, patient response, and side effects of drug therapy, were collected. Information about the oncological and reproductive outcomes, including recurrence, survival, pregnancy rate and live birth rates, was also recorded. BMI was calculated as weight in kilograms divided by the square of height in meters. Complete response (CR) was defined as no microscopic evidence of either hyperplasia or cancer cells in endometrial histopathology. Partial response (PR) was defined as regression of CAH or EC to simple or complex hyperplasia without atypia. Stable disease (SD) was defined as the persistence of pretreatment lesions. The overall survival (OS) times were calculated in months from the date of the medical treatment to the death of the patients; survivors at the final follow-up visit were censored.

### Statistical analyses

For calculations of median age and follow up times, individual data were used if the study reported these values. Otherwise, each subject in the study was assumed to be the reported mean or median value for the respective study. For the studies which did not provide any information, they were not included in the overall median estimates. Forest plots were created for each factor to show the pooled odds ratios (OR) with 95% confidence intervals (CI). The inconsistency index ( $I^2$ ) value across studies was used to evaluate

heterogeneity. If the  $I^2$  statistic was  $>50\%$ , a random-effects model was used. Otherwise, a fixed-effects model was used ( $I^2 < 50\%$ ). The risk factors were compared with the Pearson chi-square test. The tests were two-sided. A  $P$ -value  $< 0.05$  was considered significant. All statistical analyses were performed using Review Manager 5.3 (The Cochrane Collaboration, Software Update, Oxford, UK), SPSS software version 19 (Version X; IBM, Armonk, NY, USA) and Stata version 12.0 (StataCorp, College Station, TX, USA). Funnel plots were used to assess publication bias, which was quantified using Egger's linear regression test.

## Ethics statement

This article does not contain any studies with human participants performed by any of the authors.

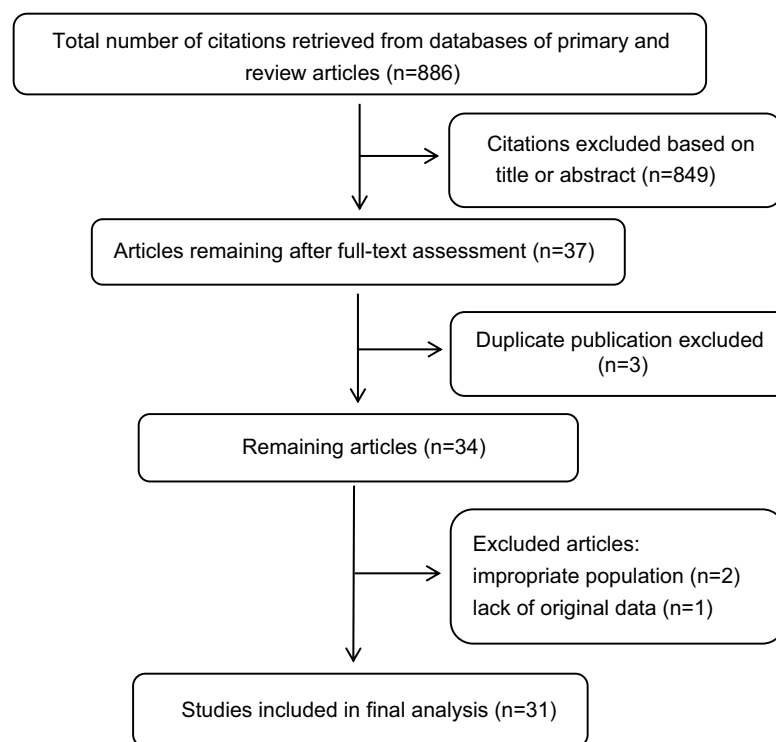
## Results

In total, 886 citations were retrieved from the databases by searching for the terms. Eight hundred forty-nine articles with irrelevant information based on reviews of the titles and abstracts were excluded. Three duplicated articles were also excluded. According to the inclusion criteria, three articles involving postmenopausal women (two articles) or lacking original data (one article) were further excluded. Thus, in total, thirty-one eligible studies, including eight

prospective and twenty-three retrospective studies, involving 1099 patients were included in this analysis (Figure 1). The clinicopathological characteristics and oncologic and reproductive outcomes<sup>11–14,16–42</sup> of the patients are shown in Tables 1 and 2, respectively.

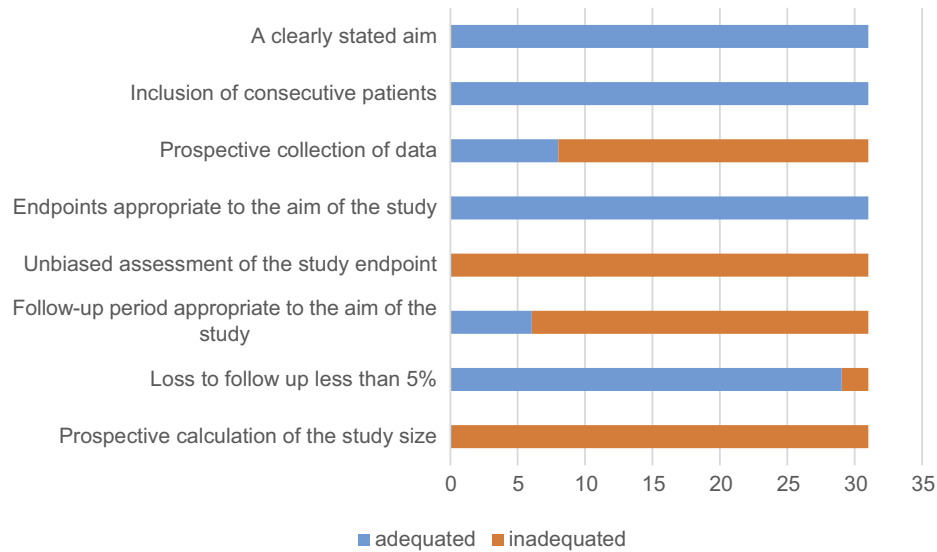
The average age of the patients at diagnosis was 32.8 (range: 19–45) years. Nulliparous women accounted for 87.4% of the sample. The average BMI was 24.9 (range: 11.4–70)  $\text{kg/m}^2$ . Diabetes mellitus and abnormal glucose metabolism were identified in sixteen (1.5%) and twenty-five (2.3%) patients, respectively. Three patients had hypertension; in one case, hypertension was related to renal disease. Polycystic ovarian syndrome (PCOS) was identified in 148 (13.5%) patients. Nine (0.8%) patients had a family history of Lynch syndrome. CAH was identified in 316 (28.8%) patients. The remaining 783 (71.2%) patients had stage IA EC.

The most commonly used progestin agents were medroxyprogesterone acetate (MPA, 47.0%) and megestrol acetate (MA, 25.5%). The most common doses were 400–600 mg/d for MPA and 160–240 mg/d for MA. Other agents, including levonorgestrel intrauterine system, natural progesterone, hydroxyprogesterone caproate, norethisterone acetate, and gonadotropin-releasing hormone agonist, were also used either as a single agent or in combination. The most common adverse effects included weight gain (3.6%) and liver



**Figure 1** In total, thirty-one eligible studies, including eight prospective and twenty-three retrospective studies, involving 1099 patients were included in this analysis.

### Quality assessment of the studies



**Figure 2** The quality of the studies according to the MINORS checklist Figure 2. The appropriate follow-up period was defined as at least five years.

dysfunction (1.1%), followed by nausea (0.5%), diarrhea (0.4%), breast pain (0.5%), premature ovarian failure (0.09%), and antithrombin III and fibrinogen irregularities (0.09%). Grade 3–4 adverse effects associated with progestin treatment were identified in four patients (0.4%) and included body weight gain (two cases), liver dysfunction (one case), and premature ovarian failure (one case) No patient developed thromboembolism. The scheduled progesterone treatment was not delayed due to these side effects. No treatment-related deaths were identified.

All patients were closely followed during and after progesterone therapy. The median follow-up time was 39 months (range: 1–412 months). Endometrial resampling through endometrial curettage or endometrial biopsy was usually performed every 3 months (31.4%), every 3 to 6 months (19.4%) or every 6 months (6.4%). In three studies,<sup>14,16,19</sup> the endometrial evaluations were performed more frequently (every 2 months after the initiation of hormonal therapy). CR was achieved in 806 (73.3%) patients with first-line progesterone therapy. Twenty-seven patients (2.5%) achieved CR with continued progestin treatment. Thus, the total CR rate was 75.8%, and the median time to CR with first-line progestin therapy was 6 months (range: 1–74 months). PR or SD was achieved in 210 (19.1%) patients. Twelve (1.1%) patients had progressive disease (PD) during hormonal therapy.

After achieving CR. There were 197 patients accepted fertility treatment, 65 patients accepted estrogen-progestin therapy, such as taking oral contraceptives, the 192 patients

did not receive any treatment, just follow up regularly. There were 71 patients continued to receive progestins with treatment dose until pregnancy. The other 61 patients received low-dose cyclic progestin, such as dydrogesterone and progestin-releasing intrauterine device.

In total, 294 (26.8%) patients who achieved CR became pregnant spontaneously (28 cases) or with assisted reproductive technology (127 cases). The median time to achieve pregnancy was 12.5 months (range: 1–69.7 months). Forty-nine (4.5%) pregnant patients developed spontaneous abortion. In total, 225 (20.5%) pregnant patients had live births. Most (73.8%) pregnant women gave birth at full term.

At the final contact, in total, 245 (22.3%) women had developed recurrence. The median time to recurrence was 20 (range: 1–358) months. Salvage progestin treatment was administered in 101 (41.2%) patients with recurrence, and nearly half (49.5%) of these patients achieved CR again. Hysterectomy with or without bilateral salpingo-oophorectomy was performed in patients with recurrent disease (eighty-three cases), PR or SD (137 cases), and PD (twelve cases). Extrauterine lesions were identified in eleven patients (1.0%) in the ovary (eight cases), fallopian tube (one case), uterine serosa (one case), bone and lymph gland (one case). In the entire series, in total, two deaths were described.<sup>16,26</sup> One patient died of simultaneous peritoneal carcinoma and EC. Only one patient (0.09%) died of the disease; she developed bone metastasis and lymphadenopathy and died of the disease 14 months after the initial therapy.

**Table 1** The characteristics of included studies

Study	Study design	Age (years)	BMI (kg/m <sup>2</sup> )	Pathological type		Nulliparous	Medical co-morbidity	Intervention
				CAH	EC			
Tamauchi 2018 <sup>19</sup>	Retrospective	34 (19–45)	23.3 (18.1–45.0)	30	9	37	UK	MPA
Fukui 2017 <sup>20</sup>	Retrospective	33 (19–39)	21.5 (17.7–34.9)	None	35	34	UK	MPA
Hwang 2017 <sup>21</sup>	Retrospective	30.4 (25–39)	24.0 (18.5–30.5)	None	5	5	No	MPA+LNG-IUS
Park 2017 <sup>22</sup>	Retrospective	32	25.5	None	154	145	Infertility: n=52, PCOS: n=31; Other medical disease: n=23	MA: n=51; MPA: n=103
Kim 2017 <sup>23</sup>	Retrospective	36 (25–41)	32.9 (21–70)	29	21	44	DM: n=3; previous malignancy tumor: n=4	MA: n=24; MPA: n=20; LNG-IUS: n=2 Micronized progesterone: n=2
Chen 2016 <sup>24</sup>	Retrospective	32 (21–41)	UK	16	37	48	PCOS: n=18; DM: n=6; Family history of cancer: n=5	MA: n=21 (plus GNRHa: n=9, plus LNG-IUS: n=2); MPA: n=32
Baek 2016 <sup>25</sup>	Retrospective	33 (20–41)	23.1 (16.6–39.5)	18	13	14	PCOS: n=5	MA: n=25; MPA: n=6
Zhou 2015 <sup>26</sup>	Retrospective	30.4 (20–40)	26.7 (17.6–36.0)	13	19	23	PCOS: n=6; Thyroid disease: n=3; High HbA1c: n=9	MA or MPA (metformin with high HbA1c)
Pronin 2015 <sup>14</sup>	Prospective	33 (28–42)	UK	38	32	UK	UK	Mirena: n=38 Mirena+GnRH: n=32
Mitsubishi 2015 <sup>27</sup>	Prospective	33 (26–42)	30.9 (18.8–52.7)	17	19	UK	PCOS: n=17; Abnormal glucose metabolism: n=16	MPA+Aspirin+Metformin
Simpson 2014 <sup>28</sup>	Retrospective	36.5 (26–44)	25 (20–66)	19	25	31	DM: n=5; Family history Lynch syndrome: n=7	UK
Kudesia 2014 <sup>13</sup>	Retrospective	38.5	CAH:28.6 EC:26.8	13	10	21	UK	MA: n=9; LNG-IUS: n=6; LNG-IUS+Oral progestin: n=8

(Continued)

Table 1 (Continued).

Study	Study design	Age (years)	BMI (kg/m <sup>2</sup> )	Pathological type		Nulliparous	Medical co-morbidity	Intervention
				CAH	EC			
Gonthier 2014 <sup>29</sup>	Retrospective	34.0 (23.0–40.0)	26.9 (18–44)	23	17	31	PCOS: n=13; First degree with HNPCC associated cancer: n=2	oral progestin: n=28; GnRHa: n=5; LNG-IUS: n=5
Park 2013 <sup>12</sup>	Retrospective	31.3 (21–40)	24.98 (15.06–38.20)	None	148	139	PCOS: n=23; Other medical disease: n=20	MA: n=57; MPA: n=91
Jafari 2013 <sup>30</sup>	Prospective	30 (24–35)	UK	None	8	6	PCOS: n=3	MA
Koskas 2012 <sup>31</sup>	Retrospective	28–40	UK	14	8	19	No family history of HNPCC	MA: n=5; MPA: n=4; NA: n=7; CA: n=3; Lynestrenol: n=3
Fujiwara 2012 <sup>15</sup>	Retrospective	31 (21–42)	23.3 (15–38)	None	45	UK	UK	MPA
Ricciardi 2012 <sup>32</sup>	Retrospective	32 (25–40)	UK	13	1	11	PCOS or infertility: n=13	MA or MPA
Perri 2011 <sup>33</sup>	Retrospective	33.4 (24–43)	UK	None	27	UK	UK	MA: n=24; NA: n=1; Hydroxyprogesterone caproate: n=2
Park 2011 <sup>34</sup>	Retrospective	30.0 (21–38)	22.3 (17.0–33.0)	None	14	12	PCOS: n=6	MA: n=12; MPA: n=2
Kim 2011 <sup>18</sup>	Retrospective	38.4 (33–41)	20.3 (11.4–36.7)	None	5	5	DM: n=1	MPA+Mirena
Minig 2010 <sup>35</sup>	Prospective	34 (22–40)	21 (17–41)	20	14	29	DM: n=1; HP: n=2; PCOS: n=4	LNG-IUS+GnRHa
Yu 2009 <sup>36</sup>	Retrospective	CAH:29.9 EC:25.1	UK	17	8	UK	UK	MPA

(Continued)

Table 1 (Continued).

Study	Study design	Age (years)	BMI (kg/m <sup>2</sup> )	Pathological type		Nulliparous	Medical co-morbidity	Intervention
				CAH	EC			
Han 2009 <sup>37</sup>	Retrospective	32 (26–37)	UK	3	7	9	PCOS: n=8 Infertility: n=6	MA: n=7; MPA: n=2; Provera: n=1
Hahn 2009 <sup>38</sup>	Retrospective	31 (21–43)	UK	None	35	15	Infertility: 15	MA: n=8; MPA: n=20; MPA+MA: n=7
Signorelli 2008 <sup>39</sup>	Prospective	32 (21–40)	27.7 (19–41)	10	11	UK	PCOS: n=5; Infertility: n=8; Hyperprolactinaemia: n=2.	Natural progestin
Yamazawa 2007 <sup>40</sup>	Prospective	36 (28–40)	UK	None	9	9	Infertility: n=3	MPA
Ushijima 2007 <sup>17</sup>	Prospective	31.7 (22–39)	22.8 (16–32.7)	17	28	45	PCOS: n=7	MPA+Aspirin
Yang 2005 <sup>41</sup>	Prospective	33 (27–39)	21.9 (14.3–26.0)	None	6	6	Infertility: n=4	MA
Yahata 2005 <sup>42</sup>	Retrospective	31.9 (26–37)	25.4 (18–35)	None	8	8		MPA
Gotlieb 2003 <sup>43</sup>	Retrospective	31 (23–40)	UK	None	11	13	Infertility: n=6	MA: n=7; MPA: n=1; Others: n=3

**Abbreviations:** BMI, body mass index; CA, chlormadinone acetate; CAH, complex atypical hyperplasia; DM, diabetes mellitus; EC, endometrial cancer; GnRH<sub>a</sub>, gonadotropin-releasing hormone agonist; HNPCC, hereditary non-polyposis colorectal cancer; LNG-IUS, levonorgestrel intrauterine system; MA, megestrol acetate; MPA, medroxyprogesterone acetate; NA, nomegestrol acetate; PCOS, polycystic ovarian syndrome; UK, unknown.

**Table 2** Reproductive and oncological outcomes of CAH/early-stage EC patients who treated with fertility-preservation procedure

Study	CR	Time of achieving CR (m)	PR or SD	PD	Recurrence	Time to recurrence (m)	Pregnancy	Gestational mode	Live birth	Hysterectomy	Follow-up time(m)
Tamauchi 2018 <sup>19</sup>	CAH: n=28 EC: n=8	CAH:26 (10–63) EC:40 (26–53)	3	UK	CAH: n=14 EC: n=7	CAH: 72 (10–283) EC: 50 (24–272)	14	IVF: n=10; Spontaneous: n=4	7 3	3	52 (16–128)
Fukui 2017 <sup>20</sup>	25	UK	10	0	8	UK	12	UK	11	15	89 (12–193)
Hwang 2017 <sup>21</sup>	3	11.0 (6–18)	2	0	1	23	1	IVF	0	2	44.4 (12–71)
Park 2017 <sup>22</sup>	111	4.5 (0.8–55.5)	UK	UK	43	57 (6–194)	45	UK	35	UK	57 (6–194)
Kim 2017 <sup>23</sup>	22	UK	28	0	3	UK	10	IVF: n=7; Others: n=3	5	27	23 (3–118)
Chen 2016 <sup>24</sup>	CAH: n=12 EC: n=27	6 (3–24)	10	4	CAH: n=3 EC: n=7	28.5 (4–56)	17	IVF	11	20	54 (4–148)
Baek 2016 <sup>25</sup>	CAH: n=16 EC: n=7	CAH:3 (1–22) EC 3 (2–9)	8	0	CAH: n=2 EC: n=4	8 (7–11) 2 (4–18)	2	ART	2	8	11.5 (3–29)
Zhou 2015 <sup>26</sup>	27	6.2 (0.8–41.5)	5	0	9	8.5 (3–17.3)	9	ART	5	2	32.2 (10–92)
Pronin 2015 <sup>14</sup>	CAH: n=35 EC: n=23	UK	9	0	CAH: n=1 EC: n=2	6–12	8	Spontaneous	8	9	17 (1–45)
Mitsuhashi 2015 <sup>27</sup>	29	6–9	5	2	3	38 (1–66)	8	IVF	6	4	38 (9–66)
Simpson 2014 <sup>28</sup>	24	5.7 (2–24)	20	0	13	42	5	IVF: n=4; Spontaneous: n=1	2	21	39 (5–128)
Kudesia 2014 <sup>13</sup>	CAH: n=5 EC: n=7	13 (3–74)	9	0	UK	UK	4	IVF	4	7	13 (3–74)
Gonthier 2014 <sup>29</sup>	29	2–6	UK	UK	6	3–37	14	ART: n=9; Spontaneous: n=5	10	UK	23.4 (6–130)
Park 2013 <sup>12</sup>	115	4.5 (2–13.8)	33	0	35	15 (4–61)	44	UK	44	13	66 (14–194)
Jafari 2013 <sup>30</sup>	7	6 (3–9)	1	0	3	14 (3–21)	3	IVF: n=2	2	3	34.5 (11–72)
Koskas 2012 <sup>31</sup>	CAH: n=12 EC: n=5	4.4 1(3–6)	4	1	3	15.3 (6–31)	8	UK	8	6	39 (14–86)

(Continued)



Table 2 (Continued).

Study	CR	Time of achieving CR (m)	PR or SD	PD	Recurrence	Time to recurrence (m)	Pregnancy	Gestational mode	Live birth	Hysterectomy	Follow-up time(m)
Fujiwara 2012 <sup>15</sup>	36	6.2 (3.3–17.5)	UK	UK	17	12 (7–84)	UK	UK	UK	UK	66 (11–251)
Ricciardi 2012 <sup>32</sup>	11	UK	3	0	UK	UK	4	IVF	4	3	UK
Perri 2011 <sup>33</sup>	24	5 (1–17)	3	0	9	39.9 (1.8–84)	14	IVF: n=9; Spontaneous: n=5	10	10	57.4 (7.8–412)
Park 2011 <sup>34</sup>	13	6 (3–15)	1	0	2	7–36	4	ART: n=4	4	1	47.3 (18–135)
Kim 2011 <sup>18</sup>	4	5 (3–12)	1	0	0	—	1	IVF	1	0	10.2(6–16)
Ming 2010 <sup>35</sup>	CAH: n=19 EC: n=8	6–12	2	5	CAH: n=4 EC: n=2	36 (16–62)	9	UK	7	13	29 (4–102)
Yu 2009 <sup>36</sup>	19	CAH: 7.3(3–11) EC: 6.4 (3–10)	6	0	4	CAH: 30 EC: 11 (6–16)	4	IVF: n=3; Spontaneous: n=1	4	6	CAH: 34.6 (7–114) EC: 31.8 (5–90)
Han 2009 <sup>37</sup>	10	5.2 (3–18)	0	0	1	UK	9	ART	6	1	46.8 (13–75)
Hahn 2009 <sup>38</sup>	22	9 (2–12)	13	0	9	12 (8–48)	10	ART: n=7; Spontaneous: n=3	8	16	39 (5–108)
Signorelli 2008 <sup>39</sup>	3	4 (3–9)	18	0	UK	UK	9	UK	UK	9	98 (35–176)
Yamazawa 2007 <sup>40</sup>	8	5.3 (3–9)	0	0	2	16 (10–22)	4	ART: n=4	3	2	39 (24–69)
Ushijima 2007 <sup>17</sup>	CAH: n=16 GIEC: n=14	12.5 (8–26)	13	0	14	CAH: 44.2 EC: 34.6	11	ART: n=10; Spontaneous: n=1	7	18	39 (5–128)
Yang 2005 <sup>41</sup>	4	3.5 (2–5)	2	0	2	4.5	2	UK	2	4	48.8 (14–132)
Yahata 2005 <sup>42</sup>	7	8.7 (4–14)	1	0	7	11.6 (4–33)	3	ART: n=3	3	5	76.5 (21–118)
Gotlieb 2003 <sup>42</sup>	11	3.5 (0–9)	0	0	5	40 (19–358)	6	UK	3	4	82 (6–358)

Abbreviations: ART, assisted reproductive technology; IVF, in-vitro fertilization; UK, unknown.

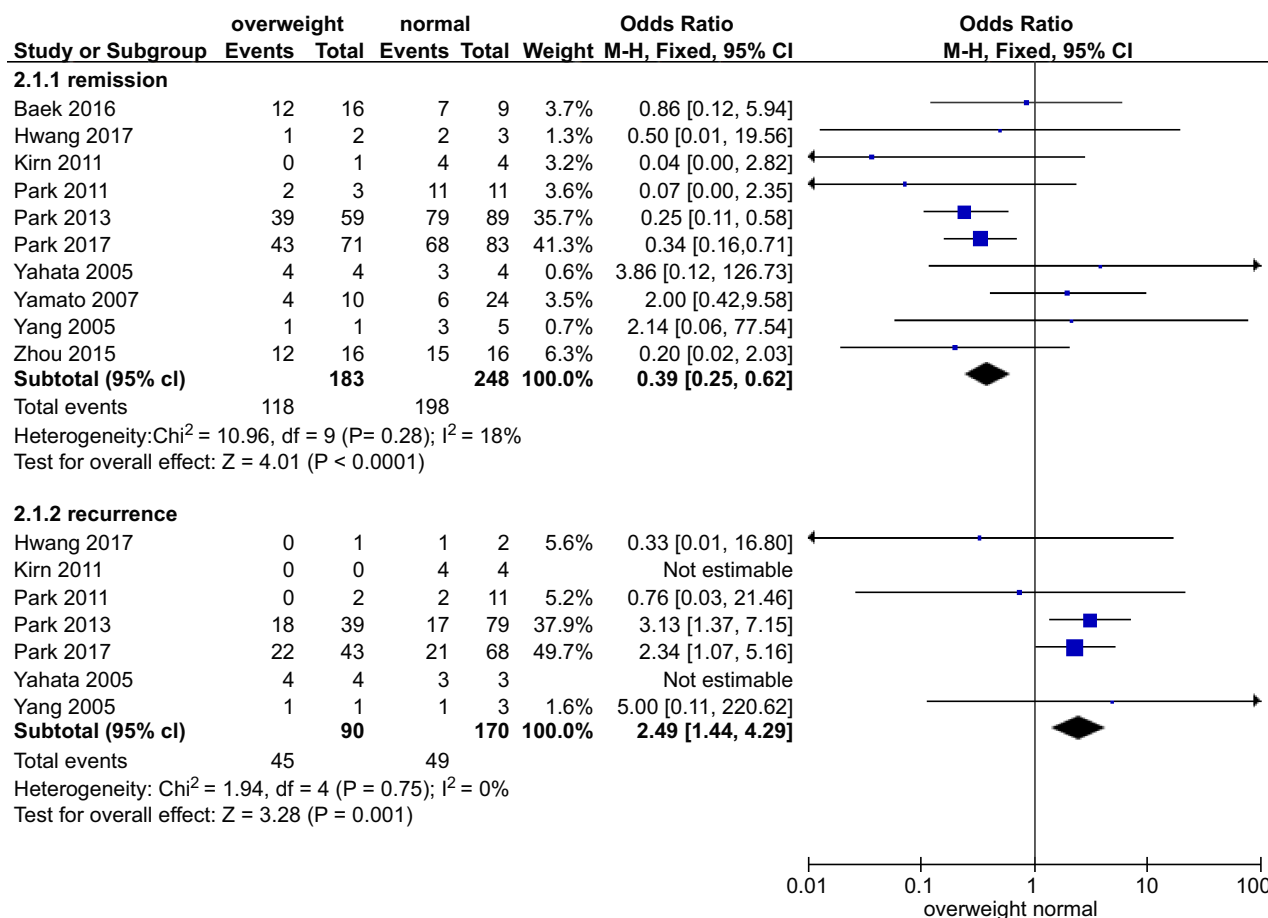
The potential predictors affecting the patients' response to progestin therapy, including age, BMI, PCOS, type of hormone agent, and histology type (CAH or EC), were pooled for a meta-analysis (Figure 3). No substantial heterogeneity was observed in each analysis. The  $I^2$  values of each analysis were all less than 50% (6%, 18%, 0%, 0%, and 31%). Thus, a fixed-effects model was applied. According to the analysis, compared with a BMI<25 kg/m<sup>2</sup> and CAH ( $P=0.0000$ , OR, 0.3; 95% confidence interval, 0.2–0.6), a BMI≥25 kg/m<sup>2</sup> ( $P=0.0004$ , OR, 0.4; 95% confidence interval, 0.3–0.6) and EC were significantly associated with a higher likelihood of achieving CR. In contrast, age ( $P=0.3119$ ), PCOS ( $P=0.2259$ ), and hormonal agents ( $P=0.3265$ ) had no impact on CR (Table 3).

The potential risk factors associated with recurrence, including age, BMI, PCOS, type of hormone agent, and

histology type (CAH or EC), were also pooled for a meta-analysis Figure 3. There was no substantial heterogeneity in any analysis. The  $I^2$  values in each analysis were all equal to zero. Thus, a fixed-effects model was applied. Patients with a BMI≥25 kg/m<sup>2</sup> ( $P=0.0007$ , OR, 2.5; 95% confidence interval, 1.4–4.3), PCOS ( $P=0.0006$ , OR, 3.4; 95% confidence interval, 1.5–7.9), and EC ( $P=0.0344$ , OR, 2.8; 95% confidence interval, 1.4–5.3) had a significantly higher risk of developing recurrence. Age ( $P=0.5678$ ) and type of hormonal agent ( $P=0.0639$ ) were not identified as risk factors of recurrence (Table 3).

### Publication bias

According to assessments based on Egger's test, there was no significant publication bias in the articles included in meta-analysis. The funnel diagrams with insignificant asymmetry are shown in Figure 4.



**Figure 3** The potential predictors of patients' responses to progestin therapy and recurrence Figure 3, including age, BMI, PCOS, type of hormonal agent used, and histology type (CAH or EC), were pooled for a meta-analysis. No substantial heterogeneity was found in any analysis of the patients' response to progestin therapy. The  $I^2$  values in each analysis were all less than 50% (6%, 18%, 0%, 0%, and 31%). There was no substantial heterogeneity in any analysis of recurrence. The  $I^2$  values in all analyses were equal to zero.

**Abbreviation:** PCOS, polycystic ovarian syndrome.

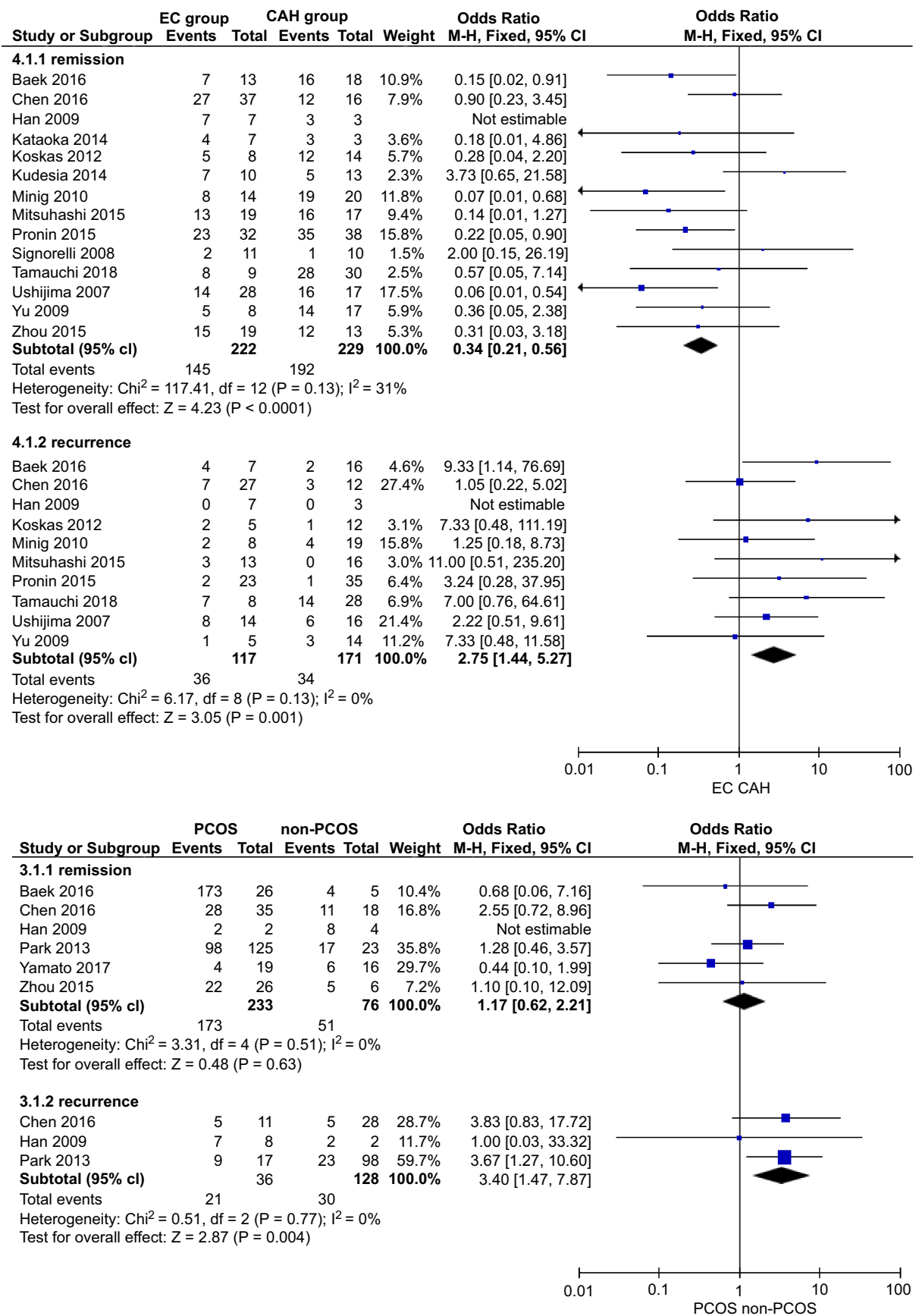


Figure 3 (Continued).

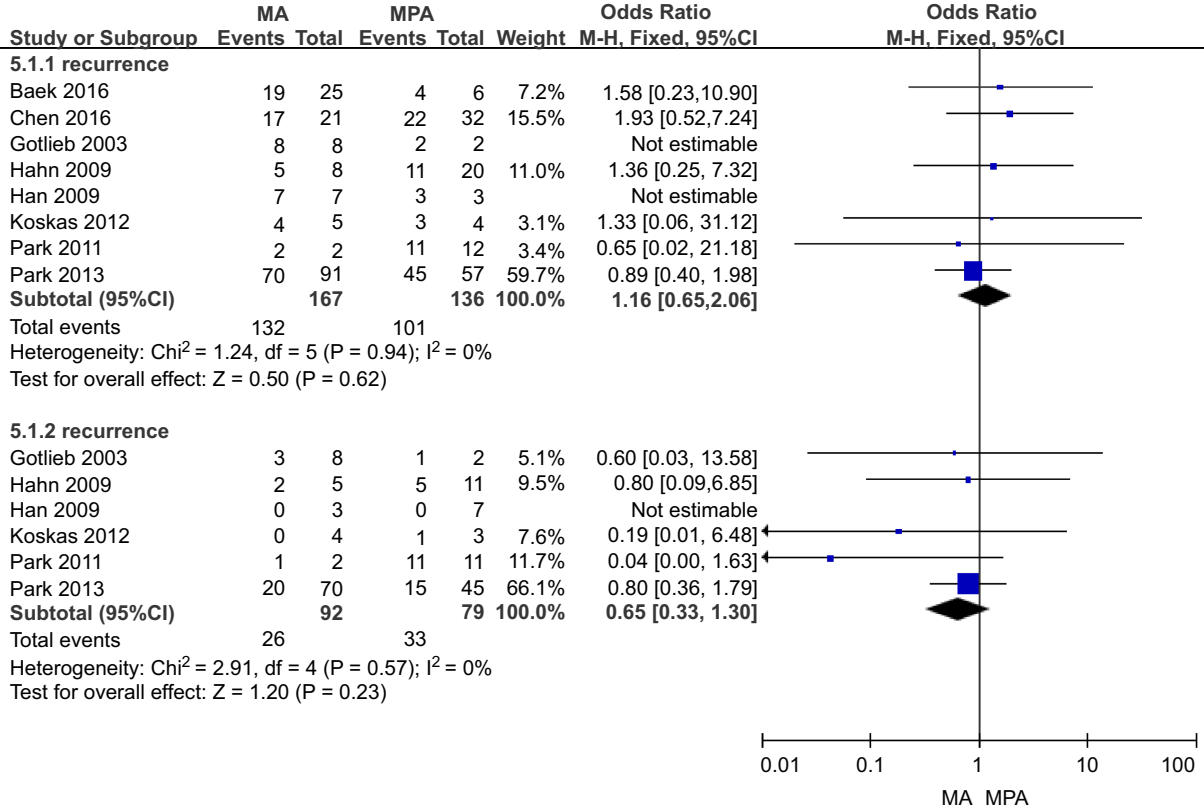
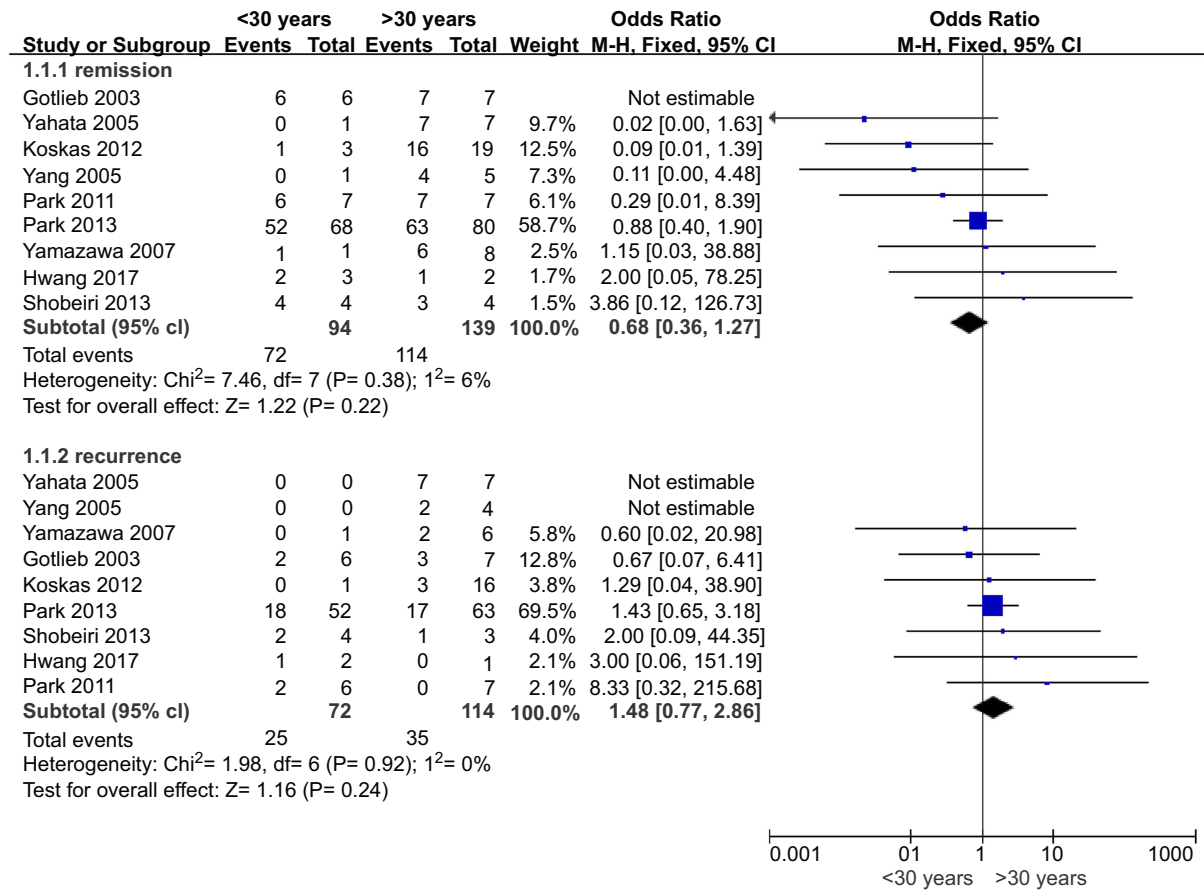


Figure 3 (Continued).

**Table 3** Risk factors and risk of bias for complete response and recurrence of CAH/ EC patients

Risk factor	Complete Response		P (Egger's test)	Recurrence		Recurrence rate	P value <sup>a</sup>	P (Egger's test)
	Yes	No		Yes	No			
Age	≤30 years	22	0.301	25	47	34.7%	0.5678	0.715
	>30 years	114		35	79			
BMI	Normal	50	0.533	49	121	28.8%	0.0007	0.311
	Overweight	118		45	45			
PCOS	Yes	173	0.526	21	15	58.3%	0.0006	0.282
	No	51		30	98			
Hormonal agents	MA	132	0.531	26	66	28.3%	0.0639	0.152
	MPA	101		33	46			
Histology type	CAH	192	0.443	34	137	19.9%	0.0344	0.133
	EC	145		36	81			

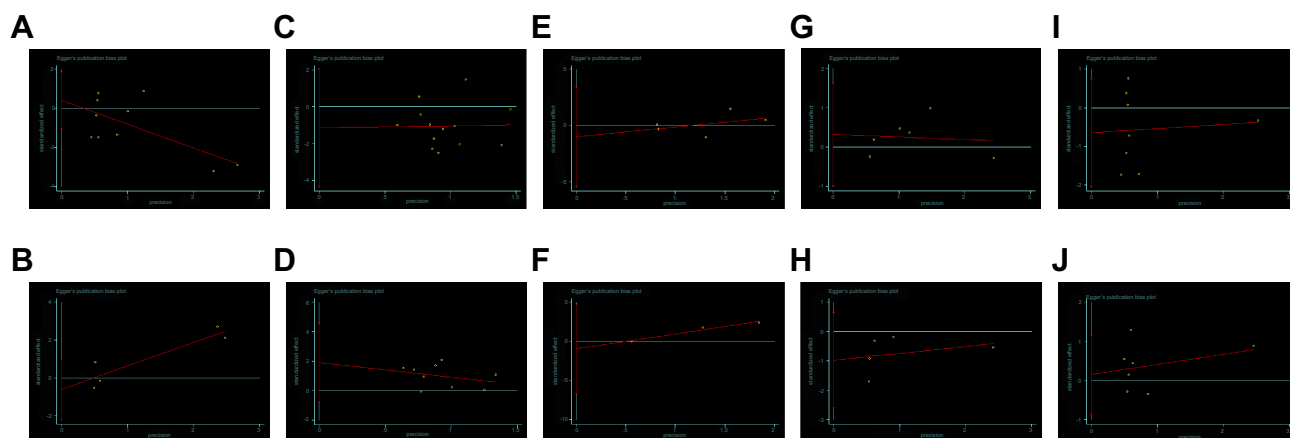
Notes: <sup>a</sup>Pearson chi-square test.

Abbreviation: PCOS, polycystic ovarian syndrome.

## Discussion

As women increasingly choose to delay childbearing, young women diagnosed with CAH or well-differentiated early-stage EC often wish to maintain fertility. In general, patients who undergo fertility-sparing treatment with progestins have a good prognosis. In this analysis, the CR rate was 75.8%, and the median time to CR with first-line progestin therapy was 6 (range: 1–74) months. The OS rate was as high as 99.8%. Studies<sup>43–46</sup> in the literature have also demonstrated that progestin treatment is associated with a high response rate and a favorable clinical outcome. However, the recurrence risk associated with progestin treatment is not insignificant. Based on our data, the recurrence rate is 30.4%, which is within the range of rates reported in the literature (30.7%–50%).<sup>47–49</sup> Therefore, exploring the prognostic predictors in CAH/EC patients who received fertility preservation is important for improving the clinical management of this patient group.

Obesity has been noted to have a linear relationship with all cancer types.<sup>50,51</sup> An increased BMI and obesity are strongly associated with the incidence and mortality of EC.<sup>50</sup> Young patients with CAH or EC frequently have a history of obesity, which is usually associated with prolonged, unopposed estrogen exposure, accounting for the increased risk factor of EC in obese women.<sup>52</sup> This analysis showed that overweight or obese patients had a higher likelihood of recurrence and a lower likelihood of complete remission with progestin treatment, which is consistent with Koskas's study.<sup>15</sup> In the normal premenstrual endometrium, progesterone counters estrogen-driven proliferation and induces glandular differentiation and decidualization in the endometrial stroma.<sup>52</sup> In the absence of progestin, the endometrium continuously proliferates, and the risk of EC increases. Therefore, obese patients may have prolonged estrogen exposure after progestin treatment, likely increasing the probability of disease recurrence. Courneya et.al<sup>53</sup> found a general negative linear association between BMI and quality of life (QoL) in EC survivors. The QoL became progressively worse as the BMI increased from a normal weight to very severe obesity. Arem et.al<sup>54</sup> evaluated the relationship between obesity and EC survival based on twelve studies, four of which suggested that obesity is associated with worse survival among women with EC (risk range from 1.86–2.76) with a BMI $\geq$ 40 kg/m<sup>2</sup> compared with nonobese weight women. We demonstrated that weight control had a positive effect on the prognosis of obese patients. Weight control is also vital for patients who receive progestin treatment.



**Figure 4** the Egger's test of each outcome of factor in the meta-analysis. **(A)** Egger's test of the risk of obesity in disease complete response. **(B)** Egger's test of the risk of obesity in disease recurrence. **(C)** Egger's test of the risk of histology type in disease complete response. **(D)** Egger's test of the risk of histology type in disease recurrence. **(E)** Egger's test of the risk of polycystic ovarian syndrome in disease complete response. **(F)** Egger's test of the risk of polycystic ovarian syndrome in disease recurrence. **(G)** Egger's test of the risk of hormone type in disease complete response. **(H)** Egger's test of the risk of hormone type in disease recurrence. **(I)** Egger's test of the risk of age in disease complete response. **(J)** Egger's test of the risk of age in disease recurrence.

Obesity is present in approximately 30–70% of women with PCOS.<sup>55</sup> Women with PCOS have a three- to five-fold increased risk of EC.<sup>56</sup> Patients with PCOS exhibit hyperandrogenism, chronic anovulation, and infertility.<sup>57</sup> Chronic anovulation is a major risk factor for premenopausal EC and/or CAH.<sup>58</sup> The results of this study indicate that patients with PCOS are more likely to develop relapse. Weight control is beneficial for PCOS patients to increase ovulation and decrease the risk of recurrence.

No progesterone treatment regimen has been established. MPA and MA are the most commonly used progestins in fertility-sparing treatment as described in this analysis. The potency of these two drugs (in terms of endometrial response) has been reported to be similar.<sup>59,60</sup> The relative bioavailability of MA via the oral pathway is significantly higher than that of MPA.<sup>61</sup> A meta-analysis also showed<sup>15</sup> that the use of MA was associated with a higher response probability. The adverse effects associated with progestins were moderated, and no treatment-related deaths were identified in our review. Progestin treatment was well tolerated. However, its optimal regimen and duration require further evaluation.

The pregnancy and live birth rates in patients with EC after fertility-preserving treatment are also clinical concerns. Gallos et.al<sup>43</sup> described live birth rates of 28% in EC patients and 26.3% in CAH patients, which are slightly higher than the rates (20.5%) found in this analysis. Assisted reproduction treatment had a higher success rate than spontaneous conception (39.4% VS 14.9%). A significant proportion of EC and CAH patients are obese

and have anovulatory cycles with a history of infertility.<sup>62</sup> The implementation of in vitro fertilization techniques not only increases the chance of conception but may also decrease the time to conception.<sup>63</sup>

After completing pregnancy, patients should be followed closely. The tissue biopsy methods used to diagnose endometrial lesions include endometrial aspiration, dilatation and curettage (D & C), and hysteroscopic biopsy. Endometrial aspiration biopsy is an easy, safe and cost-effective method that has been reported to be comparable to D&C in the diagnosis of endometrial hyperplasia and EC.<sup>64,65</sup> However, Kim and colleagues<sup>66</sup> found that endometrial aspiration biopsy had a lower diagnostic accuracy (diagnostic concordance, 39.3%) than D&C. Gunderson et.al<sup>43</sup> suggested recommending hysterectomy for patients who had given birth or had persistent infertility to reduce the recurrence risk. EC patients who desire fertility preservation should be fully informed of the risk of recurrence and followed closely.

There are certain limitations in our review, First, most included studies were retrospective. No randomized control trials (RCT) focusing on fertility-sparing treatment for CAH and EC patients are available in the literature. The results of this analysis necessitate further evaluation. Second, the incomplete retrieval of identified research may result in the bias of our results. Although the possibility of publication and selection bias could not be excluded, no obvious bias was detected by the funnel plots.

In conclusion, patients with CAH or early-stage EC who were treated with progesterone therapy had a favorable prognosis. However, the recurrence risk was not insignificant. Weight control is crucial for improving the clinical management of this patient group. The optimal regimen and duration of progestin treatment require further evaluation.

## Acknowledgment

This study was funded by the Clinical Medicine Foundation of Beijing Hospital Administration (grant number: ZYLX201713).

## Author contributions

All authors contributed to data analysis, drafting and revising the article, gave final approval of the version to be published, and agree to be accountable for all aspects of the work.

## Disclosure

The authors report no conflicts of interest in this work.

## References

- Ferlay J, Soerjomataram I, Dikshit R, et al. Cancer incidence and mortality worldwide: sources, methods and major patterns in GLOBOCAN 2012. *Int J Cancer*. 2015;136(5):E359–86. doi:10.1002/ijc.29210
- Evans-Metcalf ER, Brooks SE, Reale FR, Baker SP. Profile of women 45 years of age and younger with endometrial cancer. *Obstet Gynecol*. 1998;91(3):349–354.
- Lee TS, Jung JY, Kim JW, et al. Feasibility of ovarian preservation in patients with early stage endometrial carcinoma. *Gynecol Oncol*. 2007;104(1):52–57. doi:10.1016/j.ygyno.2006.07.003
- Duska LR, Garrett A, Rueda BR, Haas J, Chang Y, Fuller AF. Endometrial cancer in women 40 years old or younger. *Gynecol Oncol*. 2001;83(2):388–393. doi:10.1006/gyno.2001.6434
- Gallup DG, Stock RJ. Adenocarcinoma of the endometrium in women 40 years of age or younger. *Obstet Gynecol*. 1984;64(3):417–420.
- Soliman PT, Oh JC, Schmeler KM, et al. Risk factors for young premenopausal women with endometrial cancer. *Obstet Gynecol*. 2005;105(3):575–580. doi:10.1097/01.AOG.0000154151.14516.f7
- Gressel G, Parkash V, Pal L. Management options and fertility-preserving therapy for premenopausal endometrial hyperplasia and early-stage endometrial cancer. *Int J Gynaecol Obstet*. 2015;131(3):234–239. doi:10.1016/j.ijgo.2015.06.031
- Kalogiannidis I, Agorastos T. Conservative management of young patients with endometrial highly-differentiated adenocarcinoma. *J Obstet Gynaecol*. 2011;31(1):13–17. doi:10.3109/01443615.2010.532249
- Creasman W, Morrow CP, Bundy BN, Homesley HD, Graham JE, Heller PB. Surgical pathologic spread patterns of endometrial cancer. A Gynecologic Oncology Group Study. *Cancer*. 1987;60(8 Suppl):2035–2041.
- Boronow R, Morrow CP, Creasman WT, et al. Surgical staging in endometrial cancer: clinical-pathologic findings of a prospective study. *Obstet Gynecol*. 1984;63(6):825–832.
- Park J-Y, Kim D-Y, Kim J-H, et al. Long-term oncologic outcomes after fertility-sparing management using oral progestin for young women with endometrial cancer (KGOG 2002). *Eur J Cancer*. 2013;49(4):868–874. doi:10.1016/j.ejca.2012.09.017
- Kudesia R, Singer T, Caputo TA, et al. Reproductive and oncologic outcomes after progestin therapy for endometrial complex atypical hyperplasia or carcinoma. *Am J Obstet Gynecol*. 2014;210(3):255.e1–4. doi:10.1016/j.ajog.2013.11.001
- Pronin SM, Novikova OV, Andreeva JY, Novikova EG. Fertility-Sparing Treatment of Early Endometrial Cancer and Complex Atypical Hyperplasia in Young Women of Childbearing Potential. *Int J Gynecol Cancer*. 2015;25(6):1010–1014. doi:10.1097/IGC.0000000000000467
- Fujiwara H, Jobo T, Takei Y, et al. Fertility-sparing treatment using medroxyprogesterone acetate for endometrial carcinoma. *Oncol Lett*. 2012;3(5):1002–1006. doi:10.3892/ol.2012.602
- Koskas M, Uzan J, Luton D, Rouzier R, Daraï E. Prognostic factors of oncologic and reproductive outcomes in fertility-sparing management of endometrial atypical hyperplasia and adenocarcinoma: systematic review and meta-analysis. *Fertil Steril*. 2014;101(3):785–794. doi:10.1016/j.fertnstert.2013.11.028
- Ushijima K, Yahata H, Yoshikawa H, et al. Multicenter phase II study of fertility-sparing treatment with medroxyprogesterone acetate for endometrial carcinoma and atypical hyperplasia in young women. *J Clin Oncol*. 2007;25(19):2798–2803. doi:10.1200/JCO.2006.08.8344
- Kim MK, Yoon BS, Park H, et al. Conservative treatment with medroxyprogesterone acetate plus levonorgestrel intrauterine system for early-stage endometrial cancer in young women: pilot study. *Int J Gynecol Cancer*. 2011;21(4):673–677. doi:10.1111/IGC.0b013e3181fd9a06
- Tamauchi S, Kajiyama H, Utsumi F, et al. Efficacy of medroxyprogesterone acetate treatment and retreatment for atypical endometrial hyperplasia and endometrial cancer. *J Obstet Gynaecol Res*. 2018;44(1):151–156. doi:10.1111/jog.13473
- Fukui Y, Taguchi A, Adachi K, et al. Polycystic ovarian morphology may be a positive prognostic factor in patients with endometrial cancer who achieved complete remission after fertility-sparing therapy with progestin. *Asian Pac J Cancer Prev*. 2017;18(11):3111–3116. doi:10.22034/APJCP.2017.18.11.3111
- Hwang JY, Kim DH, Bae HS, et al. Combined oral medroxyprogesterone/levonorgestrel-intrauterine system treatment for women with grade 2 stage IA endometrial cancer. *Int J Gynecol Cancer*. 2017;27(4):738–742. doi:10.1097/IGC.0000000000000927
- Park J-Y, Seong SJ, Kim T-J, Kim JW, Bae D-S, Nam J-H. Significance of body weight change during fertility-sparing progestin therapy in young women with early endometrial cancer. *Gynecol Oncol*. 2017;146(1):39–43. doi:10.1016/j.ygyno.2017.05.002
- Kim SR, van der Zanden C, Ikiz H, Kuzeljevic B, Havelock J, Kwon JS. Fertility-sparing management using progestin for young women with endometrial cancer from a population-based study. *J Obstet Gynaecol Can*. 2018;40(3):328–333. doi:10.1016/j.jogc.2017.06.037
- Chen M, Jin Y, Li Y, Bi Y, Shan Y, Pan L. Oncologic and reproductive outcomes after fertility-sparing management with oral progestin for women with complex endometrial hyperplasia and endometrial cancer. *Int J Gynaecol Obstet*. 2016;132(1):34–38. doi:10.1016/j.ijgo.2015.06.046
- Baek JS, Lee WH, Kang WD, Kim SM. Fertility-preserving treatment in complex atypical hyperplasia and early endometrial cancer in young women with oral progestin: is it effective? *Obstet Gynecol Sci*. 2016;59(1):24–31. doi:10.5468/ogs.2016.59.1.24
- Zhou R, Yang Y, Lu Q, et al. Prognostic factors of oncological and reproductive outcomes in fertility-sparing treatment of complex atypical hyperplasia and low-grade endometrial cancer using oral progestin in Chinese patients. *Gynecol Oncol*. 2015;139(3):424–428. doi:10.1016/j.ygyno.2015.09.078
- Mitsuhashi A, Sato Y, Kiyokawa T, Koshizaka M, Hanaoka H, Shozu M. Phase II study of medroxyprogesterone acetate plus metformin as a fertility-sparing treatment for atypical endometrial hyperplasia and endometrial cancer. *Ann Oncol*. 2016;27(2):262–266. doi:10.1093/annonc/mdv539

27. Simpson AN, Feigenberg T, Clarke BA, et al. Fertility sparing treatment of complex atypical hyperplasia and low grade endometrial cancer using oral progestin. *Gynecol Oncol.* 2014;133(2):229–233. doi:10.1016/j.ygyno.2014.02.020
28. Gonthier C, Walker F, Luton D, Yazbeck C, Madelenat P, Koskas M. Impact of obesity on the results of fertility-sparing management for atypical hyperplasia and grade 1 endometrial cancer. *Gynecol Oncol.* 2014;133(1):33–37. doi:10.1016/j.ygyno.2013.11.007
29. Jafari Shobeiri, M, Gharabaghi, PM, Esmaceli, H, et al. Fertility sparing treatment in young patients with early endometrial adenocarcinoma. *Pak J Med Sci.* 2013;29(2):651–655.
30. Koskas M, Azria E, Walker F, Luton D, Madelenat P, Yazbeck C. Progestin treatment of atypical hyperplasia and well-differentiated adenocarcinoma of the endometrium to preserve fertility. *Anticancer Res.* 2012;32(3):1037–1043.
31. Ricciardi E, Maniglio P, Frega A, Marci R, Caserta D, Moscarini M. Fertility-sparing treatment of endometrial cancer precursors among young women: a reproductive point of view. *Eur Rev Med Pharmacol Sci.* 2012;16(14):1934–1937.
32. Perri T, Korach J, Gotlieb WH, et al. Prolonged conservative treatment of endometrial cancer patients: more than 1 pregnancy can be achieved. *Int J Gynecol Cancer.* 2011;21(1):72–78. doi:10.1097/IGC.0b013e31820003de
33. Park H, Seok JM, Yoon BS, et al. Effectiveness of high-dose progestin and long-term outcomes in young women with early-stage, well-differentiated endometrioid adenocarcinoma of uterine endometrium. *Arch Gynecol Obstet.* 2012;285(2):473–478. doi:10.1007/s00404-011-1959-x
34. Minig L, Franchi D, Boveri S, Casadio C, Boccioni L, Sideri M. Progestin intrauterine device and GnRH analogue for uterus-sparing treatment of endometrial precancers and well-differentiated early endometrial carcinoma in young women. *Ann Oncol.* 2011;22(3):643–649. doi:10.1093/annonc/mdq463
35. Yu M, Yang J-X, Wu M, Lang J-H, Huo Z, Shen K. Fertility-preserving treatment in young women with well-differentiated endometrial carcinoma and severe atypical hyperplasia of endometrium. *Fertil Steril.* 2009;92(6):2122–2124. doi:10.1016/j.fertnstert.2009.06.013
36. Han AR, Kwon Y-S, Kim DY, et al. Pregnancy outcomes using assisted reproductive technology after fertility-preserving therapy in patients with endometrial adenocarcinoma or atypical complex hyperplasia. *Int J Gynecol Cancer.* 2009;19(1):147–151. doi:10.1111/IGC.0b013e31819960ba
37. Hahn HS, Yoon SG, Hong JS, et al. Conservative treatment with progestin and pregnancy outcomes in endometrial cancer. *Int J Gynecol Cancer.* 2009;19(6):1068–1073. doi:10.1111/IGC.0b013e3181aae1fb
38. Signorelli M, Caspani G, Bonazzi C, Chiappa V, Perego P, Mangioni C. Fertility-sparing treatment in young women with endometrial cancer or atypical complex hyperplasia: a prospective single-institution experience of 21 cases. *BJOG.* 2009;116(1):114–118. doi:10.1111/j.1471-0528.2008.02024.x
39. Yamazawa K, Hirai M, Fujito A, et al. Fertility-preserving treatment with progestin, and pathological criteria to predict responses, in young women with endometrial cancer. *Hum Reprod.* 2007;22(7):1953–1958. doi:10.1093/humrep/dem088
40. Yang Y-C, Wu -C-C, Chen C-P, Chang C-L, Wang K-L. Reevaluating the safety of fertility-sparing hormonal therapy for early endometrial cancer. *Gynecol Oncol.* 2005;99(2):287–293. doi:10.1016/j.ygyno.2005.06.018
41. Yahata T, Fujita K, Aoki Y, Tanaka K. Long-term conservative therapy for endometrial adenocarcinoma in young women. *Hum Reprod.* 2006;21(4):1070–1075. doi:10.1093/humrep/dei434
42. Gotlieb W. Outcome of fertility-sparing treatment with progestins in young patients with endometrial cancer. *Obstet Gynecol.* 2003;102(4):718–725.
43. Gallos ID, Yap J, Rajkhowa M, Luesley DM, Coomarasamy A, Gupta JK. Regression, relapse, and live birth rates with fertility-sparing therapy for endometrial cancer and atypical complex endometrial hyperplasia: a systematic review and metaanalysis. *Am J Obstet Gynecol.* 2012;207(4):266 e1–12. doi:10.1016/j.ajog.2012.08.011
44. Gunderson CC, Fader AN, Carson KA, Bristow RE. Oncologic and reproductive outcomes with progestin therapy in women with endometrial hyperplasia and grade 1 adenocarcinoma: a systematic review. *Gynecol Oncol.* 2012;125(2):477–482. doi:10.1016/j.ygyno.2012.01.003
45. Minig L, Franchi D, Valero de Bernabé J, Sideri M. Controversies of the hormonal conservative treatment of endometrial cancer. *Gynecol Obstet Invest.* 2013;75(3):145–151. doi:10.1159/000349891
46. Park JY, Nam JH. Progestins in the fertility-sparing treatment and retreatment of patients with primary and recurrent endometrial cancer. *Oncologist.* 2015;20(3):270–278. doi:10.1634/theoncologist.2013-0445
47. Erkanli S, Ayhan A. Fertility-Sparing Therapy in Young Women With Endometrial Cancer. *Int J Gynecol Cancer.* 2010;20(7):1170–1187.
48. Feichtinger M, Rodriguez-Wallberg KA. Fertility preservation in women with cervical, endometrial or ovarian cancers. *Gynecol Oncol Res Pract.* 2016;3:8. doi:10.1186/s40661-016-0029-2
49. Fan Z, Li H, Hu R, Liu Y, Liu X, Gu L. Fertility-Preserving treatment in young women with grade 1 presumed stage IA endometrial adenocarcinoma: a meta-analysis. *Int J Gynecol Cancer.* 2018;28(2):385–393. doi:10.1097/IGC.0000000000001164
50. Reeves GK, Pirie K, Beral V, Green J, Spencer E, Bull D. Cancer incidence and mortality in relation to body mass index in the Million Women Study: cohort study. *BMJ.* 2007;335(7630):1134. doi:10.1136/bmj.39367.495995.AE
51. Bessonova L, Marshall SF, Ziogas A, et al. The association of body mass index with mortality in the California Teachers Study. *Int J Cancer.* 2011;129(10):2492–2501. doi:10.1002/ijc.25905
52. Schmandt RE, Iglesias DA, Co NN, Lu KH. Understanding obesity and endometrial cancer risk: opportunities for prevention. *Am J Obstet Gynecol.* 2011;205(6):518–525. doi:10.1016/j.ajog.2011.05.042
53. Courneya K, Karvinen KH, Campbell KL, et al. Associations among exercise, body weight, and quality of life in a population-based sample of endometrial cancer survivors. *Gynecol Oncol.* 2005;97(2):422–430. doi:10.1016/j.ygyno.2005.01.007
54. Arem H, Irwin ML. Obesity and endometrial cancer survival: a systematic review. *Int J Obes (Lond).* 2013;37(5):634–639. doi:10.1038/ijo.2012.94
55. Vrbikova J, Hainer V. Obesity and polycystic ovary syndrome. *Obes Facts.* 2009;2(1):26–35. doi:10.1159/000194971
56. Piltonen TT. Polycystic ovary syndrome: Endometrial markers. *Best Pract Res Clin Obstet Gynaecol.* 2016;37:66–79. doi:10.1016/j.bpobgyn.2016.03.008
57. Franks S. Polycystic ovary syndrome. *N Engl J Med.* 1995;333(13):853–861. doi:10.1056/NEJM199509283331307
58. Okamura Y, Saito F, Takaishi K, et al. Polycystic ovary syndrome: early diagnosis and intervention are necessary for fertility preservation in young women with endometrial cancer under 35 years of age. *Reprod Med Biol.* 2017;16(1):67–71. doi:10.1002/rmb2.12012
59. Kumar N, Koide SS, Tsong Y, Sundaram K. Nestorone: a progestin with a unique pharmacological profile. *Steroids.* 2000;65(10–11):629–636.
60. Schindler A, Campagnoli C, Druckmann R, et al. Classification and pharmacology of progestins. *Maturitas.* 2003;46(Suppl 1):S7–S16.
61. Adlercreutz H, Eriksen P, Christensen M. Plasma concentrations of megestrol acetate and medroxyprogesterone acetate after single oral administration to healthy subjects. *J Pharm Biomed Anal.* 1983;1(2):153–162.



62. Schmeler, KM, Soliman, PT, Sun, CC, et al. Endometrial cancer in young, normal-weight women. *Gynecol Oncol.* 2005;99(2):388–392.
63. Gadducci A, Spirito N, Baroni E, Tana R, Genazzani AR. The fertility-sparing treatment in patients with endometrial atypical hyperplasia and early endometrial cancer: a debated therapeutic option. *Gynecol Endocrinol.* 2009;25(10):683–691. doi:10.1080/09513590902733733
64. Dijkhuizen FP, Mol BW, Brölmann HA, Heintz AP. The accuracy of endometrial sampling in the diagnosis of patients with endometrial carcinoma and hyperplasia: a meta-analysis. *Cancer.* 2000;89(8):1765–1772.
65. Stovall TG, Photopulos GJ, Poston WM, Ling FW, Sandles LG. Pipelle endometrial sampling in patients with known endometrial carcinoma. *Obstet Gynecol.* 1991;77(6):954–956.
66. Kim DH, Seong SJ, Kim MK, et al. Dilatation and curettage is more accurate than endometrial aspiration biopsy in early-stage endometrial cancer patients treated with high dose oral progestin and levonorgestrel intrauterine system. *J Gynecol Oncol.* 2017;28(1):e1. doi:10.3802/jgo.2017.28.e1

## Cancer Management and Research

Dovepress

### Publish your work in this journal

Cancer Management and Research is an international, peer-reviewed open access journal focusing on cancer research and the optimal use of preventative and integrated treatment interventions to achieve improved outcomes, enhanced survival and quality of life for the cancer patient.

The manuscript management system is completely online and includes a very quick and fair peer-review system, which is all easy to use. Visit <http://www.dovepress.com/testimonials.php> to read real quotes from published authors.

Submit your manuscript here: <https://www.dovepress.com/cancer-management-and-research-journal>