

SCIENTIFIC REPORTS



OPEN

High dispersal levels and lake warming are emergent drivers of cyanobacterial community assembly in peri-Alpine lakes

Marie-Eve Monchamp^{1,2}, Piet Spaak^{1,2} & Francesco Pomati^{1,2}

Disentangling the relative importance of deterministic and stochastic processes in shaping natural communities is central to ecology. Studies about community assembly over broad temporal and spatial scales in aquatic microorganisms are scarce. Here, we used 16S rDNA sequence data from lake sediments to test for community assembly patterns in cyanobacterial phylogenies across ten European peri-Alpine lakes and over a century of eutrophication and climate warming. We studied phylogenetic similarity in cyanobacterial assemblages over spatial and temporal distance, and over environmental gradients, comparing detected patterns with theoretical expectations from deterministic and stochastic processes. We found limited evidence for deviation of lake communities from a random assembly model and no significant effects of geographic distance on phylogenetic similarity, suggesting no dispersal limitation and high levels of stochastic assembly. We detected a weak influence of phosphorus, but no significant effect of nitrogen levels on deviation of community phylogenies from random. We found however a significant decay of phylogenetic similarity for non-random communities over a gradient of air temperature and water column stability. We show how phylogenetic data from sedimentary archives can improve our understanding of microbial community assembly processes, and support previous evidence that climate warming has been the strongest environmental driver of cyanobacterial community assembly over the past century.

Understanding the mechanisms that determine changes in the structure and composition of natural communities over large spatial and temporal scales is critical, given the impacts that human activities have on biodiversity and ecosystem functions¹. The relative importance of stochastic and deterministic processes driving community assembly might vary over space and time: environmental conditions, dispersal, demographic stochasticity, ecological interactions and evolutionary processes can all influence the structure of natural communities across scales²⁻⁷. It is an on-going challenge to understand how anthropogenic environmental changes influence ecological and evolutionary mechanisms determining community assembly, particularly in aquatic microbes whose dispersal appears to have no boundaries^{8,9}.

Assembly studies focusing on ecological mechanisms in lake cyanobacterial communities have been scarce due to a lack of data at the appropriated spatial and temporal scale, despite the importance that these organisms have reached over the past decades for freshwater ecosystem functioning and services¹⁰. Over the last century, the frequency and severity of cyanobacterial blooms have increased in lakes and reservoirs worldwide despite remediation measures applied at the regional and international scale^{11,12}. Cyanobacterial blooms are often dominated by toxic species, and there is a global concern that environmental changes are promoting the geographic expansion of some potentially harmful taxa^{13,14}, due to a combined effect of increasing temperature and nutrient loads^{11,15,16}. Toxic species such as *Dolichospermum lemmermannii* and *Planktothrix rubescens* have indeed widened their geographic distribution, supporting the idea that some harmful cyanobacteria are spreading across temperate lakes¹⁶. The role of geographic dispersal (where distance limits the establishment of new taxa) relative

¹Eawag, Swiss Federal Institute of Aquatic Science and Technology, Department of Aquatic Ecology, 8600, Dübendorf, Switzerland. ²Swiss Federal Institute of Technology (ETH) Zürich, Institute of Integrative Biology, 8092, Zürich, Switzerland. Correspondence and requests for materials should be addressed to F.P. (email: francesco.pomati@eawag.ch)

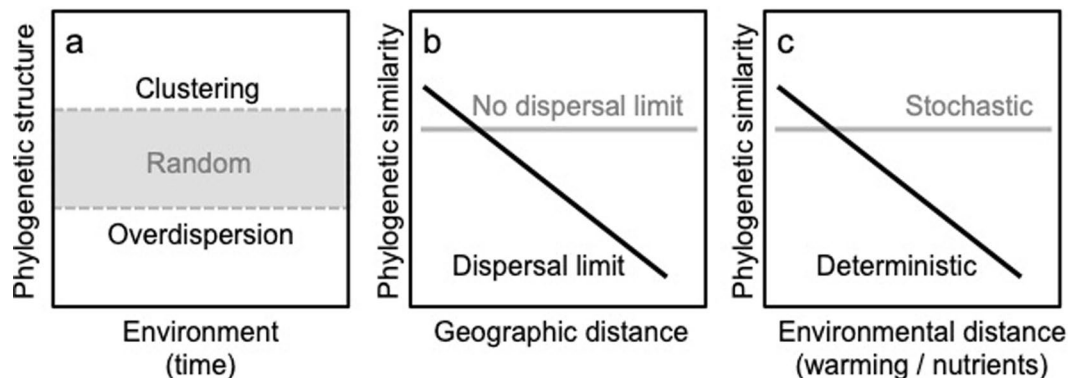


Figure 1. Schematic description of the theoretical expectations for phylogenetic community assembly within and between communities, based on stochastic (dispersal-driven) and deterministic (environment-driven) processes. **(a)** Taxa associations are analysed using their phylogenetic structure (mean-pairwise-distance (MPD), mean-nearest-taxon-distance (MNTD) or phylogenetic distance (UniFrac)) for each date of each time-series and by comparing it to expected patterns from null-model simulations of random assembly (grey box): clustering and overdispersion (above and below the random expectation, respectively) signal communities that are composed of species phylogenetically closer or further apart than expected by chance, respectively, as a sign of deterministic processes. **(b)** Predicted patterns in phylogenetic community similarity depending on limitation (black line) and no limitation (grey line) in taxa dispersal among sites. **(c)** Predicted change in phylogenetic similarity for completely stochastic (grey) and deterministic (black) models of community assembly along an environmental gradient (e.g. lake physics and chemistry).

to turnover of taxa driven by environmental gradients has not been explicitly explored in the assembly of these globally important microorganisms.

In this study, we analysed cyanobacterial community composition data spanning over a hundred years and across ten lakes. We used 16S rDNA sequences from sediment cores of European peri-Alpine lakes (Supplementary Fig. S1) that underwent directional environmental change characterised by climate warming and eutrophication¹⁶. Our previous work has explored the patterns of long-term change in alpha and beta diversity in lake cyanobacterial communities, showing a homogenization of assemblage composition at the regional scale¹⁶. The aim of this study was to test for emergent deterministic (environment-driven) and stochastic (dispersal-driven) patterns in the phylogenetic structure of cyanobacterial assemblages across these different lakes of the same region, using the same dataset^{17,18}.

We used a null-model that accounted for temporal changes in the size of the species pool to simulate random assembly. We then tested for deviation from random patterns as phylogenetic clustering and overdispersion: the tendency for taxa to co-occur with larger or smaller expectancy, respectively, than predicted by the null-model (Fig. 1a)^{19–23}. In most cases, dispersal-driven assembly would generate random taxa co-occurrence patterns, while environmental drivers would lead to deviation from random assembly^{20,22,24,25}. There can be interactions among assembly mechanisms that generate exceptions to these predictions^{26,27}. We however expect that comparison of phylogenetic structures to null-model simulations, combined with the patterns of community phylogenetic similarity across lakes and spatial or ecological distance, will allow us to test for deterministic and stochastic signatures in cyanobacterial community assembly.

Specifically, when dispersal of cyanobacterial taxa among lakes is not limited (Fig. 1b), we expect that phylogenetic community similarity will decrease over an environmental gradient, while no change is expected when the system is driven only by dispersal (Fig. 1c)¹⁸. If there are barriers to dispersal of cyanobacteria, we predict differences in similarities among lake communities that are only dependent on the geographic distance (Fig. 1b), and no effects driven by ecological gradients (Fig. 1c)¹⁸. The environmental-driven decrease in phylogenetic community similarity will not be influenced by dispersal limitation (Fig. 1b), and will vary deterministically as a consequence of the gradient itself (Fig. 1c)¹⁸. This is because we expect that, under environment-driven assembly, the turnover of taxa along the ecological gradient will determine community structure in each lake. Here, we investigated whether cyanobacterial community phylogenetic structures within and across lakes over time matched these expectations from assembly processes, and what patterns dominate.

Results

Community phylogenetic structure. We calculated a standardised effect sizes (SES) of the mean-nearest-taxon-distance (MNTD) within each local community based on the comparison of the observed MNTD values with the values of a randomly assembled community (Methods). We then calculated the Nearest Taxon Index (NTI), which is the inverse of SES_{MNTD} ²⁸. Based on NTI, 58% of cyanobacterial communities showed a phylogenetic structure that significantly differed from the null (random) expectation (Fig. 2). All of these non-randomly assembled communities were significantly phylogenetically clustered, with positive NTI values outside the 95% confidence interval of the null model simulation. Although the remaining thirty-two communities analysed did not show significant signal of non-randomness, most (especially since the 1980s) of the NTI values were positive, suggesting a tendency towards phylogenetic clustering.

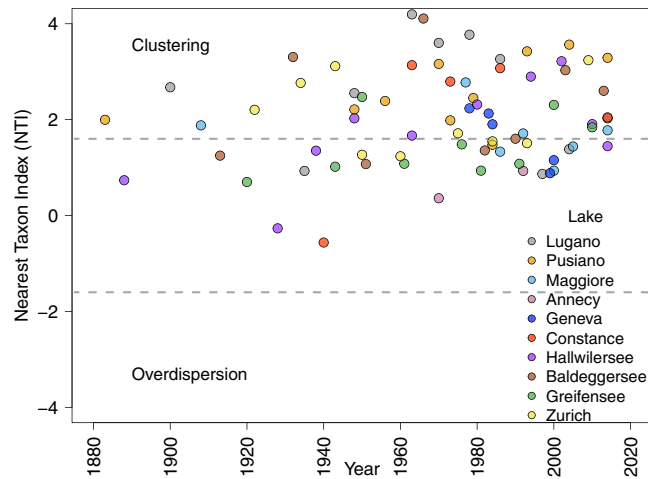


Figure 2. Time series of Nearest Taxon Index (NTI)³², calculated for each local community compared with null model simulations. Samples outside the central area delimited by the dashed lines show significant community structure (above or below the 95% confidence intervals of the null-model simulation; grey dashed lines). Positive values signal phylogenetic clustering whereas negative values signal phylogenetic overdispersion.

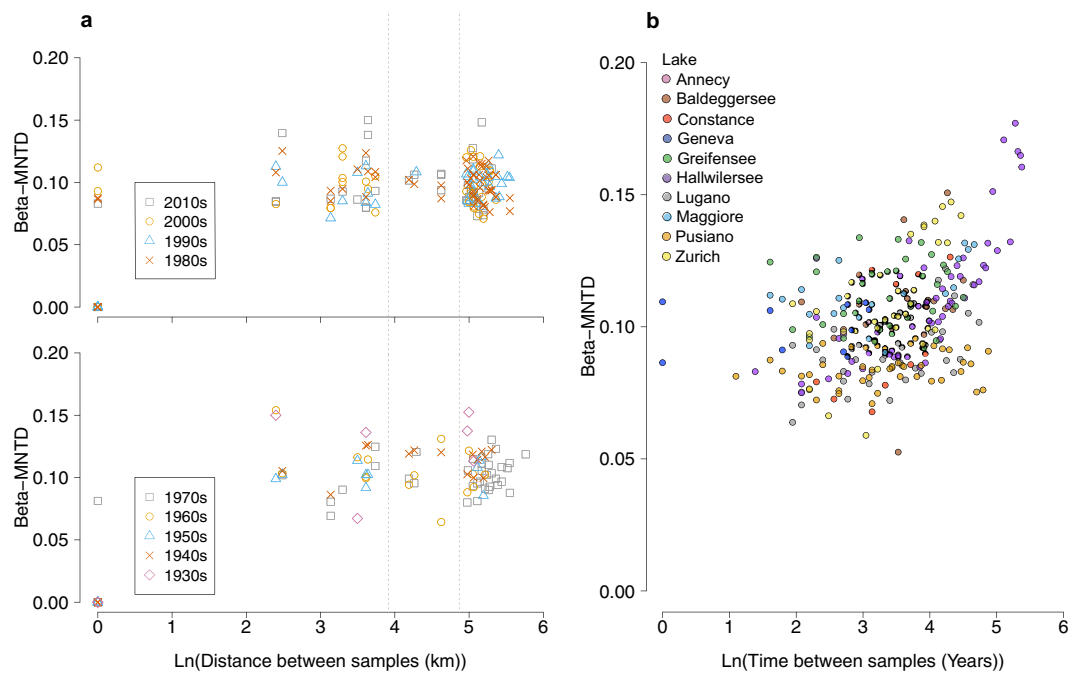


Figure 3. Geographic and temporal distance-decay in cyanobacterial communities. **(a)** Mean-nearest-taxon-distance (MNTD) quantified between all pairwise cyanobacterial communities at each decade between the 1900s to the 2010s plotted against a gradient of natural log-transformed geographic distances (km) between lakes. A null distance signifies that the pairwise phylogenetic dissimilarity was calculated between samples of the same lake at a given period. The vertical dashed lines mark the distances of 50 km and 130 km for reference (the absolute pairwise distances separating all lakes are summarized in Supplementary Table S2). **(b)** MNTD values plotted against the natural log-transformed temporal gradient (years) for each lake (colour coding).

Distance-decay relationships. We estimated beta-diversity across all pairs of communities reconstructed from the sedimentary archives of the ten lakes at each time-period and investigated the role of geographical and temporal distance (Fig. 3). Our analysis based on the MNTD metric did not reveal an increase in phylogenetic beta-diversity with geographic distance (Fig. 3a), suggesting no dispersal limitation of cyanobacteria at the regional (peri-Alpine) scale. On the contrary, we observed in four of the lakes (Lugano, Hallwilersee, Maggiore, and Zurich) a decay of phylogenetic similarity along the temporal gradient representing the history of each lake (Fig. 3b and Supplementary Fig. S2). When using the alternative beta-diversity measures beta-MPD, the results show significant decay in lakes Hallwilersee, Pusiano, Maggiore, and Zurich (Supplementary Fig. S3)

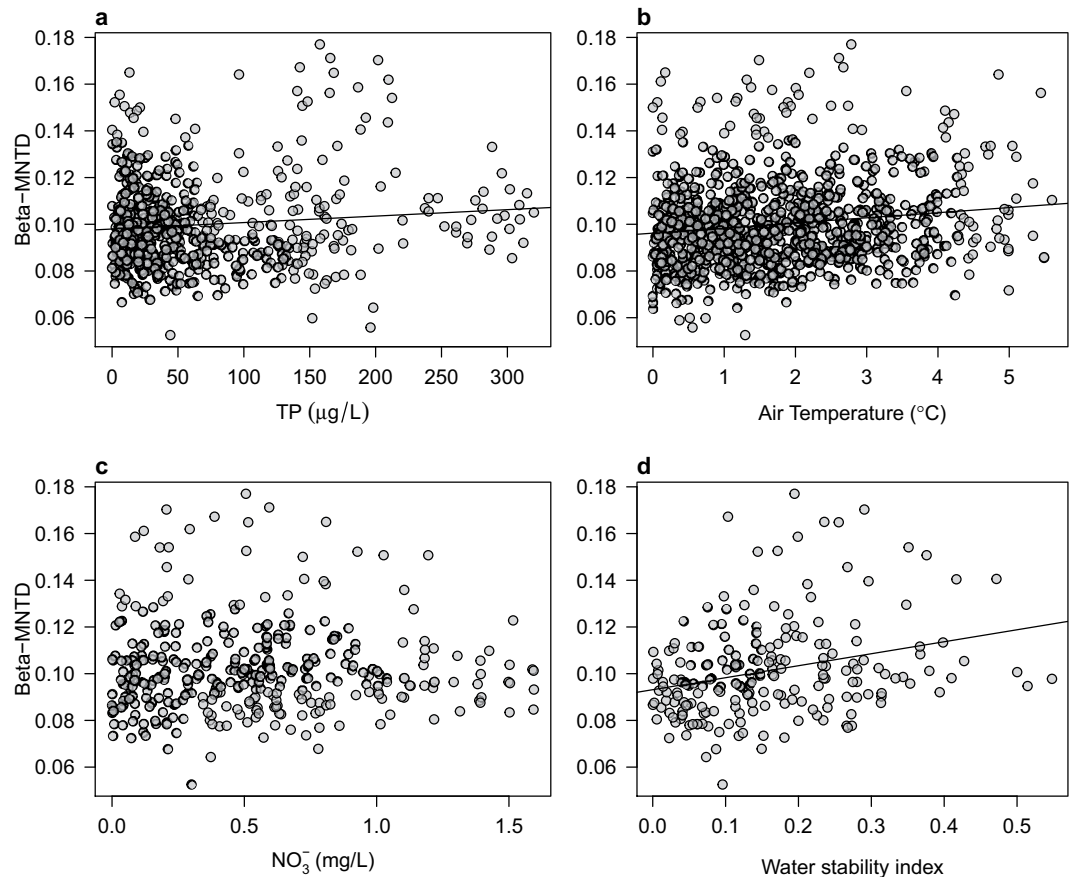


Figure 4. Cyanobacterial beta-diversity over environmental gradients. Phylogenetic similarity (based on beta-MNTD) between pair of samples are plotted against environmental distances (euclidean) in (a) TP concentrations ($\mu\text{g/L}$) and (b) NO_3^- concentrations (mg/L), (c) air temperature ($^{\circ}\text{C}$), and (d) maximal annual Schmidt Stability Index (SSI). Only significant regressions ($p \leq 0.05$) are shown. The number of samples in each analysis depends on the availability of lake monitoring data (details on the time-series of monitoring data are found in¹⁶). Samples used in the regression analysis are the non-random communities (i.e., showing significant phylogenetic structure based on SES_{MNTD} deviation from the null model expectation).

and a significant decrease in UniFrac similarity through time in all lakes, with the exception of lakes Geneva and Annecy (the latter due to insufficient data points) (Supplementary Fig. S4).

Community similarity over environmental gradients. All non-random samples identified in Fig. 2 using the SES_{MNTD} metric were used to investigate the role of the main chemical (total phosphorus [TP] and nitrate [NO_3^-]) and physical (air temperature and water column stability) drivers in explaining cyanobacterial community deviation from a random assembly. We found no evidence for a role of the NO_3^- ($p = 0.989$, $\text{DF} = 349$ DF) in explaining non-random community structure and only a weak effect of the role of TP ($p = 0.0164$, adjusted $R^2 = 0.0084$, $\text{DF} = 559$; Fig. 4). The relationship between the main chemicals and beta diversity was also investigated using two other common phylogenetic diversity metrics, i.e. UniFrac and MPD. UniFrac similarity declined slightly over the TP gradient (Supplementary Fig. S5). No significant relationship between MPD and TP or NO_3^- was observed (Supplementary Fig. S6). The effect of ammonia (NH_4^+) was also considered, although concentrations of this nutrient have not been found to be historically high in these lakes. As for NO_3^- , there was no evidence for effects of NH_4^+ on pairwise cyanobacterial phylogenetic diversity based on UniFrac, beta-MPD, and beta-MNTD (Supplementary Fig. S7).

On the other hand, ordinary least squares regression showed a significant increase in community beta-MNTD along with both air temperature ($p = 6.18 \times 10^{-6}$, adjusted $R^2 = 0.0204$, $\text{DF} = 944$) and water column stability (Schmidt Stability Index - SSI) gradients ($p = 3.815 \times 10^{-8}$, adjusted $R^2 = 0.0741$, $\text{DF} = 208$) (Fig. 4). The regression based on UniFrac revealed a significant decay in phylogenetic similarity with the temperature gradient ($p = 1.497 \times 10^{-15}$, adjusted $R^2 = 0.0642$, $\text{DF} = 944$), and when using beta-MPD values, we only observed a significant relationship with the water column stability gradient ($p = 3.05 \times 10^{-8}$, adjusted $R^2 = 0.1333$, $\text{DF} = 208$; Supplementary Fig. S6). This suggests that communities in lakes characterized by similar physical characteristics related to lake water temperature are more similar in cyanobacterial community composition compared to lakes that display greater differences in temperature and stratification.

Discussion

Over half of the cyanobacterial communities obtained in this study from sedimentary archives showed significant deviation from a random phylogenetic structure, suggesting a mixed signal of deterministic (environment-driven) and stochastic (dispersal-driven) community assembly in lake cyanobacteria. Our previous work has shown that DNA-based reconstructions of cyanobacterial communities are robust^{16,29}, therefore the observed patterns are unlikely to be driven by biases in sedimentary DNA-based community reconstructions². The decay in phylogenetic similarity over time coupled with the lack of a geographic distance-decay relationship across lake communities (Fig. 3) suggest temporally dynamic communities (potentially driven by environmental change) with no limitation to dispersal at the regional (peri-Alpine) scale. In a recent study on genetic divergence among populations of a marine diatom, a significant relationship could not be found between genetic and geographic distances at regional and global scales⁹. Most reports about microbial dispersal so far did not show clear evidence for geographic distance-decay patterns at the local (0–100 km) and regional (101–5,000 km) scales³⁰. The scale of distances in our study was not suited to capture dissimilarity changes among cyanobacterial communities along very large geographical distances (e.g. continental), where an effect of geographical isolation might emerge³¹. Nevertheless, our research suggests that cyanobacterial communities present weak dispersal limitation among lakes of the same region, even around and across barriers such as the European Alpine mountain range.

Previous work has shown that communities of cyanobacteria have become more homogeneous in terms of composition across peri-Alpine lakes over the last decades, in favour of a few clades of bloom-forming and potentially toxic taxa^{14,16}. We speculate that this could result in an increase of phylogenetic clustering over time, if the traits under selection by environmental changes are phylogenetically conserved²⁰. The most sensitive metric of phylogenetic diversity in our study was the MNTD, which measures changes among the closest relative taxa at the tip of the phylogeny^{28,32}. Our data show that the phylogenetic structure of about half of the assemblages displayed significant clustering at this level, which suggests the hypothesis that the environmental driving forces of cyanobacterial assembly in the lakes are acting on traits that are conserved at the tip of phylogenies.

Coloniality and buoyancy regulation are multiphyletic traits (i.e. present in multiple lineages) that are however conserved at among close relatives (within Family, Genus, Species), and have been associated to the spreading taxa, which belong to different cyanobacterial phylogenetic lineages within the orders *Chroococcales*, *Nostocales* and *Oscillatoriales*^{10,11,16}. While coloniality is a defence trait under grazing pressure, buoyancy regulation becomes clearly advantageous under lake warming and a stable water column, since it allows cyanobacteria to adjust to vertical light conditions and access nutrients in deep waters. It appears reasonable to hypothesize that buoyancy regulation is advantageous in warming lakes, as it has been suggested in past reviews about drivers of cyanobacterial dominance^{11,15}. The prevalent signal of clustering in the community phylogenies, supported by previous evidence, suggests environmental selection for traits such as those mentioned above.

The recorded levels of NO_3^- and NH_4^+ across lakes did not significantly explain deviation from random assembly in the investigated cyanobacterial communities (Fig. 4 and Supplementary Fig. S5). In the case of TP, only a weak effect was found on beta-MNTD and UniFrac similarity, whereas no significant effect was observed on beta-MPD (Fig. 4 and Supplementary Figs S5 and S6). It is important to note that most of the lakes investigated here classify as meso-eutrophic to eutrophic³³ (see average TP, NO_3^- and NH_4^+ concentrations reported in Supplementary Data S1 and S2 in¹⁶). Significant patterns of phylogenetic similarity might emerge across communities characterized by a broader nutrient gradient, but this remains to be tested by surveys or experimentally. Rather, the difference in lake physical conditions, such as temperature and strength of the water column stratification, seemed in our study to explain the most significant proportion of observed variance in the phylogenetic relatedness among cyanobacterial communities (Fig. 4; Supplementary Figs S5 and S6). Warming might also explain the observed decay of phylogenetic similarity over time (Fig. 3b; Supplementary Figs S2–S4). The increasing trend in air temperatures, which has accelerated since the 1980s across the peri-Alpine region, has caused modifications in the thermal regime of lakes, e.g., via changes in the duration and strength of the water column stratification^{16,34}, which in turn affects recirculation and availability of nutrients for phytoplankton growth^{10,23,35}. This effect has been amply documented and has favoured, as mentioned above, buoyant cyanobacterial forms that are able to control their vertical position in the water column to reach optimal nutrient and light conditions^{14,16,23,34,35}. Our findings therefore support previous evidence and suggest that climate warming is the strongest environmental driver of the assembly of lake cyanobacterial communities³⁶, and might select for specific traits such as, for example, buoyancy regulation.

In conclusion, this is the first study to our knowledge that explicitly tests for deterministic and stochastic assembly patterns in cyanobacterial communities across regional scales and over the past century, period during which humans have been recognized as a major driver of environmental change. Our study shows that both stochastic (dispersal-driven) and deterministic (environmental-driven) processes are important in assembling cyanobacterial communities across lakes of the European peri-Alpine region. Cultural eutrophication and climate change are the most notable environmental factors favouring cyanobacterial growth, but the deterministic processes governing community assembly appeared in our study to be more significantly driven by lake warming. Our results confirm previous evidence^{16,36} and expand our understanding of cyanobacterial community assembly processes. Knowledge about the relative importance of (potentially controllable) environmental drivers and (likely uncontrollable) dispersal of organisms in shaping the structure of cyanobacterial assemblages is important for the management of aquatic ecosystems whose services are threatened by an increasing prevalence of potentially toxic taxa.

Materials and Methods

Data collection. We used the high-resolution 16S rDNA sequence dataset from¹⁶, spanning across ten European peri-Alpine lakes and between the early 1900s to 2016, to estimate phylogenetic diversity of cyanobacterial communities. Briefly, sediment cores were collected in ten lakes between 2013 and 2016 using a gravity corer,

and layers were dated by varve counting and, in most cases, with radionuclide (Pb^{210} , Cs^{237}) measurements^{16,29}. Based on the sediment age models, sediment sub-samples were collected at various depths in cores from each lake to capture the cyanobacterial community composition over the last ~100 years. DNA was extracted from bulk sediments in a clean laboratory facility following strict ancient DNA work protocols, and the DNA extracts were used for PCR and high-throughput sequencing of the cyanobacterial 16S rRNA gene (Supplementary Table S1) on a MiSeq Illumina platform as previously described^{16,29}.

The clean, primer-trimmed sequences were clustered in operational taxonomic units (OTUs) with a 97% threshold of sequence similarity in QIIME³⁷ using the UPARSE workflow³⁸. PyNast³⁷ and the Greengenes microbial sequence database³⁹ were used for sequence alignment, and FastTree⁴⁰ was used to estimate a phylogeny based on maximum-likelihood containing all OTUs found in the lakes. OTUs were taxonomically assigned with a confidence threshold of 85% and the ones assigned to phyla other than photosynthetic cyanobacteria were removed from the dataset. The 'phyloseq' package in Bioconductor⁴¹ was used to import and filter the sequence data and all analyses were performed with the software R version 3.3.2⁴². Each sample was rarefied to 2,744 sequences (cyanobacteria only) prior to phylogenetic analyses.

The physical (air temperature in °C) and chemical (nitrate [NO_3^-] and ammonia [NH_4^+] in mg/L, total phosphorus [TP] in µg/L) data consist of several decades of monitoring of the ten lakes¹⁶. In all lakes, with the exception of Lake Pusiano, the nutrient data was collected at discrete depths over the water column and we have integrated values over the twenty upper meters. For Lake Pusiano, only the integrated values (whole water column) were available. Annual means were derived from monthly or bi-monthly data (Supplementary Data S1 and S2). For each sediment layer, the mean annual nutrient concentration of three consecutive years was used in order to reduce the bias related to sediment dating uncertainty (see²⁹ for further details). The annual maximal Schmidt Stability Index (SSI; the maximal strength of water column stratification) was derived from water temperature and hypsometry data^{16,43}. Euclidean distances for each environmental variable were calculated among lakes to derive environmental gradients used in the linear models in the R package 'vegan' version 2.4.4⁴⁴.

Phylogenetic analyses. To derive the phylogenetic structure of each community, we quantified the mean-nearest-taxon-distance (MNTD)^{32,45} using *mntd* and *ses.mntd* in the package 'picante' version 1.6.2 for R⁴⁶ and used null-model simulations of random assembly that account for temporal changes in the size of the species pool²². The MNTD metric accounts for changes among closest relatives, which makes it suitable to investigate changes over relatively recent evolutionary times⁴⁵. We calculated a standardised effect size of MNTD (SES_{MNTD}) within each local community subtree based on the comparison of the observed MNTD values with the values in the random distribution using 999 randomisations of the species at the tip of the phylogenetic tree, while species richness was maintained^{46–48}. $\text{SES}_{\text{MNTD}} = \text{mean}(\text{MNTD}_{\text{Observed}} - \text{MNTD}_{\text{Randomized}}) / \text{SD}(\text{MNTD}_{\text{Randomized}})$ ⁴⁹. The SES_{MNTD} values were multiplied by -1 to be equivalent to the nearest taxon index (NTI)²⁸.

To quantify beta-diversity across lakes and turnover in phylogenetic composition through time, we derived the beta-mean-nearest-taxon-distance (beta-MNTD). Additionally, we investigated changes in beta-mean-pairwise-distance (beta-MPD) and UniFrac similarity based on the OTU table and the fasta files from amplicon sequencing. To derive the beta-MNTD and beta-MPD pairwise distances, we used the *comdist* and the *comdistnt* functions, respectively, in the package 'picante'. The UniFrac phylogenetic distances⁵⁰ between all pairs of samples were derived using the *dist* function in the Bioconductor package 'phyloseq'⁴¹. For the geographic distance-decay analysis, we used the *GeoDistanceInMetresMatrix* function in R to derive a matrix of geographical distances between lakes (see Supplementary Methods and Supplementary Table S2). The geographic distance-decay relationship was measured on binned communities each representing a period of one decade (from the 1930s to the 2010s; decades 1900s, 1910s and 1920s were excluded due to insufficient number of samples). The binning was done to remove the factor time from the analysis, as it would introduce a bias when comparing multiple samples from single lakes over time. The temporal distance-decay pattern of phylogenetic similarity was studied by plotting beta-MNTD, beta-MPD, and UniFrac distance against natural log-transformed time distances (years) for each lake in the dataset. Significance of the distance-decay relationship at each decade was tested using Mantel tests in the R package 'ade4' with a significance threshold of $p \leq 0.05$. To test whether the environment (physical and chemical parameters) was a driver of community assembly, we used the samples that were identified as phylogenetically non-random (i.e., those which NTI values were outside the 95% confidence interval of the null model simulation) in linear ordinary least square (OLS) regressions where physical and chemical lake data were the explanatory variables.

References

- Cardinale, B. J. *et al.* Biodiversity loss and its impact on humanity. *Nature* **486**, 59–67, <https://doi.org/10.1038/nature11148> (2012).
- Chase, J. M. Stochastic community assembly causes higher biodiversity in more productive environments. *Science (New York, N.Y.)* **328**, 1388–1391, <https://doi.org/10.1126/science.1187820> (2010).
- Vergnon, R., Van Nes, E. H. & Scheffer, M. Emergent neutrality leads to multimodal species abundance distributions. *Nature Communications* **3**, 663–666, <https://doi.org/10.1038/ncomms1663> (2012).
- Siepielski, A. M., Hung, K.-L., Bein, E. E. B. & McPeck, M. A. *Experimental evidence for neutral community dynamics governing an insect assemblage.* *Ecology* **91**, 847–857 (2010).
- Segura, A. M. *et al.* Emergent neutrality drives phytoplankton species coexistence. *Proceedings of The Royal Society of London B* **278**, 2355–2361, <https://doi.org/10.1098/rspb.2010.2464> (2011).
- Wagner, C. E., Harmon, L. J. & Seehausen, O. Ecological opportunity and sexual selection together predict adaptive radiation. *Nature* **487**, 366–369, <https://doi.org/10.1038/nature11144> (2012).
- Hillierislambers, J., Adler, P. B., Harpole, W. S., Levine, J. M. & Mayfield, M. M. Rethinking Community Assembly through the Lens of Coexistence Theory. *Annu. Rev. Ecol. Evol. Syst.* **43**, 227–248, <https://doi.org/10.1146/annurev-ecolsys-110411-160411> (2012).
- Patterson, D. J. Seeing the big picture on microbe distribution. *Science* **325**, 1506–1507, <https://doi.org/10.1126/science.1179690> (2009).
- Whittaker, K. A. & Rynearson, T. A. Evidence for environmental and ecological selection in a microbe with no geographic limits to gene flow. *Proceedings of the National Academy of Sciences* **114**, 2651–2656, <https://doi.org/10.1073/pnas.1612346114> (2017).

10. Huisman, J. *et al.* Cyanobacterial blooms. *Nature Reviews Microbiology*, online ahead of print-online ahead of print, <https://doi.org/10.1038/s41579-018-0040-1> (2018).
11. Carey, C. C., Ibelings, B. W., Hoffmann, E. P., Hamilton, D. P. & Brookes, J. D. Eco-physiological adaptations that favour freshwater cyanobacteria in a changing climate. *Water Research* **46**, 1394–1407, <https://doi.org/10.1016/j.watres.2011.12.016> (2012).
12. Taranu, Z. E., Zurawell, R. W., Pick, F. & Gregory-Eaves, I. Predicting cyanobacterial dynamics in the face of global change: the importance of scale and environmental context. *Global Change Biology* **18**, 3477–3490, <https://doi.org/10.1111/gcb.12015> (2012).
13. Sinha, R. *et al.* Increased incidence of *Cylindrospermopsis raciborskii* in temperate zones - Is climate change responsible? *Water Research* **46**, 1408–1419, <https://doi.org/10.1016/j.watres.2011.12.019> (2012).
14. Salmaso, N., Capelli, C., Shams, S. & Cerasino, L. Expansion of bloom-forming *Dolichospermum lemmermannii* (Nostocales, Cyanobacteria) to the deep lakes south of the Alps: colonization patterns, driving forces and implications for water use. *Harmful Algae* **50**, 76–87, <https://doi.org/10.1016/j.hal.2015.09.008> (2015).
15. Rigosi, A., Carey, C. C., Ibelings, B. W. & Brookes, J. D. The interaction between climate warming and eutrophication to promote cyanobacteria is dependent on trophic state and varies among taxa. *Limnology and Oceanography* **59**, 99–114, <https://doi.org/10.4319/lo.2014.59.01.0099> (2014).
16. Monchamp, M.-E. *et al.* Homogenization of lake cyanobacterial communities over a century of climate change and eutrophication. *Nature Ecology & Evolution* **2**, 317–324, <https://doi.org/10.1038/s41559-017-0407-0> (2018).
17. Ruokolainen, L., Ranta, E., Kaitala, V. & Fowler, M. S. When can we distinguish between neutral and non-neutral processes in community dynamics under ecological drift? *Ecology Letters* **12**, 909–919, <https://doi.org/10.1111/j.1461-0248.2009.01346.x> (2009).
18. Chase, J. M. & Myers, J. A. Disentangling the importance of ecological niches from stochastic processes across scales. *Philosophical Transactions of the Royal Society B: Biological Sciences* **366**, 2351–2363, <https://doi.org/10.1098/rstb.2011.0063> (2011).
19. Gotelli, N. J. & McCabe, D. J. Species co-occurrence: A meta-analysis of J. M. Diamond's assembly rules model. *Ecology* **83**, 2091–2096, [https://doi.org/10.1890/0012-9658\(2002\)083\[2091:SCOAMA\]2.0.CO;2](https://doi.org/10.1890/0012-9658(2002)083[2091:SCOAMA]2.0.CO;2) (2002).
20. Emerson, B. C. & Gillespie, R. G. Phylogenetic analysis of community assembly and structure over space and time. *Trends in Ecology and Evolution* **23**, 619–630, <https://doi.org/10.1016/j.tree.2008.07.005> (2008).
21. Cadotte, M., Albert, C. H. & Walker, S. C. The ecology of differences: assessing community assembly with trait and evolutionary distances. *Ecology Letters* **16**, 1234–1244, <https://doi.org/10.1111/ele.12161> (2013).
22. Kathleen Lyons, S. *et al.* Holocene shifts in the assembly of plant and animal communities implicate human impacts. *Nature* **529**, 80–83, <https://doi.org/10.1038/nature16447> (2016).
23. Pomati, F., Matthews, B., Seehausen, O. & Ibelings, B. W. Eutrophication and climate warming alter spatial (depth) co-occurrence patterns of lake phytoplankton assemblages. *Hydrobiologia* **787**, 375–385, <https://doi.org/10.1007/s10750-016-2981-6> (2017).
24. Cavender-Bares, J., Kozak, K. H., Fine, P. V. A. & Kembel, S. W. The merging of community ecology and phylogenetic biology. *Ecology Letters* **12**, 693–715, <https://doi.org/10.1111/j.1461-0248.2009.01314.x> (2009).
25. Kraft, N. J. B. *et al.* Disentangling the drivers of β diversity along latitudinal and elevational gradients. *Science* **333**, 1755–1758, <https://doi.org/10.1126/science.1208584> (2011).
26. Mayfield, M. M. & Levine, J. M. Opposing effects of competitive exclusion on the phylogenetic structure of communities. *Ecology Letters* **13**, 1085–1093, <https://doi.org/10.1111/j.1461-0248.2010.01509.x> (2010).
27. Bell, T., Newman, J. A., Silverman, B. W., Turner, S. L. & Lilley, A. K. The contribution of species richness and composition to bacterial services. *Nature* **436**, 1157–1160, <https://doi.org/10.1038/nature03891> (2005).
28. Webb, C. O., Ackerly, D. D., McPeck, M. A. & Donoghue, M. J. Phylogenies and community ecology. *Annual Review of Ecology and Systematics* **33**, 475–505, <https://doi.org/10.1146/annurev.ecolsys.33.010802.150448> (2002).
29. Monchamp, M.-E., Walser, J.-C., Pomati, F. & Spaak, P. Sedimentary DNA reveals cyanobacteria community diversity over 200 years in two peri-alpine lakes. *Applied and Environmental Microbiology* **82**, 6472–6482, <https://doi.org/10.1128/AEM.02174-16> (2016).
30. Hanson, C. A., Fuhrman, J. A., Horner-Devine, M. C. & Martiny, J. B. H. Beyond biogeographic patterns: processes shaping the microbial landscape. *Nature reviews: Microbiology* **10**, 497–506, <https://doi.org/10.1038/nrmicro2795> (2012).
31. Papke, R. T., Ramsing, N. B., Bateson, M. M. & Ward, D. M. Geographical isolation in hot spring cyanobacteria. *Environmental Microbiology* **5**, 650–659, <https://doi.org/10.1046/j.1462-2920.2003.00460.x> (2003).
32. Webb, C. O. Exploring the phylogenetic structure of ecological communities: An example for rain forest trees. *The American Naturalist* **156**, 145–155, <https://doi.org/10.1086/303378> (2000).
33. Oecd. *Eutrophication of waters. Monitoring, assessment and control. Final report, OECD cooperative programme on monitoring of inland waters (eutrophication control)*. (Environment Directorate, OECD, 1982).
34. Posch, T., Köster, O., Salcher, M. M. & Perntaler, J. Harmful filamentous cyanobacteria favoured by reduced water turnover with lake warming. *Nature Climate Change* **2**, 809–813, <https://doi.org/10.1038/nclimate1581> (2012).
35. Yankova, Y., Neuenschwander, S., Köster, O. & Posch, T. Abrupt stop of deep water turnover with lake warming: Drastic consequences for algal primary producers. *Scientific Reports* **7**, 13770–13770, <https://doi.org/10.1038/s41598-017-13159-9> (2017).
36. Mantzouki, E. *et al.* Temperature Effects Explain Continental Scale Distribution of Cyanobacterial Toxins. *Toxins (Basel)* **10**, <https://doi.org/10.3390/toxins10040156> (2018).
37. Caporaso, J. G. *et al.* PyNAST: A flexible tool for aligning sequences to a template alignment. *Bioinformatics* **26**, 266–267, <https://doi.org/10.1093/bioinformatics/btp636> (2010).
38. Edgar, R. C. UPARSE: highly accurate OTU sequences from microbial amplicon reads. *Nature methods* **10**, 996–998, <https://doi.org/10.1038/nmeth.2604> (2013).
39. McDonald, D. *et al.* An improved Greengenes taxonomy with explicit ranks for ecological and evolutionary analyses of bacteria and archaea. *The ISME Journal* **6**, 610–618, <https://doi.org/10.1038/ismej.2011.139> (2012).
40. Price, M. N., Dehal, P. S. & Arkin, A. P. FastTree 2 - Approximately maximum-likelihood trees for large alignments. *PLoS ONE* **5**, e9490–e9490, <https://doi.org/10.1371/journal.pone.0009490> (2010).
41. McMurdie, P. J. & Holmes, S. phyloseq: an R package for reproducible interactive analysis and graphics of microbiome census data. *PLoS One* **8**, e61217, <https://doi.org/10.1371/journal.pone.0061217> (2013).
42. Team, R. C. R: *A language and environment for statistical computing* (2017).
43. Schmidt, W. Über die Temperatur- und Stabilitätsverhältnisse von Seen. *Geografiska Annaler* **10**, 145–177 (1928).
44. Oksanen, J. *et al.* vegan: Community Ecology Package. R package version 2.0-10. <http://CRAN.R-project.org/package=vegan> (2013).
45. Stegen, J. C., Lin, X., Konopka, A. E. & Fredrickson, J. K. Stochastic and deterministic assembly processes in subsurface microbial communities. *The ISME Journal* **6**, 1653–1664, <https://doi.org/10.1038/ismej.2012.22> (2012).
46. Swenson, N. G. *Functional and phylogenetic ecology in R* (Springer, 2014).
47. Erickson, D. L. *et al.* Comparative evolutionary diversity and phylogenetic structure across multiple forest dynamics plots: a mega-phylogeny approach. *Frontiers in genetics* **5**, 358–358, <https://doi.org/10.3389/fgene.2014.00358> (2014).
48. Hardy, O. J. & Senterre, B. Characterizing the phylogenetic structure of communities by an additive partitioning of phylogenetic diversity. *Journal of Ecology* **95**, 493–506, <https://doi.org/10.1111/j.1365-2745.2007.01222.x> (2007).
49. Kembel, S. W. Disentangling niche and neutral influences on community assembly: assessing the performance of community phylogenetic structure tests. *Ecol Lett* **12**, 949–960, <https://doi.org/10.1111/j.1461-0248.2009.01354.x> (2009).
50. Lozupone, C. & Knight, R. UniFrac: a new phylogenetic method for comparing microbial communities. *Applied and environmental microbiology* **71**, 8228–8235, <https://doi.org/10.1128/AEM.71.12.8228-8235.2005> (2005).

Acknowledgements

This work was supported by the Swiss Enlargement Contribution, Project IZERZ0 – 142165 ‘CyanoArchive’ to P.S. in the framework of the Romanian–Swiss Research Programme.

Author Contributions

M.-E.M., F.P. and P.S. designed the study. M.-E.M. collected data and performed data analysis. M.-E.M. and F.P. wrote the manuscript, which was commented and edited by P.S.

Additional Information

Supplementary information accompanies this paper at <https://doi.org/10.1038/s41598-019-43814-2>.

Competing Interests: The authors declare no competing interests.

Publisher’s note: Springer Nature remains neutral with regard to jurisdictional claims in published maps and institutional affiliations.



Open Access This article is licensed under a Creative Commons Attribution 4.0 International License, which permits use, sharing, adaptation, distribution and reproduction in any medium or format, as long as you give appropriate credit to the original author(s) and the source, provide a link to the Creative Commons license, and indicate if changes were made. The images or other third party material in this article are included in the article’s Creative Commons license, unless indicated otherwise in a credit line to the material. If material is not included in the article’s Creative Commons license and your intended use is not permitted by statutory regulation or exceeds the permitted use, you will need to obtain permission directly from the copyright holder. To view a copy of this license, visit <http://creativecommons.org/licenses/by/4.0/>.

© The Author(s) 2019