

Serum magnesium and the risk of prediabetes: a population-based cohort study

Brenda C. T. Kieboom^{1,2,3} · Symen Ligthart¹ · Abbas Dehghan¹ · Steef Kurstjens⁴ · Jeroen H. F. de Baaij^{4,5} · Oscar H. Franco¹ · Albert Hofman^{1,6} · Robert Zietse² · Bruno H. Stricker^{1,2,3} · Ewout J. Hoorn²

Received: 8 December 2016 / Accepted: 27 January 2017 / Published online: 21 February 2017
© The Author(s) 2017. This article is published with open access at Springerlink.com

Abstract

Aims/hypothesis Previous studies have found an association between serum magnesium and incident diabetes; however, this association may be due to reverse causation, whereby diabetes may induce urinary magnesium loss. In contrast, in prediabetes (defined as impaired fasting glucose), serum glucose levels are below the threshold for urinary magnesium wasting and, hence, unlikely to influence serum magnesium levels. Thus, to study the directionality of the association between serum magnesium levels and diabetes, we investigated its association with prediabetes. We also investigated whether magnesium-regulating genes influence diabetes risk through serum magnesium levels. Additionally, we quantified the effect of insulin resistance in the association between serum magnesium levels and diabetes risk.

Electronic supplementary material The online version of this article (doi:10.1007/s00125-017-4224-4) contains peer-reviewed but unedited supplementary material, which is available to authorised users.

✉ Bruno H. Stricker
b.stricker@erasmusmc.nl

- ¹ Department of Epidemiology, Erasmus University Medical Center Rotterdam, P.O. Box 2040, 3000 CA Rotterdam, the Netherlands
- ² Department of Internal Medicine, Erasmus University Medical Center Rotterdam, Rotterdam, the Netherlands
- ³ Inspectorate for Health Care, Utrecht, the Netherlands
- ⁴ Department of Physiology, Radboud Institute for Molecular Life Sciences, Radboud University Medical Center, Nijmegen, the Netherlands
- ⁵ Department of Physiology, Anatomy and Genetics, University of Oxford, Oxford, UK
- ⁶ Department of Epidemiology, Harvard T.H. Chan School of Public Health, Boston, MA, USA

Methods Within the population-based Rotterdam Study, we used Cox models, adjusted for age, sex, lifestyle factors, comorbidities, kidney function, serum levels of electrolytes and diuretic use, to study the association between serum magnesium and prediabetes/diabetes. In addition, we performed two mediation analyses: (1) to study if common genetic variation in eight magnesium-regulating genes influence diabetes risk through serum magnesium levels; and (2) to quantify the proportion of the effect of serum magnesium levels on diabetes that is mediated through insulin resistance (quantified by HOMA-IR).

Results A total of 8555 participants (mean age, 64.7 years; median follow-up, 5.7 years) with normal glucose levels (mean ± SD: 5.46 ± 0.58 mmol/l) at baseline were included. A 0.1 mmol/l decrease in serum magnesium level was associated with an increase in diabetes risk (HR 1.18 [95% CI 1.04, 1.33]), confirming findings from previous studies. Of interest, a similar association was found between serum magnesium levels and prediabetes risk (HR 1.12 [95% CI 1.01, 1.25]). Genetic variation in *CLDN19*, *CNNM2*, *FXYD2*, *SLC41A2*, and *TRPM6* significantly influenced diabetes risk ($p < 0.05$), and for *CNNM2*, *FXYD2*, *SLC41A2* and *TRPM6* this risk was completely mediated by serum magnesium levels. We found that 29.1% of the effect of serum magnesium levels on diabetes was mediated through insulin resistance, whereas for prediabetes 13.4% was mediated through insulin resistance.

Conclusions/interpretation Low serum magnesium levels are associated with an increased risk of prediabetes and this increased risk is similar to that of diabetes. Furthermore, common variants in magnesium-regulating genes modify diabetes risk through serum magnesium levels. Both findings support a potential causal role of magnesium in the development of diabetes, where the hypothesised pathway is partly mediated through insulin resistance.

cholesterol and HDL-cholesterol were measured using an enzymatic colourimetric approach.

Measurement and assessment of anthropometrics has been described previously [15]. Briefly, blood pressure was measured twice during study visits and the average was calculated. Information on smoking habits and alcohol consumption was obtained during a home interview; smoking habits were categorised as non-smoker, former smoker and current smoker. Alcohol use was categorised into two categories: yes or no [15]. Information on prevalent stroke and coronary heart disease was determined on the date that blood was drawn from the participants via linkage with general practitioners working in the study area, and adjudicated by two medical doctors and a neurologist or cardiologist in case of disagreement [17]. Information regarding the use of diuretics was derived from linkage to pharmacy dispensing records [15]. Serum insulin was measured using an immunoassay (Roche Diagnostics) and for the majority of all participants (96.8%) fasting insulin levels were available. Insulin resistance was assessed using HOMA-IR values [18]. We used the natural logarithm (\log_e) of HOMA-IR levels +1 to account for non-normal distribution.

Genetic analysis We used a candidate gene approach to select 11 magnesium-regulating genes, which were hypothesized to play a role in the development of diabetes (see electronic supplementary material [ESM] Table 1). Lead single nucleotide polymorphisms (SNPs) in these magnesium regulating genes were identified from the literature [19–21]. Our goal was to select common genetic variations for our analysis; therefore, we only included SNPs with a minor allele frequency >10%, resulting in the following genes and corresponding SNPs being selected: *TRPM7* (rs8042919), *TRPM6* (rs2274924), *SLC41A1* (rs823154), *SLC41A2* (rs2463021), *CNNM2* (rs3740393), *CLDN19* (rs719676), *CLDN16* (rs9990270) and *FXYP2* (rs948100). Genotyping was carried out using the Illumina 550 duo and Illumina 610 quad BeadChip (Illumina, San Diego, CA, USA). For all participants that were included in this study, SNPs passed genotyping quality control, had a call rate >98% and had a Hardy–Weinberg p value $>1 \times 10^{-6}$. Data were imputed to the 1000 Genomes reference panel (phase 1, version 3) using MACH version 1.0.15/1.0.16 [22, 23]. Imputation quality for all SNPs was high (>0.97).

Assessment of outcomes In this study, we excluded prevalent cases of diabetes. Incident cases of prediabetes and type 2 diabetes were ascertained through active follow-up using general practitioners' records, hospital discharge letters and glucose measurements from Rotterdam Study visits [1]. Diabetes and prediabetes were defined according to the recent WHO guidelines [24]. Briefly, diabetes was defined as fasting blood glucose ≥ 7.0 mmol/l, a non-fasting blood glucose

≥ 11.1 mmol/l (in the absence of fasting samples) or the use of blood glucose lowering medication (including oral blood glucose lowering medication such as metformin). Prediabetes was defined as a fasting blood glucose between 6.0 and 7.0 mmol/l or a non-fasting blood glucose between 7.7 and 11.1 mmol/l (in the absence of fasting samples). For the majority of all participants (96.8%) fasting blood glucose samples were available and for the remaining, a random non-fasting blood glucose level was used. Information regarding the use of blood glucose lowering medication was derived from both structured home interviews and linkage to pharmacy dispensing records [15]. All outcomes of prediabetes and diabetes were adjudicated by two independent study physicians. In case of disagreement, consensus was sought with an endocrinologist. Follow-up data was complete until 1 January 2012.

Statistical analyses Means, SD and percentages with frequency were used to report continuous and discrete variables. The relationship between serum magnesium levels and prediabetes was modelled using restricted cubic splines, using three knots, and was found to be linear. Therefore, we used serum magnesium as a continuous variable in multivariate Cox proportional hazards regression models to examine the relationship of serum magnesium levels with incident diabetes and prediabetes. Additionally, we studied the relationship between hypomagnesaemia (defined as serum magnesium ≤ 0.72 mmol/l) and incident diabetes and prediabetes. Follow-up time was calculated from the date that blood was drawn until the date of death, loss to follow-up or end of the study. The proportional hazards assumption was tested by plotting the \log_{10} minus \log_{10} survival curve and visually examining the curves, with no evidence that the assumption was violated [25].

We performed two mediation analyses: (1) quantifying the role of insulin resistance in the association of serum magnesium levels with diabetes and prediabetes; (2) to study if genetic variation in magnesium regulating genes associates with diabetes and prediabetes through serum magnesium levels. To do so, we used the logistic model as reported by Baron and Kenny [26]. We calculated the standardised indirect effect, which is a measure for the degree of mediation through the mediator, and tested for significance using bootstrapping procedures ($n = 1000$) [27]. For all analyses on diabetes we used a study population including all participants without diabetes at baseline; for the analyses on prediabetes we included all participants with normal glucose levels at baseline.

Missing data in covariables (present in 0.0–1.4%) were handled by single imputation using an expectation–maximization algorithm [28]. All analyses were repeated on complete cases to check for potential differences. With the exception of the baseline characteristics, results are reported

for imputed data. We considered a two-sided p value <0.05 as statistically significant. Data were analysed using SPSS Statistics version 21.0 (IBM, Armonk, NY, USA) and R version 3.1.2. (The R Foundation for Statistical Computing, Vienna, Austria).

Sensitivity analyses To test the robustness of our findings, we performed several sensitivity analyses. First, we repeated our analysis on prediabetes using electrolytes other than magnesium (sodium, potassium, calcium and phosphate), to rule out that the observed association between serum magnesium levels and prediabetes is caused by a coexisting electrolyte disorder. In the second sensitivity analyses, we studied whether participants without a separate diagnosis date of prediabetes could have influenced our effect estimates. In these individuals, both the diagnosis of prediabetes and diabetes was regarded as being made on the same day, as no separate date of prediabetes diagnosis could be determined. Therefore, where the date of prediabetes diagnosis was missing, we imputed this date and repeated the analysis on prediabetes using these new dates. In the third sensitivity analysis, we excluded all participants with an eGFR below $60 \text{ ml min}^{-1} [1.73 \text{ m}^2]^{-1}$ to exclude the possibility that impaired kidney function could have impacted our results. In the fourth sensitivity analysis, we excluded all participants with hypomagnesaemia and hypermagnesaemia to confirm that our results were not driven by these extremes. In the final sensitivity analysis, we studied if the association between serum magnesium and diabetes risk could have been explained by proton pump inhibitor use as proton pump inhibitors have been previously associated with hypomagnesaemia [29].

Results

Baseline characteristics Our total study population comprised 8555 participants (Fig. 1). Table 1 shows the baseline characteristics of our study population. The mean age was 64.7 years and 57.8% were women. Participants with prevalent prediabetes more often had a history of smoking, hypertension, coronary heart disease, and used diuretics more often. The range of serum magnesium in the total population was 0.34–1.17 mmol/l. For participants with normal glucose levels at baseline, this range was 0.46–1.17 mmol/l, whilst for participants with prediabetes at baseline, this range was 0.34–1.20 mmol/l.

Association between serum magnesium levels and incident diabetes Among the 8555 participants without diabetes at baseline, 806 cases of incident diabetes were identified over a median follow-up of 6.7 years. Table 2 shows the association between serum magnesium levels and incident diabetes. We

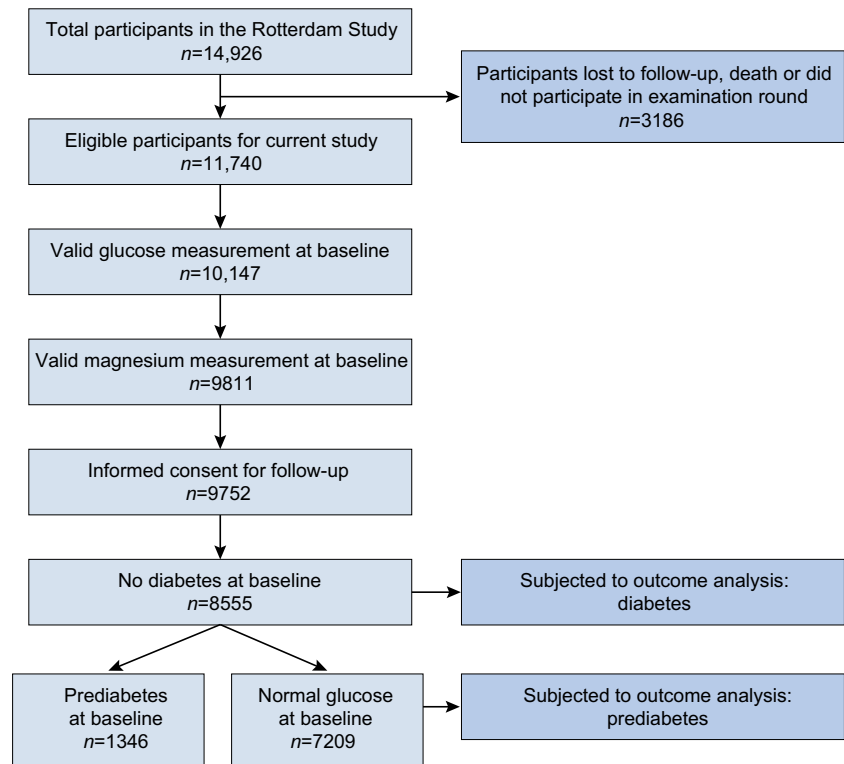
found that a 0.1 mmol/l decrease in serum magnesium levels was associated with an increase in diabetes risk (HR 1.21 [95% CI 1.07, 1.37]). After adjustment for lifestyle factors, comorbidities and other electrolytes this association persisted, but was slightly attenuated (HR 1.18 [95% CI 1.04, 1.33]). Participants with hypomagnesaemia had an increased diabetes risk before and after adjustment for confounders (HR 2.12 [95% CI 1.38, 3.28] and HR 1.79 [95% CI 1.16, 2.77], respectively). We found no evidence of effect modification by sex (p for interaction = 0.36).

Association between serum magnesium levels and incident prediabetes Among the 7209 participants with blood glucose levels within the normal range (fasting blood glucose <6.0 mmol/l or non-fasting blood glucose <7.7 mmol/l) at baseline, 1120 cases of incident prediabetes were identified over a median follow-up of 5.7 years. Table 2 shows the association between serum magnesium levels and incident prediabetes. We found that a 0.1 mmol/l decrease in serum magnesium levels was associated with an increased risk of prediabetes before adjustment (HR 1.14 [95% CI 1.02, 1.27]) and after adjustment (HR 1.12 [95% CI 1.01, 1.25]) for confounders. Participants with hypomagnesaemia had an increased diabetes risk before adjustment for confounders (HR 1.72 [95% CI 1.09, 2.71]). After adjustment for confounders, this risk was attenuated and was no longer statistically significant (HR 1.44 [95% CI 0.91, 2.27]). We found no evidence of effect modification by sex (p for interaction = 0.18).

Genetic risk factors The selected common genetic variants were mainly located in introns (ESM Table 1). For five SNPs (rs719676, rs3740393, rs948100, rs2463021 and rs2274924), we found a significant association with serum magnesium levels (Table 3). For four SNPs (rs3740393, rs948100, rs2463021 and rs2274924), we found an indirect effect on diabetes risk. For rs719676, we found a significant direct effect on diabetes risk (OR 0.84 [95% CI 0.74, 0.96]), but no evidence that this effect was mediated through serum magnesium levels. The same analysis was repeated on prediabetes risk, but only a significant direct effect of rs719676 on prediabetes was observed (OR 0.88 [95% CI 0.78, 0.98]). The other selected gene variants were not significantly associated with prediabetes.

Association between serum magnesium levels and insulin resistance The association between serum magnesium levels, \log_e HOMA-IR levels and diabetes is shown in Fig. 2a. We confirmed that serum magnesium levels were significantly associated with \log_e HOMA-IR levels and also that \log_e HOMA-IR levels were significantly associated with the risk of diabetes. When studying the direct effect of serum magnesium levels on the risk of diabetes adjusted for \log_e

Fig. 1 Flowchart of the study population. Of the 11,740 eligible participants, 3185 participants were excluded because of missing data in magnesium or glucose measurements at baseline, no informed consent or prevalent diabetes mellitus. This resulted in a total study population of 8555 participants, which could be further divided into 7209 participants with normal glucose level at baseline and 1346 participants with prediabetes at baseline



HOMA-IR levels, the effect estimates were attenuated and the association was no longer statistically significant. The indirect effect of serum magnesium levels on diabetes risk, as mediated by \log_e HOMA-IR levels, was significant with an odds ratio of 1.05 per 0.1 mmol/l decrease in serum magnesium levels. The calculated percentage of mediation was 29.1%. Fig. 2b shows the association between serum magnesium levels, \log_e HOMA-IR levels and prediabetes. We found that serum magnesium levels were significantly associated with \log_e HOMA-IR levels, within this group and that \log_e HOMA-IR levels were also significantly associated with the risk of prediabetes, a finding similar to that of the association with diabetes. For the association with prediabetes, the calculated percentage of mediation was 13.4%.

Sensitivity analyses We found that, besides magnesium, no other electrolyte was associated with the risk of prediabetes (Table 4). For 235 participants, we did not have a separate date for prediabetes diagnosis, therefore this date was imputed. For 25 participants, data were excluded from this sensitivity analysis as the imputed prediabetes diagnosis date was before serum magnesium measurement. The analysis on imputed prediabetes diagnosis date yielded similar results compared with that using the diabetes diagnosis date (Fig. 3b). In the subsequent two sensitivity analyses we excluded participants with an eGFR below $60 \text{ ml min}^{-1} [1.73 \text{ m}^2]^{-1}$ and participants with hypomagnesaemia or hypermagnesaemia (Fig. 3). These analyses yielded similar results as in our main analyses. In the final analysis, we found that the addition of proton pump

inhibitor use to our analysis on diabetes and prediabetes did not alter the association (data not shown).

Discussion

In this large population-based cohort, we found that over a median follow-up of almost 6 years, low serum magnesium levels are associated with an increased risk of prediabetes, with comparable risk estimates to that of diabetes. Furthermore, we found that common genetic variants in magnesium-regulating genes influence diabetes risk and that this risk is mediated through serum magnesium levels.

One strength of our study is that we thoroughly investigated the directionality of the association between serum magnesium and diabetes. Serum magnesium has already been associated with diabetes [12, 13]. However, increased renal magnesium wasting as a result of uncontrolled diabetes could lead to low serum magnesium levels [30]. This reversed causation may explain the observed association between serum magnesium and diabetes. If indeed low serum magnesium levels are only the result of uncontrolled diabetes, rather than a potential cause, one would not expect to find an effect of magnesium supplementation on diabetes risk and there would be no need to design a randomised controlled trial. Our study provides more evidence that magnesium may indeed influence diabetes risk, as we found similar associations for prediabetes as diabetes. The association with prediabetes is unlikely to be caused by reversed causation as glucose levels are not high

Table 1 Baseline characteristics of the study population

Characteristic	Total population <i>N</i> = 8555	Prevalent normoglycaemia <i>N</i> = 7209	Prevalent prediabetes <i>N</i> = 1346
Age, years	64.7 (9.7)	64.3 (9.7)	66.6 (9.4)
Women, <i>n</i> (%)	4949 (57.8)	4271 (59.2)	678 (50.4)
Body mass index, kg/m ²	27.0 (4.0)	26.7 (3.9)	28.5 (4.4)
Smoking, <i>n</i> (valid per cent)			
Never	2647 (31.2)	2279 (31.9)	368 (27.4)
Former	3933 (46.3)	3272 (45.7)	661 (49.3)
Current	1914 (22.5)	1602 (22.4)	312 (23.3)
Alcohol use, <i>n</i> (valid per cent)	7297 (85.9)	6136 (85.8)	1161 (86.6)
Total cholesterol, mmol/l	5.76 (1.01)	5.76 (1.01)	5.74 (1.02)
HDL cholesterol, mmol/l	1.43 (0.41)	1.44 (0.41)	1.33 (0.40)
History of hypertension, <i>n</i> (valid per cent)	5078 (60.1)	4072 (57.2)	1006 (75.2)
History of stroke, <i>n</i> (valid per cent)	245 (2.9)	202 (2.8)	43 (3.2)
History of CHD, <i>n</i> (valid per cent)	516 (6.1)	409 (5.8)	107 (8.1)
eGFR (CKD-EPI), ml min ⁻¹ [1.73 m ²] ⁻¹	79.7 (14.6)	80.0 (14.4)	78.3 (15.2)
Serum calcium, mmol/l	2.43 (0.10)	2.43 (0.10)	2.44 (0.10)
Serum potassium, mmol/l	4.35 (0.34)	4.36 (0.33)	4.34 (0.36)
Use of diuretics, <i>n</i> (%)	703 (8.2)	528 (7.3)	175 (13.0)
Serum glucose, mmol/l	5.46 (0.58)	5.30 (0.45)	6.32 (0.47)
Serum insulin, pmol/l	83.8 (63.0)	78.6 (56.0)	111.3 (84.8)
Serum magnesium, mmol/l	0.85 (0.06)	0.85 (0.06)	0.84 (0.06)
Hypomagnesaemia ^a , <i>n</i> (%)	131 (1.5)	92 (1.3)	39 (2.9)
Hypermagnesaemia, <i>n</i> (%)	185 (2.2)	155 (2.2)	30 (2.2)

Data are presented as *n* (%), *n* (valid per cent) or mean (SD)

Values are shown for non-imputed data

n values for certain variables do not necessarily match the total cohort number for each category because of missing data as a result of: (1) no answer provided during interview (smoking status and alcohol use); (2) unavailable blood pressure measurements during the examination round (history of hypertension); or (3) inability to link the study database to the General Practitioners' database or registries and, therefore, not being able to ascertain disease status (history of stroke and coronary heart disease). For variables with missing data, valid per cent is given

^a Serum magnesium ≤ 0.72 mmol/l

^b Serum magnesium ≥ 0.97 mmol/l

Table 2 Association between serum magnesium levels and incident diabetes and prediabetes

Variable	At risk (<i>N</i>)	Cases (<i>N</i>)	Follow-up (person-years)	HR (95% CI)		
				Model 1	Model 2	Model 3
Diabetes						
Per 0.1 mmol/l decrease	8555	806	67,296	1.21 (1.07, 1.37)	1.17 (1.04, 1.32)	1.18 (1.04, 1.33)
No hypomagnesaemia	8424	785	66,421	1.00 (reference)	1.00 (reference)	1.00 (reference)
Hypomagnesaemia	131	21	875	2.12 (1.38, 3.28)	1.80 (1.17, 2.78)	1.79 (1.16, 2.77)
Prediabetes						
Per 0.1 mmol/l decrease	7209	1120	54,243	1.14 (1.02, 1.27)	1.13 (1.01, 1.25)	1.12 (1.01, 1.25)
No hypomagnesaemia	7117	1101	53,667	1.00 (reference)	1.00 (reference)	1.00 (reference)
Hypomagnesaemia	92	19	576	1.72 (1.09, 2.71)	1.51 (0.96, 2.37)	1.44 (0.91, 2.27)

Model 1: adjusted for age, age², sex

Model 2: model 1+BMI, smoking status, alcohol use and total cholesterol:HDL-cholesterol ratio, history of hypertension, history of stroke and history of coronary heart disease

Model 3: model 2 + eGFR (CKD-EPI), serum calcium, serum potassium and use of diuretics

Table 3 Mediation analysis for magnesium-regulating genes

Gene	SNP	Effect on serum magnesium levels ^a β, mmol/l (95% CI)	Diabetes N = 7428		Prediabetes N = 6267	
			Direct effect ^b OR (95% CI)	Indirect effect ^c OR (95% CI)	Direct effect ^d OR (95% CI)	Indirect effect ^e OR (95% CI)
<i>CLDN16</i>	rs9990270	0.001 (−0.001, 0.002)	0.92 (0.83, 1.03)	1.00 (1.00, 1.00)	0.99 (0.90, 1.09)	1.00 (1.00, 1.00)
<i>CLDN19</i>	rs719676	0.002 (0.000, 0.005)*	0.84 (0.74, 0.96)*	1.00 (0.99, 1.00)	0.88 (0.78, 0.98)*	1.00 (0.99, 1.00)
<i>CNNM2</i>	rs3740393	0.005 (0.003, 0.008)*	0.97 (0.82, 1.15)	0.99 (0.98, 1.00)*	1.07 (0.94, 1.23)	1.00 (0.99, 1.00)
<i>FXYD2</i>	rs948100	−0.004 (−0.006, −0.001)*	1.12 (0.94, 1.33)	1.01 (1.00, 1.02)*	1.14 (0.98, 1.32)	1.00 (1.00, 1.01)
<i>SLC41A1</i>	rs823154	0.000 (−0.001, 0.002)	0.94 (0.84, 1.05)	1.00 (1.00, 1.00)	0.95 (0.86, 1.04)	1.00 (1.00, 1.00)
<i>SLC41A2</i>	rs2463021	−0.004 (−0.007, 0.000)*	1.00 (0.82, 1.22)	1.01 (1.00, 1.02)*	0.96 (0.80, 1.14)	1.00 (1.00, 1.01)
<i>TRPM6</i>	rs2274924	−0.004 (−0.006, −0.001)*	1.01 (0.87, 1.16)	1.01 (1.00, 1.02)*	1.07 (0.94, 1.21)	1.00 (1.00, 1.01)
<i>TRPM7</i>	rs8042919	0.002 (−0.001, 0.005)	0.95 (0.78, 1.15)	1.00 (0.99, 1.00)	1.05 (0.90, 1.23)	1.00 (0.99, 1.00)

^a Effect of gene on serum magnesium level (mmol/l), per allele increase

^b Direct effect (OR) of gene on diabetes, adjusted for serum magnesium levels

^c Indirect effect (OR) of gene on diabetes, mediated by serum magnesium levels

^d Direct effect (OR) of gene on prediabetes, adjusted for serum magnesium levels

^e Indirect effect (OR) of gene on prediabetes, mediated by serum magnesium levels

* $p < 0.05$

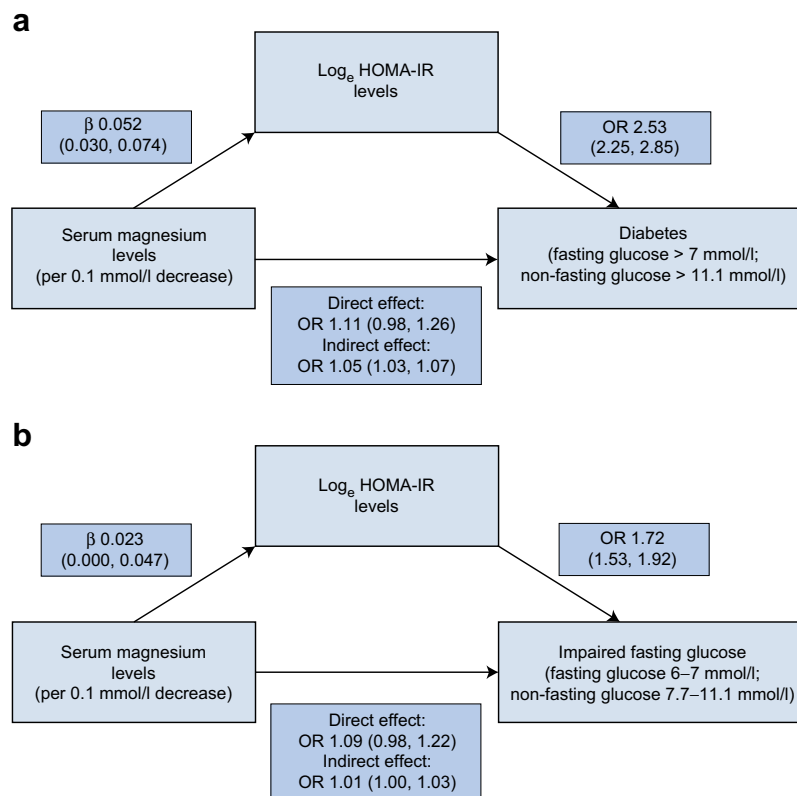


Fig. 2 The role of insulin sensitivity in the association between serum magnesium levels and prediabetes/diabetes. The association was modelled using a mediation analysis, with insulin resistance calculated as \log_e HOMA-IR levels. **(a)** The association with diabetes was studied in participants without diabetes at baseline. The direct effect of serum magnesium levels on incident diabetes was found not to be significant when adjusting for \log_e HOMA-IR levels. The indirect effect, which

represents the effect of serum magnesium levels on diabetes as mediated by \log_e HOMA-IR levels, was found to be significant. **(b)** The association with prediabetes was studied in participants with normal blood glucose at baseline. The direct effect of serum magnesium levels on incident prediabetes was found not to be significant when adjusting for \log_e HOMA-IR levels. The indirect effect was found to be significant

Table 4 Sensitivity analysis using magnesium and other electrolytes as determinants

Determinant	Normal glucose to prediabetes	
	HR (95% CI)	<i>p</i> value
Serum magnesium (per 0.1 mmol/l decrease)	1.12 (1.01, 1.25)	0.034
Serum sodium (per 1 mmol/l decrease)	1.01 (0.99, 1.03)	0.297
Serum potassium (per 0.1 mmol/l decrease)	1.00 (0.98, 1.02)	0.821
Serum calcium (per 0.1 mmol/l decrease)	1.04 (0.98, 1.11)	0.218
Serum phosphate (per 0.1 mmol/l decrease)	1.03 (0.98, 1.07)	0.216

Model 3 (adjusted for age, age², sex, BMI, smoking status, alcohol use, total cholesterol:HDL-cholesterol ratio, history of hypertension, history of stroke, history of coronary heart disease, eGFR (CKD-EPI), serum calcium, serum potassium and use of diuretics was used for all analyses

enough to cause increased urinary magnesium wasting. Additionally, we found that magnesium-regulating genes associate with diabetes risk, further demonstrating that reverse causation is not likely to play a role, since diabetes status cannot alter genetic makeup. Another strength of our study is the detailed classification of diabetes and prediabetes, using a combination of prospectively gathered data that included the medical records of hospitals and general practitioners, electronic linkage with pharmacy dispensing records in the study area and standardised blood glucose measurements during visits to the study centre. This comprehensive assessment reduces potential bias resulting from misclassification. Furthermore, our study used a mediation analysis; this type of analysis goes beyond traditional analyses as it allows for a more causal interpretation of data, when certain assumptions are met [31]. The limitation of this type of analysis is directly linked to these assumptions, one of which is that there is no unmeasured confounding in the relationship between the mediator and the outcome. This assumption is difficult to check as unmeasured confounding can always play a role in observational data. However, we have adjusted our analysis for many potential confounders, which only slightly attenuated the effect estimates. Therefore, it is unlikely that the association between serum magnesium and diabetes risk is due to residual confounding, as this unknown confounder must be stronger and more imbalanced than all the confounders used in

the current study. A second limitation of our study is that participants of the Rotterdam Study are predominantly of European descent. Previous studies demonstrated a lack of association between serum magnesium levels and diabetes risk in black participants [12], but we were unable to stratify on ethnicity. Another limitation of our study is the use of a single measurement of serum magnesium. Consequently, we were unable to study if changes in serum magnesium levels over time might influence diabetes risk. However, in a previous study serum magnesium concentrations measured 1 year apart were found to strongly correlate [32].

In combination with association directionality, we also studied the pathway by which serum magnesium levels may influence prediabetes and diabetes risk and found evidence of a dominant role of insulin resistance. A previous study demonstrated an effect of serum magnesium levels on insulin resistance [2]. However, the mediating effect of serum magnesium levels on diabetes through insulin resistance was not quantified. We found that approximately 29% of the effect of serum magnesium levels on diabetes and approximately 13% of the effect on prediabetes is mediated through insulin resistance. This partial mediation confirms the results of the Atherosclerosis Risk in Communities (ARIC) study, which found that the effect of serum magnesium levels on diabetes risk remained after adjusting for fasting glucose levels [12]. The remaining effect of serum magnesium levels on diabetes

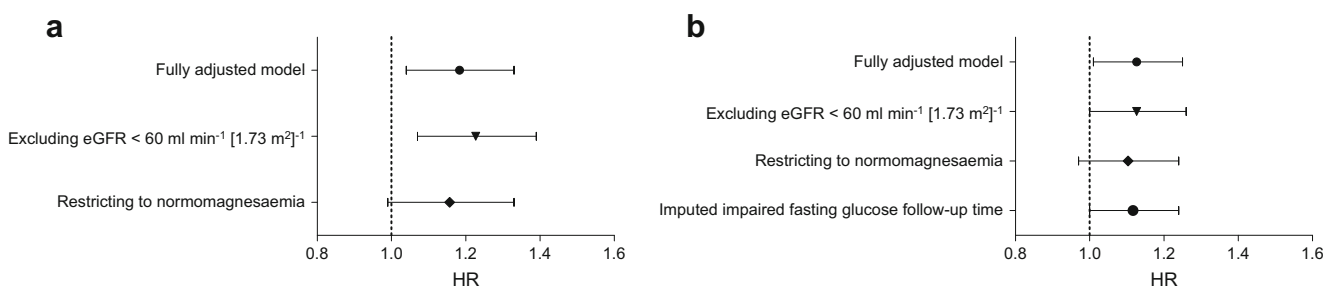


Fig. 3 Sensitivity analyses. For both the analysis on (a) diabetes and (b) prediabetes we performed several sensitivity analyses, using the fully adjusted model (model 3). In the first analysis, we excluded all participants with an eGFR below 60 ml min⁻¹ [1.73 m²]⁻¹. In the second analysis, we excluded all participants with hypomagnesaemia or

hypermagnesaemia. For the analysis on prediabetes we performed an additional sensitivity analyses to study if misclassified prediabetes cases (i.e. those without a prediabetes diagnosis date) could have influenced our results

and prediabetes risk could occur via insulin secretion or through its impact on insulin signalling [33]. The effect of magnesium on insulin metabolism and glycaemic control, in both patients with diabetes and without diabetes, has been studied in several randomised clinical trials. A meta-analysis of 370 patients with type 2 diabetes found that oral magnesium supplementation of 360 mg/day could influence serum magnesium levels, although not linearly, after a median of 12 weeks. This oral magnesium supplementation also significantly lowered fasting glucose levels, but did not influence long-term glycaemic control [34]. In another trial, the effect of 16 weeks of 2.5 g magnesium chloride administration daily was studied in type 2 diabetes patients with decreased serum magnesium levels at baseline. Magnesium supplementation significantly increased serum magnesium concentration and significantly reduced fasting glucose levels, fasting insulin levels and HbA_{1c} levels compared with the control group [35]. Furthermore, in obese patients without hypomagnesaemia but with decreased insulin sensitivity at baseline, a positive effect of supplementation with 365 mg magnesium per day was observed. However, this supplementation only increased ionised magnesium levels and not total serum magnesium levels [36]. The effect of magnesium supplementation on insulin sensitivity was less pronounced in patients with normomagnesaemia. However, a positive effect could still be observed in these patients, supporting our finding of a linear association between serum magnesium levels and prediabetes risk.

We found that five previously identified magnesium-regulating genes were significantly associated with serum magnesium levels and that these genes were also associated with diabetes risk. We, hereby, replicate the findings from previous studies on the effect of *TRPM6*, *SLC41A2* and *CLDN19* on diabetes risk [20, 21]. The effect of genetic variation in *TRPM6* and *SLC41A2* was found to be mediated through serum magnesium levels. Variation in *TRPM6* can alter serum magnesium levels, as it has an essential role in magnesium reabsorption within the distal convoluted tubule [37] and *SLC41A2* is important for mediated magnesium transport across the plasma membrane [38]. *CLDN19* was found to associate with diabetes risk independently from serum magnesium levels. *CLDN19* is highly expressed in renal tubules where it influences paracellular magnesium transport. However, *CLDN19* has also been found in extra-renal tissues, including peripheral neurons where it was found to influence the pore selectivity of tight junctions [39]. Therefore, a magnesium-independent role for *CLDN19* in diabetes risk could be proposed since alterations in tight junctions have previously been linked with diabetes [40]. Besides confirming the role of these three genes in the association between magnesium and diabetes, we also identified new associations between two other magnesium-regulating genes (*CNNM2* and *FXYD2*) and diabetes risk,

which were also mediated through serum magnesium levels. *CNNM2* is thought to play a role in intracellular magnesium sensing. However, it is still unclear how this may lead to alterations in magnesium transport and, thus, alterations in serum magnesium levels [37]. *FXYD2* encodes the γ -subunit of the Na⁺–K⁺-ATPase on the basolateral membrane of the distal convoluted tubule, where it drives paracellular magnesium transport through maintenance of the membrane potential [41]. At present, these findings have little impact on clinical or population health but they do provide more grounds for the role of magnesium in the pathogenesis of diabetes since slight alterations in serum magnesium levels, caused by common genetic variation in magnesium-handling genes, were found to impact diabetes risk. As expected with common genetic variants, the observed ORs were small. As the effect of magnesium on prediabetes is less pronounced than its effect on diabetes, we also expected smaller effects of magnesium-regulating genes on prediabetes risk. A post hoc power calculation showed that we had little power (2.9–17.2%) to detect significant differences in the mediation analysis on prediabetes; therefore, it is not surprising that we did not find significant associations with prediabetes for all magnesium-regulating genes.

Conclusions In conclusion, we found that low serum magnesium levels are associated with an increased risk of prediabetes, with similar effect estimates as compared with diabetes. The effect of serum magnesium on prediabetes and diabetes risk is partly mediated through insulin resistance. Furthermore, common genetic variation in magnesium regulating genes *TRPM6*, *CLDN19*, *SLC41A2*, *CNNM2* and *FXYD2* significantly modify the risk of diabetes through serum magnesium levels. Both findings support a potential causal role of magnesium in the development of diabetes and warrant future randomised controlled trials to study the effect of long-term magnesium supplementation on diabetes risk.

Acknowledgements The dedication, commitment and contribution of inhabitants, general practitioners and pharmacists of the Ommoord district to the Rotterdam Study are gratefully acknowledged. The authors gratefully acknowledge the valuable methodological contributions of S. Swanson (Department of Epidemiology, Erasmus MC, University Medical Center, Rotterdam, the Netherlands) regarding the causal mediation analysis.

Data availability Because of restrictions based on privacy regulations and informed consent of the participants, data cannot be made freely available in a public repository. Data can be obtained upon request. Requests should be directed towards the management team of the Rotterdam Study (secretariat.epi@erasmusmc.nl), which has a protocol for approving data requests.

Funding The Rotterdam Study is supported by the Erasmus Medical Centre and Erasmus University Rotterdam; the Netherlands Organisation

for Scientific Research (NWO); the Netherlands Organisation for Health Research and Development (ZonMw); the Research Institute for Diseases in the Elderly (RIDE); the Netherlands Genomics Initiative (NGI); the Ministry of Education, Culture and Science, the Ministry of Health, Welfare and Sports; the European Commission (DG XII); and the Municipality of Rotterdam. None of the funders had any role in the design and conduct of the study; collection, management, analysis, and interpretation of the data; and preparation, review, or approval of the manuscript.

Duality of interest statement OHF works in ErasmusAGE, a centre for ageing research across the life course funded by Nestlé Nutrition (Nestec Ltd.); Metagenics Inc.; and AXA. Nestlé Nutrition (Nestec Ltd.); Metagenics Inc; and AXA had no role in design and conduct of the study; collection, management, analysis and interpretation of the data; and preparation, review, and approval of the study. JHFdB receives support from the Netherlands Organisation for Scientific Research (Rubicon 825.14.021) and the Dutch Kidney Foundation (Kolff 14OKG17). All other authors declare that there is no duality of interest associated with this manuscript.

Contribution statement BCTK was lead author, collected the data, performed the data analyses and wrote the manuscript. SL was involved in data collection, data analysis and report writing. AD contributed to the data collection, data analysis and report writing. OHF, AH and BHS were principal investigators that designed the study, collected the data and were involved in report writing. SK and JHFdB made the figures and were involved in the data analysis and report writing. RZ took part in the study design and report writing. EJH was responsible for the overall supervision and contributed to the data analysis and report writing. All authors had access to the data, commented on the manuscript drafts and approved the final version submitted. BHS is the guarantor of this work.

Open Access This article is distributed under the terms of the Creative Commons Attribution 4.0 International License (<http://creativecommons.org/licenses/by/4.0/>), which permits unrestricted use, distribution, and reproduction in any medium, provided you give appropriate credit to the original author(s) and the source, provide a link to the Creative Commons license, and indicate if changes were made.

References

- Ligthart S, van Herpt TT, Leening MJ et al (2015) Lifetime risk of developing impaired glucose metabolism and eventual progression from prediabetes to type 2 diabetes: a prospective cohort study. *Lancet Diabetes Endocrinol* 4:44–51
- Yajnik CS, Smith RF, Hockaday TD, Ward NI (1984) Fasting plasma magnesium concentrations and glucose disposal in diabetes. *Br Med J (Clin Res Ed)* 288:1032–1034
- Barbagallo M, Dominguez LJ, Galioto A et al (2003) Role of magnesium in insulin action, diabetes and cardio-metabolic syndrome X. *Mol Asp Med* 24:39–52
- Nadler JL, Buchanan T, Natarajan R, Antonipillai I, Bergman R, Rude R (1993) Magnesium deficiency produces insulin resistance and increased thromboxane synthesis. *Hypertension* 21:1024–1029
- Schulze MB, Schulz M, Heidemann C, Schienkiewitz A, Hoffmann K, Boeing H (2007) Fiber and magnesium intake and incidence of type 2 diabetes: a prospective study and meta-analysis. *Arch Intern Med* 167:956–965
- Song Y, Manson JE, Buring JE, Liu S (2004) Dietary magnesium intake in relation to plasma insulin levels and risk of type 2 diabetes in women. *Diabetes Care* 27:59–65
- Kim DJ, Xun P, Liu K et al (2010) Magnesium intake in relation to systemic inflammation, insulin resistance, and the incidence of diabetes. *Diabetes Care* 33:2604–2610
- Lopez-Ridaura R, Willett WC, Rimm EB et al (2004) Magnesium intake and risk of type 2 diabetes in men and women. *Diabetes Care* 27:134–140
- Hruby A, Meigs JB, O'Donnell CJ, Jacques PF, McKeown NM (2014) Higher magnesium intake reduces risk of impaired glucose and insulin metabolism and progression from prediabetes to diabetes in middle-aged Americans. *Diabetes Care* 37:419–427
- Rodriguez-Moran M, Simental Mendia LE, Zambrano Galvan G, Guerrero-Romero F (2011) The role of magnesium in type 2 diabetes: a brief based-clinical review. *Magnes Res* 24:156–162
- Hopping BN, Erber E, Grandinetti A, Verheus M, Kolonel LN, Maskarinec G (2010) Dietary fiber, magnesium, and glycemic load alter risk of type 2 diabetes in a multiethnic cohort in Hawaii. *J Nutr* 140:68–74
- Kao WH, Folsom AR, Nieto FJ, Mo JP, Watson RL, Brancati FL (1999) Serum and dietary magnesium and the risk for type 2 diabetes mellitus: the Atherosclerosis Risk in Communities Study. *Arch Intern Med* 159:2151–2159
- Everett CJ, King DE (2006) Serum magnesium and the development of diabetes. *Nutrition* 22:679
- Gommers LM, Hoenderop JG, Bindels RJ, de Baaij JH (2016) Hypomagnesemia in type 2 diabetes: a vicious circle? *Diabetes* 65:3–13
- Hofman A, Brusselle GG, Darwish Murad S et al (2015) The Rotterdam Study: 2016 objectives and design update. *Eur J Epidemiol* 30:661–708
- Levey AS, Stevens LA, Schmid CH et al (2009) A new equation to estimate glomerular filtration rate. *Ann Intern Med* 150:604–612
- Leening MJ, Kavousi M, Heeringa J et al (2012) Methods of data collection and definitions of cardiac outcomes in the Rotterdam Study. *Eur J Epidemiol* 27:173–185
- Matthews DR, Hosker JP, Rudenski AS, Naylor BA, Treacher DF, Turner RC (1985) Homeostasis model assessment: insulin resistance and beta-cell function from fasting plasma glucose and insulin concentrations in man. *Diabetologia* 28:412–419
- Meyer TE, Verwoert GC, Hwang SJ et al (2010) Genome-wide association studies of serum magnesium, potassium, and sodium concentrations identify six loci influencing serum magnesium levels. *PLoS Genet* 6, e1001045
- Chan KH, Chacko SA, Song Y et al (2015) Genetic variations in magnesium-related ion channels may affect diabetes risk among African American and Hispanic American women. *J Nutr* 145: 418–424
- Song Y, Hsu YH, Niu T, Manson JE, Buring JE, Liu S (2009) Common genetic variants of the ion channel transient receptor potential membrane melastatin 6 and 7 (TRPM6 and TRPM7), magnesium intake, and risk of type 2 diabetes in women. *BMC Med Genet* 10:4
- Li Y, Willer C, Sanna S, Abecasis G (2009) Genotype imputation. *Annu Rev Genomics Hum Genet* 10:387–406
- Li Y, Willer CJ, Ding J, Scheet P, Abecasis GR (2010) MaCH: using sequence and genotype data to estimate haplotypes and unobserved genotypes. *Genet Epidemiol* 34:816–834
- World Health Organization (2006) Definition and diagnosis of diabetes mellitus and intermediate hyperglycemia: report of a WHO/IDF consultation. Available from www.idf.org/webdata/docs/WHO_IDF_definition_diagnosis_of_diabetes.pdf, accessed 2 February 2017
- Hess KR (1995) Graphical methods for assessing violations of the proportional hazards assumption in Cox regression. *Stat Med* 14: 1707–1723

26. Baron RM, Kenny DA (1986) The moderator mediator variable distinction in social psychological-research—conceptual, strategic, and statistical considerations. *J Pers Soc Psychol* 51:1173–1182
27. Hayes AF (2009) Beyond Baron and Kenny: statistical mediation analysis in the new millennium. *Commun Monogr* 76:408–420
28. Dempster AP, Laird NM, Rubin DB (1977) Maximum likelihood from incomplete data Via Em Algorithm. *J Roy Stat Soc B Met* 39:1–38
29. Kieboom BC, Kieft-de Jong JC, Eijgelsheim M et al (2015) Proton pump inhibitors and hypomagnesemia in the general population: a population-based cohort study. *Am J Kidney Dis* 66:775–782
30. Tosiello L (1996) Hypomagnesemia and diabetes mellitus. A review of clinical implications. *Arch Intern Med* 156:1143–1148
31. Imai K, Keele L, Tingley D (2010) A general approach to causal mediation analysis. *Psychol Methods* 15:309–334
32. Ishimura E, Okuno S, Yamakawa T, Inaba M, Nishizawa Y (2007) Serum magnesium concentration is a significant predictor of mortality in maintenance hemodialysis patients. *Magnes Res* 20:237–244
33. Gunther T (2010) The biochemical function of Mg^{2+} in insulin secretion, insulin signal transduction and insulin resistance. *Magnes Res* 23:5–18
34. Song Y, He K, Levitan EB, Manson JE, Liu S (2006) Effects of oral magnesium supplementation on glycaemic control in type 2 diabetes: a meta-analysis of randomized double-blind controlled trials. *Diabet Med* 23:1050–1056
35. Rodriguez-Moran M, Guerrero-Romero F (2003) Oral magnesium supplementation improves insulin sensitivity and metabolic control in type 2 diabetic subjects: a randomized double-blind controlled trial. *Diabetes Care* 26:1147–1152
36. Mooren FC, Kruger K, Volker K, Golf SW, Wadeuhl M, Kraus A (2011) Oral magnesium supplementation reduces insulin resistance in non-diabetic subjects - a double-blind, placebo-controlled, randomized trial. *Diabetes Obes Metab* 13:281–284
37. Viering DH, de Baaij JH, Walsh SB, Kleta R, Bockenhauer D (2016) Genetic causes of hypomagnesemia, a clinical overview. *Pediatr Nephrol*. doi:10.1007/s00467-016-3416-3
38. Sahni J, Nelson B, Scharenberg AM (2007) SLC41A2 encodes a plasma-membrane Mg^{2+} transporter. *Biochem J* 401:505–513
39. Claverie-Martin F (2015) Familial hypomagnesaemia with hypercalciuria and nephrocalcinosis: clinical and molecular characteristics. *Clin Kidney J* 8:656–664
40. Hawkins BT, Lundeen TF, Norwood KM, Brooks HL, Egleton RD (2007) Increased blood-brain barrier permeability and altered tight junctions in experimental diabetes in the rat: contribution of hyperglycaemia and matrix metalloproteinases. *Diabetologia* 50:202–211
41. Meij IC, Koenderink JB, van Bokhoven H et al (2000) Dominant isolated renal magnesium loss is caused by misrouting of the Na^{+} , K^{+} -ATPase gamma-subunit. *Nat Genet* 26:265–266