

# Risk factors spatial-temporal detection for dengue fever in Guangzhou

Lingcai Kong<sup>1,2</sup>, Chengdong Xu<sup>2</sup>, Pengfei Mu<sup>3,†</sup>, Jialiang Li<sup>3,†</sup>, Senyue Qiu<sup>3,†</sup> and Haixia Wu<sup>4</sup>

## Original Paper

†These authors contributed equally to this work.

**Cite this article:** Kong L, Xu C, Mu P, Li J, Qiu S, Wu H (2019). Risk factors spatial-temporal detection for dengue fever in Guangzhou. *Epidemiology and Infection* **147**, e32, 1–9. <https://doi.org/10.1017/S0950268818002820>

Received: 2 July 2018

Revised: 20 August 2018

Accepted: 17 September 2018

### Key words:

Dengue fever; determinant power; GeoDetector; risk factors

### Author for correspondence:

Dr Lingcai Kong, E-mail: [konglc@reis.ac.cn](mailto:konglc@reis.ac.cn)

<sup>1</sup>Department of Mathematics and Physics, North China Electric Power University, Baoding, China; <sup>2</sup>State Key Laboratory of Resources and Environmental Information System, Institute of Geographic Sciences and Natural Resources Research, Chinese Academy of Sciences, Beijing, China; <sup>3</sup>Electrical & Electronic Engineering School, North China Electric Power University, Baoding, China and <sup>4</sup>State Key Laboratory of Infectious Disease Prevention and Control, Collaborative Innovation Center for Diagnosis and Treatment of Infectious Diseases, National Institute for Communicable Disease Control and Prevention, Chinese Center for Disease Control and Prevention, Beijing, China

## Abstract

Dengue fever (DF) has been a growing public-health concern in China since its emergence in Guangdong Province in 1978. Of all the regions that have experienced dengue outbreaks in mainland China, the city of Guangzhou is the most affected. This study aims to investigate the potential risk factors for dengue virus (DENV) transmission in Guangzhou, China, from 2006 to 2014. The impact of risk factors on DENV transmission was qualified by the  $q$ -values calculated using a novel spatial-temporal method, the GeoDetector model. Both climatic and socioeconomic factors were considered. The impacts on DF incidence of each single factor and the interaction of two factors were analysed. The results show that the number of days with rainfall of the month before last has the highest determinant power, with a  $q$ -value of 0.898 ( $P < 0.01$ ); the  $q$ -values of the other factors related to temperature and precipitation were around 0.38–0.50. Integrating a Pearson correlation analysis, nonlinear associations were found between the DF incidence in Guangzhou and the climatic factors considered. The coupled impact of the different variables considered was enhanced compared with their individual effects. In addition, an increased number of tourists in the city were associated with a high incidence of DF. This study demonstrates that the number of rain days in a month has great influence on the DF incidence of the month after next; the temperature and precipitation have nonlinear impacts on the DF incidence in Guangzhou; both the domestic and overseas tourists coming to the city increase the risk of DENV transmission. These findings are useful in the risk assessment of DENV transmission, to predict DF outbreaks and to implement preventive DF reduction strategies.

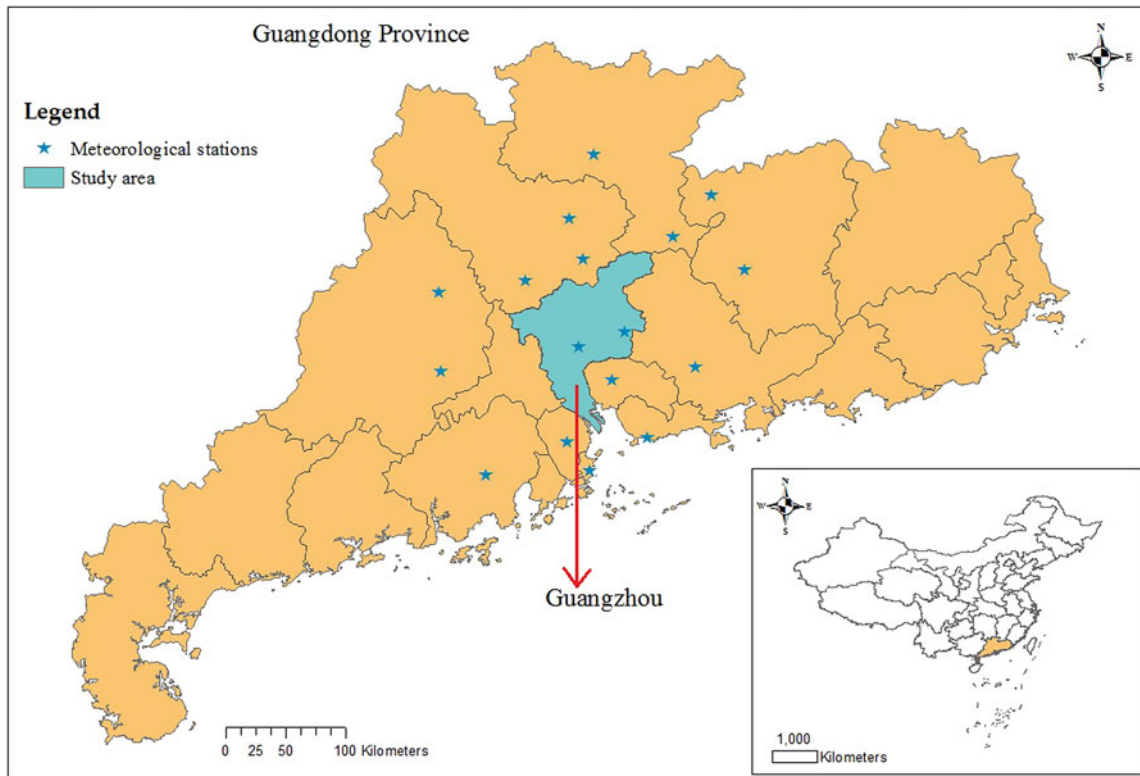
## Introduction

Dengue fever (DF) is a mosquito-borne viral infection caused by any one of four serotypes of dengue virus (DENV 1–4) [1]. It is a major public-health concern throughout tropical and sub-tropical regions. In recent decades, the incidence of DF has grown dramatically worldwide, making it the most important mosquito-borne viral disease [2, 3]. It has been estimated that 390 million dengue infections occur per year, of which 96 million manifest clinically (with any severity of disease) [3]. Brady *et al.* have estimated that more than 3.9 billion people in 128 countries are at risk of infection with dengue viruses [4]. The most seriously affected regions include Africa, the Americas, the Eastern Mediterranean, South-East Asia and the Western Pacific [3–5]. The drivers of the rapid dengue expansion include urbanisation, globalisation (travel and trade), the lack of effective mosquito control and climate change [6, 7].

The first outbreak of DF in mainland China occurred in 1978 in the city of Foshan in Guangdong Province. Since then, DF outbreaks have been recorded sequentially in Hainan, Guangdong, Guangxi, Fujian, Zhejiang and Yunnan provinces [8]; the highest number of DF cases reported in China occurred in Guangdong Province [9]. In 2014, the most severe DF outbreak in history occurred in Guangdong Province, with more than 45 000 cases of infection [8–10]. In this outbreak, 37 359 cases of infection were reported in Guangzhou, the provincial capital of Guangdong Province, seven times the historical record, confirming Guangzhou as the most affected city [11]. DF outbreaks in China were previously thought to be imported [9], but recent studies suggest that DF may be endemic to China [12, 13].

DENV are transmitted by *Aedes* mosquitoes, which are highly sensitive to climate, as temperature, precipitation and humidity, for example, can influence dengue transmission both directly and indirectly mediated by mosquito density [14, 15]. The effects of climatic

© The Author(s) 2018. This is an Open Access article, distributed under the terms of the Creative Commons Attribution licence (<http://creativecommons.org/licenses/by/4.0/>), which permits unrestricted re-use, distribution, and reproduction in any medium, provided the original work is properly cited.



**Fig. 1.** Geographic location of Guangdong Province and Guangzhou city in China, and meteorological stations used to interpolate the meteorological data in Guangzhou.

factors on DF incidence at different times and in different regions have been studied [16–20] and can vary dramatically according to region [15, 21]. Many studies have investigated the relationship between DF incidence and climatic factors in Guangzhou, most have employed regression models, such as the Poisson model [22], the negative binomial model [23], the zero-inflated regression model [24] and the distributed lag non-linear models [25]. Although there are some inconsistencies, the results of these studies have provided valuable implications for dengue risk assessment, prediction and prevention. However, the relationship between climate factors and dengue transmission is complex [15]; therefore, further research is needed.

Socioeconomic factors, such as urbanisation, also influence the incidence of DF [15, 18, 26]. One study investigated the effects of socioeconomic and environmental factors on the incidence of DF at the township level in the Pearl River Delta economic zone in 2013 [27]. Another study examined the effects of socioecological factors on the spatial distribution of DF in the unprecedented 2014 outbreak in Guangzhou [28]. Both these studies employed annual data. However, some socioeconomic factors, such as the number of tourists, may vary dramatically in a year. To our knowledge, no study on the effects of such factors on the incidence of DF has been published.

In this study, we use a novel spatial-temporal method, the GeoDetector, to identify the potential climatic and socioeconomic factors associated with the DF incidence in Guangzhou. The results may be useful in understanding the relationship between DF incidence and risk factors in Guangzhou, in providing information to predict DF outbreaks, and in developing preventive measures.

## Methods

### Study area

Guangzhou, the city most affected by dengue in mainland China, is located on the south-east coast of China ( $22^{\circ}26' - 23^{\circ}56'N$ ,  $112^{\circ}57' - 114^{\circ}3'E$ , Fig. 1) and had a population of 13.08 million in 2014 [29]. As the capital of Guangdong Province, Guangzhou serves as the political, economic, scientific, educational, tourism and cultural centre in southern China. The city has a humid subtropical climate; summers are wet with high temperatures and high humidity, and winters are mild and comparatively dry.

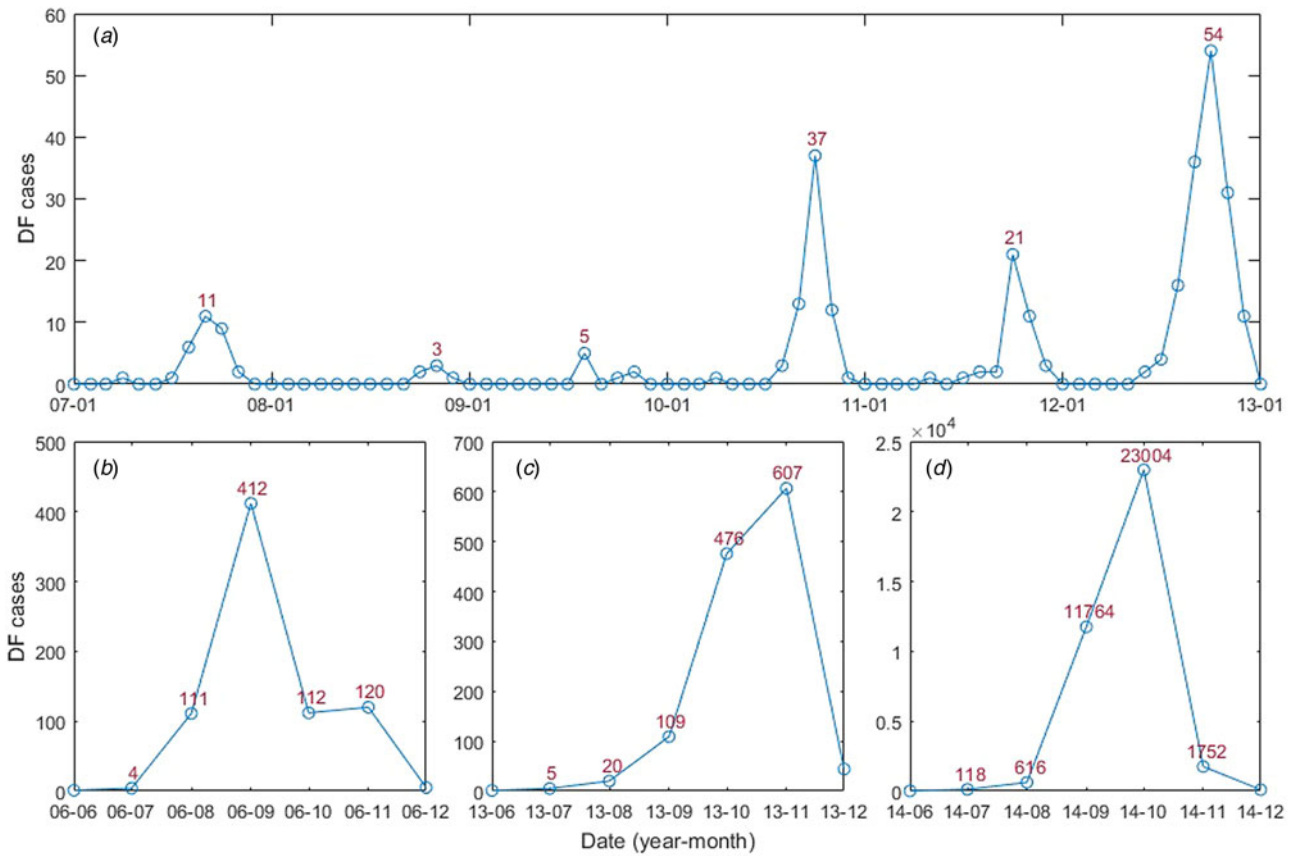
### Materials

#### Guangzhou DF cases

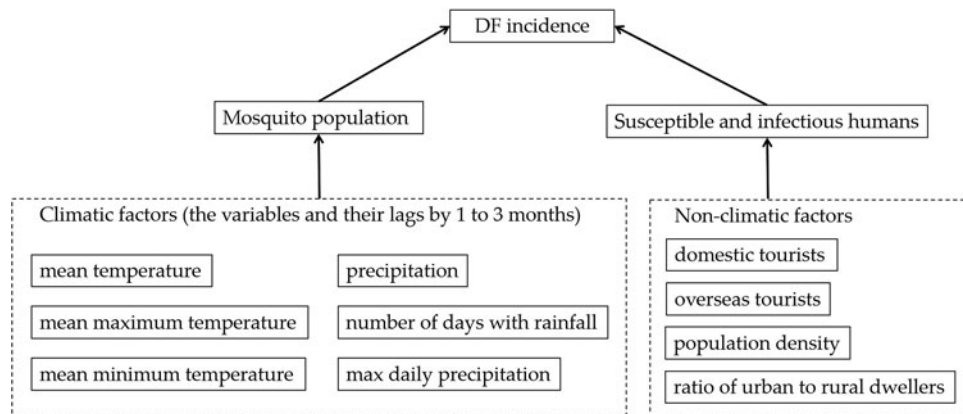
In this study, monthly DF cases from January 2006 to December 2014 (Fig. 2) were obtained from the Chinese Center for Disease Control and Prevention (CDC, <http://www.chinacdc.cn/>). DF incidence was calculated by determining the ratio between the number of DF cases and the population size of the year. All four serotypes had been detected in Guangzhou, which was dominated by DENV 1–2; DENV 3 was first detected in 2009 and DENV 4 re-emerged in Guangzhou in 2010 [13, 30].

#### Potential risk factors

Transmission of DENV requires multiple factors: virus must be present (for example, imported cases), sufficient susceptible humans to the virus and contact between humans and mosquito vectors. While the first and second factors are usually related to socio-economic factors (for example, population density,



**Fig. 2.** Guangzhou DF monthly cases from January 2006 to December 2014: (A) January 2007 to January 2013; (B) June 2006 to December 2006; (C) June 2013 to December 2013 and (D) June 2014 to December 2014.



**Fig. 3.** Potential risk factors to DF considered.

travellers go or from abroad), the third factor is influenced by environmental factors, including climatic factors, living conditions, land cover type, etc. In this study, we examined the effects of both climatic and socioeconomic risk factors (Fig. 3) on the DF incidence in Guangzhou.

In Guangzhou, *Aedes albopictus* was the only vector species that transmitted DENV [9, 31]. The Breteau index (BI), calculated as the number of containers positive for *Aedes* mosquito larvae per 100 houses [1], was used to measure the mosquito population. The monthly BI of Guangzhou is shown in Figure 4.

The climatic variables influencing the mosquito population considered include the monthly mean temperature ( $T$ ), mean maximum temperature ( $T_{max}$ ), mean minimum temperature ( $T_{min}$ ), precipitation ( $P$ ), the number of days with rainfall ( $R$ ) and maximum daily precipitation ( $P_{max}$ ), as well as their lags of 1–3 months ( $V^{-j}$ ,  $j = 1, 2, 3$ ,  $V$  denotes one of the former symbols). These data from meteorological stations located in Guangzhou and within 100 km of the borders of Guangzhou (Fig. 1) between 2006 and 2014 were obtained from the China Meteorological Data Sharing Service System (<http://data.cma.cn/>).

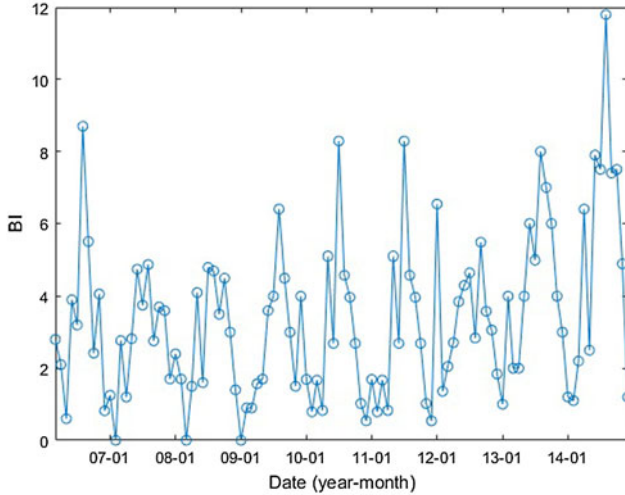


Fig. 4. Guangzhou monthly BI between January 2006 and December 2014.

We then employed the inverse distance weighted interpolation method to obtain the corresponding data for Guangzhou. The monthly mean, mean maximum and mean minimum temperatures are shown in Figure 5, the other climatic factors are shown in Figure 6.

In addition to the climatic factors, socioeconomic factors were also considered to be potentially important drivers in DENV transmission [18, 26]. In this study, we collected the data pertaining to monthly domestic ( $D$ ) and overseas tourists ( $O$ ) coming to Guangzhou from the Guangzhou Statistics Bureau (<http://www.gzstats.gov.cn/>). Figure 7 shows the variations in the number of tourists over time. Population density and the proportion of urban and rural dwellers were also considered potential risk factors to DENV transmission.

#### GeoDetector

Several studies have reported the associations between DF incidence in Guangzhou and risk factors [22–25]. However, these methods usually limited to some shortcomings, for example, the relationship between DF incidence and risk factors are usually nonlinear; the risk factors may have an interactive effect on DF incidence but cannot be fully reflected by regression models. The above limitations do not exist in the case of the GeoDetector model [32], of which, the basic idea is to measure the correspondence of the spatial temporal distribution of response variables (e.g. DF incidence) to that of suspected determinants (e.g. climatic factors). It assumes that if the suspected determinant is a disease risk, the spatial temporal distribution of the disease should be similar to that of the factor. That is to say, if a potential factor ( $X$ ) causes a disease ( $Y$ ), their temporal-spatial distributions tend to be consistent [32], as measured by the power of determinant:

$$q = 1 - \frac{1}{N\sigma^2} \sum_{h=1}^L N_h \sigma_h^2$$

where  $\sigma^2$  denotes the variance of  $Y$  in the study area;  $N$  is the size of the population  $Y$ , which is composed of  $L$  strata ( $h = 1, 2, \dots, L$ ) and  $\sigma_h^2$  stands for the variance within stratum  $h$ . The value of the  $q$ -statistic, ranging from 0 to 1, denotes the determinant power of

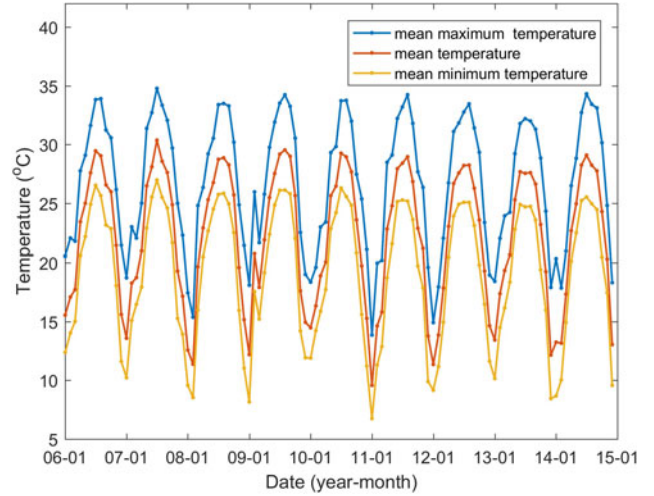


Fig. 5. Guangzhou monthly mean, mean maximum and mean minimum temperatures between January 2006 and December 2014.

a potential risk factor  $X$ . This means that the factor explains  $q \times 100\%$  of the DF incidence. The bigger it is, the more determinant power of the factor  $X$ . If  $q = 1$ ,  $Y$  is determined by  $X$  completely. On the contrary, if  $q = 0$ , the factor  $X$  is unrelated to  $Y$  completely. In addition to extracting the determinant power of a single factor, the  $q$ -statistic can also be used to probe the determinant power of the interactive effect of two risk factors,  $X_1$  and  $X_2$ . By comparing the interactive effect between two factors with the effect of their individual contributions to  $Y$ , the interactive effects are determined (shown in Table 1). Detailed information about the GeoDetector model can be found in [32–34].

The GeoDetector model can handle both quantitative and nominal data, and thus offer a novel approach for detecting interactions between the risk factors for infectious diseases, such as bacillary dysentery [35] and hand-foot-and-mouth disease [36–38]. In this study, we used three geographical detectors, i.e. factor detector, ecological detector and interaction detector to identify, respectively, the responsible factors, the relative importance factors and the interaction relationship for each two factors. The method was implemented using software downloaded from the GeoDetector website at <http://www.geodetector.org/>. All variables are temporal variables but without spatial variation. The population density and the proportion of urban and rural dwellers were stable in time within a year, while the climatic variables and tourists coming to Guangzhou varied monthly. To use the model, the risk factors measured by continuous data need to be discretised. The most commonly used discretisation methods include the equal interval method, the quantile method, the natural breaks method, the geometrical interval method, the standard deviation method, etc. [39]. Here, we used the  $q$ -statistic as the indicator for the assessment of the discretisation method and obtained the stratification information [39].

## Results

### Descriptive statistics

There were a total of 39 695 DF cases between January 2006 and December 2014. An obvious seasonal pattern in the number of DF cases can be seen. Most cases occurred in the July–November period, peaking in September and October (Fig. 2).

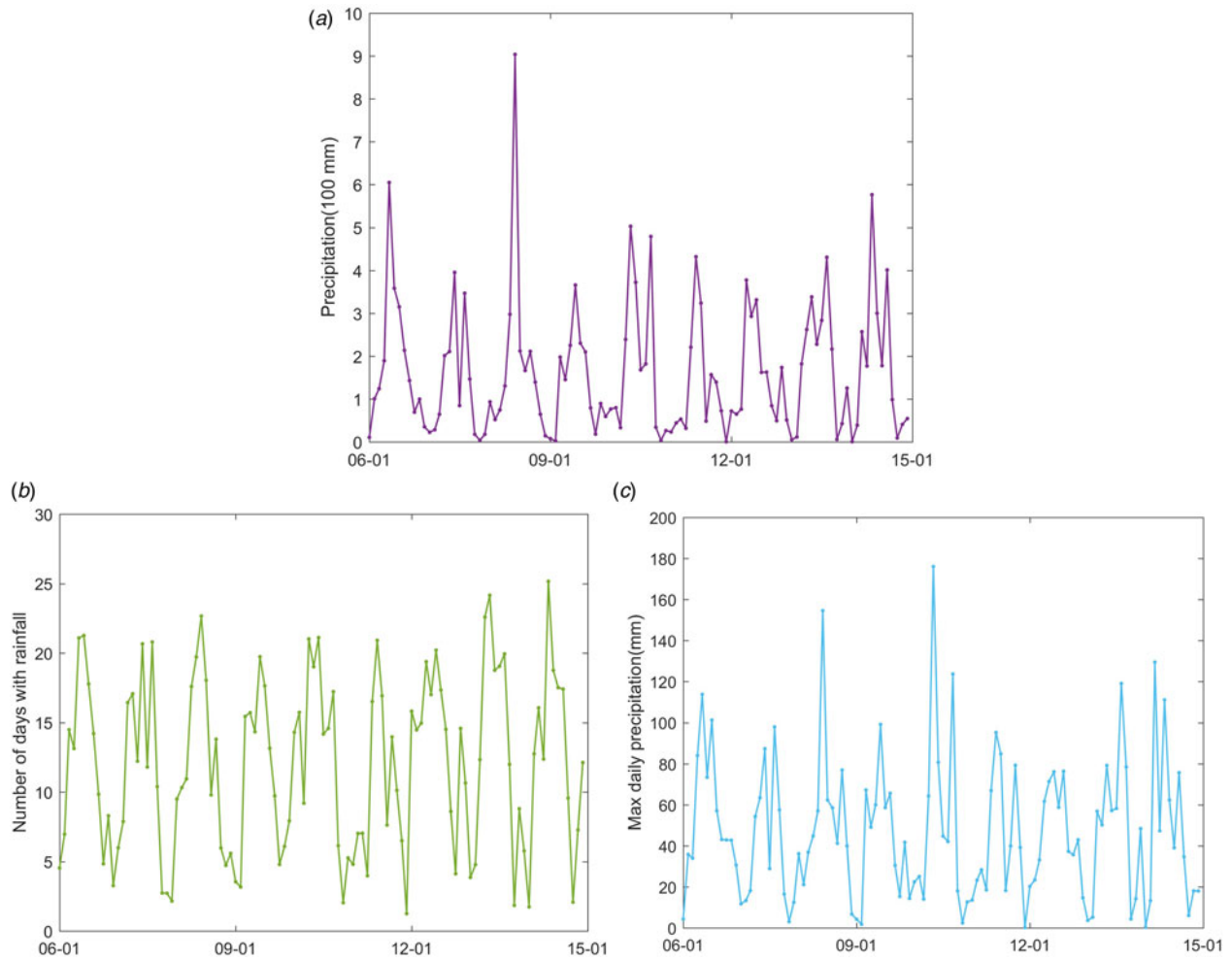


Fig. 6. Monthly precipitation (A), number of days with rainfall (B) and maximum daily precipitation (C) in Guangzhou between January 2006 and December 2014.

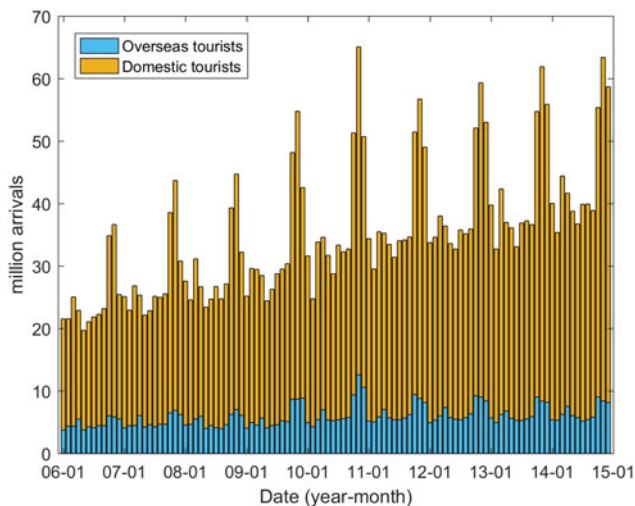


Fig. 7. Tourists coming to Guangzhou between January 2006 and December 2014.

The DF incidence also shows striking annual variations, three large outbreaks occurred in 2006, 2013 and 2014, with the highest number of cases recorded in 2014 (37 359 cases). The DF cases and the climatic and socioeconomic factors have been summarised (Table 2).

Table 1. Types of interaction between two factors

Interactive effects	Condition
Weaken	$q(X_1 \cap X_2) < q(X_1) + q(X_2)$
Weaken, univariate	$\min(q(X_1), q(X_2)) < q(X_1 \cap X_2) < \max(q(X_1), q(X_2))$
Weaken, nonlinear	$q(X_1 \cap X_2) < \min(q(X_1), q(X_2))$
Enhance, bivariate	$q(X_1 \cap X_2) > \max(q(X_1), q(X_2))$
Enhance, nonlinear	$q(X_1 \cap X_2) > q(X_1) + q(X_2)$
Independent	$q(X_1 \cap X_2) = q(X_1) + q(X_2)$

The symbol of “ $\cap$ ” means the interaction of two factors, and  $q(X_1 \cap X_2)$  represents the  $q$ -value for the interaction between two factors  $X_1$  and  $X_2$ .

### Results from the GeoDetector

We used the GeoDetector method to detect the determinant power of each risk factor and their interactive effects to the DF incidence in Guangzhou. The potential risk factors include six climatic factors (the monthly mean temperature, mean maximum temperature, mean minimum temperature, precipitation, number of days with

**Table 2.** Statistical description of incidence and potential risk factors of DF

Variables	Mean $\pm$ s.d.	Quantiles				
		5%	25%	50%	75%	95%
DF cases	367.55 $\pm$ 2478.47	0	0	1	7.5	453.6
BI	3.36 $\pm$ 2.26	0.67	1.62	2.92	4.58	7.80
Mean temperature ( $^{\circ}$ C)	22.15 $\pm$ 5.69	12.74	17.55	23.12	27.59	29.08
Mean max temperature ( $^{\circ}$ C)	26.78 $\pm$ 5.63	17.92	22.04	27.73	31.86	33.81
Mean min temperature ( $^{\circ}$ C)	19.04 $\pm$ 5.77	9.30	14.82	20.28	24.71	25.84
Precipitation (mm)	163.76 $\pm$ 155.92	5.36	47.29	127.86	225.80	431.34
Number of rainy days	12.08 $\pm$ 6.24	2.35	6.41	12.35	17.25	21.11
Max daily precipitation (mm)	47.1 $\pm$ 34.79	3.86	18.10	41.91	64.63	112.84
Ratio of urban to rural population	9.17 $\pm$ 0.44	8.68	8.80	9.08	9.51	10.07
Number of overseas tourists	59.37 $\pm$ 16.63	40.97	46.72	55.10	62.91	90.30
Number of domestic tourists	293.22 $\pm$ 91.77	177.99	222.18	280.87	332.15	478.24
Population density (person/km <sup>2</sup> )	1611.53 $\pm$ 148.2	1340.61	1500.24	1709.57	1726.96	1759.46

's.d.' denotes the standard deviation of the corresponding variable.

**Table 3.**  $q$ -values for mosquito density index and climatic factors and their lags of month

Factor	Months of lags			
	0	1	2	3
BI	0.595	–	–	–
Mean temperature	0.387	0.394	0.397	0.492
Mean max temperature	0.485	0.397	0.402	0.487
Mean min temperature	0.386	0.390	0.397	0.438
Precipitation	0.384	0.408	0.486	0.395
Number of rainy days	0.390	0.391	0.898	0.457
Max daily precipitation	0.384	0.486	0.486	0.387

Note: all the  $q$ -values are significant from zero with  $P < 0.05$ .

rainfall and maximum daily precipitation) and four socioeconomic factors (the proportion of urban and rural dwellers, population density and overseas and domestic tourists). The determinant power of each factor and their interactive effects were qualified by the  $q$ -value calculated using the GeoDetector model. The association between the DF incidence and each factor – for example, a positive or negative relationship – was assessed using Pearson correlation coefficients.

The DF incidence demonstrates an apparent seasonal variation. This variation is correlated with the mosquito density and climatic factors and/or their lags of 1–3 months with different determinant powers. The  $q$ -values of BI and the climatic factors are shown in Table 3. The results show that the determinant power of BI is almost 60%, indicating a close relationship between BI and DF incidence. Among the climatic factors, the number of days with rainfall of the month before last has the highest determinant power, with a  $q$ -value of 0.898 ( $P < 0.01$ ). However, the Pearson correlation was not significant (different from zero). We suppose that a nonlinear relationship exists between the DF incidence and the number of rainy days of the month before

**Table 4.** Pearson correlation coefficients between DF incidence and variables related to climate

Factor	Months of lags			
	0	1	2	3
Mean temperature	0.079 <sup>#</sup>	0.146 <sup>#</sup>	0.166 <sup>*</sup>	0.171 <sup>*</sup>
Mean max temperature	0.106 <sup>#</sup>	0.166 <sup>*</sup>	0.182 <sup>*</sup>	0.181 <sup>*</sup>
Mean min temperature	0.065 <sup>#</sup>	0.139 <sup>#</sup>	0.158 <sup>#</sup>	0.163 <sup>*</sup>
Precipitation	–0.111 <sup>#</sup>	0.025	0.143 <sup>#</sup>	0.074 <sup>#</sup>
Number of rainy days	–0.166 <sup>*</sup>	–0.006 <sup>#</sup>	0.119 <sup>#</sup>	0.145 <sup>#</sup>
Max daily precipitation	–0.126 <sup>#</sup>	–0.001 <sup>#</sup>	0.070 <sup>#</sup>	0.020

<sup>#</sup> $P > 0.1$ ; <sup>\*</sup> $0.05 < P < 0.1$ .

last. Regarding precipitation, the determinant power with the 2-month lag is the highest among the other lags, with a  $q$ -value of 0.486 ( $P < 0.01$ ). The maximum daily precipitation in the last 2 months had the same  $q$ -values, 0.486. However, the Pearson correlation coefficients between DF incidence and them were not significant, meaning nonlinear relationships may exist between them. The interpretation for the nonlinear relationships can be found in the next section.

The determinant power of the mean temperature, mean maximum temperature, mean minimum temperature and their lags of 1–3 months are similar, with  $q$ -values within the range of 0.38–0.50 ( $P < 0.01$ ). The Pearson correlations between these variables and the DF incidence were not significant ( $P > 0.05$ ). This may be because the impact of these climatic variables and these lags on the DF incidence were nonlinear. The Pearson correlation coefficients between DF incidence and each risk variable considered are shown in Table 4.

The determinant powers of socioeconomic factors were also calculated using the GeoDetector method. Both domestic and overseas tourists coming to Guangzhou have significant effects

**Table 5.** The  $q$ -values for the interactive effect of different factors

Factors	BI	$T^{-3}$	$T_{\max}^{-3}$	$T_{\min}^{-3}$	$P^{-2}$	$R^{-2}$	$P_{\max}^{-2}$	$D$	$O$
BI									
$T^{-3}$	0.595 <sup>EB</sup>								
$T_{\max}^{-3}$	0.994 <sup>EB</sup>	0.487 <sup>EB</sup>							
$T_{\min}^{-3}$	0.898 <sup>EB</sup>	0.439 <sup>EB</sup>	0.994 <sup>EN</sup>						
$P^{-2}$	0.994 <sup>EB</sup>	0.591 <sup>EN</sup>	0.994 <sup>EN</sup>	0.994 <sup>EN</sup>					
$R^{-2}$	0.899 <sup>EB</sup>	0.994 <sup>EB</sup>	0.994 <sup>EB</sup>	0.899 <sup>EB</sup>	0.994 <sup>EB</sup>				
$P_{\max}^{-2}$	0.994 <sup>EB</sup>	0.487 <sup>EB</sup>	0.994 <sup>EN</sup>	0.994 <sup>EN</sup>	0.994 <sup>EN</sup>	0.994 <sup>EN</sup>			
$D$	0.995 <sup>EB</sup>	0.489 <sup>EB</sup>	0.995 <sup>EN</sup>	0.995 <sup>EN</sup>	0.996 <sup>EN</sup>	0.996 <sup>EB</sup>	0.996 <sup>EN</sup>		
$O$	0.994 <sup>EB</sup>	0.593 <sup>EN</sup>	0.994 <sup>EN</sup>	0.994 <sup>EN</sup>	0.994 <sup>EN</sup>	0.994 <sup>EB</sup>	0.994 <sup>EN</sup>	0.996 <sup>EN</sup>	

EB, enhance (bivariate); EN, enhance (nonlinear).

on DF incidence, with  $q$  values of 0.489 and 0.487, respectively (both  $P < 0.01$ ). More tourists were associated with higher DF incidence. The Pearson correlation coefficients between domestic and overseas tourists and the DF incidence are 0.207 ( $P < 0.05$ ) and 0.174 ( $0.05 < P < 0.1$ ), respectively. For the population density and the proportion of urban and rural dwellers, neither has significant explanatory power, with  $q$ -values of 0.0723 ( $P = 0.1234$ ) and 0.0671 ( $P = 0.1503$ ).

From the former results, we found that, for each risk factor related to temperature, the factor with 3-months lag has the largest  $q$ -value; for the factors related to precipitation, is the one with 2-months lag. We analysed their interactive effects with BI, the domestic and overseas tourists. The results show that the coupled impact of every two factors considered was enhanced compared with the effect of their individual influences (Table 5). As we know, both higher temperature and more precipitation would provide more suitable conditions for mosquitoes, the results show that their interactive effect is enhanced. DF in Guangzhou was inspired by imported cases [30], travellers go to or from countries where DF is endemic have chance to import DENV. Coupled with greater mosquito population, or suitable environmental and climatic factors, more travellers would increase the risk of DF outbreak, caused enhanced interactive effects.

## Discussion

DF has been a growing public-health concern in mainland China since its emergence in Guangdong Province in 1978 [40]. The city of Guangzhou, the provincial capital of Guangdong Province and one of the largest modern cities in China, has had the highest DF incidence in mainland China [11]. In this study, the determinant powers of potential climatic and socioeconomic factors were examined. The results indicate that the number of rainy days of the month before last had the greatest determinant power; the BI, the temperature and its lags of 1–3 months, precipitation, the maximum daily precipitation and the domestic and overseas tourists had significant impact on DF incidence in Guangzhou. The interactive effects of the mean minimum temperature and the other climatic variables were enhanced compared with the effect of their individual effects.

There is an obvious seasonal pattern in the Guangzhou DF incidence. This seasonal variation is associated with climatic factors through direct and indirect effects [14, 15]. There is an

opposite effect of precipitation on mosquito populations. While precipitation provides habitats for the aquatic stages of the mosquito life cycle, and higher precipitation is associated with increased mosquito populations; intense rainfall may wash out breeding sites and therefore have a negative effect on mosquito populations [15]. This study shows that the number of days with rainfall of the month before last has great impact on the DF incidence, with a  $q$ -value of 0.898. This is consistent with the findings in [14], which show the number of days with rainfall to be a better predictor. The determinant powers of the other variables related to rainfall, the precipitation, the maximum daily precipitation and their lags of 1–3 months, were around 0.38 to 0.50. A non-significant positive association between DF outbreak risk and precipitation was detected in [14]. In this study, integrating the determinant powers calculated using the GeoDetector model with the Pearson correlation analysis, we found that nonlinear relationships exist between the DF incidence and the variables related to rainfall.

While precipitation plays an essential role in providing habitats for the aquatic stages of the mosquito, temperature has a direct effect on DENV replication within vectors and indirect effects on DENV transmission by influencing the mosquito development and survival [15]. This study also shows that temperature and its lags of 1–3 months are important factors that influence the DF incidence in Guangzhou. Higher temperature is associated with higher DF incidence, which is a positive association. Like precipitation, the relationships between DF incidence and the three variables related to temperature, as well as their lags of 1–3 months, may be nonlinear. It is known that mosquito population dynamics, the oviposition rates and transition and mortality in different stages of the life cycle are considerably influenced by temperature [15, 41–43]. In short, an ideal range for survival and development through all phases of the mosquito life cycle occurs, for example, at 20–30 °C, as stated in [44]. The development of mosquitoes is often slower in both cooler and higher temperatures [41, 42], although the critical limiting values may be different [15]. Temperature is also a key component in the ecology of DENV in that increasing temperature can accelerate viral replication within the vector and shorten the extrinsic incubation period (EIP) [45, 46]. Because of the variation in temperature throughout the day in nature, the effect of diurnal temperature ranges (DTRs) on the susceptibility of *Ae. aegypti* to DENV to DENV has also been explored in [47]. The authors found that compared with moderate DTRs or constant temperature, larger DTRs decreased

the probability of infection of *Ae. aegypti*, but the EIP was unchanged [47]. Synthesising the above results, the overall effect of temperature on DENV ecology is complex; increasing temperature may accelerate parts of the viral transmission cycle, while other variables may become limited by higher temperatures [15]. Therefore, the nonlinear relationship between DF incidence and temperature is readily comprehensible.

DF incidence is also influenced by socioeconomic factors, such as population density, road density and land cover [27, 28, 48]. In this study, we examined the determinant power of domestic and overseas tourists coming to Guangzhou, the population density and the proportion of urban and rural dwellers. The results show that both domestic and overseas tourists coming to Guangzhou have a high determinant power of 0.489 and 0.487, respectively. There was a significant positive correlation between the tourists and DF incidence. The situation is similar to that in Australia, where there is an increasing trend in DF incidence as the number of overseas visitors increases [49]. Residents in Guangdong Province keep close connections with South East Asian countries that are in the DF-endemic regions [50]. Therefore, more travellers from these countries increase the risk of DENV transmission. We also explored the influence of population density and the proportion of urban and rural dwellers. The results show that these factors had non-significant determinant power in relation to DF incidence. This is inconsistent with the findings in [27], which analysed the relationships on a finer spatial scale. This inconsistency may be because the data we used were aggregated over large spatial scales.

The findings in this study have implication for the risk assessment, early warning of DF in Guangzhou, and to implement preventive strategies. Special attention should be paid to the rainy days, which has the largest determinant power on DF incidence. Besides mosquito density and climatic factors, which have been emphasised in the literatures [22–25], travellers to the city, especially to or from countries where DF is endemic, should also be noted.

Our study aims to detect the impact of climatic and socioeconomic factors on DF incidence in Guangzhou. However, there were some limitations. First, imported DF cases were not excluded due to a lack of information. Nevertheless, this problem has little influence on the results because the imported cases only accounted for <1% of all DF cases in Guangzhou in 2006–2014 [22, 25]. Second, we used aggregated data for the whole city, while the associations between DF and risk factors are site-specific [15, 21]. This may result in some detailed information been submerged; therefore, finer-scale research is needed in the future. Third, unreported and inapparent cases are an inherent limitation in the DF surveillance data. However, our results still have significance in the risk assessment of DENV transmission, in the prediction of DF outbreaks, and in implementing preventive DF reduction strategies.

**Acknowledgements.** This study was supported by the Fundamental Research Funds for the Central Universities (no. 9161017003 and 9161018003) and the State Key Laboratory of Resources and Environmental Information System, the Undergraduate Innovative Test Program (no. 201710079087).

**Conflict of interest.** The authors declare no conflict of interest.

## References

1. WHO (2009) *Dengue: Guidelines for Diagnosis, Treatment, Prevention and Control – New Edition*. Geneva, Switzerland: World Health Organization.
2. Shepard DS et al. (2016) The global economic burden of dengue: a systematic analysis. *Lancet Infectious Diseases* **16**, 935–941.
3. Bhatt S et al. (2013) The global distribution and burden of dengue. *Nature* **496**, 504–507.
4. Brady OJ et al. (2012) Refining the global spatial limits of dengue virus transmission by evidence-based consensus. *PLoS Neglected Tropical Diseases* **6**, e1760.
5. WHO (2012) *Global Strategy for Dengue Prevention and Control, 2012–2020*. Geneva, Switzerland: World Health Organization.
6. Murray NE, Quam MB and Wilder-Smith A (2013) Epidemiology of dengue: past, present and future prospects. *Clinical Epidemiology* **5**, 299–309.
7. Gubler DJ (2011) Dengue, urbanization and globalization: the unholy trinity of the 21(st) century. *Tropical Medicine and Health* **39**(4 Suppl), 3–11.
8. Wu JY et al. (2010) Dengue fever in mainland China. *American Journal of Tropical Medicine and Hygiene* **83**, 664–671.
9. Lai S et al. (2015) The changing epidemiology of dengue in China, 1990–2014: a descriptive analysis of 25 years of nationwide surveillance data. *BMC Medicine* **13**, 100.
10. Sun J et al. (2016) The epidemiological characteristics and genetic diversity of dengue virus during the third largest historical outbreak of dengue in Guangdong, China, in 2014. *Journal of Infection* **72**, 80–90.
11. Yang L et al. (2015) A survey of the 2014 dengue fever epidemic in Guangzhou, China. *Emerging Microbes & Infections* **4**, e57.
12. Lin YP et al. (2016) Clinical and epidemiological features of the 2014 large-scale dengue outbreak in Guangzhou city, China. *BMC Infectious Diseases* **16**, 102.
13. Luo L et al. (2017) The dengue preface to endemic in mainland China: the historical largest outbreak by *Aedes albopictus* in Guangzhou, 2014. *Infectious Diseases of Poverty* **6**, 148.
14. Xu L et al. (2017) Climate variation drives dengue dynamics. *Proceedings of the National Academy of Sciences of the United States of America* **114**, 113–118.
15. Morin CW, Comrie AC and Ernst K (2013) Climate and dengue transmission: evidence and implications. *Environmental Health Perspectives* **121**, 1264–1272.
16. Earnest A, Tan SB and Wilder-Smith A (2012) Meteorological factors and El Niño Southern Oscillation are independently associated with dengue infections. *Epidemiology and Infection* **140**, 1244–1251.
17. Goto K et al. (2013) Analysis of effects of meteorological factors on dengue incidence in Sri Lanka using time series data. *PLoS ONE* **8**, e63717.
18. Lowe R et al. (2013) The development of an early warning system for climate-sensitive disease risk with a focus on dengue epidemics in Southeast Brazil. *Statistics in Medicine* **32**, 864–883.
19. Bangs MJ et al. (2006) Climatic factors associated with epidemic dengue in Palembang, Indonesia: implications of short-term meteorological events on virus transmission. *Southeast Asian Journal of Tropical Medicine and Public Health* **37**, 1103–1116.
20. Chien LC and Yu HL (2014) Impact of meteorological factors on the spatiotemporal patterns of dengue fever incidence. *Environment International* **73**, 46–56.
21. Vu HH et al. (2014) Regional differences in the growing incidence of dengue fever in Vietnam explained by weather variability. *Tropical Medicine and Health* **42**, 25–33.
22. Sang S et al. (2015) Predicting unprecedented dengue outbreak using imported cases and climatic factors in Guangzhou, 2014. *PLoS Neglected Tropical Diseases* **9**, e0003808.
23. Shen JC et al. (2015) The impacts of mosquito density and meteorological factors on dengue fever epidemics in Guangzhou, China, 2006–2014: a time-series analysis. *Biomedical and Environmental Sciences* **28**, 321–329.
24. Wang CG et al. (2014) A study of the dengue epidemic and meteorological factors in Guangzhou, China, by using a zero-inflated Poisson regression model. *Asia-Pacific Journal of Public Health* **26**, 48–57.
25. Xiang J et al. (2017) Association between dengue fever incidence and meteorological factors in Guangzhou, China, 2005–2014. *Environmental Research* **153**(Supplement C), 17–26.
26. Lowe R et al. (2011) Spatio-temporal modelling of climate-sensitive disease risk: towards an early warning system for dengue in Brazil. *Computers & Geosciences* **37**, 371–381.



27. **Qi X *et al.*** (2015) The effects of socioeconomic and environmental factors on the incidence of dengue fever in the pearl river Delta, China, 2013. *PLoS Neglected Tropical Diseases* **9**, e0004159.
28. **Cao Z *et al.*** (2017) Individual and interactive effects of socio-ecological factors on dengue fever at fine spatial scale: a geographical detector-based analysis. *International Journal of Environmental Research and Public Health* **14**, 795.
29. **Guangzhou Statistic Bureau** (2015) Statistical information manual of Guangzhou in 2015.
30. **Sang S *et al.*** (2015) Dengue is still an imported disease in China: a case study in Guangzhou. *Infection Genetics and Evolution* **32**, 178–190.
31. **Li M-T *et al.*** (2016) The driving force for 2014 dengue outbreak in Guangdong, China. *PLoS ONE* **11**, e0166211.
32. **Wang JF *et al.*** (2010) Geographical detectors-based health risk assessment and its application in the neural tube defects study of the Heshun region, China. *International Journal of Geographical Information Science* **24**, 107–127.
33. **Wang J, Zhang T and Fu B** (2016) A measure of spatial stratified heterogeneity. *Ecological Indicators* **67**, 250–256.
34. **Wang J and Xu C** (2017) Geodetector: principle and prospective (in Chinese). *Acta Geographica Sinica* **72**, 116–134.
35. **Xu C *et al.*** (2017) Spatial-temporal detection of risk factors for bacillary dysentery in Beijing, Tianjin and Hebei, China. *BMC Public Health* **17**, 743.
36. **Xu CD** (2017) Spatio-temporal pattern and risk factor analysis of hand, foot and mouth disease associated with under-five morbidity in the Beijing-Tianjin-Hebei region of China. *International Journal of Environmental Research and Public Health* **14**, 416.
37. **Wang J *et al.*** (2013) Spatial dynamic patterns of hand-foot-mouth disease in the People's Republic of China. *Geospatial Health* **7**, 381–390.
38. **Wang J *et al.*** (2011) Hand, foot and mouth disease: spatiotemporal transmission and climate. *International Journal of Health Geographics* **10**, 25.
39. **Cao F, Ge Y and Wang JF** (2013) Optimal discretization for geographical detectors-based risk assessment. *GIScience & Remote Sensing* **50**, 78–92.
40. **Jin X, Lee M and Shu J** (2015) Dengue fever in China: an emerging problem demands attention. *Emerging Microbes & Infections* **4**, e3.
41. **Yang HM *et al.*** (2009) Assessing the effects of temperature on the population of *Aedes aegypti*, the vector of dengue. *Epidemiology and Infection* **137**, 1188–1202.
42. **Rossi M, Ólivér L and Massad E** (2014) Modelling the implications of temperature on the life cycle of *Aedes aegypti* mosquitoes. In Ferreira CP, Godoy WAC (eds), *Ecological Modelling Applied to Entomology*. Cham: Springer International Publishing, pp. 81–107 (Entomology in Focus).
43. **Delatte H *et al.*** (2009) Influence of temperature on immature development, survival, longevity, fecundity, and gonotrophic cycles of *Aedes albopictus*, vector of chikungunya and dengue in the Indian Ocean. *Journal of Medical Entomology* **46**, 33–41.
44. **Tun-Lin W, Burkot TR and Kay BH** (2000) Effects of temperature and larval diet on development rates and survival of the dengue vector *Aedes aegypti* in north Queensland, Australia. *Medical and Veterinary Entomology* **14**, 31–37.
45. **Chan M and Johansson MA** (2012) The incubation periods of dengue viruses. *PLoS ONE* **7**, e50972.
46. **Tjaden NB *et al.*** (2013) Extrinsic incubation period of dengue: knowledge, backlog, and applications of temperature dependence. *PLoS Neglected Tropical Diseases* **7**, e2207.
47. **Lambrechts L *et al.*** (2011) Impact of daily temperature fluctuations on dengue virus transmission by *Aedes aegypti*. *Proceedings of the National Academy of Sciences of the United States of America* **108**, 7460–7465.
48. **Ren H *et al.*** (2017) Exploring determinants of spatial variations in the dengue fever epidemic using geographically weighted regression model: a case study in the joint Guangzhou-Foshan area, China, 2014. *International Journal of Environmental Research and Public Health* **14**, 1518.
49. **Akter R *et al.*** (2017) Socio-demographic, ecological factors and dengue infection trends in Australia. *PLoS ONE* **12**, e0185551.
50. **Fan J *et al.*** (2013) Identifying the high-risk areas and associated meteorological factors of dengue transmission in Guangdong Province, China from 2005 to 2011. *Epidemiology and Infection* **142**, 634–643.