

Tweety-homolog (*Ttyh*) Family Encodes the Pore-forming Subunits of the Swelling-dependent Volume-regulated Anion Channel (VRAC_{swell}) in the Brain

Young-Eun Han^{1,2,3}, Jea Kwon^{1,3,4}, Joung-ha Won^{1,3,5}, Heeyoung An^{1,3,4},
Minwoo Wendy Jang^{1,3,4}, Junsung Woo³, Je Sun Lee⁶, Min Gu Park^{1,3,4},
Bo-Eun Yoon⁷, Seung Eun Lee⁸, Eun Mi Hwang³, Jae-Young Jung^{2,3},
Hyungju Park⁶, Soo-Jin Oh^{3,9} and C. Justin Lee^{1,2,3*}

¹Center for Cognition and Sociality, Institute for Basic Science, Daejeon 34126, ²Department of Neuroscience, Division of Bio-Medical Science & Technology, KIST School, Korea University of Science and Technology, Seoul 02792, ³Center for Glia-Neuron Interaction, Korea Institute of Science and Technology (KIST), Seoul 02792, ⁴KU-KIST, Graduate School of Converging Science and Technology, Korea University, Seoul, 02841, ⁵Department of Biological Sciences, Korea Advanced Institute of Science and Technology (KAIST), Daejeon 34141, ⁶Molecular Neurobiology Laboratory, Dept. of Structure and Function of Neural Network, Korea Brain Research Institute, Daegu 41068, ⁷Department of molecular biology, Dankook University, Cheonan 31116, ⁸Virus Facility, Research Animal Resource Center, Korea Institute of Science and Technology (KIST), Seoul 02792, ⁹Convergence Research Center for Diagnosis, Treatment and Care System of Dementia, Korea Institute of Science and Technology (KIST), Seoul 02792, Korea

In the brain, a reduction in extracellular osmolality causes water-influx and swelling, which subsequently triggers Cl⁻ and osmolytes-efflux via volume-regulated anion channel (VRAC). Although LRRC8 family has been recently proposed as the pore-forming VRAC which is activated by low cytoplasmic ionic strength but not by swelling, the molecular identity of the pore-forming swelling-dependent VRAC (VRAC_{swell}) remains unclear. Here we identify and characterize Tweety-homologs (TTYH1, TTYH2, TTYH3) as the major VRAC_{swell} in astrocytes. Gene-silencing of all *Ttyh1/2/3* eliminated hypo-osmotic-solution-induced Cl⁻ conductance (I_{Cl,swell}) in cultured and hippocampal astrocytes. When heterologously expressed in HEK293T or CHO-K1 cells, each TTYH isoform showed a significant I_{Cl,swell} with similar aquaporin-4 dependency, pharmacological properties and glutamate permeability as I_{Cl,swell} observed in native astrocytes. Mutagenesis-based structure-activity analysis revealed that positively charged arginine residue at 165 in TTYH1 and 164 in TTYH2 is critical for the formation of the channel-pore. Our results demonstrate that TTYH family confers the *bona fide* VRAC_{swell} in the brain.

Key words: Volume-regulated anion channel, VRAC, Tweety-homolog, Ttyh, Volume regulation

Received April 16, 2019, Revised April 23, 2019, Accepted April 25, 2019

*To whom correspondence should be addressed.

TEL: 82-42-878-9150, FAX: 82-42-878-9151, e-mail: cjl@ibs.re.kr

INTRODUCTION

Brain volume regulation is a homeostatic process in which the ionic and osmotic balance is maintained by water movement. It is critical for proper function and health of the nervous system and is tightly controlled by a specific cell type called astrocytes due to their high and exclusive expression of the water channel, aquaporin-4 (AQP4) [1, 2]. The increase of intracellular or decrease of extracellular ionic- and organic-osmolytes initiates water-influx through AQP4 and swelling, which triggers an efflux of Cl^- and osmolytes via volume-regulated anion channel ($\text{VRAC}_{\text{swell}}$), followed by a water-efflux to restore volume. The latter process is called regulatory volume decrease (RVD) [3-5]. The astrocytic $\text{VRAC}_{\text{swell}}$ has been initially characterized as an intracellular Ca^{2+} -independent and kinase inhibitor-sensitive channel [6]. It has been subsequently shown that several organic osmolytes, notably glutamate and taurine which act as neurotransmitters, are released via the astrocytic $\text{VRAC}_{\text{swell}}$ [7-10]. Taurine, the most abundant osmolyte has been shown to regulate the glycinergic neurotransmission in the hypothalamus [11]. Moreover, $\text{VRAC}_{\text{swell}}$ and the released osmolytes have been implicated in several pathophysiological conditions such as cerebral edema following excessive oxidative stress, ischemia, traumatic brain injury and glioma [12-16]. $\text{VRAC}_{\text{swell}}$ is also associated with many other general functions including regulation of cell cycle, apoptosis, proliferation and cellular mobility [17, 18]. Reduction of $\text{VRAC}_{\text{swell}}$ and impairment of apoptotic volume decrease have been linked to a multi-drug resistance (MDR) to chemotherapy in several cancer cells [19, 20]. Although the pathophysiological functions of the astrocytic $\text{VRAC}_{\text{swell}}$ and the released osmolytes are becoming increasingly highlighted, the precise molecular and cellular mechanisms of $\text{VRAC}_{\text{swell}}$ activation and related functions are still poorly understood due to the lack of molecular identity of the astrocytic $\text{VRAC}_{\text{swell}}$.

Over the years, many Cl^- channels and transmembrane proteins have been proposed as the molecular identity of $\text{VRAC}_{\text{swell}}$ but tested with no success [17, 21-24]. Since 2014, LRRC8A has been proposed as a necessary component of $\text{VRAC}_{\text{swell}}$ in various cell lines by providing evidence of the reduction of $I_{\text{Cl,swell}}$ with *Lrrc8a* siRNA [25, 26]. Unexpectedly, reconstitution of the LRRC8A-containing complex into lipid bilayers was sufficient to form anion channels activated by low intracellular ionic strength (Γ) rather than cell swelling itself [27]. Moreover, an overexpression of LRRC8 isoforms not only failed to induce larger $I_{\text{Cl,swell}}$ over the endogenous levels in various cell line such as HEK293T, HeLa cells [25, 26], but also failed to restore $\text{VRAC}_{\text{swell}}$ activity in cisplatin-resistant KCP-4 cells [28]. These results indicate that LRRC8A is not sufficient for $\text{VRAC}_{\text{swell}}$ in HEK293T, HeLa and KCP-4 cells.

In a very recent study, the crystal structure of the LRRC8 family consisting of a transmembrane pore domain activated at low cytoplasmic Γ has been determined [29], indicating that LRRC8 family is the VRAC activated by the lower cytosolic Γ (VRAC_{Γ}), rather than $\text{VRAC}_{\text{swell}}$. Therefore, these previous findings strongly suggest that there exists a separate molecular component for $\text{VRAC}_{\text{swell}}$ in astrocyte.

Consistently, it has been clear that LRRC8-mediated VRAC_{Γ} and the astrocytic $\text{VRAC}_{\text{swell}}$ do not share the same biophysical and biochemical properties. LRRC8-mediated VRAC_{Γ} in HEK293T and HeLa cells were reported to be Ca^{2+} -dependent as evidenced by the sensitivity to both extracellular zero Ca^{2+} and intracellular BAPTA [30, 31]. Moreover, a G protein-coupled receptor (GPCR)-mediated activation of astrocytic VRAC was also shown to be dependent on the local Ca^{2+} in nanodomains [32]. In contrast, the swelling-activated VRAC , which was firstly reported in human epithelial cells (intestine 407), was demonstrated to be totally independent of Ca^{2+} [5]. More importantly, astrocytic $\text{VRAC}_{\text{swell}}$ was shown to be Ca^{2+} -independent [6]. These results suggested that there exist two-types of VRAC s in astrocytes: Ca^{2+} -dependent and Ca^{2+} -independent components of VRAC . In addition, there has been no evidence that LRRC8-mediated VRAC_{Γ} is sensitive to kinase inhibitors, which happens to be a unique property of the astrocytic $\text{VRAC}_{\text{swell}}$ [6]. Furthermore, the glutamate permeability ratio, $P_{\text{glu}}/P_{\text{Cl}}$, of LRRC8-mediated VRAC_{Γ} was previously reported as near 0.2 [33]. In contrast, the astrocytic $\text{VRAC}_{\text{swell}}$ has been directly shown to display a higher glutamate permeability [8]. Interestingly, the glutamate- and GABA-permeable Ca^{2+} -activated anion channel BEST1 [34, 35], but not LRRC8A, was shown to encode Aqp4-dependent $\text{VRAC}_{\text{swell}}$ in retinal pigment epithelial cells differentiated from human-induced pluripotent stem cells (hiPSC-RPE) [31, 36], suggesting that anion channels other than LRRC8A could be responsible for the astrocytic $\text{VRAC}_{\text{swell}}$. More importantly, mechanically-induced ATP release in astrocyte was shown to be mediated possibly by $\text{VRAC}_{\text{swell}}$ as evidenced by the sensitivity to a known VRAC inhibitor, DCPIB [37]. However, this was not impaired by gene-silencing of LRRC8A, suggesting an involvement of other unidentified component of $\text{VRAC}_{\text{swell}}$ [37]. Therefore, the molecular identity of the astrocytic $\text{VRAC}_{\text{swell}}$ still remains unknown.

Previous studies reported that the maxi-chloride channels share the common physiological, biophysical and pharmacological profiles with $\text{VRAC}_{\text{swell}}$ [38]. Human TTYH1, but not TTYH2 and 3, was initially described as putative maxi-chloride anion channels, activated by hypo-osmotic solution (HOS) [39], which was disproven later [40]. Recently, TTYH1 was confirmed to be a potent regulator of tumor microtubule morphology, invasion, and prolifer-

eration of glioma, which are the known functions of VRAC_{swell} [41]. Brain transcriptome analysis by RNA sequencing showed that in astrocytes TTYH1 and 3 were the top 49th and 94th among 22,458 genes ranked by expression level [42]. Furthermore, TTYH1/2/3 showed 11-, 12-, and 3-fold higher mRNA level in astrocyte compared to neuron in the brain [42]. Therefore, TTYH1/2/3 should be considered as potential candidates of the astrocytic VRAC_{swell}.

In this study, we set out to determine the true molecular identity of the astrocytic VRAC_{swell} activated by AQP4-dependent swelling. Many previous studies of VRAC_r and VRAC_{swell} have used external and internal solutions that contained cations such as Na⁺, K⁺, and Cs⁺, which might have allowed the investigators to inadvertently record currents contaminated by cations. We have utilized a special recipe of external and internal solutions consisting only Cl⁻ as the permeating ion to eliminate any contribution of cations Na⁺, K⁺ and to minimize Cs⁺ for the recording of genuine I_{Cl,swell}, as previously described for the recording of VRAC_{swell} current in cultured astrocyte [6]. We have identified and characterized TTYH1/2/3, not LRRC8A nor BEST1, as the pore-forming subunits of the astrocytic VRAC_{swell}.

MATERIALS AND METHODS

Animals and housing

C57BL/6J mice and hGFAP-CreERT2 were used at 8~10 weeks of age. The hGFAP-CreERT2 mice are inducible transgenic mice under control of human *GFAP* promoter and estrogen. All mice were kept on a 12 hours light-dark cycle in a specific-pathogen-free facility with controlled temperature and humidity and had free access to food and water. All experimental procedures were conducted according to protocols approved by the directives of the Institutional Animal Care and Use Committee of KIST (Seoul, Republic of Korea).

Primary mouse astrocyte culture

Primary cultured astrocytes were prepared from cortex of C57BL/6 mouse pups (P0-P2) as described [37]. The cerebral cortex was dissected from the brain and adherent meninges were removed, minced and dissociated into single cell suspension by trituration. Cells were cultured in Dulbecco's modified Eagle's medium (DMEM, #10-013, Corning) supplemented with (in mM) 25 glucose, 4 L-glutamine, 1 sodium pyruvate, 10% heat-inactivated horse serum (#260500-088, Gibco), 10% heat-inactivated fetal bovine serum (#10082-147, Gibco) and 10,000 units/ml penicillin-streptomycin (#15140-122, Gibco). Cultures were maintained at 37°C in a humidified 5% CO₂ incubator. On DIV3, cells were vigorously washed with repeated pipetting and the media was

replaced to get rid of debris and other floating cell types. During maintaining the culture before use, the media was replaced every 3~4 days. For gene-silencing experiments with primary cultured astrocytes, various shRNA vectors were electroporated (Neon Transfection system kit; #MPK10096, Invitrogen) into trypsinized cultured astrocytes 4 days before the experimental day and replated onto culture dish. One day before the experimental day (for recording I_{Cl,swell}, DIV21 primary astrocyte culture were used), cells were replated onto cover-glass coated with 0.1 mg/ml Poly D-Lysine (PDL, #P6407, Sigma-Aldrich).

Cell lines culture

Human embryonic kidney 293T (HEK293T) and Chinese hamster ovary-K1 (CHO-K1, referred as CHO) cells were purchased from ATCC (#CRL-3216, ATCC) and the Korean Cell Line Bank (Seoul National University, Republic of Korea), respectively. All cell lines have been tested for mycoplasma contamination. HEK293T cells and CHO cells were cultured in DMEM (#10-013, Corning) and F-12 (#21127-022, Gibco), respectively. Both media were supplemented with (in mM) 25 glucose, 4 L-glutamine, 1 sodium pyruvate, 10% heat-inactivated fetal bovine serum (#10082-147, Gibco) and 10,000 units/ml penicillin-streptomycin (#15140-122, Gibco). Cell lines were maintained at 37°C in a humidified atmosphere of 95% air and 5% CO₂. 18 hours before the experimental day, cells were transfected with DNA clone by transfection reagent (Effectene, #301425, Qiagen). On experiment day, the transfected cells were replated onto cover-glass for electrophysiological recordings. For immunocytochemistry, HEK293T cells were plated onto PDL coated cover-glass, and transfected with DNA clone 20 hours before fixation.

shRNA vector construction

Various kinds of shRNA were synthesized as for following: Two kinds of oligos were purchased (Sequence of oligos; [phos]5'-t [sense sequence of target] tcaagaga [reverse complement sequence of target] tttttc-3' and [phos]5'-tcgagaaaaa [sense sequence of target] tctctgaa [reverse complement sequence of target] a-3'). The sequence information for control shRNA and various candidates of shRNA are listed in Table 1. Two oligos were annealed with annealing buffer (in mM; 200 potassium acetate, 60 HEPES-KOH, 4 Mg-acetate, pH 7.3 was adjusted by KOH) and incubated at 95°C for 5min and 70°C for 10 min. The annealed double-stranded oligo was inserted into HpaI-XhoI restriction enzyme sites of pSicoR lentiviral vector [44] (#11579, Addgene) and verified by sequencing. The shRNA containing pSicoR vectors were electroporated into cultured astrocytes. In experiments using triple combination of *TTYH* shRNA, we used either (pSicoR-*Ttyh1*-shRNA-GFP,

Table 1. List of shRNA and Knock-down percentages

Gene	Species	Accession #	Target sequences	Knock-down %	Test
Control		This paper	TCGCATAGCGTATGCCGTT	N/A	
<i>Aqp4</i>	<i>Mus musculus</i>	NM_001308641	GCACACGAAAGATCAGCATCG	87.22	in heterologous system by performing RT-PCR
		NM_001308642		verified in	
		NM_001308643		Woo et al., 2017	
		NM_001308644			
		NM_001308645			
		NM_001308646			
		NM_001308647			
		NM_001317729			
<i>mLrrc8a</i>	<i>Mus musculus</i>	NM_177725	GCCTGCATTGGTTTGCCAAGT	97.33	in heterologous system by performing Western-blot
<i>m/hLrrc8a</i>	<i>Homo sapiens (h)</i>	NM_001127244 (h)	CCATCATCAAGGTGATCAA	93.75	
	<i>Mus musculus (m)</i>	NM_001127245 (h)	GCACAACATCAAGTTCGACGT		
		NM_019594 (h)			
		NM_177725 (m)			
<i>Lrrc8c</i>	<i>Mus musculus</i>	NM_133897	GCTTCCAGCACTTGAGAAAGC	44.52 ±5.28	in cultured mouse cortical astrocytes by performing RT-PCR
<i>Best1</i>	<i>Mus musculus</i>	NM_011913	TTGCCAACTTGTC AATGAA	verified in	verified in Park et al., 2009
				Park et al., 2009	
<i>Ttyh1</i>	<i>Mus musculus</i>	NM_001001454	GCACAGAAGCCCTTGTATCC	90.84 ±0.53	in heterologous system by performing RT-PCR
		NM_001109765			
		NM_001305822			
		NM_021324			
<i>Ttyh2</i>	<i>Mus musculus</i>	NM_053273	GCATCTGCTATGATGGCATTG	70.53 ±5.45	
<i>Ttyh3</i>	<i>Mus musculus</i>	NM_001308040	GCATTGCAGTGGGATTCTACG	87.41 ±3.66	
		NM_175274			

Stereotaxic surgery for virus delivery

pSicoR-*Ttyh2*-shRNA-mcherry and pSicoR-*Ttyh3* shRNA-mcherry) or (pSicoR-scrambled-shRNA-GFP and pSicoR-scrambled-shRNA-mcherry). The sequence of each shRNAs are listed in the Table 1.

Stereotaxic surgery for virus delivery

The 7~9 weeks old male mice were anesthetized with 2% tribromoethanol (Avertin, 20 µl/g) and placed in a stereotaxic frame. The scalp was incised and exposed the skull. The connective tissue was gently scraped away. Stereotaxic coordinates were: AP: -1.7 mm; L: 1.7 mm; and DVL:-1.85 mm, according to Allen Mouse Brain Atlas (<http://www.brain-map.org>). The cocktail of lentiviruses carrying either (pSicoR-*Ttyh1*-shRNA-GFP, pSicoR-*Ttyh2*-shRNA-mcherry, and pSicoR-*Ttyh3*-shRNA-mcherry) or (pSicoR-scrambled-shRNA-GFP and pSicoR-scrambled-shRNA-mcherry) were bilaterally injected into hippocampal CA1 stratum radiatum of naïve C57BL/6J mice for slice patch-clamp recording or tamoxifen-treated hGFAP-creERT2 mice for intrinsic optical signal (IOS) imaging. The adeno-associated virus (AAV) of Lenti-virus carrying pSicoR-*Ttyh1*-shRNA-GFP or scrambled-shRNA-GFP was also injected into the CA1 *stratum radiatum* of naïve

C57BL/6J mice for confirming the knock-down efficiency with immunohistochemistry. 10~14 days after virus delivery by stereotaxic injection, the mice were sacrificed for next experiments at 9~10 weeks of age.

Astrocyte-specific rescue by tamoxifen-driven action of Cre-recombinase

The tamoxifen-inducible Cre-mediated recombination is expected to result in deletion of the floxed sequences. To activate Cre recombinase, 7~9 weeks-old male mice were administrated with tamoxifen (#T5648, Sigma-Aldrich) once a day (200 mg per kg of body weight, intraperitoneal) for 7 days. Tamoxifen was dissolved in sunflower oil (#1642347, Sigma-Aldrich) with 10% ethanol at a final concentration of 20 mg per milliliter at room temperature, and stored at 4°C in the dark. The shRNA is floxed with loxP sites in the pSicoR construct, which is cleaved by Cre-expression [44]. The cocktail of lentiviruses carrying pSicoR-*Ttyh1*-shRNA-GFP, pSicoR-*Ttyh2*-shRNA-mcherry and pSicoR-*Ttyh3*-shRNA-mcherry were injected into CA1 *stratum radiatum* of the hippocampus in tamoxifen-treated hGFAP-creERT2 transgenic mice, which allowed us to achieve astrocyte-specific recovery of TTYH

family expression in the hippocampal CA1 *stratum radiatum*.

Construction of *Ttyh1*-shRNA-insensitive-GFP vector

The design for *Ttyh1*-shRNA-insensitive-GFP clone construction was done by changing every third single nucleotide of *Ttyh1* shRNA target site to another nucleotide that makes same amino acid due to the codon redundancy (*Ttyh1*-shRNA target sequence- 5'-GCACAGAAGCCCTTGTATCC-3'; shRNA-insensitive sequence- 5'-GCGCAAAAACCTTTATTGTCA-3' included 7 mismatches, also described in Fig. 2B). The site-directed mutagenesis kit was used for the construction of *Ttyh1*-shRNA-insensitive-GFP vector (Ezchange™ site-directed mutagenesis kit, EZ400, Enzymonics). The sequence information of oligomers for cloning of mutants clone are listed in Supplemental Table 2.

Construction of truncation and single amino acid mutant vector

All truncation mutant and single amino acid mutants of TTYH1 were constructed in shRNA-insensitive TTYH1 tagged with GFAP clone (*Ttyh1* shRNA-insensitive-EGFP). Also, a single amino acid mutant of TTYH2 or TTYH3 were constructed in TTYH2 or TTYH3-IRES2-EGFP clone. All truncations, single amino acid mutants, and shRNA insensitive clones were made by site-directed mutagenesis kit (Ezchange™ site-directed mutagenesis kit, EZ400, Enzymonics).

Drugs and chemicals

4-(2-butyl-6,7-dichloro-2-cyclopentylindan-1-on-5-yl)oxybutyric acid (DCPIB), 2-(2-Amino-3-methoxyphenyl)-4H-1-benzopyran-4-one (PD98059) were purchased from Tocris (#1540, 1213). 4',5,7-Trihydroxyisoflavone, 5,7-Dihydroxy-3-(4-hydroxyphenyl)-4H-1-benzopyran-4-one (Genistein) was purchased from Sigma-Aldrich (#G6649). Other chemicals used for recording solution of electrophysiology and intrinsic optical signal imaging were purchased from Sigma-Aldrich.

Electrophysiology and solutions

For VRAC current (herein defined as Cl⁻ current induced by hypo-osmotic stimulation, I_{Cl,swell}) recording, primary cultured cortical astrocyte or transfected HEK292T or CHO cells, and acute hippocampal slices from 8~10 weeks mice were used for *in vitro* and *ex vivo* (slice) whole cell patch clamp recording, respectively. The preparation procedures with cultured coverslip and hippocampal slices followed a previous report [43]. In both *in vitro* and *ex vivo* whole cell patch clamp recording, we use the same internal and external solution; isotonic (ISO), hypo-osmotic solution (HOS). In case of *ex vivo* whole-cell patch clamp recording,

the slices were left to recover for at least 1 hour before recording in oxygenated (95% O₂ and 5% CO₂) artificial cerebrospinal fluid (aCSF) containing (in mM) 130 NaCl, 24 NaHCO₃, 3.5 KCl, 1.25 NaH₂PO₄, 1 CaCl₂, 3 MgCl₂, and 10 glucose (pH 7.4) at room temperature. After 1 hour, the slices were placed on a chamber with an aCSF solution. After complete rupture of the cell membrane, the external aCSF was changed to standard ISO solution for baseline recording.

Standard external bath solutions of both ISO and HOS for VRAC_{swell} were composed of (in mM): 70 Tris-HCl, 1.5 CaCl₂, 10 HEPES, and 10 glucose, 5 TEA-Cl, 5 BaCl₂, and adjusted to pH 7.3 with CsOH, as previously described [6]. The osmolality of each solution was adjusted with sucrose: 100 mM sucrose for 280~290 mOsm (for ISO) and 30 mM sucrose for 220~230 mOsm (for HOS), Solution osmolality was confirmed by a vapor pressure osmometer (Vapro osmometer #5600, Wescor). The external solution of both ISO(NaCl) and HOS(NaCl) for recording of LRRc8-mediated VRAC_r was composed of (in mM) : 150 NaCl for ISO(NaCl), 105 NaCl for HOS(NaCl), respectively, 6 KCl, 1 MgCl₂, 1.5 CaCl₂, 10 Glucose, 10 HEPES, adjusted to pH 7.4 with NaOH. The solution osmolality is 320mOsm for ISO(NaCl) and 240mOsm for HOS(NaCl). For Ca²⁺ dependency with TTYH mediated I_{Cl,swell}, 1.5 mM CaCl₂ is changed to 0.15 mM CaCl₂ for all external bath solution. TEA-Cl and BaCl₂ were added to eliminate the potassium currents enabling selective recording of Cl⁻ current. For glutamate permeability experiments, 70 mM Tris-Cl containing HOS external solution was substituted for 70 mM Tris-base and 70 mM glutamate (glutamate containing HOS, gHOS) to omit external Cl⁻. When the maximal current was generated after standard HOS treatment, the standard HOS (70 mM Tris-Cl) was changed to gHOS (70 mM Tris-glutamate). The reversal potentials from both standard HOS (70mM Tris-Cl) and gHOS (70mM Tris-glutamate) were measured to calculate the ratio of glutamate permeability (detailed description in the analysis of electrophysiological data).

For the recording of various anion (SCN⁻, I⁻, Br⁻, and F⁻) permeability, 105mM of NaCl in HOS (NaCl) was changed to the same concentration, 105mM of NaSCN, NaI, NaBr, and NaF at the maximal conductance of VRAC_{swell} or VRAC_r recording. The reversal potentials from each HOS(NaCl) (105mM NaCl) and HOS(NaX) (105mM NaSCN, NaI, NaBr, and NaF) were measured to calculate ratio of ion permeability (The calculating equation for of relative anion permeability is the same with glutamate permeability, detailed description in analysis of electrophysiological data).

Standard internal solution for VRAC_{swell} was composed of (in mM) : 60 Trizma-HCl, 70 Trizma-base, 70 Aspartic acid, 15 HEPES, 0.4 CaCl₂, 1 MgCl₂, 4 Mg-ATP, 0.5 Na-GTP, and 1 EGTA,

Table 2. Comparison of external and internal solutions in the current study and other previous studies

Solution	Constituents (in mM)	Current study (same as Valérie Crépel et. al., <i>J. Neurosci</i> (1998))		Felizia K. Voss et. al., <i>Science</i> (2014)		Zhaozhu Qiu et. al., <i>Cell</i> (2014)	
		ISO	HOS	ISO	HOS	ISO	HOS
External	Tris·Cl	70	70	-	-	-	-
	Na·Cl	-	-	150	105	90	90
	K·Cl	-	-	6	6	2	2
	Mg·Cl ₂	-	-	1	1	1	1
	Ca·Cl ₂	1.5	1.5	1.5	1.5	1	1
	HEPES	10	10	10	10	10	10
	Glucose	10	10	10	10	-	-
	TEA·Cl	5	5	-	-	-	-
	Ba·Cl ₂	5	5	-	-	-	-
	Osmolarity	Adding sucrose up to 290mOsm	Adding sucrose up to 220mOsm	-	-	Mannitol 110	Mannitol 10-60
	pH	pH7.3 by CsOH		pH7.4 by NaOH		pH7.4 by NaOH	
Internal	Tris·Cl	60	-	-	-	-	-
	Tris·Aspartate	70	-	-	-	-	-
	Cs·Cl	-	-	40	-	133	-
	Cs·MeS	-	-	100	-	-	-
	HEPES	15	-	10	-	10	-
	Ca·Cl ₂	0.4	-	1.9	-	2	-
	Mg·Cl ₂	1	-	1	-	1	-
	EGTA	1	-	5	-	5	-
	ATP	4	-	4	-	4	-
	GTP	0.5	-	-	-	0.5	-
	pH	pH7.25 by CsOH		pH7.2 by CsOH		pH7.2 by CsOH	

adjusted to pH 7.25 with CsOH, as previously described [6].

The internal solution for recording of LRRC8-mediated VRAC_T was composed of (in mM) : 40 CsCl, 100 CsMeS, 1 MgCl₂, 1.9 CaCl₂, 5 EGTA, 4 Na₂ATP, 10 HEPES, adjusted to pH 7.2 with CsOH, as previously described (Voss et al., 2014). For Ca²⁺ free experiment, 1mM EGTA was replaced into 20mM BAPTA which leads 100nM free Ca²⁺ to be reduced by 10nM. Patch pipettes had tip resistances of 5~8MΩ when filled with internal solution. Pipettes were pulled from borosilicate thin-wall glass capillaries (TW150F-4, World Precision Instruments) with the micropipette puller (P-97, Sutter Instrument). Unlike other previous studies [25, 26], we used Tris·Cl-based external solution without Na⁺ and K⁺ and minimal level of Cs⁺ (15mM of CsOH for pH adjustment of external solution), and Tris·Cl-based internal solution to eliminate any contribution of Na⁺, K⁺ and to minimize Cs⁺ to I_{Cl,swell}. This is particularly important for isolating the anionic current (See Table 2).

For substituted-cysteine accessibility method (SCAM), 10 amino acids in TTYH1 (from V161 to A170) were each substituted with cysteine residue. The cysteine mutant of TTYH1 or TTYH1-WT were co-transfected with AQP4 in HEK29T cells. The standard bath solution of HOS containing MTSES (100mM) was applied at

the maximal I_{Cl,swell}. The percent block was determined.

To test the dominant negative function of TTYH1-R165A, pEGFP-N1-TTYH1-WT and pEGFP-N1-TTYH1-R165A were co-expressed with mAQP4-M1-mcherry in HEK293T cells. The total DNA amount of TTYH1 (WT or R165A) is 2 mg and AQP4 is 750ng. The relative amount of R165A to WT is varied with 1:0, 0.75:0.25, 0.5:0.5, 0.25:0.75, and 0:1. The maximal current of I_{Cl,swell} was recorded in each condition by treatment of a standard solution of HOS.

To identify shRNA-transfected or infected astrocytes from primary cultures or hippocampal slices, GFP or mcherry fluorescence was used (Fig. 10D and 11J), which were driven under CMV promoter in pSicoR vector construct (Fig. 11I). In the case of hippocampal slices, astrocytes were distinguished by electrophysiological properties such as low membrane resistance (R_m), low resting membrane potential after rupturing. The whole cell configuration was achieved by rupturing the cell membrane with suction after achieving a giga-seal. Holding voltage was -60 mV. Stability and quality of the patch were determined by monitoring the cell parameters: R_m, cell capacitance (C_m), and series resistance (R_a).

The episodic ramp protocol (+100 mV to -100 mV, 1000 ms, 15 s interval) for measurement of the maximal conductance of VRAC_{swell}

and VRAC_T and the current step protocol (from -100 mV to +140 mV with 20 mV step) for measurement of the voltage-dependent inactivation of VRAC_{swell} and VRAC_T were given and recorded with a Digidata 1322A interface and pClamp10 software (Molecular Devices). A continuous gap-free recording was simultaneously conducted with Minidigi digitizer and Axoscope10 software (Axon Instruments).

Analysis of electrophysiological data

For drawing the I-V curve for I_{Cl,swell}, the averaged mean value and standard error of mean (SEM) at every 5 mV are plotted. The current density (pA/pF) of I_{Cl,swell} was measured by subtraction of maximal Cl⁻ current (average of maximal 4weeps in HOS treatment) from basal Cl⁻ current (average 4weeps of ISO treatment, 1 min before HOS treatment) divided by the capacitance of the membrane (C_m), and measured the amplitude of current density (pA/pF, from -100 mV to 100 mV) by I_{Cl,swell} (at 100 mV) - I_{Cl,swell} (at -100 mV). Rectification index was defined here as the following equation.

$$\text{Rectification index} = \frac{|I_{Cl^-,swell}^{-100mV}|}{|I_{Cl^-,swell}^{+100mV}|}$$

To examine the glutamate permeability (P_{glu}) of VRACs, we measured the reversal potential shift of I_{Cl,swell} caused by external solution change from standard HOS solution (70 mM Tris-Cl) to gHOS (70 mM Tris-glutamate) solution, which was corrected for junction potential (9.4mV). The detailed composition of the gHOS solution is described above. The reversal potential of I_{Cl,swell} was calculated with following Goldman-Hodgkin-Katz (GHK) equation.

$$E_{rev} = \frac{RT}{F} * \ln \left(\frac{P_{Cl}[Cl^-]_i + P_{glu}[glu]_i}{P_{Cl}[Cl^-]_o + P_{glu}[glu]_o} \right)$$

With this equation, reversal potential difference (ΔE_{rev}) was calculated as (previously also shown in [35, 45]).

$$\Delta E_{rev} = \frac{RT}{F} * \ln \left(\frac{P_{Cl}[Cl^-]_i + P_{glu}[glu]_i}{P_{Cl}[Cl^-]_{HOS} + P_{glu}[glu]_{HOS}} \right) - \frac{RT}{F} * \ln \left(\frac{P_{Cl}[Cl^-]_i + P_{glu}[glu]_i}{P_{Cl}[Cl^-]_{gHOS} + P_{glu}[glu]_{gHOS}} \right)$$

The 'i' and 'o' indicates internal and external solution respectively. HOS and gHOS represent standard hypo-osmotic stimulation condition and glutamate containing HOS condition respectively.

Intrinsic optical signal imaging

For IOS imaging devices, Infrared (IR) light source with optical filter (775 nm wavelength, Omega Filters) was used for transillumination of brain slices and these optical signals were obtained as IOS images using a microscope (BX50WI, Olympus) equipped with a CCD camera (ORCA-R2, Hamamatsu). Imaging Workbench software (INDEC Biosystems) was used for image acquisition and image analysis.

For the detailed procedure of experiments, we first prepared mouse brain hippocampal slices (described in the methods for electrophysiology). Next, we fixed hippocampal slice into the recording chamber and positioned electrical stimulator in the CA1 stratum radiatum region. We determined the region of interest (ROI) by calculating 1.5~2% increase in IOS by single pulse electrical stimulation (20Hz, 1 sec, 200~300mA). Images were acquired every 1 second and after stabilization of the IOS signal, we acquired 10 min baseline IOS transmittance (T_{base}). Next, we applied 1Hz-30min electrical stimulation (which has been previously shown to induce activity-dependent cell swelling [2]) and acquired two IOS indexes required for analysis: maximum IOS transmittance (T_{max}) and final IOS transmittance (T_{end}). With these defined indicators, we calculated the induced maximal volume increase (b) and regulated volume decrease (a) as T_{max}-T_{base} and T_{max}-T_{end} respectively (Fig. 11C, E, and J). Finally, the percentage of regulated volume decrease (RVD%) was calculated by

$$RVD\% = \frac{a}{b} * 100$$

Quantitative real-time PCR and reverse transcription PCR

Gene silencing test with shRNAs that target VRAC candidates including *Best1*, *Ttyh1,2* and *3*, *LRRC8A* and *C* were tested by quantitative real-time PCR (qRT-PCR). All shRNAs were electroporated into cultured cortical astrocytes. Approximately 3 days after electroporation, total RNA was extracted by using RNA isolation kit (RNeasy Mini Kit, #74104, Qiagen). cDNA was synthesized by using reverse transcriptase (SuperScript III reverse transcriptase, #18080-044, Invitrogen). For qRT-PCR, SYBR-green (SYBR Green PCR master mix, #4309155, Applied Biosystems) were used. Primers for qRT-PCR for each gene were listed in Supplemental Table 2.

Western blot and surface biotinylation assay

The knock-down efficiency of *mLrrc8a* shRNA or *m/h Lrrc8a* shRNA was confirmed by performing western blot. mLRR8A-GFP with control or *mLrrc8a* shRNA or *m/h Lrrc8a* shRNA-mcherry were co-transfected with HEK293T cells. After the 30hr, the transfected HEK293T cells were lysed with RIPA buffer (#R4100, GenDEPOT) containing protease inhibitor cocktail

(#P3100, GenDEPOT). 30 µg of protein lysates were separated by protein electrophoresis using protein gels (#4561084, BIORAD) and blotted onto PVDF membranes (#1704156, BIORAD). The blots were incubated overnight at 4°C with chicken anti-GFP (1:5000, #AB13970, Abcam) and rabbit anti-β-actin (1:5000, #AB133626, Abcam). Blots were then washed and incubated with horseradish peroxidase-conjugated rabbit anti-chicken IgY (1:3000, #AP162P, Millipore), goat anti-rabbit IgG (1:3000, #AB6721, Abcam), respectively. The immunoreactivity with enhanced chemiluminescence (GE Healthcare Life Sciences). The band intensity was acquired by ImageQuant LAS 4000 (GE Healthcare) and quantified using ImageJ software (NIH). For surface biotinylation, wild-type, several truncated mutant or single amino acid mutants of mTTYH1-EGFP with AQP4 overexpressing HEK293T cells were incubated at 4°C and washed three times with PBS. Surface-expressed proteins were then biotinylated in PBS containing Ez-link sulfo-NHS-LC-Biotin (Thermo 21335) for 30 min. After biotinylation, cells were washed with quenching buffer (100 mM glycine in PBS) to remove excess biotin and then washed three times with PBS. The cells were then lysed and incubated with high capacity NeutrAvidin-Agarose Resin (Thermo 29204). After three washes with lysis buffer, bound proteins were eluted by SDS sample buffer and subjected to western blot analysis. Primary antibody was rabbit anti-GFP (Millipore, AB3080). The secondary antibody was Donkey anti-rabbit HRP (Amersham, NA9340).

Immunocytochemistry

To determine whether the direction of N-, C-terminus, and Loop1 of TTYH1 are located in the cytosolic or extracellular side, HEK293T cells were transfected with TTYH1-EGFP or TTYH1-GFP (Loop1-FLAG), grown on coverslips for 24 hours. The cells were fixed in 4% paraformaldehyde for 30 min at room temperature. The permeabilized group are treated PBS with 3% Triton X-100 for 5 min and the non-permeabilized group is treated PBS for 5min. Non-specific binding was prevented with 1-hour incubation in 2% donkey serums. Cells were incubated the rabbit anti-Ttyh1 (for N-terminus of TTYH1, #NBP1-59909, Novus Biologicals), anti-GFP (for C-terminus of TTYH1, #ab13970, Abcam), and anti-FLAG (for Loop1 of TTYH1, #F1804, Sigma-Aldrich) primary antibodies for overnight at 4°C. After washing, DyLight 594-conjugated secondary antibody (Jackson lab, 1:400) was added and incubated for 2 hours at room temperature. The cells were washed and mounted, and then observed under a Nikon A1 confocal microscope.

Immunohistochemistry

Mice under anesthesia with 2% tribromoethanol (avertine, 20 µl/g) and were trans-cardially perfused with 0.9% saline followed by 4% PFA, and then the brains were removed. The dissected brains were post-fixed with 4% PFA at 4°C for 18~24 hours and dehydrated with 30% sucrose at 4°C for 48 hours. For immunostaining, brain sections with a thickness of 30 µm were cut using a cryostat, blocked with the serum (donkey serum 2%, goat serum 2%, the solution including 0.3% Triton X-100) of the appropriate species for 1 hour and then treated with primary antibodies, including rabbit anti-TTYH1 (1:200, #NBP1-59909, Novus Biologicals), chicken anti-GFAP (1:500, #ab5541, Millipore), mouse anti-NeuN (1:500, #MAB377, Millipore), DAPI (1:5000, #46190, Chemicon). During over-night. The next day, tissues were rinsed 3 times with 0.1M PBS and subsequently incubated with secondary antibodies conjugated with Alexa Fluor 488, 594 and 647 for 1 hour 30 min. After treating with secondary antibodies, the tissues were washed out with PBS including DAPI staining in the second washing step. After three rinses in PBS, the sections were mounted on slide glasses. Images were acquired on a Nikon A1 confocal microscope.

Analysis of immunohistochemistry

Statistical analyses were performed using ImageJ software (NIH Image). For analyzing the knock-down efficiency of AAV-virus containing control or *Ttyh1/2/3* shRNA, we measured the TTYH1 intensity in the binary image of GFAP positive (+) cells. The statistical analysis of TTYH1 intensity in GFAP (+) cells between control and *Ttyh1/2/3* shRNA groups were analyzed with the two-tailed Mann-Whitney t-test.

Bioinformatics and statistical analysis

Publicly available brain RNA-seq data sets [42] of VRAC candidates such as TTYH, LRRC8, BEST family were used in Fig. 1D (https://web.stanford.edu/group/barres_lab/brain_rnaseq.html). Multiple alignments of amino acids were processed from CLUSTAL OMEGA (<http://www.ebi.ac.uk/Tools/msa/clustalo/>). The dendrogram was drawn by the PHYLIP program. The prediction of the transmembrane domain of TTYH family was processed by TMHMM (<http://www.cbs.dtu.dk/services/TMHMM/>). The potential phosphorylation site and kinases were predicted by GPS 3.0 (<http://gps.biocuckoo.org/online.php>). Statistical analysis was performed using GraphPad Prism 7.01 software. $p < 0.05$ was considered statistically significant. No statistical methods were used to predetermine sample size. All statistical analysis results and methods were described in the Supplemental Table 1 for main figures.

Quantification and statistical analysis

Statistical parameters including the exact value of n, the definition of center, dispersion and precision measures (mean ± SEM) and statistical significance are reported in the Supplemental Table 1. All data points are tested if the values come from a Gaussian distribution by D’Agostino-Pearson omnibus normality test, and then appropriate statistical methods are applied. In figures,

asterisks denote statistical significance as *, p<0.05; **, p<0.01; ***, p<0.001; ****, p<0.000, as well as non-significance with NS, p>0.05. Statistical analysis was performed in GraphPad PRISM 7.

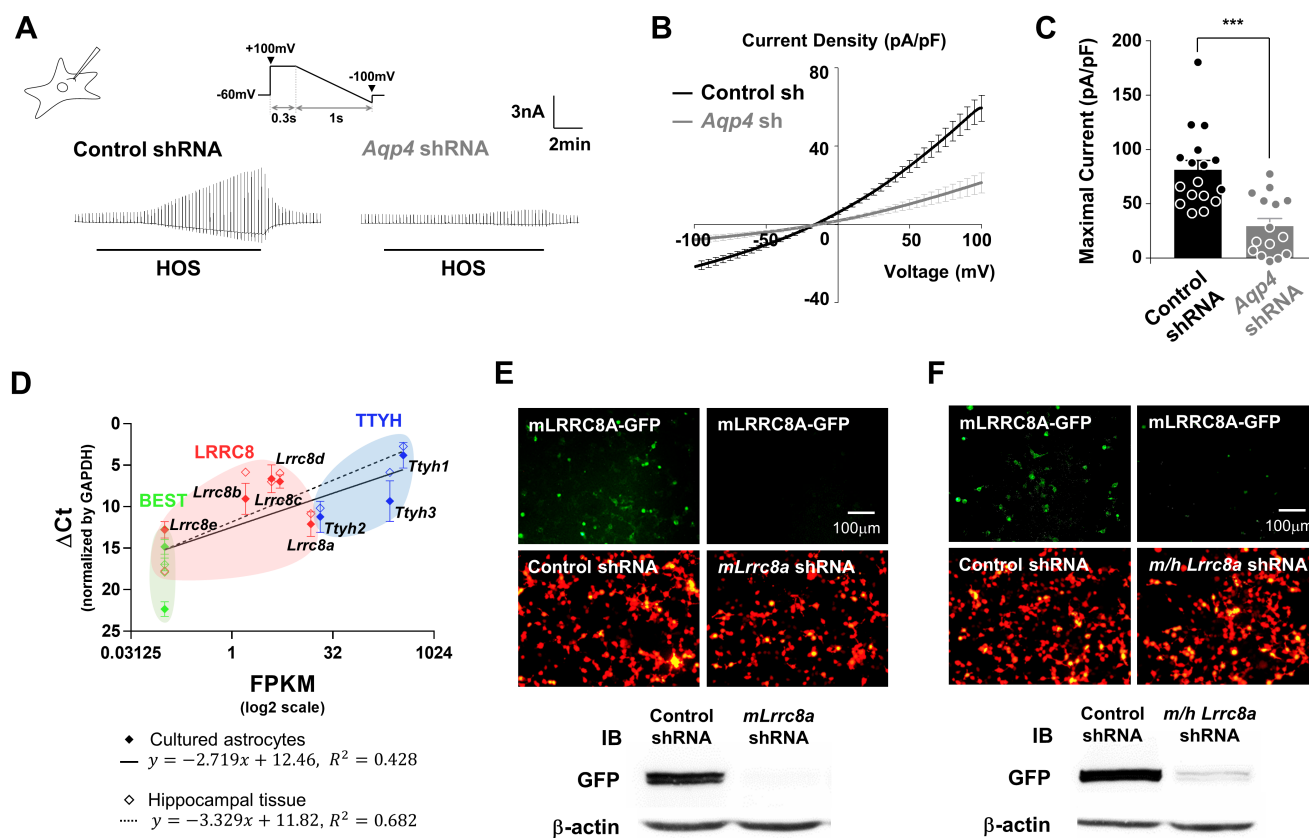


Fig. 1. Neither *Lrrc8a* nor *Best1* encodes the pore-forming subunit of astrocytic VRAC_{swell}. (A) Representative HOS-induced current ($I_{Cl,swell}$) recordings from control shRNA and *Aqp4* shRNA-expressing cultured astrocytes. Inset (left): schematic diagram of whole-cell patch-clamp recording in primary cultured astrocyte. Inset (right): schematic diagram of ramp protocol from +100mV to -100mV. (B) Averaged I~V curves for $I_{Cl,swell}$ in control shRNA (black) and *Aqp4* shRNA (grey). (C) Summary bar graph showing the maximal amplitude of $I_{Cl,swell}$ from +100 mV to -100 mV. Data are represented as mean±SEM (n=17 for control shRNA and n=15 for *Aqp4* shRNA; ***p<0.001, Mann-Whitney test). (D) Inverse correlation between the Δ Ct value normalized by GAPDH measured by quantitative real-time quantitative PCR (qPCR) using cDNAs from hippocampal tissue (empty diamond), cultured cortical astrocytes (filled diamond) and FPKM value by RNA-sequencing that was previously shown in previous study (Zhang et al., 2014) to check relative mRNA expression of VRAC candidates such as *Ttyh* (*Ttyh1*, *Ttyh2* and *Ttyh3*), *Lrrc8* (*Lrrc8a*, *Lrrc8b*, *Lrrc8c*, *Lrrc8d* and *Lrrc8e*), and *Best* (*Best1*, *Best2* and *Best3*) family. Data are represented as mean±SEM of Δ Ct normalized by GAPDH (n=3 for cultured astrocytes and n=2 for hippocampal slices; $R^2=0.428$ for cultured astrocytes and $R^2=0.682$ for hippocampal slices; nonlinear regression). (E, F) Upper panels, fluorescence images of mLRRC8A-GFP and control or *mLrrc8a* or *m/hLrrc8a* shRNA-mcherry co-expressing HEK293T cells. Bottom panels, western blot results confirming the efficiency for *mLrrc8a* shRNA or *m/hLrrc8a* shRNA compare to control shRNA in mLRRC8A-overexpressed HEK293T cells. (G) Representative $I_{Cl,swell}$ recordings from control shRNA, *Lrrc8a* shRNA, *Lrrc8c* shRNA and both *Lrrc8a* and *c* shRNAs-expressing cultured astrocytes. (H) Averaged I~V curves for $I_{Cl,swell}$ in control shRNA (black), *Lrrc8a* shRNA (orange), *Lrrc8c* shRNA (green) and both *Lrrc8a* and *c* shRNAs (sky blue). (I) Summary bar graph showing the maximal amplitude of $I_{Cl,swell}$ from +100 mV to -100 mV. Data are represented as mean±SEM (n=11 for control shRNA, n=9 for *Lrrc8a* shRNA, n=8 for *Lrrc8c* shRNA, and n=9 for *Lrrc8a/c* shRNA; NS>0.05, ordinary one-way ANOVA). (J-L) Representative traces, averaged I~V curves and summary bar graphs of maximal $I_{Cl,swell}$ currents from control or BEST1 KO mice in cultured astrocytes (n=14 for WT and n=10 for BEST1 KO; NS>0.05, Mann-Whitney test). (M~O) Representative traces, averaged I~V curves and summary bar graphs of maximal $I_{Cl,swell}$ currents from control (n=11) or BEST1 shRNA expressing condition (n=10) in cultured astrocytes (n=11 for control shRNA and n=10 for *Best1* shRNA; NS; p>0.05, Two-tailed unpaired t-test).

RESULTS

Neither *Lrrc8a* nor *Best1* encodes the astrocytic $VRAC_{swell}$

Previous studies suggested that water movement via AQP4 is critical for an initial volume increase which then somehow triggers an opening of $VRAC_{swell}$ in astrocytes [46]. To test the requirement of AQP4 for activation of $VRAC_{swell}$, we recorded $I_{Cl,swell}$ under voltage-clamp configuration from cultured mouse astrocytes expressing either control or *Aqp4* shRNA. To isolate genuine $I_{Cl,swell}$ without any current contaminated by cations, we used a special recipe of intracellular and extracellular solutions as previously described (see Table 2 in Materials and Methods) [6]. HOS-treatment caused a slow onset of Cl^- conductance increase as a series of vertical lines representing the current trace in response to a periodic voltage

ramp from +100 mV to -100 mV (Fig. 1A inset). We found that the $I_{Cl,swell}$ was mostly abolished by *Aqp4* shRNA (Fig. 1A~C, see Table 1 in Materials and Methods). Consistent with previous reports [46], these results indicate that astrocytes regulate their volume with water movement through AQP4.

Previously, two groups concurrently reported that LRRC8A is an essential component of $VRAC_T$ in various cell lines [25-27]. Thus, we tested whether LRRC8A is the major component of $VRAC_{swell}$ in astrocytes. We developed a specific shRNA for *Lrrc8a* and *Lrrc8c*, which shows relatively higher mRNA expression than other *Lrrc8* isoforms in cultured astrocytes (Fig. 1D~F, see Table 1 in Materials and Methods). We observed that the maximal amplitude of $I_{Cl,swell}$ was not affected by *Lrrc8a* shRNA or *Lrrc8c* shRNA or both (Fig. 1G~I). Taken together, these results indicate that LR-

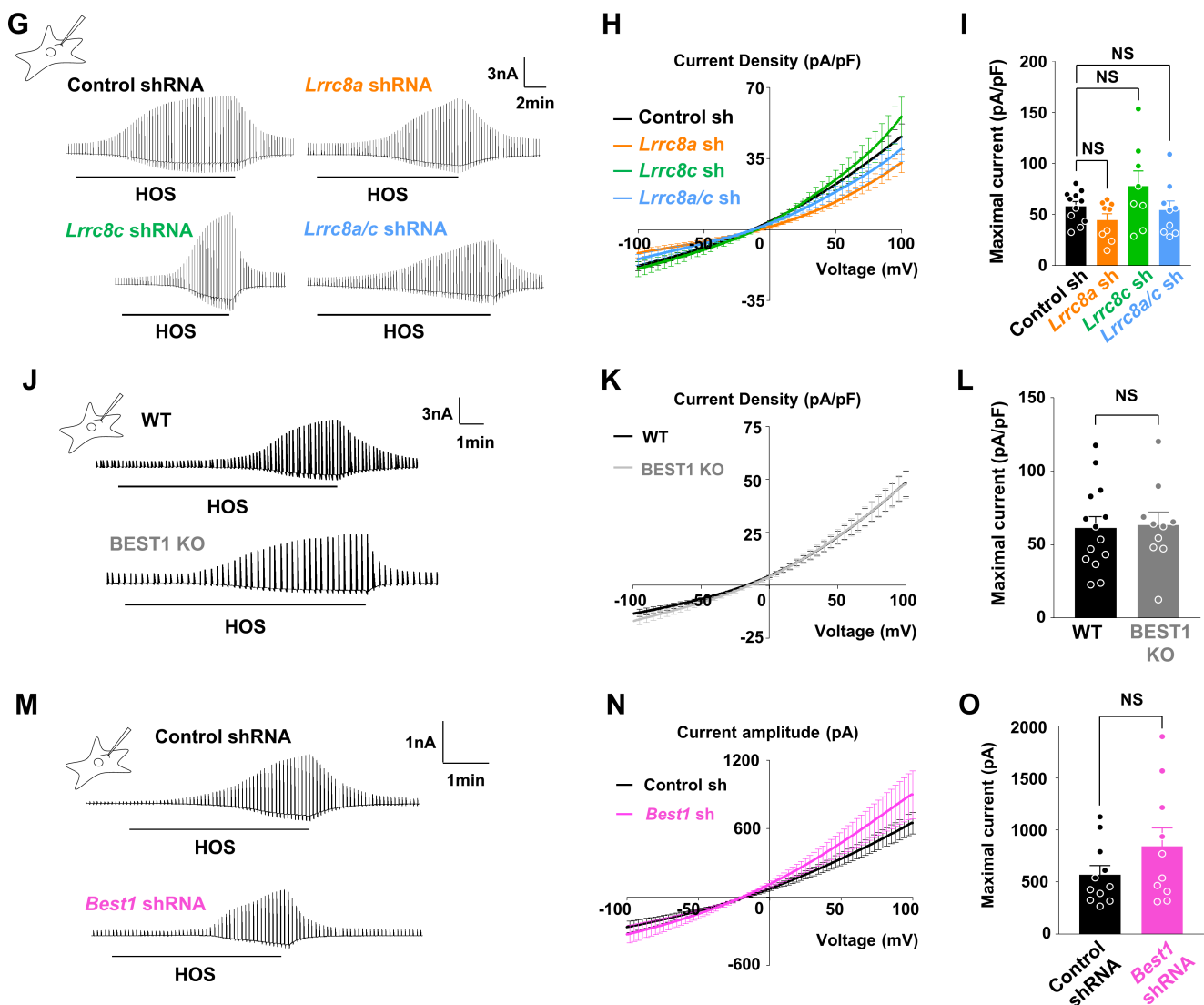


Fig. 1. Continued.

RC8A and C do not contribute majorly to the astrocytic VRAC_{swell}.

It has been subsequently contended that BEST1, not LRRC8A, is indispensable for volume regulation in hiPSC-RPE cells [36]. Over the years, we have extensively characterized BEST1 as a Ca²⁺-activated anion channel, localized at peri-synaptic sites of the hippocampal astrocytes, functioning as the glutamate- and GABA-permeable channel in cerebellum and hippocampus, respectively [47]. To test whether there is any contribution of BEST1 in the astrocytic VRAC_{swell}, we utilized previously characterized BEST1 knockout mouse [48] and *Best1* shRNA [45]. We observed that I_{Cl,swell} was normally generated in either cultured astrocytes from BEST1 knockout mice or in *Best1* shRNA expressing astrocytes (Fig. 1J~O), eliminating the possibility that BEST1 contributes to the astrocytic VRAC_{swell}. Taken together, the astrocytic VRAC_{swell} is not encoded by *Lrrc8a* or *Best1*.

***Ttyh* family of genes encode the essential components of the astrocytic VRAC_{swell}**

We next focused on *Ttyh* family as the candidate genes for VRAC_{swell}. Firstly, we confirmed that cultured astrocytes show much higher mRNA expression of *Ttyh1/2/3*, compared to other VRAC_{swell} candidates such as *Lrrc8* and *Bestrophin* family (Fig. 1D), as previously reported [42]. Thus, we developed and tested the *Ttyh* isoform-specific shRNAs (Fig. 2A) on the astrocytic I_{Cl,swell}. We found that the astrocytic I_{Cl,swell} was almost completely abolished by a combination of all three *Ttyh1/2/3* shRNAs, but not by a single *Ttyh* shRNA or any combination of double *Ttyh* shRNAs (Fig. 2E~H). To exclude any possibility of off-target effect by shRNAs, we developed a fully functional shRNA-insensitive clone of TTYH1 (Fig. 2B~D). We found that in astrocytes co-expressing all *Ttyh1/2/3* shRNAs with shRNA-insensitive form of TTYH1, the I_{Cl,swell} was fully recovered to the control level (Fig. 2G and 2H). Taken together, these results indicate that TTYH family are necessary for the astrocytic VRAC_{swell} with functional redundancy.

The reduction of I_{Cl,swell} by *Ttyh1/2/3* shRNAs might be due to two possibilities: a reduction of the pore-forming subunits of VRAC_{swell} to reduce the amplitude of I_{Cl,swell} or a reduction of a modulatory protein of VRAC_{swell} to reduce the activation kinetics of I_{Cl,swell}. To distinguish these two possibilities, we analyzed the current kinetics of I_{Cl,swell} by plotting the average current density of I_{Cl,swell} versus time after HOS treatment (Fig. 2I and 2K). To compare each shRNA condition, we normalized current density by the maximum to calculate the time to reach 50% of peak (Fig. 2J and 2L). We found that the maximal current density at both +100mV and -100mV was dramatically decreased in *Ttyh1/2/3* shRNAs expressing astrocytes compared to control shRNA (Fig. 2I). However, the time to reach 50% of peak was not significantly different

(Fig. 2J, inset), suggesting that the current reduction by *Ttyh1/2/3* shRNAs was due to a reduction of the pore-forming VRAC_{swell} subunits. In contrast, we found that the maximal current density at both +100mV and -100mV was not significantly different in *Lrrc8a* shRNA condition compared to control shRNA (Fig. 2K). However, the time to reach 50% of peak in *Lrrc8a* shRNA expressing astrocytes was significantly slower compared to control shRNA condition (Fig. 2L, inset), indicating that *Lrrc8a* shRNA slows the activation of VRAC_{swell} without affecting the maximal amplitude of I_{Cl,swell}. Taken together, these results suggest that TTYH1/2/3 are the essential component of VRAC_{swell}, whereas LRRC8A might act as a modulatory channel of VRAC_{swell}.

Each TTYH1/2/3 isoform is sufficient for VRAC_{swell} activity

To test if each TTYH isoform confers VRAC_{swell} activity, we transiently expressed each TTYH isoform clone in HEK293T cells together with AQP4 to maximize HOS-induced volume increase and recorded I_{Cl,swell} (Fig. 3A~C). We found that each TTYH isoform co-expressed with AQP4 showed significantly increased I_{Cl,swell} compared to the condition of AQP4 alone (Fig. 3A~C), indicating that all three isoforms of TTYH are sufficient for activation of the I_{Cl,swell} in the presence of AQP4 and that each isoform of TTYH family can mediate VRAC_{swell} possibly as a homomeric channel. In marked contrast, LRRC8A has been repeatedly shown to be insufficient for VRAC_{swell} activity in heterologous expression systems [25, 26, 28, 31]. Consistently, we did not observe I_{Cl,swell} in CHO-K1 cells co-expressing LRRC8A and AQP4 (Fig. 3D~F), indicating that LRRC8A is not sufficient for VRAC_{swell}.

The unexpected lack of HOS-induced I_{Cl,swell} in naïve HEK293T cells (Fig. 3A~C) was a surprising observation which called for further investigation. In the past, LRRC8A-mediated VRAC_T in naïve HEK293T cells has been recorded with external solution containing cations such as Na⁺, Cs⁺, or K⁺ (see Table 2 in Materials and Methods). In contrast, the external solutions that we have utilized contain minimal cations as previously described for the recording of astrocytic VRAC [6]. Therefore, we directly tested the two different solutions in native HEK293T cells. By surprise, we found that I_{Cl,swell} was not observed when the native HEK293T cells with endogenous LRRC8A-mediated VRAC_T was treated with the HOS which contained minimal cations, whereas a robust I_{Cl,swell} was induced by the Na⁺-containing HOS (Fig. 3G~I), suggesting that an activation of LRRC8A either requires external cation or possesses a sensitivity to Tris. To further confirm whether this I_{Cl,swell} induced by Na⁺-containing HOS was mediated by LRRC8A, we engineered previously reported *Lrrc8a* shRNA [49] which targets both human and mouse LRRC8A (Fig. 1F). We found that the I_{Cl,swell} induced by Na⁺-containing HOS was almost completely eliminated by the *m/*

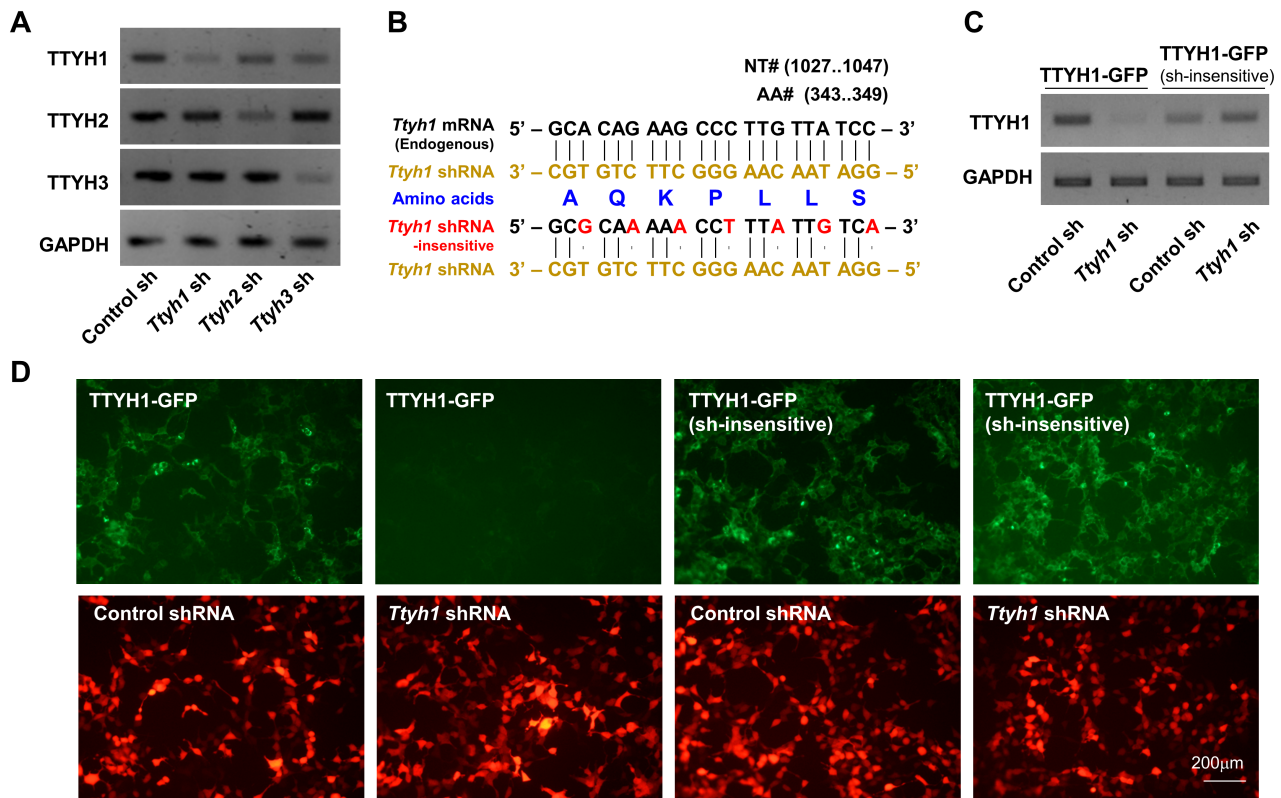


Fig. 2. *Ttyh* family of genes encode the essential components of the astrocytic VRAC_{swell}. (A) RT-PCR results confirming the efficiency of each *Ttyh1/2/3* shRNA in cultured astrocytes. Lentivirus containing each pSicoR *Ttyh1/2/3* shRNA were infected in cultured astrocytes. (B) Schematic diagram of the design of shRNA-insensitive clone of TTYH1. The upper sequence represents endogenous *Ttyh1* mRNA sequence that is complemented with *Ttyh1* shRNA. The lower sequence represents shRNA-insensitive clone of TTYH1 sequence that is not complemented with *Ttyh1* shRNA due to changing every third single nucleotide of *Ttyh1* shRNA target site to another nucleotide that makes same amino acid due to the codon redundancy. (C) RT-PCR results confirming the efficiency for shRNA-insensitivity using shRNA-insensitive clone of TTYH1 with control or *Ttyh1* shRNA compared to TTYH1-GFP with control or *Ttyh1* shRNA overexpressing HEK293T cells. (D) Fluorescence images of TTYH1-GFP and shRNA-insensitive clone of TTYH1 with control or *Ttyh1* shRNA expressing HEK-293T cells. (E) Representative $I_{Cl,swell}$ from control shRNA, *Ttyh1/3* shRNAs, *Ttyh1/2/3* shRNAs, *Ttyh1/2/3* shRNAs with shRNA-insensitive clone of TTYH1 (*Ttyh1* sh-insens.) expressing cultured astrocytes. (F) Summary bar graph showing the maximal amplitude of $I_{Cl,swell}$ from +100 mV to -100 mV in the presence of single *Ttyh* shRNA or any combination of double *Ttyh* shRNAs (*T1/2/3*, *T1/2*, *T1/3*, *T2/3* shRNAs). Data are represented as mean±SEM (n=10 for Naïve, n=14 for 7mg of control shRNA, n=10, 12 and 8 for 7mg of single *Ttyh1*, *Ttyh2*, and *Ttyh3* shRNA, n=8 for 14mg of control shRNA, n= 10, 10 and 10 for 14mg of double *Ttyh1/2*, *Ttyh1/3*, and *Ttyh2/3* shRNAs; NS>0.05, Kruskal-Wallis test). (G) Summary bar graph showing the maximal amplitude of $I_{Cl,swell}$ from +100 mV to -100 mV in naïve astrocytes and in the presence of control or *Ttyh1/2/3* shRNAs and *Ttyh1/2/3* shRNAs with shRNA-insensitive clone of TTYH1 expressing cultured astrocytes. Data are represented as mean±SEM (n=10 for Naïve, n=11 for control shRNA, n=13 for *Ttyh1/2/3* shRNAs, and n=18 for *Ttyh1/2/3* shRNAs with shRNA-insensitive clone of TTYH1; ***<0.001, NS>0.05, Ordinary one-way ANOVA). (H) Averaged I~V curves for $I_{Cl,swell}$ in Control shRNA (grey), *Ttyh1/2/3* shRNAs (*T1/2/3* shRNAs, blue) and *T1/2/3* shRNAs with shRNA-insensitive clone of TTYH1 (*Ttyh1* sh-insens; red). (I, K) Averaged current density values at ±100mV in every minute after HOS treatment in control (black), *Ttyh1/2/3* shRNAs (blue) and *Lrrc8a* (orange) expressing cultured astrocytes. Dot points are represented as mean±SEM. Lines (dark grey, sky blue, and orange) between each value were drawn by the fitting of sigmoidal 4th order function. (n=11 for both control shRNA (grey), n=13 for *Ttyh1/2/3* shRNA (sky blue), and n=9 for *Lrrc8a* shRNA (orange)). (J, L) Normalized current density from +100 mV to -100 mV by maximum current amplitude in every minute after HOS treatment. Dot points are represented as mean±SEM. Lines (dark grey, sky blue, and orange) between each value were drawn by the fitting of sigmoidal 4th order function. (n=11 for both control shRNA (grey), n=13 for *Ttyh1/2/3* shRNA (blue), and n=9 for *Lrrc8a* shRNA (orange)). Inset: The averaged time to 50% of peak. Data are represented as mean±SEM (n=11 for both control shRNAs, n=13 for *Ttyh1/2/3* shRNA, and n=9 for *Lrrc8a* shRNA).

h Lrrc8a shRNA and overexpression of TTYH1 and AQP4 along with *Lrrc8a* shRNA caused a robust $I_{Cl,swell}$ (Fig. 3J~L), indicating that TTYH1 is sufficient for VRAC_{swell} even in the absence of LRRC8A. Furthermore, the same *m/h Lrrc8a* shRNA did not have

any effect on the maximal amplitude of $I_{Cl,swell}$ induced by the HOS which contained minimal cations in astrocytes (Fig. 3M~O) as well as in TTYH1 and AQP4 over-expressing HEK293T cells (Fig. 3P~R). These results indicate that LRRC8A-mediated VRAC_r is

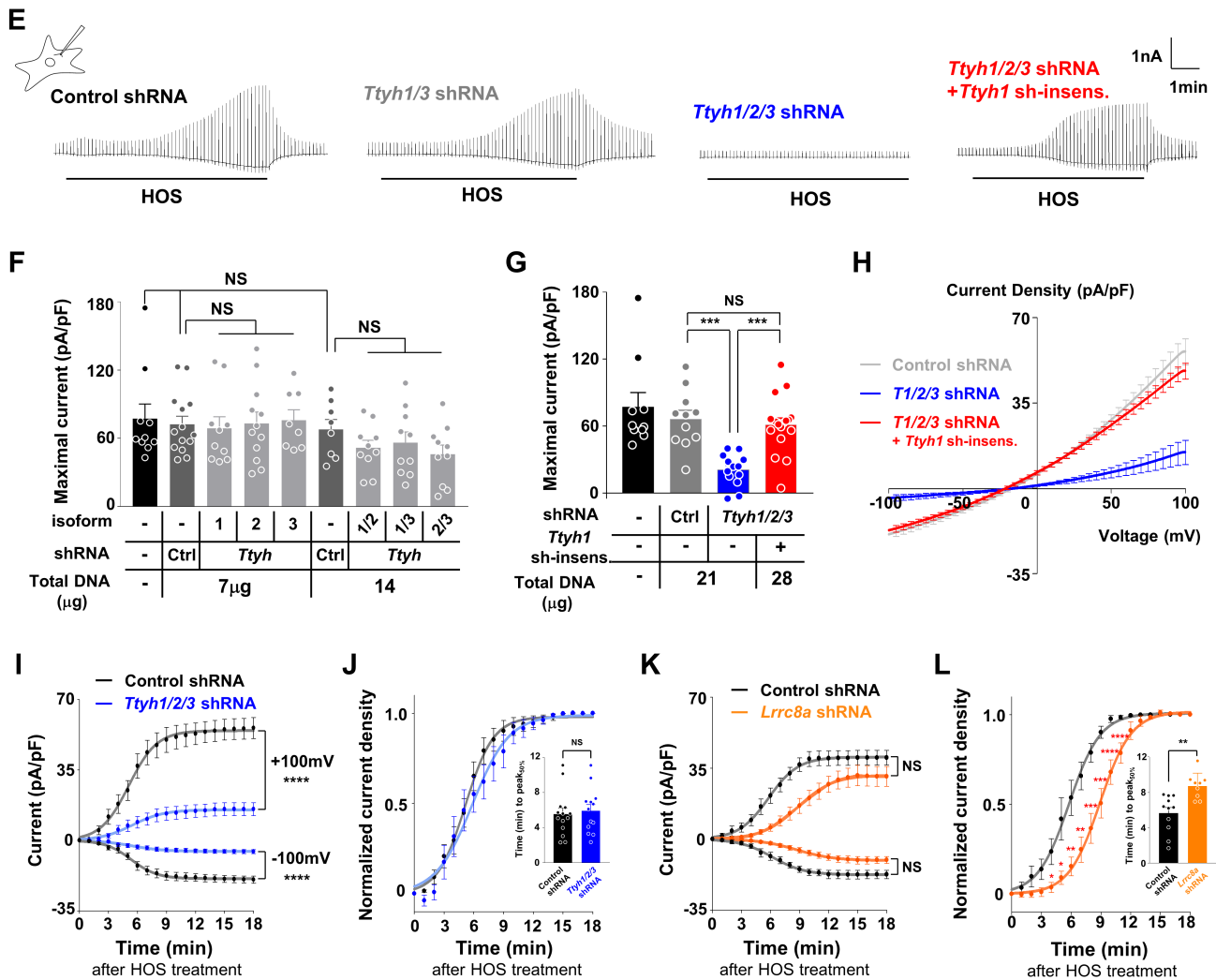


Fig. 2. Continued.

profoundly different from TTYH-mediated VRAC_{swell} in its external-cation-dependence and that the astrocytic VRAC_{swell} is distinct from LRRC8A. This conclusion was further strengthened by the observations that TTYH-mediated VRAC_{swell} and LRRC8A-mediated VRAC_r showed profoundly different voltage-dependent inactivation (Fig. 4A and 4B) and relative permeability to various anions (Fig. 4D), although there was no difference in rectification index (Fig. 4C).

TTYH1/2/3 share the same biophysical, biochemical and pharmacological properties as astrocytic VRAC_{swell}

The astrocytic I_{Cl,swell} was reported to display an outwardly rectifying conductance [6] with a calculated rectification index to be less than one. The rectification index of each TTYH1/2/3-mediated I_{Cl,swell} was also identical to that of I_{Cl,swell} recorded from cultured astrocytes with a strong outward rectification (Fig. 4E). Crepel et

al. also showed that the Ca²⁺ is not essential for the activation of astrocytic VRAC_{swell} [6]. We observed that each of the TTYH1/2/3-mediated I_{Cl,swell} is also independent of Ca²⁺ as evidenced by the similar amplitude of I_{Cl,swell} in low external Ca²⁺ (0.15mM) and high internal Ca²⁺-chelator BAPTA (20mM) (Fig. 4F~H). We next examined the pharmacological profiles of astrocytic VRAC_{swell} compared to TTYH1/2/3-mediated I_{Cl,swell} in HEK293T cells. DCPIB is a known inhibitor for both VRAC_{swell} and VRAC_r recorded from various cell lines including cultured astrocytes [50, 51]. We found that DCPIB rapidly blocked I_{Cl,swell} in cultured astrocytes (Fig. 4I~K) and TTYH1/2/3-mediated I_{Cl,swell} in HEK293T cells (Fig. 4L and 4M). Taken together, these results indicate that TTYH1/2/3 share the same biophysical (outward rectification), biochemical (Ca²⁺-independency) and pharmacological (sensitivity to DCPIB) properties as the astrocytic VRAC_{swell}.

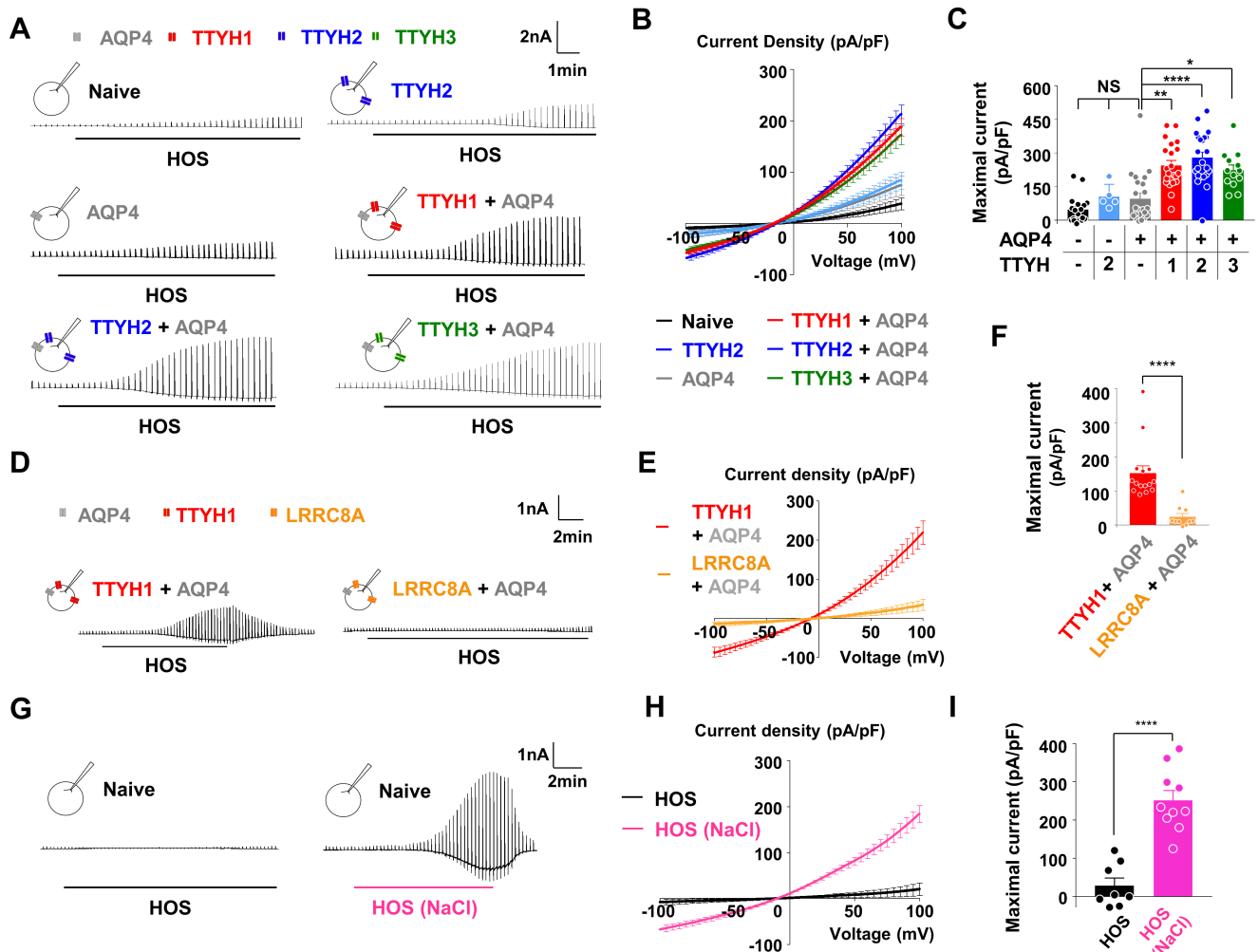


Fig. 3. Each TTYH1/2/3 isoform is sufficient for VRAC_{swell} activity. (A) Representative I_{Cl,swell} from Naive, TTYH2 only, AQP4 only or TTYH1, TTYH2 and TTYH3 with AQP4 co-expressing HEK293T cells. Inset: schematic diagram of whole-cell patch-clamp recording in AQP4 (grey), TTYH1 (red), TTYH2 (blue), TTYH3 (green) expressing HEK293T cells. (B) Averaged I-V curves for I_{Cl,swell} in Naive (black), TTYH2 only (skyblue), AQP4 only (grey), and TTYH1 (red), TTYH2 (blue), TTYH3 (green) with AQP4 co-expressing HEK293T cells. (C) Summary bar graph showing the maximal amplitude of I_{Cl,swell} from +100 mV to -100 mV. Data are represented as mean±SEM (n=18 for Naive HEK293T cells, n=5 for TTYH2 over-expressing HEK293T cells, n=22 for AQP4 over-expressing HEK293T cells, n=21, 23 and 13 for TTYH1, TTYH2 and TTYH3 with AQP4 co-expressing HEK293T cells; **p*<0.05, ***p*<0.01, *****p*<0.0001 and NS>0.05, Kruskal-Wallis test). (D-F) Representative traces, averaged I~V curves and summary bar graphs of maximal I_{Cl,swell} currents from either TTYH1 or LRRC8A with AQP4 co-expressed CHO-K1 cells (n=15 for TTYH1+AQP4, n=10 for LRRC8A+AQP4; *****p*<0.0001, Mann-Whitney test). (G) Representative traces of I_{Cl,swell} recording from naive HEK293T cells during HOS (black bar) and NaCl-containing HOS (HOS(NaCl)) treatment, respectively (pink bar). (H) Averaged I~V curves for maximal I_{Cl,swell} recorded from naive HEK293T cells in response to HOS (black) and HOS(NaCl) (pink). (I) Summary bar graph showing the maximal amplitude for I_{Cl,swell} from +100 mV to -100 mV recorded from naive HEK293T cells in response to HOS (black) and HOS(NaCl) (pink). Data are represented as mean±SEM (n=8 and 10 for HOS or HOS(NaCl); *****p*<0.0001, unpaired t-test). (J-L) Representative traces, averaged I~V curves, and summary bar graph of I_{Cl,swell} recorded from control shRNA (black), m/h *Lrrc8a* shRNA (orange)-expressing and TTYH1 (red), AQP4 (grey) with m/h *Lrrc8a* shRNA (orange)-expressing HEK293T cells in response to HOS(NaCl) (pink). Data are represented as mean±SEM (n=10, 11, and 11 for Control shRNA, m/h *Lrrc8a* shRNA, and TTYH1+AQP4 with m/h *Lrrc8a*; ****p*<0.001, one-way ANOVA). (M-O) Representative traces, averaged I~V curves and summary bar graphs of maximal I_{Cl,swell} currents from control shRNA or m/h *Lrrc8a* shRNA expressing condition in cultured astrocytes (n=9 for control shRNA, n=9 for m/h *Lrrc8a* shRNA; NS: *p*>0.05, unpaired t-test). (P-R) Representative traces, averaged I~V curves and summary bar graphs of maximal I_{Cl,swell} currents from control shRNA expressing condition (n=10) or m/h *Lrrc8a* shRNA expressing condition (n=13) in HEK293T cells with expression of TTYH1+AQP4. Statistical analysis was performed with (NS: *p*>0.05, Mann-Whitney test) Data are represented as mean±SEM for all averaged I~V curves and summary bar graphs.

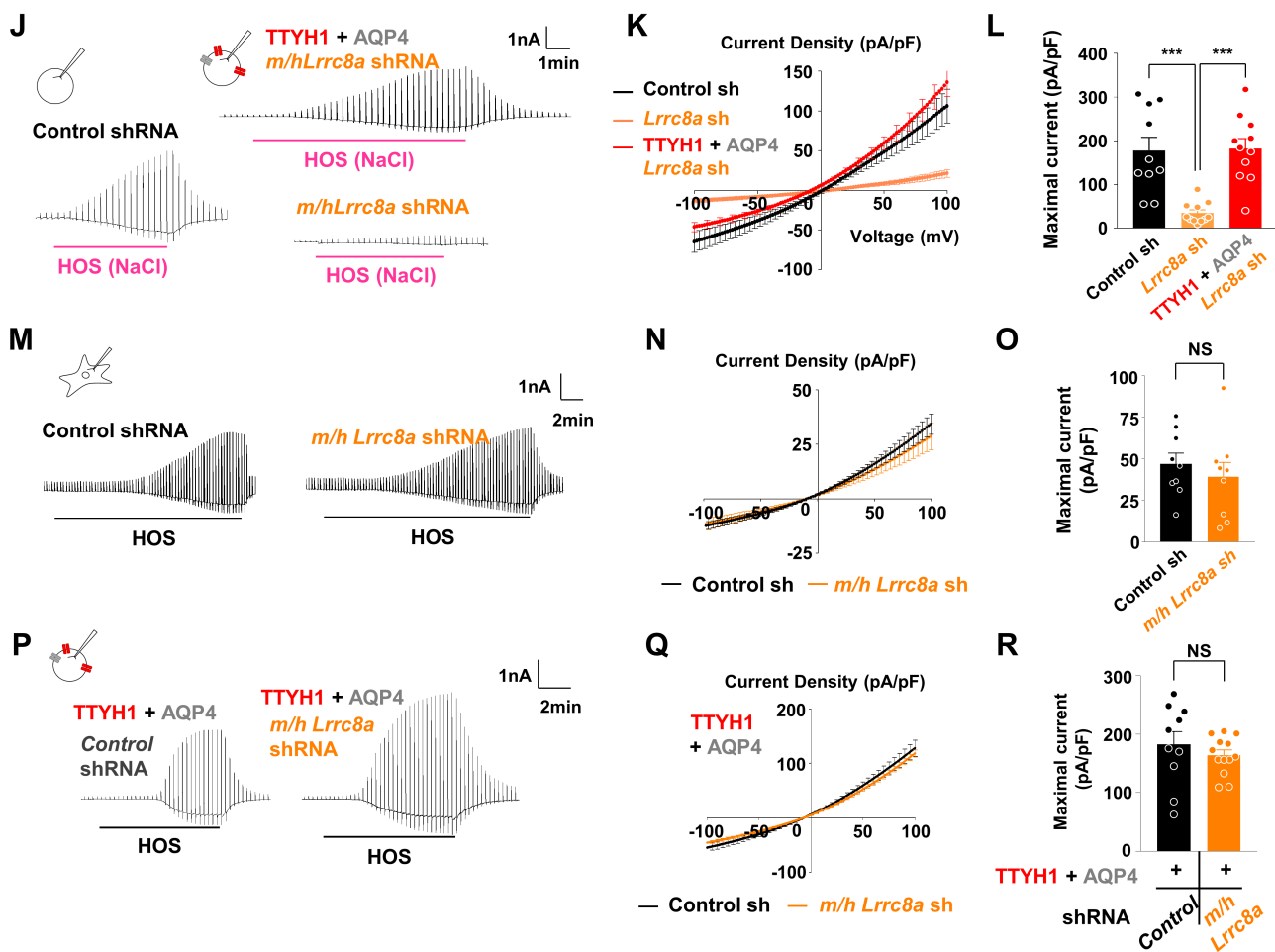


Fig. 3. Continued.

TTYH1/2/3 share the same kinase-dependency and glutamate-permeability as astrocytic VRAC_{swell}

As previously reported, tyrosine kinase (TK) and mitogen-activated protein kinase (MAPK) are essential for activation of the astrocytic VRAC_{swell} [6]. We also confirmed that pre-treatment of TK inhibitor genistein (Fig. 5A~C) and MAPK inhibitor PD98059 (Fig. 5E~G) completely abolished I_{Cl,swell} in cultured astrocytes. Each of the TTYH1/2/3-mediated I_{Cl,swell} was similarly blocked by pre-treated genistein (Fig. 5A and 5D) or PD98059 (Fig. 5H~J). In fact, the surface expression of TTYH1 was enhanced by HOS treatment, which was prevented by either TK or MAPK inhibitor (Fig. 5K). These results indicate that each TTYH isoform shares the identical kinase-dependency as the astrocytic VRAC_{swell}. In contrast, LRRC8A-mediated VRAC_r showed a profoundly different sensitivity to MAPK inhibitor (Fig. 5L~N).

Another unique property of the astrocytic VRAC_{swell} is its relatively high P_{Glu}/P_{Cl} [8, 32, 52]. To measure the P_{Glu}/P_{Cl} of I_{Cl,swell}, we exchanged the external solution from HOS (83 mM Cl⁻) to

glutamate-containing HOS (gHOS: 70 mM glutamate and 13 mM Cl⁻) after reaching a maximal current amplitude of I_{Cl,swell} (Fig. 5O). We found that in both cultured astrocyte (Fig. 5P and 5Q) and each TTYH1/2/3-expressing HEK293T cells (Fig. 5R), the reversal potential of I_{Cl,swell} shifted to a positive potential in gHOS treatment. Based on the reversal potential shift, we calculated the P_{Glu}/P_{Cl} according to Goldman-Hodgkin-Katz equation and found that I_{Cl,swell} in cultured astrocytes and each TTYH1/2/3-mediated I_{Cl,swell} shared the similar high P_{Glu}/P_{Cl} at around 0.26 (Fig. 5S). Taken together, these results indicate that kinase-dependency and glutamate-permeability of each TTYH-mediated I_{Cl,swell} resemble those of the astrocytic VRAC_{swell}.

Arginine residue at 165 in TTYH1 and 164 in TTYH2 is the pore-forming amino acid as evidenced by mutagenesis-based structure-activity analysis

If TTYH isoforms are the true channel-forming subunit of VRAC_{swell}, we should be able to determine the channel-pore as

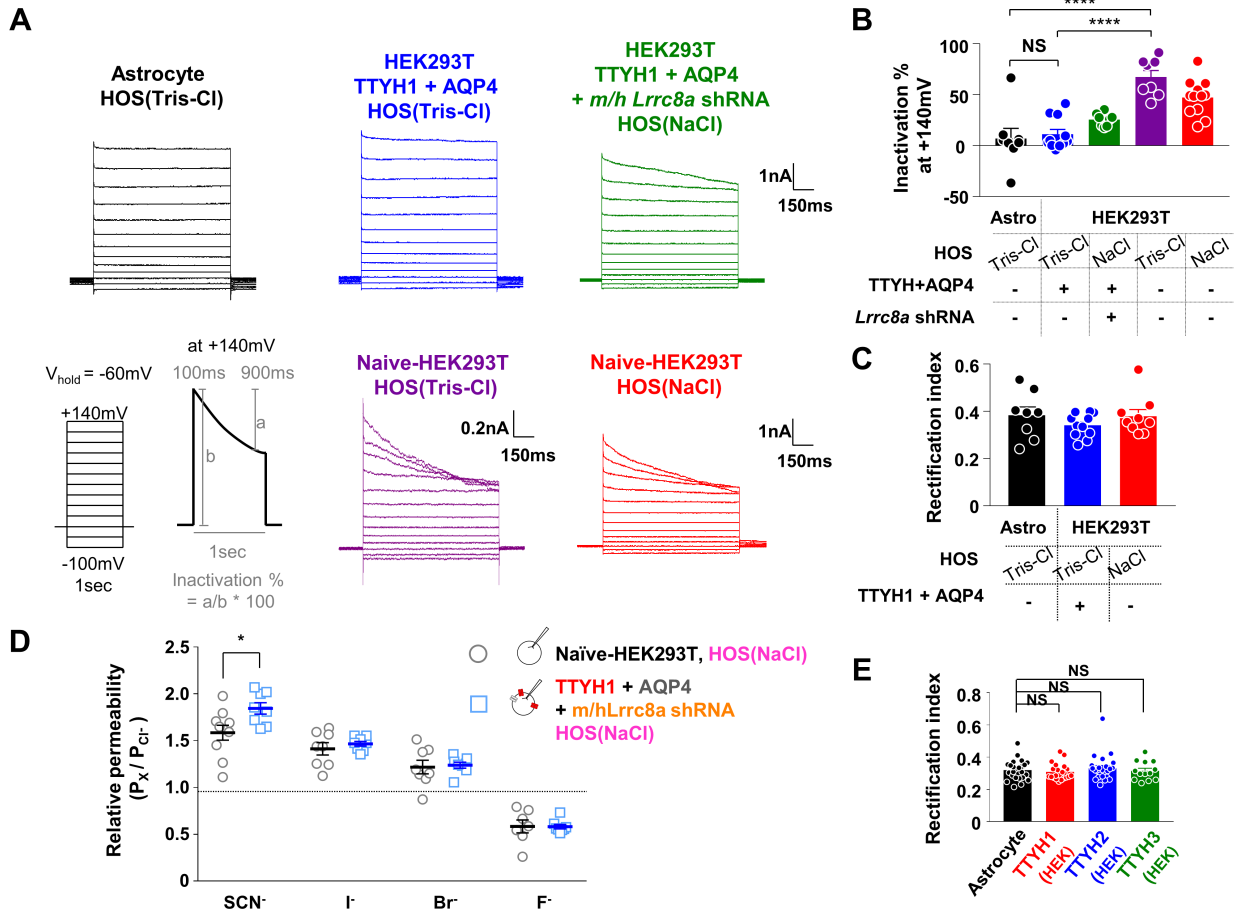


Fig. 4. Each TTYH1/2/3 isoform shares the same biophysical (voltage-dependent inactivation, outward rectification), biochemical (Ca²⁺-independency) and pharmacological properties (sensitivity to DCPIB) as astrocytic VRAC_{swell}. (A) Representative current traces with voltage step protocol from -100 mV to +140 mV, which is recorded in cultured astrocytes (black), TTYH1+AQP4 (blue), TTYH1+AQP4 with *m/h Lrrc8a* shRNA (green) expressing HEK293T cells, and naïve HEK293T cells (purple and red). The major constituent of HOS is indicated in each traces, (HOS(Tris-Cl) or HOS(NaCl)). Bottom left, the schematic diagram of voltage step protocol and calculation of inactivation % (Inactivation % is calculated by a/b*100, the 'a' indicates the initial 10% of current amplitude at +140 mV, and the 'b' indicates the last 90% of current amplitude at +140 mV). (B) Summary bar graph showing inactivation % at +140 mV. Data are represented as mean±SEM (n=8 for astrocytes by treating HOS(Tris-Cl), n=11 for TTYH1+AQP4 expressing HEK293T by treating HOS(Tris-Cl), n=9 for TTYH1+AQP4 with *m/h Lrrc8a* shRNA by treating HOS(NaCl), n=8 for naïve HEK293T cells by treating HOS(Tris-Cl), and n=14 for naïve HEK293T cells by treating HOS(NaCl), ****<0.0001, one-way ANOVA). (C) Summary bar graph showing rectification index from cultured astrocyte and naïve HEK293T by treating HOS(Tris-Cl) (black and blue) and from naïve HEK293T cells by treating HOS(NaCl) (red). (n=8 for astrocyte by treating HOS(Tris-Cl), n=11 for TTYH1+AQP4 expressing HEK293T cells by treating HOS(Tris-Cl), n=9 for naïve HEK293T cells by treating HOS(NaCl), ns>0.05, one-way ANOVA). (D) Summary scatter plot showing the relative permeability of various anions such as SCN⁻, I⁻, Br⁻, and F⁻ recorded from naïve HEK293T cells by treating Na⁺ containing HOS (grey circle) and recorded from TTYH1+AQP4 with *m/h Lrrc8a* shRNA expressing HEK293T cells by treating Na⁺ containing HOS (skyblue square). (n=9, 8, 8, and 7 for naïve HEK293T cells for SCN⁻, I⁻, Br⁻, and F⁻, respectively, and n=8, 8, 8, and 8 for TTYH1+AQP4 with *m/h Lrrc8a* shRNA expressing HEK293T cells for SCN⁻, I⁻, Br⁻, and F⁻, respectively). (E) Summary bar graph showing rectification index ($|I_{Cl,swell}$ at -100 mV|/|I_{Cl,swell} at +100 mV) from whole-cell patch-clamp recording of cultured astrocyte and TTYH1/2/3 with AQP4 co-expressing HEK293T cells. Data are represented as mean±SEM (n=24 for astrocytes and n=21, 23 and 13 for TTYH1, TTYH2 and TTYH3 with AQP4 co-expressing HEK293T cells; NS>0.05, Kruskal-Wallis test). (F) Representative I_{Cl,swell} from TTYH1, 2 and 3 with AQP4 overexpressing CHO-K1 cells using 0.15 mM external Ca²⁺ and 20 mM BAPTA containing internal solution. Inset: schematic diagram of whole-cell patch-clamp recordings in TTYH1 (red), TTYH2 (blue) and TTYH3 (green) with AQP4 (grey) co-expressing CHO-K1 cells. (G) Averaged I-V curves for I_{Cl,swell} recorded at TTYH1 (red), TTYH2 (blue) and TTYH3 (green) with AQP4 (grey) co-expressing CHO-K1 cells. (H) Summary bar graph showing the maximal amplitude of I_{Cl,swell} from -100mV to 100mV. Data are represented as mean±SEM (n=10, 8 and 10 for TTYH1, TTYH2 and TTYH3 with AQP4 co-expressing CHO-K1 cells; NS>0.05, Kruskal-Wallis test). (I, L) Representative traces of I_{Cl,swell} recording from cultured astrocytes and TTYH1/2/3 with AQP4 co-expressing HEK293T cells during treatment HOS (black bar) and DCPIB (10 μM, sky blue bar). (J) Averaged I-V curves for I_{Cl,swell} from cultured astrocytes in control (black) and DCPIB (sky blue). (K, M) Summary bar graph showing the maximal amplitude for I_{Cl,swell} from +100 mV to -100 mV in cultured astrocytes and TTYH1/2/3 with AQP4 co-expressing HEK293T cells, respectively. Data are represented as mean±SEM (n=10 and 8 for control or DCPIB treatment in astrocytes; ****<0.0001, Mann-Whitney test; n=8, 15 and 8 for control or DCPIB treatment in each TTYH1, TTYH2 and TTYH3 with AQP4 co-expressing HEK293T cells; ****<0.0001, 2way ANOVA).

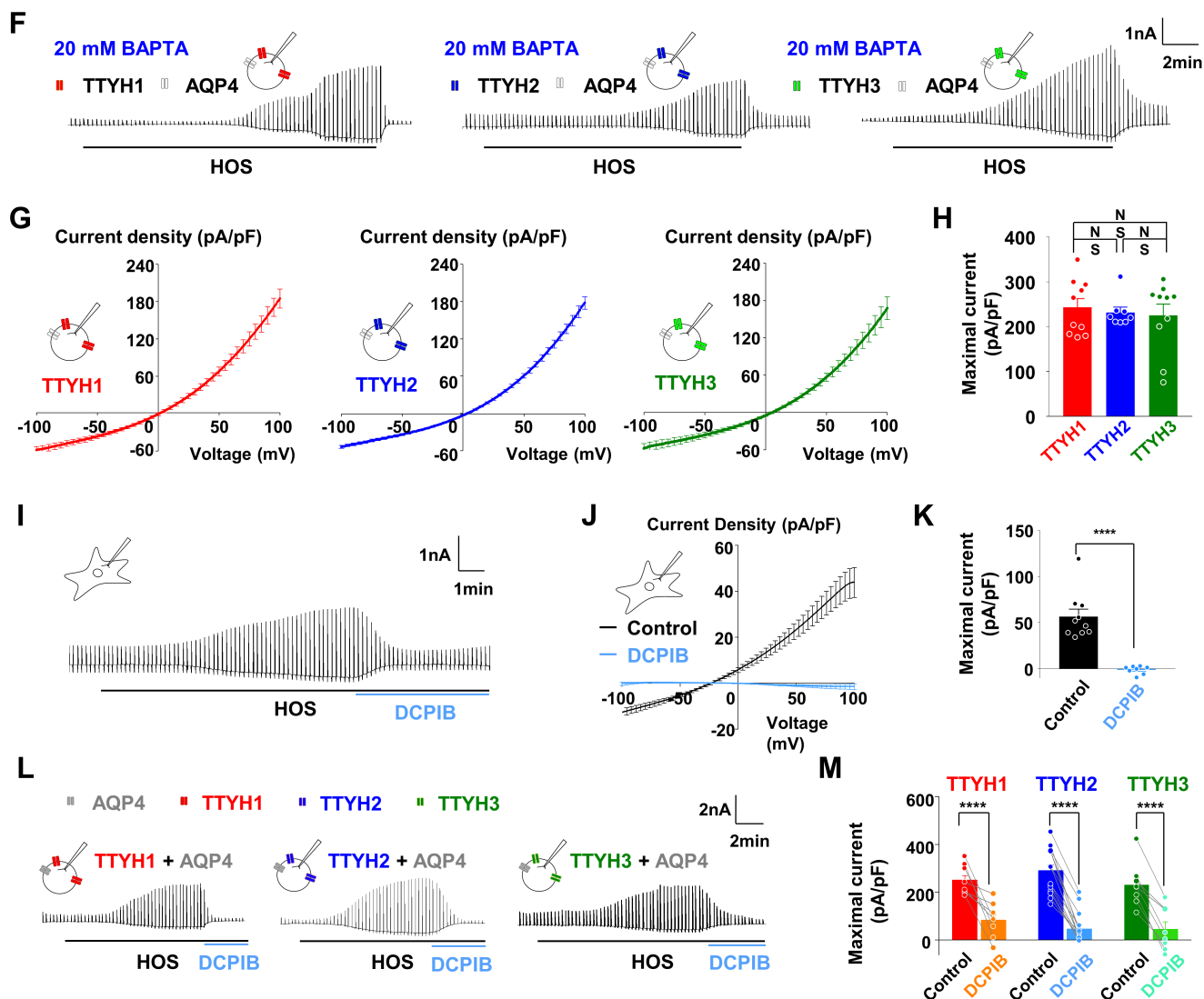


Fig. 4. Continued.

a single amino acid residue. To identify the exact pore-forming amino acid residue, we first utilized bioinformatical approaches to predict the membrane topology of TTYH isoforms. Based on the dendrogram analysis (Fig. 6A) and sequence alignment (Fig. 7) of TTYH1/2/3 isoforms across different species, we found that TTYH1, which is the most abundantly expressed isoform in astrocytes (Fig. 1D), showed the order of sequence homology: TTYH1>TTYH2>TTYH3 >> *Drosophila* Tweety homologs. The hydrophobicity-based sequence analysis predicted a membrane topology with four highly-conserved trans-membrane domains (TM) and additional intra-membrane domain (IM) in TTYH1 or TM domain in TTYH2 and TTYH3 near the C-terminus (Fig. 6B). To validate the predicted topology, we over-expressed the chimeric clone of TTYH1-GFP (GFP attached to the C-terminus of

TTYH1) in HEK293T cells. We performed immunocytochemistry with either the antibody recognizing the N-terminus of TTYH1 (Ab_{N-term}) or the GFP-antibody (Ab_{GFP}) which should bind to the C-terminus of TTYH1-GFP (Fig. 8A). The intracellular or extracellular topology of each terminus was determined by the presence of the membrane detergent Triton X-100, which allowed the access of antibodies to the cytosolic compartment. We found that both Ab_{N-term} and Ab_{GFP} showed positive immunoreactivity only when Triton X-100 was present (Fig. 8A). These results indicate that contrary to the previous suggestion [53], TTYH1 has four TM domains and one IM domain with cytosolic N- and C-termini (Fig. 8C). In support of this topology, we found that the location of Loop1 between TM1 and TM2 (Fig. 8C) is in the extracellular region (Fig. 8B).

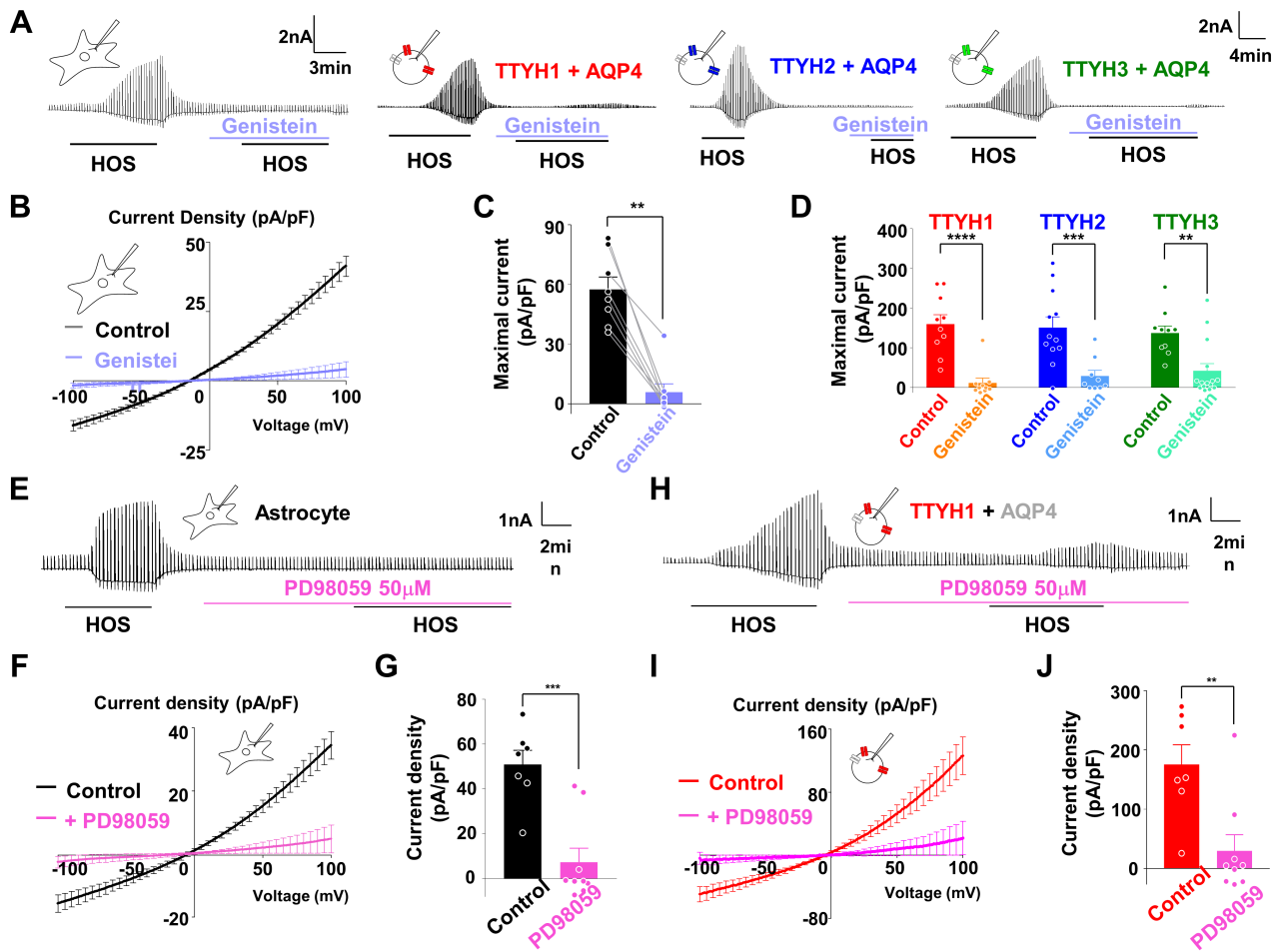


Fig. 5. Each TTYH1/2/3 shares the same pharmacological properties (sensitive to both genistein and PD98059) as astrocytic VRAC_{swell}. (A) Representative traces of $I_{Cl,swell}$ recording from cultured astrocytes and TTYH1/2/3 with AQP4 co-expressing HEK293T cells during treatment HOS (black bar) in the presence or absence of Genistein (50 μ M, sky blue bar). Right upper insets represent cultured astrocytes and TTYH1/2/3 (red, blue and green, respectively) with AQP4 (grey) over-expressing HEK293T cells. (B) Averaged I-V curves for $I_{Cl,swell}$ in control (grey) and genistein-treated group (sky blue) recorded from cultured astrocytes. (C, D) Summary bar graph showing the maximal amplitude of $I_{Cl,swell}$ from +100 mV to -100 mV recorded from cultured astrocytes and TTYH1/2/3 with AQP4 co-expressing HEK293T cells, respectively. Data are represented as mean \pm SEM (n=8 for both control and genistein treatment in astrocytes; **<0.01, Wilcoxon test; n=10 for both control and genistein treatment in TTYH1 with AQP4 co-expressing HEK293T cells, n=12 and 9 for control and genistein treatment in TTYH2 with AQP4 co-expressing HEK293T cells; **<0.01, ***<0.001, ****<0.0001, 2way ANOVA). (E) Representative traces of $I_{Cl,swell}$ from cultured astrocytes during treatment hypo-osmotic solution (black bar) and then PD98059 (50 μ M, pink bar). Inset: schematic diagram of whole-cell patch-clamp recording in primary cultured astrocyte. (F) Averaged I-V curves for HOS induced current responses in control (black) and PD98059 (pink) recorded at cultured astrocytes. (G) Summary bar graph showing the maximal amplitude of HOS induced current density from -100mV to 100mV. Data are represented as mean \pm SEM (n=7 and 9 for control and PD98059; ***p<0.001; Mann-Whitney test). (H) Representative traces of $I_{Cl,swell}$ from TTYH1 with AQP4 co-expressing CHO cells during treatment HOS and then PD98059 (50 μ M). Inset: schematic diagram of whole-cell patch-clamp recording in TTYH1 (red) with AQP4 (grey) co-expressing CHO cells. (I) Averaged I-V curves for HOS induced current responses in control (red) and PD98059 (pink) recorded at TTYH1 with AQP4-co-expressing CHO cells. (J) Summary bar graph showing the maximal amplitude of $I_{Cl,swell}$ from -100mV to 100mV. Data are represented as mean \pm SEM (n=7 and 9 for control and PD98059; **p<0.01; Mann-Whitney test). (K) Surface expression of TTYH1 in response to HOS(Tris-Cl) in cultured astrocytes, which were prevented by either TK and MAPK inhibitor. (L, M) Representative traces and summary bar graph of $I_{Cl,swell}$ recording from naïve HEK293T in the absence of drug (black bar) or in the presence of genistein (TK inhibitor, light purple) or PD98059 (MAPK inhibitor, green) induced by HOS(NaCl, Pink line). For G, n=10, 4, 7 for in the absence or presence of drug, genistein or PD98059 in HEK293T cells, **<0.01, one-way ANOVA). (N) Summary bar graph showing block % of kinase inhibitor in cultured astrocytes (black, induced by HOS(Tris-Cl)), TTYH1+AQP4 overexpressed HEK293T cells (red, induced by HOS(Tris-Cl)), and naïve HEK293T cells (pink, induced by HOS(NaCl)). (n= 8, 10, and 4 for recorded from astrocyte, TTYH+AQP4 overexpressed, and naïve HEK293T cells after genistein treatment, and n= 9, 9, and 6 for recorded from astrocyte, TTYH+AQP4 overexpressed HEK293T cells, and naïve HEK293T cells after PD98059 treatment, **<0.01, Two-way ANOVA).

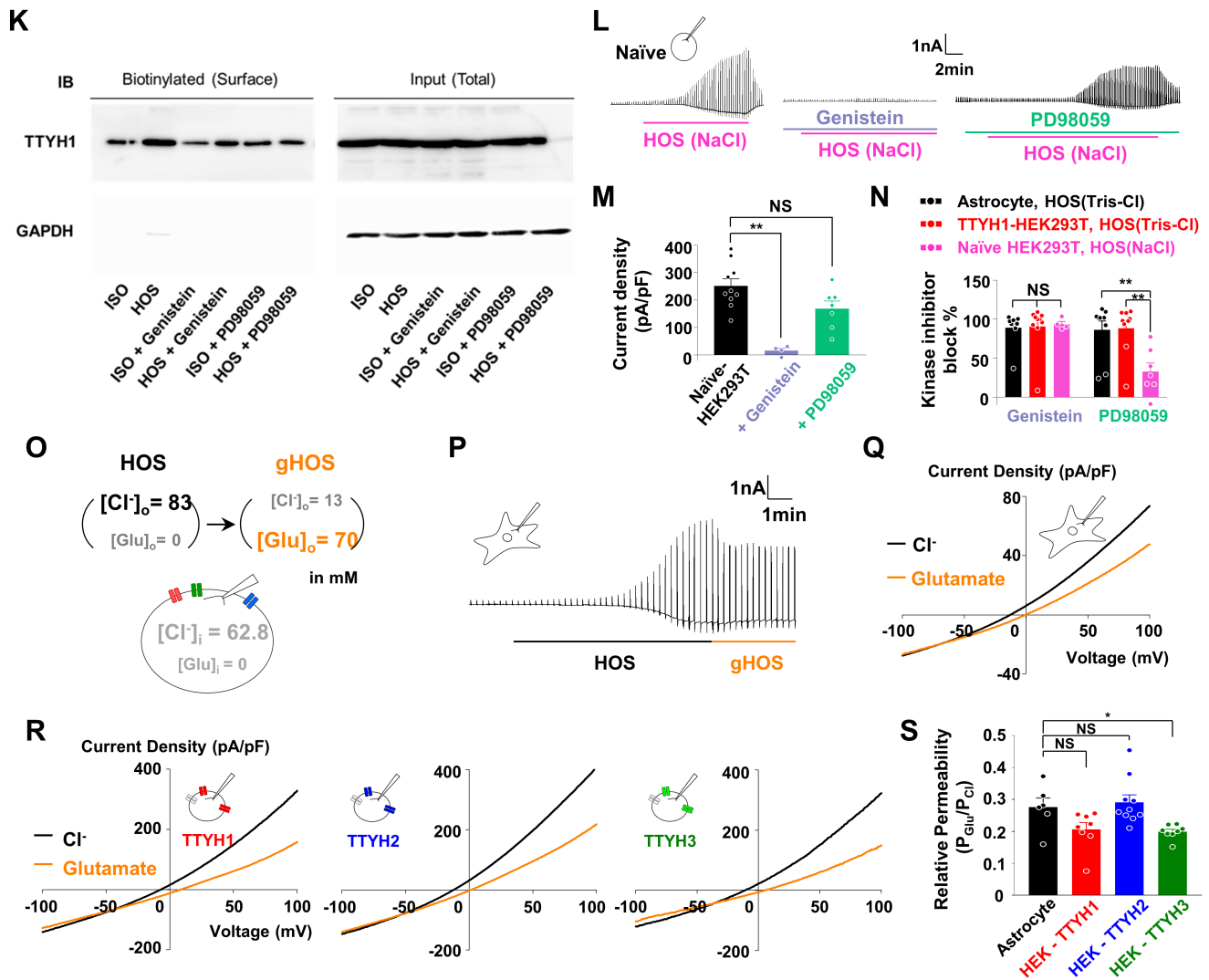


Fig. 5. Continued. (O) Schematic diagram for experimental conditions to record glutamate permeability of $I_{Cl,swell}$. HOS (black) is standard 83mM Cl⁻ containing the hypo-osmotic solution. gHOS (orange) is 70mM glutamate and 13mM Cl⁻ containing the hypo-osmotic solution. (P) Representative trace for glutamate permeability recording in cultured astrocytes. gHOS (orange) was treated at the peak of $I_{Cl,swell}$ induced by standard HOS (black). (Q) Representative I~V curves for $I_{Cl,swell}$ were recorded under whole-cell patch-clamp in cultured astrocytes firstly in HOS (83 mM Cl⁻, black) and switched to gHOS (70 mM glutamate and 13 mM Cl⁻, orange) in the same cell. (R) Representative I~V curve for $I_{Cl,swell}$ in AQP4 (grey), TTYH1 (red), TTYH2 (blue), TTYH3 (green) with AQP4 co-expressing HEK293T cells, with standard HOS (black) changed to gHOS (orange) in the same cell. (S) Glutamate permeability ratio relative to Cl⁻ (P_{Glu}/P_{Cl}) of $I_{Cl,swell}$ are summarized. P_{Glu}/P_{Cl} was calculated from the Goldman-Hodgkin-Katz equation (see in methods). Data are represented as mean±SEM (n=6 for astrocytes and n=8, 10 and 8 for TTYH1, TTYH2 and TTYH3 with AQP4 co-expressing HEK293T cells; NS>0.05, *<0.05, Kruskal-Wallis test).

Because channel-pores usually reside within a loop between two transmembrane domains, we next closely examined the loop-sequences of Loop1-4 of TTYH1 (Fig. 8C) and found that Loop2 and Loop4 were highly conserved across different species but not Loop1 (Fig. 7). Loop3 appeared to be too short for a pore. Therefore, we focused on Loop2 and Loop4 to search for the channel-pore. We generated a series of truncation mutants (Δ) with a 20 amino-acid-deletion for each loop2 and 4 and also recorded $I_{Cl,swell}$. We identified potential candidates, Δ 2A (S116-T135) and Δ 2C

(T156-A175) in Loop2 and Δ 4B (L289-N304) in Loop4, which all showed an elimination of $I_{Cl,swell}$ (Fig. 8D). Then, we performed surface biotinylation assay for each candidate to eliminate the possibility that the disappearance of $I_{Cl,swell}$ is due to an impaired surface expression of the channel protein. We eliminated Δ 4B in Loop4 and Δ YY (Δ Y299, Y300) in Loop4B as a potential pore because of the lack of surface expression of Δ 4B and Δ YY (Fig. 8E). We made additional truncation mutants with Δ 2A and Δ 2C into 5-amino-acid-deletions and narrowed down to Δ 2A4, Δ 2C2, and Δ 2C3,

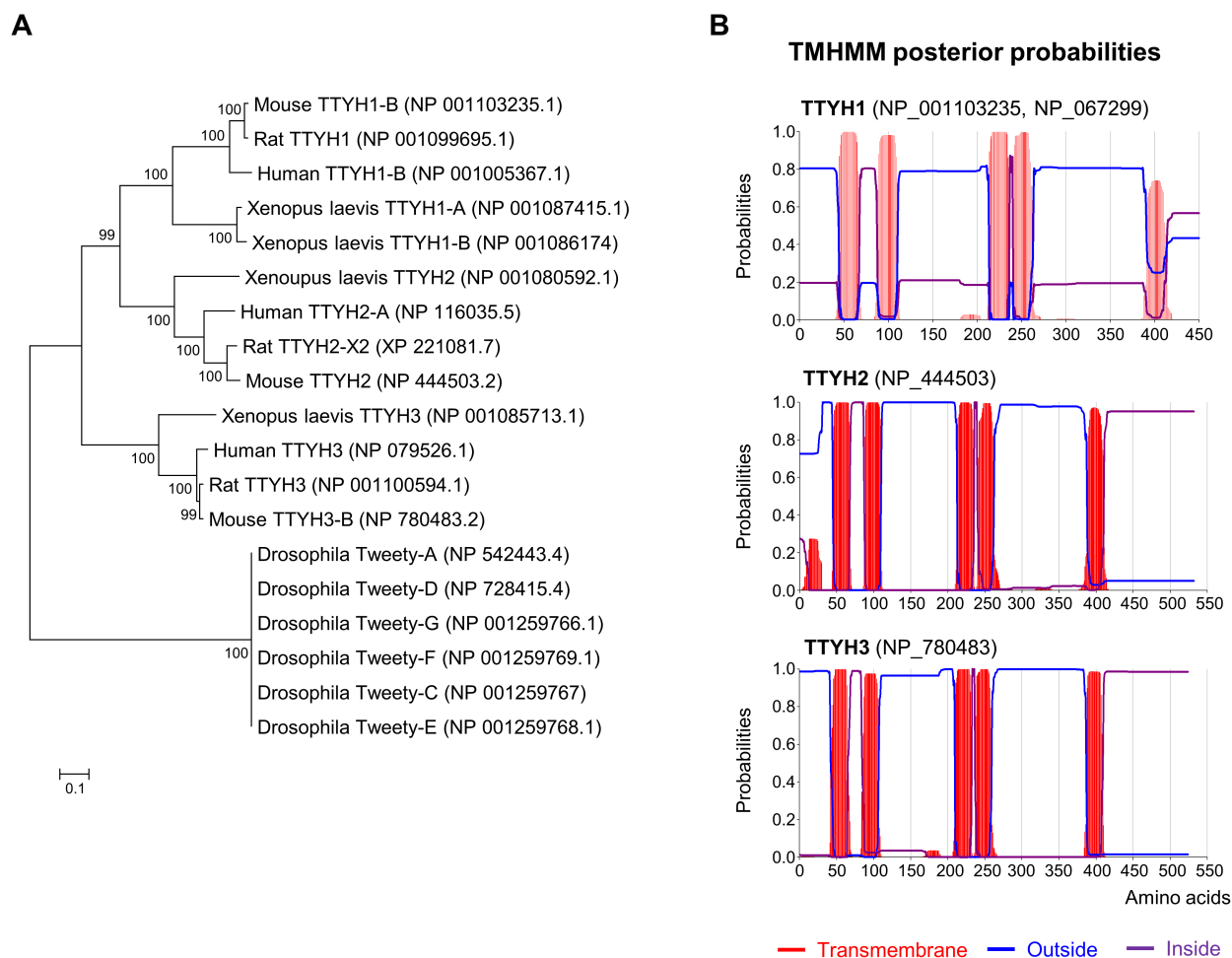


Fig. 6. Dendrogram with various species of TTYH family and the prediction of trans-membrane (TM) domains in TTYH1, 2 and 3 based on hydrophobicity with TMHMM software. (A) Phylogenetic tree indicates the genetic relationship of various species of TTYH family such as *mouse*, *rat*, *human*, *xenopus laevis* and *drosophila* TTYH family. The tree was constructed using maximum likelihood method with the bootstrap values at 1000 replicates by MEGA5. The evolutionary distances were computed using the Poisson correction method and are in the units of the number of amino acid substitutions per site. (B) Prediction results of hydrophobic trans-membrane (TM) domain (red) and hydrophilic-intracellular (purple) and extracellular (blue) part of TTYH1, 2 and 3.

which showed significantly reduced $I_{Cl,swell}$ (Fig. 8D). After examining the surface biotinylation results (Fig. 8E), we found that the positively charged arginine residue at 165 position (R165) satisfied the definition of putative single amino acid pore residue, displaying a significant reduction of $I_{Cl,swell}$ (Fig. 8F and 8G) and a positive shift in the reversal potential of about +7 mV (Fig. 8G) without affecting the surface expression after substitution with alanine (R165A) (Fig. 8E). This result suggests that the TTYH1-R165A is less permeable to Cl⁻ compared to TTYH1-WT. The substitution at the homologous residue, R164A in TTYH2 similarly showed significantly reduced $I_{Cl,swell}$ (Fig. 8H and 8I) indicating that the arginine residue (R165 for TTYH1 and R164 for TTYH2) is the key pore-forming residue. We further found that R165A mutant of shRNA-insensitive TTYH1, when co-expressed with all *Ttyh1/2/3*

shRNA, failed to rescue the $I_{Cl,swell}$ in astrocytes (Fig. 8J and 8K), confirming that R165 is the putative pore residue. Taken together, R165 in TTYH1 and R164 in TTYH2 are the pore-forming amino acids located between TM2 and TM3.

Arginine residue at 165 in TTYH1 and 164 in TTYH2 is the pore-forming amino acid as evidenced by substituted cysteine accessibility methods (SCAM)

To determine whether R165 and neighboring residues in TTYH1 are located at the pore lining vestibule, we performed the SCAM with cysteine substituted mutants of each of 10 amino acids from V161 to A170 (Fig. 9A~D). The control TTYH1-WT mediated $I_{Cl,swell}$ was reduced by 9.01% with 100mM of MTSES which has no permeability through the plasma membrane, sug-

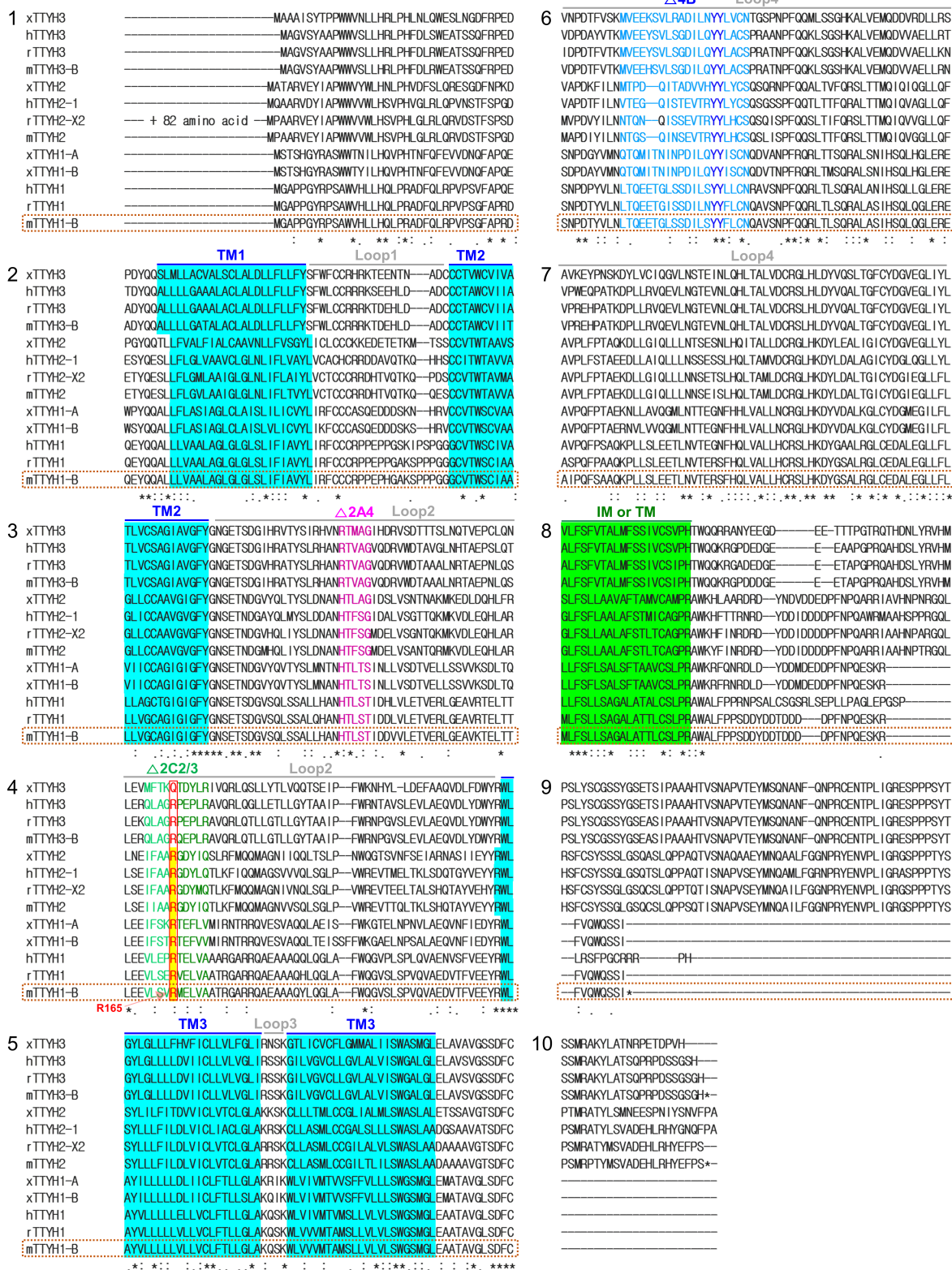


Fig. 7. Multiple amino acids alignment of for various species of TTYH family. Multiple amino acids alignment for various species of TTYH family represents 4 strong hydrophobic and conserved trans-membrane (TM) domain (sky blue), 1 weak hydrophobic and conserved intra-transmembrane (IM) domain or TM (yellowish green) across the species and isoforms of TTYH. Loop1-4 are located between TM domains. The possible candidates of the pore regions which are decided by the recording of $I_{Cl,swell}$ in Fig. 8D are Δ2A4 (pink letter), 2C2 (yellowish green letter), 2C3 (green letter) and 4B (sky blue letter). The 165 arginine residue (R165, red letter) is in between Δ2C2 and 3. mTTYH1-B is aligned with dark-red box.

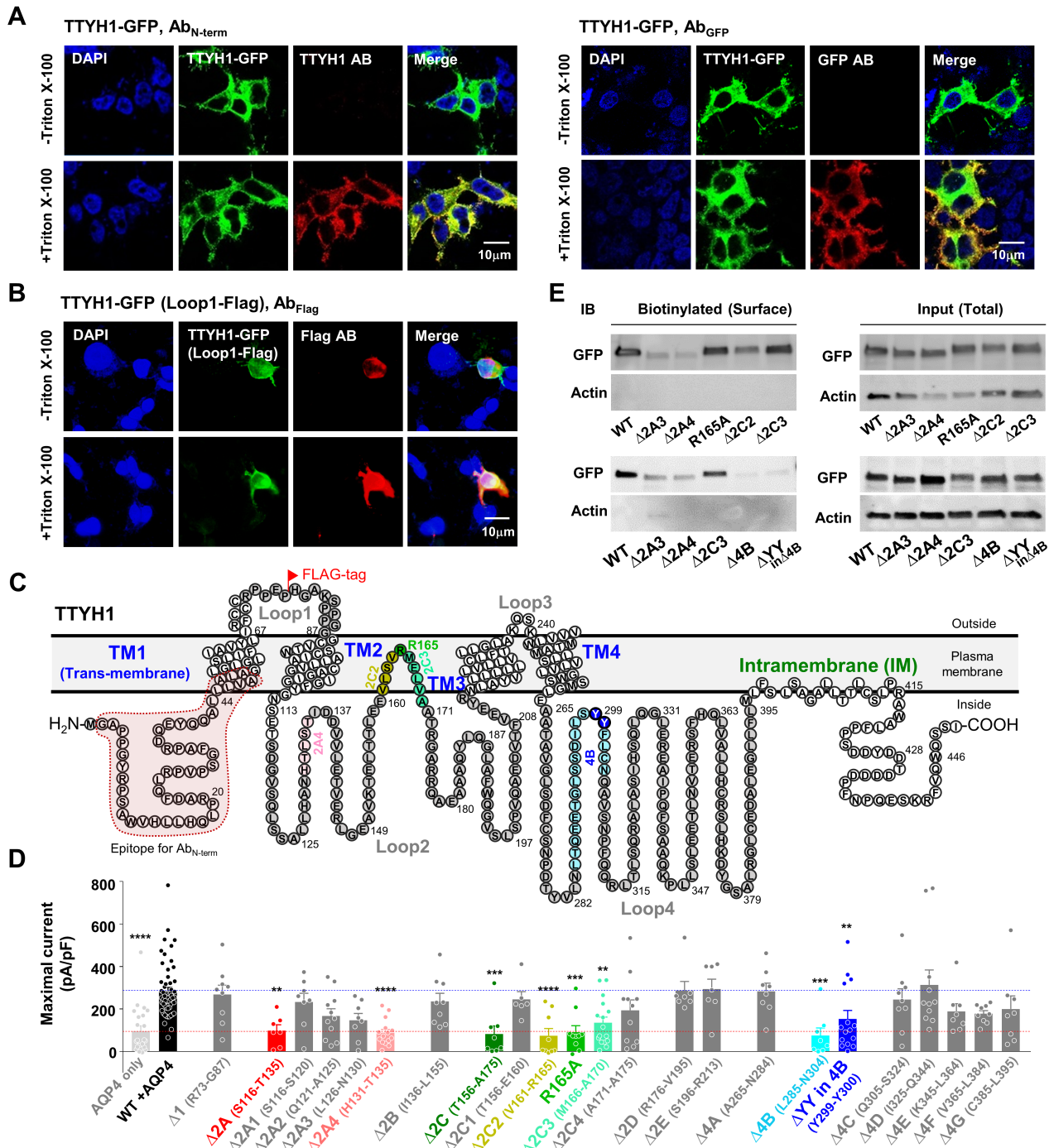


Fig. 8. R165 in TTYH1 is the pore-forming amino acid as evidenced by mutagenesis-based structure-activity analysis. (A, B) Non-permeabilized (-Triton X-100) and permeabilized (+Triton X-100) HEK293T cells expressing TTYH1-GFP were immunostained with N terminus of TTYH1 by anti-TTYH1 antibody, C terminus of TTYH1 by anti-GFP antibody and Loop1-FLAG-tagged-TTYH1 clone by anti-FLAG-tag antibody. (C) The prediction of membrane topology of TTYH1 based on permeabilization staining results and topology prediction software (TMHMM). Epitope for Ab_{N-term} antibody (red box), Δ2A4 (H131-T135, pink circle), Δ2C2 (V161-R165, yellow-green circle), Δ2C3 (M166-A170, green circle), Δ4B (L285-N304, sky blue), ΔYY (Y299-Y300, blue circle) and R165 (which was the pore of TTYH1) were also indicated. (D) Summary bar graph showing the maximal amplitude of $I_{Cl,swell}$ from +100 mV to -100 mV recorded with WT or several truncation mutants of TTYH1 co-expressing HEK293T cells. Data are represented as mean ± SEM (n=22 for AQP4 expressing HEK293T cells, n=57 for WT-TTYH1 with AQP4 co-expressing HEK293T cells, n=9 for loop1-TTYH1, n=7, 8, 11, 8 and 15 for related to loop2A-TTYH1, n=9 for loop2B-TTYH1, n=8, 6, 9, 10, 16, 11 for related to loop2C-TTYH1, n=7 for both loop2D and loop2E-TTYH1, n=8 for loop4A, n=8 and 15 for related to loop4B-TTYH1, and n=9, 11, 8, 9 and 8 for loop4C, D, E, F and G of TTYH1; ** < 0.01, *** < 0.001, **** < 0.0001, Kruskal-Wallis test).

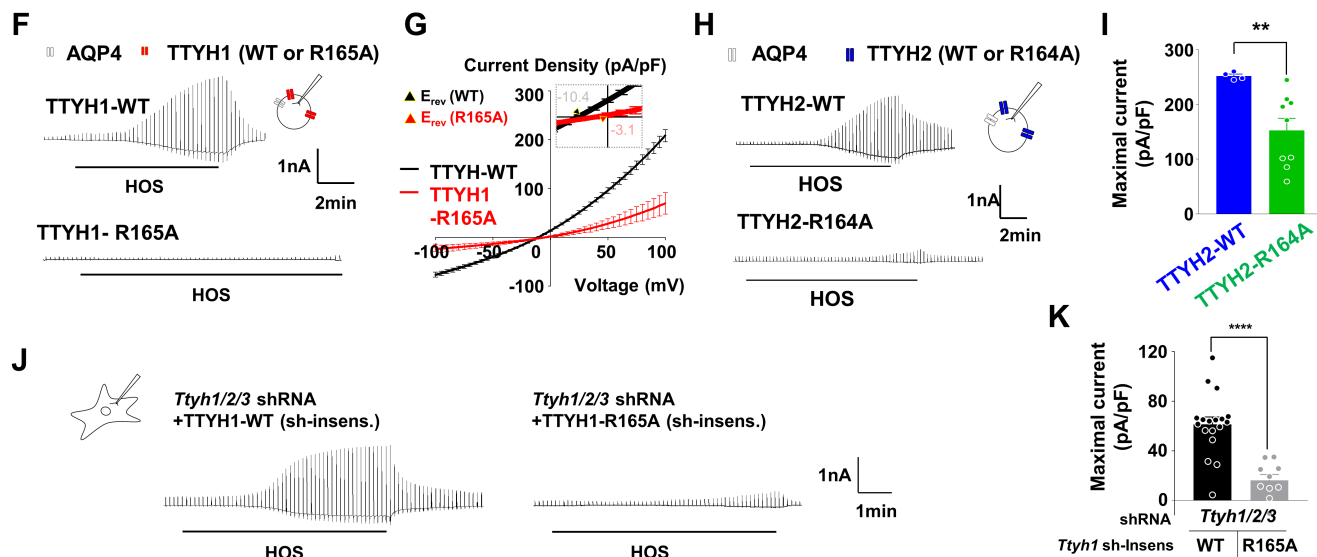


Fig. 8. Continued. (E) Surface expression of truncation mutants of TTYH1 that showed significant reduction of $I_{Cl,swell}$ by biotinylation assay. (F, G) Representative traces and averaged I-V curve for $I_{Cl,swell}$ from wild-type (WT) and R165A-TTYH1 with AQP4 co-expressing HEK293T cells. (H) Representative traces for $I_{Cl,swell}$ from TTYH2-R164A with AQP4 compared to TTYH2-WT with AQP4 overexpressing CHO cells. Inset: schematic diagram of whole-cell patch-clamp recording in R164A or WT-TTYH2 with AQP4 expressing CHO cells. (I) Summary bar graph showing the maximal amplitude of $I_{Cl,swell}$ from -100mV to 100mV. Data are represented as mean \pm SEM (n=4 and 9 for TTYH2-WT with AQP4 and TTYH2-R164A with AQP4 co-expressing HEK293T cells, **p<0.01; Mann-Whitney test). (J) Representative $I_{Cl,swell}$ recordings from *Ttyh1/2/3* shRNAs with shRNA-insensitive clone of TTYH1-WT and *Ttyh1/2/3* shRNAs with shRNA-insensitive clone of TTYH1-R165A-expressing cultured astrocytes. Inset: schematic diagram of whole-cell patch-clamp recording in primary cultured astrocyte. (K) Summary bar graph showing the maximal amplitude of $I_{Cl,swell}$ from +100 mV to -100 mV in the presence of the *Ttyh1/2/3* shRNAs with shRNA-insensitive clone of TTYH1-WT (*Ttyh1* sh-insens.) or with shRNA-insensitive clone of TTYH1-R165A -expressing cultured astrocytes. Data are represented as mean \pm SEM (n=18 and 10 for *Ttyh1/2/3* shRNAs with shRNA-insensitive form of WT-TTYH1 and R165A-TTYH1 expressing astrocytes, respectively; ****<0.0001, unpaired t-test).

gesting that there is a basal level sensitivity of TTYH1 for 100mM of MTSES (Fig. 9A~C). Among 10 amino acids, R165C was most significantly blocked by 100mM of MTSES with the highest block percentage (36.58%) (Fig. 9A~C), suggesting that R165 is the *bona fide* pore-forming amino acid residue, but not an amino acid involved in channel gating. The V164C was also substantially blocked by 100mM of MTSES (28.85%, Fig. 9C). These results suggest that R165 might be located at the apex of the outer vestibule of the pore in TTYH1, whereas V164 might be partially buried in the outer vestibule (Fig. 9D). Finally, to investigate whether one R165 functions as one pore in a multi-subunit complex or a collection of multiple R165 functions as an assembly of one pore, we recorded $I_{Cl,swell}$ when the relative abundance of TTYH1-R165A and TTYH1-WT was varied in co-expression system (Fig. 9E). Intriguingly, the $I_{Cl,swell}$ was linearly reduced according to the relative abundance of TTYH1-R165A (Fig. 9E), which fitted well with a straight line ($R^2=0.942$, $p=0.006$) but not with a dominance model of tetramer or pentamer [54]. These results suggest that, instead of an assembly of several R165s to form one functional pore, each R165 in a multi-subunit complex of TTYH1 homomeric channel constitutes an individual functional conducting pore as a part of a

large conducting pore.

The $I_{Cl,swell}$ is mediated by TTYH family in ex-vivo hippocampal astrocytes

Due to the lack of molecular identity, the brain distribution and *in-vivo* function of VRAC_{swell} have remained unknown. Using the antibody against TTYH1, which is the most abundant isoform, we found that the protein expression pattern of TTYH1 was exclusively in GFAP-expressing astrocytes in the hippocampus and cortex (Fig. 10A). The astrocyte-specific expression and antibody specificity were verified by the use of adeno-associated-virus carrying *Ttyh1*-specific shRNA (Fig. 10B and 10C). Then, we recorded $I_{Cl,swell}$ from *ex-vivo* astrocytes in acute hippocampal slices infected with either all *Ttyh1/2/3* shRNAs or control shRNA. After making a whole-cell patch configuration under the conventional artificial cerebrospinal fluid, we exchanged the external bath solution to the Tris-Cl based isotonic solution which contained 5mM TEA and 5mM BaCl₂ to eliminate the K⁺ conductance of astrocytes and found that the reversal potential of the membrane current shifted from -80mV to near -10mV, which was the equilibrium potential for Cl⁻. Under these recording conditions, the HOS-

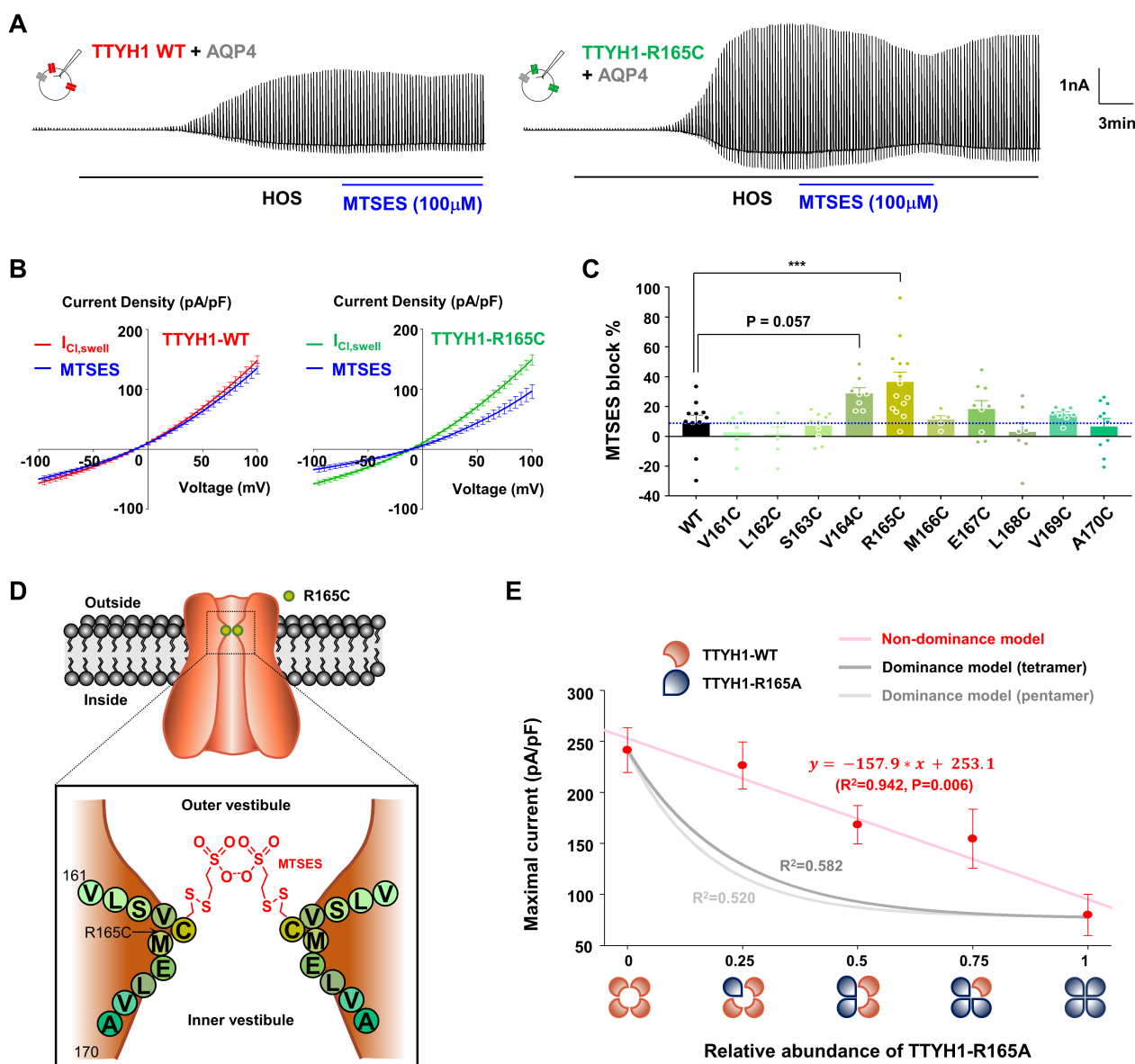


Fig. 9. R165 in TTYH1 is the pore-forming amino acid as evidenced by SCAM. (A) Representative traces of $I_{Cl,swell}$ recording from TTYH1-WT and TTYH1-R165C with AQP4 co-expressing HEK293T cells during treatment HOS (black bar) in the presence or absence of MTSES (100 mM, blue bar). Left upper insets represent TTYH1-WT (red) and TTYH1-R165C (green) with AQP4 (grey) co-expressing HEK293T cells. (B) Averaged I-V curves for $I_{Cl,swell}$ recording from TTYH1-WT and TTYH1-R165C with AQP4 co-expressing HEK293T cells in the absence of MTSES (red and green, respectively) or presence of MTSES (100 mM, blue). (C) Summary bar graph showing the MTSES block percentage (%) recorded from TTYH1-V161C to TTYH1-A170C compared to TTYH1-WT with AQP4 co-expressing HEK293T cells. Data are represented as mean±SEM (n=11 for TTYH1-WT with AQP4 co-expressing HEK293T cells, n=8, 7, 10, 8, 14, 5, 9, 8, 8, and 10 for from TTYH1-V161C to TTYH1-A170C with AQP4 co-expressing HEK293T cells; ***<0.001, Ordinary one-way ANOVA). (D) Schematic diagram of pore-forming subunit of TTYH1 predicted by results from mutagenesis-based structure-activity analysis and SCAM experiment. (E) Summary graph showing the maximal current of $I_{Cl,swell}$ (red, n=12, 10, 16, 9 and 11, respectively) according to the relative abundance of TTYH1-R165A, fitted with linear-regression (pink line, $R^2=0.942, p=0.006$). The non-dominance model for tetramer and pentamer is indicated with dark-grey and grey lines (R^2 between the experimental results and the dominance model of tetramer and pentamer were 0.582 and 0.520, respectively).

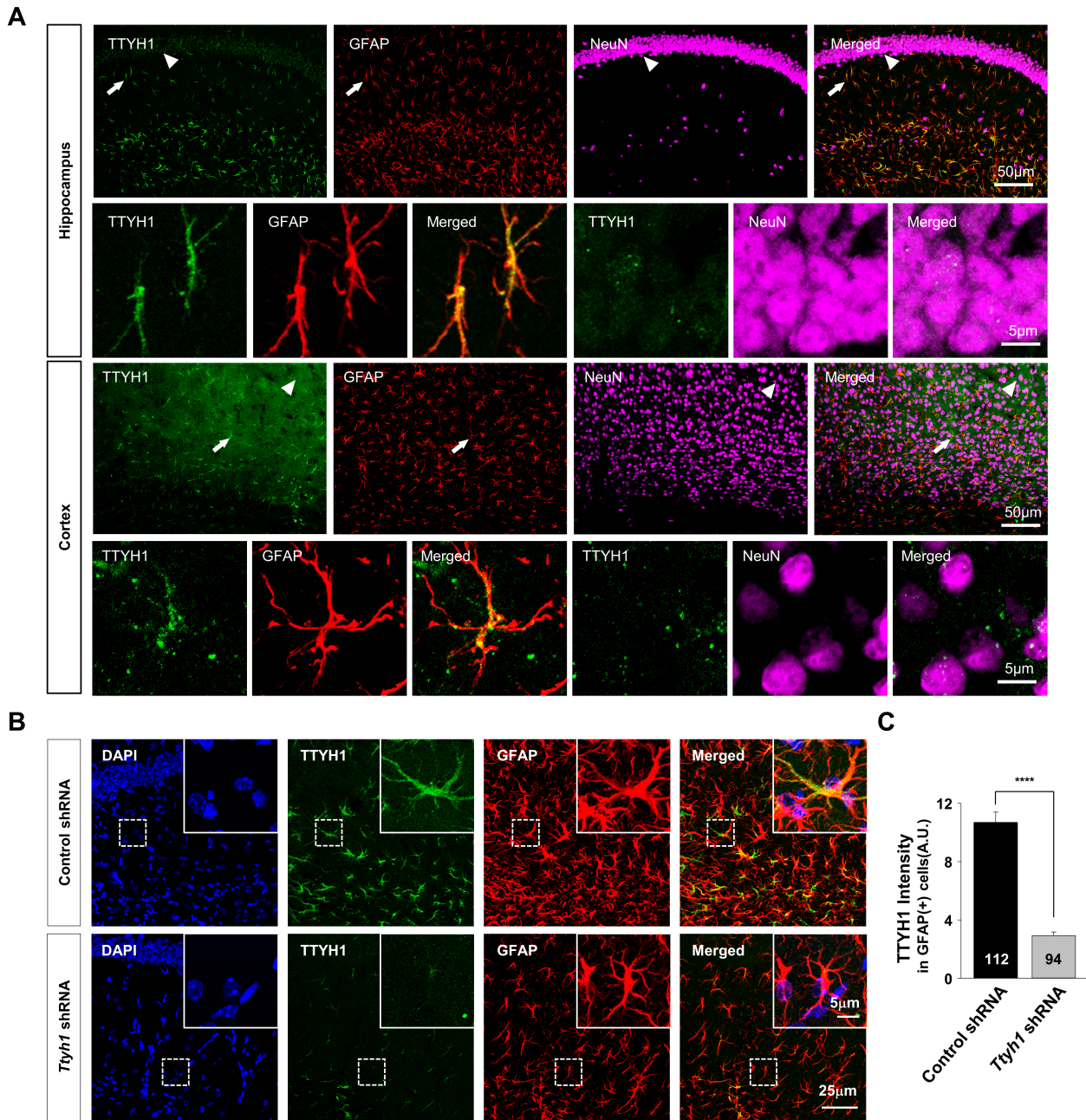


Fig. 10. The $I_{Cl,swell}$ is mediated by TTYH family in *ex-vivo* hippocampal astrocytes. (A) Upper panels in the hippocampus show immunostaining for TTYH1 expression in GFAP-positive (arrow) and NeuN-positive cells (arrowhead) in the hippocampal CA1 region. The lower panel in the hippocampus shows higher magnification images of TTYH1 expression in GFAP-positive (left) and NeuN-positive (right) cells. Upper panels in the cortex show immunostaining for TTYH1 expression in GFAP-positive (arrow) and NeuN-positive (arrowhead) in the cortex. Lower panel in the cortex show higher magnification images of TTYH1 expression in GFAP-positive (right) and NeuN-positive (arrowhead) cells. (B) Immunostaining images from the hippocampus of C57BL/6J mouse injected with AAV-control shRNA (top) or AAV-*Ttyh1* shRNA (bottom) stained with DAPI (blue), TTYH1 (green), GFAP (red) and merged images by confocal microscope. Inset: High magnification images focusing on single GFAP-positive cells from the mouse injected with AAV-control shRNA or *Ttyh1* shRNA stained with DAPI (blue), TTYH1 (green), GFAP (red) and merged images. (C) Quantification of TTYH1 intensity in astrocytes (GFAP-positive cells) from hippocampal CA1 *stratum radiatum* (SR) injected with AAV-virus containing control or all *Ttyh1/2/3* shRNAs. Data are represented as mean±SEM (n=112 and 94 for control and *Ttyh1/2/3* shRNAs; ****<0.0001, unpaired t-test). (D) Top: schematic diagram of whole-cell patch-clamp recordings in SR (left) and representative images for bright-field and fluorescence images showing *Ttyh1/2/3* shRNAs-expressing astrocytes (right). Bottom: representative traces of $I_{Cl,swell}$ in naïve, control and *Ttyh1/2/3* shRNAs expressing astrocytes in SR. (E) Averaged I-V curves for $I_{Cl,swell}$ in naïve (black), control shRNA (blue) and *Ttyh1/2/3* shRNAs (red). (F) Summary bar graph showing the maximal amplitude of $I_{Cl,swell}$ from +100 mV to -100 mV in the naïve, control and *Ttyh1/2/3* shRNAs. Data are represented as mean±SEM (n=10, 10 and 12 for naïve, control shRNA and *Ttyh1/2/3* shRNA; **<0.01, unpaired t-test).

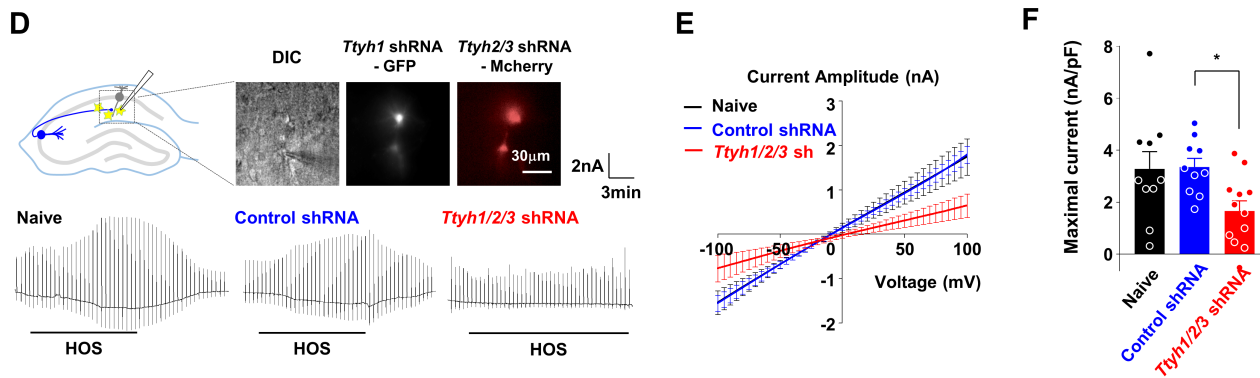


Fig. 10. Continued.

induced astrocytic $I_{Cl,swell}$ was significantly reduced by all *Ttyh1/2/3* shRNAs compared to control shRNA (Fig. 10D~F), indicating that $I_{Cl,swell}$ of hippocampal astrocyte is mediated by TTYH1/2/3. Taken together, these results indicate that TTYH family function as the astrocytic VRAC_{swell} *ex vivo*.

The astrocytic TTYH1/2/3 is necessary and sufficient for RVD in the hippocampus

The primary role of VRAC_{swell} in volume regulation is its participation during RVD. To recapitulate RVD in hippocampal slices, we performed intrinsic optical signal (IOS) imaging which represents the astrocytic volume change through water movement via AQP4 upon repetitive neuronal activity [2, 55]. Among various stimulation protocols, we found that low-frequency stimulation (LFS; 1 Hz) for 30 min at Schaffer-collateral pathway caused an RVD with a continuous increase in IOS, which peaked at around 15 min, followed by a steady decrease in IOS until the end of 30 min stimulation period (Fig. 11A~C, and 11E~G). In contrast, a brief 20 Hz or 100 Hz stimulation only caused a transient IOS, but not DCPIB-sensitive RVD (Fig. 11D). The LFS-induced RVD was completely blocked by DCPIB and genistein treatments (Fig. 11E~G), raising a possibility that the LFS-induced RVD might be mediated by TTYH1/2/3.

To test whether LFS-induced RVD is mediated by TTYH isoforms, we injected lentivirus carrying all *Ttyh1/2/3* shRNAs into CA1 hippocampus (Fig. 11J) and found that the RVD was eliminated by all *Ttyh1/2/3* shRNAs (Fig. 11J~L). The eliminated RVD by all *Ttyh1/2/3* shRNAs was fully rescued by tamoxifen-dependent flanking of shRNAs, which are under the cre/loxP control (pSicoR system [44]) in hGFAP-CreERT2 mice (Fig. 11H~L). These results demonstrate that astrocytic TTYH1/2/3 are necessary and sufficient for RVD in the hippocampus.

DISCUSSION

Our study elucidates for the first time that TTYH family of genes encode the pore-forming subunits of VRAC_{swell} in the brain. Several lines of evidence support this conclusion: (1) The gene-silencing experiments using all three *Ttyh1/2/3* shRNAs reveal that expression of TTYH family is necessary for endogenous $I_{Cl,swell}$ in astrocytes from both primary culture and hippocampal slice and for RVD in hippocampal slice; (2) Overexpression of each TTYH isoforms with AQP4 in HEK293T or CHO-K1 cells is sufficient for further increase of $I_{Cl,swell}$ even in the absence of LRRC8A and this TTYH1/2/3-mediated $I_{Cl,swell}$ shares the same biophysical (outward-rectification, glutamate permeability), biochemical (Ca^{2+} -independency, kinase-dependency) and pharmacological (sensitivity to DCPIB) properties as astrocytic VRAC; (3) The arginine residue at position 165 of TTYH1 and 164 of TTYH2 is the pore-forming amino acid of astrocytic VRAC as evidenced by a complete elimination of $I_{Cl,swell}$ without any disturbance of surface expression by the pore-mutant of either TTYH1-R165A or TTYH2-R164A. This was further strengthened by the failure to rescue $I_{Cl,swell}$ by overexpression of shRNA-insensitive TTYH1-R165A as opposed to the full rescue by overexpression of shRNA-insensitive TTYH1-WT when co-expressed with all three TTYH1/2/3 shRNAs. The most striking evidence for R165 as the pore-forming amino acid residue comes from the significant block of TTYH1-R165C-mediated $I_{Cl,swell}$ by MTSES in SCAM experiment. These lines of evidence provide unequivocal proof that TTYH family is the *bona fide* VRAC_{swell} of the brain.

TTYH family can function as a homomeric channel

One of the unique properties of an ion channel family is its ability to assemble as a homomeric or heteromeric complex to form a functional channel. For TTYH family there are three possible

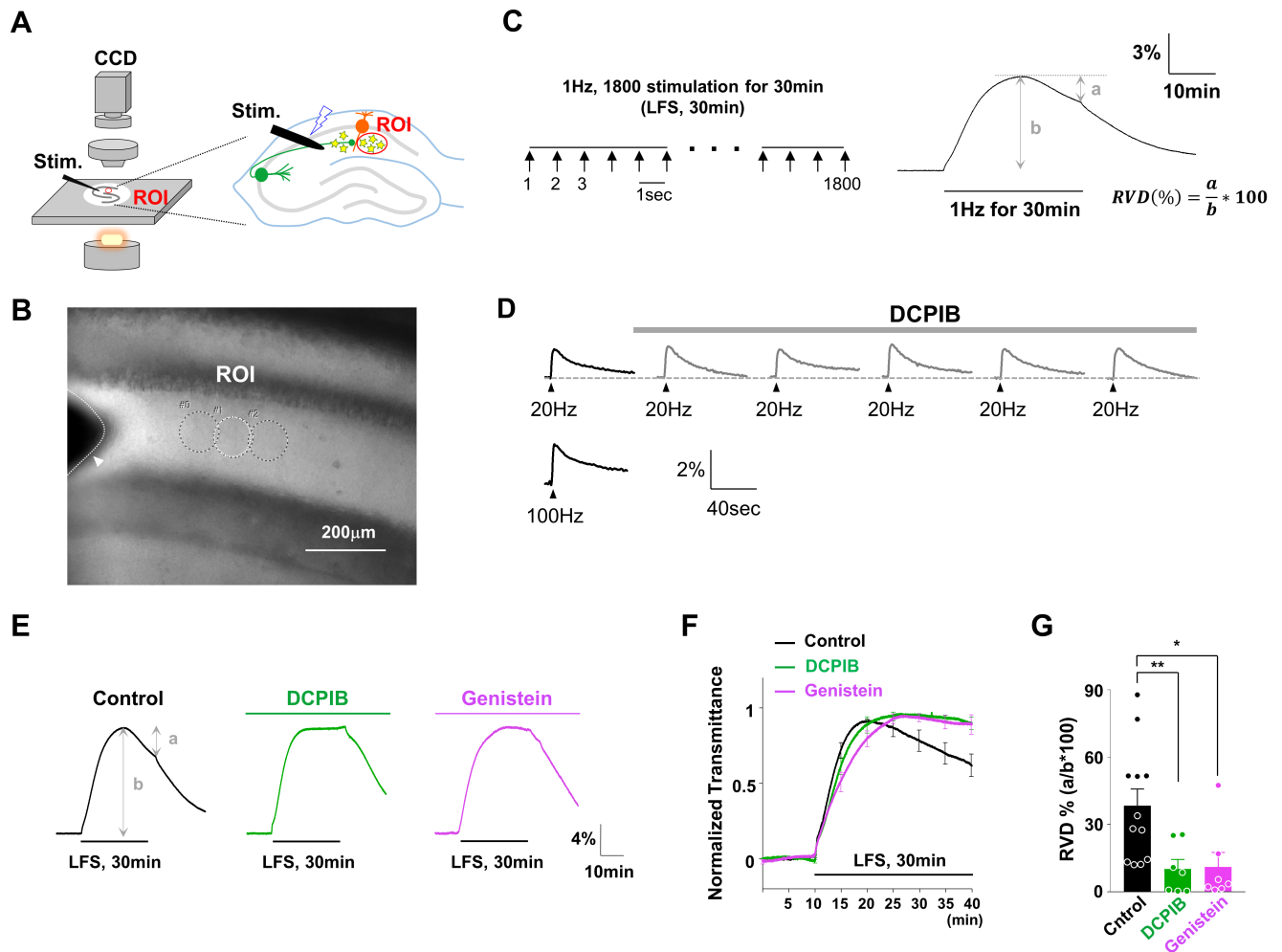


Fig. 11. The astrocytic TTYH1/2/3 is necessary and sufficient for RVD in the hippocampus. (A) Schematic diagram of intrinsic optical signal (IOS) imaging experiment in SR of the hippocampus. (B) Representative bright-field image for IOS recording in SR after stimulating the Schaffer-collateral pathway. A white arrowhead indicates an electrical stimulation electrode in the Schaffer-collateral pathway. A white dotted lined circle indicates regions of interest (ROI). (C) (Left) Schematic diagram for electrical stimulation protocol for inducing RVD in SR of the hippocampus. (Right) The representative trace of IOS change by prolonged 1Hz for 30 min electrical stimulation on the Schaffer-collateral pathway in CA1 hippocampus. The percentage of RVD is calculated with a portion of decreased transmittance (a) from the peak transmittance (b) during 1Hz, 30min stimulation. (D) Upper panels for the representative traces for IOS change indicated as astrocytic volume change before and after treatment of DCPIB (grey line) by brief 20Hz for 1 sec electrical stimulation on the Schaffer-collateral pathway in CA1 hippocampus. Lower representative trace for IOS change by 100Hz for 1 sec electrical stimulation on the Schaffer-collateral pathway in CA1 hippocampus. (E) Representative traces of IOS induced by low-frequency stimulation (LFS) for 30 min in control (black), with 10 mM DCPIB (green) and with 50 mM Genistein (pink). The 'a' indicates the difference between the peak of response and the value of end of stimulation. The 'b' indicates the value of the peak for calculating RVD % (as described in Fig. 11C, a/b*100). (F) Averaged traces for normalized transmittance by the peak of each trace. (G, L) Averaged bar graph of RVD percentage (%). RVD% is calculated by a/b*100. Data are represented as mean ± SEM (n=12, 7 and 7 for control and after DCPIB and Genistein treatment; *<0.05, **<0.01, Kruskal-Wallis test; n=10, 10 and 9 for control and *Ttyh1/2/3* shRNA injected C57BL/6J mice and pSicoR *Ttyh1/2/3* shRNA injected in tamoxifen-treated hGFAP-creERT2 mouse, respectively; *<0.05, **<0.01, NS>0.05, Kruskal-Wallis test) (H) Timeline from tamoxifen injection to IOS imaging. Tamoxifen was into hGFAP-CreERT2 by intraperitoneal (*i.p.*) injection for 6 days. On 7 day, lentivirus containing pSicoR *Ttyh1/2/3* shRNA were injected into CA1 stratum radiatum of the hippocampus. IOS imaging was done 2 weeks after virus injection. (I) In the presence of tamoxifen, the inactivated Cre (CreER) were converted to the activated form of Cre (CreERT), which were translocated into Nucleus. CreERT recognized loxP sites in pSicoR *Ttyh1/2/3* shRNA construct and cleaved the shRNA sequence. (J) Representative fluorescence images of lenti-viral carrying control or *Ttyh1/2/3* shRNA injected into SR of CA1 hippocampus (upper panel). Representative traces of 30 min LFS-induced IOS recording from control shRNA (black), *Ttyh1/2/3* shRNAs (red) injected C57BL/6J mice and glial rescue condition by pSicoR *Ttyh1/2/3* shRNAs injected in tamoxifen-treated hGFAP-creERT2 mouse (blue) (bottom panel). (K) Averaged traces for 30 min LFS-induced IOS recording.

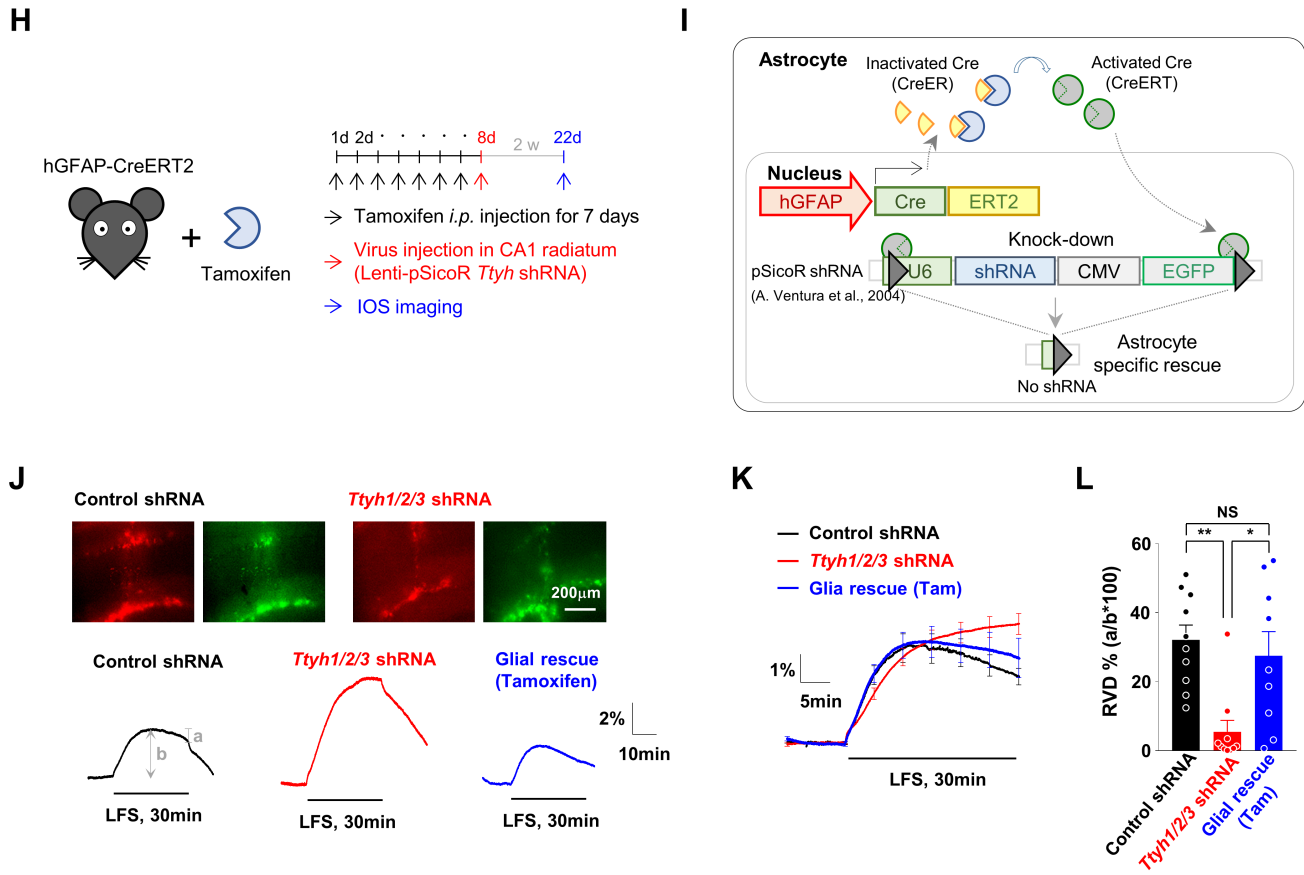


Fig. 11. Continued.

scenarios: (1) each TTYH subunits can assemble as a homomer; (2) TTYH subunits can assemble as a heteromer within TTYH family; and (3) TTYH subunits can assemble as a heteromer with other unknown proteins. Although we cannot completely rule out the possibilities of TTYH subunits assembling as heteromers, our results support the possibility that TTYH subunits can assemble and function as a homomer. If TTYH subunits were assembled only as a heteromer within TTYH family, gene-silencing by the combination of two shRNAs should have been effective to reduce the $I_{Cl,swell}$ in astrocytes. However, this was not the case: Only the combination of all three shRNAs (Fig. 2E, 2G and 2H), but not the combinations of two shRNAs (Fig. 2E and 2F), was able to significantly and fully silence the $I_{Cl,swell}$ in astrocytes. These strongly suggest that TTYH subunits can assemble and function at least as a homomer. It is also unlikely that TTYH subunits assemble with other unknown protein to form a functional channel because heterologous overexpression of each TTYH subunits produced an equal magnitude of $I_{Cl,swell}$ in HEK293T and CHO-K1 cells, which are originated from human kidney and hamster ovary, respectively. The chance of such unknown protein to be expressed at high level

in those two seemingly different cell lines and astrocytes is very low. More importantly, the strongest evidence for homomeric assembly of TTYH in astrocytes comes from the observation that co-expression of shRNA-insensitive TTYH1-WT with all three TTYH1/2/3 shRNAs fully rescued $I_{Cl,swell}$ (Fig. 2E, 2G and 2H), whereas co-expression of the pore-mutant TTYH1-R165A (shRNA-insensitive) and all three *Ttyh1/2/3* shRNAs caused a complete impairment of $I_{Cl,swell}$ (Fig. 8J and 8K). Therefore, we propose that astrocytic $VRAC_{swell}$ is composed of mostly homomers of all three TTYH1/2/3 subunits. Nevertheless, further studies are needed to clarify the exact subunit composition of the TTYH channel.

The relationship between TTYH family and LRRC8A

In this study, we provide unprecedented evidence that each TTYH1/2/3 isoform acts as a pore-forming subunit of $VRAC_{swell}$, while LRRC8A acts as a pore-forming subunit of $VRAC_p$, which modulates the speed of cell swelling and subsequent activation kinetics of $VRAC_{swell}$. These ideas are derived from the detailed analysis of activation kinetics of $I_{Cl,swell}$ recorded from both *Lrrc8a*

and *Ttyh1/2/3* shRNAs expressing cultured astrocytes (Fig. 2I-L). The observations that the peak amplitude of $I_{Cl,swell}$ was almost completely eliminated by *Ttyh1/2/3* shRNAs without affecting the activation kinetics (Fig. 2I and 2J), while there was no change in peak amplitude of $I_{Cl,swell}$ with significantly slower activation kinetics by *Lrrc8a* shRNA (Fig. 2K and 2L), implying that TTYH1/2/3 and LRRC8A might directly or indirectly interact with each other and have distinct roles on activation of $I_{Cl,swell}$ in astrocytes. In support of the possibility of a direct interaction, a recent report demonstrated that LRRC8A directly binds to other ion channels such as TMEM16A (ANO1) in response to swelling by co-immunoprecipitation assay [56], raising a possibility that LRRC8A might also interact with TTYH family.

In support of the possibility of an indirect interaction between TTYH-mediated $VRAC_{swell}$ and LRRC8-mediated $VRAC_r$, a recent report provided a crystal structure of the pore-forming subunits of LRRC8 family [29]. In this report, the authors clearly demonstrated that activation of LRRC8 requires reduced cytosolic ionic strength, but not swelling or membrane stretch [27, 29]. Based on this report and our findings, we now propose a mechanistic model (Fig. 12A) to give a more comprehensive view and to explain the observed difference in activation kinetics of $I_{Cl,swell}$ after *Lrrc8a* shRNA and the maximal current density of $I_{Cl,swell}$ by *Ttyh* shRNA in astrocytes. When HOS(Tris-Cl) is applied in cultured astrocytes, water permeates the astrocytic plasma-membrane through the abundant AQP4 water channel, down the gradient of osmotic pressure. At the intracellular vicinity of AQP4, the ionic strength is instantaneously lowered by the influx of water (due to a dilution of ionic concentration by water). This lowering of ionic strength at the local region activates and opens nearby LRRC8A-mediated $VRAC_r$, allowing the Cl^- ions to initially influx through $VRAC_r$. The influx of Cl^- ions is ensured and potentiated particularly during the current recording by the ramp protocol (a periodic voltage step to +100mV and ramping down to -100 mV). This influx of Cl^- ions through $VRAC_r$ further accelerates the water influx via AQP4 and subsequently induces a cell-swelling. This cell swelling eventually activates and open TTYH-mediated $VRAC_{swell}$. By this time the intracellular Cl^- concentration would have been significantly accumulated, and the opening of $VRAC_{swell}$ allows efflux of Cl^- ions. And the water efflux through AQP4 follows the Cl^- efflux via $VRAC_{swell}$, causing a regulatory volume decrease (RVD). Based on this mechanistic model, we propose that TTYH family constitute the pore-forming subunits of astrocytic $VRAC_{swell}$ which senses the cell swelling, and LRRC8 family constitutes a modulatory channel, $VRAC_r$ which senses the low cytosolic ionic strength to boost anionic influx, water influx, and cell-swelling, facilitating the activation of $VRAC_{swell}$. This model now explains how the gene-

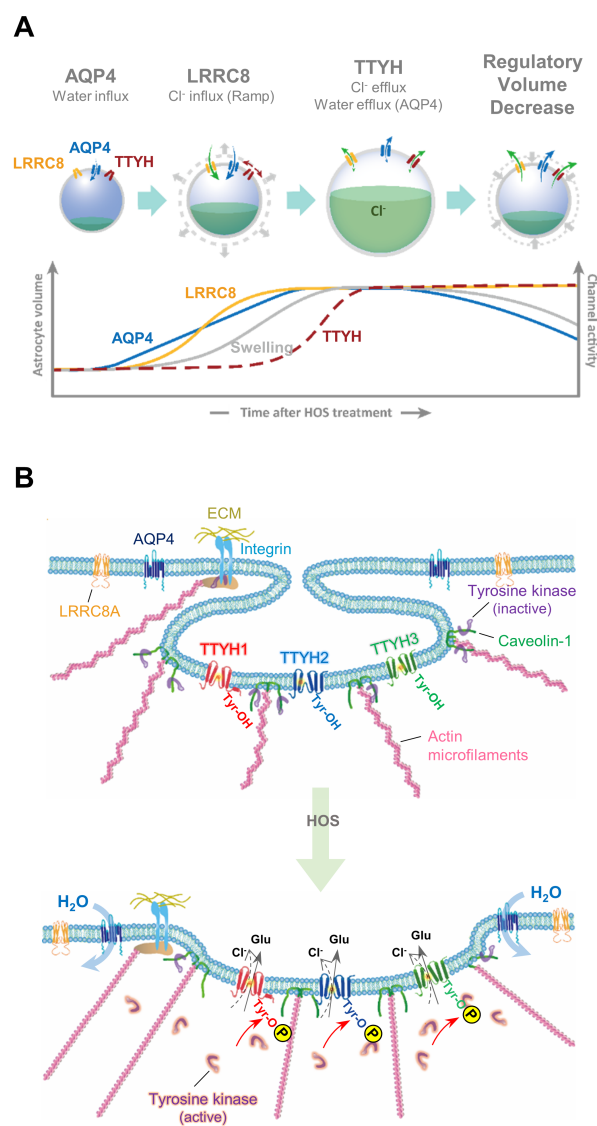


Fig. 12. A mechanistic model of volume regulation. (A) A mechanistic model for the sequence of events after HOS treatment. LRRC8 (yellow), AQP4 (blue), TTYH (red) were indicated in astrocytes (circle). Water or Cl^- fluxes were indicated as a blue and green arrow, respectively. Bottom panel, the graphical diagram of cell swelling (grey) and channel activity (AQP4 indicated as blue, Lrrc8a indicated as yellow, and TTYH indicated as red) with the time after HOS treatment. (B) The schematic model for volume sensing and $VRAC_{swell}$ activation upon inducing cell swelling by HOS. TTYH1, 2 and 3 might be located in the caveolae, which is the structure of the complex including caveolin-1 (green), Integrin (sky blue), and cytoskeleton (pink). After cell swelling, the inactive form of tyrosine kinase (purple) might be activated (orange, active TK).

silencing of LRRC8A by *Lrrc8a shRNA* slows the activation kinetics of $I_{Cl,swell}$ without affecting the maximal current density of $I_{Cl,swell}$. Taken together, the precise relationship between TTYH1/2/3 and LRRC8A and the molecular mechanisms of activation and modulation of $I_{Cl,swell}$ by the association of both TTYH-mediated $VRAC_{swell}$

$_{\text{swell}}$ and LRRC8-mediated VRAC_{T} remain undetermined. Future investigations are needed to test those exciting possibilities.

Molecular mechanisms of volume sensing and VRAC activation

The precise molecular mechanisms of sensing the cell swelling induced by hypo-osmotic shock, leading to an opening of $\text{VRAC}_{\text{swell}}$ are poorly understood. Several hypothetical models for sensing the cell-swelling have been proposed [57-59]; (1) direct sensing of membrane stretch, (2) direct or indirect tethering to the cytoskeleton, (3) alterations in membrane curvature such as caveolae complex by mechanical or membrane-compositional changes, and (4) via interaction with integrins activated by the cell volume perturbation, and (5) via swelling-induced interaction between actin-binding protein (ACTN4) and a cytosolic member of ABC transporter superfamily (ABCF2) prevents ABCF2 from suppressing $\text{VRAC}_{\text{swell}}$. Previous studies supporting these models have identified caveolin-1 and caveolin-related proteins that form a membrane curvature called caveolae in astrocytes [60]. This caveolin-1 is tethered to actin microfilaments [61] and positively modulates the activity of VRAC via c-Src tyrosine kinase [62]. Meanwhile, integrins are known to be associated with not only the extracellular matrix but also caveolin and positively regulate VRAC activation via various kinases such as FAK tyrosine kinase [63]. It has been previously demonstrated that $\alpha 5$ -integrin is co-localized with TTYH1 in TTYH1-GFP over-expressing HEK293T cells [64]. We have demonstrated that TTYH1/2/3-mediated $I_{\text{Cl,swell}}$ is fully blocked by genistein and PD98059, which are the inhibitors of tyrosine kinase and MAP kinase, respectively (Fig. 5A, 5D and Fig. 5H~J). Based on these results, we can propose a mechanistic insight that there exists a complex of caveolin, integrin, cytoskeleton, and TTYH channels at astrocytic membrane curvature called caveolae, and hypo-osmotic shock somehow transduces through the integrin-caveolin-cytoskeleton complex to activate MAP kinase and tyrosine kinase to phosphorylate TTYH channels, which is required for either activation or surface expression of TTYH channels (Fig. 12B). In support of this possibility, we have observed that the surface expression of TTYH1 is enhanced by HOS treatment and prevented by either TK or MAPK inhibitor (Fig. 5K). These exciting possibilities await future investigations.

The physiological and pathological roles of TTYH family in the brain

In addition to the fundamental role of $\text{VRAC}_{\text{swell}}$ in cellular volume regulation, $\text{VRAC}_{\text{swell}}$ is also implicated in many other functions including regulation of cell proliferation, apoptosis and motility, which occur during an early developmental stage in the

embryonic neural stem cells [17, 18]. Consistently, TTYH1 has been shown to be prominently expressed in embryonic stem cells during developmental stages and various brain structures in developing and adult brain, while limited expression was detected in non-neural tissues and cell types [65]. In the brain, TTYH1 appears to be associated with the general functions of $\text{VRAC}_{\text{swell}}$ such as proliferation, apoptosis, and motility. For example, TTYH1 expression was shown to be increased at the edge of extending processes of the migrating cultured astrocytes after a scratch injury [66], suggesting its role in migration. TTYH1 expression is also increased in hypertrophied reactive astrocytes following *status epilepticus* [66], alluding to its role in morphogenesis. In glioma cells, TTYH1 was implicated as a potent regulator of tumor microtubule morphology, tumor-cell invasion, and proliferation [41], which are the putative functions of $\text{VRAC}_{\text{swell}}$.

We have demonstrated that TTYH channels are highly permeable to glutamate ($P_{\text{Glu}}/P_{\text{Cl}} = 0.2\sim 0.3$) (Fig. 5O~S), as $\text{VRAC}_{\text{swell}}$ has been already shown to release glutamate and other osmolytes [8-10, 15, 51]. We have also demonstrated that 1 Hz stimulation in the Schaffer-collateral pathway in the hippocampus causes a profound volume increase and eventual TTYH1-mediated RVD (Fig. 11J~L). It is possible that glutamate released through TTYH channels during RVD might regulate synaptic transmission as well as synaptic plasticity. Consistent with this idea, it has been previously shown that taurine, released through DCPIB-sensitive $\text{VRAC}_{\text{swell}}$, can mediate glycinergic neurotransmission in the hypothalamus [11]. We show that there is no contribution of DCPIB-sensitive RVD after a brief 20 Hz or 100 Hz stimulation at Schaffer-collateral pathway in the hippocampus (Fig. 11D). In contrast, a prolonged 1 Hz stimulation, which is a conventional protocol for long-term depression (LTD) at this synapse, causes a profound increase in volume and initiation of RVD (Fig. 11C, Fig. 11E~G, J~L). During such RVD, glutamate and other osmolytes are expected to be released through TTYH channels and affect synaptic transmission as well as NMDA receptor- or mGluR-dependent synaptic plasticity, in particular, LTD. These exciting possibilities should be explored in the future.

In conclusion, with the advent of molecular identification of TTYH family as the $\text{VRAC}_{\text{swell}}$ of the brain, the putative functions of $\text{VRAC}_{\text{swell}}$ can be systematically addressed at the molecular, cellular and systemic levels in the future. Furthermore, our study should provide novel therapeutic targets for cerebral edema following ischemic stroke, brain trauma, and brain cancer, which are known to be associated with $\text{VRAC}_{\text{swell}}$ [14, 67].

ACKNOWLEDGEMENTS

This study was supported by the Creative Research Initiative Program, Korean National Research Foundation (2015R1A3A2066619), and IBS institutional Grant (IBS-R001-D1).

REFERENCES

- Papadopoulos MC, Verkman AS (2013) Aquaporin water channels in the nervous system. *Nat Rev Neurosci* 14:265-277.
- Woo J, Kim JE, Im JJ, Lee J, Jeong HS, Park S, Jung SY, An H, Yoon S, Lim SM, Lee S, Ma J, Shin EY, Han YE, Kim B, Lee EH, Feng L, Chun H, Yoon BE, Kang I, Dager SR, Lyoo IK, Lee CJ (2018) Astrocytic water channel aquaporin-4 modulates brain plasticity in both mice and humans: a potential gliogenetic mechanism underlying language-associated learning. *Mol Psychiatry* 23:1021-1030.
- Nilius B, Eggermont J, Voets T, Buyse G, Manolopoulos V, Droogmans G (1997) Properties of volume-regulated anion channels in mammalian cells. *Prog Biophys Mol Biol* 68:69-119.
- Parkerson KA, Sontheimer H (2004) Biophysical and pharmacological characterization of hypotonically activated chloride currents in cortical astrocytes. *Glia* 46:419-436.
- Hazama A, Okada Y (1988) Ca^{2+} sensitivity of volume-regulatory K^+ and Cl^- channels in cultured human epithelial cells. *J Physiol* 402:687-702.
- Crépel V, Panenka W, Kelly ME, MacVicar BA (1998) Mitogen-activated protein and tyrosine kinases in the activation of astrocyte volume-activated chloride current. *J Neurosci* 18:1196-1206.
- Kimelberg HK, Macvicar BA, Sontheimer H (2006) Anion channels in astrocytes: biophysics, pharmacology, and function. *Glia* 54:747-757.
- Takano T, Kang J, Jaiswal JK, Simon SM, Lin JH, Yu Y, Li Y, Yang J, Dienel G, Zielke HR, Nedergaard M (2005) Receptor-mediated glutamate release from volume sensitive channels in astrocytes. *Proc Natl Acad Sci U S A* 102:16466-16471.
- Liu HT, Tashmukhamedov BA, Inoue H, Okada Y, Sabirov RZ (2006) Roles of two types of anion channels in glutamate release from mouse astrocytes under ischemic or osmotic stress. *Glia* 54:343-357.
- Liu HT, Akita T, Shimizu T, Sabirov RZ, Okada Y (2009) Bradykinin-induced astrocyte-neuron signalling: glutamate release is mediated by ROS-activated volume-sensitive outwardly rectifying anion channels. *J Physiol* 587:2197-2209.
- Choe KY, Olson JE, Bourque CW (2012) Taurine release by astrocytes modulates osmosensitive glycine receptor tone and excitability in the adult supraoptic nucleus. *J Neurosci* 32:12518-12527.
- Tucker B, Olson JE (2010) Glutamate receptor-mediated taurine release from the hippocampus during oxidative stress. *J Biomed Sci* 17 Suppl 1:S10.
- Kimelberg HK (1995) Current concepts of brain edema. Review of laboratory investigations. *J Neurosurg* 83:1051-1059.
- Kimelberg HK (2005) Astrocytic swelling in cerebral ischemia as a possible cause of injury and target for therapy. *Glia* 50:389-397.
- Zhang Y, Zhang H, Feustel PJ, Kimelberg HK (2008) DCPIB, a specific inhibitor of volume regulated anion channels (VRACs), reduces infarct size in MCAo and the release of glutamate in the ischemic cortical penumbra. *Exp Neurol* 210:514-520.
- Ransom CB, O'Neal JT, Sontheimer H (2001) Volume-activated chloride currents contribute to the resting conductance and invasive migration of human glioma cells. *J Neurosci* 21:7674-7683.
- Okada Y, Sato K, Numata T (2009) Pathophysiology and puzzles of the volume-sensitive outwardly rectifying anion channel. *J Physiol* 587:2141-2149.
- Hoffmann EK, Holm NB, Lambert IH (2014) Functions of volume-sensitive and calcium-activated chloride channels. *IUBMB Life* 66:257-267.
- Shimizu T, Lee EL, Ise T, Okada Y (2008) Volume-sensitive Cl^- channel as a regulator of acquired cisplatin resistance. *Anticancer Res* 28:75-83.
- Lee EL, Shimizu T, Ise T, Numata T, Kohno K, Okada Y (2007) Impaired activity of volume-sensitive Cl^- channel is involved in cisplatin resistance of cancer cells. *J Cell Physiol* 211:513-521.
- Okada Y (1997) Volume expansion-sensing outward-rectifier Cl^- channel: fresh start to the molecular identity and volume sensor. *Am J Physiol* 273:C755-C789.
- Clapham DE (1998) The list of potential volume-sensitive chloride currents continues to swell (and shrink). *J Gen Physiol* 111:623-624.
- Nilius B, Droogmans G (2003) Amazing chloride channels: an overview. *Acta Physiol Scand* 177:119-147.
- Hoffmann EK, Lambert IH, Pedersen SF (2009) Physiology of cell volume regulation in vertebrates. *Physiol Rev* 89:193-277.
- Qiu Z, Dubin AE, Mathur J, Tu B, Reddy K, Miraglia LJ, Re-

- inhardt J, Orth AP, Patapoutian A (2014) SWELL1, a plasma membrane protein, is an essential component of volume-regulated anion channel. *Cell* 157:447-458.
26. Voss FK, Ullrich F, Münch J, Lazarow K, Lutter D, Mah N, Andrade-Navarro MA, von Kries JP, Stauber T, Jentsch TJ (2014) Identification of LRRC8 heteromers as an essential component of the volume-regulated anion channel VRAC. *Science* 344:634-638.
 27. Syeda R, Qiu Z, Dubin AE, Murthy SE, Florendo MN, Mason DE, Mathur J, Cahalan SM, Peters EC, Montal M, Patapoutian A (2016) LRRC8 proteins form volume-regulated anion channels that sense ionic strength. *Cell* 164:499-511.
 28. Okada T, Islam MR, Tsisferova NA, Okada Y, Sabirov RZ (2017) Specific and essential but not sufficient roles of LRRC8A in the activity of volume-sensitive outwardly rectifying anion channel (VSOR). *Channels (Austin)* 11:109-120.
 29. Deneka D, Sawicka M, Lam AK, Paulino C, Dutzler R (2018) Structure of a volume-regulated anion channel of the LRRC8 family. *Nature* 558:254-259.
 30. Sirianant L, Ousingsawat J, Wanitchakool P, Schreiber R, Kunzelmann K (2016) Cellular volume regulation by anoctamin 6: Ca²⁺, phospholipase A2 and osmosensing. *Pflugers Arch* 468:335-349.
 31. Sirianant L, Wanitchakool P, Ousingsawat J, Benedetto R, Zormpa A, Cabrita I, Schreiber R, Kunzelmann K (2016) Non-essential contribution of LRRC8A to volume regulation. *Pflugers Arch* 468:805-816.
 32. Akita T, Okada Y (2014) Characteristics and roles of the volume-sensitive outwardly rectifying (VSOR) anion channel in the central nervous system. *Neuroscience* 275:211-231.
 33. Gaitán-Peñas H, Gradogna A, Laparra-Cuervo L, Solsona C, Fernández-Dueñas V, Barrallo-Gimeno A, Ciruela F, Lakadamyali M, Pusch M, Estévez R (2016) Investigation of LRRC8-mediated volume-regulated anion currents in *Xenopus* oocytes. *Biophys J* 111:1429-1443.
 34. Park H, Han KS, Oh SJ, Jo S, Woo J, Yoon BE, Lee CJ (2013) High glutamate permeability and distal localization of Best1 channel in CA1 hippocampal astrocyte. *Mol Brain* 6:54.
 35. Lee S, Yoon BE, Berglund K, Oh SJ, Park H, Shin HS, Augustine GJ, Lee CJ (2010) Channel-mediated tonic GABA release from glia. *Science* 330:790-796.
 36. Milenkovic A, Brandl C, Milenkovic VM, Jendryke T, Sirianant L, Wanitchakool P, Zimmermann S, Reiff CM, Horling F, Schrewe H, Schreiber R, Kunzelmann K, Wetzel CH, Weber BH (2015) Bestrophin 1 is indispensable for volume regulation in human retinal pigment epithelium cells. *Proc Natl Acad Sci U S A* 112:E2630-E2639.
 37. Fujii Y, Maekawa S, Morita M (2017) Astrocyte calcium waves propagate proximally by gap junction and distally by extracellular diffusion of ATP released from volume-regulated anion channels. *Sci Rep* 7:13115.
 38. Sabirov RZ, Okada Y (2009) The maxi-anion channel: a classical channel playing novel roles through an unidentified molecular entity. *J Physiol Sci* 59:3-21.
 39. Suzuki M (2006) The *Drosophilatweety* family: molecular candidates for large-conductance Ca²⁺-activated Cl⁻ channels. *Exp Physiol* 91:141-147.
 40. Okada Y, Okada T, Islam M R, Sabirov RZ (2018) Molecular identities and ATP release activities of two types of volume-regulatory anion channels, VSOR and Maxi-Cl. *Curr Top Membr* 81:125-176.
 41. Jung E, Osswald M, Blaes J, Wiestler B, Sahn F, Schmenger T, Solecki G, Deumelandt K, Kurz FT, Xie R, Weil S, Heil O, Thomé C, Gömmel M, Syed M, Häring P, Huber PE, Heiland S, Platten M, von Deimling A, Wick W, Winkler F (2017) Tweety-homolog 1 drives brain colonization of gliomas. *J Neurosci* 37:6837-6850.
 42. Zhang Y, Chen K, Sloan SA, Bennett ML, Scholze AR, O'Keefe S, Phatnani HP, Guarnieri P, Caneda C, Ruderisch N, Deng S, Liddelow SA, Zhang C, Daneman R, Maniatis T, Barres BA, Wu JQ (2014) An RNA-sequencing transcriptome and splicing database of glia, neurons, and vascular cells of the cerebral cortex. *J Neurosci* 34:11929-11947.
 43. Woo DH, Han KS, Shim JW, Yoon BE, Kim E, Bae JY, Oh SJ, Hwang EM, Marmorstein AD, Bae YC, Park JY, Lee CJ (2012) TREK-1 and Best1 channels mediate fast and slow glutamate release in astrocytes upon GPCR activation. *Cell* 151:25-40.
 44. Ventura A, Meissner A, Dillon CP, McManus M, Sharp PA, Van Parijs L, Jaenisch R, Jacks T (2004) Cre-lox-regulated conditional RNA interference from transgenes. *Proc Natl Acad Sci U S A* 101:10380-10385.
 45. Park H, Oh SJ, Han KS, Woo DH, Park H, Mannaioni G, Traynelis SF, Lee CJ (2009) Bestrophin-1 encodes for the Ca²⁺-activated anion channel in hippocampal astrocytes. *J Neurosci* 29:13063-13073.
 46. Benfenati V, Nicchia GP, Svelto M, Rapisarda C, Frigeri A, Ferroni S (2007) Functional down-regulation of volume-regulated anion channels in AQP4 knockdown cultured rat cortical astrocytes. *J Neurochem* 100:87-104.
 47. Oh SJ, Lee CJ (2017) Distribution and function of the bestrophin-1 (Best1) channel in the brain. *Exp Neurobiol* 26:113-121.
 48. Marmorstein LY, Wu J, McLaughlin P, Yocom J, Karl MO, Neussert R, Wimmers S, Stanton JB, Gregg RG, Strauss O,

- Peachey NS, Marmorstein AD (2006) The light peak of the electroretinogram is dependent on voltage-gated calcium channels and antagonized by bestrophin (best-1). *J Gen Physiol* 127:577-589.
49. Wang R, Lu Y, Gunasekar S, Zhang Y, Benson CJ, Chapleau MW, Sah R, Abboud FM (2017) The volume-regulated anion channel (LRRC8) in nodose neurons is sensitive to acidic pH. *JCI Insight* 2:e90632.
50. Decher N, Lang HJ, Nilius B, Brüggemann A, Busch AE, Steinmeyer K (2001) DCPIB is a novel selective blocker of I(Cl,swell) and prevents swelling-induced shortening of guinea-pig atrial action potential duration. *Br J Pharmacol* 134:1467-1479.
51. Abdullaev IF, Rudkouskaya A, Schools GP, Kimelberg HK, Mongin AA (2006) Pharmacological comparison of swelling-activated excitatory amino acid release and Cl⁻ currents in cultured rat astrocytes. *J Physiol* 572:677-689.
52. Jackson PS, Morrison R, Strange K (1994) The volume-sensitive organic osmolyte-anion channel VSOAC is regulated by nonhydrolytic ATP binding. *Am J Physiol* 267:C1203-C1209.
53. He Y, Ramsay AJ, Hunt ML, Whitbread AK, Myers SA, Hooper JD (2008) N-glycosylation analysis of the human Tweety family of putative chloride ion channels supports a pentaspanning membrane arrangement: impact of N-glycosylation on cellular processing of Tweety homologue 2 (TTYH2). *Biochem J* 412:45-55.
54. Geiger JR, Melcher T, Koh DS, Sakmann B, Seeburg PH, Jonas P, Monyer H (1995) Relative abundance of subunit mRNAs determines gating and Ca²⁺ permeability of AMPA receptors in principal neurons and interneurons in rat CNS. *Neuron* 15:193-204.
55. MacVicar BA, Hochman D (1991) Imaging of synaptically evoked intrinsic optical signals in hippocampal slices. *J Neurosci* 11:1458-1469.
56. Benedetto R, Sirianant L, Pankonien I, Wanitchakool P, Ousingawatt J, Cabrita I, Schreiber R, Amaral M, Kunzelmann K (2016) Relationship between TMEM16A/anoctamin 1 and LRRC8A. *Pflugers Arch* 468:1751-1763.
57. Pedersen SF, Kapus A, Hoffmann EK (2011) Osmosensory mechanisms in cellular and systemic volume regulation. *J Am Soc Nephrol* 22:1587-1597.
58. Ando-Akatsuka Y, Shimizu T, Numata T, Okada Y (2012) Involvements of the ABC protein ABCF2 and alpha-actinin-4 in regulation of cell volume and anion channels in human epithelial cells. *J Cell Physiol* 227:3498-3510.
59. Okada Y, Okada T, Sato-Numata K, Islam MR, Ando-Akatsuka Y, Numata T, Kubo M, Shimizu T, Kurbannazarova RS, Marunaka Y, Sabirov RZ (2019) Cell volume-activated and volume-correlated anion channels in mammalian cells: their biophysical, molecular, and pharmacological properties. *Pharmacol Rev* 71:49-88.
60. Cameron PL, Ruffin JW, Bollag R, Rasmussen H, Cameron RS (1997) Identification of caveolin and caveolin-related proteins in the brain. *J Neurosci* 17:9520-9535.
61. Stahlhut M, van Deurs B (2000) Identification of filamin as a novel ligand for caveolin-1: evidence for the organization of caveolin-1-associated membrane domains by the actin cytoskeleton. *Mol Biol Cell* 11:325-337.
62. Trouet D, Carton I, Hermans D, Droogmans G, Nilius B, Eggermont J (2001) Inhibition of VRAC by c-Src tyrosine kinase targeted to caveolae is mediated by the Src homology domains. *Am J Physiol Cell Physiol* 281:C248-C256.
63. Browe DM, Baumgarten CM (2003) Stretch of beta 1 integrin activates an outwardly rectifying chloride current via FAK and Src in rabbit ventricular myocytes. *J Gen Physiol* 122:689-702.
64. Matthews CA, Shaw JE, Hooper JA, Young IG, Crouch MF, Campbell HD (2007) Expression and evolution of the mammalian brain gene Ttyh1. *J Neurochem* 100:693-707.
65. Kleinman CL, Gerges N, Papillon-Cavanagh S, Sin-Chan P, Pramatarova A, Quang DA, Adoue V, Busche S, Caron M, Djambazian H, Bemmo A, Fontebasso AM, Spence T, Schwartzentruber J, Albrecht S, Hauser P, Garami M, Klekner A, Bogner L, Montes JL, Staffa A, Montpetit A, Berube P, Zakrzewska M, Zakrzewski K, Liberski PP, Dong Z, Siegel PM, Duchaine T, Perotti C, Fleming A, Fauray D, Remke M, Gallo M, Dirks P, Taylor MD, Sladek R, Pastinen T, Chan JA, Huang A, Majewski J, Jabado N (2014) Fusion of TTYH1 with the C19MC microRNA cluster drives expression of a brain-specific DNMT3B isoform in the embryonal brain tumor ETMR. *Nat Genet* 46:39-44.
66. Wiernasz E, Kaliszewska A, Brutkowski W, Bednarczyk J, Gorniak M, Kaza B, Lukasiuk K (2014) Ttyh1 protein is expressed in glia *in vitro* and shows elevated expression in activated astrocytes following status epilepticus. *Neurochem Res* 39:2516-2526.
67. Raslan A, Bhardwaj A (2007) Medical management of cerebral edema. *Neurosurg Focus* 22:E12.