

SCIENTIFIC REPORTS

OPEN

Author Correction: Functional eubacteria species along with trans-domain gut inhabitants favour dysgenic diversity in oxalate stone disease

Mangesh V. Suryavanshi^{1,2}, Shrikant S. Bhute^{1,3}, Rahul P. Gune⁴ & Yogesh S. Shouche¹

Correction to: *Scientific Reports* <https://doi.org/10.1038/s41598-018-33773-5>, published online 09 November 2018

This Article contains an error in the order of the Figures. Figures 2, 3 and 4 were published as Figures 4, 2, and 3 respectively. The correct Figures 2, 3 and 4 appear below as Figs 1, 2 and 3 respectively. The Figure legends are correct.

¹National Centre for Microbial Resource, National Centre for Cell Science, Central Tower, Sai Trinity Building Garware Circle, Sutarwadi, Pashan Pune, 411021, (M.S.), India. ²Yenepoya Reseach Centre, Yenepoya University, Mangalore, 575018, (K.S.), India. ³School of Life Sciences, University of Nevada, Las Vegas, Nevada, 89154, USA. ⁴Department of Urology, RCSM Govt. Medical College, CPR Hospital Compound, Bhausingji Rd, Kolhapur, 416002, (M.S.), India. Correspondence and requests for materials should be addressed to Y.S.S. (email: yogesh@nccs.res.in)

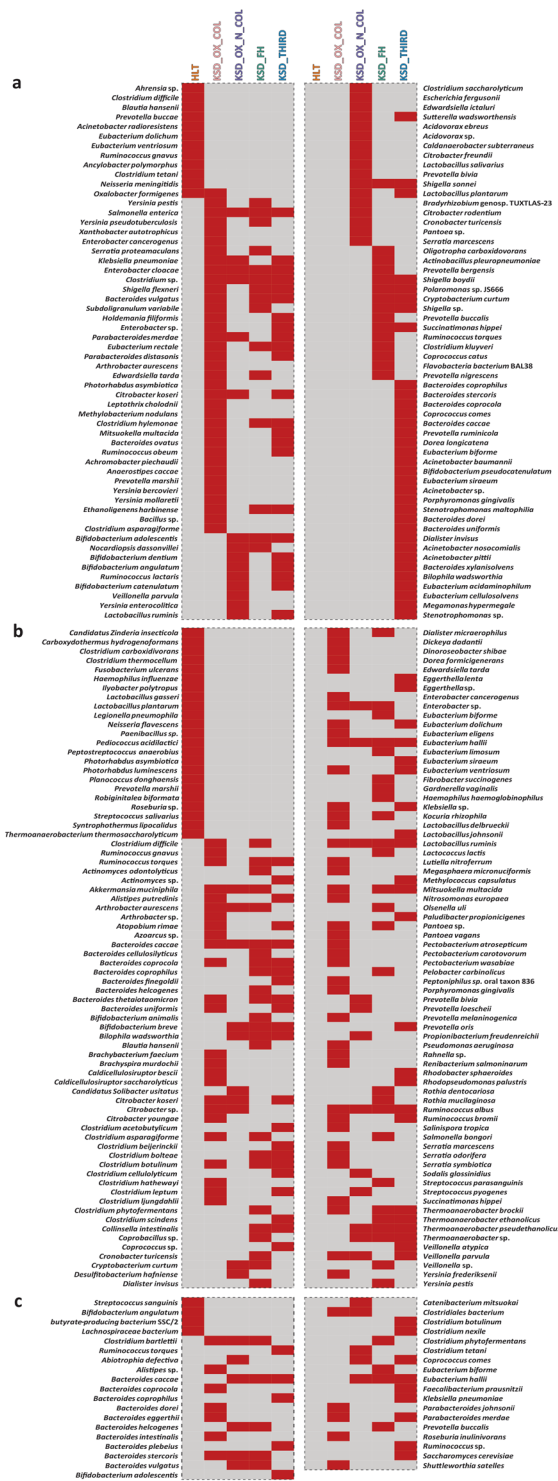


Figure 1. Heat map showing the status of functional eubacteria in different groups in tested subjects. **(a)** Heat map for total OMBS diversity players observed by frc-gene sequence analysis, and **(b,c)** reflects the Butyrate (known-SCFA) producer observed by but- and buk-gene sequence analysis respectively. Only presence-absence data represented here whereas the OMBS diversity data has been adopted from Suryavanshi *et al.*¹¹.

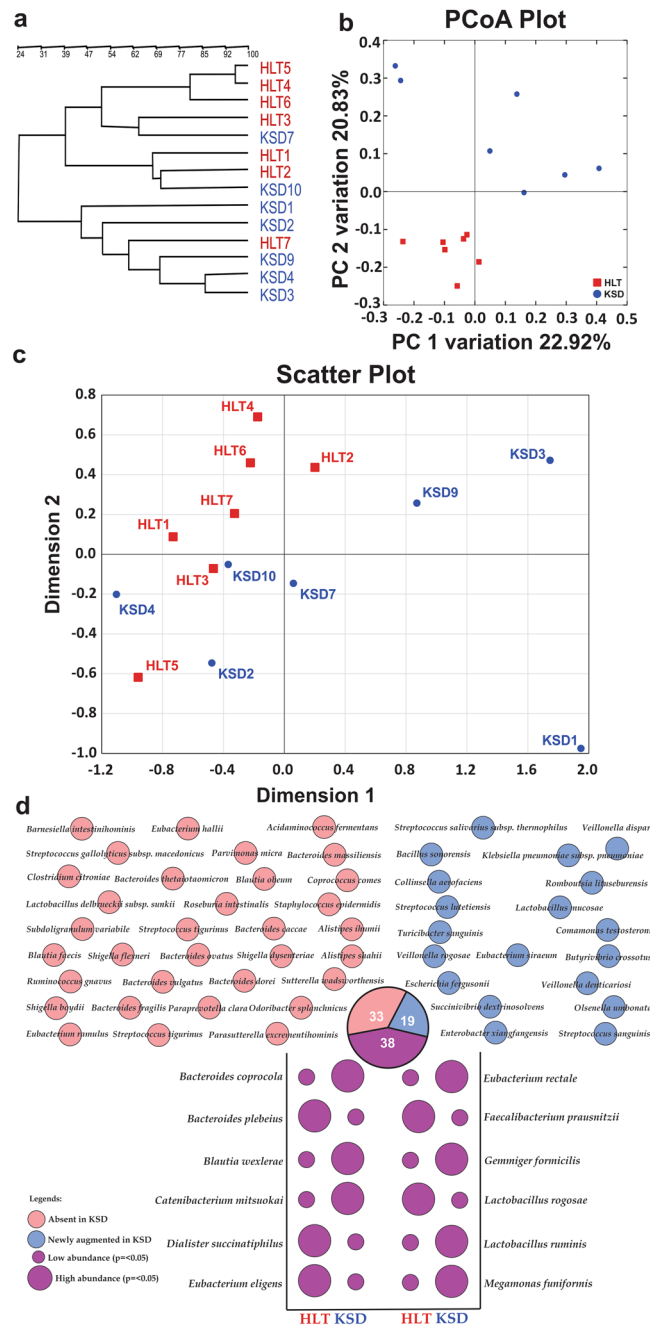


Figure 2. Compositional differences in eubacteria diversity in study subpopulations (HLT = 07 and KSD = 07). Clustering pattern of tested subpopulation through (a). PCR-DGGE fingerprint analysis in UPGMA algorithm, (b). PCoA plot and (c). IKF values on scattered plot derived from K-Shuff algorithm. (d) Species level diversity differences observed in HLT and KSD subjects, whereas shared species with significant difference (Welch's test $p < 0.05$) were annotated in bubble plot.

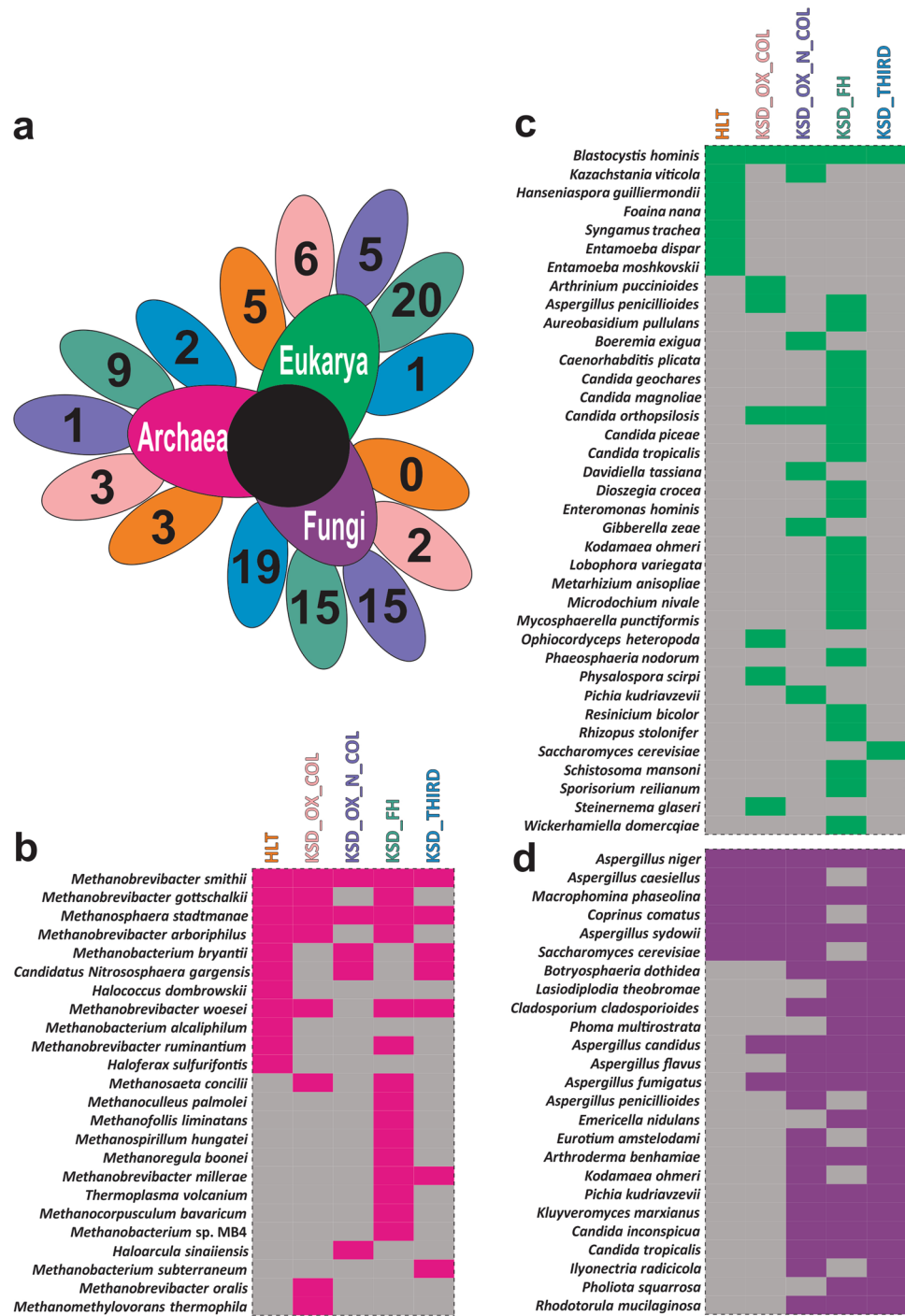


Figure 3. Trans-domain species diversity present in 5 groups (a) Diagrammatic illustration of unique Trans-domain species in each group, whereas comparison in HLT and KSD subjects only. The color of petal indicates the number of unique species either in HLT or KSD subject within 5 group. (b–d) Heatmap showing the species diversity in each five groups with pink (archaea), green (microeukaryotes) and violet (fungi) represents actual trans-domain components. Diversity was studied by the conserved genes such as 16S rRNA gene (archaea and eubacteria), 18S rRNA gene (microeukaryotes) and ITS region (fungi) sequencing. Presence and absence of gene bearing species data utilized for the representation.



Open Access This article is licensed under a Creative Commons Attribution 4.0 International License, which permits use, sharing, adaptation, distribution and reproduction in any medium or format, as long as you give appropriate credit to the original author(s) and the source, provide a link to the Creative Commons license, and indicate if changes were made. The images or other third party material in this article are included in the article's Creative Commons license, unless indicated otherwise in a credit line to the material. If material is not included in the article's Creative Commons license and your intended use is not permitted by statutory regulation or exceeds the permitted use, you will need to obtain permission directly from the copyright holder. To view a copy of this license, visit <http://creativecommons.org/licenses/by/4.0/>.

© The Author(s) 2019