

## Research



**Cite this article:** Bell-Roberts L, Douglas AE, Werner GDA. 2019 Match and mismatch between dietary switches and microbial partners in plant sap-feeding insects.

*Proc. R. Soc. B* **286**: 20190065.

<http://dx.doi.org/10.1098/rspb.2019.0065>

Received: 9 January 2019

Accepted: 18 April 2019

**Subject Category:**

Evolution

**Subject Areas:**

evolution

**Keywords:**

mutualism, nutritional symbiosis, xylem, sap, symbiont switch, mutualism loss

**Author for correspondence:**

Gijsbert D. A. Werner

e-mail: [gijsbert.werner@balliol.ox.ac.uk](mailto:gijsbert.werner@balliol.ox.ac.uk)

Electronic supplementary material is available online at <https://dx.doi.org/10.6084/m9.figshare.c.4486745>.

# Match and mismatch between dietary switches and microbial partners in plant sap-feeding insects

Louis Bell-Roberts<sup>1</sup>, Angela E. Douglas<sup>2,3</sup> and Gijsbert D. A. Werner<sup>1,4</sup>

<sup>1</sup>Department of Zoology, University of Oxford, Oxford OX1 3PS, UK

<sup>2</sup>Department of Entomology and <sup>3</sup>Department of Molecular Biology and Genetics, Cornell University, Ithaca, NY 14853, USA

<sup>4</sup>Balliol College, University of Oxford, Oxford OX1 3BJ, UK

AED, 0000-0001-5212-6826; GDAW, 0000-0002-5426-2562

Some animal groups associate with the same vertically transmitted microbial symbionts over extended periods of evolutionary time, punctuated by occasional symbiont switches to different microbial taxa. Here we test the oft-repeated suggestion that symbiont switches are linked with host diet changes, focusing on hemipteran insects of the suborder Auchenorrhyncha. These insects include the only animals that feed on plant xylem sap through the life cycle, as well as taxa that feed on phloem sap and plant parenchyma cells. Ancestral state reconstruction provides strong statistical support for a xylem feeding auchenorrhynchan ancestor bearing the dual symbiosis with the primary symbiont *Sulcia* (Bacteroidetes) and companion symbiont 'β-Sym' (β-proteobacteria). We identified seven dietary transitions from xylem feeding (six to phloem feeding, one to parenchyma feeding), but no reversions to xylem feeding; five evolutionary losses of *Sulcia*, including replacements by yeast symbionts, exclusively in phloem/parenchyma-feeding lineages; and 14–15 losses of β-Sym, including nine transitions to a different bacterial companion symbiont. Our analysis indicates that, although companion symbiont switching is not associated with shifts in host diet, *Sulcia* is probably required for xylem-feeding. Furthermore, the ancestral auchenorrhynchan bearing *Sulcia* and β-Sym probably represents the sole evolutionary origin of xylem feeding in the animal kingdom.

## 1. Introduction

Various ecologically important traits of many animals are mediated by symbiotic microorganisms [1,2]. For example, microbial symbionts may produce toxins that protect their animal host from specific pathogens or synthesize nutrients that enable their host to use otherwise inadequate diets [3,4]. Many of these symbioses display high partner fidelity over long periods of evolutionary time, often with strict co-diversification of host and symbiont lineages [5,6]. However, both symbiont loss and symbiont switching, often to a phylogenetically distant microbial taxon, has been identified in many host lineages, especially among insects [7–10], as well as in other invertebrate taxa [11]. It has been suggested that symbiont switching may be linked to changes in host traits, e.g. shifts in habitat or diet [12,13], potentially with major ecological and evolutionary consequences for the host [14]. For instance, symbiont switching has been suggested to have been an important driver of host diversification [15,16]. Yet despite their potential importance, hypotheses of links between diet and symbiont switching have rarely been tested formally, limiting our insight into their general applicability across taxa. In recent years, however, our capacity to evaluate such hypotheses has greatly increased by advances in phylogenetic comparative methods, such as ancestral state reconstructions (ASRs) [17].

The purpose of this study was to investigate the patterns of symbiont switches by analysis of the temporal relationship between evolutionary shifts in host diet and symbiotic partners. Insects of the order Hemiptera are well suited to this problem for two linked reasons. First, uniquely among animals, some hemipterans can use different types of plant sap (i.e. phloem or xylem) through the life cycle; and, second, this trait is correlated with possession of vertically transmitted microbial symbionts that overproduce essential amino acids, nutrients in short supply in plant sap [1,18]. Our specific focus is the suborder Auchenorrhyncha, which includes the only insects that feed on xylem sap through the life cycle, as well as representatives that feed on phloem sap and the more nutritious diet of whole plant cell contents [19]. The Auchenorrhyncha comprises two infra-orders, the Fulgoromorpha (the planthoppers) and Cicadomorpha (including the leafhoppers, cicadas and froghoppers) [20,21]. Many taxa of both infra-orders bear a dual symbiosis with a bacterium *Candidatus Sulcia muelleri* (Bacteroidetes), also referred to as ‘the primary symbiont’ [1,22], and a  $\beta$ -proteobacterium, which is variously known as:  $\beta$ -Sym, *Ca. Nasuia deltocephalinicola* in leafhoppers, *Ca. Vidania fulgoroideae* in planthoppers and *Ca. Zinderia insecticola* in spittlebugs, or more generally as a ‘companion symbiont’ to *Sulcia* [23–27]. Some auchenorrhynchans, however, bear *Sulcia* as the sole symbiont, associate with a companion symbiont other than  $\beta$ -Sym [28–31], or have ascomycete fungal symbionts, generically known as yeast-like symbionts (YLS) [32–35]. This rich diversity of symbionts with functions closely tied to host diet provides a superb basis to test the relationship between switches in diet and symbiont identity.

In this study, we generated a detailed phylogeny of the Auchenorrhyncha. We then mapped key symbiont associations (primary and companion symbiont status) and host diet onto this phylogeny and used a comparative approach to study the association between symbiont and diet. This allowed us to investigate the patterns of association between transitions in symbiont identity—including symbiont losses—and diet across large numbers of clades over long periods of time.

## 2. Material and methods

### (a) Phylogeny

We generated a phylogeny at the genus level for the Auchenorrhyncha using a supermatrix approach [36], using five marker genes that had previously been used to study hemipteran phylogeny (*18S*, *28S*, *COI*, *Wingless* and *Histone 3*) [20,37,38]. We used PHYLOGENATOR (v. 2) [39] to obtain sequences for all auchenorrhynchan genera with any of these markers available in NCBI GenBank. We employed the referenceDownload method to select high-quality representative sequences for each genus, based on reference sequences from [20]. A genus can thus be represented by sequences from different species within the genus. For each marker gene, the selected sequences were aligned using MAFFT (v. 7.310) [40]. We then concatenated the five alignments, and visually verified the quality of the resulting supermatrix of 824 genera and 7243 bp using ALIVIEW (v. 1.20) [41]. We created a maximum-likelihood (ML) phylogeny in RAXML (v. 8.2.8) using a GTRCAT substitution model and rapid bootstrapping (100 replicates) followed by a thorough ML search [42]. The branch lengths of the bootstrap replicates were optimized using GTRGAMMA. Based on [20,21], the

genera *Ceratocombus* (Heteroptera) and *Xenophyes* (Coleorrhyncha) were used as an outgroup to root the tree, and we used the NCBI taxonomy at the subfamily level to constrain our tree search. We used r8s (v. 1.8), employing the Langley–Fitch method and a truncated newton (TN) algorithm to convert our ML phylogeny to a timetree [43]. To date the phylogeny, we fixed the root to 299 Ma and constrained a further 17 nodes based on previous estimates of divergence times (electronic supplementary material, table S1).

### (b) Trait dataset

We conducted a systematic search of the primary literature to compile information on three auchenorrhynchan traits of interest: (i) diet, (ii) primary symbiont association status, and (iii) companion symbiont association status. We obtained data from 34 different studies, covering a total of 162 unique genera (full references in the electronic supplementary material, table S3). We recorded data and performed all our analyses at the genus level because variation in the traits of interest was not evident at the subgenus level. Primary symbiosis was treated as a binary variable: the presence of primary endosymbiont *Candidatus Sulcia muelleri* versus absence [22]. For the companion symbiosis, we recorded the taxonomic identity of the endosymbiont. We then clustered this into a categorical variable with five levels: (i)  $\alpha$ -proteobacteria (*Candidatus Hodgkinia cicadicola*), (ii)  $\beta$ -proteobacteria (*Candidatus Vidania fulgoroideae*; *Candidatus Zinderia insecticola*; *Candidatus Nasuia deltocephalinicola*), (iii)  $\gamma$ -proteobacteria (*Candidatus Purcellia pentastirinorum*; a *Sodalis*-like bacterial symbiont; *Candidatus Baumannia cicadellinicola*), (iv) YLS (*Ophiocordyceps*, *Entomomyces delphacidicola*); and (v) companion symbionts absent. For the diet variable, each genus was assigned as phloem-feeder, xylem-feeder or parenchyma cell-feeder. Insects within the Fulgoromorpha, Membracidae and Deltocephalinae were inferred as phloem-feeders, and within the Cicadoidea, Cercopoidea, Cicadellinae as xylem-feeders [44–48]. One study reported an absence of both primary and companion symbionts in sap-feeding Auchenorrhyncha [35]. Given the nutritionally highly unbalanced composition of plant sap [1], these cases probably represent false negatives and were therefore not included in our dataset.

### (c) Comparative analyses

All our comparative analyses were performed in R (v. 3.4.4.). The overlap of our full phylogeny containing 824 tips (genera), and our full trait database (162 genera) was equal to 145 genera. Of these, we had data on primary symbiont status for 142 genera: this is the dataset we included in our analyses (full analysed genus list is available in the electronic supplementary material, table S4). The full phylogeny was pruned to comprise the 142 tip genera. We first performed ASRs to elucidate the evolutionary history of our three traits of interest. We then compared correlated and uncorrelated models of evolution to study the potential for evolutionary correlations between traits [49].

For our ASRs of both diet (three levels) and companion symbiont association status (five levels), we fitted a model of evolution for categorical traits, using the R-package *corHMM* (v. 1.22) [50]. We generated equal rates (ER), symmetrical (SYM) and all-rates-different (ARD) models of evolution and used Akaike information criterion corrected for small sample size (AICc)-weights to guide our model selection. In our diet ASR, we treated diet state as missing for our outgroup. For our ASR of the primary symbiosis, we analysed hidden rates models, which allow for potential variation in the rate of evolution of a binary trait [50]. We used marginal likelihoods to estimate ancestral states and employed Yang’s method to determine the ancestral root state for diet and companion symbiosis [51] while constraining the root to primary symbiont presence.

As before, we calculated the number of transitions between evolutionary states assuming parsimony [13,52].

We used Pagel's method to study potential correlated evolution among binary traits of interest, specifically host diet and symbiotic association status [49]. Given that xylem is under negative pressure and is particularly nutrient poor, using it as a food source requires a highly specialized set of adaptations including an enlarged muscle-filled head to facilitate active pumping of the xylem sap [53]. We therefore analysed diet as a binary variable of xylem feeding versus other food sources (i.e. phloem or parenchyma feeding). For the companion symbiosis, we generated three binary variables, representing the presence or absence of the main types of companion symbionts (i.e.  $\beta$ -proteobacteria,  $\gamma$ -proteobacteria and YLS; we did not analyse  $\alpha$ -proteobacteria this way because they are found in only two genera). In all cases, we used R-package *phytools* (v. 0.6–44) [54] to compare correlated and uncorrelated models of evolution using likelihood ratio tests.

#### (d) Sensitivity

All results from phylogenetic comparative analyses are subject to uncertainty in the underlying data [55]. We therefore characterized the sensitivity of our key result of correlated evolution among primary endosymbiosis and diet status to (i) phylogenetic, (ii) trait, and (iii) taxon sampling uncertainty. To quantify sensitivity to phylogenetic uncertainty, we regenerated our model across the hundred bootstrap replica that were used to obtain support for our ML phylogeny and characterized the *p*-value and  $\Delta$ -AICc for each rerun (electronic supplementary material, figure S6). To study the effects of trait uncertainty, we simulated trait dataset based on our original assignments, assuming separate false-positive and false-negative rates for our data of primary symbiont (*Sulcia*) presence (electronic supplementary material, figure S7). This allows us to simulate an unbiased but inaccurate dataset (both high false-positive and false-negative), as well as biases in the field towards detection of symbionts (high false-positive, low false-negative) or towards not finding symbionts which are actually there (high false-negative rate, low false-positive). Third, we tested if our key conclusions are robust to the specific genus set sampled (electronic supplementary material, figure S8). This helps address the potential for influential (groups of) genera driving the results. To do this, we used a jack-knifing approach, randomly removing up to 30% of the genera from the analyses [55].

### 3. Results

#### (a) Ancestral state reconstructions

In our first analysis of 142 genera of auchenorrhynchan insects that have both phylogenetic information and trait data, we investigated the evolutionary transitions in the diet. The evolutionary model with the best statistical support (electronic supplementary material, table S2) estimates xylem as the most likely ancestral state of the Auchenorrhyncha (likelihood of xylem-feeder: 90.1%; parenchyma-feeder 9.9%). In this model, xylem feeding is subsequently lost at the origin of the Fulgoromorpha (planthoppers), and five times within the Cicadomorpha (comprising leafhoppers, treehoppers, cicadas and spittlebugs) (figure 1; electronic supplementary material, figures S1 and S2). All diet switches are from xylem to phloem sap, apart from a single switch from xylem feeding to parenchyma feeding near the base of the Typhlocybae (Cicadomorpha: Cicadellidae). All instances of phloem feeding in the Auchenorrhyncha

appear to be an evolutionary end state, but the model predicts one further transition, from parenchyma feeding to phloem feeding in the Ledrinae (Cicadomorpha: Cicadellidae).

In the best-supported model for the primary symbiont *Sulcia*, the association is initially in a relatively unstable evolutionary state (electronic supplementary material, figures S3 and S4). Specifically, the symbiosis is lost five times (calculated 4.90 losses) across the Auchenorrhyncha but never regained (calculated 0.19 gains). Four of these losses occur predominantly within the Fulgoromorpha, with a single instance in the Cicadomorpha, in the Ledrinae. In the other lineages of the Cicadomorpha, *Sulcia* presence is retained, and transitions towards a stable evolutionary state (electronic supplementary material, figure S4). All losses occur in lineages that have switched from xylem to phloem or parenchyma feeding.

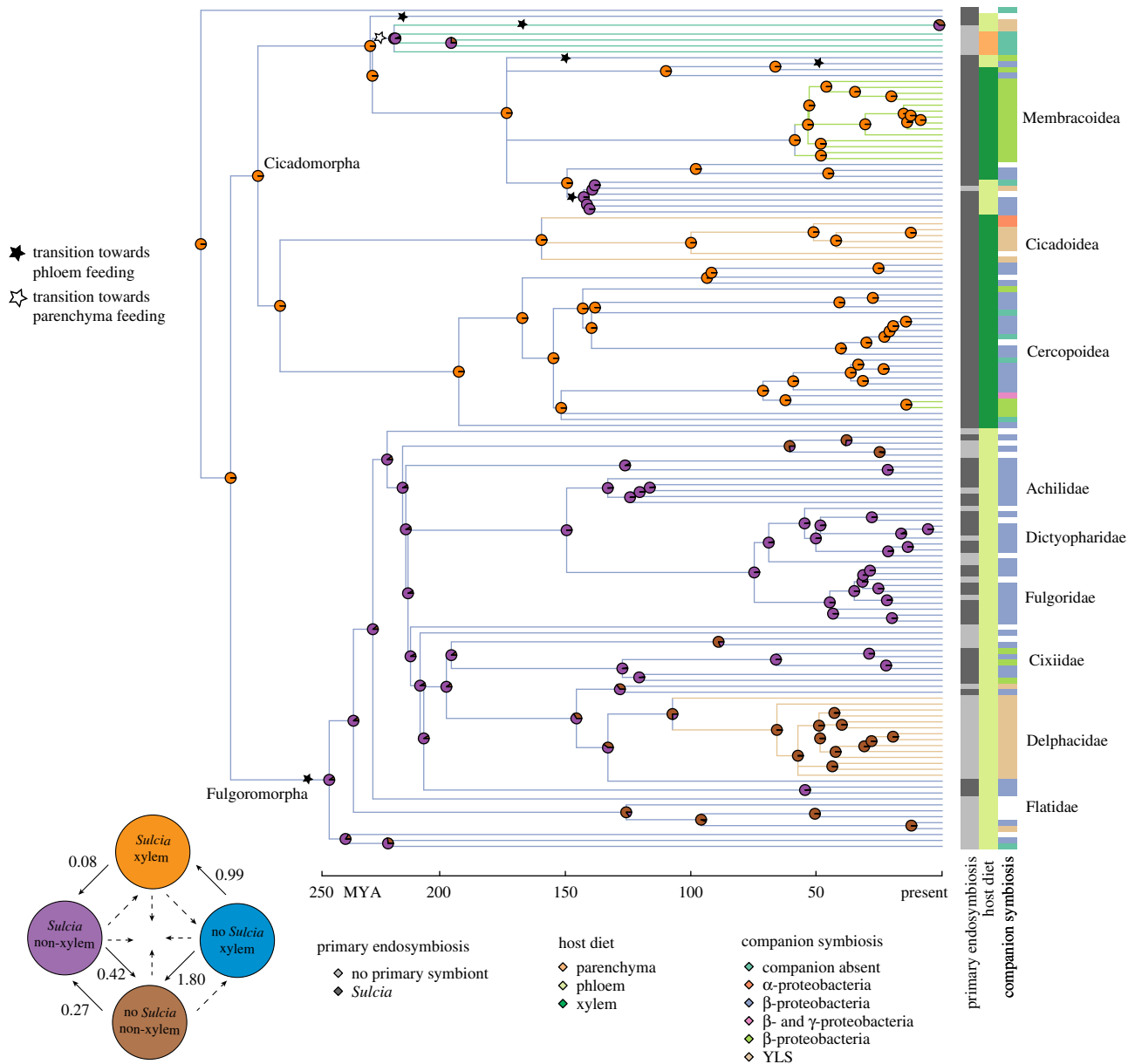
For the companion symbionts, the best-supported model is symmetrical, i.e. with equal transition rates between two states in both directions (electronic supplementary material, table S2). The model predicts that the Auchenorrhyncha was ancestrally associated with the  $\beta$ -Sym symbiont (likelihood  $\beta$ -Sym 97.1%; companion absence 2.9%; figure 1 and electronic supplementary material, figure S5), which has been retained in most Fulgoromorpha, as well as many Cercopoidea and Cicadellidae within the Cicadomorpha. In other lineages, however,  $\beta$ -Sym was not stable, with at least nine switches to alternative companion symbionts and a further five or six losses without replacement by a taxonomically different companion symbiont (figure 1). In contrast to the losses of the primary *Sulcia* symbiosis, these losses take place across all three diets observed in the Auchenorrhyncha.

#### (b) Correlated evolution

To evaluate the hypothesis that diet changes co-occur with changes in symbiont composition, we compared correlated and uncorrelated models of evolution. This analysis yielded strong evidence of correlated evolution of primary endosymbiont (*Sulcia*) status and diet (likelihood ratio test:  $p \ll 0.01$ ), but no statistically significant evidence of correlated evolution of diet with any group of companion symbionts ( $\beta$ -Sym,  $p = 0.49$ ),  $\gamma$ -proteobacteria,  $p = 0.06$ , YLS,  $p = 0.70$ ). Specifically, the primary symbiont *Sulcia* is lost exclusively in insects that have switched from feeding on xylem to consuming phloem or parenchyma (figure 1). The associated ancestral state reconstruction confirms that the loss of *Sulcia* is invariably preceded by loss of xylem feeding, generally by dozens of millions of years (and in one case by up to 185 Myr). Thus, loss of xylem feeding appears to be a required, but probably not sufficient, condition for *Sulcia* loss. In summary, these results indicate an indirect evolutionary link between a diet with loss of the *Sulcia* primary symbiont but not with changes of the companion symbiont.

#### (c) Sensitivity analyses

We evaluated the sensitivity of our correlated evolution results to phylogenetic, data and sampling uncertainty using a simulation approach [55]. We found that our key conclusions are robust to phylogenetic uncertainty (electronic supplementary material, figure S6). We also simulated errors in our underlying trait data and found that correlated evolution conclusions were robust even to 25% of our



**Figure 1.** Analysed phylogeny trait data and key ancestral state reconstructions of the Auchenorrhyncha. Vertical bands at the tips of the 142-genus phylogeny indicate—from left to right—primary endosymbiosis, status host diet and companion symbiosis status. In all bands, missing data (i.e. traits could not be estimated reliably) are represented in white. Branch colours indicate inferred companion symbiont status (full model shown in the electronic supplementary material, figure S5). Stars indicate the branch along which transitions from the ancestral xylem-feeding state towards either phloem feeding (filled stars) or parenchyma feeding (open star) are inferred to have occurred (full model in the electronic supplementary material, figures S1 and S2). The inset figure shows the model of correlated evolution among host diet (xylem versus non-xylem feeding) and primary endosymbiosis status (presence and absence) indicating transition rates between the four potential combinations of these two binary traits. To facilitate interpretation, transition rates are multiplied by hundred and can thus be interpreted as number of transitions per lineage per 100 million years. Transitions that are possible under the model but were inferred to be non-existent are indicated with dashed arrows. The corresponding ancestral state reconstruction is represented on the phylogeny by pie charts. From the ancestral state of feeding on xylem and associating with *Sulcia* (orange), primary symbiosis loss (transition towards brown) occurred five times and was always preceded by a diet shift away from xylem feeding (purple) sometimes tens of millions of years earlier.

underlying trait data being mistaken, including to biased over- or under-detection of symbioses (electronic supplementary material, figure S7). Lastly, we found that our key results are robust to variation in genus sampling (electronic supplementary material, figure S8).

## 4. Discussion

It has been argued in much of the symbiosis literature that evolutionary acquisition, loss or switching of microbial symbionts have been drivers of major evolutionary changes in

host traits, especially diets of animals [1,2,14,56–58]. Despite the seemingly close link between host diet and symbiont function in the Auchenorrhyncha, the correlations identified in this study provide limited support for this proposition. Although our finding of a perfect association between xylem feeding and retention of the primary symbiont *Sulcia* is consistent with the proposed relationship between symbiont and diet, two other findings of this study are inconsistent. First, we obtain no association between change or loss of companion symbionts and diet switching; both occur across all auchenorrhynchan diets. Second, the loss of

*Sulcia* in some phloem-feeding lineages occurs tens of millions of years after the dietary switch from xylem feeding (figure 1), suggesting that the change in diet is permissive for—and not a consequence of—symbiosis change.

We have also obtained strong statistical support for a xylem-feeding auchenorrhynchan ancestor. This conclusion contrasts with the hypothesis that xylem feeding evolved in the ancestor of the Cicadomorpha, proposed in a recent study [59] that was not based on a formal ancestral trait reconstruction of insect diet and contained only few Auchenorrhyncha species. Our analyses indicate multiple switches from xylem feeding to phloem- and parenchyma feeding, but no reversions back to a diet of xylem sap. Given that no other animal group is known to feed through the life cycle on xylem [60], we conclude that the ancestral auchenorrhynchan represents the sole evolutionary origin of the xylem-feeding habit in the animal kingdom.

This study has provided a quantitative phylogenetic framework for the many instances of symbiont gain, loss and switching reported for the Auchenorrhyncha in the literature [10,27]. In particular, our quantitative data validate the long-held belief that the xylem-feeding habit in the Auchenorrhyncha is perfectly correlated with the possession of bacterial symbionts [1] and confirm the inference from previous studies that the ancestral symbiosis comprised the primary symbiont *Sulcia* and companion symbiont  $\beta$ -Sym [22,27,28]. The retention of *Sulcia* in all xylem-feeding lineages, despite multiple switches of the companion symbiont, suggests that *Sulcia* has unique traits that permit xylem feeding. A possible explanation comes from recent metabolic modelling, which has revealed that *Sulcia* converts host-derived nitrogen sources into essential amino acids with very high efficiency [61]. This quantitative metabolic trait may be especially valuable for host use of xylem sap, which has a markedly lower total nitrogen content than phloem sap [60]. In other words, the fitness consequences of a symbiont switch from *Sulcia* to a less-efficient symbiont may be less severe for a phloem-feeding insect, thereby explaining how *Sulcia* has been replaced by other taxa in some phloem-feeding auchenorrhynchan lineages, but in no xylem-feeding lineages. Intriguingly, most replacements of *Sulcia* are evolutionarily rather ancient, yielding a pattern of increased stability of the *Sulcia* symbiosis over time (electronic supplementary material, figure S4). Further research is required to investigate whether other ancient symbionts display a similar pattern of increasing stabilization over time and to identify the contribution of metabolic and other co-evolved host–symbiont interactions to this trait.

What are the factors driving the many instances of symbiont loss and replacement that are not correlated with dietary switches in the Auchenorrhyncha? These losses may be mediated by ecological factors other than diet. For example, many insect symbionts are relatively intolerant of thermal stress [62], and the replacement of thermally intolerant symbionts by tolerant strains has been demonstrated in insects exposed to elevated temperatures in the laboratory [63]. Evolutionary or co-evolutionary processes internal to the symbiosis may also be involved. In particular, these symbionts are subject to genomic decay because obligate vertical transmission of small numbers of symbiont cells results in

inefficient selection against deleterious mutations and reduced symbiont functionality [64–66], favouring the replacement of a deteriorating symbiont by an alternative taxon [10,14,28]. The incidence of symbiont replacements may, however, be constrained by the high metabolic cost of maintaining a symbiont of large genome size [61] or by traits of the incoming symbiont that may be deleterious to the host [33].

Is the poor correspondence between evolutionary transitions in symbiont identity and host diet in the Auchenorrhyncha generalizable to other symbioses? A key feature of this system is that the symbiont services to the host relate to insect nutrition, involving the provisioning of essential amino acids and vitamins, and are broadly equivalent for insects feeding on xylem and phloem sap [67]. We predict that, as for the Auchenorrhyncha, the many instances of symbiont switches in other hemipteran groups with nutritional symbioses [10,14] are largely uncoupled to diet-related factors. Symbiont switches in aphids of the subfamily Lachninae (Hemiptera: suborder Sternorrhyncha) are fully consistent with this prediction [68]. Future studies on the patterns of symbiosis switches across larger phylogenetic scales in hemipterans other than the Auchenorrhyncha, as well as in other animal groups with nutritional symbioses, would provide valuable insights into this topic. We hypothesize that the evolutionary co-incidence of symbiont switches and shifts in ecologically important traits of the host may be more evident for protective functions, e.g. symbionts that either produce toxins which confer resistance to natural enemies or detoxify dietary allelochemicals [3,69]. Here, acquisition of a symbiont capable of synthesizing or degrading novel toxins could facilitate the exploitation of novel habitats or diets, potentially with consequences for evolutionary patterns of speciation and adaptive diversification in the host lineage. Other future research could check for symbiont switching between closely related taxa using phylogenomic analysis to test for incongruencies between phylogenies of hosts and both primary and companion endosymbionts [22]. These hypotheses are increasingly becoming testable owing to (i) the routine availability of molecular tools for phylogenetics and symbiont identification, and (ii) development of sophisticated comparative methods to test for large-scale patterns in the relationships between symbiont switches and host divergence and trait evolution.

**Data accessibility.** Our full analysed insect trait database, phylogeny and alignment files, sequence accession table and all R-code to repeat our analyses and generate figures are available on GitHub ([https://github.com/gijsbertwerner/aucho\\_endosymbionts](https://github.com/gijsbertwerner/aucho_endosymbionts)) and from the Dryad Digital Repository: <https://doi.org/10.5061/dryad.95p761k> [70].

**Authors' contributions.** L.B.-R., A.E.D. and G.D.A.W. designed the study, L.B.-R. and G.D.A.W. compiled the database, generated the phylogeny and performed the comparative analyses. G.D.A.W. and A.E.D. wrote the manuscript, and all authors commented on the manuscript.

**Competing interests.** We declare no competing interests.

**Funding.** This research was funded by a Royal Society Newton International Fellowship and a Junior Research Fellowship (Balliol College Oxford) to G.D.A.W. and by NSF grant no. IOS-1354743 to A.E.D.

**Acknowledgements.** We thank Julie Urban for advice and assistance with producing the phylogeny, and two anonymous reviewers for their useful and constructive feedback.

- Buchner P. 1965 *Endosymbiosis of animals with plant microorganisms*. New York, NY: John Wiley & Sons.
- Douglas AE. 2010 *The symbiotic habit*. Princeton, NJ: Princeton University Press.
- Flórez LV, Biedermann PHW, Engl T, Kaltenpoth M. 2015 Defensive symbioses of animals with prokaryotic and eukaryotic microorganisms. *Nat. Prod. Rep.* **32**, 904–936. (doi:10.1039/c5np00010f)
- Douglas AE. 2009 The microbial dimension in insect nutritional ecology. *Funct. Ecol.* **23**, 38–47. (doi:10.1111/j.1365-2435.2008.01442.x)
- Bright M, Bulgheresi S. 2010 A complex journey: transmission of microbial symbionts. *Nat. Rev. Microbiol.* **8**, 218–230. (doi:10.1038/nrmicro2262)
- Moran NA, Munson MA, Baumann P, Ishikawa H. 1993 A molecular clock in endosymbiotic bacteria is calibrated using the insect hosts. *Proc. R. Soc. Lond. B* **253**, 167–171. (doi:10.1098/rspb.1993.0098)
- Cafaro MJ *et al.* 2011 Specificity in the symbiotic association between fungus-growing ants and protective *Pseudonocardia* bacteria. *Proc. R. Soc. B* **278**, 1814–1822. (doi:10.1098/rspb.2010.2118)
- Manzano-Marín A, Szabó G, Simon J-C, Horn M, Latorre A. 2017 Happens in the best of subfamilies: establishment and repeated replacements of co-obligate secondary endosymbionts within *Lachninae* aphids. *Environ. Microbiol.* **19**, 393–408. (doi:10.1111/1462-2920.13633)
- Toju H, Tanabe AS, Notsu Y, Sota T, Fukatsu T. 2013 Diversification of endosymbiosis: replacements, co-speciation and promiscuity of bacteriocyte symbionts in weevils. *ISME J.* **7**, 1378–1390. (doi:10.1038/ismej.2013.27)
- Douglas AE. 2016 How multi-partner endosymbioses function. *Nat. Rev. Microbiol.* **14**, 731–743. (doi:10.1038/nrmicro.2016.151)
- Ozawa G, Shimamura S, Takaki Y, Takishita K, Ikuta T, Barry JP, Maruyama T, Fujikura K, Yoshida T. 2017 Ancient occasional host switching of maternally transmitted bacterial symbionts of chemosynthetic vesicomyid clams. *Genome Biol. Evol.* **9**, 2226–2236. (doi:10.1093/gbe/evx166)
- Lefèvre C, Charles H, Vallier A, Delobel B, Farrell B, Heddi A. 2004 Endosymbiont phylogenesis in the dryophthoridae weevils: evidence for bacterial replacement. *Mol. Biol. Evol.* **21**, 965–973. (doi:10.1093/molbev/msh063)
- Werner GDA, Cornelissen JHC, Cornwell WK, Soudzilovskaia NA, Kattge J, West SA, Kiers ET. 2018 Symbiont switching and alternative resource acquisition strategies drive mutualism breakdown. *Proc. Natl Acad. Sci. USA* **115**, 5229–5234. (doi:10.1073/pnas.1721629115)
- Sudakaran S, Kost C, Kaltenpoth M. 2017 Symbiont acquisition and replacement as a source of ecological innovation. *Trends Microbiol.* **25**, 375–390. (doi:10.1016/j.tim.2017.02.014)
- Sudakaran S, Retz F, Kikuchi Y, Kost C, Kaltenpoth M. 2015 Evolutionary transition in symbiotic syndromes enabled diversification of phytophagous insects on an imbalanced diet. *ISME J.* **9**, 1–18. (doi:10.1038/ismej.2015.75)
- Joy JB. 2013 Symbiosis catalyses niche expansion and diversification. *Proc. R. Soc. B* **280**, 20122820. (doi:10.1098/rspb.2012.2820)
- Garamszegi LZ (ed.). 2014 *Modern phylogenetic comparative methods and their application in evolutionary biology*. Berlin, Germany: Springer.
- Douglas AE. 1998 Nutritional interactions in insect-microbial symbioses: aphids and their symbiotic bacteria Buchnera. *Annu. Rev. Entomol.* **43**, 17–37. (doi:10.1146/annurev.ento.43.1.17)
- Dolling WR. 1991 *The hemiptera*. London, UK: The Natural History Museum Publications.
- Cryan JR, Urban JM. 2012 Higher-level phylogeny of the insect order Hemiptera: is Auchenorrhyncha really paraphyletic? *Syst. Entomol.* **37**, 7–21. (doi:10.1111/j.1365-3113.2011.00611.x)
- Li H, Leavengood JM, Chapman EG, Burkhardt D, Song F, Jiang P, Liu J, Zhou X, Cai W. 2017 Mitochondrial phylogenomics of Hemiptera reveals adaptive innovations driving the diversification of true bugs. *Proc. R. Soc. B* **284**, 20171223. (doi:10.1098/rspb.2017.1223)
- Moran NA, Tran P, Gerardo NM. 2005 Symbiosis and insect diversification: an ancient symbiont of sap-feeding insects from the bacterial phylum Bacteroidetes. *Appl. Environ. Microbiol.* **71**, 8802–8810. (doi:10.1128/AEM.71.12.8802-8810.2005)
- Bennett GM, Moran NA. 2013 Small smaller smallest: the origins and evolution of ancient dual symbioses in a phloem-feeding insect. *Genome Biol. Evol.* **5**, 1675–1688. (doi:10.1093/gbe/evt118)
- Gonella E *et al.* 2011 Bacterial endosymbiont localization in *Hyalesthes obsoletus* the insect vector of Bois Noir in *Vitis vinifera*. *Appl. Environ. Microbiol.* **77**, 1423–1435. (doi:10.1128/AEM.02121-10)
- McCutcheon JP, Moran NA. 2010 Functional convergence in reduced genomes of bacterial symbionts spanning 200 My of evolution. *Genome Biol. Evol.* **2**, 708–718. (doi:10.1093/gbe/evq055)
- Noda H, Watanabe K, Kawai S, Yukuhiro F, Miyoshi T, Tomizawa M, Koizumi Y, Nikoh N, Fukatsu T. 2012 Bacteriome-associated endosymbionts of the green rice leafhopper *Nephotettix cincticeps* (Hemiptera: Cicadellidae). *Appl. Entomol. Zool.* **47**, 217–225. (doi:10.1007/s13355-012-0110-1)
- Muller HJ. 1962 Neuere vorstellungen über verbreitung und phylogenie der endosymbiosen der zikaden. *Zeitschrift für Morphol. und oekologie der Tiere* **51**, 190–210. (doi:10.1007/BF00409635)
- Koga R, Bennett GM, Cryan JR, Moran NA. 2013 Evolutionary replacement of obligate symbionts in an ancient and diverse insect lineage. *Environ. Microbiol.* **15**, 2073–2081. (doi:10.1111/1462-2920.12121)
- Mao M, Yang X, Poff K, Bennett G. 2017 Comparative genomics of the dual-obligate symbionts from the treehopper *Entylia carinata* (Hemiptera: Membracidae) provide insight into the origins and evolution of an ancient symbiosis. *Genome Biol. Evol.* **9**, 1803–1815. (doi:10.1093/gbe/evx134)
- McCutcheon JP, McDonald BR, Moran NA. 2009 Origin of an alternative genetic code in the extremely small and GC-rich genome of a bacterial symbiont. *PLoS Genet.* **5**, e1000565. (doi:10.1371/journal.pgen.1000565)
- McCutcheon JP, Moran NA. 2007 Parallel genomic evolution and metabolic interdependence in an ancient symbiosis. *Proc. Natl Acad. Sci. USA* **104**, 19392–19397. (doi:10.1073/pnas.0708855104)
- Kobialka M, Michalik A, Walczak M, Szklarzewicz T. 2018 Dual 'bacterial-fungal' symbiosis in Deltocephalinae leafhoppers (Insecta Hemiptera Cicadomorpha: Cicadellidae). *Microb. Ecol.* **75**, 771–782. (doi:10.1007/s00248-017-1075-y)
- Matsuura Y, Moriyama M, Łukasik P, Vanderpool D, Tanahashi M, Meng X-Y, McCutcheon JP, Fukatsu T. 2018 Recurrent symbiont recruitment from fungal parasites in cicadas. *Proc. Natl Acad. Sci. USA* **115**, E5970–E5979. (doi:10.1073/pnas.1803245115)
- Noda H, Nakashima N, Koizumi M. 1995 Phylogenetic position of yeast-like symbiotes of rice planthoppers based on partial 18S rDNA sequences. *Insect Biochem. Mol. Biol.* **25**, 639–646. (doi:10.1016/0965-1748(94)00107-5)
- Urban JM, Cryan JR. 2012 Two ancient bacterial endosymbionts have coevolved with the planthoppers (Insecta: Hemiptera: Fulgoroidea). *BMC Evol. Biol.* **12**, 87. (doi:10.1186/1471-2148-12-87)
- de Queiroz A, Gatesy J. 2007 The supermatrix approach to systematics. *Trends Ecol. Evol.* **22**, 34–41. (doi:10.1016/j.tree.2006.10.002)
- Cryan JR. 2005 Molecular phylogeny of Cicadomorpha (Insecta: Hemiptera: Cicadoidea Cercopoidea and Membracoidea): adding evidence to the controversy. *Syst. Entomol.* **30**, 563–574. (doi:10.1111/j.1365-3113.2004.00285.x)
- Urban JM, Cryan JR. 2009 Entomologically famous evolutionarily unexplored: the first phylogeny of the lanternfly family Fulgoridae (Insecta: Hemiptera: Fulgoroidea). *Mol. Phylogenet. Evol.* **50**, 471–484. (doi:10.1016/j.ympev.2008.12.004)
- Pearse WD, Purvis A. 2013 phyloGenerator: an automated phylogeny generation tool for ecologists. *Methods Ecol. Evol.* **4**, 692–698. (doi:10.1111/2041-210X.12055)
- Katoh K, Standley DM. 2013 MAFFT multiple sequence alignment software version 7: improvements in performance and usability. *Mol. Biol. Evol.* **30**, 772–780. (doi:10.1093/molbev/mst010)
- Larsson A. 2014 AliView: a fast and lightweight alignment viewer and editor for large datasets. *Bioinformatics* **30**, 3276–3278. (doi:10.1093/bioinformatics/btu531)

42. Stamatakis A. 2014 RAxML version 8: a tool for phylogenetic analysis and post-analysis of large phylogenies. *Bioinformatics* **30**, 1312–1313. (doi:10.1093/bioinformatics/btu033)
43. Sanderson MJ. 2003 r8s: inferring absolute rates of molecular evolution and divergence times in the absence of a molecular clock. *Bioinformatics* **19**, 301–302. (doi:10.1093/bioinformatics/19.2.301)
44. Zahniser JN, Dietrich CH. 2010 Phylogeny of the leafhopper subfamily Deltocephalinae (Hemiptera: Cicadellidae) based on molecular and morphological data with a revised family-group classification. *Syst. Entomol.* **35**, 489–511. (doi:10.1111/j.1365-3113.2010.00522.x)
45. Redak RA, Purcell AH, Lopes JRS, Blua MJ, Mizell III RF, Andersen PC. 2004 The biology of xylem fluid-feeding insect vectors of *Xylella fastidiosa* and their relation to disease epidemiology. *Annu. Rev. Entomol.* **49**, 243–270. (doi:10.1146/annurev.ento.49.061802.123403)
46. Dietrich C. 2003 Auchenorrhyncha (cicadas spittlebugs leafhoppers treehoppers and planthoppers). In *Encyclopedia of insects*, pp. 66–74. New York, NY: Academic Press.
47. Young DA. 1968 Taxonomic study of the Cicadellinae (Homoptera: Cicadellidae) pt. 1: Proconiini. *Bull. U.S. Natl Mus.* **261**, 1–287. (doi:10.5479/si.03629236.261.1)
48. Cryan JR, Svenson GJ. 2010 Family-level relationships of the spittlebugs and froghoppers (Hemiptera: Cicadomorpha: Cercopoidea). *Syst. Entomol.* **35**, 393–415. (doi:10.1111/j.1365-3113.2009.00520.x)
49. Pagel M. 1994 Detecting correlated evolution on phylogenies: a general method for the comparative analysis of discrete characters. *Proc. R. Soc. Lond. B* **255**, 37–45. (doi:10.1098/rspb.1994.0006)
50. Beaulieu JM, O'Meara BC, Donoghue MJ. 2013 Identifying hidden rate changes in the evolution of a binary morphological character: the evolution of plant habit in campanulid angiosperms. *Syst. Biol.* **62**, 725–737. (doi:10.1093/sysbio/syt034)
51. Yang Z. 2006 *Computational molecular evolution*. Oxford, UK: Oxford University Press.
52. Werner GDA, Cornwell WK, Sprent J, Kattge J, Kiers ET. 2014 A single evolutionary innovation drives the deep evolution of symbiotic N<sub>2</sub>-fixation in angiosperms. *Nat. Commun.* **5**, 4087. (doi:10.1038/ncomms5087)
53. Novotny V, Wilson MR. 1997 Why are there no small species among xylem-sucking insects? *Evol. Ecol.* **11**, 419–437. (doi:10.1023/A:1018432807165)
54. Revell LJ. 2012 phytools: an R package for phylogenetic comparative biology (and other things). *Methods Ecol. Evol.* **3**, 217–223. (doi:10.1111/j.2041-210X.2011.00169.x)
55. Paterno GB, Penone C, Werner GDA. 2018 sensiPhy: an r-package for sensitivity analysis in phylogenetic comparative methods. *Methods Ecol. Evol.* **9**, 1461–1467. (doi:10.1111/2041-210X.12990)
56. Hansen AK, Moran NA. 2014 The impact of microbial symbionts on host plant utilization by herbivorous insects. *Mol. Ecol.* **23**, 1473–1496. (doi:10.1111/mec.12421)
57. Rolshausen G Dal Grande F Sadowska-Deś AD Otte J Schmitt I. 2018 Quantifying the climatic niche of symbiont partners in a lichen symbiosis indicates mutualist-mediated niche expansions. *Ecography (Cop.)* **41**, 1380–1392. (doi:10.1111/ecog.03457)
58. McFall-Ngai M *et al.* 2013 Animals in a bacterial world a new imperative for the life sciences. *Proc. Natl Acad. Sci. USA* **110**, 3229–3236. (doi:10.1073/pnas.1218525110)
59. Johnson KP *et al.* 2018 Phylogenomics and the evolution of hemipteroid insects. *Proc. Natl Acad. Sci. USA* **115**, 12 775–12 780. (doi:10.1073/pnas.1815820115)
60. Raven JA. 1983 Phytophages of xylem and phloem: a comparison of animal and plant sap-feeders. *Adv. Ecol. Res.* **13**, 135–234. (doi:10.1016/S0065-2504(08)60109-9)
61. Ankrah NYD, Chouaia B, Douglas AE. 2018 The cost of metabolic interactions in symbioses between insects and bacteria with reduced genomes. *MBio* **9**, 1–15. (doi:10.1128/mBio.01433-18)
62. Wernegreen JJ. 2012 Mutualism meltdown in insects: bacteria constrain thermal adaptation. *Curr. Opin. Microbiol.* **15**, 255–262. (doi:10.1016/j.mib.2012.02.001)
63. Moran NA, Yun Y. 2015 Experimental replacement of an obligate insect symbiont. *Proc. Natl Acad. Sci. USA* **112**, 2093–2096. (doi:10.1073/pnas.1420037112)
64. Bennett GM, Moran NA. 2015 Heritable symbiosis: the advantages and perils of an evolutionary rabbit hole. *Proc. Natl Acad. Sci. USA* **112**, 10 169–10 176. (doi:10.1073/pnas.1421388112)
65. Campbell MA, Łukasik P, Simon C, McCutcheon JP. 2017 Idiosyncratic genome degradation in a bacterial endosymbiont of periodical cicadas. *Curr. Biol.* **27**, 3568–3575.e3. (doi:10.1016/j.cub.2017.10.008)
66. Moran NA. 1996 Accelerated evolution and Muller's ratchet in endosymbiotic bacteria. *Proc. Natl Acad. Sci. USA* **93**, 2873–2878. (doi:10.1073/pnas.93.7.2873)
67. Douglas AE. 2015 Multiorganismal insects: diversity and function of resident microorganisms. *Annu. Rev. Entomol.* **60**, 17–34. (doi:10.1146/annurev-ento-010814-020822)
68. Meseguer AS, Manzano-Marín A, Coeur d'acier A, Clamens A-L, Godefroid M, Jouselin E. 2017 Buchnera has changed flatmate but the repeated replacement of co-obligate symbionts is not associated with the ecological expansions of their aphid hosts. *Mol. Ecol.* **26**, 2363–2378. (doi:10.1111/mec.13910)
69. van den Bosch TJM, Welte CU. 2017 Detoxifying symbionts in agriculturally important pest insects. *Microb. Biotechnol.* **10**, 531–540. (doi:10.1111/1751-7915.12483)
70. Bell-Roberts L, Douglas AE, Werner GDA. 2019 Data from: Match and mismatch between dietary switches and microbial partners in plant sap-feeding insects. Dryad Digital Repository. (<https://doi.org/10.5061/dryad.95p761k>)