



Published in final edited form as:

Processes (Basel). 2018 August ; 6(8): . doi:10.3390/pr6080115.

Modeling the Dynamics of Human Liver Failure Post Liver Resection

Babita K. Verma^{1,2}, Pushpavanam Subramaniam², and Rajanikanth Vadigepalli^{1,*}

¹Daniel Baugh Institute for Functional Genomics/Computational Biology, Department of Pathology, Anatomy and Cell Biology, Thomas Jefferson University, Philadelphia, PA 19107, USA;

²Department of Chemical Engineering, Indian Institute of Technology-Madras, Chennai 600036, India;

Abstract

Liver resection is an important clinical intervention to treat liver disease. Following liver resection, patients exhibit a wide range of outcomes including normal recovery, suppressed recovery, or liver failure, depending on the regenerative capacity of the remnant liver. The objective of this work is to study the distinct patient outcomes post hepatectomy and determine the processes that are accountable for liver failure. Our model based approach shows that cell death is one of the important processes but not the sole controlling process responsible for liver failure. Additionally, our simulations showed wide variation in the timescale of liver failure that is consistent with the clinically observed timescales of post hepatectomy liver failure scenarios. Liver failure can take place either instantaneously or after a certain delay. We analyzed a virtual patient cohort and concluded that remnant liver fraction is a key regulator of the timescale of liver failure, with higher remnant liver fraction leading to longer time delay prior to failure. Our results suggest that, for a given remnant liver fraction, modulating a combination of cell death controlling parameters and metabolic load may help shift the clinical outcome away from post hepatectomy liver failure towards normal recovery.

Keywords

liver regeneration; liver failure; liver resection; virtual patient; dynamic modeling; cell death

*Correspondence: rajanikanth.vadigepalli@jefferson.edu; Tel.: +1-215-955-0576.

Author Contributions: R.V. and B.K.V. conceived and designed the in silico experiments; B.K.V. performed the in silico experiments; B.K.V., P.S. and R.V. analyzed the simulation data; B.K.V., P.S. and R.V. wrote the paper.

Supplementary Materials: The following are available online at <http://www.mdpi.com/2227-9717/6/8/115/s1>, File S1: Matlab code for classification and analysis of virtual patient cohort response modes. (.m 16 KB), File S2: Matlab code for parameter optimization for liver failure scenario using elastic net technique. (.m 11 KB), File S3: SBML model containing an independent implementation of the network model and model equations in the Methods (.xml 102 KB), Figure S1: SBGN diagram for the liver regeneration model (.pdf 522 KB), Figure S2: Parameter space of the three controlling parameters showing the distribution of virtual patients across different response modes for a 10% resection scenario (.fig 455 KB), Figure S3: Parameter space of the three controlling parameters showing the distribution of virtual patients across different response modes for a 33.3% resection scenario (.fig 454 KB), Video S1: Parameter space of the three controlling parameters showing the distribution of virtual patients across different response modes for a 10% resection (.mp4 9.98 MB), Video S2: Parameter space of the three controlling parameters showing the distribution of virtual patients across different response modes for a 33.3% resection (.mp4 10 MB)

Conflicts of Interest: The authors declare no conflict of interest. The funding sponsors had no role in the design of the study; in the collection, analyses, or interpretation of data; in the writing of the manuscript and in the decision to publish the results.

1. Introduction

Liver regeneration is a unique repair mechanism underlying physiological recovery following hepatic injury and enables surgical treatment as a viable clinical intervention into liver disease, small for size liver transplant and live donor liver transplantation. The process of liver regeneration takes place via hyperplasia and hypertrophy of hepatocytes as well as other liver resident cell types to reconstitute the liver morphology and function. In this process, the liver parenchymal cells, that is, differentiated post-mitotic hepatocytes, respond to signals from non-parenchymal cells that are stimulated by the hepatic injury and re-enter cell cycle, leading to multiple rounds of cell proliferation, thus compensating for the lost tissue mass [1–3].

Liver resection is widely performed for hepatocellular carcinoma (HCC), metastatic colorectal cancer and benign liver disease [4]. Liver response to resection is also relevant in live donors for liver transplantation, where the remnant liver in the donor needs to regenerate after removal of a portion of the liver for transplantation in the recipient. Advances in surgical techniques and expertise, careful patient selection and post-operative patient care have resulted in better clinical outcomes in the recent years [5]. However, Post hepatectomy liver failure (PHLF) is not uncommon due to a variety of risk factors, including patient-based factors such as age, weight, diabetes [6,7]. Preexisting liver disease such as cirrhosis, cholestasis, steatosis result in impaired liver regeneration [8].

Surgery related factors such as excessive blood loss, portal vein hypertension, ischemia-reperfusion injury and sepsis can result in liver failure. One of the most important factor that determines PHLF is how much liver can be resected which depends on the functional capacity of the remnant liver fraction. The percentage of liver failure post hepatectomy lies in the range of 0.7 to 9.1% [9]. To improve the outcome post-surgery, it is important to be able to predict the liver regeneration response based on patients' pre- and post-operative assessment. Mathematical modeling of liver regeneration can play a significant role in predicting the potential for PHLF prior to the surgical intervention, thus enabling consideration of alternative interventions to prevent or reduce chances of PHLF.

In this study, we started with our previously developed computational model of liver regeneration [10] and fine-tuned the parameters based on liver volumetric data from patients that underwent liver resection [11]. The main objective of this work is to model the dynamics of the liver failure scenario following a surgical resection. We focused on the model parameters that control the cell death process and generated a virtual patient cohort by sampling across the parameter space involving metabolic load and cell death sensitivity. We employed these virtual patients to analyze different modes of potential response; normal recovery, suppressed recovery and liver failure. Our simulations revealed wide variation in the timescale of liver failure consistent with the range of observed timescales in human PHLF scenarios. Simulations indicate that liver failure can either happen instantaneously or after a varying delay. We analyzed the distribution of this delay in a virtual patient cohort and found that the remnant liver fraction plays a significant role in controlling the time of delay in liver failure cases. Specifically, our simulations suggest that lower remnant liver fraction can lead to faster timescale of failure, depending on a balance of a subset of intrinsic

parameters. We analyzed the effect of these controlling parameters corresponding to the metabolic load and cell death sensitivities on the overall cell death post resection. Our results suggest that specific combinations of these parameters can lead to a reasonable match to the clinically observed timescales of PHLF.

2. Materials and Methods

2.1. Mathematical Model

The mechanism of liver regeneration involves increase in portal pressure and production of cytokines from the Kupffer cells (resident macrophages in the liver). The cytokines activate the hepatocytes resulting in the priming and initiation of hypertrophy of the cells. Once the hepatocytes are primed they become responsive to the growth factor released from extracellular matrix via the action of matrix metalloproteinases (MMPs), as a consequence of which the parenchymal cells advance into the cell cycle and replicate leading to hyperplasia. The mathematical model (Cook et al. [10]) considered for this work incorporates the above-mentioned processes using eleven ordinary differential equations representing the hepatocytes in the three phases of the cell cycle quiescent (Q), priming (P) and replicating (R) states. The model comprises of seven equations for the molecular regulation, three equations for the cell state balances and the last equation accounts for relative cell mass growth, that is, hypertrophy. The system of equations is considered lumped since we assume the process of regeneration to be homogeneous in the remaining liver mass. The model equations are:

$$\frac{dQ}{dt} = -k_{QP}([IE] - [IE_0])Q + k_{RQ}[ECM]R + k_{req}\sigma_{req}P - k_{cd}\sigma_{cd}Q \quad (1)$$

$$\frac{dP}{dt} = k_{QP}([IE] - [IE_0])Q - k_{PR}([GF] - [GF_0])P - k_{req}\sigma_{req}P - k_{cd}\sigma_{cd}P \quad (2)$$

$$\frac{dR}{dt} = k_{PR}([GF] - [GF_0])P - k_{RQ}[ECM]R + k_{prot}R - k_{cd}\sigma_{cd}R \quad (3)$$

$$\frac{d[IL6]}{dt} = k_{IL6}\frac{M}{N + \varepsilon} - \frac{V_{JAK}[IL6]}{[IL6] + K_M^{JAK}} - \kappa_{IL6}[IL6] + k_1 \quad (4)$$

$$\frac{d[JAK]}{dt} = \frac{V_{JAK}[IL6]}{[IL6] + K_M^{JAK}} - \kappa_{JAK}[JAK] + k_2 \quad (5)$$

$$\frac{d[STAT3]}{dt} = \frac{V_{ST3}[JAK][proSTAT3]^2}{[proSTAT3]^2 + K_M^{ST3}(1 + [SOCS3]/K_I^{SOCS3})} - \frac{V_{IE}[STAT3]}{[STAT3] + K_M^{IE}} - \frac{V_{SOCS3}[STAT3]}{[STAT3] + K_M^{SOCS3}} - \kappa_{ST3}[STAT3] + k_3 \quad (6)$$

$$\frac{d[SOCS3]}{dt} = \frac{V_{SOCS3}[STAT3]}{[STAT3] + K_M^{SOCS3}} - \kappa_{SOCS3}[SOCS3] + k_4 \quad (7)$$

$$\frac{d[IE]}{dt} = \frac{V_{IE}[STAT3]}{[STAT3] + K_M^{IE}} - \kappa_{IE}[IE] + k_5 \quad (8)$$

$$\frac{d[GF]}{dt} = k_{GF} \frac{M}{N + \varepsilon} - k_{up}[GF][ECM] - \kappa_{GF}[GF] + k_7 \quad (9)$$

$$\frac{d[ECM]}{dt} = -k_{deg}[IL6][ECM] - \kappa_{ECM}[ECM] + k_6 \quad (10)$$

$$\frac{dG}{dt} = k_G \left(\frac{M}{N + \varepsilon} \right) - k_G M \quad (11)$$

Where,

$$\varepsilon = 0.01 \quad (12)$$

$$\sigma_{cd} = 0.5 \left(1 + \tanh \left(\frac{\theta_{cd} - (N + \varepsilon)/M}{\beta_{cd}} \right) \right) \quad (13)$$

$$\sigma_{req} = 0.5 \left(1 + \tanh \left(\frac{\theta_{req} - [GF]}{\beta_{req}} \right) \right) \quad (14)$$

$$N = Q + G(P + R) \quad (15)$$

$$k_1 = \frac{V_{JAK}}{1 + K_M^{JAK}} - k_{IL6} \frac{M}{N_{SS} + \varepsilon} + \kappa_{IL6} \quad (16)$$

$$k_2 = \kappa_{JAK} - \frac{V_{JAK}}{1 + K_M^{JAK}} \quad (17)$$

$$k_3 = -\frac{V_{STAT3} [proSTAT3]^2}{[proSTAT3]^2 + K_M^{STAT3} (1 + 1/K_I^{SOCS3})} + \frac{V_{IE}}{1 + K_M^{IE}} + \frac{V_{SOCS3}}{1 + K_M^{SOCS3}} + \kappa_{STAT3} \quad (18)$$

$$k_4 = -\frac{V_{SOCS3}}{1 + K_M^{SOCS3}} + \kappa_{SOCS3} \quad (19)$$

$$k_5 = -\frac{V_{IE}}{1 + K_M^{IE}} + \kappa_{IE} \quad (20)$$

$$k_6 = k_{deg} + \kappa_{ECM} \quad (21)$$

$$k_7 = -k_{GF} \frac{M}{N_{SS} + \varepsilon} + k_{up} + \kappa_{GF} \quad (22)$$

$$N_{SS} = 0.99 \quad (23)$$

Here, $k_1 \dots k_7$ are constants defined such that the molecular species are at steady state under the normal functioning of the liver. The initial conditions for solving the above-mentioned system of equations are:

$$\begin{aligned} Q_0 &= \text{remnant liver fraction}; P_0 = 0; R_0 = 0 & (24) \\ [IL6_0] &= 1; [JAK_0] = 1; [STAT3_0] = 1; [SOCS3_0] = 1; \\ [IE_0] &= 1; [GF_0] = 1; [ECM_0] = 1 \\ G_0 &= 1 \\ N_0 &= Q_0 + G_0(P_0 + R_0) = Q_0 \end{aligned}$$

The system of equations for this model are stiff and were solved in Matlab using *ode15s*. The initial conditions for the quiescent state and molecular species signify the steady state under normal functioning of liver in which both primed and replicating cells are at zero levels.

2.2. Defining Virtual Patient Cohort

We employed the emerging approach of simulating a cohort of virtual patients [12,13] to assess the distribution of potential responses, in an attempt to account for the clinically observed wide variation of outcomes. In the present study, the virtual patients were defined based on sampling key parameters within a range of 2X, 3.125X and 7X, respectively, from the nominal values for the three controlling parameters (M , β_{cd} , θ_{cd}). The sampling was performed in an unbiased approach to span the full range of the three-dimensional volume using Sobol sampling [14,15] to generate a cohort of 9000 virtual patients. The range of the controlling parameters were so chosen to capture the different response modes in the cohort of virtual patients under study.

2.3. Identification of Distinct Response Modes

The simulated results were classified into distinct response modes based on the level of liver mass fraction at the end of 2.5 years post liver resection—Normal recovery: 0.9–1.1, Suppressed recovery: <0.8. Patients are classified as exhibiting a liver failure scenario if the liver mass fraction dropped below 0.1 by 2.5 years post liver resection. The liver failure cases were further classified as exhibiting delayed failure or immediate failure based on the time taken to undergo failure. Immediate liver failure was deemed as occurring if the liver mass fraction is below 0.1 within the 5th day post resection and the remaining liver failure cases were classified as corresponding to the delayed failure scenarios.

2.4. Parameter Optimization

All the 33 parameters of the model (Table A1) were optimized using *fmincon* in Matlab using the elastic net approach with the regularization weightage of 0.001 for both Ridge and Lasso [16,17]. We explored the effect of using different regularization weights over a wide range from 0.0001 to 0.1. However, some of the regularization weights resulted in an integration error or terminated with a premature solution for a subset of the patients. Following this approach resulted in patient-specific regularization weights and thus likely

yielded an overfitted model in some cases. We found that the regularization weight of 0.001 worked for all the patients and thus avoided over-fitting of the model.

The liver fraction at any given time point at and post resection is calculated as the ratio of remnant liver volume to the total liver volume prior to resection, based on the volumetric data from Yamamoto et al. [11]. However, note that the present ODE model considers fractional liver mass and not volume, as we incorporated the tissue growth dynamics in the model. For the purpose of the study, we considered the liver volume fraction information from the clinical data set to be equivalent to the liver mass fraction calculated in the simulations, under a reasonable assumption that the density of the tissue does not alter significantly after resection. This also permits us to compare the response profiles across individual patients that may have wide variation in the liver size. The model dynamics are sensitive to the three controlling parameters; metabolic load (M) and cell death sensitivities (β_{cd} , θ_{cd}). The initial guess for the parameter optimization was considered from the parameter values of Cook et al. [10] for humans, except for the values of the three controlling parameters (M , θ_{cd} , β_{cd}). These values were fixed from a representative case of a virtual patient undergoing delayed liver failure (Table A2).

2.5. Clinical Dataset

The human liver volumetry dataset used for the present work was obtained from the published literature [11], which contains information about the liver volume post resection in 196 patients. The dataset was analyzed for volume changes over time and a subset of 7 patients that showed liver failure were considered for further analysis and matching to model dynamics.

2.6. Model Repeatability and Reproducibility

The model equations and parameters for various simulations presented in the manuscript are available in the main text and Appendix, respectively. The Matlab code for virtual patient cohort simulation and response mode classification is available in the supplemental file S1. The Matlab code for parameter optimization is available as supplemental file S2. The network model in Equations (1)–(24) was independently implemented in the Systems Biology Markup Language (SBML) by a laboratory colleague not involved in the original study, based on the equations and information provided in the manuscript. This model was set up based on the parameter values in the “Nominal Value” column of the Table A2 in the Appendix. An SBML code corresponding to this model implementation is included as supplemental file S3. Select figures for exploring the results from virtual patient cohort analysis are provided in the supplement in the Matlab FIG format. A brief discussion of the biological context and assumptions motivating the model is included in the Methods and some of the limitations were detailed in the Discussion.

3. Results

3.1. Modeling the Range of Response to Liver Resection in a Virtual Patient Cohort

We started with a computational model of liver regeneration, previously developed by our group [10]. The mathematical model of Cook et al. [10] considers hypertrophy and

hyperplasia in liver following resection [18], by accounting for hepatocytes in different phases of the cell cycle. The molecular aspects of this network model of liver regeneration are largely based on the dynamics of cytokine and growth factor pathways stimulated by the liver resection injury. Immediately post resection, the hepatocytes undergo priming in response to the cytokines released by Kupffer cells, activating the Janus Kinase (JAK)—Signal Transducer and Activator of Transcription (STAT) signaling pathway in the hepatocytes. Primed hepatocytes become responsive to the growth factors linking the priming phase to the cell-cycle progression. In the present computational model, response to liver regeneration following partial hepatectomy is triggered by metabolic load per unit liver mass. The network model is shown in Figure 1A and the corresponding systems biology graphic notation (SBGN) [19] diagram for the liver regeneration model is provided as supplementary information (Figure S1). This model can exhibit distinct modes of response ranging from complete recovery of liver mass to liver failure. As an illustrative example, Figure 1B shows the regeneration profile of two virtual patients that underwent 1/3rd liver resection but showed opposite responses, that is, recovery versus failure. Phase portrait [20,21] for the same virtual patients is shown in Figure 1C, depicting the evolution of hepatocytes in different phase of the cell cycle over time. Depending on the model parameters which corresponds to the two different virtual patients, for the same initial remnant liver mass, there exist two different stable steady states corresponding to recovery and failure.

We simulated the dynamics of liver mass in response to resection in a virtual patient cohort generated by varying key model parameters (see Methods). We analyzed the distribution of responses in the virtual patient cohort and classified the virtual patients into multiple response categories based on the liver mass outcome at the end of 2.5 years following resection. We analyzed the responses of 9000 virtual patients to unravel the mechanisms that lead to different response modes. The virtual patient cohort was generated by varying the metabolic load and the cell death sensitivities via Sobol sampling, while the remaining 30 parameters (out of 33) were held at the same values as that of Cook et al. [10] for the case of human. We chose to vary metabolic load (M) and cell death sensitivities (β_{cd}, θ_{cd}) from the 33-dimensional parameter space since these 3 parameters control the cell death process as incorporated in the network model (see Equations (1)–(3) and (13)). In this formulation, liver failure is considered as likely to occur in two ways: (i) either the liver regeneration does not commence at the rate necessary to meet the increased functional demand post resection, or (ii) even as the regeneration process is initiated, the cell death rate is sufficiently high as to result in liver failure [22].

Our simulation-based analysis suggests that the virtual patients can be categorized into four distinct classes based on the response to the resection: normal recovery, suppressed recovery, delayed failure and immediate failure. The regeneration profiles of different classes of response for 10% and 33.3% are shown in Figure 2A,B,D,E. We note that the suppressed patients did not show fast recovery immediately after surgery. In Figure 2C we show a representative patient data demonstrating recovery post-surgery from Yamamoto et al. [11]. From Figure 2F we observe that a subset of the virtual patients exhibited instantaneous liver failure, whereas others showed a delayed liver failure), demonstrating a good match in the timescale of the liver failure based on volumetric data from patients in Yamamoto et al. [11].

Simulated regeneration profiles of liver failure response show a sudden drop in fraction of liver either immediately post resection or after a delay of few days. However, such a sudden drop was not readily apparent in the clinical data. It is unlikely that patients undergoing liver failure would be subjected to liver volumetric analysis in the clinic. Also, in reality, the liver mass does not become zero as is seen in the numerical simulations, since the patient's body might succumb to the non-functioning liver even before such condition of extremely low levels of liver mass is reached. However, the drop in the liver mass in simulations is instructive on the dynamics of the process, informing the potential trajectories taken by a range of patients, consistent with the wide range of time delays observed in patients exhibiting liver failure [11].

We visualized the distribution of different classes of response modes—Normal, suppressed, delayed failure and immediate failure—as a function of the three controlling parameters (Figure 3). These classes were represented, albeit in different proportions, for varying levels of resection (10% and 33.3%). Figure 3A–F show the projection of classes of virtual patients for increasing levels of cell death sensitivity (θ_{cd}) at 10% and 33.3% resection. For low cell death sensitivity (θ_{cd}), we observe that liver failure occurs at high levels of metabolic load (M) and cell death sensitivity (β_{cd}) and corresponds to only delayed liver failure (Figure 3A,D). For higher level of resection, we observe that the normal recovery space is enveloped by suppressed recovery space. As the cell death sensitivity θ_{cd} increases, it becomes apparent that the parameter regions where normal recovery and liver failure occur are separated by a narrow region corresponding to the suppressed recovery (Figure 3A–F). For either level of resection, low metabolic load and cell death sensitivities led to normal recovery. This appears to be governed primarily by low cell death (Figure 4). By contrast, high values of these controlling parameters result in liver failure. Figure 3G,H show the pattern of the parameter region corresponding to the virtual patients that exhibited delayed failure for remnant liver fraction of 0.9 and 0.667 (Supplementary information Figures S2 and S3, Video S1, S2). The proportion of cases that exhibited delayed liver failure varied from 8.73% to 40.22% of the total number of virtual patients for remnant liver fraction of 0.9 and 0.667, respectively (i.e., 10% and 33.3% resection). At the same time, the proportion of cases that exhibited suppressed recovery changed from 1.63% to 37.25% and the proportion of normal recovery cases reduced from 37.23% to 8.17%, as the remnant liver fraction decreased from 0.9 to 0.667 (i.e., increase in the level resection from 10% to 33%). This shift in the response of different virtual patients with increasing resection implies that the remnant liver mass significantly regulates the qualitative outcome of liver resection surgery. In the next section, we focus on the changes in the cell death process as a function of the three key controlling factors involving cell sensitivities.

3.2. Cell Death as a Function of the Controlling Parameters in Different Classes of Patients

Following partial hepatectomy, both positive and negative stimulus are triggered resulting in liver regeneration or failure based on a balance of these stimulus. Cell death is likely an important regulatory process in liver regeneration, levels of which determine whether the organ can recover following injury. Analysis of the cellular equations ((Equations 1)–(3)) of the model along with the cell death sigmoidal function σ_{cd} ((Equation 13)) reveals that there

are three controlling parameters: metabolic demand (M) and the Two cell death sensitivity parameters (θ_{cd}) and (C_{cd}) that influence decay of cells post resection. In this section, we analyze the cell death profile as a function ((Equation 13)) of these three parameters (M , θ_{cd} , β_{cd}), individually and in combination. A change in the cell death sensitivity β_{cd} results in a shift of the angle or slope of the cell death function (Figure 4A). At a high level of resection (i.e., low fraction of remnant liver), increasing β_{cd} results in a downward shift in the cell death function, lowering the cell death (Figure 4A). However, at low level of resection (i.e., high remnant liver mass fraction) the cell death increases with increasing β_{cd} (Figure 4A). The cell death profile as a function of increasing cell death sensitivity (θ_{cd}) or metabolic load (M) results in a horizontal shift towards higher levels of remnant liver fraction (Figure 4B,C). Consequently, for a given level of remnant liver fraction, increasing metabolic load (M) or cell death sensitivity (θ_{cd}) lead to higher levels of cell death. The cell death profile when both the cell death sensitivity (β_{cd}) and metabolic load are changed simultaneously show a wide variation in both slope and the switching threshold of the sigmoidal cell death function (Figure 4D).

We analyzed the cell death function of the 9000 virtual patients that were categorized for response modes in Section 3.1. The cell death functions corresponding to the four response mode classes of patients are shown in Figure 5. The cell death functions of both recovery classes, normal and suppressed growth, are steep and shifted towards lower remnant liver fraction (Figure 5A,B,E,F), which resulted in almost negligible cell death at low levels of resection (i.e., high remnant liver fraction). The cell death functions for the liver failure classes show wide variation and are more inclined as compared to normal and suppressed recovery classes, resulting in higher cell death for any given level of resection (Figure 5C,D,G,H). The ranges of cell death functions are overlapping across the response modes, suggesting that cell death function is not the sole determining factor for classifying the fate of the patient post resection surgery. Specifically, the level of resection also plays a crucial role in determining the dynamics of liver recovery and potential failure.

3.3. Comparison of Cell Death between Recovery versus Failure Scenarios for Varying Level of Resection

In this section, we compare the responses of two virtual patients showing liver recovery and liver failure to different levels of resection to examine the distribution of responses. Figure 6A,D shows the regeneration profiles of a representative normal recovery and a liver failure cases from the virtual patient cohort for 1/3rd resection. The response profiles were simulated for different levels of resection. The virtual patient shows recovery for varying levels of resection, until a threshold value of 83%, beyond which liver failure occurred due to lack of a robust regenerative response (Figure 6A). By contrast, the response of the patient with controlling parameters leading to liver failure was insensitive to the level of remnant liver mass (Figure 6D). Simulations suggest that at higher levels of resection (i.e., lower remnant liver fraction), the patient can exhibit an inverse response in which the liver mass enters an initial recovery phase while undergoing a continuous loss of liver tissue that overcomes the recovery, resulting in liver failure. The failure is reflected in the response profile as a fast decline in the remnant liver fraction and the time delay of failure was longer with higher levels of remnant liver mass (Figure 6D).

For the above two virtual patient cases, we examined the evolution of hepatocytes in quiescent versus proliferating phase over time for different levels of resection. The corresponding projections of the phase spaces shown in Figure 6B,E suggest the existence of two attractors, one corresponding to failure and the other to recovery. For the first virtual patient case, a threshold of 83% resection separates the two attractors, such that increasing level of resection results in a shift in the stability of the system from one attractor to another, that is, exhibiting a transition from recovery to failure (Figure 6B). By contrast, the threshold of failure for the second virtual patient was low, likely corresponding to the existence of only one attractor for this case that is associated to liver failure (Figure 6E). We compared the cell death function for the two cases for uncovering potential differences over time. The surface plots shown in Figure 6C,F correspond to the two virtual patient cases and the trajectories on the surface depict the cell death process for a specific level of resection. For the first virtual patient case, the cell death is negligible for low levels of resection as seen by the trajectories largely spanning the lower part of the cell death function (Figure 6C). At a resection level beyond the threshold of failure, there is a drastic change in the cell death profile with the trajectories distributed in the upper portion of the cell death function, resulting in high cell death. In the second virtual patient case, the cell death trajectories show initial fluctuations at low levels of the cell death function, before shifting upward and saturating to the maximum cell death which leads to a fast decline in the remnant liver fraction (Figure 6F).

3.4. Tuning the Model for Different Liver Failure Patients

The analysis so far has provided insights into the effect of key biochemical and biophysical parameters in the liver regeneration process. We used this knowledge to tune the model parameters to capture the timescale of response to resection as reflected in the volumetric liver data for the patients that exhibited liver failure available in Yamamoto et al. [11]. Figure 7 shows the regeneration profiles predicted and optimized parameters for 7 real patients who exhibited liver failure. The model parameters were optimized for each patient-specific data set using elastic net (see Methods). The initial values for parameter optimization were chosen such that the values of the controlling parameters (M , θ_{cd} , β_{cd}) were set from a representative case of a virtual patient belonging to the class of delayed liver failure and the remaining 30 parameters were set from Cook et al. [10]. The simulated liver fraction profiles from models with patient-specific optimized parameters showed a good match with the volumetric data and captured both the slow (ID114,123,131,29) and fast (ID45,245,135) timescales of liver failure (Figure 7A). Comparing the optimized parameters to the initial values show that the priming of hepatocytes and JAK-STAT pathway contribute to the difference in the timescale of liver failure (Figure 7B). The table of optimized parameter values for the individual patients is given in Appendix A.

The profiles of remnant liver fraction for the slow and fast timescale of liver failure cases are shown in Figure 8A,F. The corresponding phase space portrait projection and the cell death functions of patients undergoing liver failure at the slow and fast timescales are shown in Figure 8A–E and Figure 8F–I, respectively. Even as the regeneration profiles of the patients with slow timescale of response appear to match a suppressed recovery case, the phase plane depicts that the patients likely undergo liver failure, as the fraction of remnant liver in each case is progressing towards the attractor of zero levels. Analysis of the patient-specific cell

death functions and trajectories suggest that the cell death trajectories of patients showing slow timescale of failure were largely restricted to the lower levels of cell death function. By contrast, the cell death trajectories of patients with relatively faster timescale of liver failure continually progressed from lower levels with a steep ascent to reach maximal levels of cell death function, corresponding to a rapid decline in the predicted liver fraction.

We note that the optimized values of the controlling parameters of all the patients were similar (Appendix A) and yet the cell death trajectories were rather divergent across the patients (Figure 8B–E,G–I). This is because cell death is not only dependent on the identified controlling parameters but also on the remnant liver fraction, which depends on the regenerative processes including priming pathways and proliferation. The parameters for the regenerative capacity are different between the patients (Figure 7B) and these differences manifest in the net amount of recovery, or lack thereof, in the fractional liver, indirectly affecting the cell death trajectory. Our simulations suggest that patients with slow timescale of liver failure sustain low cell death for a longer duration compared to the patients with a relatively faster timescale of failure that experience high cell death with a rapid decline in the remnant liver fraction leading to failure and patient death. These results from analysis of patient-specific model parameterization and simulation provide insights into how the cell death trajectories likely control the timescale of response to resection, particularly for the liver failure cases.

4. Discussion

The focus of this study is to understand the interplay between the different processes that are activated after a liver resection and can lead to post hepatectomy liver failure. We started with a computational model of liver regeneration process based on the published cellular network model of Cook et al. [10]. We simulated the model over a wide range of parameters and found that the model captures the wide variability in patient outcomes of liver regeneration and accounts for the variation in the observed timescales of liver failure. The variability in response to liver resection may arise due to inter-individual differences in the sensitivity to injury, which is likely due to disease etiology as well as intrinsic genetic factors [23]. For instance, hepatic steatosis alters the potential for cell survival and proliferation after liver resection as compared to the normal liver [10,24].

We identified the controlling parameters in the model which govern the timescale of the post hepatectomy liver failure in humans. These controlling parameters correspond to the metabolic load and cell death sensitivities. We generated a cohort of virtual patients by varying the controlling parameters and classified the virtual patients based on their model-predicted outcomes post liver resection. Our analysis suggests an inverse relationship between the levels of resection on the proportion of cases showing normal growth, suppressed recovery, with concomitant increase in the liver failure cases. These results are consistent with expectations of increased potential for failure with increasing level of resection in humans and animals [6]. Our model-based virtual patient analysis revealed that the parameter space corresponding to the transition from recovery to failure outcomes corresponds to delayed liver failure and the proportion of the delayed liver failure is dependent on the level of resection. These results show that the remnant liver fraction is an

important decision making variable that not only discriminates between liver failure and recovery but also governs the timescale of failure especially when a patient experiences delayed liver failure. These results provide new insights in interpreting the wide range of variation seen in clinical data sets [11].

Our model-based results on the critical role of a combination of cell death process and remnant liver fraction in controlling the liver regenerative response is consistent with the findings from animal studies showing that beyond a certain threshold of resection, cell death increases substantially, resulting in high likelihood of failure [6,25]. Importantly, reducing the cell death rescues the animals from undergoing failure after partial hepatectomy [26]. Similarly, preventing the hepatocyte death by blocking mitochondrial permeability transition can improve liver regeneration even for low remnant liver fraction in animals [27,28]. Our model-based results place these experimental findings in the context of cellular networks that underlie the regeneration process, as well as point out additional parameters that can be potentially manipulated to help shift the trajectory of the response modes to the recovery zone. The key controlling parameters were determined such that their combination decided the level of cell death that occurred post resection. With our analysis, we concluded that though cell death is an important process which influences the liver regeneration it is not the sole factor which determines liver failure. Liver failure is conditional upon the load and other perioperative conditions. This is likely to be patient specific and needs to be correlated with epidemiological, clinical measures and disease etiology [29]. Modulation of these additional factors likely improve the probability of liver recovery and hence have the potential to yield additional clinical options to reduce the chances of liver failure due to lack of regenerative response.

Various parameters of this model were derived based on biochemical data and animal/clinical observations (Furchtgott et al. [30]; Cook et al. [10]). The validation relevant to our present study is regarding the dynamics of liver failure. Model simulations predict a wide range of time to failure, which is consistent with the variability of the time scale of liver failure, seen in human data (Yamamoto et al. [11]). We note that the virtual patient analysis approach differs from patient-specific modeling that identifies parameters for individual patients and then performs comparative analysis across patients. By contrast, the virtual patient simulations are evaluated against the types of behavior (e.g., recovery versus failure), distribution of outcomes (e.g., range of time scales of failure) and so forth., that are exhibited in a cohort (An et al. [12,13]). In the present study, information from the virtual patient analysis on delayed liver failure response was used for optimization of the model parameters for patient-specific data, which were not used to build the original model. Our analysis identifies cell death relevant parameters and metabolic load as key factors controlling the time scale of liver failure post-surgical resection. These results are consistent with Yamamoto et al. [11] findings from analysis of patient data that suggest the extent of blood loss during surgery as a key factor discriminating between failure versus recovery scenarios. It is likely that perioperative factors such as blood loss manifest their effects on liver at least partly through increased cell death and higher load on the remaining functional organ.

Our study was focused on the regulatory networks at the cellular and pathway scales in the liver during the response to resection. However, failure or success of the resection surgery also depends on the recovery of the metabolic function in addition to the liver mass. The present computational framework can be extended to incorporate metabolic components to account for relationship between functional liver fraction and key metabolic functions, for example, glucose homeostasis [31], ammonia metabolism and urea cycle [32], or genome-scale metabolic models [33]. Liver failure can also occur due to extra-hepatic factors including immune response, as well as inter-organ metabolic and physiological relationships. For example, hepatic encephalopathy is an important condition that is guarded against by monitoring ammonia homeostasis, which is considered as a clinically-relevant indicator of liver metabolic function after liver surgery [34]. These processes are not explicitly accounted for in the present network model. One can consider that metabolic load parameter serves as a lumped, phenomenological factor that accounts for the stress on liver, with metabolic load per unit of liver mass (M/N in Equations (4), (9) and (11)) serving as a stimulus for regeneration as well as cell death [10,30,35]. Opportunities exist for integrating the liver regeneration model with multi-organ physiology models to expand the utility of the model into a whole body context. The model-based research discussed in this work on liver regeneration has been based on a lumped model considering the hepatocyte functional states. This approach can be extended to incorporate functional states of other liver cell types including hepatic stellate cells, sinusoidal endothelial cells and Kupffer cells (resident macrophages of the liver) [36], as well as potential emerging rescue approaches such as stem cell transplant [37]. Taken together, the above detailed extensions to the network model will permit relating the key controlling parameters to inter-cellular, tissue-scale and whole body physiological scale parameters and will likely provide additional insights into novel venues for clinical management and intervention.

Our use of a virtual patient cohort approach helped delineate the key parameter intervals and combinatorial dependencies that correspond to a wide range of predicted outcomes post resection. Fruitful next steps could be to correlate these model-predicted parameter subspaces to patient demographical data as well as preoperative clinical information and disease etiology. Development of such a correspondence between patient information and model parameters is likely to aid in generalized application of the dynamic modeling to a wide range of liver surgery scenarios. Such a model-based approach informed by patient data to constrain the parameters can assist in clinical decision making by predicting the categorical outcome prior to the clinical intervention. Specifically, our model-based approach can aid in estimating the safe level of resection a patient can undergo along with predicting the need for necessary manipulations of cell death sensitivities and metabolic load to maximize the chances of recovery.

Supplementary Material

Refer to Web version on PubMed Central for supplementary material.

Acknowledgments:

We thank Timothy Josephson for independently generating the SBML file and the SBGN diagram for the liver regeneration network model under study, which have been included in the supplementary material.

Funding: This research was funded by National Institute on Alcohol Abuse and Alcoholism grant number R01 AA018873, National Institute of Biomedical Imaging and Bioengineering grant number U01 EB023224 and National Science Foundation grant number EAGER 1747917.

Appendix A

Table A1.

Nomenclature of the model parameters and values of upper and lower bounds used in the optimization.

| Parameter | Range | Description |
|------------------|-------------------|--|
| M | 1.00411–100.41126 | Mechanical stress or increased nutrient and detoxification demand |
| k_{IL6} | 0.15–15 | Rate of production of IL6 from non-parenchymal cells |
| κ_{IL6} | 0.09–9 | Rate of IL6 degradation |
| V_{JAK} | 2000–200,000 | Maximum rate of activation of JAK |
| K_M^{JAK} | 1000–100,000 | Concentration of JAK, when the rate of activation of JAK is half of the maximum rate |
| κ_{JAK} | 0.04–4 | Rate of degradation of JAK |
| [proSTAT3] | 0.01–20 | Relative concentration of monomeric STAT3 |
| V_{ST3} | 75–7500 | Maximum rate of STAT3 phosphorylation |
| K_M^{ST3} | 0.04–40 | Michaelis-Menten concentration of proSTAT3 |
| κ_{ST3} | 0.05–1 | Rate of dephosphorylation of proSTAT3 |
| V_{SOCS3} | 14,000–34,000 | Maximum rate of SOCS3 activation |
| K_M^{SOCS3} | 0.0004–0.001 | Concentration of SOCS3, when it's rate of activation is half the maximum rate |
| κ_{SOCS3} | 0.1–0.7 | Rate of degradation of SOCS3 |
| K_I^{SOCS3} | 0.005–0.025 | SOCS3 inhibition constant on STAT3 |
| V_{IE} | 150–350 | Maximum rate of activation of IE gene |
| K_M^{IE} | 15–21 | Concentration of IE gene, when it's rate of activation is half the maximum rate |
| κ_{IE} | 3–7 | Rate of degradation of IE gene |
| k_{deg} | 5–9 | Rate of degradation of ECM by MMPs |
| κ_{ECM} | 30–36 | Rate of degradation of ECM |
| k_{GF} | 0.05–0.2 | Rate of production of growth factor from non-parenchymal cells |
| κ_{GF} | 0.1–0.35 | Rate of degradation of growth factor |
| k_{up} | 0.04–0.08 | Rate of binding of growth factor to ECM |
| k_{QP} | 0.005–0.009 | Rate of hepatocytes transition from quiescence to primed state |
| k_{PR} | 0.003–0.006 | Rate of hepatocytes transition from primed to replicating state |
| k_{RQ} | 0.04–0.065 | Rate of hepatocytes transition from replicating to quiescence state |
| k_{prol} | 0.01–0.03 | Rate of proliferation of hepatocytes |
| k_{req} | 0.05–0.15 | Rate of requiescence of primed hepatocytes |
| θ_{req} | 6–10 | Requiescence parameter in the sigmoidal function (σ_{req}) defining the threshold of requiescence |
| β_{req} | 2–4 | Requiescence parameter in the sigmoidal function (σ_{req}) defining the threshold of requiescence |

| Parameter | Range | Description |
|---------------|-----------------|--|
| k_{cd} | 0.05–0.15 | Cell death rate of damaged hepatocytes |
| θ_{cd} | 0.00110–0.11050 | Cell death sensitivity parameter of the sigmoidal function (σ_{cd}) |
| β_{cd} | 0.00260–0.26046 | Cell death sensitivity parameter of the sigmoidal function (σ_{cd}) defining the cell death threshold |
| k_G | 0.0003–0.0007 | Rate of growth of relative cell mass |

Table A2.

Table of the 33 model parameters optimized using the initial value as given in the table for the 7 patients (studied in section 3.4) from Yamamoto et al. [11] that showed liver failure.

| Parameter | Nominal Value | Patient Identification Number | | | | | | |
|------------------|---------------|-------------------------------|----------|----------|----------|----------|----------|----------|
| | | ID114 | ID123 | ID131 | ID29 | ID45 | ID 145 | ID135 |
| M | 10.041128 | 10.7480 | 10.0211 | 10.0173 | 10.0396 | 9.9112 | 10.0552 | 10.0425 |
| K_{IL6} | 1.5 | 3.9280 | 3.2484 | 1.6583 | 1.5000 | 1.0530 | 1.4620 | 1.4464 |
| κ_{IL6} | 0.9 | 3.9040 | 0.7807 | 0.9043 | 0.9000 | 1.0276 | 0.9117 | 0.9800 |
| V_{JAK} | 20,000 | 20,000 | 20,000 | 20,000 | 20,000 | 20,000 | 20,000 | 20,000 |
| K_M^{JAK} | 10,000 | 10,000 | 10,000 | 10,000 | 10,000 | 10,000 | 10,000 | 10,000 |
| κ_{JAK} | 0.4 | 1.4695 | 1.1701 | 0.3941 | 0.4000 | 0.5844 | 0.4330 | 0.3804 |
| [proSTAT3] | 2 | 6.1276 | 3.0179 | 1.9367 | 1.9736 | 1.9422 | 1.9866 | 1.9897 |
| V_{ST3} | 750 | 750.0337 | 750.0022 | 750.0003 | 750.0001 | 750.0006 | 750.0000 | 749.9999 |
| K_M^{ST3} | 0.4 | 1.0194 | 1.2485 | 0.4001 | 0.4000 | 0.4115 | 0.4096 | 0.3752 |
| κ_{ST3} | 0.1 | 0.0987 | 0.1614 | 0.1000 | 0.1000 | 0.1017 | 0.1152 | 0.1116 |
| V_{SOCS3} | 24000 | 24000 | 24000 | 24000 | 24000 | 24000 | 24000 | 24000 |
| K_M^{SOCS3} | 0.0007 | 0.0007 | 0.0007 | 0.0007 | 0.0007 | 0.0009 | 0.0007 | 0.0007 |
| κ_{SOCS3} | 0.4 | 0.4871 | 0.3970 | 0.4000 | 0.4000 | 0.1913 | 0.3855 | 0.3847 |
| K_I^{SOCS3} | 0.015 | 0.0139 | 0.0149 | 0.0150 | 0.0150 | 0.0150 | 0.0147 | 0.0150 |
| V_{IE} | 250 | 250.12 | 250.01 | 250.00 | 249.99 | 249.99 | 249.99 | 249.99 |
| K_M^{IE} | 18 | 19.1762 | 18.1366 | 18.0041 | 18.0055 | 18.0474 | 18.0014 | 17.9778 |
| κ_{IE} | 5 | 6.9573 | 5.3009 | 5.0022 | 4.9925 | 4.9951 | 5.0061 | 4.9493 |
| k_{deg} | 7 | 6.3119 | 7.2057 | 7.0017 | 6.9977 | 7.1109 | 6.9982 | 7.0171 |
| κ_{ECM} | 33 | 33.9672 | 33.0645 | 32.9999 | 33.0004 | 32.9871 | 33.0004 | 32.9939 |
| k_{GF} | 0.113 | 0.1677 | 0.1214 | 0.1130 | 0.1130 | 0.1128 | 0.1166 | 0.1103 |
| κ_{GF} | 0.23 | 0.3384 | 0.2453 | 0.2300 | 0.2300 | 0.2291 | 0.2298 | 0.2302 |
| k_{up} | 0.06 | 0.0577 | 0.0590 | 0.0600 | 0.0600 | 0.0598 | 0.0600 | 0.0600 |
| k_{QP} | 0.007 | 0.0079 | 0.0069 | 0.0070 | 0.0070 | 0.0056 | 0.0070 | 0.0070 |
| k_{PR} | 0.0044 | 0.0043 | 0.0044 | 0.0044 | 0.0044 | 0.0034 | 0.0044 | 0.0044 |
| k_{RQ} | 0.054 | 0.0517 | 0.0536 | 0.0540 | 0.0540 | 0.0509 | 0.0507 | 0.0547 |
| k_{prol} | 0.02 | 0.0202 | 0.0202 | 0.0200 | 0.0200 | 0.0277 | 0.0220 | 0.0144 |
| k_{req} | 0.1 | 0.1407 | 0.0999 | 0.1000 | 0.1000 | 0.1308 | 0.1013 | 0.0987 |

| Parameter | Nominal Value | Patient Identification Number | | | | | | |
|----------------|---------------|-------------------------------|----------|----------|----------|----------|----------|----------|
| | | ID114 | ID123 | ID131 | ID29 | ID45 | ID 145 | ID135 |
| θ_{req} | 8 | 9.9514 | 8.2151 | 7.9998 | 7.9994 | 7.9845 | 8.0009 | 8.0182 |
| β_{req} | 3 | 3.9615 | 3.1587 | 3.0021 | 3.0000 | 2.9657 | 2.9990 | 2.9563 |
| K_{cd} | 0.1 | 0.1390 | 0.1089 | 0.1000 | 0.1000 | 0.1001 | 0.1006 | 0.1003 |
| θ_{cd} | 0.011050 | 0.0117 | 0.0099 | 0.0111 | 0.0111 | 0.0108 | 0.0128 | 0.0114 |
| β_{cd} | 0.026046 | 0.0180 | 0.0270 | 0.0257 | 0.0249 | 0.0198 | 0.0260 | 0.0234 |
| k_G | 0.000657 | 0.000588 | 0.000601 | 0.000613 | 0.000614 | 0.000400 | 0.000497 | 0.000574 |

References

1. Fausto N; Campbell JS The role of hepatocytes and oval cells in liver regeneration and repopulation. *Mech. Dev* 2003,120,117–130. [PubMed: 12490302]
2. Taub R Liver regeneration: From myth to mechanism. *Nat. Rev. Mol. Cell Biol* 2004, 5, 836–847. [PubMed: 15459664]
3. Michalopoulos GK Hepatostat: Liver regeneration and normal liver tissue maintenance. *Hepatology* 2017, 65,1384–1392. [PubMed: 27997988]
4. Lorenzo CSF; Limm WML; Lurie F; Wong LL Factors affecting outcome in liver resection. *HPB* 2005, 7, 226–230. [PubMed: 18333195]
5. Dimick JB Hepatic Resection in the United States. *Arch. Surg* 2003,138,185. [PubMed: 12578418]
6. Guglielmi A; Ruzzenente A; Conci S; Valdegamberi A; Iacono C How much remnant is enough in liver resection? *Dig. Surg* 2012, 29,6–17. [PubMed: 22441614]
7. Garcea G; Maddern GJ Liver failure after major hepatic resection. *J. Hepatobiliary Pancreat. Surg* 2009,16, 145–155. [PubMed: 19110651]
8. Mann DV; Lam WWM; Hjelm NM; So NMC; Yeung DKW; Metreweli C; Lau WY Human liver regeneration: Hepatic energy economy is less efficient when the organ is diseased. *Hepatology* 2001, 34, 557–565. [PubMed: 11526542]
9. Van Den Broek MAJ; Olde Damink SWM; Dejong CHC; Lang H; Malagó M; Jalan R; Saner FH Liver failure after partial hepatic resection: Definition, pathophysiology, risk factors and treatment. *Liver Int.* 2008, 28, 767–780. [PubMed: 18647141]
10. Cook D; Ogunnaik BA; Vadigepalli R Systems analysis of non-parenchymal cell modulation of liver repair across multiple regeneration modes. *BMC Syst. Biol* 2015, 9,1–24. [PubMed: 25582171]
11. Yamamoto KN; Ishii M; Inoue Y; Hirokawa F; MacArthur BD; Nakamura A; Haeno H; Uchiyama K Prediction of postoperative liver regeneration from clinical information using a data-led mathematical model. *Sci. Rep* 2016, 6, 34214. [PubMed: 27694914]
12. An G; Mi Q; Dutta-moscato J; Vodovotz Y Agent-based models in translational systems biology. *Syst. Biol. Med* 2009,1,159–171.
13. An G; Mi Q; Dutta-moscato J; Vodovotz Y Mathematical models of the acute inflammatory response. *Curr. Opin. Crit. Care* 2004,10, 383–390. [PubMed: 15385756]
14. Sobol IM Global sensitivity indices for nonlinear mathematical models and their Monte Carlo estimates. *Math. Comput. Simul* 2001, 55, 271–280.
15. Miller GM; Ogunnaik BA; Schwaber JS; Vadigepalli R Robust dynamic balance of AP-1 transcription factors in a neuronal gene regulatory network. *BMC Syst. Biol* 2010, 4,1–17. [PubMed: 20056001]
16. Zou H; Hastie T Regularization and variable selection via the elastic net. *J. R. Stat. Soc. Ser. B Stat. Methodol* 2005, 67, 301–320.
17. Howsmon DP; Hahn J Regularization techniques to overcome over-parameterization of complex biochemical reaction networks. *IEEE Life Sci. Lett* 2017, 3, 31–34.

18. Marongiu F; Marongiu M; Contini A; Serra M; Cadoni E; Murgia R; Laconi E Hyperplasia vs hypertrophy in tissue regeneration after extensive liver resection. *World J. Gastroenterol* 2017,23,1764–1770. [PubMed: 28348481]
19. Le Novère N; Hucka M; Mi H; Moodie S; Schreiber F; Sorokin A; Demir E; Wegner K; Aladjem MI; Wimalaratne SM; et al. The Systems Biology Graphical Notation. *Nat. Biotechnol* 2009, 27, 735–742. [PubMed: 19668183]
20. Strogatz SH *Nonlinear Dynamics and Chaos with Applications to Physics, Biology, Chemistry and Engineering*, 1st ed.; Westview Press: Boulder, CO, USA, 2000.
21. Wiggins S *Introduction to Applied Nonlinear Dynamical Systems and Chaos*, 2nd ed.; Springer: Berlin, Germany, 2006; ISBN 0387217495.
22. Takeda K; Togo S; Kunihiro O; Fujii Y; Kurosawa H; Tanaka K; Endo I; Takimoto A; Sekido H; Hara M; et al. Clinicohistological features of liver failure after excessive hepatectomy. *Hepatogastroenterology* 2002, 49, 354–358. [PubMed: 11995449]
23. Nagasue N; Yukaya H; Ogawa Y; Kohno H; Nakamura T Human liver regeneration after major hepatic resection. A study of normal liver and livers with chronic hepatitis and cirrhosis. *Ann. Surg* 1987, 206, 30–39. [PubMed: 3038039]
24. Tanoue S; Uto H; Kumamoto R; Arima S; Hashimoto S; Nasu Y; Takami Y; Moriuchi A; Sakiyama T; Oketani M; et al. Liver regeneration after partial hepatectomy in rat is more impaired in a steatotic liver induced by dietary fructose compared to dietary fat. *Biochem. Biophys. Res. Commun* 2011, 407,163–168. [PubMed: 21371432]
25. Meier M; Andersen KJ; Knudsen AR; Nyengaard JR; Hamilton-Dutoit S; Mortensen FV Liver regeneration is dependent on the extent of hepatectomy. *J. Surg. Res* 2016, 205, 76–84. [PubMed: 27621002]
26. Van Poll D; Parekkadan B; Cho CH; Berthiaume F; Nahmias Y; Tilles AW; Yarmush ML Mesenchymal stem cell-derived molecules directly modulate hepatocellular death and regeneration in vitro and in vivo. *Hepatology* 2008, 47,1634–1643. [PubMed: 18395843]
27. Kroemer G; Reed JC Mitochondrial control of cell death. *Nat. Med* 2000, 6, 513–519. [PubMed: 10802706]
28. Lemasters JJ; Nieminen AL; Qian T; Trost LC; Elmore SP; Nishimura Y; Crowe RA; Cascio WE; Bradham CA; Brenner DA; et al. The mitochondrial permeability transition in cell death: a common mechanism in necrosis, apoptosis and autophagy. *Biochim. Biophys. Acta* 1998,1366,177–196. [PubMed: 9714796]
29. Lafaro K; Buettner S; Maqsood H; Wagner D; Bagante F; Spolverato G; Xu L; Kamel I; Pawlik TM Defining Post Hepatectomy Liver Insufficiency: Where do We stand? *J. Gastrointest. Surg* 2015,19,2079–2092. [PubMed: 26063080]
30. Furchtgott LA; Chow CC; Periwal V A model of liver regeneration. *Biophys. J* 2009, 96, 3926–3935. [PubMed: 19450465]
31. Huang J; Rudnick DA Elucidating the metabolic regulation of liver regeneration. *Am. J. Pathol* 2014,184, 309–321. [PubMed: 24139945]
32. Schenk A; Ghallab A; Hofmann U; Hassan R; Schwarz M; Schuppert A; Schwen LO; Braeuning A; Teutonico D; Hengstler JG; et al. Physiologically-based modelling in mice suggests an aggravated loss of clearance capacity after toxic liver damage. *Sci. Rep* 2017, 7,1–13. [PubMed: 28127051]
33. Gille C; Bölling C; Hoppe A; Bulik S; Hoffmann S; Hübner K; Karlstädt A; Ganeshan R; König M; Rother K; et al. HepatoNet1: A comprehensive metabolic reconstruction of the human hepatocyte for the analysis of liver physiology. *Mol. Syst. Biol* 2010, 6.
34. Wright G; Noiret L; Olde Damink SWM; Jalan R Interorgan ammonia metabolism in liver failure: The basis of current and future therapies. *Liver Int.* 2011, 31,163–175. [PubMed: 20673233]
35. Cook D; Vadigepalli R *Computational Modeling as an Approach to Study the Cellular and Molecular Regulatory Networks Driving Liver Regeneration In Liver Regeneration Basic Mechanisms, Relevant Models and Clinical Applications*; Academic Press: Boston, MA, USA, 2015; pp. 185–198, ISBN 9780124201286.
36. Michalopoulos GK Liver regeneration after partial hepatectomy: Critical analysis of mechanistic dilemmas. *Am. J. Pathol* 2010,176, 2–13. [PubMed: 20019184]

37. Stutchfiel BM; Forbes SJ; Wigmore SJ Prospects for Stem Cell Transplantation in the Treatment of Hepatic Disease. *Liver Transplant.* 2010,16, 827–836.

Author Manuscript

Author Manuscript

Author Manuscript

Author Manuscript

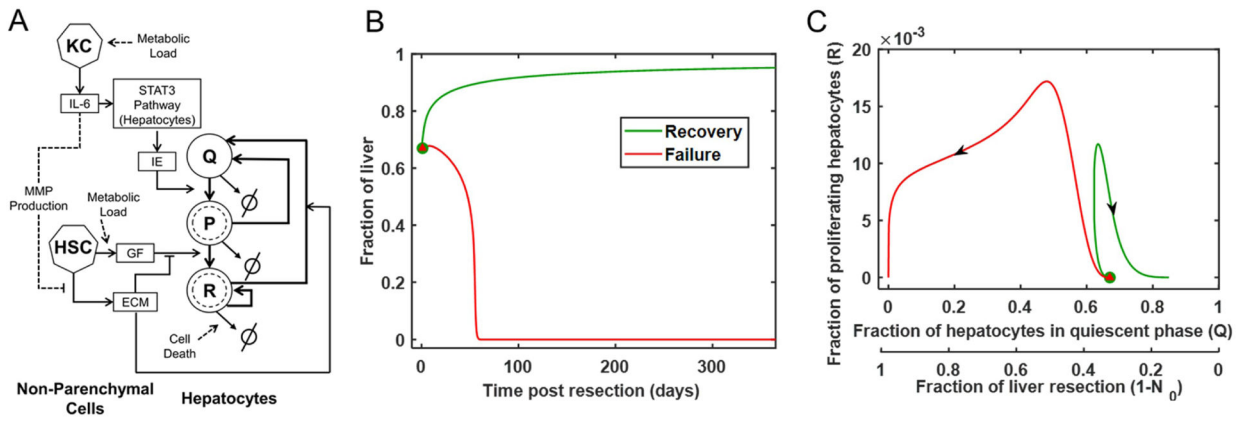


Figure 1.

(A) Network diagram of the liver regeneration model. (B) Regeneration profile of two virtual patients with liver recovery and failure respectively for 1/3rd resection, their model parameters are same as Cook et al. but with different values of the controlling parameters; Recovery: $M = 11.4645$, $\beta_{cd} = 0.0064$, $\theta_{cd} = 0.0262$; Failure: $M = 10.7312$, $\beta_{cd} = 0.0219$, $\theta_{cd} = 0.0224$. (C) Phase plane of the same virtual patients showing recovery and failure with the evolution of hepatocytes in quiescent and replicating phase of the cell cycle.

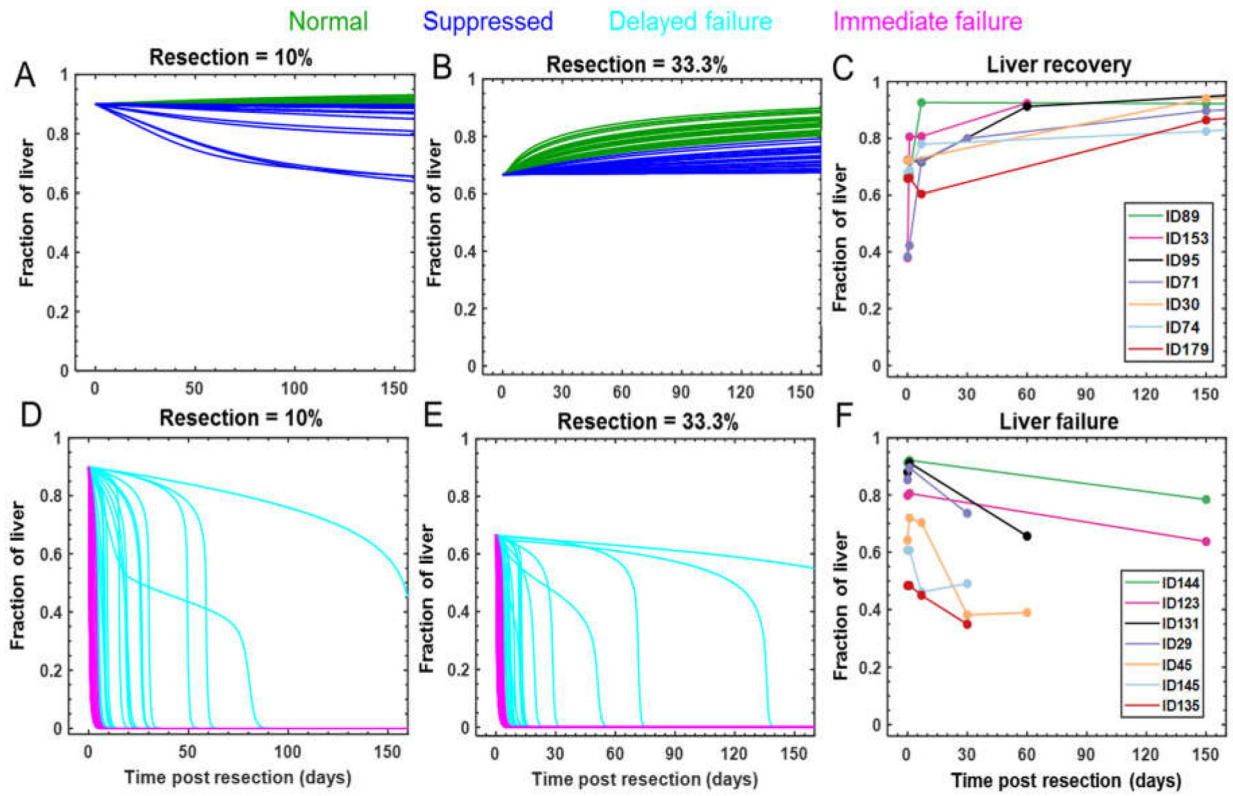


Figure 2. Regeneration profiles of virtual patients depicting two types of liver recovery (Normal and suppressed) for different levels of resection (**A**) 10% resection (**B**) 33.3% resection (**C**) Volumetric liver data from Yamamoto et al. [1] for patients that exhibited liver recovery. Response modes of virtual patients that underwent delayed and immediate liver failure for (**D**) 10% resection (**E**) 33.3% resection (**F**) Volumetric liver data for patients showing liver failure from Yamamoto et al. [1].

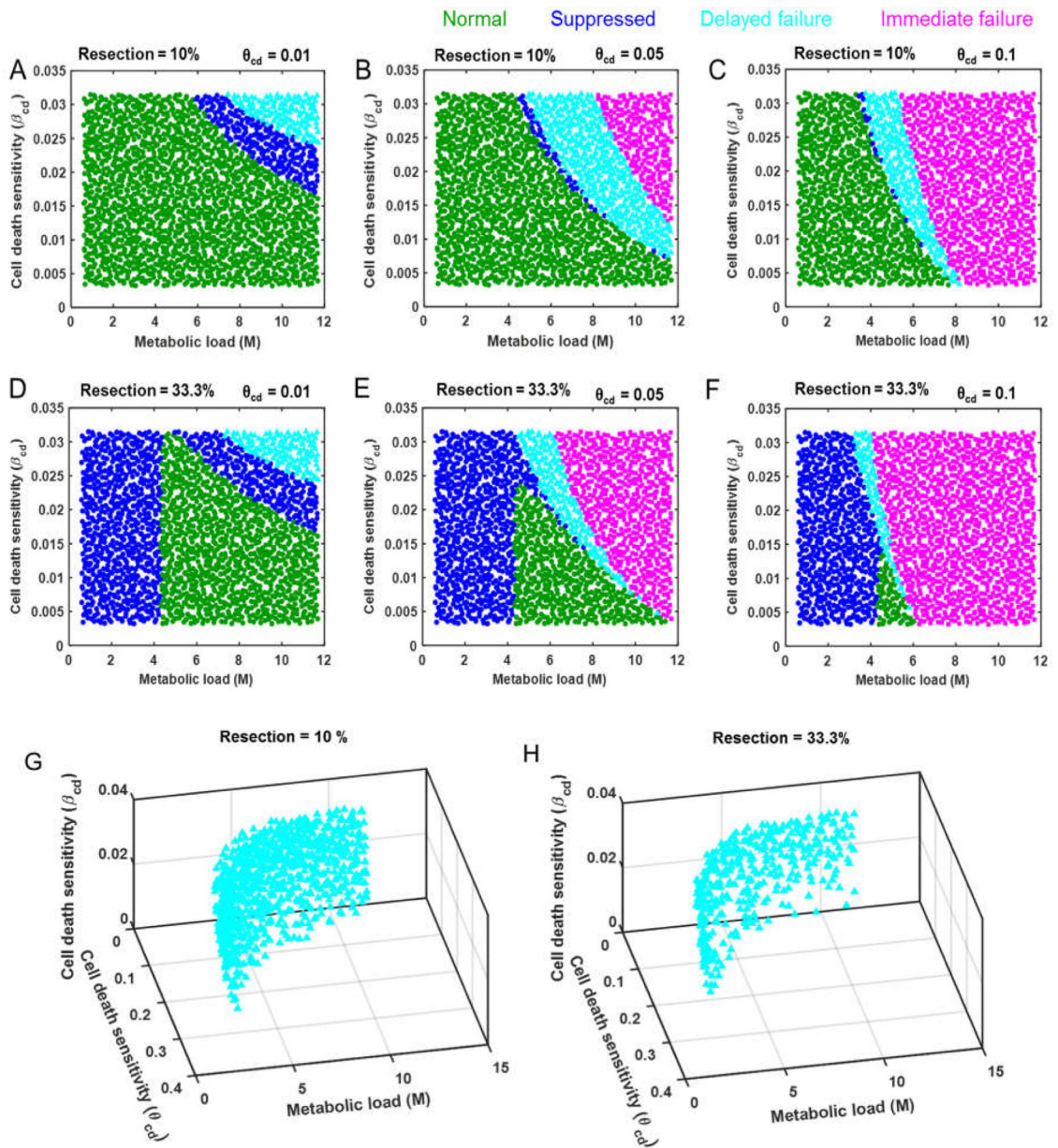


Figure 3. (A–F) Two-dimensional distribution of response modes of virtual patients sampled over a range of metabolic load (M) and cell death sensitivity (β_{cd}), for increasing levels of cell death sensitivity (θ_{cd}) at (A–C) 10% and (D–F) 33.3% resection. (G,H) Parameter space of the three controlling parameters showing the distribution of virtual patients with delayed liver failure post hepatectomy for 10% and 33.3% resection, respectively. Each marker represents a virtual patient.

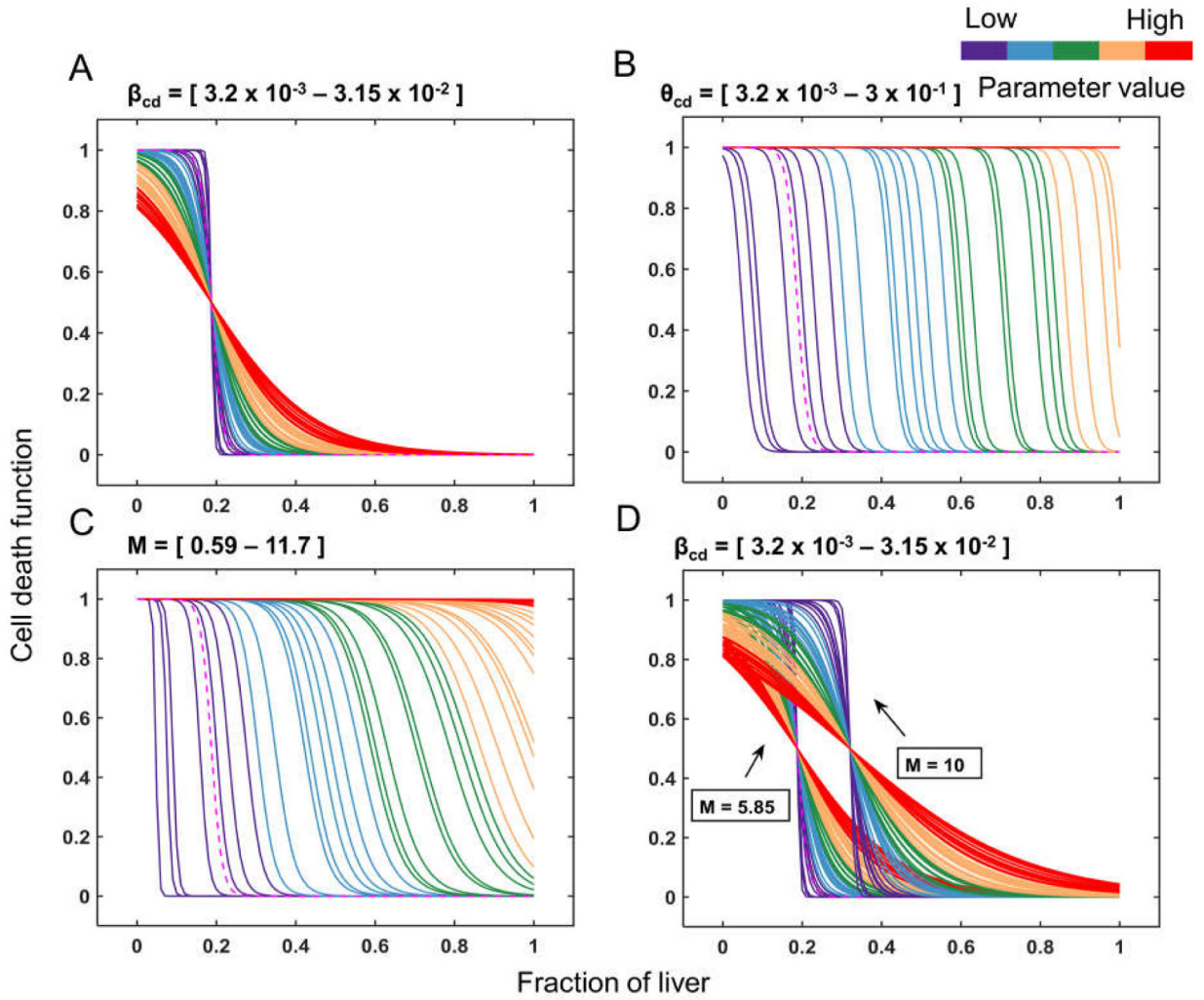


Figure 4. Changes in the cell death function upon varying the parameters that control the cell death process. **(A)** $\beta_{cd} = [3.2 \times 10^{-3} - 3.15 \times 10^{-2}]$; $M = 5.8507$, $\theta_{cd} = 0.0320$. **(B)** $\theta_{cd} = [3.2 \times 10^{-3} - 3 \times 10^{-1}]$; $M = 5.8507$, $\beta_{cd} = 0.0045$. **(C)** $M = [0.59 - 11.7]$; $\theta_{cd} = 0.0320$, $\beta_{cd} = 0.0045$. **(D)** $\beta_{cd} = [3.2 \times 10^{-3} - 3.15 \times 10^{-2}]$ and $M = 5.85$ or 10 , $\theta_{cd} = 0.0320$.

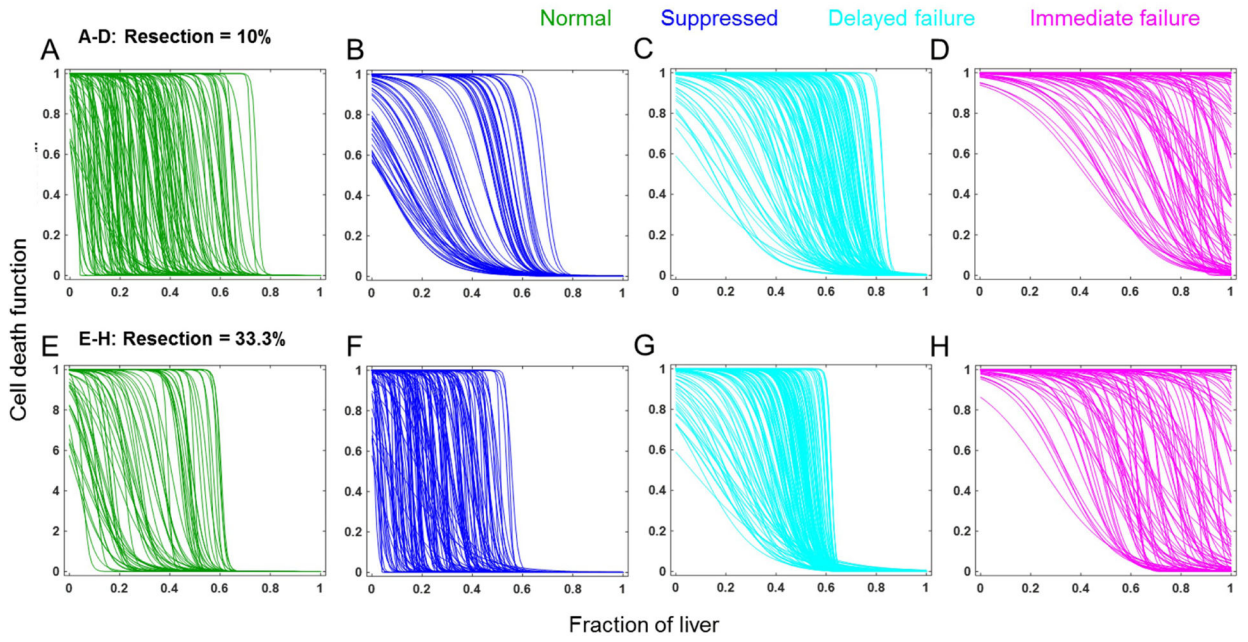


Figure 5.

The distribution of profiles of cell death function for the four classes of patients categorized by the response mode to a given level of resection. (A,E) Normal growth. (B,F) Suppressed recovery. (C,G) Delayed liver failure. (D,H) Immediate liver failure. (A–D) 10% resection and (E–H) 33.3% resection.

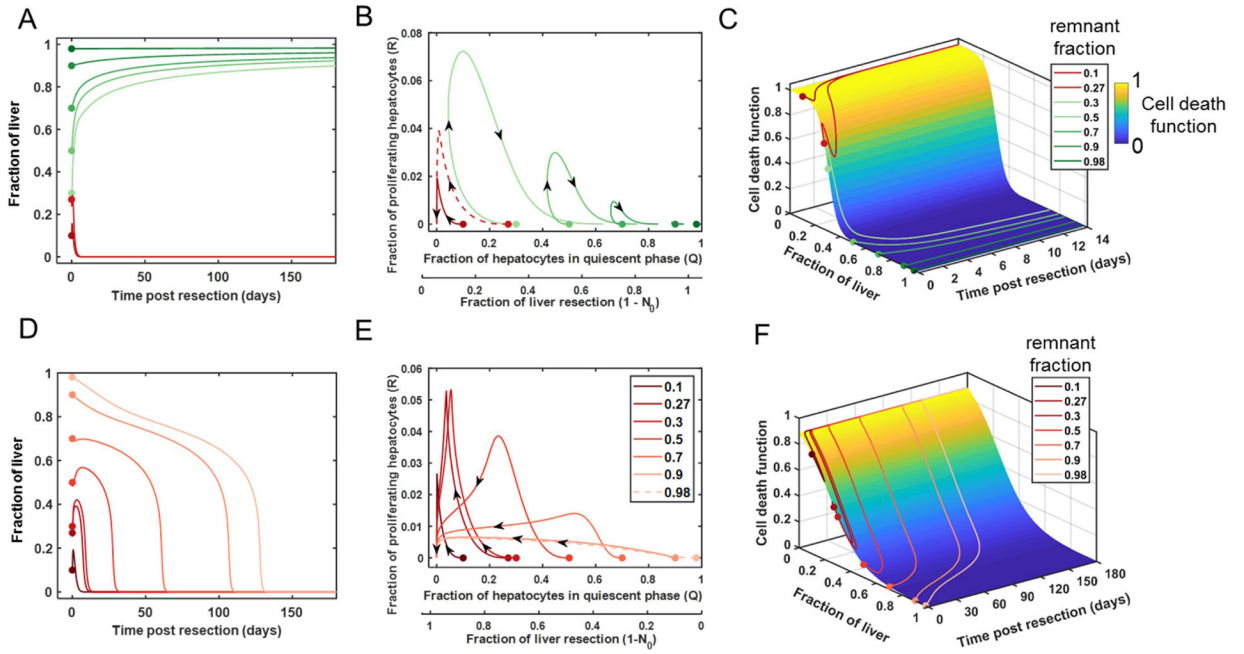


Figure 6. (A,D) Temporal profile of remnant liver fraction for two virtual patients for varying levels of resection. These cases were chosen based on the recovery and failure outcomes respectively for 1/3rd resection. (Recovery: $M = 11.4645$, $\beta_{cd} = 0.0064$, $\theta_{cd} = 0.0262$; Failure: $M = 10.7312$, $\beta_{cd} = 0.0219$, $\theta_{cd} = 0.0224$) The corresponding (B,E) phase plane and (C,F) cell death function for the two virtual patients are shown.

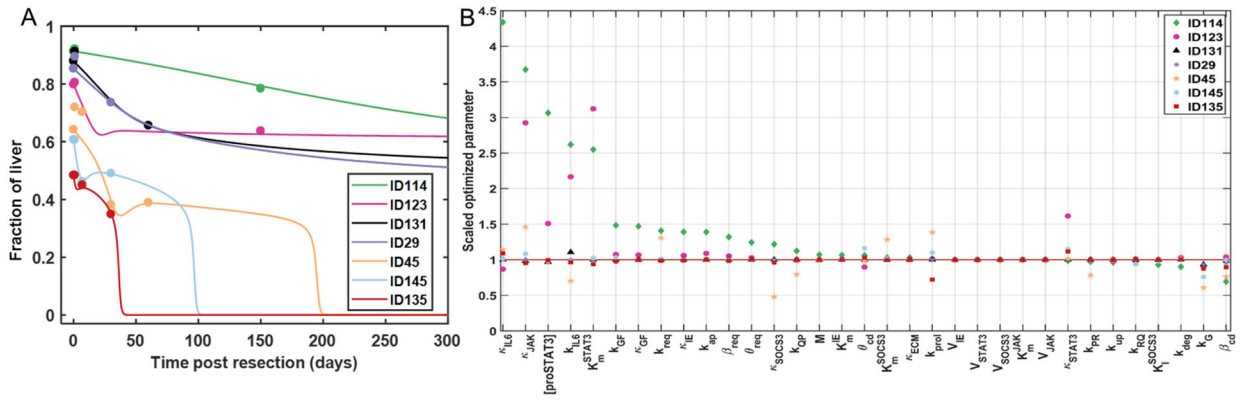


Figure 7. (A) Temporal profile of fractional liver of different patients that exhibited liver failure. The model fits are based on patient-specific optimized parameters obtained using elastic net. (B) Optimized parameters scaled to the initial parameter values for the individual patients.

Author Manuscript

Author Manuscript

Author Manuscript

Author Manuscript

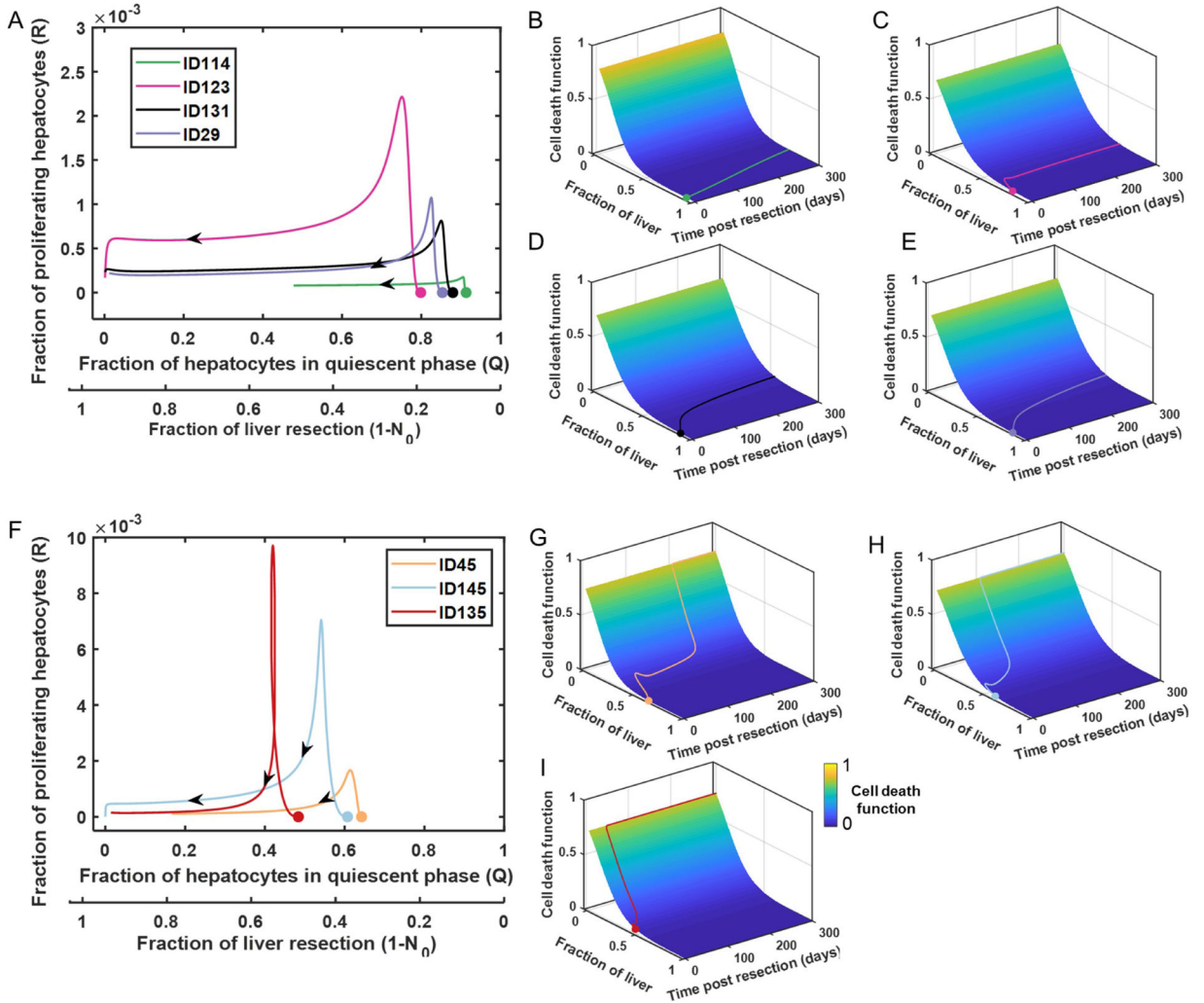


Figure 8. (A,F) Phase plane of a select set of patients exhibiting liver failure. (B–E) Patient-specific cell death functions and trajectories for patients with slow timescale of liver failure. (G–I) Patient-specific cell death functions and trajectories for patients with fast timescale of liver failure.