



## Research Paper

# Multi-centre Randomised Controlled Trial of a Smartphone-based Event Recorder Alongside Standard Care Versus Standard Care for Patients Presenting to the Emergency Department with Palpitations and Pre-syncope: The IPED (Investigation of Palpitations in the ED) study

Matthew J. Reed<sup>a,b,\*</sup>, Neil R. Grubb<sup>c</sup>, Christopher C. Lang<sup>c</sup>, Rachel O'Brien<sup>a</sup>, Kirsty Simpson<sup>a</sup>, Mia Padarenga<sup>a</sup>, Alison Grant<sup>a</sup>, Sharon Tuck<sup>d</sup>, Liza Keating<sup>e</sup>, Frank Coffey<sup>f</sup>, Lucy Jones<sup>g</sup>, Tim Harris<sup>h</sup>, Gavin Lloyd<sup>i</sup>, James Gagg<sup>j</sup>, Jason E. Smith<sup>k</sup>, Tim Coats<sup>l</sup>

<sup>a</sup> Emergency Medicine Research Group Edinburgh (EMERGE), Department of Emergency Medicine, Royal Infirmary of Edinburgh, 51 Little France Crescent, Edinburgh, EH16 4SA, UK

<sup>b</sup> Edinburgh Acute Care, Usher Institute of Population Health Sciences and Informatics, College of Medicine and Veterinary Medicine, University of Edinburgh, The Chancellor's Building, 49 Little France Crescent, Edinburgh EH16 4SB, UK

<sup>c</sup> Department of Cardiology, Royal Infirmary of Edinburgh, 51 Little France Crescent, Edinburgh EH16 4SA, UK

<sup>d</sup> Edinburgh Clinical Research Facility, Epidemiology and Statistics Core, University of Edinburgh, Western General Hospital, Crewe Road South, Edinburgh EH4 2XU, UK

<sup>e</sup> Emergency Department, Royal Berkshire NHS Foundation Trust, Reading RG1 5AN, UK

<sup>f</sup> DREEM - Department of Research and Education in Emergency medicine, Acute medicine and Major trauma, Nottingham University Hospitals NHS Trust, Queen's Medical Centre Derby Road, Nottingham, NG7 2UH, UK

<sup>g</sup> Chesterfield Royal Hospital NHS Foundation Trust, Chesterfield Rd, Calow, Chesterfield S44 5BL, UK

<sup>h</sup> Barts Health NHS Trust, Whitechapel, London E1 1BB, UK

<sup>i</sup> Royal Devon and Exeter Hospital, Barrack Rd, Exeter EX2 5DW, UK

<sup>j</sup> Department of Emergency Medicine, Musgrove Park Hospital, Taunton & Somerset NHS Foundation Trust, Taunton TA1 5DA, UK

<sup>k</sup> Emergency Department, University Hospitals Plymouth NHS Trust, Plymouth PL6 8DH, UK

<sup>l</sup> Emergency Medicine Academic Group, Department of Cardiovascular Sciences, University of Leicester, University Road, Leicester LE1 7RH, UK

## ARTICLE INFO

## Article history:

Received 4 November 2018

Received in revised form 7 February 2019

Accepted 15 February 2019

Available online 3 March 2019

## Keywords:

Ambulatory electrocardiography monitoring

Cardiac arrhythmias

Palpitations

Pre-syncope

## ABSTRACT

**Background:** Patients with palpitations and pre-syncope commonly present to Emergency Departments (EDs) but underlying rhythm diagnosis is often not possible during the initial presentation. This trial compares the symptomatic rhythm detection rate of a smartphone-based event recorder (AliveCor) alongside standard care versus standard care alone, for participants presenting to the ED with palpitations and pre-syncope with no obvious cause evident at initial consultation.

**Methods:** Multi-centre open label, randomised controlled trial. Participants  $\geq 16$  years old presenting to 10 UK hospital EDs were included. Participants were randomised to either (a) intervention group; standard care plus the use of a smartphone-based event recorder or (b) control group; standard care alone. Primary endpoint was symptomatic rhythm detection rate at 90 days. Trial registration number NCT02783898 ([ClinicalTrials.gov](https://clinicaltrials.gov)).

**Findings:** Two hundred forty-three participants were recruited over an 18-month period. A symptomatic rhythm was detected at 90 days in 69 ( $n = 124$ ; 55.6%; 95% CI 46.9–64.4%) participants in the intervention group versus 11 ( $n = 116$ ; 9.5%; 95% CI 4.2–14.8) in the control group (RR 5.9, 95% CI 3.3–10.5;  $p < 0.0001$ ). Mean time to symptomatic rhythm detection in the intervention group was 9.5 days (SD 16.1, range 0–83) versus 42.9 days (SD 16.0, range 12–66;  $p < 0.0001$ ) in the control group. The commonest symptomatic rhythms detected were sinus rhythm, sinus tachycardia and ectopic beats. A symptomatic cardiac arrhythmia was detected at 90 days in 11 ( $n = 124$ ; 8.9%; 95% CI 3.9–13.9%) participants in the intervention group versus 1 ( $n = 116$ ; 0.9%; 95% CI 0.0–2.5%) in the control group (RR 10.3, 95% CI 1.3–78.5;  $p = 0.006$ ).

**Interpretation:** Use of a smartphone-based event recorder increased the number of patients in whom an ECG was captured during symptoms over five-fold to more than 55% at 90 days. This safe, non-invasive and easy to use

\* Corresponding author at: Emergency Medicine Research Group Edinburgh (EMERGE), Department of Emergency Medicine, Royal Infirmary of Edinburgh, 51 Little France Crescent, Edinburgh EH16 4SA, UK.

E-mail addresses: [matthew.reed@nhslothian.scot.nhs.uk](mailto:matthew.reed@nhslothian.scot.nhs.uk) (M.J. Reed), [Neil.Grubb@nhslothian.scot.nhs.uk](mailto:Neil.Grubb@nhslothian.scot.nhs.uk) (N.R. Grubb), [Chris.Lang@nhslothian.scot.nhs.uk](mailto:Chris.Lang@nhslothian.scot.nhs.uk) (C.C. Lang), [Rachel.O'Brien@nhslothian.scot.nhs.uk](mailto:Rachel.O'Brien@nhslothian.scot.nhs.uk) (R. O'Brien), [Kirsty.Simpson@nhslothian.scot.nhs.uk](mailto:Kirsty.Simpson@nhslothian.scot.nhs.uk) (K. Simpson), [Mia.Padarenga@nhslothian.scot.nhs.uk](mailto:Mia.Padarenga@nhslothian.scot.nhs.uk) (M. Padarenga), [Alison.Grant@nhslothian.scot.nhs.uk](mailto:Alison.Grant@nhslothian.scot.nhs.uk) (A. Grant), [sharon.tuck@ed.ac.uk](mailto:sharon.tuck@ed.ac.uk) (S. Tuck), [Liza.Keating@royalberkshire.nhs.uk](mailto:Liza.Keating@royalberkshire.nhs.uk) (L. Keating), [Frank.coffey@nottingham.ac.uk](mailto:Frank.coffey@nottingham.ac.uk) (F. Coffey), [ljones24@nhs.net](mailto:ljones24@nhs.net) (L. Jones), [Tim.Harris@bartshealth.nhs.uk](mailto:Tim.Harris@bartshealth.nhs.uk) (T. Harris), [gavin.lloyd@nhs.net](mailto:gavin.lloyd@nhs.net) (G. Lloyd), [James.Gagg@tst.nhs.uk](mailto:James.Gagg@tst.nhs.uk) (J. Gagg), [jasonsmith@nhs.net](mailto:jasonsmith@nhs.net) (J.E. Smith), [tc61@leicester.ac.uk](mailto:tc61@leicester.ac.uk) (T. Coats).

device should be considered part of on-going care to all patients presenting acutely with unexplained palpitations or pre-syncope.

**Funding:** This study was funded by research awards from Chest, Heart and Stroke Scotland (CHSS) and British Heart Foundation (BHF) which included funding for purchasing the devices. MR was supported by an NHS Research Scotland Career Researcher Clinician award.

© 2019 Published by Elsevier Ltd. This is an open access article under the CC BY-NC-ND license (<http://creativecommons.org/licenses/by-nc-nd/4.0/>).

## Research in Context

### *Evidence Before This Study*

Palpitations and pre-syncope are together responsible for 300,000 annual Emergency Department (ED) attendances in the United Kingdom (UK) alone. Diagnosis of the underlying rhythm is difficult as many patients are fully recovered by the time of attendance, and examination and presenting ECG are commonly normal. Palpitations are typically intermittent, and a diagnosis can only be made through establishing a symptom–rhythm correlation. There have been few studies investigating the use of smartphone-based event recorders; none have been randomised trials and none have studied acute or ED populations. Most previous research in this area has focused on primary and secondary prevention of stroke through the detection of atrial fibrillation.

### *Added Value of Study*

This trial sought to clarify whether there is any benefit to adding a smartphone-based electrocardiogram (ECG) monitoring event recorder to standard care. The trial recruited patients presenting to the ED with palpitations and pre-syncope and no obvious cause in the ED. The principal outcome measure was the rate of detection of the underlying symptomatic rhythm at 90 days. This study shows that use of a smartphone-based event recorder increased the number of patients in whom an ECG was captured during symptoms over five-fold to more than 55% at 90 days. These are clinically significant rhythms as they diagnose the underlying cause of the patient's symptoms. The smartphone-based event recorder also increased the number of patients diagnosed with cardiac arrhythmia.

### *Implications of All the Available Evidence*

A smartphone-based event recorder should be considered as part of on-going care for all patients presenting acutely to EDs with unexplained palpitations or pre-syncope. It is safe, non-invasive, easy to use and far more efficient at diagnosing the underlying cause of the patient's symptoms than current standard care, which in the healthcare system studied does not serve this patient group well.

e.g., normal sinus rhythm, sinus tachycardia or frequent ectopics (extra or skipped heart beats) [3]. However around 1 in 10 patients do have a cardiac arrhythmia as their symptomatic rhythm [3].

The only way to establish the underlying heart rhythm is to capture an ECG whilst the patient has symptoms. Many patients go for years without diagnosis due to the difficulty in capturing the underlying heart rhythm. Recommended first line investigation of 12-lead ECG [4] and conventional ambulatory monitoring (Holter or event monitoring) [5–6] are of limited efficacy due to the infrequency of symptoms in many patients [5,7–10]. Most patients are discharged from the ED and asked to represent or call an ambulance should they get further symptoms in the hope of increasing the chances of capturing the episode on a standard 12-lead ECG.

If patients are referred to cardiology services for assessment, investigation usually starts with a Holter monitor but non-compliance and lack of extended monitoring reduces diagnostic yield to less than 20% [11]. Traditional event recorders, external continuous loop recorders and implantable loop recorders are expensive and not recommended for a patient group who rarely have malignant arrhythmias and may have prolonged periods between episodes.

Recent technological advances have led to several novel ECG monitoring devices appearing on the market [12,13]. The pocket sized AliveCor (now Kardia) mobile (AliveCor, San Francisco, USA) is a monitoring device that requires the patient to trigger the ECG recording [14]. With minimal training, two fingers from each hand are placed on the monitor (which can be connected to the back of a smartphone) for 30 s to take an ECG recording, which is transmitted wirelessly to the app, analysed and synchronised to an encrypted server. The patient can then alert their healthcare professional to allow their ECG to be viewed securely [14]. The device is supported for clinical use by a National Institute for Health and Care Excellence (NICE) technology appraisal [14] and was initially developed for detecting AF, for which the automatic diagnostic algorithm has excellent sensitivity (96.6%) and specificity (94%) for correctly interpreting AF versus normal sinus rhythm [15]. There have been several studies investigating the use of smartphone-based event recorders including AliveCor for population screening for AF in various settings [16–21] and feasibility for other rhythm disorders [3,22–24]. Whilst AliveCor has now undergone assessment against conventional care for AF detection [25], it has yet to be assessed against standard care for the broader investigation of palpitations and arrhythmia assessment. There have been no studies in an acute or ED population, where large numbers of patients present [2].

The primary aim of this study is to compare the symptomatic rhythm detection rate at 90 days of a smartphone-based event recorder (AliveCor) alongside standard care, compared to standard care alone, for participants presenting to the ED with palpitations and pre-syncope with no obvious cause evident at initial consultation.

## 1. Background

Palpitations (the noticeable pounding, fluttering or irregular beating of the heart) and pre-syncope (the sense of impending loss of consciousness) are together responsible for 1% of Emergency Department (ED) visits (300,000 annual ED attendances in the UK) [1,2]. Diagnosis of the underlying rhythm is difficult as many patients are fully recovered by the time that they are seen in the ED. Examination and presenting electrocardiogram (ECG) are commonly normal. Once captured, the symptomatic rhythm underlying about 9 in 10 episodes is benign,

## 2. Methods

### 2.1. Design

Multi-centre open label randomised controlled trial in EDs and Acute Medical Units (AMU) of 10 tertiary and district general hospitals in the UK. A favourable ethical opinion was obtained from the South East Scotland Research Ethics Committee 02 (REC reference: 16/SS/0074) and from the HRA.

## 2.2. Participants

Participants aged 16 years or over presenting with an episode of palpitations or pre-syncope and whose underlying ECG rhythm during these episodes remains undiagnosed after ED assessment. Written consent was obtained from all participants.

Table 1 shows inclusion and exclusion criteria.

## 3. Randomisation

Participants were equally distributed between the two study groups. To balance site-level characteristics and ensure investigators could not predict the group allocation of the next-to-be enrolled patient, randomisation was by permuted block randomisation by site. Sealed opaque envelopes containing either 'Standard Care plus Device' or 'Standard Care' cards were prepared by a central administrator not involved in the study. Blocks were randomly labelled using random number generation with site-specific study participation numbers and sent to each local study team. Participants eligible for inclusion were randomised by the local study team by taking the next lowest consecutively numbered sealed opaque envelope.

## 4. Procedures

The local direct care team screened and identified potential participants using ED or the AMU triage information and clinical or electronic records. Potentially eligible participants were assessed for study inclusion by the attending clinician. If the potential participant fulfilled the study eligibility criteria, they were given a Participant Information Sheet. Afterwards, if agreeable, written consent was taken. Participants were allocated either (a) INTERVENTION group; standard care plus the use of a smartphone-based event recorder or (b) CONTROL group; standard care, depending on study envelope allocation. All intervention group participants were given an AliveCor Heart Monitor and trained in the use of the device and app in the ED or AMU by the research team. Control group participants received no other intervention. Participants in both groups were admitted, referred or discharged by the treating clinician according to current local hospital protocols. Participants in both groups were followed up at 90 days through hospital record systems (paper or electronic depending on local policy), GP records and by telephone by the local study team. Participants were

also asked to complete a standardised written questionnaire. They also received a follow-up telephone call from the local study team enquiring about symptoms and contact with medical services. Participants were also asked about satisfaction and compliance.

If a participant allocated to the intervention group had an episode of palpitations or pre-syncope and was able to record an AliveCor Heart Monitor ECG during the episode, the participant emailed the ECG at a convenient time to the secure ([nhs.net](mailto:nhs.net)) email address of the coordinating Edinburgh research team. This email included a Portable Document Format (pdf) file attachment of the ECG tracing along with the participant's AliveCor app login (which was their study number; no identifiable participant data left the local site).

The AliveCor app rhythm analysis algorithm automatically reported any ECG recorded as Normal, Atrial Fibrillation or Unclassified. The duty Consultant Emergency Physician at the coordinating Edinburgh centre along with a trial team Emergency Physician reviewed the ECG. The central study team contacted the local study team to arrange follow-up if required. In cases of disagreement, the central cardiology team were contacted for further opinion.

If specialist follow-up of the ECG tracing was not required, the local study team wrote to the participant informing them and asked them to arrange follow-up with their general practitioner (GP) who was also contacted with the report. Participants continued to record ECGs for the duration of the study period, but the participant and GP were not contacted again if participants recorded further ECGs that similarly did not require specialist follow-up.

If the participant's ECG recorded a serious cardiac arrhythmia, i.e.,

- ventricular tachyarrhythmia
- complete or 3rd degree heart block
- second degree heart block type II (assumed to be symptomatic given the participant had chosen to record an ECG during the episode)
- pause >6 s
- symptomatic bradycardia <40 beats/min

during the study period, the central study team contacted the local study team who alerted the participant immediately by telephone, and referred them urgently to their local ED or cardiac electrophysiology service (as per local protocol).

Participants were asked to use a participant symptom diary to record any symptoms and include time and date, type of symptom and whether they were able to record an ECG during the symptoms. They returned this diary to the local study team along with the participant satisfaction and compliance questionnaire, and smartphone-based event recorder at the end of the 90 days in a pre-paid stamped, addressed envelope. Participants failing to do this were reminded by phone. Participant study information identified by study number alone, was collected on a paper Case Report Form and then entered into a specially designed password protected online accessed secure database (REDCAP; <http://www.project-redcap.org>), the server of which was held within the University of Edinburgh. The primary outcome was assessed by each local study team.

## 5. Outcomes

### 5.1. Primary Outcome

1. Symptomatic rhythm detection rate of a smartphone-based event recorder for symptomatic rhythm detection at 90 days versus standard care.

A 'symptomatic rhythm' will be any ECG rhythm recorded during an episode of palpitations or pre-syncope allowing symptom-rhythm correlation. This can be either via the AliveCor Heart Monitor ECG or through standard care.

**Table 1**

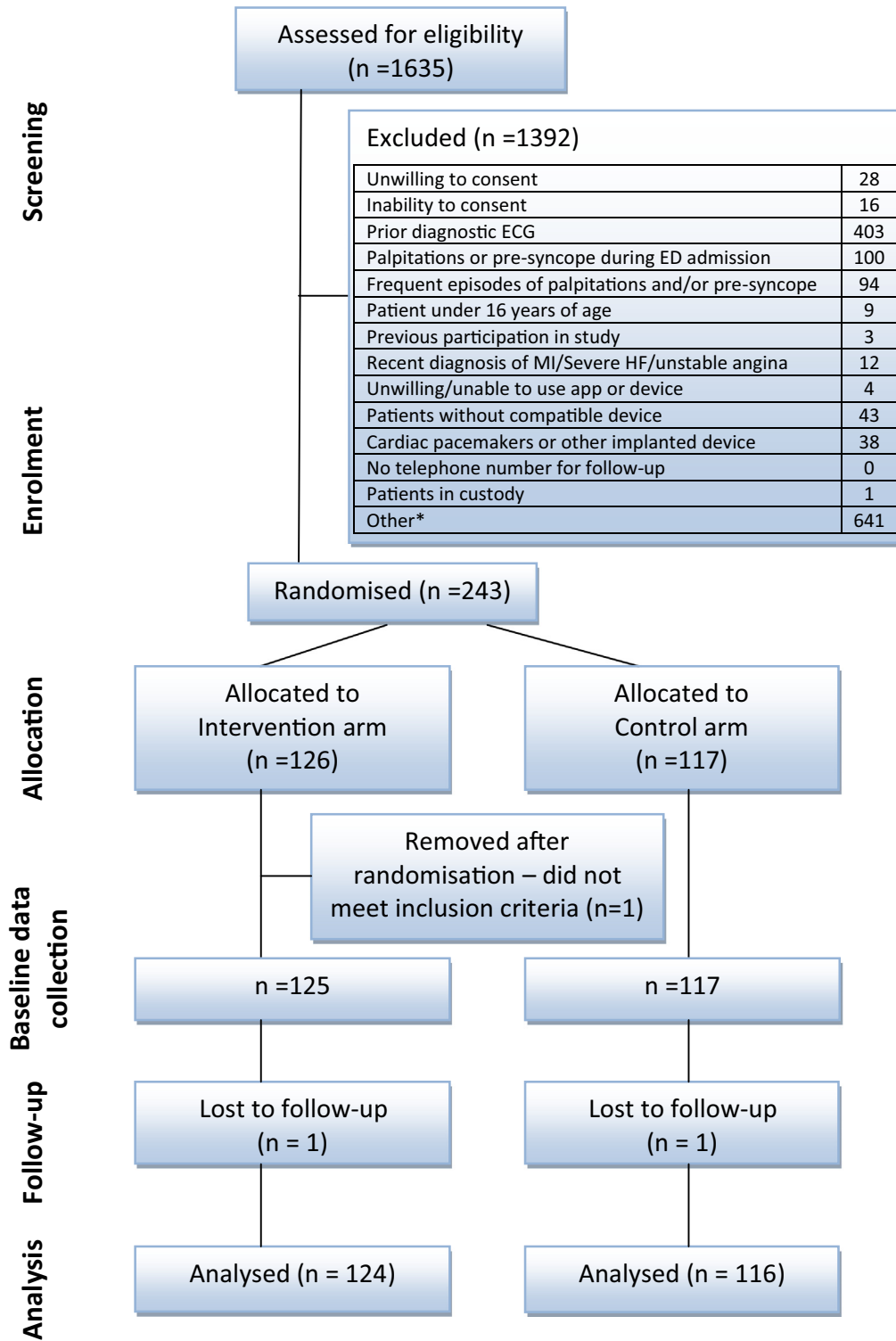
Inclusion and exclusion criteria.

Inclusion criteria were:

1. Participant aged 16 years or over.
2. Participant presenting with an episode of palpitations or pre-syncope with no obvious cause.
3. Participant's underlying ECG rhythm during these episodes remains undiagnosed after clinical assessment.

Exclusion criteria were:

1. Prior diagnostic ECG.
2. Palpitations or pre-syncope present during an admission ECG.
3. Frequent episodes (i.e. at least once a day).
4. Participants under 16 years of age.
5. Previous participation in the study.
6. Alcohol/illicit drugs/seizure/stroke/transient ischaemic attack/head trauma/hypoglycaemia as presumptive cause.
7. Inability or unwilling to give informed consent.
8. Participants with recent (i.e., within 3 months) myocardial infarction, severe heart failure (New York Heart Association class 4) or unstable angina.
9. Participants unwilling or unable to use the AliveCor Heart Monitor and AliveECG app.
10. Participants without a compatible smartphone or tablet.
11. Participants with cardiac pacemakers or other implanted electronic devices.
12. No telephone number for follow-up.
13. Participant in custody.



\*Other reasons for participant not being recruited:

Outside working hours	509
Alcohol or recreational drug use	19
Deemed inappropriate to approach	6
Non-local resident so unable to arrange follow-up if required	9
Anxiety driven palpitations	7
Other illness believed to be causing symptoms	43
Discharged before approach	48

Fig. 1. Study recruitment diagram.

**Table 2**  
Baseline characteristics of study population.

Data are n (%) unless stated. N = 242 (125/117) unless stated. Different denominators due to missing data

		Intervention n = 125	Control n = 117	Total n = 242			
Gender: Male		51	40.8	54	46.2	105	43.4
Age in years/mean (SD)		40.0 (14.0)		39.1 (13.5)		39.6 (13.8)	
Number of episodes palpitations or pre-syncope in last 24 h/median (IQR)		1.0 (1.0–3.0)		1.0 (1.0–3.0)		1.0 (1.0–3.0)	
History of presenting episode	Palpitations	110	88.0	109	93.2	219	90.5
	Pre-syncope	15	12.0	8	6.8	23	9.5
	1 min or less	19	15.2	19	16.2	38	15.7
Estimated length of presenting (last) episode	10 min or less	31	24.8	37	31.6	68	28.1
	1 h or less	27	21.6	27	23.1	54	22.3
	More than 1 h	48	38.4	34	29.1	82	33.9
Participants description of symptoms	Anxious	52	41.6	50	42.7	102	42.1
	Arm or neck pain or tingling	34	27.2	33	28.2	67	27.7
	Chest pain or pressure	51	40.8	52	44.4	103	42.6
	Dizziness	62	49.6	56	47.9	118	48.8
	Faint/Light headed	73	58.4	61	52.1	134	55.4
	Pounding	55	44.0	56	47.9	111	45.9
	Fluttering	42	33.6	38	32.5	80	33.1
	Short of breath	51	40.8	49	41.9	100	41.3
	Fast/Racing heart	77	61.6	68	58.1	145	59.9
	Skipped/missed heartbeat(s)	33	26.4	27	23.1	60	24.8
	Irregular heart beating	36	28.8	40	34.2	76	31.4
	Never had before	29 (n = 124)	23.4	29	24.8	58 (n = 241)	24.1
	How often do they occur?	Yearly (or even less frequent)	21 (n = 124)	16.9	27	23.1	48 (n = 241)
Monthly		27 (n = 124)	21.8	25	21.4	52 (n = 241)	21.6
How do the palpitations start?	Weekly	18 (n = 124)	14.5	15	12.8	33 (n = 241)	13.7
	More than once a week	29 (n = 124)	23.4	21	17.9	50 (n = 241)	20.7
Can palpitations be provoked?	Suddenly	104 (n = 123)	84.6	94/116	81.0	198 (n = 239)	82.8
	Gradually	19 (n = 123)	15.4	22/116	19.0	41 (n = 239)	17.2
How do the palpitations end?	Yes	16 (n = 123)	13.0	18 (n = 116)	15.5	34 (n = 239)	14.2
	Suddenly	48 (n = 121)	39.7	47 (n = 115)	40.9	95 (n = 236)	40.3
Participant able to end the attacks?	Gradually	73 (n = 121)	60.3	68 (n = 115)	59.1	141 (n = 236)	59.7
	Yes	19 (n = 123)	15.4	14	12.0	33 (n = 240)	13.8
Recent alcohol use?	Yes	11	8.8	16	13.7	27	11.2
Recent cocaine or amphetamine use?	Yes	1	0.8	0	0.0	1	0.4
Recent (last 7 days) febrile illness?	Yes	9	7.2	8	6.8	17	7.0
Past medical history							
Previous or known hypertension/ischaemic/coronary/valvular heart disease/failure	Yes	14 (n = 124)	11.3	20	17.1	34 (n = 241)	14.1
Previous or known anaemia or thyrotoxicosis	Yes	4 (n = 124)	3.2	3	2.6	7 (n = 241)	2.9
Drug history – is the patient taking							
β agonists	Yes	7	5.6	8	6.8	15	6.2
Antimuscarinics/Anticholinergic	Yes	5	4.0	2	1.7	7	2.9
Theophylline	Yes	0	0.0	1	0.9	1	0.4
Dihydropyridine calcium channel blockers	Yes	3	2.4	6	5.1	9	3.7
Class 1 anti-arrhythmics	Yes	1	0.8	2	1.7	3	1.2
Drugs that may prolong the QT interval	Yes	1	0.8	0	0.0	1	0.4

5.2. Secondary Outcomes

1. Symptomatic rhythm detection rate of a smartphone-based event recorder for cardiac arrhythmia detection at 90 days versus standard care.
2. Time to detection of symptomatic rhythm using a smartphone-based event recorder versus standard care.
3. Time to detection of symptomatic cardiac arrhythmia (rhythm that is not sinus rhythm/sinus tachycardia/ectopic beats) using a smartphone-based event recorder versus standard care.
4. Number of participants treated or (planned for treatment) for cardiac arrhythmia in participants using a smartphone-based event recorder versus standard care.
5. Participant satisfaction and monitor compliance.
6. Cost-effectiveness analysis.
7. Serious outcomes at 90 days: all cause death and major adverse cardiac events [MACE] (myocardial infarction, life-threatening arrhythmia, insertion of a pacemaker or internal cardiac defibrillator, insertion of pacing wire).

### 5.3. Assessment of Safety and Adverse Events

Serious outcomes were routinely collected as part of the study. The only adverse events recorded were those directly related to the use of the smartphone-based event recorder and application.

### 5.4. Statistical Methods

#### 5.4.1. Sample Size

Using a symptomatic rhythm detection rate at 90 days of 25% [4] versus standard care (10%), we estimated that 110 participants in each group would have 80% power to determine an absolute 15 percentage point improvement in symptomatic rhythm detection. We aimed to recruit an extra 10% in each group to allow for drop out (i.e., 121 participants in each group).

#### 5.4.2. Analysis

Descriptive analysis of participants are presented split by allocated study group. Baseline to 90-day change in diagnostic yield between the two study groups was analysed using comparison of proportions

tests. Additional comparison of proportions tests were used to compare further categorical binary variables between study groups (where expected counts were small the p-value from the Fisher's test was used instead). Categorical variables were compared using a  $\chi^2$  test (and  $\chi^2$  test for trend if appropriate). Log-rank tests and Kaplan–Meier curves were used to examine if the smartphone recorder had an effect on the time to detection of symptomatic rhythm and symptomatic cardiac arrhythmia separately up to 90 days versus standard care. All participants were analysed on an intention to treat basis. Statistical significance was determined as  $p < 0.05$  for all outcomes with an acknowledgment of increased type I error risk in the secondary outcomes not considered in the power calculation.

**5.4.2.1. Economic Analysis.** Overall and median healthcare utilisation costs (primary/community/secondary care and intervention costs) were calculated for both groups. The costing scope included primary care, secondary care and community NHS costs obtained from 2016/17 NHS reference cost data. A Mann–Whitney test was used to examine the overall cost-effectiveness between the smartphone-based event recorder and standard care. Healthcare utilisation costs per symptomatic

**Table 3**  
Examination findings, initial ECG and management.

Data are n (%) unless stated. N = 242 (125/117) unless stated. Different denominators due to missing data						
	Intervention n = 125		Control n = 117		Total n = 242	
<b>Examination</b>						
Initial pulse at triage /bpm - mean (SD)	85.3 (19.4) (n = 124)		83.0 (15.2) (n = 116)		84.2 (17.5) (n = 240)	
Initial systolic BP at triage /mmHg - mean (SD)	139.0 (22.5) (n = 124)		139.0 (20.5) (n = 116)		139.0 (21.5) (n = 240)	
Initial diastolic BP at triage /mmHg - mean (SD)	83.8 (12.7) (n = 124)		84.1 (13.6) (n = 116)		83.9 (13.1) (n = 240)	
First postural difference if present /mmHg - mean (SD)	6.7 (7.6) (n = 7)		0.3 (0.8) (n = 6)		3.8 (6.3) (n = 13)	
<b>Admission ECG</b>						
Rate /bpm - mean (SD)	78.8 (18.8)		77.5 (16.1)		78.2 (17.5)	
QRS axis - median (IQR)	79.0 (39.0–88.0) (n = 117)		80.0 (42.0–90.0) (n = 107)		79.5 (40.5–89.0) (n = 224)	
QTc int /ms - mean (SD)	395.1 (86.7) (n = 125)		401.5 (47.3) (n = 114)		398.2 (70.6) (n = 239)	
Sinus rhythm	123	98.4	117	100.0	240	99.2
PR > 200 ms	7	5.6	4	3.4	11	4.5
Slow risk in the initial portion of the QRS	0	0.0	0	0.0	0	0.0
Heart block?	0	0.0	0	0.0	0	0.0
QRS duration $\geq$ 120 ms	2 (n = 124)	1.6	3 (n = 116)	2.6	5 (n = 240)	2.1
Number of ventricular ectopics	0	118 (n = 124)	95.2	115 (n = 116)	99.1	233 (n = 240)
	1	4 (n = 124)	3.2	1 (n = 116)	0.9	5 (n = 240)
	2	2 (n = 124)	1.6	0 (n = 116)	0.0	2 (n = 240)
	1	14 (n = 121)	11.6	23 (n = 116)	19.8	37 (n = 237)
	2	18 (n = 121)	14.9	12 (n = 116)	10.3	30 (n = 237)
	3	15 (n = 121)	12.4	18 (n = 116)	15.5	33 (n = 237)
	4	15 (n = 121)	12.4	17 (n = 116)	14.7	32 (n = 237)
	5	19 (n = 121)	15.7	13 (n = 116)	11.2	32 (n = 237)
	6	13 (n = 121)	10.7	14 (n = 116)	12.1	27 (n = 237)
	7	14 (n = 121)	11.6	6 (n = 116)	5.2	20 (n = 237)
	8	10 (n = 121)	8.3	8 (n = 116)	6.9	18 (n = 237)
	9	3 (n = 121)	2.5	4 (n = 116)	3.4	7 (n = 237)
	10	0 (n = 121)	0.0	1 (n = 116)	0.9	1 (n = 237)
<b>ED clinician rating of likelihood of any underlying cardiac arrhythmia</b>						
	6	13 (n = 121)	10.7	14 (n = 116)	12.1	27 (n = 237)
	7	14 (n = 121)	11.6	6 (n = 116)	5.2	20 (n = 237)
	8	10 (n = 121)	8.3	8 (n = 116)	6.9	18 (n = 237)
	9	3 (n = 121)	2.5	4 (n = 116)	3.4	7 (n = 237)
	10	0 (n = 121)	0.0	1 (n = 116)	0.9	1 (n = 237)
<b>Management</b>						
Participant discharged from the ED/AMU	117		93.6		114	
Participant referred to outpatients	15 (n = 116)		12.9		15 (n = 114)	
If admitted then where?	3 (n = 8)		37.5		2 (n = 3)	
Ward - Non monitored	0 (n = 8)		0.0		0 (n = 3)	
Ward - Monitored	2 (n = 8)		25.0		1 (n = 3)	
Coronary Care Unit	3 (n = 8)		37.5		0 (n = 3)	
Direct to cardiology ward					3 (n = 11)	
<b>Reason(s) for admission?</b>						
Palpitation/pre-syncope investigation	8 (n = 8)		100.0		2 (n = 3)	
Other	0 (n = 8)		0.0		1 (n = 3)	

rhythm diagnosis were calculated for both groups using overall healthcare utilisation cost and number of patients with a symptomatic rhythm in each group.

Analyses were performed in SAS 9.4 (SAS Institute, Cary NC). The sponsor deemed that a data monitoring committee was not required. This trial was registered at [ClinicalTrials.gov](http://ClinicalTrials.gov) (trial registration number NCT02783898), and the protocol published in *Trials* [26].

**6. Results**

Between 4 July 2016 and 9 January 2018, 243 participants were recruited to the study at 10 centres (Edinburgh 66 participants, 27.2%, Reading 57, 23.5%, Royal London 43, 17.7%, Exeter 24, 9.9%, Plymouth 15, 6.2%, Chesterfield 12, 4.9%, Leicester 12, 4.9%, Musgrove Park 5, 2.1%, Nottingham 5, 2.1%, Whipps Cross 4, 1.6%). Fig. 1 details the study recruitment diagram, and Table 2 details the baseline characteristics of enrolled participants. One hundred twenty-six participants were allocated to the intervention group and 117 to the control group. Two hundred nineteen (90.5%) participants presented with palpitations and 23 (9.5%) with pre-syncope. One participant was removed from the study by the local study team after being randomised, as they did not meet the inclusion criteria. Baseline data were therefore collected on 125 participants in the intervention group and 117 in the control group. Participants ranged from 17 to 74 years of age with a mean age of 39.5 (SD 13.7). Table 3 details examination findings, initial ECG and management. One participant in each group was lost to follow-up leaving 124 participants available for analysis in the study group and 116 in the control group.

A symptomatic rhythm was detected at 90 days in 69 (n = 124; 55.6%; 95% CI 46.9–64.4%) participants in the intervention group versus 11 (n = 116; 9.5%; 95% CI 4.2–14.8) in the control group (RR 5.9, 95% CI 3.3–10.5; p < 0.0001). A symptomatic cardiac arrhythmia was detected at 90 days in 11 (n = 124; 8.9%; 95% CI 3.9–13.9%) participants in the intervention group versus 1 (n = 116; 0.9%; 95% CI 0.0–2.5%) in the control group (RR 10.3, 95% CI 1.3–78.5; p = 0.006).

The mean time to symptomatic rhythm detection in the intervention group was 9.5 days (SD 16.1, range 0–83) versus 42.9 days (SD 16.0, range 12–66) in the standard care group (p < 0.0001). Fig. 2 shows

the Kaplan–Meier curve of proportion of participants undiagnosed versus time up to 90 days for the intervention and control groups. Commonest symptomatic rhythms detected were sinus rhythm (in 53 participants; 66.3%), sinus tachycardia (19; 23.8%) and ectopic beats (13; 16.3%). Some participants had more than one symptomatic rhythm recorded. Eighty participants had a symptomatic rhythm detected with 12 of these having a symptomatic cardiac arrhythmia (atrial fibrillation or flutter, SVT and sinus bradycardia) and 68 having sinus rhythm, sinus tachycardia or ectopics [Table 4]. There were four cases where the central cardiology team were required for further ECG opinion after review by both the central on call and trial team Emergency Physicians. Table 4 also details how the diagnosis was made in both groups.

The mean time to symptomatic cardiac arrhythmia detection in the intervention group was 9.9 days (SD 15.6, range 1–55) versus 48.0 days (1 participant) in the control group (p = 0.0004). Symptomatic cardiac arrhythmias were AF (8 intervention, 0 standard care), SVT (3 intervention, 0 standard care), sinus bradycardia (0 intervention, 1 standard care) and atrial flutter (1 intervention, 0 standard care).

Serious outcome at 90 days in the intervention group was 11 (8.9%) versus 2 (1.7%) in the control group (p = 0.02). At 90 days, 12 participants in the intervention group were subsequently undergoing (or planning to undergo) treatment for symptomatic cardiac arrhythmia versus 6 in the control group (p = 0.192). Table 5 details the results of the participant satisfaction and monitor compliance questionnaire. Eighty of 92 (87.0%) participants found the AliveCor monitor easy to use. There were more ED presentations (after index visit) due to palpitations/pre-syncope in the intervention group (12/124; 9.7%; 95% CI 4.5–14.9% with 1 or more non index ED presentations) compared to the control group (3/116; 2.6%; 95% CI 0.0–5.5%; p = 0.031). The only death in the study was in the intervention group in a participant known to have treated congenital structural heart disease whose death was thought unrelated to his initial presentation to the ED.

There was no difference in the number of participants with one or more inpatient hospital days (over all admissions) due to palpitations or pre-syncope in the intervention group (2; n = 122; 2 patients with no data; 1.6%; 95% CI 0.0–3.8%) compared to the control group (1; n = 116; 0.9%; 95% CI 0.0–2.5%; p > 0.999), number of outpatient presentations due to palpitations or pre-syncope (p = 0.058), number of GP

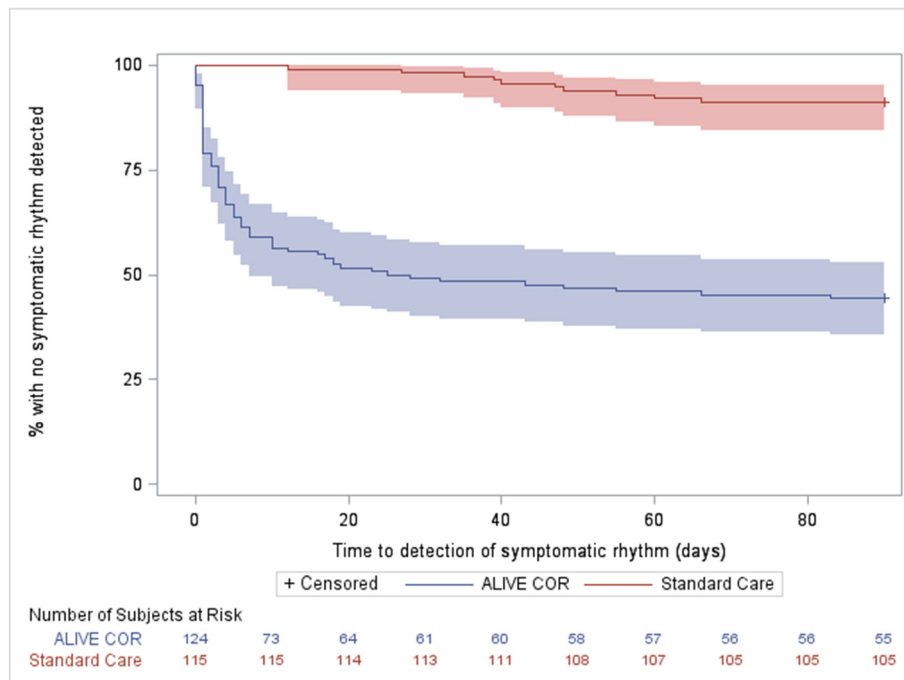


Fig. 2. Kaplan–Meier curve showing number of participants undiagnosed (y axis) versus time up to 90 days (x axis) in both study groups.

**Table 4**  
Summary of symptomatic rhythms, symptomatic cardiac arrhythmias and serious outcomes.

N = 240 (124/116) unless stated. Different denominators due to missing data *some participants had more than one symptomatic rhythm recorded			
	Intervention n = 124	Control n = 116	Total n = 240
<b>Symptomatic rhythm*</b>	69 (55.6%)	11 (9.5%)	80 (33.3%)
Sinus rhythm (40–100)	48	5	53
Sinus tachycardia (>100)	12	7	19
Ectopics	8	5	13
Atrial fibrillation	8	0	8
SVT	3	0	3
Atrial flutter	1	0	1
Sinus bradycardia (<40)	0	1	1
Atrial tachycardia	0	0	0
Ventricular tachycardia	0	0	0
Other rhythm	1	2	3
<b>Method of diagnosis of symptomatic rhythm*</b>			
AliveCor	65	0	65
24-hour Holter	2	5	7
48-hour Holter	1	2	3
7+ day Holter	0	1	1
Subsequent ED visit ECG	2	1	3
GP visit ECG	0	2	2
	<b>11</b>	<b>1</b>	<b>12</b>
	<b>(8.9%)</b>	<b>(0.9%)</b>	<b>(5.0%)</b>
<b>Symptomatic cardiac arrhythmia*</b>			
Atrial fibrillation	8	0	8
SVT	3	0	3
Sinus bradycardia (<40)	0	1	1
Atrial flutter	1	0	1
	<b>11</b>	<b>2</b>	<b>13</b>
	<b>(8.9%)</b>	<b>(1.7%)</b>	<b>(5.4%)</b>
<b>Serious outcome*</b>			
All cause death	0	1	1
Major adverse cardiac events [MACE = myocardial infarction, life-threatening arrhythmia, insertion of a pacemaker or internal cardiac defibrillator, insertion of pacing wire]	0	1	1
Cardiac arrhythmia	11	1	12
Significant structural heart disease	0	1	1
Initiation of anti-arrhythmia medical therapy	1	0	1
Life-threatening arrhythmia [ventricular tachyarrhythmia, complete or 3rd degree heart block, second degree heart block type II, pause >6 s, symptomatic bradycardia <40 beats per minute]	0	0	1

presentations due to palpitations or pre-syncope ( $p = 0.312$ ) or number of ECGs performed due to palpitations or pre-syncope ( $p = 0.143$ ). Median overall healthcare utilisation cost (primary/community/secondary care and intervention costs) in the intervention group was £108 (IQR 99.0–246.50, range 99–2697) versus £0 in the standard care group (IQR 0–120.0, range 0–4161;  $p = 0.0001$ ). Cost per symptomatic rhythm diagnosis was £921 less per patient per symptomatic rhythm in the intervention group (£474) compared to the control group (£1395).

## 7. Discussion

Use of a smartphone-based event recorder increases the symptom-rhythm correlation rate over five-fold at 90 days with a reduced cost per diagnosis. These are clinically significant rhythms as they diagnose the underlying cause of the patient's symptoms. In patients presenting with palpitations or near syncope the incorporation of a patient-activated detection device into routine practice may overcome some of the current difficulties in diagnosis caused by the normalisation of cardiac rhythm by the time the patient undergoes a clinical assessment. Given the frequency of patients presenting to the ED with palpitations and pre-syncope, our study findings suggest that a smartphone-based

**Table 5**  
Results of the participant satisfaction and monitor compliance questionnaire.

	Intervention arm	
	N	%
Total	125	100.0
	Missing	33
	Strongly Disagree	4
	Disagree	0
	Neutral	8
	Agree	32
	Strongly Agree	48
	Missing	34
The AliveCor heart monitor was easy to use	Strongly Disagree	2
	Disagree	9
	Neutral	14
	Agree	27
	Strongly Agree	39
	Missing	34
The AliveCor heart monitor was always available when I had symptoms and needed to record my heart tracing	Strongly Disagree	3
	Disagree	5
	Neutral	16
	Agree	26
	Strongly Agree	41
	Missing	34
I had no problems recording a heart tracing using the AliveCor app	Strongly Disagree	2
	Disagree	5
	Neutral	25
	Agree	24
	Strongly Agree	35
	Missing	34
I had no problems sending a heart tracing to the study team using the AliveCor app	Strongly Disagree	2
	Disagree	5
	Neutral	25
	Agree	24
	Strongly Agree	35
	Missing	34
During the study period (3 months) I was able to record a heart tracing when I had similar symptoms to the time I initially visited the Emergency Department	Strongly Disagree	2
	Disagree	8
	Neutral	27
	Agree	28
	Strongly Agree	26
	Missing	34
The AliveCor heart monitor will be useful in diagnosing the cause of my symptoms	Strongly Disagree	1
	Disagree	6
	Neutral	33
	Agree	24
	Strongly Agree	27
	Missing	32
Had you ever used a mobile heart tracing device before	Yes	5
	No	88

event recorder should be considered as part of on-going care of all patients presenting acutely with these symptoms.

There are different potential ways of incorporating the technology into patient care, which may depend on the configuration of local healthcare systems. In this study the devices and instructions were given to patients in the ED by a researcher, but this could also be undertaken at a follow-up appointment with a specialist nurse or family practitioner, where there is less time pressure than in emergency care. In this study, the ECGs were transmitted for central analysis; however, an alternative approach may be for the patient to show, on their phone, any recorded ECGs at a follow-up appointment. This would remove the need for the transfer of sensitive patient data and mean that a clinical system to respond to emailed ECGs would not be required. The AliveCor app rhythm analysis algorithm automatically reports any ECG recorded as normal, atrial fibrillation or unclassified with excellent sensitivity and specificity. Features such as this that are also found in other devices such as the newly launched Apple Watch Series 4 should allow ECG interpretation and patient education to be delivered at the time of ECG recording thereby reducing demand on physicians.

More patients had a subsequent ED attendance in the intervention group compared the control group. Whilst this number is small, it may be that the remote transmission of an ECG did not give the patient the immediate reassurance that they required. The psychology of patient interaction with 'smart' personal medical devices is an emerging field, and better understanding of patient/device interaction is likely to be important in realising the potential benefits of new technologies.



The patients found the monitor easy to use. This reinforces data from previous work in ED patients which showed that 74% found it acceptable to use a smartphone to monitor their health, 79% to use a medical device connecting to a smartphone to monitor their health, and 77% reported that they would feel confident to use such technology [27]. There is a concern that self-monitoring may lead to increased anxiety; however when the Arrhythmia Alliance [14] distributed AliveCor Heart Monitors to 1500 people of all ages, only one returned their monitor because it caused them to worry and check their heart rate too often.

We found that the commonest reason for a patient not to be able to participate was that they did not possess a smartphone. We did not record the age of non-participants, but it is likely that these were older patients. However, whilst smartphone ownership decreases with age our previous research shows 64% of those aged 50–75 and 30% over 75 years of age own a smartphone [27], and in the Arrhythmia Alliance study, older people were noted to be regular users of mobile technology and gave positive feedback about the system [14].

This study confirms previous evidence that most symptomatic rhythms in patients with palpitations or pre-syncope are benign [28]. Only 12 of 240 participants in the study experienced a symptomatic cardiac arrhythmia; the remaining 68 with symptomatic palpitations or pre-syncope were found to have sinus rhythm, sinus tachycardia or ectopic beats. Even in the absence of underlying arrhythmia, previously unexplained symptoms can cause anxiety and can have a significant impact on quality of life [29]. With such a low incidence of cardiac diagnoses in this population, it is perhaps appropriate that follow-up of these patients is in community care rather than in cardiology clinics (where currently these conditions account for up to one-fifth of all referrals) [30–33], with only patients diagnosed with a symptomatic cardiac arrhythmia being referred to specialist care.

This study suggests that the AliveCor technology performs effectively and safely. The randomised, prospective design with systematic data collection is a key strength of the study. Whilst there was a potential variation in standard care between sites, this element of pragmatic design ensures our findings are generalisable across all types of standard care in the UK National Health Service without compromising validity. Potential limitations of our study include a large proportion of recruitment occurring in office hours largely by research staff in research active hospitals and the use of a central ECG reading service not available in routine practice.

Only one type of device was studied and many similar devices are entering the market. We think that the results of this study will be generalisable across many forms of patient-activated, symptom-based home ECG recording devices. Subtle differences in design or incorporation into clinical workflow may have an influence on effectiveness, so novel devices should undergo clinical evaluation. It is also possible that patients choosing to take part in a study of new technology may be more motivated to use the device, and it may not perform as well in a non-study setting.

In summary, this study demonstrates the ability of a smartphone-based event recorder to improve clinical care and patient experience for those suffering undiagnosed palpitations and pre-syncope. These findings are likely to be generalisable from Emergency Medicine to General/Internal/Acute Medicine and General (Family) Practice in a broad range of developed healthcare systems. A safe, non-invasive and easy to use smartphone-based event recorder should be considered part of on-going care of all patients presenting acutely with unexplained palpitations or pre-syncope.

### Role of the Funding Source

The study was funded by Chest, Heart and Stroke Scotland (Action Research Grant R15/A164; £23,056) and British Heart Foundation (BHF Project Grant no. PG/17/63/33198; £21,347) which included funding for purchasing the devices. MR was supported by an NHS Research Scotland Career Researcher Clinician award. The funders of the

study had no role in study design, data collection, data analysis, data interpretation, or writing of the report. The corresponding author had full access to all the data in the study and had final responsibility for the decision to submit.

### Availability of Data and Material

The datasets generated and/or analysed during the current study are available from the corresponding author on reasonable request.

### Competing Interests

The authors declare that they have no competing interests and no financial interest in the device used in this study. AliveCor had no involvement in the study.

### Authors' Contributions

MR was responsible for the conception of the study. MR, NG, CL, ROB, KS and ST were responsible for the design of the study, ROB, MP, AG, MR, LK, FC, LJ, TH, GL, JG, JS and TC were responsible for acquisition of data, MR, ROB, NG, CL and ST were involved in data analysis and all authors were involved in interpretation of data, drafting the article and revising it critically for important intellectual content. All authors approved the final submitted version and agree to be accountable for all aspects of the work.

### Acknowledgements

None.

### References

- [1] Thiruganasambandamoorthy V, Stiell IG, Wells GA, Vaidyanathan A, Mukarram M, Taljaard M. Outcomes in presyncope patients: a prospective cohort study. *Ann Emerg Med* 2015;65(3):268–76 [e6].
- [2] Probst MA, Mower WR, Kanzaria HK, Hoffman JR, Buch EF, Sun BC. Analysis of emergency department visits for palpitations (from the National Hospital Ambulatory Medical Care Survey). *Am J Cardiol* 2014;113(10):1685–90.
- [3] Dimarco AD, Onwordi EN, Murphy CF, et al. Diagnostic utility of real-time smartphone ECG in the initial investigation of palpitations. *Brit J Cardio* 2018. <https://doi.org/10.5837/bjc.2018.006>.
- [4] Blomstrom-Lundqvist C, Sheinman MM, Aliot EM, et al. ACC/AHA/ESC guidelines for the management of patients with supraventricular arrhythmias – executive summary. *J Am Coll Cardiol* 2003;42:1493–531.
- [5] Raviele A, Giada F, Bergfeldt L, et al. Management of patients with palpitations: a position paper from the European Heart Rhythm Association. *Europace* 2011;13:920–34.
- [6] National Institute for Health and Care Excellence. NICE clinical knowledge summaries. Palpitations. London: NICE, May 2015. <https://cks.nice.org.uk/palpitations#!topicsummary> (accessed 16th August 2018).
- [7] Zimetbaum PJ, Josephson ME. The evolving role of ambulatory arrhythmia monitoring in general practice. *Ann Intern Med* 1999;150:848–56.
- [8] Scherr D, Dalal D, Henrikson CA, et al. Prospective comparison of the diagnostic utility of a standard event monitor versus a 'leadless' portable ECG monitor in the evaluation of patients with palpitations. *J Interv Card Electrophysiol* 2008;22:39–44.
- [9] Zimetbaum PJ, Kim KY, Josephson ME, et al. Diagnostic yield and optimal duration of continuous-loop event monitoring for the diagnosis of palpitations. *Ann Intern Med* 1998;28:890–5.
- [10] Barrett PM, Komatireddy R, Haaser S et al. Comparison of 24-hour Holter monitoring with 14-day novel adhesive patch electrocardiographic monitoring. *Am J Med* 2014; 127: 95.e11–95.e17.
- [11] Cheung CC1, Kerr CR, Krahn AD. Comparing 14-day adhesive patch with 24-h Holter monitoring. *Future Cardiol*. 2014; 10(3): 319–22.
- [12] Schreiber D, Sattar A, Drigalla D, Higgins S. Ambulatory cardiac monitoring for discharged emergency department patients with possible cardiac arrhythmias. *West J Emerg Med* 2014;15(2):194–8.
- [13] Turakhia MP, Hoang DD, Zimetbaum P et al. Diagnostic utility of a novel leadless arrhythmia monitoring device. *Am J Cardiol*. 2013; 15; 112(4): 520–4.
- [14] National Institute for Health and Care Excellence. AliveCor heart monitor and AliveECG app (Kardia Mobile) for detecting atrial fibrillation. NICE advice MIB35. London: NICE, 2015. <https://www.nice.org.uk/advice/mib35/chapter/technology-overview> (accessed 16th August 2018).
- [15] William AD, Kanbour M, Callahan T, et al. Assessing the accuracy of an automated atrial fibrillation detection algorithm using smartphone technology: the iREAD study. *Heart Rhythm* 2018. <https://doi.org/10.1016/j.hrthm.2018.06.037>.

- [16] Lau J, Lowres N, Neubeck L, et al. iPhone ECG application for community screening to detect silent atrial fibrillation: a novel technology to prevent stroke. *Int J Cardiol* 2013;165:193–4.
- [17] Lowres N, Neubeck L, Salkeld G, et al. Feasibility and cost-effectiveness of stroke prevention through community screening for atrial fibrillation using iPhone ECG in pharmacies. The SEARCHAF study. *Thromb Haemost* 2014;111:1167–76.
- [18] Haberman ZC, Jahn RT, Bose R, et al. Wireless smartphone ECG enables large-scale screening in diverse populations. *J Cardiovasc Electrophysiol* 2015;26:520–6.
- [19] Tarakji KG, Wazni OM, Callahan T, et al. Using a novel wireless system for monitoring patients after the atrial fibrillation ablation procedure: the iTransmit study. *Heart Rhythm* 2015;12:554–9.
- [20] Desteghe L, Raymaekers Z, Lutin M, et al. Performance of handheld electrocardiogram devices to detect atrial fibrillation in a cardiology and geriatric ward setting. *Europace* 2017;19:29–39.
- [21] Newham WG, Tayebjee MH. Excellent symptom rhythm correlation in patients with palpitations using a novel Smartphone based event recorder. *J Atr Fibrillation* 2017;10(1): 1514.
- [22] Macinnes M, Martin N, Fulton H, McLeod KA. Comparison of a smartphone-based ECG recording system with a standard cardiac event monitor in the investigation of palpitations in children. *Arch Dis Child* 2018. <https://doi.org/10.1136/archdischild-2018-314901> [Epub ahead of print].
- [23] Narasimha D, Hanna N, Beck H, et al. Validation of a smartphone-based event recorder for arrhythmia detection. *Pacing Clin Electrophysiol* 2018;41(5):487–94.
- [24] Mitchell ARJ, Le Page P. Living with the handheld ECG. *BMJ Innov* 2015;1:46–8.
- [25] Halcox JJP, Wareham K, Cardew A, et al. Assessment of remote heart rhythm sampling using the AliveCor heart monitor to screen for atrial fibrillation: the REHEARSE-AF study. *Circulation* 2017;136:1784–94.
- [26] Reed MJ, Grubb NR, Lang CC, et al. Multi-centre randomised controlled trial of a smart phone based event recorder alongside standard care versus standard care for patients presenting to the Emergency Department with palpitations and pre-syncope - the IPED (Investigation of Palpitations in the ED) study: Study protocol for a randomised controlled trial. *Trials* 2018; 19: 711. nndoi:<https://doi.org/10.1186/s13063-018-3098-1>
- [27] Summers A, Reed MJ. An evaluation of patient ownership and use and acceptability of smartphone technology within the emergency department. *Eur J Emerg Med* 2018;25(3):224–5.
- [28] Weber BE, Kapoor WH. Evaluations and outcomes of patients with palpitations. *Am J Med* 1996;100:138–48.
- [29] Barsky AJ, Cleary PD, Coeytaux RR, et al. The clinical course of palpitations in medical outpatients. *Arch Intern Med* 1995;155:1782–8.
- [30] Abbott AV. Diagnostic approach to palpitations. *Am Fam Physician* 2005;71:743–50.
- [31] Messineo FC. Ventricular ectopic activity: prevalence and risk. *Am J Cardiol* 1989;64: 53J–6J.
- [32] Kroenke K, Arrington ME, Mangelsdorff AD. The prevalence of symptoms in medical outpatients and the adequacy of therapy. *Arch Intern Med* 1990;150:1685–9.
- [33] Knudson MP. The natural history of palpitations in a family practice. *J Fam Pract* 1987;24:357–60.