

[ PICTURES IN CLINICAL MEDICINE ]

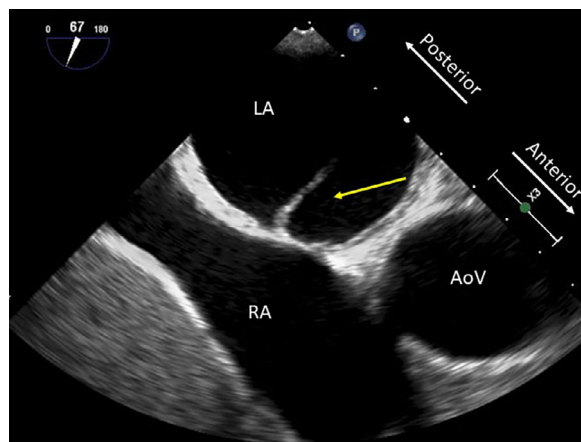
## Left Atrial Muscular Band Assessed by Three-dimensional Echocardiography

Yuki Saito, Koichi Nagashima, Ryuta Watanabe and Yasuo Okumura

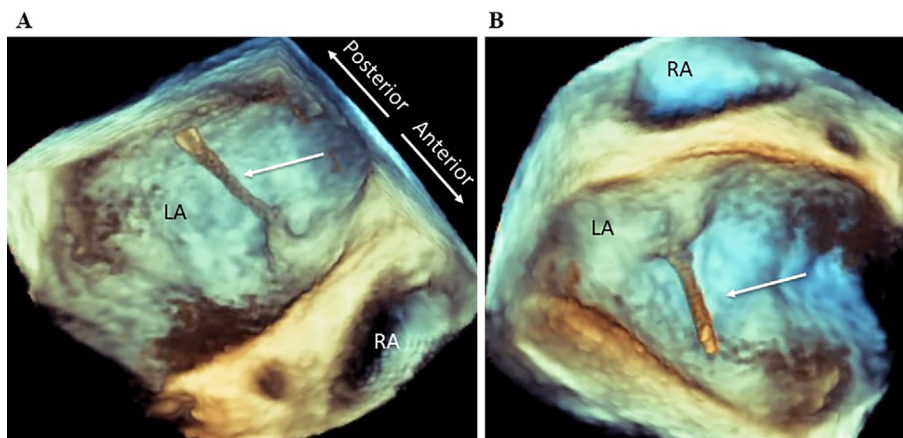
**Key words:** congenital heart disease, three-dimensional echocardiography, left atrial anomalous muscular band

(Intern Med 58: 1369-1370, 2019)

(DOI: 10.2169/internalmedicine.2096-18)



Picture 1.



Picture 2.

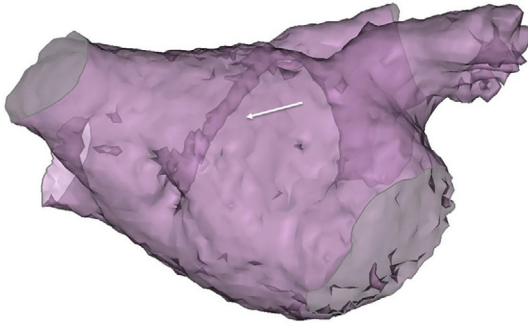
Left atrial (LA) anomalous muscular band is a rare congenital anomaly. A 54-year-old man with persistent atrial fibrillation (AF) underwent transesophageal echocardiogra-

phy (TEE) for the evaluation of LA thrombosis. On two-dimensional TEE, an abnormal linear structure was identified in the LA (Picture 1). Three-dimensional TEE clearly

Division of Cardiology, Department of Medicine, Nihon University School of Medicine, Japan

Received: September 10, 2018; Accepted: October 15, 2018; Advance Publication by J-STAGE: December 18, 2018

Correspondence to Dr. Yuki Saito, yuukimoriya310@yahoo.co.jp



**Picture 3.**

revealed an anomalous muscular band (Picture 2). Three-dimensional computed tomography also revealed the anomalous band connecting the LA septum to the posterior LA wall (Picture 3). The incidence of LA anomalous band is approximately 2% in autopsy cases (1). LA anomalous band is composed of fibrosis and muscular tissue and is related to patent foramen ovale and Chiari's network in origin (1). One case report showed that the anomalous band caused mitral valve prolapse (2), but no detailed echocardiographic

data were available. Assessing the structure of this band is difficult, but three-dimensional TEE allows for the detailed evaluation of this rare anomaly.

Permission for publication of the images was obtained from the patient and the institutional review board.

**The authors state that they have no Conflict of Interest (COI).**

### References

1. Yamashita T, Ohkawa S, Imai T, Ide H, Watanabe C, Ueda K. Prevalence and clinical significance of anomalous muscular band in the left atrium. *Am J Cardiovasc Pathol* **4**: 286-293, 1993.
2. Baran T, Kucukoglu MS, Okcun B, Cetin G, Hatemi AC, Uner S. A rare cause of mitral insufficiency: left atrial anomalous band. *Echocardiography* **20**: 83-85, 2003.

The Internal Medicine is an Open Access journal distributed under the Creative Commons Attribution-NonCommercial-NoDerivatives 4.0 International License. To view the details of this license, please visit (<https://creativecommons.org/licenses/by-nc-nd/4.0/>).