

Coexpression of *WUSCHEL* related *homeobox* (*WOX*) 2 with *WOX8* or *WOX9* promotes regeneration from leaf segments and free cells in *Nicotiana tabacum* L.

Masaharu Kyo*, Kazuna Maida, Yuki Nishioka, Koitaro Matsui

Faculty of Agriculture, Kagawa University, Kagawa 761-0795, Japan

*E-mail: kyo@ag.kagawa-u.ac.jp Tel: +81-87-891-3132 Fax: +81-87-891-3012

Received December 9, 2017; accepted January 26, 2018 (Edited by G.-T. Kim)

Abstract To examine the effect of the ectopic expression of three *Arabidopsis* genes, including *WOX2*, *WOX8* and *WOX9*, on the regenerative competency of tissues and cells cultured in vitro, we developed a transgenic variety of *Nicotiana tabacum*, in which these genes were under the transcriptional control of a chemical-inducible expression system. We designed a two-step culture method to feasibly demonstrate the effect as follows. Leaf segments of approximately 10 mm² were prepared from transgenic plants and their hybrids and cultured in a liquid medium based on modified Murashige and Skoog medium supplemented with an auxin, 2,4-dichlorophenoxyacetic acid and/or an expression inducer β -estradiol for 10 days in dark. The segments were subsequently cultured on a solidified medium in the absence of both the auxin and inducer in light for 3 weeks. We observed remarkable regeneration of plantlets only in segments derived from the hybrids possessing two transgenes, *WOX2* combined with *WOX8* or *WOX9*, but no regeneration in the segments derived from their parental lines. We also observed that free cells released from the hybrid explants in the liquid medium developed into embryo-like structures due to the transient application of the inducer. In a wide range of species including recalcitrants, the effect of the coexpression of these genes may be useful for developing an alternative to conventional protocols that requires cytokinin.

Key words: *Nicotiana tabacum*, regeneration, *WOX2*, *WOX8*, *WOX9*.

Introduction

The *WUSCHEL* related *homeobox* (*WOX*) gene family was defined in *Arabidopsis thaliana* and some family members; for example, *WOX2*, *WOX8* and *WOX9* showed a spatiotemporal expression pattern in the early phase of zygotic embryogenesis (Haecker et al. 2004; Palovaara et al. 2013). These genes play important roles in various developmental events, such as zygote polarization, embryonic tissue proliferation, embryonic pattern formation, stem cell niche maintenance and flower development and lateral organ development (Breuninger et al. 2008; Chung et al. 2016; Costanzo et al. 2014; Ueda and Laux 2012; Wu et al. 2007; Zhou et al. 2015). The *WOX* gene family is evolutionarily conserved throughout the plant kingdom (van der Graaff et al. 2009), and their orthologs also showed specific expression in zygotic and/or somatic embryogenesis in different species; for example, *Vitis vinifera* (Gambino et al. 2011), *Populus tomentosa* (Liu et al. 2014) and the gymnosperms *Larix decidua* (Rupps et al. 2016) and

Picea abies (Hedman et al. 2013; Palovaara et al. 2010; Zhu et al. 2016), suggesting their functional conservation.

WUS was the first gene to be identified in the *WOX* family (Laux et al. 1996), and is expressed in the cells located at the center of the 16-cell-stage embryo and in the organizing center of the apical meristem to maintain the pluripotent stem cells (Mayer et al. 1998). This gene was rediscovered through functional screening for a regeneration-promoting (RP) gene using a LexA-VP16-estrogen receptor chimeric transcription activator system (XVE system) in *A. thaliana* (Zuo et al. 2002a). Such RP effects are useful for improving the transformation frequency of recalcitrant species in tissue cultures and developing a maker-free screening method (Zuo et al. 2002b). Several attempts to induce regeneration using the ectopic expression of *WUS* have previously been reported in some species other than *A. thaliana*, such as *N. tabacum* (Rashid et al. 2007), *Coffea canephora* (Arroyo-Herrera et al. 2008), *Capsicum chinense* (Solís-Ramos et al. 2009), white spruce (Klimaszewska et al. 2010) and cotton (Bouchabké-Coussa et al. 2013). However, it

Abbreviations: 2,4-D, 2,4-dichlorophenoxyacetic acid; mMS, modified Murashige and Skoog medium; RP, regeneration-promoting; *WOX*, *WUSCHEL* related *homeobox*; *WUS*, *WUSCHEL*; XVE, LexA-VP16-estrogen receptor chimeric transcription activator.

This article can be found at <http://www.jspcmb.jp/>

Published online March 28, 2018

remains to be clarified whether the RP effect of *WUS* is applicable to more species.

The RP effect of *WOX2*, *WOX8* and *WOX9* on explants cultured *in vitro* remains unknown. Here, we described a two-step culture system using tobacco leaf segments to estimate the RP effect of transgenes and determine remarkable instances where the coexpression of *WOX* gene pairs confer this RP effect on the explants. Additionally, we showed that the coexpression was effective on free cell populations derived from leaf explants, which promoted the development of embryo-like structures.

Materials and methods

Vectors and bacteria

Total RNA was prepared from an inflorescence of *A. thaliana* (Columbia) using TRIzol (Life Technologies, Carlsbad, CA) and used for cDNA synthesis using M-MuLV reverse transcriptase (New England Biolabs, Ipswich, MA) according to the manufacturers' manuals. The cDNAs corresponding to *WOX2*, *WOX8* and *WOX9* were amplified by RT-PCR using PrimeStar MAX DNA polymerase (Takara, Kusatsu, Shiga) and primer sets containing sequences for generating restriction sites shown in lower case as follows: 5'-acacacctcagATG GAA AAC GAA GTA AAC GCA GGA A and 5'-tctctcactagtTTA CAA CCC ATT ACC ATT ACT ATCCA for *WOX2*, 5'-acacacggggcccATG TCC TCC TCA AAC AAA AAT TGG C and 5'-tctctcactagtCTA AAT AAG ATA ATA GAT TGC GCC GT for *WOX8* and 5'-acacacctcagATG GCT TCT TCG AAT AGA CAC TGG and 5'-tctctcactagtCTA GAT CAG ATA GTA CGA GGCTC for *WOX9*. The amplified cDNAs for *WOX2*, *WOX8* and *WOX9* were digested with *XhoI* and *SpeI*, *ApaI* and *SpeI*, and *XhoI* and *SpeI*, respectively. The resulting fragments were ligated with pER8 (Zuo et al. 2000) digested with *XhoI* and *SpeI* or *ApaI* and *SpeI*. The three constructs were used for the transformation of XL1blue (Agilent Technology, Santa Clara, CA) on a medium with 100 mg L⁻¹ spectinomycin and the reproduced plasmids were sequenced to confirm whether their T-DNA regions were designed. These plasmids harboring each *WOX* gene under the transcriptional control of the XVE system were referred to as pER8::*WOX2*, pER8::*WOX8* and pER8::*WOX9*.

Rhizobium radiobacter AGL1 (ATCC BAA-101) that lacks RecA activity (Lazo et al. 1991) was purchased from Summit Pharmaceuticals International Corporation (Chuoku, Tokyo) and maintained according to the product sheet. The bacteria were transformed with the plasmids using an electroporator (Electro Cell Manipulator 600, BTX, San Diego, CA) under a pulse condition (1.25 kV, 129 ohm and 5.5 μF) in 50 μL of water containing 1 ng of plasmid and placed in a cuvette with 1 mm electrode distance. Transformants were screened on LB medium containing 100 mg L⁻¹ spectinomycin and 2% agar. The bacterial lines that were confirmed to be carrying the above-mentioned constructs were cultured overnight in LB

medium with 100 mg L⁻¹ spectinomycin and used for plant transformation.

Plant transformation

For the basal medium for plant growth and leaf segment culture, we used the modified Murashige and Skoog medium (mMS; Murashige and Skoog 1962) that lacked growth regulators, KI, glycine, pyridoxine and nicotinic acid, but contained thiamine at a concentration of 1 mg L⁻¹.

Leaves of young *N. tabacum* cv. Samsun were surface-sterilized, cut into segments (50 mm²) and placed in 10 mL of liquid mMS. Agroinfection was performed by adding 10 μL of overnight culture (LB medium) of transformed bacteria to the 10 mL mMS containing the leaf segments. After 16 h, the segments were rinsed with fresh medium and placed on filter papers to eliminate excess medium containing bacteria and then cultured on solidified mMS containing 10 μM of 6'-benzyladenine (BA) at 25°C in dark. To avoid the excess proliferation of bacteria, the medium was replaced with fresh medium every day for 3 days. If necessary, the segments were rinsed in liquid mMS to eliminate the excess bacteria. Subsequently, the segments were cultured on solidified mMS containing 10 μM of BA, 0.1 μM of 1-naphthaleneacetic acid (NAA), 200 mg L⁻¹ of cefotaxime for suppressing bacterial proliferation and 50 mg L⁻¹ of hygromycin B for screening tobacco transformants at 24–26°C in light. After 1 month, adventitious buds generated on the segments were excised and placed on solidified mMS containing 200 mg L⁻¹ of cefotaxime, 0.1 μM of NAA and 50 mg L⁻¹ of hygromycin B for rooting. The transformants were grown in a closed phytotron equipped only for transgenic plants (23–26°C, natural light) and their progeny and hybrids were obtained by selfing or crossing. For the demonstrative experiments, one individual per transgene was chosen and referred to as XVE::*WOX2*, XVE::*WOX8* and XVE::*WOX9*. The hybrid lines between the transformants were referred to as follows: e.g., XVE::*WOX2* × XVE::*WOX8*.

Leaf segment culture for estimating the RP effect of transgenes

The details of methods and processes used for inducing regeneration are described in the Results section. The expression inducer 17-β-estradiol (Sigma-Aldrich, St. Louis, MO) used for activating the transcription factor XVE was solubilized in dimethyl sulfoxide (DMSO) at a concentration of 10 mM and sterilized by filtration using an Omni pore membrane (Merck Millipore, Burlington, MA).

Expression analysis

Using TRIzol, RNA was extracted from leaf segments cultured in mMS containing the expression inducer at concentrations of 0, 1, or 10 μM and used for cDNA synthesis using M-MuLV reverse transcriptase. The cDNA reaction mixtures were diluted 10 times with water, added to GoTaq Master Mix (Promega, Madison, WI, USA) and analyzed on agarose gel electrophoresis. Primer sequences for each transgene are

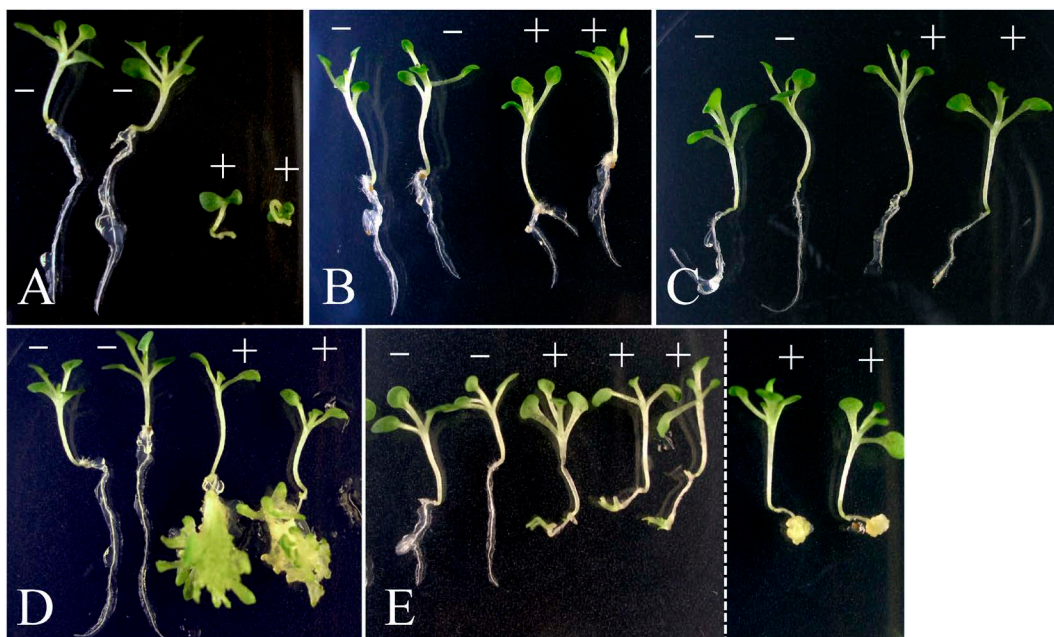


Figure 1. Effect of expression of the transgenes on seedling morphology. (A) to (C) The seeds of each transgenic individual [*XVE::WOX2* (A), *XVE::WOX8* (B) and *XVE::WOX9* (C)] were obtained through self-pollination and sown on mMS with 0.8% agar, 50 mg L⁻¹ of hygromycin B and 0 or 1 μM of β-estradiol, and then kept in day-neutral light conditions at 25°C for 3 weeks. (D, E) The seeds of two hybrid lines were obtained by crossing *XVE::WOX2* with *XVE::WOX8* (D) or *XVE::WOX9* (E) and sown as described above. (–) The two plants placed on the left in each panel were grown in the absence of the expression inducer as controls. (+) The other plants were grown in the presence of the inducer at the concentration of 1 μM. In the expression analysis (Figure 5), the two plants on the right in panel D and three plants in the center in panel E were proved to possess both transgenes *WOX2* and *WOX8* and *WOX2* and *WOX9*, respectively. The dotted line in panel E means the boundary of the original images.

described above. In expression analyses of the hybrid plants, PCR was performed by adding two sets of primer in one reaction mixture to reduce the total number of reactions.

Results

Through the agroinfection and subsequent culture, we obtained several transgenic plants for *WOX2*, *WOX8* and *WOX9* and their seeds by selfing or crossing. After expression analysis and preliminary experiments of tissue culture, we chose one transgenic plant per gene that showed a relatively high level of transgene expression in response to the inducer: *XVE::WOX2*, *XVE::WOX8* and *XVE::WOX9*. Their seeds were aseptically sown on solidified mMS supplemented with 0.8% agar, 50 mg L⁻¹ of hygromycin B and 0 or 1 μM of β-estradiol.

Morphological anomalies were not evident in the progenies of *XVE::WOX8* (Figure 1B), *XVE::WOX9* (Figure 1C) and hybrids of *XVE::WOX8* × *XVE::WOX9* (data not shown) in the presence or absence of the inducer. However, different types of anomalies were found in the progenies of *XVE::WOX2* and two hybrid lines (*XVE::WOX2* × *XVE::WOX8* and *XVE::WOX2* × *XVE::WOX9*) in the presence of the inducer. The representative morphology in each transgenic population is shown in Figure 1: dwarfing in *XVE::WOX2* progenies (Figure 1A), bulbous roots with shoot regeneration in *XVE::WOX2* × *XVE::WOX8*

(Figure 1D), roots with filamentous shoot bud-like structures (three plants centered in Figure 1E) and bulbous roots (two plants on the right side in Figure 1E) in *XVE::WOX2* × *XVE::WOX9*. Bulbous roots were also found in the back cross line of *XVE::WOX2* (data not shown), suggesting that this phenotype resulted from the expression of *WOX2* in the hemizygous genotype. In fact, the expression analysis shown in Figure 5 indicates that the two plants on the right side in Figure 1E expressed only *WOX2* in the presence of the inducer.

The aerial parts of the plants with anomalies in their roots (Figure 1) were excised and placed on solidified mMS for normal rooting. After several days, the plants that began rooting were replaced and aseptically grown on soil *in vitro* at 27–25°C under day-neutral conditions (12 h light/12 h dark) for 1 month. The resulting plants were used as materials for the leaf segment culture illustrated in Figure 2. For the progenies of *XVE::WOX2*, we used the plants grown in the absence of the inducer because plants with the dwarf phenotype (Figure 1A) did not recover their normal morphology in the subsequent culture in the absence of the inducer.

Using preliminary experiments, we designed a two-step culture method (Figure 2) to observe the effect of transgenes on the regenerative response. From young plants grown aseptically, adult round leaves (1–1.5 cm in diameter) were cut into segments of approximately 10 mm² and placed in liquid mMS containing 1 μM of

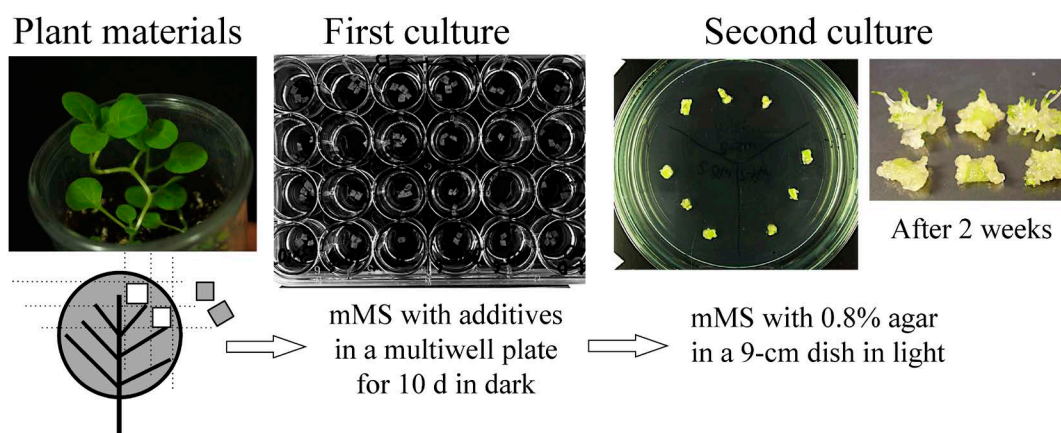


Figure 2. A two-step culture system to estimate the RP effect of transgenes. Small adult leaves of young plants grown aseptically were cut to approximately 10 mm² and placed in liquid mMS to be treated with 2,4-D (0 to 1 μ M) and β -estradiol (0 to 10 μ M) (first culture). After 10 days, explants were placed onto solidified mMS without the auxin and the inducer. And they were kept in light (second culture) for 2–4 weeks. The cultures were replaced and arranged on a dish for recording the morphological traits as shown in Figure 3.

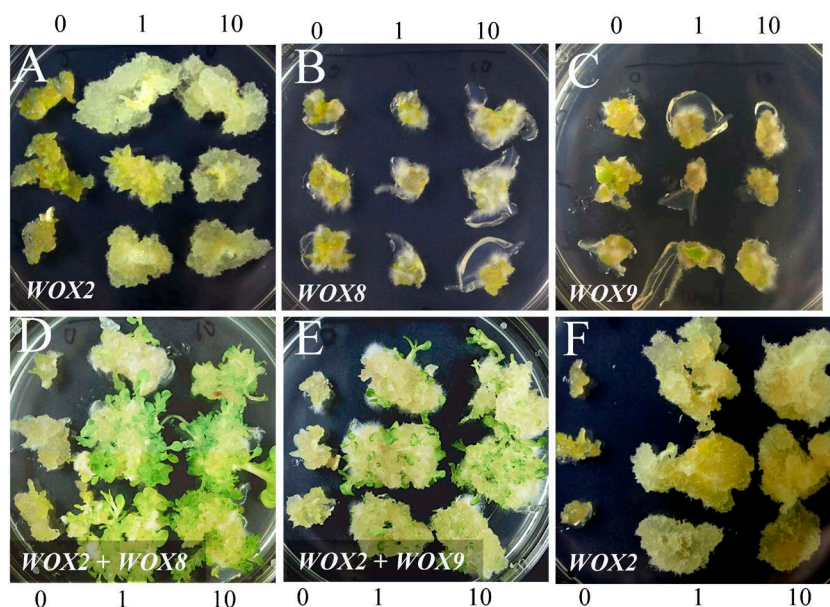


Figure 3. Effect of expression of the transgenes on morphogenesis in leaf segment culture. In each panel, the three cultures in the left, central and right columns were treated with the inducer at a concentration of 0, 1 and 10 μ M, respectively, in the first culture. (A) to (C) Explants were prepared from a progeny of the transgenic individuals *XVE::WOX2*, *XVE::WOX8* and *XVE::WOX9*, respectively. (D, E) Explants were prepared from hybrids by crossing between *XVE::WOX2* and *XVE::WOX8* and *XVE::WOX2* and *XVE::WOX9*, respectively. (F) Explants were prepared from one of the siblings by crossing between *XVE::WOX2* and *XVE::WOX9*, possessing the single *WOX2* transgene.

2,4-dichlorophenoxyacetic acid (2,4-D) and inducer at a concentration of 0, 1, or 10 μ M prepared in multiwell plates. Five leaf segments were placed on 0.4 mL of medium per well and incubated in dark at 25°C. This culture period was referred to as the first culture. After 2 days, two segments among the five were picked out from each well and used for the expression analysis as described later. Ten days after the beginning of the first culture, the remaining explants were rinsed in liquid mMS, blotted on filter papers, placed on solidified mMS and incubated in day-neutral light conditions (12 h light/12 h dark) at 25°C. This culture period was referred to as the second culture (Figure 2). After 2–4 weeks,

the cultures from each individual were replaced and arranged on a dish for recording morphological traits as shown in Figure 3.

In the culture of leaf segments from *XVE::WOX2* × *XVE::WOX8* and *XVE::WOX2* × *XVE::WOX9*, we found many shoots accompanied with calluses generated on the explants treated with the inducer at a concentration of 1 or 10 μ M in the first culture (Figure 3D, E). In the early stage of the second culture, the regenerants were easily removed from the cultured tissues, suggesting that they were not tightly connected to the original tissue (Figure 4). They possessed no root, but showed vigorous growth and root development on solidified mMS (data

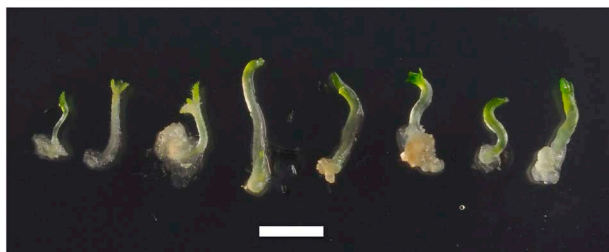


Figure 4. Morphology of the plantlets separated from the cultures developing regenerants in the second culture. The original explants were derived from the hybrid by crossing between *XVE::WOX2* and *XVE::WOX8*. Note the hypocotyl-like structure in each plantlet. Bar, 5mm.

not shown). No regeneration was observed in the progenies of *XVE::WOX2*, *XVE::WOX8* and *XVE::WOX9* (Figure 3A to C). In the explants from the progenies of *XVE::WOX2*, the growth of the callus was remarkable in response to the inducer but green spots were not observed (Figure 3A). An identical response was observed in the culture from one of the two plants on the right side in Figure 1E that possesses the single transgene *WOX2* (Figure 3F). The explants treated with or without the inducer in the first culture of the *XVE::WOX8* or *XVE::WOX9* progeny (Figure 3B, C) showed no morphological features that were similar to the seedlings (Figure 1B, C). A similar result was observed in the cultures from the hybrid *XVE::WOX8*×*XVE::WOX9* and also wild type (data not shown).

For the expression analysis by RT-PCR, some leaf segments in the first culture were picked from the multiwell plates and used for RNA preparation. The expression levels of the transgenes in the presence and absence of the inducer are shown in Figure 5A and B, respectively. As shown at the bottom of each panel, the total RNA from each sample showed major bands of ribosomal RNA and was thus suitable for RT-PCR. In the absence of the inducer (Figure 5B), the expression levels of transgenes were very low (lanes 1'–7' and 9'), except lane 8'. We speculated that this was due to occasional carryover of a small amount of the inducer from the medium for sowing. The explants from the progenies of *XVE::WOX2*, *XVE::WOX8* and *XVE::WOX9* showed single bands corresponding to the transcripts for *WOX2*, *WOX8*, and *WOX9*, respectively (Figure 5A, lanes 7–9). In case of hybrids (Figure 5A, lanes 1–4), two bands were detected in each lane, corresponding to the transcripts for *WOX2* and *WOX8* (lanes 1 and 2) or *WOX2* and *WOX9* (lanes 3 and 4). In case of two of the three plants shown in the center of Figure 1E, two bands were detected in each lane, corresponding to the transcripts for *WOX2* and *WOX9* (Figure 5A, lanes 3 and 4). In two plants possessing bulbous roots (shown on the right side of Figure 1E), only a single band corresponding to the transcripts for *WOX2*, but not *WOX9*, was detected

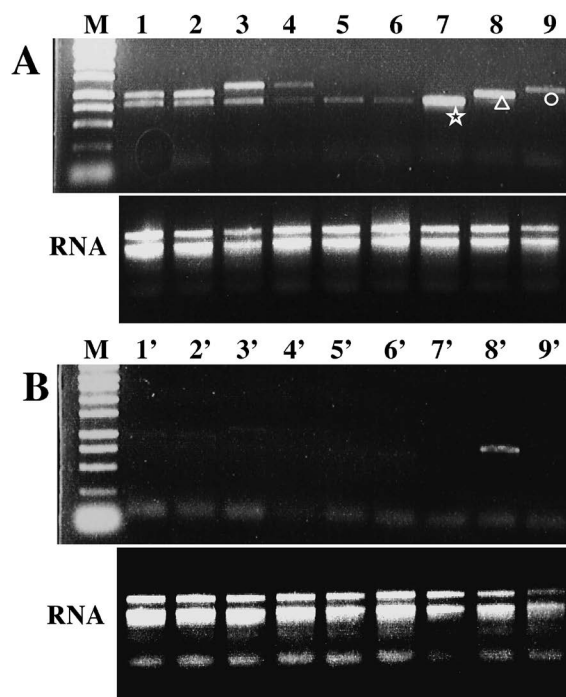


Figure 5. RT-PCR analysis of transgenes expressed in the first culture. Total RNA was extracted from the leaf segments cultured for 2 day in the presence (A) or absence (B) of the expression inducer. The pattern of RT-PCR products and total RNA are shown in the top and bottom in each panel, respectively. Lanes 1, 1', 2, 2', hybrids of *XVE::WOX2*×*XVE::WOX8*; lanes 3, 3', 4, 4', hybrids of *XVE::WOX2*×*XVE::WOX9*; lanes 5, 5', 6, 6', siblings of *XVE::WOX2*×*XVE::WOX9* but not hybrid; lanes 7, 7', progeny of *XVE::WOX2*; lanes 8, 8', progeny of *XVE::WOX8*; lanes 9, 9', progeny of *XVE::WOX9*; M, 250 bp ladder marker. Each reaction mix for 1–6 and 1'–6' contained two sets of primers for the expected transgenes. The asterisk, triangle and circle indicate the amplified products corresponding to the coding sequences of *WOX2*, *WOX8* and *WOX9*, respectively.

(Figure 5A, lanes 5 and 6). This indicated that the differences in seedling morphology between the dwarf plants (Figure 1A) and those possessing bulbous roots (Figure 1E) were probably due to *WOX2* transcription at different expression levels.

In the culture of leaf segments, we occasionally found a small number of single cells in the basal medium (mMS with 1 μM of 2,4-D) of the first culture after transferring the explants to the second culture (Figure 6A). These cells seemed to be derived from the mesophyll tissue or root primordia developed around vascular bundles in the explants. We continued culturing for 1 month, during which the single cells proliferated and generated free cell populations, showing an aspect similar to tobacco BY-2 cells (Nagata et al. 1992), although with a much lower division rate (Figure 6B). Such free cell population was observed in the culture of each transgenic plant. To observe their response to the expression inducer, we added an equal volume of fresh basal medium (mMS with 1 μM of 2,4-D) to the culture and divided it into two wells that already contained one thousandth volume

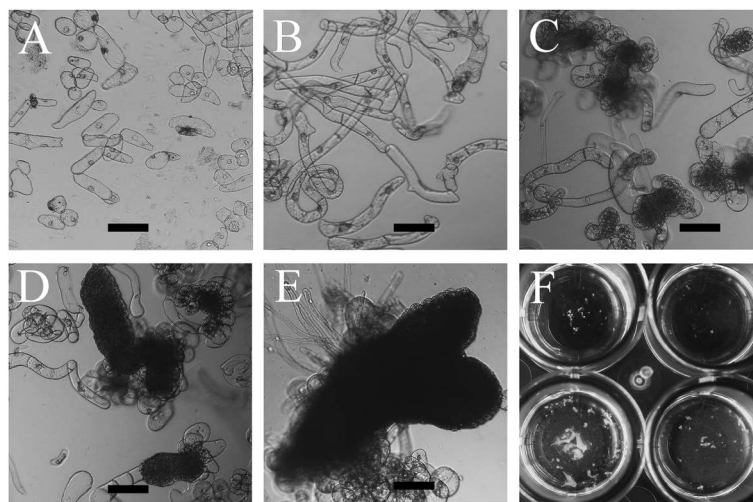


Figure 6. Aspects of development of embryo-like structures from free cells derived from leaf explants of *XVE::WOX2*×*XVE::WOX8* hybrid. (A) Free cells released from leaf segments in the first culture (mMS with 1 μ M of 2,4-D). (B) Cell growth and division were observed in the subsequent culture. (C) Cell clusters were generated after adding the expression inducer. (D) Cell clusters with a smooth surface appeared in the subsequent culture. (E) Embryo-like structures developed in the process of diluting the medium with fresh mMS. (F) Aspects of the culture wells with developing plantlets. The diameter of the well is 1 cm. Bars, 200 μ m.

of a β -estradiol (1 mM in DMSO) or DMSO (control) drop; the final concentrations of β -estradiol and DMSO were 1 μ M and 0.1%, respectively. After incubating these cultures at 25°C in dark for 2 weeks, we found cell clusters with high optical density only in the presence of the inducer (Figure 6C). Some cluster surfaces became smooth and compacted due to the reduction of cell size accompanying active cell division (Figure 6D). The generation of cell cluster was observed in the culture of the *XVE::WOX2*×*XVE::WOX8* hybrid and *XVE::WOX2*×*XVE::WOX9* hybrid, but not *XVE::WOX2*, *XVE::WOX8* and *XVE::WOX9* progeny.

To develop the embryo-like structures into plantlets, it seemed feasible to decrease the concentrations of the inducer and auxin in the medium, considering the conditions for regeneration in the leaf segment culture. Therefore, we added an equal volume (approximately 200 μ L) of fresh mMS to the culture well and removed an equal volume of the supernatant to keep the culture volume constant. This procedure was repeated every 3 days to decrease the concentrations of the auxin and inducer. After 2 weeks, several plantlets were observed in some wells (Figure 6E, F). The embryo-like structure and regeneration was observed in the culture of the *XVE::WOX2*×*XVE::WOX8* hybrid but not *XVE::WOX2*×*XVE::WOX9* hybrid so far. However, it seems possible to induce regeneration also in the latter hybrid by improving the culture conditions and the timing of operation through some more trials.

Discussion

In plant biotechnology, it is important to find genes whose ectopic expression induces regenerative responses

in cells or tissues because such genes may be useful for producing transgenic plants more efficiently, especially in crops that are recalcitrant to the traditional regeneration protocol requiring cytokinin. RP genes have been previously found in many studies of *A. thaliana*, in which overexpression of these genes caused shoot formation or embryogenesis (Motte et al. 2014; Radoeva and Weijers 2014). As described in the Introduction, *WUS* may be a prime candidate for an RP gene applicable to a wide range of species. Several attempts have been reported for genes other than *WUS* using *BABY BOOM* in tobacco (Srinivasan et al. 2007), pepper (Heidmann et al. 2011) and cacao (Florez et al. 2015); *LEAFY COTYLEDON 1* (*LEC1*) and *LEC2* in tobacco (Guo et al. 2013); *LEC1* homolog in conifer (Klimaszewska et al. 2010; Uddenberg et al. 2016); *AGAMOUS-LIKE15* in soybean (Harding et al. 2003). However, whether these results are widely applicable to other cultivars or relative species remains unclear and the number of RP genes is still limited. Taken together, there is immediate need to identify additional RP genes.

In this study, we showed for the first time that the coexpression of a pair of *WOX*s in combinations *WOX2* and *WOX8* or *WOX2* and *WOX9* conferred an RP effect on the leaf segments. This was sufficiently supported by a series of experiments demonstrated in the Results section and its reproducibility was confirmed through the similar experiments using several progeny and hybrid lines derived from the plants independently transformed with each gene. As mentioned in the Introduction section, these genes and their homologs are expressed in the early stages of zygotic or somatic embryogenesis in *A. thaliana* and other species. Therefore, it seems reasonable that their ectopic expression causes the RP effect, resulting

in organogenesis or embryogenesis in the seedling or explants in vitro. To apply this mechanism to actual transformation, we designed a binary vector harboring both *WOX2* and *WOX8* under the control of the XVE system and proved its functionality in *A. thaliana* and few *Nicotiana* species (data not shown).

As shown in Figure 2, we developed an assay system to estimate the RP effect induced by the expression of the transgenes by culturing leaf segments prepared from young transgenic plants. This consisted of two phases: the first period for inducing transgene expression in the presence of β -estradiol and second for inducing regeneration. In case of *A. thaliana* transgenic for *WUS* (Zuo et al. 2002a), it was noted that continuous expression of the transgene was not suitable for regeneration. Also, in our experiments, when the explants were kept in the first culture medium throughout, the color of the calluses generated on the explants darkened and the frequency of regeneration was reduced (data not shown).

In the presence of both the regulators (auxin and inducer), the cells around the edge of the explants seemed to proliferate and develop to primordia of the origin of regeneration. The primordia then developed into plantlets in the absence of both the regulators. An example of a developmental event that requires such a temporal change in growth regulators is well known in carrot somatic embryogenesis (Fujimura 2014; Komamine et al. 2005); i.e., exogenous auxin is required during phase 0 in which the competent single cells (state 0) develop into embryogenic cell clusters (state 1), but not in the subsequent process (phases 1–3) in which cell clusters develop into globular, heart and torpedo stages. The progression from single cell (state 0) to multicellular clumps with embryogenic competency (state 1) could be demonstrated in a culture system established by Nomura and Komamine (1985). In the present study, we observed a similar process in generating embryo-like structures in freely suspended cell populations derived from tobacco leaf segments (Figure 6B to D). This process seems to be corresponding to phase 0 (state 0 and 1) in the carrot system and is the first example of tobacco somatic embryogenesis in a free cell population.

Since the classic studies by Skoog and Miller (1957) and Steward et al. (1958), tobacco and carrot have been used as model species in the field of cell and tissue culture. Interestingly, it is well known that the two species show different regeneration behaviors in vitro; the explants from the former easily develop adventitious shoots in response to cytokinin, but rarely show somatic embryogenesis, whereas those from the latter easily develop embryogenic calluses in response to auxin, but rarely develop adventitious shoots. There are some reports regarding somatic embryogenesis in tobacco tissue culture (Gill and Saxena 1993; Guo et al. 2013;

Pathi et al. 2013; Srinivasan et al. 2007); however, the researchers may have observed organogenesis but not embryogenesis, judging from their use of shoot inducers (cytokinin) in the culture and morphological aspect and greenish color shown in the figures in their reports. Previously, in tobacco tissue and cell culture, cytokinin was essential for regeneration with the exception of pollen embryogenesis (Kyo et al. 2014). Therefore, it is interesting that the coexpression of two *WOX* genes induced regeneration from the explants and freely suspended cells in the absence of cytokinin, suggesting crucial roles of some orthologous *WOX* genes for embryogenic response in carrot cells and tobacco pollen in vitro.

Acknowledgements

We thank the previous laboratory members H. Sakimori, M. Tada, Y. Kawanishi and T. Okada for their cooperation in this study. We also thank Dr. K. Higashi at Teikyo University of Science for the discussion about somatic embryogenesis in *A. thaliana*. This study was partly supported by a JSPS KAKENHI Grant (No. 24568007).

References

- Arroyo-Herrera A, Gonzalez AK, Moo RC, Quiroz-Figueroa FR, Loyola-Vargas VM, Rodriguez-Zapata LC, Hondt CB, Suarez-Solis VM, Castano E (2008) Expression of *WUSCHEL* in *Coffea canephora* causes ectopic morphogenesis and increases somatic embryogenesis. *Plant Cell Tissue Organ Cult* 94: 171–180
- Bouchabké-Coussa O, Obellianne M, Linderme D, Montes E, Maia-Grondard A, Vilaine F, Pannetier C (2013) Wuschel overexpression promotes somatic embryogenesis and induces organogenesis in cotton (*Gossypium hirsutum* L.) tissues cultured in vitro. *Plant Cell Rep* 32: 675–686
- Breuninger H, Rikirsch E, Hermann M, Ueda M, Laux T (2008) Differential expression of *WOX* genes mediates apical-basal axis formation in the *Arabidopsis* Embryo. *Dev Cell* 14: 867–876
- Chung K, Sakamoto S, Mitsuda N, Suzuki K, Ohme-Takagi M, Fujiwara S (2016) *WUSCHEL-RELATED HOMEODOMAIN 2* is a transcriptional repressor involved in lateral organ formation and separation in *Arabidopsis*. *Plant Biotechnol* 33: 245–253
- Costanzo E, Trehin C, Vandenbussche M (2014) The role of *WOX* genes in flower development. *Ann Bot (Lond)* 114: 1545–1553
- Florez SL, Erwin RL, Maximova SN, Guiltinan MJ, Curtis WR (2015) Enhanced somatic embryogenesis in *Theobroma cacao* using the homologous *BABY BOOM* transcription factor. *BMC Plant Biol* 15: 121–133
- Fujimura T (2014) Carrot somatic embryogenesis: A dream comes true? *Plant Biotechnol Rep* 8: 23–28
- Gambino G, Minuto M, Boccacci P, Perrone I, Vallania R, Gribaudo I (2011) Characterization of expression dynamics of *WOX* homeodomain transcription factors during somatic embryogenesis in *Vitis vinifera*. *J Exp Bot* 62: 1089–1101
- Gill R, Saxena PK (1993) Somatic embryogenesis in *Nicotiana tabacum* L.: Induction by thidiazuron of direct embryo differentiation from cultured leaf discs. *Plant Cell Rep* 12: 154–159
- Guo F, Liu C, Xia H, Bi Y, Zhao C, Zhao S, Hou L, Li F, Wang X (2013) Induced expression of *AtLECI* and *AtLEC2* differentially

- promotes somatic embryogenesis in transgenic tobacco plants. *PLoS ONE* 8: e71714
- van der Graaff E, Laux T, Rensing SA (2009) The WUS homeobox-containing (WOX) protein family. *Genome Biol* 10: 248
- Haecker A, Gross-Hardt R, Geiges B, Sarkar A, Breuninger H, Herrmann M, Laux T (2004) Expression dynamics of *WOX* genes mark cell fate decisions during early embryonic patterning in *Arabidopsis thaliana*. *Development* 131: 657–668
- Harding EW, Tang W, Nichols KW, Fernandez DE, Perry SE (2003) Expression and maintenance of embryogenic potential is enhanced through constitutive expression of *AGAMOUS-Like 15*. *Plant Physiol* 133: 653–663
- Hedman H, Zhu T, von Arnold S, Sohlberg JJ (2013) Analysis of the *WUSCHEL-RELATED HOMEBOX* gene family in the conifer *Picea abies* reveals extensive conservation as well as dynamic patterns. *BMC Plant Biol* 13: 89
- Heidmann I, de Lange B, Lambalk J, Angenent GC, Boutilier K (2011) Efficient sweet pepper transformation mediated by the *BABY BOOM* transcription factor. *Plant Cell Rep* 30: 1107–1115
- Klimaszewska K, Pelletier G, Overton C, Stewart D, Rutledge RG (2010) Hormonally regulated overexpression of *Arabidopsis WUS* and conifer *LEC1 (CHAP3A)* in transgenic white spruce: Implications for somatic embryo development and somatic seedling growth. *Plant Cell Rep* 29: 723–734
- Komamine A, Murata N, Nomura K (2005) 2004 SIVB Congress symposium proceeding: mechanisms of somatic embryogenesis in carrot suspension cultures: Morphology, physiology, biochemistry, and molecular biology. *In Vitro Cell Dev Biol Plant* 41: 6–10
- Kyo M, Nagano A, Yamaji N, Hashimoto Y (2014) Timing of the G1/S transition in tobacco pollen vegetative cells as a primary step towards androgenesis in vitro. *Plant Cell Rep* 33: 1595–1606
- Laux T, Mayer KFX, Berger J, Jurgens G (1996) The *WUSCHEL* gene is required for shoot and floral meristem integrity in *Arabidopsis*. *Development* 122: 87–96
- Lazo GR, Stein PA, Ludwig RA (1991) A DNA transformation-competent *Arabidopsis* genomic library in *Agrobacterium*. *Biotechnology (N Y)* 9: 963–967
- Liu B, Wang L, Zhang J, Li J, Zheng H, Chen J, Lu M (2014) *WUSCHEL related homeobox* genes in *Populus tomentosa*: Diversified expression patterns and a functional similarity in adventitious root formation. *BMC Genomics* 15: 296
- Mayer KFX, Schoof H, Haecker A, Lenhard M, Jurgens G, Laux T (1998) Role of *WUSCHEL* in regulating stem cell fate in the *Arabidopsis* shoot meristem. *Cell* 95: 805–815
- Motte H, Vereecke D, Geelen D, Werbrouck S (2014) The molecular path to in vitro shoot regeneration. *Biotechnol Adv* 32: 107–121
- Murashige T, Skoog F (1962) A revised medium for rapid growth and bio assays with tobacco tissue cultures. *Physiol Plant* 15: 473–497
- Nagata T, Nemoto Y, Hasezawa S (1992) Tobacco BY-2 cell line as the “HeLa” cell in the cell biology of higher plants. *Int Rev Cytol* 132: 1–30
- Nomura K, Komamine A (1985) Identification and isolation of single cells that produce somatic embryos at a high frequency in a carrot suspension culture. *Plant Physiol* 79: 988–991
- Pathi KM, Tula S, Tuteja N (2013) High frequency regeneration via direct somatic embryogenesis and efficient *Agrobacterium*-mediated genetic transformation of tobacco. *Plant Signal Behav* 8: e24354
- Palovaara J, Hallberg H, Stasolla C, Hakman I (2010) Comparative expression pattern analysis of *WUSCHEL-related homeobox 2 (WOX2)* and *WOX8/9* in developing seeds and somatic embryos of the gymnosperm *Picea abies*. *New Phytol* 188: 122–135
- Palovaara J, Saiga S, Weijers D (2013) Transcriptomics approaches in the early *Arabidopsis* embryo. *Trends Plant Sci* 18: 514–521
- Radoeva T, Weijers D (2014) A roadmap to embryo identity in plants. *Trends Plant Sci* 19: 709–716
- Rashid SZ, Yamaji N, Kyo M (2007) Shoot formation from root tip region: A developmental alteration by *WUS* in transgenic tobacco. *Plant Cell Rep* 26: 1449–1455
- Rupps A, Raschke J, Rummeler M, Linke B, Zoglauer K (2016) Identification of putative homologs of *Larix decidua* to *BABY BOOM (BBM)*, *LEAFY COTYLEDON1 (LEC1)*, *WUSCHEL-related HOMEBOX2 (WOX2)* and *SOMATIC EMBRYOGENESIS RECEPTOR-like KINASE (SERK)* during somatic embryogenesis. *Planta* 243: 473–488
- Skoog F, Miller CO (1957) Chemical regulation of growth and organ formation in plant tissue cultured in vitro. *Symp Soc Exp Biol* 11: 118–130
- Steward FC, Mapes MO, Mears K (1958) Growth and organized development of cultured cells. II: Organization in cultures grown from freely suspended cells. *Am J Bot* 45: 705–708
- Solis-Ramos LY, Gonzalez-Estrada T, Nahuath-Dzib S, Zapata-Rodriguez LC, Castano E (2009) Overexpression of *WUSCHEL* in *C. chinense* causes ectopic morphogenesis. *Plant Cell Tissue Organ Cult* 96: 279–287
- Srinivasan C, Liu Z, Heidmann I, Supena EDJ, Fukuoka H, Joosen R, Lambalk J, Angenent G, Scorza R, Custers JBM, et al. (2006) Heterologous expression of the *BABY BOOM AP2/ERF* transcription factor enhances the regeneration capacity of tobacco (*Nicotiana tabacum* L.). *Planta* 225: 341–351
- Ueda M, Laux T (2012) The origin of the plant body axis. *Curr Opin Plant Biol* 15: 578–584
- Uddenberg D, Abrahamsson M, von Arnold S (2016) Overexpression of *PaHAP3A* stimulates differentiation of ectopic embryos from maturing somatic embryos of Norway spruce. *Tree Genet Genomes* 12: 18
- Wu X, Chory J, Weigel D (2007) Combinations of *WOX* activities regulate tissue proliferation during *Arabidopsis* embryonic development. *Dev Biol* 309: 306–316
- Zhou Y, Liu X, Engstrom EM, Nimchuk ZL, Pruneda-Paz JL, Tarr PT, Yan A, Kay SA, Meyerowitz EM (2015) Control of plant stem cell function by conserved interacting transcriptional regulators. *Nature* 517: 377–380
- Zhu T, Moschou PN, Alvarez JM, Sohlberg JJ, von Arnold S (2016) *WUSCHEL-RELATED HOMEBOX 2* is important for protoderm and suspensor development in the gymnosperm Norway spruce. *BMC Plant Biol* 16: 19
- Zuo J, Niu QW, Chua N (2000) An estrogen receptor-based transactivator XVE mediates highly inducible gene expression in transgenic plants. *Plant J* 24: 265–273
- Zuo J, Niu Q, Frugis G, Chua N (2002a) The *WUSCHEL* gene promotes vegetative-to-embryonic transition in *Arabidopsis*. *Plant J* 30: 349–359
- Zuo J, Niu QW, Ikeda Y, Chua NH (2002b) Marker-free transformation: Increasing transformation frequency by the use of regeneration-promoting genes. *Curr Opin Biotechnol* 13: 173–180