



# HHS Public Access

Author manuscript

*Cancer Res.* Author manuscript; available in PMC 2020 June 15.

Published in final edited form as:

*Cancer Res.* 2019 June 15; 79(12): 3011–3027. doi:10.1158/0008-5472.CAN-19-0458.

## Defining the Hallmarks of Metastasis

Danny R. Welch, Ph.D.<sup>1</sup> and Douglas R. Hurst, Ph.D.<sup>2</sup>

<sup>1</sup>Department of Cancer Biology and The University of Kansas Cancer Center, The University of Kansas Medical Center Kansas City, KS 66160

<sup>2</sup>Department of Pathology and Comprehensive Cancer Center, University of Alabama at Birmingham, Birmingham, AL 35294-0019

### Abstract

Metastasis is the primary cause of cancer morbidity and mortality. The process involves a complex interplay between intrinsic tumor cell properties as well as interactions between cancer cells and multiple microenvironments. The outcome is the development of a nearby or distant discontinuous secondary mass. To successfully disseminate, metastatic cells acquire properties in addition to those necessary to become neoplastic. Heterogeneity in mechanisms involved, routes of dissemination, redundancy of molecular pathways that can be utilized, and the ability to piggyback on the actions of surrounding stromal cells makes defining the hallmarks of metastasis extraordinarily challenging. Nonetheless, this review identifies four distinguishing features that are required: motility & invasion, ability to modulate the secondary site or local microenvironments, plasticity, and ability to colonize secondary tissues. By defining these first principles of metastasis, we provide the means for focusing efforts on the aspects of metastasis that will improve patient outcomes.

### Keywords

adhesion; colonization; dissemination; extracellular matrix; extravasation; hallmark; heterogeneity; intravasation; invasion; metastasis; microenvironment; motility; plasticity; transport; tumor progression

---

Medical practitioners have diagnosed neoplasms for over four thousand years and have recognized that the ability to dissociate, disseminate and colonize discontinuous secondary sites (i.e., metastasize), is the most lethal attribute of neoplastic cells. In fact, cure of most cancers is probable whenever diagnosis occurs before cells have spread beyond the tissue of origin; otherwise, cancer is often referred to as incurable (1–3).

In their seminal analysis, Hanahan and Weinberg described the ‘hallmarks of cancer’ in which they identified several intrinsic characteristics of neoplastic cells – immortality, genomic instability, resisting cell death, altered metabolism and invasion/metastasis. They

---

**To whom correspondence should be addressed:** D.R. Welch, Department of Cancer Biology, The University of Kansas Cancer Center, 3901 Rainbow Blvd. Mailstop 1071, Kansas City, KS 66160, USA. DWelch@KUMC.edu or D.R. Hurst, Department of Pathology, The University of Alabama at Birmingham, Birmingham, AL 35294, USA. douglashurst@uabmc.edu.

**Conflict of interest:** The authors declare no conflicts of interest.

included several critical aspects of how cancer cells interact with the stroma – sustained angiogenesis, promote inflammation, immune evasion, resistance to growth inhibition, and relative autonomy. Together, these hallmarks and enabling characteristics define critical elements for cellular transformation (4,5). Their conceptual framework has provided clarity regarding the essential characteristics of neoplastic transformation. Yet, among those hallmarks, the only defining factor that distinguishes cancer from a mere tumor is invasion of at least one cell from the primary lump through a basement membrane (6) keeping in mind that invasion is necessary, but not sufficient, to develop metastasis. Metastasis is thought to be the ultimate manifestation of a neoplastic cell's evolution toward becoming autonomous from the host. Upon activating the cancer hallmarks, neoplastic cells continue to evolve. *Neoplastic progression* is the process of evolving a normal cell into a life-threatening metastatic cancer cell (7–9) (Figure 1).

Based upon clinical and experimental observations, tumor cells acquire the hallmarks of cancer from a pre-malignant, transformed state and pass through that benign phase before acquiring invasive/malignant characteristics (10). When viewed at an organismal level, tumor progression typically follows a sequence. Before becoming tumorigenic, cells lose the ability to differentiate fully; are no longer contact inhibited; are not anchorage dependent; and are genetically unstable. Masses typically go through an expansile phase in the absence of invasion. Cells are already pleomorphic at this stage and the mass is often encapsulated by a dense fibrous network (i.e., desmoplasia (11,12)). With successive generations, variants arise, and selection changes population composition. Subsets of the neoplastic cells acquire the ability to escape through a basement membrane, the defining hallmark of malignancy. Subsets of invasive cells then acquire the ability to detach from the primary tumor and move elsewhere to form metastases. Acquisition of traits can occur in any order, but successful transition to malignancy requires acquisition of all neoplastic traits. Similarly, the ability of cells to complete all steps in the metastatic cascade requires them to acquire certain characteristics that are superimposed upon the ‘hallmarks of cancer’ (Figure 1).

The word *metastasis* was first recorded in the 1580's from a combination of the Greek prefix or preposition “meta” (change, alteration, but mostly concerned with the result of the change) and “stasis” (a state of equilibrium or standing). Thus, metastasis refers to both a process and the outcome of that process. In this review, we recognize that both are inextricably linked, and that precise use of terminology is essential to advance the field and, most importantly, clinical outcomes. While the process is important to understand, the outcome is the most critical aspect since it is the secondary mass(es) that cause clinical concern. In the end, our objective is to define the characteristics of both the process of and the eventual development of metastatic lesions. By definition, metastasis is the process of spreading to a nearby or distant, discontinuous secondary site and the establishment of macroscopic secondary foci (13). This definition provides the framework for the proposed hallmarks of metastasis discussed below and provides critical clarity with regard to patient outcomes and parameters.

An additional objective of this review is that the proposed hallmarks of metastasis will provide a conceptual framework that can be used to accelerate development of therapies designed to reduce cancer deaths (3,14). An underlying principle is that understanding the

foundational biology is key to developing preventative strategies or treatments (15). So, upon defining hallmarks, we will begin to assess their tractability for diagnosis and/or prognosis.

Just as medicine has evolved toward recognition that neoplasia is a cellular disease and has further advanced to understand the molecular underpinnings of neoplastic initiation, it is now recognized that metastases represent distinct and unique subsets of cells that emigrated from the primary tumor and are behaviorally, genetically and biochemically distinct from the cells remaining at the site of tumor origin (1). Each metastatic cell must accomplish an entire series of sequential steps, termed the metastatic cascade (16). In order to define metastatic hallmarks, a detailed look at how the process of metastasis occurs is prerequisite.

At its core, metastasis requires the dissemination of cells away from the originating tumor. Since the route that results in the most widely disseminated pattern is via the bloodstream (i.e., hematogenous), many researchers and clinicians default to this being the route of metastatic spread. Nothing could be further from the truth (17). Metastatic cells enter not only the cardiovascular system. Some tumor cells migrate along nerves (17–19), along the basal side of endothelial cells (20) never entering the lumen. Others spread through the lymphatic vessels, or across coelomic cavities. Many textbooks still pay homage to the notion that carcinomas spread primarily via lymphatics, while sarcomas spread primarily through the vasculature. Importantly, lymphatics and blood vasculature are interconnected and there can be transit between the two compartments.

Critically, the defining hallmark of metastasis is development of any secondary mass that is no longer directly connected to the originating tumor, regardless of the route the cell(s) took to get there. Peritoneal metastases from ovarian carcinoma are as lethal as a brain metastasis from melanoma, though arising via different routes. Therefore, it is incumbent upon a correct understanding of the metastatic process to recognize that false oversimplifications do not accurately reflect myriad clinical situations. We will illustrate key principles involved in blood-borne metastasis as a launching point for defining the critical characteristics that are involved in any route of metastatic spread.

## **The process of hematogenous metastasis: the metastatic cascade**

The first step in defining the characteristics of metastatic cells is to understand how they arose. Just as most tumors are clonal in origin (reviewed in (7,8,21)), almost all metastases arise from a single cell (22–26). By the time a cancer mass is clinically detectable, it is usually comprised of  $10^{10}$  or  $10^{11}$  cells (a cubic centimeter of tissue contains  $\sim 10^9$  cells). To get to this size, tumors must recruit a vasculature via angiogenesis (27), co-opt already existing vasculature (28–31) or form tubes that anastomose with capillaries (32).

Within the tumor, cells are morphologically, biochemically and genetically heterogeneous (33–35) (Figure 2 - #1). Behavioral differences can be due to genetic, epigenetic, positional, or temporal variations (33). Genetic heterogeneity refers to the inherent properties of tumor cells themselves and is demonstrated experimentally by isolation of relatively stable single cell clones that differ from each other for a given phenotype. Epigenetic heterogeneity refers

to transient chemical modifications of DNA and/or chromatin that lead to the selective spatio-temporal regulation of gene transcription for a given cell due to environmental conditions (e.g., proximity to O<sub>2</sub>, pH, growth factors, cytokines, chemokines, etc.).

The existence of heterogeneous tumor cells has been described for more than a century (33,34). Next generation sequencing and single cell analyses have provided a molecular explanation for some of the variability (36–39). But certain tenets remain consistent: most tumors and metastases are clonally derived (22,26,40,41); heterogeneity is a consistent characteristic of every tumor (7); heterogeneity exists for virtually every phenotype found in cancer (7); variants within a tumor arise independently (24) and appear to retain the capacity for self-replication and genomic instability (42,43). Isaiah “Josh” Fidler and Margaret Kripke tested whether metastatic cells arose from primary tumors using combinations of cloning and Luria-Delbrück fluctuation analysis (44). Single cell clones isolated from a single tumor varied considerably in their metastatic potentials. Continuous culture of poorly metastatic cells yielded subpopulations that were highly metastatic and vice versa. In other words, the clonal populations did not remain homogeneous. Similar results were obtained *in vivo*.

At the molecular level, most genetic changes that are prevalent in later stages of tumor progression are associated with tumorigenesis, invasiveness and metastasis (24). The complexity of tumor progression illustrates that a single genetic change is insufficient to render a cell metastatic. Combinations of genetic and epigenetic changes are required to progress or be used as prognostic tools (45,46). Additionally, as we discuss below, individual cells can utilize signals from surrounding cells (both tumor and stromal) to successfully progress. The challenge is sorting between driver, passenger and hitchhiker mutations.

Peter Nowell first postulated that genomic instability is the driving force for neoplastic progression, a concept which has been supported by abundant data (47). As new tumor cell subpopulations arise, selective pressures imposed by competing tumor cells as well as host response and microenvironmental conditions lead to co-evolution of tumors and stromal cells. Importantly, single cell cloning demonstrates the existence of metastatic and non-metastatic cells within the same mass. Furthermore, isolation of metastases with repeated re-injection into amenable hosts yielded increasingly metastatic subpopulations (48,49). Therefore, the existence of metastases is the result of specialized subpopulations endowed with all of the hallmarks of the process. The distinction between tumor formation and metastasis formation is most elegantly described by the discovery of a family of genes known as metastasis suppressors (50,51). This family of molecules blocks metastases while not preventing development of a primary tumor (52). Therefore, tumor formation and metastasis formation are distinguishable phenotypes. As a result, metastasis cannot be a hallmark of all cancer cells.

However, the mutation-selection theory of tumor progression is not without its detractors. Some argue that the acquisition of invasive and metastatic behaviors is more a recapitulation of a process that occurs during embryogenesis – the epithelial:mesenchymal transition (EMT) (53). The relationship between embryogenesis and metastasis is enticingly supported by studies by Illmensee and Mintz (54) and Kulesa and colleagues (55), who injected

metastatic melanoma cells into embryos and found that the tumor cells differentiated into normal, non-tumorigenic tissues. Kasemeier-Kulesa and colleagues subsequently showed that for specific cells, responses to neural growth factor resulted in bipotent precursor cells (56).

Since invasive cells frequently dramatically change their cell shape to a non-polarized, motile, spindle shaped cell resembling a fibroblast, some hypothesize that neoplastic cells dedifferentiate to a more motile mesenchymal cell phenotype. Developmental EMT and cancer EMT are not equivalent at a molecular level yet share many common characteristics (53). Cancer EMT is characterized molecularly by the loss of epithelial-specific E-cadherin from the adherens junctions, and a switch from the expression of keratins as the major intermediate filament to the mesenchymal intermediate filament vimentin. Ultimately, epigenetic mechanisms and cellular plasticity may play significant roles in driving tumor progression toward malignancy than what can be explained solely by mutation and selection (57).

### **Establishment of a pre-metastatic niche**

The process of metastasis begins long before tumors are detectable. During growth of the primary tumor, high levels of genetic and genomic instability lead to evolution of cells so that they acquire characteristics, or manifest properties, which they normally would not (40). Based upon the selection of metastatic subpopulations from mixtures of tumor cells, acquisition of traits, at least some of them, is permanent. However, the capacity of metastatic cells to regenerate non-metastatic populations suggests that some cellular properties are transient. Throughout the process, cells adapt to new environments and respond to stimuli received from other tumor cells and stroma. They must, at least temporarily, acquire the ability to survive and accomplish each selective step of the metastatic process.

Prior to exiting the mass, cells within primary tumors communicate with other parts of the body in order to establish the so-called “pre-metastatic niche” as initially described by Rosie Kaplan and David Lyden (58–60) (Figure 2 – #1). A number of soluble factors, some of which are found inside extracellular vesicles (including exosomes and exomeres (61,62)), communicate to both hematopoietic and mesenchymal stem cell populations (63–65). Stem cells are mobilized and eventually arrive in and manipulate the secondary microenvironment (sites that will eventually become metastases) by restructuring the extracellular matrices (66) and providing an environment suitable for secondary outgrowth. It is not yet certain whether the factor(s) secreted from the primary mass come from cancer cells, stromal cells or both.

### **Motility and Invasion**

Intrinsic to the process of metastasis is the ability of tumor cells to migrate (Figure 2 – #2). As little as a decade ago, the prevailing thought was that migration was primarily a property of cytoskeletal reorganization and response to chemoattractant(s). Indeed, coordinated restructuring of the cytoplasm shifts cell shape and provides deformability for cells (67–69). Likewise, the direction of cell movement is associated with responses to attractant and repulsive stimuli (70,71). Some cells, however, can be induced to being merely hyper-motile without exhibiting directional propensity (72). Autocrine responses to motility factors [e.g.,

lysophospholipase D (autotaxin) cleavage of lysophosphatidylcholine to produce lysophosphatidic acid; hepatocyte growth factor/scatter factor (HGF/SF) interaction with its receptor, c-met] result in chemokinetic activity. Directionality of movement is the result of chemotaxis (following a soluble concentration gradient (73)) or haptotaxis (following an insoluble concentration gradient (74)) in response to a gradient of soluble or localized factors, respectively.

Ultimately, molecules regulating neoplastic motility are the same ones used by normal cells. Recognition of the diversity of motility mechanisms has grown in recent years. By far, the most common type of motility observed in histologic sections involves the migration of groups of cells (collective migration) (75). Analyses of the clusters indicate that the cells retain cell-cell adhesion and that there is communication from the leading edge and the trailing cells within each cluster (73,76).

Another type of cellular mobility usurps a normal embryologic developmental process (53). The temporary (or permanent) conversion arising from EMT results in the dissociation of a cell from its epithelial cousins (77,78). It is believed that, as cells acquire mesenchymal characteristics, they become endowed with the ability to migrate along with reduced cell-cell adhesion. Concomitantly, they also achieve stem-like characteristics necessary for repopulation at a secondary site (78,79). Later, upon seeding the secondary site, cells are thought to revert to the epithelial phenotype so that they can resume proliferative capacity. The reversion is termed the mesenchymal-epithelial transition (MET (80,81)). While there is abundant evidence that the EMT is associated with movement of multiple cell types, the non-bimodal continuum of epithelial and mesenchymal markers throughout the metastatic cascade is not fully consistent with EMT being a requirement for cell movement (82,83). Likewise, retention of cell-cell junctions is paradoxical to EMT being involved in some types of movement (84). Additional questions regarding the essential nature of the EMT in metastasis were presented by Tsuji and colleagues, who isolated and generated cells from a single tumor which were stable for either epithelial or mesenchymal characteristics (85,86). Evaluation of either cell's ability to complete the metastatic cascade when isolated was nil. However, when cells were introduced together, their properties complemented the other cells' deficiencies so that metastases resulted from both cell types. More recently, use of reporter genetic constructs were used to assess whether cells eventually colonizing secondary sites had undergone the EMT. Utilizing fluorescent reporters that turned on only after EMT-driving transcriptional regulators were activated, metastases formed from cells that had (or had not) undergone intervening EMT (87,88).

There are numerous implications of these above studies. First, each cell in a metastasis (i.e., secondary mass) is not itself necessarily endowed with every property to complete the metastatic cascade. Some cells can co-opt or complement those deficiencies with cooperating cells, either stromal or other tumor cells. Second, EMT is not essential to complete the metastatic cascade for every tumor type. This does not diminish an important role for EMT in certain tumors, but since it is not a requirement, EMT can therefore not be characterized as a hallmark of metastasis. Third, it is challenging to ascribe specific roles for EMT to the metastatic process since mesenchymal tissue derived tumors (i.e., sarcomas) are highly metastatic. Sarcomas, importantly, retain their mesenchymal characteristics after they



have seeded and populated secondary tissues, frequently the lung, obviating the reverse MET process.

Invasion, the defining feature of malignancy, is the capacity for tumor cells to disrupt the basement membrane and penetrate underlying stroma. Although invasion is required for metastasis, the ability to invade is not sufficient. Some cancers are highly aggressive, forming secondary lesions with high frequency (melanoma, pancreatic ductal adenocarcinoma, small cell carcinoma of the lung), whereas others rarely metastasize despite being locally invasive (basal cell carcinomas of the skin, glioblastoma multiforme) (89). It should be emphasized that if an invasive cell cannot complete any of the subsequent steps in the metastatic cascade, it will not form a metastasis.

Invasion requires changes to cell morphology and phenotype as well as altering the surrounding environment. During invasion, three important processes are dynamically regulated that include adhesion, extracellular matrix (ECM) re-organization, and motility. Epithelial cells normally form polarized sheets that are maintained by tight junctions and desmosomes. They are anchored to a basement membrane by hemidesmosomes and intermediate filaments, integrin contacts and organized actin in the cytoskeleton. In order to invade, cells alter cell-cell and cell-matrix adhesion while, at the same time, re-organizing ECM and cellular motility (90,91). The structural and functional proteins that regulate cell adhesion and migration are key downstream targets of oncogenes and tumor suppressor-controlled signaling pathways and provide insights into how oncogenic transformation results in progression to an invasive phenotype. Many of the proteins involved in tumor invasion have also been observed to affect other processes that are part of the hallmarks of cancer including cell survival, growth, apoptosis and angiogenesis. This highlights the intricate network of interrelated pathways controlling cell behavior (92).

Normal tissues are separated by basement membranes and fascia that compartmentalize and organize physiologic functions. Extracellular matrices provide a scaffold for the organization of cells and spatial cues that dictate cell behavior (93). Each matrix is composed of proteins, primarily triple-helical collagens and glycoproteins (e.g., laminins, fibronectin, proteoglycans). Basement membranes are specialized ECM that forms a barrier separating polarized epithelial, endothelial, and muscle cells from the underlying tissues. Interstitial matrix provides the structural characteristics of connective tissues. ECM composition varies between tissues and organs; and provides important contextual information to cellular constituents (94). In addition, the ECM interacts with many secreted molecules to serve as a repository for regulatory proteins and growth factors. Thus, the interaction of cells with ECM molecules dictates their ability for survival, growth, differentiation, and migration (95). Moreover, selective proteolysis of ECM components leads to release of fragments that further regulate protein function and may be involved in cell signaling. These factors are collectively known as matrikines (96–99).

Motility is, therefore, necessary but not sufficient to transit from a tumor to the blood. Barriers must also be traversed by cells that eventually become metastases, leading Liotta to articulate the critical elements of motility and invasion (100). Specifically, cells must attach to and create passageways through extracellular matrices. Therefore, adhesion is required for

cells to have sufficient traction to move forward, but not be so strongly adhered as to prohibit movement.

Adhesion occurs on the unique matrices of each tissue and occurs because of a number of molecules, primarily through transmembrane glycoproteins known as integrins (101–103). There are 18 alpha and 8 beta subunits that combine into specific heterodimers, each with specificity for certain ligands that mediate signals in both directions. Intracellular signaling pathways can modulate strength of cellular adhesion (inside-out signaling) and changes in cellular adhesion can alter cellular phenotype (outside-in signaling). Additionally, integrins cooperate with other cell surface molecules to mediate growth factor responses.

Extracellular matrices are remodeled by degradative enzymes produced directly by tumor cells or by tumor cell-associated cells. Proteolytic enzymes that contribute to matrix degradation and facilitate tumor cell invasion include, but not limited to, serine proteinases (plasmin, plasminogen activator, seprase, hepsin, and several kallikreins), cysteine proteinase (cathepsins B and K), aspartyl proteinase (cathepsins D and E), and metal-dependent proteinases of the matrix metalloproteinase (MMP) and a disintegrin and metalloproteinase (ADAM) families. Other matrix degrading enzymes such as heparanase, an endoglycosidase which cleaves heparin sulfate proteoglycans, and hyaluronidase cleavage of its substrate hyaluronic acid, have also been causally associated with tumor progression and invasion.

Matrix degrading enzymes can work either alone or by interacting with – activating or inactivating – each other. Expression of, and activity of, many of the 23 members of the MMP family of matrix-degrading metalloproteinases correlate with advanced cancer (104–106). Likewise, the plasminogen activator/plasmin system has been causally implicated in cancer invasion, and urokinase plasminogen activator (uPA) and plasminogen activator inhibitor-1 (PAI-1) are validated prognostic and predictive markers for breast cancer (107,108).

Activity cascades are important regulators of proteolytic function, protease degradation, and activation. The cascades may paradoxically also include endogenous inhibitors, including the tissue inhibitors of metalloproteinases (TIMPs), serine proteinase inhibitors (SERPINs), and cysteine protease inhibitors (CYSTATINs). As an example, pro-MMP-2 conversion to active MMP-2 requires the activity of MT1-MMP (MMP-14), a transmembrane MMP that is activated by the prohormone convertase family member furin, and TIMP-2. Stoichiometry of these molecules is critical to balance function. Other proteolytic cascades can be intertwined during the degradation of ECM, e.g., cathepsin(s) → uPA → plasmin → MMP. Importantly, the notion that proteolytic enzymes function exclusively to break down physical ECM barriers has been debunked by numerous studies demonstrating that substrates and cleavage products modulate cellular growth, differentiation, apoptosis, angiogenesis, chemotaxis, and migration (92).

Taken together, cellular movement requires coordinated cell-cell and cell-matrix adhesion, matrix degradation, and cytoskeletal activity. The type of cell migration (collective, mesenchymal, or amoeboid) is influenced by the relative levels of adhesion, cellular and



nuclear deformability (109) and cytoskeletal structure (75). Modulation of any of these factors converts between motility type. During motility and invasion, cells organize adhesive, proteolytic, and motility components into specialized structures known as invadopodia (110–112).

Tissue matrices vary logarithmically in stiffness between tissues and between individuals (113–115). Differences in the relative tensegrity contribute to the strength of adhesion as well as the speed of migration (116,117). Collagen fibers are often organized as a meshwork in most matrices, but the fibers become re-aligned due to tumor cell manipulation (118–120). The migration of subsequent invading cells occurs at a faster rate than the movement of the pioneering cells. This observation leads to a sense that neoplastic cell movement may be pre-programmed. Perhaps cancer cells are attempting to recapitulate one or more embryonic processes, although there is no solid evidence to support this hypothesis.

Eventually, tumor cell migration is toward a transportation compartment (vasculature, lymphatics, coelomic cavities) (Figure 2 – #3). As mentioned above, most distant metastases arise because cells transit through the vascular system since this provides opportunities for the widest dissemination in the shortest amount of time. However, it is essential to remember the interconnectivity between transit compartments, e.g., lymphatic connection to vessels at the thoracic duct.

Migration is not accomplished only by properties of the tumor cell. In recent years, it has become increasingly apparent that inflammatory cell populations present in the primary tumor contribute to motility and invasion (Figure 2 – #1, #4). Differentially polarized innate immune cells can exert either pro-or anti-cancer effects (121–123). The immune cells which are anti-tumor are designated N1 or M1 neutrophils or macrophages, respectively. In contrast, populations of polymorphonuclear cells (PMN) or macrophages that assist tumor cell invasion and migration are designated N2 or M2, respectively. Several recent studies demonstrated that the situation is not as simplistic as a bipolar system, but from a conceptual standpoint, it is apparent that neoplastic cells engender seditious behavior of immune cells by as-yet relatively ill-defined mechanisms. Analogous scenarios with carcinoma-associated fibroblasts have also been described (124).

One of the first demonstrations of immune cell polarization to assist invasion was described by Aeed *et al.* (125), who demonstrated neutrophilia developed in proportion to metastatic behavior of rat mammary adenocarcinoma cell lines. Co-injection of tumor-induced PMN increased metastatic efficiency *in vivo* and enhanced invasive properties *in vitro*. The latter were associated with increased production of MMP and heparanase (125). Interestingly, only tumor-induced neutrophils promoted invasion, not artificially stimulated PMN.

Subsequently, tumor cell production of granulocyte-macrophage colony stimulating factor and interleukin-3 were determined to be responsible for PMN mobilization from the bone marrow and possibly differentiation (126). At the time of those experiments, the molecular markers for the neutrophil subpopulations were not as refined as they are today, but the phenotypes are consistent with what are currently called myeloid-derived suppressor cells (127,128). Analogous situations are probably operational for macrophage or other pro-tumorigenic/pro-metastatic polarization.

## Intravasation

Following local invasion, cellular dispersion requires entry into a transit compartment (Figure 2 – #3), in the case of blood-borne metastasis, the process is termed intravasation. John Condeelis, Jeff Pollard, and colleagues (129–131) have characterized a number of metastasis-promoting aspects of macrophages, particularly at the step of intravasation (i.e., entry into a vascular compartment). Interestingly, alternating tumor cell and macrophages into a “conga line” suggests that the macrophages may be induced to secrete proteinases which the tumor cells do not then need to produce on their own.

Intravasation requires, at least, partial degradation of the ECM and basement membrane underlying endothelial cells. The invasion processes described above continue so that tumor cells squeeze between endothelial cells in order to extend filopodia into the lumen. During this process, *in vitro* studies suggest that the integrity of the endothelial barrier (as measured by electrical resistance) is not significantly disrupted (132,133). In other words, tumor cells, by mechanisms which are still not fully understood, do not fully disrupt the tight junctions and yield overt leakage from capillary intima. This point does not undermine what is known about angiogenesis-induced vasculature and tumors. Specifically, the vasculature in tumors is notoriously tortuous and ill-formed (134,135). Tumor cell production of vascular endothelial growth factor (VEGF) is also associated with increased vascular permeability. Indeed, VEGF was originally called VPF or vascular permeability factor (136). Critically, tumor cells enter the vasculature or lymphatics or body cavities most often by wedging between cells at the junctions between them (137). Hence, the abnormal vasculature resulting from tumor angiogenesis represents an easier entry point for tumor cells.

The above observations highlight other mechanisms of motility as well. Overholtzer proposed another mechanism by which tumors could transit endothelial linings, a process they termed *entosis* (138). In essence, tumor cells can pass through vessels and emerge on the other side. However, most cells fail to survive this non-apoptotic cell invasion process. The frequency of entosis is open to debate since it is not widely observed in pathologic sections. But the frequency of trans-endothelial migration *in vitro* does appear to occasionally involve entosis.

More recently, a mechanism of intravasation reminiscent of passive invasive mechanisms characterized by Dale Coman, Irving Zeidman and colleagues has been described (118,139,140). Dissociated tumor cells at the leading edge are ‘pushed’ into the circulation by the division – and natural expansion – of the cells behind them (141). As blood passes by cells in a vessel lumen, neoplastic cells can enter the blood by passive pushing and pulling forces. The more passive nature of cellular invasion and intravasation highlighted by this recent study were first described using quick setting polymers in the early days of metastatic research. Tumor cells frequently take the line of least resistance during the metastatic process. As alluded above, pioneering cells will restructure matrices or open channels through which subsequent cells may more efficiently (and quickly) traverse.

## Dissemination and Transport

Upon entry into a transport compartment, tumor cells can then disseminate wherever that compartment goes (Figure 2 – #3). Movement within vessels or cavities can be either active or passive. Although the efficiency of entry of cells into the vascular compartment varies widely, the frequency of tumor cell entry into the vasculature is amazingly common – between  $1-4 \times 10^6$  cells per gram of tumor enter the vasculature per day (142,143). The early steps of metastasis are therefore not as infrequent as the successful colonization of secondary sites. The process of successfully metastasizing is highly inefficient (142,144). Thus, it is critical to distinguish between mere dissemination or spreading of cells and development of overt metastases.

A clinical study exemplifies this critical distinction elegantly. Palliative treatment of patients with advanced ovarian carcinoma using peritoneovenous (LeVeen) shunts to reduce ascites burden showed that, despite continuous entry of billions of viable tumor cells into the circulation, metastases to the lung (i.e., the first capillary bed encountered) were rare (145).

During dissemination, characteristics of the circulating tumor cells (CTC) vary widely. For example, a full continuum of markers associated with epithelial or mesenchymal characteristics are found in the vasculature. Of the millions of cells that enter the vasculature daily, the overwhelming majority ( $\ll 0.01\%$ ) fail to successfully colonize secondary sites. The efficiency of metastasis can increase if tumor cells maintain structural emboli (both homotypic or heterotypic) or if they become encased within fibrin clots (146). Larger emboli are more efficiently trapped as vessel diameters decrease (144,147,148). The latter situation, in part, explains how the vast majority of metastases tend to occur at the first capillary bed encountered (149,150). Still, the location of successful colonization of secondary tissues is not entirely determined by non-specific arrest. In addition to the structural impact of emboli, CTC exhibit altered gene expression patterns, in part, due to changes in epigenetic marks (151).

Once tumor cells enter any circulatory compartment, they move via active motility mechanisms or more passively (i.e., pushed along with fluid flow). Injection of radiolabeled cells directly into circulation reveals that a substantial proportion are lost during the transport phase of the metastatic cascade. In the bloodstream, tumor cells are in intimate contact with leukocytes and other immune components. Throughout transit, tumor cells evade immune insults. They do this by down-regulating antigens, secretion of factors that trick the immune system into recognizing tumor as “normal,” or direct killing of immune cells. Others are killed by exposure to hemodynamic shear forces (152). The average tumor cell (20–30  $\mu\text{m}$  diameter) must squeeze through capillaries significantly smaller (6–7  $\mu\text{m}$ ). Even when tumor cells can deform, they encounter significant hydrostatic pressures. Cell origin and biophysical parameters (i.e., membrane fluidity, cellular elasticity and cytoskeletal organization) determine whether cells remain intact or are broken by shear. Experimental measurement of these parameters *in vivo* is complicated by the time it takes to remove lungs, liver, heart and muscle post-injection of tumor cells (2–3 minutes) since most cells are already dead due to mechanical trauma.

Deformability is also impacted by the pressures found within various tissues. For example, blood flow in osseous sinusoids is sluggish compared to capillaries and post-capillary venules (~30-fold lower). By analogy flow in bone is like the ebb and flow of the everglades compared to the river rapids found in capillaries. During transport, tumor cell behavior is determined by their existence as either single cells or as emboli (153–155). Embolization can either be homotypic (tumor cell-tumor cell) or heterotypic (tumor cell-leukocyte, -platelet, -fibrin). Embolus size contributes to where cells adhere but also protects cells from shear forces and immune attack (156).

Intravital videomicroscopy of cells in circulation reveals that most roll rather than float, just like leukocytes (157,158). During this time, tumor cells remain weakly adherent and subject to anoikis (a specialized type of apoptosis in which cells which are anchorage-dependent are induced to die). Note: anchorage independence is a misnomer since the type of substrate to which cells are attached also plays a critical role. Cells growing in soft agar are, in fact, attached to carbohydrate moieties via lectins, for example adherence to galactose by galectins. Some tumor cells will induce apoptosis even if firmly attached to a substrate if that substrate is not the preferred one for that cell type (159).

### **Cellular arrest, vascular adhesion and extravasation**

Following circulation, tumor cells either arrest due to physical constraints such as microvascular diameter or adhere to the intimal layers of a vessel (Figure 2 – #3). Endothelial cells lining blood vessels are the first barrier to exiting vessels, although cells can adhere to exposed basement membrane underlying the endothelium. There are three types of vessel intimal structures found in higher vertebrates – continuous, discontinuous and fenestrated. Most endothelial cells form tight junctions and have a continuous, unbroken basement membrane beneath them. In certain organs, such as liver and spleen, endothelial cells and the basement membrane are dis-continuous. In the kidney, although there are gaps between endothelial cells, a membrane-like structure connects them. The entire structure overlaps in a continuous basement membrane. These endothelial/basement membrane barriers contribute to the normal function of the tissues and form additional barriers through which tumor cells must pass.

Endothelial cells in each tissue express unique (combinations of) markers (160–163). Those markers represent tissue ‘addresses’ which tumor cells can recognize and adhere to in a selective manner (164,165). This selectivity is thought to be among the mechanisms leading to selective organotropism of metastasis (see below). Both *in vivo* and *in vitro* analyses indicate that initial attachment of cancer cells occurs preferentially at endothelial cell junctions, followed by endothelial retraction and adhesion of cancer cells to the underlying basement membrane. Even more efficiently, tumor cells adhere at sites where inflammation is taking place (166–168), perhaps explaining why metastases often arise at sites of tissue injury (169–171). During inflammation, endothelial surface markers change so that leukocytes more readily adhere and eventually traverse the site of tissue injury (158,172). Following transendothelial migration, cancer cells encounter the basement membrane, begin to secrete proteinases, deform as they squeeze between cells and through holes in the matrix and begin the process of colonization. The molecular mechanisms of extravasation are

thought to be similar to those involved during intravasation but have not been exhaustively studied.

Extravasation is exiting a vessel and entry into an organ parenchyma. Previously, extravasation was viewed as a key rate limiting step for metastasis formation, but intravital videomicroscopy studies indicated that extravasation can be remarkably efficient. For example, Ann Chambers and colleagues showed that nearly 90% of B16-F1 murine melanoma cells injected into the mesenteric vein arrested in the liver 90 minutes after injection. Of the injected cells, 83% were in the liver parenchyma three days later (i.e., >95% of the arrested cells extravasated) (173).

The time between detachment of cells from the primary tumor mass to re-adhesion or arrest of cells at secondary sites is minutes, far shorter than the time required for transcription, translation and re-expression of adhesion molecules. Exactly how cells lose cohesion yet regain it during such a short interval is perplexing. Whether it involves a different cache of adhesion molecules, the involvement of other cells or different associations between adhesion molecule regulators will await experimental testing.

It is important to note that there is debate whether extravasation is required for metastasis. In the case of some pulmonary metastases, there is evidence that tumor cells can attach to the lung endothelium, survive and grow intravascularly (174). Extravasation occurs in this model only after intravascular foci expand to destroy vessel integrity.

## Colonization

Colonization of secondary tissues requires the same elements as growth of the primary tumor (Figure 2 – #4). There must be sufficient oxygenation and nutrients to divide. Initial growth of the metastases can occur in the absence of angiogenesis, but growth beyond a certain size (~1 mm) requires co-option of existing vessels, development of new vessels or the formation of vascular channels by tumor cells themselves (27,175,176).

The establishment of a supportive metastatic environment occurs prior to the arrival of any carcinoma cell, the so-called pre-metastatic niche (Figure 2 – #4). Elements of the supportive environment include VEGFR+ bone marrow progenitors (177), MDSC (58), and neutrophils (178,179). Like what has been observed in primary tumors, polarization of some immune cells at the pre-metastatic niche creates an environment that will be more amenable to tumor growth. Relatively recently, a process in which neutrophils extrude DNA that can be used to kill bacteria has been observed at sites where tumor cells more efficiently colonize. The extruded DNA is termed a neutrophil extracellular trap in a process known as NETosis (180,181). The underlying mechanisms for this immune change are not fully defined but are consistent with a profound manipulation of host responses to tumor cells necessary for successful completion of the metastatic process.

The patterns of metastases are non-random (49,182,183). Using autopsy data, Leonard Weiss determined that most metastases formed where disseminated cells encountered the first capillary bed or lymph node (149). Yet, despite receiving only approximately 15% of cardiac output, bone is the most common site of metastases across all tumor types.

Specifically, bone is the most common site for breast and prostate cancer metastasis. Stephen Paget, in a seminal study in 1889 evaluated the patterns of metastases for breast cancer and determined that the bone is disproportionately involved (183). Through this, he posited what is now widely recognized as the “seed and soil” hypothesis. Abundant evidence has been collected to support the key tenets of this hypothesis (reviewed in (49,182)) (**Table 1, Figure 2 – #5**). First, tumor cells are endowed with certain characteristics that enable them to survive the multiple steps of the metastatic cascade. Second, tumor cells selectively respond to select signals from host tissues so that the distribution of metastases is not due to chance, but due to the combination of properties between the cell <seed> and the organ <soil> in which it will develop. Recent data have added a third element to the seed and soil hypothesis, that we analogize to the climate (184–187). The latter represents the overall health of the individual and certain inherent background genetic components that lead to alterations of immune function, metabolism, etc.

Since Otto Warburg posited that cell metabolism was key to the transformation of cells (188), exploration of the roles of metabolism in metastasis has been studied extensively (reviewed in (189–192)). Both pro- and anti-metastatic impact of mitochondrial content (193,194) and function (195) as well as location (196–199) have been reported. Additionally, metabolism-related functions, such as autophagy and mitophagy, have been associated with invasive and metastatic activities of cancer cells (200,201).

Importantly, the mechanical or anatomic theory and the seed and soil hypothesis are not mutually exclusive. Even if tumor cells are directly injected into certain organs, only those able to respond to the local environment by proliferating will form metastases. Experimental data supporting the “seed and soil” hypothesis include organ-selective adhesion (49,202), invasion (203), and growth (204–208).

What mechanisms are responsible for differential growth of tumor cells in various tissues? This question has been extensively studied; yet, the answer still remains largely unknown. It is clear that coordinated expression of many genes is required (46,209–212). It would seem that there is a hierarchy of gene expression responsible for metastatic propensity. We propose that there are genes that endow neoplastic cells with the ability to metastasize upon which there are additional genes that determine where metastases will develop. Multiple investigations have attempted to isolate the factor(s) in various tissues that promote the growth of organ-specific metastasis. While crude lysates or conditioned media do show patterns of organ-selective growth promotion or inhibition, to the best of our knowledge no one has yet fully succeeded in identifying and purifying the combination of factors responsible for organ-specific colonization. Nonetheless, some metastasis regulatory factors have been identified. Although natural to focus upon growth promoting factors, there is also evidence that some tissues are hostile to tumor cells (204,213). As is the case for growth-promoting factors, the identity of the growth inhibitory factors is also largely ill-defined (210,214,215). Evidence that Wnt pathways might interact with TGF-beta signaling to regulate bone metastasis development have been identified (215). Likewise, the immune and inflammatory systems vary by tissue and could contribute to differential growth (216–218). For example, Boire and colleagues recently identified complement component 3 as a factor contributing to the development of leptomeningeal metastases (210). Conversely, Ku et al.



determined that factors secreted from myeloid derived suppressor cell populations can impact L-selectin-dependent adaptive immunity in lymph nodes (219) which could, in turn, influence the efficiency of metastasis to draining lymph nodes. Additionally, physical forces such as the strong hemodynamic vortices in the heart are not amenable to arrest, survival and growth for most cells.

Organ selectivity of metastasis has led many to speculate that there are “homing” mechanisms such as chemotaxis or haptotaxis. Evidence supporting the notion of chemotactic gradients was first provided by Zlotnik laboratory (220). Using microarrays, they found that tumor cells expressing CXCR4, a chemokine receptor, preferentially metastasized to tissues expressing the ligand, SDF1/CXCL12. While the data strongly support the notion that there are soluble factors produced in different tissues to which tumor cells can respond, homing has never been observed. Strictly speaking, homing would require directed movement throughout the transit of tumor cells as they leave the primary tumor. Rather, tumor cells distributed according to circulatory patterns initially but may “home” once they are more proximate to a site of eventual colonization. Many of the homing mechanisms utilized by lymphocytes for peripheral lymph nodes or sites of inflammation are apparently shared by tumor cells as well.

Colonization of secondary (or higher-order) sites does not require immediate cell division. Dormancy refers to an interlude during a progressive process. In the case of metastasis, disseminated cells recur as macroscopic lesions months to years post-seeding (205,221,222). During the interim, they are below the limit of detection and, except for a handful of experiments, their status during that time is largely a black box with regard to understanding. Several mechanisms leading to observed dormancy have been proposed and recently reviewed (205,223). Briefly, Hadfield first proposed that cells may have undergone a temporary mitotic arrest or a prolonged time in the G<sub>0</sub>/G<sub>1</sub> phases of cell cycle (224). This theory is supported by observations that labeling CTC or disseminated tumor cells (DTC) with the proliferation marker, Ki67, suggests that a high proportion are non-dividing (225). Judah Folkman proposed that observations of dormancy were due to lack of sufficient blood supply, keeping tumor masses below the limits of detection (i.e., angiogenic dormancy) (226). Similarly, DTC may be held in check by immune mechanisms, sometimes referred to as immune editing (227). Also, stromal changes in metabolism (223,228) or other aging-associated phenotypes (229) could be responsible for escape from dormancy. At this juncture, however, whether other populations of cells have remained quiescent or have undergone balanced cell division/apoptosis during the interim is not yet known. Among the most critical insights necessary for improving therapeutic outcomes related to metastasis will be understanding the mechanisms responsible for escape from dormancy in order to colonize secondary sites.

Metastases can subsequently metastasize (230). Once a tumor cell colonizes a secondary site, genetic instability inherent in neoplastic cells continues to operate at each cell division. It is observed that cells from metastases can recapitulate the multiple steps above and move to other sites in the body. A clinical manifestation occurs with the observance of DTC in the bone marrow of tumors. Klaus Pantel and colleagues have elegantly shown in a variety of tumor types that DTC are often associated with worse clinical outcome (231,232). Even for

cancers that rarely metastasize to the bone (i.e., colon) the presence of DTC in bone marrow biopsies is often a predictor of development of liver metastases.

## Questions that influenced our defining the hallmarks of metastasis

### When do cancer cells metastasize?

With the advent of next generation sequencing, exploration of the processes of metastasis and the genetic relationship of primary tumor to metastases has been explored in greater detail. The long-held notion that metastatic cells are the ultimate stage of tumor progression (i.e., a late event in tumor progression) has been challenged (206,233,234). While clinical observations clearly suggest that earlier diagnosis results in better prognosis, re-emergence of dormant cells decades following initial diagnosis of early stage tumors questions that assumption (235–237). Obviously, cells have disseminated prior to diagnosis.

There is debate regarding whether metastases arise following parallel or sequential evolution (35,238). Both mechanisms have been observed and are entirely consistent with the metastatic cascade outlined above. As populations of tumor cells arise at the primary tumor, some disseminate early, others disseminate later, and still others acquire mutations after they have already seeded the secondary sites. Single cell analyses confirm that >90% of metastases are clonally derived and possess the same driver mutations that led to tumorigenesis.

### What induces cells to disseminate?

Neoplastic cells are dependent, but not entirely so, on the stromal microenvironment. They do not require exogenous growth inducers to the same extent as their normal counterparts nor are they as sensitive to growth inhibitory signals. If the primary tumor has limited nutrients or oxygen, cells may be “motivated” to move elsewhere. Several studies demonstrate that transient hypoxic conditions alter gene expression rendering cells more metastatic (239,240). The primary mechanism thought to engender the metastatic capability is through a gene expression cassette controlled by hypoxia inducible factor (HIF 1) (241,242), which includes several pro-metastatic genes such as Ras, EGFR, Her2/neu, VEGF, IL8, MMP, uPA, PIK3CA, etc.

### When is a metastasis not a metastasis?

Since metastasis requires accomplishing several different steps, the questions arise: what is the clinical relevance of disseminated cells? And are single disseminated cells metastases? These questions have been debated for more than a century and are even more relevant today.

The presence of undetectable single ectopic cells was not an issue until techniques capable of detecting them (or small emboli) were developed. Happenstance sections in autopsy tissues often detect disseminated neoplastic cells, but their clinical importance was negligible since they were not affecting organ or tissue function. This observation does not belittle the potential clinical importance of disseminated cells, since they have accomplished antecedent steps of metastasis. They may retain potential to become a *bona fide* metastasis,

even after years in ectopic sites (231,243). This fact emphasizes the critical aspects of disseminated cell dormancy before colonization.

The clinical challenge is to discriminate between cells merely leaning towards metastatic behavior from those destined to become actual secondary masses. Mere presence of tumor cells in the peripheral circulation, lymph nodes or bone marrow are indicators of poor prognosis (244,245); however, correlations are imperfect (246). Recent staging criteria incorporate parameters of single cells or microscopic metastases. Are they metastases? We would argue not since it is not known whether those cells are fully capable of colonizing a secondary site.

The distinction between disseminated (or disseminating) cells from macroscopic metastases has important clinical implications. Presently it is not known whether persistent cells are dormant (i.e., nondividing) or of limited replicative ability. Dormancy would explain resistance to treatments that, for the most part, target proliferating cells. By contrast, limited replicative ability would provide a potential mechanism for emerging new mutations being passed on to progeny. Failure to distinguish *bona fide* metastases from inert disseminated cells has important implications. Current medical practice is to eliminate or diminish all risk to the patient. If cells have already spread, then aggressive treatments are advocated. The extent and location of spread determines a treatment plan. However, patients might be subjected to more cytotoxic agents than necessary since most disseminated cells fail to form secondary tumors. Findings that cancer cells may emigrate when tumors are microscopic may warrant aggressive treatments regardless.

The studies above also highlight limitations regarding recent studies analyzing single cells. While it is certainly possible to demonstrate heterogeneity between cells, it is impossible to determine which cells, if any, would eventually develop metastasis. Similarly, which of the biomarkers identified (or combinations of biomarkers) is functionally relevant will require further validation.

## Defining the Hallmarks of Metastasis

When we embarked upon writing this review, we recognized that there have been many articles written on topics related to metastasis, but none in recent history that deals with the specific properties of a metastatic cell. We also recognized that a plethora of “hallmarks” papers have been published in recent years (more than 700 titles in PubMed). Many have helped refine the discussion, but others missed the key point regarding a hallmark, defined by Merriam-Webster as a distinctive or distinguishing feature or trait.

Ascribing specific hallmarks to either the metastatic process or the development of metastatic lesions has been challenging because tumor cells utilize cellular processes, signaling cascades and molecules that are shared by normal cells. Except for mutated driver mutations, cancer cells use the same cellular machinery as their normal counterparts. This fact represents one of the major reasons that cancer has been so difficult to prevent or treat effectively without significant toxicities. Cancer cells largely do normal things at inappropriate times and at incorrect places.

In describing what takes place during the metastatic cascade, it is wholly clear that there is redundancy allowing cells to overcome one deficiency yet complete individual steps using alternative pathways. Furthermore, at many steps in the metastatic cascade neoplastic cells piggyback on the actions of surrounding stroma. Thus, the heterogeneity present within any tumor makes ascribing a hallmark extraordinarily challenging (247). The situation is even more complex when dealing with the process of metastasis since any hallmarks of metastasis are superimposed upon the hallmarks of cancer itself.

Notwithstanding these obvious limitations, we propose that there are four capabilities or essential hallmarks for the metastatic cascade and formation a secondary tumor focus: motility & invasion; ability to modulate the secondary site or local microenvironment(s); plasticity; and, ability to colonize secondary tissues. These hallmarks are discussed extensively above but are summarized below in the context of refining key definitions and implications.

### **Motility & Invasion**

To emancipate themselves from a primary tumor, cells must possess the ability to move. There are many ways in which cancer cells can escape, but the capacity to migrate is the *sine qua non* of metastasis. While cellular movement can be aided by other cells, metastatic cells must inherently possess the ability to move, either as an individual cell or as a community of cells.

By definition, malignancy requires cells to penetrate a basement membrane. Therefore, metastatic cells must somehow possess the capacity to invade. However, this capacity need not be intrinsic but can be the result of usurping the invasive capabilities of infiltrating immune cells or altering the behavior of adjacent stromal populations. Also critical is recognition that motility is necessary, but not sufficient, for invasion.

### **Modulation of the microenvironment**

A striking characteristic of all metastases is their ability to restructure the local tissue by: recruiting new cells into the local microenvironment, eliciting mobilization of immune/inflammatory cells, telegraphing a restructuring of other tissues, altering metabolism of surrounding stroma, negating anti-tumor actions of the immune system, manipulating the behavior of other cancer cells, altering the extracellular matrix, or co-opting normal behaviors of other cells to accomplish one or more steps of the metastatic cascade.

### **Plasticity**

All cancers are heterogeneous (248–250). Furthermore, measurement of tumor composition at any time is merely a snapshot because selective pressures alter the composition and cellular behavior. Tumor cells communicate with each other as well as with normal stroma. Neoplastic cells can alter growth rate of other cells (43,251), drug resistance (252–255) and metastatic capability (85,256). Communication can be directly to another tumor cell or via an intermediary cell. Regardless, communication between tumor cells and between tumor cells and host cells results in changed behavior and plasticity. Therefore, heterogeneity is heterogeneous both spatially and temporally (33).

From an evolutionary perspective, cellular plasticity provides a selective advantage (257). This is especially true when one considers the variety of microenvironments through which disseminating cells must transit during the metastatic cascade (257). Likewise, the capacity to grow in more than one soil requires the capacity to adapt.

Throughout the metastatic cascade, cells must respond to continuously changing matrices, environmental conditions (e.g., pO<sub>2</sub>, nutrients, shear, etc.), and insults. The redundancy of mechanisms capable of accomplishing any step in the metastatic process provides a clear competitive advantage to cells which have the greatest number of tools in their toolbox. Rather than using a single integrin heterodimer for adhesion, cells that can use alternative adhesion molecules or recognize another matrix component, have a selective advantage. Likewise, the ability to adapt by using a different protease to invade represents another way in which disseminating cells can achieve metastasis.

It is important to consider that the formation of a metastatic locus is not necessarily a binary process. Obviously, if a cell cannot complete one step of the metastatic cascade, it cannot successfully accomplish subsequent ones. However, if a cell possesses even a modicum of capability for each step, efficiency is low but capacity to metastasize still exists. This point is highlighted by the continuum of states between epithelial and mesenchymal. Neoplastic cells appear to reside anywhere between the extremes in these phenotypes. One does not yet know whether the rate of transition between states is critical. However, the ability to adapt to ever-changing conditions is necessary transiting from one part of the body to another. Indeed, recent evidence suggests that loss of the ability to adapt (i.e., terminal differentiation into adipocytes) can block the ability to metastasize (258).

### Colonization

Among the most critical distinctions when defining the hallmarks of metastasis is between the words *dissemination* and *metastasis*. Confusion often arises because metastasis refers to both a process as well as an outcome. From a clinical perspective, it is the outcome which is most critical. For if a cell begins the process, but cannot complete it (i.e., establish a macroscopic lesion), then it is irrelevant since the patient will not succumb to cancer as long as the primary tumor is removed. However, if a disseminated cell successfully colonizes a tissue, then survivability plummets. As a result, we strongly recommend distinguishing the mere dissemination of cells from the word metastasis. Equating CTC or DTC to metastases is incorrect. Most CTC and DTC never proliferate to form a macroscopic lesion. Each has the *potential* to do so, but it is not yet realized. As with these other hallmarks of metastasis, the ability to colonize at a discontinuous site incorporates the ability to manipulate the microenvironment as well as adapt to growth elsewhere.

### Implications and opportunities

Far and away, the most lethal attribute of cancer cells is their ability to metastasize. The development of metastasis is currently considered incurable. Patients, their families and their physicians ride a roller coaster of responses and non-responses, remissions and recurrences, as well as hope and despair. Since the introduction of (neo)adjuvant therapies into oncologists' armamentaria, long-term survival rates have increased significantly for many

cancers. Such statistics are encouraging beginnings but are certainly not adequate. The “Sword of Damocles” still hangs over patients’ heads. When tumors recur, the clinical response is like a game of whack-a-mole that appears to prolong the inevitable, non-responsive recurrence.

Several misconceptions associated with metastasis can be dispelled by disciplined use of these hallmarks. While earlier detection of tumors has contributed to increased 5-year survival rates, the inference is that tumor size determines whether metastases will develop. Unfortunately, recent data demonstrate that cells can disseminate when primary tumors are still undetectable (206,234).

When discussing neoplasms, many combine the terms invasion and metastasis as if they are identical. As illustrated above, invasion is necessary, but not sufficient, for metastasis development. While detection of invasion in a biopsy provides important information regarding likelihood of developing metastasis (259), the two terms cannot be equated.

Another misconception is that all metastases are equal. Certainly, location of metastatic lesions determines risk to patient survivability (i.e., brain metastases are certainly more immediately concerning than subcutaneous metastases). However, sequencing and single cell analysis data clearly show that some metastases arise from distinct lineages from others (35,88,260–263) and metastases can seed other metastases (35,230).

A common misconception regarding metastasis is that they are universally therapy resistant. This notion has gained popularity with the acceptance of the so-called cancer stem cell hypothesis. Cancer stem cells are thought to be those from which metastases arise. In separate studies, stem cells are generally therapy resistant due to efflux pumps and reduced rates of cell division (264). However, comparison of metastatic and non-metastatic cell responses to radiation, chemotherapy and immunotherapies reveals that individual cell clones are both sensitive and resistant (7,265).

Finally, many refer to metastasis as incurable (238). We choose to say they are *currently* incurable, thereby retaining hope that metastasis may one day be controlled or cured. There are some essential differences between normal cells and metastatic cells. Importantly, all properties necessary for metastasis must co-exist within a single cell or co-opted from ancillary cells (including the properties necessary to recruit another cell to complement a specific defect). Conceptually, this offers opportunities for cancer patients in the future.

Defining the hallmarks of metastasis has been complicated by both the heterogeneity amongst tumor cells as well as their myriad interactions with other molecules and cells throughout the process. Our attempts to identify the underlying first principles of the metastatic process hopefully provide a means for simplifying the processes that are essential for all metastases to develop. As insights into the molecular circuitry involved are uncovered, the phenotypes identified as hallmarks will be more amenable to therapeutic intervention and/or prevention. To achieve this end, focused research into the fundamental processes of each hallmark will be needed. Direct comparisons between primary tumors, CTC, DTC and metastases in the same patient will be necessary. And disavowing the notion that primary tumors are equivalent to metastases will be required.



## Acknowledgments:

DRW has been supported by grants from the National Cancer Institute, Department of Defense, Susan G. Komen for the Cure, National Foundation for Cancer Research, METAvivor Research and Support Inc., Theresa's Research Foundation and the Hall Family Professorship in Molecular Medicine. DRH has been supported by grants from American Cancer Society, METAvivor Research and Support Inc., and the Elsa U. Pardee Foundation. We are grateful to many colleagues and collaborators for fruitful discussions and apologize to authors whose work was not cited due to space limitations.

## References

1. Eccles SA, Welch DR. Metastasis: recent discoveries and novel treatment strategies. *Lancet* 2007;369:1742–57 [PubMed: 17512859]
2. Klein CA. Framework models of tumor dormancy from patient-derived observations. *Curr Opin Genet Dev* 2011;21:42–9 [PubMed: 21145726]
3. Steeg PS, Theodorescu D. Metastasis: A therapeutic target for cancer. *Nat Clin Pract Oncol* 2007;5:206–19
4. Hanahan D, Weinberg RA. The hallmarks of cancer. *Cell* 2000;100:57–70 [PubMed: 10647931]
5. Hanahan D, Weinberg RA. Hallmarks of cancer: the next generation. *Cell* 2011;144:646–74 [PubMed: 21376230]
6. Lazebnik Y What are the hallmarks of cancer? *Nat Rev Cancer* 2010;10:232–3 [PubMed: 20355252]
7. Welch DR, Tomasovic SP. Implications of tumor progression on clinical oncology. *Clin Exp Metastasis* 1985;3:151–88 [PubMed: 3902300]
8. Heppner GH, Miller FR. The cellular basis of tumor progression. *Int Rev Cytol* 1998;177:1–56 [PubMed: 9378615]
9. Foulds L Tumor progression. *Cancer Res* 1957;17:355–6 [PubMed: 13437294]
10. Vogelstein B, Fearon ER, Hamilton SR, Kern SE, Preisinger AC, Leppert M, et al. Genetic alterations during colorectal-tumor development. *N Engl J Med* 1988;319:525–32 [PubMed: 2841597]
11. Kunz-Schughart LA, Knuechel R. Tumor-associated fibroblasts (part I): Active stromal participants in tumor development and progression? *Histol Histopathol* 2002;17:599–621 [PubMed: 11962761]
12. Dvorak HF, Senger DR, Dvorak AM. Fibrin as a Component of the Tumor Stroma - Origins and Biological Significance. *Cancer Metastasis Rev* 1983;2:41–73 [PubMed: 6193869]
13. Welch DR. Defining a cancer metastasis In: Research AAfC, editor. *AAfC Education Book 2006*. Philadelphia: AACR; 2006 p 111–5.
14. Steeg PS. Targeting metastasis. *Nature Reviews Cancer* 2016;16:201–18 [PubMed: 27009393]
15. Fidler IJ. The Biology of Cancer Metastasis or, You Cannot Fix It If You Do Not Know How It Works. *Bioessays* 1991;13:551–4 [PubMed: 1755831]
16. Fidler IJ. Timeline - The pathogenesis of cancer metastasis: the 'seed and soil' hypothesis revisited. *Nature Reviews Cancer* 2003;3:453–8
17. Sleeman JP, Nazarenko I, Thiele W. Do all roads lead to Rome? Routes to metastasis development. *Int J Cancer* 2011;128:2511–26 [PubMed: 21365648]
18. Roh J, Muelleman T, Tawfik O, Thomas SM. Perineural growth in head and neck squamous cell carcinoma: a review. *Oral Oncol* 2015;51:16–23 [PubMed: 25456006]
19. Marchesi F, Piemonti L, Mantovani A, Allavena P. Molecular mechanisms of perineural invasion, a forgotten pathway of dissemination and metastasis. *Cytokine Growth Factor Rev* 2010;21:77–82 [PubMed: 20060768]
20. Lugassy C, Kleinman HK, Engbring JA, Welch DR, Harms JF, Rufner R, et al. Pericyte-like location of GFP-tagged melanoma cells: ex vivo and in vivo studies of extravascular migratory metastasis. *Am J Pathol* 2004;164:1191–8 [PubMed: 15039208]
21. Blanpain C Tracing the cellular origin of cancer. *Nat Cell Biol* 2013;15:126–34 [PubMed: 23334500]

22. Yamamoto N, Yang M, Jiang P, Xu M, Tsuchiya H, Tomita K, et al. Determination of clonality of metastasis by cell-specific color-coded fluorescent-protein imaging. *Cancer Res* 2003;63:7785–90 [PubMed: 14633704]
23. Talmadge JE, Wolman SR, Fidler IJ. Evidence for the clonal origin of spontaneous metastases. *Science* 1982;217:361–3 [PubMed: 6953592]
24. Navin N, Kendall J, Troge J, Andrews P, Rodgers L, McIndoo J, et al. Tumour evolution inferred by single-cell sequencing. *Nature* 2011;472:90–4 [PubMed: 21399628]
25. McGranahan N, Swanton C. Cancer Evolution Constrained by the Immune Microenvironment. *Cell* 2017;170:825–7 [PubMed: 28841415]
26. McGranahan N, Swanton C. Clonal Heterogeneity and Tumor Evolution: Past, Present, and the Future. *Cell* 2017;168:613–28 [PubMed: 28187284]
27. Angiogenesis Folkman J.. *Annu Rev Med* 2006;57:1–18 [PubMed: 16409133]
28. Paulis YW, Soetekouw PM, Verheul HM, Tjan-Heijnen VC, Griffioen AW. Signalling pathways in vasculogenic mimicry. *Biochim Biophys Acta* 2010;1806:18–28 [PubMed: 20079807]
29. Sleeman JP, Thiele W. Tumor metastasis and the lymphatic vasculature. *Int J Cancer* 2009;125:2747–56 [PubMed: 19569051]
30. Folberg R, Maniotis AJ. Vasculogenic mimicry. *APMIS* 2004;112:508–25 [PubMed: 15563313]
31. Bentolila LA, Prakash R, Mihic-Probst D, Wadehra M, Kleinman HK, Carmichael TS, et al. Imaging of Angiotropism/Vascular Co-Option in a Murine Model of Brain Melanoma: Implications for Melanoma Progression along Extravascular Pathways. *Sci Rep* 2016;6:23834 [PubMed: 27048955]
32. Maniotis AJ, Folberg R, Hess A, SefTOR EA, Gardner LM, Pe'er J, et al. Vascular channel formation by human melanoma cells in vivo and in vitro: vasculogenic mimicry. *Am J Pathol* 1999;155:739–52 [PubMed: 10487832]
33. Welch DR. Tumor Heterogeneity--A 'Contemporary Concept' Founded on Historical Insights and Predictions. *Cancer Res* 2016;76:4–6 [PubMed: 26729788]
34. Heppner GH. Cancer cell societies and tumor progression. *Stem Cells* 1993;11:199–203 [PubMed: 8318906]
35. Hunter KW, Amin R, Deasy S, Ha NH, Wakefield L. Genetic insights into the morass of metastatic heterogeneity. *Nat Rev Cancer* 2018;18:211–23 [PubMed: 29422598]
36. El-Kebir M, Satas G, Raphael BJ. Inferring parsimonious migration histories for metastatic cancers. *Nat Genet* 2018;50:718–26 [PubMed: 29700472]
37. Baslan T, Hicks J. Unravelling biology and shifting paradigms in cancer with single-cell sequencing. *Nat Rev Cancer* 2017;17:557–69 [PubMed: 28835719]
38. Abbosh C, Birkbak NJ, Wilson GA, Jamal-Hanjani M, Constantin T, Salari R, et al. Phylogenetic ctDNA analysis depicts early-stage lung cancer evolution. *Nature* 2017;545:446–51 [PubMed: 28445469]
39. Gundem G, Van Loo P, Kremeyer B, Alexandrov LB, Tubio JMC, Papaemmanuil E, et al. The evolutionary history of lethal metastatic prostate cancer. *Nature* 2015;520:353–7 [PubMed: 25830880]
40. Fidler IJ, Talmadge JE. Evidence that intravenously derived murine pulmonary melanoma metastases can originate from the expansion of a single tumor cell. *Cancer Res* 1986;46:5167–71 [PubMed: 3756870]
41. Wolman SR, Mc Morrow LE, Fidler IJ, Talmadge JE. Development and progression of karyotypic variability in melanoma K1735 following X-irradiation. *Cancer Res* 1985;45:1839–44 [PubMed: 3978643]
42. Poste G, Doll J, Fidler IJ. Interactions among clonal subpopulations affect stability of the metastatic phenotype in polyclonal populations of B16 melanoma cells. *Proc Natl Acad Sci* 1981;78:6226–30 [PubMed: 6947225]
43. Poste G, Tzeng J, Doll J, Greig R, Rieman D, Zeidman I. Evolution of tumor cell heterogeneity during progressive growth of individual lung metastases. *Proc Natl Acad Sci U S A* 1982;79:6574–8 [PubMed: 6959137]

44. Fidler IJ, Kripke ML. Metastasis results from pre-existing variant cells within a malignant tumor. *Science* 1977;197:893–5 [PubMed: 887927]
45. Liu R, Wang X, Chen GY, Dalerba P, Gurney A, Hoey T, et al. The prognostic role of a gene signature from tumorigenic breast-cancer cells. *N Engl J Med* 2007;356:217–26 [PubMed: 17229949]
46. Kang Y, Siegel PM, Shu W, Drobnjak M, Kakonen SM, Cordon-Cardo C, et al. A multigenic program mediating breast cancer metastasis to bone. *Cancer Cell* 2003;3:537–49 [PubMed: 12842083]
47. Nowell PC. The clonal evolution of tumor cell populations. *Science* 1976;194:23–8 [PubMed: 959840]
48. Fidler IJ. Selection of successive tumor lines for metastasis. *Nature New Biology* 1973;242:148–9 [PubMed: 4512654]
49. Nicolson GL. Organ Specificity of Tumor-Metastasis - Role of Preferential Adhesion, Invasion and Growth of Malignant-Cells at Specific Secondary Sites. *Cancer Metastasis Rev* 1988;7:143–88 [PubMed: 3293836]
50. Bohl CR, Harihar S, Denning WL, Sharma R, Welch DR. Metastasis suppressors in breast cancers: mechanistic insights and clinical potential. *J Mol Med (Berl)* 2014;92:13–30 [PubMed: 24311119]
51. Welch DR. Preface. Metastasis genes. *Cancer Metastasis Rev* 2012;31:417–8 [PubMed: 22695772]
52. Welch DR. Metastasis suppressors: Discovery, mechanisms and translation In: Research AAFc, editor. AACR Education Book 2009. Philadelphia: AACR; 2009 p 191–6.
53. Thiery JP. Epithelial-mesenchymal transitions in tumour progression. *Nat Rev Cancer* 2002;2:442–54 [PubMed: 12189386]
54. Illmensee K, Mintz B. Totipotency and Normal Differentiation of Single Teratocarcinoma Cells Cloned by Injection into Blastocysts. *Proc Natl Acad Sci USA* 1976;73:549–53 [PubMed: 1061157]
55. Kulesa PM, Kasemeier-Kulesa JC, Teddy JM, Margaryan NV, Seftor EA, Seftor RE, et al. Reprogramming metastatic melanoma cells to assume a neural crest cell-like phenotype in an embryonic microenvironment. *Proc Natl Acad Sci U S A* 2006;103:3752–7 [PubMed: 16505384]
56. Kasemeier-Kulesa JC, Romine MH, Morrison JA, Bailey CM, Welch DR, Kulesa PM. NGF reprograms metastatic melanoma to a bipotent glial-melanocyte neural crest-like precursor. *Biol Open* 2018;7
57. van der Horst G, Bos L, van der Pluijm G. Epithelial plasticity, cancer stem cells, and the tumor-supportive stroma in bladder carcinoma. *Mol Cancer Res* 2012;10:995–1009 [PubMed: 22714124]
58. Psaila B, Lyden D. The metastatic niche: adapting the foreign soil. *Nat Rev Cancer* 2009;9:285–93 [PubMed: 19308068]
59. Kaplan RN, Rafii S, Lyden D. Preparing the “soil”: the premetastatic niche. *Cancer Res* 2006;66:11089–93 [PubMed: 17145848]
60. Peinado H, Zhang H, Matei IR, Costa-Silva B, Hoshino A, Rodrigues G, et al. Pre-metastatic niches: organ-specific homes for metastases. *Nat Rev Cancer* 2017;17:302–17 [PubMed: 28303905]
61. Zhang H, Freitas D, Kim HS, Fabijanic K, Li Z, Chen H, et al. Identification of distinct nanoparticles and subsets of extracellular vesicles by asymmetric flow field-flow fractionation. *Nat Cell Biol* 2018;20:332–43 [PubMed: 29459780]
62. Costa-Silva B, Aiello NM, Ocean AJ, Singh S, Zhang H, Thakur BK, et al. Pancreatic cancer exosomes initiate pre-metastatic niche formation in the liver. *Nat Cell Biol* 2015;17:816–26 [PubMed: 25985394]
63. Sansone P, Savini C, Kurelac I, Chang Q, Amato LB, Strillacci A, et al. Packaging and transfer of mitochondrial DNA via exosomes regulate escape from dormancy in hormonal therapy-resistant breast cancer. *Proc Natl Acad Sci U S A* 2017;114:E9066–E75 [PubMed: 29073103]
64. Matei I, Kim HS, Lyden D. Unshielding Exosomal RNA Unleashes Tumor Growth And Metastasis. *Cell* 2017;170:223–5 [PubMed: 28708994]
65. Hoshino A, Costa-Silva B, Shen TL, Rodrigues G, Hashimoto A, Tesic Mark M, et al. Tumour exosome integrins determine organotropic metastasis. *Nature* 2015;527:329–35 [PubMed: 26524530]

66. Cox TR, Rumney RMH, Schoof EM, Perryman L, Hoye AM, Agrawal A, et al. The hypoxic cancer secretome induces pre-metastatic bone lesions through lysyl oxidase. *Nature* 2015;522:106–U279 [PubMed: 26017313]
67. Hou HW, Li QS, Lee GY, Kumar AP, Ong CN, Lim CT. Deformability study of breast cancer cells using microfluidics. *Biomed Microdevices* 2009;11:557–64 [PubMed: 19082733]
68. Ochalek T, Nordt FJ, Tullberg K, Burger MM. Correlation between Cell Deformability and Metastatic Potential in B16-F1 Melanoma Cell Variants. *Cancer Res* 1988;48:5124–8 [PubMed: 3409238]
69. Skau CT, Fischer RS, Gurel P, Thiam HR, Tubbs A, Baird MA, et al. FMN2 Makes Perinuclear Actin to Protect Nuclei during Confined Migration and Promote Metastasis. *Cell* 2016;167:1571–85 e18 [PubMed: 27839864]
70. Hou ST, Jiang SX, Smith RA. Permissive and repulsive cues and signalling pathways of axonal outgrowth and regeneration. *Int Rev Cell Mol Biol* 2008;267:125–81 [PubMed: 18544498]
71. Kruger RP, Aurandt J, Guan KL. Semaphorins command cells to move. *Nat Rev Mol Cell Biol* 2005;6:789–800 [PubMed: 16314868]
72. Seiki M, Sato H, Liotta LA, Schiffmann E. Comparison of autocrine mechanisms promoting motility in two metastatic cell lines: human melanoma and ras-transfected NIH3T3 cells. *Int J Cancer* 1991;49:717–20 [PubMed: 1657797]
73. Stuelten CH, Parent CA, Montell DJ. Cell motility in cancer invasion and metastasis: insights from simple model organisms. *Nat Rev Cancer* 2018;18:296–312 [PubMed: 29546880]
74. McCarthy JB, Furcht LT. Laminin and fibronectin promote the haptotactic migration of B16 mouse melanoma cells in vitro. *J Cell Biol* 1984;98:1474–80 [PubMed: 6715409]
75. Te Boekhorst V, Preziosi L, Friedl P. Plasticity of Cell Migration In Vivo and In Silico. *Annu Rev Cell Dev Biol* 2016;32:491–526 [PubMed: 27576118]
76. van Helvert S, Storm C, Friedl P. Mechanoreciprocity in cell migration. *Nat Cell Biol* 2018;20:8–20 [PubMed: 29269951]
77. Chaffer CL, San Juan BP, Lim E, Weinberg RA. EMT, cell plasticity and metastasis. *Cancer Metastasis Rev* 2016;35:645–54 [PubMed: 27878502]
78. Lambert AW, Pattabiraman DR, Weinberg RA. Emerging Biological Principles of Metastasis. *Cell* 2017;168:670–91 [PubMed: 28187288]
79. Mani SA, Guo W, Liao MJ, Eaton EN, Ayyanan A, Zhou AY, et al. The epithelial-mesenchymal transition generates cells with properties of stem cells. *Cell* 2008;133:704–15 [PubMed: 18485877]
80. Chaffer CL, Brennan JP, Slavin JL, Blick T, Thompson EW, Williams ED. Mesenchymal-to-epithelial transition facilitates bladder cancer metastasis: role of fibroblast growth factor receptor-2. *Cancer Res* 2006;66:11271–8 [PubMed: 17145872]
81. Tsai JH, Donaher JL, Murphy DA, Chau S, Yang J. Spatiotemporal Regulation of Epithelial-Mesenchymal Transition Is Essential for Squamous Cell Carcinoma Metastasis. *Cancer Cell* 2012;22:725–36 [PubMed: 23201165]
82. Yu M, Bardia A, Wittner BS, Stott SL, Smas ME, Ting DT, et al. Circulating breast tumor cells exhibit dynamic changes in epithelial and mesenchymal composition. *Science* 2013;339:580–4 [PubMed: 23372014]
83. Nieto MA. Epithelial plasticity: a common theme in embryonic and cancer cells. *Science* 2013;342:1234850 [PubMed: 24202173]
84. Saitoh M Involvement of partial EMT in cancer progression. *J Biochem* 2018;164:257–64 [PubMed: 29726955]
85. Tsuji T, Ibaragi S, Hu GF. Epithelial-mesenchymal transition and cell cooperativity in metastasis. *Cancer Res* 2009;69:7135–9 [PubMed: 19738043]
86. Tsuji T, Ibaragi S, Shima K, Hu MG, Katsurano M, Sasaki A, et al. Epithelial-mesenchymal transition induced by growth suppressor p12CDK2-AP1 promotes tumor cell local invasion but suppresses distant colony growth. *Cancer Res* 2008;68:10377–86 [PubMed: 19074907]
87. Zheng X, Carstens JL, Kim J, Scheible M, Kaye J, Sugimoto H, et al. Epithelial-to-mesenchymal transition is dispensable for metastasis but induces chemoresistance in pancreatic cancer. *Nature* 2015;527:525–30 [PubMed: 26560028]

88. Fischer KR, Durrans A, Lee S, Sheng J, Li F, Wong ST, et al. Epithelial-to-mesenchymal transition is not required for lung metastasis but contributes to chemoresistance. *Nature* 2015;527:472–6 [PubMed: 26560033]
89. Esserman LJ, Varma M. Should we rename low risk cancers? *BMJ* 2019;364:k4699 [PubMed: 30674473]
90. Liotta LA. Tumor Invasion and Metastases Role of the Extracellular-Matrix - Rhoads Memorial Award Lecture. *Cancer Res* 1986;46:1–7 [PubMed: 2998604]
91. Friedl P, Locker J, Sahai E, Segall JE. Classifying collective cancer cell invasion. *Nat Cell Biol* 2012;14:777–83 [PubMed: 22854810]
92. Chambers AF, Matrisian LM. Changing views of the role of matrix metalloproteinases in metastasis. *J Natl Cancer Inst* 1997;89:1260–70 [PubMed: 9293916]
93. Naba A, Clauser KR, Lamar JM, Carr SA, Hynes RO. Extracellular matrix signatures of human mammary carcinoma identify novel metastasis promoters. *Elife* 2014;3:e01308 [PubMed: 24618895]
94. Salvador F, Martin A, Lopez-Menendez C, Moreno-Bueno G, Santos V, Vazquez-Naharro A, et al. Lysyl Oxidase-like Protein LOXL2 Promotes Lung Metastasis of Breast Cancer. *Cancer Res* 2017;77:5846–59 [PubMed: 28720577]
95. Moon HJ, Finney J, Xu L, Moore D, Welch DR, Mure M. MCF-7 cells expressing nuclear associated lysyl oxidase-like 2 (LOXL2) exhibit an epithelial-to-mesenchymal transition (EMT) phenotype and are highly invasive in vitro. *J Biol Chem* 2013;288:30000–8 [PubMed: 24014025]
96. Patel DF, Peiro T, Shoemark A, Akthar S, Walker SA, Grabiec AM, et al. An extracellular matrix fragment drives epithelial remodeling and airway hyperresponsiveness. *Sci Transl Med* 2018;10
97. Arroyo AG, Iruela-Arispe ML. Extracellular matrix, inflammation, and the angiogenic response. *Cardiovasc Res* 2010;86:226–35 [PubMed: 20154066]
98. Duca L, Floquet N, Alix AJ, Haye B, Debelle L. Elastin as a matrikine. *Crit Rev Oncol Hematol* 2004;49:235–44 [PubMed: 15036263]
99. Tran KT, Griffith L, Wells A. Extracellular matrix signaling through growth factor receptors during wound healing. *Wound Repair Regen* 2004;12:262–8 [PubMed: 15225204]
100. Liotta LA. Cancer cell invasion and metastasis. *Sci Am* 1992;266:54–9, 62–3
101. Hehlhans S, Haase M, Cordes N. Signalling via integrins: implications for cell survival and anticancer strategies. *Biochim Biophys Acta* 2007;1775:163–80 [PubMed: 17084981]
102. Schwartz MA, Ginsberg MH. Networks and crosstalk: integrin signalling spreads. *Nat Cell Biol* 2002;4:E65–8 [PubMed: 11944032]
103. Hamidi H, Ivaska J. Every step of the way: integrins in cancer progression and metastasis. *Nat Rev Cancer* 2018;18:533–48 [PubMed: 30002479]
104. Fingleton B Matrix metalloproteinases: roles in cancer and metastasis. *Front Biosci* 2006;11:479–91 [PubMed: 16146745]
105. Coussens LM, Fingleton B, Matrisian LM. Cancer therapy - Matrix metalloproteinase inhibitors and cancer: Trials and tribulations. *Science* 2002;295:2387–92 [PubMed: 11923519]
106. Egeblad M, Werb Z. New functions for the matrix metalloproteinases in cancer progression. *Nat Rev Cancer* 2002;2:161–74 [PubMed: 11990853]
107. Mason SD, Joyce JA. Proteolytic networks in cancer. *Trends Cell Biol* 2011;21:228–37 [PubMed: 21232958]
108. Allgayer H Translational research on u-PAR. *Eur J Cancer* 2010;46:1241–51 [PubMed: 20362429]
109. Denais CM, Gilbert RM, Isermann P, McGregor AL, te Lindert M, Weigel B, et al. Nuclear envelope rupture and repair during cancer cell migration. *Science* 2016;352:353–8 [PubMed: 27013428]
110. Weaver AM. Invadopodia: specialized cell structures for cancer invasion. *Clin Exp Metastasis* 2006;23:97–105 [PubMed: 16830222]
111. Revach OY, Geiger B. The interplay between the proteolytic, invasive, and adhesive domains of invadopodia and their roles in cancer invasion. *Cell Adh Migr* 2013;8



112. Murphy DA, Courtneidge SA. The ‘ins’ and ‘outs’ of podosomes and invadopodia: characteristics, formation and function. *Nat Rev Mol Cell Biol* 2011;12:413–26 [PubMed: 21697900]
113. Charras G, Sahai E. Physical influences of the extracellular environment on cell migration. *Nat Rev Mol Cell Biol* 2014;15:813–24 [PubMed: 25355506]
114. Bonnans C, Chou J, Werb Z. Remodelling the extracellular matrix in development and disease. *Nat Rev Mol Cell Biol* 2014;15:786–801 [PubMed: 25415508]
115. Huang S, Ingber DE. Cell tension, matrix mechanics, and cancer development. *Cancer Cell* 2005;8:175–6 [PubMed: 16169461]
116. Mouw JK, Ou G, Weaver VM. Extracellular matrix assembly: a multiscale deconstruction. *Nat Rev Mol Cell Biol* 2014;15:771–85 [PubMed: 25370693]
117. Kumar S, Weaver VM. Mechanics, malignancy, and metastasis: the force journey of a tumor cell. *Cancer Metastasis Rev* 2009;28:113–27 [PubMed: 19153673]
118. Erdogan B, Ao M, White LM, Means AL, Brewer BM, Yang L, et al. Cancer-associated fibroblasts promote directional cancer cell migration by aligning fibronectin. *J Cell Biol* 2017;216:3799–816 [PubMed: 29021221]
119. Friedl P, Wolf K. Proteolytic interstitial cell migration: a five-step process. *Cancer Metastasis Rev* 2009;28:129–35 [PubMed: 19153672]
120. Friedl P, Wolf K. Tube travel: the role of proteases in individual and collective cancer cell invasion. *Cancer Res* 2008;68:7247–9 [PubMed: 18794108]
121. Allavena P, Sica A, Garlanda C, Mantovani A. The Yin-Yang of tumor-associated macrophages in neoplastic progression and immune surveillance. *Immunol Rev* 2008;222:155–61 [PubMed: 18364000]
122. Carron EC, Homra S, Rosenberg J, Coffelt SB, Kittrell F, Zhang Y, et al. Macrophages promote the progression of premalignant mammary lesions to invasive cancer. *Oncotarget* 2017;8:50731–46 [PubMed: 28881599]
123. Piccard H, Muschel RJ, Opdenakker G. On the dual roles and polarized phenotypes of neutrophils in tumor development and progression. *Crit Rev Oncol Hematol* 2012;82:296–309 [PubMed: 21798756]
124. Attieh Y, Vignjevic DM. The hallmarks of CAFs in cancer invasion. *Eur J Cell Biol* 2016;95:493–502 [PubMed: 27575401]
125. Aeed PA, Nakajima M, Welch DR. The role of polymorphonuclear leukocytes (PMN) on the growth and metastatic potential of 13762NF mammary adenocarcinoma cells. *Int J Cancer* 1988;42:748–59 [PubMed: 2846449]
126. McGary CT, Miele ME, Welch DR. Highly metastatic 13762NF rat mammary adenocarcinoma cell clones stimulate bone marrow by secretion of granulocyte-macrophage colony-stimulating factor/interleukin-3 activity. *Am J Pathol* 1995;147:1668–81 [PubMed: 7495292]
127. Safari E, Ghorghanlu S, Ahmadi-Khiavi H, Mehranfar S, Rezaei R, Motalebnezhad M. Myeloid-derived suppressor cells and tumor: Current knowledge and future perspectives. *J Cell Physiol* 2018;0
128. Talmadge JE, Donkor M, Scholar E. Inflammatory cell infiltration of tumors: Jekyll or Hyde. *Cancer Metastasis Rev* 2007;26:373–400 [PubMed: 17717638]
129. Wyckoff JB, Wang Y, Lin EY, Li JF, Goswami S, Stanley ER, et al. Direct visualization of macrophage-assisted tumor cell intravasation in mammary tumors. *Cancer Res* 2007;67:2649–56 [PubMed: 17363585]
130. Yamaguchi H, Wyckoff J, Condeelis J. Cell migration in tumors. *Curr Opin Cell Biol* 2005;17:559–64 [PubMed: 16098726]
131. Condeelis J, Pollard JW. Macrophages: obligate partners for tumor cell migration, invasion, and metastasis. *Cell* 2006;124:263–6 [PubMed: 16439202]
132. Huber AR, Kunkel SL, Todd RF 3rd, Weiss SJ. Regulation of transendothelial neutrophil migration by endogenous interleukin-8. *Science* 1991;254:99–102 [PubMed: 1718038]
133. Nicolson GL. Metastatic tumor cell attachment and invasion assay utilizing vascular endothelial cell monolayers. *J Histochem Cytochem* 1982;30:214–20 [PubMed: 7061823]



134. DP M, Biziato D, Petrova TV. Microenvironmental regulation of tumour angiogenesis. *Nat Rev Cancer* 2017;17:457–74 [PubMed: 28706266]
135. Stacker SA, Williams SP, Karnezis T, Shayan R, Fox SB, Achen MG. Lymphangiogenesis and lymphatic vessel remodelling in cancer. *Nat Rev Cancer* 2014;14:159–72 [PubMed: 24561443]
136. Keck PJ, Hauser SD, Krivi G, Sanzo K, Warren T, Feder J, et al. Vasular permeability factor, an endothelial cell mitogen related to PDGF. *Science* 1989;246:1309–12 [PubMed: 2479987]
137. Kramer RH, Nicolson GL. Interactions of tumor cells with vascular endothelial cell monolayers: a model for metastatic invasion. *Proc Natl Acad Sci U S A* 1979;76:5704–8 [PubMed: 293673]
138. Overholtzer M, Mailloux AA, Mouneimne G, Normand G, Schnitt SJ, King RW, et al. A nonapoptotic cell death process, entosis, that occurs by cell-in-cell invasion. *Cell* 2007;131:966–79 [PubMed: 18045538]
139. Coman DR. Decreased mutual adhesiveness, a property of cells from squamous cell carcinomas. *Cancer Res* 1944;4:625–9
140. Zeidman I, Mc CM, Coman DR. Factors affecting the number of tumor metastases; experiments with a transplantable mouse tumor. *Cancer Res* 1950;10:357–9 [PubMed: 15420702]
141. Wong AD, Searson PC. Mitosis-Mediated Intravasation in a Tissue-Engineered Tumor-Microvessel Platform. *Cancer Res* 2017;77:6453–61 [PubMed: 28923855]
142. Butler TP, Gullino PM. Quantitation of Cell Shedding into Efferent Blood of Mammary Adenocarcinoma. *Cancer Res* 1975;35:512–6 [PubMed: 1090362]
143. Jain RK. Transport of molecules accross tumor vasculature. *Cancer Metastasis Rev* 1987;5:59–93 [PubMed: 3327633]
144. Fidler IJ. Metastasis: quantitative analysis of distribution and fate of tumor emboli labeled with <sup>125</sup>I-5-iodo-2'-deoxyuridine. *J Natl Cancer Inst* 1970;45:773–82 [PubMed: 5513503]
145. Tarin D, Price JE, Kettlewell MG, Souter RG, Vass AC, Crossley B. Mechanisms of human tumor metastasis studied in patients with peritoneovenous shunts. *Cancer Res* 1984;44:3584–92 [PubMed: 6744281]
146. Ao Z, Shah SH, Machlin LM, Parajuli R, Miller PC, Rawal S, et al. Identification of Cancer-Associated Fibroblasts in Circulating Blood from Patients with Metastatic Breast Cancer. *Cancer Res* 2015;75:4681–7 [PubMed: 26471358]
147. Fidler IJ. The relationship of embolic heterogeneity, number size and viability to the incidence of experimental metastasis. *Eur J Cancer* 1973;9:223–7 [PubMed: 4787857]
148. Updyke TV, Nicolson GL. Malignant melanoma cell lines selected in vitro for increased homotypic adhesion properties have increased experimental metastasis potential. *CEM* 1986;4:273–84
149. Weiss L Comments on Hematogenous Metastatic Patterns in Humans as Revealed by Autopsy. *Clin Exp Metastasis* 1992;10:191–9 [PubMed: 1582089]
150. Ewing J Neoplastic disease. Philadelphia: W.B. Saunders; 1919.
151. Gkountela S, Castro-Giner F, Szczerba BM, Vetter M, Landin J, Scherrer R, et al. Circulating Tumor Cell Clustering Shapes DNA Methylation to Enable Metastasis Seeding. *Cell* 2019;176:98–112 e14 [PubMed: 30633912]
152. Krog BL, Henry MD. Biomechanics of the Circulating Tumor Cell Microenvironment. *Adv Exp Med Biol* 2018;1092:209–33 [PubMed: 30368755]
153. Paoletti C, Li YF, Muniz MC, Kidwell KM, Aung K, Thomas DG, et al. Significance of Circulating Tumor Cells in Metastatic Triple-Negative Breast Cancer Patients within a Randomized, Phase II Trial: TBCRC 019. *Clin Cancer Res* 2015;21:2771–9 [PubMed: 25779948]
154. Aceto N, Toner M, Maheswaran S, Haber DA. En Route to Metastasis: Circulating Tumor Cell Clusters and Epithelial-to-Mesenchymal Transition *Trends in Cancer*. Volume 1: Elsevier; 2015 p 44–52. [PubMed: 28741562]
155. Aceto N, Bardia A, Miyamoto DT, Donaldson MC, Wittner BS, Spencer JA, et al. Circulating tumor cell clusters are oligoclonal precursors of breast cancer metastasis. *Cell* 2014;158:1110–22 [PubMed: 25171411]

156. Crissman JD, Hatfield J, Schaldenbrand M, Sloane BF, Honn KV. Arrest and extravasation of B16 amelanotic melanoma in murine lungs: A light and EM study. *Lab Invest* 1985;53:470–8 [PubMed: 4046557]
157. Ito S, Nakanishi H, Ikehara Y, Kato T, Kasai Y, Ito K, et al. Real-time observation of micrometastasis formation in the living mouse liver using a green fluorescent protein gene-tagged rat tongue carcinoma cell line. *Int J Cancer* 2001;93:212–7 [PubMed: 11410868]
158. Springer TA. Traffic signals for lymphocyte recirculation and leukocyte emigration: the multistep paradigm. *Cell* 1994;76:301–14 [PubMed: 7507411]
159. Stupack DG, Puente XS, Boutsabouloy S, Storgard CM, Cheresh DA. Apoptosis of adherent cells by recruitment of caspase-8 to unligated integrins. *J Cell Biol* 2001;155:459–70 [PubMed: 11684710]
160. Alby L, Auerbach R. Differential adhesion of tumor cells to capillary endothelial cells *in vitro*. *Proc Natl Acad Sci U S A* 1984;81:5739–43 [PubMed: 6592584]
161. Auerbach R, Lu WC, Pardon E, Gumkowski F, Kaminska G, Kaminski MS. Specificity of adhesion between murine tumor cells and capillary endothelium: an *in vitro* correlate of preferential metastasis *in vivo*. *Cancer Res* 1987;47:1492–6 [PubMed: 3815350]
162. Belloni PN, Tressler RJ. Microvascular endothelial cell heterogeneity: Interactions with leukocytes and tumor cells. *Cancer Metastasis Rev* 1989;8:353–89
163. Belloni PN, Nicolson GL. Differential Expression of Cell-Surface Glycoproteins on Various Organ-Derived Microvascular Endothelia and Endothelial-Cell Cultures. *J Cell Physiol* 1988;136:398–410 [PubMed: 3170638]
164. Pasqualini R, Arap W, McDonald DM. Probing the structural and molecular diversity of tumor vasculature. *Trends Mol Med* 2002;8:563–71 [PubMed: 12470989]
165. Pasqualini R, Ruoslahti E. Organ targeting *in vivo* using phage display peptide libraries. *Nature* 1996;380:364–6 [PubMed: 8598934]
166. Lala PK, Orucevic A. Role of nitric oxide in tumor progression: lessons from experimental tumors. *Cancer Metastasis Rev* 1998;17:91–106 [PubMed: 9544425]
167. Orr FW, Warner DJ. Effects of neutrophil-mediated pulmonary endothelial injury on the localization and metastasis of circulating Walker carcinosarcoma cells. *Invasion Metastasis* 1987;7:183–96 [PubMed: 3596984]
168. Orr FW, Adamson IYR, Young L. Promotion of Pulmonary Metastasis in Mice by Bleomycin-Induced Endothelial Injury. *Cancer Res* 1986;46:891–7 [PubMed: 2416435]
169. Sugarbaker EV, Ketcham AS. Mechanisms and prevention of cancer dissemination: an overview. *Semin Oncol* 1977;4:19–32 [PubMed: 841346]
170. Cho EJ, Kim MH, Cha SH, Hyun S, Jeong S, Lee JD. Breast Cancer Cutaneous Metastasis at Core Needle Biopsy Site. *Annals of Dermatology* 2010;22:238–40 [PubMed: 20548926]
171. Retsky MW, Demicheli R, Hrushesky WJ, Baum M, Gukas ID. Dormancy and surgery-driven escape from dormancy help explain some clinical features of breast cancer. *APMIS* 2008;116:730–41 [PubMed: 18834415]
172. Osborne L. Leukocyte adhesion to endothelium in inflammation. *Cell* 1990;62:3–6 [PubMed: 2194672]
173. Chambers AF, Groom AC, MacDonald IC. Dissemination and growth of cancer cells in metastatic sites. *Nat Rev Cancer* 2002;2:563–72 [PubMed: 12154349]
174. Al-Mehdi AB, Tozawa K, Fisher AB, Shientag L, Lee A, Muschel RJ. Intravascular origin of metastasis from the proliferation of endothelium-attached tumor cells: a new model for metastasis. *Nat Med* 2000;6:100–2 [PubMed: 10613833]
175. Naumov GN, Folkman J, Straume O, Akslen LA. Tumor-vascular interactions and tumor dormancy. *APMIS* 2008;116:569–85 [PubMed: 18834403]
176. Hendrix MJ, Seftor EA, Hess AR, Seftor RE. Vasculogenic mimicry and tumour-cell plasticity: lessons from melanoma. *Nat Rev Cancer* 2003;3:411–21 [PubMed: 12778131]
177. Kaplan RN, Riba RD, Zacharoulis S, Bramley AH, Vincent L, Costa C, et al. VEGFR1-positive haematopoietic bone marrow progenitors initiate the pre-metastatic niche. *Nature* 2005;438:820–7 [PubMed: 16341007]

178. Wculek SK, Malanchi I. Neutrophils support lung colonization of metastasis-initiating breast cancer cells. *Nature* 2015;528:413–7 [PubMed: 26649828]
179. Albregues J, Shields MA, Ng D, Park CG, Ambrico A, Poindexter ME, et al. Neutrophil extracellular traps produced during inflammation awaken dormant cancer cells in mice. *Science* 2018;361
180. Cedervall J, Zhang YY, Olsson AK. Tumor-Induced NETosis as a Risk Factor for Metastasis and Organ Failure. *Cancer Res* 2016;76:4311–5 [PubMed: 27402078]
181. Demers M, Krause DS, Schatzberg D, Martinod K, Voorhees JR, Fuchs TA, et al. Cancers predispose neutrophils to release extracellular DNA traps that contribute to cancer-associated thrombosis. *Proc Natl Acad Sci USA* 2012;109:13076–81 [PubMed: 22826226]
182. Langley RR, Fidler IJ. The seed and soil hypothesis revisited—the role of tumor-stroma interactions in metastasis to different organs. *Int J Cancer* 2011;128:2527–35 [PubMed: 21365651]
183. Paget S The distribution of secondary growths in cancer of the breast. *Lancet* 1889;1:571–3
184. Beadnell TC, Scheid AD, Vivian CJ, Welch DR. Roles of the mitochondrial genetics in cancer metastasis: not to be ignored any longer. *Cancer Metastasis Rev* 2018;37:615–32 [PubMed: 30542781]
185. Brinker AE, Vivian CJ, Koestler DC, Tsue TT, Jensen RA, Welch DR. Mitochondrial Haplotype Alters Mammary Cancer Tumorigenicity and Metastasis in an Oncogenic Driver-Dependent Manner. *Cancer Res* 2017;77:6941–9 [PubMed: 29070615]
186. Feeley KP, Bray AW, Westbrook DG, Johnson LW, Kesterson RA, Ballinger SW, et al. Mitochondrial Genetics Regulate Breast Cancer Tumorigenicity and Metastatic Potential. *Cancer Res* 2015;75:4429–36 [PubMed: 26471915]
187. Telonis AG, Rigoutsos I. Race Disparities in the Contribution of miRNA Isoforms and tRNA-Derived Fragments to Triple-Negative Breast Cancer. *Cancer Res* 2018;78:1140–54 [PubMed: 29229607]
188. Warburg O On the origin of cancer cells. *Science* 1956;123:309–14 [PubMed: 13298683]
189. Weber GF. Metabolism in cancer metastasis. *Int J Cancer* 2016;138:2061–6 [PubMed: 26355498]
190. Valcarcel-Jimenez L, Gaude E, Torrano V, Frezza C, Carracedo A. Mitochondrial Metabolism: Yin and Yang for Tumor Progression. *Trends Endocrinol Metab* 2017;28:748–57 [PubMed: 28938972]
191. Tan AS, Baty JW, Dong LF, Bezawork-Geleta A, Endaya B, Goodwin J, et al. Mitochondrial Genome Acquisition Restores Respiratory Function and Tumorigenic Potential of Cancer Cells without Mitochondrial DNA. *Cell Metab* 2015;21:81–94 [PubMed: 25565207]
192. Porporato PE, Sonveaux P. Paving the way for therapeutic prevention of tumor metastasis with agents targeting mitochondrial superoxide. *Mol Cell Oncol* 2015;2:e968043 [PubMed: 27308448]
193. Liu W, Beck BH, Vaidya KS, Nash KT, Feeley KP, Ballinger SW, et al. Metastasis suppressor KISS1 appears to reverse the Warburg effect by enhancing mitochondrial biogenesis. *Cancer Res* 2013;74:954–63 [PubMed: 24351292]
194. LeBleu VS, O’Connell JT, Gonzalez Herrera KN, Wikman H, Pantel K, Haigis MC, et al. PGC-1alpha mediates mitochondrial biogenesis and oxidative phosphorylation in cancer cells to promote metastasis. *Nat Cell Biol* 2014;16:992–1003, 1–15 [PubMed: 25241037]
195. Santidrian AF, Matsuno-Yagi A, Ritland M, Seo BB, LeBoeuf SE, Gay LJ, et al. Mitochondrial complex I activity and NAD<sup>+</sup>/NADH balance regulate breast cancer progression. *J Clin Invest* 2013;123:1068–81 [PubMed: 23426180]
196. Seo JH, Agarwal E, Bryant KG, Caino MC, Kim ET, Kossenkov AV, et al. Syntaphilin Ubiquitination Regulates Mitochondrial Dynamics and Tumor Cell Movements. *Cancer Res* 2018;78:4215–28 [PubMed: 29898993]
197. Altieri DC. Mitochondrial dynamics and metastasis. *Cell Mol Life Sci* 2018
198. Lisanti S, Garlick DS, Bryant KG, Tavecchio M, Mills GB, Lu Y, et al. Transgenic Expression of the Mitochondrial Chaperone TNFR-associated Protein 1 (TRAP1) Accelerates Prostate Cancer Development. *J Biol Chem* 2016;291:25247–54 [PubMed: 27754870]

199. Caino MC, Seo JH, Aguinaldo A, Wait E, Bryant KG, Kossenkov AV, et al. A neuronal network of mitochondrial dynamics regulates metastasis. *Nat Commun* 2016;7:13730 [PubMed: 27991488]
200. Mowers EE, Sharifi MN, Macleod KF. Autophagy in cancer metastasis. *Oncogene* 2017;36:1619–30 [PubMed: 27593926]
201. Vlahakis A, Debnath J. The Interconnections between Autophagy and Integrin-Mediated Cell Adhesion. *J Mol Biol* 2017;429:515–30 [PubMed: 27932295]
202. Pauli BU, Augustin-Voss HG, el-Sabban ME, Johnson RC, Hammer DA. Organ-preference of metastasis. The role of endothelial cell adhesion molecules. *Cancer Metastasis Rev* 1990;9:175–89 [PubMed: 2292135]
203. Nicolson GL, Belloni PN, Tressler RJ, Dulski K, Inoue T, Cavanaugh PG. Adhesive, invasive, and growth properties of selected metastatic variants of a murine large-cell lymphoma. *Invasion Metastasis* 1989;9:102–16 [PubMed: 2708004]
204. Nicolson GL, Dulski K, Basson C, Welch DR. Preferential organ attachment and invasion in vitro by B16 melanoma cells selected for differing metastatic colonization and invasive properties. *Invasion Metastasis* 1985;5:144–58 [PubMed: 3997411]
205. Aguirre-Ghiso JA, Sosa MS. Emerging Topics on Disseminated Cancer Cell Dormancy and the Paradigm of Metastasis. *Annual Review of Cancer Biology* 2018;2:377–93
206. Hosseini H, Obradovic MM, Hoffmann M, Harper KL, Sosa MS, Werner-Klein M, et al. Early dissemination seeds metastasis in breast cancer. *Nature* 2016
207. Hoffman RM. Patient-derived orthotopic xenografts: better mimic of metastasis than subcutaneous xenografts. *Nature Reviews Cancer* 2015;15:451–2
208. Ghinassi B, Martelli F, Verrucci M, D'Amore E, Migliaccio G, Vannucchi AM, et al. Evidence for organ-specific stem cell microenvironments. *J Cell Physiol* 2010;223:460–70 [PubMed: 20112287]
209. Minn AJ, Kang Y, Serganova I, Gupta GP, Giri DD, Doubrovin M, et al. Distinct organ-specific metastatic potential of individual breast cancer cells and primary tumors. *J Clin Invest* 2005;115:44–55 [PubMed: 15630443]
210. Boire A, Zou Y, Shieh J, Macalinao DG, Pentsova E, Massague J. Complement Component 3 Adapts the Cerebrospinal Fluid for Leptomeningeal Metastasis. *Cell* 2017;168:1101–13 e13 [PubMed: 28283064]
211. Bos PD, Zhang XH, Nadal C, Shu W, Gomis RR, Nguyen DX, et al. Genes that mediate breast cancer metastasis to the brain. *Nature* 2009;459:1005–9 [PubMed: 19421193]
212. van der Weyden L, Arends MJ, Campbell AD, Bald T, Wardle-Jones H, Griggs N, et al. Genome-wide in vivo screen identifies novel host regulators of metastatic colonization. *Nature* 2017;541:233–6 [PubMed: 28052056]
213. Nicolson GL, Dulski KM. Organ Specificity of Metastatic Tumor Colonization Is Related to Organ-Selective Growth-Properties of Malignant-Cells. *Int J Cancer* 1986;38:289–94 [PubMed: 3733263]
214. Altorki NK, Markowitz GJ, Gao D, Port JL, Saxena A, Stiles B, et al. The lung microenvironment: an important regulator of tumour growth and metastasis. *Nat Rev Cancer* 2019;19:9–31 [PubMed: 30532012]
215. Zhuang X, Zhang H, Li X, Li X, Cong M, Peng F, et al. Differential effects on lung and bone metastasis of breast cancer by Wnt signalling inhibitor DKK1. *Nat Cell Biol* 2017;19:1274–85 [PubMed: 28892080]
216. Bowman RL, Klemm F, Akkari L, Pyonteck SM, Sevenich L, Quail DF, et al. Macrophage Ontogeny Underlies Differences in Tumor-Specific Education in Brain Malignancies. *Cell Rep* 2016;17:2445–59 [PubMed: 27840052]
217. Kim SJ, Kim JS, Park ES, Lee JS, Lin Q, Langley RR, et al. Astrocytes upregulate survival genes in tumor cells and induce protection from chemotherapy. *Neoplasia* 2011;13:286–98 [PubMed: 21390191]
218. Jackson W 3rd, Sosnoski DM, Ohanessian SE, Chandler P, Mobley A, Meisel KD, et al. Role of Megakaryocytes in Breast Cancer Metastasis to Bone. *Cancer Res* 2017;77:1942–54 [PubMed: 28202531]

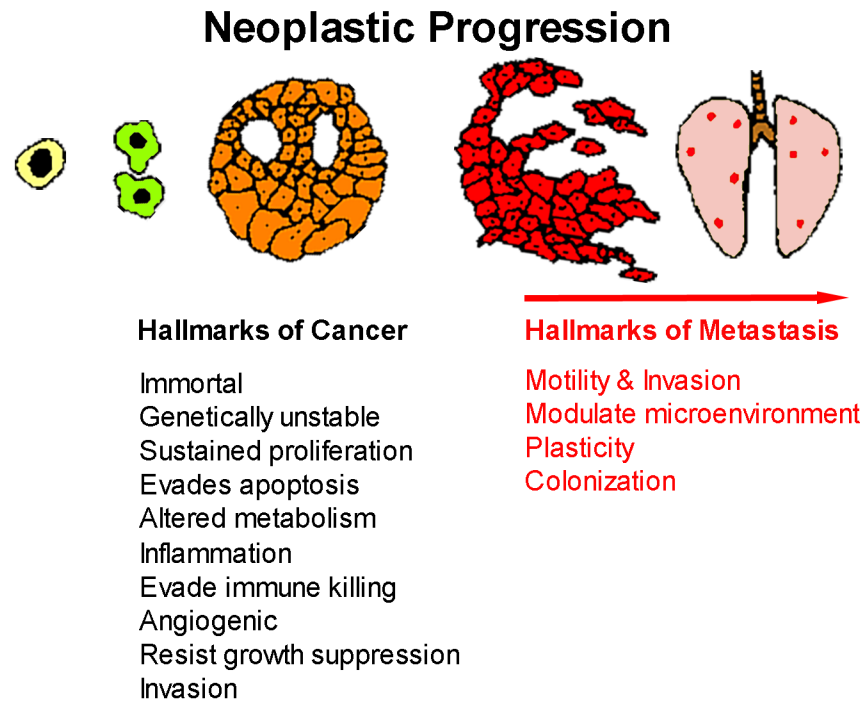
219. Ku AW, Muhitch JB, Powers CA, Diehl M, Kim M, Fisher DT, et al. Tumor-induced MDSC act via remote control to inhibit L-selectin-dependent adaptive immunity in lymph nodes. *Elife* 2016;5
220. Muller A, Homey B, Soto H, Ge N, Catron D, Buchanan ME, et al. Involvement of chemokine receptors in breast cancer metastasis. *Nature* 2001;410:50–6 [PubMed: 11242036]
221. Gay LJ, Malanchi I. The sleeping ugly: Tumour microenvironment's act to make or break the spell of dormancy. *Biochim Biophys Acta Rev Cancer* 2017;1868:231–8 [PubMed: 28501561]
222. Yeh AC, Ramaswamy S. Mechanisms of Cancer Cell Dormancy-Another Hallmark of Cancer? *Cancer Res* 2015
223. Sosa MS, Bragado P, Aguirre-Ghiso JA. Mechanisms of disseminated cancer cell dormancy: an awakening field. *Nat Rev Cancer* 2014;14:611–22 [PubMed: 25118602]
224. Hadfield G The dormant cancer cell. *Br Med J* 1954;2:607–10 [PubMed: 13190204]
225. Vishnoi M, Peddibhotla S, Yin W, A TS, George GC, Hong DS, et al. The isolation and characterization of CTC subsets related to breast cancer dormancy. *Sci Rep* 2015;5:17533 [PubMed: 26631983]
226. Naumov GN, Bender E, Zurakowski D, Kang SY, Sampson D, Flynn E, et al. A model of human tumor dormancy: an angiogenic switch from the nonangiogenic phenotype. *J Natl Cancer Inst* 2006;98:316–25 [PubMed: 16507828]
227. Manjili MH. A Theoretical Basis for the Efficacy of Cancer Immunotherapy and Immunogenic Tumor Dormancy: The Adaptation Model of Immunity. *Adv Cancer Res* 2018;137:17–36 [PubMed: 29405975]
228. Yumoto K, Eber MR, Berry JE, Taichman RS, Shiozawa Y. Molecular pathways: niches in metastatic dormancy. *Clin Cancer Res* 2014;20:3384–9 [PubMed: 24756372]
229. Kaur A, Ecker BL, Douglass SM, Kugel CH 3rd, Webster MR, Almeida FV, et al. Remodeling of the Collagen Matrix in Aging Skin Promotes Melanoma Metastasis and Affects Immune Cell Motility. *Cancer Discov* 2019;9:64–81 [PubMed: 30279173]
230. Fidler IJ, Nicolson GL. Fate of recirculating B16 melanoma metastatic variant cells in parabiotic syngeneic recipients. *J Natl Cancer Inst* 1977;58:1867–72 [PubMed: 864765]
231. Bartkowiak K, Kwiatkowski M, Buck F, Gorges TM, Nilse L, Assmann V, et al. Disseminated Tumor Cells Persist in the Bone Marrow of Breast Cancer Patients through Sustained Activation of the Unfolded Protein Response. *Cancer Res* 2015;75:5367–77 [PubMed: 26573792]
232. Pantel K, Cote RJ, Fodstad O. Detection and clinical importance of micrometastatic disease. *J Natl Cancer Inst* 1999;91:1113–24 [PubMed: 10393719]
233. Friberg S, Nystrom A Cancer Metastases: Early Dissemination and Late Recurrences. *Cancer Growth Metastasis* 2015;8:43–9 [PubMed: 26640389]
234. Harper KL, Sosa MS, Entenberg D, Hosseini H, Cheung JF, Nobre R, et al. Mechanism of early dissemination and metastasis in Her2(+) mammary cancer. *Nature* 2016
235. Leonard GD, Swain SM. Ductal carcinoma in situ, complexities and challenges. *J Natl Cancer Inst* 2004;96:906–20 [PubMed: 15199110]
236. Silver SA, Tavassoli FA. Mammary ductal carcinoma in situ with microinvasion. *Cancer* 1998;82:2382–90 [PubMed: 9635531]
237. Narod SA, Iqbal J, Giannakeas V, Sopik V, Sun P. Breast Cancer Mortality After a Diagnosis of Ductal Carcinoma In Situ. *JAMA Oncol* 2015;1:888–96 [PubMed: 26291673]
238. Turajlic S, Swanton C. Metastasis as an evolutionary process. *Science* 2016;352:169–75 [PubMed: 27124450]
239. Subarsky P, Hill RP. The hypoxic tumour microenvironment and metastatic progression. *Clin Exp Metastasis* 2003;20:237–50 [PubMed: 12741682]
240. De Jaeger K, Kavanagh MC, Hill RP. Relationship of hypoxia to metastatic ability in rodent tumours. *Br J Cancer* 2001;84:1280–5 [PubMed: 11336482]
241. Gilkes DM, Semenza GL, Wirtz D. Hypoxia and the extracellular matrix: drivers of tumour metastasis. *Nat Rev Cancer* 2014;14:430–9 [PubMed: 24827502]



242. Gilkes DM, Xiang L, Lee SJ, Chaturvedi P, Hubbi ME, Wirtz D, et al. Hypoxia-inducible factors mediate coordinated RhoA-ROCK1 expression and signaling in breast cancer cells. *Proc Natl Acad Sci U S A* 2014;111:E384–93 [PubMed: 24324133]
243. Castro-Vega LJ, Jouravleva K, Ortiz-Montero P, Liu WY, Galeano JL, Romero M, et al. The senescent microenvironment promotes the emergence of heterogeneous cancer stem-like cells. *Carcinogenesis* 2015;36:1180–92 [PubMed: 26168819]
244. Pan H, Gray R, Braybrooke J, Davies C, Taylor C, McGale P, et al. 20-Year Risks of Breast-Cancer Recurrence after Stopping Endocrine Therapy at 5 Years. *N Engl J Med* 2017;377:1836–46 [PubMed: 29117498]
245. Alix-Panabieres C, Pantel K. Clinical Applications of Circulating Tumor Cells and Circulating Tumor DNA as Liquid Biopsy. *Cancer Discov* 2016;6:479–91 [PubMed: 26969689]
246. Christiano AP, Yoshida BA, Dubauskas Z, Sokoloff M, Rinker-Schaeffer CW. Development of markers of prostate cancer metastasis. Review and perspective. *Urol Oncol* 2000;5:217–23 [PubMed: 10973711]
247. Floor SL, Dumont JE, Maenhaut C, Raspe E. Hallmarks of cancer: of all cancer cells, all the time? *Trends Mol Med* 2012;18:509–15 [PubMed: 22795735]
248. Lawson DA, Kessenbrock K, Davis RT, Pervolarakis N, Werb Z. Tumour heterogeneity and metastasis at single-cell resolution. *Nat Cell Biol* 2018;20:1349–60 [PubMed: 30482943]
249. Welch DR. Biologic considerations for drug targeting in cancer patients. *Cancer Treat Rev* 1987;14:351–8 [PubMed: 3326669]
250. Heppner GH. Tumor heterogeneity. *Cancer Res* 1984;44:2259–65 [PubMed: 6372991]
251. Rak JW, Kerbel RS. Growth advantage (“clonal dominance”) of metastatically competent tumor cell variants expressed under selective two- or three-dimensional tissue culture conditions. *In Vitro Cell and Developmental Biology: Animal Cells* 1993;29A:742–8
252. Miller BE, McInerney D, Jackson D, Miller FR. Metabolic cooperation between mouse mammary tumor subpopulations in three-dimensional collagen gel cultures. *Cancer Res* 1986;46:89–93 [PubMed: 3940214]
253. Miller FR, Miller BE, Heppner GH. Subpopulation interactions in drug resistance, metastasis and tumor progression In: Jacquillat C, Weil M, Khayat D, editors. *Neo-adjuvant chemotherapy*. London: John Libbey & Co.; 1986 p 69–74.
254. Miller BE, Miller FR, Heppner GH. Factors affecting growth and drug sensitivity of mouse mammary tumor lines in collagen gel cultures. *Cancer Res* 1985;45:4200–5 [PubMed: 4028010]
255. Miller BE, Miller FR, Wilburn D, Heppner GH. Dominance of a tumor subpopulation line in mixed heterogeneous mouse mammary tumors. *Cancer Res* 1988;48:5747–53 [PubMed: 3167832]
256. Miller FR, Heppner GH. Cellular interactions in metastasis. *Cancer Metastasis Rev* 1990;9:21–34 [PubMed: 2208566]
257. Somarelli JA, Schaeffer D, Marengo MS, Bepler T, Rouse D, Ware KE, et al. Distinct routes to metastasis: plasticity-dependent and plasticity-independent pathways. *Oncogene* 2016;35:4302–11 [PubMed: 26751776]
258. Ishay-Ronen D, Diepenbruck M, Kalathur RKR, Sugiyama N, Tiede S, Ivanek R, et al. Gain Fat-Lose Metastasis: Converting Invasive Breast Cancer Cells into Adipocytes Inhibits Cancer Metastasis. *Cancer Cell* 2019;35:17–32 e6 [PubMed: 30645973]
259. *The Molecular Basis of Cancer Philadelphia: Elsevier - Saunders; 2015 888 p.*
260. Boral D, Vishnoi M, Liu HN, Yin W, Sprouse ML, Scamardo A, et al. Molecular characterization of breast cancer CTCs associated with brain metastasis. *Nat Commun* 2017;8:196 [PubMed: 28775303]
261. Robinson DR, Wu YM, Lonigro RJ, Vats P, Cobain E, Everett J, et al. Integrative clinical genomics of metastatic cancer. *Nature* 2017;548:297–303 [PubMed: 28783718]
262. Naxerova K, Reiter JG, Brachtel E, Lennerz JK, van de Wetering M, Rowan A, et al. Origins of lymphatic and distant metastases in human colorectal cancer. *Science* 2017;357:55–60 [PubMed: 28684519]
263. Naxerova K, Jain RK. Using tumour phylogenetics to identify the roots of metastasis in humans. *Nat Rev Clin Oncol* 2015;12:258–72 [PubMed: 25601447]

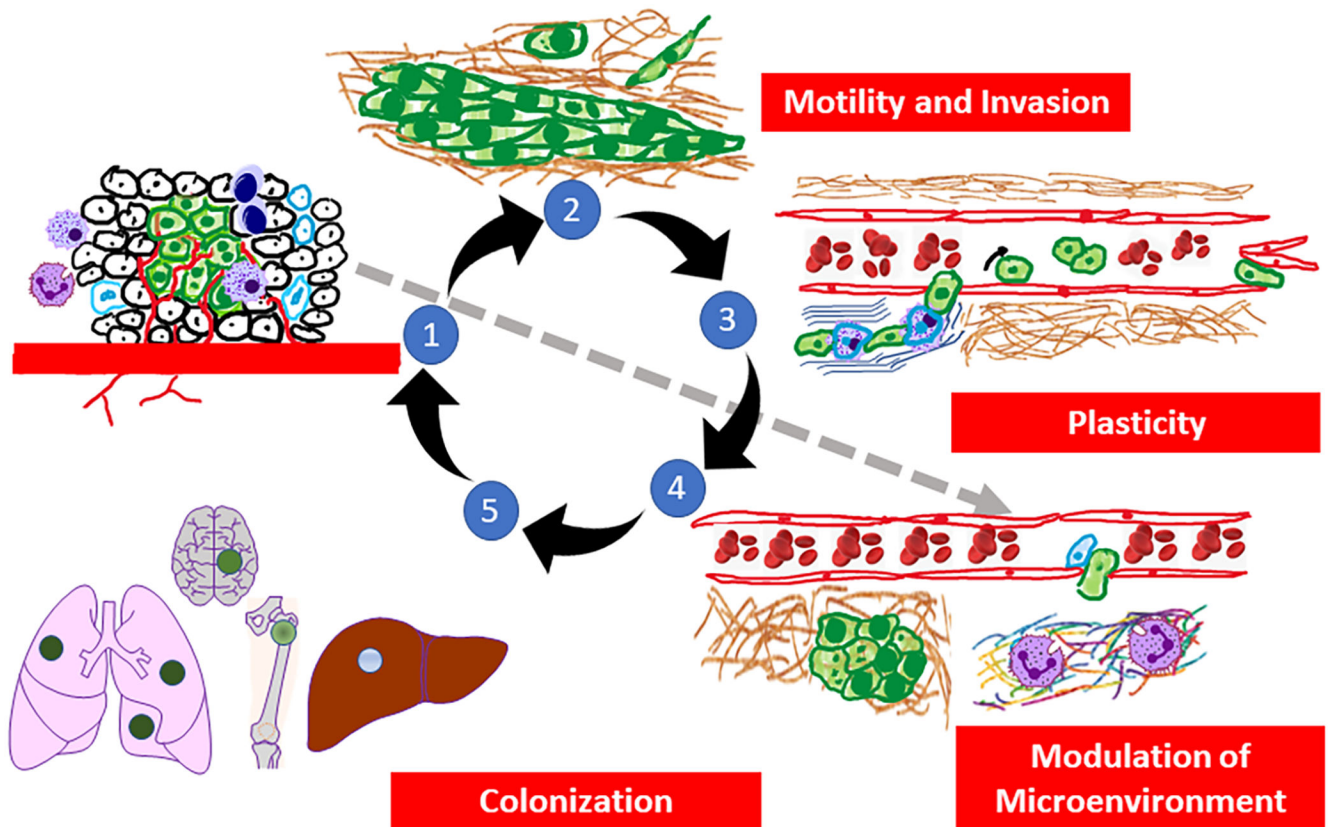


264. Lytle NK, Barber AG, Reya T. Stem cell fate in cancer growth, progression and therapy resistance. *Nat Rev Cancer* 2018;18:669–80 [PubMed: 30228301]
265. Welch DR, Milas L, Tomasovic SP, Nicolson GL. Heterogeneous response and clonal drift of sensitivities of metastatic 13762NF mammary adenocarcinoma clones to gamma-radiation *in vitro*. *Cancer Res* 1983;43:6–10 [PubMed: 6847783]
266. Welch DR, Hurst DR. Beyond the Primary Tumor: Progression, Invasion, and Metastasis In: Coleman WB, Tsongalis GJ, editors. *The Molecular Basis of Human Cancer*. New York: Springer Science+Business Media; 2017 p 203–16.



**Figure 1.**

Neoplastic progression is depicted as normal cells become transformed. Transformed cells can acquire additional characteristics to become neoplastic. Transition through a benign phase is depicted here; however, not all cells within a neoplasm acquire additional characteristics sequentially. The generation of a cancer/neoplasm is characterized by 10 “hallmarks of cancer” (4,5). Superimposed upon the hallmarks of cancer are four “hallmarks of metastasis” which are characteristics required for invasive neoplastic cells to establish macroscopic secondary (or higher-order) masses.



**Figure 2.**

The pathogenesis of hematogenous metastasis. **1.** The process of metastasis begins when neoplastic cells grow, recruit inflammatory cells, induce angiogenesis, and begin to initiate establishment of pre-metastatic niches (gray arrow), while generating mutant variants at high frequency. **2.** Neoplastic cells then begin to invade through surrounding stroma via a variety of motility mechanisms as either single cells (via EMT) or collective migration. **3.** Immune cells infiltrating the primary tumor associate with tumor cells such that neoplastic cells co-opt the invasive functions of the infiltrating immune cells to enter the vasculature (intravasation). Cells which have entered the vasculature typically roll along the endothelium but can form homotypic (tumor cell-tumor cell) or heterotypic (tumor cell-immune cell/platelet) emboli. After surviving shear forces, tumor cells selectively adhere to endothelium or arrest when vessel diameter is too small to traverse. Note that the extracellular matrix where tumor cells invaded surrounding stroma is also reorganized and can result in the release of matrikines that affect tumor cell and/or stromal behavior. **4.** Upon arrest/adhesion tumor cells exit vessels (extravasation) and interact with pre-metastatic niches which are permissive for proliferation and colonization of secondary sites. **5.** Colonization is dependent upon a combination of tumor cell and tissue-specific factors. Disseminating cells selectively colonize different tissues and the process of further dissemination (i.e., metastasizing from metastases) can occur. The four proposed hallmarks of metastasis are listed in the red boxes.

**Table 1:**

## Organotropism of metastasis

Primary Tumor Site	Common site(s) of metastasis	Sites not explained by circulatory pattern
Breast	bone, lung (pleura), liver, brain, adrenal, axillary lymph nodes, contralateral breast, ovary	bone, adrenal glands, contralateral breast, ovary
Colon	liver, lymph node, lung, direct extension into urinary bladder or stomach	
Kidney	lung, liver, bone	bone
Krukenberg adenocarcinoma	Liver, ovary	ovary
Lung	bone, brain, lymph nodes, pleura, diaphragm (by direct extension), liver, kidney, adrenal, thyroid, spleen	bone, adrenal, thyroid, spleen
Ocular (uveal) melanoma	liver	liver
Ovary	diaphragm, peritoneal surfaces, lymph nodes	
Pancreas	liver, stomach (by direct extension), colon, peritoneum	
Prostate	bone (particularly vertebrae and pelvis), lymph nodes	bone
Stomach	liver, lymph nodes, lung, bone	bone
Testes	lymph nodes, lung, liver	
Urinary bladder	lung, rectum (by direct extension), colon, prostate, ureter, vagina, bone, lymph nodes, peritoneum, pleura, liver, brain	
Uterine endometrium	lung, lymph nodes, liver, ovary	

Adapted from (49,266)