



Published in final edited form as:

*Neurosci Biobehav Rev.* 2019 July ; 102: 13–23. doi:10.1016/j.neubiorev.2019.03.023.

## Prebiotics and probiotics for depression and anxiety: A systematic review and meta-analysis of controlled clinical trials

Richard T. Liu, Rachel F. L. Walsh, and Ana E. Sheehan

Department of Psychiatry and Human Behavior, Alpert Medical School of Brown University

### Abstract

With growing interest in the gut microbiome, prebiotics and probiotics have received considerable attention as potential treatments for depression and anxiety. We conducted a random-effects meta-analysis of 34 controlled clinical trials evaluating the effects of prebiotics and probiotics on depression and anxiety. Prebiotics did not differ from placebo for depression ( $d = -.08$ ,  $p = .51$ ) or anxiety ( $d = .12$ ,  $p = .11$ ). Probiotics yielded small but significant effects for depression ( $d = -.24$ ,  $p < .01$ ) and anxiety ( $d = -.10$ ,  $p = .03$ ). Sample type was a moderator for probiotics and depression, with a larger effect observed for clinical/medical samples ( $d = -.45$ ,  $p < .001$ ) than community ones. This effect increased to medium-to-large in a preliminary analysis restricted to psychiatric samples ( $d = -.73$ ,  $p < .001$ ). There is general support for antidepressant and anxiolytic effects of probiotics, but the pooled effects were reduced by the paucity of trials with clinical samples. Additional randomized clinical trials with psychiatric samples are necessary fully to evaluate their therapeutic potential.

### Keywords

anxiety; depression; microbiome; prebiotic; probiotic

## 1. Introduction

Depression and anxiety disorders are the two most common mental health conditions, with lifetime prevalence rates in the U.S. of 16.6% and 28.8%, respectively (Kessler et al., 2005). The societal and personal costs of these conditions are considerable. In terms of years living with disability in the U.S., these two disorders rank second and fifth, respectively, out of all mental and physical health conditions (US Burden of Disease Collaborators, 2013). Consistent with these findings, depression and anxiety are also the top two mental health conditions in terms of personal health care expenditures, with \$71.1 billion spent annually in the U.S. to treat depression and \$29.7 billion anxiety disorders (Dieleman et al., 2016). Furthermore, the burden of these disorders is increasing (Vos et al., 2016).

---

Corresponding author. Richard T. Liu, Department of Psychiatry and Human Behavior, Alpert Medical School of Brown University, 1011 Veterans Memorial Parkway, East Providence, RI 02915 (rtliupsych@gmail.com).

**Publisher's Disclaimer:** This is a PDF file of an unedited manuscript that has been accepted for publication. As a service to our customers we are providing this early version of the manuscript. The manuscript will undergo copyediting, typesetting, and review of the resulting proof before it is published in its final citable form. Please note that during the production process errors may be discovered which could affect the content, and all legal disclaimers that apply to the journal pertain.

The development of novel therapeutic modalities is needed to reduce the burden of these conditions. Of several possibilities that have garnered substantial interest of late, prebiotics (i.e., chemical compounds that yield health benefits through their influence on the host gut microbiome) and probiotics (i.e., microorganisms that contribute to the host gut microbial flora when consumed, and thereby produce beneficial effects on health) hold particular appeal, in part, for being potentially free of cognitive side effects and the addictive properties of several currently available treatments for these disorders (Liu, 2017). Although the first study to evaluate the therapeutic efficacy of prebiotics or probiotics on depression or anxiety was conducted over a decade ago, (Marcos et al., 2004) approximately half of all existing studies were published in the last two years alone, reflecting the rapidly growing interest in this area.

Also reflective of this burgeoning interest, there have been several recent systematic reviews of probiotics in this area (Huang et al., 2016; Liu et al., 2018; Ng et al., 2018; Pirbaglou et al., 2016; Reis et al., 2018; Wallace and Milev, 2017), including two meta-analyses of depression (Huang et al., 2016; Ng et al., 2018) and anxiety (Liu et al., 2018; Reis et al., 2018), respectively. Although these prior reviews are important for providing the first syntheses of the empirical literature in this area, they are also characterized by several notable limitations. In particular, the two aforementioned meta-analyses of probiotics and depression each included a very small number of studies ( $ks = 4$  and  $9$  for studies meeting the eligibility criteria of the current review), precluding any analyses of publication bias and moderating effects to account for between-study heterogeneity in effect sizes. These meta-analyses also included a study that combined anxiety and depression as a single outcome in their analyses (Mohammadi et al., 2016) which when considered within the context of the small number of studies included in each review and important etiological distinctions between these outcomes (Clark and Watson, 1991), complicates interpretations regarding the effect of probiotics specifically in relation to depression. Additionally, and perhaps in some measure a function of the number of studies included in each, these meta-analyses yielded contradictory findings, with one finding support for an ameliorative effect of probiotics (Huang et al., 2016) and the other reporting no such effect overall (Ng et al., 2018).

Interpretation of the findings of the recent meta-analyses of probiotics and anxiety is also complicated by certain methodological concerns. In particular, over half of the effects included in one of these meta-analyses (Reis et al., 2018) were based on non-independent samples. The other meta-analysis (Liu et al., 2018) included several studies of outcomes other than anxiety as typically conceptualized (e.g., visceral sensitivity; Lorenzo-Zúñiga et al., 2014), and 42% of studies did not meet the eligibility criteria of the current review. Altogether, these meta-analyses included 7 and 11 trials eligible for inclusion in this review.

Addressing these considerations, we conducted a systematic meta-analytic review of controlled clinical trials evaluating the efficacy of prebiotics and probiotics for treating depression and anxiety. With 28 studies, including 18 with 19 unique effects for probiotics for depression and anxiety, the current review builds substantially upon the aforementioned meta-analyses. Additionally, the current review presents preliminary meta-analyses of prebiotics in relation to depression and anxiety, respectively.

## 2. Method

### 2.1. Search strategy and eligibility criteria

A systematic search of the literature was conducted in Embase, MEDLINE, and PsycINFO to identify studies relevant to the current review. The following search string was applied: (“leaky gut” OR dysbiosis OR metagenom\* OR microbiome\* OR microbiota OR prebiotic\* OR probiotic\* OR “bacterial translocation” OR “colon flora” OR “fecal flora” OR “gut flora” OR “intestinal flora” OR “enteric bacteria” OR “fecal bacteria” OR “gut bacteria” OR “intestinal bacteria” OR “fecal microflora” OR “gut microflora” OR “intestinal microflora” OR “gut microbial” OR bifidobacter\* OR lactobacill\*) AND (depress\* OR “affective disorder” OR “affective illness” OR “mood disorder” OR anxi\* OR internalizing OR “mental health” OR “mental illness” OR “psychiatric disorder” OR “psychiatric illness”). The search results were limited to: (i) English-language publications<sup>1</sup> and (ii) peer-reviewed journals. This was supplemented with a search of the references of all prior systematic reviews of probiotics in relation to mental health as a general construct and depression and anxiety specifically (Huang et al., 2016; Liu et al., 2018; McKean et al., 2017; Ng et al., 2018; Pirbaglou et al., 2016; Reis et al., 2018; Romijn and Rucklidge, 2015; Wallace and Milev, 2017). This search strategy yielded a total of 1,911 articles, of which 1,475 were unique reports. In cases where eligibility could not be ruled out based on the title and abstract, the full text was also examined. Each search result was independently reviewed for eligibility by two of the authors, with discrepancies resolved by the first author.

The study inclusion criteria were: (i) a controlled clinical trial investigating the effects of prebiotics or probiotics on depression or anxiety (i.e., naturalistic studies assessing self-reported consumption of prebiotics or probiotics in relation to depression or anxiety were excluded); (ii) studies conducted with human participants (i.e., preclinical studies with animal models were excluded); (iii) prebiotics and/or probiotics were the only active components of the treatment condition(s); and (iv) depression and anxiety were analyzed separately from each other and other outcomes.

### 2.2. Study quality assessment

The quality of eligible studies was evaluated based on the risk of bias criteria detailed in the *Cochrane Handbook for Systematic Reviews of Interventions* (The Cochrane Collaboration, 2011): (i) condition allocation through random sequence generation (selection bias); (ii) concealment of condition allocation (allocation bias); (iii) blinding of participants and study personnel to condition (performance bias); (iv) blinding of outcome assessment (detection bias); (v) incomplete outcome data (attrition bias); and (vi) selective outcome reporting of results for depression or anxiety (reporting bias).

### 2.3. Data extraction

Six eligible studies (Marcos et al., 2004; Pinto-Sanchez et al., 2017; Reale et al., 2012; Roman et al., 2018; Sanchez et al., 2017; Vaghef-Mehrabany et al., 2014) presented data for

---

<sup>1</sup>To assess the impact of restricting the search string to English-language studies, we conducted our search again with the language restriction removed. None of the new search results warranted full-text search based on their title and abstracts. Therefore, restricting the search parameters to English-language publications did not alter the current findings.

both state and trait anxiety. In these cases, data for state anxiety were selected for use in our analyses, as such data would be more suitable for evaluating the immediate treatment effects of prebiotic or probiotics on anxiety.

To conduct sub-analyses and to assess potential moderators in meta-analyses, data on eight study characteristics were extracted. These included four sample characteristics: (i) sample age group (adolescent or adult); (ii) mean age of sample; (iii) sample type (community or clinical/medical); and (iv) percentage of female participants in the sample. Data for four study design characteristics were extracted: (i) form(s) of prebiotic or probiotic administered in the treatment condition; (ii) method of measuring depression and anxiety (interview/clinician ratings or self-report); (iii) type of controlled clinical trial (i.e., cross-over design or randomized clinical trial with parallel-group design [RCT]); and (iv) duration of prebiotic/probiotic administration.

#### 2.4. Data analysis

Analyses were conducted with Comprehensive Meta-Analysis Version 3.3.070 (Biostat, 2014). Standardized mean difference (Cohen's  $d$ ) was used as the primary index of effect size, and calculated such that negative values indicating lower depression and anxiety, respectively, in the treatment condition compared to the control condition. Heterogeneity across the studies was evaluated using the  $I^2$  statistic, which indicates the percentage of the variance in an effect estimate that is a product of heterogeneity across studies rather than sampling error. Low heterogeneity is indicated by  $I^2$  values of approximately 25%, moderate heterogeneity by  $I^2$  values of 50%, and substantial heterogeneity by  $I^2$  values of 75% (Higgins et al., 2003). In cases where high heterogeneity is observed, random-effects models are more appropriate than fixed-effects models, as the former accounts for this heterogeneity by incorporating both sampling and study-level errors, with the pooled effect size representing the mean of a distribution of true effect sizes instead of a single true effect size. In contrast, fixed-effects models assume that a single true effect size exists across all studies and any variance detected is due strictly to sampling error. It thus estimates only within-study variance. For all analyses, random-effects models were generated to account for heterogeneity across studies resulting from differences in samples, measures, and design.

In cases where significant heterogeneity was observed, moderator analyses were conducted to account for potential sources of this heterogeneity. Each potential moderator was assessed separately, with an estimate of the effect size at each level of the moderator calculated.

To assess for publication bias inflating estimates of pooled effect size, the following indices were calculated: Duval and Tweedie's trim-and-fill analysis (Duval and Tweedie, 2000), and Egger's regression intercept (Egger et al., 1997). Duval and Tweedie's trim-and-fill analysis provides an estimate of the number of missing studies based on asymmetry in a funnel plot of the standard error of each study in a meta-analysis against its effect size, and an effect size estimate and confidence interval, adjusting for these missing studies. This analysis assumes homogeneity of effect sizes, and thus its results need to be interpreted with caution in the presence of significant heterogeneity. Egger's regression intercept estimates potential publication bias using a linear regression approach assessing study effect sizes relative to their standard error.

### 3. Results

Of the 1,475 unique records identified, 1,230 reports were excluded based on their titles and abstracts. An additional 211 articles were excluded based on a detailed full-text review. Whenever it remained unclear after full-text inspection whether two studies reported on overlapping samples, the study authors were contacted to seek clarity on this issue. In one case where multiple studies featured overlapping samples, preference was given to the study that assessed the outcome of interest at the end of the clinical trial rather than prior to its completion. Eight studies (Azpiroz et al., 2017; Colica et al., 2017; Cremon et al., 2017; Kazemi et al., 2019; Messaoudi et al., 2011; Reale et al., 2012; Tillisch et al., 2013; Yang et al., 2016) did not report data required for meta-analysis, but were included after the necessary data were obtained from the study authors and prior meta-analyses (Huang et al., 2016; Reis et al., 2018). A final set of 34 publications satisfied the eligibility criteria for this review (Figure 1 and Table 1), including seven prebiotic (Azpiroz et al., 2017; Kazemi et al., 2019; Sanchez et al., 2017; Schmidt et al., 2015; Silk et al., 2009; Smith, 2005; Smith et al., 2015) and 29 probiotic trials (Akkasheh et al., 2016; Chung et al., 2014; Colica et al., 2017; Cremon et al., 2017; Ghorbani et al., 2018; Kato-Kataoka et al., 2016; Kazemi et al., 2019; Kelly et al., 2017; Kitaoka et al., 2009; Kouchaki et al., 2017; Lyra et al., 2016; Majeed et al., 2018; Marcos et al., 2004; Messaoudi et al., 2011; Nishihira et al., 2014; Östlund-Lagerström et al., 2016; Pinto-Sanchez et al., 2017; Reale et al., 2012; Roman et al., 2018; Romijn et al., 2017; Sanchez et al., 2017; Sashihara et al., 2013; Shinkai et al., 2013; Simrén et al., 2010; Slykerman et al., 2017; Steenbergen et al., 2015; Tillisch et al., 2013; Vaghef-Mehrabany et al., 2014; Yang et al., 2016). Two studies (Ghorbani et al., 2018; Sanchez et al., 2017) featured both prebiotics and a probiotic within the treatment condition, and was included only in meta-analyses of probiotics. Another study (Kazemi et al., 2019) employed a three-arm parallel design, with separate conditions for prebiotics, probiotics, and placebo, and the relevant conditions were included in separate meta-analyses of prebiotics and probiotics. With only two studies featuring interview or clinician-based measures of anxiety (Colica et al., 2017; Yang et al., 2016), method of measuring this outcome was excluded from consideration in moderator analyses. As no study featured an adolescent-only sample, age as a categorical variable was also excluded from moderator analyses.

#### 3.1. Study quality assessment

Several notable patterns emerged in study quality. Specifically, 26.5% of studies had an overall low risk bias (defined as low risk for all criteria, or unclear risk for allocation bias and low risk for all other criteria), and 41.2% had overall high risk bias (defined as high risk on at least one criterion), leaving 32.4% of studies with overall unclear risk bias. Low risk bias for all six criteria was met by 23.5% of studies. Most often, high risk bias occurred due to adoption of per-protocol rather than intent-to-treat analyses (41.2% of studies), unclear risk bias occurred most often for allocation bias (47.1% of studies), and low risk reporting bias was determined for all but one study. See Supplemental Figure 1 for a summary.

#### 3.2. Prebiotic trials for depression and anxiety

The compounds evaluated in the prebiotic trials included Bimuno®-galactooligosaccharide (B-GOS), fructooligosaccharide (FOS), GOS, and short-chain FOS (scFOS), all possessing

bifidogenic properties. One three-arm study (Schmidt et al., 2015) separately evaluated B-GOS and FOS. Length of prebiotic administration across trials ranged from four hours to four weeks. Across five prebiotics trials for depression (Azpiroz et al., 2017; Kazemi et al., 2019; Silk et al., 2009; Smith, 2005; Smith et al., 2015), no difference was observed between prebiotic and control conditions (Figure 2a). Similarly, a significant effect was not observed across four prebiotic trials for anxiety (Figure 2b; Azpiroz et al., 2017; Schmidt et al., 2015; Silk et al., 2009; Smith, 2005). These results remained essentially unchanged in sensitivity analyses limited to studies of FOS and scFOS for depression and anxiety, respectively (Supplemental Table 1).

### 3.3. Probiotic trials for depression and anxiety

With two exceptions focusing exclusively on *Bifidobacterium longum* (Pinto-Sanchez et al., 2017) and *Bacillus coagulans* (Majeed et al., 2018), respectively, all probiotic trials investigated lactobacilli alone or in combination with species from other genera, most often *Bifidobacterium*. Duration of probiotic administration across trials ranged from eight days to 45 weeks.

Across 23 trials with 24 unique effects for probiotics and depression (Akkasheh et al., 2016; Chung et al., 2014; Cremon et al., 2017; Ghorbani et al., 2018; Kato-Kataoka et al., 2016; Kazemi et al., 2019; Kelly et al., 2017; Kouchaki et al., 2017; Lyra et al., 2016; Majeed et al., 2018; Messaoudi et al., 2011; Nishihira et al., 2014; Östlund-Lagerström et al., 2016; Pinto-Sanchez et al., 2017; Roman et al., 2018; Romijn et al., 2017; Sanchez et al., 2017; Sashihara et al., 2013; Shinkai et al., 2013; Simrén et al., 2010; Slykerman et al., 2017; Steenbergen et al., 2015; Tillisch et al., 2013), depression was lower in probiotic than placebo conditions at the end of treatment (Figure 2c). Heterogeneity was moderately high ( $I^2 = 48.2\%$ ,  $p = .01$ ), indicting the appropriateness of moderator analyses. The strength of the observed effect did not change as a function of mean age of each sample ( $b < .01$ ,  $p = .26$ ), the percentage of female participants in each study ( $b < .01$ ,  $p = .13$ ), method of assessing depression ( $p = .49$ ), or duration of probiotic administration ( $b < .01$ ,  $p = .45$ ). When analyses were stratified by this latter variable treated dichotomously, however, a significant treatment effect was found for trials lasting longer than a month ( $d = -.28$  [95% CI =  $-.44 - -.13$ ],  $p < .001$ ), but not for trials of up to one month ( $d = -.10$  [95% CI =  $-.29 - .10$ ],  $p = .33$ ). Additionally, sample type emerged as a significant moderator ( $p < .01$ ), with a larger treatment effect observed for clinical or medical samples ( $d = -.45$  [95% CI =  $-.68 - -.23$ ],  $p < .001$ ) than community ones ( $d = -.09$  [95% CI =  $-.20 - .01$ ],  $p = .09$ ). This moderator effect held in an exploratory follow-up analysis ( $p < .01$ ) directly comparing four trials with major depression ( $d = -.73$  [95% CI =  $-1.02 - -.44$ ],  $p < .001$ ; Akkasheh et al., 2016; Ghorbani et al., 2018; Kazemi et al., 2019; Majeed et al., 2018) with seven trials with psychiatric disorders screened out ( $d < .01$  [95% CI =  $-.20 - .20$ ],  $p = .99$ ; (Chung et al., 2014; Kato-Kataoka et al., 2016; Kelly et al., 2017; Messaoudi et al., 2011; Simrén et al., 2010; Steenbergen et al., 2015; Tillisch et al., 2013). Additional details for this analysis are presented in Supplemental Table 2. In analyses of publication bias, Egger's regression test indicated that there was no significant publication bias (intercept =  $-1.26$ ,  $p = .08$ ), but the adjusted effect size produced with the trim-and-fill method was smaller in absolute value

terms ( $d = -.17$  [95% CI =  $-.31 - -.04$ ]) and the corresponding funnel plot of effect sizes was slightly asymmetrical (Figure 3a).

There were 22 trials with 23 unique effects for probiotics and anxiety (Colica et al., 2017; Cremon et al., 2017; Kato-Kataoka et al., 2016; Kelly et al., 2017; Kitaoka et al., 2009; Lyra et al., 2016; Marcos et al., 2004; Messaoudi et al., 2011; Östlund-Lagerström et al., 2016; Pinto-Sanchez et al., 2017; Reale et al., 2012; Roman et al., 2018; Romijn et al., 2017; Sanchez et al., 2017; Sashihara et al., 2013; Shinkai et al., 2013; Simrén et al., 2010; Slykerman et al., 2017; Steenbergen et al., 2015; Tillisch et al., 2013; Vaghef-Mehrabany et al., 2014; Yang et al., 2016). An outlier (Yang et al., 2016) was identified and excluded from all analyses. Probiotic administration was associated with lower anxiety relative to placebo at the end of treatment (Figure 2d). As significant heterogeneity was not observed ( $I^2 = 5.0\%$ ,  $p = .39$ ), moderator analyses were not conducted. Evidence of publication bias was modest. Specifically, the result of Egger's regression test was not significant (intercept =  $.37$ ,  $p = .49$ ), and the pooled effect size produced with the trim-and-fill method adjusting for imputed missing significant effects remained largely unchanged (adjusted  $d = -.11$  [95% CI =  $-.20 - -.01$ ]). The funnel plot of effect sizes was essentially symmetrical, with two imputed effects favoring treatment (Figure 3b).

For both depression and anxiety, a series of sensitivity analyses was conducted (Supplemental Table 3). In analyses excluding (i) two cross-over trials (Cremon et al., 2017; Kelly et al., 2017; i.e., restricting analyses to RCTs with parallel-group design), (ii) the aforementioned trial featuring both prebiotics and a probiotic within the treatment condition (Ghorbani et al., 2018; Sanchez et al., 2017), and (iii) these cross-over trials and trials combining prebiotics and probiotics, the results remained largely unchanged. When analyses were restricted to *Lactobacillus*-only trials, the pooled effect was no longer significant for depression and anxiety. When the pooled effect size for *Lactobacillus*-only trials for depression was compared to that for the remaining probiotic trials for depression, a significant difference emerged ( $p < .01$ ), the effect of probiotics on depression being larger for trials involving *Lactobacillus* combined with other genera or prebiotics and other genera considered alone. No difference was observed between pooled effect sizes for *Lactobacillus*-only trials for anxiety and other probiotic trials for this condition ( $p = .66$ ).

#### 4. Discussion

The current review provided the most comprehensive meta-analysis to date of the effects of probiotics on depression and anxiety. We also conducted the first quantitative syntheses of data on prebiotics for depression and anxiety. Although the current review did not find an ameliorative effect for prebiotics on depression or anxiety, respectively, these findings should be regarded as preliminary, given the relatively small number of eligible studies included in the analyses. We did find general support, however, for an effect of probiotics on depression and anxiety, with small pooled effects in both cases. Although *Lactobacillus* received the most interest among probiotic trials, when considered alone, it did not have an effect on depression, with a significant difference in effect size existing between *Lactobacillus*-only trials and others. *Lactobacillus* did not appear to have an effect on

anxiety, regardless of whether considered alone or in combination with prebiotics or other probiotics.

Several considerations should be taken, however, in interpreting the observed effect sizes and the potential implications of these findings. First, and perhaps most important, is the dearth of trials featuring samples with clinical depression and anxiety. Indeed, only four trials included samples with major depression (Akkasheh et al., 2016; Ghorbani et al., 2018; Kazemi et al., 2019; Majeed et al., 2018) and none clinically significant anxiety. Moreover two prebiotic trials (Azpiroz et al., 2017; Schmidt et al., 2015) and nine probiotic trials (Chung et al., 2014; Kato-Kataoka et al., 2016; Kelly et al., 2017; Kitaoka et al., 2009; Messaoudi et al., 2011; Simrén et al., 2010; Steenbergen et al., 2015; Tillisch et al., 2013; Yang et al., 2016) specifically excluded individuals with these disorders or psychiatric conditions more generally, and most of the remaining trials featured community samples within which naturally low levels of depression and anxiety would be reasonably expected. Such trials, in which there is little room for reduction in depressive and anxiety symptoms regardless of clinical intervention, are limited in their ability to inform our understanding of the antidepressant and anxiolytic potential of prebiotics and probiotics. The high prevalence of these trials in the literature likely introduced a bias toward smaller pooled effects across analyses and such findings should therefore be interpreted with a degree of caution. For example, given that seven of the nine *Lactobacillus*-only trials for depression drew on healthy community samples, it may be premature to conclude that *Lactobacillus* has no clinically meaningful antidepressant properties based on the finding that *Lactobacillus*-only trials had a small, non-significant pooled effect, in contrast to the significantly larger effects for other probiotic trials for depression. Supporting this consideration regarding sample type, in moderator analyses for probiotic trials and depression, the pooled effect was essentially zero for trials with psychiatric disorders as an exclusion criterion, and in contrast, medium-to-large for trials with major depression among the inclusion criteria. Indeed, these trials with clinically depressed samples accounted for four of the six largest effects among studies of probiotics and depression. These findings are also consistent with those of an earlier meta-analysis of probiotics and depression (Ng et al., 2018), which did not test for moderator effects, but stratified studies by depressive symptom severity at enrollment and found a significant effect for studies of individuals with mild-to-moderate depressive symptoms but not for studies of healthy individuals.

It is also important to note that despite the considerable interest in the microbiome in relation to depression and anxiety, and particularly the potential for prebiotics and probiotics to treat these disorders, there is a paucity of significant findings at the level of individual studies, even in cases of significant pooled effects. In fact, just six probiotic trials for depression (Akkasheh et al., 2016; Ghorbani et al., 2018; Kazemi et al., 2019; Kouchaki et al., 2017; Majeed et al., 2018; Sanchez et al., 2017) and one for anxiety (Slykerman et al., 2017) yielded significant findings. This may in some measure be accounted for by the aforementioned predominance of trials featuring healthy community samples or samples with psychiatric disorders screened out. A complementary explanation is that the majority of studies were underpowered to detect significant effects, the median sample size of included studies being 46.5.



Several studies featured samples with chronic medical conditions, most often irritable bowel syndrome. The presence of these studies in the current review is not inconsequential, accounting for 35.3% of all trials. Although selecting for these conditions provides a greater likelihood of psychiatrically enriched samples, given meta-analytic evidence of their comorbidity with depression and anxiety (Dawes et al., 2016; Dickens et al., 2002; Fond et al., 2014; Luppino et al., 2010), it also potentially complicates interpretation of resulting findings, as these medical conditions, and treatment of them, often lead to corresponding changes in mood and anxiety (Fabricatore et al., 2011; Luppino et al., 2010). Caution should be taken in generalizing findings based on these samples, as it is unclear to what degree observed improvements in depression and anxiety are secondary to alleviation of the medical condition being treated with prebiotics or probiotics and to what degree comparable improvements in depression and anxiety would be observed in the absence of medical illness.

The current findings should also be interpreted within the context of prior meta-analyses in this area. In particular, our findings are consistent with those of an earlier meta-analysis that reported a significant probiotic effect on depression (Huang et al., 2016) but not another which failed to find a significant effect (Ng et al., 2018). One possible explanation for this pattern of findings is that the former meta-analysis and the current review featured higher proportions of clinically depressed individuals (8.3% and 8.0%, respectively) than did the meta-analysis with a non-significant effect (3.6%). A unique aspect of the current meta-analysis is its inclusion of a sufficient number of trials for moderator analyses. That a significantly larger pooled effect was found in the current review for studies featuring clinically depressed samples is congruent with this possibility that sample type may in part account for whether a significant pooled effect is found. Furthermore, that the current meta-analysis includes a substantially greater number of trials than did prior ones lends weight to our findings.

Also worth noting is that a significant pooled effect for probiotics and anxiety was found in the current review, but not in two recent ones (Liu et al., 2018; Reis et al., 2018). There are several reasons why the findings of the current meta-analysis may be accorded greater weight. In addition to addressing the previously mentioned methodological limitations pertaining to the prior meta-analyses, the current review includes a notably higher number of studies, which provides greater statistical power to detect a significant small effect, as was found in the current case. Additionally, significant heterogeneity was observed in one of the prior meta-analyses of anxiety (Liu et al., 2018), but not in the other (Reis et al., 2018), after removing an outlier, or the current review. This discrepancy between meta-analyses may, in part, be a function of the aforementioned adoption of a notably broad operationalization of anxiety (e.g., the inclusion of visceral sensitivity as an outcome) in the meta-analysis that detected significant heterogeneity.

Several limitations warrant mention. The study-level effects included in the current review were based on measures of depression and anxiety taken upon completion of prebiotic/probiotic regimens. We therefore could not evaluate to what extent potential psychotropic effects of these regimens persist after cessation of treatment. Additionally, none of the trials included adolescent samples, and thus potential differences in efficacy related to

development could not be assessed. This is an important consideration, given (i) differences in microbiome composition across the lifespan (i.e., although the gut microbiome converges toward an adult-like profile in early childhood, microbial diversity increases throughout development and into adulthood [Rea et al., 2016; Yatsunenko et al., 2012] and greater inter-individual variation exists among youth than adults [Biagi et al., 2010; Claesson et al., 2012; Yatsunenko et al., 2012]), and (ii) significant age-of-onset differences in course and treatment response for depression and anxiety (Hill et al., 2004; Jaffee et al., 2002; Kaufman et al., 2001; Serretti et al., 2009; Van Ameringen et al., 2004). Addressing these limitations are important avenues for future research. Finally, the prebiotic findings are preliminary, given the relatively few studies included in the analyses, and require replication with a larger number of clinical trials.

In summary, the current evidence base for prebiotics and probiotics in the treatment of internalizing disorders appears modest. Support for the efficacy of probiotics for depression and anxiety was observed, but with generally small pooled effects. These findings are qualified, however, by the relative rarity of trials with psychiatric samples and the prevalence of non-clinical samples in the literature, which together significantly reduced the observed effects. In general, the largest effects were found for probiotics and major depression, but this should be regarded as preliminary, being limited to four trials. Future studies with clinically significant presentations are indicated and necessary adequately to evaluate the potential efficacy of prebiotics and probiotics for depression and anxiety. This is especially important given the increasing need for the development of novel psychopharmacological agents for these conditions (Hyman, 2012; Insel, 2015; Miller, 2010).

## Supplementary Material

Refer to Web version on PubMed Central for supplementary material.

## Acknowledgements

Preparation of this manuscript was supported in part by the National Institute of Mental Health of the National Institutes of Health under Award Number R01MH101138, R01MH115905, and R21MH112055, and the Brown Institute for Brain Science/Norman Prince Neurosciences Institute. The content is solely the responsibility of the authors and does not necessarily represent the official views of the funding agencies.

## References

- Akkasheh G, Kashani-Poor Z, Tajabadi-Ebrahimi M, Jafari P, Akbari H, Taghizadeh M, Memarzadeh MR, Asemi Z, Esmailzadeh A, 2016 Clinical and metabolic response to probiotic administration in patients with major depressive disorder: A randomized, double-blind, placebo-controlled trial. *Nutrition* 32, 315–320. 10.1016/j.nut.2015.09.003 [PubMed: 26706022]
- Azpiroz F, Dubray C, Bernalier-Donadille A, Cardot J-M, Accarino A, Serra J, Wagner A, Respondek F, Dapoigny M, 2017 Effects of scFOS on the composition of fecal microbiota and anxiety in patients with irritable bowel syndrome: A randomized, double blind, placebo controlled study. *Neurogastroenterol. Motil* 29, e12911 10.1111/nmo.12911
- Biagi E, Nylund L, Candela M, Ostan R, Bucci L, Pini E, Nikkila J, Monti D, Satokari R, Franceschi C, Brigidi P, De Vos W, 2010 Through ageing, and beyond: Gut microbiota and inflammatory status in seniors and centenarians. *PLoS One* 5, e10667 10.1371/journal.pone.0010667 [PubMed: 20498852]
- Biostat, 2014 Comprehensive Meta-Analysis Version 3.

- Chung YC, Jin HM, Cui Y, Kim DS, Jung JM, Park J II, Jung ES, Choi EK, Chae SW, 2014 Fermented milk of *Lactobacillus helveticus* IDCC3801 improves cognitive functioning during cognitive fatigue tests in healthy older adults. *J. Funct. Foods* 10, 465–474. 10.1016/j.jff.2014.07.007
- Claesson MJ, Jeffery IB, Conde S, Power SE, O'Connor EM, Cusack S, Harris HMB, Coakley M, Lakshminarayanan B, O'Sullivan O, Fitzgerald GF, Deane J, O'Connor M, Harnedy N, O'Connor K, O'Mahony D, van Sinderen D, Wallace M, Brennan L, Stanton C, Marchesi JR, Fitzgerald AP, Shanahan F, Hill C, Ross RP, O'Toole PW, 2012 Gut microbiota composition correlates with diet and health in the elderly. *Nature* 488, 178–184. 10.1038/nature11319 [PubMed: 22797518]
- Clark LA, Watson D, 1991 Tripartite model of anxiety and depression: Psychometric evidence and taxonomic implications. *J. Abnorm. Psychol* 100, 316–336. 10.1037/0021-843X.100.3.316 [PubMed: 1918611]
- Colica C, Avolio E, Bollero P, Costa De Miranda R, Ferraro S, Sinibaldi Salimei P, De Lorenzo A, Di Renzo L, 2017 Evidences of a new psychobiotic formulation on body composition and anxiety. *Mediators Inflamm.* 2017. 10.1155/2017/5650627
- Cremon C, Guglielmetti S, Gargari G, Taverniti V, Castellazzi AM, Valsecchi C, Tagliacarne C, Fiore W, Bellini M, Bertani L, Gambaccini D, Cicala M, Germanà B, Vecchi M, Pagano I, Barbaro MR, Bellacosa L, Stanghellini V, Barbara G, 2017 Effect of *Lactobacillus paracasei* CNCM I-1572 on symptoms, gut microbiota, short chain fatty acids, and immune activation in patients with irritable bowel syndrome: A pilot randomized clinical trial. *United Eur. Gastroenterol. J* 6, 604–613. 10.1177/2050640617736478
- Dawes AJ, Maggard-Gibbons M, Maher AR, Booth MJ, Miake-Lye I, Beroes JM, Shekelle PG, 2016 Mental health conditions among patients seeking and undergoing bariatric surgery: A meta-analysis. *JAMA* 315, 150–63. 10.1001/jama.2015.18118 [PubMed: 26757464]
- Dickens C, McGowan L, Clark-Carter D, Creed F, 2002 Depression in rheumatoid arthritis: A systematic review of the literature with meta-analysis. *Psychosom. Med* 64, 52–60. <https://doi.org/0033-3174/02/6401-0052> [PubMed: 11818586]
- Dieleman JL, Baral R, Birger M, Bui AL, Bulchis A, Chapin A, Hamavid H, Horst C, Johnson EK, Joseph J, Lavado R, Lomsadze L, Reynolds A, Squires E, Campbell M, DeCenso B, Dicker D, Flaxman AD, Gabert R, Highfill T, Naghavi M, Nightingale N, Templin T, Tobias MI, Vos T, Murray CJL, 2016 US spending on personal health care and public health, 1996–2013. *JAMA* 316, 2627–2646. 10.1001/jama.2016.16885 [PubMed: 28027366]
- Duval S, Tweedie R, 2000 Trim and fill: A simple funnel-plot-based method of testing and adjusting for publication bias in meta-analysis. *Biometrics* 56, 455–463. [PubMed: 10877304]
- Egger M, Davey Smith G, Schneider M, Minder C, 1997 Bias in meta-analysis detected by a simple, graphical test. *BMJ* 315, 629–634. [PubMed: 9310563]
- Fabricatore AN, Wadden TA, Higginbotham AJ, Faulconbridge LF, Nguyen AM, Heymsfield SB, Faith MS, 2011 Intentional weight loss and changes in symptoms of depression: A systematic review and meta-analysis. *Int. J. Obes* 10.1038/ijo.2011.2
- Fond G, Loundou A, Hamdani N, Boukouaci W, Dargel A, Oliveira J, Roger M, Tamouza R, Leboyer M, Boyer L, 2014 Anxiety and depression comorbidities in irritable bowel syndrome (IBS): a systematic review and meta-analysis. *Eur. Arch. Psychiatry Clin. Neurosci* 264, 651–660. 10.1007/s00406-014-0502-z [PubMed: 24705634]
- Ghorbani Z, Nazari S, Etesam F, Nourimajd S, Ahmadpanah M, Jahromi SR, 2018 The effect of synbiotic as an adjuvant therapy to fluoxetine in moderate depression: A randomized multicenter trial. *Arch. Neurosci.* 5, e60507 10.5812/archneurosci.60507.Research
- Higgins JPT, Thompson SG, Deeks JJ, Altman DG, 2003 Measuring inconsistency in meta-analyses. *BMJ* 327, 557–560. [PubMed: 12958120]
- Hill J, Pickles A, Rollinson L, Davies R, Byatt M, 2004 Juvenile- versus adult-onset depression: Multiple differences imply different pathways. *Psychol. Med.* 34, 1483–1493. 10.1017/S0033291704002843 [PubMed: 15724879]
- Huang R, Wang K, Hu J, 2016 Effect of probiotics on depression: A systematic review and meta-analysis of randomized controlled trials. *Nutrients* 8 10.3390/nu8080483
- Hyman SE, 2012 Revolution stalled. *Sci. Transl. Med* 4, 155cm11–155cm11. 10.1126/scitranslmed.3003142

- Insel TR, 2015 The NIMH experimental medicine initiative. *World Psychiatry* 14, 151–153. 10.1002/wps.20227 [PubMed: 26043323]
- Jaffee SR, Moffitt TE, Caspi A, Fombonne E, Poulton R, Martin J, 2002 Differences in early childhood risk factors for juvenile-onset and adult-onset depression. *Arch. Gen. Psychiatry* 59, 215–222. 10.1001/archpsyc.59.3.215 [PubMed: 11879158]
- Kato-Kataoka A, Nishida K, Takada M, Suda K, Kawai M, Shimizu K, Kushiro A, Hoshi R, Watanabe O, Igarashi T, Miyazaki K, Kuwano Y, Rokutan K, 2016 Fermented milk containing *Lactobacillus casei* strain Shirota prevents the onset of physical symptoms in medical students under academic examination stress. *Benef. Microbes* 7, 153–156. 10.3920/BM2015.0100 [PubMed: 26689231]
- Kaufman J, Martin A, King RA, Charney D, 2001 Are child-, adolescent-, and adult-onset depression one and the same disorder? *Biol. Psychiatry* 49, 980–1001. 10.1016/S0006-3223(01)01127-1 [PubMed: 11430841]
- Kazemi A, Noorbala AA, Azam K, Eskandari MH, Djafarian K, 2019 Effect of probiotic and prebiotic vs placebo on psychological outcomes in patients with major depressive disorder: a randomized clinical trial. *Clin. Nutr.* 38 (2), 522–528. 10.1016/j.clnu.2018.04.010 [PubMed: 29731182]
- Kelly JR, Allen AP, Temko A, Hutch W, Kennedy PJ, Farid N, Murphy E, Boylan G, Bienenstock J, Cryan JF, Clarke G, Dinan TG, 2017 Lost in translation? The potential psychobiotic *Lactobacillus rhamnosus* (JB-1) fails to modulate stress or cognitive performance in healthy male subjects. *Brain. Behav. Immun.* 61, 50–59. 10.1016/j.bbi.2016.11.018 [PubMed: 27865949]
- Kessler RC, Berglund P, Demler O, Jin R, Merikangas KR, Walters EE, 2005 Lifetime prevalence and age-of-onset distributions of DSM-IV disorders in the National Comorbidity Survey Replication. *Arch. Gen. Psychiatry* 62, 593–602. 10.1001/archpsyc.62.6.593 [PubMed: 15939837]
- Kitaoka K, Uchida K, Okamoto N, Chikahisa S, Miyazaki T, Takeda E, Séi H, 2009 Fermented ginseng improves the first-night effect in humans. *Sleep* 32, 413–421. 10.1093/sleep/32.3.413 [PubMed: 19294962]
- Kouchaki E, Tamtaji OR, Salami M, Bahmani F, Daneshvar Kakhaki R, Akbari E, Tajabadi-Ebrahimi M, Jafari P, Asemi Z, 2017 Clinical and metabolic response to probiotic supplementation in patients with multiple sclerosis: A randomized, double-blind, placebo-controlled trial. *Clin. Nutr.* 36, 1245–1249. 10.1016/j.clnu.2016.08.015 [PubMed: 27669638]
- Liu B, He Y, Wang M, Liu J, Ju Y, Zhang Y, Liu T, Li L, Li Q, 2018 Efficacy of probiotics on anxiety—A meta-analysis of randomized controlled trials. *Depress. Anxiety* 35, 935–945. 10.1002/da.22811 [PubMed: 29995348]
- Liu RT, 2017 The microbiome as a novel paradigm in studying stress and mental health. *Am. Psychol.* 72, 655–667. 10.1037/amp0000058 [PubMed: 29016169]
- Lorenzo-Zúñiga V, Llop E, Suárez C, Álvarez B, Abreu L, Espadaler J, Serra J, 2014 I.31, a new combination of probiotics, improves irritable bowel syndrome-related quality of life. *World J. Gastroenterol.* 20, 8709–8716. 10.3748/wjg.v20.i26.8709 [PubMed: 25024629]
- Luppino FS, De Wit LM, Bouvy PF, Stijnen T, Cuijpers P, Penninx BWJH, Zitman FG, 2010 Overweight, obesity, and depression: A systematic review and meta-analysis of longitudinal studies. *Arch. Gen. Psychiatry*. 10.1001/archgenpsychiatry.2010.2
- Lyra A, Hillilä M, Huttunen T, Männikkö S, Taalikka M, Tennilä J, Tarpila A, Lahtinen S, Ouwehand AC, Veijola L, 2016 Irritable bowel syndrome symptom severity improves equally with probiotic and placebo. *World J. Gastroenterol.* 22, 10631–10642. 10.3748/wjg.v22.i48.10631 [PubMed: 28082816]
- Majeed M, Nagabhushanam K, Natarajan S, Sivakumar A, Ali F, Pande A, Majeed S, Karri SK, 2018 *Bacillus coagulans* MTCC 5856 supplementation in the management of diarrhea predominant Irritable Bowel Syndrome: A double blind randomized placebo controlled pilot clinical study. *Nutr. J.* 62, 1218 10.1186/s12937-016-0140-6
- Marcos A, Wärnberg J, Nova E, Gómez S, Alvarez A, Alvarez R, Mateos JA, Cobo JM, 2004 The effect of milk fermented by yogurt cultures plus *Lactobacillus casei* DN-114001 on the immune response of subjects under academic examination stress. *Eur. J. Nutr.* 43, 381–389. 10.1007/s00394-004-0517-8 [PubMed: 15309418]

- McKean J, Naug H, Nikbakht E, Amiet B, Colson N, 2017 Probiotics and subclinical psychological symptoms in healthy participants: A systematic review and meta-analysis. *J. Altern. Complement. Med.* 23, 249–258. 10.1089/acm.2016.0023 [PubMed: 27841940]
- Messaoudi M, Lalonde R, Violle N, Javelot H, Desor D, Nejd A, Bisson J-F, Rougeot C, Pichelin M, Cazaubiel M, Cazaubiel J-M, 2011 Assessment of psychotropic-like properties of a probiotic formulation (*Lactobacillus helveticus* R0052 and *Bifidobacterium longum* R0175) in rats and human subjects. *Br. J. Nutr* 105, 755–764. 10.1017/S0007114510004319 [PubMed: 20974015]
- Miller G, 2010 Is pharma running out of brainy ideas? *Science* (80-. ). 329, 502–504. 10.1126/science.329.5991.502
- Mohammadi AA, Jazayeri S, Khosravi-Darani K, Solati Z, Mohammadpour N, Asemi Z, Adab Z, Djalali M, Tehrani-Doost M, Hosseini M, Eghtesadi S, 2016 The effects of probiotics on mental health and hypothalamic-pituitary-adrenal axis: A randomized, double-blind, placebo-controlled trial in petrochemical workers. *Nutr. Neurosci.* 19, 387–395. 10.1179/1476830515Y.0000000023 [PubMed: 25879690]
- Ng QX, Peters C, Ho CYX, Lim DY, Yeo WS, 2018 A meta-analysis of the use of probiotics to alleviate depressive symptoms. *J. Affect. Disord* 228, 13–19. 10.1016/j.jad.2017.11.063 [PubMed: 29197739]
- Nishihira J, Kagami-Katsuyama H, Tanaka A, Nishimura M, Kobayashi T, Kawasaki Y, 2014 Elevation of natural killer cell activity and alleviation of mental stress by the consumption of yogurt containing *Lactobacillus gasseri* SBT2055 and *Bifidobacterium longum* SBT2928 in a double-blind, placebo-controlled clinical trial. *J. Funct. Foods* 11, 261–268. 10.1016/j.jff.2014.09.002
- Östlund-Lagerström L, Kihlgren A, Repsilber D, Björkstén B, Brummer RJ, Schoultz I, 2016 Probiotic administration among free-living older adults: A double blinded, randomized, placebo-controlled clinical trial. *Nutr. J* 15, 1–10. 10.1186/s12937-016-0198-1 [PubMed: 26728196]
- Pinto-Sanchez MI, Hall GB, Ghajar K, Nardelli A, Bolino C, Lau JT, Martin FP, Cominetti O, Welsh C, Rieder A, Traynor J, Gregory C, De Palma G, Pigrau M, Ford AC, Macri J, Berger B, Bergonzelli G, Surette MG, Collins SM, Moayyedi P, Bercik P, 2017 Probiotic *Bifidobacterium longum* NCC3001 reduces depression scores and alters brain activity: A pilot study in patients with irritable bowel syndrome. *Gastroenterology* 153, 448–459.e8. 10.1053/j.gastro.2017.05.003 [PubMed: 28483500]
- Pirbaglou M, Katz J, de Souza RJ, Stearns JC, Motamed M, Ritvo P, 2016 Probiotic supplementation can positively affect anxiety and depressive symptoms: a systematic review of randomized controlled trials. *Nutr. Res* 36, 889–898. 10.1016/j.nutres.2016.06.009 [PubMed: 27632908]
- Rea K, Dinan TG, Cryan JF, 2016 The microbiome: A key regulator of stress and neuroinflammation. *Neurobiol. Stress* 4, 23–33. 10.1016/j.ynstr.2016.03.001 [PubMed: 27981187]
- Reale M, Boscolo P, Bellante V, Tarantelli C, Di Nicola M, Forcella L, Li Q, Morimoto K, Muraro R, 2012 Daily intake of *Lactobacillus casei* Shirota increases natural killer cell activity in smokers. *Br. J. Nutr* 108, 308–314. 10.1017/S0007114511005630 [PubMed: 22142891]
- Reis DJ, Iardi SS, Punt SEW, 2018 The anxiolytic effect of probiotics: A systematic review and meta-analysis of the clinical and preclinical literature. *PLoS One* 13, e0199041 10.1371/journal.pone.0199041 [PubMed: 29924822]
- Roman P, Estévez AF, Miras A, Sánchez-labraca N, Cañadas F, Vivas AB, Cardona D, 2018 A pilot randomized controlled trial to explore cognitive and emotional effects of probiotics in fibromyalgia. *Sci. Rep* 8, 10965 10.1038/s41598-018-29388-5 [PubMed: 30026567]
- Romijn AR, Rucklidge JJ, 2015 Systematic review of evidence to support the theory of psychobiotics. *Nutr. Rev* 73, 675–693. 10.1093/nutrit/nuv025 [PubMed: 26370263]
- Romijn AR, Rucklidge JJ, Kuijer RG, Frampton C, 2017 A double-blind, randomized, placebo-controlled trial of *Lactobacillus helveticus* and *Bifidobacterium longum* for the symptoms of depression. *Aust. N. Z. J. Psychiatry* 51, 810–821. 10.1177/0004867416686694 [PubMed: 28068788]
- Sanchez M, Darimont C, Panahi S, Drapeau V, Marette A, Taylor VH, Doré J, Tremblay A, 2017 Effects of a diet-based weight-reducing program with probiotic supplementation on satiety efficiency, eating behaviour traits, and psychosocial behaviours in obese individuals. *Nutrients* 9, 1–17. 10.3390/nu9030284

- Sashihara T, Nagata M, Mori T, Ikegami S, Gotoh M, Okubo K, Uchida M, Itoh H, 2013 Effects of *Lactobacillus gasseri* OLL2809 and alpha-lactalbumin on university-student athletes: a randomized, double-blind, placebo-controlled clinical trial. *Appl. Physiol. Nutr. Metab* 1235, 1228–1235.
- Schmidt K, Cowen PJ, Harmer CJ, Tzortzis G, Errington S, Burnet PWJ, 2015 Prebiotic intake reduces the waking cortisol response and alters emotional bias in healthy volunteers. *Psychopharmacology (Berl)*. 232, 1793–1801. 10.1007/s00213-014-3810-0 [PubMed: 25449699]
- Serretti A, Chiesa A, Calati R, Perna G, Bellodi L, De Ronchi D, 2009 Common genetic, clinical, demographic and psychosocial predictors of response to pharmacotherapy in mood and anxiety disorders. *Int. Clin. Psychopharmacol* 24, 1–18. 10.1097/YIC.0b013e32831db2d7 [PubMed: 19060722]
- Shinkai S, Toba M, Saito T, Sato I, Tsubouchi M, Taira K, Kakumoto K, Inamatsu T, Yoshida H, Fujiwara Y, Fukaya T, Matsumoto T, Tateda K, Yamaguchi K, Kohda N, Kohno S, 2013 Immunoprotective effects of oral intake of heat-killed *Lactobacillus pentosus* strain b240 in elderly adults: A randomised, double-blind, placebo-controlled trial. *Br. J. Nutr* 109, 1856–1865. 10.1017/S0007114512003753 [PubMed: 22947249]
- Silk DBA, Davis A, Vulevic J, Tzortzis G, Gibson GR, 2009 Clinical trial: The effects of a trans-galactooligosaccharide prebiotic on faecal microbiota and symptoms in irritable bowel syndrome. *Aliment. Pharmacol. Ther* 29, 508–518. 10.1111/j.1365-2036.2008.03911.x [PubMed: 19053980]
- Simrén M, Öhman L, Olsson J, Svensson U, Ohlson K, Posserud I, Strid H, 2010 Clinical trial: The effects of a fermented milk containing three probiotic bacteria in patients with irritable bowel syndrome - A randomized, double-blind, controlled study. *Aliment. Pharmacol. Ther* 31, 218–227. 10.1111/j.1365-2036.2009.04183.x [PubMed: 19863495]
- Slykerman RF, Hood F, Wickens K, Thompson JMD, Barthow C, Murphy R, Kang J, Rowden J, Stone P, Crane J, Stanley T, Abels P, Purdie G, Maude R, Mitchell EA, 2017 Effect of *Lactobacillus rhamnosus* HN001 in Pregnancy on Postpartum Symptoms of Depression and Anxiety: A Randomised Double-blind Placebo-controlled Trial. *EBioMedicine* 24, 159–165. 10.1016/j.ebiom.2017.09.013 [PubMed: 28943228]
- Smith AP, 2005 The concept of well-being: Relevance to nutrition research. *Br. J. Nutr* 93, 1–5. 10.1186/ar1506 [PubMed: 15705217]
- Smith AP, Sutherl D, Hewlett P, 2015 An investigation of the acute effects of oligofructose-enriched inulin on subjective wellbeing, mood and cognitive performance. *Nutrients* 7, 8887–8896. 10.3390/nu7115441 [PubMed: 26516908]
- Steenbergen L, Sellaro R, van Hemert S, Bosch JA, Colzato LS, 2015 A randomized controlled trial to test the effect of multispecies probiotics on cognitive reactivity to sad mood. *Brain. Behav. Immun* 48, 258–264. 10.1016/j.bbi.2015.04.003 [PubMed: 25862297]
- The Cochrane Collaboration, 2011 *Cochrane Handbook for Systematic Reviews of Interventions*. John Wiley & Sons, Chichester, England.
- Tillisch K, Labus J, Kilpatrick L, Jiang Z, Stains J, Ebrat B, Guyonnet D, Legrain-Raspaud S, Trotin B, Naliboff B, Mayer EA, 2013 Consumption of fermented milk product with probiotic modulates brain activity. *Gastroenterology* 144, 1394–1401. 10.1053/j.gastro.2013.02.043 [PubMed: 23474283]
- US Burden of Disease Collaborators, 2013 The state of US health, 1990–2010: Burden of diseases, injuries, and risk factors. *JAMA* 310, 591–608. 10.1001/jama.2013.13805 [PubMed: 23842577]
- Vaghef-Mehrabany E, Alipour B, Homayouni-Rad A, Sharif SK, AsghariJafarabadi M, Zavvari S, 2014 Probiotic supplementation improves inflammatory status in patients with rheumatoid arthritis. *Nutrition* 30, 430–435. 10.1016/j.nut.2013.09.007 [PubMed: 24355439]
- Van Ameringen M, Oakman J, Mancini C, Pipe B, Chung H, 2004 Predictors of response in generalized social phobia: Effect of age of onset. *J. Clin. Psychopharmacol* 24, 42–48. 10.1097/01.jcp.0000104909.75206.6f [PubMed: 14709946]
- Vos T, Allen C, Arora M, Barber RM, Bhutta ZA, Brown A, Carter A, Casey DC, Charlson FJ, Chen AZ, Coggeshall M, Cornaby L, Dandona L, Dicker DJ, Dilegge T, Erskine HE, Ferrari AJ, Fitzmaurice C, Fleming T, Forouzanfar MH, Fullman N, Gething PW, Goldberg EM, Graetz N, Haagsma JA, Johnson CO, Kassebaum NJ, Kawashima T, Kemmer L, Khalil A, Kinfu Y, Kyu HH, Leung J, Liang X, Lim SS, Lopez AD, Lozano R, Marczak L, Mensah GA, Mokdad AH, Naghavi

M, Nguyen G, Nsoesie E, Olsen H, Pigott DM, Pinho C, Rankin Z, Reinig N, Salomon JA, Sandar L, Smith A, Stanaway J, Steiner C, Teeple S, Thomas BA, Troeger C, Wagner A, Wang H, Wanga V, Whiteford HA, Zockler L, Abajobir AA, Abate KH, Abbafati C, Abbas KM, Abd-Allah F, Abraham B, Abubakar I, Abu-Raddad LJ, Abu-Rmeileh NME, Ackerman IN, Adebisi AO, Ademi Z, Adou AK, Afanvi KA, Agardh EE, Agarwal A, Kiadaliri AA, Ahmadieh H, Ajala ON, Akinyemi RO, Akseer N, Al-Aly Z, Alam K, Alam NKM, Aldhahri SF, Alegretti MA, Alemu ZA, Alexander LT, Alhabib S, Ali R, Alkerwi A, Alla F, Allebeck P, Al-Raddadi R, Alsharif U, Altirkawi KA, Alvis-Guzman N, Amare AT, Amberbir A, Amini H, Ammar W, Amrock SM, Andersen HH, Anderson GM, Anderson BO, Antonio CAT, Aregay AF, Ärnlöv J, Artaman A, Asayesh H, Assadi R, Atique S, Avokpaho EFGA, Awasthi A, Quintanilla BPA, Azzopardi P, Bacha U, Badawi A, Balakrishnan K, Banerjee A, Barac A, Barker-Collo SL, B?rnighausen T, Barregard L, Barrero LH, Basu A, Bazargan-Hejazi S, Bell B, Bell ML, Bennett DA, Bensenor IM, Benzian H, Berhane A, Bernab?? E, Betsu BD, Beyene AS, Bhala N, Bhatt S, Biadgilign S, Bienhoff K, Bikbov B, Biryukov S, Bisanzio D, Bjertness E, Blore J, Borschmann R, Boufous S, Brainin M, Brazinova A, Breitborde NJK, Brown J, Buchbinder R, Buckle GC, Butt ZA, Calabria B, Campos-Nonato IR, Campuzano JC, Carabin H, C??rdenas R, Carpenter DO, Carrero JJ, Casta??eda-Orjuela CA, Rivas JC, Catal??-L??pez F, Chang JC, Chiang PPC, Chibueze CE, Chisumpa VH, Choi JYJ, Chowdhury R, Christensen H, Christopher DJ, Ciobanu LG, Cirillo M, Coates MM, Colquhoun SM, Cooper C, Cortinovis M, Crump JA, Damte SA, Dandona R, Daoud F, Dargan PI, das Neves J, Davey G, Davis AC, Leo D. De, Degenhardt L, Gobbo L.C. Del, Dellavalle RP, Deribe K, Deribew A, Derrett S, Jarlais D.C. Des, Dharmaratne SD, Dhillon PK, Diaz-Torn?? C, Ding EL, Driscoll TR, Duan L, Dubey M, Duncan BB, Ebrahimi H, Ellenbogen RG, Elyazar I, Endres M, Endries AY, Ermakov SP, Eshrati B, Estep K, Farid TA, Farinha C.S. e S., Faro A, Farvid MS, Farzadfar F, Feigin VL, Felson DT, Fereshtehnejad SM, Fernandes JG, Fernandes JC, Fischer F, Fitchett JRA, Foreman K, Fowkes FGR, Fox J, Franklin RC, Friedman J, Frostad J, Fürst T, Futran ND, Gabbe B, Ganguly P, Gankp?? FG, Gebre T, Gebrehiwot TT, Gebremedhin AT, Geleijnse JM, Gessner BD, Gibney KB, Ginawi IAM, Giref AZ, Giroud M, Gishu MD, Glaser E, Godwin WW, Gomez-Dantes H, Gona P, Goodridge A, Gopalani SV, Gotay CC, Goto A, Gouda HN, Grainger R, Greaves F, Guillemin F, Guo Y, Gupta R, Gupta R, Gupta V, Guti??rrez RA, Haile D, Hailu AD, Hailu GB, Halasa YA, Hamadeh RR, Hamidi S, Hammami M, Hancock J, Handal AJ, Hankey GJ, Hao Y, Harb HL, Harikrishnan S, Haro JM, Havmoeller R, Hay RJ, Heredia-Pi IB, Heydarpour P, Hoek HW, Horino M, Horita N, Hosgood HD, Hoy DG, Htet AS, Huang H, Huang JJ, Huynh C, Iannarone M, Iburg KM, Innos K, Inoue M, Iyer VJ, Jacobsen KH, Jahanmehr N, Jakovljevic MB, Javanbakht M, Jayatilleke AU, Jee SH, Jeemon P, Jensen PN, Jiang Y, Jibat T, JimenezCorona A, Jin Y, Jonas JB, Kabir Z, Kalkonde Y, Kamal R, Kan H, Karch A, Karema CK, Karimkhani C, Kasaeian A, Kaul A, Kawakami N, Keiyoro PN, Kemp AH, Keren A, Kesavachandran CN, Khader YS, Khan AR, Khan EA, Khang YH, Khera S, Khoja TAM, Khubchandani J, Kieling C, Kim P, Kim C. il, Kim D, Kim YJ, Kissoon N, Knibbs LD, Knudsen AK, Kokubo Y, Kolte D, Kopec JA, Kosen S, Kotsakis GA, Koul PA, Koyanagi A, Kravchenko M, Defo BK, Bicer BK, Kudom AA, Kuipers EJ, Kumar GA, Kutz M, Kwan GF, Lal A, Lalloo R, Lallukka T, Lam H, Lam JO, Langan SM, Larsson A, Lavados PM, Leasher JL, Leigh J, Leung R, Levi M, Li Y, Li Y, Liang J, Liu S, Liu Y, Lloyd BK, Lo WD, Logroscino G, Looker KJ, Lotufo PA, Lunevicius R, Lyons RA, Mackay MT, Magdy M, Razeq A. El, Mahdavi M, Majdan M, Majeed A, Malekzadeh R, Marcenes W, Margolis DJ, Martinez-Raga J, Masiye F, Massano J, McGarvey ST, McGrath JJ, McKee M, McMahon BJ, Meaney PA, Mehari A, Mejia-Rodriguez F, Mekonnen AB, Melaku YA, Memiah P, Memish ZA, Mendoza W, Meretoja A, Meretoja TJ, Mhimbira FA, Miller TR, Mills EJ, Mirarefin M, Mitchell PB, Mock CN, Mohammadi A, Mohammed S, Monasta L, Hernandez JCM, Montico M, Mooney MD, Moradi-Lakeh M, Morawska L, Mueller UO, Mullany E, Mumford JE, Murdoch ME, Nachega JB, Nagel G, Naheed A, Naldi L, Nangia V, Newton JN, Ng M, Ngalesoni FN, Nguyen Q. Le, Nisar MI, Pete PMN, Nolla JM, Norheim OF, Norman RE, Norrving B, Nunes BP, Ogbo FA, Oh IH, Ohkubo T, Olivares PR, Olusanya BO, Olusanya JO, Ortiz A, Osman M, Ota E, PA M, Park EK, Parsaeian M, de Azeredo Passos VM, Caicedo AJP, Patten SB, Patton GC, Pereira DM, Perez-Padilla R, Perico N, Pesudovs K, Petzold M, Phillips MR, Piel FB, Pillay JD, Pishgar F, Plass D, Platts-Mills JA, Polinder S, Pond CD, Popova S, Poulton RG, Pourmalek F, Prabhakaran D, Prasad NM, Qorbani M, Rabiee RHS, Radfar A, Rafay A, Rahimi K, Rahimi-Movaghar V, Rahman M, Rahman MHU, Rahman SU, Rai RK, Rajsic S, Ram U, Rao P, Refaat AH, Reitsma MB, Remuzzi G, Resnikoff S,

Reynolds A, Ribeiro AL, Blancas MJR, Roba HS, Rojas-Rueda D, Ronfani L, Roshandel G, Roth GA, Rothenbacher D, Roy A, Sagar R, Sahathevan R, Sanabria JR, Sanchez-Niño MD, Santos IS, Santos JV, Sarmiento-Suarez R, Sartorius B, Satpathy M, Savic M, Sawhney M, Schaub MP, Schmidt MI, Schneider IJC, Schöttker B, Schwebel DC, Scott JG, Seedat S, Sepanlou SG, Servan-Mori EE, Shackelford KA, Shaheen A, Shaikh MA, Sharma R, Sharma U, Shen J, Shepard DS, Sheth KN, Shibuya K, Shin MJ, Shiri R, Shiue I, Shrimel MG, Sigfusdottir ID, Silva DAS, Silveira DGA, Singh A, Singh JA, Singh OP, Singh PK, Sivonda A, Skirbekk V, Skogen JC, Sligar A, Sliwa K, Soljak M, Sreireide K, Soriano JB, Sposato LA, Sreeramareddy CT, Stathopoulou V, Steel N, Stein DJ, Steiner TJ, Steinke S, Stovner L, Stroumpoulis K, Sunguya BF, Sur P, Swaminathan S, Sykes BL, Szoek CEI, Tabaràs-Seisdedos R, Takala JS, Tandon N, Tanne D, Tavakkoli M, Taye B, Taylor HR, Te B.J. Te, Tedla BA, Terkawi AS, Thomson AJ, Thorne-Lyman AL, Thrift AG, Thurston GD, Tobe-Gai R, Tonelli M, Topor-Madry R, Topouzis F, Tran BX, Dimbuene ZT, Tsilimbaris M, Tura AK, Tuzcu EM, Tyrovolas S, Ukwaja KN, Undurraga EA, Uneke CJ, Uthman OA, van Gool CH, Varakin YY, Vasankari T, Venketasubramanian N, Verma RK, Violante FS, Vladimirov SK, Vlassov VV, Vollset SE, Wagner GR, Waller SG, Wang L, Watkins DA, Weichenthal S, Weiderpass E, Weintraub RG, Werdecker A, Westerman R, White RA, Williams HC, Wiyongse CS, Wolfe CDA, Won S, Woodbrook R, Wubshet M, Xavier D, Xu G, Yadav AK, Yan LL, Yano Y, Yaseri M, Ye P, Yebo HG, Yip P, Yonemoto N, Yoon SJ, Younis MZ, Yu C, Zaidi Z, Zaki MES, Zeeb H, Zhou M, Zodpey S, Zuhlke LJ, Murray CJL, 2016 Global, regional, and national incidence, prevalence, and years lived with disability for 310 diseases and injuries, 1990–2015: a systematic analysis for the Global Burden of Disease Study 2015. *Lancet* 388, 1545–1602. 10.1016/S0140-6736(16)31678-6 [PubMed: 27733282]

Wallace CJK, Milev R, 2017 The effects of probiotics on depressive symptoms in humans: A systematic review. *Ann. Gen. Psychiatry* 16, 1–10. 10.1186/s12991-017-0138-2 [PubMed: 28149320]

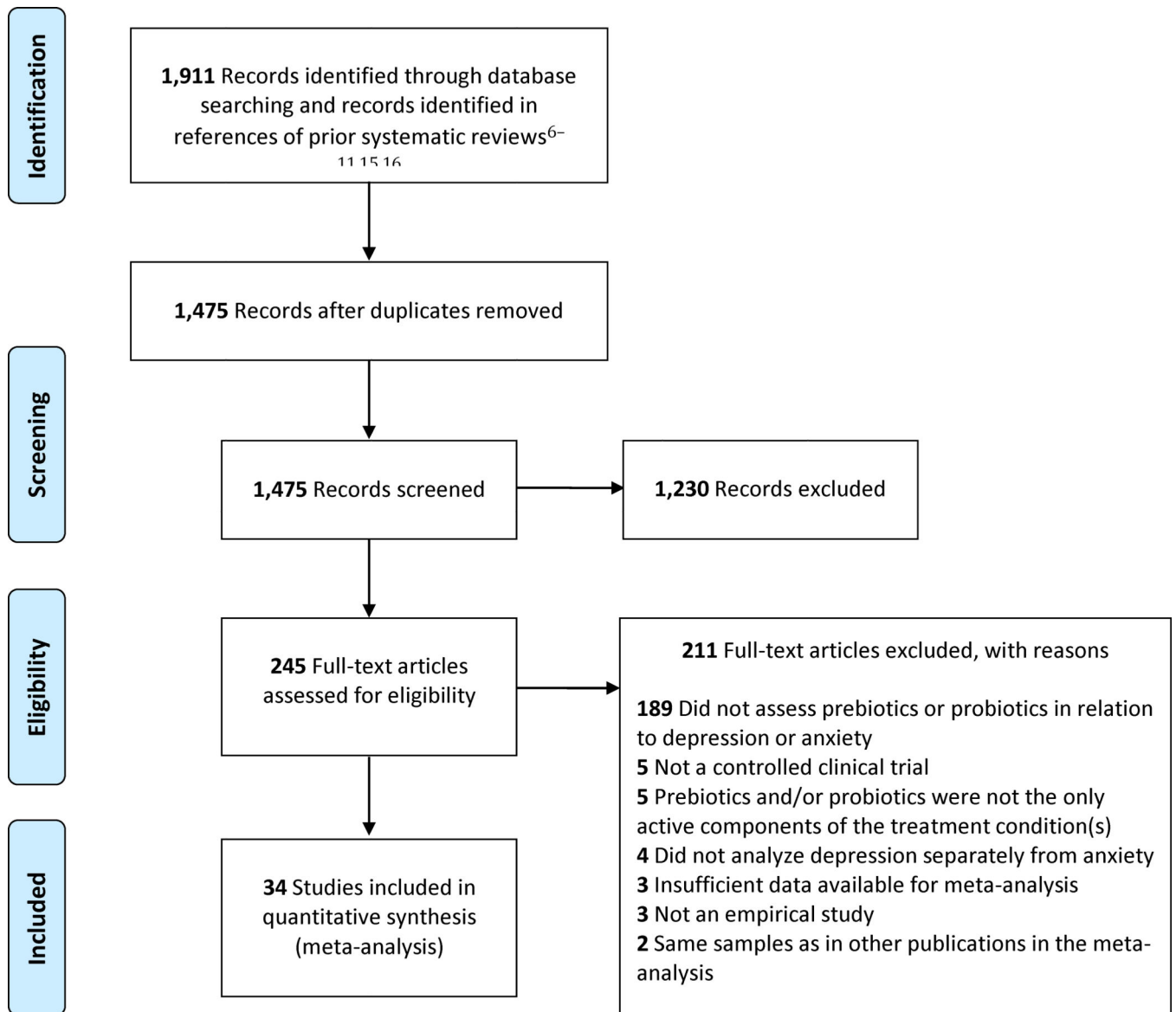
Yang H, Zhao X, Tang S, Huang H, Zhao X, Ning Z, Fu X, Zhang C, 2016 Probiotics reduce psychological stress in patients before laryngeal cancer surgery. *Asia. Pac. J. Clin. Oncol* 12, e92–e96. 10.1111/ajco.12120 [PubMed: 24571169]

Yatsunenko T, Rey FE, Manary MJ, Trehan I, Dominguez-Bello MG, Contreras M, Magris M, Hidalgo G, Baldassano RN, Anokhin AP, Heath AC, Warner B, Reeder J, Kuczynski J, Caporaso JG, Lozupone CA, Lauber C, Clemente JC, Knights D, Knight R, Gordon JI, 2012 Human gut microbiome viewed across age and geography. *Nature* 486, 222–227. 10.1038/nature11053 [PubMed: 22699611]



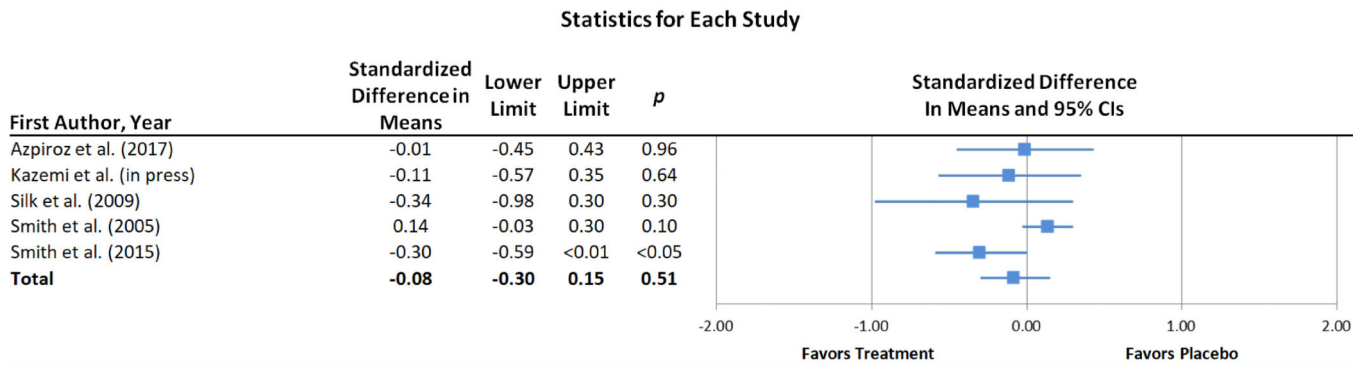
### Highlights

- A meta-analysis of prebiotic and probiotic trials for depression and anxiety
- Prebiotics did not differ from placebo for depression or anxiety
- Probiotics yielded small but significant effects for depression and anxiety
- Probiotic effects were larger for clinical than community samples for depression
- More studies of clinical samples are needed fully to evaluate therapeutic potential

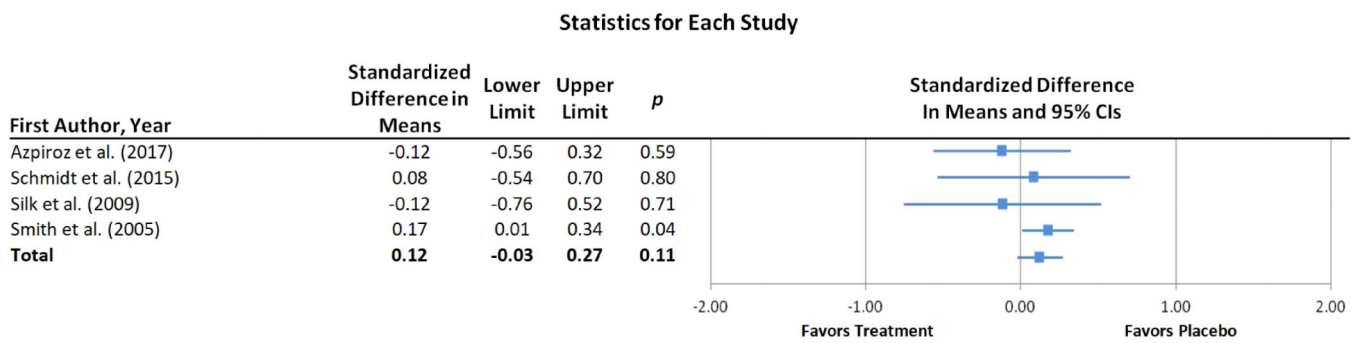


**Figure 1.**  
PRISMA flow chart of literature search

**2a. Prebiotics and depression**

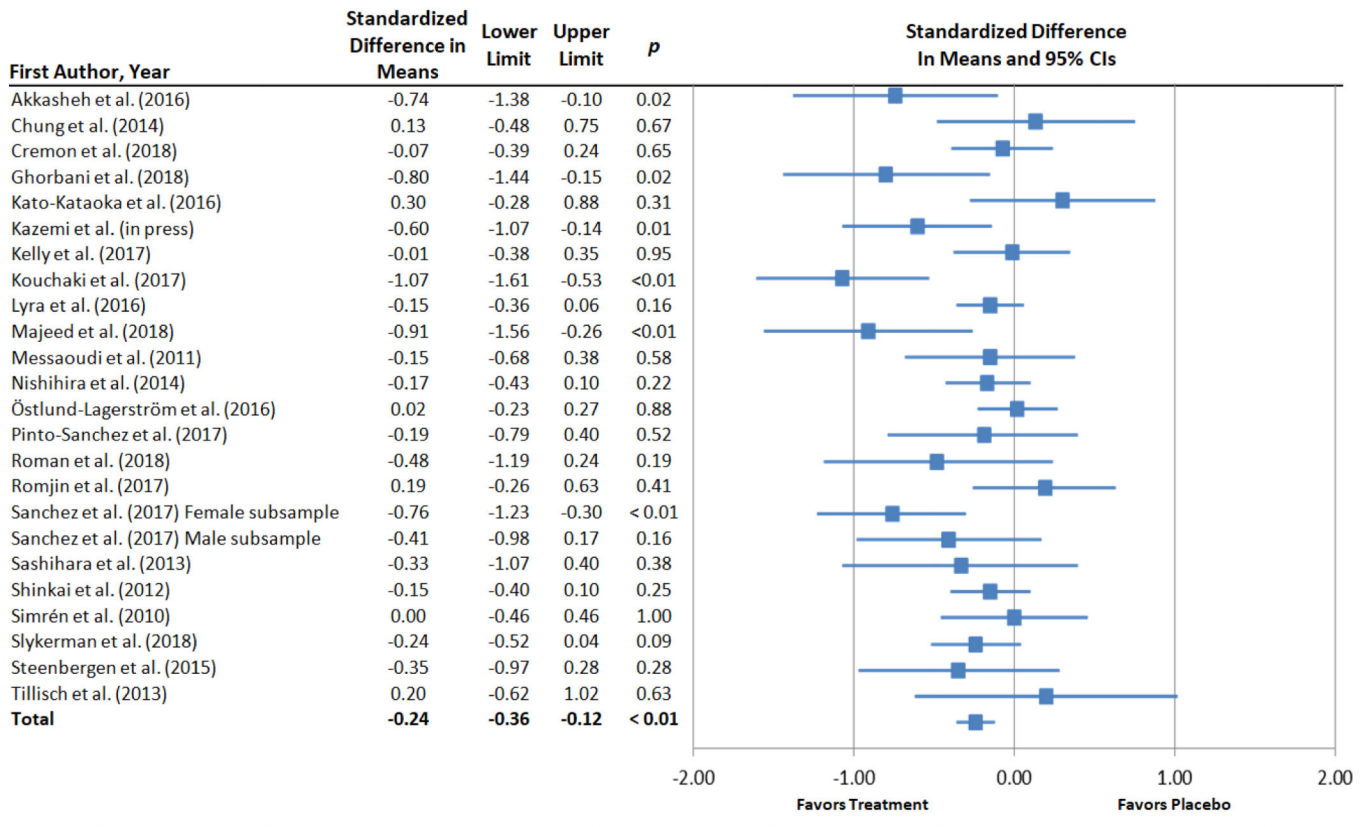


**2b. Prebiotics and anxiety**



2c. Probiotics and depression

Statistics for Each Study



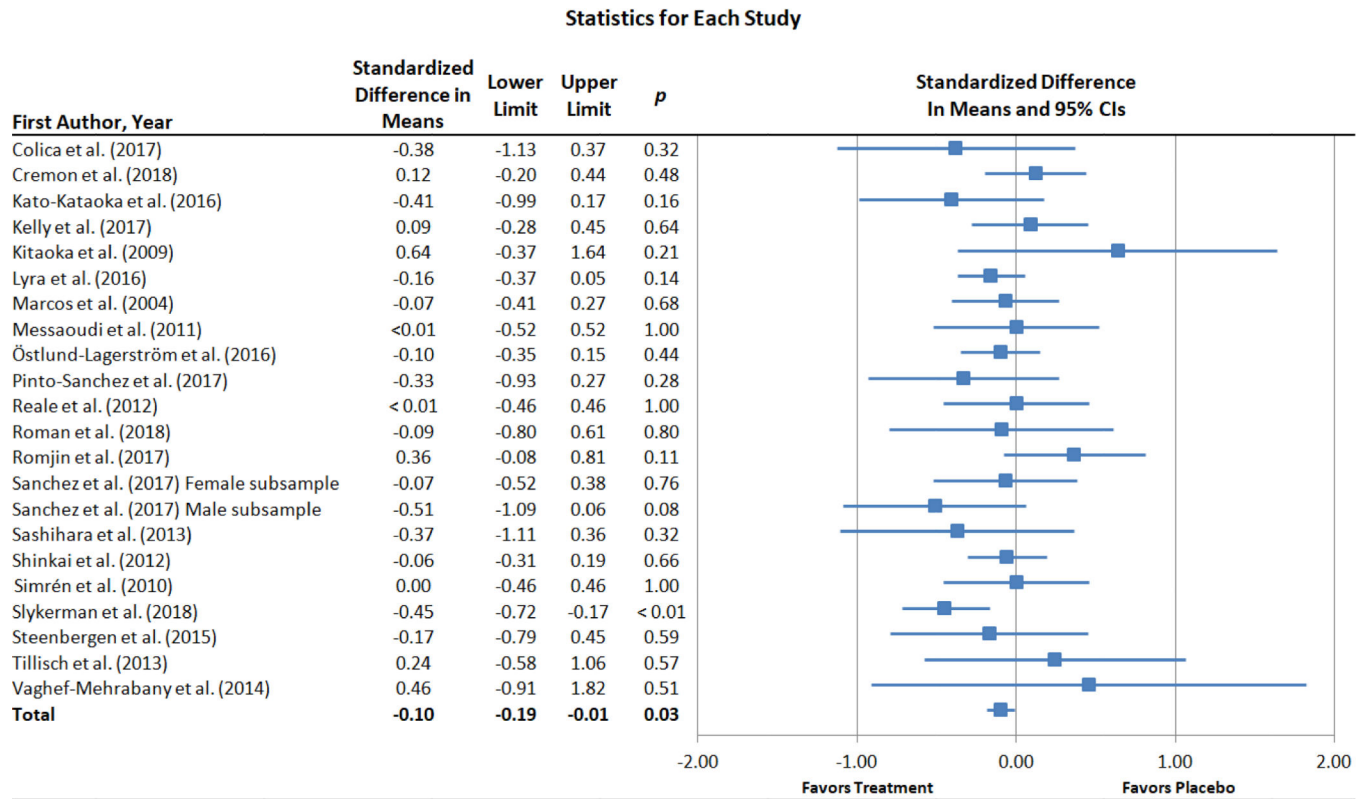
Author Manuscript

Author Manuscript

Author Manuscript

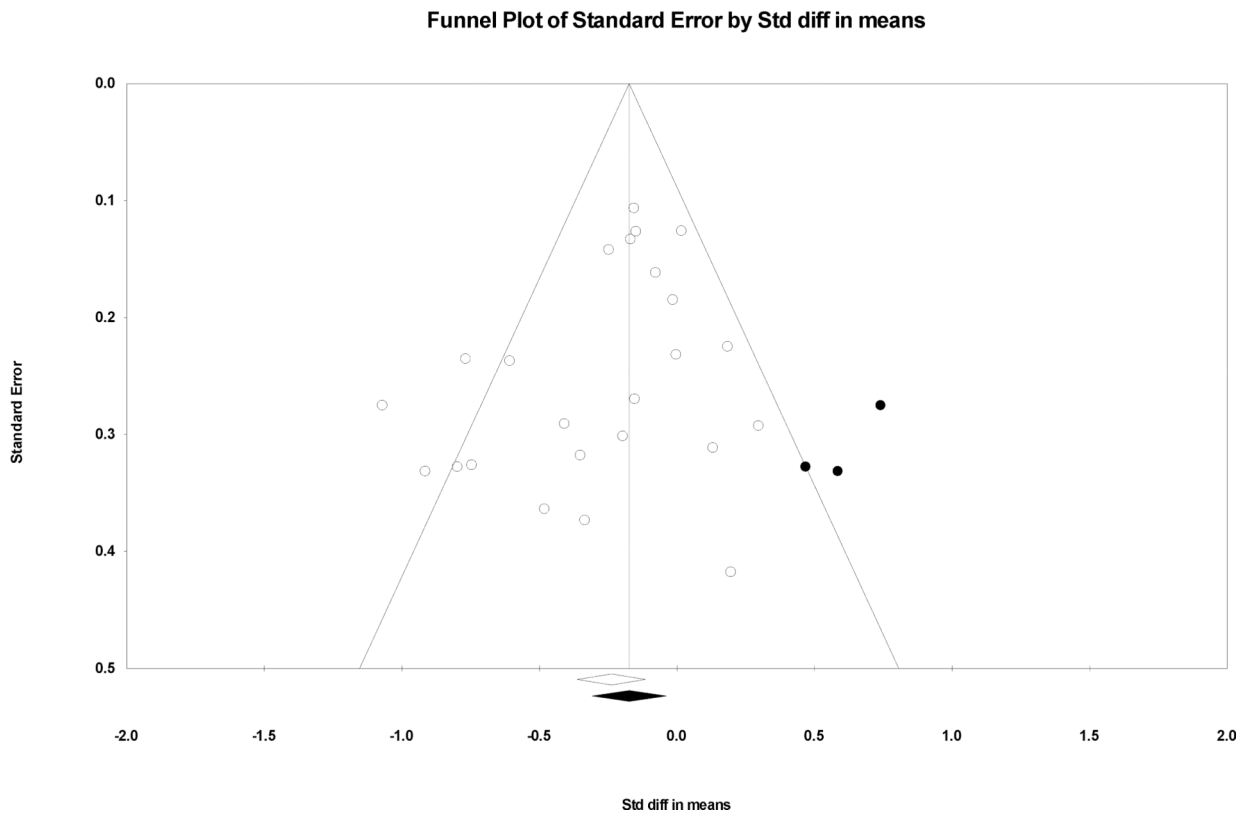
Author Manuscript

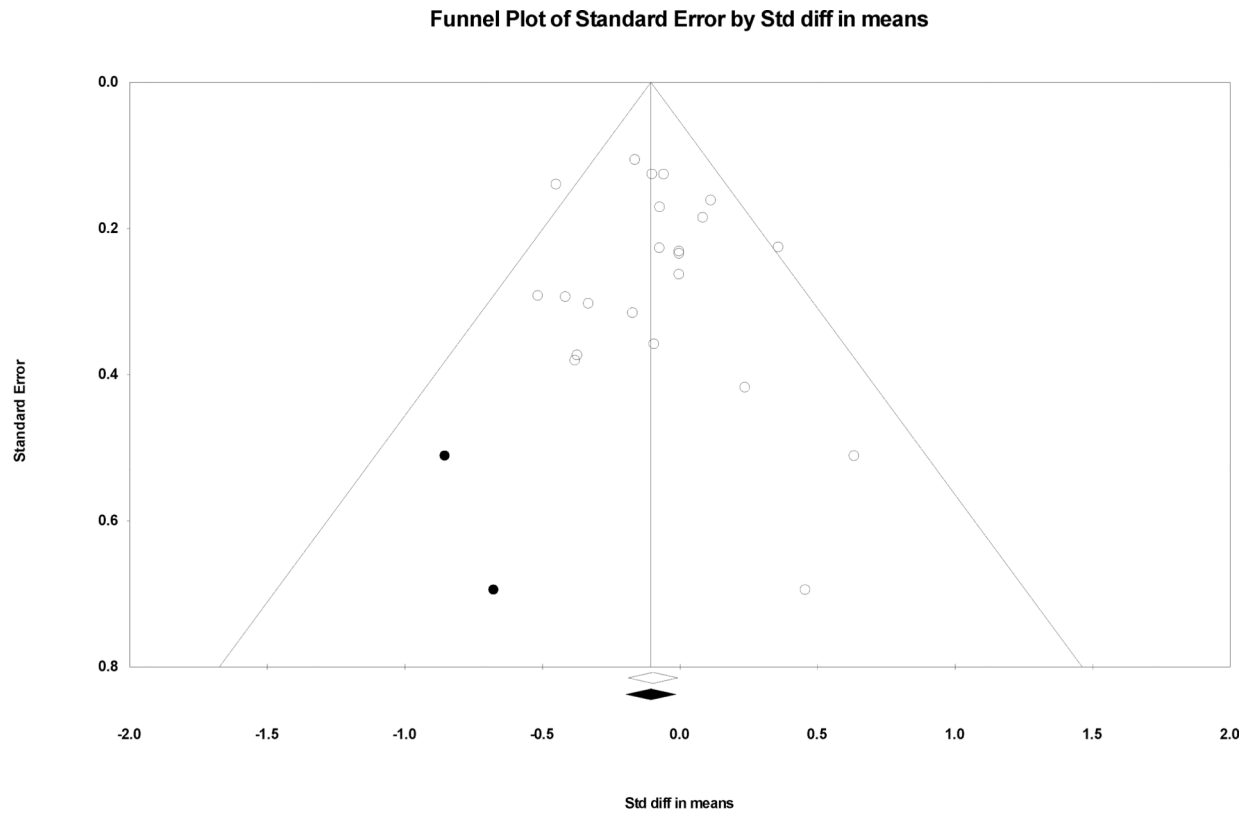
**2d. Probiotics and anxiety**



**Figure 2.** Forest plots of standardized effect sizes (Cohen’s *d*) of prebiotic and probiotic trials for depression and anxiety.

### 3a. Probiotics and depression





### 3b. Probiotics and anxiety

**Figure 3.**

Funnel plot for effect sizes in the meta-analyses. The vertical line indicates the weighted mean effect. Open circles indicate observed effects for actual studies, and closed circles indicate imputed effects for studies believed to be missing due to publication bias. The clear diamond reflects the unadjusted weighted mean effect size, whereas the black diamond reflects the weighted mean effect size after adjusting for publication bias.

Table 1.

## Study characteristics

Study Authors (year)	N <sup>a</sup>	% Female <sup>a</sup>	Mean Age <sup>a</sup>	Sample	Prebiotic Compound(s)/Probiotic Microbe(s)	Length of Treatment	Clinical Outcome(s)	Clinical Measure(s)
<b>Prebiotics</b>								
Azpiroz et al. (2017)	79	75.95	41.67	Medical (IBS patients)	scFOS	4 weeks	anx, dep	HADS-A, HADS-D
Kazemi et al. (2019)	72	70.83	36.68	Clinical (MDD patients)	GOS	8 weeks	dep	BDI-II
Schmidt et al. (2015)	45	51.11	23.69	Community	B-GOS, FOS	3 weeks	anx	STAI
Silk et al. (2009)	44	63.64	54.00	Medical (IBS patients)	B-GOS	4 weeks	anx, dep	HADS-A, HADS-D
Smith (2005)	142	51.00	32.00	Community	FOS-enriched inulin	2 weeks	anx, dep	HADS-A, HADS-D
Smith et al. (2015)	47	59.57	23.00	Community	FOS-enriched inulin	4 hours	dep	SSM
<b>Probiotics</b>								
Akbarshah et al. (2016)	40	85.00	37.20	Clinical (MDD patients)	<i>Bifidobacterium bifidum</i> , <i>Lactobacillus acidophilus</i> , <i>Lactobacillus casei</i>	8 weeks	dep	BDI-I
Chung et al. (2014)	36	44.40	65.00	Community	<i>Lactobacillus helveticus</i>	12 weeks	dep	GDS-SF
Colicaj et al. (2017)	30	83.30	45.00	Community	<i>Bifidobacterium lactis</i> , <i>Lactobacillus acidophilus</i> , <i>Lactobacillus bulgari</i> , <i>Lactococcus lactis subspecies lactis</i> , <i>Lactobacillus plantarum</i> , <i>Lactobacillus reuteri</i> , <i>Streptococcus thermophilus</i> , <i>Streptococcus thermophilus</i>	3 weeks	anx	HAM-A
Cremion et al. (2018)	40	65.00%	40.95	Medical (IBS patients)	<i>Lactobacillus paracasei</i>	4 weeks	anx, dep	HADS-A, HADS-D
Ghorbani et al. (2018)	40	34.98	70	Clinical (MDD patients)	FOS, <i>Bifidobacterium breve</i> , <i>Bifidobacterium longum</i> , <i>Lactobacillus acidophilus</i> , <i>Lactobacillus bulgarius</i> , <i>Lactobacillus casei</i> , <i>Lactobacillus rhamnosus</i> , <i>Streptococcus thermophilus</i>	6 weeks	dep	HAM-D
Kato-Kamoaka et al. (2016)	47	44.68	22.85	Community (medical students)	<i>Lactobacillus casei</i> Shirota	8 weeks	anx, dep	HADS-A, HADS-D
Kazemi et al. (2019)	74	68.92	36.08	Clinical (MDD patients)	<i>Bifidobacterium longum</i> , <i>Lactobacillus helveticus</i>	8 weeks	dep	BDI-II
Kelly et al. (2017)	29	0	24.59	Community	<i>Lactobacillus rhamnosus</i>	4 weeks	anx, dep	BAI, BDI (version unspecified), STAI
Kitaoka et al. (2009)	16	0	20.69	Community	<i>Lactobacillus paracasei</i>	8 days	anx	STAI
Kouchaki et al. (2017)	60	83.33	34.10	Medical (MS patients)	<i>Bifidobacterium bifidum</i> , <i>Lactobacillus acidophilus</i> , <i>Lactobacillus casei</i> , <i>Lactobacillus fermentum</i>	12 weeks	dep	BDI-I
Lya et al. (2016)	391	74.68	47.90	Medical (IBS patients)	<i>Lactobacillus acidophilus</i>	12 weeks	anx, dep	HADS-A, HADS-D
Majeed et al. (2018)	40	85.00	42.12	Clinical and Medical (patients with MDD and IBS)	<i>Bacillus coagulans</i>	90 days	dep	CES-D, HAM-D, MADRS
Marcos et al. (2004)	136	70.59	NR	Community (college students)	<i>Lactobacillus casei</i> , <i>Lactobacillus delbrueckii subspecies bulgaricus</i> , <i>Streptococcus salivarius subspecies thermophilus</i>	6 weeks	anx	STAI
Messaoudi et al. (2011)	55	74.55	42.82	Community	<i>Bifidobacterium longum</i> , <i>Lactobacillus helveticus</i>	30 days	anx, dep	HADS-A, HADS-D
Nishihira et al. (2014)	224	69.20	53.92	Community	<i>Bifidobacterium longum</i> , <i>Lactobacillus gasseri</i>	12 weeks	dep	GHQ-28 depression subscale
Östlund-Lagersröm et al. (2016)	238	61.04	72.30	Community (elderly)	<i>Lactobacillus reuteri</i>	12 weeks	anx, dep	HADS-A, HADS-D
Pino-Sanchez et al. (2017)	44	54.00	43.25	Medical (IBS patients)	<i>Bifidobacterium longum</i>	6 weeks	anx, dep	HADS-A, HADS-D, STAI
Reale et al. (2012)	65	0	50.30	Community (smokers)	<i>Lactobacillus casei</i> Shirota	3 weeks	anx	STAI



Study Authors (year)	$N^a$	% Female <sup>a</sup>	Mean Age <sup>a</sup>	Sample	Prebiotic Compound(s)/Probiotic Microbe(s)	Length of Treatment	Clinical Outcome(s)	Clinical Measure(s)
Roman et al. (2018)	31	90.32	52.71	Medical (fibromyalgia patients)	<i>Bifidobacterium bifidus</i> , <i>Lactobacillus acidophilus</i> , <i>Lactobacillus casei</i> , <i>Lactobacillus rhamnosus</i>	8 weeks	anx, dep	BDI-I, STAI
Romijn et al. (2017) <sup>d</sup>	79	78.48	35.45	Clinical	<i>Bifidobacterium longum</i> , <i>Lactobacillus helveticus</i>	8 weeks	anx, dep	DASS, MADRS, QIDS-SR16
Sanchez et al. (2017) <sup>e,f</sup>	125	61.60	36.01	Medical (obese subjects)	FOS, inulin, <i>Lactobacillus rhamnosus</i>	24 weeks	anx, dep	BDI-I, STAI
Sashihara et al. (2013)	29	0	19.99	Community <i>Lactobacillus gasseri</i> (college athletes)	<i>Lactobacillus gasseri</i>	4 weeks	anx, dep	POMS
Shinkai et al. (2013)	278	50.36	70.90	Community	<i>Lactobacillus pentosus</i>	20 weeks	anx, dep	POMS
Simón et al. (2010) <sup>b</sup>	74	43.00	70.27	Medical (IBS patients)	<i>Bifidobacterium lactis</i> , <i>Lactobacillus acidophilus</i> , <i>Lactobacillus bulgaricus</i> , <i>Lactobacillus paracasei</i> , <i>Streptococcus thermophilus</i>	8 weeks	anx, dep	HADS-A, HADS-D
Slykerman et al. (2017)	381	100	33.60	Community (pregnant women)	<i>Lactobacillus rhamnosus</i>	45 weeks	anx, dep	EPDS, STAI
Steenbergen et al. (2015) <sup>b</sup>	40	60.00	19.95	Community	<i>Bifidobacterium bifidum</i> , <i>Bifidobacterium lactis</i> , <i>Lactobacillus acidophilus</i> , <i>Lactobacillus brevis</i> , <i>Lactobacillus casei</i> , <i>Lactobacillus salivarius</i> , <i>Lactococcus lactis</i>	4 weeks	anx, dep	BAI, BDI-II
Tiltsch et al. (2013) <sup>b</sup>	23	100	30.00	Community	<i>Bifidobacterium animalis</i> , <i>Lactobacillus bulgaricus</i> , <i>Lactococcus lactis</i> , <i>Streptococcus thermophilus</i>	4 weeks	anx, dep	HADS-A, HADS-D
Vaghef-Mehrabany et al. (2014)	46	100	42.78	Medical (rheumatoid arthritis patients)	<i>Lactobacillus casei</i>	8 weeks	anx	STAI Form Y
Yang et al. (2016) <sup>b,h</sup>	20	50.00	58.05	Medical (tarygeal cancer patients)	<i>Clostridium butyricum</i>	2 weeks	anx	HAM-A

Note: anx = anxiety; BAI = Beck Anxiety Inventory; BDI = Beck Depression Inventory; B-GOS = Bimuno@-galactooligosaccharide; CES-D = Center for Epidemiologic Studies – Depression Scale; DASS = Depression Scale; DASS = Depression Anxiety and Stress Scale; dep = depression; EPDS = Edinburgh Postnatal Depression Scale; FOS = fructooligosaccharide; GDS-SF = Geriatric Depression Scale – Short Form; GHQ = General Health Questionnaire; GOS = galactooligosaccharide; HADS-A = Hospital Anxiety and Depression Scale – Anxiety subscale; HADS-D = Hospital Anxiety and Depression Scale – Depression subscale; HAM-A = Hamilton Rating Scale for Anxiety; IBS = irritable bowel syndrome; MADRS = Montgomery-Åsberg Depression Rating Scale; MDD = major depressive disorder; MS = multiple sclerosis; NR = not reported; POMS = Profile of Mood States; QIDS-SR16 = Quick Inventory of Depressive Symptomatology – 16-item short-form; seFOS = short-chain fructooligosaccharide; SSM = study-specific measure; STAI = State-Trait Anxiety Inventory

In cases where data for multiple outcome measures are available in a given study, the mean of these measures was incorporated into the relevant meta-analysis.

<sup>a</sup>The number, mean age, and % female of participants included in relevant analyses, rather than for the entire study sample, are presented and were incorporated in moderator analyses whenever available and applicable.

<sup>b</sup>Prospective subjects with psychopathology were screened out. These studies were categorized as having non-clinical samples for the purpose of moderator analyses.

<sup>c</sup>A cross-over design was employed.

<sup>d</sup>Subjects were selected for elevated depression (no studies selected for elevated anxiety).

<sup>e</sup>Subjects were administered a compound consisting of both prebiotics and probiotics.

<sup>f</sup>Prospective subjects with minimal and severe depression and anxiety symptoms were screened out.

<sup>g</sup>Separate effects were reported by sex.

<sup>h</sup>Outlier excluded from meta-analysis.