

Parkinson's Disease: Is It a Consequence of Human Brain Evolution?

Nico J. Diederich, MD,^{1*} D. James Surmeier, PhD,² Toshiki Uchihara, MD,^{3,4,5} Sten Grillner, PhD⁶ and Christopher G. Goetz, MD⁷

¹Department of Neurosciences, Centre Hospitalier de Luxembourg, Luxembourg City, Luxembourg

²Department of Physiology, Feinberg School of Medicine, Northwestern University, Chicago, Illinois, USA

³Neurology Clinic with Neuromorphomics Laboratory, Nitobe Memorial Nakano General Hospital, Tokyo, Japan

⁴Department of Neurology and Neurological Science, Tokyo Medical and Dental University, Tokyo, Japan

⁵Structural Neuropathology, Tokyo Metropolitan Institute of Medical Science, Tokyo, Japan

⁶Department of Neuroscience, Karolinska Institutet, Stockholm, Sweden

⁷Department of Neurological Sciences, Rush University, Chicago, Illinois, USA

PD Is an Exclusively Human Disease

Although experimental lesions to the dopaminergic system lead to Parkinson's disease (PD)-like motor symptoms in vertebrates extending from lamprey to primates,¹ parkinsonism does not occur naturally in any species other than man. Aged nonhuman primates may show impaired fine motor control and reduced home cage activity, but these deficits are not sensitive to levodopa administration and are not accompanied by Lewy body (LB) burden.² But why should PD be an exclusively human disease? One possibility is that the dramatic expansion of the telencephalon, particularly the neocortex, in humans creates a significant burden on subcortical circuits with which the telencephalon interacts, leading to increased vulnerability to aging, genetic mutations associated with PD, and environmental toxins.

Humans and Telencephalization

The human brain is approximately 3 times larger than that expected from a plot of brain weight against

body size for nonhuman primates (Fig. 1A).³ This expansion concerns largely telencephalic structures.³ Expansion of the prefrontal cortex has been examined in detail, but there is ongoing debate on mechanistic aspects.^{4,5} In comparison to other primates, molecular and cellular reorganization of neural circuitries in humans may be crucial.⁶ The relative growth of the human cerebral cortex may have been attributed to relaxed genetic control and the shift in the human diet from exclusively plants to a mixture of plants and nutritionally dense animal tissue, which allowed the metabolic demands of the cerebral cortex to be met without expanding the digestive tract.^{7,8}

Telencephalization has had obvious advantages for humans. Triggering neurodegeneration has been proposed as a downside⁹ to this growth. Could this telencephalic expansion be particularly detrimental for subcortical structures that interact with the cortex but have not grown commensurately? The basal ganglia (BG) blueprint arose nearly 500 million years ago and has been preserved throughout vertebrate phylogeny (Fig. 1B).¹⁰ This network helps make goal-directed behavior and habits rapid and "automatic." When the BG is impaired, control becomes slower and less efficient; moreover, the ability to generate rapid, stimulus-driven, habitual motor sequences is largely lost.¹¹ The largest of the BG nuclei is the striatum; it integrates information from other telencephalic structures—principally the cerebral cortex—about motor plans, internal motivational and affective states, and the external environment. Striatal activity regulates the BG interface nuclei, which then modulate other brain regions controlling movement and thought.¹² The SNc is a key part of the BG circuit. The widely arborizing axons of these neurons innervate all parts of the BG, but have a particularly dense innervation of the striatum.¹³ Striatal processing of cortical signals depends upon this dopaminergic innervation, because it provides critical

This is an open access article under the terms of the Creative Commons Attribution License, which permits use, distribution and reproduction in any medium, provided the original work is properly cited.

*Correspondence to: Dr. Nico J Diederich, Department of Neurosciences, Centre Hospitalier de Luxembourg, 4, rue Barblé, L-1210 Luxembourg; E-mail: diederich.nico@chl.lu

Relevant conflicts of interest/financial disclosures: Nothing to report.

Full financial disclosures and author roles may be found in the online version of this article.

Received: 30 August 2018; **Revised:** 21 December 2018; **Accepted:** 7 January 2019

Published online 13 February 2019 in Wiley Online Library (wileyonlinelibrary.com). DOI: 10.1002/mds.27628

information about the outcome of actions and ongoing movement.¹⁴

Although ontogenetically the striatum is part of the telencephalon, in the course of human evolution, neocortical growth has been 5 times that of striatum.¹⁵ In fact, human striatal volume is significantly below predicted values from anthropoids (Fig. 1C). One way in which the striatum may have dealt with this “involution” is by “exaptation,” where ancestral circuits take on new jobs (Fig. 1E). Another part of the BG that has not kept pace with the cerebral cortex is the SNc. In humans, the number of SNc dopaminergic neurons per unit striatal volume is roughly one tenth that in a rodent.¹⁶ This means an individual SNc dopaminergic neuron innervates a much greater volume in humans. In humans, it is estimated that a single SNc axon may

form 1 to 2 million synapses in the striatum—an order of magnitude greater than the number in a rodent.¹⁶ This extraordinary growth may be crucial to pathogenesis, given that the axon is widely thought to be the most vulnerable part of the human SNc dopaminergic neuron, beginning to degenerate in the earliest stages of PD.

Other vulnerable parts of the brain also appear to have been “left behind.” This concerns the evolutionarily oldest parts of the amygdala such as the basal, accessory basal, and central amygdaloid nuclei; the human central amygdaloid nucleus is estimated to be one third the size expected of a hominoid.¹⁷ In contrast, the evolutionarily younger lateral amygdaloid nucleus is almost 40% larger than expected. Of note: The cells of the older amygdalar nuclei are densely branched

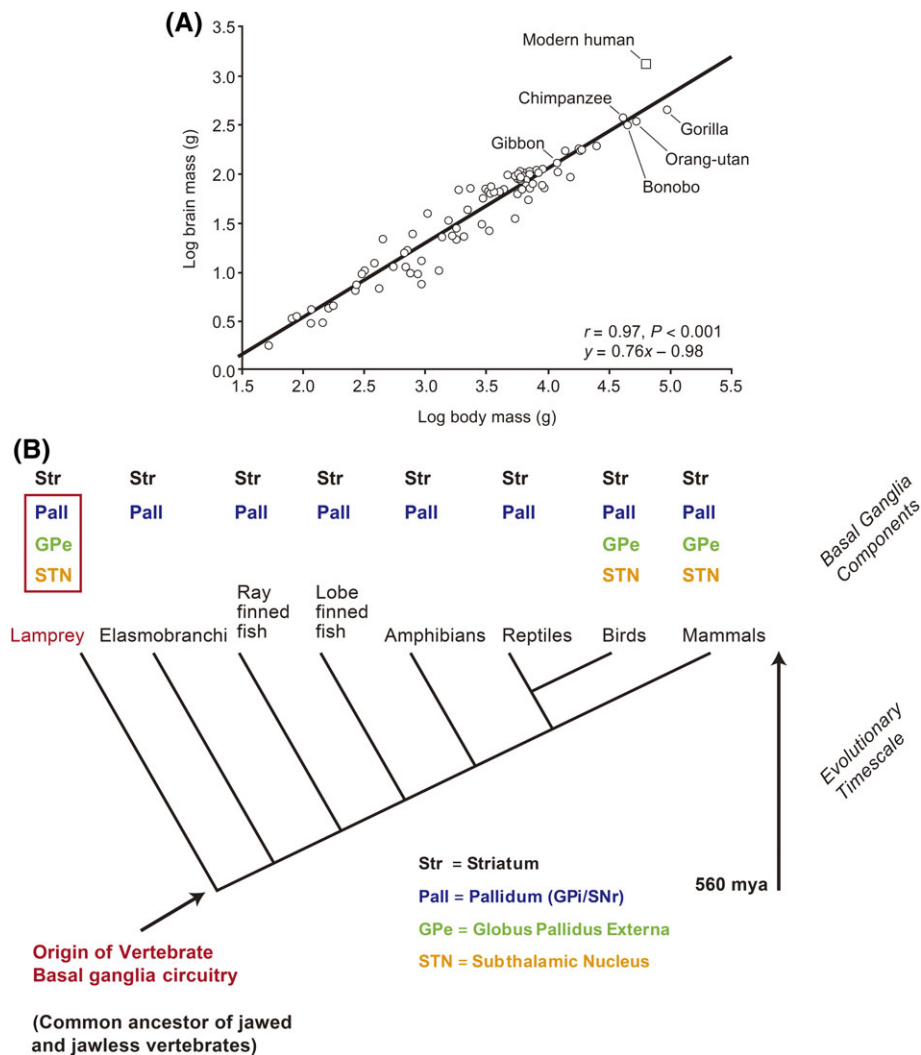


FIG. 1. Evolutionary aspects of BG components in humans. (A) Human brain mass larger by scaling plot based on primates⁴⁰ [with permission]. (B) Clade of the BG: all parts already present in lampreys⁴¹ [with permission]. (C) Negative deviations from regression line for striatum and amygdaloid nuclei in humans¹⁷ [with permission]. (D) Human LC (vertical axis) shows fewer neurons than expected by comparison to neocortex volume (horizontal axis); TH = tyrosine hydroxylase¹⁹ [with permission]. (E) Diagram showing the evolutionarily conserved functional module of the motor loop and subsequent “copy paste” of this module for other functions by the exaptation principle. Blue = GABAergic projections; red = glutamatergic projections; DP = dorsal pallidum; Enk = enkephalin; EP = entopeduncular nucleus; GP = globus pallidus; Gpe = external segment of the globus pallidus; Hb = habenula; ntp = nucleus tuberculi posterior; SP = substance P; Th = thalamus⁴¹ [with permission].

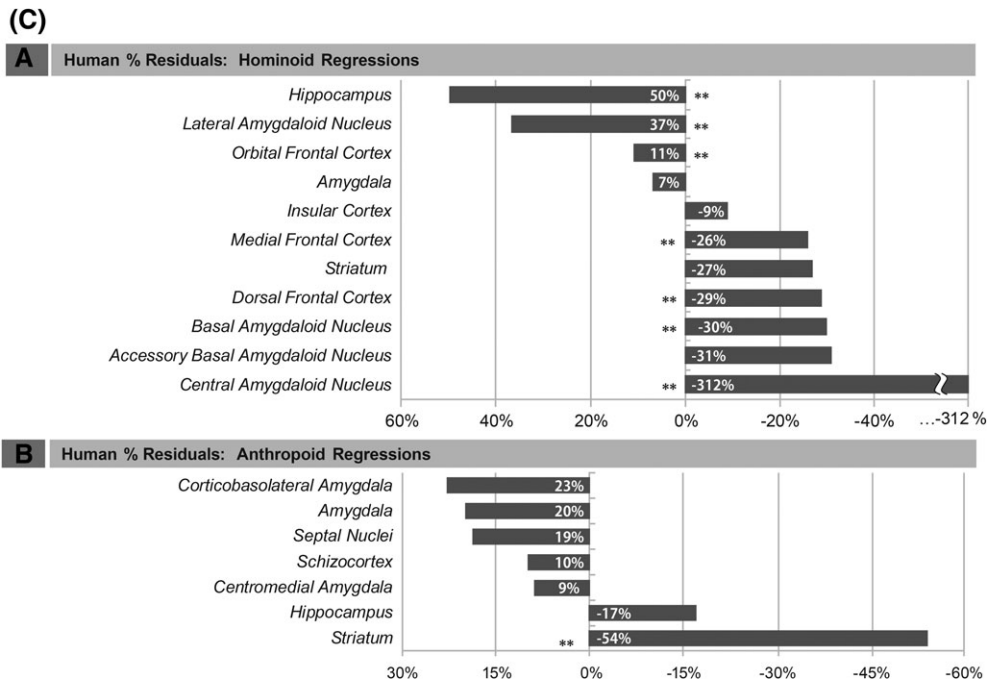


FIG. 1. (Continued)

spiny neurons similar to the striatum, whereas the younger amygdalar nuclei contain pyramidal-like neurons similar to the cerebral cortex.¹⁸ When compared to the cerebral cortex, the total number of locus coeruleus (LC) neurons is substantially lower than expected in humans (Fig. 1D).¹⁹ The olfactory bulb is approximately 30% as large as it should be for a primate brain.²⁰ Many of the other neurons at-risk in PD—basal forebrain cholinergic neurons, pedunculopontine cholinergic neurons, intralaminar thalamic glutamatergic neurons, raphe serotonergic neurons, and lateral hypothalamic orexin neurons—also have long, highly branched axons that innervate the cerebral cortex or regions that have been affected by the relative growth of the telencephalon.²¹

Mitochondrial Determinants of Vulnerability

How might a highly branched, unmyelinated axon with millions of transmitter release sites increase a neuron’s risk in PD? Most of the thinking around this point has focused on the bioenergetic demands associated with sustaining the electrochemical gradients necessary for spike propagation and the machinery necessary for neurotransmission. The proposition that mitochondrial oxidant stress is a driver of pathogenesis in PD is consistent with three other key pieces of evidence. First, genetic mutations that increase mitochondrial oxidant stress or impair mitochondrial quality control lead to early-onset forms of PD. Second,

environmental toxins that impair mitochondrial function increase the risk of PD. Third, mitochondrial function declines with age—the biggest risk factor for PD.²² However, there are counterexamples where other neurons with extensive axonal arbors, such as the neurons of the internal globus pallidus (GPi) and the cholinergic medium spiny interneurons—ones as large as those of SNc dopaminergic neurons—that do not succumb in PD.²³ Are there other distinguishing features of at-risk neurons that might advance the “tipping point”? The best-studied example is the SNc dopaminergic neuron. At-risk ventral tier SNc dopaminergic neurons are slow, autonomous pacemakers with broad action potentials and large oscillations in cytosolic Ca²⁺ concentration.²⁴ Although Ca²⁺ oscillations contribute to pacemaking per se, their primary function appears to be bioenergetic. With each cycle of pacemaking, plasma membrane Cav1 (L-type) Ca²⁺ channels open and trigger the release of Ca²⁺ from intracellular stores. This release loads juxtaposed mitochondria with Ca²⁺, driving oxidative phosphorylation and adenosine triphosphate (ATP) production. This “anticipatory” or feed-forward bioenergetic control mechanism appears to be a phylogenetically old mechanism that diminishes the chances that bouts of unpredictable, sustained activity result in ATP depletion that shuts a neuron down.¹² For SNc dopaminergic neurons, terminal or somatodendritic ATP depletion and the failure to sustain dopamine release during periods of fight or flight would be dangerous, even disastrous, given that it would slow movement at precisely the time when survival is threatened. Why is the direct dopaminergic innervation of the

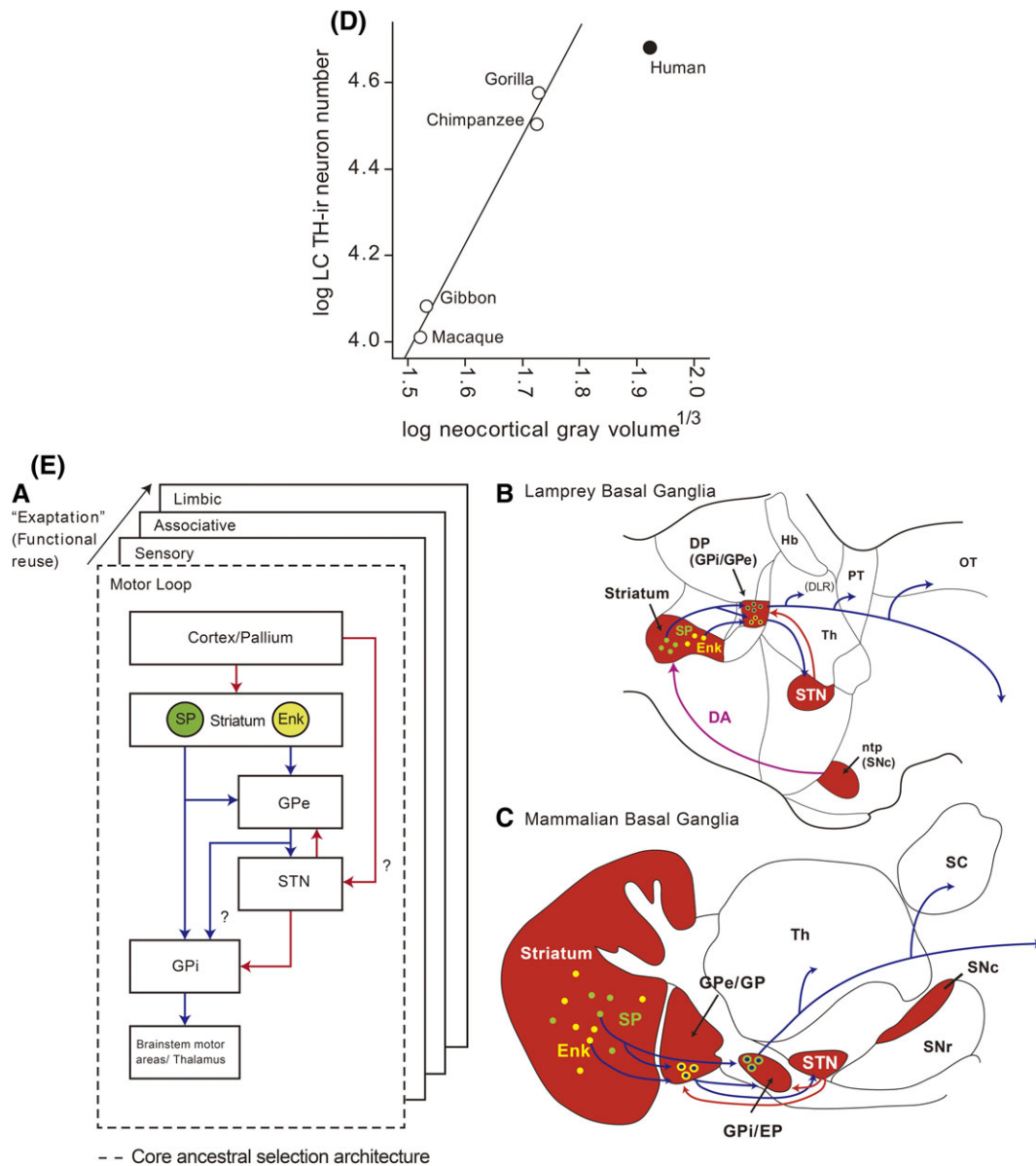


FIG. 1. (Continued)

cerebral cortex by the ventral tegmental area (VTA) not affected by the same process? The answer is likely to be many-faceted given that VTA dopamine (DA) neurons have a quite different phenotype; for example, their axons are less branched with fewer release sites, they have lower mitochondrial oxidant stress, and they buffer calcium more robustly.²⁰

However, this kind of control mechanism generates superoxide. Superoxide and derivative reactive oxygen species can damage protein, lipid, and DNA. Over time, this stress could irreversibly compromise mitochondrial function. Indeed, loss of mitochondrial complex I function and mitochondrial DNA deletions are hallmarks of the SNc of PD patients.²⁵ Mitochondrial oxidant stress in human (but not mouse) DA neurons also increases oxidation of DA, which compromises lysosomal

function.²⁶ Many PD-prone neurons have a similar physiological phenotype, including basal mitochondrial oxidant stress. So, the combination of three factors—telencephalization (unequal brain growth), a particular anatomical phenotype, and a physiological phenotype that stresses mitochondria and aging—creates the conditions necessary for genetic mutations and environmental toxins to cause PD specifically in humans.

Reconciling the Clinical Picture With Theories of Pathogenesis

The proposition that PD is a consequence of telencephalization and the pathological stress it places on vulnerable subcortical neuromodulatory networks has

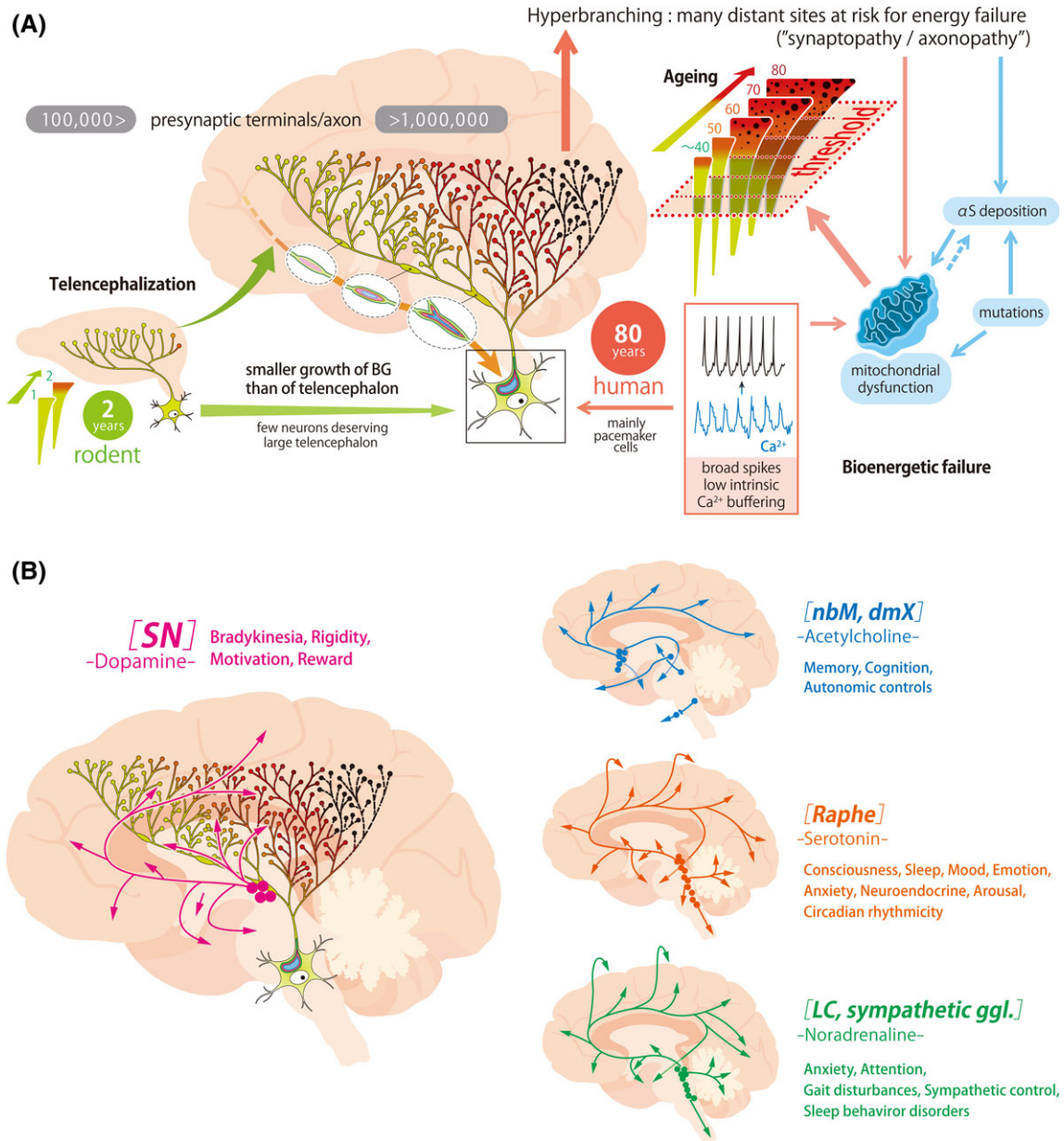


FIG. 2. Schematic depicting the key features of system proneness to PD pathology. (A) Telencephalization is exponentially larger in humans than in other mammals, here exemplified as rodents. In parallel, the branching of the BG neurons is considerably larger. Slow pacemaking cells are presumably hyperbranching. Their autonomous cell activity provides long-range neuromodulation and relies on feed-forward bioenergetics control, with calcium-dependent and energy-expensive cellular metabolism, endangering mitochondria, especially at the α -synuclein-rich synapses. Once a certain threshold is reached, here schematized as a horizontal bar, synaptic and axonal dysfunction occurs, giving rise to first vague and later more concise clinical symptoms. This cascade of events may occur synchronously in different systems with a similar cellular at-risk phenotype. The slower growth of the BG in comparison to the telencephalon as well as the long human life span promote these processes. (B) PD-prone systems are characterized by hyperbranching axons regardless of the neurotransmitters. Because hyperbranching neurons project to wide brain areas, related symptoms are multifaceted. Each dot represents neuronal groups with projecting axons indicated by arrows. Of note, nonmotor symptoms transmitted by the dopaminergic VTA are also included, although disease susceptibility is much higher in SNc than VTA neurons, reflecting the distinctive physiology, bioenergetic control mechanisms, and higher numbers of varicosities in the SNc. nbM, nucleus basalis of Meynert; dmX, dorsal motor nucleus of vagus; ggl., ganglia.

clear implications for how symptoms should evolve in PD patients. Our model stands in sharp contrast to the widely held view that PD is a prion disorder.^{27,28} In its simplest form, the prion hypothesis posits that aSYN pathology and symptoms are dictated by synaptic proximity to a peripheral seeding site (in the gut or olfactory bulb); thus, there is a centripetal spread of aSYN

pathology through anatomically coupled networks.²⁹ This model implies that symptoms should follow a stereotyped sequence, with the earliest symptoms being peripheral. In contrast, the “telencephalization hypothesis” predicts symptoms should manifest themselves in parallel,³⁰ with local or patient-specific factors governing the precise sequence of symptoms (Fig. 2A,B). In this

context, our hypothesis is closer to the cortical pathogenic theory of PD proposing that corticostriatal activities figure as “stressors” in parallel to the SNc and other vulnerable structures.³¹

The prion hypothesis is also difficult to reconcile with the variable spatiotemporal distribution pattern of pathology and symptoms observed in PD patients.³² This variability in pattern of pathology also prohibits the clear delineation of the sequence and range of PD symptoms (motor and nonmotor). Apathy, fatigue, alexithymia, bradyphrenia, and depression have all been linked to prodromal PD³³ and are likely to be dependent upon dysfunction in evolutionary old structures coupled to the telencephalon.³² At the motor stage of the disease, dysfunction of other evolutionarily old circuitries becomes evident. An example is blindsight, a subconscious form of visual perception considered to be means of detecting rapidly approaching predators. It is impaired in PD patients, because they show deficits in grasping saccades, motion perception, and immediate emotional face perception.³⁴ The superior colliculi, which are critical to blindsight, are evolutionarily old structures that are richly connected to the forebrain. PD patients also have deficits in gait automatization. The underlying circuitry in the medulla and spinal cord is evolutionarily old and controlled by telencephalic networks.³⁵ Finally, dysregulation of neuromotor systems in sleep may trigger REM sleep behavior disorder, given that in phylogenetic evolution body movements during sleep (active sleep) are primarily a natural phenomenon.³⁶

Not all nominally prodromal PD symptoms fall so nicely into our model. Both olfactory and gastrointestinal (GI) dysfunction have been posited to be symptoms of impending PD. Both are thought to be peripheral sites for aSYN pathology. Although these are evolutionarily old systems, the nature of the pathology in these regions, its relationship to nonmotor symptoms, and its relationship to PD more broadly are unresolved. For example, deficits in olfactory discrimination could be a consequence of dysfunction in olfactory cortex, not of lamina propria involvement in the olfactory bulb.³⁷ Similarly, the assumption that pathology spreads from the gut to the brain is unproven; it could be that pathophysiology in medullary autonomic control centers are driving GI pathology, or at least that there is a “vicious circle of injury.”³⁸

Future Directions

Our thesis is that PD is a uniquely human disease because of telencephalization and consequent bioenergetic and proteostatic burdens on subcortical structures³⁷ that have been “left behind” by human evolution. This stress makes these subcortical structures

particularly vulnerable to aging. Our model provides a compelling account of the range and synchronicity of motor and nonmotor symptoms in PD. It provides a ready explanation for the correlation between aSYN pathology and PD. Whereas it does not exclude the possibility that aSYN pathology propagates through synaptically coupled networks in the brain, it argues that this is not a primary driver of pathogenesis in PD. Last, the “telencephalization hypothesis” suggests that disease-modifying therapies for PD are most likely to come from a better understanding of the unique features of the human brain that drive pathogenesis, like axonal biology, synaptic function in neuromodulatory networks, and neuronal bioenergetics. It is tempting to speculate that there is also evolutionary grounding of other, uniquely human, neurodegenerative processes. Thus, Alzheimer’s disease has been seen as the “downside” of the evolution of the human parietal lobe, including the precuneus.⁹ By antagonistic pleiotropy, genetic, molecular, and cellular mechanisms may be contributive as well.³⁹ ■

Acknowledgments: D.J.S. acknowledges support from the JPB Foundation and NIH (NS047085). T.U. acknowledges support by grants (JSPS KAKENHI Grant Numbers: 17H03555 [to T.U.] and 16 K14572 [to T.U.]). S.G. acknowledges support from the Swedish Research Council-MH-3026 and HBP- Horizon 2020. We thank Ms. Emiko Wakatsuki, Tokyo Metropolitan Institute of Medical Science, for partially designing and editing of the figures.

References

1. Thompson RH, Ménard A, Pombal M, Grillner S. Forebrain dopamine depletion impairs motor behavior in lamprey. *Eur J Neurosci* 2008;27:1452–1460.
2. Collier TJ, Kanaan NM, Kordower JH. Ageing as a primary risk factor for Parkinson’s disease: evidence from studies of non-human primates. *Nat Rev Neurosci* 2011;12:359–366.
3. Sherwood CC, Bauernfeind AL, Bianchi S, Raghanti MA, Hof PR. Human brain evolution writ large and small. *Prog Brain Res* 2012; 195:237–354.
4. Donahue CJ, Glasser MF, Preuss TM, Rilling JK, Van Essen DC. Quantitative assessment of prefrontal cortex in humans relative to nonhuman primates. *Proc Natl Acad Sci U S A* 2018;115: E5183–E5192.
5. Gabi M, Neves K, Masseron C, et al. No relative expansion of the number of prefrontal neurons in primate and human evolution. *Proc Natl Acad Sci U S A* 2016;113:9617–9622.
6. Sousa AMM, Zhu Y, Raghanti MA, et al. Molecular and cellular reorganization of neural circuits in the human lineage. *Science* 2017; 358:1027–1032.
7. Gómez-Robles A, Hopkins WD, Schapiro SJ, Sherwood CC. Relaxed genetic control of cortical organization in human brains compared with chimpanzees. *Proc Natl Acad Sci U S A* 2015;112: 14799–14804.
8. Aiello LC, Wheeler P. The expensive-tissue hypothesis: the brain and the digestive system in human and primate evolution. *Curr Anthropol* 1995;36:199–221.
9. Bruner E, Jacobs HI. Alzheimer’s disease: the downside of a highly evolved parietal lobe? *J Alzheimers Dis* 2013;35:227–240.
10. Grillner S, Robertson B. The basal ganglia over 500 million years. *Curr Biol* 2016;26:1088–1100.

11. Redgrave P, Rodriguez M, Smith Y, et al. Goal-directed and habitual control in the basal ganglia: implications for Parkinson's disease. *Nat Rev Neurosci* 2010;11:760–772.
12. Grillner S, Robertson B, Stephenson-Jones M. The evolutionary origin of the vertebrate basal ganglia and its role in action selection. *J Physiol* 2013;591:5425–5431.
13. Matsuda W, Furuta T, Nakamura KC, et al. Single nigrostriatal dopaminergic neurons form widely spread and highly dense axonal arborizations in the neostriatum. *J Neurosci* 2009;29:444–453.
14. Nelson AB, Kreitzer AC. Reassessing models of basal ganglia function and dysfunction. *Annu Rev Neurosci* 2014;37:117–135.
15. Stephan H, Andy OJ. Quantitative comparative neuroanatomy of primates: an attempt at a phylogenetic interpretation. *Ann NY Acad Sci* 1969;167:370–387.
16. Bolam JP, Pissadaki EK. Living on the edge with too many mouths to feed: why dopamine neurons die. *Mov Disord* 2012;27:1478–1483.
17. Barger N, Hanson KL, Teffer K, Schenker-Ahmed NM, Semendeferi K. Evidence for evolutionary specialization in human limbic structures. *Front Hum Neurosci* 2014;8:277.
18. Benarroch EE. The amygdala: functional organization and involvement in neurologic disorders. *Neurology* 2015;84:313–324.
19. Sharma Y, Xu T, Graf WM, Fobbs A, et al. Comparative anatomy of the locus coeruleus in humans and non human primates. *J Comp Neurol* 2010;518:963–971.
20. Schoenemann PT. Evolution of the size and functional areas of the human brain. *Annu Rev Anthropol* 2006;35:379–406.
21. Surmeier DJ, Obeso JA, Halliday GM. Selective neuronal vulnerability in Parkinson disease. *Nat Rev Neurosci* 2017;18:101–113.
22. Reeve A, Simcox E, Turnbull D. Ageing and Parkinson's disease: why is advancing age the biggest risk factor? *Ageing Res Rev* 2014;14:19–30.
23. Zhou FM, Wilson CJ, Dani JA. Cholinergic interneuron characteristics and nicotinic properties in the striatum. *J Neurobiol* 2002;53:590–605.
24. Sulzer D, Surmeier DJ. Neuronal vulnerability, pathogenesis, and Parkinson's disease. *Mov Disord* 2013;28:41–50.
25. Grünewald A, Rygiel KA, Hepplewhite PD, Morris CM, Picard M, Turnbull DM. Mitochondrial DNA depletion in respiratory chain-deficient Parkinson disease neurons. *Ann Neurol* 2016;79:366–378.
26. Burbulla LF, Song P, Mazzulli JR, et al. Dopamine oxidation mediates mitochondrial and lysosomal dysfunction in Parkinson's disease. *Science* 2017;357:1255–1261.
27. Goedert M, Masuda-Suzukake M, Falcon B. Like prions: the propagation of aggregated tau and α -synuclein in neurodegeneration. *Brain* 2017;140:266–278.
28. Braak H, Del Tredici K, Rüb U, de Vos RA, Jansen Steur EN, Braak E. Staging of brain pathology related to sporadic Parkinson's disease. *Neurobiol Aging* 2003;24:197–211.
29. Uchihara T, Giasson BI. Probagation of alpha-synuclein pathology: hypotheses, discoveries and yet unresolved questions from experimental and human brain studies. *Acta Neuropathol* 2016;131:49–73.
30. Uchihara T. An order in Lewy body disorders: retrograde degeneration in hyperbranching axons as a fundamental structural template accounting for focal/multifocal Lewy body disease. *Neuropathology* 2017;37:129–149.
31. Foffani G, Obeso JA. A cortical pathogenic theory of Parkinson's disease. *Neuron* 2018;99:1116–1128.
32. Schrag A, Horsfall L, Walters K, Noyce A, Petersen I. Prediagnostic presentations of Parkinson's disease in primary care: a case-control study. *Lancet Neurol* 2015;14:57–64.
33. Diederich NJ, Stebbins G, Schiltz C, Goetz CG. Are patients with Parkinson's disease blind to blindsight? *Brain* 2014;137:1838–1849.
34. Kiehn O. Decoding the organization of spinal circuits that control locomotion. *Nat Rev Neurosci* 2016;17:224–238.
35. Corner MA, Schenck CH. Perchance to dream? Primordial motor activity patterns in vertebrates from fish to mammals: their prenatal origin, postnatal persistence during sleep, and pathological reemergence during REM sleep behavior disorder. *Neurosci Bull* 2015;31:649–662.
36. Ibarretxe-Bilbao N, Junque C, Marti MJ, et al. Olfactory impairment in Parkinson's disease and white matter abnormalities in central olfactory areas: a voxel-based diffusion tensor imaging study. *Mov Disord* 2010;25:1888–1894.
37. Greene JG. Causes and consequences of degeneration of the dorsal motor nucleus of the vagus nerve in Parkinson's disease. *Antioxid Redox Signal* 2014;21:649–667.
38. Garcia-Ruiz PJ, Espay AJ. Parkinson's disease: an evolutionary perspective. *Front Neurol* 2017;8:157.
39. Williams GC. Pleiotropy, natural selection, and the evolution of senescence. *Evolution* 1957;11:398–411.
40. Sherwood CC, Subiaul F, Zawadzki TW. A natural history of the human mind: tracing evolutionary changes in brain and cognition. *J Anat* 2008;212:426–454.
41. Stephenson-Jones M, Samuelsson E, Ericsson J, Robertson B, Grillner S. Evolutionary conservation of the basal ganglia as a common vertebrate mechanism for action selection. *Curr Biol* 2011;21:1081–1091.