


# Biomechanical Analysis of Two Types of Humerus Supracondylar Fracture Fixation in Anatomical Model\*

## *Análise biomecânica de dois tipos de fixação de fratura supracondiliana de úmero em modelo anatômico*

Marcos Ceita Nunes<sup>1</sup>  Ticiano Dozza Posser<sup>1</sup> Charles Leonardo Israel<sup>2</sup>  
Leandro de Freitas Spinelli<sup>2,3</sup> Luis Gustavo Calieron<sup>1</sup> Jung Ho Kim<sup>1</sup>

<sup>1</sup> Pediatric Orthopedic Service, Hospital São Vicente de Paulo, Passo Fundo, RS, Brazil

<sup>2</sup> Bioengineering Laboratory, Universidade de Passo Fundo, Passo Fundo, RS, Brazil

<sup>3</sup> Orthopedics and Traumatology Service, Hospital Santa Casa de Misericórdia de Porto Alegre, Porto Alegre, RS, Brazil

Address for correspondence Marcos Ceita Nunes, MD, Rua Uruguai, 2050, Passo Fundo, RS, Brasil. 99010-112

(e-mail: marcosceitanunes@yahoo.com.br; pesquisa2@hsvp.com.br).

Rev Bras Ortop 2019;54:261–267.

### Abstract

**Objective** To analyze the stability of humerus supracondylar fracture fixation with Kirschner wires comparing intramedullary and lateral (Fi), and two parallel lateral wires (FL) fixation in experimental models, to define which configuration presents greater stability.

**Methods** A total of 72 synthetic humeri were cross-sectioned to simulate the fracture. These bones were divided into two equal groups and the fractures were fixed with parallel Kirschner wires (FL) and with a lateral and intramedullary (Fi) wire. Then, the test specimens were subjected to stress load tests on a universal test machine, measured in Newtons (N). Each group was subdivided into varus load, valgus, extension, flexion, external rotation and internal rotation. An analysis of the data was performed comparing the subgroups of the FL group with their respective subgroups of the Fi group through the two-tailed t test.


**Results** The two-tailed t test showed that in 4 of the 6 evaluated conditions there was no significant statistical difference between the groups ( $p > 0.05$ ). We have found a significant difference between the group with extension load with a mean of 19 N (FL group) and of 28.7 N (Fi group) ( $p = 0.004$ ), and also between the groups with flexural load with the mean of the forces recorded in the FL group of 17.1 N and of 22.9 N in the Fi group ( $p = 0.01$ ).

**Conclusion** Fixation with one intramedullary wire and one lateral wire, considering loads in extension and flexion, presents greater stability when compared to a fixation with two lateral wires, suggesting similar clinical results.

### Keywords

- ▶ biomechanical phenomena
- ▶ epiphyses/injuries
- ▶ fracture fixation
- ▶ humeral fractures

\* Worked performed at the Hospital São Vicente de Paulo, Passo Fundo, RS, Brazil.

 Marcos Ceita Nunes's ORCID is <https://orcid.org/0000-0002-2307-8359>.



## Resumo

**Objetivo** Analisar através de ensaios mecânicos a estabilidade da fixação da fratura supracondiliana do úmero com dois fios de Kirschner, intramedular e lateral (Fi), comparada à fixação com dois fios laterais paralelos (FL) em modelos anatômicos, de forma a se definir qual configuração apresenta maior estabilidade.

**Métodos** Foram utilizados como corpos de prova 72 úmeros sintéticos, os quais foram seccionados transversalmente para simular a fratura. Estes ossos foram divididos em dois grupos iguais e as fraturas fixadas com dois fios de Kirschner paralelos (FL) e com um fio lateral e outro intramedular (Fi). Então os corpos de prova foram submetidos aos testes de carga em estresse em uma máquina de ensaio universal, medidos em Newtons (N). Cada grupo foi subdividido em carga em varo, em valgo, em extensão, em flexão, em rotação externa e em rotação interna. A análise dos dados foi realizada comparando os subgrupos do grupo FL, com seus respectivos subgrupos do grupo Fi através do teste t bicaudal.

**Resultados** O teste t bicaudal demonstrou que em 4 das 6 condições aplicadas não houve diferença estatística significativa entre os grupos ( $p > 0,05$ ). Encontramos uma diferença significativa entre os grupos com carga em extensão com uma média das maiores forças no grupo FL de 19 N e no grupo Fi de 28,7 N ( $p = 0,004$ ), e também entre os grupos com carga em flexão com a média de forças registradas no grupo FL de 17,1 N e no grupo Fi de 22,9 N ( $p = 0,01$ ).

**Conclusão** A fixação com fio intramedular e um fio lateral para cargas em extensão e flexão apresenta maior estabilidade quando comparada com a fixação com dois fios laterais paralelos, sugerindo resultados clínicos no mínimo semelhantes.

## Palavras-chave

- ▶ fenômenos biomecânicos
- ▶ epífises/lesões
- ▶ fixação de fratura
- ▶ fraturas do úmero

## Introduction

Supracondylar fracture is more common in the 4- to 7-year-old age group,<sup>1</sup> corresponding to two-thirds of children hospitalized for elbow trauma and to 30% of the fractures in this population.<sup>2</sup> Due to the particular anatomy of the elbow and to the ossification order in the growth nuclei, the supracondylar fracture virtually always behaves in extension patterns, with posterior medial, posterior lateral and flexion displacements. The displacement degree is defined by the direction of the deforming force, by the position of the limb during the trauma, and by the magnitude of this force.<sup>3,4</sup>

Gartland classified this fracture in three types according to the displacement degree; it is agreed that grade 1 fractures require conservative treatment.<sup>5</sup> Some papers describe conservative techniques, that is, reduction and immobilization, in grade 2 and 3 fractures.<sup>6</sup> However, many authors describe reduction and percutaneous fixation as the gold standard for displaced fractures.<sup>7,8</sup> As such, there is no consensus as to the best positioning of Kirschner wires in the stabilization of this fracture.<sup>9</sup> Fixation with a cross-wired configuration provides better stability, but there is a risk of iatrogenic injury of the ulnar nerve. The configuration with two lateral wires showed lower stability of the crossed wires and lower incidence of ulnar nerve lesions; in addition, it is technically more challenging, since the space for wire placement both in divergent and parallel directions is small. However, both configurations have similar clinical results.<sup>10-13</sup>

In 1991, Bertol et al<sup>14</sup> published the technique of supracondylar fractures fixation with posterior medial deviation using an intramedullary Kirschner wire inserted just lateral

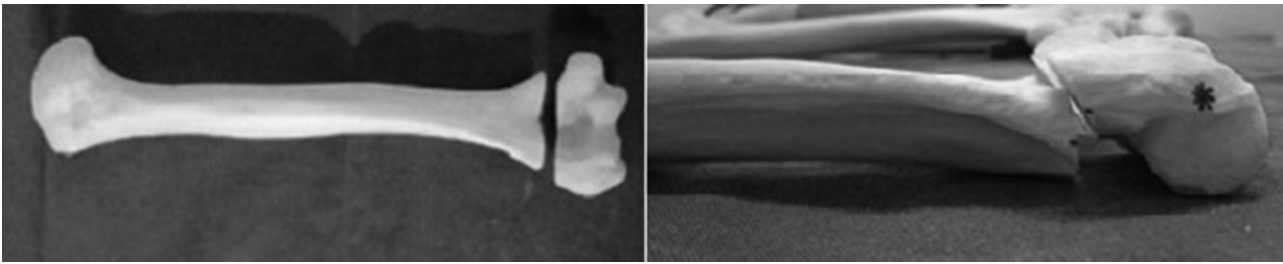
to the olecranon and another one lateral at the epicondyle entry, in a presumably easier technique, since it optimizes the lateral spine space.

Numerous biomechanical studies compare different positional configurations of Kirschner wires in the stabilization of supracondylar humerus fracture,<sup>13,15,16</sup> but there are no reports analyzing the configuration with an intramedullary and a lateral wire. The present study aims to compare fixation techniques using an intramedullary wire or two parallel lateral wires.

## Materials and Methods

The test specimens of the present study were 72 synthetic humeri (model 3022B – left humerus with medullary canal and spongy material) (Nacional Ossos, Jaú, SP, Brazil), which were equally cross-sectioned, parallel to the articular surface in the coronal plane, with a distal guided saw; the section passed into the olecranon fossa at 3 centimeters from the distal humeral edge, simulating a supracondylar fracture (► Fig. 1). The cross-section was selected because 80% of the supracondylar fractures have a transverse pattern in lateral radiographs<sup>17</sup>; moreover, the fracture obliquity causes instability.<sup>18</sup>

The sectioned synthetic humeri were divided into two groups according to fixation: a group fixed with two lateral wires (FL) and a group with fixed with an intramedullary wire and a lateral wire (Fi). All of the models were submitted to the anatomical reduction and fixation with 2.0 mm Kirschner wires. Each group had a standard fixation model to assure that the fixations were identical. In the FL group, the fixation was performed with 2 2.0 mm Kirschner wires



**Fig. 1** Test specimens: cross-section of a synthetic humerus at its distal portion, through the olecranon fossa at 3 centimeters from the distal edge of the bone, simulating a supracondylar fracture.

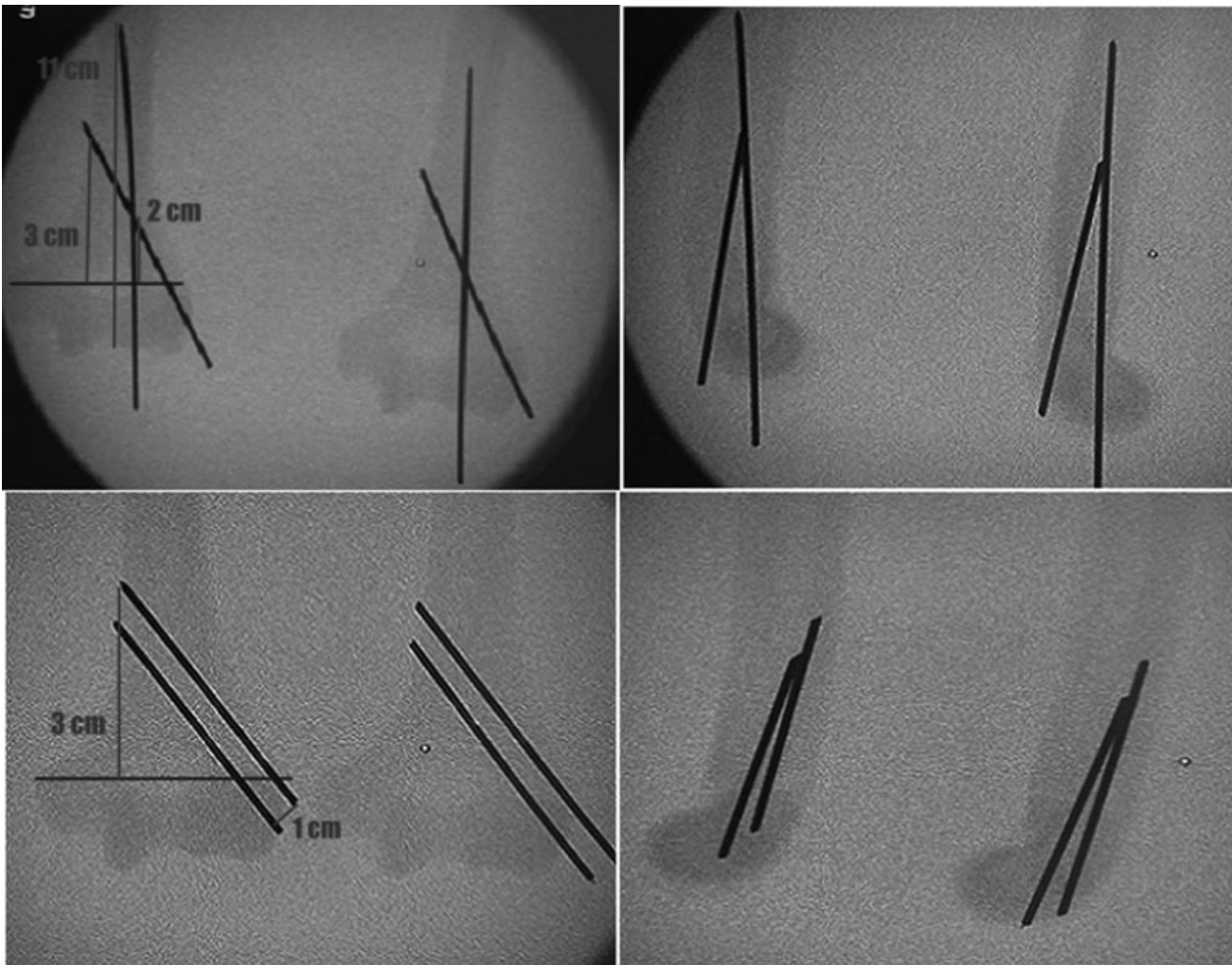
entering laterally at the epicondyle, with the most distal wire at the lower edge of the lateral epicondyle and the proximal wire 1 cm above the former, parallel to the axis of the humeral shaft, fixed on the opposite cortical layer, 3 cm above the fracture line.

In the Fi group, the fixation was also performed with 2 2.0 mm Kirschner wires, with the 1<sup>st</sup> wire entering 2 mm lateral to the lateral border of the trochlea, at the trochlear groove, thus becoming intramedullary and introduced up to the transition between the middle third and the distal third of the humerus, 11 cm from the distal humeral end, and the

2<sup>nd</sup> wire inserted in the center of the lateral epicondyle at a 30° angle to the humeral axis, crossing the 1<sup>st</sup> wire at 2 cm from the fracture line and fixed in the opposite cortical layer at 3 cm from the fracture line.

Fixations were aided by a perforator and fluoroscopy. All of the specimens were compared to their respective standardized models by fluoroscopy, complying with the previously mentioned fixation criteria, and assuring the similarity between them (→Fig. 2).

Specimens that did not comply with the fixation criteria were excluded. After the fixation, the humeri from both groups



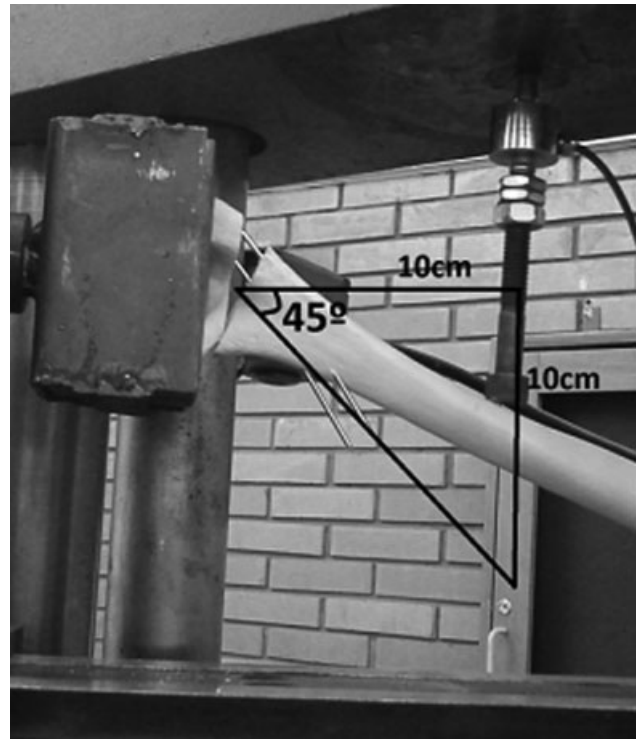
**Fig. 2** Test specimens compared with their respective standardized models at fluoroscopy, complying with the fixation criteria and ensuring the similarity between them.

were sent to the Engineering Laboratory, where, together with a collaborating engineer, each group was divided into subgroups according to the performed load tests: subgroup 1, varus load; subgroup 2, valgus load; subgroup 3, load in extension; subgroup 4, load in flexion; subgroup 5, load in internal rotation; and subgroup 6, load in external rotation.

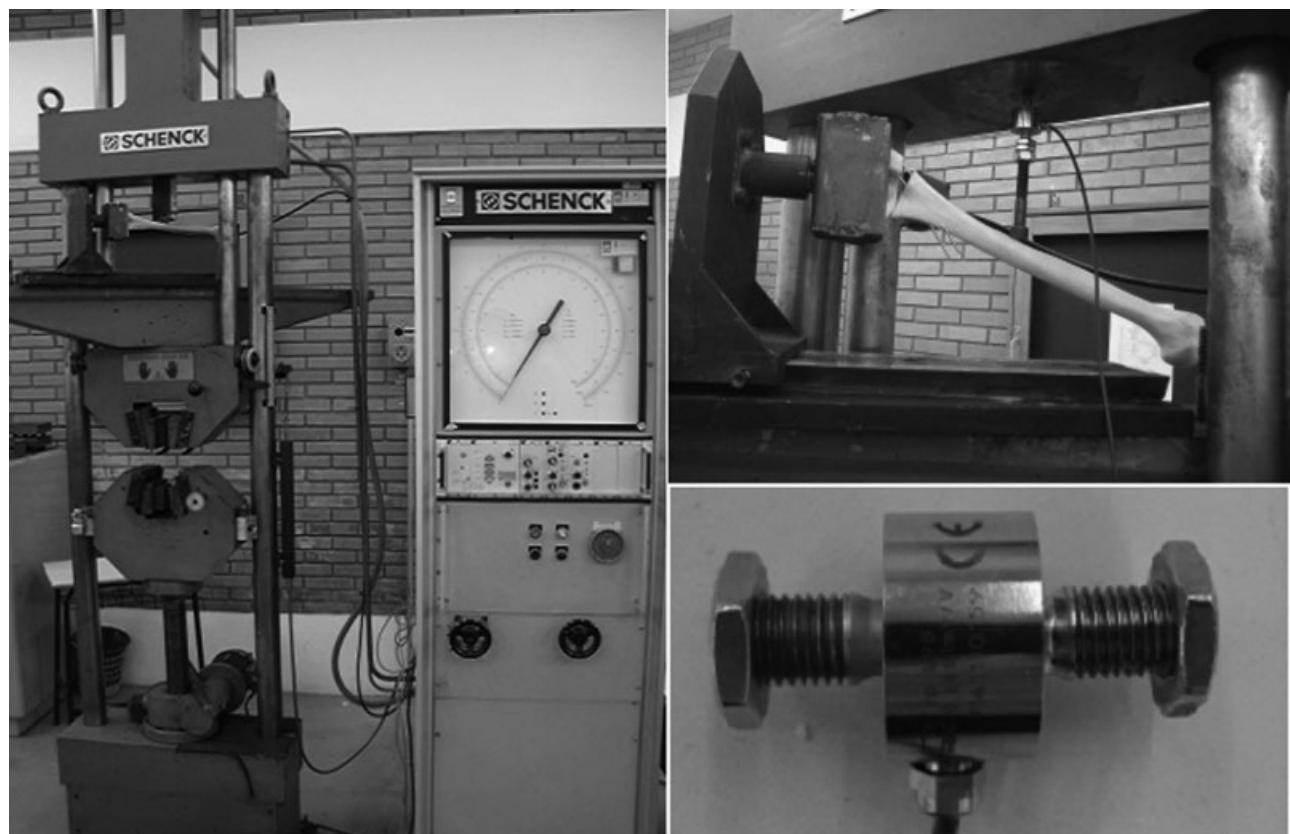
Load tests were performed on a universal tensile testing machine, model UPM 200 (3022B, left humerus with medullary canal and spongy material, Nacional Ossos, Jaú, SP, Brazil), and an HBM U9B (3022B, left humerus with medullary canal and spongy material, Nacional Ossos, Jaú, SP, Brazil) load cell (20KN = 1mV/V). The test measures the load generated in Newtons (N) during the continuous displacement promoted by the traction test machine at a speed of 1 mm/s, with a maximum established displacement of 10 cm, which promotes an angulation of up to 45° in the specimen with rotation fulcrum at the fracture line (► Fig. 3).

A support for the anatomical coupling of the distal humerus was developed, allowing the application and measurement of loads in bone models at a point 10 cm proximal to the fracture line up to a 45° of angulation and/or material failure (► Fig. 4). A mechanism to create rotational forces from the load established by the tensile testing machine was also developed (► Fig. 5). Rotational loads were applied until the breakage of the bone models.

The data generated by the load cell in each bone model show that, during displacement, the force in N initially increases until it reaches a plateau (which is related to the higher recorded forces); next, the applied force decreases,

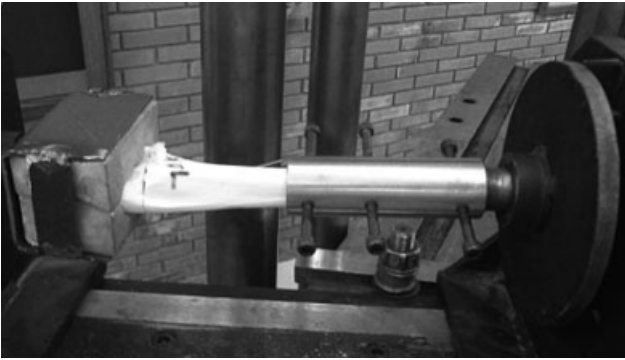


**Fig. 4** Applied and measured loads on the specimens, at a point 10 cm proximal to the fracture line, until reaching a 45° angle and/or material failure.



**Fig. 3** Universal tensile testing machine model UPM 200 and an HBM U9B load cell (20 KN = 1 mV/V)





**Fig. 5** Mechanism for the application of rotational loads.

which is related to the bone model breakage and/or to a 45° displacement. In this way, the force in N when reaching this plateau was defined as the variable to be analyzed, that is, the maximum force recorded during the displacement, at the end of the linear region of the graph.

The sample size was calculated in the PEPI (Programs for Epidemiologists) software, version 4.0, and based on the study by Bloom et al.<sup>19</sup> For a significance level of 5%, 90% power, and an estimated standard deviation [SD] of 3.5 with a mean difference of 8N, a minimum total of 6 parts per subgroup was obtained, totaling 36 per group.

The data analysis was performed with Microsoft Office Excel 2010 software (Microsoft Corporation, Redmond, WA, USA), comparing FL subgroups to their respective Fi subgroups through two-tailed t tests. The present study does not have conflicts of interests.

## Results

Loading tests results to compare the stability of the two wire configurations are represented in N in ▶Table 1. The two-tailed t test showed that there was no significant statistical difference in 4 of the 6 loads applied ( $p < 0.05$ ) (▶Table 1).

In the bone models submitted to the varus load, the mean of the highest recorded forces during displacement in FL group was of 28.7 N, with a SD of 3.5 N. In the Fi group, the mean force was 30.7 N, with a SD of 4.9 N. Thus, the two-

**Table 1** Mechanical load force and direction data

	Group (FL)	Group (Fi)	Two-tailed t test
Varus (N)	28.7 ± 3.5	30.7 ± 4.9	$p = 0.230$
Valgus (N)	20.6 ± 5.2	22.9 ± 3.4	$p = 0.240$
Extension (N)	19.0 ± 3.4	28.7 ± 4.0	$p = 0.004$
Flexion (N)	17.1 ± 1.2	22.9 ± 4.0	$p = 0.015$
Internal Rotation (N)	12.55 ± 1.2	11.7 ± 2.6	$p = 0.256$
External Rotation (N)	11.2 ± 1.8	11.6 ± 1.0	$p = 0.292$

Abbreviations: Fi, fixation with intramedullary and lateral wires; FL, fixation with two lateral wires; N, Newtons.

tailed t test did not reveal a statistically significant difference between these groups ( $p = 0.23$ ) (▶Fig. 6).

In the models submitted to valgus load, the mean of the highest recorded forces in the FL group was of 20.6 N, with a SD of 5.2 N. In the Fi group, the mean value was of 22.9 N, with a SD of 3.4 N. As with the varus load, the two-tailed t test did not reveal a statistically significant difference between the groups ( $p = 0.24$ ) (▶Fig. 6).

In addition, there was no statistically significant difference between the groups at the load tests in internal and external rotation ( $p = 0.25$  and  $p = 0.24$ , respectively) (▶Fig. 6).

There was a statistically significant difference between the 2 groups in the extension load tests ( $p = 0.004$ ), with a mean of the highest recorded forces in the FL group of 19.0 N and a SD of 3.4 N, whereas the Fi group presented a value of 28.7 Newtons and a SD of 4.0 N (▶Fig. 6). Thus, during the constant displacement established by the test machine, a greater force was generated and recorded by the load cell in the Fi group compared with the FL group. As such, we can also suggest that the configuration with an intramedullary wire and a lateral wire provides greater stability in extension loads when compared with the configuration with two parallel lateral wires.

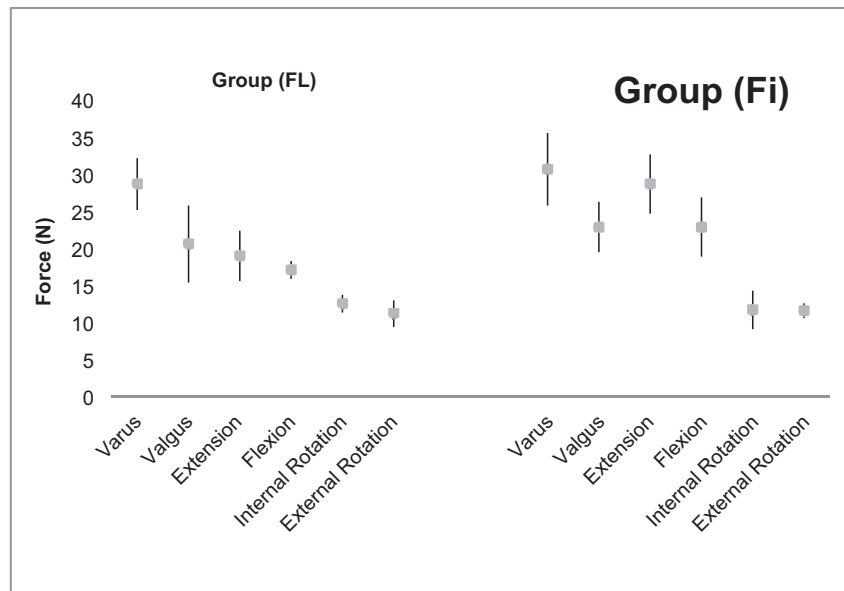
Models submitted to the flexion load also showed a significant statistical difference between the groups ( $p = 0.01$ ), with the mean of the highest recorded forces in the FL group of 17.1 N and a SD of 1.2 N, and a mean value of 22.9 N and a SD of 4 N in the Fi group (▶Fig. 6).

## Discussion

The main goals of the treatment of displaced supracondylar fractures are anatomic reduction and a secure fixation with no angular deformities. This is usually achieved with closed reduction and percutaneous fixation.<sup>20–22</sup> Fixation requires full attention to the clinical and radiological examination of the contralateral elbow, in addition to true orthogonal projections at fluoroscopy and the consideration of well-described radiographic parameters for total correction of the deformity.<sup>23</sup> Defective consolidations are also related to inadequate fixations and technical errors during the procedure.<sup>19</sup>

Several biomechanical studies have demonstrated that the cross-wire fixation has a greater rotational stability than the lateral wiring fixations,<sup>15</sup> but with a higher risk of iatrogenic injury of the ulnar nerve.<sup>12</sup> Bloom et al<sup>16</sup> reported that three lateral divergent pins provides the same resistance as two crossed wires, which are more resistant than two lateral wires, but, in most cases, there is not enough space for lateral pinning.<sup>19</sup> In a prospective randomized clinical trial comparing lateral and crossed fixation techniques for the treatment of type III humeral supracondylar fractures, Kocher et al<sup>11</sup> did not find a significant difference between both groups regarding radiographic and clinical outcome. In another prospective randomized study, Blanco et al<sup>24</sup> found no significant radiological differences between crossed and lateral wiring fixation.

Our study shows that the technique with intramedullary wire presents a greater resistance under flexion and extension loads than the technique with lateral wires; at other loads, the results are similar. In the former technique, the first step after



**Fig. 6** Graphic representation of test results of loads in varus, valgus, extension and flexion and internal and external rotation.

achieving a suitable reduction is the introduction of the intramedullary wire,<sup>14</sup> which blocks the forces in axial direction, mainly flexion and extension, safely allowing the correction of the remaining rotational deformities, that is, this technique tolerates a rotational adjustment after the precise reduction in the axial direction, which is not possible with lateral wiring. As such, the intramedullary wire fixation facilitates anatomical reduction, which maximizes the stability of all fixation configurations.<sup>19</sup> In addition, intramedullary wire fixation maintains a greater lateral space for wire placement.

Since the clinical results of the two crossed wires technique are similar to those obtained with two lateral wires,<sup>1,24–26</sup> we can assume that, according to the present mechanical study, the clinical results of the fixation with an intramedullary wire are equivalent to those provided by these techniques; however, a randomized clinical trial is required to confirm this assumption.

Some limitations of the present study should be recognized. Although the use of synthetic models for mechanical analysis of fracture reduction techniques is common in the literature, these investigations do not consider the variability in fracture patterns nor the anatomy with the surrounding periosteum that may contribute to fragment stability.<sup>15,27</sup> Furthermore, the physiological loads acting on the elbow are certainly more complex than the single axis of the load test directions used in the present study. In addition, the pins were placed in an ideal situation, without considering the difficulty of intraoperative insertion, which cannot be simulated. The design of the present study does not allow direct comparisons of the applied loads in models with organic bones, allowing only the comparison between the fixation techniques for these fractures.

## Conclusion

In the present study, the intramedullary wire fixation provides a greater stability under flexion and extension loads

when compared with the lateral wiring fixation, with similar results under other applied loads, suggesting acceptable clinical results, as already proven by Bertol et al.<sup>14</sup> As such, it is an excellent option for the configuration of Kirschner wires when treating these fractures.

## Conflicts of interests

The authors have no conflicts of interests to declare.

## References

- Cheng JC, Shen WY. Limb fracture pattern in different pediatric age groups: a study of 3,350 children. *J Orthop Trauma* 1993;7(01):15–22
- Kasser JR, Beaty JH. Supracondylar fractures of the distal humerus. In: Beaty JH, Kasser JR, Wilkins KE, Rockwood CE, eds. *Rockwood and Wilkins' fractures in children*. 6th ed. Philadelphia: Lippincott Williams and Wilkins; 2006:543–89
- Omid R, Choi PD, Skaggs DL. Supracondylar humeral fractures in children. *J Bone Joint Surg Am* 2008;90(05):1121–1132
- Mahan ST, May CD, Kocher MS. Operative management of displaced flexion supracondylar humerus fractures in children. *J Pediatr Orthop* 2007;27(05):551–556
- Barton KL, Kaminsky CK, Green DW, Shean CJ, Kautz SM, Skaggs DL. Reliability of a modified Gartland classification of supracondylar humerus fractures. *J Pediatr Orthop* 2001;21(01):27–30
- Izadpanah M. [Closed treatment of supracondylar fractures of the humerus: a modification of Blounts technique (author's transl)]. *Arch Orthop Unfallchir* 1973;77(04):348–358
- Wilkins K, Beaty J. *Fractures in children*. 4th ed. Philadelphia: Lippincott-Raven; 1996
- Flynn JC, Zink WP. Fractures and dislocations of the elbow. In: MacEwen GD, Kasser JR, Heinrich SD, eds. *Pediatric fractures. A practical approach to assessment and treatment*. Baltimore: Williams & Wilkins; 1993:133–64
- Kasser JR, Beaty JH. Supracondylar fractures of the distal humerus. In: Beaty JH, Kasser JR, Wilkins KE, Rockwood CE, eds. *Rockwood and Wilkins' fractures in children*. 5th ed. Philadelphia: Lippincott Williams and Wilkins; 2004:594–95

- 10 Topping RE, Blanco JS, Davis TJ. Clinical evaluation of crossed-pin versus lateral-pin fixation in displaced supracondylar humerus fractures. *J Pediatr Orthop* 1995;15(04):435-439
- 11 Kocher MS, Kasser JR, Waters PM, Bae D, Snyder BD, Hresko MT, et al. Lateral entry compared with medial and lateral entry pin fixation for completely displaced supracondylar humeral fractures in children. A randomized clinical trial. *J Bone Joint Surg Am* 2007;89(04):706-712
- 12 Rasool MN. Ulnar nerve injury after K-wire fixation of supracondylar humerus fractures in children. *J Pediatr Orthop* 1998;18(05):686-690
- 13 Brauer CA, Lee BM, Bae DS, Waters PM, Kocher MS. A systematic review of medial and lateral entry pinning versus lateral entry pinning for supracondylar fractures of the humerus. *J Pediatr Orthop* 2007;27(02):181-186
- 14 Bertol P, Monteggia GM, Paula MD. Fixação percutânea das fraturassupracondilianas do úmero na criança. *Rev Bras Ortop* 1991;26(03):48-51
- 15 Larson L, Firoozbakhsh K, Passarelli R, Bosch P. Biomechanical analysis of pinning techniques for pediatric supracondylar humerus fractures. *J Pediatr Orthop* 2006;26(05):573-578
- 16 Bloom T, Robertson C, Mahar A, Pring M, Newton PO. Comparison of supracondylar humerus fracture pinning when the fracture is not anatomically reduced. In: *The Annual Meeting of the Pediatric Orthopaedic Society of North America*, Hollywood, FL, 2007 May 23-26
- 17 Nand S. Management of supracondylar fractures in children. *Int Surg* 1972;177:203-209
- 18 Bahk MS, Srikumaran U, Ain MC, Erkula G, Leet AI, Sargent MC, et al. Patterns of pediatric supracondylar humerus fractures. *J Pediatr Orthop* 2008;28(05):493-499
- 19 Bloom T, Robertson C, Mahar AT, Newton P. Biomechanical analysis of supracondylar humerus fracture pinning for slightly malreduced fractures. *J Pediatr Orthop* 2008;28(07):766-772
- 20 Kurer MH, Regan MW. Completely displaced supracondylar fracture of the humerus in children. A review of 1708 comparable cases. *Clin Orthop Relat Res* 1990;(256):205-214
- 21 Royce RO, Dutkowsky JP, Kasser JR, Rand FR. Neurologic complications after K-wire fixation of supracondylar humerus fractures in children. *J Pediatr Orthop* 1991;11(02):191-194
- 22 Ito N, Eto M, Maeda K, Rabbi ME, Iwasaki K. Ultrasonographic measurement of humeral torsion. *J Shoulder Elbow Surg* 1995;4(03):157-161
- 23 Pring M, Rang M, Wenger D. Elbow-distal humerus. In: Pring M, Rang M, Wenger D, eds. *Rang's Children's Fractures*. Philadelphia, PA: Lippincott Williams & Wilkins; 2005:95-118
- 24 Blanco JS, Gaston G, Cates T, Busch MT, Schmitz ML, Schrader T, et al. Lateral pin versus crossed pin fixation in type 3 supracondylar humerus fractures: a randomized prospective study. In: *The Annual Meeting of the Pediatric Orthopaedic Society of North America*, Hollywood, FL, 2007 May 23-26.
- 25 Foead A, Penafort R, Saw A, Sengupta S. Comparison of two methods of percutaneous pin fixation in displaced supracondylar fractures of the humerus in children. *J Orthop Surg (Hong Kong)* 2004;12(01):76-82
- 26 Gordon JE, Patton CM, Luhmann SJ, Bassett GS, Schoenecker PL. Fracture stability after pinning of displaced supracondylar distal humerus fractures in children. *J Pediatr Orthop* 2001;21(03):313-318
- 27 Schwartz A, Oka R, Odell T, Mahar A. Biomechanical comparison of two different periarticular plating systems for stabilization of complex distal humerus fractures. *Clin Biomech (Bristol, Avon)* 2006;21(09):950-955