

Chronic restraint stress induces esophageal fibrosis with enhanced oxidative stress in a murine model

MAIMAITI YISIREYILI^{1,2}, WUBULIKASIMU WULAMU^{1,2}, AIKEBAIER AILI^{1,2}, YILIANG LI², AZIGULI ALIMUJIANG³, ALIYEGULI AIPIRE¹, MAIMAITIAILI AIZEZI⁴, WEIMIN ZHANG⁴, ZHENGYI CAO², ABULAJIANG MIJITI² and KELIMU ABUDUREYIMU^{1,2}

¹Research Institute of General and Minimally Invasive Surgery; Departments of ²Minimally Invasive Surgery, Hernia and Abdominal Wall Surgery, ³Obstetrics and Gynecology Clinic, and ⁴Cardiac Surgery, People's Hospital of Xinjiang Uygur Autonomous Region, Urumqi, Xinjiang 830001, P.R. China

Received August 8, 2018; Accepted April 11, 2019

DOI: 10.3892/etm.2019.7669

Abstract. Although the underlying mechanism of stress remains unknown, it has been associated with the pathophysiology of gastroesophageal reflux diseases, the development of which appear to be accelerated by oxidative stress and fibrosis. The aim of the current study was to investigate the effect of chronic restraint stress on esophageal oxidative stress and fibrosis, as well as the impact of oxidative stress in a murine model whereby 8-week old C57BL/6J male mice were subjected to intermittent chronic restraint stress for a two-week period. The current study demonstrated that chronic restraint stress significantly reduced the body weight of mice compared with the control group. Although chronic restraint stress did not significantly alter the levels of triglycerides or cholesterol, free fatty acid concentration was significantly increased compared with the control group. Furthermore, chronic restraint stress significantly upregulated the expression levels of several fibrotic biomarkers including collagen type I, transforming growth factor β -1, α -smooth muscle actin and SMAD-3 compared with the control group. In addition, the expression levels of the reactive oxygen species (ROS) NADPH oxidase-4 and malondialdehyde were significantly increased, while the expression levels of nuclear factor erythroid 2-related factor 2 and heme oxygenase-1 were significantly decreased in esophageal tissue from mice in the chronic restraint stress group compared with the control group. In conclusion, chronic restraint stress may induce esophageal fibrosis by

accumulating ROS and increasing fibrotic gene expression in a murine model.

Introduction

Stress is triggered when various psychological, physiological or environmental stressors induce a state of threatened homeostasis (1). Stress has been identified as a risk factor in 75-90% of all diseases, including those that lead to morbidity and mortality (2). The production of reactive oxygen species (ROS), which are neutralized by enzymatic and non-enzymatic anti-oxidant defense mechanisms, has been recognized as a key mechanism of stress (3). Among the several types of stress (including acute and episodic acute), chronic stress can affect the balance between the production and scavenge of ROS in cells, thereby disrupting metabolic regulation and causing oxidative damage (4). Chronic stress can be classified into several types (including restraint stress and chronic heterotypic stress), with some leading to oxidative stress in several tissues, including the brain, lungs, heart, kidney and liver (5-8).

Gastroesophageal reflux associated tissue fibrosis can lead to esophageal stiffness, reduced esophageal compliance, increased smooth muscle mass and reduced esophageal diameter, leading to smooth muscle dysfunction, esophageal strictures and ultimately a decreased quality of life (9). Some studies have demonstrated that chronic stress can regulate the expression of gene-regulating anti-oxidant systems and NADPH oxidase (NOX), a major driver of ROS production in various types of cells (10,11). NOX-induced ROS have been identified as main sources of oxidative stress, which can accelerate the progression of various fibrotic diseases, including skin fibrosis (12), idiopathic pulmonary fibrosis (13), liver fibrosis (14), cardiovascular fibrosis (15) and kidney fibrosis (16).

Previous studies reported that the psychological-induced oxidative stress can be observed in different cells or tissues, including white adipose and intestinal tissues (17,18). Given the lack of research on esophageal fibrosis, the aim of the current study was to investigate the effect of chronic stress-induced esophageal fibrosis using a chronic restraint stress mouse model.

Correspondence to: Professor Kelimu Abudureyimu, Department of Minimally Invasive Surgery, Hernia and Abdominal Wall Surgery, People's Hospital of Xinjiang Uygur Autonomous Region, 91 Tianchi Road, Urumqi, Xinjiang 830001, P.R. China
E-mail: klm6075@163.com

Key words: stress, oxidative stress, anti-oxidative proteins, fibrotic biomarkers

Materials and methods

Experimental animals. A total of 30 male C57BL/6J mice (age, 8 weeks; weight, 25.6±2.52 g) were obtained from the Animal Center of Xinjiang Medical University (Urumqi, China) and used in subsequent experiments. Mice were placed in cages and housed in a viral-pathogen-free facility at the Research Institute of Uygur Pharmaceuticals (Urumqi, China) under standard conditions (temperature, 21–25°C and humidity, 50±5%) with a 12 h light/dark cycle. All mice received free access to water and a normal chow diet (Teklad Diet; 18% fat, 24% protein, 58% carbohydrates). All animal experiments were approved by the Animal Care and Use Committee of the People's Hospital of Xinjiang Uygur Autonomous Region (protocol no. KY201803703), and all experimental procedures complied with the Guidelines for the Care and Use of Laboratory Animals published by the National Institute of Health.

Chronic restraint stress protocol. Mice were randomly divided into two groups: A control and a chronic restraint stress group. Mice in the control group were housed in the individual cages and were left undisturbed. Mice in the chronic restraint stress group were subjected to restraint stress using a ventilated plastic 50 ml tube that allowed for a close fit to mice. Subsequently, mice were submitted to immobilization stress for 2 h per day for period of 14 consecutive days using a self-made restraint device (a 50 ml centrifugal tube with a number of ventilation holes ~5 mm in diameter and a small hole for the tail) (17,18). During the stress period, mice were not allowed access to food and water. Following chronic restrained stress, mice were maintained in individual cages and allowed free access to food and water. Body weight and food intake were monitored every two days during the stress period.

Sample collection. All mice underwent a 16–18 h fasting period and were euthanized by intraperitoneal injection of 150 mg/kg sodium pentobarbital. Blood samples were collected from the inferior vena cava for biological analysis. Esophageal tissue samples were collected to examine chronic restraint stress-induced pathology, as well as the expression levels of specific biological markers.

Histological analysis. Esophageal tissue was collected, weighed, fixed in 10% formalin for 24 h at room temperature and dehydrated by a descending series of ethanol at room temperature for 4 h. Tissue samples were embedded in paraffin and cut into 4- μ m-thick sections. Tissue sections were subsequently stained (all at room temperature for ~2.5 h) with hematoxylin and eosin (H&E), Sirius red or Masson's trichrome (MT) and observed under a light microscope (magnification, x200) and imaged using a digital camera (Eclipse E200; Nikon Corporation). Staining was observed in 10 randomly selected fields and analyzed using Adobe Photoshop (Adobe, Inc.) and ImageJ (version 1.62; National Institutes of Health). Histological sections were examined for stress-induced inflammatory changes and scored by a 'blinded' observer for three parameters (19): i) Epithelial damage (0, normal morphology; 1, mild surface lifting; 2, intraepithelial separation and surface lifting; and 3, epithelial cell loss to basal cell layer or deeper); ii) submucosal edema (0, normal; 1, mild

focal edema; 2, moderate diffuse edema; and 3, severe edema); iii) submucosal inflammation (0, 0–5/high power field (HPF); 1, 5–10/HPF; 2, 10–15/HPF; 3, \geq 15/HPF). Each individual score represented the mean of the three sections.

Immunohistochemistry. The streptavidin-biotinylated peroxidase complex method was performed as previously described (17,18). Briefly, esophageal tissue sections were deparaffinized in xylene and rehydrated with a descending ethanol series at room temperature. Endogenous peroxidase activity was inhibited using 0.3% H₂O₂ in methanol for 10 min in room temperature. Samples were then rinsed with PBS and incubated with 10% goat normal serum (cat. no. 414322F; Nichirei Biosciences, Inc.) for 30 min at room temperature. Sections were then treated with the following primary antibodies at 4°C overnight: NAPDH oxidase 4 (Nox4; cat. no. ab195524; 1:100; Abcam), malondialdehyde (MDA; cat. no. ab6463; 1:100; Abcam), nuclear factor erythroid 2-related factor 2 (Nrf-2; cat. no. ab62352; 1:100; Abcam), heme oxygenase 1 (HO-1; cat. no. ab13248; 1:100; Abcam), collagen type I (cat. no. ab34710; 1:100; Abcam), transforming growth factor β -1 (TGF- β -1; cat. no. sc-130348; 1:100; Santa Cruz Biotechnology, Inc.), α -smooth muscle actin (SMA; cat. no. A5228; 1:100; Sigma-Aldrich; Merck KGaA), SMAD-3 (cat. no. #8685; 1:100; Cell Signaling Technology, Inc.) and F4/80 (cat. no. ab240946; 1:100; Abcam). Sections were subsequently incubated with horseradish peroxidase (HRP)-conjugated anti-rabbit IgG (1:200; cat. no. 414181F; Nichirei Biosciences, Inc.) or HRP-conjugated anti-mouse IgG secondary antibodies (1:200; cat. no. 414191F; Nichirei Biosciences, Inc.) at room temperature for 30 min. Samples were then rinsed with PBS and treated with peroxidase-conjugated streptavidin (Nichirei Biosciences, Inc.) at 37°C for 30 min. Tissue sections were subsequently stained with 3,3'-diaminobenzidine tetra-hydrochloride (DAB; Sigma-Aldrich; Merck KGaA) with 0.03% H₂O₂ at room temperature for 15 min to visualize the localization of Nox4, MDA, Nrf-2, HO-1, collagen type I, TGF β -1, α -SMA and SMAD-3. esophageal tissue sections were counterstained with methylene green, observed under a light microscope (magnification, x200) and imaged using a digital camera (Eclipse E200; Nikon Corporation). Nox4, MDA, Nrf-2, HO-1, collagen type I, TGF β -1, α -SMA and SMAD-3 positive cells were observed in 10 randomly selected fields/section and analyzed using Adobe Photoshop (Adobe, Inc.) and quantified using ImageJ (version 1.45S; National Institutes of Health).

Reverse transcription-quantitative PCR (RT-qPCR). Total RNA was extracted from esophageal tissues using TRIzol® reagent (Invitrogen; Thermo Fisher Scientific, Inc.). Total RNA (1 μ g) was then reverse transcribed into cDNA using the RT system (Qiagen GmbH) in accordance with the manufacturer's protocol and qPCR was subsequently performed under the following thermocycling conditions: Initial denaturation for 2 min at 95°C, followed by 40 cycles for 12 sec at 95°C and 60 sec at 60°C. The Bio-Rad CFX96 RT-PCR Detection System (Bio-Rad Laboratories, Inc.) and Power SYBR Green PCR Master mix (Applied Biosystems; Thermo Fisher Scientific, Inc.) were utilized for PCR. The primer pairs used for qPCR are presented in Table I. Serial dilutions of a control

Table I. Primer sequences used in reverse transcription-quantitative PCR.

Gene	Primer sequence (5'-3')	Size (bp)
Nox4	F: CACCTCTGCCTGCTCATTG R: AGTTGAGGTTTCAGGACAGATGC	153
Nrf-2	F: CGAGATATACGCAGGAGAGGTA AGA R: GCTCGACAATGTTCTCCAGCTT	79
HO-1	F: CAGCCCCACCAAGTTCAAAC R: AGGCGGTCTTAGCCTCTTCTG	101
Collagen type I	F: GGAATGAAAGGGACACAGAGG R: TAGCACCATCATTTCCACGA	197
TGF- β 1	F: GGACTCTCCACCTGCAAGAC R: GACTGGCGAGCCTTAGTTTG	100
SMAD-3	F: CATCGAGCCCCAGAGCAATA R: GTGGTTCATCTGGTGGTCACT	88
α -SMA	F: TGCTGACAGAGGCACCACTGAA R: CAGTTGTACGTCCAGAGGCATA	138
β -actin	F: TATTGGCAACGAGCGGTTTC R: ATGCCACAGGATTCCATACCC	75

F, forward; R, reverse; Nox4, NAPDH oxidase 4; Nrf-2, nuclear factor erythroid 2-related factor 2; HO-1, heme oxygenase 1; TGF- β 1, transforming growth- β 1; α -SMA, α -smooth muscle actin.

cDNA sample were taken and used as the standard curve for each reaction. mRNA levels were quantified using the $2^{-\Delta\Delta C_q}$ method (20) and normalized to the internal reference gene β -actin. Each experiment was performed in triplicate.

Western blot analysis. Total protein was extracted from esophageal tissue (~30 mg) using lysis buffer [65 mmol/l Tris-HCl (pH 6.8), 3.3% SDS, 10% glycerol, 2.2% bromophenol blue]. Protein concentration was subsequently determined using a BCA protein assay kit (Pierce; Thermo Fisher Scientific, Inc.). Equal quantities of protein (50 μ g) were separated via SDS-PAGE on a 10-15% polyacrylamide gel. The separated proteins were transferred onto polyvinylidene difluoride membranes and blocked for 1 h at room temperature with 5% bovine serum albumin (cat. no. 10735078001; Sigma-Aldrich; Merck KGaA) in Tris-buffered saline containing Tween[®]-20 (TBS-T). Membranes were washed with TBS-T, and incubated with the following primary antibodies (all, 1:1,000): Nrf-2, phosphoNrf-2 (cat. no. ab76026; 1:100; Abcam), Kelch-like ECH-associated protein 1 (keap-1; cat. no. PAL648Mu01; Cloud-Clone Corp.), HO-1, collagen type I, TGF β -1, α -SMA, SMAD-3 and normalized to proliferating cell nuclear antigen (cat. no. M0879; Dako; Agilent technologies, Inc.) and β -actin (cat. no. #3700; Cell Signaling Technology, Inc.). Following primary antibody incubation, membranes were further incubated with HRP-conjugated anti-mouse IgG (cat. no. #7076; Cell Signaling Technology, Inc.) and HRP-conjugated anti-rabbit IgG secondary antibodies (cat. no. #7074; Cell Signaling Technology, Inc.; each, 1:10,000) for 1 h at room temperature. Membranes were then washed three times with TBS-T. Protein bands were visualized using the enhanced Chemi-Lumi One System (Nacalai Tesque, Inc.).

ELISA. Plasma samples were taken from all mice and processed as previously described (17,18). Plasma Nox4 (cat. no. SEB924Mu; Cloud-Clone Corp.), MDA (cat. no. KGE013; R&D Systems, Inc.), total cholesterol (cat. no. ab65390; Abcam), tryglycerides (cat. no. ab178780; Abcam) and free fatty acids (FFA; cat. no. ab65341; Abcam) expression was detected using competitive ELISA kits, according to the manufacturer's protocol.

Statistical analysis. Data presented as the mean \pm standard deviation and were analyzed using GraphPad Prism 5.01 software (GraphPad Software, Inc.). A Student's t-test was performed to analyze the differences between the chronic restraint stress and control groups with SPSS 19 software (IBM, Corp.). One-way analysis of variance followed by a Fisher's protected least significant differences test was performed to analyze the quantitative data collected from both groups. $P < 0.05$ was considered to indicate a statistically significant difference.

Results

Chronic restraint stress increases fibrotic biomarker expression in esophageal tissue. The expression of fibrotic proteins, including collagen type I, TGF- β 1, SMAD-3 and α -SMA were examined in esophageal tissue using immunohistochemistry, RT-qPCR and western blotting. Compared with control mice, the expression of fibrotic proteins in stressed mice was predominantly located in the mucosal and epithelial layers of the esophagus (as indicated by arrows; Fig. 1A-D). In addition, chronic restraint stress significantly increased the expression of collagen type I, TGF- β 1, SMAD-3 and α -SMA in the mucosal and epithelial layers of the esophagus when compared with the

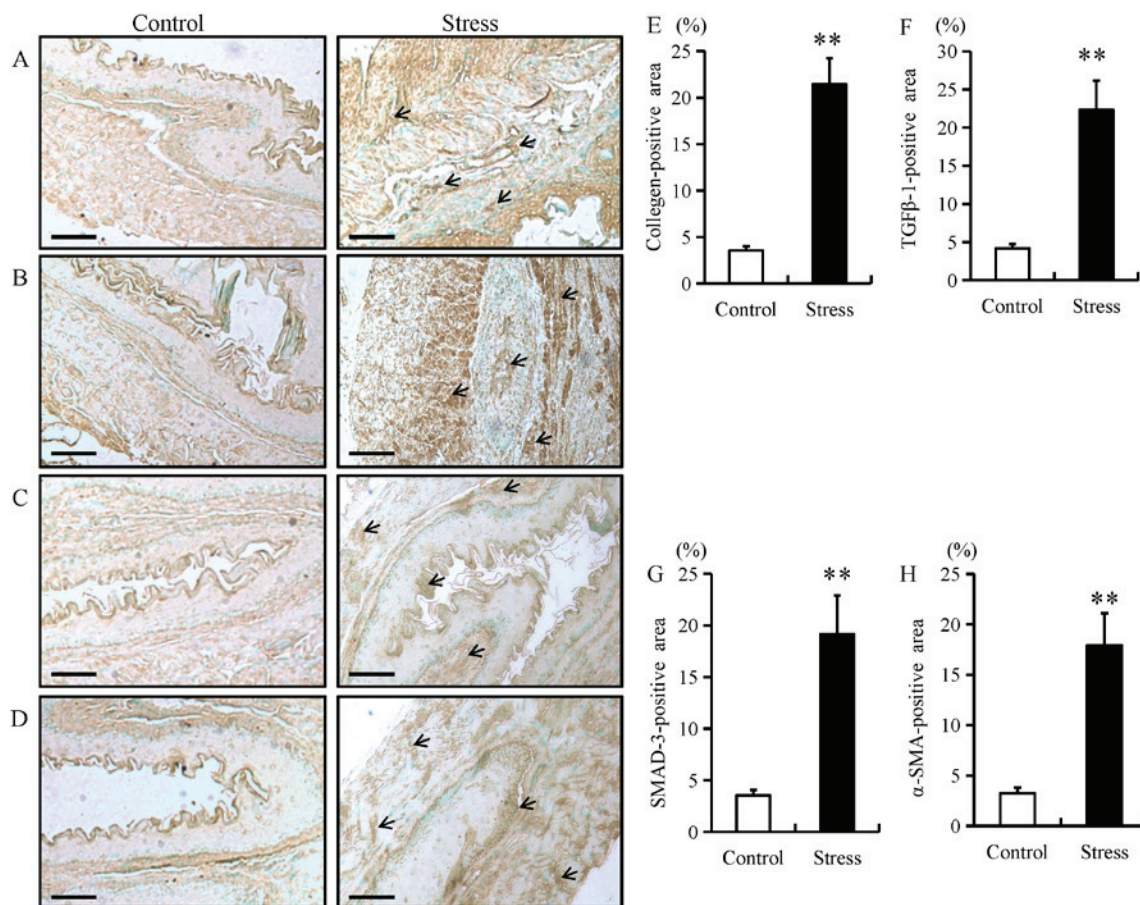


Figure 1. Immunostaining of fibrotic biomarkers in esophageal tissue samples from mice. Immunohistochemistry was performed on esophageal tissue samples from mice in the chronic restraint stress and control groups. Immunostaining for (A) collagen type I, (B) TGF- β 1, (C) SMAD-3 and (D) α -SMA fibrotic markers (magnification, x200; scale bar, 50 μ m). Quantification of (E) collagen type I, (F) TGF- β 1, (G) SMAD-3 and (H) α -SMA positive areas. Data presented as the mean \pm standard deviation (n=15). **P<0.001 vs. control. TGF- β 1, transforming growth factor β 1; SMAD-3, SMAD family member 3; α -SMA, α -smooth muscle actin.

control group (Fig. 1A-H). Furthermore, the mRNA and protein expression of these fibrotic proteins were significantly increased in the esophageal tissue of mice in the chronic restraint stress group compared with the control group (Fig. 2A-E).

Chronic restraint stress induces ROS generation in the esophagus. Chronic stress has been previously reported to trigger ROS production in adipose (18) and colon tissue (21). To determine whether chronic stress triggers the generation of ROS in the esophagus, the expression of Nox4 and MDA were determined using immunohistochemistry in the esophageal tissue of mice. The expression of Nox4 and MDA were predominantly located in the mucosal and epithelial layers of the esophagus (as indicated by arrows; Fig. 3A and B). In addition, chronic restraint stress significantly increased the expression of Nox4 and MDA in the mucosal and epithelial layers of the esophagus (Fig. 3C and D). Furthermore, chronic restraint stress significantly upregulated Nox4 mRNA levels, as well as Nox4 and MDA plasma expression compared with the control group (Fig. 3E-G).

Chronic restraint stress reduces esophageal expression of anti-oxidant proteins. Under normal physiological conditions, Nrf-2 remains in an inactive form in the cytoplasm by Keap1 (22). Nrf-2 can be activated by diverse stimuli, including

oxidants, pro-oxidants and antioxidants (22). Both Nrf-2 and its downstream target gene, HO-1, serve as major regulators in the protection against oxidative stress in the esophagus (23). Oxidative stress can damage the function of the epithelial barrier in the gastrointestinal system (24). Thus, to investigate the potential role of Nrf-2 in esophageal fibrosis, the expression of Nrf-2 and HO-1 was examined in esophageal tissue from mice subjected to chronic restraint stress. The expression of Nrf-2 and HO-1 were predominantly located in the mucosal and epithelial layers of the esophagus (as indicated by arrows; Fig. 4A and B). In addition, chronic restraint stress significantly decreased the expression of Nrf-2 and HO-1 in the mucosal and epithelial layers of the esophagus (Fig. 4C and D). Chronic restraint stress also significantly decreased the mRNA level of Nrf-2 and HO-1 mRNA compared with the control group (Fig. 4E and F). Furthermore, Keap-1, p-Nrf-2, Nrf-2 and HO-1 protein levels were downregulated in both the nucleus and cytoplasm fractions from the chronic restraint stress group compared with the control group (Fig. 4G and H).

Chronic restraint stress induces weight loss and FFA release in mice. Consistent with prior studies (17,18), subjecting the mice to chronic restraint stress for two weeks significantly reduced their body weight compared with the mice in the control group (Table II). In addition, there were no significant

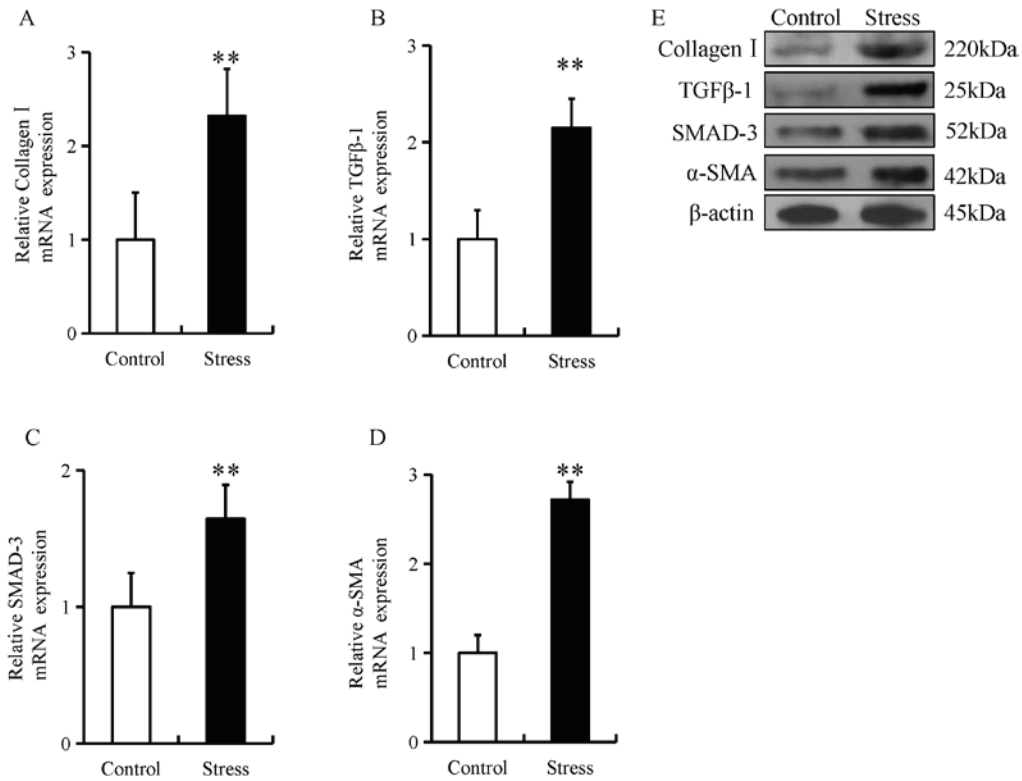


Figure 2. Chronic restraint stress increases esophageal expression of fibrotic biomarkers. The relative mRNA expression levels of (A) collagen type I, (B) TGF-β1, (C) SMAD-3 and (D) α-SMA was determined by reverse transcription-quantitative PCR in esophageal tissue from mice in the chronic restraint stress and control groups. The relative protein expression level of (E) collagen type I, TGF-β1, SMAD-3 and α-SMA was determined via western blot analysis of esophageal tissue from mice in the chronic restraint stress and control groups. Data presented as the mean ± standard deviation (n=15). **P<0.001 vs. control. TGF-β1, transforming growth factor β1; SMAD-3, SMAD family member 3; α-SMA, α-smooth muscle actin.

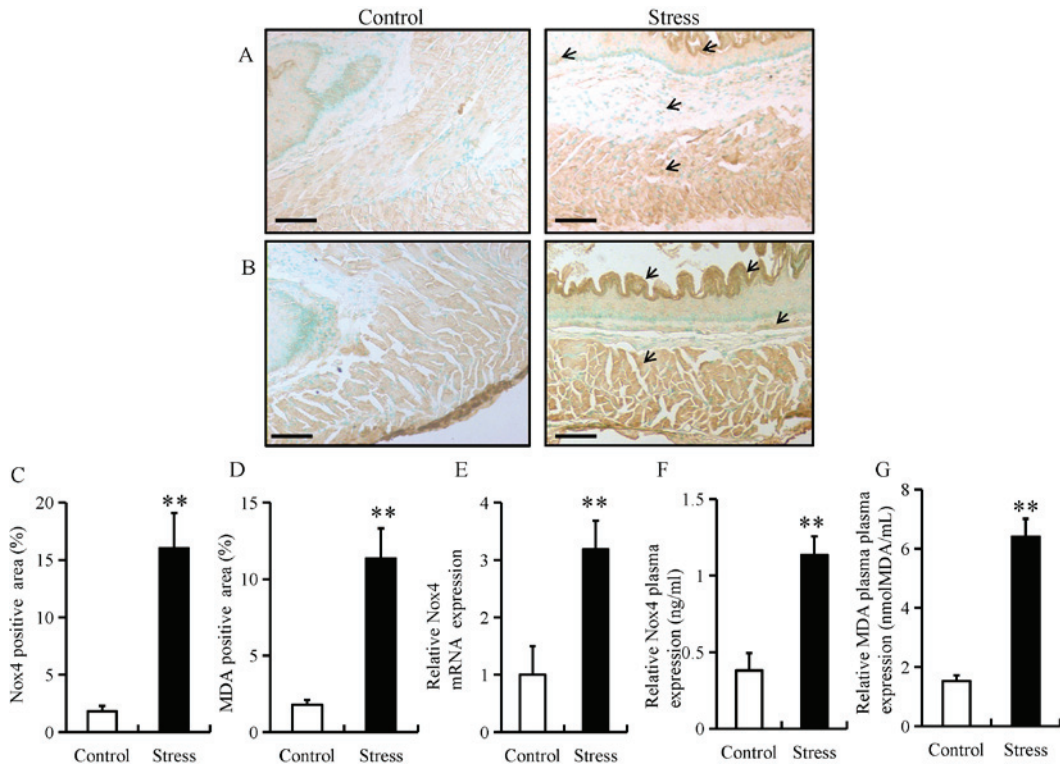


Figure 3. Chronic restraint stress induces ROS generation in the esophagus. Immunostaining of (A) Nox4 and (B) MDA in esophageal tissue from mice in the chronic restraint stress and control groups (magnification, x200; scale bar, 50 μm). Quantification of (C) Nox4 and (D) MDA positive areas. (E) The relative mRNA expression level of Nox4 was determined by reverse transcription-quantitative PCR in esophageal tissue from mice in the chronic restraint stress and control groups. (F) Nox4 and (G) MDA expression was determined by ELISA using plasma samples from mice in the chronic restraint stress and control groups. Data presented as the mean ± standard deviation (n=15). **P<0.001 vs. control. ROS, reactive oxygen species; Nox4, NAPDH oxidase 4; MDA, malondialdehyde.

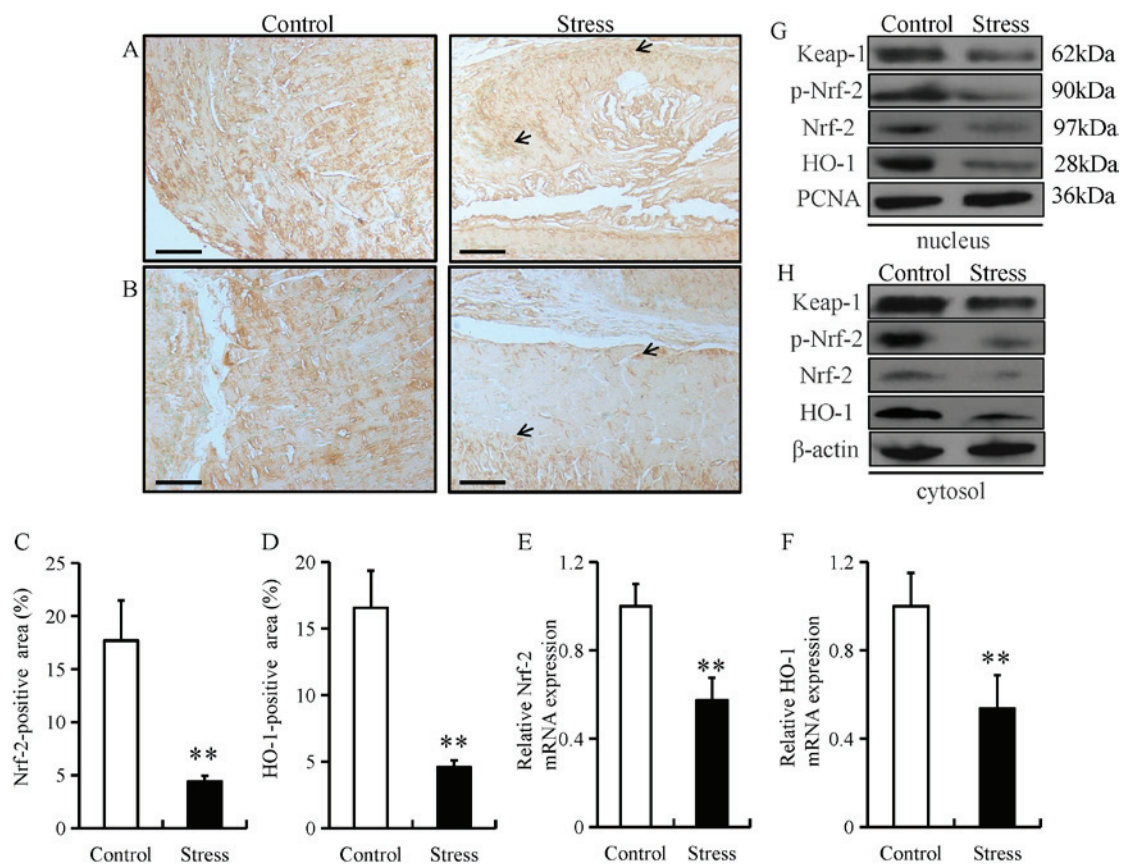


Figure 4. Chronic restraint stress reduces esophageal expression of anti-oxidant proteins. Immunostaining of (A) Nrf-2 and (B) HO-1 in esophageal tissue from mice in the chronic restraint stress and control groups (magnification, $\times 200$; scale bar, $50 \mu\text{m}$). Quantification of the (C) Nrf-2 and (D) HO-1 positive areas. The relative mRNA expression of (E) Nrf-2 and (F) HO-1 was determined by reverse transcription-quantitative PCR in esophageal tissue from mice in the chronic restraint stress and control groups. The relative protein expression of Keap-1, p-Nrf-2, Nrf-2 and HO-1 in the (G) nucleus and (H) cytosol fractions were determined by western blot analysis in esophageal tissue from mice in the chronic restraint stress and control groups. Data presented as the mean \pm standard deviation ($n=15$). ** $P<0.001$ vs. control. Keap1, Kelch like ECH associated protein 1; Nrf-2, nuclear factor erythroid 2-related factor 2; p-, phosphorylated; HO-1, heme oxygenase 1.

differences in the food intake, cholesterol or triglyceride levels of mice in the chronic restraint stress group compared with the control group (Table II). However, the concentration of FFA was significantly increased in the chronic restraint stress group compared with the control group (Table II).

Chronic restraint stress induces esophageal fibrosis in mice.

To examine stress-induced histopathological changes and fibrosis, esophageal tissue from mice in the chronic restraint stress and control groups were stained with H&E, Sirius red or MT. H&E staining demonstrated that chronic restraint stress increased lymphocytic infiltration (as indicated by arrows) and the degree of inflammation within the submucosa of the esophagus, while there were no distinct changes observed in the control group (Fig. 5A and E). Furthermore, MT and sirius red staining highlighted the occurrence of fibrosis (as indicated by arrows) in the esophagus of the stressed mice (Fig. 5B, C and F). The MT-positive fibrotic areas in esophageal tissue from mice in the chronic restraint stress group were increased compared with the control group (Fig. 5F). IHC for F4/80 (specific for monocytes/macrophages, respectively) was performed in esophageal tissue from mice in the chronic restraint stress and control groups. The results demonstrated that F4/80 expression was predominantly located in the mucosal and epithelial layers of the esophagus (as indicated by arrows), and that expression

levels significantly increased in the chronic restraint stress group compared with the control group (Fig. 5D and G).

Discussion

The current study identified several key findings. The expression of fibrotic proteins, including collagen type I, TGF- $\beta 1$, SMAD-3 and α -SMA, demonstrated that chronic restraint stress may induce esophageal fibrosis in mice. In addition, chronic restraint stress may induce oxidative stress as the expression levels of Nox4 and MDA were significantly increased in mice. Furthermore, chronic restraint stress reduced the expression of several anti-oxidative proteins, including Keap-1, p-Nrf-2, Nrf-2 and HO-1 in the esophageal tissue of mice. In conclusion, the current study demonstrated that chronic stress may trigger esophageal fibrosis by enhancing oxidative stress and suppressing the anti-oxidative system.

Oxidative stress is an essential factor in the pathogenesis of esophageal injury/repair and in esophageal barrier dysfunction (25). NADPH oxidases, including Nox4, are the main producers of ROS in the esophagus and serve key roles in esophageal remodeling, esophageal barrier dysfunction and inflammation (26,27). Previous studies have demonstrated that two weeks of chronic restraint stress can trigger inflammation and ROS accumulation in different types of tissues (18,20).

Table II. Chronic restraint stress-induced weight loss and FFA release in mice.

	Control	Stress	P-value
BW gain (g)	1.37±0.02	1.04±0.04	<0.001
Food intake (mg)	133.5±2.46	130.7±2.46	0.441
TC (mg/dl)	64±2.42	70.6±3.23	0.123
TG (mg/dl)	8.19±0.39	8.95±0.62	0.324
FFA (mEq/l)	0.36±0.03	0.91±0.05	<0.001

Data presented as the mean ± SD (n=15). BW, body weight; TC, total cholesterol; TG, tryglycerides; FFA, free fatty acids.

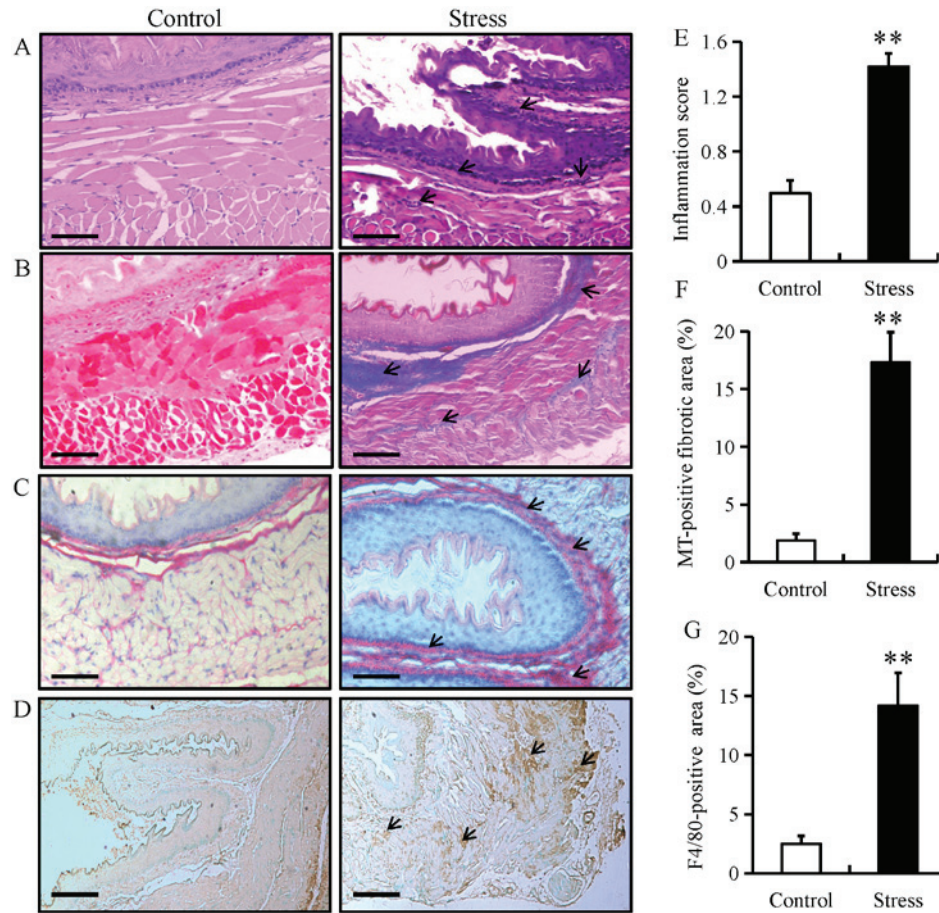


Figure 5. Chronic restraint stress induces esophageal fibrosis in mice. Esophageal tissue from mice in the chronic restraint stress and control groups were analyzed by (A) H&E, (B) MT and (C) Sirius red staining. (magnification, x200; scale bar, 50 μ m). (D) Immunostaining for F4/80 in esophageal tissue from mice in the chronic restraint stress group and control group (magnification, x200; scale bar, 50 μ m). (E) Histology inflammation score. (F) Quantification of the MT-positive areas. (G) Quantification of the F4/80-positive areas. Data presented as the mean \pm standard deviation (n=15). **P<0.001 vs. control. H&E, hematoxylin and eosin; MT, Masson's trichrome.

Oxidative stress also leads to esophageal fibrosis by increasing the expression of TGF- β 1, which enhances the synthesis of esophageal collagen and suppresses the degradation of collagen in the gastroesophageal reflux disease (GERD) model (25,28). The current study demonstrated that chronic restraint stress enhanced the *in vivo* esophageal expression of Nox4 and MDA, a biomarker of oxidative stress.

Chronic psychological stress can induce oxidative stress in different tissues, including the brain and peripheral blood cells, and these adverse effects can be partially reversed by anxiolytic agents (29). A previous study demonstrated that

two weeks of chronic restraint stress in mice caused an accumulation of ROS and inflammation in several types of tissue, including visceral adipose tissue (VAT) as well as liver and intestine (21). Suppressed chronic stress-induced ROS production and VAT inflammation were identified as potential therapeutic targets for stress-associated disorders (18). Increased ROS accumulation in VAT is accompanied by increased NADPH oxidase (NOX) subunits and decreased antioxidant enzymes and has been recognized as an early marker and potential therapeutic target of metabolic syndrome (16).

Activated myofibroblasts are key effector cells in all models of fibrosis. In wound healing, tissue strain and cytokine release activate myofibroblasts, which initiate migration, extracellular matrix (ECM) deposition and tissue contraction, thereby maintaining tissue homeostasis (30). However, in fibrosis, an exaggerated myofibroblast response results in inappropriate ECM deposition, increased tissue stiffness and organ dysfunction (31). As epithelial cells are capable of transdifferentiation under these conditions, it has been recognized that during chronic inflammation, epithelial cells undergo epithelial-to-mesenchymal transition in fibrosis (32). As the epithelium is often the site of primary injury and inflammation, epithelial cells may also function as effector cells in fibrogenesis.

Oxidative stress is closely associated with the pathogenesis of GERD, which leads to increased ROS production (33). Long-term exposure to oxidative stress in GERD induces chronic inflammation and fibrosis in the esophagus, which leads to the formation and progression of disease states in esophageal tissue (25). In addition, markers for oxidative stress are overexpressed in patients with GERD, which indicates that increased ROS may be primarily responsible for the development of GERD (34). ROS also leads to esophageal fibrosis by increasing the expression of TGF- β 1, which enhances the synthesis of esophageal collagen and suppresses the degradation of collagen in the GERD model (35). In the present study, chronic restraint stress upregulated subunits of NOX, a major source of ROS and downregulated antioxidant proteins in the esophagus.

In the current study, direct measurement of ROS was not performed and this may be considered a limitation associated with the study, which will need to be addressed in future work. In a previous study, chronic restraint stress markedly induced the accumulations of ROS in adipose (18) and colon tissue (21). The present study examined the expression levels of ROS markers including, Nox4 and MDA. The results demonstrated that two weeks of chronic restraint stress significantly increased the expression of Nox4 and MDA in the mucosal and epithelial layers of the esophagus. In addition, mRNA and plasma levels of Nox4 and MDA were significantly increased in the esophageal tissue of mice in the chronic restraint stress group compared with the control group. Taken together, these results indicate that chronic stress significantly increased ROS production in the esophagus of mice.

The Nrf-2/Keap-1 signaling pathway provides cells with a defense mechanism against oxidative stress by regulating the expression of enzymes that serve key roles in the anti-oxidative stress response and detoxification (36). Esophageal hyperkeratosis in Keap-1 knockout mice was due to activation of peroxisome proliferator-activated receptor- β/Δ and the PI3K/Akt pathway (37). Chen *et al* (38) demonstrated that Nrf-2 deficiency impairs the barrier function of mouse esophageal epithelium by disrupting the expression of tight junction proteins. Furthermore, as a downstream gene of Nrf-2, HO-1 prevents gastroesophageal reflux-induced esophageal barrier dysfunction by suppressing oxidative stress in mouse models of GERD (38). In summary, the present study demonstrated that chronic stress reduced the esophageal expression of several anti-oxidative proteins including, Keap-1, phospho-Nrf-2, Nrf-2 and HO-1 in mice.

TGF- β 1/SMAD-3 signaling has been recognized as a common pathway involved in several fibrotic diseases (39). TGF- β 1 overexpression can introduce several negative impacts,

which include promoting direct transcription of pro-fibrotic factors, such as collagen type I, and the contraction of cultured esophageal smooth muscle cells (40). Cells secrete TGF- β 1, which binds to TGF- β 1 cell surface receptors (TGF- β RI and TGF- β RII) on fibroblasts. These receptors can activate and translocate intracellular SMADs (a family of transcription factors that mediate TGF- β 1 signals) to the nucleus, where they regulate transcription of collagen genes, which contributes to fibrosis (26). The phosphorylation of the receptor-dependent SMAD2/3, along with SMAD4, creates a complex, which can be translocated from the cytoplasm to the nucleus to regulate collagen gene transcription (28).

Previous studies have demonstrated several types of SMAD-3-dependent collagen gene promoters, which are activated by TGF- β 1 (41,42). Dominant-negative SMAD-3 expression vectors specifically inhibited the activation of these promoters (43). Cho *et al* (44) examined the role of SMAD-3 in a mouse model of egg-induced eosinophilic esophagitis and revealed that SMAD-3-deficient mice esophageal fibroblasts could not respond to TGF- β 1 to regulate the expression of collagen genes, thereby reducing esophageal fibrosis. However, in the current study, chronic stress increased the esophageal expression of fibrotic genes in mice.

In conclusion, two weeks of chronic restraint stress induced esophageal fibrosis in a murine model with enhanced oxidative stress and reduced the anti-oxidative system.

Acknowledgements

The authors would like to thank Dr Kyosuke Takeshita for carefully reading and editing to the manuscript.

Funding

The current study was supported by a grant from the Xinjiang Uygur Autonomous Region Natural Science Foundation Program (grant no. 2018D01C134).

Availability of data and materials

All data that generated or analyzed during this study are included in this published article.

Authors' contribution

MY and KA designed the current study, performed the experiments and prepared the manuscript. WW, AiA, YL, AzA, A1A, MA, WZ, ZC and AM performed the experiments, collected and analyzed the data, and prepared the manuscript. All authors read and approved the final manuscript.

Ethics approval and consent to participate

All animal experiments were approved by the Animal Care and Use Committee of the People's Hospital of Xinjiang Uygur Autonomous Region (Urumqi, China).

Patient consent for publication

Not applicable.

Competing interests

The authors declare that they have no competing interests.

References

- Godoy LD, Rossignoli MT, Delfino-Pereira P, Garcia-Cairasco N and de Lima Umeoka EH: A comprehensive overview on stress neurobiology: Basic concepts and clinical implications. *Front Behav Neurosci* 12: 127, 2018.
- Liu YZ, Wang YX and Jiang CL: Inflammation: The common pathway of stress-related diseases. *Front Hum Neurosci* 11: 316, 2017.
- Lucca G, Comim CM, Valvassori SS, Reus GZ, Vuolo F, Petronilho F, Dal-Pizzol F, Gavioli EC and Quevedo J: Effects of chronic mild stress on the oxidative parameters in the rat brain. *Neurochem Int* 54: 358-362, 2009.
- Tomanek L: Proteomic responses to environmentally induced oxidative stress. *J Exp Biol* 218: 1867-1879, 2015.
- Gutierrez J, Ballinger SW, Darley-Usmar VM and Landar A: Free radicals, mitochondria, and oxidized lipids: The emerging role in signal transduction in vascular cells. *Circ Res* 99: 924-932, 2006.
- Zafir A and Banu N: Modulation of in vivo oxidative status by exogenous corticosterone and restraint stress in rats. *Stress* 12: 167-177, 2009.
- Gumuslu S, Sarikcioglu SB, Sahin E, Yargicoglu P and Açar A: Influences of different stress models on the antioxidant status and lipid peroxidation in rat erythrocytes. *Free Radic Res* 36: 1277-1282, 2002.
- Sahin E and Gümüslü S: Immobilization stress in rat tissues: Alterations in protein oxidation, lipid peroxidation and antioxidant defense system. *Comp Biochem Physiol C Toxicol Pharmacol* 144: 342-347, 2007.
- Li-Kim-Moy JP, Tobias V, Day AS, Leach S and Lemberg DA: Esophageal subepithelial fibrosis and hyalinization are features of eosinophilic esophagitis. *J Pediatr Gastroenterol Nutr* 52: 147-153, 2011.
- Linares V, Sánchez DJ, Bellés M, Albina L, Gómez M and Domingo JL: Pro-oxidant effects in the brain of rats currently exposed to uranium and stress. *Toxicology* 236: 82-91, 2007.
- Bedard K and Krause KH: The NOX family of ROS-generating NADPH oxidases: Physiology and pathophysiology. *Physiol Rev* 87: 245-313, 2007.
- Babalola O, Mamalis A, Lev-tov H and Jagdeo J: NADPH oxidase enzymes in skin fibrosis: Molecular targets and therapeutic agents. *Arch Dermatol Res* 306: 313-330, 2014.
- Hecker L, Cheng J and Thannickal VJ: Targeting NOX enzymes in pulmonary fibrosis. *Cell Mol Life Sci* 69: 2365-2371, 2012.
- De Minicis S and Brenner DA: NOX in liver fibrosis. *Arch Biochem Biophys* 462: 266-272, 2007.
- Pennathur S, Hecker L and Thannickal VJ: Oxidative Stress and Cardiovascular Fibrosis: Humana Press: pp425-441, 2010.
- Holterman CE, Read NC and Kennedy CR: Nox and renal disease. *Clin Sci (Lond)* 128: 465-481, 2015.
- Yisireyili M, Hayashi M, Wu H, Uchida Y, Yamamoto K, Kikuchi R, Shoaib Hamrah M, Nakayama T, Wu Cheng X, Matsushita T, *et al*: Xanthine oxidase inhibition by febuxostat attenuates stress-induced hyperuricemia, glucose dysmetabolism and prothrombotic state in mice. *Sci Rep* 7: 1266, 2017.
- Yisireyili M, Takeshita K, Hayashi M, Wu H, Uchida Y, Yamamoto K, Kikuchi R, Hao CN, Nakayama T, Cheng XW, *et al*: Dipeptidyl peptidase-IV inhibitor alogliptin improves stress-induced insulin resistance and prothrombotic state in a murine model. *Psychoneuroendocrinology* 73: 186-195, 2016.
- Li Q, Kong L, Zhang S, Zhong Z, Liu X, Wang J and Kang J: A novel external esophageal perfusion model for reflux-associated respiratory symptoms. *Pathobiology* 77: 163-168, 2010.
- Livak KJ and Schmittgen TD: Analysis of relative gene expression data using real-time quantitative PCR and the 2(-Delta Delta C(T)) method. *Methods* 25: 402-408, 2001.
- Yisireyili M, Uchida Y, Yamamoto K, Nakayama T, Cheng XW, Matsushita T, Nakamura S, Murohara T and Takeshita K: Angiotensin receptor blocker irbesartan reduces stress-induced intestinal inflammation via AT1a signaling and ACE2-dependent mechanism in mice. *Brain Behav Immun* 69: 167-179, 2018.
- Wakabayashi N, Itoh K, Wakabayashi J, Motohashi H, Noda S, Takahashi S, Imakado S, Kotsuji T, Otsuka F, Roop DR, *et al*: Keap1-null mutation leads to postnatal lethality due to constitutive Nrf2 activation. *Nat Genet* 35: 238-245, 2003.
- Torihata Y, Asanuma K, Iijima K, Mikami T, Hamada S, Asano N, Koike T, Imatani A, Masamune A and Shimosegawa T: Estrogen-dependent Nrf2 expression protects against reflux-induced esophagitis. *Dig Dis Sci* 63: 345-355, 2018.
- Peng D, Belkhir A, Hu T, Chaturvedi R, Asim M, Wilson KT, Zaika A and El-Rifai W: Glutathione peroxidase 7 protects against oxidative DNA damage in oesophageal cells. *Gut* 61: 1250-1260, 2012.
- Oh TY, Lee JS, Ahn BO, Cho H, Kim WB, Kim YB, Surh YJ, Cho SW and Hahm KB: Oxidative damages are critical in pathogenesis of reflux esophagitis: Implication of antioxidants in its treatment. *Free Radic Biol Med* 30: 905-915, 2001.
- Aceves SS: Remodeling and fibrosis in chronic eosinophil inflammation. *Dig Dis Sci* 32: 15-21, 2014.
- Wynn TA and Ramalingam TR: Mechanisms of fibrosis: Therapeutic Translation for fibrotic disease. *Nat Med* 18: 1028-1040, 2012.
- Sziksz E, Pap D, Lippai R, Béres NJ, Fekete A, Szabó AJ and Vannay A: Fibrosis related inflammatory mediators: Role of the IL-10 cytokine family. *Mediators Inflamm* 2015: 764641, 2015.
- Miller MW and Sadeh N: Traumatic stress, oxidative stress and post-traumatic stress disorder: Neurodegeneration and the accelerated-aging hypothesis. *Mol Psychiatry* 19: 1156-1162, 2014.
- Frangogiannis NG: Fibroblast-extracellular matrix interactions in tissue fibrosis. *Curr Pathobiol Rep* 4: 11-18, 2016.
- Hosper NA, van den Berg PP, de Rond S, Popa ER, Wilmer MJ, Masereeuw R and Bank RA: Epithelial-to-mesenchymal transition in fibrosis: Collagen type I expression is highly upregulated after EMT, but does not contribute to collagen deposition. *Exp Cell Res* 319: 3000-3009, 2013.
- Hinz B, McCulloch CA and Coelho NM: Mechanical regulation of myofibroblast phenocconversion and collagen contraction. *Exp Cell Res* 379: 119-128, 2019.
- Song JH, Han YM, Kim WH, Park JM, Jeong M, Go EJ, Hong SP and Hahm KB: Oxidative stress from reflux esophagitis to esophageal cancer: the alleviation with antioxidants. *Free Radic Res* 50: 1071-1079, 2016.
- Dandekar A, Mendez R and Zhang K: Cross talk between ER stress, oxidative stress, and inflammation in health and disease. *Methods Mol Biol* 1292: 205-214, 2015.
- Maqbool A and Pauwels A: Cystic fibrosis and gastroesophageal reflux disease. *J Cyst Fibros* 2 (16 Suppl): S2-S13, 2017.
- Jaramillo MC and Zhang DD: The emerging role of the Nrf2-Keap1 signaling pathway in cancer. *Genes Dev* 27: 2179-2191, 2013.
- Chen H, Fang Y, Li W, Orlando RC, Shaheen N and Chen XL: NfκB and Nrf2 in esophageal epithelial barrier function. *Tissue Barriers* 1: e27463, 2013.
- Chen H, Hu Y, Fang Y, Djukic Z, Yamamoto M, Shaheen NJ, Orlando RC and Chen X: Nrf2 deficiency impairs the barrier function of mouse oesophageal epithelium. *Gut* 63: 711-719, 2014.
- Balta C, Herman H, Boldura OM, Gasca I, Rosu M, Ardelean A and Hermenean A: Chrysin attenuates liver fibrosis and hepatic stellate cell activation through TGF-β/Smad signaling pathway. *Chem Biol Interact* 240: 94-101, 2015.
- Kuppan P, Sethuraman S and Krishnan UM: In vitro co-culture of epithelial cells and smooth muscle cells on aligned nanofibrous scaffolds. *Mater Sci Eng C Mater Biol Appl* 81: 191-205, 2017.
- Ghosh AK, Bhattacharyya S and Varga J: The tumor suppressor p53 abrogates Smad-dependent collagen gene induction in mesenchymal cells. *J Biol Chem* 279: 47455-47463, 2004.
- Ito S, Ogawa K, Takeuchi K, Takagi M, Yoshida M, Hirokawa T, Hirayama S, Shin-Ya K, Shimada I, Doi T, *et al*: A small-molecule compound inhibits a collagen-specific molecular chaperone and could represent a potential remedy for fibrosis. *J Biol Chem* 292: 20076-20085, 2017.
- Hu Z, Robbins JS, Pister A, Zafar MB, Zhang ZW, Gupta J, Lee KJ, Newman K, Yun CO, Guise T and Seth P: A modified hTERT promoter-directed oncolytic adenovirus replication with concurrent inhibition of TGFβ signaling for breast cancer therapy. *Cancer Gene Ther* 17: 235-243, 2010.
- Cho JY, Doshi A, Rosenthal P, Beppu A, Miller M, Aceves S and Broide D: Smad3-deficient mice have reduced esophageal fibrosis and angiogenesis in model of egg-induced eosinophilic esophagitis. *J Pediatr Gastroenterol Nutr* 59: 10-16, 2014.