



## ORIGINAL ARTICLE

# HbA1c and retinal sensitivity in diabetics using microperimetry



Sharanjeet-Kaur<sup>a,\*</sup>, Siti-Aishah Ismail<sup>a</sup>, Haliza Abdul Mutalib<sup>a</sup>, Nor Fariza Ngah<sup>b</sup>

<sup>a</sup> Optometry & Vision Science Program, School of Healthcare Sciences, Faculty of Health Sciences, Universiti Kebangsaan Malaysia, Jalan Raja Muda Abdul Aziz, 50300 Kuala Lumpur, Malaysia

<sup>b</sup> Hospital Shah Alam, Department of Ophthalmology, Persiaran Kayangan, Section 7, 40000 Shah Alam, Selangor, Malaysia

Received 7 November 2017; accepted 29 March 2018

Available online 26 May 2018

### KEYWORDS

Retinal sensitivity;  
Early diabetes;  
HbA1c

### Abstract

**Purpose:** The purpose of this study was to determine the relationship between HbA1c values and retinal sensitivity at central 10° using the MP-1 microperimeter.

**Methods:** A prospective study was carried out on 32 healthy subjects (control group) and 60 diabetic patients. The diabetic patients were divided into 2 groups. Group 1 comprised of 30 patients without diabetic retinopathy (DR) and group 2 had 30 patients with mild non-proliferative DR. A full-threshold microperimetry of the central 10° of retina (the macula) was performed on all subjects, utilizing 32 points with the MP-1. The relationship between light sensitivity and HbA1c value was calculated using linear regression analysis.

**Results:** Total mean sensitivity at 10° for group 1 without DR, group 2 with mild NPDR and control group were  $18.67 \pm 0.83$ ,  $17.98 \pm 1.42$  and  $19.45 \pm 0.34$  (dB), respectively. There was a significant difference in total mean retinal sensitivity at 10° between the 3 groups ( $F(2,89) = 18.14$ ,  $p = 0.001$ ). A simple linear regression was calculated to predict HbA1c based on retinal sensitivity. A significant regression equation was found ( $F(1,90) = 107.61$ ,  $p = 0.0001$ , with an  $R^2$  of 0.545). The linear regression analysis revealed that there was a 0.64 dB decline in mean retinal sensitivity within the central 10° diameter with an increase of 1 mmHg of HbA1c.

**Conclusion:** Retinal sensitivity at the central 10° of the macula is affected by changes in HbA1c values.

© 2018 Spanish General Council of Optometry. Published by Elsevier España, S.L.U. This is an open access article under the CC BY-NC-ND license (<http://creativecommons.org/licenses/by-nc-nd/4.0/>).

\* Corresponding author at: Optometry & Vision Science Program, Faculty of Health Sciences, Universiti Kebangsaan Malaysia, Jalan Raja Muda Abdul Aziz, 50300 Kuala Lumpur, Malaysia.

E-mail address: [sharanjeet@ukm.edu.my](mailto:sharanjeet@ukm.edu.my) (Sharanjeet-Kaur).

**PALABRAS CLAVE**

Sensibilidad de la retina;  
Diabetes precoz;  
HbA1c

**HbA1c y sensibilidad de la retina medida mediante microperimetría en pacientes diabéticos****Resumen**

**Objetivo:** El objetivo de este estudio fue determinar la relación entre los valores de HbA1c y la sensibilidad de la retina en los 10 grados centrales de la misma utilizando el microperímetro MP-1.

**Métodos:** Se realizó un estudio prospectivo en 32 sujetos sanos (grupo control) y 60 pacientes diabéticos. Los pacientes diabéticos se dividieron en dos grupos: el grupo 1 se compuso de 30 pacientes sin retinopatía diabética (RD), y el grupo 2 incluyó a 30 pacientes con RD no proliferativa leve. Se realizó una microperimetría umbral total de los 10° centrales de la retina (la mácula) a todos los sujetos, utilizando 32 puntos con el MP-1. Se calculó la relación entre la sensibilidad retiniana y el valor de HbA1c utilizando un análisis de regresión lineal.

**Resultados:** La sensibilidad media total a los 10° para el grupo 1 sin RD, el grupo 2 con NPDR leve y el grupo control fue de  $18,67 \pm 0,83$ ,  $17,98 \pm 1,42$  y  $19,45 \pm 0,34$  (dB), respectivamente. Se observó una diferencia significativa en cuanto a sensibilidad media total de la retina a 10° entre los tres grupos ( $F(2,89) = 18,14$ ,  $p = 0,001$ ). Se realizó un análisis de regresión lineal simple para predecir HbA1c en base a la sensibilidad de la retina. Se encontró una ecuación de regresión significativa ( $F(1,9) = 107,61$ ,  $p = 0,0001$ , con  $R^2$  de 0,545). El análisis de regresión lineal reveló que existe un descenso de 0,64 dB de la sensibilidad media de la retina dentro del diámetro de 10° centrales con un incremento de 1 mmHg de HbA1c.

**Conclusión:** La sensibilidad de la retina en los 10 grados centrales de la mácula se ve afectada por los cambios de los valores de HbA1c.

© 2018 Spanish General Council of Optometry. Publicado por Elsevier España, S.L.U. Este es un artículo Open Access bajo la licencia CC BY-NC-ND (<http://creativecommons.org/licenses/by-nc-nd/4.0/>).

**Introduction**

An ocular complication associated with diabetes mellitus (DM), which is diabetic retinopathy (DR), is one of the most common causes of blindness all over the world.<sup>1</sup> Although it has been regarded as a microvascular disorder,<sup>2</sup> there is recent evidence that retinal neurodegeneration is an early event in the pathogenesis of diabetic retinopathy.<sup>3</sup> The retinal neurosensory losses precede the onset of clinically detectable retinopathy.<sup>4</sup> Many studies have shown that DM is accompanied by neuroretinal degeneration, which can be observed structurally and functionally.<sup>5,6</sup> Although ample evidence suggests that retinal damage results from microvascular abnormalities, it is mostly assumed that the neuroretinal degeneration is a secondary effect of microvascular damage. However, there is mounting evidence that neuroretinal alterations are present even in the absence of clinically detectable retinal diabetic retinopathy.<sup>6-8</sup>

Several randomized controlled trials and observational studies have shown that glycated hemoglobin or hemoglobin A1c is a good predictor of microvascular complications,<sup>9,10</sup> and is highly correlated with fasting plasma glucose.<sup>11</sup> Therefore, the use of HbA1c as a diagnostic test for diabetes has been recommended.<sup>12,13</sup> Higher levels of HbA1c were associated with microvascular complications. It has been shown that mild and moderate retinopathy were rare below HbA1c 6.6–7.0% and the prevalence increased 16–17-fold above this level of HbA1c.<sup>14</sup>

The structural changes observed as a result of neuroretinal degeneration are neural apoptosis, ganglion cell

(GC) loss, reactive gliosis, and thinning of the inner retina; whereas the functional changes observed are deficits in the electroretinogram (ERG), dark adaptation, contrast sensitivity, color vision, and microperimetric and perimetric psychophysical testing.<sup>5,6</sup> Recently, fundus-driven microperimetry has emerged as a simple, non-invasive and rapid test that can be used in the clinical practice.<sup>15,16</sup> Microperimetry measures retinal sensitivity in terms of the minimum light intensity that patients can perceive when spots of light stimulate specific areas of the retina. Some recent studies have suggested that microperimetry is even more sensitive than multifocal electroretinography (mfERG) in detecting early functional changes of the retina.<sup>17</sup>

On these bases, this study was conducted to determine the relationship between HbA1c values and retinal sensitivity at central 10° using the MP-1 microperimeter. It is hypothesized that since HbA1c is associated with diabetic retinopathy, and the presence of diabetic retinopathy is associated with diminution of retinal sensitivity, therefore HbA1c would be associated to the diminution of retinal sensitivity.

**Material and methods****Subjects**

The study protocol was performed on 3 groups of subjects. Group 1 comprised of 30 diabetic patients without DR, group 2 comprised of 30 diabetic patients with mild non-proliferative DR (nPDR) and group 3, which was the

control group, comprised of 32 healthy adults. The diabetic patients were chosen among patients attending the diabetic eye clinic whereas the healthy group was the volunteers who attended either for a routine ocular examination or as a person accompanying a patient at the diabetic eye clinic in a hospital in the Klang Valley.

Only subjects with Type 2 diabetes, with best corrected visual acuity of 6/9 or better,<sup>18</sup> refractive errors less than  $-3.00D$  sphere and less than or equal to  $\pm 1.00D$  cylinder were included. Eyes with significant ocular pathologies, clinical evidence of macular disease, trauma, surgery, systemic disorder or medication known to affect visual function were excluded.<sup>18</sup>

## Procedure

All recruited patients were subjected to a detailed medical ocular history, glycemic blood test (HbA1c) and comprehensive optometric examinations (which included visual acuity and refractions test, slit-lamp examination, IOP measurement, fundus examination) A microperimetry was also conducted. All procedures were performed by the same experienced optometrist. The glycated hemoglobin (HbA1c) test was performed by a certified nurse.

## Microperimetry

The fundus perimetry was performed using microperimetry, MP-1 (Nidek Technologies, Padova, Italy) in a dark room by a trained optometrist. The subject was dark-adapted for 10 min before the actual test was initiated.<sup>19</sup> All subjects were given a test run of 5 stimulus presentations before starting the actual measurements in order to familiarize them with the protocol and minimize the learning effect on their performance.

The stimulus size used was Goldmann III ( $0.41^\circ$  diameter) with a presentation time of 200 ms and  $1.27 \text{ cd/m}^2$  background illumination.<sup>20</sup> The MP-1 threshold was performed within  $10^\circ$  of the retina central ( $1^\circ = 300 \mu\text{m}$ , thus  $10^\circ = 3000 \mu\text{m}$  that encompasses the macular area) by using a 32-point strategy with 4-2-1 automated staircase threshold method. The details of the test and testing procedure has been described previously.<sup>21</sup>

## Statistical analysis

Statistical analyses were performed using SPSS software version 20.0 (SPSS, Chicago, IL, USA). Shapiro–Wilk test was used to determine the distribution of the data and was found to be normally distributed. As such, parametric tests were applied for data analysis. Qualitative variables were expressed as mean  $\pm$  SD. Statistical significance was assumed at  $p < 0.05$  within 95% confident interval, CI.

Differences in retinal light sensitivity and differences in HbA1c values among the 3 groups of subjects were evaluated by the one-way ANOVA statistical test. Relationship between HbA1c and retinal sensitivity was determined using Pearson correlation. The linear regression analysis was used to measure the strength of the linear relationship between retinal light sensitivity with HbA1c values.

## Results

### Demographic data

The demographic data of subjects in this study are shown in Table 1. The age range of subjects recruited in this study was between 19 and 58 years for group 1, 27 and 59 years for group 2, and 23 and 47 years for group 3. There was a significant difference in age between the age groups. A Tukey post hoc test revealed a statistically significant difference in age between group 3 and group 1 and group 2. There was however no difference in age between group 1 and 2.

### Retinal sensitivity

Table 2 shows the mean retinal sensitivity at the central  $10^\circ$ . There was a significant difference in mean retinal sensitivity between the 3 groups;  $F(2, 89) = 18.14$ ,  $\eta^2 = 0.28$  ( $p < 0.05$ ). A Tukey post hoc test revealed a significant difference in mean retinal sensitivity between group 3 and group 1 and group 2. There was, however, no significant difference in mean retinal sensitivity between group 1 and group 2.

**Table 1** Demographic data of subjects.

Parameters	Group 1 (diabetics without DR) ( $n = 30$ )	Group 2 (diabetics with nPDR) ( $n = 30$ )	Group 3 (normal controls) ( $n = 32$ )	<i>p</i> -value
Mean Age $\pm$ SD (years)	46.60 $\pm$ 9.40	47.13 $\pm$ 9.42	30.53 $\pm$ 6.13	0.000
Gender				
Male	12	8	18	0.563
Female	18	22	14	
Mean spherical equivalent (DS)	$-1.96 \pm 1.25$	$-2.28 \pm 1.01$	$-1.89 \pm 0.91$	0.393

**Table 2** Mean retinal sensitivity of the groups.

Parameters	Group 1 (diabetics without DR) (n = 30)	Group 2 (diabetics with nPDR) (n = 30)	Group 3 (normal controls) (n = 32)	p-value
Mean retinal sensitivity $\pm$ SD (dB)	18.67 $\pm$ 0.83	17.98 $\pm$ 1.42	19.45 $\pm$ 0.34	0.000

**Table 3** Mean HbA1c values of the groups.

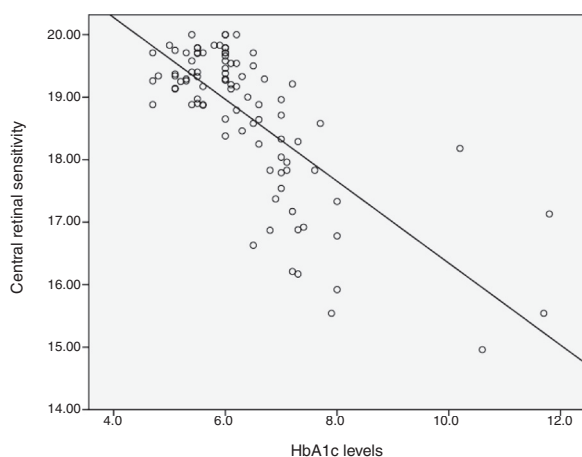
Parameters	Group 1 (diabetics without DR) (n = 30)	Group 2 (diabetics with nPDR) (n = 30)	Group 3 (normal controls) (n = 32)	p-value
HbA1c (%)	6.5 $\pm$ 0.51	7.37 $\pm$ 1.64	5.35 $\pm$ 0.27	0.001

### HbA1c values

HbA1c values were statistically different between the three groups. Mean HbA1c (SD) in diabetes groups was significantly higher than control group as can be seen in Table 3. Tukey post hoc test revealed a statistically significant difference in HbA1c values between all 3 groups.

### Relationship between HbA1c values and mean retinal sensitivity

The relationship between HbA1c values and mean retinal sensitivity was determined by Pearson correlation. There was a good and significant correlation ( $r = -0.73$ ,  $p = 0.000$ ) between the 2 variables. Linear regression analysis showed that HbA1c values accounted for a 54.5% significant reduction in retinal sensitivity ( $R^2 = 0.545$ ). Fig. 1 shows the



**Figure 1** Scatter plot of HbA1c and 10° central retinal sensitivity.

scatter plot of HbA1c and central retinal sensitivity. The regression equation was:

$$\text{Retinal sensitivity} = 22.802 - 0.64\text{HbA1c}$$

It is also predicted that for every increase of 1 unit mmHg HbA1c values, there will be a decrease in retinal sensitivity in the central 10° retina of 0.64 dB. The results also showed 54% of the central retinal sensitivity changes is influenced by HbA1c control. Fig. 1 shows that scatter plot of the relationship between HbA1c values and retinal sensitivity.

### Discussion

To the best of our knowledge, this is the first study that explored the relationship between HbA1c with retinal sensitivity. This study revealed that the mean retinal sensitivity at the central 10° was reduced in both the diabetic groups 1 and 2 when compared to the control group 3. Our previous study showed that there was a decline in retinal sensitivity with increasing age of normal healthy subjects.<sup>21</sup> Although in the present study there was a significant difference in the age between the three groups, when the mean retinal sensitivity of the subjects in group 1 and 2 were compared to our previous study of normal healthy subjects, the retinal sensitivities were lower than expected for that age group. For group 1 and 2, the difference in retinal sensitivities were statistically significant (group 1: difference = 0.800 with standard error = 0.250, DF = 40,  $t = 3.202$ , 95% CI: 0.2950–1.3050,  $p = 0.0027$ ; group 2: difference = 1.490 with standard error = 0.418, DF = 40,  $t = 3.565$ , 95% CI: 0.6452–2.3348,  $p = 0.001$ ). However, there was no significant difference for group 3 (difference = 0.010 with standard error = 0.103, DF = 45,  $t = 0.097$ , 95% CI: -0.1968 to 0.2168,  $p = 0.9228$ ). Therefore, the decline in retinal sensitivity for the diabetes group is not due to the age factor but due to the diabetes itself. Metabolic pathways<sup>22</sup> and inflammatory mechanisms<sup>23</sup> due to hyperglycemia have been shown to play a crucial role in development of diabetic

retinopathy. The activation of these pathways and mechanisms leads to abnormalities in the neural retina (resulting in retinal neurodegeneration) and the capillary bed located in the inner retina (resulting in microangiopathic injury). Microperimetry measures the retinal light sensitivity of neural retina. When the retinal sensitivity is reduced, this is possibly due to neural damage. The results here indicate that neural damage possibly precedes clinical diabetic retinopathy.<sup>24,25</sup> The decline in retinal sensitivity in diabetics has been shown by other studies as well.<sup>26–28</sup>

The HbA1c values were significantly higher in the diabetes groups compared to the control group. Group 1 subjects had mean HbA1c values of  $6.5 \pm 0.51$ . This group had diabetes but no retinopathy. It has previously been shown that mild and moderate retinopathy were rare below HbA1c 6.6–7.0 and the prevalence increased 16–17-fold above this level of HbA1c.<sup>14</sup>

Our results showed that there was a relationship between HbA1c values and retinal sensitivity. Linear regression analysis showed that HbA1c values accounted for a 54.5% significant reduction in retinal sensitivity. It is also predicted that for every increase of 1 unit mmHg HbA1c values, there will be a decrease in retinal sensitivity in the central 10° retina of 0.64 dB.

Classically, diabetic retinopathy has been considered to be a microvascular complication caused by elevated blood glucose levels and metabolic pathways triggered by hyperglycemia. However, the retina is not primarily a vascular tissue. It is a neuronal tissue with a vascular supply, in which, the retinal neurons, glia, and retinal vasculature are interconnected to form a functional neurovascular unit with intricate molecular interactions.<sup>29</sup> As such, hyperglycemia likely affects the neuro-retina and its vasculature resulting in variable dysfunctions other than impairment of visual acuity. There is increasing evidence of early retinal neurodegeneration in diabetes, which may even precede the vascular changes.<sup>28</sup> The neuronal degeneration patterns have been observed in various animal models of diabetes, in which early retinal dysfunction has been demonstrated.<sup>29–32</sup>

## Conclusion

The data from this study revealed that there is a relationship between HbA1c values and 10° central retinal sensitivity in diabetic patients. HbA1c values accounted for a 54.5% significant reduction in retinal sensitivity. The reduction in retinal sensitivity was possibly due to neuronal damage which precedes visible fundus changes.

## Ethical approval

Ethical approval was obtained from Universiti Kebangsaan Malaysia Research and Ethics Committee (UKM 1.5.3.5/244/NN-118-2012) which follows the tenants of Helsinki. Written consent was obtained from all the participants.

## Funding

This research received no specific grant from any funding agency in the public, commercial, or not for-profit sectors.

## Conflicts of interest

The authors declare that they have no conflict of interest.

## Acknowledgements

The authors wish to thank the ophthalmologists and staff of Selayang Hospital eye specialist clinic for their excellent cooperation during the study. We would also like to thank all participants for volunteering to be part of this study.

## References

1. Klein R, Klein BE, Moss SE. Visual impairment in diabetes. *Ophthalmology*. 1984;91:1–9.
2. Ciulla TA, Amador AG, Zinman B. Diabetic retinopathy and diabetic macular edema: pathophysiology, screening, and novel therapies. *Diabetes Care*. 2003;26:2653–2664.
3. Sohn EH, van Dijk HW, Jiao C, et al. Retinal neurodegeneration may precede microvascular changes characteristic of diabetic retinopathy in diabetes mellitus. *PNAS*. 2016;E2655–E2664, <http://dx.doi.org/10.1073/pnas.1522014113>.
4. Roy MS, Rick ME, Higgins KE, McCulloch JC. Retinal cotton-wool spots: an early finding in diabetic retinopathy? *Br J Ophthalmol*. 1986;70:772–778.
5. Stem MS, Gardner TW. Neurodegeneration in the pathogenesis of diabetic retinopathy: molecular mechanisms and therapeutic implications. *Curr Med Chem*. 2013;20:3241–3250.
6. van Dijk HW, Verbraak FD, Stehouwer M, et al. Association of visual function and ganglion cell layer thickness in patients with diabetes mellitus type 1 and no or minimal diabetic retinopathy. *Vision Res*. 2011;51:224–228.
7. van Dijk HW, Verbraak FD, Kok PHB, et al. Early neurodegeneration in the retina of type 2 diabetic patients. *Invest Ophthalmol Vis Sci*. 2012;53:2715–2719.
8. Verma A, Raman R, Vaitheeswaran K, et al. Does neuronal damage precede vascular damage in subjects with type 2 diabetes mellitus and having no clinical diabetic retinopathy? *Ophthalmic Res*. 2012;47:202–207.
9. Tapp RJ, Zimmet PZ, Harper CA, et al. Diagnostic thresholds for diabetes: the association of retinopathy and albuminuria with glycaemia. *Diabetes Res Clin Pract*. 2006;73:315–321.
10. UK Prospective Diabetes Study (UKPDS) Group. Intensive blood-glucose control with sulphonylureas or insulin compared with conventional treatment and risk of complications in patients with type 2 diabetes. *Lancet*. 1998;352:837–853.
11. Ito C, Maeda R, Ishida S, et al. Correlation among fasting plasma glucose, two-hour plasma glucose levels in OGTT and HbA1c. *Diabetes Res Clin Pract*. 2000;50:225–230.
12. Saudek CD, Herman WH, Sacks DB, et al. A new look at screening and diagnosing diabetes mellitus. *J Clin Endocrinol Metab*. 2008;93:2447–2453.
13. Barr RG, Nathan DM, Meigs JB, Singer DE. Tests of glycemia for the diagnosis of type 2 diabetes mellitus. *Ann Intern Med*. 2002;137:263–272.
14. Sabanayagam C, Liew G, Tai ES, et al. Relationship between glycated haemoglobin and microvascular complications: Is there a natural cut-off point for the diagnosis of diabetes? *Diabetologia*. 2009;52:1279–1289.

15. Acton JH, Greenstein VC. Fundus-driven perimetry (microperimetry) compared to conventional static automated perimetry: similarities, differences, and clinical applications. *Can J Ophthalmol*. 2013;48:358–363.
16. Rohrschneider K, Bültmann S, Springer C. Use of fundus perimetry (microperimetry) to quantify macular sensitivity. *Prog Retin Eye Res*. 2008;27:536–548.
17. Wu Z, Ayton LN, Guymer RH, Luu CD. Comparison between multifocal electroretinography and microperimetry in age-related macular degeneration. *Invest Ophthalmol Vis Sci*. 2014;55:6431–6439.
18. Rohrschneider K, Bültmann S, Gluck R, et al. Scanning laser ophthalmoscope fundus perimetry before and after laser photocoagulation for clinically significant diabetic macular edema. *Am J Ophthalmol*. 2000;129:27–32.
19. Rohrschneider K, Springer C, Bültmann S, Volcker HE. Microperimetry-comparison between the microperimeter 1 and scanning laser ophthalmoscope-fundus perimetry. *Am J Ophthalmol*. 2005;139:125–134.
20. Midena E, Radin PP, Convento E, Cavarzeeran F. Macular automatic fundus perimetry threshold versus standard perimetry threshold. *Eur J Ophthalmol*. 2007;17:63–68.
21. Ismail SA, Sharanjeet-Kaur, Mutalib HA, Ngah NF. Macular retinal sensitivity using MP-1 in healthy Malaysian subjects of different ages. *J Optom*. 2015;8:266–272.
22. Brownlee M. Biochemistry and molecular cell biology of diabetic complications. *Nature*. 2001;414:813–820.
23. Tang J, Kern TS. Inflammation in diabetic retinopathy. *Prog Retin Eye Res*. 2011;30:343–358.
24. Chhablani J, Sharma A, Goud A, et al. Neurodegeneration in Type 2 diabetes: evidence from spectral-domain optical coherence tomography. *IOVS*. 2015;56:6333–6338.
25. Verma A, Rani PK, Raman R, et al. Is neuronal dysfunction an early sign of diabetic retinopathy? Microperimetry and Spectral Domain Optical Coherence Tomography (SD-OCT) Study in individuals with diabetes, but no diabetic retinopathy. *Eye*. 2009;23:1824–1830.
26. Lobefalo L, Verrotti A, Mastropasqua L, et al. Blue-on-yellow and achromatic perimetry in diabetic children without retinopathy. *Diabetes Care*. 1998;21:2003–2006.
27. Parravano M, Oddone F, Mineo D, et al. The role of Humphrey Matrix testing in the early diagnosis of retinopathy in type 1 diabetes. *Br J Ophthalmol*. 2008;92:1656–1660.
28. Jackson GR, Scott IU, Quillen DA, et al. Inner retinal visual dysfunction is a sensitive marker of non-proliferative diabetic retinopathy. *Br J Ophthalmol*. 2012;96:699–703.
29. Antonetti DA, Klein R, Gardner TW. Diabetic retinopathy. *N Engl J Med*. 2012;366:1227–1239.
30. Simó R, Hernández C, European Consortium for the Early Treatment of Diabetic Retinopathy (EUROCONDOR). Neurodegeneration in the diabetic eye: new insights and therapeutic perspectives. *Trends Endocrinol Metab*. 2014;25:23–33.
31. Villarreal M, Ciudin A, Hernández C, Simó R. Neurodegeneration: an early event of diabetic retinopathy. *World J Diabetes*. 2010;1:57–64.
32. Barber AJ, Gardner TW, Abcouwer SF. The significance of vascular and neural apoptosis to the pathology of diabetic retinopathy. *Invest Ophthalmol Vis Sci*. 2011;52:1156–1163.