

Published in final edited form as:

*Nat Rev Cancer*. 2018 September 1; 18(9): 533–548. doi:10.1038/s41568-018-0038-z.

## Every step of the way: integrins in cancer progression and metastasis

Hellyeh Hamidi<sup>1</sup> and Johanna Ivaska<sup>1,2</sup>

<sup>1</sup>Turku Centre for Biotechnology, University of Turku and Åbo Akademi University, Turku 20520, Finland <sup>2</sup>Department of Biochemistry, University of Turku, Turku 20520, Finland

### Abstract

Cell adhesion to the extracellular matrix is fundamental to tissue integrity and human health. Integrins are the main cellular adhesion receptors that through multifaceted roles as signalling molecules, mechanotransducers and key components of the cell migration machinery are implicated in nearly every step of cancer progression from primary tumour development to metastasis. Altered integrin expression is frequently detected in tumours, where integrins have roles in supporting oncogenic growth factor receptor (GFR) signalling and GFR-dependent cancer cell migration and invasion. In addition, integrins determine colonization of metastatic sites and facilitate anchorage-independent survival of circulating tumour cells. Investigations describing integrin engagement with a growing number of versatile cell surface molecules, including channels, receptors and secreted proteins, continue to lead to the identification of novel tumour-promoting pathways. Integrin-mediated sensing, stiffening and remodelling of the tumour stroma are key steps in cancer progression supporting invasion, acquisition of cancer stem cell characteristics and drug resistance. Given the complexity of integrins and their adaptable and sometimes antagonistic roles in cancer cells and the tumour microenvironment, therapeutic targeting of these receptors has been a challenge. However, novel approaches to target integrins and antagonism of specific integrin subunits in stringently stratified patient cohorts are emerging as potential ways forward.

### Introduction

The main cell adhesion receptors for components of the extracellular matrix (ECM), the integrins, are a family of 24 transmembrane heterodimers generated from a combination of 18 $\alpha$  integrin and 8 $\beta$  integrin subunits. Integrins can be classified into receptors recognizing Arg-Gly-Asp (RGD) peptide motifs, collagen receptors, laminin receptors and leukocyte-specific integrins<sup>1</sup>. However, integrins also recognize numerous other physiological ligands

---

johanna.ivaska@utu.fi.

#### Contributions

J.I. researched the data for the article and wrote the body of the manuscript before submission. H.H. assembled the table, drafted the display items and contributed to writing of the manuscript before submission. J.I. and H.H. equally contributed to revising and editing of the manuscript.

#### Competing interests

The authors declare no competing interests.

and serve as receptors for snake venoms, viruses and other pathogens<sup>2,3</sup>. While some integrins bind to only specific ECM ligands (for example,  $\alpha 5\beta 1$  integrin to fibronectin), others exhibit a broader ligand-binding repertoire overlapping with other integrin heterodimers (for example,  $\alpha v\beta 3$  integrin binds to fibronectin, vitronectin, fibrinogen and thrombospondin, to name a few)<sup>1</sup>. Engagement of the same ligand by different integrin heterodimers can trigger distinct signalling in the cell and thus the pattern of integrin expression on the cell surface is key to determining cell behaviour in response to microenvironmental influences. Integrins heterodimerize in the endoplasmic reticulum and, following further post-translational modifications in the Golgi, are trafficked to the cell surface in an inactive conformation<sup>4</sup>, where they can become activated to engage the ECM. Integrins are unique multidirectional signalling molecules (Box 1). Integrin activation and binding to the ECM trigger the recruitment of the so-called adhesome: a complex array of signalling, scaffolding and cytoskeletal proteins engaging directly or indirectly with integrin cytoplasmic tails<sup>5,6,7</sup>. Together, these adhesion constituents represent a complex and highly dynamic machinery responsible for regulating aspects of cell fate such as survival, migration, polarity and differentiation<sup>8</sup>. Therefore, dysregulated integrin-mediated adhesion and signalling is a precursor in the pathogenesis of many human diseases, including bleeding disorders, cardiovascular disease and cancer<sup>8</sup>.

Altered integrin expression patterns have been linked to many types of cancer<sup>9,10,11</sup>. Supplementary Table 1 summarizes some purported associations between the expression of specific integrin subunits or integrin heterodimers and the extent of neoplastic progression, patient survival or response to therapy; however, it is worth noting that most of the observed clinical data are correlative, rather than direct evidence of a role for specific integrins in the indicated cancers. Moreover, some of these studies provide contradictory data either within the same cancer type or in relation to different cancers for the same integrin molecules. These discrepancies may be explained on several levels by factors, including challenges in acquiring patient samples at equivalent stages of disease and in classifying disease state based on different methodologies; the reported integrin expression profiles possibly being a dynamic property of the disease, with switching between integrin heterodimers, binding of different integrins to the same ligand (potentially occurring in response to treatment or microenvironmental cues<sup>12,13,14</sup>) and fluctuation of integrin levels at different stages of disease progression; heterogeneity in patient samples; and altered integrin expression, although evident in many cancers, not being a direct readout of integrin signalling and therefore possibly not being the defining feature of the disease.

Indeed, integrin function in cells is regulated by more than mere expression; multiple additional levels of regulation exist. Integrins are constantly endocytosed and recycled back to the plasma membrane, the kinetics of which are frequently altered in cancer cells, resulting in a change in the normal ratios of the receptors between the cell surface and endosomal pools<sup>4,15</sup>. Furthermore, integrin activity is tightly regulated in normal cells (Box 1), and aberrations in integrin activity confer cells with oncogenic properties through altered adhesion dynamics and increased integrin signalling<sup>16</sup>. A vast collection of literature exists regarding altered integrin expression in different cancer types (Supplementary Table 1), the applicability of integrins as therapeutic targets<sup>10,11,17</sup> and, given that integrin profiles are used to identify tumour-initiating cells, the potential role of integrins in cancer stem

cells<sup>9,11</sup>. In this Review, we discuss the contribution of integrins to the different steps of the metastatic cascade with a special focus on key mechanisms identified in the past 5 years that underlie the ability of integrins to drive invasive protrusions, influence tumour–stroma crosstalk, support the formation of metastases and induce drug resistance in solid tumours. However, it is important to note that integrins play vital roles in other cancer-relevant processes not described in this Review, including white blood cell trafficking and activation, chronic inflammation, immune mimicry and angiogenesis, which ultimately determine disease state.

Despite the disappointing outcome of previous clinical trials targeting integrins, the continued drive to better understand the role of these receptors in cancer progression could lead to the development of innovative targeting approaches and a revival in the field.

## Integrins and the metastatic cascade

Integrins and integrin-dependent processes have been implicated in almost every step of cancer progression, including cancer initiation and proliferation, local invasion and intravasation into vasculature, survival of circulating tumour cells (CTCs), priming of the metastatic niche, extravasation into the secondary site and metastatic colonization of the new tissue (Fig. 1). For most solid tumours, the metastatic cascade begins with cancer cells breaching the underlying basement membrane. This process is considered to require proteolytic activity, and integrins contribute by upregulating the expression of matrix metalloproteinase genes and facilitating protease activation and function at the ECM interface<sup>18</sup>. Invasive carcinomas penetrate the stroma and migrate into the surrounding tissue as individual cells or as cell clusters by multiple different integrin-dependent mechanisms. In addition, cancer-associated fibroblasts (CAFs) can contribute to cancer progression via several integrin-linked mechanisms. CAFs can lead invasion by generating pro-migratory tracks through the stromal ECM<sup>19</sup>, by depositing fibronectin<sup>20,21</sup>, by regulating fibronectin alignment<sup>22</sup> or by physically pulling cancer cells out of the primary tumour<sup>23</sup>.

CTCs are readily detected in patients with cancer, suggesting that cancer cells are constantly entering the circulation from the primary tumour<sup>24</sup>. While normal epithelial cells undergo anoikis<sup>25</sup>, CTCs undergo anchorage-independent growth and display anoikis resistance through pathways involving altered integrin signalling<sup>26</sup>. For successful metastasis, CTCs must attach within the vasculature of distant organs and extravasate into the perivascular tissue. Thrombus formation is thought to support tumour cell extravasation by recruiting fibronectin to activate integrins<sup>27,28</sup>. Finally, following successful extravasation, integrin contacts with the ECM in the perivascular tissue dictate whether the seeded cancer cells continue to proliferate or become dormant<sup>24</sup>.

## The primary tumour and microenvironment

### Integrins as tumour promoters and tumour suppressors

As depicted in Supplementary Table 1, the reported links between integrin expression and cancer are highly dependent on the tumour type and on the state of the disease, complicating the applicability of these receptors as therapeutic targets and underlying the need for patient

stratification on the basis of integrin profiles in future studies. For example, while most  $\beta 1$  integrins, and more specifically  $\alpha 3\beta 1$  integrin, are necessary for mammary tumorigenesis<sup>29,30</sup>,  $\alpha 2\beta 1$  integrin is a metastasis suppressor in breast cancer<sup>31</sup>, and laminin-binding integrins have both growth-promoting and growth-inhibiting functions (reviewed in ref.<sup>32</sup>). Integrins that activate transforming growth factor- $\beta$  (TGF $\beta$ ) may be tumour suppressors<sup>33</sup> until the cancer becomes refractory to the anti-proliferative effects of TGF $\beta$ ; after this event, the same integrins can drive tumour progression<sup>34</sup>. There is also crosstalk between integrins, which determines their response in activating TGF $\beta$ . Genetic depletion of  $\beta 1$  integrin induces a compensatory-like upregulation of  $\beta 3$  integrins that may promote activation of TGF $\beta$  and TGF $\beta$ -mediated epithelial-to-mesenchymal transition (EMT) in breast cancer cells<sup>35</sup>. However,  $\beta 3$  integrin overexpression alone was not sufficient to replicate the pro-metastatic phenotype observed in response to  $\beta 1$  integrin loss, suggesting that other factors are involved in regulating TGF $\beta$  signalling. Increased expression of tumour-promoting integrins correlates with poor prognosis; the underlying contribution of these integrins to cancer progression varies but can include support of cancer invasion, which occurs in part by cooperating with or upregulating proteases<sup>36,37,38,39,40</sup> or by switching the integrin-ECM linkage. For example, upregulation of  $\alpha 5\beta 1$  integrin and fibronectin is linked to poor prognosis and tumour progression in lung cancer<sup>41</sup>. Furthermore, upon loss of epithelial monolayer integrity,  $\alpha 5\beta 1$  integrin becomes engaged by its specific adaptor protein zonula occludens 1 (ZO1)<sup>42</sup>, to drive directional cancer cell migration<sup>42</sup> and alter the mechanical properties of  $\alpha 5\beta 1$  integrin-fibronectin links by increasing ligand recruitment but reducing resistance to force<sup>43</sup>. Integrins also facilitate tumour progression by promoting cancer cell stemness<sup>9</sup> and/or by acting alone or in synergy with growth factor receptors (GFRs) to promote survival and growth signalling<sup>10,44,45,46,47,48,49</sup>. For example, in breast and lung cancer, increased  $\alpha \nu \beta 3$  integrin expression and downstream activation of SRC correlate with a cancer stem cell phenotype, anoikis resistance and increased metastasis<sup>50,51,52</sup>. In the case of growth factors, fibronectin binding to  $\alpha 5\beta 1$  integrin is sufficient to induce ligand-independent activation of the receptor tyrosine kinase (RTK) MET<sup>53</sup> while  $\alpha 6\beta 4$  integrin regulates MET oncogenic signalling<sup>49</sup>.

### Cooperation between cancer cells and stromal cells

Cancer progression is not an isolated event of accumulating mutations and ensuing malignant traits in the primary tumour. Secreted factors from cancer cells profoundly alter the biology and composition of the underlying stroma by attracting immune cells, triggering angiogenesis and inducing CAF activation. These events result in numerous tumour-promoting signals from the tumour microenvironment (TME)<sup>20</sup>. In this Review, we focus specifically on modifications in the ECM such as stiffening (desmoplasia), owing to excess matrix protein deposition, and remodelling during cancer invasion. CAF activation is associated with alterations in integrin function, the actomyosin cytoskeleton and cellular mechanical properties<sup>21</sup>, which result in effective remodelling of the TME to support tumour progression. In addition, crosstalk between cancer cells, CAFs, immune cells and the vasculature is likely to be involved in generating an organ-specific, cancer-driven ECM, with substantial changes in ECM composition and topological structure<sup>54,55</sup>.

Under normal conditions, each tissue has a tightly regulated, specific optimal stiffness<sup>56</sup>, which is sensed by cells via integrins and the cytoskeleton. Thus, integrins are important mechanoreceptors and, in conjunction with other mechanoresponsive adhesion proteins such as the integrin-activating protein talin, vinculin and CRK-associated substrate (CAS; also known as BCAR1)<sup>57,58</sup>, convert mechanical signals into biochemical ones. Desmoplasia is common in many cancer types, including breast and pancreatic cancers, and facilitates cancer cell proliferation via multiple mechanisms, many of which are linked to integrins<sup>59</sup>. Increased stiffness correlates with higher  $\beta 1$  integrin activity in cancer cells, culminating in increased focal adhesion kinase (FAK) and RHOA–RHO-associated protein kinase (ROCK) signalling, two important pro-oncogenic elements in breast cancer<sup>60,61</sup>. In accordance, higher levels of  $\beta 1$  integrin, active FAK and active AKT are detected in invasive fronts and correlate with increased stiffness in experimental mouse breast cancer models and in invasive human breast cancer<sup>62</sup>. ECM stiffness supports cell proliferation by increasing, through direct or indirect epigenetic regulation, two transcriptional activators, nuclear yes-associated protein (YAP) and transcriptional co-activator with PDZ-binding motif (TAZ; also known as WWTR1), that operate in the Hippo pathway to induce the expression of pro-survival genes<sup>63,64,65</sup>. Mechanosensing by integrins and adhesion reinforcement by talin and vinculin support nuclear YAP localization<sup>66</sup>. The link between matrix rigidity, mechanosensing and nuclear YAP–TAZ is well established<sup>63,64,65</sup>. By contrast, the exact signalling pathways activating YAP–TAZ downstream of integrins in cancer are not fully understood and remain somewhat controversial. In sparse fibroblasts, cultured in the presence of serum, nuclear localization of YAP is integrin independent<sup>67</sup>, whereas in serum-starved breast epithelial MCF10A cells, fibronectin engagement appears to trigger nuclear YAP; additionally, in mammary fibroblasts, inhibition of  $\alpha v$  integrins with the RGD peptide-based antagonist cilengitide inhibits YAP transcriptional activity<sup>68,69</sup>. Nevertheless, a requirement for SRC and/or FAK activity has been reported in numerous studies<sup>65,67,68,69,70</sup>, and a recent study unveiled a feedforward mechanism whereby increased cellular spreading via RHOA activates a YAP-dependent transcriptional programme upregulating genes encoding integrins and focal adhesion docking proteins<sup>71</sup>.

CAFs and their integrins contribute to generating a stiffer, altered ECM by promoting the secretion of ECM components such as collagen and fibronectin, and even more importantly by altering ECM architecture by adhering to the ECM and generating contractile forces to remodel the matrix. CAFs increase ECM stiffening by introducing increased crosslinking through the activity of lysyl oxidase (LOX) enzymes<sup>20,72</sup>. This is most likely linked to the integrins expressed on CAFs, given that several  $\alpha v$  integrins activate TGF $\beta$ <sup>73</sup>, a known activator of LOX expression<sup>74</sup>, and that  $\alpha 2\beta 1$  integrin binding to collagen induces LOX expression<sup>75</sup>. Such a structurally altered ECM is sensed by cancer cells and facilitates their growth by promoting gene transcription and signalling<sup>65,76</sup>.

## Cancer cell migration and invasion

As the principal receptors for ECM molecules, integrins are critically important in regulating cell motility in normal physiological processes, such as development and wound healing<sup>77</sup>, and during cancer dissemination. The major emphasis of research into cancer cell migration has been on the pursuit of understanding cancer cell invasion and metastasis. However,

increased cell motility could also be an important contributor to tumour growth, as demonstrated by mathematical simulations coupling cell proliferation to cell motility<sup>78</sup>. Tumours with non-motile cells undergo rapid growth inhibition owing to steric hindrance and crowding, whereas local cell dispersal allows tumours to expand and reach higher growth rates<sup>78</sup>. The molecular and biomechanical details of cell movement in 2D in vitro settings are well defined, in which integrin-mediated ECM contacts function as so-called molecular clutches that propel the cell forward by converting actin polymerization at the protruding plasma membrane into traction force<sup>79,80,81</sup>. However, owing to the complexity of the 3D in vivo microenvironment, the dynamic interplay between different cells and the unique features (for example, genomic profile, tumour origin, environment and tumour heterogeneity) of each cancer type, the mechanisms governing cancer cell motility in vivo remain much more poorly understood. What is evident is that cancer cell migration is characterized by remarkable plasticity and crosstalk between integrins, other cell adhesion receptors and the actin cytoskeleton.

### Altered ECM guides migration and invasion

In addition to providing a stiffer microenvironment that favours cancer progression, the cancer-associated ECM is a rich source of other pro-migratory and pro-invasive cues. Second-harmonic generation microscopy analysis, which detects fibrillar collagen structures, in mouse breast tumour models suggests that collagen reorganization at the tumour–stromal interface is a relevant parameter for predicting breast cancer dissemination<sup>82</sup>. In addition, elevated collagen deposition in the ECM augments tumour-progressive signals, intravasation and metastasis of oestrogen receptor- $\alpha$  (ER $\alpha$ )-positive mouse mammary tumour cells injected into the mammary fat pads of recipient mice<sup>83</sup>. These findings are not restricted to breast cancer. In pancreatic adenocarcinoma, a highly fibrotic cancer type, increased collagen alignment promotes cancer cell migration and serves as a negative prognostic factor<sup>84,85</sup>. Moreover, the thickness of collagen fibres in the tumour stroma also appears to be linked to survival in patients with pancreatic ductal adenocarcinoma (PDAC)<sup>86</sup>. Accordingly, in KRAS-driven mouse models of PDAC with constitutively active  $\beta$ 1 integrin and deletion of epithelial TGF $\beta$  signalling, tumour progression is accelerated and correlates with increased deposition of thick collagen fibres and tissue tension<sup>86</sup>. In fact, altered collagen deposition, which is presumably mediated by collagen-binding integrins and contractility of stromal cells, may be a general hallmark of poor prognosis in cancer. Recent work analysing collagen fibre structure within the tumour stroma of head and neck, oesophageal and colorectal cancers suggests a significant correlation between activated myofibroblasts, collagen fibre elongation and poor survival in all three cancer types<sup>87</sup>. However, in the microenvironment of the brain, which is poor in ECM, the presence of collagen fibres has been associated with better survival of patients with glioblastoma<sup>88</sup>.

In addition to contraction and remodelling of the existing collagen stroma to promote cancer cell invasion, CAFs have been shown to drive invasion by depositing fibronectin in an  $\alpha$ v $\beta$ 3 integrin-dependent manner in colon cancer<sup>21</sup>. In this context, contractile forces exerted by CAFs are insufficient to promote invasion in the absence of a fibronectin network<sup>21</sup>. Another fibronectin receptor,  $\alpha$ 5 $\beta$ 1 integrin, has also been reported to play a role in pro-migratory fibronectin alignment by CAFs<sup>22</sup>. In addition, cancer-specific intracellular-binding partners



of  $\alpha 5\beta 1$  integrin can also promote cell invasion by sensitizing cancer cells to changes in ECM composition. Coupling of  $\alpha 5\beta 1$  integrin to the pro-metastatic isoform of the actin-regulatory protein mammalian enabled homologue (MENA; also known as ENAH), termed MENA(INV), which is frequently reported to be highly expressed in invasive breast cancer cells, supports  $\alpha 5\beta 1$  integrin 'outside-in' signalling to FAK<sup>89</sup> (Box 1) and tumour cell haptotaxis towards high fibronectin concentrations such as those typically seen in the perivascular space and in the periphery of breast tumour tissues<sup>90</sup>.

Recently, pharmacological inhibition or RNAi-mediated or genetic knockout of AMP-activated protein kinase (AMPK), an important metabolic sensor, was shown to trigger elevated integrin activity and fibronectin matrix deposition in normal fibroblasts by increasing tensin expression and the formation of  $\alpha 5\beta 1$  integrin–tensin complexes<sup>91,92</sup>. While the link between AMPK activity and fibronectin deposition in CAFs remains to be fully explored, AMPK activation with metformin, a widely used anti-diabetic drug, has been demonstrated to reduce desmoplasia and tumour growth in a PDAC mouse model<sup>93</sup>. Furthermore, in contrast to the well-established link between talin-induced integrin activation and mechanoresponsive growth signalling to YAP<sup>66,67,68,69,70,71</sup>, the relevance of tensins as integrin activators in cancer cells remains to be investigated, and their possible implication in mechanotransduction is not known.

### Integrin involvement in different modes of migration in cancer

Cancer cell invasion involves complex crosstalk between distinct receptor systems. In addition to integrin–ECM contacts, cancers, in particular, invasive carcinomas, exhibit different degrees of cell–cell contacts, perhaps reflecting the various modes of cell migration observed in vivo (which range from integrin-mediated single-cell motility to collective cell migration as sheets or strands)<sup>94,95</sup>. A substantial body of evidence has linked EMT, loss of E-cadherin-mediated adherens junctions and increased integrin-mediated adhesions to dissemination of individual cancer cells<sup>96</sup>. However, in collectively migrating carcinomas, invasion is a delicate balance between cell–cell and cell–ECM adhesions and requires crosstalk between junctional proteins and proteins regulating integrin–ECM adhesions. For example, in squamous cell carcinoma (SCC), both loss of E-cadherin at cell–cell adhesions<sup>97</sup> and overexpression of E-cadherin, which normally localizes to cell–cell junctions, have been reported to inhibit collective migration and invasion<sup>98</sup>. Furthermore, cell–ECM adhesions are coupled to cell–cell adhesions via multiple distinct crosstalk pathways<sup>98,99</sup>. Integrin-mediated adhesion to fibronectin triggers a negative feedback signal that hinders the formation of E-cadherin-mediated cell–cell adhesions<sup>100</sup>. Reintroduction of  $\beta 1$  integrin to  $\beta 1$  integrin-null epithelial cells triggers loss of cell–cell contacts and scattering of individual cells in a manner dependent upon  $\beta 1$  integrin activity and ligand binding<sup>101</sup>, and this result is indicative of an inhibitory role for integrin–ECM adhesions in the regulation of cell–cell junctions. Accordingly, integrin outside-in signalling can disrupt cell–cell adhesion by increasing actomyosin contractility<sup>102</sup> and by influencing E-cadherin junctional stability through FAK and SRC signalling. In addition, SRC activity induces E-cadherin endocytosis to destabilize adherens junctions<sup>98</sup>. While the extent of crosstalk between integrins and cell–cell junctions is likely to be influenced by the cell type and the

local TME, it is clear that this interdependence is an important regulator of the apparent plasticity of cancer cell migration and invasion *in vivo*.

In individually migrating cells, integrins are associated with another switch between migration modes. Particularly evident in melanoma, cells in a 3D ECM can switch between integrin-dependent mesenchymal migration and integrin-independent amoeboid migration<sup>103</sup> (reviewed in refs<sup>104,105</sup>). The latter is driven by strong actomyosin contractility and can be induced in cells that normally adopt the mesenchymal migration mode by global inhibition of integrins and matrix-degrading proteases<sup>104,105</sup>. Alternatively, amplification of MET can trigger strong activation of RHO signalling and integrin internalization, resulting in amoeboid cell morphology in gastric cancer<sup>47</sup>.

### Integrin transport and invasion

Integrin traffic is an important mechanism contributing to dynamic adhesion turnover, actin remodelling and membrane protrusion and is therefore central to the process of cell migration<sup>15</sup>. Interestingly, trafficking of integrin heterodimers with overlapping ligand specificity, such as  $\alpha 5\beta 1$  integrin and  $\alpha v\beta 3$  integrin that both bind fibronectin, can trigger very different cell motility outcomes. It is well established that preferential recycling of  $\alpha v\beta 3$  integrin over  $\alpha 5\beta 1$  integrin triggers directional cell migration in 2D, whereas increased  $\alpha 5\beta 1$  integrin recycling drives random cell motility in 2D and correlates with increased 3D invasion<sup>14,106</sup>. Interestingly, retrograde transport of inactive, non-ligand-bound  $\beta 1$  integrin heterodimers, but not  $\beta 3$  integrins, from the plasma membrane to the Golgi, followed by polarized delivery of the receptor to the cell front, has been linked to persistent cell migration in normal epithelial cells<sup>107</sup>. However, this pathway remains to be validated in other cell types, and its role in directional motility of cancer cells has not been studied. These examples highlight an antagonistic relationship between  $\alpha 5\beta 1$  integrin and  $\alpha v\beta 3$  integrin heterodimers during cell migration in 2D that may also be reliant on receptor activation state.

The identification of an  $\alpha$ -integrin subunit-specific clathrin-adaptor-binding motif in a subset of  $\alpha$ -integrin subunits, including  $\alpha 2$  integrin,  $\alpha 3$  integrin and  $\alpha 6$  integrin<sup>108</sup>, which have been reported to have both cancer-inhibiting and cancer-promoting roles (that is, such roles have been identified for  $\alpha 2\beta 1$  integrin,  $\alpha 3\beta 1$  integrin and  $\alpha 6$  integrin pairs<sup>31,54</sup>), could provide a mechanism for regulating the trafficking of these receptors independently of other  $\alpha$ -integrin- $\beta 1$  integrin pairs that bind to the same ligand and possibly explain some of the context-dependent and cell type-specific behaviour of these integrins in cancer.

Integrin-heterodimer-specific trafficking has already been linked to cancer cell migration and invasion. Among the genetic mutations prevalent in human cancer, mutant p53 expression is strongly linked to increased invasion and metastasis<sup>109,110,111</sup>. Interestingly, gain-of-function p53 mutant proteins increase  $\alpha 5\beta 1$  integrin recycling, which, in turn, is linked to generation of RHO-driven invasive cellular protrusions in a fibronectin-rich 3D microenvironment<sup>106</sup>. Furthermore, mutant p53-mediated  $\alpha 5\beta 1$  integrin recycling has been demonstrated to promote actin-related protein 2/3 (ARP2/3) complex-independent ovarian cancer cell invasion *in vivo*, a process that is regulated by the formation of FH1/FH2 domain-containing protein 3 (FHOD3)-dependent filopodia-like protrusions<sup>112</sup>. In addition,



mutant p53 increases the expression of the non-conventional myosin motor myosin X<sup>113</sup>, which binds directly to integrin and transports it to filopodia tips<sup>114</sup>. Thus, mutant-p53-driven integrin recycling and overexpression of an integrin-transporting motor protein could synergistically facilitate cancer cell invasion. In concordance, high levels of myosin X correlate with poor prognosis in cohorts of patients with breast cancer and with metastasis in mouse models of the disease<sup>113,115</sup>.

Integrins sense both chemical and physical properties of the ECM, and cells can dynamically increase the affinity of integrins for their ligands. For example, integrin-mediated adhesion at filopodia tips and filopodia formation in breast cancer cells are influenced by matrix composition<sup>116</sup>. In addition, integrin activation at filopodia tips is critical for filopodia stabilization and for the capacity to direct focal adhesion maturation via a mechanism involving voltage-dependent calcium channels and integrin downstream signalling<sup>117</sup>. Integrins are also important components of invasive structures called invadopodia or invadosomes found in cancer cells in 2D<sup>118,119</sup>. While the existence of invadopodia in 3D remains somewhat debated, numerous studies have linked increased numbers of invadopodia-like structures with increased ECM degradation and invasive capacity in 3D and in vivo<sup>120</sup>.

## Giving rise to metastasis

A major challenge for cancer cells, and possibly the most critical step in cancer progression, is survival within the vasculature for long enough to home to a distant site that permits dissemination. Here, we focus on highlighting recently emerged integrin functions in this step.

## Integrin endosomal signalling in cancer cell survival and anoikis suppression

Classically, integrins and their cancer-regulatory functions have been considered to be restricted to the plasma membrane and to signalling from focal adhesions. However, recent studies have challenged these views and identified novel mechanisms of integrins promoting anchorage-independent survival and metastasis in unconventional ways (Fig. 2). Even though the exact trigger for endocytosis of active integrins is unknown, one hypothesis has been that, upon matrix degradation, loss of ECM tension enables uptake of active integrins bound to ligand fragments. In accordance, active integrins and ECM ligands like fibronectin are readily detected in endosomes in cancer cells<sup>121,122</sup>. Importantly, active FAK localizes to active  $\beta 1$  integrin-positive endosomes<sup>45,123</sup>, and at least in reconstituted systems, integrin-containing endosomes have the capacity to recruit and activate FAK on endomembranes<sup>45</sup>. In adherent cells, FAK activity on endosomes maintains integrin activity by facilitating talin 1 recruitment to endosomes<sup>123</sup>. In normal detached cells, endosomal integrin signalling prolongs FAK activity and in breast cancer cells supports anchorage-independent growth and metastasis<sup>45</sup>.

Integrins can also function in a ligand-independent manner to support cell survival in suspension and prolong oncogenic signalling. Activation of MET by hepatocyte growth factor (HGF) induces co-endocytosis of MET and  $\beta 1$  integrins<sup>44,47</sup>. Unexpectedly, the  $\beta 1$  integrin within these MET-containing endosomes is maintained in an active conformation,

even in the absence of ECM ligands, and in this active form it supports prolonged MET signalling from the p52 isoform of SHC-transforming protein 1 (p52-SHC) to ERK<sup>44</sup>. This integrin–MET ‘inside-in’ signalling is necessary for oncogenic MET to drive anchorage-independent growth and metastasis in a mouse model using NIH-3T3 fibroblasts overexpressing mutant MET<sup>44</sup> (Fig. 2 and Box 1). Even more unexpectedly, a recent study suggested that MET displaces  $\alpha 5$  integrin from  $\beta 1$  integrin to form a MET– $\beta 1$  integrin complex in breast cancer and glioblastoma, particularly in therapy-resistant invasive glioblastomas<sup>124</sup>. It is currently unclear whether this unorthodox integrin heterodimer is implicated in the previously reported requirement for a functional  $\beta 1$  integrin in MET-driven oncogenic signalling<sup>44</sup>. Nevertheless, the multiple reported links between  $\beta 1$  integrin and  $\beta 4$  integrin and oncogenic MET signalling<sup>44,47,49,53,125</sup> suggest that targeting these integrins would provide some benefit in treating MET-dependent carcinomas.

While the biology and cancer relevance of integrin endosomal signalling alone or in conjunction with GFRs remain to be studied in detail in relevant *in vivo* models, the role of integrins in anoikis resistance via other mechanisms is well established. ECM-induced integrin outside-in signalling entails ligand engagement and receptor clustering (Box 1). In non-anchored cells, clustering of most integrins on the plasma membrane by ECM molecules is lost. Furthermore, in the absence of matrix adhesion, clustering of other receptors like epidermal GFR (EGFR) is also reduced<sup>126</sup>. In normal cells, such events are sufficient to trigger anoikis. However, upregulation of specific integrins can confer anoikis resistance.  $\alpha \nu \beta 3$  integrin has the unique ability to maintain receptor clustering in non-adherent cells<sup>51</sup>. This enables  $\alpha \nu \beta 3$  integrin to confer anoikis resistance to cancer cells by recruiting SRC to the  $\beta 3$  integrin subunit cytoplasmic tail, leading to SRC activation, CAS phosphorylation and cell survival<sup>51</sup>. Interestingly, in contrast to the anoikis resistance induced by endosomal signalling of  $\beta 1$  integrins, this  $\alpha \nu \beta 3$  integrin-mediated anoikis resistance mechanism appears independent of FAK activation<sup>51</sup>(Fig. 2.)

In addition, there are reports suggesting that integrins can also provide anoikis resistance by binding to non-structural ECM components. Members of the CCN family of matricellular proteins, including cysteine-rich angiogenic inducer 61 (CYR61), harbour several binding sites for integrins and heparan sulfate proteoglycans and are secreted by cancer cells and stromal cells into the TME<sup>127</sup>. Elevated CYR61 levels are correlated with a more advanced phenotype in breast cancer<sup>128</sup>. In triple-negative breast cancer cell lines, CYR61 supports metastasis and attenuates anoikis by activating  $\beta 1$  integrins and AMPK signalling independently of AKT, FAK and ERK1 and/or ERK2 activation<sup>129</sup>. Secreted galectin 3 is a carbohydrate-binding protein that promotes integrin endocytosis in adherent cells by interacting with *N*-glycans on the integrin extracellular domains<sup>130</sup>. By contrast, galectin 3 mediates anchorage-independent clustering of  $\alpha \nu \beta 3$  integrin, giving rise to membrane-proximal KRAS clustering, which enables numerous oncogenic functions of activated KRAS, including macropinocytosis<sup>131</sup>, cancer cell stemness and resistance to EGFR inhibitors<sup>132</sup>(Fig. 2). Galectin 3– $\alpha \nu \beta 3$  integrin clustering was recently described as an underlying mechanism driving KRAS addiction in tumour cells, and inhibition of galectin 3 was identified as a potential strategy to target KRAS-addicted (KRAS-G12D mutant) lung and pancreatic cancers<sup>133</sup>. Oncogenic KRAS (KRAS-G12V) can also induce anoikis resistance in normal kidney epithelial cells by increasing  $\alpha 6$  integrin expression. When

coupled to ectopic overexpression of  $\alpha v$  integrins, the KRAS– $\alpha 6$  integrin– $\alpha v$  integrin axis was sufficient to transform these cells into a highly invasive phenotype characterized by EMT-like features in vitro<sup>134</sup>.

### Integrins and priming the metastatic niche

Exosomes, the small membrane-bound vesicles actively shed by both normal and cancerous cells<sup>135</sup>, regulate cell–cell communication by horizontal transfer of RNAs and proteins<sup>136</sup>. Integrins are the most highly expressed receptors on the surface of exosomes and were recently shown to have a functional role in guiding exosomes to particular tissue sites to act as ‘primers’ of the metastatic niche (Fig. 2) and support the propensity of different cancer types to metastasize to specific organs<sup>137</sup>. In particular, lung-tropic cancer cells were found to secrete exosomes rich in  $\alpha 6\beta 1$  integrins and  $\alpha 6\beta 4$  integrins, whereas liver-tropic cancer cells shed predominantly  $\alpha v\beta 5$  integrin-positive exosomes. When isolated from cancer cells and injected into mice, the biodistribution of these exosomes was found to match the organotropic dissemination of the cell line of origin. Furthermore, exosome uptake by resident cells within the target tissue was suggested to prime the distant site in support of cancer cell survival by triggering the expression of specific ECM components and pro-inflammatory S100 proteins<sup>137</sup> (Fig. 2). However, the general applicability of this mechanism in cancer metastasis remains to be validated in vivo for other models of metastasis and for other cancer types.

### Integrins in extravasation

For enduring CTCs, the next critical step in metastasis is extravasation, and this is dependent on multiple factors. For example, the permeability and integrity of the vascular endothelium determine the rate of extravasation in many organs. Several mechanisms involving platelet-released ATP, inflammatory mediators and cancer cell-secreted growth factors and proteases have been implicated in the regulation of capillary wall permeability<sup>24</sup>. Integrin expression both on cancer cells and on endothelial cells has also been implicated in extravasation (Fig. 3). Endothelial cells use integrins to interact with their underlying basement membrane. These cell–ECM contacts combined with protein tyrosine kinase-induced signalling are important regulators of vessel integrity<sup>138</sup>. In cancer, increased angiotensin 2 (ANG2) signalling in endothelial cells, in conjunction with reduced levels of the angiotensin receptor TIE2 (also known as TEK), increases vascular permeability, and ANG2 blocking antibodies can inhibit metastasis<sup>138,139</sup>. In the absence of TIE2, ANG2 interacts with  $\alpha 5\beta 1$  integrin, triggering integrin receptor activation and translocation to fibrillar adhesions, which results in compromised vascular integrity<sup>140</sup>. In addition, endothelial  $\alpha 5$  integrin contributes to extravasation by directly interacting with neuropilin 2 (NRP2), a multifunctional non-kinase receptor for multiple growth factors expressed on cancer cells<sup>141</sup>. The NRP2– $\alpha 5$  integrin *trans*-interaction facilitates cancer cell binding to the endothelium and mediates vascular extravasation in zebrafish and mouse xenograft models of clear cell renal cell carcinoma and pancreatic adenocarcinoma<sup>141</sup>. Thus, endothelial  $\alpha 5$  integrin expression is likely to be associated with the strong clinical correlation between elevated NRP2 levels and metastasis in osteosarcoma and breast cancer<sup>142,143</sup>.

The requirement for integrins in extravasation and metastasis is likely to be dependent on the cancer cell type and tissue-specific features. For instance, the presence of integrin-dependent myosin X-induced filopodia in breast cancer cells correlates with the degree of extravasation in the lung<sup>113</sup>. In another example of direct integrin-mediated regulation of cancer cell–endothelium interactions at the step of extravasation, pre-existing patches of exposed basement membrane in the pulmonary vasculature regulate CTC arrest<sup>144</sup> as laminin, a basement membrane component, is engaged by  $\alpha 3\beta 1$  integrin on the tumour cell<sup>144</sup>. In addition, the blood clotting cascade is selectively involved in lung metastasis and associated with integrin activation<sup>27,28</sup>. Here, aggregates of platelets, fibrin and carcinoma cells support local recruitment of plasma fibronectin. The ensuing fibrin–fibronectin complexes induce  $\alpha v\beta 3$  integrin activation, triggering invasive protrusions and pro-invasive EMT signalling in the cancer cells<sup>27,28</sup>.

Within the fenestrated endothelium of bone marrow and liver, which are regions that are more permissive to CTC entry, direct integrin-mediated interactions or active transendothelial migration may be less prominent approaches for extravasation. However, recent data from primary tumour-bearing mice and tissue from human colon cancer metastases show that the luminal side of liver blood vessels is enriched in fibronectin deposits<sup>145</sup>. CTCs adhere to these endothelial fibronectin patches, and this tethering requires talin 1 (ref.<sup>145</sup>) and presumably integrins, although this remains to be formally investigated. In the brain, CTCs need to cross the blood–brain barrier, the integrity of which may be compromised in patients with cancer<sup>146</sup>. Currently, there is no clear understanding of how, or whether, integrins contribute to cancer cell extravasation to the brain owing to the challenge of directly assessing the blood–brain barrier. However, at least in model systems, certain integrin profiles have been shown to influence tropism of breast cancer cell metastases to the brain<sup>147</sup>.

Inhibition of  $\beta 1$  integrin significantly reduces the formation of metastatic foci of several cancer types, including breast cancer<sup>148</sup> and PDAC<sup>149</sup>. However, the specific metastatic steps regulated by  $\beta 1$  integrin remain unclear and are likely to be context dependent. Human MDA-MB-231 breast cancer cells injected into the vasculature of zebrafish embryos were found to adhere to the intraluminal vessel wall via  $\beta 1$  integrins, migrate along the vessel and undergo  $\beta 1$  integrin-dependent transendothelial migration by inducing remodelling of the vascular endothelium, including cell–cell junctions<sup>150</sup>. Furthermore, transcriptional upregulation of  $\beta 1$  integrin expression by CDC42 and serum response factor (SRF) has been linked to cancer cell interaction with endothelial cells and transendothelial migration<sup>151</sup>. A more detailed insight into the role of tumour  $\beta 1$  integrin in extravasation was obtained using an in vitro model of microvasculature<sup>152</sup>.  $\beta 1$  integrin-mediated adhesion and activation were essential to stabilize the initial contacts made by the tip of the leading protrusion of the cancer cell with the subendothelial matrix. In addition,  $\beta 1$  integrin was necessary for the cancer cells to invade through the basement membrane after clearing the endothelial barrier<sup>152</sup>. These findings, which are supportive of integrin activation playing a key role in extravasation, are in line with the finding that expression of activated mutants of  $\beta 1$  integrin in cancer cells intravenously injected into chick embryos and mice increases metastatic colonization of the liver<sup>153</sup>.

Regulators of integrin activity have also been implicated in metastasis. Gene expression profiling of CTCs derived from patients with metastatic colorectal cancer has revealed high expression of known integrin binding partners such as talin 1, vinculin and kindlin 3 (also known as FERMT3)<sup>154</sup>. Specifically, talin 1 functionally contributes to the extravasation and metastasis of colon cancer CTCs<sup>145</sup>, while talin 1 overexpression has been shown to correlate with aggressiveness in oral SCC and contribute to anoikis suppression during prostate cancer metastasis<sup>155,156</sup>. Kindlin 1 (also known as FERMT1) is elevated in cancer types with a propensity to metastasize to the lungs, such as breast cancer; this finding has led to the suggestion that kindlin 1 is a prognostic factor for lung metastasis<sup>157,158</sup>. Short hairpin RNA (shRNA)-mediated knockdown of kindlin 1 in breast cancer cells has been shown to suppress primary tumour growth and lung metastasis *in vivo*<sup>157</sup>, while genetic deletion of kindlin 1 in mice impaired  $\alpha 4$  integrin-mediated pulmonary arrest of disseminating mammary tumour cells<sup>158</sup>. Therefore, mounting evidence suggests that increased integrin activity in cancer cells or endothelial cells is coupled to extravasation.

### Integrins in dormancy

Successfully extravasated cancer cells may lack the necessary growth-promoting signals in their new tissue environment and thus enter a dormant state. Links between integrins and the ECM play an important role in regulating cancer cell dormancy. Fibronectin secretion, activation of cytoskeletal contractility downstream of  $\beta 1$  integrins<sup>159</sup> and activation of FAK in response to integrin-mediated adhesion<sup>160</sup> have all been associated with integrin-induced exit of cancer cells from dormancy. During lung metastasis, the proliferation of cancer cells was induced by the formation of  $\beta 1$  integrin-containing, actin-rich, filopodia-like protrusions. These protrusions were generated by the cooperative action of two formin family members, namely, RAP1-interacting factor (RIF) and MDIA2 (also known as DIAPH3)<sup>161</sup>, which induce actin nucleation and subsequent elongation of actin filaments<sup>162</sup> and were critical for the activation of FAK to overcome dormancy<sup>163</sup>. In addition, integrin downstream signalling functioned as a positive feedback mechanism to sustain signalling pathways involving integrin-linked kinase (ILK) and  $\beta$ -parvin, two integrin-actin-bridging proteins, prolonging the lifetime of the filopodia<sup>161</sup>.

### Integrins in anticancer therapy

In addition to being implicated in nearly every step of the metastatic cascade, integrin-mediated pathways are often connected to the development of drug resistance<sup>10,132,164,165,166</sup>. In mouse mammary tumour models, increased collagen levels and increased  $\beta 1$  integrin and SRC activity have been demonstrated to accompany, and promote, combined resistance to anti-human epidermal growth factor receptor 2 (HER2: also known as ERBB2) (trastuzumab and pertuzumab) and anti-PI3K (buparlisib) therapies<sup>164</sup>. In lung cancer,  $\beta 1$  integrin-SRC-AKT signalling has been proposed as a key mediator of acquired resistance to EGFR-targeted anticancer drugs<sup>167</sup>, while a  $\beta 1$  integrin-FAK-cortactin signalling nexus has been described as a mechanism reducing head and neck SCC sensitivity to radiotherapy<sup>168</sup>.  $\alpha v\beta 3$  integrin is a putative marker of breast, lung and pancreatic carcinomas with stem-like properties and high resistance to RTK inhibitors<sup>9,132</sup>. Recently, paradoxical activation of melanoma-associated fibroblasts by a BRAF inhibitor

(PLX4720), which leads to stromal matrix stiffening and elevated  $\beta 1$  integrin–SRC–FAK signalling in melanoma cells, was demonstrated to promote PLX4720 resistance<sup>169</sup>.

As such, integrins are considered to be attractive drug targets, a concept that is bolstered by the accessibility of their crucial cell surface-exposed ligand binding and regulatory sites to therapeutic intervention; however, despite largely encouraging preclinical studies, ensuing successful clinical trials based on current methodologies are, regrettably, few in number. For example, several in vitro and preclinical studies have indicated that integrin inhibition would be efficient at sensitizing breast cancer<sup>170,171</sup> and glioblastoma to radiotherapy<sup>172,173</sup>. However, cilengitide, a selective  $\alpha v\beta 3$  integrin and  $\alpha v\beta 5$  integrin inhibitor, in combination with standard of care (radiotherapy with the chemotherapy temozolomide), failed to improve survival of patients with glioblastoma in an open-label phase III trial, the CENTRIC EORTC 26071–22072 study, and in a companion phase II trial, the CORE study, and therefore, further development of this drug was discontinued for treatment of glioblastoma<sup>174,175,176</sup>. The recent POSEIDON trial, combining abituzumab, a humanized  $\alpha v$  integrin-specific antibody, with the standard of care, showed no improvement in progression-free survival of patients with wild-type-KRAS metastatic colorectal cancer compared with the standard of care alone<sup>177</sup>; however, the data did suggest some improvement in patients with high  $\alpha v\beta 6$  integrin expression<sup>177</sup>, a preliminary observation that needs to be verified in trials in which  $\alpha v\beta 6$  integrin expression is used to stratify the patient cohort.

Notably, most current therapeutic strategies, including cilengitide and abituzumab, have been primarily designed to interfere with integrin–ligand interactions. Considering the breadth of new evidence describing ECM ligand-independent integrin signalling in cancer cell survival and drug resistance<sup>44,51,129,132</sup>, there may be a need to develop alternative strategies that exploit tumour-specific integrin expression profiles (Box 2) or downstream integrin effectors rather than focusing directly on targeting the integrin receptors themselves. Moreover, switching between integrin heterodimers in cancer<sup>12,14</sup> may be one mechanism whereby tumour cells evade therapy<sup>12</sup> and may explain the lack of efficacy of specific integrin heterodimer inhibitors.

FAK is a typical example of a protein that is highly phosphorylated in response to integrin activation and has diverse cellular functions (for example, cell proliferation, adhesion and migration) that impinge on tumour cell behaviour<sup>178,179,180</sup>. FAK has been identified as a key player in the resistance to anoikis<sup>45,178,179,180</sup> and in maintaining an immunosuppressive TME<sup>181,182</sup>. Currently, FAK inhibitors in combination therapy are under phase I/II safety and pharmacokinetics evaluation for treatment of advanced solid cancers (NCT02428270, a phase II trial using a FAK inhibitor in combination with a MEK1 and MEK2 inhibitor<sup>183</sup> and NCT02546531, a phase I trial using a FAK inhibitor in combination with a humanized antibody targeting programmed cell death protein 1 (PD1) and chemotherapy<sup>184</sup>); however, whether these have true potential as single or combinatorial therapies remains to be seen. The interpretation of results from these clinical trials is likely to be complicated, in particular, by new insights into cancer-specific roles of FAK distinct from those associated with its classical subcellular localization at the plasma membrane. In SCC, FAK activity in the nucleus has been linked to transcriptional regulation of chemokine and cytokine networks to promote tumour evasion from immune cells<sup>182</sup> and to cell cycle progression to



support tumour growth<sup>185</sup>. It is currently unclear whether integrin signalling plays a role in nuclear FAK activity, how FAK is translocated to the nucleus and whether FAK-dependent transcription of immunomodulatory genes also occurs in other cancer types. This latter point is particularly interesting, as in pancreatic cancer, FAK inhibition has been shown to increase immune cell infiltration into the TME and to sensitize tumours to immune checkpoint therapy<sup>181</sup>.

An emerging theme in integrin research is the ability of these receptors to modulate the tumour-associated stroma into an environment tolerating tumour growth and progression. This has potential therapeutic implications. For example, LOX-mediated matrix crosslinking, which is associated with matrix stiffening and tumour progression in several cancers<sup>186,187,188,189</sup>, increases integrin-dependent signalling in pancreatic cancer<sup>190</sup> and drives SRC-dependent cell proliferation and metastasis in colorectal cancer<sup>191</sup>. Recently, inhibition of LOX was shown to dampen metastasis and to increase response to chemotherapy in a PDAC mouse model<sup>187</sup>. In this study, it was suggested that blocking integrin interaction with fibronectin (using an  $\alpha 5$  integrin-blocking antibody) strengthens the negative effect of LOX inhibition on cell viability; however, this preliminary observation requires in-depth validation. It may also be interesting to dissect the potential relationship between integrins and LOX expression<sup>73,75</sup> to further understand the mechanisms of action of LOX inhibitors.

Another therapeutically intriguing finding is the somewhat counterintuitive role of a bulky glycocalyx in inducing integrin signalling and cell survival in cancer. Mucins, such as mucin 1 (MUC1) and MUC16, are bulky cell surface glycoproteins frequently upregulated in epithelial cancers<sup>192</sup>. They extend far from the plasma membrane and sterically hinder integrin-ECM links. However, in parallel, they promote increased integrin clustering, downstream signalling and crosstalk with GFRs in areas in the cell membrane where ECM linkages are formed<sup>193</sup>. Importantly, MUC1 overexpression supports tumour growth and metastasis of melanoma xenografts in mice, and cells engineered to have a thick glycocalyx foster increased metastatic potential, most likely owing to increased integrin signalling<sup>194</sup>. Given the established role of mucins in tumour progression<sup>192</sup>, several strategies to target them therapeutically have been developed. Small molecule drugs that inhibit MUC1 cytoplasmic tail oligomerization (for example, GO-201) have shown promising results in human breast tumour and MUC1-expressing prostate cancer xenografts in mice<sup>195,196</sup> and were found to be well tolerated in a phase I trial in patients with advanced solid tumours (NCT01279603 (ref.<sup>197</sup>)). In addition, drugs inhibiting the core mucin-synthesizing enzyme GCNT3, which lead to disrupted mucin production in vivo and in vitro<sup>198</sup>, have been described and may inhibit tumour growth either independently or in synergy with other drugs<sup>192</sup>.

In addition to being considered prominent drug targets, several integrins (for example,  $\alpha v\beta 3$  integrin,  $\alpha v\beta 6$  integrin and  $\alpha 5\beta 1$  integrin) are emerging as valuable probes in cancer imaging studies to determine both prognosis and treatment efficacy<sup>199,200,201</sup>. Clinical trials using positron emission tomography (PET) imaging of integrin-binding tracers include an RGD peptide-containing  $\alpha v\beta 3$  integrin tracer to evaluate tumour burden and angiogenesis

(NCT00565721 (ref.<sup>202</sup>)) and an  $\alpha v\beta 6$  integrin tracer to detect tumours and evaluate treatment response in patients with pancreatic cancer (NCT02683824 (ref.<sup>203</sup>)).

## Conclusions

Decades of research into the biological functions of integrins in cancer have demonstrated a strikingly complex set of molecular mechanisms employed by these adhesion receptors in different steps of cancer progression. The importance of integrins as cellular mechanotransducers is becoming increasingly recognized, and integrins are understood to play critical roles in tumour progression, in which altered integrin function or expression contributes to both cancer cell behaviour and the biophysical and biochemical features of the TME. Integrins are also expressed by stromal cells and on tumour-derived exosomes, and in this way, they help to define the ECM deposited around primary tumours and in metastatic niches and further contribute to disease progression. Thus, targeting integrins in the tumour stroma may be an important avenue to explore when considering future therapeutic options. Integrins are also key players in metastasis owing to diverse roles in cell motility, the ability to facilitate intravasation and extravasation via multiple mechanisms and regulation of cancer cell survival in the circulation. Whole genome sequencing of clinical samples from an autopsy study of patients with metastatic prostate cancer has demonstrated that metastases seed further metastases and give rise to diverse therapy-resistant subclones<sup>204</sup>. Thus, inhibiting integrin-mediated seeding of cancer at any stage of the disease is likely to be beneficial for the patient.

## Supplementary Material

Refer to Web version on PubMed Central for supplementary material.

## Acknowledgements

The authors apologize to all colleagues whose work was not mentioned here owing to space limitations. The authors thank the Ivaska laboratory members for their constructive criticisms of this review and J. Marshall for insightful discussion and contributions to Supplementary Table 1. Work in the authors' laboratory was supported by funding from the Academy of Finland, a European Research Council (ERC) Consolidator Grant, the Sigrid Juselius Foundation and the Cancer Society of Finland.

## References

1. Humphries JD, Byron A, Humphries MJ. Integrin ligands at a glance. *J Cell Sci.* 2006; 119:3901–3903. [PubMed: 16988024]
2. Arruda Macêdo JK, Fox JW, de Souza Castro M. Disintegrins from snake venoms and their applications in cancer research and therapy. *Curr Protein Pept Sci.* 2015; 16:532–548. [PubMed: 26031306]
3. Hussein HAM, et al. Beyond RGD: virus interactions with integrins. *Arch Virol.* 2015; 160:2669–2681. [PubMed: 26321473]
4. De Franceschi N, Hamidi H, Alanko J, Sahgal P, Ivaska J. Integrin traffic - the update. *J Cell Sci.* 2015; 128:839–852. [PubMed: 25663697]
5. Horton ER, et al. Definition of a consensus integrin adhesome and its dynamics during adhesion complex assembly and disassembly. *Nat Cell Biol.* 2015; 17:1577–1587. [PubMed: 26479319]
6. Horton ER, et al. The integrin adhesome network at a glance. *J Cell Sci.* 2016; 129:4159–4163. [PubMed: 27799358]

7. Zaidel-Bar R, Itzkovitz S, Ma'ayan A, Iyengar R, Geiger B. Functional atlas of the integrin adhesome. *Nat Cell Biol.* 2007; 9:858–867. [PubMed: 17671451]
8. Winograd-Katz SE, Fässler R, Geiger B, Legate KR. The integrin adhesome: from genes and proteins to human disease. *Nat Rev Mol Cell Biol.* 2014; 15:273–288. [PubMed: 24651544]
9. Seguin L, Desgrosellier JS, Weis SM, Cheresh DA. Integrins and cancer: regulators of cancer stemness, metastasis, and drug resistance. *Trends in cell biology.* 2015; 25:234–240. [PubMed: 25572304]
10. Hamidi H, Pietilä M, Ivaska J. The complexity of integrins in cancer and new scopes for therapeutic targeting. *Br J Cancer.* 2016; 115:1017–1023. [PubMed: 27685444]
11. Raab-Westphal S, Marshall JF, Goodman SL. Integrins as Therapeutic Targets: Successes and Cancers. *Cancers (Basel).* 2017; 9
12. Parvani JG, Galliher-Beckley AJ, Schiemann BJ, Schiemann WP. Targeted inactivation of  $\beta 1$  integrin induces  $\beta 3$  integrin switching, which drives breast cancer metastasis by TGF- $\beta$ . *Mol Biol Cell.* 2013; 24:3449–3459. [PubMed: 24006485]
13. van der Flier A, et al. Endothelial  $\alpha 5$  and  $\alpha v \beta 3$  integrins cooperate in remodeling of the vasculature during development. *Development.* 2010; 137:2439–2449. [PubMed: 20570943]
14. White DP, Caswell PT, Norman JC.  $\alpha v \beta 3$  and  $\alpha 5 \beta 1$  integrin recycling pathways dictate downstream Rho kinase signaling to regulate persistent cell migration. *J Cell Biol.* 2007; 177:515–525. [PubMed: 17485491]
15. Paul NR, Jacquemet G, Caswell PT. Endocytic Trafficking of Integrins in Cell Migration. *Curr Biol.* 2015; 25:1092.
16. Bouvard D, Pouwels J, De Franceschi N, Ivaska J. Integrin inactivators: balancing cellular functions in vitro and in vivo. *Nat Rev Mol Cell Biol.* 2013; 14:430–442. [PubMed: 23719537]
17. Sheldrake HM, Patterson LH. Strategies to inhibit tumor associated integrin receptors: rationale for dual and multi-antagonists. *J Med Chem.* 2014; 57:6301–6315. [PubMed: 24568695]
18. Munshi HG, Stack MS. Reciprocal interactions between adhesion receptor signaling and MMP regulation. *Cancer Metastasis Rev.* 2006; 25:45–56. [PubMed: 16680571]
19. Gaggioli C, et al. Fibroblast-led collective invasion of carcinoma cells with differing roles for RhoGTPases in leading and following cells. *Nat Cell Biol.* 2007; 9:1392–1400. [PubMed: 18037882]
20. Attieh Y, Vignjevic DM. The hallmarks of CAFs in cancer invasion. *Eur J Cell Biol.* 2016; 95:493–502. [PubMed: 27575401]
21. Attieh Y, et al. Cancer-associated fibroblasts lead tumor invasion through integrin- $\beta 3$ -dependent fibronectin assembly. *J Cell Biol.* 2017 [This article demonstrates that cancer cell invasion requires not only CAF-mediated contractility of the matrix but also CAF-dependent remodelling of fibronectin by integrin  $\alpha v \beta 3$ .]
22. Erdogan B, et al. Cancer-associated fibroblasts promote directional cancer cell migration by aligning fibronectin. *J Cell Biol.* 2017 [This study describes a mechanism whereby CAFs align fibronectin fibres within the tumour ECM and, through application of traction forces mediated by integrin  $\alpha 5 \beta 1$ , promote directional cancer cell migration.]
23. Labernadie A, et al. A mechanically active heterotypic E-cadherin/N-cadherin adhesion enables fibroblasts to drive cancer cell invasion. *Nat Cell Biol.* 2017; 19:224–237. [PubMed: 28218910]
24. Lambert AW, Pattabiraman DR, Weinberg RA. Emerging Biological Principles of Metastasis. *Cell.* 2017; 168:670–691. [PubMed: 28187288]
25. Frisch SM, Vuori K, Ruoslahti E, Chan-Hui PY. Control of adhesion-dependent cell survival by focal adhesion kinase. *J Cell Biol.* 1996; 134:793–799. [PubMed: 8707856]
26. Strlic B, Offermanns S. Intravascular Survival and Extravasation of Tumor Cells. *Cancer Cell.* 2017; 32:282–293. [PubMed: 28898694]
27. Knowles LM, et al. Integrin  $\alpha v \beta 3$  and fibronectin upregulate Slug in cancer cells to promote clot invasion and metastasis. *Cancer Res.* 2013; 73:6175–6184. [PubMed: 23966293] [The authors in this study connect increased fibronectin and active integrin  $\alpha v \beta 3$  expression to upregulation of SLUG, EMT and fibrin invasion as a mechanism selectively involved in lung metastasis. ]
28. Malik G, et al. Plasma fibronectin promotes lung metastasis by contributions to fibrin clots and tumor cell invasion. *Cancer Res.* 2010; 70:4327–4334. [PubMed: 20501851]

29. Cagnet S, et al. Signaling events mediated by  $\alpha 3\beta 1$  integrin are essential for mammary tumorigenesis. *Oncogene*. 2014; 33:4286–4295. [PubMed: 24077284]
30. White DE, et al. Targeted disruption of beta1-integrin in a transgenic mouse model of human breast cancer reveals an essential role in mammary tumor induction. *Cancer Cell*. 2004; 6:159–170. [PubMed: 15324699]
31. Ramirez NE, et al. The  $\alpha 2\beta 1$  integrin is a metastasis suppressor in mouse models and human cancer. *J Clin Invest*. 2011; 121:226–237. [PubMed: 21135504]
32. Ramovs V, Te Molder L, Sonnenberg A. The opposing roles of laminin-binding integrins in cancer. *Matrix Biol*. 2017; 57–58:213–243.
33. Ludlow A, et al. Characterization of integrin beta6 and thrombospondin-1 double-null mice. *J Cell Mol Med*. 2005; 9:421–437. [PubMed: 15963261]
34. Moore KM, et al. Therapeutic targeting of integrin  $\alpha v\beta 6$  in breast cancer. *J Natl Cancer Inst*. 2014; 106
35. Truong HH, et al.  $\beta 1$  integrin inhibition elicits a prometastatic switch through the TGF $\beta$ -miR-200-ZEB network in E-cadherin-positive triple-negative breast cancer. *Sci Signal*. 2014; 7:ra15. [PubMed: 24518294]
36. Ahmed N, et al. Overexpression of alpha(v)beta6 integrin in serous epithelial ovarian cancer regulates extracellular matrix degradation via the plasminogen activation cascade. *Carcinogenesis*. 2002; 23:237–244. [PubMed: 11872628]
37. Baum O, et al. Increased invasive potential and up-regulation of MMP-2 in MDA-MB-231 breast cancer cells expressing the beta3 integrin subunit. *Int J Oncol*. 2007; 30:325–332. [PubMed: 17203213]
38. Gu X, Niu J, Dorahy DJ, Scott R, Agrez MV. Integrin alpha(v)beta6-associated ERK2 mediates MMP-9 secretion in colon cancer cells. *Br J Cancer*. 2002; 87:348–351. [PubMed: 12177807]
39. Kesanakurti D, Chetty C, Dinh DH, Gujrati M, Rao JS. Role of MMP-2 in the regulation of IL-6/Stat3 survival signaling via interaction with  $\alpha 5\beta 1$  integrin in glioma. *Oncogene*. 2013; 32:327–340. [PubMed: 22349830]
40. Yue J, Zhang K, Chen J. Role of integrins in regulating proteases to mediate extracellular matrix remodeling. *Cancer Microenviron*. 2012; 5:275–283. [PubMed: 22437309]
41. Roman J, Ritzenthaler JD, Roser-Page S, Sun X, Han S. alpha5beta1-integrin expression is essential for tumor progression in experimental lung cancer. *Am J Respir Cell Mol Biol*. 2010; 43:684–691. [PubMed: 20081050]
42. Tuomi S, et al. PKCepsilon regulation of an alpha5 integrin-ZO-1 complex controls lamellae formation in migrating cancer cells. *Sci Signal*. 2009; 2:ra32. [PubMed: 19567915]
43. González-Tarragó V, et al. Binding of ZO-1 to  $\alpha 5\beta 1$  integrins regulates the mechanical properties of  $\alpha 5\beta 1$ -fibronectin links. *Mol Biol Cell*. 2017; 28:1847–1852. [PubMed: 28251923]
44. Barrow-McGee R, et al. Beta 1-integrin-c-Met cooperation reveals an inside-in survival signalling on autophagy-related endomembranes. *Nat Commun*. 2016; 7
45. Alanko J, et al. Integrin endosomal signalling suppresses anoikis. *Nat Cell Biol*. 2015; 17:1412–1421. [PubMed: 26436690]
46. Guo W, et al. Beta 4 integrin amplifies ErbB2 signaling to promote mammary tumorigenesis. *Cell*. 2006; 126:489–502. [PubMed: 16901783]
47. Mai A, et al. Distinct c-Met activation mechanisms induce cell rounding or invasion through pathways involving integrins, RhoA and HIP1. *J Cell Sci*. 2014; 127:1938–1952. [PubMed: 24790222]
48. Novitskaya V, et al. Integrin  $\alpha 3\beta 1$ -CD151 complex regulates dimerization of ErbB2 via RhoA. *Oncogene*. 2014; 33:2779–2789. [PubMed: 23792450]
49. Trusolino L, Bertotti A, Comoglio PM. A signaling adapter function for alpha6beta4 integrin in the control of HGF-dependent invasive growth. *Cell*. 2001; 107:643–654. [PubMed: 11733063]
50. Desgrosellier JS, et al. Integrin  $\alpha v\beta 3$  drives slug activation and stemness in the pregnant and neoplastic mammary gland. *Dev Cell*. 2014; 30:295–308. [PubMed: 25117682]
51. Desgrosellier JS, et al. An integrin alpha(v)beta(3)-c-Src oncogenic unit promotes anchorage-independence and tumor progression. *Nat Med*. 2009; 15:1163–1169. [PubMed: 19734908]

52. Sun Q, et al. Proapoptotic PUMA targets stem-like breast cancer cells to suppress metastasis. *J Clin Invest.* 2018; 128:531–544. [PubMed: 29227280]
53. Mitra AK, et al. Ligand-independent activation of c-Met by fibronectin and  $\alpha(5)\beta(1)$ -integrin regulates ovarian cancer invasion and metastasis. *Oncogene.* 2011; 30:1566–1576. [PubMed: 21119598]
54. Mayorca-Guiliani AE, et al. ISDoT: in situ decellularization of tissues for high-resolution imaging and proteomic analysis of native extracellular matrix. *Nat Med.* 2017; 23:890–898. [PubMed: 28604702] [>This article describes a whole-organ decellularisation technique to study native ECM architecture and components and to monitor cancer-cell-induced changes in ECM during disease progression.]
55. Naba A, et al. Characterization of the Extracellular Matrix of Normal and Diseased Tissues Using Proteomics. *J Proteome Res.* 2017; 16:3083–3091. [PubMed: 28675934]
56. Handorf AM, Zhou Y, Halanski MA, Li W. Tissue Stiffness Dictates Development, Homeostasis, and Disease Progression. *Organogenesis.* 2015; 11:1–15. [PubMed: 25915734]
57. Matsui H, Harada I, Sawada Y. Src, p130Cas, and Mechanotransduction in Cancer Cells. *Genes Cancer.* 2012; 3:394–401. [PubMed: 23226577]
58. Sun Z, Guo SS, Fässler R. Integrin-mediated mechanotransduction. *J Cell Biol.* 2016; 215:445–456. [PubMed: 27872252]
59. Kaushik S, Pickup MW, Weaver VM. From transformation to metastasis: deconstructing the extracellular matrix in breast cancer. *Cancer Metastasis Rev.* 2016; 35:655–667. [PubMed: 27914000]
60. Acerbi I, et al. Human breast cancer invasion and aggression correlates with ECM stiffening and immune cell infiltration. *Integr Biol (Camb).* 2015; 7:1120–1134. [PubMed: 25959051]
61. Paszek MJ, et al. Tensional homeostasis and the malignant phenotype. *Cancer Cell.* 2005; 8:241–254. [PubMed: 16169468]
62. Rubashkin MG, et al. Force engages vinculin and promotes tumor progression by enhancing PI3K activation of phosphatidylinositol (3,4,5)-triphosphate. *Cancer Res.* 2014; 74:4597–4611. [PubMed: 25183785]
63. Aragona M, et al. A mechanical checkpoint controls multicellular growth through YAP/TAZ regulation by actin-processing factors. *Cell.* 2013; 154:1047–1059. [PubMed: 23954413]
64. Dupont S, et al. Role of YAP/TAZ in mechanotransduction. *Nature.* 2011; 474:179–183. [PubMed: 21654799]
65. Kaukonen R, et al. Normal stroma suppresses cancer cell proliferation via mechanosensitive regulation of JMJD1a-mediated transcription. *Nat Commun.* 2016; 7
66. Elosegui-Artola A, et al. Mechanical regulation of a molecular clutch defines force transmission and transduction in response to matrix rigidity. *Nat Cell Biol.* 2016; 18:540–548. [PubMed: 27065098]
67. Das A, Fischer RS, Pan D, Waterman CM. YAP Nuclear Localization in the Absence of Cell-Cell Contact Is Mediated by a Filamentous Actin-dependent, Myosin II- and Phospho-YAP-independent Pathway during Extracellular Matrix Mechanosensing. *J Biol Chem.* 2016; 291:6096–6110. [PubMed: 26757814]
68. Kim N, Gumbiner BM. Adhesion to fibronectin regulates Hippo signaling via the FAK-Src-PI3K pathway. *J Cell Biol.* 2015; 210:503–515. [PubMed: 26216901]
69. Foster CT, Gualdrini F, Treisman R. Mutual dependence of the MRTF-SRF and YAP-TEAD pathways in cancer-associated fibroblasts is indirect and mediated by cytoskeletal dynamics. *Genes Dev.* 2017; 31:2361–2375. [PubMed: 29317486]
70. Si Y, et al. Src Inhibits the Hippo Tumor Suppressor Pathway through Tyrosine Phosphorylation of Lats1. *Cancer Res.* 2017; 77:4868–4880. [PubMed: 28754671]
71. Nardone G, et al. YAP regulates cell mechanics by controlling focal adhesion assembly. *Nat Commun.* 2017; 8
72. Cox TR, et al. LOX-mediated collagen crosslinking is responsible for fibrosis-enhanced metastasis. *Cancer Res.* 2013; 73:1721–1732. [PubMed: 23345161]
73. Khan Z, Marshall JF. The role of integrins in TGF $\beta$  activation in the tumour stroma. *Cell Tissue Res.* 2016; 365:657–673. [PubMed: 27515461]

74. Voloshenyuk TG, Landesman ES, Khoutorova E, Hart AD, Gardner JD. Induction of cardiac fibroblast lysyl oxidase by TGF- $\beta$ 1 requires PI3K/Akt, Smad3, and MAPK signaling. *Cytokine*. 2011; 55:90–97. [PubMed: 21498085]
75. Gao AE, Sullivan KE, Black LD. Lysyl oxidase expression in cardiac fibroblasts is regulated by  $\alpha$ 2 $\beta$ 1 integrin interactions with the cellular microenvironment. *Biochem Biophys Res Commun*. 2016; 475:70–75. [PubMed: 27169768]
76. Franco-Barraza J, et al. Matrix-regulated integrin  $\alpha$ v $\beta$ 5 maintains  $\alpha$ 5 $\beta$ 1-dependent desmoplastic traits prognostic of neoplastic recurrence. *Elife*. 2017; 6 [This study compares normal fibroblasts and cancer-associated fibroblasts from patients with pancreatic cancer to reveal alterations in the subcellular localisation of  $\alpha$ 5 $\beta$ 1 integrin as a potential prognostic marker for disease recurrence.]
77. Maritzen T, Schachtner H, Legler DF. On the move: endocytic trafficking in cell migration. *Cell Mol Life Sci*. 2015; 72:2119–2134. [PubMed: 25681867]
78. Waclaw B, et al. A spatial model predicts that dispersal and cell turnover limit intratumour heterogeneity. *Nature*. 2015; 525:261–264. [PubMed: 26308893] [This study presents a model that provides insights into tumour growth and evolution based on short-range cell movement and cell turnover within the tumour.]
79. Chan CE, Odde DJ. Traction dynamics of filopodia on compliant substrates. *Science*. 2008; 322:1687–1691. [PubMed: 19074349]
80. Gardel ML, et al. Traction stress in focal adhesions correlates biphasically with actin retrograde flow speed. *J Cell Biol*. 2008; 183:999–1005. [PubMed: 19075110]
81. Mitchison T, Kirschner M. Cytoskeletal dynamics and nerve growth. *Neuron*. 1988; 1:761–772. [PubMed: 3078414]
82. Provenzano PP, et al. Collagen reorganization at the tumor-stromal interface facilitates local invasion. *BMC Med*. 2006; 4:38. [PubMed: 17190588]
83. Barcus CE, et al. Elevated collagen-I augments tumor progressive signals, intravasation and metastasis of prolactin-induced estrogen receptor alpha positive mammary tumor cells. *Breast Cancer Res*. 2017; 19:9. [PubMed: 28103936]
84. Drifka CR, et al. Human pancreatic stellate cells modulate 3D collagen alignment to promote the migration of pancreatic ductal adenocarcinoma cells. *Biomed Microdevices*. 2016; 18:105. [PubMed: 27819128]
85. Drifka CR, et al. Highly aligned stromal collagen is a negative prognostic factor following pancreatic ductal adenocarcinoma resection. *Oncotarget*. 2016; 7:76197–76213. [PubMed: 27776346]
86. Laklai H, et al. Genotype tunes pancreatic ductal adenocarcinoma tissue tension to induce matricellular fibrosis and tumor progression. *Nat Med*. 2016; 22:497–505. [PubMed: 27089513]
87. Hanley CJ, et al. A subset of myofibroblastic cancer-associated fibroblasts regulate collagen fiber elongation, which is prognostic in multiple cancers. *Oncotarget*. 2016; 7:6159–6174. [PubMed: 26716418]
88. Pointer KB, et al. Association of collagen architecture with glioblastoma patient survival. *J Neurosurg*. 2017; 126:1812–1821. [PubMed: 27588592]
89. Gupton SL, et al. Mena binds  $\alpha$ 5 integrin directly and modulates  $\alpha$ 5 $\beta$ 1 function. *J Cell Biol*. 2012; 198:657–676. [PubMed: 22908313]
90. Oudin MJ, et al. Tumor Cell-Driven Extracellular Matrix Remodeling Drives Haptotaxis during Metastatic Progression. *Cancer Discov*. 2016; 6:516–531. [PubMed: 26811325] [This study describes how a direct interaction between a prometastatic actin-regulatory protein MENA(INV) and integrin  $\alpha$ 5 $\beta$ 1 increases tumour cell haptotaxis and contributes to the formation of perpendicular collagen capsules at the tumour edge.]
91. Georgiadou M, Ivaska J. Tensins: Bridging AMP-Activated Protein Kinase with Integrin Activation. *Trends Cell Biol*. 2017; 27:703–711. [PubMed: 28698049]
92. Georgiadou M, et al. AMPK negatively regulates tensin-dependent integrin activity. *J Cell Biol*. 2017; 216:1107–1121. [PubMed: 28289092]
93. Duan W, et al. Desmoplasia suppression by metformin-mediated AMPK activation inhibits pancreatic cancer progression. *Cancer Lett*. 2017; 385:225–233. [PubMed: 27773749]



94. Te Boekhorst V, Preziosi L, Friedl P. Plasticity of Cell Migration In Vivo and In Silico. *Annu Rev Cell Dev Biol.* 2016; 32:491–526. [PubMed: 27576118]
95. Te Boekhorst V, Friedl P. Plasticity of Cancer Cell Invasion-Mechanisms and Implications for Therapy. *Adv Cancer Res.* 2016; 132:209–264. [PubMed: 27613134]
96. Yilmaz M, Christofori G. EMT, the cytoskeleton, and cancer cell invasion. *Cancer Metastasis Rev.* 2009; 28:15–33. [PubMed: 19169796]
97. Macpherson IR, et al. p120-catenin is required for the collective invasion of squamous cell carcinoma cells via a phosphorylation-independent mechanism. *Oncogene.* 2007; 26:5214–5228. [PubMed: 17334396]
98. Canel M, et al. Quantitative in vivo imaging of the effects of inhibiting integrin signaling via Src and FAK on cancer cell movement: effects on E-cadherin dynamics. *Cancer Res.* 2010; 70:9413–9422. [PubMed: 21045155] [This study points to a novel role for integrin signalling in regulating E-cadherin internalization and therefore cell-cell adhesion strength and collective cancer cell movement.]
99. Canel M, Serrels A, Frame MC, Brunton VG. E-cadherin-integrin crosstalk in cancer invasion and metastasis. *J Cell Sci.* 2013; 126:393–401. [PubMed: 23525005]
100. Borghi N, Lowndes M, Maruthamuthu V, Gardel ML, Nelson WJ. Regulation of cell motile behavior by crosstalk between cadherin- and integrin-mediated adhesions. *Proc Natl Acad Sci U S A.* 2010; 107:13324–13329. [PubMed: 20566866]
101. Gimond C, et al. Induction of cell scattering by expression of beta1 integrins in beta1-deficient epithelial cells requires activation of members of the rho family of GTPases and downregulation of cadherin and catenin function. *J Cell Biol.* 1999; 147:1325–1340. [PubMed: 10601344]
102. Martinez-Rico C, Pincet F, Thiery J, Dufour S. Integrins stimulate E-cadherin-mediated intercellular adhesion by regulating Src-kinase activation and actomyosin contractility. *J Cell Sci.* 2010; 123:712–722. [PubMed: 20144995] [This study builds on the reported crosstalk between integrins and cadherins to show that E-cadherin-dependent adhesion strength can be stimulated in the presence of fibronectin.]
103. Hegerfeldt Y, Tusch M, Bröcker E, Friedl P. Collective cell movement in primary melanoma explants: plasticity of cell-cell interaction, beta1-integrin function, and migration strategies. *Cancer Res.* 2002; 62:2125–2130. [PubMed: 11929834]
104. Friedl P, Sahai E, Weiss S, Yamada KM. New dimensions in cell migration. *Nat Rev Mol Cell Biol.* 2012; 13:743–747. [PubMed: 23072889]
105. Ridley AJ. Rho GTPase signalling in cell migration. *Curr Opin Cell Biol.* 2015; 36:103–112. [PubMed: 26363959]
106. Jacquemet G, et al. RCP-driven  $\alpha 5\beta 1$  recycling suppresses Rac and promotes RhoA activity via the RacGAP1-IQGAP1 complex. *J Cell Biol.* 2013; 202:917–935. [PubMed: 24019536]
107. Shafaq-Zadah M, et al. Persistent cell migration and adhesion rely on retrograde transport of  $\beta(1)$  integrin. *Nat Cell Biol.* 2016; 18:54–64. [PubMed: 26641717]
108. De Franceschi N, et al. Selective integrin endocytosis is driven by interactions between the integrin  $\alpha$ -chain and AP2. *Nat Struct Mol Biol.* 2016; 23:172–179. [PubMed: 26779610]
109. Adorno M, et al. A Mutant-p53/Smad complex opposes p63 to empower TGFbeta-induced metastasis. *Cell.* 2009; 137:87–98. [PubMed: 19345189]
110. Morton JP, et al. Mutant p53 drives metastasis and overcomes growth arrest/senescence in pancreatic cancer. *Proc Natl Acad Sci U S A.* 2010; 107:246–251. [PubMed: 20018721]
111. Muller PAJ, et al. Mutant p53 drives invasion by promoting integrin recycling. *Cell.* 2009; 139:1327–1341. [PubMed: 20064378]
112. Paul NR, et al.  $\alpha 5\beta 1$  integrin recycling promotes Arp2/3-independent cancer cell invasion via the formin FHOD3. *J Cell Biol.* 2015; 210:1013–1031. [PubMed: 26370503]
113. Arjonen A, et al. Mutant p53-associated myosin-X upregulation promotes breast cancer invasion and metastasis. *J Clin Invest.* 2014; 124:1069–1082. [PubMed: 24487586]
114. Zhang H, et al. Myosin-X provides a motor-based link between integrins and the cytoskeleton. *Nat Cell Biol.* 2004; 6:523–531. [PubMed: 15156152]
115. Jacquemet G, Hamidi H, Ivaska J. Filopodia in cell adhesion, 3D migration and cancer cell invasion. *Curr Opin Cell Biol.* 2015; 36:23–31. [PubMed: 26186729]

116. Jacquemet G, et al. FiloQuant reveals increased filopodia density during breast cancer progression. *J Cell Biol.* 2017; 216:3387–3403. [PubMed: 28765364]
117. Jacquemet G, et al. L-type calcium channels regulate filopodia stability and cancer cell invasion downstream of integrin signalling. *Nat Commun.* 2016; 7
118. Beatty BT, Condeelis J. Digging a little deeper: the stages of invadopodium formation and maturation. *Eur J Cell Biol.* 2014; 93:438–444. [PubMed: 25113547]
119. Destaing O, Block MR, Planus E, Albiges-Rizo C. Invadosome regulation by adhesion signaling. *Curr Opin Cell Biol.* 2011; 23:597–606. [PubMed: 21550788]
120. Paterson EK, Courtneidge SA. Invadosomes are coming: new insights into function and disease relevance. *FEBS J.* 2017
121. Caswell PT, Vadrevu S, Norman JC. Integrins: masters and slaves of endocytic transport. *Nat Rev Mol Cell Biol.* 2009; 10:843–853. [PubMed: 19904298]
122. Pellinen T, et al. Small GTPase Rab21 regulates cell adhesion and controls endosomal traffic of beta1-integrins. *J Cell Biol.* 2006; 173:767–780. [PubMed: 16754960]
123. Nader GPF, Ezratty EJ, Gundersen GG. FAK, talin and PIPKI $\gamma$  regulate endocytosed integrin activation to polarize focal adhesion assembly. *Nat Cell Biol.* 2016; 18:491–503. [PubMed: 27043085]
124. Jahangiri A, et al. Cross-activating c-Met/ $\beta$ 1 integrin complex drives metastasis and invasive resistance in cancer. *Proc Natl Acad Sci U S A.* 2017; 114:E8694.
125. Yoshioka T, et al.  $\beta$ 4 Integrin signaling induces expansion of prostate tumor progenitors. *J Clin Invest.* 2013; 123:682–699. [PubMed: 23348745]
126. Gao J, et al. Mechanistic insights into EGFR membrane clustering revealed by super-resolution imaging. *Nanoscale.* 2015; 7:2511–2519. [PubMed: 25569174]
127. Lau LF. Cell surface receptors for CCN proteins. *J Cell Commun Signal.* 2016; 10:121–127. [PubMed: 27098435]
128. Xie D, Nakachi K, Wang H, Elashoff R, Koeffler HP. Elevated levels of connective tissue growth factor, WISP-1, and CYR61 in primary breast cancers associated with more advanced features. *Cancer Res.* 2001; 61:8917–8923. [PubMed: 11751417]
129. Huang Y, Lan Q, Lorusso G, Duffey N, Rüegg C. The matricellular protein CYR61 promotes breast cancer lung metastasis by facilitating tumor cell extravasation and suppressing anoikis. *Oncotarget.* 2017; 8:9200–9215. [PubMed: 27911269]
130. Lakshminarayan R, et al. Galectin-3 drives glycosphingolipid-dependent biogenesis of clathrin-independent carriers. *Nat Cell Biol.* 2014; 16:595–606. [PubMed: 24837829]
131. Commisso C, et al. Macropinocytosis of protein is an amino acid supply route in Ras-transformed cells. *Nature.* 2013; 497:633–637. [PubMed: 23665962]
132. Seguin L, et al. An integrin  $\beta$ 3-KRAS-RalB complex drives tumour stemness and resistance to EGFR inhibition. *Nat Cell Biol.* 2014; 16:457–468. [PubMed: 24747441]
133. Seguin L, et al. Galectin-3, a druggable vulnerability for KRAS-addicted cancers. *Cancer Discov.* 2017 [This study identifies an exciting therapeutic opportunity to target KRAS-addicted tumours by dampening the activity of galectin, a cell-surface carbohydrate that binds to, and clusters, integrin  $\alpha$  $\beta$ 3 to activate KRAS signalling.]
134. Zhang K, et al. Oncogenic K-Ras upregulates ITGA6 expression via FOSL1 to induce anoikis resistance and synergizes with  $\alpha$ V-Class integrins to promote EMT. *Oncogene.* 2017; 36:5681–5694. [PubMed: 28604746]
135. Colombo M, Raposo G, Théry C. Biogenesis, secretion, and intercellular interactions of exosomes and other extracellular vesicles. *Annu Rev Cell Dev Biol.* 2014; 30:255–289. [PubMed: 25288114]
136. EL Andaloussi S, Mäger I, Breakefield XO, Wood MJA. Extracellular vesicles: biology and emerging therapeutic opportunities. *Nat Rev Drug Discov.* 2013; 12:347–357. [PubMed: 23584393]
137. Hoshino A, et al. Tumour exosome integrins determine organotropic metastasis. *Nature.* 2015; 527:329–335. [PubMed: 26524530]

138. Holash J, et al. Vessel cooption, regression, and growth in tumors mediated by angiopoietins and VEGF. *Science*. 1999; 284:1994–1998. [PubMed: 10373119]
139. Parikh SM, et al. Excess circulating angiopoietin-2 may contribute to pulmonary vascular leak in sepsis in humans. *PLoS Med*. 2006; 3:e46. [PubMed: 16417407]
140. Hakanpaa L, et al. Endothelial destabilization by angiopoietin-2 via integrin  $\beta 1$  activation. *Nat Commun*. 2015; 6
141. Cao Y, et al. Neuropilin-2 promotes extravasation and metastasis by interacting with endothelial  $\alpha 5$  integrin. *Cancer Res*. 2013; 73:4579–4590. [PubMed: 23689123]
142. Handa A, et al. Neuropilin-2 expression affects the increased vascularization and is a prognostic factor in osteosarcoma. *Int J Oncol*. 2000; 17:291–295. [PubMed: 10891538]
143. Yasuoka H, et al. Neuropilin-2 expression in breast cancer: correlation with lymph node metastasis, poor prognosis, and regulation of CXCR4 expression. *BMC Cancer*. 2009; 9:220. [PubMed: 19580679]
144. Wang H, et al. Tumor cell  $\alpha 3\beta 1$  integrin and vascular laminin-5 mediate pulmonary arrest and metastasis. *J Cell Biol*. 2004; 164:935–941. [PubMed: 15024036]
145. Barbazán J, et al. Liver Metastasis Is Facilitated by the Adherence of Circulating Tumor Cells to Vascular Fibronectin Deposits. *Cancer Res*. 2017; 77:3431–3441. [PubMed: 28536280]
146. Bos PD, et al. Genes that mediate breast cancer metastasis to the brain. *Nature*. 2009; 459:1005–1009. [PubMed: 19421193]
147. Barney LE, et al. A cell-ECM screening method to predict breast cancer metastasis. *Integr Biol (Camb)*. 2015; 7:198–212. [PubMed: 25537447]
148. Huck L, Pontier SM, Zuo DM, Muller WJ.  $\beta 1$ -integrin is dispensable for the induction of ErbB2 mammary tumors but plays a critical role in the metastatic phase of tumor progression. *Proc Natl Acad Sci U S A*. 2010; 107:15559–15564. [PubMed: 20713705]
149. Grzesiak JJ, et al. Knockdown of the  $\beta (1)$  integrin subunit reduces primary tumor growth and inhibits pancreatic cancer metastasis. *Int J Cancer*. 2011; 129:2905–2915. [PubMed: 21491421]
150. Stoletov K, et al. Visualizing extravasation dynamics of metastatic tumor cells. *J Cell Sci*. 2010; 123:2332–2341. [PubMed: 20530574]
151. Reymond N, et al. Cdc42 promotes transendothelial migration of cancer cells through  $\beta 1$  integrin. *J Cell Biol*. 2012; 199:653–668. [PubMed: 23148235]
152. Chen MB, Lamar JM, Li R, Hynes RO, Kamm RD. Elucidation of the Roles of Tumor Integrin  $\beta 1$  in the Extravasation Stage of the Metastasis Cascade. *Cancer Res*. 2016; 76:2513–2524. [PubMed: 26988988] [The authors of this study use a 3D microfluidic model of the human microvasculature to reveal  $\beta 1$  integrin adhesion to subendothelial laminin as a critical prerequisite for successful transmigration.]
153. Kato H, et al. The primacy of  $\beta 1$  integrin activation in the metastatic cascade. *PLoS ONE*. 2012; 7:e46576. [PubMed: 23056350]
154. Barbazán J, et al. Molecular characterization of circulating tumor cells in human metastatic colorectal cancer. *PLoS ONE*. 2012; 7:e40476. [PubMed: 22811761]
155. Lai M, et al. Talin-1 overexpression defines high risk for aggressive oral squamous cell carcinoma and promotes cancer metastasis. *J Pathol*. 2011; 224:367–376. [PubMed: 21547905]
156. Sakamoto S, McCann RO, Dhir R, Kyprianou N. Talin1 promotes tumor invasion and metastasis via focal adhesion signaling and anoikis resistance. *Cancer Res*. 2010; 70:1885–1895. [PubMed: 20160039]
157. Sin S, et al. Role of the focal adhesion protein kindlin-1 in breast cancer growth and lung metastasis. *J Natl Cancer Inst*. 2011; 103:1323–1337. [PubMed: 21832234]
158. Sarvi S, et al. Kindlin-1 promotes pulmonary breast cancer metastasis. *Cancer Res*. 2018
159. Barkan D, et al. Inhibition of metastatic outgrowth from single dormant tumor cells by targeting the cytoskeleton. *Cancer Res*. 2008; 68:6241–6250. [PubMed: 18676848]
160. Shibue T, Weinberg RA. Integrin  $\beta 1$ -focal adhesion kinase signaling directs the proliferation of metastatic cancer cells disseminated in the lungs. *Proc Natl Acad Sci U S A*. 2009; 106:10290–10295. [PubMed: 19502425]

161. Shibue T, Brooks MW, Weinberg RA. An integrin-linked machinery of cytoskeletal regulation that enables experimental tumor initiation and metastatic colonization. *Cancer Cell*. 2013; 24:481–498. [PubMed: 24035453]
162. Mellor H. The role of formins in filopodia formation. *Biochim Biophys Acta*. 2010; 1803:191–200. [PubMed: 19171166]
163. Shibue T, Brooks MW, Inan MF, Reinhardt F, Weinberg RA. The outgrowth of micrometastases is enabled by the formation of filopodium-like protrusions. *Cancer Discov*. 2012; 2:706–721. [PubMed: 22609699]
164. Hanker AB, et al. Extracellular Matrix/Integrin Signaling Promotes Resistance to Combined Inhibition of HER2 and PI3K in HER2(+) Breast Cancer. *Cancer Res*. 2017; 77:3280–3292. [PubMed: 28396358]
165. Huang C, et al.  $\beta 1$  integrin mediates an alternative survival pathway in breast cancer cells resistant to lapatinib. *Breast Cancer Res*. 2011; 13:R84. [PubMed: 21884573]
166. Sethi T, et al. Extracellular matrix proteins protect small cell lung cancer cells against apoptosis: a mechanism for small cell lung cancer growth and drug resistance in vivo. *Nat Med*. 1999; 5:662–668. [PubMed: 10371505]
167. Kanda R, et al. Erlotinib resistance in lung cancer cells mediated by integrin  $\beta 1$ /Src/Akt-driven bypass signaling. *Cancer Res*. 2013; 73:6243–6253. [PubMed: 23872583]
168. Eke I, et al. Simultaneous  $\beta 1$  integrin-EGFR targeting and radiosensitization of human head and neck cancer. *J Natl Cancer Inst*. 2015; 107
169. Hirata E, et al. Intravital imaging reveals how BRAF inhibition generates drug-tolerant microenvironments with high integrin  $\beta 1$ /FAK signaling. *Cancer Cell*. 2015; 27:574–588. [PubMed: 25873177] [This article describes ‘paradoxical’ activation of melanoma-associated fibroblasts by a BRAF inhibitor, which leads to increased stromal matrix stiffening, and elevated  $\beta 1$ -integrin–SRC–FAK signalling and drug resistance in melanoma cells.]
170. Hu T, Zhou R, Zhao Y, Wu G. Integrin  $\alpha 6$ /Akt/Erk signaling is essential for human breast cancer resistance to radiotherapy. *Sci Rep*. 2016; 6
171. Park CC, Zhang HJ, Yao ES, Park CJ, Bissell MJ. Beta1 integrin inhibition dramatically enhances radiotherapy efficacy in human breast cancer xenografts. *Cancer Res*. 2008; 68:4398–4405. [PubMed: 18519702]
172. Lomonaco SL, et al. Cilengitide induces autophagy-mediated cell death in glioma cells. *Neuro-oncology*. 2011; 13:857–865. [PubMed: 21788343]
173. Mikkelsen T, et al. Radiation sensitization of glioblastoma by cilengitide has unanticipated schedule-dependency. *Int J Cancer*. 2009; 124:2719–2727. [PubMed: 19199360]
174. Mason WP. End of the road: confounding results of the CORE trial terminate the arduous journey of cilengitide for glioblastoma. *Neuro-oncology*. 2015; 17:634–635. [PubMed: 25681307]
175. Nabors LB, et al. Two cilengitide regimens in combination with standard treatment for patients with newly diagnosed glioblastoma and unmethylated MGMT gene promoter: results of the open-label, controlled, randomized phase II CORE study. *Neuro-oncology*. 2015; 17:708–717. [PubMed: 25762461]
176. Stupp R, et al. Cilengitide combined with standard treatment for patients with newly diagnosed glioblastoma with methylated MGMT promoter (CENTRIC EORTC 26071-22072 study): a multicentre, randomised, open-label, phase 3 trial. *Lancet Oncol*. 2014; 15:1100–1108. [PubMed: 25163906]
177. Élez E, et al. Abituzumab combined with cetuximab plus irinotecan versus cetuximab plus irinotecan alone for patients with KRAS wild-type metastatic colorectal cancer: the randomised phase I/II POSEIDON trial. *Ann Oncol*. 2015; 26:132–140. [PubMed: 25319061]
178. Aslan B, et al. The ZNF304-integrin axis protects against anoikis in cancer. *Nat Commun*. 2015; 6
179. Lee BY, Timpson P, Horvath LG, Daly RJ. FAK signaling in human cancer as a target for therapeutics. *Pharmacol Ther*. 2015; 146:132–149. [PubMed: 25316657]
180. Leng C, et al. An integrin beta4-EGFR unit promotes hepatocellular carcinoma lung metastases by enhancing anchorage independence through activation of FAK-AKT pathway. *Cancer Lett*. 2016; 376:188–196. [PubMed: 26996299]

181. Jiang H, et al. Targeting focal adhesion kinase renders pancreatic cancers responsive to checkpoint immunotherapy. *Nat Med.* 2016; 22:851–860. [PubMed: 27376576]
182. Serrels A, et al. Nuclear FAK controls chemokine transcription, Tregs, and evasion of anti-tumor immunity. *Cell.* 2015; 163:160–173. [PubMed: 26406376]
183. US National Library of Medicine. ClinicalTrials.gov. 2015. <https://clinicaltrials.gov/ct2/show/NCT02428270>
184. US National Library of Medicine. ClinicalTrials.gov. 2015. <https://clinicaltrials.gov/ct2/show/NCT02546531>
185. Canel M, et al. Nuclear FAK and Runx1 Cooperate to Regulate IGFBP3, Cell-Cycle Progression, and Tumor Growth. *Cancer Res.* 2017; 77:5301–5312. [PubMed: 28807942]
186. Johnston KA, Lopez KM. Lysyl oxidase in cancer inhibition and metastasis. *Cancer Lett.* 2018; 417:174–181. [PubMed: 29309816]
187. Miller BW, et al. Targeting the LOX/hypoxia axis reverses many of the features that make pancreatic cancer deadly: inhibition of LOX abrogates metastasis and enhances drug efficacy. *EMBO Mol Med.* 2015; 7:1063–1076. [PubMed: 26077591]
188. Pickup MW, et al. Stromally derived lysyl oxidase promotes metastasis of transforming growth factor- $\beta$ -deficient mouse mammary carcinomas. *Cancer Res.* 2013; 73:5336–5346. [PubMed: 23856251]
189. Wei Y, et al. Fibroblast-specific inhibition of TGF- $\beta$ 1 signaling attenuates lung and tumor fibrosis. *J Clin Invest.* 2017; 127:3675–3688. [PubMed: 28872461]
190. Levental KR, et al. Matrix crosslinking forces tumor progression by enhancing integrin signaling. *Cell.* 2009; 139:891–906. [PubMed: 19931152]
191. Baker A, et al. The role of lysyl oxidase in SRC-dependent proliferation and metastasis of colorectal cancer. *J Natl Cancer Inst.* 2011; 103:407–424. [PubMed: 21282564]
192. Rao CV, Janakiram NB, Mohammed A. Molecular Pathways: Mucins and Drug Delivery in Cancer. *Clin Cancer Res.* 2017; 23:1373–1378. [PubMed: 28039261]
193. Freeman SA, et al. Integrins Form an Expanding Diffusional Barrier that Coordinates Phagocytosis. *Cell.* 2016; 164:128–140. [PubMed: 26771488]
194. Woods EC, et al. A bulky glycocalyx fosters metastasis formation by promoting G1 cell cycle progression. *Elife.* 2017; 6
195. Raina D, et al. Direct targeting of the mucin 1 oncoprotein blocks survival and tumorigenicity of human breast carcinoma cells. *Cancer Res.* 2009; 69:5133–5141. [PubMed: 19491255]
196. Joshi MD, et al. MUC1 oncoprotein is a druggable target in human prostate cancer cells. *Mol Cancer Ther.* 2009; 8:3056–3065. [PubMed: 19887552]
197. US National Library of Medicine. ClinicalTrials.gov. 2014. <https://clinicaltrials.gov/ct2/show/NCT01279603>
198. Rao CV, et al. Small-Molecule Inhibition of GCNT3 Disrupts Mucin Biosynthesis and Malignant Cellular Behaviors in Pancreatic Cancer. *Cancer Res.* 2016; 76:1965–1974. [PubMed: 26880801]
199. Notni J, et al. Variation of Specific Activities of  $^{68}\text{Ga}$ -AQUIBEPRIN and  $^{68}\text{Ga}$ -AVEBETRIN Enables Selective PET Imaging of Different Expression Levels of Integrins  $\alpha 5\beta 1$  and  $\alpha \nu\beta 3$ . *J Nucl Med.* 2016; 57:1618–1624. [PubMed: 27151985]
200. Notni J, et al. Complementary, Selective PET Imaging of Integrin Subtypes  $\alpha 5\beta 1$  and  $\alpha \nu\beta 3$  Using  $^{68}\text{Ga}$ -AQUIBEPRIN and  $^{68}\text{Ga}$ -AVEBETRIN. *J Nucl Med.* 2016; 57:460–466. [PubMed: 26635338]
201. Notni J, et al. In Vivo PET Imaging of the Cancer Integrin  $\alpha \nu\beta 6$  Using ( $^{68}\text{Ga}$ )-Labeled Cyclic RGD Nonapeptides. *J Nucl Med.* 2017; 58:671–677. [PubMed: 27980050]
202. US National Library of Medicine. ClinicalTrials.gov. 2007. <https://clinicaltrials.gov/ct2/show/NCT00565721>
203. US National Library of Medicine. ClinicalTrials.gov. 2016. <https://clinicaltrials.gov/ct2/show/NCT02683824>
204. Gudem G, et al. The evolutionary history of lethal metastatic prostate cancer. *Nature.* 2015; 520:353–357. [PubMed: 25830880]

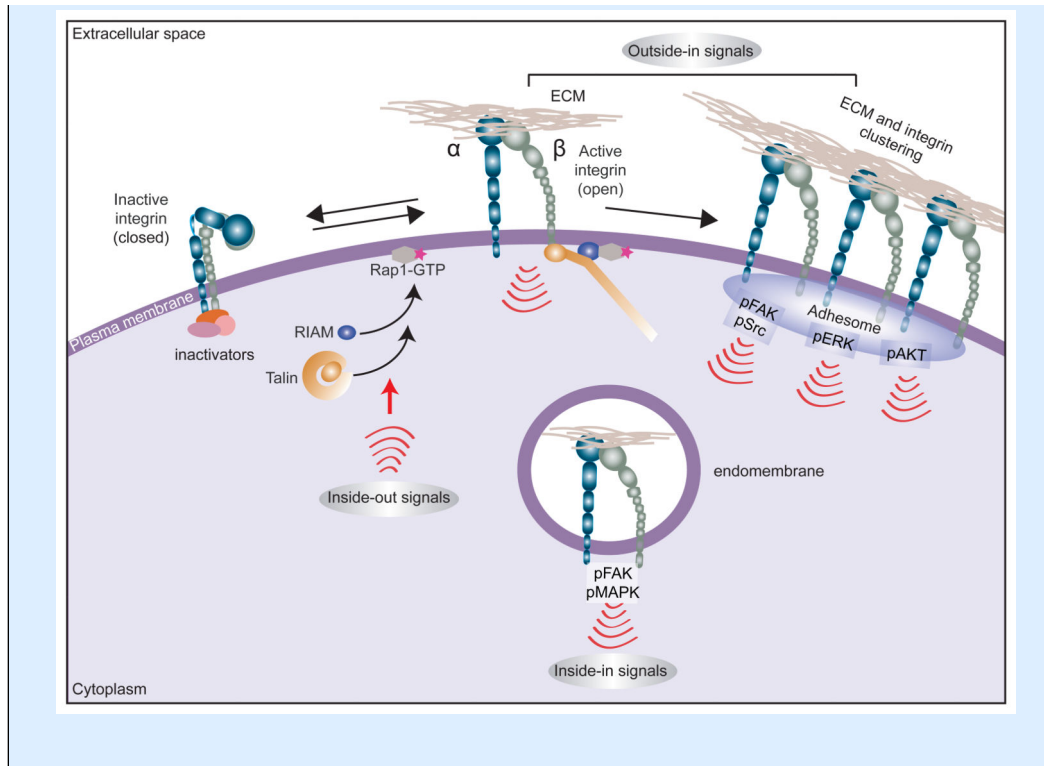
205. Shattil SJ, Kim C, Ginsberg MH. The final steps of integrin activation: the end game. *Nat Rev Mol Cell Biol.* 2010; 11:288–300. [PubMed: 20308986]
206. Lilja J, et al. SHANK proteins limit integrin activation by directly interacting with Rap1 and R-Ras. *Nat Cell Biol.* 2017; 19:292–305. [PubMed: 28263956]
207. Avraamides CJ, Garmy-Susini B, Varner JA. Integrins in angiogenesis and lymphangiogenesis. *Nat Rev Cancer.* 2008; 8:604–617. [PubMed: 18497750]
208. Topalian SL, Drake CG, Pardoll DM. Immune checkpoint blockade: a common denominator approach to cancer therapy. *Cancer Cell.* 2015; 27:450–461. [PubMed: 25858804]
209. Kwan BH, et al. Integrin-targeted cancer immunotherapy elicits protective adaptive immune responses. *J Exp Med.* 2017; 214:1679–1690. [PubMed: 28473400]
210. Yu X, et al. Inhibiting Metastasis and Preventing Tumor Relapse by Triggering Host Immunity with Tumor-Targeted Photodynamic Therapy Using Photosensitizer-Loaded Functional Nanographenes. *ACS Nano.* 2017; 11:10147–10158. [PubMed: 28901740]
211. Liu X, et al. Tumor-penetrating peptide enhances transcytosis of silicasome-based chemotherapy for pancreatic cancer. *J Clin Invest.* 2017; 127:2007–2018. [PubMed: 28414297]
212. Man YKS, et al. The Novel Oncolytic Adenoviral Mutant Ad5-3 -A20T Retargeted to  $\alpha v \beta 6$  Integrins Efficiently Eliminates Pancreatic Cancer Cells. *Mol Cancer Ther.* 2018; 17:575–587. [PubMed: 29367266]



**Box 1****Multidirectional integrin signalling**

Integrins are unique bidirectional signalling molecules that exist in different conformational states that determine the receptor affinity for extracellular matrix (ECM) proteins: a bent (closed) integrin represents the inactive form, with low affinity for ECM ligands, whereas a fully extended (open) integrin is active and capable of eliciting downstream signalling and cellular responses following ligand engagement. Many ECM proteins contain multivalent integrin recognition sites and/or are assembled as multiprotein deposits or fibrils in the extracellular compartment. Ensuing integrin–ligand engagement (adhesion) and clustering on the plasma membrane provides a platform for the assembly of multimeric complexes that provoke downstream adhesion signalling ('outside-in' signalling). This outside-in signal is heterodimer-dependent and context-dependent (for example, specific to the cell type or the ECM ligand engaged or dictated by ECM properties) but typically involves recruitment and autophosphorylation of focal adhesion kinase (FAK) with subsequent recruitment and activation of SRC<sup>1,5</sup>. Integrin adhesion also activates, among other pathways, the RAS–MAPK and PI3K–AKT signalling nodes. Integrins also respond to 'inside-out' signals, whereby stimulation of small GTPase RAP1A activity on the plasma membrane triggers recruitment of RAP1-GTP-interacting adaptor molecule (RIAM; also known as APBB1IP) to activate talin. Talin binding to the  $\beta$ -integrin subunit tail triggers an extended open receptor conformation and recruitment of additional integrin-activating proteins such as kindlins<sup>205</sup>. Integrin activation can be counterbalanced by inactivating proteins such as integrin cytoplasmic domain-associated protein 1 (ICAP-1; also known as ITGB1BP1), filamin A, SHARPIN and proteins of the SH3 and multiple ankyrin repeat domains (SHANK) family, which, directly or indirectly, restrict the ability of talin to bind and activate integrins<sup>16,206</sup>.

Integrins have also been demonstrated to be functional in subcellular locations other than plasma membrane adhesion sites, where their roles are well recognized. Active integrins and integrin-dependent signalling complexes, along with ECM ligands or receptor tyrosine kinases found within endosomes, can trigger 'inside-in' signalling<sup>44,45,123</sup> (see also Fig. 2).

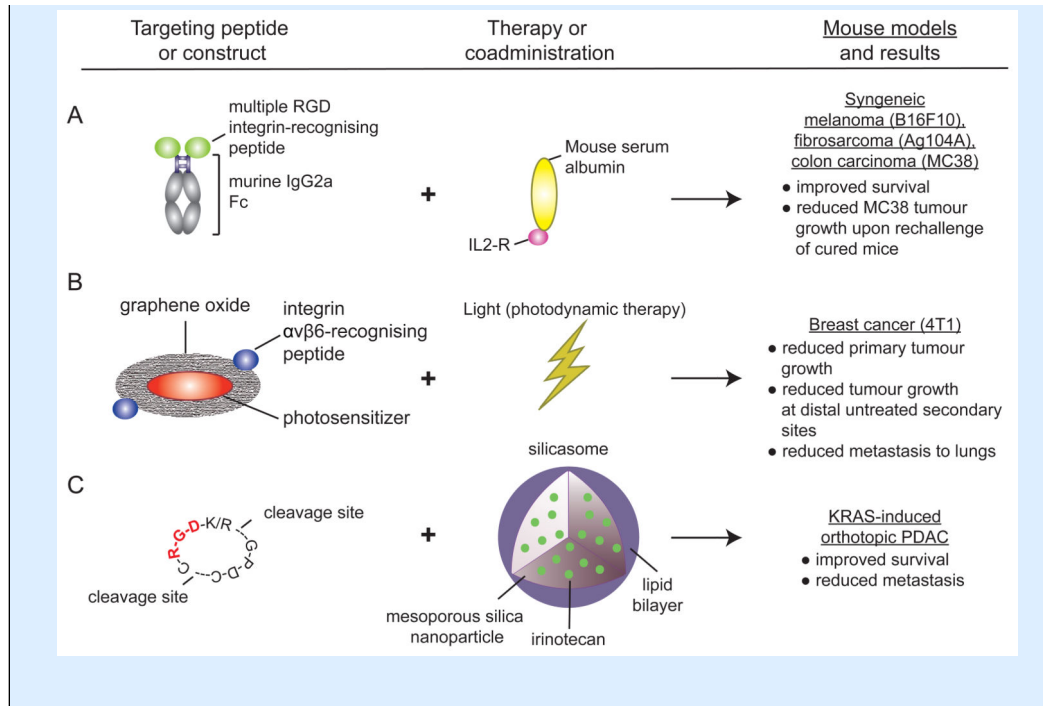


**Box 2****A second chance for integrin-targeting agents in cancer therapy?**

The identification of Arg-Gly-Asp (RGD) motif-binding  $\alpha 5\beta 1$  integrin and  $\alpha v$  integrin expression in the tumour vasculature, combined with their important roles in vascular biology and angiogenesis<sup>207</sup>, initiated the development of RGD peptide-specific antagonists, as potential anti-angiogenic cancer therapies<sup>185</sup>, and imaging tracers<sup>199,200,201</sup>. However, the success of integrin antagonists in preclinical cancer models has not been reflected in clinical settings<sup>11</sup>, calling for alternative strategies to target integrin function.

New studies are now exploiting RGD integrins not in their capacity as extracellular matrix (ECM) adhesion molecules but rather as validated tumour-associated antigens to selectively deliver antitumour agents (see the figure). Recent successes of immune checkpoint inhibitors, which were developed to induce T cell antitumour activity, have prompted a wide interest towards cancer immunotherapy<sup>208</sup>. In a recent study, a highly specific RGD integrin imaging peptide fused to the Fc-domain of immunoglobulin G2a (IgG2a) was used to direct antibody-dependent cell-mediated cytotoxicity<sup>209</sup>. This peptide, when administered alongside an interleukin-2 (IL-2) fusion protein, was shown to promote CD8<sup>+</sup> T cell and natural killer cell activation and was demonstrated to significantly improve survival in preclinical models of melanoma, colorectal cancer and fibrosarcoma. The observed efficacy was attributed to efficient recruitment of host immune cells to the tumours, rather than through any antagonism of integrin function<sup>209</sup> (see the figure, part **a**). Another study exploited an  $\alpha v\beta 6$  integrin-specific peptide to generate a tumour-targeted photosensitizer, which, when used in photodynamic therapy resulted in effective ablation of primary lung tumours in mouse models. The resulting necrotic tumour cells triggered dendritic cell activation and a CD8<sup>+</sup> T cell response to destroy residual tumour cells and suppress tumour relapse<sup>210</sup> (see the figure, part **b**).

Others have shown that co-administration of an internalized RGD (iRGD) peptide with affinity for both RGD integrins and neuropilin 1 (NRP1) increases cellular uptake via NRP1 of silicasome carriers loaded with the chemotherapeutic drug irinotecan, resulting in improved survival and markedly reduced metastasis in a pancreatic adenocarcinoma (PDAC) mouse model<sup>211</sup> (see the figure, part **c**). In another example, the potential for redesigning replication-selective oncolytic adenoviruses to include expression of an  $\alpha v\beta 6$  integrin-specific peptide to specifically target cancer cells has been demonstrated in a PDAC mouse model<sup>212</sup>.



## Glossary

### Angiogenesis

A physiological process characterized by the formation of new blood vessels from pre-existing vasculature, which can be deregulated during disease to promote the spread of cancer cells.

### Intravasation

The invasion of cancer cells through a basement membrane to enter blood or lymphatic vessels.

### Extravasation

The movement of cells out of a blood vessel, which involves traversing an endothelial cell layer and basement membrane, into the surrounding tissue.

### Anoikis

A specialized form of programmed cell death, which occurs upon loss of integrin-mediated adhesion to the extracellular matrix.

### Thrombus

Also known as a blood clot, a structure that is the final result of blood coagulation. A thrombus consists of aggregated platelets and red blood cells and a mesh of crosslinked fibrin.

### Desmoplasia

The growth of fibrous or connective tissue wherein resident cells produce excess fibrous matrix components such as collagen.

### Mechanoreceptors

A term used to define receptors capable of receiving and translating mechanical cues from the environment.

### Focal adhesion

Integrin-mediated cell–extracellular matrix contact that is connected to the actin cytoskeleton and acts as both a physical anchor and a signalling hub to regulate the cell's response to extracellular cues.

### Lysyl oxidase (LOX) enzymes

Extracellular copper-dependent enzymes that act on lysine residues in collagen and elastin to promote crosslinking of these matrix molecules.

### Haptotaxis

Directional cell migration on an extracellular matrix gradient towards higher matrix concentrations.

### Filopodia

Actin-rich, finger-like membrane protrusions that extend out of the cell to probe the extracellular matrix.

#### Invadopodia

Actin-based membrane protrusions found in invasive carcinoma cells and associated with sites of extracellular matrix degradation.

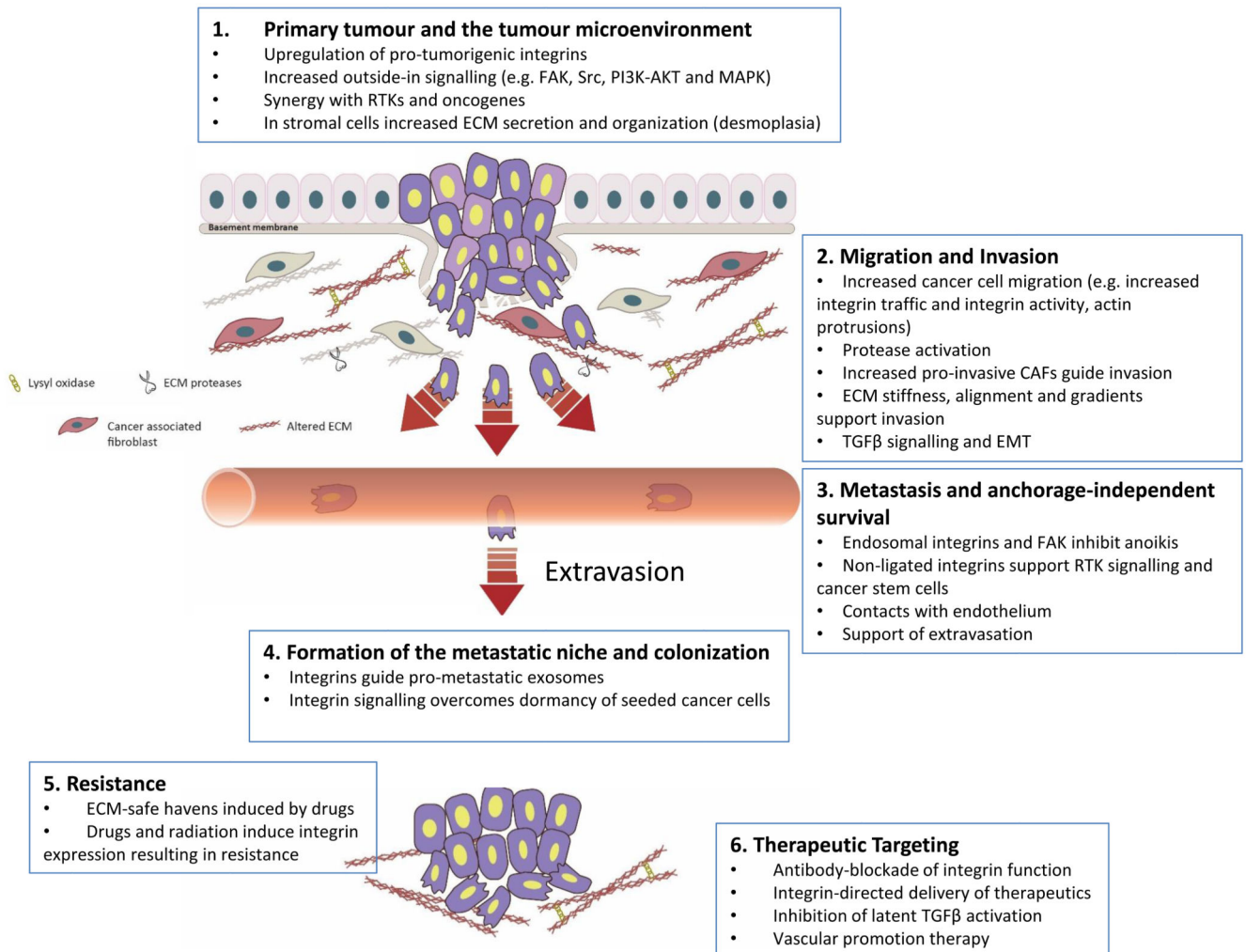
#### Glycocalyx

Also known as the pericellular matrix, an external cell layer that contains a fibrous meshwork of carbohydrates (oligosaccharides, glycoproteins and mucins). This layer projects from the cell surface to cover the cell membrane in many animal cells and bacteria.

#### Photodynamic therapy

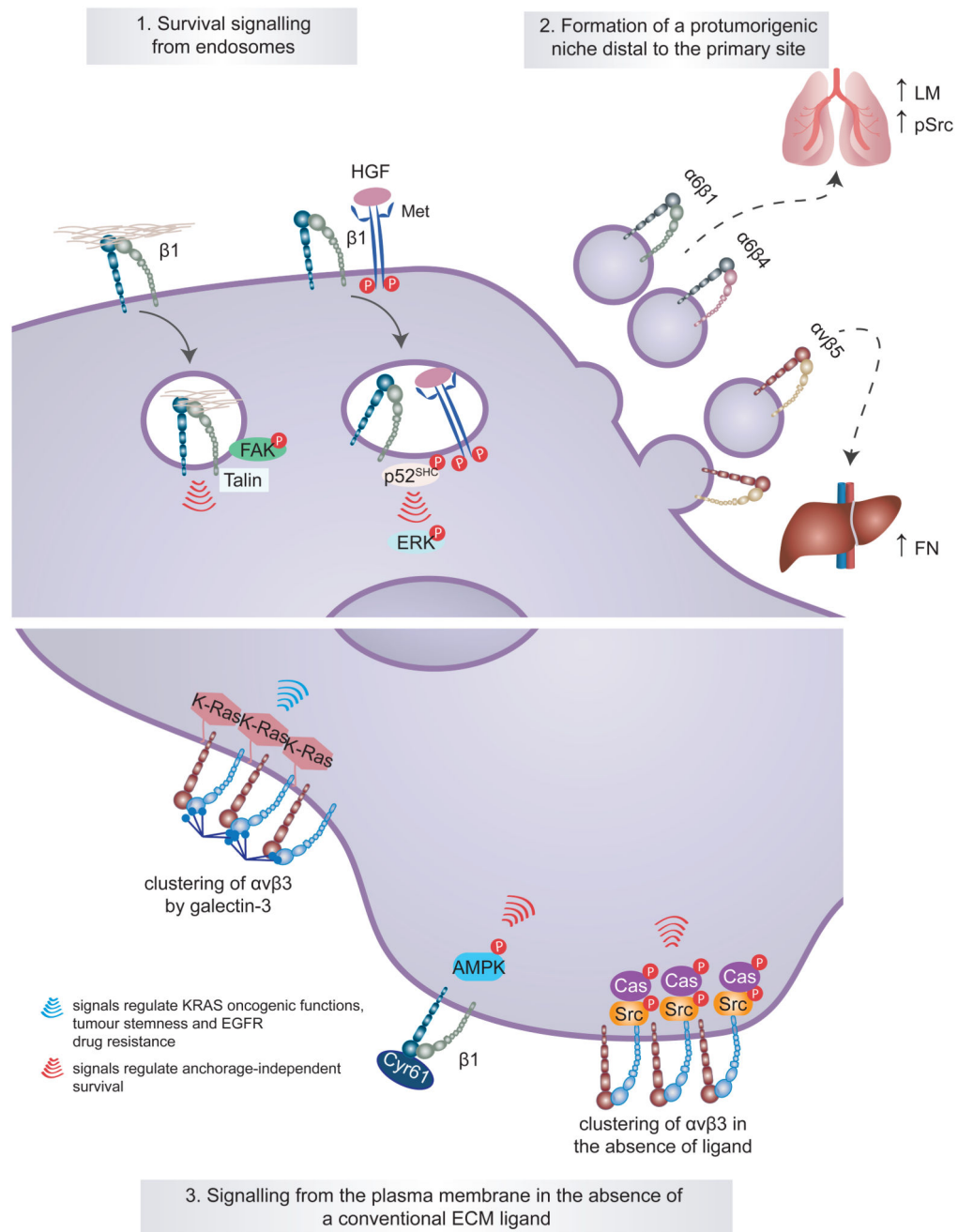
A medical treatment that uses a photosensitizing molecule (frequently a drug that becomes activated by light exposure) and a light source to activate the administered drug.





**Fig. 1. Integrin involvement in many of the steps of cancer progression.**

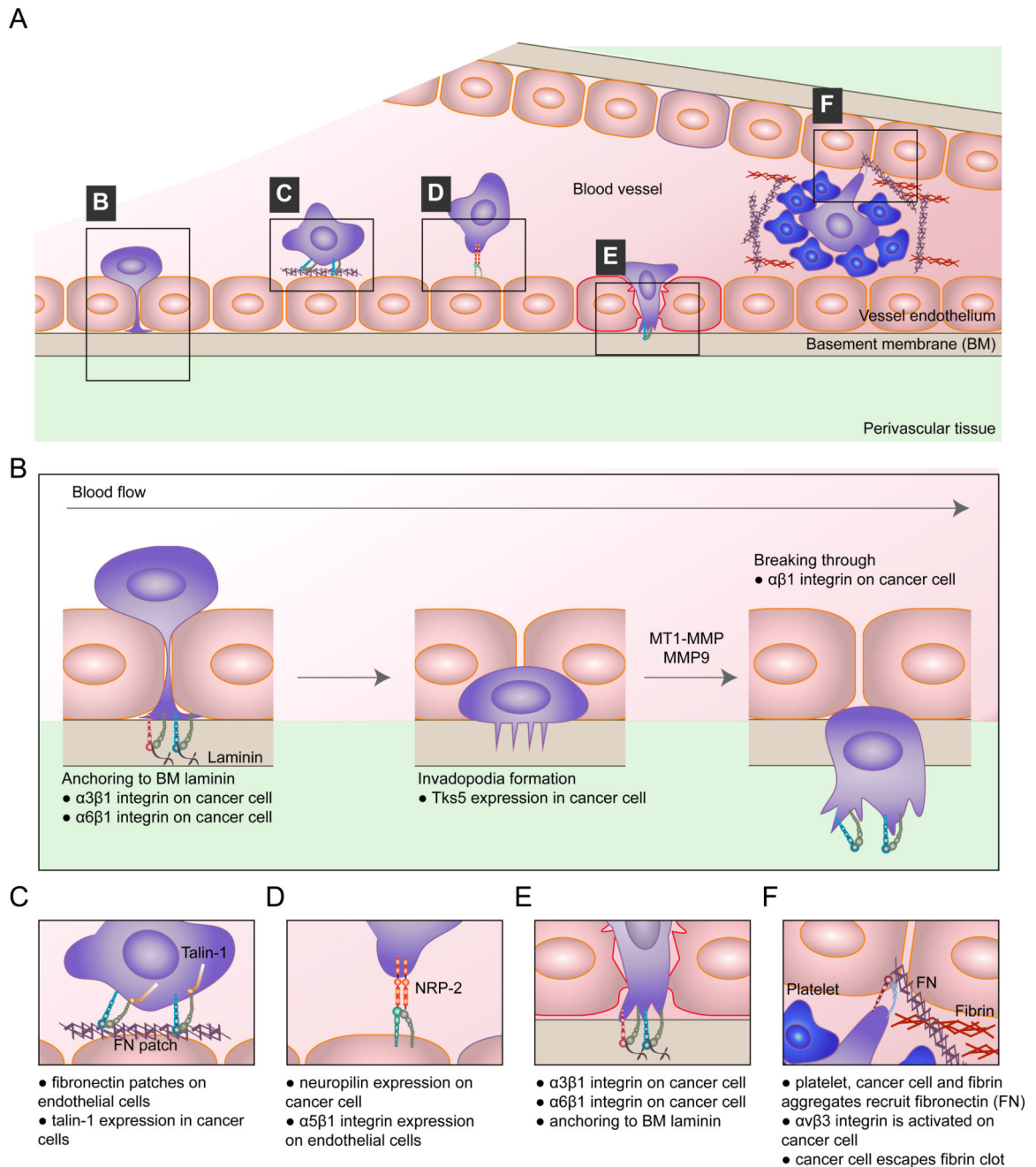
Integrin expression and/or function have been implicated in nearly every stage of cancer development from primary tumour formation to cancer cell extravasation and formation of a metastatic niche (parts 1–4). In addition, integrin signalling has been linked to the acquisition of drug resistance (part 5). This fact, together with the vital roles of integrins in cancer, has rendered integrins and integrin-dependent functions attractive therapeutic targets in the fight against cancer (part 6). CAF, cancer-associated fibroblast; ECM, extracellular matrix; EMT, epithelial-to-mesenchymal transition; FAK, focal adhesion kinase; RTK, receptor tyrosine kinase; TGF $\beta$ , transforming growth factor- $\beta$ .



**Fig. 2. Unconventional integrin signalling contributes to cancer cell survival, stemness and drug resistance.**

Classical integrin signalling has been described to be restricted to the plasma membrane and to require intact integrin–extracellular matrix (ECM) ligand engagement. However, it is now clear that unconventional modes of integrin signalling exist and contribute to cancer cell survival and disease progression. For example, active integrin signalling has been shown to be maintained away from the plasma membrane following integrin endocytosis in the presence of an ECM ligand or hepatocyte growth factor (HGF)-stimulated receptor tyrosine kinase MET and to contribute to anchorage-independent growth and survival of cancer cells

through different pathways (part 1). A more extreme example of long-range integrin signalling has been illustrated in tumour exosomes and is associated with disease advancement. Tumour exosomal  $\alpha6\beta1$  integrin and  $\alpha6\beta4$  integrin appear to target metastatic cells to the lung, whereas exosomal  $\alpha v\beta5$  integrin is linked to liver metastasis. At these defined sites, the exosomes prepare a premetastatic niche by triggering the expression of specific ECM components (higher laminin and elevated SRC phosphorylation (pSRC) in lung fibroblasts and elevated fibronectin in the liver) and pro-inflammatory S100 proteins in the target tissue (part 2). Integrin signalling from the plasma membrane can also be unconventional and occur in the absence of an ECM ligand or be promoted by the interaction of non-structural ECM proteins such as galectin 3 and cysteine-rich angiogenic inducer 61 (CYR61) with the integrin extracellular domains (part 3). AMPK, AMP-activated protein kinase; CAS, CRK-associated substrate; EGFR, epidermal growth factor receptor; FAK, focal adhesion kinase; P, phosphorylation; p52-SHC, p52 isoform of SHC-transforming protein 1.



**Fig. 3. Integrins in extravasation.**

The top panel shows a schematic of integrin-mediated extravasation of circulating tumour cells (CTCs) (part **a**). The mechanisms involved in this process are  $\alpha 3 \beta 1$  integrin-mediated and  $\alpha 6 \beta 1$  integrin-mediated cancer cell adhesion to subendothelial laminin, which is required for successful transendothelial migration.  $\beta 1$  integrin is also a prerequisite for tumour cells to fully clear the endothelial layer and invade into the basement membrane (part **b**). The presence of fibronectin patches on endothelial cells promotes cancer cell adhesion to the vessel wall in a manner dependent on the integrin activator talin 1 (part **c**).

Endothelial cells also express integrins. Endothelial  $\alpha 5$  integrin directly binds to neuropilin 2 (NRP2), a receptor for vascular endothelial growth factor (VEGF) and the semaphorin family of proteins, on cancer cells, and this interaction promotes cancer cell attachment to the endothelium and subsequent extravasation (part **d**). Pre-existing patches of exposed basement membrane can promote CTC arrest on the vascular wall in a mechanism whereby exposed laminin is engaged by  $\alpha 3\beta 1$  integrin on the tumour cell (part **e**). Features of the blood clotting cascade can promote integrin-mediated cancer cell invasive protrusion and extravasation, such as local recruitment of plasma fibronectin to trigger  $\alpha \nu \beta 3$  integrin activation (part **f**). MMP, matrix metalloproteinase; MT1, membrane type 1; TKS5, tyrosine kinase substrate with five SH3 domains (also known as SH3PXD2A).