

Research Article

Simultaneous Determination of Seven Active Components in Rat Plasma by UHPLC-MS/MS and Application to a Quantitative Study after Oral Administration of Huang-Lian Jie-Du Decoction in High Fat-Induced Atherosclerosis Rats

Li Jiang,^{1,2} Yanling Xiong,¹ Lanbin Yu,³ Yu Chen,¹ Qiyun Zhang,¹ Xue Ding,⁴ Xiaojun Yan ,¹ Peng Nie,¹ and Guoliang Xu ^{1,2}

¹Jiangxi Provincial Key Laboratory of TCM Etiopathogenesis, Jiangxi University of Traditional Chinese Medicine, Nanchang 330004, China

²Key Laboratory of Pharmacology of Traditional Chinese Medicine in Jiangxi, Nanchang 330004, China

³Pharmacy Department of Zhejiang Hospital, Hangzhou 310013, China

⁴Center for Health System and Policy Research, Institute of Medical Information, Chinese Academy of Medical Sciences, Beijing 100020, China

Correspondence should be addressed to Guoliang Xu; xuguoliang6606@126.com

Received 13 April 2019; Revised 23 May 2019; Accepted 10 June 2019; Published 1 July 2019

Academic Editor: Samuel Carda-Broch

Copyright © 2019 Li Jiang et al. This is an open access article distributed under the Creative Commons Attribution License, which permits unrestricted use, distribution, and reproduction in any medium, provided the original work is properly cited.

Huang-Lian Jie-Du decoction (HLJDD) has been used to treat cardiovascular and cerebrovascular disease for many years in China. Currently, the determination of effect components in HLJDD is focusing either on the formula or on the extract, while quantification of that in biological samples is scarce, especially simultaneous determination of multicomponent. In this paper, a rapid, specific, and sensitive ultra-high performance liquid chromatography-tandem mass spectrometry method was developed and fully validated for the simultaneous determination of seven main active constituents, i.e., baicalin, baicalein, wogonoside, wogonin, berberine, palmatine, jatrorrhizine in rat plasma. The method was also successfully applied to a quantitative study after oral administration of HLJDD at different doses of 1.5, 3, and 6 g/kg body weight to high fat-induced atherosclerosis rats. The analytes were detected by ESI source and multiple reactions monitoring (MRM) using positive scanning mode. The blood was collected from the abdominal aorta of rats at predetermined time and preprepared with icariin and tetrahydropalmatine as internal standards (IS). Sample preparation was achieved by protein precipitation (PPT). The validation parameters (linearity, sensitivity, intra-/interday precision and accuracy, extraction recovery, and matrix effect) were within acceptable ranges, and biological extracts were stable during the entire storing and preparing process. And the result of determination of HLJDD-containing plasma, baicalin, baicalein, wogonoside, and wogonin could be highly detected in a dose-dependent manner while berberine, jatrorrhizine, and palmatine were determined in a very low level and in a dose-independent mode. Thus, the established method was sensitive enough and successfully applied to the determination of seven effective components in plasma taken from 24 high fat-induced atherosclerosis rats after oral administration of three dosages of HLJDD.

1. Introduction

Atherosclerosis (AS) is a chronic disease with a typical pathological process of abnormal lipid metabolism, i.e., infiltrating into the arterial intima and depositing on the vessel wall which triggers inflammation and then in turn leads to the abnormal response to injury of the vessel

wall [1], such as alteration, exudation, and proliferation. These pathological changes are also prone to myocardial infarction, angina pectoris, arrhythmia, stroke, and severe sudden death. A large number of clinical and basic studies have shown that the risk factors for AS include hyperlipidemia, hypertension, hyperglycemia, obesity, and metabolic disorders of autologous bioactive substances [2]. Although

the pathogenesis of AS is not fully understood, inflammation-injury-reaction theory proposed by Professor Ross [3] has been widely recognized around the world. The medicine used to treat AS currently is mostly anti-inflammatory drugs, and it has become a new way to prevent and treat AS. However, there is still a lack of effective drugs for AS. In TCM, there are many theories according to the pathogenesis of AS, such as damp heat (Shi Re in Chinese), toxic pathogen (Du Xie in Chinese), and phlegm stasis (Tan Yu in Chinese); that is to say, therapeutic principles of clearing away heat and dampness and detoxicating would be effective for AS.

Hang-Lian Jie-Du Decoction (HLJDD), a classic prescription of TCM, was composed of four common herbs at the ratio of 3:2:2:3: *Rhizome Coptidis*, *Radix Scutellariae*, *Cortex Phellodendri*, and *Fructus Gardeniae*. This formula, first recorded by a doctor named Wang Tao in his monograph “*Wai Tai Mi Yao*” (Chinese Tang Dynasty), had been used for 1700 years in China [4] and was mainly depending on clearing away heat-toxin to intervene in the inflammatory disorder, the basic pathophysiological process of AS [3]. The existing research showed that HLJDD has a number of pharmacological effects such as anti-inflammation, lowering blood sugar, regulating blood lipids, and antioxidation. Thus, it was used widely to treat diseases such as coronary heart disease [5], diabetes [6], hypertension [7], angina [8], and myocardial infarction [9] in clinic. Recently, accumulating evidence has shown HLJDD’s efficacy on AS [10] and the components in HLJDD have been extensively studied in order to elucidate the mechanism. For example, berberine, the component of *Rhizome Coptidis* and *Cortex Phellodendri*, could inhibit the synthesis of lipids by activating AMP enzymes and controlling LDL receptor expression [11]. The extracts of *Radix Scutellariae* could significantly reduce the content of oxidation of LDL and suppress inflammatory responses in macrophages [12]. The effective ingredients in *Fructus Gardeniae* could reduce the fat by inhibiting the activity of pancreatic lipase [13]. In addition, alkaloids (e.g., berberine, palmatine, and jatrorrhizine), flavonoids (e.g., baicalin, baicalein, wogonoside, and wogonin), and iridoids (e.g., geniposide and shanzhiside) were the major active components of HLJDD according to the previous phytochemical research [14–16]. Thus, it was essential to quantify the above effective components accurately in HLJDD treated for AS. However, the reported pharmacokinetic studies of HLJDD failed to fully reflect the in vivo process of the compound due to its limited components in recent years. Moreover, to date, the multicomponents of this effective and traditional formula in biological samples (e.g., AS rats) have been rarely provided so far. Generally, UHPLC-MS/MS has been regarded as one of the premier tools in complex biological samples, especially for properties of Chinese medicine formulae. Therefore, we developed a UHPLC-MS/MS method for simultaneous determination of the above components in rat plasma. Then the method was used to quantify the active ingredients (Figure 1) in AS rat plasma after three oral dosages of HLJDD.

2. Experimental

2.1. Materials and Chemicals. The medicinal materials of *Rhizome Coptidis*, *Radix Scutellariae*, *Cortex Phellodendri*, and *Fructus Gardeniae* were purchased from Jiangxi Jiangzhong Traditional Chinese Medicine Pieces Company and they were authenticated by Professor Shouwen Zhang (School of Pharmacy, Jiangxi University of Traditional Chinese Medicine, China). Baicalin was obtained from National Institutes for Food and Drug Control. Baicalein, wogonoside, wogonin, berberine, palmatine, jatrorrhizine geniposide, icariin, and tetrahydropalmatine were purchased from National Pharmaceutical Engineering Center for Solid Preparation in Chinese Herbal Medicine. The purity of these standards was more than 98.0%. HPLC-grade methyl alcohol (MeOH) and acetonitrile (ACN) were obtained from Merck (Merck, Germany), and formic acid and ammonium formate were of chromatographic purity and were purchased from DikmaPure (DikmaPure, USA) and Sigma (Sigma, USA), respectively. Deionized water was prepared by a Millipore Alpha-Q water purification system (Millipore, USA). Other chemicals and solvents were all of analytical grade.

2.2. Preparation of HLJDD. An amount of crude drug equivalent to a daily dose of Huang-Lian-Jie-Du decoction was weighed, and the four medicinal herbs (*Rhizome Coptidis*, *Radix Scutellariae*, *Cortex Phellodendri*, and *Fructus Gardeniae*) were mixed in the ratio 3: 2: 2: 3. The medicinal materials were soaked for 1 h and refluxed with water (1:6, w/v) for 30 min. Filtrates were collected and the residues were then refluxed in water (1:4, w/v) for 20 min. Two batches of filtrates were combined and the obtained solution was concentrated by a rotatory vacuum evaporator concentrated to 0.5g/mL crude herb. Then the extract was stored at 4°C before use.

2.3. Preparation of Stock and Working Solutions. Accurately weigh a certain amount of baicalin, baicalein, wogonoside, wogonin, berberine, palmatine, jatrorrhizine, icariin, and tetrahydropalmatine in a 25mL volumetric flask, dissolved and diluted to the concentration of 144, 92, 176, 140, 200, 116, 423, 480, and 488 µg/mL, respectively, as the stock solutions. Then the stock solutions were further diluted into 21.0–26250, 20.0–17500, 20.0–18750, 20.0–1367, 0.50–781.25, 0.50–566.40, 0.50–250, 80.0, and 5.0 ng/mL, respectively, as the working solutions.

2.4. Preparation of Calibration Standard and Quality Control (QC) Samples. The calibration standard samples were prepared by freshly spiking the appropriate working solution into blank plasma yielding the concentrations of 2.1–2625, 2.0–1750, 2.0–1875, 2.0–136.72, 0.25–78.13, 0.25–56.64, and 0.25–25 ng/mL for baicalin, baicalein, wogonoside, wogonin, berberine, palmatine, and jatrorrhizine, respectively, and processed as described in the sample preparation. Quality control (QC) samples used for the intra- and interday accuracy and precision, extraction recovery, and stability study were prepared in the same way as calibration standard samples at concentrations of 2.1, 25.0, and 2625 ng/ml for baicalin; 2.0,

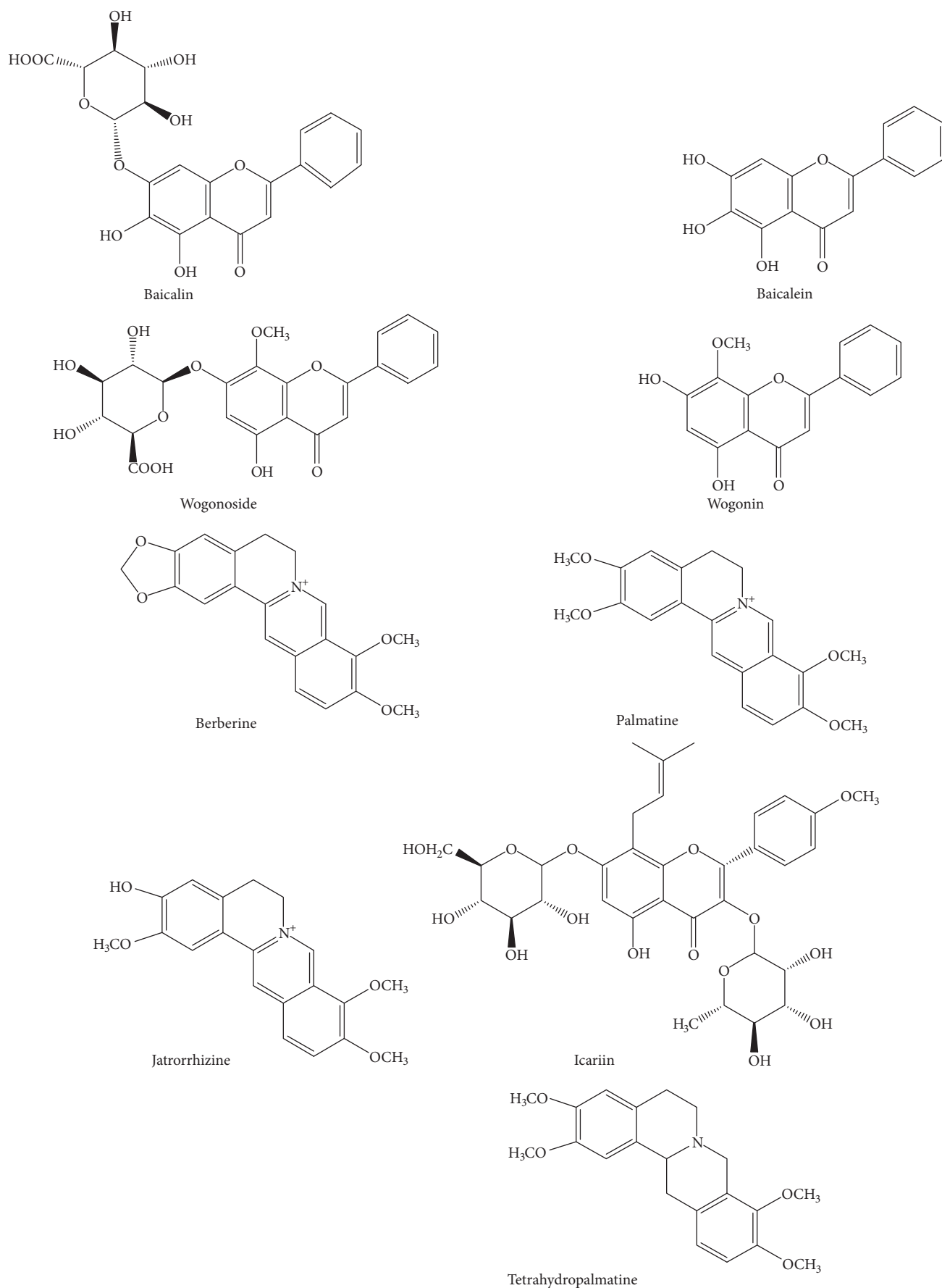


FIGURE 1: Chemical structures of baicalin, baicalein, wogonoside, wogonin, berberine, palmatine, jatrorrhizine, icariin (I.S.), and tetrahydropalmatine (I.S.).

25.0, and 575 ng/ml for baicalein; 2.0, 25.0, and 1875 ng/ml for wogonoside; 2.0, 25.7, and 136.72 ng/ml for wogonin; and 0.25, 2.5, and 25.0 ng/ml for berberine, palmatine, and jatrorrhizine.

2.5. Plasma Sample Preparation. An aliquot of 100 μ L thawed plasma sample was transferred into an Eppendorf tube (EP tube), to which 10 μ L of seven analytes and internal standards solution from each working solution were added. After being vortexed for 15 s, 100 μ L methanol plus 300 μ L acetonitrile was added and rested for 3 h following vortex mixing for 30 s to precipitate protein. Subsequently, the mixture was centrifuged at 15,000 \times g for 10 min. 400 μ L supernatant was transferred into another EP tube and evaporated to dryness under the stream of nitrogen in a water bath at 40°C. The residue was dissolved in 100 μ L of reconstituted solution which consisted of acetonitrile-0.1% formic acid (9:1, v/v) and then centrifuged at 18,000 \times g for 15 min after vortexing for 2 min. The supernatant was injected into the UHPLC-MS/MS system for analysis.

2.6. Instruments and Chromatographic Conditions. The analysis was performed using the Shimadzu UHPLC system (Shimadzu Corporation, Kyoto, Japan) consisting of an LC-30AD binary pump, a DGU-20A5 degassing unit, a SIL-30AC autosampler, and a CTO-30A5R column oven. Mass spectrometric detection was conducted on an AB Sciex Qtrap 5500 System (Applied Biosystems, Foster City, CA, USA) and equipped with Analyst software (version 1.6.2) for data processing. Chromatographic separation was achieved on a Shimadzu Shim-pack XR-ODS III (1.6 μ m, 2.0 mm \times 75 mm, Shimadzu Corporation, Kyoto, Japan). The mobile phase consisted of 5 mM ammonium formate-0.1% formic acid (solvent A) and acetonitrile (solvent B). The gradient elution conditions were optimized as follows: 10-20% B (0-3 min), 20-45% B (3-4.5 min), 45% B (4.5-7 min), 45-80% B (7-12 min), 80-95% B (12-14 min), 95-10%B (15-15.5 min), and 10% B (15.5-16 min). The flow rate was set at 0.3mL/min with the column temperature maintained at 40°C. The injection volume of 1 μ L was used for the reference standards and samples.

For mass detection, the electrospray ionization source was operated in positive mode. The operating parameters were optimized under the following conditions: 500°C for the interface temperature and 5.5 kV for the ion spray voltage; ion source gas 1 and gas 2 were fixed at 50 psi. Vacuum was obtained by a Turbo molecular pump (Agilent Technologies, USA). Nitrogen generated by the high purity nitrogen generator (99.999%, Peak Scientific Instruments Ltd., UK) was used as the source of curtain gas (30 psi) and collision gas (7 psi). The optimized multiple reaction monitoring (MRM) parameters including collision energy and declustering potential are listed in Table 1.

2.7. Validation of the UPLC-MS/MS Method. The proposed method was validated for specificity, extraction recovery,

matrix effect, LLOQ, linearity, and stability. Meanwhile, intra- and interday validation were performed to evaluate the accuracy and precision of the measurements.

2.7.1. Specificity, Linearity, Lower Limits of Detection, and Quantification. To investigate the specificity of this method, chromatogram comparison of blank plasma, blank plasma spiked with IS/analyte, and rat plasma samples were conducted to assay for the exclusion of any endogenous interference existing at or close to the expected retention time of the analytes. Calibration curves were established from peak area ratios (analyte peak area to the internal standard peak area, As/Ai) versus nominal concentrations using a linear least-squares regression model (1/X² weighting).

2.7.2. Precision and Accuracy. Intra- and interday precisions and accuracy were denoted by assessing measured results of QC samples at low, medium, and high concentrations. Each of the five samples was processed in parallel. Continuously measure a batch of samples and calculate intraday precision. Then, five samples of low, medium, and high plasma samples of each component were prepared in parallel on different consecutive days, and the 45 samples were tested in three batches, and the interday precision was calculated by referring to the accompanying standard. Precisions were expressed by the relative standard deviation (RSD, %), while accuracy (%) was presented as the percentage difference between the mean measured concentrations and the spiked concentrations.

2.7.3. Extraction Recovery and Matrix Effect. Extraction recoveries of the seven analytes from rat blank plasma were determined by comparing the mean peak areas of the QC samples spiked before protein precipitation with those spiked after protein extraction. Matrix effects occurred when endogenous molecules were coeluting with the analytes of interest enhancing or decreasing the ionization efficiency of the electrospray interface. The matrix effect was assessed via comparing the mean peak areas of the QC samples spiked after the pretreatment with those of the pure solution.

2.7.4. Stability. Stability of seven active constituents was checked by comparing measured results with those of freshly prepared samples. The short- and long-term stabilities were evaluated by analyzing QC plasma samples kept at room temperature for 4 h and in the freezer (-20°C) for 30 days, respectively; the freeze-thaw stability was carried out by detecting QC samples undergoing three freeze-thaw cycles; the postpreparation stability was assessed by determining the extracted QC samples stored under autosampler conditions (4°C) for 12 h.

2.8. Determination of HLJDD-Containing Plasma. Specifically pathogen-free Sprague-Dawley rats (male, weighing 200 \pm 20 g) were purchased from Hunan Slac Laboratory Animal Co. LTD (Hunan, China, Certificate No. SCXK-2013-0004) and acclimated in Exhaust Ventilated Closed-System Cage Rack (EVC) for at least a week with environmentally controlled quarters (22 \pm 2°C and 12/12-h light/dark cycle) and

TABLE 1: Optimized precursor/production pairs and multiple reaction monitoring (MRM) parameters for the analytes and IS.

Analyte	m/z	DP/V	CE/eV
Baicalin	447.1→271.0	95	30
Baicalein	271.0→123.0	190	44
Wogonoside	461.1→285.0	90	28
Wogonin	285.0→270.0	130	34
Berberine	337.8→294.0	80	38
Palmitine	353.9→322.1	50	54
Jatrorrhizine	339.1→295.0	100	27
Icariin(IS)	677.3→369.1	200	70
Tetrahydropalmitine(IS)	357.2→192.1	210	35

free access to standard chow and water. Animal welfare and experimental procedures were strictly in accordance with the guide for the care and use of laboratory animal by the Animal Ethics Committee of Jiangxi University of TCM. After one week of acclimatization, the mice were randomly divided into five groups ($n=12$): normal control group, model group, and three dosage groups. The normal control group was fed with common diet, while the other groups were fed with high-fat diet (3% cholesterol, 0.5% sodium cholate, 0.2% propylthiouracil, 5% sugar, 10% lard, and 81.3% basic diet). The high fat-induced AS rat model was established in our previous study [17, 18]. Briefly, the AS model was made by the combination of regular intraperitoneal injection of vitamin D₃ and high fat diet for 8 weeks. The model rat was injected with 600,000 U/Kg vitamin D₃ on the second week and 200,000 U/Kg every other week. The three dosage groups were gavaged HLJDD at doses of 1.5, 3, and 6 g/kg (low, medium, and high) once daily from the 3rd week for 8 weeks until they were sacrificed. Then, the heparinized blood samples were collected from abdominal aorta after 30 minutes of the last administration and frozen at -20°C until analysis.

3. Results

3.1. Method Validation

3.1.1. Specificity. The total separation time for all analytes was 16 minutes and there were little interferential substances with the analytes and IS in the blank plasma. Representative chromatogram of analytes and IS in rat plasma was shown in Figure 2.

3.1.2. Linearity. The calibration curve of each analyte was established with at least six points of standard solution, and each point was repeated five times. The calibration curves of all analytes exhibited good linearity, and the regression equations with correlation coefficients and linear range were listed in Table 2.

3.1.3. Precision and Accuracy. The intraday and interday precision of all analytes were all less than 15%, whilst the accuracy deviation values were all within $96.4\pm 6.0\%$ of the actual values at each QC level (shown in Table 3).

3.1.4. Extraction Recovery and Matrix Effect. The extraction recoveries (absolute recoveries) of each component were more than 80% at each QC level, which satisfied the quantitative requirements of biological samples. With respect to matrix effect, no suppressive or enhancing effect was found on the analytes and IS. That is to say, the responses of all components in the matrix were consistent with that in pure solution. The results are shown in Table 4.

3.1.5. Stability. Results of the stability (shown in Table 5) illustrate that all analytes remained generally stable in plasma for 4 h when stored at room temperature or 30 days when stored at -20°C for three freeze-thaw cycles. And they showed satisfactory stability in the reconstituted solutions when stored under autosampler condition for 12 h.

3.1.6. Application. The present method was successfully used for the determination of three dosages of HLJDD in 24 high fat-induced AS rat plasmas. The concentration of the analytes in plasma after i.g. administration was shown in Table 6 and Figure 3.

4. Discussion

4.1. Optimization of LC-MS for Quantitative Analysis. The choice of mobile phase was a crucial factor in achieving fine chromatographic behavior and appropriate ionization. Modifiers such as formic acid and ammonium formate alone or in combination with different concentrations were compared. The best peak shape and ionization were achieved adapting 5 mM ammonium formate buffer. Linear gradient elution was used to elute endogenous substances residue from the column. In addition, all analytes and IS were both fully scanned by positive and negative mode. As alkaloids were detected overwhelmingly in the positive mode while flavonoids with little difference in both modes, the positive mode was used in the MRM acquisition.

4.2. Selection of the Determined Components. According to the previous phytochemical and HPLC-MS studies, iridoids, alkaloids, and flavonoids were the predominant constituents in HLJDD [19–23]. And many components of HLJDD could

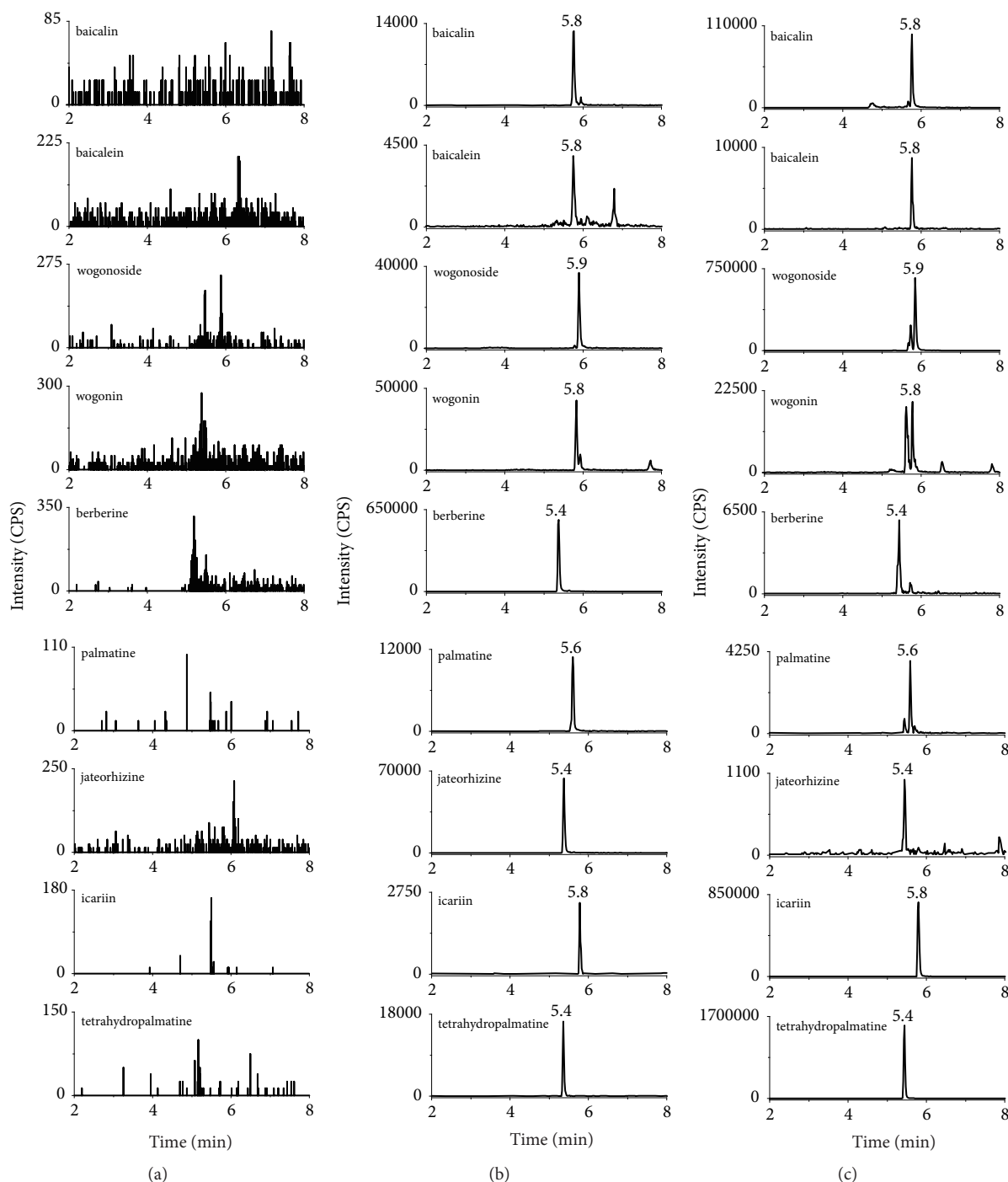


FIGURE 2: The MRM spectrum of each component (a) blank plasma; (b) blank plasma spiked with analytes and IS; (c) rat plasma sample collected after i.g. administration of HLJDD.

alleviate AS development by inhibiting the vascular inflammatory processes, which was the initiation and progression of AS [3, 4]. The flavonoids of *Radix Scutellariae*, i.e., baicalin, baicalein, and wogonin, could suppress vascular inflammation in vitro and in vivo [24], and wogonoside could modulate inflammatory mediator expression in LPS-induced RAW264.7 cells [25]. In addition, wogonin inhibited MMP-9 gene expression (a major role in the pathogenesis of AS)

via MAPK signaling pathways [26]. Berberine, palmatine, and jatrorrhizine, the main alkaloids constituents in *Rhizome Coptidis* and *Cortex Phellodendri*, could suppress the formation and development of AS by altering gut microbiota compositions [27], anti-inflammation, and lowering blood lipids [28–30]. Thus, baicalin, baicalein, wogonoside, wogonin, berberine, palmatine, and jatrorrhizine were determined in high fat-induced AS rats.

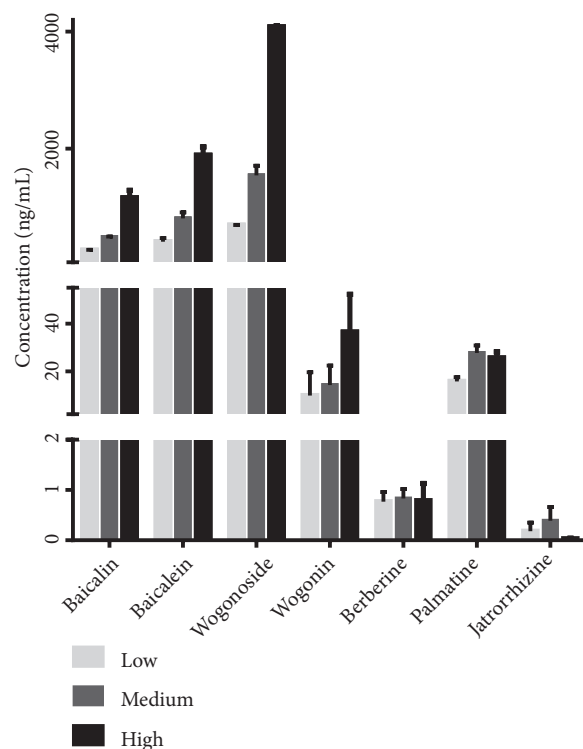


FIGURE 3: The concentration of seven analytes in rat plasma after oral administration of three dosages of HLJDD.

TABLE 2: Regression data and LLOQs of the multi-components determined in HLJDD.

Analyte	Linear range (ng/mL)	Linear regression equations	Correlation coefficient (r)	LLOQs (ng/mL)
Baicalin	2.1-2625	$y = 35.46x + 1561$	0.9995	2.1
Baicalein	2.0-1750	$y = 2.522x + 233.2$	0.9989	2.0
Wogonoside	2.0-1875	$y = 669.6x + 55174$	0.9949	2.0
Wogonin	2.0-136.7	$y = 5885x + 30206$	0.9985	2.0
Berberine	0.25-78.13	$y = 28947x + 29485$	0.9989	0.25
Palmatine	0.25-56.64	$y = 4786x + 1293$	0.9955	0.25
Jatrorrhizine	0.25-25.0	$y = 2877x + 2720$	0.9975	0.25

Although the determination of HLJDD was reported before [31, 32], the active components of it in biological samples have seldom been reported. Deng and He [33, 34] determined baicalin and wogonoside in type 2 diabetic and normal rats. Zeng and Zhu [35, 36] quantified baicalin, geniposide, and berberine in MCAO rats. Nevertheless, they were all based on HPLC method and the LLOQ were μg level for those constituents. Thus, we quantified the above seven ingredients simultaneously in the plasma of high fat-induced AS rats after oral administration of HLJDD except geniposide (for there was almost no geniposide in the drug-containing plasma, and the pretreatment of geniposide was extremely unstable) by UHPLC-MS/MS. In our study, the precision, accuracy, matrix effect, and stability under all conditions are within bioanalytical methodology validation acceptance criteria [37], with the extraction recovery of palmatine and berberine higher than Lu's study [15], the LLOQ was lower,

and the retention time greatly shortened than the previous research [33–36]. Although some peaks eluted with closed retention time, the MS detector can determine them accurately by taking the advantage of its high selective MRM method.

4.3. Concentration Profiles of the Analytes in AS Plasma. From the result of determination of HLJDD-containing plasma, baicalin, baicalein, wogonoside, and wogonin could be highly detected in a dose-dependent manner while berberine, jatrorrhizine, and palmatine were determined in a very low level and in a dose-independent mode. For one thing, the former absorptions were relatively better than the latter. For another, flavonoids are easily bound to glucuronic acid or sulfuric acid to form two-phase metabolism so their plasma concentration-time curves showed obvious bimodal phenomena and concentration increased slowly from the

TABLE 3: Intra-/inter-day precision and accuracy for the determination of the components in rat plasma.

Analytes	Spiked Concentration (ng/mL)	Precision (%)		Accuracy (%; Mean \pm SD)	
		Intra-day	Inter-day	Intra-day	Inter-day
Baicalin	2.1	6.54	2.96	85.12 \pm 5.82	90.10 \pm 9.84
	25.0	5.82	10.87	90.73 \pm 7.80	87.45 \pm 4.95
	2625	10.76	11.71	91.19 \pm 8.37	94.14 \pm 7.30
Baicalein	2.0	6.60	5.41	95.19 \pm 8.95	92.61 \pm 7.28
	25.0	11.72	7.98	96.46 \pm 8.17	98.19 \pm 6.89
	575	6.86	4.24	100.15 \pm 9.36	105.85 \pm 7.94
Wogonoside	2.0	3.45	14.31	87.12 \pm 5.84	102.19 \pm 9.78
	25.0	7.85	7.54	90.73 \pm 7.91	85.96 \pm 5.85
	1875	7.19	0.77	101.14 \pm 5.38	98.89 \pm 7.23
Wogonin	2.0	2.91	5.97	96.45 \pm 5.89	88.77 \pm 4.93
	25.7	4.53	14.11	92.76 \pm 6.89	94.75 \pm 5.73
	136.7	2.06	9.92	95.71 \pm 8.78	90.50 \pm 3.35
Berberine	0.25	3.92	13.28	88.19 \pm 6.59	88.14 \pm 5.05
	2.50	9.48	2.99	99.45 \pm 8.84	85.79 \pm 8.78
	25.0	1.29	12.25	100.89 \pm 8.73	91.16 \pm 4.38
Palmatine	0.25	3.75	10.54	85.12 \pm 5.81	95.19 \pm 8.95
	2.50	7.36	9.66	90.89 \pm 7.93	106.49 \pm 8.19
	25.0	6.28	0.78	108.78 \pm 4.73	110.14 \pm 9.24
Jatrorrhizine	0.25	3.55	13.06	104.12 \pm 7.46	87.02 \pm 6.24
	2.50	7.18	6.57	92.57 \pm 6.65	90.64 \pm 5.93
	25.0	4.38	0.86	98.10 \pm 4.35	96.18 \pm 4.97

TABLE 4: Extraction recovery and matrix effect of the components in rat plasma.

Analyte	Spiked Concentration (ng/mL)	Extraction recovery (%)	Matrix effect (%)
Baicalin	2.1	83.78 \pm 7.53	106.60 \pm 4.96
	25.0	93.53 \pm 9.84	104.82 \pm 9.12
	2625	93.45 \pm 7.15	95.12 \pm 4.89
Baicalein	2.0	82.18 \pm 5.85	96.88 \pm 5.45
	25.0	89.45 \pm 4.56	91.18 \pm 14.56
	575	103.29 \pm 8.59	93.13 \pm 4.89
Wogonoside	2.0	89.78 \pm 6.66	102.51 \pm 11.29
	25.0	89.40 \pm 5.56	103.75 \pm 13.05
	1875	96.75 \pm 12.82	101.02 \pm 11.82
Wogonin	2.0	92.51 \pm 4.12	96.14 \pm 6.85
	25.7	80.52 \pm 9.20	98.16 \pm 10.85
	136.7	89.66 \pm 12.13	99.02 \pm 13.63
Berberine	0.25	95.35 \pm 12.51	91.97 \pm 9.50
	2.50	96.26 \pm 14.99	105.17 \pm 8.57
	25.0	91.89 \pm 12.23	107.46 \pm 5.36
Palmatine	0.25	91.06 \pm 10.29	92.25 \pm 7.42
	2.50	92.17 \pm 6.98	107.22 \pm 11.41
	25.0	89.80 \pm 8.45	87.49 \pm 9.29
Jatrorrhizine	0.25	88.91 \pm 13.32	90.24 \pm 9.03
	2.50	93.33 \pm 12.98	98.79 \pm 8.57
	25.0	87.78 \pm 4.89	110.67 \pm 10.97

TABLE 5: Stability of the components in rat plasma under a variety of storage and process conditions.

Analyte	Spiked Concentration (ng/mL)	RSD%			
		Freeze-thaw cycles (three freeze-thaw cycles)	Short-term stability (room temperature, 4 h)	Long-term stability (-20°C, 30 d)	Auto-sampler stability (4°C, 12 h)
Baicalin	2.1	13.86	10.53	5.63	6.93
	25.0	5.34	4.56	5.91	8.72
	2625	10.64	8.45	1.25	2.16
Baicalein	2.0	8.17	6.48	3.99	12.79
	25.0	7.89	5.78	6.23	7.89
	575	3.73	6.78	5.69	11.36
Wogonoside	2.0	5.54	3.91	2.46	7.88
	25.0	10.35	4.99	14.16	2.52
	1875	11.95	11.56	11.99	8.38
Wogonin	2.0	4.25	8.72	1.96	4.53
	25.7	7.11	12.12	3.79	3.73
	136.7	13.62	10.56	2.88	4.79
Berberine	0.25	12.30	7.63	3.73	7.82
	2.50	11.01	8.43	12.19	10.13
	25.0	14.52	4.96	13.13	7.40
Palmatine	0.25	15.75	8.45	13.83	9.93
	2.50	11.82	8.31	11.98	6.67
	25.0	10.07	4.97	2.54	7.99
Jatrorrhizine	0.25	11.20	7.54	2.86	7.87
	2.50	11.16	6.08	2.11	11.69
	25.0	14.82	9.05	1.31	4.09

TABLE 6: The concentration of seven analytes in rat plasma after oral administration of three dosages of HLJDD.

Analyte	Groups	Concentration (ng/mL)
Baicalin	L	262.95 ± 4.75
	M	489.06 ± 7.29
	H	1159.32 ± 126.39
Baicalein	L	406.48 ± 62.62
	M	804.98 ± 104.02
	H	1885.93 ± 143.94
Wogonoside	L	690.56 ± 4.33
	M	1542.70 ± 165.74
	H	4079.52 ± 21.00
Wogonin	L	9.89 ± 9.76
	M	14.21 ± 8.17
	H	36.50 ± 15.72
Berberine	L	0.77 ± 0.19
	M	0.83 ± 0.19
	H	0.79 ± 0.34
Palmatine	L	15.75 ± 1.82
	M	27.73 ± 3.10
	H	25.64 ± 2.49
Jatrorrhizine	L	0.18 ± 0.17
	M	0.39 ± 0.27
	H	0.03 ± 0.01

5th day [38]. However, even long-term administration of berberine and other alkaloids was not easy to accumulate in vivo for their poor absorption through the gut wall. First of all, berberine had strong rigidity and poor solubility for it is a quaternary ammonium alkaloid with conjugated double bonds. Besides, berberine was the substrate of P-gp, which is an efflux transporter. All these factors lead to the poor absorption of berberine. Secondly, most of them were excluded by the gastrointestinal tract after intragastric administration of berberine and they were also metabolized through various other pathways at the same time [39, 40]. Moreover, the distribution of berberine in the organs was much higher than that in the blood, such as liver, kidney, and muscle [41]. Pharmacokinetic studies [15, 39] indicated the blood clearance of berberine was very fast and its biotransformation in the liver was rapid and substantial. So the first pass elimination of intestinal tract and the tendency distribution of liver could also lead to the low concentration of berberine in blood. Furthermore, our previous studies [42] have shown that baicalin is a partial agonist of berberine, which weakened the pharmacological effect of berberine in a higher concentration range. Therefore, it may contribute to the low blood concentration of berberine in vivo. Likewise, the structures of jatrorrhizine and palmatine are similar to that of berberine, so the low blood concentration of these two alkaloids may also be caused by similar reasons with berberine for the principle of structural similarity.

As we all know, the absorption of the intestinal tract and metabolism of the liver may affect the bioavailability of the drug [43] and the pathological conditions; i.e., AS may also affect the process of the drug in the body. In humans, the development of metabolic diseases including AS has closely related to imbalance intestinal flora [44] and the intestinal flora may also affect the process of drugs in vivo. So the effect of AS on the above constituents cannot be ignored.

5. Conclusions

Quantification of ingredients at a low level was the obstacles in the study of active components of traditional Chinese medicine in biological fluids. Simply using chromatography was usually time-consuming, insensitive, and nonselective enough. In the present study, a highly selective and sensitive UHPLC-ESI-MS method was developed and validated to simultaneously determine the seven active components in rat plasma and successfully applied to 24 high fat-induced AS rats after oral administration of HLJDD. It could apply for further pharmacokinetic study of the analytes and may provide a scientific basis for clinical application of HLJDD.

Data Availability

The data used to support the findings of this study are available from the corresponding author upon request.

Conflicts of Interest

The authors declared no conflicts of interest.

Authors' Contributions

Li Jiang and Yanling Xiong contributed equally to this work.

Acknowledgments

This work was supported by grants of National Natural Science Foundation of China (Nos. 81703823 and 81560744), Jiangxi Provincial Medical and Health Science & Technology Plan (No. 2018B131), Jiangxi Provincial Educational Science & Technology Plan (No. GJJ170753), and Jiangxi Provincial Chinese Medicine First Class Discipline Research Fund (JXSYLXK-ZHYAO120).

References

- [1] L. G. Spagnoli, E. Bonanno, G. Sangiorgi, and A. Mauriello, "Role of inflammation in atherosclerosis," *Journal of Nuclear Medicine*, vol. 48, no. 11, pp. 1800–1815, 2007.
- [2] C. J. Wang, J. T. Liu, F. Guo, Y. Ji, and N. Liu, "Endothelin-1 induces the expression of C-reactive protein in rat vascular smooth muscle cells," *Biochemical & Biophysical Research Communications*, vol. 389, pp. 537–542, 2009.
- [3] R. Ross, "Atherosclerosis—an inflammatory disease," *The New England Journal of Medicine*, vol. 340, no. 2, pp. 115–126, 1999.
- [4] K. M. Qin, H. Guo, Z. S. Xu, Z. Q. Yao, and B. C. Cai, "Research status of chemical constituents and pharmacokinetics of Huanglian jiedu tang," *Anti-Infection Pharm*, vol. 8, pp. 3–7, 2011.
- [5] W. P. Wang, "Effect of basic Therapy combined with Huanglian jiedu decoction on carotid Atherosclerotic plaque and inflammatory factors in patients with Coronary Heart Disease," *Chinese Journal of Integrative Medicine on Cardio/Cerebrovascular*, vol. 15, pp. 3151–3153, 2017.
- [6] W. J. Yang and P. Wang, "Intervention study of Huanglian jiedu decoction on obese patients with type 2 diabetes mellitus," *Shandong Journal of Traditional Chinese Medicine*, vol. 32, pp. 535–537, 2013.
- [7] N. Sekiya, N. Shibahara, I. Sakakibara, N. Hattori, H. Goto, and K. Terasawa, "Inhibitory effects of oren-gedoku-to (Huanglian-Jie-Du-Tang) on free radical-induced lysis of human red blood cells," *Phytotherapy Research*, vol. 17, pp. 147–151, 2003.
- [8] R. X. Fang, Z. X. Liu, and X. H. Zhong, "Analysis of clinical effect, serum cytokines, VEGF and NO in unstable angina pectoris patients treated with Huang-Lian Jie-Du decoction combined with atorvastatin," *Pharmacology and Clinics of Chinese Materia Medica*, vol. 36, pp. 229–232, 2017.
- [9] Q. M. Chu, W. C. Wei, Z. Jin, and W. Wu, "Post-treatment of Huanglian jiedu decoction on myocardial infarction patients with acute ST segment elevation," in *Chinese Archives of Traditional Chinese Medicine*, vol. 36, pp. 823–826, 2018.
- [10] Y. Xu, M. Qin, Y. K. Zhao, and Y. Liu, "The effect of cholesterol lowering and anti-atherosclerosis of hanglian jiedu tang and its components," *Chinese Journal of Experimental Traditional Medical Formulae*, vol. 14, pp. 74–77, 2008.
- [11] J.-M. Brusq, N. Ancellin, P. Grondin et al., "Inhibition of lipid synthesis through activation of AMP kinase: an additional mechanism for the hypolipidemic effects of berberine," *Journal of Lipid Research*, vol. 47, no. 6, pp. 1281–1288, 2006.
- [12] O. S. Kim, C.-S. Seo, Y. Kim, H.-K. Shin, and H. Ha, "Extracts of scutellariae radix inhibit low-density lipoprotein oxidation and the lipopolysaccharide-induced macrophage inflammatory

- response," *Molecular Medicine Reports*, vol. 12, no. 1, pp. 1335–1341, 2015.
- [13] I.-A. Lee, J. H. Lee, N.-I. Baek, and D.-H. Kim, "Antihyperlipidemic effect of crocin isolated from the fructus of *Gardenia jasminoides* and its metabolite crocetin," *Biological & Pharmaceutical Bulletin*, vol. 28, no. 11, pp. 2106–2110, 2005.
- [14] Y. Deng, T. Lu, L. Xie, and X. Liu, "High-performance liquid chromatographic method for the determination and pharmacokinetic study of wogonoside in rat serum after oral administration of traditional Chinese medicinal preparation Huang-Lian-Jie-Du decoction," *Biomedical Chromatography*, vol. 20, no. 10, pp. 1098–1102, 2006.
- [15] T. Lu, Y. Liang, J. Song, L. Xie, G. J. Wang, and X. D. Liu, "Simultaneous determination of berberine and palmatine in rat plasma by HPLC-ESI-MS after oral administration of traditional Chinese medicinal preparation Huang-Lian-Jie-Du decoction and the pharmacokinetic application of the method," *Journal of Pharmaceutical and Biomedical Analysis*, vol. 40, no. 5, pp. 1218–1224, 2006.
- [16] H. Zhu, Z. Qian, H. Li et al., "Integrated pharmacokinetics of major bioactive components in MCAO rats after oral administration of Huang-Lian-Jie-Du-Tang," *Journal of Ethnopharmacology*, vol. 141, no. 1, pp. 158–169, 2012.
- [17] L. B. Yu, Y. Chen, G. L. Xu et al., "Study on mechanism of huang-lian jie-du decoction on atherosclerosis rats based on anti-inflammatory and antioxidant," *Modernization of Traditional Chinese Medicine and Materia Medica-World Science and Technology*, vol. 19, pp. 1841–1845, 2017.
- [18] L. B. Yu, G. L. Xu, R. Yao, J. L. Hu, J. N. Duan, and L. Jiang, "Effect of huanglian jiedu decoction on atherosclerosis rats based on blood gas analysis," *Lishizhen Medicine and Materia Medica Research*, vol. 28, pp. 818–821, 2017.
- [19] S. Wu, A. Sun, and R. Liu, "Separation and purification of baicalin and wogonoside from the Chinese medicinal plant *Scutellaria baicalensis* Georgi by high-speed counter-current chromatography," *Journal of Chromatography A*, vol. 1066, no. 1–2, pp. 243–247, 2005.
- [20] K. Yu, Y. F. Gong, Z. Y. Lin, and Y. Y. Cheng, "Quantitative analysis and chromatographic fingerprinting for the quality evaluation of *Scutellaria baicalensis* Georgi using capillary electrophoresis," *Journal of Pharmaceutical and Biomedical Analysis*, vol. 43, pp. 540–548, 2007.
- [21] J. H. Chen, F. M. Wang, J. Liu, S. C. Lee, X. R. Wang, and H. H. Yang, "Analysis of alkaloids in *Coptis chinensis* Franch by accelerated solvent extraction combined with ultra performance liquid chromatographic analysis with photodiode array and tandem mass spectrometry detections," *Analytica Chimica Acta*, vol. 613, pp. 184–195, 2008.
- [22] S. Pfister, P. Meyer, A. Steck, and H. Pfander, "Isolation and structure elucidation of carotenoid-glycosyl esters in gardenia fruits (*Gardenia jasminoides* Ellis) and saffron (*Crocus sativus* Linne)," *Journal of Agricultural and Food Chemistry*, vol. 44, no. 9, pp. 2612–2615, 1996.
- [23] J. Sun, J. S. Ma, J. Jin et al., "Qualitative and quantitative determination of the main components of huanglianjiedu decoction by HPLC-UV/MS," *Acta Pharmaceutica Sinica B*, vol. 41, pp. 380–384, 2006.
- [24] S.-K. Ku and J.-S. Bae, "Baicalin, baicalein and wogonin inhibits high glucose-induced vascular inflammation in vitro and in vivo," *BMB Reports*, vol. 48, no. 9, pp. 519–524, 2015.
- [25] Y.-Z. Yang, Y.-Z. Tang, and Y.-H. Liu, "Wogonoside displays anti-inflammatory effects through modulating inflammatory mediator expression using RAW264.7 cells," *Journal of Ethnopharmacology*, vol. 148, no. 1, pp. 271–276, 2013.
- [26] S. Lee, Y. Jeong, M. H. Yu et al., "Wogonin suppresses TNF- α -induced MMP-9 expression by blocking the NF- κ B activation via MAPK signaling pathways in human aortic smooth muscle cells," *Biochemical and Biophysical Research Communications*, vol. 351, no. 1, pp. 118–125, 2006.
- [27] Y. Shi, J. Hu, J. Geng et al., "Berberine treatment reduces atherosclerosis by mediating gut microbiota in apoE-/- mice," *Biomedicine & Pharmacotherapy*, vol. 107, pp. 1556–1563, 2018.
- [28] N. Ning, K. He, Y. Wang et al., "Hypolipidemic effect and mechanism of palmatine from *Coptis chinensis* in hamsters fed high-fat diet," *Phytotherapy Research*, vol. 29, pp. 668–673, 2015.
- [29] B. Yan, D. Wang, S. Dong et al., "Palmatine inhibits TRIF-dependent NF- κ B pathway against inflammation induced by LPS in goat endometrial epithelial cells," *International Immunopharmacology*, vol. 45, pp. 194–200, 2017.
- [30] M. Feng, *Study on the Role and Mechanisms of Alkaloids of Rhizoma Coptidis and Its Derivative on Atherosclerosis*, Southwest University, 2017.
- [31] Y. Yang, H. J. Wang, J. Yang et al., "Chemical profiling and quantification of Chinese medicinal formula Huang-Lian-Jie-Du decoction, a systematic quality control strategy using ultra high performance liquid chromatography combined with hybrid quadrupole-orbitrap and triple quadrupole mass spectrometers," *Journal of Chromatography A*, vol. 1321, pp. 88–99, 2013.
- [32] K.-Y. Kwok, J. Xu, H.-M. Ho et al., "Quality evaluation of commercial Huang-Lian-Jie-Du-Tang based on simultaneous determination of fourteen major chemical constituents using high performance liquid chromatography," *Journal of Pharmaceutical and Biomedical Analysis*, vol. 85, pp. 239–244, 2013.
- [33] Y. X. Deng, T. Lu, L. Xie, and X. D. Liu, "High-performance liquid chromatographic method for the determination and pharmacokinetic study of wogonoside in rat serum after oral administration of traditional Chinese medicinal preparation Huang-Lian-Jie-Du decoction," *Biomed Chromatogr*, vol. 20, pp. 1098–1102, 2006.
- [34] M.-Y. He, Y.-X. Deng, Q.-Z. Shi, X.-J. Zhang, and Y. Lv, "Comparative pharmacokinetic investigation on baicalin and wogonoside in type 2 diabetic and normal rats after oral administration of traditional Chinese medicine Huanglian Jiedu decoction," *Journal of Ethnopharmacology*, vol. 155, no. 1, pp. 334–342, 2014.
- [35] M.-F. Zeng, L.-M. Pan, H.-X. Zhu, Q.-C. Zhang, and L.-W. Guo, "Comparative pharmacokinetics of baicalin in plasma after oral administration of Huang-Lian-Jie-Du-Tang or pure baicalin in MCAO and sham-operated rats," *Fitoterapia*, vol. 81, no. 6, pp. 490–496, 2010.
- [36] H. Zhu, Z. Qian, F. He et al., "Novel pharmacokinetic studies of the Chinese formula Huang-Lian-Jie-Du-Tang in MCAO rats," *Phytomedicine*, vol. 20, no. 10, pp. 767–774, 2013.
- [37] The State Pharmacopoeia Commission of P.R. China, "Methodology validation guidelines for quantitative analysis of biological samples," in *Pharmacopoeia of the People's Republic of China*, vol. IV, pp. 363–368, Chin Med Sci Press, Beijing, China, 2015 edition, 2015.
- [38] X. R. Gu, S. Y. Fang, W. Ren et al., "Pharmacodynamics of Huanglian Jiedu decoction in Alzheimer's disease (AD) model rats and effect on improvement of inflammation microenvironment

- in brain," *China Journal of Chinese Materia Medica*, vol. 43, pp. 3006–3011, 2018.
- [39] F. Zuo, N. Nakamura, T. Akao, and M. Hattori, "Pharmacokinetics of berberine and its main metabolites in conventional and pseudo germ-free rats determined by liquid chromatography/ion trap mass spectrometry," *Drug Metabolism & Disposition*, vol. 34, Article ID 011361, pp. 2064–2072, 2006.
- [40] S. Yu, X. Pang, Y. Deng et al., "A sensitive and specific liquid chromatography mass spectrometry method for simultaneous determination of berberine, palmatine, coptisine, epiberberine and jatrorrhizine from *Coptidis Rhizoma* in rat plasma," *International Journal of Mass Spectrometry*, vol. 268, no. 1, pp. 30–37, 2007.
- [41] X. Tan, J. Ma, R. Feng et al., "Tissue distribution of berberine and its metabolites after oral administration in rats," *PLoS ONE*, vol. 8, no. 10, p. e77969, 2013.
- [42] C. Zhang, R. Yu, Y. Liu et al., "Interaction of baicalin with berberine for glucose uptake in 3T3-L1 adipocytes and HepG2 hepatocytes," *Journal of Ethnopharmacology*, vol. 151, no. 2, pp. 864–872, 2014.
- [43] L. Jiang, J. D. Dai, Z. L. Huang, Q. H. Du, J. H. Lin, and Y. R. Wang, "Simultaneous determination of gastrodin and puerarin in rat plasma by HPLC and the application to their interaction on pharmacokinetics," *Journal of Chromatography B*, vol. 915–916, pp. 8–12, 2013.
- [44] D. A. Chistiakov, Y. V. Bobryshev, E. Kozarov, I. A. Sobenin, and A. N. Orekhov, "Role of gut microbiota in the modulation of atherosclerosis-associated immune response," *Frontiers in Microbiology*, vol. 6, p. 671, 2015.