

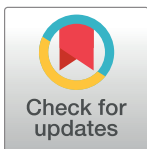
## RESEARCH ARTICLE

# Trait-based plant ecology a flawed tool in climate studies? The leaf traits of wild olive that pattern with climate are not those routinely measured

Jalal Kassout<sup>1,2,3</sup>, Jean-Frederic Terral<sup>2,3</sup>, John G. Hodgson<sup>4,5</sup>, Mohammed Ater<sup>1,2\*</sup>

**1** Equipe bio-Agrodiversité, Laboratoire Botanique Appliquée, Faculté des Sciences, Université Abdelmalek Essaâdi, Tétouan, Morocco, **2** Associated International Laboratory EVOLEA, INEE-CNRS- CNRST, Montpellier, France, **3** Institut des Sciences de l'Evolution, CNRS, IRD, EPHE, Equipe Dynamique de la Biodiversité, Anthro-Ecologie, Université de Montpellier, Montpellier, France, **4** Unit of Comparative Plant Ecology, University of Sheffield, Sheffield, United Kingdom, **5** School of Archaeology, University of Oxford, Oxford, United Kingdom

\* [mohammed.ater@gmail.com](mailto:mohammed.ater@gmail.com)



## OPEN ACCESS

**Citation:** Kassout J, Terral J-F, Hodgson JG, Ater M (2019) Trait-based plant ecology a flawed tool in climate studies? The leaf traits of wild olive that pattern with climate are not those routinely measured. PLoS ONE 14(7): e0219908. <https://doi.org/10.1371/journal.pone.0219908>

**Editor:** Khawaja Shafique Ahmad, University of Poonch Rawalakot, PAKISTAN

**Received:** March 8, 2019

**Accepted:** July 4, 2019

**Published:** July 17, 2019

**Copyright:** © 2019 Kassout et al. This is an open access article distributed under the terms of the [Creative Commons Attribution License](https://creativecommons.org/licenses/by/4.0/), which permits unrestricted use, distribution, and reproduction in any medium, provided the original author and source are credited.

**Data Availability Statement:** All relevant data are within the manuscript and its Supporting Information files.

**Funding:** This research was supported by EcoGenOlea (2015-2017), Toubkal grants (15/04, n°32525WH) and the Moroccan Excellency research grants (024UAE2014).

**Competing interests:** The authors have declared that no competing interests exist.

## Abstract

Climate-related studies have generally focussed upon physiologically well-defined ‘mechanistic’ traits rather than ‘functional’ ones relating indirectly to resource capture. Nevertheless, field responses to climate are likely to typically include both ‘mechanistic’ specialization to climatic extremes and ‘functional’ strategies that optimize resource acquisition during less climatically-severe periods. Here, this hypothesis was tested. Seventeen traits (six ‘functional’, six ‘mechanistic’ and five ‘intermediate’) were measured from 19 populations of oleaster (wild olive) along a climatic gradient in Morocco. Principal components analysis of the trait dataset identified size and the ‘worldwide leaf economics spectrum’ as PCA axes 1 and 2. However, contrary to our prediction, these axes, and commonly-measured ‘functional’ traits, were little correlated with climate. Instead, PCA 3, perhaps relating to water-use and succulence, together stomatal density, specific leaf water content and leaf shape, patterned with altitude, aridity, rainfall and temperature. We concluded that, at least for slow-growing species, such as oleaster, ‘mechanistic’ traits are key to identifying mechanisms of climatic restriction. Meaningful collaboration between ‘mechanistic’ and ‘functional’ disciplines provides the best way of improving our understanding of the global impacts of climate change on species distribution and performance.

## Introduction

There is a long tradition of studying characteristics of the plant phenotype (traits) that determine how plants respond to environmental factors [1,2]. The measurement of functional (adaptive) traits along environmental gradients has led to the identification of recurrent syndromes of co-occurring plant functional traits or ‘plant functional types’ particularly in

relation to resource capture and allocation. These ‘plant functional types’, are a consequence of trade-offs, where traits that facilitate the exploitation of one environment simultaneously reduce fitness in another and, for many, their functional significance is underpinned by ecological theory. In this context, arguably the most fundamental and over-arching set of ecological rules relating plant performance to the environment is provided by CSR strategy theory [3,4]. CSR strategy theory defines two groups of environmental factors that vitally impact upon plant performance. The first, stress (S), includes factors that restrict plant production, particularly mineral nutrients. Other stress factors include suboptimal temperatures and a shortage of light or water. The second group, disturbance (R), results in the destruction of already-produced plant biomass, promoting ruderal growth. Disturbance may result both from the impacts of land use and from extreme climatic events. Where, stress and disturbance are both low, the distribution of species is determined by a third factor, between-plant competition (C). Nevertheless, to date, the use of functional traits has concentrated upon just two areas within strategy theory. The first is the ‘worldwide leaf economics spectrum’, a major factor within stress sensu Grime [3]. This separates species of fertile habitats from those of unproductive ones [5,6]. It is defined both within the classical definition of relative growth rate by Evans [7] and by a fundamental trade-off in leaves between the rapid acquisition of nutrients and the conservation of resources within well-protected tissues [8–11]. The second much-studied topic within strategy theory is plant size. The expression of size is a complex function of the qualitative and temporal opportunities for growth controlled by environmental factors and by interactions with other plants (i.e. combinations of competition, disturbance and stress; Grime [1]). As a consequence of this choice of traits, global meta-analysis within mainstream trait-based plant ecology [12,13] simply identify the ‘worldwide leaf economics spectrum’ and plant size as the two key axes of specialization. Nevertheless, studies of this type, often called ‘trait-based plant ecology’, have been advanced as a key discipline for understanding and advising upon global processes of ecosystem change [6]. A great strength of trait-based plant ecology is that the attributes routinely targeted can be both of ecological significance and easily measured. Numerous species, or even whole floras can be easily categorized with respect to many contrasted ecological dimensions. Moreover, the approach has already been used to compile large and varied trait databases [14]. Encouragingly for the future, many additional traits are available for study [2] and their use may further broaden the scope and utility of trait-based plant ecology.

### **Intraspecific variation in trait expression—small changes with large impacts?**

To date trait-based plant ecology has primarily focused upon interspecific comparisons [5,15]. In contrast, intraspecific traits, while often equally ecologically significant, have remained comparatively neglected [16–19]. This is unfortunate. As in interspecific comparisons, intraspecific traits frequently pattern instructively along environmental gradients [20,21]. Moreover, intraspecific differences may equal or even exceed those from interspecific studies [22,23]. They are also potentially relevant to climate studies (e.g. tolerance of water stress [24]) as well as, to more general investigations of species coexistence and distribution [25]. These similarities with studies of interspecific traits do not, however, by themselves make a strong case for more intraspecific investigations. However, additionally, and importantly, not all species have the same ecological impact. Amongst, those of greatest ecological significance are canopy dominants, sometimes called ‘ecosystem engineers’ [26,27]. These species monopolize primary resources and, as a result, have a major impact on the ecological functioning of the whole community [26,27]. In order to accommodate these and similar species, we, like Fajardo

and Piper [21], Bolnick et al. [17], Albert et al. [28], Laforest-Lapointe et al. [29], Moran et al. [30], Shipley et al. [31], believe that change is needed. An intraspecific dimension should be routinely factored into global models.

### Studying climate—a methodological dilemma

Despite its long-appreciated importance [32], our capacity to predict the potential impacts of climate change upon the world's flora remains constrained by problems of ecological complexity [33–35]. Moreover, within the context of climate studies the 'functional trait' approach described above has so far failed to identify and quantify mechanisms of climatic restriction. The most highly-cited paper [36] simply asks the important but preliminary question 'Which is the better predictor of plant traits, temperature or precipitation?' More recently, global correlations between traits and climatic variables have also been used to predict possible impacts of climate change on biomass yield [37]. In contrast, an alternative overtly ecophysiological approach has greatly increased our understanding of the impacts of climate on plant performance and survival. Through experimentation, syndromes of 'mechanistic' traits conferring tolerance of defined climatic factors have been identified with their function directly interpreted in terms of physics and chemistry. For example, thermal response time of the leaf to changes in surface energy fluxes has been recognized as a major component of physiological tolerance to drought [38,39]. Thermal response time is critical to leaf carbon economics and is defined by leaf traits such as dry matter mass, water mass, specific heat capacity, surface area, width, shape and stomatal density [39]. Similarly, the characteristics of the plant's hydraulic system additionally regulate response to climate [40,41]. Here, key traits include leaf water potential at turgor-loss point, plant hydraulic conductance or xylem vulnerability [42–44] and, more generally, root architecture [45,46]. Furthermore, encouragingly, Brodribb [47] outlines how simple 'mechanistic' traits identified in ecophysiological studies define hydraulic physiology and may be used to explain and predict climatic restriction due to drought.

The contrast between the relatively climatically ineffectual 'functional' traits and the more ecophysiological insightful 'mechanistic' traits has catalysed a debate as to how best to advance our understanding of plant-climate interactions [47]. Provocatively, Brodribb writes: 'By 'mechanistic' traits, I mean traits whose function can be clearly physiologically defined, as opposed to the more abstract 'functional' traits, such as leaf mass per area (LMA, also known as specific leaf area (SLA)), that have been used to great effect in explaining plant economics over the last 15 years [5]'. Brodribb's subdivision has been re-enforced by Voltaire [48]. Voltaire separates 'mechanistic' traits as physiological strategies relating to one dominant environmental factor and studied explicitly over short timescales from 'functional' traits with ecological strategies relating to multi- environmental factors and studied implicitly over long timescales. However, this debate ignores a key point. 'Mechanistic' studies are time-consuming and most include few species. They provide precision in measurement but the general significance of each mechanism at a global scale is more difficult to study because inevitably datasets are small. In contrast, as outlined above, the 'functional trait' approach can quickly generate large datasets for whole floras with each species defined in many contrasted ecological dimensions. As in other comparative approaches the 'functional trait' approach has a strong potential for generality. 'The collection and comparison of standardized information . . . . follows closely the philosophies prevailing in the physical sciences. Perhaps the most obvious of these is the role played by the Periodic Table of the Elements in classifying, analysing, and even predicting, the structure and properties of chemical elements and compounds' [49]. Why has the 'functional trait' approach had so little impact on understanding the role of climate on plant distribution? The failure appears to stem from the consistent use of a restricted and 'climatically

inappropriate' set of traits. Traits linked to 'mechanistic' climate-related studies are conspicuously absent from 'functional' analyses both in studies describing general global patterns of specialization [12,13] and in those with a more climatic focus [36,37]. A plethora of potentially important climate-related traits still require further investigation. With interdisciplinary collaboration, the 'functional trait' approach has the potential to add important elements of generality and utility to the current pioneering 'mechanistic' studies . . . provided, of course, that suitable, easily- and rapidly-measurable traits can be borrowed from the existing raft of 'mechanistic' studies.

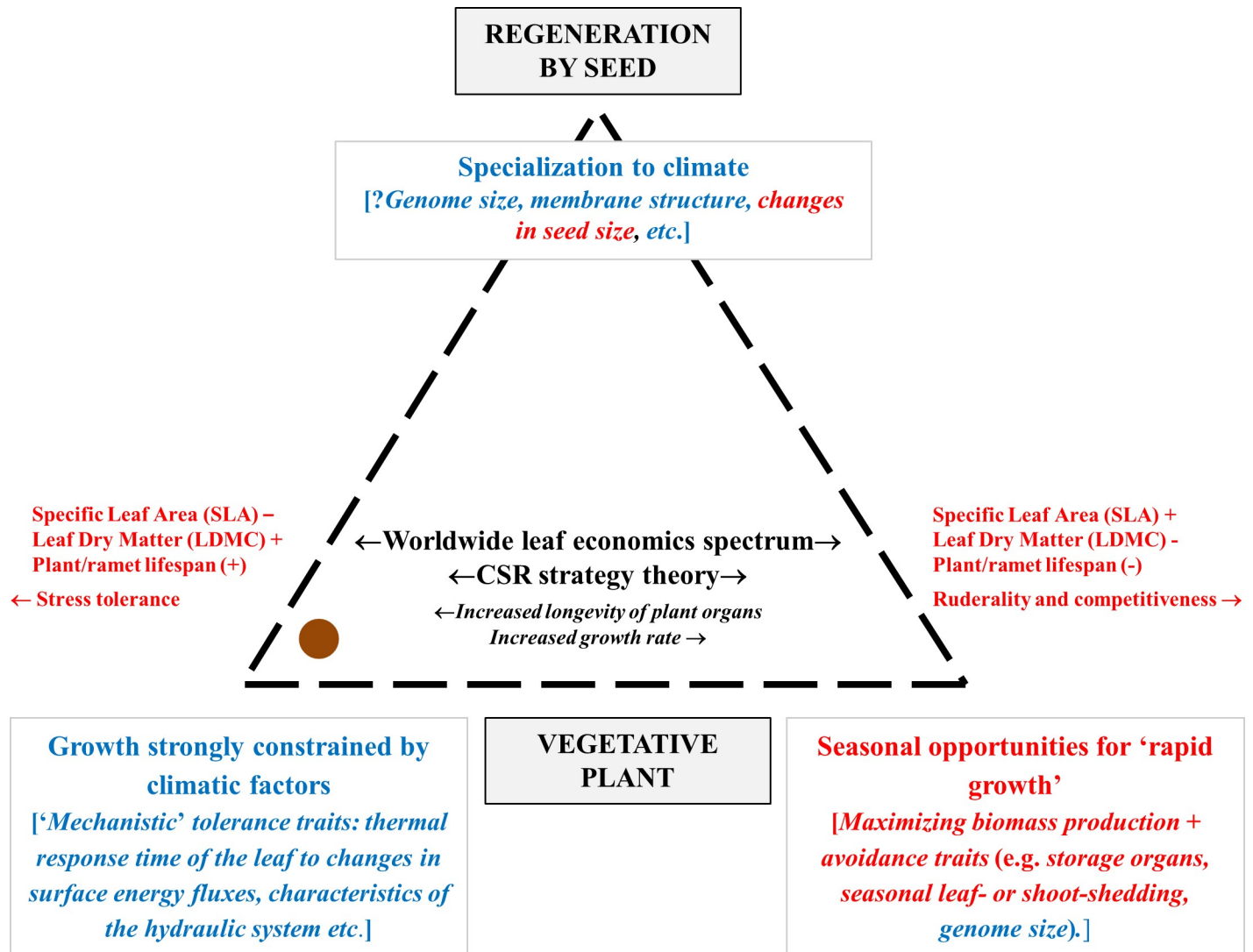
## Objectives

Our trait-based study will focus upon climate and, in particular, oleaster, or wild olive, growing along a climatic gradient in Mediterranean Morocco. Both species and region are of climatic relevance and interest. Climate change is predicted to increase the geographical range of the olive [50]. Equally, the Mediterranean region is both a biodiversity hotspot [51] and under severe threat from climate change [52,53]. Specifically, variation in trait expression will be explored between and within nineteen populations of oleaster from climatically-contrasted habitats. The traits to be measured fall into two groups. The first group comprises 'functional traits', attributes that identify the 'worldwide leaf economics spectrum' and plant size. These traits are essentially those routinely measured in 'functional' studies. The second group includes 'mechanistic' traits linked to climate by physiological studies but not currently used in most 'functional trait' studies. Of necessity, we will concentrate attention on 'mechanistic' traits that may be measured rapidly. We shall assess both individually and in combination, which traits pattern more exactly with climatic variables, (a) 'functional' or (b) 'ecophysiological' traits. In this context, we suggest that field responses to climate has two components (Fig 1). First, 'functional' strategies relating to the 'leaf economics spectrum' may be expected to optimize resource acquisition and growth during less climatically-severe periods. Secondly, 'mechanistic' strategies involving 'ecophysiological traits' linked to climate by physiological studies will confer tolerance of climatic extremes. Since oleaster is both slow-growing and long-lived tree, survival of climatic extremes will be key. Accordingly, our specific hypothesis is that, for oleaster, 'ecophysiological traits' little-used in trait-based plant ecology will pattern with climatic variables more effectively than commonly-used 'functional traits'. More generally, we suspect that 'functional' trait-based plant ecology will have little impact on climate change research until it routinely includes a 'mechanistic' dimension to its trait measurements and analyses.

## Materials and methods

### Study species

Oleaster (*Olea europaea* subsp. *europaea* var. *sylvestris* (Miller) Lehr) is the wild progenitor of the Mediterranean cultivated olive (*Olea europaea* L. subsp. *europaea* var. *europaea*) (Besnard et al. [54] for review). It is an evergreen, sclerophyllous, long-lived wind-pollinated tree [55–59]. Oleaster is a characteristic component of the natural Mediterranean vegetation [60,61] and its presence may be traced back to at least the last glaciation period [61–63]. It is considered a bio-indicator of the Mediterranean climate [61,64–67] and arguably the most emblematic and iconic tree of the Mediterranean Basin [54]. In Morocco climax vegetation with oleaster extends over several Mediterranean bioclimates from humid to arid along a north-south latitudinal gradient and oleaster appears eliminated mainly by the cold (maximum altitude between 1000 and 1600 m) and extreme aridity [55]. Because of its importance, (a) in climate studies, as a bio-indicator, and (b) in studies of ecosystem function, as a major



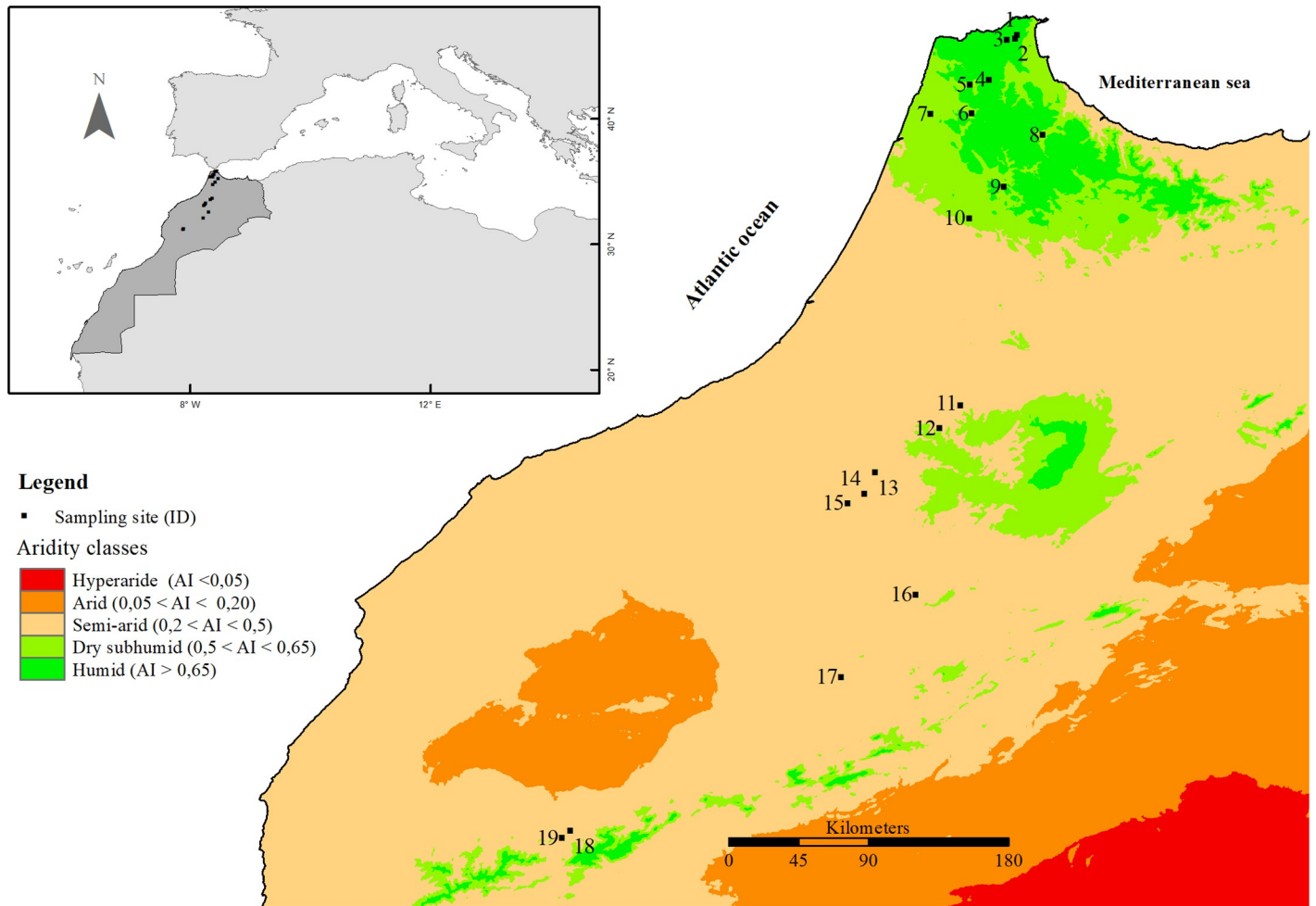
**Fig 1. Predicted broad trends between plant traits and response to climate.** ‘Mechanistic’, relating particularly to specializations for surviving harsh climates, and ‘functional’ traits sensu Broderibb [47], that may optimize growth during other periods, are coloured blue and red respectively. • identifies the putative position of *Olea* designated with an orange color.

<https://doi.org/10.1371/journal.pone.0219908.g001>

component of the vegetation, oleaster is an ideal species for studying traits along a climatic gradient.

### Study areas

The field context was provided by a 600 km latitudinal transect of Morocco that includes a wide range of habitats and vegetation types across three bioclimatic zones (humid, subhumid and semi-arid) within Morocco (Fig 2) [68–73]. We chose nineteen representative woodland and scrub sites each with contrasted climatic, geographical and phytoecological characteristics (Table 1). The climate of each site was defined using five variables: mean annual temperature (MAT, °C), minimum temperature of the coldest month (MTCM, °C), and the mean annual precipitation (MAP, mm), all extracted from the Worldclim database, at a resolution of 30 arc’s (~1 km<sup>2</sup>) [74] plus the mean annual evapotranspiration (PET, mm/year) and the global



**Fig 2. The geographical locations of sampling sites across Morocco with contours for Aridity index generated with Open Quantum GIS V. 2.12.3-Lyon software [79]. Site numbers accord with Table 1.**

<https://doi.org/10.1371/journal.pone.0219908.g002>

aridity index (AI, unitless, calculated as MAP/PET) from, respectively, the PET database and the CGIAR Global Aridity database [75,76]. The range of climate associated with our sites (Table 1) is greater than changes to climatic variables predicted by Gibelin and Déqué [77] and Polade et al. [78] making our study area more relevant to climate change research.

### Field sampling

Sampling in the field requires no authorization; the study sites are located in natural public areas outside protected natural areas. The species studied (*Olea europaea* subsp. *europaea sylvestris* (Miller) Lehr) is not a rare or protected species.

At each site, ten healthy oleaster trees were randomly selected from within of a 200m<sup>2</sup> area during the spring (April to May) of 2016. The diameter at breast height (DBH) and the vegetative height (H) of each tree were recorded as proscribed by Bonham [81]. Subsequently, relative chlorophyll content (CHL, SPAD units) was measured using a SPAD 502 plus chlorophyll meter and following the protocols of Cornelissen et al. [82], thirty healthy, mature leaves were collected at random from the south (sun-exposed) side of the upper canopy and returned to the laboratory on the day of sampling in a cool, hydrated condition.

**Table 1. Climatic, geographic and phytoecological characteristics of sites sampled.**

Site names	Latitude (°)	Longitude (°)	Altitude (m)	MAT (°C)	MTCM (°C)	MAP (mm/year)	AI	Vegetation series (types)	Phytoecological associations
<b>(A) Humid climate</b>									
1. Tlat Taghramt Med	-5.458	35.807	364	16.5	5.8	808	0.72	Kermes oak Thermo-mediterranean serie	<i>Rusco hypophyllii-Quercetum cocciferae</i> [69]
2. Tlat Taghramt	-5.468	35.789	293	16.9	6.3	801	0.71		
3. Ksar Sghir	-5.515	35.783	255	17.5	7.1	802	0.71		
<b>(B) Dry subhumid climate</b>									
4. Bni Harchin	-5.620	35.551	150	18.0	7.3	779	0.65	Oleaster and carob Thermo-mediterranean serie	<i>Tamo communis-Oleetum sylvestris</i> [69]
5. Dar Chaoui	-5.730	35.521	64	18.1	7.7	751	0.63		
6. Bni Arous	-5.718	35.357	90	18.1	6.5	781	0.62		
7. Tnin Sidi Yamani	-5.958	35.353	126	17.7	6.1	765	0.61		
8. Dar Akoubaa	-5.310	35.231	322	17.7	5.6	774	0.61		
9. Ouezzene	-5.533	34.930	137	18.7	5.9	814	0.60		
10. Mesmouda	-5.734	34.750	196	18.0	5.0	805	0.59		
<b>(C) Semi-arid climate</b>									
11. Ras Ejery	-5.785	33.667	589	16.3	2.8	621	0.44	Barbary thuya mesophil serie	<i>Coronilla viminalis-Tetraclinetum articulatae</i> [73]
12. Bouqachmir	-5.906	33.536	582	16.8	3.2	582	0.40		
13. Moulay Bouazza	-6.436	33.102	680	17.3	2.8	482	0.31	Holm oak Thermo-mediterranean serie	<i>Smilaci mauritanicae-Quercetum rotundifoliae</i> [73]
14. Sebt Ait-Rahou	-6.280	33.280	745	16.6	2.2	545	0.31	Barbary thuya mesophil serie	<i>Coronilla viminalis-Tetraclinetum articulatae</i> [73]
15. Oulad Aissa	-6.341	33.158	523	18.1	4.0	472	0.37		
16. El Ksiba	-6.044	32.575	900	16.6	1.4	721	0.46	Phoenician juniper and barbary thuya serie	<i>Quercu rotundifoliae-Tetraclinetum articulatae</i> [80]
17. Bin Ouidane	-6.475	32.098	946	17.1	1.8	514	0.32		<i>Polygalo balansae- Tetraclinetum articulatae</i> [73]
18. Asni	-8.041	31.208	953	15.6	0.2	420	0.28		<i>Lavandulo dentatae-Tetraclinetum articulatae</i> [80]
19. Ouirgane	-8.092	31.167	919	16.5	1.1	377	0.26		

Climatic variables, abstracted from Worldclim database [74] and the CGIAR Global Aridity and PET database [76], are abbreviated as follows: MAT (°C), mean annual temperature; MTCM (°C), mean temperature of the coldest month; MAP (mm), mean annual precipitation; AI: aridity index, calculated as MAP/PET (PET, potential evapotranspiration) with low values indicate more arid habitat. Vegetation type relates to Benabid and Fennane [71] and phytoecological association to Barbéro et al. [73], Benabid [69] and Fennane [80].

<https://doi.org/10.1371/journal.pone.0219908.t001>

### Leaf traits

Seventeen plant traits were measured (Table 2). Six were ‘functional’ traits, relating to size or to the ‘leaf economics spectrum’, of the type more traditionally used in trait-based ecological studies. We are trialing a further six ‘mechanistic’ traits identified from the physiological literature as of possible relevance in climate studies. Additionally, five ‘intermediate’ traits were included. These were potentially relevant to both resource capture and to climate. Traits were further categorized into four inexact groupings relating to what was being measured: (1) ‘ecophysiological’, both function and measurement relating to one component of leaf form and function (e.g. stomatal density (DS)); (2) ‘morphological size and shape’, both function and measurement relating to the whole leaf (e.g. leaf area (LA)), (3) ‘structural allocation’, function estimated from interacting properties of the whole leaf (e.g. specific leaf area (SLA)) and (4) whole plant (e.g. plant height, m; H). Group 1 is analogous to ‘mechanistic’ in so far as

**Table 2. Leaf traits studied inexactly grouped according to putative function and reasons for their use.**

Trait grouping	Traits	Abbr.	Unit	Putative functional role	References
Ecophysiological (within leaf)	Relative chlorophyll content <sup>m</sup>	CHL	SPAD unit	Photosynthetic rate and leaf life span	[88]
	Stomatal density <sup>m</sup>	DS	no. of stomata abaxial surface mm <sup>-2</sup>	Stomatal conductance and water balance	[89] [90] [91] [92]
	Leaf water content <sup>m</sup>	LWC	g	Water balance	
	Specific leaf water content <sup>m</sup>	SLWC	g H <sub>2</sub> O cm <sup>-2</sup>	Water balance	[85]
	Leaf thickness <sup>f,m</sup>	LT	mm	Resource acquisition and water balance	[93] [94] [95] [96]
Morphological size and shape (whole leaf)	Leaf area <sup>f,m</sup>	LA	cm <sup>2</sup>	Resource capture, growth rate and water balance	[93][97] [98] [99] [12] [13]
	Length <sup>f,m</sup>	LL	cm	Light capture, resource capture and growth rate	[93] [100] [101] [99] [87]
	Width <sup>f,m</sup>	LW	cm		
	Length at maximum width <sup>f,m</sup>	LL <sub>max</sub>	cm		
	Length:width ratio <sup>m</sup>	LL/LW		Light capture and thermoregulation	[86] [87]
Length:LPL ratio <sup>m</sup>	LL/LL <sub>max</sub>		Light capture and thermoregulation		
Structural allocation (whole leaf)	Leaf fresh mass <sup>f</sup>	LWM	g	Resource acquisition	[102] [103]
	Leaf dry mass <sup>f</sup>	LDM	g	Resource acquisition	
	Specific leaf area <sup>f</sup>	SLA	cm <sup>2</sup> g <sup>-1</sup>	Resource capture, water balance and growth rate	[102] [104] [105] [9] [106]
	Leaf dry matter content <sup>f</sup>	LDMC	mg g <sup>-1</sup>	Physical resistance, stress tolerance and growth rate	[107] [5] [103] [82]
Plant size (whole plant)	Plant height <sup>f</sup>	H	m	Light capture, competition rate, stress tolerance and growth rate	[107] [5] [108]
	Diameter at breast height <sup>f</sup>	DBH	cm	Resource capture, stress tolerance and growth rate	[109]

<sup>m</sup> denotes ‘mechanistic’ traits, whose relevance has been identified directly from physiological studies, and <sup>f</sup> ‘functional’ traits relating to size or to the ‘leaf economics spectrum’. Traits that span both groupings are designated as <sup>f,m</sup>.

<https://doi.org/10.1371/journal.pone.0219908.t002>

there is a relatively precise and direct connection between how the trait functions and what was measured. Also groups 3–4 equate to ‘functional’ traits and group 2 may be viewed as intermediate, with impacts upon both growth and water use efficiency. As a matter of policy, we have opted to concentrate on traits that may be measured quickly and easily. Such traits may be more readily incorporated into trait-based ecological studies.

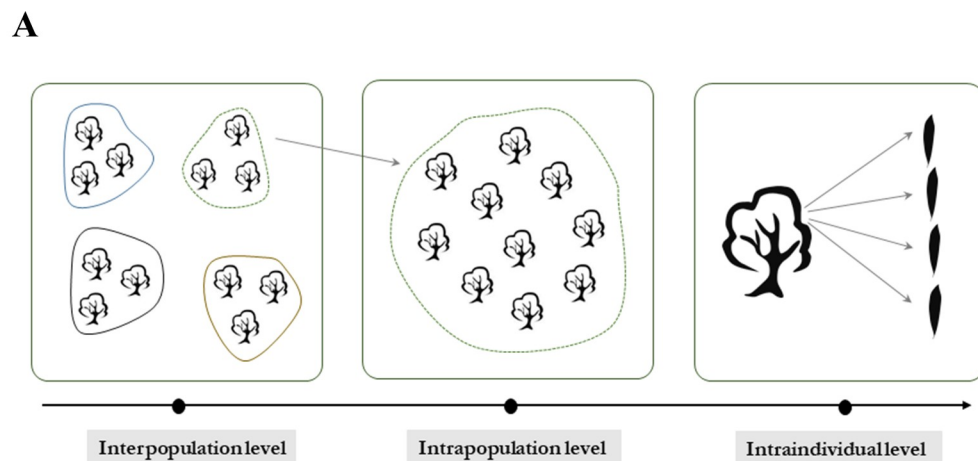
For each leaf trait there were 30 replicate leaves tree<sup>-1</sup> x 10 trees site<sup>-1</sup> x 19 sites, making a total of 5700 replicate leaves. Trichomes were removed from the abaxial leaf surface of *Olea*, a hypostomatous species and impressions made using clear nail polish [83,84]. Subsequently, stomatal density (DS, no. of stomata mm<sup>-2</sup>) was measured from four separate areas of the abaxial surface of the leaf at 400x magnification (Olympus BX43). Additional laboratory- measured traits were—*group 1*: leaf water content (LWC, g; LWM–LDM), specific leaf water content (SLWC, g cm<sup>-2</sup>; (LWM–LDM)/LA) [85]), leaf thickness (LT, mm, using a precision micrometer (Mitutoyo, 0,01–25mm)); *group 2*: leaf area (LA, cm<sup>2</sup>), length (LL, cm), width (LW, cm), length of the broadest leaf (LL<sub>max</sub>, cm), two estimates of leaf shape length:width ratio (LL/LW) and length: longest length ratio (LL/LL<sub>max</sub>), [86,87]; *group 3*: leaf fresh mass (LWM, mg), leaf dry mass (LDM, mg), specific leaf area (SLA, cm<sup>2</sup> g<sup>-1</sup>; LA/LDM); leaf dry matter content (LDMC mg g<sup>-1</sup>, LDM/LWM). In addition, the functional syndrome, CSR-strategy, was calculated from leaf traits by the method of Pierce et al. [4].



### Data analysis

After checking frequency distributions for normality and variance heterogeneity, it was necessary to log-transform trait values prior to analysis. Subsequently, one-way ANOVA with Tukey HSD *post hoc* tests, Pearson correlations and principal component analyses (PCA) were undertaken for inter-population comparisons of trait values and of coefficient of variation (CV) estimates using the open source statistical environment R 3.3.3 [110].

Intraspecific variation of the 5700 replicates for each leaf trait was explored across three levels of spatial and organizational scales: 1) ‘regional’, between different sites; 2) ‘population’, between different trees at same site, and 3) ‘individual’, between leaves on the same tree (Fig 3). Here, the coefficient of variation (CV), calculated by the formula  $CV (\%) = \frac{\text{standard deviation}_{\text{trait}}}{\text{mean}_{\text{trait}}} \times 100$  [111], evaluates the amplitude of trait variability [112,113]. This is particularly true where there is a proportionality between the mean and standard deviation of the distribution [114]. The ‘varcomp’ function in the ‘ape’ package extracted these variance components [115] and to quantify the extent and importance of variance across regional,



### B

Variance in functional trait expression			Interpretation	
Inter-population	Intra-population	Intra- individual	Interpretation	Potential ecological significance
++	--	--	Potentially significant phenotypic or genetic differences between sites	An important determinant of geographical distribution
--	++	--	Phenotypic plasticity (habitat heterogeneous) or population genetically heterogeneous	A capacity to respond over the long-term to habitat change
--	--	++	Phenotypic plasticity	A capacity to respond over the short-term to habitat change

**Fig 3.** (A) The hierarchical sampling design (19 sites x 10 trees site<sup>-1</sup> x 30 leaves tree<sup>-1</sup>) and (B) the possible ecological significance of contrasted patterns of distribution.

<https://doi.org/10.1371/journal.pone.0219908.g003>

population and individual scales, a general linear mixed model was fitted using the restricted maximum likelihood (RMEL) method, a nested ANOVA with random effects [22]. Subsequently, the Canberra metric (CM) calculated as:  $CM = (CV_{max} - CV_{min}) / (CV_{max} + CV_{min})$  tested for significant differences between the two coefficients of variation [116–118]. When the value of CM is higher than 0.1, differences are considered significant.

## Results

### Ecological relevance of coefficients of variation (CV) values

Mean and standard deviation for all measured leaf traits differed markedly in their amplitude of variation. Nevertheless, apart from DS, both were significantly correlated ( $X \nu \sigma$  calculations in Tables 3, 4, 5 and 6, S1 Table). Moreover, CV values generally did not vary in the same direction as the variance ratio,  $F$ . Thus, for example, LT had a low CV value (21%) but high  $F$  value and appeared strongly discriminant between populations (Table 3). Also, values for the Canberra metric (0.19 to 0.69; S1 Table) exceeded the 0.1 threshold for statistical significance. Our more extreme inter-population differences in CV for each traits may be viewed as both statistically and potentially ecologically significant.

### Variation in trait expression between and within populations

For each trait studied, statistically significant differences were detected between populations and for all but one of their CV values (Tables 3, 4, 5 and 6). The size of the variance ratio,  $F$ ,

Table 3. Mean traits  $\pm$  95% confidence limits of ‘ecophysiological’ leaf traits.

Population	CHL <sup>m</sup>	CV%	DS <sup>m</sup> (n/mm <sup>2</sup> )	CV%	LWC <sup>m</sup>	CV%	SLWC <sup>m</sup> (g H <sub>2</sub> O cm <sup>-2</sup> )	CV%	LT <sup>f,m</sup> (mm)	CV%
(A) Humid climate										
1. Tla Taghramt Med	72.9 $\pm$ 1.1 <sup>c,d</sup>	13.3	505 $\pm$ 4 <sup>f</sup>	7.3	0.089 $\pm$ 0.003 <sup>c,d</sup>	34.3	0.031 $\pm$ 0.001 <sup>c,d</sup>	40.6	0.36 $\pm$ 0.01 <sup>h,i</sup>	11.1
2. Tla Taghramt	58.9 $\pm$ 1.3 <sup>k</sup>	20.0	523 $\pm$ 5 <sup>e</sup>	9.2	0.090 $\pm$ 0.004 <sup>c,d</sup>	36.8	0.025 $\pm$ 0.001 <sup>c,f,g</sup>	27.3	0.31 $\pm$ 0.01 <sup>k</sup>	15.5
3. Ksar Sghir	70.7 $\pm$ 0.5 <sup>d,e,f</sup>	6.1	454 $\pm$ 4 <sup>h</sup>	7.7	0.062 $\pm$ 0.003 <sup>g,h</sup>	37.3	0.028 $\pm$ 0.001 <sup>c,d,e</sup>	34.8	0.44 $\pm$ 0.01 <sup>c</sup>	12.4
(B) Dry subhumid climate										
4. Bni Harchin	69.9 $\pm$ 1.2 <sup>e,f,g</sup>	15.3	276 $\pm$ 8 <sup>m</sup>	26.3	0.113 $\pm$ 0.005 <sup>b</sup>	39.7	0.037 $\pm$ 0.002 <sup>b</sup>	42.0	0.37 $\pm$ 0.01 <sup>h,i</sup>	17.5
5. Dar Chaoui	77.8 $\pm$ 2.6 <sup>a</sup>	30.1	417 $\pm$ 5 <sup>j</sup>	11.1	0.059 $\pm$ 0.003 <sup>g,h</sup>	45.7	0.024 $\pm$ 0.001 <sup>e,f,g</sup>	47.5	0.39 $\pm$ 0.01 <sup>e,f,g</sup>	10.5
6. Bni Arous	66.8 $\pm$ 1.0 <sup>h,i</sup>	13.4	364 $\pm$ 6 <sup>l</sup>	15.7	0.098 $\pm$ 0.006 <sup>c</sup>	53.6	0.040 $\pm$ 0.002 <sup>b</sup>	44.1	0.38 $\pm$ 0.01 <sup>f,g,h</sup>	11.1
7. Tnin Sidi Yamani	61.8 $\pm$ 1.0 <sup>j</sup>	14.6	390 $\pm$ 8 <sup>k</sup>	17.2	0.115 $\pm$ 0.006 <sup>b</sup>	46.8	0.031 $\pm$ 0.002 <sup>c,d</sup>	54.6	0.37 $\pm$ 0.01 <sup>h,i</sup>	11.5
8. Dar Akoubaa	76.5 $\pm$ 1.1 <sup>a,b</sup>	12.6	359 $\pm$ 6 <sup>l</sup>	14.3	0.120 $\pm$ 0.005 <sup>b</sup>	37.4	0.031 $\pm$ 0.001 <sup>c</sup>	34.2	0.48 $\pm$ 0.01 <sup>b</sup>	9.2
9. Ouezzene	67.7 $\pm$ 0.8 <sup>g,h,i</sup>	10.6	439 $\pm$ 6 <sup>h,i</sup>	12.0	0.058 $\pm$ 0.003 <sup>g,h,i</sup>	50.6	0.026 $\pm$ 0.001 <sup>d,e,f,g</sup>	42.0	0.40 $\pm$ 0.01 <sup>d,e,f</sup>	10.1
10. Mesmouda	65.6 $\pm$ 1.1 <sup>i</sup>	14.8	404 $\pm$ 5 <sup>j,k</sup>	11.0	0.085 $\pm$ 0.005 <sup>d</sup>	47.2	0.030 $\pm$ 0.001 <sup>c,d,e</sup>	41.3	0.44 $\pm$ 0.00 <sup>c</sup>	8.3
(C) Semi-arid climate										
11. Ras Ejery	72.2 $\pm$ 0.8 <sup>c,d,e</sup>	9.4	561 $\pm$ 7 <sup>d</sup>	10.8	0.063 $\pm$ 0.003 <sup>f,g</sup>	40.8	0.021 $\pm$ 0.001 <sup>g</sup>	25.3	0.37 $\pm$ 0.01 <sup>h,i</sup>	14.4
12. Bouqachmir	76.7 $\pm$ 0.7 <sup>a</sup>	8.2	362 $\pm$ 5 <sup>l</sup>	12.2	0.081 $\pm$ 0.005 <sup>d,e</sup>	51.8	0.025 $\pm$ 0.003 <sup>e,f,g</sup>	92.1	0.41 $\pm$ 0.01 <sup>d</sup>	10.2
13. Moulay Bouazza	77.4 $\pm$ 0.9 <sup>a</sup>	10.8	603 $\pm$ 6 <sup>b</sup>	13.5	0.388 $\pm$ 0.005 <sup>a</sup>	12.4	0.167 $\pm$ 0.006 <sup>a</sup>	33.8	0.60 $\pm$ 0.019 <sup>a</sup>	27.8
14. Sebt Ait-Rahou	73.8 $\pm$ 0.8 <sup>b,c</sup>	9.0	577 $\pm$ 7 <sup>c</sup>	10.3	0.083 $\pm$ 0.003 <sup>d,e</sup>	37.0	0.023 $\pm$ 0.001 <sup>f,g</sup>	27.6	0.38 $\pm$ 0.001 <sup>g,h,i</sup>	12.4
15. Oulad Aissa	71.4 $\pm$ 0.9 <sup>c,d,e,f</sup>	10.7	603 $\pm$ 6 <sup>b</sup>	9.3	0.055 $\pm$ 0.002 <sup>g,h,i</sup>	35.0	0.026 $\pm$ 0.001 <sup>d,e,f,g</sup>	26.7	0.34 $\pm$ 0.01 <sup>j</sup>	12.3
16. El Ksiba	69.7 $\pm$ 0.9 <sup>e,f,g</sup>	11.1	481 $\pm$ 9 <sup>g</sup>	15.9	0.052 $\pm$ 0.002 <sup>h,i</sup>	35.9	0.022 $\pm$ 0.001 <sup>f,g</sup>	35.5	0.40 $\pm$ 0.01 <sup>d,e</sup>	11.2
17. Bin Ouidane	62.2 $\pm$ 0.7 <sup>j</sup>	10.5	521 $\pm$ 6 <sup>e</sup>	10.5	0.049 $\pm$ 0.002 <sup>i</sup>	35.0	0.026 $\pm$ 0.001 <sup>c,d,e,f,g</sup>	27.7	0.43 $\pm$ 0.01 <sup>c</sup>	9.5
18. Asni	68.6 $\pm$ 0.8 <sup>f,g,h</sup>	10.1	621 $\pm$ 6 <sup>a</sup>	8.9	0.073 $\pm$ 0.005 <sup>e,f</sup>	66.5	0.027 $\pm$ 0.003 <sup>c,d,e,f</sup>	85.1	0.44 $\pm$ 0.00 <sup>c</sup>	8.8
19. Ouirgane	69.8 $\pm$ 1.0 <sup>e,f,g</sup>	12.9	438 $\pm$ 6 <sup>i</sup>	12.8	0.080 $\pm$ 0.004 <sup>d,e</sup>	38.7	0.021 $\pm$ 0.001 <sup>g</sup>	29.8	0.36 $\pm$ 0.01 <sup>i</sup>	17.9
Mean	70.0 $\pm$ 0.3	15.8	462.3 $\pm$ 3	23.6	0.092 $\pm$ 0.002	85.4	0.034 $\pm$ 0.001	105.51	0.40 $\pm$ 0.00	20.9
$X \nu \sigma$ (r)	0.300 <sup>**</sup>		0.088 ns		0.428 <sup>**</sup>		0.772 <sup>**</sup>		0.598 <sup>**</sup>	
ANOVA $F_{19,5699}$	91.7 <sup>***</sup>		947.1 <sup>***</sup>		1242.2 <sup>***</sup>		962.4 <sup>***</sup>		328.3 <sup>***</sup>	

<https://doi.org/10.1371/journal.pone.0219908.t003>

**Table 4. Mean traits ± 95% confidence limits of ‘morphological size and shape’ leaf traits.**

Population	LA <sup>f,m</sup> (cm <sup>2</sup> )	CV%	LL <sup>f,m</sup> (cm)	CV%	LW <sup>f,m</sup> (cm)	CV%	LL <sub>max</sub> <sup>f,m</sup> (cm)	CV%	LL/LW <sup>m</sup>	CV%	LL/LL <sub>max</sub> <sup>m</sup>	CV%
<b>(A) Humid climate</b>												
1. Tla Taghramt Med	3.04 ± 0.10 <sup>d,e</sup>	29.5	3.49 ± 0.08 <sup>h,i</sup>	19.9	1.25 ± 0.02 <sup>b</sup>	17.4	2.20 ± 0.07 <sup>e,f</sup>	27.2	2.84 ± 0.07 <sup>j</sup>	20.7	1.65 ± 0.05 <sup>e,f,g,h</sup>	24.3
2. Tla Taghramt	<b>3.71 ± 0.15<sup>b</sup></b>	35.6	3.81 ± 0.09 <sup>e,f,g</sup>	22.0	<b>1.37 ± 0.03<sup>a</sup></b>	19.7	2.60 ± 0.08 <sup>c,d</sup>	26.5	2.80 ± 0.05 <sup>j</sup>	17.0	<b>1.51 ± 0.03<sup>i</sup></b>	19.8
3. Ksar Sghir	2.27 ± 0.08 <sup>h,i</sup>	31.8	3.10 ± 0.07 <sup>k</sup>	21.1	1.09 ± 0.02 <sup>d,e</sup>	14.0	1.97 ± 0.08 <sup>h,i</sup>	33.9	2.88 ± 0.07 <sup>i,j</sup>	22.6	1.73 ± 0.08 <sup>d,e</sup>	39.1
<b>(B) Dry subhumid climate</b>												
4. Bni Harchin	3.33 ± 0.14 <sup>c,d</sup>	37.8	3.64 ± 0.11 <sup>g,h</sup>	26.4	<b>1.37 ± 0.03<sup>a</sup></b>	19.8	2.26 ± 0.08 <sup>e</sup>	31.2	2.68 ± 0.07 <sup>j</sup>	22.8	1.68 ± 0.05 <sup>e,f,g</sup>	26.0
5. Dar Chaoui	2.57 ± 0.09 <sup>g,h</sup>	31.0	3.25 ± 0.08 <sup>i,j,k</sup>	21.5	1.15 ± 0.02 <sup>c,d</sup>	18.1	1.98 ± 0.05 <sup>h,i</sup>	22.2	2.90 ± 0.08 <sup>i,j</sup>	23.5	1.66 ± 0.03 <sup>e,f,g,h</sup>	14.1
6. Bni Arous	2.45 ± 0.11 <sup>g,h,i</sup>	40.9	3.33 ± 0.11 <sup>i,j,k</sup>	29.8	1.08 ± 0.02 <sup>e</sup>	18.4	2.18 ± 0.10 <sup>e,f,g</sup>	40.8	3.10 ± 0.08 <sup>h,i</sup>	24.3	1.64 ± 0.05 <sup>e,f,g,h</sup>	26.2
7. Tnin Sidi Yamani	<b>3.99 ± 0.15<sup>a,b</sup></b>	32.5	4.34 ± 0.08 <sup>c</sup>	16.1	<b>1.35 ± 0.03<sup>a</sup></b>	21.0	<b>2.69 ± 0.07<sup>b,c</sup></b>	22.7	3.30 ± 0.07 <sup>g,h</sup>	18.2	1.67 ± 0.04 <sup>e,f,g,h</sup>	23.2
8. Dar Akoubaa	<b>4.08 ± 0.19<sup>a</sup></b>	42.1	<b>5.38 ± 0.15<sup>a</sup></b>	25.1	1.24 ± 0.04 <sup>b</sup>	27.3	<b>3.55 ± 0.13<sup>a</sup></b>	33.0	<b>4.47 ± 0.11<sup>a</sup></b>	22.0	1.59 ± 0.05 <sup>g,h,i</sup>	25.3
9. Ouezzene	2.29 ± 0.09 <sup>h,i</sup>	33.4	3.38 ± 0.08 <sup>ij</sup>	20.0	0.98 ± 0.02 <sup>f,g</sup>	17.9	1.99 ± 0.08 <sup>h,i</sup>	34.6	3.49 ± 0.07 <sup>d,e,f,g</sup>	19.0	1.86 ± 0.07 <sup>b,c</sup>	34.5
10. Mesmouda	2.89 ± 0.09 <sup>e,f</sup>	28.6	3.98 ± 0.08 <sup>d,e</sup>	17.5	1.13 ± 0.03 <sup>d,e</sup>	20.8	2.56 ± 0.07 <sup>c,d</sup>	24.2	3.62 ± 0.09 <sup>c,d,e</sup>	22.5	1.61 ± 0.04 <sup>f,g,h</sup>	22.5
<b>(C) Semi-arid climate</b>												
11. Ras Ejery	2.98 ± 0.11 <sup>e,f</sup>	32.2	3.89 ± 0.08 <sup>e,f</sup>	17.7	1.15 ± 0.03 <sup>c,d</sup>	19.3	1.90 ± 0.04 <sup>i</sup>	18.9	3.43 ± 0.07 <sup>e,f,g</sup>	17.3	<b>2.06 ± 0.03<sup>a</sup></b>	11.8
12. Bouqachmir	3.38 ± 0.13 <sup>c</sup>	34.8	4.19 ± 0.08 <sup>c,d</sup>	16.8	1.20 ± 0.03 <sup>b,c</sup>	21.0	2.23 ± 0.05 <sup>e,f</sup>	19.7	3.57 ± 0.06 <sup>d,e,f</sup>	14.7	<b>1.90 ± 0.02<sup>b</sup></b>	10.9
13. Moulay Bouazza	2.55 ± 0.09 <sup>g,h</sup>	31.5	3.78 ± 0.08 <sup>e,f,g</sup>	19.7	1.01 ± 0.02 <sup>f</sup>	18.2	2.11 ± 0.04 <sup>e,f,g,h</sup>	17.8	<b>3.81 ± 0.09<sup>b,c</sup></b>	20.1	1.80 ± 0.02 <sup>c,d</sup>	8.7
14. Sebt Ait-Rahou	3.70 ± 0.14 <sup>b</sup>	33.1	4.26 ± 0.08 <sup>c</sup>	16.7	1.31 ± 0.03 <sup>a</sup>	21.4	2.49 ± 0.05 <sup>d</sup>	19.2	3.33 ± 0.07 <sup>g</sup>	19.6	1.73 ± 0.02 <sup>d,e</sup>	12.0
15. Oulad Aissa	2.19 ± 0.07 <sup>ij</sup>	29.9	3.26 ± 0.09 <sup>ij,k</sup>	24.1	0.99 ± 0.02 <sup>f,g</sup>	16.5	2.01 ± 0.06 <sup>g,h,i</sup>	24.3	3.37 ± 0.11 <sup>f,g</sup>	27.8	1.63 ± 0.02 <sup>e,f,g,h</sup>	9.2
16. El Ksiba	2.46 ± 0.08 <sup>g,h,i</sup>	28.5	3.66 ± 0.08 <sup>f,g,h</sup>	19.3	1.01 ± 0.02 <sup>f</sup>	16.7	1.96 ± 0.04 <sup>h,i</sup>	19.0	<b>3.69 ± 0.08<sup>b,c,d</sup></b>	20.2	<b>1.88 ± 0.02<sup>b,c</sup></b>	10.6
17. Bin Ouidane	1.92 ± 0.07 <sup>j</sup>	33.1	3.19 ± 0.06 <sup>jk</sup>	17.8	0.94 ± 0.02 <sup>g</sup>	18.9	2.06 ± 0.03 <sup>f,g,h,i</sup>	12.2	3.56 ± 0.12 <sup>d,e,f</sup>	29.3	1.57 ± 0.03 <sup>h,i</sup>	18.7
18. Asni	2.70 ± 0.12 <sup>f,g</sup>	39.1	4.19 ± 0.15 <sup>c,d</sup>	31.2	0.96 ± 0.02 <sup>f,g</sup>	18.6	2.10 ± 0.08 <sup>e,f,g,h</sup>	31.6	<b>4.33 ± 0.12<sup>a</sup></b>	24.5	<b>2.01 ± 0.02<sup>a</sup></b>	9.5
19. Ouirgane	<b>3.96 ± 0.16<sup>a,b</sup></b>	35.1	<b>4.73 ± 0.12<sup>b</sup></b>	22.9	1.24 ± 0.03 <sup>b</sup>	18.8	<b>2.81 ± 0.08<sup>b</sup></b>	25.3	<b>3.86 ± 0.10<sup>b</sup></b>	21.7	1.70 ± 0.02 <sup>d,e,f</sup>	11.9
Mean	2.92 ± 0.03	41.7	3.39 ± 0.03	26.1	1.14 ± 0.01	14.0	2.27 ± 0.02	32.3	3.39 ± 0.02	26.1	1.73 ± 0.01	22.1
X v σ (r)	0.792 <sup>***</sup>		0.602 <sup>***</sup>		0.564 <sup>***</sup>		0.525 <sup>***</sup>		0.610 <sup>***</sup>		0.316 <sup>***</sup>	
ANOVA F <sub>19,5699</sub>	124.1 <sup>***</sup>		143.4 <sup>***</sup>		122.3 <sup>***</sup>		127.8 <sup>***</sup>		128.8 <sup>***</sup>		52.8 <sup>***</sup>	

<https://doi.org/10.1371/journal.pone.0219908.t004>

differed considerably and traits with the highest value of *F* in Tables 3, 4, 5 and 6 also exhibited more of their percentage variance at the highest hierarchical level (i.e. between populations; Table 7). Thus, with the exception of CHL, ‘ecophysiological’ leaf traits, mostly classified as ‘mechanistic’, had a higher value for the variance ratio than those relating to ‘morphological size and shape’ and to ‘structural allocation’ (Tables 3, 4 and 5). They also contained 50 to 80 percent of the total variance ‘between populations’ (Table 4). At the opposite end of the spectrum were LDMC and SLA, two key ‘functional’ traits in the ‘worldwide leaf economics spectrum’ [5], and LL/LL<sub>max</sub>. These traits appeared inherently plastic, with 48 to 61 percent variance between leaves on the same tree. A majority of morphological traits (LA, LL, LL<sub>max</sub>, LL/LW) were intermediate with the percentage variance slightly higher at the ‘population’ level (42–48%). For the remainder, variance in trait expression was distributed relatively evenly between the three hierarchical levels.

### Interrelationships between traits and the identification of syndromes of co-occurring traits

Correlation matrices for the traits and for their CV values are presented as Table 8 and S2 Table, respectively. Correlations between traits (Table 8) ranged in number (and percentage) from CHL (0, 0%) to, at the other extreme, DBH (9, 53%), with SLA (6, 35%) and LDMC (7, 41%). The mean number of correlations with other traits ± standard deviation could be

Table 5. Mean traits ± 95% confidence limits of ‘structural allocation’ leaf traits.

Population	LWM <sup>f</sup> (g)	CV%	LDM <sup>f</sup> (g)	CV%	SLA <sup>f</sup> (cm <sup>2</sup> g <sup>-1</sup> )	CV%	LDMC <sup>f</sup> (g. mg <sup>-1</sup> )	CV%
(A) Humid climate								
1. Tla Taghramt Med	0.135 ± 0.004 <sup>c,d,e</sup>	28.5	0.046 ± 0.002 <sup>f,g,h</sup>	33.1	70.0 ± 2.7 <sup>d</sup>	34.0	347.2 ± 9.8 <sup>g,h</sup>	25.0
2. Tla Taghramt	0.130 ± 0.005 <sup>d,e</sup>	34.0	0.041 ± 0.002 <sup>h,i,j</sup>	44.4	<b>96.9 ± 3.7<sup>a</sup></b>	33.4	316.8 ± 9.6 <sup>h,i</sup>	26.7
3. Ksar Sghir	0.107 ± 0.004 <sup>f</sup>	32.5	0.046 ± 0.002 <sup>f,g,h,i</sup>	38.6	52.6 ± 2.0 <sup>h,i,j</sup>	32.8	429.8 ± 11.4 <sup>b,c</sup>	23.3
(B) Dry subhumid climate								
4. Bni Harchin	<b>0.164 ± 0.007<sup>b</sup></b>	36.6	0.051 ± 0.003 <sup>d,e,f</sup>	53.3	<b>78.6 ± 4.6<sup>b,c</sup></b>	52.5	311.0 ± 13.5 <sup>i</sup>	38.6
5. Dar Chaoui	0.102 ± 0.004 <sup>f</sup>	32.2	0.043 ± 0.002 <sup>g,h,i</sup>	34.6	62.7 ± 2.0 <sup>e,f</sup>	27.7	433.9 ± 14.3 <sup>b,c</sup>	29.0
6. Bni Arous	0.138 ± 0.007 <sup>c,d</sup>	43.2	0.041 ± 0.002 <sup>h,i,j</sup>	38.3	63.0 ± 2.5 <sup>e,f</sup>	34.1	323.9 ± 13.6 <sup>h,i</sup>	35.9
7. Tnin Sidi Yamani	<b>0.174 ± 0.007<sup>b</sup></b>	34.8	<b>0.059 ± 0.003<sup>b,c</sup></b>	37.3	72.1 ± 3.6 <sup>c,d</sup>	42.4	364.0 ± 16.7 <sup>f,g</sup>	38.7
8. Dar Akoubaa	<b>0.214 ± 0.008<sup>a</sup></b>	34.3	<b>0.096 ± 0.005<sup>a</sup></b>	46.6	47.2 ± 3.0 <sup>j</sup>	54.1	441.1 ± 14.1 <sup>b,c</sup>	27.0
9. Ouezzene	0.097 ± 0.004 <sup>f,g</sup>	40.8	0.041 ± 0.002 <sup>g,h,i,j</sup>	38.2	59.3 ± 1.7 <sup>f,g,h</sup>	63.6	429.5 ± 14.5 <sup>b,c</sup>	28.4
10. Mesmouda	0.147 ± 0.005 <sup>c</sup>	32.8	<b>0.064 ± 0.002<sup>b</sup></b>	29.0	47.6 ± 1.9 <sup>i,j</sup>	35.2	<b>456.3 ± 15.8<sup>a,b</sup></b>	29.9
(C) Semi-arid climate								
11. Ras Ejery	0.104 ± 0.004 <sup>f</sup>	33.4	0.041 ± 0.001 <sup>g,h,i,j</sup>	29.6	74.1 ± 2.3 <sup>c,d</sup>	27.2	409.6 ± 10.1 <sup>c,d,e</sup>	21.8
12. Bouqachmir	0.137 ± 0.005 <sup>c,d</sup>	32.7	0.057 ± 0.002 <sup>c,d</sup>	30.9	60.0 ± 1.7 <sup>f,g</sup>	24.3	425.9 ± 9.1 <sup>b,c,e</sup>	18.9
13. Moulay Bouazza	0.103 ± 0.004 <sup>f</sup>	31.9	0.040 ± 0.002 <sup>i,j</sup>	40.6	67.7 ± 2.4 <sup>d,e</sup>	37.3	394.0 ± 11.2 <sup>f</sup>	25.5
14. Sebt Ait-Rahou	0.139 ± 0.006 <sup>c,d</sup>	36.6	0.055 ± 0.003 <sup>c,d,e</sup>	45.0	72.7 ± 2.4 <sup>c,d</sup>	29.3	396.6 ± 10.6 <sup>d,e</sup>	23.5
15. Oulad Aissa	0.083 ± 0.003 <sup>h</sup>	30.5	0.029 ± 0.001 <sup>k</sup>	38.3	<b>83.1 ± 3.2<sup>b</sup></b>	33.7	344.5 ± 10.5 <sup>g,h</sup>	26.5
16. El Ksiba	0.099 ± 0.003 <sup>f</sup>	27.7	0.047 ± 0.002 <sup>f,g</sup>	31.3	54.5 ± 1.9 <sup>g,h,i</sup>	31.0	<b>476.9 ± 11.3<sup>a</sup></b>	21.0
17. Bin Ouidane	0.085 ± 0.003 <sup>g,h</sup>	31.4	0.036 ± 0.001 <sup>j</sup>	35.5	54.8 ± 1.5 <sup>g,h</sup>	24.6	430.4 ± 10.0 <sup>b,c</sup>	20.4
18. Asni	0.123 ± 0.006 <sup>e</sup>	45.2	0.050 ± 0.002 <sup>e,f</sup>	35.6	56.8 ± 2.80 <sup>f,g,h</sup>	43.2	438.3 ± 15.8 <sup>b,c</sup>	31.7
19. Ouirgane	0.144 ± 0.006 <sup>c</sup>	35.3	<b>0.064 ± 0.003<sup>b</sup></b>	44.1	70.3 ± 3.7 <sup>d</sup>	46.9	438.3 ± 13.0 <sup>b,c</sup>	26.2
Mean	0.125 ± 0.001	44.1	0.049 ± 0.001	49.9	65.3 ± 0.7	40.9	406.3 ± 3.1	29.8
X v σ (r)	0.671 <sup>***</sup>		0.795 <sup>***</sup>		0.635 <sup>***</sup>		0.364 <sup>***</sup>	
ANOVA F <sub>19,5699</sub>	154.4 <sup>***</sup>		141.3 <sup>***</sup>		82.9 <sup>***</sup>		63.3 <sup>***</sup>	

<https://doi.org/10.1371/journal.pone.0219908.t005>

roughly ordered as: ‘ecophysiological’ [‘mechanistic’] (4.0 ± 3.3, n = 5) < ‘morphological’ [‘intermediate’] (5.7 ± 2.5, n = 6) < ‘structural’ [‘functional’] (7.0 ± 0.8, n = 4) = ‘whole plant’ [‘functional’] (6.5 ± 3.5, n = 2). Fewer statistically significant relationships were detected in the correlation matrix for CV values and of these, a disproportionately high 40 percent related to ‘structural’ traits including SLA and LDMC (S2 Table).

With regard to estimates of CSR strategy, which is described in the Introduction, populations were classified variously as stress-tolerant competitors (SC) and as intermediate between this strategy and stress-tolerators (S/SC), with percentage values ranging from 9–19 for the competitive (C) dimension, 81–91 for stress-tolerance (S) and consistently zero for ruderality (R; Table 6). In the PCA analyses of traits (Table 9) axis 1 identified size and was positively correlated with plant dimensions (DBH, H) and a plethora of size-related leaf traits (LA, LL, LL<sub>max</sub>, LW, LWC, LWM, LDM). Axis 2 included aspects of the ‘worldwide leaf economics spectrum’ [5,6] with LT and LDMC (both positively) and SLA (negatively) impacting upon the expression of the axis. High values on axis 3 was identified by small leaves (LL<sup>-</sup>), a high water content (SLWC<sup>+</sup>), high leaf construction costs (SLA<sup>-</sup>) and low stomatal density (DS<sup>-</sup>). We need to investigate whether trait expression in site 13, a functional outlier, excluded from the analyses because of its high values for LT (value 125% that of the next highest site average; Table 3), LWC (>300%) and SLWC (>400%), is influenced by similar factors to those defining this axis. The PCA analysis for traits plus CV values, included for completeness as S3 Table, generated broadly similar results.

**Table 6. Mean traits ± 95% confidence limits whole plant traits (i) and syndromes (ii).**

Population	(i) H <sup>f</sup>	CV%	DBH <sup>f</sup>	CV%	(ii) C% (CSR strategy)
<b>(A) Humid climate</b>					
1. Tla Taghramt Med	<b>10.6 ± 1.8<sup>a</sup></b>	26.9	<b>175.3 ± 65.7<sup>a,b</sup></b>	60.5	15.7 (S)
2. Tla Taghramt	<b>12.5 ± 0.8<sup>a</sup></b>	10.8	<b>239.4 ± 31.6<sup>a</sup></b>	21.3	19.3 (S/CS)
3. Ksar Sghir	2.6 ± 0.4 <sup>e,f</sup>	27.1	15.3 ± 3.7 <sup>c</sup>	39.5	10.1 (S)
<b>(B) Dry subhumid climate</b>					
4. Bni Harchin	5.7 ± 1.8 <sup>b,c</sup>	52.0	<b>170.4 ± 80.4<sup>a,b</sup></b>	76.1	18.5 (S/CS)
5. Dar Chaoui	4.0 ± 1.3 <sup>c,d,e,f</sup>	52.6	29.5 ± 9.6 <sup>c</sup>	52.7	11.2 (S)
6. Bni Arous	4.3 ± 1.2 <sup>b,c,d,e,f</sup>	44.6	70.0 ± 39.7 <sup>c</sup>	91.5	16.5 (S/CS)
7. Tnin Sidi Yamani	5.6 ± 0.4 <sup>b,c</sup>	11.0	62.3 ± 8.4 <sup>c</sup>	21.8	18.4 (S/CS)
8. Dar Akoubaa	6.7 ± 0.9 <sup>b</sup>	22.7	<b>205.2 ± 69.9<sup>a</sup></b>	55.0	13.9 (S)
9. Ouezzene	3.5 ± 0.5 <sup>c,d,e,f</sup>	23.7	24.1 ± 7.6 <sup>c</sup>	50.9	10.3 (S)
10. Mesmouda	2.9 ± 0.5 <sup>e,f</sup>	25.4	23.0 ± 7.8 <sup>c</sup>	54.4	11.7 (S)
<b>(C) Semi-arid climate</b>					
11. Ras Ejery	4.2 ± 0.7 <sup>c,d,e,f</sup>	25.8	18.8 ± 5.6 <sup>c</sup>	47.8	13.1 (S)
12. Bouqachmir	3.9 ± 1.2 <sup>c,d,e,f</sup>	48.3	40.2 ± 11.8 <sup>c</sup>	47.4	13.4 (S)
13. Moulay Bouazza	4.4 ± 0.6 <sup>b,c,d,e</sup>	23.5	60.2 ± 7.9 <sup>c</sup>	21.2	12.1 (S)
14. Sebt Ait-Rahou	4.4 ± 0.5 <sup>b,c,d,e,f</sup>	20.1	73.1 ± 19.9 <sup>c</sup>	44.0	14.9 (S)
15. Oulad Aissa	5.3 ± 0.5 <sup>b,c,d</sup>	14.5	97.9 ± 14.1 <sup>b,c</sup>	23.3	12.4 (S)
16. El Ksiba	3.8 ± 0.8 <sup>c,d,e,f</sup>	35.0	37.0 ± 11.1 <sup>c</sup>	48.6	9.7 (S)
17. Bin Ouidane	2.0 ± 0.2 <sup>f</sup>	17.1	17.1 ± 4.4 <sup>c</sup>	41.8	9.1 (S)
18. Asni	3.0 ± 0.7 <sup>d,e,f</sup>	38.7	42.2 ± 14.5 <sup>c</sup>	55.2	12.9 (S)
19. Ouirgane	4.2 ± 0.6 <sup>c,d,e,f</sup>	24.2	63.0 ± 9.6 <sup>c</sup>	24.7	13.8 (S)
Mean	4.9 ± 1.3	59.4	77.1 ± 37.5	108.3	
X v σ (r)	0.810 <sup>***</sup>		0.453 ns		
ANOVA F <sub>19,190</sub>	30.3 <sup>***</sup>		17.4 <sup>***</sup>		

CV identifies coefficient of variation at the intra-population level expressed as a percentage. For CSR strategies, calculated following Pierce et al. [4] values for ruderal (R) were always 0%. In consequence only data for % competitive (C) are presented. A significant Pearson r correlation between mean (X) and standard deviation (σ) justifies the use of CV in comparisons of trait variability (see Materials and Methods).

Values with the same suffix are not statistically significantly different at P < 0.05 in Tukey HSD post hoc tests with groupings with highest trait values in bold and the lowest with a grey background. Functional' and 'mechanistic' traits are identified as prefixes using the same notation as in Table 2. The level of significance is expressed as follow

\*\*\* P < 0.001; ns, not statistically significant.

<https://doi.org/10.1371/journal.pone.0219908.t006>

### Correlates with climate

Each site has its own characteristic climatic regime (Table 1). As a result, for a canopy dominant such as oleaster, traits that pattern most strongly with site are also more likely to pattern with climate. Consistent with this, the traits that varied most between sites (with the suffix <sup>s</sup>) had the greatest percentage of statistically significant correlations with climatic indices (45%; Table 10A). These traits were classified as ecophysiological/'mechanistic'. In contrast, for traits where more variance was expressed within the same population (morphological/'intermediate', <sup>t</sup>) or between leaves on the same tree (leaf/'functional', <sup>l</sup>), the percentage of statistically significant correlations was lower (25% and 6% respectively; Table 10A).

The traits most consistently correlated with climate were DS and leaf shape (LL/LW), negatively, and SLWC, positively correlated with mean annual precipitation (MAP), minimum temperature of the coldest month (MTCM), global aridity index (AI) and Altitude (Table 10A). The only trait significantly correlated with mean annual temperature (MAT) was

Table 7. Estimated percentage variance across hierarchical levels (site:tree:leaf) patterns differently for contrasted groupings of leaf traits.

Trait	% of variance			
	Sites	Tree	Leaf	Residual
Ecophysiological				
<i><sup>m</sup>CHL<sup>l</sup></i>	17.0	24.6	<b>50.1</b>	8.3
<i><sup>m</sup>DS<sup>s</sup></i>	<b>74.0</b>	6.6	16.0	3.4
<i><sup>m</sup>LWC<sup>s</sup></i>	<b>79.9</b>	7.4	10.3	2.5
<i><sup>m</sup>SLWC<sup>s</sup></i>	<b>75.6</b>	7.3	14.0	3.1
<i><sup>f,m</sup>LT<sup>s</sup></i>	<b>50.6</b>	16.2	27.9	5.3
Morphological				
<i><sup>f,m</sup>LA<sup>t</sup> - <sup>f,m</sup></i>	25.0	<b>43.4</b>	26.3	5.3
<i><sup>f,m</sup>LL<sup>t</sup> - <sup>f,m</sup></i>	27.6	<b>47.8</b>	20.2	4.4
<i><sup>f,m</sup>LW<sup>l</sup></i>	25.6	33.6	34.4	6.4
<i><sup>f,m</sup>LL<sub>max</sub><sup>t</sup></i>	23.7	<b>43.5</b>	27.3	5.4
<i><sup>m</sup>LL/LW<sup>t</sup></i>	25.8	<b>42.8</b>	26.2	5.3
<i><sup>m</sup>LL/LL<sub>max</sub><sup>l</sup></i>	13.2	16.2	<b>61.0</b>	9.6
Structural				
<i><sup>f</sup>LWM<sup>t</sup></i>	30.6	33.5	30.2	5.8
<i><sup>f</sup>LDM<sup>t</sup></i>	29.3	36.5	28.6	5.6
<i><sup>f</sup>SLA<sup>l</sup></i>	19.5	24.2	<b>48.2</b>	8.1
<i><sup>f</sup>LDMC<sup>l</sup></i>	14.8	29.1	<b>48.0</b>	8.2

Here and in the remaining Tables, the italicized first letter added as a suffix to the trait identifies the hierarchical level with the maximum value for variance and additionally very high values (> 40%) are in bold. ‘Functional’ and ‘mechanistic’ traits are identified as prefixes using the same notation as in Table 2.

<https://doi.org/10.1371/journal.pone.0219908.t007>

DS (Table 10A). Importantly, SLA, a ‘flagship’ trait in both the ‘leaf economics spectrum’ and, more generally, in trait-based plant ecology, was one of the traits not correlated directly with any of the climatic variables.

Of the syndromes of traits, PCA axis 3, which explained only 12% of the variation in the dataset (Table 9), was correlated with all five climatic-related variables (Table 10A). In addition, PCA axis 2 patterned with MTCM and AI. However, PCA axis 1 and CSR strategies showed no significant correlations. Moreover, the additional inclusion of CV in PCA analyses axes reduced rather than enhanced the extent of correlation with climatic variables (S3 Table) and in separate analyses of CV values only the traits LL/LL<sub>max</sub>, LDMC and CHL were frequently correlated with climate (Table 10B).

## Discussion

### The traits and trait syndromes that pattern with climate± and those that don’t

A basic premise in much of trait-based ecology is that taxa may be grouped using physiological and morphological traits into functional types, with taxa in the same functional group displaying similar responses to the environment [119,120]. Consistent with this, major PCA analyses of the world flora have routinely identified two key dimensions of functional specialization, the ‘worldwide leaf economics spectrum’ and size [12,13]. Here, for populations within a single species, oleaster, we confirm these generalities. Axes 1 and 2 in our PCA analysis are analogous with the same two axes recognized in global studies (Tables 3–10). However, these axes did not consistently pattern with climatic variables. Instead, a further ‘climatic’ PCA axis 3, was identified defined primarily in terms of ecophysiological/‘mechanistic’ leaf traits (Table 10A).

**Table 8. Correlation matrix for trait values (n = 18).** Site 13 (Moulay Bouazza) with exceptionally high values for LWC, SLWC and LT has been excluded from this and subsequent analyses.

Traits	CHL	DS	LWC	SLWC	LT	LA	LW	LL	LL <sub>max</sub>	LL/LW	LL/LL <sub>max</sub>	LWM	LDM	SLA	LDMC	H
Ecophysiological																
DS	-0.102															
LWC	-0.056	<b>-0.580</b>														
SLWC	-0.156	<b>-0.573</b>	<b>0.628</b>													
LT	0.262	-0.184	-0.013	0.125												
Morphological																
LA	0.066	-0.282	<b>0.759</b>	-0.019	-0.170											
LW	0.006	-0.383	<b>0.746</b>	0.157	-0.414	<b>0.853</b>										
LL	0.189	-0.164	<b>0.589</b>	-0.119	0.263	<b>0.834</b>	0.447									
LL <sub>max</sub>	-0.008	-0.341	<b>0.737</b>	0.164	0.201	<b>0.803</b>	<b>0.555</b>	<b>0.849</b>								
LL/LW	0.151	0.169	-0.004	-0.259	<b>0.620</b>	0.159	-0.360	<b>0.669</b>	0.421							
LL/LL <sub>max</sub>	0.321	0.272	-0.350	-0.387	0.168	-0.161	-0.331	0.049	-0.458	0.319						
Structural																
LWM	0.089	<b>-0.573</b>	<b>0.944</b>	0.464	0.215	<b>0.815</b>	<b>0.681</b>	<b>0.774</b>	<b>0.866</b>	0.239	-0.286					
LDM	0.287	-0.451	<b>0.643</b>	0.117	<b>0.530</b>	<b>0.704</b>	0.409	<b>0.881</b>	<b>0.870</b>	<b>0.568</b>	-0.119	<b>0.859</b>				
SLA	-0.271	0.233	0.138	-0.095	<b>-0.933</b>	0.287	<b>0.503</b>	-0.127	-0.064	<b>-0.537</b>	-0.183	-0.086	-0.425			
LDMC	0.289	0.096	-0.454	<b>-0.543</b>	<b>0.694</b>	-0.164	<b>-0.474</b>	0.244	0.008	<b>0.642</b>	0.399	-0.157	0.341	<b>-0.766</b>		
Whole Plant																
H	-0.166	0.031	0.447	0.141	<b>-0.561</b>	0.467	<b>0.610</b>	0.130	0.339	-0.361	-0.419	0.316	0.039	<b>0.639</b>	<b>-0.626</b>	
DBH	-0.073	-0.145	<b>0.625</b>	0.340	-0.333	<b>0.521</b>	<b>0.606</b>	0.296	<b>0.543</b>	-0.179	<b>-0.512</b>	<b>0.534</b>	0.271	<b>0.503</b>	<b>-0.618</b>	<b>0.879</b>

Here and in Table 9, values relate to Pearson r and statistically significant values at P < 0.05 are in bold.

<https://doi.org/10.1371/journal.pone.0219908.t008>

Equally, a majority of the statistically significant correlations between individual traits and climate included ecophysiological/‘mechanistic’ leaf traits rather than the more commonly used structural/‘functional’ ones (Table 10A). However, a precise interpretation in terms of ecological processes is not yet feasible. Both the origin and the generality of variability in trait expression are in need of further study. Oleaster is slow-growing and long-lived [56,59] and will experience variations in climate during its lifetime. Moreover, it exhibits high levels of genetic heterozygosity [54,121–127]. Variability in trait expression will have been affected by genotype, phenotypic plasticity [16,128] and potentially differences in phenology and in the land-use and climatic history of the study sites. Furthermore, a different choice of species may have led to a very different set of results and conclusions: ‘functional’ traits are predicted to pattern more strongly with climate for fast-growing and short-lived species (Fig 1). Nevertheless, these equivocations do not alter the basic message of this study. ‘Mechanistic’ traits must be routinely included in climate-related studies.

### A preliminary assessment of the ‘climatic’ PCA 3 axis in oleaster

Oleaster is a thermophilic species with limited resistance to both cold and extreme aridity [55]. Moreover, aridity is generally regarded as the key climatic factor determining species composition in Mediterranean vegetation. The ‘climatic’ PCA axis 3 was correlated positively with MAT, MAP, MTCM and AI and negatively with altitude (Table 10A). Thus, high values of PCA axis 3 equated to high mean annual temperature, high minimum temperature of the coldest month, high mean annual precipitation, high aridity and low altitude. In terms of the traits that define PCA axis 3 (Table 9), these climatic extremes were associated with low stomatal density (DS<sup>-</sup>) low leaf water content (SLWC<sup>-</sup>), small leaves (LL<sup>-</sup>) and high leaf construction

**Table 9. The traits that define ‘syndromes’: correlations between traits and the three PCA axes identified.**

Trait	PCA 1	PCA 2	PCA 3
Ecophysiological			
CHL <sup>l</sup>	-0.017	0.380	-0.119
DS <sup>s</sup>	<b>-0.488</b>	-0.161	<b>-0.631</b>
LWC <sup>s</sup>	<b>0.936</b>	0.020	0.231
SLWC <sup>s</sup>	0.396	-0.160	<b>0.829</b>
LT <sup>s</sup>	-0.104	<b>0.864</b>	0.351
Morphological			
LA <sup>t</sup>	<b>0.877</b>	0.119	-0.387
LW <sup>t</sup>	<b>0.832</b>	-0.281	-0.167
LL <sup>l</sup>	<b>0.688</b>	<b>0.579</b>	<b>-0.403</b>
LL <sub>max</sub> <sup>t</sup>	<b>0.862</b>	0.364	-0.106
LL/LW <sup>t</sup>	0.026	<b>0.825</b>	-0.289
LL/LL <sub>max</sub> <sup>l</sup>	-0.458	0.328	-0.348
Structural			
LWM <sup>t</sup>	<b>0.928</b>	0.312	0.135
LDM <sup>t</sup>	<b>0.703</b>	<b>0.700</b>	-0.026
SLA <sup>l</sup>	0.240	<b>-0.840</b>	<b>-0.414</b>
LDMC <sup>l</sup>	-0.393	<b>0.831</b>	-0.180
Whole Plant			
H	<b>0.598</b>	<b>-0.583</b>	-0.244
DBH	<b>0.753</b>	-0.393	-0.075
Eigenvalues	6.66	4.76	2.11
Variance (%)	39.19	28.05	12.46

Eigenvalues and percentage variance explained by each axis are included below the list of traits (Table 9).

<https://doi.org/10.1371/journal.pone.0219908.t009>

costs (SLA<sup>+</sup>). The trends for DS were similar to those recorded elsewhere in relation to climate [129,130]. Similarly, elongate leaves with a potentially thinner boundary layer [99,131,132] tended to be associated with harsher climates. PCA axis 3 may identify a water-use/succulence dimension. Moreover, site 13, excluded for its extremely high values for LT, LWC and SLWC (Table 3), may perhaps represent an extremely ‘succulent’ outlying population.

Succulence is an ecologically important functional mechanism defined as the ‘storage of utilizable water in living tissues in one or several plant parts in such a way as to allow the plant to be temporarily independent from external water supply but to retain at least some physiological activity’ [133]. However, structural and physiological relationships involving succulence are complex [133–136]. As a result, whether PCA axis 3 identifies ‘succulence’, and provides a temporary drought avoidance mechanism, still requires experimental verification. Nevertheless, whatever the exact functional origins of climate-related PCA axis 3, its recognition was, importantly, only made possible through the inclusion of several traits not customarily included in trait-based ecological studies.

### The way forward—an olive branch in the ‘functional’ versus ‘mechanistic’ debate

Our results, and most of the relationships included in our literature review, point to ‘mechanistic’ traits being diagnostically superior to ‘functional’ ones in climate studies. Nevertheless, we believe it counterproductive to focus entirely on this ‘mechanistic’ superiority. To re-iterate arguments from the Introduction, ‘mechanistic’ studies are time-consuming with small



Table 10. Correlations between climatic indices and (A) traits and (B) coefficient of variation (CV).

	(A) Trait and syndrome values (Pearson <i>r</i> )					(B) CV (Spearman <i>r</i> )				
	MAT	MAP	MTCM	AI	Altitude	MAT	MAP	MTCM	AI	Altitude
<b>TRAITS</b>										
Ecophysiological: <i>n</i> = 18						<i>n</i> = 18				
CHL <sup>l</sup>	-0.058	-0.116	-0.007	-0.112	0.031	0.401	0.346	<b>0.513</b>	<b>0.489</b>	<b>-0.575</b>
DS <sup>s</sup>	<b>-0.549</b>	<b>-0.534</b>	<b>-0.569</b>	<b>-0.495</b>	<b>0.586</b>	0.337	-0.013	0.137	-0.019	-0.321
LWC <sup>s</sup>	0.130	0.346	0.387	0.385	-0.432	0.193	0.053	0.108	-0.126	-0.331
SLWC <sup>s</sup>	0.463	<b>0.500</b>	<b>0.581</b>	<b>0.541</b>	<b>-0.595</b>	0.211	0.183	0.240	0.148	-0.379
LT <sup>s</sup>	0.017	0.031	-0.149	-0.087	0.117	-0.190	-0.148	0.143	0.101	0.015
Morphological: <i>n</i> = 18										
LA <sup>t</sup>	-0.230	0.003	0.019	0.036	-0.053	0.003	-0.127	0.049	-0.077	-0.003
LL <sup>t</sup>	-0.049	0.282	0.367	0.354	-0.333	0.177	-0.049	0.176	0.135	-0.069
LW <sup>l</sup>	-0.311	-0.225	-0.305	-0.260	0.221	-0.120	-0.106	-0.092	-0.170	0.013
LL <sub>max</sub> <sup>t</sup>	0.033	0.069	0.068	0.079	-0.092	0.355	<b>0.503</b>	0.453	0.438	-0.434
LL/LW <sup>t</sup>	-0.306	<b>-0.480</b>	<b>-0.647</b>	<b>-0.581</b>	<b>0.535</b>	0.299	-0.228	0.022	-0.113	0.036
LL/LL <sub>max</sub> <sup>l</sup>	-0.463	-0.298	<b>-0.483</b>	-0.391	0.373	<b>0.485</b>	<b>0.804</b>	<b>0.711</b>	<b>0.701</b>	<b>-0.672</b>
Structural: <i>n</i> = 18										
LWM <sup>t</sup>	0.055	0.263	0.244	0.266	-0.293	0.055	-0.015	0.024	-0.184	-0.139
LDM <sup>t</sup>	-0.047	0.093	-0.018	0.036	-0.033	0.202	-0.022	0.265	0.129	-0.112
SLA <sup>l</sup>	-0.065	-0.081	0.152	0.070	-0.104	0.277	0.298	0.152	0.126	-0.276
LDMC <sup>l</sup>	-0.206	-0.226	<b>-0.477</b>	-0.382	0.428	<b>0.480</b>	0.290	<b>0.476</b>	0.290	<b>-0.620</b>
Whole plant: <i>n</i> = 18										
H	-0.103	0.350	0.358	<b>0.492</b>	-0.274	-0.013	0.067	0.199	0.178	-0.156
DBH	0.007	0.289	0.350	0.420	-0.248	0.114	0.321	0.168	0.239	-0.216
<b>'SYNDROMES'</b>										
C strategy										
C%	0.003	0.243	0.372	0.351	-0.380					
PCA axis1	-0.033	0.158	0.292	0.304	-0.294	0.349	0.240	0.432	0.250	<b>-0.503</b>
axis 2	-0.267	-0.240	<b>-0.521</b>	<b>-0.483</b>	0.401	-0.114	-0.018	-0.170	-0.127	0.036
axis 3	<b>0.687</b>	<b>0.552</b>	<b>0.645</b>	<b>0.523</b>	<b>-0.647</b>	-0.279	-0.236	-0.075	-0.128	0.053

As in Table 1, climatic indices are abbreviated as follows: mean annual temperature, MAT, °C; mean temperature of coldest month, MTCM, °C; mean annual precipitation, MAP, mm; aridity index, AI (MAP/PET where PET identifies potential evapotranspiration, mm).

<https://doi.org/10.1371/journal.pone.0219908.t010>

datasets produced and species chosen primarily for ecological relevance. Without a level of coordination not currently in place between related ‘mechanistic’ investigations, precision of measurement will be offset by few shared species and no integration of findings (i.e. little generality). Trait based ecology, and ‘functional’ traits, can potentially provide this missing generality by producing large ecologically-balanced datasets. However, as in this study, results may require mechanistic clarification. Importantly, as currently implemented, trait-based ecology is methodologically flawed. Specialization routinely occurs at the cellular/biochemical level but may additionally be identified at a higher organizational scale by measuring organs or whole plants. So far, few suitable methodologies are available for the large-scale measurement of traits that can only be identified at the lowest, most fundamental cellular/biochemical level. As a result, the size of plants and their parts, plus SLA and LDMC, which can be measured using whole leaves, stand imprecisely at the centre of meta-analyses in trait-based ecology [12,13]. In contrast, some important ecological specializations expressed primarily at the cellular/biochemical level (e.g. aluminium tolerance in acidic soils and restriction by climate [47,137])

remain outside the scope of these meta-analyses. Moreover, this study only partly redresses this ‘climatic imbalance’. Many additional simply-measured ‘mechanistic’ traits will be required to routinely add a comprehensive climatic dimension to trait-based studies.

Volaire [48] identified ‘functional’ traits as dealing with ecological strategies relating to multi-environmental factors and studied implicitly over long timescales. This is true but, equally, it is the product of methodological constraints rather than an ideological choice. Both the ‘mechanistic’ and ‘functional’ trait approaches have strengths, and weaknesses, but similar goals. In our search to understand and quantify impacts of changing climate on global vegetation composition and ecosystem function, the challenge will be to combine the strengths of both approaches—and to use both types of traits. ‘Mechanistic’ and ‘functional’ traits both contribute to our proposed plant-climate model (Fig 1) and each may be expected to add more generally to our understanding of climate-related processes.

## Supporting information

**S1 Table. Percentage coefficient of variation (CV) for leaf functional traits including minimum ( $CV_{\min}$ ) and maximum values  $CV_{\max}$ .**

(DOCX)

**S2 Table. Correlation matrix for CV values of traits ( $n = 18$ ) with statistically significant relationships in bold.**

(DOCX)

**S3 Table. The combinations of traits and CVs that define ‘syndromes’.**

(DOCX)

## Acknowledgments

We thank members of the International Associated Laboratory—EVOLEA and BioAgrodiversity team members for helpful discussions and comments. We are very grateful to Abdelatif El Ouahrani and Mhammad Hossni for assistance during fieldwork, Emmanuel Paradis and Allowen Evin for the statistical advice. We thank the two anonymous reviewers for the constructive feedback on earlier version of the manuscript.

## Author Contributions

**Conceptualization:** Jalal Kassout, Jean-Frederic Terral, Mohammed Ater.

**Formal analysis:** Jalal Kassout, John G. Hodgson, Mohammed Ater.

**Funding acquisition:** Jean-Frederic Terral, Mohammed Ater.

**Investigation:** Jalal Kassout, Mohammed Ater.

**Methodology:** Jalal Kassout, John G. Hodgson, Mohammed Ater.

**Project administration:** Mohammed Ater.

**Resources:** Jean-Frederic Terral, Mohammed Ater.

**Supervision:** Jean-Frederic Terral, Mohammed Ater.

**Visualization:** Jalal Kassout, John G. Hodgson, Mohammed Ater.

**Writing – original draft:** Jalal Kassout, Jean-Frederic Terral, John G. Hodgson, Mohammed Ater.

Writing – review & editing: Jalal Kassout.

## References

1. Grime JP. Plant strategies, vegetation processes, and ecosystem properties. 2<sup>nd</sup> edition. Wiley. 2001.
2. Pérez-Harguindeguy N, Díaz S, Garnier E, Lavorel S, Poorter H, Jaureguiberry P, et al. New handbook for standardised measurement of plant functional traits worldwide. *Aust J Bot.* 2013; 61: 167. <https://doi.org/10.1071/BT12225>
3. Grime JP. Vegetation classification by reference to strategies. *Nature.* 1974; 250: 26–31. <https://doi.org/10.1038/250026a0>
4. Pierce S, Negreiros D, Cerabolini BEL, Kattge J, Díaz S, Kleyer M, et al. A global method for calculating plant CSR ecological strategies applied across biomes world-wide. *Funct Ecol.* 2017; 31: 444–457. <https://doi.org/10.1111/1365-2435.12722>
5. Wright IJ, Reich PB, Westoby M, Ackerly DD, Baruch Z, Bongers F, et al. The worldwide leaf economics spectrum. *Nature.* 2004; 428: 821–827. <https://doi.org/10.1038/nature02403> PMID: 15103368
6. Shipley B, Lechowicz MJ, Wright I, Reich PB. Fundamental trade-offs generating the worldwide leaf economics spectrum. *Ecology.* 2006; 87: 535–541. <https://doi.org/10.1890/05-1051> PMID: 16602282
7. Evans C. *The Quantitative Analysis of Plant Growth.* University of California Press. 1972.
8. Lambers H, Poorter H. Inherent Variation in Growth Rate Between Higher Plants: A Search for Physiological Causes and Ecological Consequences. *Adv Ecol Res.* 1992; 23: 187–261. [https://doi.org/10.1016/S0065-2504\(08\)60148-8](https://doi.org/10.1016/S0065-2504(08)60148-8)
9. Reich PB, Walters MB, Ellsworth DS. Leaf Life-Span in Relation to Leaf, Plant, and Stand Characteristics among Diverse Ecosystems. *Ecol Monogr.* 1992; 62: 365–392. <https://doi.org/10.2307/2937116>
10. Garnier E, Laurent G. Leaf anatomy, specific mass and water content in congeneric annual and perennial grass species. *New Phytol.* 1994; 128: 725–736. <https://doi.org/10.1111/j.1469-8137.1994.tb04036.x>
11. Grime JP, Thompson K, Hunt R, Hodgson JG, Cornelissen JHC, Hendry GAF, et al. Integrated Screening Validates Primary Axes of Specialisation in Plants. *Oikos.* 1997.
12. Diaz S, Hodgson JG, Thompson K, Cabido M, Cornelissen JHC, Jalili A, et al. The plant traits that drive ecosystems: Evidence from three continents. *J Veg Sci.* 2004; 15: 295–304. <https://doi.org/10.1111/j.1654-1103.2004.tb02266.x>
13. Díaz S, Kattge J, Cornelissen JHC, Wright IJ, Lavorel S, Dray S, et al. The global spectrum of plant form and function. *Nature.* 2016; 529: 167–171. <https://doi.org/10.1038/nature16489> PMID: 26700811
14. Kattge J, Díaz S, Lavorel S, Prentice IC, Leadley P, Bönisch G, et al. TRY—a global database of plant traits. *Glob Chang Biol.* 2011; 17: 2905–2935. <https://doi.org/10.1111/j.1365-2486.2011.02451.x>
15. Freschet GT, Valverde-Barrantes OJ, Tucker CM, Craine JM, McCormack ML, Violle C, et al. Climate, soil and plant functional types as drivers of global fine-root trait variation. *J Ecol.* 2017; 105: 1182–1196. <https://doi.org/10.1111/1365-2745.12769>
16. Albert CH, Thuiller W, Yoccoz NG, Douzet R, Aubert S, Lavorel S. A multi-trait approach reveals the structure and the relative importance of intra- vs. interspecific variability in plant traits. *Funct Ecol.* 2010; 24: 1192–1201. <https://doi.org/10.1111/j.1365-2435.2010.01727.x>
17. Bolnick DI, Amarasekare P, Araújo MS, Bürger R, Levine JM, Novak M, et al. Why intraspecific trait variation matters in community ecology. *Trends Ecol Evol.* 2011; 26: 183–192. <https://doi.org/10.1016/j.tree.2011.01.009> PMID: 21367482
18. Siefert A, Violle C, Chalmandrier L, Albert CH, Taudiere A, Fajardo A, et al. A global meta-analysis of the relative extent of intraspecific trait variation in plant communities. *Ecol Lett.* 2015; 18: 1406–1419. <https://doi.org/10.1111/ele.12508> PMID: 26415616
19. Mitchell RM, Bakker JD. Intraspecific trait variation driven by plasticity and ontogeny in *hypochaeris radicata*. *PLoS One.* 2014; 9. <https://doi.org/10.1371/journal.pone.0109870>
20. Joshi J, Schmid B, Caldeira MC, Dimitrakopoulos PG, Good J, Harris R, et al. Local adaptation enhances performance of common plant species. *Ecol Lett.* 2001; 4: 536–544. <https://doi.org/10.1046/j.1461-0248.2001.00262.x>
21. Fajardo A, Piper FI. Intraspecific trait variation and covariation in a widespread tree species (*Nothofagus pumilio*) in southern Chile. *New Phytol.* 2011; 189: 259–271. <https://doi.org/10.1111/j.1469-8137.2010.03468.x> PMID: 21039558
22. Messier J, McGill BJ, Lechowicz MJ. How do traits vary across ecological scales? A case for trait-based ecology. *Ecol Lett.* 2010; 13: 838–848. <https://doi.org/10.1111/j.1461-0248.2010.01476.x> PMID: 20482582

23. Fajardo A, Siefert A. Phenological variation of leaf functional traits within species. *Oecologia*. 2016; 180: 951–959. <https://doi.org/10.1007/s00442-016-3545-1> PMID: 26796408
24. Poirier M, Durand J-L, Volaire F. Persistence and production of perennial grasses under water deficits and extreme temperatures: importance of intraspecific vs. interspecific variability. *Glob Chang Biol*. 2012; 18: 3632–3646. <https://doi.org/10.1111/j.1365-2486.2012.02800.x>
25. Violle C, Enquist BJ, McGill BJ, Jiang L, Albert CH, Hulshof C, et al. The return of the variance: Intra-specific variability in community ecology. *Trends Ecol Evol*. 2012; 27: 244–252. <https://doi.org/10.1016/j.tree.2011.11.014> PMID: 22244797
26. Buchman N, Cuddington K, Lambrinos J. A historical perspective on ecosystem engineering. 2007.
27. Berke SK. Functional Groups of Ecosystem Engineers: A Proposed Classification with Comments on Current Issues. *Integr Comp Biol*. 2010; 50: 147–157. <https://doi.org/10.1093/icb/icq077> PMID: 21558195
28. Albert CH, Grassein F, Schurr FM, Vieilledent G, Violle C. When and how should intraspecific variability be considered in trait-based plant ecology?. *Perspect Plant Ecol Evol Syst*. 2011; 13: 217–225. <https://doi.org/10.1016/j.ppees.2011.04.003>
29. Laforest-Lapointe I, Martínez-Vilalta J, Retana J. Intraspecific variability in functional traits matters: case study of Scots pine. *Oecologia*. 2014; 175: 1337–1348. <https://doi.org/10.1007/s00442-014-2967-x> PMID: 24850418
30. Moran E V., Hartig F, Bell. Intraspecific trait variation across scales: implications for understanding global change responses. *Glob Chang Biol*. 2016; 22: 137–150. <https://doi.org/10.1111/gcb.13000> PMID: 26061811
31. Shipley B, De Bello F, Cornelissen JHC, Laliberté E, Laughlin DC, Reich PB. Reinforcing loose foundation stones in trait-based plant ecology. *Oecologia*. 2016; 180: 923–931. <https://doi.org/10.1007/s00442-016-3549-x> PMID: 26796410
32. World Meteorological Organization. Report of the International Conference on the Assessment of the Role of Carbon Dioxide and of Other Greenhouse Gases in Climate Variations and Associated Impacts. International Council of Scientific Unions; 1986. Available: [http://library.wmo.int/pmb\\_ged/wmo\\_661\\_en.pdf](http://library.wmo.int/pmb_ged/wmo_661_en.pdf)
33. McDowell NG, Beerling DJ, Breshears DD, Fisher RA, Raffa KF, Stitt M. The interdependence of mechanisms underlying climate-driven vegetation mortality. *Trends Ecol Evol*. 2011; 26: 523–532. <https://doi.org/10.1016/j.tree.2011.06.003> PMID: 21802765
34. Parmesan C, Hanley ME. Plants and climate change: complexities and surprises. *Ann Bot*. 2015; 116: 849–864. <https://doi.org/10.1093/aob/mcv169> PMID: 26555281
35. Fisher RA, Koven CD, Anderegg WRL, Christoffersen BO, Dietze MC, Farris CE, et al. Vegetation demographics in Earth System Models: A review of progress and priorities. *Glob Chang Biol*. 2018; 24: 35–54. <https://doi.org/10.1111/gcb.13910> PMID: 28921829
36. Moles AT, Perkins SE, Laffan SW, Flores-Moreno H, Awasthy M, Tindall ML, et al. Which is a better predictor of plant traits: temperature or precipitation?. *J Veg Sci*. 2014; 25: 1167–1180. <https://doi.org/10.1111/jvs.12190>
37. Madani N, Kimball JS, Ballantyne AP, Affleck DLR, van Bodegom PM, Reich PB, et al. Future global productivity will be affected by plant trait response to climate. *Sci Rep*. 2018; 8: 2870. <https://doi.org/10.1038/s41598-018-21172-9> PMID: 29434266
38. Gates DM. Introduction: Biophysical Ecology. *Pers Bioph Eco*. 1975. 1–28. [https://doi.org/10.1007/978-3-642-87810-7\\_1](https://doi.org/10.1007/978-3-642-87810-7_1)
39. Michaletz ST, Weiser MD, Zhou J, Kaspari M, Helliker BR, Enquist BJ. Plant Thermoregulation: Energetics, Trait–Environment Interactions, and Carbon Economics. *Trends Ecol Evol*. 2015; 30: 714–724. <https://doi.org/10.1016/j.tree.2015.09.006> PMID: 26476814
40. Lambers H, Chapin FS, Pons TL. Plant Water Relations. *Plant Physiological Ecology*. 2008. 163–223. [https://doi.org/10.1007/978-0-387-78341-3\\_5](https://doi.org/10.1007/978-0-387-78341-3_5)
41. Sack L, Ball MC, Brodersen C, Davis SD, Des Marais DL, Donovan LA, et al. Plant hydraulics as a central hub integrating plant and ecosystem function: meeting report for “Emerging Frontiers in Plant Hydraulics”. *Plant Cell Environ*. 2016; 39: 2085–2094. <https://doi.org/10.1111/pce.12732> PMID: 27037757
42. Larter M, Pfautsch S, Domec J-C, Trueba S, Nagalingum N, Delzon S. Aridity drove the evolution of extreme embolism resistance and the radiation of conifer genus *Callitris*. *New Phytol*. 2017; 215: 97–112. <https://doi.org/10.1111/nph.14545> PMID: 28378882
43. Hochberg U, Rockwell FE, Holbrook NM, Cochard H. Iso/Anisohydry: A Plant–Environment Interaction Rather Than a Simple Hydraulic Trait. *Trends Plant Sci*. 2018; 23: 112–120. <https://doi.org/10.1016/j.tplants.2017.11.002> PMID: 29223922

44. Klein T, Zeppel MJB, Anderegg WRL, Bloemen J, De Kauwe MG, Hudson P, et al. Xylem embolism refilling and resilience against drought-induced mortality in woody plants: processes and trade-offs. *Ecol Res*. 2018; <https://doi.org/10.1007/s11284-017-1510-z>
45. Nicotra A, Babicka N, Westoby M. Seedling root anatomy and morphology: an examination of ecological differentiation with rainfall using phylogenetically independent contrasts. *Oecologia*. 2002; 130: 136–145. <https://doi.org/10.1007/s004420100788> PMID: 28547018
46. Padilla FM, Pugnaire FI. Rooting depth and soil moisture control Mediterranean woody seedling survival during drought. *Funct Ecol*. 2007; 21: 489–495. <https://doi.org/10.1111/j.1365-2435.2007.01267.x>
47. Brodribb TJ. Progressing from “functional” to mechanistic traits. *New Phytol*. 2017; 215: 9–11. <https://doi.org/10.1111/nph.14620> PMID: 28560790
48. Voltaire F. A unified framework of plant adaptive strategies to drought: Crossing scales and disciplines. *Glob Chang Biol*. 2018; 24: 2929–2938. <https://doi.org/10.1111/gcb.14062> PMID: 29350812
49. Grime JP, Hodgson J, Hunt R. Comparative plant ecology: a functional approach to common British species. Castlepoint Press. 2007.
50. Ghallab A. Modélisation de la distribution potentielle actuelle des espèces forestières majeures dans le Rif occidental et prédiction de l'impact du changement climatique. Université Abdelmalek Essaâdi, Tétouan, Maroc. 2018.
51. Vogiatzakis IN, Mannion AM, Griffiths GH. Mediterranean ecosystems: problems and tools for conservation. *Prog Phys Geogr Earth Environ*. 2006; 30: 175–200. <https://doi.org/10.1191/0309133306pp472ra>
52. Hickler T, Vohland K, Feehan J, Miller PA, Smith B, Costa L, et al. Projecting the future distribution of European potential natural vegetation zones with a generalized, tree species-based dynamic vegetation model. *Glob Ecol Biogeogr*. 2012; 21: 50–63. <https://doi.org/10.1111/j.1466-8238.2010.00613.x>
53. Vautard R, Gobiet A, Sobolowski S, Kjellström E, Stegehuis A, Watkiss P, et al. The European climate under a 2 °C global warming. *Environ Res Lett*. 2014; 9: 34006. <https://doi.org/10.1088/1748-9326/9/3/034006>
54. Besnard G, Terral J-F, Cornille A. On the origins and domestication of the olive: a review and perspectives. *Ann Bot*. 2017; 121: 587–588. <https://doi.org/10.1093/aob/mcy002>
55. Ionesco T, Sauvage C. Fichier des espèces climax. *Al Awamia*. 1969; 105–124.
56. Lewington A, Parker. Ancient trees: trees that live for a thousand years. Batsford. 1999.
57. Riley FR. Olive oil production on bronze age Crete: nutritional properties, processing methods and storage life of Minoan olive oil. *Oxford J Archaeol*. 2002; 21: 63–75. <https://doi.org/10.1111/1468-0092.00149>
58. Rhizopoulou S. *Olea europaea* L. A Botanical Contribution to Culture. *Am J Agric Environ Sci*. 2007; 2: 382–387. citeulike-article-id:13594170
59. Arnan X, López BC, Martínez-Vilalta J, Estorach M, Poyatos R. The age of monumental olive trees (*Olea europaea*) in northeastern Spain. *Dendrochronologia*. 2012; 30: 11–14. <https://doi.org/10.1016/J.DENDRO.2011.02.002>
60. Pons A, Quézel P. The history of the flora and vegetation and past and present human disturbance in the Mediterranean region. *Plant Conserv Mediterr area*. 1985; 25–43.
61. Carrión Y, Ntinou M, Badal E. *Olea europaea* L. in the North Mediterranean Basin during the Pleniglacial and the Early–Middle Holocene. *Quat Sci Rev*. 2010; 29: 952–968. <https://doi.org/10.1016/J.QUASCIREV.2009.12.015>
62. Carrión JS, Dupré M, Fumanal MP, Montes R. A Palaeoenvironmental Study in Semi-arid Southeastern Spain: the Palynological and Sedimentological Sequence at Pernerias Cave (Lorca, Murcia). *J Archaeol Sci*. 1995; 22: 355–367. <https://doi.org/10.1006/JASC.1995.0037>
63. Terral J-F, Alonso N, Capdevila RB i, Chatti N, Fabre L, Fiorentino G, et al. Historical biogeography of olive domestication (*Olea europaea* L.) as revealed by geometrical morphometry applied to biological and archaeological material. *J Biogeogr*. 2004; 31: 63–77. <https://doi.org/10.1046/j.0305-0270.2003.01019.x>
64. Ozenda P. Sur les étages de végétation dans les montagnes du bassin méditerranéen. *Doc Cartogr écologique*. 1975; XVI: 1–32.
65. Rivas-Martínez S. Memoria del mapa de series de vegetación de España 1:400.000. 1987. Available: <http://www.jolube.es/pdf/RM1987.htm>
66. Rubio De Casas R, Balaguer L, Manrique E, Pérez ME, Vargas P. On the historical presence of the wild olives *Olea europaea* L. var. *sylvestris* (Miller) Leh. In the Eurosiberian North of the Iberian Peninsula. *An del Jardín Botánico Madrid*. 2002.

67. Blondel J, Aronson J, Bodiou J-Y, Boeuf G. The Mediterranean region: biological diversity in space and time. Oxford University Press. 2010.
68. Emberger L. Aperçu général sur la végétation du Maroc: commentaire de la carte phytogéographique du Maroc 1:1.500.000. Veröff. geobot. Inst. 1939.
69. Benabid A. Etude phytocéologique des peuplements forestiers et préforestiers du Rif centro-occidental (Maroc). Institut scientifique, Université Mohammed V. 1984. Available: <http://www.worldcat.org/title/etude-phytoecologique-des-peuplements-forestiers-et-preforestiers-du-rif-centro-occidental-maroc/oclc/492224805>
70. Benabid A. Les écosystèmes forestiers préforestiers et présteppiques du Maroc: diversité, répartition biogéographique et problèmes posés par leur aménagement. For Méditerranéenne. 1985; VII: 53–64.
71. Benabid A, Fennane M. Connaissances sur la végétation du Maroc: Phytogéographie, phytosociologie et séries de végétation. Lazaroa. 1994; 14: 21–97.
72. Emberger L. Carte phytogéographique du Maroc. Masson et Cie. 1971.
73. Barbéro M, Quézel P, Rivas-Martínez S. Contribution à l'étude des groupements forestiers et préforestiers du Maroc. Phytocoenologia. 1981; 311–412. <https://doi.org/10.1127/PHYTO/9/1981/311>
74. Fick S, Hijmans R. WorldClim 2: new 1-km spatial resolution climate surfaces for global land areas. Int J Climatol. 2017; 37: 4302–4315. <https://doi.org/10.1002/joc.5086>
75. Zomer RJ, Bossio DA, Trabucco A, Yuanjie L, Gupta DC, Singh VP. Trees and Water: Smallholder Agroforestry on Irrigated Lands in Northern India. IWMI Research Report 122. 2007. <https://doi.org/10.1016/j.agee.2008.01.014>
76. Zomer RJ, Trabucco A, Bossio DA, Verchot L V. Climate change mitigation: A spatial analysis of global land suitability for clean development mechanism afforestation and reforestation. Agric Ecosyst Environ. 2008; 126: 67–80. <https://doi.org/10.1016/j.agee.2008.01.014>
77. Gibelin A-L, Déqué M. Anthropogenic climate change over the Mediterranean region simulated by a global variable resolution model. Clim Dyn. 2003; 20: 327–339. <https://doi.org/10.1007/s00382-002-0277-1>
78. Polade SD, Pierce DW, Cayan DR, Gershunov A, Dettinger MD. The key role of dry days in changing regional climate and precipitation regimes. Sci Rep. 2014; 4: 4364. <https://doi.org/10.1038/srep04364> PMID: 24621567
79. Quantum Gis Development Team. Système d'Information Géographique Libre et Open Source. 2015. Available: <https://www.qgis.org/fr>
80. Fennane M. Phytosociologie des tétracliniaies marocaines. Bull l'Institut Sci Rabat. 1988; 12: 99–148.
81. Bonham CD. Measurements for Terrestrial Vegetation Measurements. 2013. <https://doi.org/10.1002/9781118534540>
82. Cornelissen JHC, Lavorel S, Garnier E, Díaz S, Buchmann N, Gurrich DE, et al. A handbook of protocols for standardised and easy measurements of plant functional traits worldwide. Aust. J. Bot. 2003; 51: 335–380. <https://doi.org/10.1071/BT02124>
83. Zgallaï H, Steppe K, Lemeur R. Étude des caractères morphologiques des plantes de tomate soumises à un déficit hydrique en milieu hydroponique. Sci Chang planétaires / Sécheresse. 2007; 18: 57–64. <https://doi.org/10.1684/SEC.2007.0069>
84. Wang R, Yu G, He N, Wang Q, Xia F, Zhao N, et al. Elevation-Related Variation in Leaf Stomatal Traits as a Function of Plant Functional Type: Evidence from Changbai Mountain, China. PLoS One. 2014; 9: e115395. <https://doi.org/10.1371/journal.pone.0115395> PMID: 25517967
85. Hulshof CM, Swenson NG. Variation in leaf functional trait values within and across individuals and species: an example from a Costa Rican dry forest. Funct Ecol. 2010; 24: 217–223. <https://doi.org/10.1111/j.1365-2435.2009.01614.x>
86. Nicotra AB, Cosgrove MJ, Cowling A, Schlichting CD, Jones CS. Leaf shape linked to photosynthetic rates and temperature optima in South African Pelargonium species. Oecologia. 2008; 154: 625–635. <https://doi.org/10.1007/s00442-007-0865-1> PMID: 17943318
87. Nicotra AB, Leigh A, Boyce CK, Jones CS, Niklas KJ, Royer DL, et al. The evolution and functional significance of leaf shape in the angiosperms. Funct Plant Biol. 2011; 38: 535–552. <https://doi.org/10.1071/FP11057>
88. Poorter L, Bongers F. Leaf traits are good predictors of plant performance across 53 rain forest species. Ecology. Ecological Society of America. 2006; 87: 1733–1743. [https://doi.org/10.1890/0012-9658\(2006\)87\[1733:LTAGPO\]2.0.CO;2](https://doi.org/10.1890/0012-9658(2006)87[1733:LTAGPO]2.0.CO;2)
89. Hetherington AM, Woodward FI. The role of stomata in sensing and driving environmental change. Nature. 2003; 424: 901–908. <https://doi.org/10.1038/nature01843> PMID: 12931178

90. Chaves MM, Maroco JP, Pereira JS. Understanding plant responses to drought—From genes to the whole plant. *Funct Plant Biol.* 2003; 30: 239–264. <https://doi.org/10.1071/FP02076>
91. Franks PJ, Drake PL, Beerling DJ. Plasticity in maximum stomatal conductance constrained by negative correlation between stomatal size and density: an analysis using *Eucalyptus globulus*. *Plant Cell Environ.* 2009; 32: 1737–1748. <https://doi.org/10.1111/j.1365-3040.2009.02031.x> PMID: 19682293
92. Russo SE, Cannon WL, Elowsky C, Tan S, Davies SJ. Variation in leaf stomatal traits of 28 tree species in relation to gas exchange along an edaphic gradient in a Bornean rain forest. *Am J Bot.* 2010; 97: 1109–1120. <https://doi.org/10.3732/ajb.0900344> PMID: 21616863
93. Givnish T. On the Adaptive Significance of Leaf Form. *Topics in Plant Population Biology.* 1979. [https://doi.org/10.1007/978-1-349-04627-0\\_17](https://doi.org/10.1007/978-1-349-04627-0_17)
94. Reich PB, Walters MB, Ellsworth DS, Vose JM, Volin JC, Gresham C, et al. Relationships of leaf dark respiration to leaf nitrogen, specific leaf area and leaf life-span: a test across biomes and functional groups. *Oecologia.* 1998; 114: 471–482. <https://doi.org/10.1007/s004420050471> PMID: 28307896
95. Vile D, Garnier É, Shipley B, Laurent G, Navas M-L, Roumet C, et al. Specific Leaf Area and Dry Matter Content Estimate Thickness in Laminar Leaves. *Ann Bot.* 2005; 96: 1129–1136. <https://doi.org/10.1093/aob/mci264> PMID: 16159941
96. Witkowski ETF, Lamont BB. Leaf specific mass confounds leaf density and thickness. *Oecologia.* 1991; 88: 486–493. <https://doi.org/10.1007/BF00317710> PMID: 28312617
97. Givnish T. Comparative studies of leaf form: assessing the relative roles of selective pressures and phylogenetic constraints. *New Phytol.* 1987; 106: 131–160. <https://doi.org/10.1111/j.1469-8137.1987.tb04687.x>
98. McDonald PG, Fonseca CR, Overton JM, Westoby M. Leaf-size divergence along rainfall and soil-nutrient gradients: is the method of size reduction common among clades?. *Funct Ecol.* 2003; 17: 50–57. <https://doi.org/10.1046/j.1365-2435.2003.00698.x>
99. Yates MJ, Anthony Verboom G, Rebelo AG, Cramer MD. Ecophysiological significance of leaf size variation in Proteaceae from the Cape Floristic Region. *Funct Ecol.* 2010; 24: 485–492. <https://doi.org/10.1111/j.1365-2435.2009.01678.x>
100. Givnish TJ. Leaf and Canopy Adaptations in Tropical Forests. 1984. [https://doi.org/10.1007/978-94-009-7299-5\\_6](https://doi.org/10.1007/978-94-009-7299-5_6)
101. Fonseca CR, Overton JM, Collins B, Westoby M. Shifts in trait combinations along rainfall and phosphorus gradients. *J Ecol.* 2000; 88: 964–977. <https://doi.org/10.1046/j.1365-2745.2000.00506.x>
102. Wilson PJ, Thompson K, Hodgson JG. Specific leaf area and leaf dry matter content as alternative predictors of plant strategies. *New Phytol.* 1999; 143: 155–162. <https://doi.org/10.1046/j.1469-8137.1999.00427.x>
103. Roche P, Díaz-burlinson N, Gachet S. Congruency Analysis of Species Ranking Based on Leaf Traits: Which Traits Are the More Reliable?. *Plant Ecol.* 2004; 174: 37–48.
104. Garnier E, Laurent G, Bellmann A, Debain S, Berthelot P, Ducout B, et al. Consistency of species ranking based on functional leaf traits. *New Phytol.* 2001; 152: 69–83. <https://doi.org/10.1046/j.0028-646x.2001.00239.x>
105. Westoby M, Falster DS, Moles AT, Vesk PA, Wright IJ. Plant Ecological Strategies: Some Leading Dimensions of Variation Between Species. *Annu Rev Ecol Syst.* 2002; 33: 125–159. <https://doi.org/10.1146/annurev.ecolsys.33.010802.150452>
106. Reich P, Ellsworth D, Walters MB, Vose JM, Charles GM, Volin JC, et al. Generality of Leaf Trait Relationships: a Test Across Six Biomes. *Ecology.* 1999; 80: 1955–1969.
107. Westoby M. A leaf-height-seed (LHS) plant ecology strategy scheme. *Plant Soil.* 1998; 199: 213–227. <https://doi.org/10.1023/A:1004327224729>
108. Poorter H, Niinemets Ü, Poorter L, Wright IJ, Villar R, Niinemets U, et al. Causes and consequences of variation in leaf mass per area (LMA): a meta-analysis. *New Phytol.* 2009; 182: 565–588. <https://doi.org/10.1111/j.1469-8137.2009.02830.x> PMID: 19434804
109. Iida Y, Poorter L, Sterck F, Kassim AR, Potts MD, Kubo T, et al. Linking size-dependent growth and mortality with architectural traits across 145 co-occurring tropical tree species. *Ecology.* 2014; 95: 353–363. <https://doi.org/10.1890/11-2173.1> PMID: 24669729
110. R Development Core Team. R: The R Project for Statistical Computing. 2015. Available: <https://www.r-project.org/>
111. Sokal RR, Braumann CA. Significance Tests for Coefficients of Variation and Variability Profiles. *Syst Zool.* 1980; 29: 50. <https://doi.org/10.2307/2412626>
112. Lemke IH, Kolb A, Diekmann MR. Region and site conditions affect phenotypic trait variation in five forest herbs. *Acta Oecologica.* 2012; 39: 18–24. <https://doi.org/10.1016/J.ACTAO.2011.11.001>

113. Wellstein C, Chelli S, Campetella G, Bartha S, Galiè M, Spada F, et al. Intraspecific phenotypic variability of plant functional traits in contrasting mountain grasslands habitats. *Biodivers Conserv*. 2013; 22: 2353–2374. <https://doi.org/10.1007/s10531-013-0484-6>
114. Meerts P. Plasticité phénotypique et différenciation génotypique chez *Polygonum aviculare* L. Interprétation évolutive et adaptative. Université Libre de Bruxelles, Belgique. 1990.
115. Paradis E, Claude J, Strimmer K. APE: Analyses of Phylogenetics and Evolution in R language. *Bioinformatics*. 2004; 20: 289–290. <https://doi.org/10.1093/bioinformatics/btg412> PMID: 14734327
116. Sneath PHA, Sokal RR. Numerical taxonomy. The principles and practice of numerical classification. *Syst Zology*. 1973. <https://doi.org/10.2307/2412767>
117. Schlichting CD, Levin DA. Phenotypic plasticity: an evolving plant character. *Biol J Linn Soc*. 1986; 29: 37–47. <https://doi.org/10.1111/j.1095-8312.1986.tb01769.x>
118. Schlichting CD, Levin DA. Phenotypic Plasticity in Phlox. I. Wild and Cultivated Populations of *P. drummondii*. *Am J Bot*. 1988; 75: 161. <https://doi.org/10.2307/2443883>
119. Lavorel S, McIntyre S, Landsberg J, Forbes TDA. Plant functional classifications: From general groups to specific groups based on response to disturbance. *Trends Ecol Evol*. 1997; 12: 474–478. [https://doi.org/10.1016/S0169-5347\(97\)01219-6](https://doi.org/10.1016/S0169-5347(97)01219-6) PMID: 21238163
120. Garnier E, Navas M-L. A trait-based approach to comparative functional plant ecology: concepts, methods and applications for agroecology. A review. *Agron Sustain Dev*. 2012; 32: 365–399. <https://doi.org/10.1007/s13593-011-0036-y>
121. Lumaret R, Ouazzani N. Plant genetics: Ancient wild olives in Mediterranean forests. *Nature*. 2001; 413: 700–700. <https://doi.org/10.1038/35099680> PMID: 11607022
122. Belaj A, León L, Satovic Z, De la Rosa R. Variability of wild olives (*Olea europaea* subsp. *europaea* var. *sylvestris*) analyzed by agro-morphological traits and SSR markers. *Sci Hortic*. 2011; 129: 561–569. <https://doi.org/10.1016/j.scienta.2011.04.025>
123. Besnard G, El Bakkali A, Haouane H, Baali-Cherif D, Moukhli A, Khadari B. Population genetics of Mediterranean and Saharan olives: geographic patterns of differentiation and evidence for early generations of admixture. *Ann Bot*. 2013; 112: 1293–1302. <https://doi.org/10.1093/aob/mct196> PMID: 24013386
124. Díez CM, Trujillo I, Martínez-Urdiroz N, Barranco D, Rallo L, Marfil P, et al. Olive domestication and diversification in the Mediterranean Basin. *New Phytol*. 2015; 206: 436–447. <https://doi.org/10.1111/nph.13181> PMID: 25420413
125. Díez CM, Moral J, Barranco D, Rallo L. Genetic Diversity and Conservation of Olive. *Genetic Resources*. 2016. pp. 337–356. [https://doi.org/10.1007/978-3-319-25954-3\\_10](https://doi.org/10.1007/978-3-319-25954-3_10)
126. Barazani O, Keren-Keiserman A, Westberg E, Hanin N, Dag A, Ben-Ari G, et al. Genetic variation of naturally growing olive trees in Israel: From abandoned groves to feral and wild? *BMC Plant Biol*. 2016; 16. <https://doi.org/10.1186/s12870-016-0947-5>
127. Aksehirli-Pakyurek M, Koubouris GC, Petrakis P V., Hepaksoy S, Metzidakis IT, Yalcinkaya E, et al. Cultivated and Wild Olives in Crete, Greece—Genetic Diversity and Relationships with Major Turkish Cultivars Revealed by SSR Markers. *Plant Mol Biol Report*. 2017; 35: 575–585. <https://doi.org/10.1007/s11105-017-1046-y>
128. Geber MA, Griffen LR. Inheritance and Natural Selection on Functional Traits. *Int J Plant Sci*. 2003; 164: S21–S42. <https://doi.org/10.1086/368233>
129. Wang R, Huang W, Chen L, Ma L, Guo C, Liu X. Anatomical and physiological plasticity in *Leymus chinensis* (Poaceae) along large-scale longitudinal gradient in northeast China. *PLoS One*. 2011; 6. <https://doi.org/10.1371/journal.pone.0026209>
130. Wang R, Yu G, He N, Wang Q, Zhao N, Xu Z, et al. Latitudinal variation of leaf stomatal traits from species to community level in forests: linkage with ecosystem productivity. *Sci Rep*. 2015; 5: 14454. <https://doi.org/10.1038/srep14454> PMID: 26403303
131. Schuepp PH. Tansley Review No. 59 Leaf boundary layers. *New Phytol. J*. 1993; 125: 477–507. <https://doi.org/10.1111/j.1469-8137.1993.tb03898.x>
132. Tozer WC, Rice B, Westoby M. Evolutionary divergence of leaf width and its correlates. *Am J Bot*. 2015; 102: 367–378. <https://doi.org/10.3732/ajb.1400379> PMID: 25784470
133. Eggli U, Nyffeler R. Living under temporarily arid conditions—succulence as an adaptive strategy. *British Cactus and Succulent Society*. 2009; 27: 13–36. <https://doi.org/10.25223/brad.n27.2009.a10>
134. Vendramini F, Díaz S, Gurvich DE, Wilson PJ, Thompson K, Hodgson JG. Leaf traits as indicators of resource-use strategy in floras with succulent species. *New Phytol*. 2002; 154: 147–157. <https://doi.org/10.1046/j.1469-8137.2002.00357.x>



135. Ogburn RM, Edwards EJ. The Ecological Water-Use Strategies of Succulent Plants. *Adv Bot Res.* 2010; 55: 179–225. <https://doi.org/10.1016/B978-0-12-380868-4.00004-1>
136. Males J. Secrets of succulence. *J Exp Bot.* 2017; 68: 2121–2134. <https://doi.org/10.1093/jxb/erx096> PMID: [28369497](https://pubmed.ncbi.nlm.nih.gov/28369497/)
137. Abedi M, Bartelheimer M, Poschod P. Aluminium toxic effects on seedling root survival affect plant composition along soil reaction gradients—a case study in dry sandy grasslands. *J Veg Sci. J.* 2013; 24: 1074–1085. <https://doi.org/10.1111/jvs.12016>