

The core effector Cce1 is required for early infection of maize by *Ustilago maydis*

DENISE SEITNER¹, SIMON UHSE¹, MICHELLE GALLEI^{1,2} AND ARMIN DJAMEI^{1,*}

¹Gregor Mendel Institute (GMI), Austrian Academy of Sciences (OEAW), Vienna BioCenter (VBC), Vienna, 1030, Austria

²Institute of Science and Technology Austria, Klosterneuburg, 3400, Austria

SUMMARY

The biotrophic pathogen *Ustilago maydis*, the causative agent of corn smut disease, infects one of the most important crops worldwide – *Zea mays*. To successfully colonize its host, *U. maydis* secretes proteins, known as effectors, that suppress plant defense responses and facilitate the establishment of biotrophy. In this work, we describe the *U. maydis* effector protein Cce1. Cce1 is essential for virulence and is upregulated during infection. Through microscopic analysis and *in vitro* assays, we show that Cce1 is secreted from hyphae during filamentous growth of the fungus. Strikingly, $\Delta cce1$ mutants are blocked at early stages of infection and induce callose deposition as a plant defense response. Cce1 is highly conserved among smut fungi and the *Ustilago bromivora* ortholog complemented the virulence defect of the SG200 $\Delta cce1$ deletion strain. These data indicate that Cce1 is a core effector with apoplastic localization that is essential for *U. maydis* to infect its host.

Keywords: biotrophic interaction, effector, filamentous fungus, plant pathogen, *Ustilago maydis*, virulence factor, *Zea mays*.

INTRODUCTION

The primary goal of plant pathogenic fungi is to proliferate using the host as a source of nutrients, shelter, and a structure from which to distribute spores. Biotrophic fungi depend on a living host, which has led to the evolution of sophisticated strategies for suppressing host defense and redirecting its metabolic flux. The gall inducing, biotrophic fungus *Ustilago maydis* grows with intra- and extracellular hyphae after appressoria-mediated penetration of the maize epidermis. The intracellular hyphae are encased by the host membrane, forming the biotrophic interface where the exchange of nutrients as well as defense and defense suppression molecules occurs (Brefort *et al.*, 2009; Jones and Dangl, 2006).

To establish biotrophy, *U. maydis* needs to overcome the multilayered defense system of its host, *Z. mays*. PAMP (Pathogen associated molecular pattern)-triggered immunity

(PTI) responses are activated if the pathogen is unable to avoid recognition. The maize response includes apoplastic H₂O₂ production, directed secretion of papilla material like callose to block fungal penetration, and induction of defense genes (Cook *et al.*, 2015; Oliveira-Garcia and Deising, 2016).

Defense suppression is achieved by deploying a subset of secreted molecules, termed effectors, from the fungal hyphae (Sperschneider *et al.*, 2016). Effector proteins secreted through the conventional pathway via the endoplasmic reticulum and the Golgi apparatus are either localized to the biotrophic interphase (apoplastic effectors) or can be translocated into the plant cell (symplastic effectors) (Lo Presti *et al.*, 2015). Apoplastic effectors have been shown to inhibit extracellular host enzymes, chelate PAMPs to reduce the possibility of host recognition, and degrade host cell walls (de Jonge *et al.*, 2011; Win *et al.*, 2012).

Criteria frequently used for effector prediction are the presence of a secretion signal, upregulation of expression upon host colonization, and a maximum protein size of 300 amino acids (Lo Presti *et al.*, 2015). Furthermore, most effectors lack conserved functional domains as well as orthologs outside the genus (Win *et al.*, 2012). Many effector proteins are cysteine-rich and presumably able to form disulfide bonds to stabilize their tertiary structure in the harsh oxidative conditions of the plant apoplast (Lanver *et al.*, 2017; Win *et al.*, 2012).

In *U. maydis*, there are 467 putative proteins that are predicted to be secreted. Of these, 43% lack recognizable domains and are expected to play an important role in host colonization (Schuster *et al.*, 2017). These potential effectors are often encoded in one of twelve effector gene clusters (Kämper *et al.*, 2006). Interestingly, individual cluster mutants are affected at distinct developmental steps of biotrophy, therefore the effectors are likely to have separate cellular targets (Brefort *et al.*, 2009; Kämper *et al.*, 2006). In many cases, however, deletion of a single effector or even a whole cluster does not affect *U. maydis* virulence, presumably due to functional redundancy. *U. maydis* also contains core effectors, which are highly conserved among smut fungi and are likely to play a crucial role in the infection process (Lanver *et al.*, 2017).

Only a few individual effectors of *U. maydis* have been functionally characterized. The apoplastic effector Pit2 (Protein

*Correspondence: Email: armin.djamei@gmi.oeaw.ac.at

involved in tumours 2) inhibits a set of apoplastic maize cysteine proteases, thereby suppressing plant defense responses (Mueller *et al.*, 2013). The core effector Pep1 (Protein essential for penetration 1) also acts in the apoplast and targets a maize-derived peroxidase, inhibiting the accumulation of H₂O₂ released from the plant as a defense response at the site of penetration (Doehlemann *et al.*, 2009). An example of a translocated effector is the chorismate mutase Cmu1. This cytoplasmic effector reduces the levels of chorismate, a precursor of the plant defense hormone salicylic acid (Djamei *et al.*, 2011). Tin2 (Tumour inducing 2) also translocates into the plant cell where it enhances the production of anthocyanin to redirect precursors away from lignin biosynthesis (Tanaka *et al.*, 2014). See1 (Seedling efficient effector 1) was the first organ-specific effector characterized and it reactivates plant DNA synthesis during leaf gall progression (Redkar *et al.*, 2015). The virulence factor ApB73 is crucial for the establishment of biotrophy but its mode of action is not yet understood (Stirnberg and Djamei, 2016).

Here, we characterize Cce1 (Cysteine-rich core effector 1), a cysteine-rich core effector of *U. maydis*. Cce1 is upregulated during the biotrophic stage, secreted from the fungus, highly conserved on the sequence level in other smut fungi, and indispensable at the onset of infection.

RESULTS

Identification of Cce1

Although many putative effectors have been previously found in clusters in the *U. maydis* genome, we focused on highly conserved genes encoding putative effectors outside of these clusters. Here we identified the *cce1* gene (UMAG_12197) located on chromosome 7 of *U. maydis*. The gene located upstream of *cce1* is predicted to be related to the B56-delta regulatory subunit of protein phosphatase 2A, and the downstream neighboring gene is related to SGS1 (Slow Growth Suppressor 1), encoding a DNA helicase. The *cce1* gene itself contains one intron (position 240 to 326) and encodes a protein of 129 amino acids. The Cce1 protein was predicted to be secreted by SignalP (Petersen *et al.*, 2011), with the putative N-terminal secretion signal expected to be cleaved after 23 amino acids. Besides the secretion signal, no known protein domains are found within Cce1. The mature protein contains eight cysteines, resulting in four possible disulfide bonds that could stabilize the protein in the harsh conditions of the apoplast after secretion (Fig. 1A). Prediction of apoplastic localization was tested using ApoplastP (Sperschneider *et al.*, 2017), which showed that Cce1 has a 57% probability of being localized to the apoplast (Table 1).

Effector genes are strongly upregulated in transcripts from biotrophic stages compared to transcripts from axenically grown cultures (Skibbe *et al.*, 2010). We performed quantitative real-time PCR (qRT-PCR) analysis and found that *cce1* is

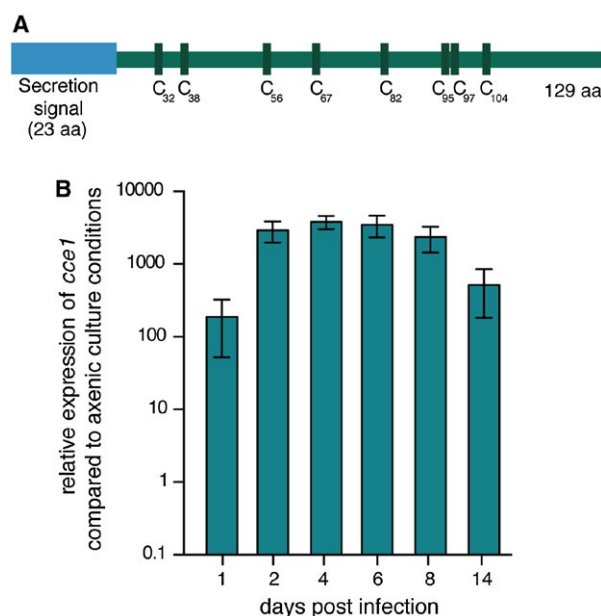


Fig. 1 Cce1 protein structure and its transcriptional regulation during biotrophy. (A) Schematic representation of Cce1. The 129 amino acid protein consists of a putative N-terminal secretion signal (amino acid 1-23) and eight cysteine residues in the center (C32, 38, 56, 67, 82, 95, 97, 104). (B) Transcript levels of *cce1* measured at different time points during biotrophic development of FB1/FB2 strains infecting *Z. mays*. Expression levels were normalized to the constitutive gene *peptidyl-prolyl isomerase (ppi)*. Three biological replicates were analyzed, error bars indicate standard deviation. [Colour figure can be viewed at wileyonlinelibrary.com]

transcriptionally upregulated more than 3000-fold during biotrophy, indicating that Cce1 is required during the biotrophic growth phase of the fungus (Fig. 1B).

Cce1 is required for virulence of *U. maydis*

To determine whether deletion of *cce1* had an impact on virulence of *U. maydis*, seven-day old *Z. mays* seedlings (cultivar EGB) were infected with either an SG200 *cce1* deletion strain (SG200Δ*cce1*), the solopathogenic progenitor strain SG200, or the ectopic complementation strain SG200Δ*cce1*-*cce1*-3xHA. Scoring of disease symptoms showed that the *cce1* deletion strain is no longer able to induce symptoms beyond weak chlorosis, possibly due to local hypersensitive responses restricting the pathogen. Ectopic complementation partially restored the virulence phenotype, including gall induction (Fig. 2A).

To investigate if Cce1 is needed for growth of *U. maydis*, the mutant strains were tested for their ability to form filaments, a pre-requisite for infection, as well as growth under different conditions including nutrient deprivation, and oxidative, salt, and cell wall stress (Supporting Information Fig. S1). We did not observe any growth differences between SG200, SG200Δ*cce1*, and SG200Δ*cce1*-*cce1*-3xHA, indicating that Cce1 is specifically needed during the biotrophic phase of *U. maydis*.

Table 1 Secretion prediction, apoplasmic localisation prediction and identity to Cce1 of Cce1 orthologs.

Organism	Gene ID	Secretion prediction	Predicted secretion signal cleavage site	Apoplastic localisation prediction	Identity to Cce1	Similarity to Cce1
<i>U. maydis</i>	UMAG_12197	Yes	VRA-AT	Yes (57%)		
<i>U. hordei</i>	UHOR_04531	Yes	VEA-KT	Yes (64%)	59%	67%
<i>U. bromivora</i>	UBRO_04531	Yes	VEA-GT	Yes (65%)	59%	66%
<i>S. scitamineum</i>	SPSC_06609	Yes	VEA-AT	No (51%)	65%	74%
<i>S. reilianum</i>	sr13927	Yes	VEA-KT	Yes (84%)	61%	71%
<i>M. antarcticus</i>	PANO_010d4106	Yes	VVA-ST	Yes (74%)	60%	74%

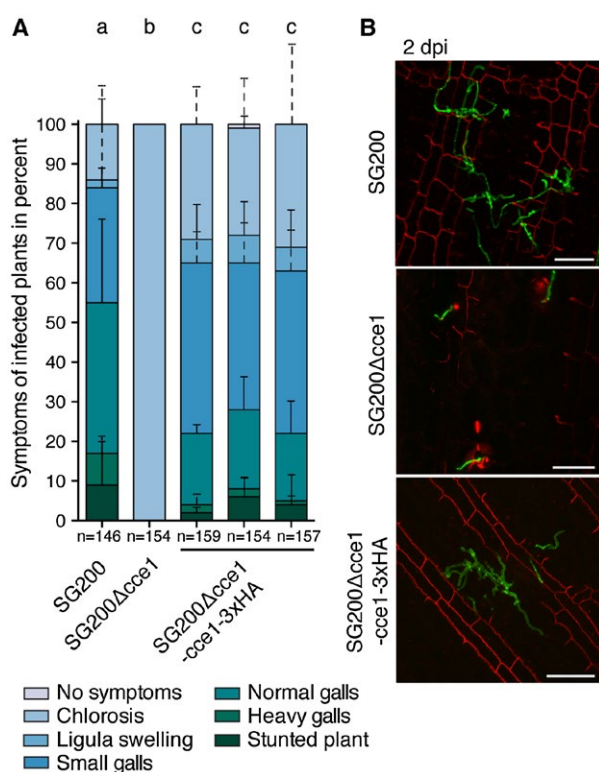


Fig. 2 Symptom rating and *in planta* growth of *U. maydis* hyphae. (A) Symptom rating of the *U. maydis* strain SG200Δcce1 in comparison to the progenitor strain SG200 and three individual SG200Δcce1-cce1-3xHA complementation strains 12 days post infection (dpi). Mean and standard deviation of relative counts from four replicates are displayed. For clarity, only positive error bars are shown. n = number of plants scored. Significant differences between the strains are indicated by a, b, c. p-values calculated by Fisher's exact test, MTC by Benjamini-Hochberg algorithm, $\alpha = 0.05$. (B) Seven-day-old *Z. mays* seedlings were infected with *U. maydis* strains, leaves were harvested two days post infection (dpi). Fungal hyphae were visualized by WGA-AF488 (green), plant cell walls stained with propidium iodide, and observed via confocal microscopy. Maximum projections of Z-stacks are shown; scale bar = 50 μm. [Colour figure can be viewed at wileyonlinelibrary.com]

To elucidate at which stage of infection the SG200Δcce1 strain is impaired, we followed its growth *in planta*. For this, *Z. mays* seedlings were infected with either SG200, SG200Δcce1, or the complementation strain SG200Δcce1-cce1-3xHA. In comparison to SG200 and the complementation strain, the development of SG200Δcce1 was arrested at the onset of infection (Fig. 2B and Supporting Information Fig. S2). In addition to its use as a cell wall stain, propidium iodide can stain nucleic acids if the integrity of the plasma membrane is disrupted (Lo Presti *et al.*, 2017). Consistent with the macroscopic chlorotic symptoms we observed, cells next to SG200Δcce1 often showed staining of internal structures indicating local hypersensitive responses leading to cellular disintegration and propidium iodide staining of nucleic acids (Fig. 2B and Supporting Information Fig. S2). This again suggests that Cce1 is essential for virulence of *U. maydis* during its infection of maize.

To exclude the possibility that Cce1 is involved in the formation of penetration structures, we quantified the formation of appressoria and penetration structures with a microscopy-based assay (Mendoza-Mendoza *et al.*, 2009). We compared appressorial marker induction and penetration efficiency of a fluorescently labelled *cce1* mutant strain to the progenitor strain. No significant differences between the two strains were observed, demonstrating that appressoria formation is independent of Cce1 and the SG200Δcce1-AM1 strain is still able to form penetration structures (Supporting Information Fig. S3).

Taken together, these results show that Cce1 is not involved in stress responses or appressoria formation of *U. maydis*, but is essential for the virulence of the fungus early after the initial penetration event.

Cce1 is an effector

As one hallmark of effector proteins is that they are secreted, we tested if Cce1 is secreted, and whether its secretion is essential for virulence. We generated *cce1* constructs with C-terminal *mCherry-HA* tags under control of the native promoter that either

lack the secretion signal (*cce1*₂₄₋₁₂₉) or were substituted by the signal peptide of Cmu1 (*cmu1*₁₋₂₁-*cce1*₂₄₋₁₂₉), a well characterized, secreted effector of *U. maydis* (Djamei *et al.*, 2011), and ectopically integrated them into SG200Δ*cce1*. The strain expressing *cce1*

fused to *mCherry-HA* under control of the *cce1* promoter was used to test if Cce1-mCherry-HA fusion proteins are still functional. Assessment of pathogenicity revealed that strains containing a secretion signal, either from Cce1 itself (SG200Δ*cce1*-*cce1*-mCherry-HA)

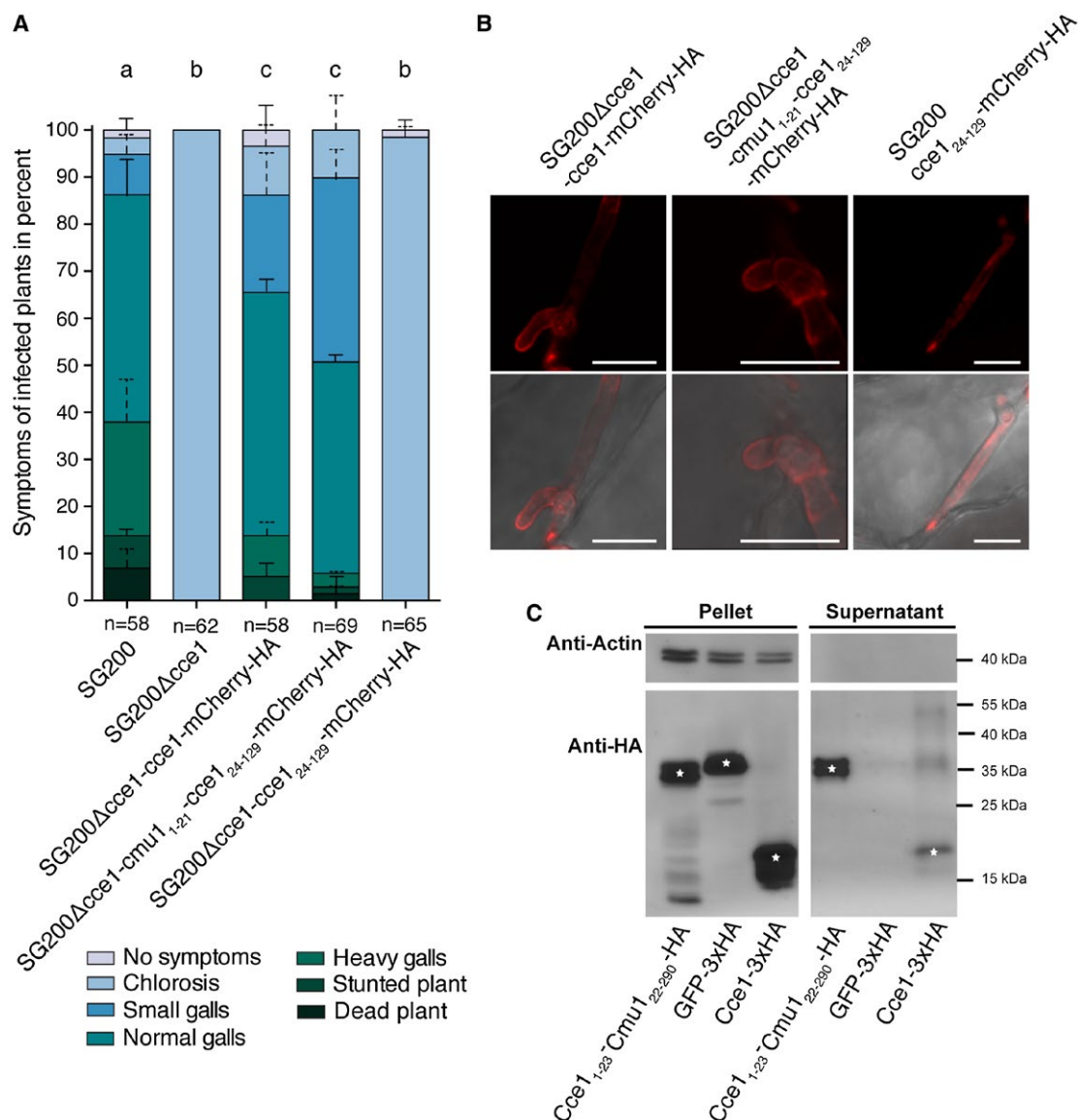


Fig. 3 Disease symptom rating and secretion of Cce1. (A) Seven-day-old *Z. mays* seedlings were infected with the *U. maydis* strains SG200, SG200Δ*cce1*, and the three complementation strains SG200Δ*cce1*-*cce1*-mCherry-HA, SG200Δ*cce1*-*cmu1*₁₋₂₁-*cce1*₂₄₋₁₂₉-mCherry-HA, and SG200Δ*cce1*-*cce1*₂₄₋₁₂₉-mCherry-HA. Disease symptoms were scored twelve days post infection (dpi). Mean and standard deviation of relative counts from two replicates are displayed. For clarity, only positive error bars are shown. n = number of plants scored. Significant differences between the strains are indicated by a, b, c. p-values calculated by Fisher's exact test, MTC by Benjamini-Hochberg algorithm. $\alpha = 0.05$ (B) Localization of Cce1-mCherry-HA fusion proteins with and without secretion signal. The Cce1-mCherry-HA fusion proteins containing endogenous Cce1 signal peptide (left) as well as the same construct containing the signal peptide from Cmu1 (middle) are localized mainly at the periphery of the fungus. The Cce1-mCherry-HA version without secretion signal (right) is located in the cytoplasm of the fungus. Photomicrographs were taken seven days post infection. Upper row: mCherry fluorescence (red); lower row: overlay of mCherry channel and brightfield. Scale bar = 10 μm . (C) Secretion of Cce1 in axenic culture. Cce1-3xHA protein as well as Cce1₁₋₂₃-Cmu1₂₂₋₂₉₀-HA was detected by immunoblotting in the pellet as well as in the supernatant of the strain AB33 P_{otef}-*cce1*-3xHA and AB33 P_{otef}-*cce1*₁₋₂₃-*cmu1*₂₂₋₂₉₀-HA, respectively, whereas cytosolic GFP-3xHA as well as actin was only detected in the cell pellet fraction. White asterisks on the immunoblot bands indicate the expected band size for the respective immunolabelled proteins. [Colour figure can be viewed at wileyonlinelibrary.com]

or from Cmu1 (SG200 Δ cce1-cmu1₁₋₂₁-cce1₂₄₋₁₂₉-mCherry-HA), can partially complement the virulence defect of the SG200 Δ cce1 strain. The strain lacking the signal peptide (SG200 Δ cce1-cce1₂₄₋₁₂₉-mCherry-HA) was not able to infect the plant and did not cause symptoms beyond chlorosis, indicating that secretion of Cce1 is essential for its function (Fig. 3A).

To determine the localization of the Cce1-mCherry-HA fusion protein with or without secretion signals, we performed confocal laser scanning microscopy on infected maize leaf sections. As SG200 Δ cce1 cannot be complemented with Cce1₂₄₋₁₂₉-mCherry-HA, this construct was transformed into SG200 (SG200-cce1₂₄₋₁₂₉-mCherry-HA) to compare its localization

pattern with the other mCherry fusion proteins. The fusion proteins containing a secretion signal were tested using the same SG200 Δ cce1 complementation strains as in the previous virulence assay. The fusion proteins Cce1-mCherry-HA as well as Cmu1₁₋₂₁-Cce1₂₄₋₁₂₉-mCherry-HA localized mainly at the surroundings of the fungal hyphae in the biotrophic interface, indicating that these proteins are secreted. In contrast, in the SG200 strain expressing Cce1₂₄₋₁₂₉, the mCherry signal was detected in the cytoplasm of the fungus and not at the surroundings (Fig. 3B and Supporting Information Fig. S4). In addition, plasmolysis was induced to increase the area of the biotrophic interphase. Consistent with the previous findings,

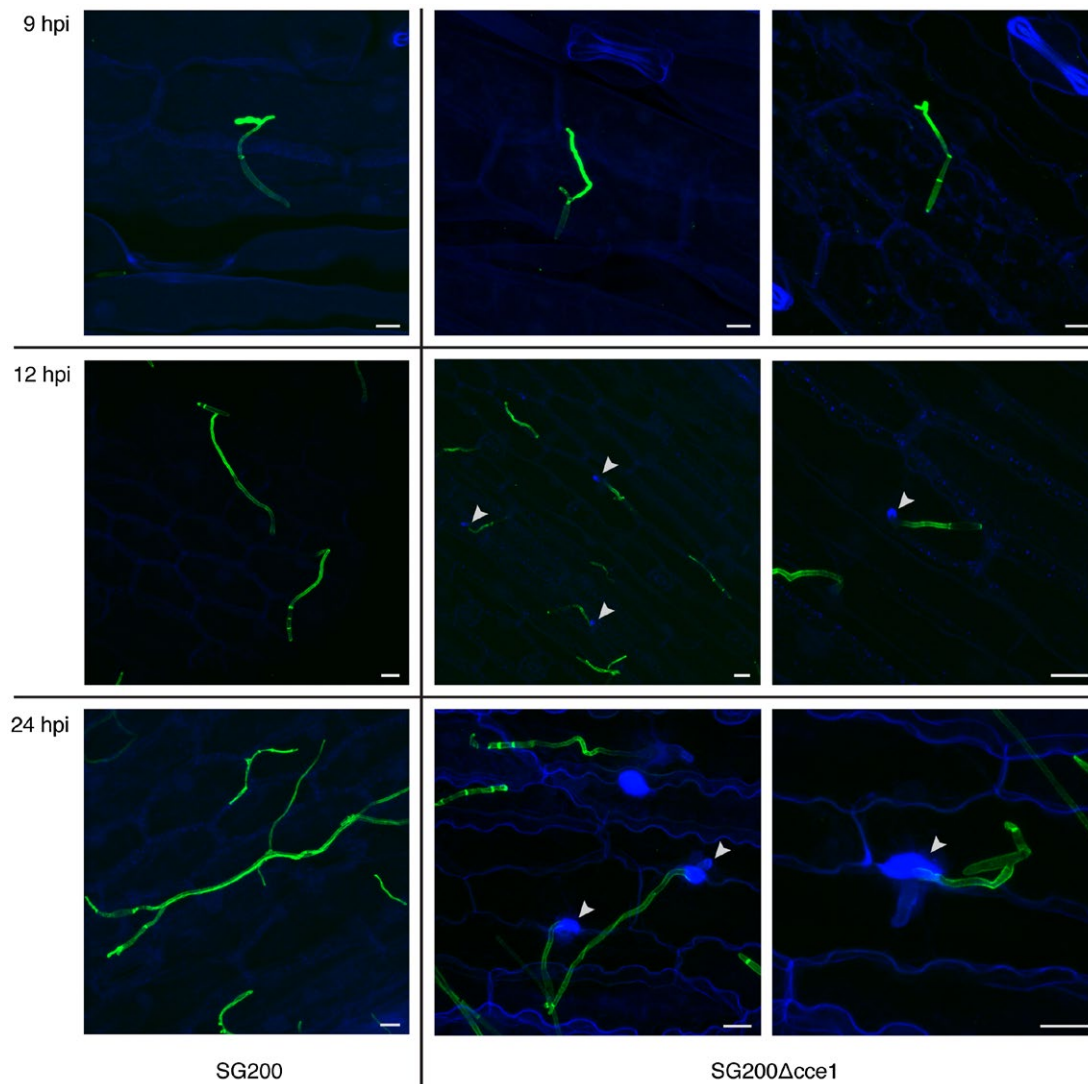


Fig. 4 Detection of papillae formation by callose staining with aniline blue. The progenitor strain SG200 (left) does not induce callose deposition, whereas the SG200 Δ cce1 deletion strain (two right panels) causes papillae formation and callose deposition at penetration sites. Photomicrographs were taken 9, 12, and 24 hours post infection (hpi). WGA-AF488 fluorescence (green) stains fungal hyphae; aniline blue fluorescence (blue) to visualize callose deposition; white arrows indicate sites of callose deposition. Scale bar = 10 μ m. [Colour figure can be viewed at wileyonlinelibrary.com]

the fluorescent signal of Cce1-mCherry-HA is present in the surroundings of the fungal hyphae (Supporting Information Fig. S5). Immunoblotting of the Cce1-mCherry-HA fusion proteins revealed that these proteins are either cleaved by the fungus or the plant or degraded during the experimental procedure. Therefore, we cannot exclude that cleavage products are taken up by the plant cell (Supporting Information Fig. S6). In conclusion, these results suggest that the predicted Cce1 signal peptide enables the secretion of Cce1 to the biotrophic interface.

To further support our phenotyping and microscopy data, secretion of Cce1-3xHA was tested in axenic culture of the *U. maydis* strain AB33. The transgenic AB33 strain carries a heterodimeric transcription factor under control of a nitrogen-inducible promoter to trigger filament formation, thereby mimicking a developmental stage usually induced only on the plant leaf upon infection (Brachmann *et al.*, 2001). AB33 was transformed with *p123-otef:cce1-3xHA* under control of the constitutively active *otef*-promoter. To confirm the functionality of Cce1's predicted secretion signal independent of the Cce1 protein, it was fused to Cmu1₂₂₋₂₉₀ (Cce1₁₋₂₃-Cmu1₂₂₋₂₉₀-HA), while GFP-3xHA was used as a negative control. To exclude that detection of Cce1-3xHA was due to cellular lysis and not from secretion, all samples, including supernatants, were also tested for the presence or absence of actin as a cytoplasmic marker. Immunoblotting of the proteins revealed that GFP-3xHA, as well as actin, could only be detected in the cell pellet, whereas Cce1-3xHA and Cce1₁₋₂₃-Cmu1₂₂₋₂₉₀-HA were found in the supernatant. This finding indicates that the secretion signal of Cce1 is functional and Cce1-3xHA is secreted from the fungus in axenic culture (Fig. 3C).

We have shown that Cce1 is secreted from the fungus into supernatants when constitutively expressed, that Cce1 without a secretion signal is not able to complement the virulence defect of the deletion strain, and that Cce1-mCherry-HA fusion proteins are secreted from the fungal hyphae. Taken together, this indicates that Cce1 is an essential effector for *Ustilago maydis* and that secretion is inevitable for its function.

SG200Δcce1 induces early plant defense response

Plant cell wall modifications, like deposition of papillae enriched with callose ((1,3)-β-D-glucose), are part of the initial defense mechanisms of a plant cell to generate effective barriers at the fungal penetration site (Voigt, 2014). To determine if the plant recognizes the Cce1 deletion strain and if early defense responses are induced, callose staining with aniline blue was performed. No papillae were present in plants infected with the progenitor strain SG200, whereas papillae were visible at the penetration sites of SG200Δcce1 already twelve hours post infection (Fig. 4). At 24 hours post infection, papillae had increased in size and the fungus was hampered in penetrating the plant cell wall. This result indicates that the plant can recognize

SG200Δcce1, whereas SG200 is able to suppress the plant's defense response and inhibit induction of papillae formation.

Cce1 is conserved among other smut fungi

Homology searches revealed orthologs of *cce1* in the sequenced genomes of the smut fungi *Ustilago bromivora*, *Ustilago hordei*, *Sporisorium scitamineum*, and *Sporisorium reilianum* as well as in the ustilaginomycetous anamorphic yeast *Moesziomyces antarcticus* (Laurie *et al.*, 2012; Morita *et al.*, 2014; Rabe *et al.*, 2016a; Schirawski *et al.*, 2010; Taniguti *et al.*, 2015). Alignment of these orthologous proteins showed that the sequences are highly conserved, with sequence identity varying from 59% to 65%. Protein similarity varies between 66% to 74% (Table 1). The part of the secretion signal as well as the C-terminus are the least conserved regions (Supporting Information Fig. S7). All eight cysteine residues present in the center of the protein are conserved in all of the orthologs, indicating an important role for the putative disulfide bonds. Further, all of the Cce1 orthologs are predicted to be secreted by SignalP and, except for the *S. scitamineum* ortholog, are predicted to localize to the apoplast space (Table 1) (Petersen *et al.*, 2011; Sperschneider *et al.*, 2017). Interestingly, the neighboring genes of Cce1, UMAG_11489, UMAG_11490, UMAG_02874, and UMAG_11491 are conserved in the genomes of the aforementioned fungi, even in the dicot specific fungus *Melanopsichium pennsylvanicum*, which does not contain an ortholog of Cce1 (Supporting Information Fig. S8 and Table S1).

Given the high similarity between the orthologs of Cce1, we chose the least similar ortholog, Ubcce1 from *U. bromivora* with 66% similarity to *U. maydis*, to perform complementation experiments. We introduced Ubcce1 under control of the *U. maydis cce1* promoter into the SG200Δcce1 strain. Pathogenicity assays revealed that Ubcce1 can fully complement the mutant phenotype of SG200Δcce1 (Fig. 5).

As an essential effector with a high degree of conservation across various smut fungi, Cce1 is a core effector of *U. maydis*.

DISCUSSION

Over the past several years, major progress has been made in identifying virulence factors and understanding the role of effector proteins (Giraldo and Valent, 2013; Rovenich *et al.*, 2014; Toruno *et al.*, 2016). With the growing number of sequenced genomes of various plant pathogenic microorganisms, the number of putative effectors has grown rapidly. Compared to the number of predicted effectors, there is very little experimental evidence for their functions. In *U. maydis*, only a limited number of effectors show a significant loss of virulence when they are deleted (Doehlemann *et al.*, 2009; Kämper *et al.*, 2006; Mueller *et al.*, 2013; Stirnberg and Djamei, 2016). Among the

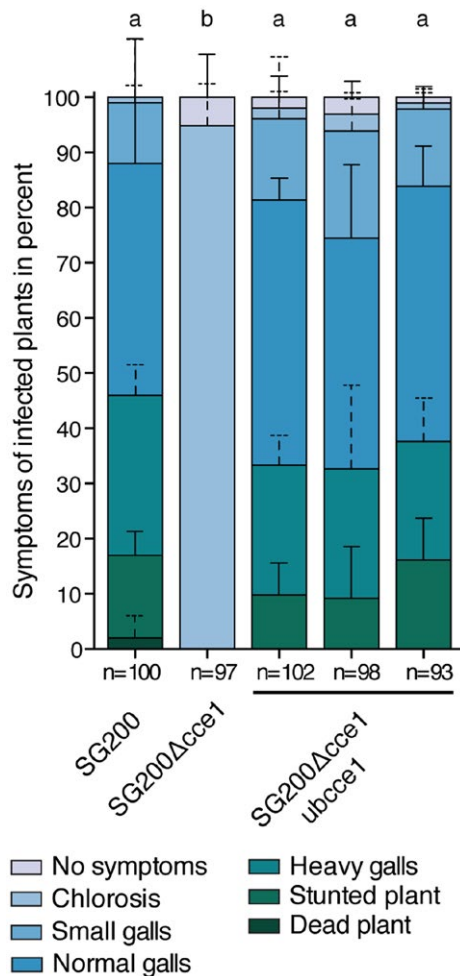


Fig. 5 Cce1 complementation with the *U. bromivora* ortholog. Symptom rating of the *U. maydis* strain SG200Δcce1 in comparison to the progenitor strain SG200 and three individual SG200Δcce1-ubcce1 complementation strains seven days post infection (dpi). Mean and standard deviation of relative counts from three replicates are displayed. For clarity, only positive error bars are shown. n = number of plants scored. Significant differences between the strains are indicated by a, b, p-values calculated by Fisher's exact test, MTC by Benjamini-Hochberg algorithm. $\alpha = 0.05$. [Colour figure can be viewed at wileyonlinelibrary.com]

467 predicted effector protein coding sequences in the *U. maydis* genome (Schuster *et al.*, 2017), Cce1 has several features of a typical effector. It is relatively small (129 aa) and does not contain any known domains. Moreover, we experimentally confirmed the functionality of its signal peptide and showed that Cce1 is strongly induced during biotrophic stages.

Effector evolution is based on the trade-off between optimal virulence and avoiding recognition by the host immune receptors. It has been proposed that the high selection pressure on this class of molecules has led to an accumulation of putative effectors in transposon-rich regions (Rouxel *et al.*, 2011) or other dynamic regions such as chromosomal breakpoints (de Jonge *et al.*,

2013), which enable the accelerated evolution (Schirawski *et al.*, 2010) of these sequences. In smut fungi, effectors are often found in clusters as a result of gene duplication events followed by this accelerated evolution. This has led to a relatively low degree of conservation among smut effectors in general (Kämper *et al.*, 2006; Laurie *et al.*, 2012; Rabe *et al.*, 2016a; Schirawski *et al.*, 2010). In this respect, Cce1 is an atypical smut effector as it is not clustered with other putative effector genes and does not have any paralogs. Its relatively high conservation between smuts that infect diverse monocot hosts and our demonstration that the *U. bromivora* Cce1 ortholog can complement the loss of Cce1 from *U. maydis* indicates that Cce1's mode of action and target is very likely conserved between *Brachypodium spec.* and maize. Orthologs of *cce1* can be found in the majority of smut fungi, suggesting that Cce1 is a core effector. However, Cce1 is not present in the only sequenced dicot specific smut, *Melanopsichium pennsylvanicum*. This could be because Cce1's target is monocot specific, leading to its loss in this *Panicaria spec.* infecting smut (Sharma *et al.*, 2014). Alternatively, an evolutionary unrelated but functionally redundant effector evolved in *M. pennsylvanicum* allowing the *cce1* ortholog to be lost from its genome.

The observation that ectopically expressed, tagged versions of Cce1 could only partially complement the virulence defect of the SG200Δcce1 deletion strain could either indicate that these tags partially inhibit the function of the Cce1 protein or that ectopic expression does not exactly mimic the expression of *cce1* from its native locus and that fine tuning of its transcriptional regulation is important for Cce1 function.

Our results, as well as the apoplastic localization prediction by ApoplastP, indicate that Cce1 might act in the biotrophic interphase. Eight highly conserved cysteines in the Cce1 polypeptide are likely to form four disulfide bonds, providing structural stability to the protein under the oxidative environment of the apoplast. The Cce1-mCherry-HA fusion protein accumulates in the biotrophic interphase *in vivo* and complements the knockout phenotype. However, as cleavage products of Cce1-mCherry-HA were detected by immunoblotting, we cannot exclude that Cce1 might be cleaved and translocated into the plant cell functioning as a symplastic effector. The virulence phenotype of the *cce1* deletion strain shows strong similarities to the phenotype of the deletion strain of *pep1*, an apoplastic core effector of *U. maydis* (Doehlemann *et al.*, 2009; Hemetsberger *et al.*, 2012, 2015). *pep1* deletion strains are a pathogenic and are blocked in the first epidermal cell after penetration, as is the Δ*cce1* strain. Both strains induce papillae formation, indicated by callose deposition, as a strong defense response of the host plant (Hemetsberger *et al.*, 2012). In the case of *Pep1*, host peroxidases involved in PTI have been identified as targets. We have not yet identified targets of Cce1; a yeast two-hybrid screen as well as immunoprecipitation from maize tissue infected with

SG200 *cce1*-HA expressing strains followed by mass spectrometry did not identify relevant targets (data not shown). In the yeast two-hybrid screens, apoplastic localized gene products are underrepresented due to putative mislocalization caused by the signal peptide. Failure of the mass spectrometry approach was possibly due to low amounts of the Cce1-HA protein. Another explanation is that the target of Cce1 is not a protein, and would therefore not be identified by either yeast two-hybrid or immunoprecipitation methods.

Given the similarity of the virulence defect phenotype with Δ pep1 mutant strains, we speculate that Cce1 inhibits early PTI activation or responses. Identification of the molecular mechanism remains a challenge for future research.

EXPERIMENTAL PROCEDURES

Strains, plasmids and infection assays

Standard molecular cloning procedures were applied to generate plasmids (Sambrook *et al.*, 1989). Primers and plasmids used in this study are listed in Supporting Information Tables S2 and S3. Plasmids are based on the p123 vector (Aichinger *et al.*, 2003). pUG plasmids were generated using the GreenGate modular system (Lampropoulos *et al.*, 2013) and adapting the p123 vector accordingly. DNA used for the modules of the GreenGate system were either obtained from the published system (Lampropoulos *et al.*, 2013) or directly amplified by PCR (see Supporting Information Table S2 for primers). Vector maps with detailed sequence information are available on request.

U. maydis strains were generated by gene replacement via homologous recombination with PCR-derived constructs (Kämper, 2004) or by ectopic insertion of p123 derivatives into the *ip* locus (Keon *et al.*, 1991; Loubradou *et al.*, 2001). Transformants were confirmed by PCR. *U. maydis* was grown in liquid culture in YEPS light (0.4% yeast extract, 0.4% peptone, 2% sucrose) or on PD plates (2.4% Potato Dextrose Broth, 2% agar) at 28°C. Pathogenicity assays and disease symptom scoring were performed as described (Kämper *et al.*, 2006). To test different stress conditions, serial dilutions of *U. maydis* strains were spotted on CM agar plates containing 1% glucose and different stress-inducing compounds, and incubated at 28°C for 48 h. For induction of filamentous growth, strains were spotted on CM agar plates containing 1% activated charcoal.

Zea mays variety EGB (Old Seeds, Madison, WI, USA) was grown in a temperature-controlled glasshouse (14 h/10 h light/dark cycle, 28°C/20°C).

Quantitative real-time PCR

Quantitative real-time PCR was performed as described in Rabe *et al.* 2016 (Rabe *et al.*, 2016b). In brief, RNA was extracted from *U. maydis* axenic culture or from infected plant material using the TRIzol method according to the manufacturer's protocol

(Thermo Fisher Scientific, Waltham, MA, USA) followed by DNA removal using DNase I (DNA-free kit, Thermo Fisher Scientific, Waltham, MA, USA). Reverse transcription was performed using the RevertAid First Strand cDNA Synthesis Kit (Thermo Fisher Scientific, Waltham, MA, USA). The Roche LightCycler® 96 system (Roche Diagnostics, Rotkreuz, Switzerland) was used to perform quantitative real-time PCR measurements according to manufacturer's instructions. Relative expression values were calculated using the $2^{-\Delta\Delta C_t}$ method (Livak and Schmittgen, 2001). Statistical analysis and graphical outputs were performed using GraphPad Prism (Version 6.0, GraphPad Software, La Jolla, CA, USA).

Secretion assay and immunoblotting

Detection of secreted proteins from fungal hyphae was performed as described in Djamei *et al.*, 2011 (Djamei *et al.*, 2011). In brief, 6 h after filament induction, the cell-free supernatant was precipitated with 10% trichloroacetic acid (final concentration) and 0.02% sodium deoxycholate (final concentration) and protein extracts of the filamentous cells and culture supernatants were subjected to immunoblotting. For detection of Cce1-mCherry-HA fusion proteins infected plant material was grinded and proteins were extracted using the extraction buffer described in Lo Presti *et al.*, 2017 (Lo Presti *et al.*, 2017). Protein extracts were subjected to immunoblotting. Actin detection via mouse anti-actin antibody (Invitrogen, Waltham, MA, USA) served as a lysis control. Proteins were detected using mouse anti-haemagglutinin (anti-HA) antibody (Sigma-Aldrich, St. Louis, MO, USA).

Microscopy

For visualization of fungal proliferation in infected tissue, fungal chitin was stained with wheat germ agglutinin (WGA) conjugated to the fluorescent dye Alexa Fluor® 488 (Invitrogen). Plant cell walls were counterstained with propidium iodide (Sigma-Aldrich, St. Louis, MO, USA). Maize leaves were de-stained in 100% ethanol. After de-staining, the leaves were covered with 10% KOH and incubated at 85°C for three to four hours. Samples were washed with 1x PBS until a pH of 7.4 was reached. After washing, the leaves were covered with staining solution (20 µg/ml propidium iodide, 10 µg/ml WGA-AF488, 0.02% Tween20 in 1x PBS (pH 7.4)) and vacuum was applied three times. Visualization of fluorescently tagged proteins was performed by direct observation by confocal microscopy of infected leaf samples. Appressoria formation and penetration efficiency experiments were performed as described (Mendoza-Mendoza *et al.*, 2009; Stirnberg and Djamei, 2016). Briefly, two strains (SG200AM1-RFP and SG200 Δ cce1-AM1) were mixed, maize was infected with this cell suspension, and leaf sections were stained 18-20 hours post infection. SG200AM1-RFP cells appear red due to expression of RFP (red fluorescent protein) and blue due to calcofluor white staining. After induction of the appressorial

marker, SG200AM1 cells appear blue, red, and green due to induction of GFP (green fluorescent protein). SG200 Δ cce1-AM1 cells appear blue before appressoria induction or green and blue after. Confocal microscopy was performed using an LSM780 Axio Observer inverted microscope (Zeiss). Aniline blue staining for callose detection was performed by de-staining infected maize leaves in 100% ethanol. After de-staining, samples were incubated in 1x PBS for 30 min. Leaves were covered with staining solution (10 μ g/ml WGA-AF488, 0.02% Tween20 in 1x PBS (pH 7.4)) and incubated for 30 min. Samples were washed with 1xPBS and incubated in sodium phosphate buffer (0.07 M, pH 9) for 30 min followed by incubation with 0.005% Aniline blue solution (in sodium phosphate buffer 0.07 M, pH 9) for one hour. Leaves were washed with sodium phosphate buffer and visualized by confocal microscopy. Plasmolysis was induced by infiltrating leaf sections with 1M NaCl (Doehlemann *et al.*, 2009). 3D rendering was performed by applying the 3D Surface Plot function of the ImageJ 2.0.0 software on previously obtained z-stacks of confocal microscopy images. In this work, the following conditions were used: WGA-AF488, excitation at 488 nm, detection at 499–552 nm; propidium iodide, excitation at 561 nm, detection at 595–665 nm; mCherry, excitation at 561 nm, detection at 578–648 nm; Aniline blue, excitation at 405 nm, detection at 415–502 nm; Calcofluor white, excitation at 405 nm, detection at 415–464 nm; GFP, excitation at 561 nm, detection at 473–552 nm; RFP, excitation at 488 nm, detection at 578–657 nm. Microscopy images were processed using the software ZEN 2012 SP1. Filament formation on charcoal plates was observed with a Zeiss widefield stereo microscope.

Bioinformatic analysis

Gene and protein sequences of *U. maydis*, *U. hordei*, *U. bromivora*, *S. reilianum* and *S. scitamineum* were obtained from the Pedant *Ustilago maydis* Database, the Pedant *Ustilago hordei* Database, the Pedant *Ustilago bromivora* Database, the Pedant *Sporisorium reilianum* Database and the Pedant *Sporisorium scitamineum* Database, respectively (<https://pedant.helmholtz-muenchen.de>). Sequences of *M. antarcticus* were obtained from the National Center for Biotechnology Information (NCBI). Amino acid sequence alignments were performed using CLC Main Workbench 7 (Qiagen, Hilden, Germany). Protein sequence identity and similarity values were obtained using the Ident and Sim tool from The Sequence Manipulation Suite (https://www.bioinformatics.org/sms2/ident_sim.html) (Stothard, 2000). SignalP 4.1 was used to predict secretion signals (<https://www.cbs.dtu.dk/services/SignalP/>) (Petersen *et al.*, 2011). For prediction of apoplast localization, ApoplastP 1.0 was used (<https://apoplastp.csiro.au/index.html>) (Sperschneider *et al.*, 2017).

An R script was used for disease scoring evaluation as described in Stirnberg *et al.* (Stirnberg and Djamei, 2016). Class counts of biological replicates were summarized and Fisher's exact test was used to determine significant differences between genotypes. The Benjamini-Hochberg algorithm was used for multiple testing correction (Benjamini *et al.*, 2001). For visualization, each genotype and replicate was converted to relative counts. GraphPad prism (Version 6.0, GraphPad Software, La Jolla, CA, USA) was used for data visualization.

Statistical analysis and graphical output of appressoria marker was performed using GraphPad prism (Version 6.0, GraphPad Software, La Jolla, CA, USA).

ACKNOWLEDGEMENTS

We would like to thank the GMI/IMBA/IMP service facilities for excellent technical support, especially the BioOptics and Molecular Biology Service. We are grateful to Franziska Rabe, Lisa Bauer, and Elizabeth Hubbard for experimental help and critical discussions, as well as Fernando Navarrete, André Alcântara, Martin Darino, Gesa Hoffmann, and Matthew Watson, for valuable feedback on the manuscript. We would like to thank Angelika Czedik-Eysenberg for the R script used and valuable feedback on the manuscript. We are grateful to Professor Regine Kahmann for kindly providing us with several published *U. maydis* strains and constructs. The research leading to these results has received funding from the European Research Council under the European Union's Seventh Framework Programme (FP7/2007-2013)/ERC grant agreement n° EFFECTOMICS - elucidating the toolbox of biotrophic pathogens, ERC-2013-STG, Grant Agreement: 335691, the Austrian Science Fund (FWF): [P27429-B22, P27818-B22, I 3033-B22], and the Austrian Academy of Science (OEAW).

CONFLICT OF INTEREST

The authors declare that there is no conflict of interest in the research.

REFERENCES

- Aichinger, C., Hansson, K., Eichhorn, H., Lessing, F., Mannhaupt, G., Mewes, W. and Kahmann, R. (2003) Identification of plant-regulated genes in *Ustilago maydis* by enhancer-trapping mutagenesis. *Mol. Genet. Genomics*, **270**, 303–314.
- Benjamini, Y., Drai, D., Elmer, G., Kafkafi, N. and Golani, I. (2001) Controlling the false discovery rate in behavior genetics research. *Behav. Brain Res.* **125**, 279–284.
- Brachmann, A., Weinzierl, G., Kamper, J. and Kahmann, R. (2001) Identification of genes in the bW/bE regulatory cascade in *Ustilago maydis*. *Mol. Microbiol.* **42**, 1047–1063.
- Brefort, T., Doehlemann, G., Mendoza-Mendoza, A., Reissmann, S., Djamei, A. and Kahmann, R. (2009) *Ustilago maydis* as a pathogen. *Annu. Rev. Phytopathol.* **47**, 423–445.

- Cook, D.E., Mesarich, C.H. and Thomma, B.P. (2015) Understanding plant immunity as a surveillance system to detect invasion. *Annu. Rev. Phytopathol.* **53**, 541–563.
- de Jonge, R., Bolton, M.D. and Thomma, B.P. (2011) How filamentous pathogens co-opt plants: the ins and outs of fungal effectors. *Curr. Opin. Plant Biol.* **14**, 400–406.
- de Jonge, R., Bolton, M.D., Kombrink, A., van den Berg, G.C., Yadeta, K.A. and Thomma, B.P. (2013) Extensive chromosomal reshuffling drives evolution of virulence in an asexual pathogen. *Genome Res.* **23**, 1271–1282.
- Djamei, A., Schipper, K., Rabe, F., Ghosh, A., Vincon, V., Kahnt, J., Osorio, S., Tohge, T., Fernie, A.R., Feussner, I., Feussner, K., Meinicke, P., Stierhof, Y.D., Schwarz, H., Macek, B., Mann, M. and Kahmann, R. (2011) Metabolic priming by a secreted fungal effector. *Nature*, **478**, 395–398.
- Doehlemann, G., vanderLinde, K., Assmann, D., Schwambach, D., Hof, A., Mohanty, A., Jackson, D. and Kahmann, R. (2009) Pep1, a secreted effector protein of *Ustilago maydis*, is required for successful invasion of plant cells. *PLoS Pathog.* **5**, e1000290.
- Giraldo, M.C. and Valent, B. (2013) Filamentous plant pathogen effectors in action. *Nat. Rev. Microbiol.* **11**, 800–814.
- Hemetsberger, C., Herrberger, C., Zechmann, B., Hillmer, M. and Doehlemann, G. (2012) The *Ustilago maydis* effector Pep1 suppresses plant immunity by inhibition of host peroxidase activity. *PLoS Pathog.* **8**, e1002684.
- Hemetsberger, C., Mueller, A.N., Matei, A., Herrberger, C., Hensel, G., Kumlehn, J., Mishra, B., Sharma, R., Thines, M., Huckelhoeven, R. and Doehlemann, G. (2015) The fungal core effector Pep1 is conserved across smuts of dicots and monocots. *New Phytol.* **206**, 1116–1126.
- Jones, J.D. and Dangl, J.L. (2006) The plant immune system. *Nature*, **444**, 323–329.
- Kämper, J. (2004) A PCR-based system for highly efficient generation of gene replacement mutants in *Ustilago maydis*. *Mol. Genet. Genomics*, **271**, 103–110.
- Kämper, J., Kahmann, R., Bölker, M., Ma, L.-J., Brefort, T., Saville, B.J., Banuett, F., Kronstad, J.W., Gold, S.E., Müller, O., Perlin, M.H., Wösten, H.A.B., de Vries, R., Ruiz-Herrera, J., Reynaga-Peña, C.G., Snetselaar, K., McCann, M., Pérez-Martín, J., Feldbrügge, M., Basse, C.W., Steinberg, G., Ibeas, J.I., Holloman, W., Guzman, P., Farman, M., Stajich, J.E., Sentandreu, R., González-Prieto, J.M., Kennell, J.C., Molina, L., Schirawski, J., Mendoza-Mendoza, A., Greilinger, D., Münch, K., Rössel, N., Scherer, M., Vraneš, M., Ladendorf, O., Vincon, V., Fuchs, U., Sandrock, B., Meng, S., Ho, E.C.H., Cahill, M.J., Boyce, K.J., Klose, J., Klosterman, S.J., Deelstra, H.J., Ortiz-Castellanos, L., Li, W., Sanchez-Alonso, P., Schreier, P.H., Häuser-Hahn, I., Vaupel, M., Koopmann, E., Friedrich, G., Voss, H., Schlüter, T., Margolis, J., Platt, D., Swimmer, C., Gnirke, A., Chen, F., Vysotskaia, V., Mannhaupt, G., Güldener, U., Münsterkötter, M., Haase, D., Oesterheld, M., Mewes, H.-W., Mauceli, E.W., DeCaprio, D., Wade, C.M., Butler, J., Young, S., Jaffe, D.B., Calvo, S., Nusbaum, C., Galagan, J. and Birren, B.W. (2006) Insights from the genome of the biotrophic fungal plant pathogen *Ustilago maydis*. *Nature*, **444**, 97–101.
- Keon, J.P., White, G.A. and Hargreaves, J.A. (1991) Isolation, characterization and sequence of a gene conferring resistance to the systemic fungicide carboxin from the maize smut pathogen, *Ustilago maydis*. *Curr. Genet.* **19**, 475–481.
- Lampropoulos, A., Sutkovic, Z., Wenzl, C., Maegele, I., Lohmann, J.U. and Forner, J. (2013) GreenGate—a novel, versatile, and efficient cloning system for plant transgenesis. *PLoS One*, **8**, e83043.
- Lanver, D., Tollot, M., Schweizer, G., Lo Presti, L., Reissmann, S., Ma, L.-S., Schuster, M., Tanaka, S., Liang, L., Ludwig, N. and Kahmann, R. (2017) *Ustilago maydis* effectors and their impact on virulence. *Nat. Rev. Microbiol.* **15**, 409–421.
- Laurie, J.D., Ali, S., Linning, R., Mannhaupt, G., Wong, P., Guldener, U., Münsterkötter, M., Moore, R., Kahmann, R., Bakkeren, G. and Schirawski, J. (2012) Genome comparison of barley and maize smut fungi reveals targeted loss of RNA silencing components and species-specific presence of transposable elements. *Plant Cell*, **24**, 1733–1745.
- Livak, K.J. and Schmittgen, T.D. (2001) Analysis of relative gene expression data using real-time quantitative PCR and the 2(-Delta Delta C(T)) Method. *Methods*, **25**, 402–408.
- Lo Presti, L., Lanver, D., Schweizer, G., Tanaka, S., Liang, L., Tollot, M., Zuccaro, A., Reissmann, S. and Kahmann, R. (2015) Fungal effectors and plant susceptibility. *Annu. Rev. Plant Biol.* **66**, 513–545.
- Lo Presti, L., Zechmann, B., Kumlehn, J., Liang, L., Lanver, D., Tanaka, S., Bock, R. and Kahmann, R. (2017) An assay for entry of secreted fungal effectors into plant cells. *New Phytol.* **213**, 956–964.
- Loubradou, G., Brachmann, A., Feldbrugge, M. and Kahmann, R. (2001) A homologue of the transcriptional repressor Ssn6p antagonizes cAMP signalling in *Ustilago maydis*. *Mol. Microbiol.* **40**, 719–730.
- Mendoza-Mendoza, A., Berndt, P., Djamei, A., Weise, C., Linne, U., Marahiel, M., Vraneš, M., Kämper, J. and Kahmann, R. (2009) Physical-chemical plant-derived signals induce differentiation in *Ustilago maydis*. *Mol. Microbiol.* **71**, 895–911.
- Morita, T., Koike, H., Hagiwara, H., Ito, E., Machida, M., Sato, S., Habe, H. and Kitamoto, D. (2014) Genome and transcriptome analysis of the basidiomycetous yeast *Pseudozyma antarctica* producing extracellular glycolipids, mannosylerythritol lipids. *PLoS One*, **9**, e86490.
- Mueller, A.N., Ziemann, S., Treitschke, S., Abmann, D. and Doehlemann, G. (2013) Compatibility in the *Ustilago maydis*-maize interaction requires inhibition of host cysteine proteases by the fungal effector Pit2. *PLoS Pathog.* **9**, e1003177.
- Oliveira-Garcia, E. and Deising, H.B. (2016) Attenuation of PAMP-triggered immunity in maize requires down-regulation of the key beta-1,6-glucan synthesis genes KRE5 and KRE6 in biotrophic hyphae of *Colletotrichum graminicola*. *Plant J.* **87**, 355–375.
- Petersen, T.N., Brunak, S., von Heijne, G. and Nielsen, H. (2011) SignalP 4.0: discriminating signal peptides from transmembrane regions. *Nat. Methods*, **8**, 785–786.
- Rabe, F., Bosch, J., Stirnberg, A., Guse, T., Bauer, L., Seitner, D., Rabanal, F.A., Czedik-Eysenberg, A., Uhse, S., Bindics, J., Genencher, B., Navarrete, F., Kellner, R., Ekker, H., Kumlehn, J., Vogel, J.P., Gordon, S.P., Marcel, T.C., Münsterkötter, M., Walter, M.C., Sieber, C.M., Mannhaupt, G., Güldener, U., Kahmann, R. and Djamei, A. (2016a) A complete toolset for the study of *Ustilago bromivora* and *Brachypodium sp.* as a fungal-temperate grass pathosystem. *Elife*, **5**.
- Rabe, F., Seitner, D., Bauer, L., Navarrete, F., Czedik-Eysenberg, A., Rabanal, F.A. and Djamei, A. (2016b) Phytohormone sensing in the biotrophic fungus *Ustilago maydis* - the dual role of the transcription factor Rss1. *Mol. Microbiol.* **102**, 290–305.
- Redkar, A., Hoser, R., Schilling, L., Zechmann, B., Krzymowska, M., Walbot, V. and Doehlemann, G. (2015) A secreted effector protein of

- Ustilago maydis* guides maize leaf cells to form tumors. *Plant Cell*, **27**, 1332–1351.
- Rouxel, T., Grandaubert, J., Hane, J.K., Hoede, C., van de Wouw, A.P., Couloux, A., Dominguez, V., Anthouard, V., Bally, P., Bourras, S., Cozijnsen, A.J., Ciuffetti, L.M., Degrave, A., Dilmaghani, A., Duret, L., Fudal, I., Goodwin, S.B., Gout, L., Glaser, N., Linglin, J., Kema, G.H., Lapalu, N., Lawrence, C.B., May, K., Meyer, M., Ollivier, B., Poulain, J., Schoch, C.L., Simon, A., Spatafora, J.W., Stachowiak, A., Turgeon, B.G., Tyler, B.M., Vincent, D., Weissenbach, J., Amselem, J., Quesneville, H., Oliver, R.P., Wincker, P., Balesdent, M.H. and Howlett, B.J., (2011) Effector diversification within compartments of the *Leptosphaeria maculans* genome affected by Repeat-Induced Point mutations. *Nat. Commun.* **2**, 202.
- Rovenich, H., Boshoven, J.C. and Thomma, B.P. (2014) Filamentous pathogen effector functions: of pathogens, hosts and microbiomes. *Curr. Opin. Plant Biol.* **20**, 96–103.
- Sambrook, J., Fritsch, E.F. and Maniatis, T. (1989) *Molecular Cloning: A Laboratory Manual*. New York: Cold Spring Harbor Laboratory Press.
- Schirawski, J., Mannhaupt, G., Munch, K., Brefort, T., Schipper, K., Doehlemann, G., DiStasio, M., Rossel, N., Mendoza-Mendoza, A., Pester, D., Muller, O., Winterberg, B., Meyer, E., Ghareeb, H., Wollenberg, T., Munsterkotter, M., Wong, P., Walter, M., Stukenbrock, E., Guldener, U. and Kahmann, R., (2010) Pathogenicity determinants in smut fungi revealed by genome comparison. *Science*, **330**, 1546–1548.
- Schuster, M., Schweizer, G. and Kahmann, R. (2017) Comparative analyses of secreted proteins in plant pathogenic smut fungi and related basidiomycetes. *Fungal Genet. Biol.* **112**, 21–30.
- Sharma, R., Mishra, B., Runge, F. and Thines, M. (2014) Gene loss rather than gene gain is associated with a host jump from monocots to dicots in the Smut Fungus *Melanopsichium pennsylvanicum*. *Genome Biol. Evol.* **6**, 2034–2049.
- Skibbe, D.S., Doehlemann, G., Fernandes, J. and Walbot, V. (2010) Maize tumors caused by *Ustilago maydis* require organ-specific genes in host and pathogen. *Science*, **328**, 89–92.
- Sperschneider, J., Gardiner, D.M., Dodds, P.N., Tini, F., Covarelli, L., Singh, K.B., Manners, J.M. and Taylor, J.M. (2016) EffectorP: predicting fungal effector proteins from secretomes using machine learning. *New Phytol.* **210**, 743–761.
- Sperschneider, J., Dodds, P.N., Singh, K.B. and Taylor, J. (2017) ApoplastP: prediction of effectors and plant proteins in the apoplast using machine learning. *New Phytol.* **217**, 1764–1778.
- Stirnberg, A. and Djamei, A. (2016) Characterization of ApB73, a virulence factor important for colonization of Zea mays by the smut *Ustilago maydis*. *Mol. Plant Pathol.* **17**, 1467–1479.
- Stothard, P. (2000) The sequence manipulation suite: JavaScript programs for analyzing and formatting protein and DNA sequences. *Biotechniques*, **28**, 1102–1104.
- Tanaka, S., Brefort, T., Neidig, N., Djamei, A., Kahnt, J., Vermerris, W., Koenig, S., Feussner, K., Feussner, I. and Kahmann, R. (2014) A secreted *Ustilago maydis* effector promotes virulence by targeting anthocyanin biosynthesis in maize. *Elife*, **3**, e01355.
- Taniguti, L.M., Schaker, P.D., Benevenuto, J., Peters, L.P., Carvalho, G., Palhares, A., Quecine, M.C., Nunes, F.R., Kmit, M.C., Wai, A., Hausner, G., Aitken, K.S., Berkman, P.J., Fraser, J.A., Moolhuijzen, P.M., Coutinho, L.L., Creste, S., Vieira, M.L., Kitajima, J.P. and Monteiro-Vitorello, C.B. (2015) Complete genome sequence of *Sporisorium scitamineum* and biotrophic interaction transcriptome with sugarcane. *PLoS One*, **10**, e0129318.
- Toruno, T.Y., Stergiopoulos, I. and Coaker, G. (2016) Plant-pathogen effectors: cellular probes interfering with plant defenses in spatial and temporal manners. *Annu. Rev. Phytopathol.* **54**, 419–441.
- Voigt, C.A. (2014) Callose-mediated resistance to pathogenic intruders in plant defense-related papillae. *Front. Plant Sci.* **5**, 168.
- Win, J., Chaparro-Garcia, A., Belhaj, K., Saunders, D.G., Yoshida, K., Dong, S., Schornack, S., Zipfel, C., Robatzek, S., Hogenhout, S.A. and Kamoun, S. (2012) Effector biology of plant-associated organisms: concepts and perspectives. *Cold Spring Harb. Symp. Quant. Biol.* **77**, 235–247.

SUPPORTING INFORMATION

Additional Supporting Information may be found in the online version of this article at the publisher's web-site.