


Identifying potential refugia and corridors under climate change: A case study of endangered Sichuan golden monkey (*Rhinopithecus roxellana*) in Qinling Mountains, China

Jia Li^{1,2}  | Diqiang Li¹ | Yadong Xue¹ | Bo Wu² | Xiaojia He³ | Fang Liu¹

¹ Research Institute of Forest Ecology, Environment and Protection, Chinese Academy of Forestry/Key Laboratory of Forest Ecology and Environment of State Forestry Administration, Haidian, Beijing, China

² Institute of Desertification Studies, Chinese Academy of Forestry, Beijing, China

³ The Administrative Center for China's Agenda 21, Beijing, China

Correspondence

Fang Liu, Research Institute of Forest Ecology, Environment and Protection, Chinese Academy of Forestry/Key Laboratory of Forest Ecology and Environment of State Forestry Administration, Xiangshan Road, Haidian, Beijing 100091, China.
Email: liufang.caf@foxmail.com

Funding information

National Science & Technology Pillar Program for the Twelfth Five-Year Plan Period-Technology of Habitat Assessment and Restoration for Shennongjia Golden Monkey, Grant number: 2013BAD03B03; Project Funded by China Postdoctoral Science Foundation, Grant number: 2018M631624

Climate change threatens endangered species and challenges current conservation strategies. Effective conservation requires vulnerability assessments for species susceptible to climate change and adaptive strategies to mitigate threats associated with climate. In this paper, we used the Maxent to model the impacts of climate change on habitat suitability of Sichuan golden monkey *Rhinopithecus roxellana*. Our results showed that (i) suitable habitat for Sichuan golden monkey was predicted to decrease by 37% in 2050s under climate change; (ii) the mean elevations of suitable habitat in the 2050s was estimated to shift 160 m higher; (iii) nature reserves protect 62% of current suitable habitat and 56% of future suitable habitat; and (iv) 49% of current suitable habitat was predicted to be vulnerable to future climate change. Given these results, we proposed conservation implications to mitigate the impacts of climate change on Sichuan golden monkey, including adjusting range of national park, establishing habitat corridors, and conducting long-term monitoring.

KEYWORDS

climatic refugia, conservation implications, corridor, habitat suitability, Maxent, nature reserves

1 | INTRODUCTION

Climate change poses one of major threats to global biodiversity (Garcia, Cabeza, Rahbek, & Araújo, 2014) and will impact species geographical distributions (Brown et al., 2016; Ribeiro, Werneck, & Machado, 2016), population dynamics (Townsend et al., 2016; Uboni et al., 2016), phenology (Charmantier & Gienapp, 2014; Tomotani, Gienapp, Beersma, & Visser, 2016), biotic interaction (Meserve, Kelt, Gutiérrez, Previtali, & Milstead, 2016; Stenseth et al., 2015), and evolution (Waples & Audzijonyte, 2016). Furthermore, such impacts are expected to increase severity in the future (Bellard, Bertelsmeier, Leadley, Thuiller, & Courchamp, 2012). The resilience/vulnerability to climate change of species depends on their ability to minimize or

avert the adverse effects of climate change by dispersing to suitable habitat, or by deploying plastic ecological and evolutionary responses (Nicotra, Beever, Robertson, Hofmann, & O'Leary, 2015; Schloss, Nuñez, & Lawler, 2012). Species unable to respond to conditions with rapid climate change are vulnerable and have an increased probability of extinction (Urban, 2015). The Intergovernmental Panel on Climate Change (IPCC) assessed that 20–30% of all species are at grave risk of extinction due to increasing global warming (IPCC, 2014).

The potential high risk of species extinction requires us to implement adaptive conservation strategies to mitigate the harmful impacts of climate change (Arribas et al., 2012; Shen et al., 2015), and there is a pressing need to identify the species, habitats, and

This is an open access article under the terms of the Creative Commons Attribution-NonCommercial-NoDerivs License, which permits use and distribution in any medium, provided the original work is properly cited, the use is non-commercial and no modifications or adaptations are made.

© 2018 The Authors. *American Journal of Primatology* Published by Wiley Periodicals, Inc.

regions that are most likely to be effected by climate change (Balzotti, Kitchen, & Mccarthy, 2016). A few approaches for assessing species' vulnerability to climate change have been developed, such as vulnerability indices (Bagne, Friggens, & Finch, 2011), the mechanistic niche model (Schloss et al., 2012), and the bioclimatic envelope model (Forrest et al., 2012; Willis et al., 2015), among which bioclimatic envelope models are commonly used (Sinclair, White, & Newell, 2010) because they generally only require current species range and associated climate conditions (Rowland, Davison, & Graumlich, 2011). Predicted shifts in the species' range under future climate scenarios can identify at-risk species (Bellard et al., 2012) and contribute essential information to prioritize conservation strategies (Foden, Young, & Watson, 2016).

The Sichuan golden monkey (*Rhinopithecus roxellana*) is a primate species endemic to central and west-central China (Li, Jia, Pan, & Ren, 2003) and is classified as endangered by International Union for Conservation of Nature (IUCN) (Long & Richardson, 2008). Its current habitat is restricted to elevations of 1,400–3,400 m above sea level in temperate Montane forests located in Gansu, Shaanxi, Hubei, and Sichuan Provinces (Li, Pan, & Oxnard, 2002). Over the past several decades, the species has faced conditions detrimental to their survival, such as deforestation, tourism, and hunting (Guo, Ji, Li, & Li, 2008; Huang et al., 2016). As a result, the population has declined more than 50% over the past half-century (Li et al., 2002; Long & Richardson, 2008). Chinese government has implemented a number of conservation programs including the Grain-to-Green program and the Natural Forest Conservation Program (Li et al., 2013; Zhang et al., 2007) to protect and improve habitat for wildlife including the Sichuan golden monkey which serves as a recognizable flagship species for conservation in China preserve the species. At present, most pre-existing key threats and limiting factors for the species have been mitigated, and populations are now beginning to increase (Chang et al., 2012). However, climate change will pose serious threats that will degrade and fragment suitable habitat for Sichuan golden monkey (Li et al., 2016; Luo et al., 2016). The consequences of climate change on Sichuan golden monkey may pose major challenges to current conservation efforts (Luo, Liu, Pan, Zhao, & Li, 2012; Luo et al., 2015), but are poorly understood. Therefore, it is important to investigate the potential impacts of climate change on distributions of Sichuan golden monkey so that adaptive conservation strategies can be developed to promptly respond to and reduce the impacts of rapid climate change (Guisan et al., 2013; Wheatley et al., 2017) on this endangered species.

In the present research, we used the maximum entropy model (i.e., Maxent Version 3.3.3k, Phillips, Anderson, & Schapire, 2006) to make predictions on habitat suitability, to examine the species' vulnerability to climate change, to evaluate conservation effectiveness of existing nature reserves, and to identify possible climatic refuges and corridors for Sichuan golden monkey. Based on our results, we propose appropriate conservation strategies for the species in the Qinling Mountains of China.

2 | METHODS

2.1 | Study area

The study site is located in the Qinling Mountains (106°30'–108°05' E, 32°40'–34°35' N), Shaanxi Province, China. The Qinling Mountains is considered as a natural boundary separating temperate and subtropical zones (Zhao, Zhang, & Dong, 2014). The mountain rises to over 3,000 m, with a more gradual gradient on the south slopes; however, its north slopes are steep (Pan et al., 2001). It is typically warmer and moister in the south slopes than in the north, and climatic conditions are largely dependent on elevation (Pan et al., 2001). An isolated subspecies of Sichuan golden monkey, *R. roxellana qinlingensis*, occupies the Qinling Mountains (Li, Chen, Ji, & Ren, 2000). Qinling Mountains is the northern most range of the species, and approximately 4,000 individuals belonging to 39 troops inhabit this area (Li et al., 2000, 2001). Nineteen nature reserves have been established in the area and provide protection for the giant panda (*Ailuropoda melanoleuca*), Sichuan golden monkey, and other sympatric species (Fang, Xu, Zhang, Xiao, & Zhang, 2017; Xu et al., 2014).

2.2 | Data preparation

Occurrence records of Sichuan golden monkey ($N = 350$) were obtained from camera-trap monitoring, field surveys of nature reserves, and published literature in Qinling Mountains (see details in Appendix S1; Figure 1). Because these localities are from multiple unplanned surveys, the localities likely display spatial autocorrelation (Radosavljevic & Anderson, 2013). To lessen this autocorrelation, we filtered occurrence records by randomly choosing one locality within each 1-km² grid (Kramer-Schadt et al., 2013; Liu, Mcshea, & Li, 2016). After filtering, 291 unique localities remained. To calibrate the effect of selection bias on predictive performance, we created 10,000 random points as pseudo-absence data (Phillips et al., 2009) from the study area excluding a buffer area which was 10 km from occurrence points of the species in the Qinling Mountains (Vanderwal, Shoo, Graham, & Williams, 2009).

Nineteen bioclimatic variables (at 30 s resolution) were extracted from the WorldClim database for both current (average for 1950–2000; available at <http://www.worldclim.org>) and future climatic conditions for 2050s (average for 2041–2060). The future climate data used for this study consisted of IPCC-CMIP₅ climate projection (Wu, Chen, & Wen, 2013) from the Met Office Hadley Center for atmosphere-ocean coupled model (HadGEM₂-AO) under the representative concentration pathway (RCP4.5). The average global temperature increase of 0.9–2.0 °C under RCP4.5 would fall within a 2 °C global warming limit for the 2050s (UNFCCC, 2015). The time horizon 2050s was selected because it represents a time far enough in the future for marked climatic changes to have taken place (Young et al., 2012).

Additional environmental variables were combined to create distribution models for Sichuan golden monkey (Appendix S2). The density of settlements, roads, and rivers were retrieved via a

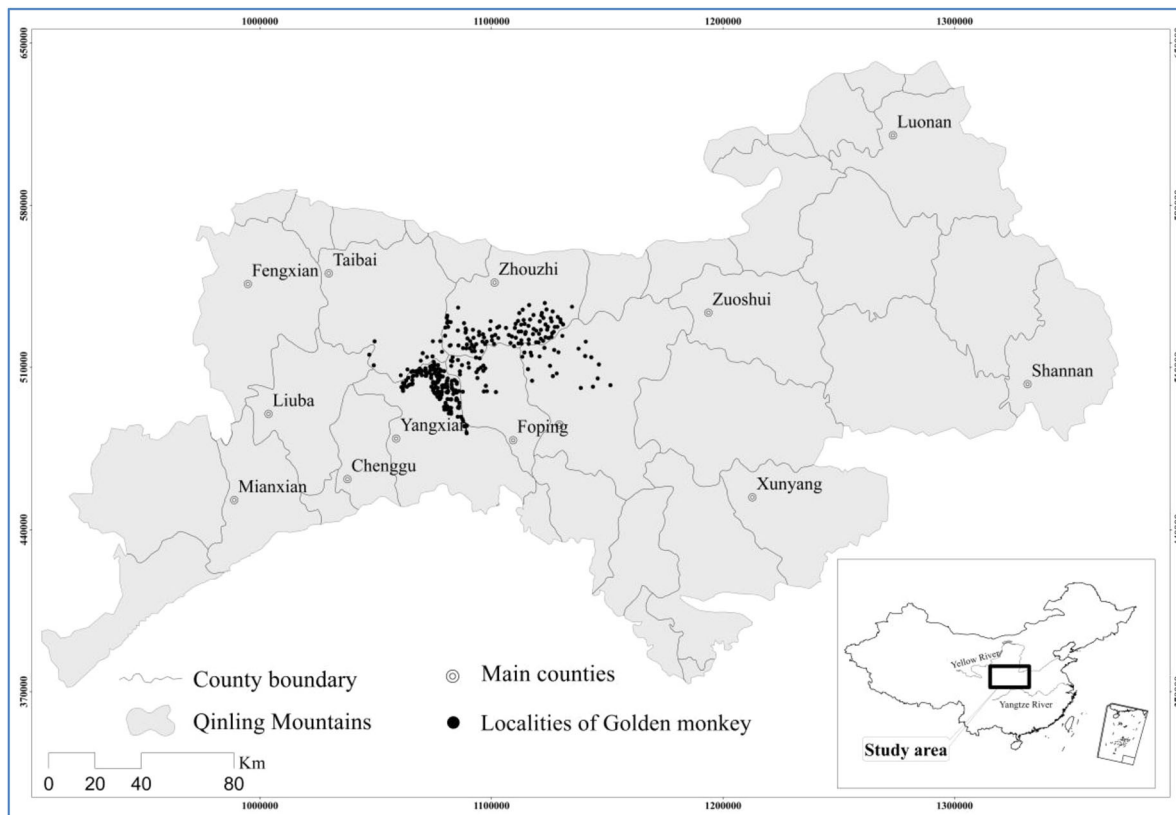


FIGURE 1 Localities of Sichuan golden monkey in Qinling Mountains

1:1,000,000 scaled map of China (National Geomatics Center of China, available at <http://atgcc.sbsm.gov.cn>). Elevation was obtained from a digital elevation model (DEM) at 30 s resolution, taken from the WorldClim database. Non-climate variables (i.e., density of settlements, roads, and rivers) are unavailable for 2050s, and thus we kept these variables static in our projections (Stanton, Pearson, Horning, Ersts, & Akçakaya, 2012).

Spatial variables was resampled to 1 km² resolution, and projected to the same projection (*Asia_North_Albers_Equal_Area_Conic*) by ArcGIS 10.1 (ESRI Inc., Redlands, CA). Multicollinearity of variables was reduced, by eliminating relational variables where Pearson's $|r| > 0.8$ (Appendix S3; Cord, Klein, Mora, & Dech, 2014; Li, Liu, Xue, Zhang, & Li, 2017). We retained the most important biologically meaningful variables for building models.

2.3 | Habitat suitability model

Maximum entropy models (Maxent) are considered as very useful tool especially to predict species distribution with presence-only data (Elith, Phillips, Hastie, Dudík, & Chee, 2011; Phillips & Dudík, 2008). We ran Maxent with the following settings: random test percentage (25%), regularization multiplier (1). We ran 15 replicates and conducted a subsample type (Vedel-Sørensen, Tovaranton, Bøcher, Balslev, & Barfod, 2013) with other recommended default settings (Phillips et al., 2006; Phillips & Dudík 2008). Maxent also estimated the importance of variables based on the percent contribution (Jenks et al., 2012).

We used the area under the receiver operating characteristic curve (AUC) which is threshold-independent to measure model performance. The AUC ranges from 0 to 1, with a value of 1 signifying perfect model performance (Phillips et al., 2006). The Maxent output consisted of continuous values between 0 and 1 representing species' occurrence probabilities. We converted these values to presence and absence, based upon threshold values in which sensitivity equals specificity (Liu, Berry, Dawson, & Pearson, 2005; Tytar, Mezhzherin, & Sobolenko, 2015). Cells with probability values greater than the threshold value were considered as suitable habitat for the species. We next withdrew patches with area <7.4 km² and distance from the nearest patch >2.1 km based on the minimum home range size and daily path length of the species (Tan, Guo, & Li, 2007). A Mann-Whitney *U*-test was used to assess the difference in average suitable habitat elevation between current and the 2050s. Statistical analyses were carried out with SPSS 19.0 software (IBM Inc., New York, NY).

2.4 | Gap analysis of nature reserves

Gap analysis serves as the first step in assessing biodiversity on a coarse-filter scale (Li et al., 2016; Scott et al., 1993). Suitable habitats, both current and future, were overlapped with nature reserve borders to investigate the ability of these reserves in promoting conservation through protection of Sichuan golden monkey post-climate change events (Feeley & Silman, 2016).

2.5 | Vulnerability assessment

We assessed changes in available suitable habitat between the present time frame and the 2050s and specified the habitat into the following categories:

1. Vulnerable habitat: the area in which current suitable habitat was projected to be unsuitable in the 2050s;
2. Climatic refuge: the area where current suitable habitat overlapped with predicted suitable habitat for the 2050s;
3. New suitable habitat: the area where current unsuitable habitat was predicted to become suitable by the 2050s;
4. Unsuitable habitat: the area where current unsuitable habitat overlapped with habitat predicted to remain unsuitable for the 2050s.

Three indicators were used to examine climate change impacts on suitability of Sichuan golden monkey habitat: (i) percentage of area change (AC); (ii) percentage of current suitable habitat area loss (SH_c);

and (iii) percentage of increased suitable habitat area for the 2050s' (SH_f) (Duan, Kong, Huang, Sara, & Xiang, 2016; Li, Liu, et al., 2017; Thuiller, Lavorel, & Araujo, 2005). Indicators were calculated as follows:

$$AC = (A_f - A_c) / A_c \times 100\% \quad (1)$$

$$SH_c = (A_c - A_{fc}) / A_c \times 100\% \quad (2)$$

$$SH_f = (A_f - A_{fc}) / A_f \times 100\% \quad (3)$$

For the formulas above, A_f is the predicted area of suitable habitat considering the 2050s' climatic scenario for Sichuan golden monkey; A_c is the predicted area of current suitable habitat; and A_{fc} is the area of suitable habitat found for both the current and the 2050s' scenario.

2.6 | Habitat corridor analysis

Graph theory has become a popular tool for modeling the connectivity between suitable habitat patches (Foltête, Clauzel, & Vuidel, 2012;

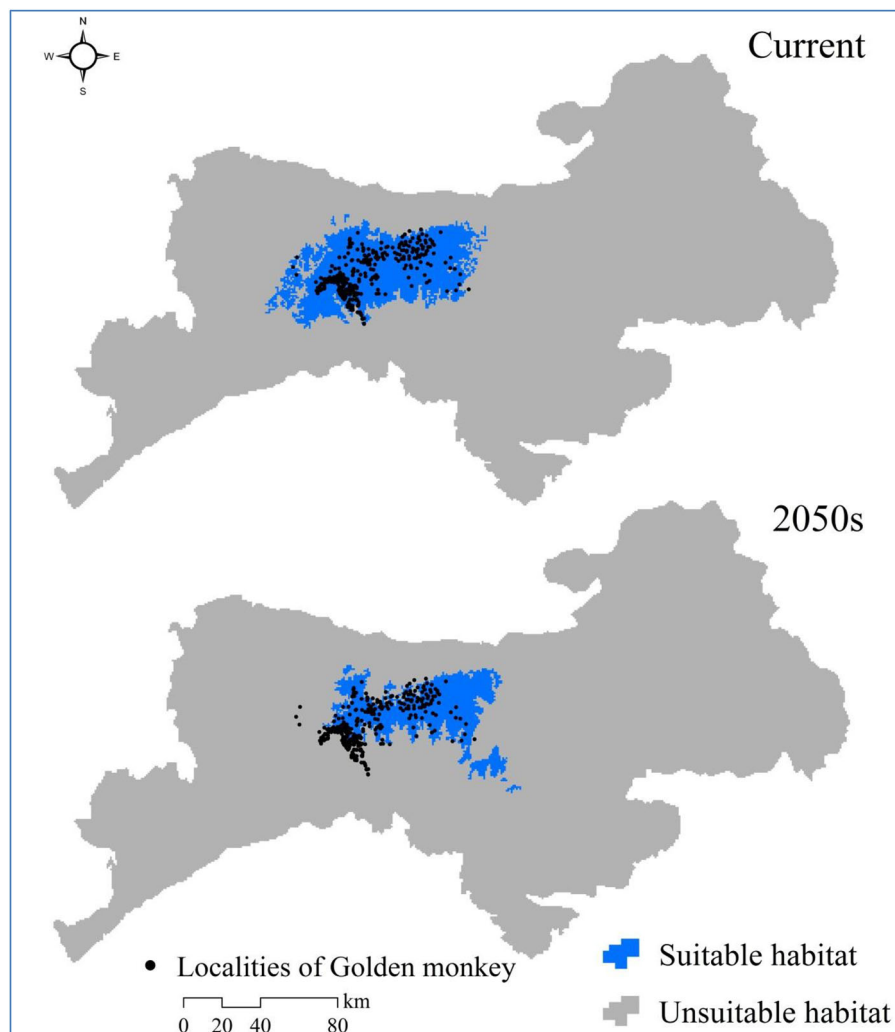


FIGURE 2 Predicted suitable habitat of Sichuan golden monkey under current and the 2050s' climate scenarios in Qinling Mountains

Foltête, Clauzel, Vuidel, & Tournant, 2012). We respectively used the inverse of the habitat suitability map as a resistance surface (Wang et al., 2014) and identified least-cost paths (Li, Clauzel, et al., 2017) to identify the current and future potential habitat corridors for Sichuan golden monkey. All analyses were performed using Graphab 2.2 software (available at <https://sourcesup.renater.fr/graphab/en/home.html>) (Clauzel, Deng, Wu, Giraudoux, & Li, 2015).

3 | RESULTS

3.1 | Species distribution model

Distribution models for Sichuan golden monkey were made with eight variables (Appendix S2). The average training AUC value was 0.985 ± 0.0001 and the average testing AUC value was 0.982 ± 0.004 . The percent contribution of model variables ranked from the highest to the lowest were: mean diurnal range (24.1%), density of rivers (23.4%), precipitation seasonality (20%), density of roads (15.9%), annual precipitation (8.7%), minimum temperature of coldest month (4.4%), density of settlements (3.1%), and elevation (0.3%). The average threshold value for probability of presence at sensitivity equals specificity was 0.204. We classified cells with probability values greater than 0.204 as suitable habitat for the species.

3.2 | Change in suitable habitat

The area of current suitable Sichuan golden monkey habitat is 4,580 km², and mainly distributed in Chenggu, Foping, Huxian, Ningshang, Yangxian, Taibai, and Zhouzhi counties (Figure 2). By the 2050s, the areas of suitable habitat were predicted to be 2,880 km² with a reduction of 37% area (AC) (Figure 2). The mean elevation of suitable habitat in the 2050s was predicted to be $1,947 \pm 332$ m, which was significantly higher ($Z = -22.28$, $P \leq 0.001$) than that of current suitable habitat ($1,786 \pm 362$ m).

3.3 | Coverage of nature reserves

The results revealed that current nature reserves protected 62% of the current suitable habitat area and 56% of the 2050s' suitable habitat area (Figure 3). However, Sichuan golden monkey was predicted to suffer habitat loss across twelve nature reserves by the 2050s, with the loss of suitable habitat area ranging from 10% to 100% (Table 1).

3.4 | Vulnerability assessment

Our model predicted that 2,247 km² ($SH_c = 49\%$) of current suitable habitat for Sichuan golden monkey would be vulnerable to climate change. Unchanged suitable habitat (i.e., climatic refuge) covers an area of 2,333 km². Interestingly, our results suggest there will be an increase in suitable habitat (new suitable habitat, 555 km², $SH_f = 19\%$) in Ningshan county (Figure 4).

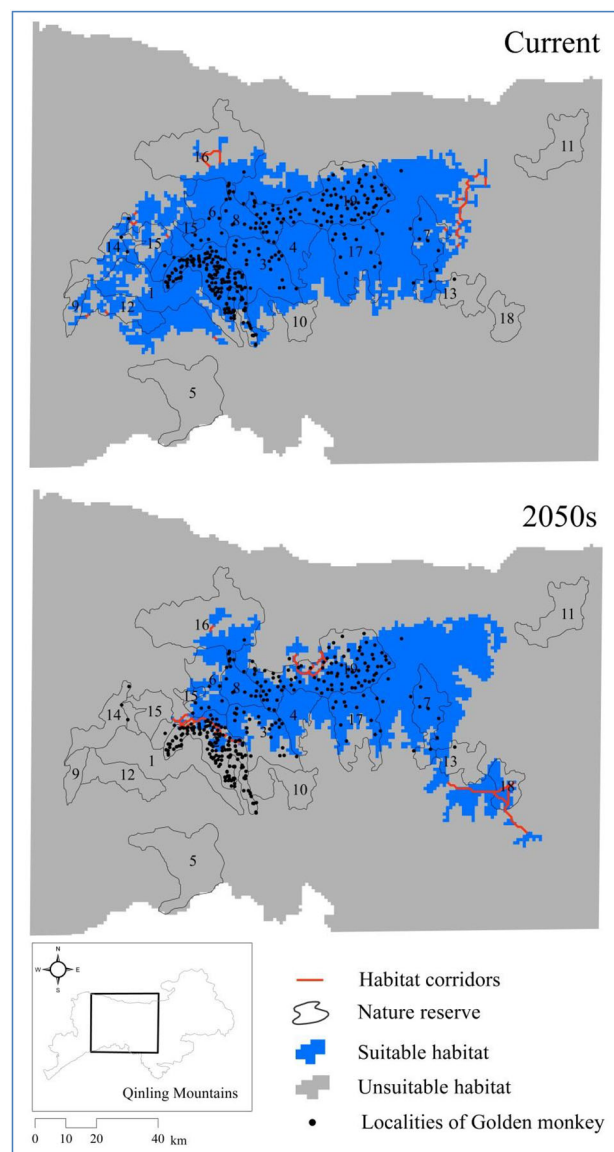


FIGURE 3 Gaps between nature reserves for conserving Sichuan golden monkey, and suitable habitat patches of species connected by least-cost paths in Qinling Mountains

3.5 | Potential habitat corridors

Suitable habitat patches for Sichuan golden monkey that connected by least-cost paths representing potential movement paths between patches. The graphab modeling presented 23 least-cost paths between current Sichuan golden monkey's suitable habitat, and 32 paths in future (Figure 3).

4 | DISCUSSION

Our model projected that, even under a mild climate change scenario, there would be 49% of reduction in suitable habitat area for the Sichuan golden monkeys in the Qinling Mountains. The IUCN suggests that species having a predicted loss of 30–50% in suitable habitat should be considered threatened (IUCN, 2001). Since the Sichuan

TABLE 1 Projected change in suitable habitat of Sichuan golden monkey in nature reserves

Code	Nature reserve	Suitable habitat area/(km ²)		Percentage of area change (AC) (%)
		Current	2050s	
1	Banqiao	261.75	0.00	-100.00
2	Changqing	305.86	76.53	-74.98
3	Foping	300.35	148.01	-50.72
4	Guanyinshan	148.44	132.06	-11.04
5	Hanzhongzhuhuan	-	-	-
6	Huangbaiyuan	205.42	136.77	-33.42
7	Huangguanshan	175.55	166.85	-4.96
8	Laoxiancheng	120.57	118.75	-1.51
9	Motianling	19.20	0.00	-100.00
10	Niangniangshan	77.04	0.00	-100.00
11	Niubeiliang	-	-	-
12	Panlong	117.96	0.00	-100.00
13	Pingheliang	11.27	21.04	86.63
14	Sangyuan	66.88	0.00	-100.00
15	Taibainiweihe	92.86	8.47	-90.88
16	Taibaishan	126.44	129.33	2.29
17	Tianhuashan	285.70	196.64	-31.17
18	Yingzuishi	-	68.14	100.00
19	Zhouzhi	522.43	422.34	-19.16

golden monkeys were predicted to lose 49% of suitable habitat, the species would be specified as threatened according to above IUCN suggestion and conservation actions are needed.

Based on our results, habitat connectivity in the southwestern portion of Qinling Mountains was relatively low, and this area was predicted to lose the greatest area of suitable habitat by the 2050s. Thus, effective conservation strategies for this area should include the construction of corridors for the species to disperse between suitable habitat patches. At the same time, the new suitable habitats of Sichuan golden monkeys are projected to occur in Ningshan County. However, Sichuan golden monkey will be impeded by natural and artificial barriers (e.g., rivers, agriculture, logging, and roads; Fan et al., 2011; Li et al., 2002; Sun et al., 2007) if they attempt to expand to new suitable habitats in the future. Thus, we propose proactive measures (e.g., forestry planning) to improve the connectivity of habitat, and constructing migration corridors to assist populations of Sichuan golden monkey to expand to and utilize these new habitats in the future.

Nature reserves are a key component in conservation, yet they are under increasing threats from rapid climate change (Gross, Watson, Woodley, Welling, & Harmon, 2015; Nori et al., 2016). Most nature reserves were established decades ago without considering the impact of climate change (Araújo, Alagador, Cabeza, Nogues-Bravo, & Thuiller, 2011; Li et al., 2015), and conservation effectiveness of these reserves will be negatively affected by climate change. The results revealed that current nature reserves protected 62% of the current suitable habitat area and 56% of the 2050s' suitable habitat area (Figure 3). However,

Sichuan golden monkey was predicted to suffer more than 10% habitat loss across 12 nature reserves by the 2050s (Table 1). Three nature reserves (i.e., Huangguanshan, Pingheliang, and Yingzuishi) are isolated from other nature reserves and they currently protect a small population of Sichuan golden monkeys (Gao & Kang, 2007; Meng, 2008), thus in advance of habitat corridors construction should be conservation planning for those nature reserves facing climate change.

Assessments of vulnerability can provide information regarding future impacts of climate conditions on species (Pacifiçi et al., 2015), thereby allowing managers to make appropriate conservation action plans (Arribas et al., 2012). Our results identify the possible climatic refuges for Sichuan golden monkey within Qinling Mountain range, and will provide scientific data which can be used to take into account in establishing new national parks for protecting the species. Protection of these areas will facilitate the long-term survival of this species.

Validation of our model revealed that there was good concordance between the known distribution of Sichuan golden monkey in Qinling Mountains and the suitable habitat predicted by the model. Nevertheless, there are limitations and uncertainties. First, habitat for Sichuan golden monkeys is affected by many other physical and biological factors. However, data on spatial variation of these other biotic and abiotic factors within our study area are limited, which restricted our choice of variables for building the models. Second, our findings highlighted the risks of ignoring the intersection of ecology process and dynamic threats in response to climate change for Sichuan golden monkey. Though we could not include all variables in the model,

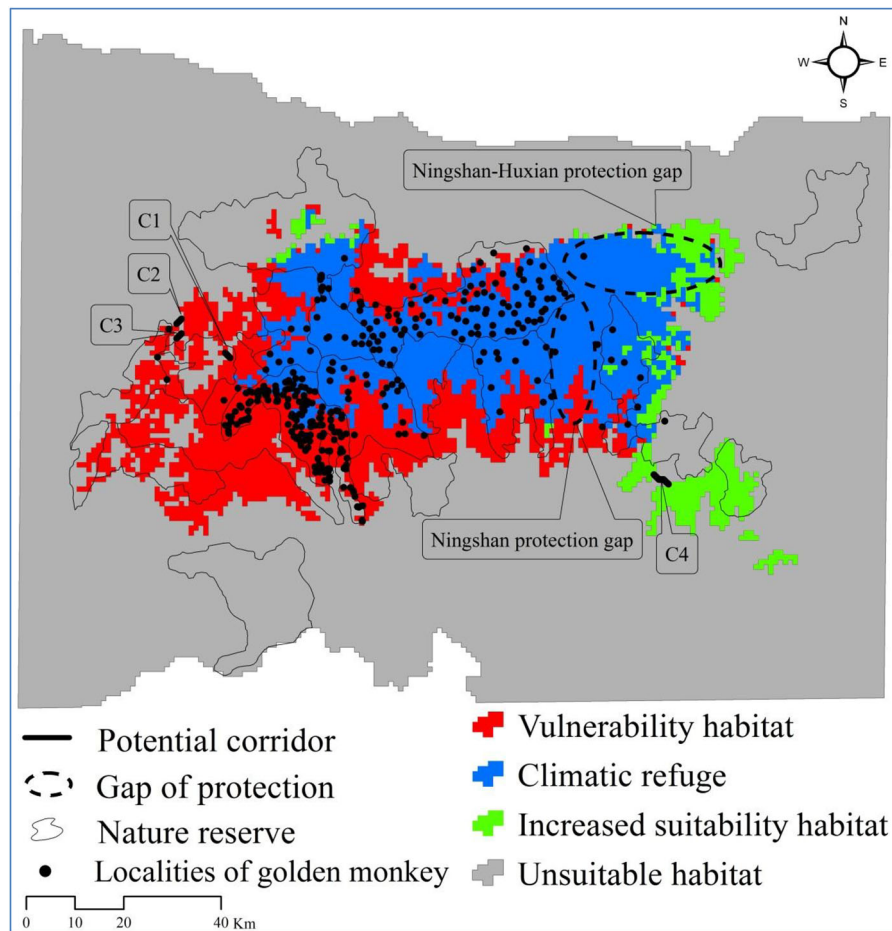


FIGURE 4 Vulnerability levels of suitable habitat for Sichuan golden monkey, and protection gaps and potential corridors for species in the Qinling Mountains. C1–C4 indicate locations for constructing habitat corridors

our results represented the reliable analysis of the impacts of climate change on golden species' distributions and are based on the best data available for the species. We believe that it is likely a good representation of how climate change will affect the patterns and distributions of Sichuan golden monkey's habitat.

5 | CONSERVATION IMPLICATIONS

As a species of public interest and national pride, Sichuan golden monkey is a focus of conservation effort (Chang et al., 2012; Huang et al., 2016; Xu et al., 2014). The government of China has listed the Qinling Mountains as priority areas for biodiversity conservation plans (2011–2030) (Ministry of Environmental Protection, 2011), and will establish a national park to further strengthen conservation for giant panda and other species including Sichuan golden monkey in the Qinling Mountain range (State Forestry Administration, 2016). Thus, our assessment of the vulnerability of Sichuan golden monkey provides valuable information for formulating strategies to meet the future challenges brought on by climate change. To help mitigate the impacts of climate change on Sichuan golden monkey in the Qinling Mountains, we propose the following recommendations.

5.1 | Including new suitable habitat into planning of the national park

Suitable habitat for Sichuan golden monkey predicted for 2050s revealed large gaps in the conservation network (Figure 4). The gaps in Ningshan county should be covered by the proposed national park to improve habitat connectivity for the species.

5.2 | Establishing habitat corridors

Although we produced a map of least-cost paths for Sichuan golden monkey's movement, the establishment of all potential corridors will be a long-term process, which does not meet the urgent needs for conserve Sichuan golden monkey. Perhaps first and foremost, promoting habitat corridors should be based on (i) increasing chances for the known isolated populations to shift to larger suitable habitat patches in Taibai county (C1, C2, and C3) and (ii) assisting dispersal of population to new suitable habitat in 2050s in Ningshan county (C4; Figure 4).

5.3 | Strengthening monitoring on Sichuan golden monkey

Many nature reserves were in preliminary stages of adopting strategies for the repercussions of climate change when their

master plans were formulated (Xu et al., 2017). However, it is at the time impossible to fully understand how the species will respond to current strategies and what management measures will be most effective. Therefore, long-term standardized monitoring programs should be carried out after the new Qinling National Park is established to monitor the changes in populations and habitats of this endangered species which was predicted to be vulnerable to climate change.

ACKNOWLEDGMENTS

This research was supported by National Science & Technology Pillar Program for the Twelfth Five-year Plan Period (Project title: Technology of Habitat Assessment and Restoration for Shennongjia Golden Monkey; Project ID: 2013BAD03B03) and Project Funded by China Postdoctoral Science Foundation (Project ID: 2018M631624). We thank all staff of the Changqing nature reserve for helping us to collect occurrence data of Sichuan golden monkey. We thank Qing Zhao, William McShea, Yu Zhang, Yuyu Sheng, and Charlotte Hacker for their valuable suggestions for the manuscript.

CONFLICTS OF INTEREST

The authors declare no conflict of interest.

ORCID

Jia Li  <http://orcid.org/0000-0002-0794-4376>

REFERENCES

- Araújo, M. B., Alagador, D., Cabeza, M., Nogues-Bravo, D., & Thuiller, W. (2011). Climate change threatens European conservation areas. *Ecology Letter*, 14(5), 484–482. <https://doi.org/10.1111/j.1461-0248.2011.01610.x>
- Arribas, P., Abellán, P., Velasco, J., Bilton, D. T., Millán, A., & Sánchez-Fernández, D. (2012). Evaluating drivers of vulnerability to climate change: A guide for insect conservation strategies. *Global Change Biology*, 18(7), 2135–2146. <https://doi.org/10.1111/j.1365-2486.2012.02691.x>
- Bagne K. E., Friggins M. M., & Finch D. M. (2011). *A System for Assessing Vulnerability of Species (SAVS) to climate change*. Gen. Tech. Rep. RMRS-GTR-257. Fort Collins, CO: U.S. Department of Agriculture, Forest Service, Rocky Mountain Research Station.
- Balzotti, C. S., Kitchen, S. G., & Mccarthy, C. (2016). Beyond the single species climate envelope: A multifaceted approach to mapping climate change vulnerability. *Ecosphere*, 7(9), e01444. <https://doi.org/10.1002/ecs2.1444>
- Bellard, C., Bertelsmeier, C., Leadley, P., Thuiller, W., & Courchamp, F. (2012). Impacts of climate change on the future of biodiversity. *Ecology Letters*, 15(4), 365–377. <https://doi.org/10.1111/j.1461-0248.2011.01736.x>
- Brown, C. J., O'Connor, M. I., Poloczanska, E. S., Schoeman, D. S., Buckley, L. B., Burrows, M. T., ... Parmesan, C. (2016). Ecological and methodological drivers of species' distribution and phenology responses to climate change. *Global Change Biology*, 22(4), 1548–1560. <https://doi.org/10.1111/gcb.13184>
- Chang, Z. F., Luo, M. F., Liu, Z. J., Yang, J. Y., Xiang, Z. F., Li, M., & Vigilant, L. (2012). Human influence on the population decline and loss of genetic diversity in a small and isolated population of Sichuan snub-nosed monkeys (*Rhinopithecus roxellana*). *Genetica*, 140(4–6), 105–114. <https://doi.org/10.1007/s10709-012-9662-9>
- Charmantier, A., & Gienapp, P. (2014). Climate change and timing of avian breeding and migration: Evolutionary versus plastic changes. *Evolutionary Applications*, 7(1), 15–28. <https://doi.org/10.1111/eva.12126>
- Clauzel, C., Deng, X., Wu, G., Giraudoux, P., & Li, L. (2015). Assessing the impact of road developments on connectivity across multiple scales: Application to Yunnan snub-nosed monkey conservation. *Biological Conservation*, 192, 207–217. <https://doi.org/10.1016/j.biocon.2015.09.029>
- Cord, A. F., Klein, D., Mora, F., & Dech, S. (2014). Comparing the suitability of classified land cover data and remote sensing variables for modeling distribution patterns of plants. *Ecological Modelling*, 272, 129–140. <https://doi.org/10.1016/j.ecolmodel.2013.09.011>
- Duan, R. Y., Kong, X. Q., Huang, M. Y., Sara, V., & Xiang, J. (2016). The potential effects of climate change on amphibian distribution, range fragmentation and turnover in China. *PeerJ*, 4, e2185. <https://doi.org/10.7717/peerj.2185>
- Elith, J., Phillips, S., Hastie, T., Dudík, M., & Chee, Y. E. (2011). A statistical explanation of MaxEnt for ecologists. *Diversity and Distribution*, 17(1), 43–57. <https://doi.org/10.1111/j.1472-4642.2010.00725.x>
- Fan, J. T., Li, J. S., Quan, Z. J., Wu, X. P., Hu, L. L., & Yang, Q. P. (2011). Impact of road construction on giant panda's habitat and its carrying capacity in Qinling Mountains. *Acta Ecologica Sinica*, 31(3), 145–149. <https://doi.org/10.16/j.chnaes.2011.03.003>
- Fang, Z., Xu, W. H., Zhang, J. J., Xiao, Y., & Zhang, L. (2017). Designing protected area systems in the Qinling Mountains based on biodiversity and ecosystem service evolution. *Acta Ecologica Sinica*, 37(16), 5334–5341. <https://doi.org/10.5846/stxb201605230993>
- Feeley, K. J., & Silman, M. R. (2016). Disappearing climates will limit the efficacy of Amazonian protected areas. *Diversity and Distributions*, 22(11), 1081–1084. <https://doi.org/10.1111/ddi.12475>
- Foden, W. B., Young, B. E., & Watson, J. (2016). Chapter 1. introduction. using CCVAs and interpreting their results. In W. B. Foden & B. E. Young (Eds.), *IUCN SSC guidelines for assessing species' vulnerability to climate change. version 1.0. occasional paper of the IUCN species survival commission No. 59*. Gland, Switzerland and Cambridge, UK: Langham Press.
- Foltête, J. C., Clauzel, C., & Vuidel, G. (2012). A software tool dedicated to the modelling of landscape networks. *Environmental Modelling & Software*, 38(4), 316–327. <https://doi.org/10.1016/j.envsoft.2012.07.002>
- Foltête, J. C., Clauzel, C., Vuidel, G., & Tournant, P. (2012). Integrating graph-based connectivity metrics into species distribution models. *Landscape Ecology*, 27(4), 557–569. <https://doi.org/10.1007/s10980-012-9709-4>
- Forrest, J. L., Wikramanayake, E., Shrestha, R., Areendran, G., Gyeltshen, K., Maheshwari, A., ... Thapa, K. (2012). Conservation and climate change: Assessing the vulnerability of snow leopard habitat to treeline shift in the Himalaya. *Biological Conservation*, 150(1), 129–135. <https://doi.org/10.1016/j.biocon.2012.03.001>
- Gao, X. B., & Kang, Y. X. (2007). *Shanxi Huangguanshan Nature Reserve Scientific Survey Report*. Xi'an: Shaanxi Science and Technology Press (p. 187).
- García, R. A., Cabeza, M., Rahbek, C., & Araújo, M. B. (2014). Multiple dimensions of climate change and their implications for biodiversity. *Science*, 344(6183), 1247579. <https://doi.org/10.1126/science.1247579>

- Gross, J., Watson, J. E. M., Woodley, S., Welling, L., & Harmon, D. (2015). *Responding to climate change: Guidance for protected area managers and planners. Best practice protected area guidelines series No. xx.* Gland, Switzerland: IUCN.
- Guisan, A., Tingley, R., Baumgartner, J. B., Naujokaitislewis, I., Sutcliffe, P. R., Tulloch, A. I., ... Mantyka-pringle, C. (2013). Predicting species distributions for conservation decisions. *Ecology Letters*, 16(12), 1424–1435. <https://doi.org/10.1111/ele.12189>
- Guo, S., Ji, W., Li, B., & Li, M. (2008). Response of a group of Sichuan snub-nosed monkeys to commercial logging in the Qinling Mountains, China. *Conservation Biology*, 22(4), 1055–1064. <https://doi.org/10.1111/j.1523-1739.2008.00975.x>
- Huang, K., Guo, S., Cushman, S. A., Dunn, D. W., Qi, X., Hou, R., ... Shi, Z. (2016). Population structure of the golden snub-nosed monkey *Rhinopithecus roxellana* in the Qinling Mountains, Central China. *Integrative Zoology*, 11(5), 350–360. <https://doi.org/10.1111/1749-4877.12202>
- (IPCC) Intergovernmental Panel on Climate Change. (2014). Climate change 2014: impacts, adaptation, and vulnerability. *Contribution of working group II to the fifth assessment report of the intergovernmental panel on climate change (Eds), part A: Global and sectoral aspects.* Cambridge, United Kingdom and New York, NY, USA: Cambridge University Press.
- IUCN (International Union for Conservation of Nature and Natural Resources). (2001). *IUCN red list categories and criteria: Version 3.1. IUCN Species Survival Commission.* Gland, Switzerland and Cambridge, UK: IUCN.
- Jenks, K. E., Kitamura, S., Lynam, A. J., Ngoprasert, D., Chutipong, W., Steinmetz, R., ... Songsasen, N. (2012). Mapping the distribution of dholes, *Cuon alpinus* (Canidae, Carnivora), in Thailand. *Mammalia*, 76(2), 175–184. <https://doi.org/10.1515/mammalia-2011-0063>
- Kramer-Schadt, S., Niedballa, J., Pilgrim, J. D., Schröder, B., Lindenborn, J., Reinfelder, V., ... Wilting, A. (2013). Importance of correcting for sampling bias in MaxEnt species distribution models. *Diversity and Distributions*, 19(11), 1366–1379. <https://doi.org/10.1111/ddi.12096>
- Li, B. G., Chen, C., Ji, W. H., & Ren, B. P. (2000). Seasonal home range changes of the Sichuan snub-nosed monkey (*Rhinopithecus roxellana*) in the Qinling Mountains of China. *Folia Primatologica*, 71(6), 375–386. <https://doi.org/10.1159/000052734>
- Li, B., He, P., Yang, X., Wei, W., Ren, B., Yang, J. Y., ... Liu, Y. P. (2001). The present status of the Sichuan snub-nosed monkey in the Qinling Mountains of China, and a proposed conservation strategy for the species. *Biosphere Conservation*, 3(2), 107–114. https://doi.org/10.20798/biospherecons.3.2_107
- Li, B., Pan, R., & Oxnard, C. E. (2002). Extinction of snub-nosed monkeys in China during the past 400 years. *International Journal of Primatology*, 23(6), 1227–1244. <https://doi.org/0164-0291/02/1200-1227/0>
- Li, B. G., Jia, Z. Y., Pan, R. L., & Ren, B. P. (2003). Changes in distribution of the snub-nosed monkey in China. In L. K. Marsh (Ed.), *Primates in fragments: Ecology and conservation* (pp. 29–51). New York: Kluwer Academic Plenum Press.
- Li, J., McCarthy, T. M., Wang, H., Weckworth, B. V., Schaller, G. B., Mishra, C., ... Beissinger, S. R. (2016). Climate refugia of snow leopards in high Asia. *Biological Conservation*, 203, 188–196. <https://doi.org/10.1016/j.biocon.2016.09.026>
- Li, J., Liu, F., Xue, Y. D., Zhang, Y., & Li, D. Q. (2017). Assessing vulnerability of giant pandas to climate change in the Qinling Mountains of China. *Ecology and Evolution*, 7(11), 4003–4015. <https://doi.org/10.1002/ece3.2981>
- Li, W., Clauzel, C., Dai, Y., Wu, G., Giraudoux, P., & Li, L. (2017). Improving landscape connectivity for the Yunnan snub-nosed monkey through cropland reforestation using graph theory. *Journal for Nature Conservation*, 38, 46–55. <https://doi.org/10.1016/j.jnc.2017.06.002>
- Li, X. Y., Clinton, N., Si, Y. L., Liao, J. S., Liang, L., & Gong, P. (2015). Projected impacts of climate change on protected birds and nature reserves in China. *Chinese Science Bulletin*, 60(19), 1644–1653. <https://doi.org/10.1007/s11434-015-0892-y>
- Li, Y., Viña, A., Yang, W., Chen, X., Zhang, J., Ouyang, Z., ... Liu, J. (2013). Effects of conservation policies on forest cover change in giant panda habitat regions, China. *Land Use Policy*, 33, 42–53. <https://doi.org/10.1016/j.landusepol.2012.12.003>
- Liu, C., Berry, P. M., Dawson, T. P., & Pearson, R. G. (2005). Selecting thresholds of occurrence in the prediction of species distributions. *Ecography*, 28(3), 385–393. <https://doi.org/10.1111/j.0906-7590.2005.03957.x>
- Liu, F., Mcshea, W. J., & Li, D. (2016). Correlating habitat suitability with landscape connectivity: A case study of Sichuan golden monkey in China. *Ecological Modelling*, 353(10), 37–46. <https://doi.org/10.1016/j.ecolmodel.2016.09.004>
- Long, Y. & Richardson, M. (2008). *Rhinopithecus roxellana*. The IUCN red list of threatened species 2008: e.T19596A8985735. (Assessed on 2016-12-09).
- Luo, M. F., Liu, Z. J., Pan, H. J., Zhao, L., & Li, M. (2012). Historical geographic dispersal of the golden snub-nosed monkey (*Rhinopithecus roxellana*) and the influence of climatic oscillations. *American Journal of Primatology*, 74(2), 91–101. <https://doi.org/10.1002/ajp.21006>
- Luo, Z. H., Zhou, S. R., Yu, W. D., Yu, H. L., Yang, J. Y., Tian, Y. H., ... Wu, H. (2015). Impacts of climate change on the distribution of Sichuan Snub-Nosed Monkeys (*Rhinopithecus roxellana*) in Shennongjia area, China. *American Journal of Primatology*, 77(2), 135–151. <https://doi.org/10.1002/ajp.22317>
- Luo, Z., Yu, H., Pu, Y., Yang, J., Mei, H., Wang, D., ... Wu, H. (2016). Assessment of habitat fragmentation and corridors for an isolated subspecies of the Sichuan Golden snub-nosed monkey, *Rhinopithecus roxellana hubeiensis*. *International Journal of Primatology*, 37(3), 1–22. <https://doi.org/10.1007/s10764-016-9910-4>
- Meng, X. M. (2008). Distribution and conservation of mammal resources of Pingheliang Provincial Nature Reserve in Shaaxi Province. Thesis for Master Degree Northwest A&F University.
- Meserve, P. L., Kelt, D. A., Gutiérrez, J. R., Previtali, M. A., & Milstead, W. B. (2016). Biotic interactions and community dynamics in the semiarid thorn scrub of Bosque Fray Jorge National Park, North-Central Chile: A paradigm revisited. *Journal of Arid Environments*, 126, 81–88. <https://doi.org/10.1016/j.jaridenv.2015.08.016>
- Ministry of Environmental Protection. (2011). *China National Biodiversity Conservation Strategy and Action Plan.* Beijing: China Environmental Science Press.
- Nicotra, A. B., Beever, E. A., Robertson, A. L., Hofmann, G. E., & O'Leary, J. (2015). Assessing the components of adaptive capacity to improve conservation and management efforts under global change. *Conservation Biology*, 29, 1268–1278. <https://doi.org/10.1111/cobi.12522>
- Nori, J., Torres, R., Lescano, J. N., Cordier, J. M., Periago, M. E., & Baldo, D. (2016). Protected areas and spatial conservation priorities for endemic vertebrates of the Gran Chaco, one of the most threatened ecoregions of the world. *Diversity and Distributions*, 22(2), 1212–1219. <https://doi.org/10.1111/ddi.12497>
- Pacifici, M., Foden, W. B., Visconti, P., Watson, J. E. M., Butchart, S. H. M., Kovacs, K. M., ... Akçakaya, H. R. (2015). Assessing species vulnerability to climate change. *Nature Climate Change*, 5, 215–224. <https://doi.org/10.1038/nclimate2448>
- Pan W. S., Lu Z., Zhu X. J., Wang D. J., Wang H., Long Y., ... Zhou X. (2001). *A chance for lasting survival.* Beijing: Peking University Press.
- Phillips, S. J., Anderson, R. P., & Schapire, R. E. (2006). Maximum entropy modeling of species geographic distributions. *Ecological Modelling*, 190(3–4), 231–259. <https://doi.org/10.1016/j.ecolmodel.2005.03.026>

- Phillips, S. J., & Dudík, M. (2008). Modeling of species distribution with Maxent: New extensions and a comprehensive evaluation. *Ecography*, 31(2), 161–175. <https://doi.org/10.1111/j.2007.0906-7590.05203.x>
- Phillips, S. J., Dudík, M., Elith, J., Graham, G. H., Lehmann, A. L., Leathwick, J., & Ferrier, S. (2009). Sample selection bias and presence-only distribution models: Implications for background and pseudo-absence data. *Ecological Applications*, 19(1), 181–197. <https://doi.org/10.1890/07-2153.1>
- Radosavljevic, A., & Anderson, R. P. (2013). Making better Maxent models of species distributions: Complexity, overfitting and evaluation. *Journal of Biogeography*, 41(4), 629–643. <https://doi.org/10.1111/jbi.12227>
- Ribeiro, V., Werneck, F. P., & Machado, R. B. (2016). Distribution dynamics of South American savanna birds in response to Quaternary climate change. *Austral Ecology*, 41(7), 768–777. <https://doi.org/10.1111/aec.12363>
- Rowland, E. L., Davison, J. E., & Graumlich, L. J. (2011). Approaches to evaluating climate change impacts on species: A guide to initiating the adaptation planning process. *Environmental Management*, 47(3), 322–337. <https://doi.org/10.1007/s00267-010-9608-x>
- Schloss, C. A., Nuñez, T. A., & Lawler, J. J. (2012). Dispersal will limit ability of mammals to track climate change in the Western Hemisphere. *Proceedings of the National Academy of Sciences of the United States of America*, 109(22), 8606–8611. <https://doi.org/10.1073/pnas.1116791109>
- Scott, J. M., Davis, F., Csuti, B., Noss, R., Butterfield, B., Groves, C., ... Wright, R. G. (1993). Gap analysis: A geographic approach to protection of biological diversity. *Wildlife Monographs*, 123, 3–41.
- Shen, G., Pimm, S. L., Feng, C., Ren, G., Liu, Y., Xu, W., ... Xie, Z. (2015). Climate change challenges the current conservation strategy for the giant panda. *Biological Conservation*, 190, 43–50. <https://doi.org/10.1016/j.biocon.2015.05.004>
- Sinclair, S. J., White, M. D., & Newell, G. R. (2010). How useful are species distribution models for managing biodiversity under future climates? *Ecology & Society*, 15(1), 299–305. <https://doi.org/10.5751/ES-03089-150108>
- Stanton, J. C., Pearson, R. G., Horning, N., Ersts, P., & Akçakaya, H. R. (2012). Combining static and dynamic variables in species distribution models under climate change. *Methods in Ecology & Evolution*, 3(2), 349–357. <https://doi.org/10.1111/j.2041-210X.2011.00157.x>
- State Forestry Administration. (2016). Qinling protection should be open national park model. Retrieved from <http://www.forestry.gov.cn/main/72/content-912580.html> (Assessed 18 October 2016).
- Stenseth, N. C., Durant, J. M., Fowler, M. S., Matthysen, E., Adriaensen, F., Jonzén, N., ... Sheldon, B. C. (2015). Testing for effects of climate change on competitive relationships and coexistence between two bird species. *Proceedings Biological Sciences*, 282, 20141958. <https://doi.org/10.1098/rspb.2014.1958>
- Sun C. Q., Jin X. L., Yuan W., Wang W. Y., Cao Y. H., & Lu X. R. (2007). *The 3rd Comprehensive Survey Report on Giant Panda in Shaani Province*. Xi'an: Xi'an Map Press.
- Tan, C. L., Guo, S., & Li, B. (2007). Population structure and ranging patterns of *Rhinopithecus roxellana* in Zhouzhi National Nature Reserve, Shaanxi, China. *International Journal of Primatology*, 28(3), 577–591. <https://doi.org/10.1007/s10764-007-9147-3>
- Thuiller, W., Lavorel, S., & Araujo, M. B. (2005). Niche properties and geographical extent as predictors of species sensitivity to climate change. *Global Ecology and Biogeography*, 14(4), 347–357. <https://doi.org/10.1111/j.1466-822X.2005.00162.x>
- Tomotani, B. M., Gienapp, P., Beersma, D. G., & Visser, M. E. (2016). Climate change relaxes the time constraints for late-born offspring in a long-distance migrant. *Proceedings Biological Sciences*, 283(1893), 20161366. <https://doi.org/10.1098/rspb.2016.1366>
- Townsend, A. K., Cooch, E. G., Sillett, T. S., Rodenhouse, N. L., Holmes, R. T., & Webster, M. S. (2016). The interacting effects of food, spring temperature, and global climate cycles on population dynamics of a migratory songbird. *Global Change Biology*, 22(2), 544–555. <https://doi.org/10.1111/gcb.13053>
- Tytar, V., Mezhzherin, S., & Sobolenko, L. (2015). Using ecological niche modeling for biodiversity conservation guidance in the Western Podillya (UKRAINE): Amphibians. *Vestnik Zoologii*, 49(2), 135–144. <https://doi.org/10.1515/vzoo-2015-0015>
- Uboni, A., Horstkotte, T., Kaarlejärvi, E., Sévêque, A., Stammler, F., Olofsson, J., ... Moen, J. (2016). Long-term trends and role of climate in the population dynamics of Eurasian reindeer. *PLoS ONE*, 11(6), e0158359. <https://doi.org/10.1371/journal.pone.0158359>
- UNFCCC. (2015). Adoption of the Paris agreement. Report No. FCCC/CP/2015/L.9/Rev.1, <http://unfccc.int/resource/docs/2015/cop21/eng/109r01.pdf>
- Urban, M. C. (2015). Accelerating extinction risk from climate change. *Science*, 348, 571–573. <https://doi.org/10.1126/science.aaa4984>
- Vanderwal, J., Shoo, L. P., Graham, C., & Williams, S. E. (2009). Selecting pseudo-absence data for presence-only distribution modeling: How far should you stray from what you know? *Ecological Modelling*, 220(4), 589–594. <https://doi.org/10.1016/j.ecolmodel.2008.11.010>
- Vedel-Sørensen, M., Tovarante, J., Bøcher, P. K., Balslev, H., & Barfod, A. S. (2013). Spatial distribution and environmental preferences of 10 economically important forest palms in Western South America. *Forest Ecology and Management*, 307, 284–292. <https://doi.org/10.1016/j.foreco.2013.07.005>
- Wang, F., Mcshea, W. J., Wang, D., Li, S., Zhao, Q., Wang, H., & Lu, Z. (2014). Evaluating landscape options for corridor restoration between giant panda reserves. *PLoS ONE*, 9(8), e105086.
- Waples, R. S., & Audzijonyte, A. (2016). Fishery-induced evolution provides insights into adaptive responses of marine species to climate change. *Frontiers in Ecology and the Environment*, 14(4), 217–224. <https://doi.org/10.1371/journal.pone.0105086>
- Wheatley, C. J., Beale, C. M., Bradbury, R. B., Pearce-Higgins, J. W., Crithlow, R., & Thomas, C. D. (2017). Climate change vulnerability for species—Assessing the assessments. *Global Change Biology*, 23(9), 3704–3715. <https://doi.org/10.1111/gcb.13759>
- Willis, S. G., Foden, W., Baker, D. J., Belle, E., Burgess, N. D., Carr, J. A., ... Hof, C. (2015). Integrating climate change vulnerability assessments from species distribution models and trait-based approaches. *Biological Conservation*, 190, 167–178. <https://doi.org/10.1016/j.biocon.2015.05.001>
- Wu, R. G., Chen, J. P., & Wen, Z. P. (2013). Precipitation-surface temperature relationship in the IPCC CMIP5 models. *Advances in Atmospheric Sciences*, 30(3), 766–778. <https://doi.org/10.1007/s00376-012-2130-8>
- Xu, W., Xiao, Y., Zhang, J., Yang, W., Zhang, L., Hull, V., ... Ouyang, Z. Y. (2017). Strengthening protected areas for biodiversity and ecosystem services in China. *Proceeding of the National Academy of Sciences of the United States of American*, 114, 1601–1606. <https://doi.org/10.1073/pnas.1620503114>
- Xu, W., Viña, A., Qi, Z., Ouyang, Z., Liu, J., Wei, L., & Hui, W. (2014). Evaluating conservation effectiveness of nature reserves established for surrogate species: Case of a giant panda

- nature reserve in Qinling Mountains, China. *Chinese Geographical Science*, 24(1), 60–70. <https://doi.org/10.1007/s11769-014-0656-7>
- Young, B. E., Hall, K. R., Byers, E., Gravuer, K., Hammerson, G., Redder A., & Szabo, K. (2012). Rapid assessment of plant and animal vulnerability to climate change. In J. F. Brodie, E. Post, & D. Doak (Eds.), *Wildlife conservation in a changing climate* (pp. 129–150). Chicago, IL: University of Chicago Press.
- Zhang, P. C., Shao, G. F., Zhao, G., Master, D. C. L., Parker, G. R., Dunning, J. B., & Li, Q. L. (2007). China's forest policy for the 21st century. *Science*, 288(5474), 2135–2136. <https://doi.org/10.1126/science.288.5474.2135>
- Zhao, N. X., Zhang, X. M., & Dong, W. (2014). *Field guide to nature history and wildlife of Qinling Mountains*. Beijing: Encyclopedia of China Publishing House.

SUPPORTING INFORMATION

Additional supporting information may be found online in the Supporting Information section at the end of the article.

How to cite this article: Li J, Li D, Xue Y, Wu B, He X, Liu F. Identifying potential refugia and corridors under climate change: A case study of endangered Sichuan golden monkey (*Rhinopithecus roxellana*) in Qinling Mountains, China. *Am J Primatol*. 2018;80:e22929. <https://doi.org/10.1002/ajp.22929>