

Effect of ferric carboxymaltose on calculated plasma volume status and clinical congestion: a FAIR-HF substudy

Darlington O. Okonko^{1,2*}, Fadi Jouhra², Huda Abu-Own², Gerasimos Filippatos³, Josep Comin Colet^{4,5}, Chainey Suki⁶, Claudio Mori⁶, Piotr Ponikowski⁷, Stefan D. Anker^{8,9} and for the FAIR-HF Investigators

¹School of Cardiovascular Medicine and Sciences, James Black Centre, King's College London British Heart Foundation Centre of Excellence, London, UK; ²King's College Hospital, London, UK; ³National and Kapodistrian University of Athens, Attikon University Hospital, Athens, Greece; ⁴Hospital del Mar (Parc de Salut Mar), Barcelona, Spain; ⁵Universitat Autònoma de Barcelona, Barcelona, Spain; ⁶Vifor Pharma Ltd, Glattbrugg, Switzerland; ⁷Medical University, Wrocław, Poland; ⁸Division of Cardiology and Metabolism–Heart Failure, Cachexia & Sarcopenia, Department of Cardiology (CVK); and Berlin-Brandenburg Center for Regenerative Therapies (BCRT); Deutsches Zentrum für Herz-Kreislauf-Forschung (DZHK) Berlin, Charité Universitätsmedizin Berlin, Berlin, Germany; ⁹Department of Cardiology and Pneumology, University Medicine Göttingen, Göttingen, Germany

Abstract

Aims Iron deficiency worsens symptoms, quality of life, and exercise capacity in chronic heart failure (CHF) and might do so by promoting fluid retention. We assessed whether iron repletion improved congestion in CHF and appraised the prognostic utility of calculated plasma volume status (PVS), a novel index of congestion, in the FAIR-HF data set.

Methods and results In FAIR-HF, 459 iron deficient CHF patients were randomized to intravenous ferric carboxymaltose (FCM) or saline and assessed at 4, 12, and 24 weeks. Using weight and haematocrit, we calculated PVS in 436 patients. At baseline, PVS and weight were $-5.5 \pm 7.7\%$ and 76.9 ± 14.3 kg, with peripheral oedema evident in 35% of subjects. Higher PVS values correlated to other congestion surrogates such as lower serum albumin. At 4 weeks, FCM was associated with greater reductions in weight (0.02) and PVS ($P < 0.0001$), and a trend for improved peripheral oedema at 24 weeks (0.07). Irrespective of treatment allocation, patients with a decrease in PVS from baseline to week 24 had higher increments in 6 min walking distance (61.4 m vs. 43.5 m, 0.02) and were more likely to improve their NYHA class (33.3% vs. 15.5%, 0.001). A PVS $> -4\%$ at baseline predicted worse outcomes even after adjustment for treatment assignment (hazard ratio 1.88, 95% confidence interval 1.01–3.51, 0.046).

Conclusions Intravenous iron therapy with FCM is associated with early reductions in PVS and weight, implying that decongestion might be one mechanism via which iron repletion aids CHF patients. Calculated PVS is of prognostic utility in this cohort.

Keywords Iron; Congestion; Plasma volume; Oedema

Received: 4 December 2018; Revised: 31 March 2019; Accepted: 30 April 2019

*Correspondence to: Dr Darlington Okonko, King's College London British Heart Foundation Centre, James Black Centre, 125 Coldharbour Lane, London SE5 9NU, UK. Tel: +44 (0)20 7848 5238. Email: obi.okonko@kcl.ac.uk

Introduction

Iron deficiency (ID) worsens symptoms, exercise capacity, and hospitalization rates in chronic heart failure (CHF),^{1–3} but the underlying mechanism(s) remain obscure. Because congestion drives dyspnoea, exercise intolerance, and hospital admissions in CHF,^{4,5} ID might be detrimental by directly or indirectly augmenting fluid retention. In experimental

animals and humans, ID has been shown to elevate circulating catecholamine levels that promote congestion in CHF,^{6,7} and in the small FERRIC-HF trial, intravenous (IV) iron sucrose significantly reduced body weight compared with placebo.⁸ To date, no study has appraised the impact of iron therapy on clinical congestion in a large CHF population, and none have addressed this interaction using newer and potentially more reliable metrics of fluid overload.

Plasma volume (PV) expansion underlies systemic congestion in CHF and can be objectively estimated using validated equations based on weight and haematocrit (Hct).^{9,10} In a prior analysis, calculated PV values were shown to significantly mirror those measured using gold standard radioisotope assays. Moreover, in a trial data set of 5002 CHF patients, relative PV status (PVS), derived by subtracting calculated ideal from actual PV levels, predicted outcomes even after adjustment for 22 variables including natriuretic peptides.¹¹

We sought to determine the distribution, correlates, and prognostic utility of calculated PVS in CHF patients enrolled in the large FAIR-HF (Ferric carboxymaltose Assessment in patients with Iron deficiency and chronic Heart Failure) trial.¹² Moreover, we investigated the impact of IV iron therapy with ferric carboxymaltose (FCM) on calculated PVS and clinical congestion in this cohort. Our co-primary hypotheses were that PVS levels would be predictive of outcomes and that iron repletion would trigger early reductions in PVS and clinical congestion consistent with a possible direct interaction between ID and volume overload in CHF.

Methods

Study design and patients

The design and primary results of the FAIR-HF trial have been reported previously.¹² Briefly, FAIR-HF was a multicentre, randomized, double-blind trial including 459 ambulatory patients with NYHA class II or III CHF,¹³ an left ventricular ejection fraction (LVEF) $\leq 40\%$ (NYHA II) or $\leq 45\%$ (NYHA III), ID as defined by a ferritin < 100 $\mu\text{g/L}$ or 100 to 299 $\mu\text{g/L}$ with a transferrin saturation $< 20\%$, and a haemoglobin (Hb) level between 9.5 and 13.5 g/L . Patients were randomized in a 2:1 ratio to IV iron as FCM or IV placebo (saline) weekly until iron repletion (correction phase), then 4 weekly until week 24 (maintenance phase). Regular assessments were done at weeks 4, 12, and 24. After 24 weeks of treatment, patients randomized to IV FCM had significant improvements in Patient Global Assessment, NYHA class, and 6 min walking distance (6MWD), compared with patients allocated to saline. The Hct and weight at randomization were used for PVS calculations and were available in 436 (95%) patients whose data were therefore used in this post hoc analysis. The FAIR-HF trial was conducted in accordance with the *Declaration of Helsinki*, with independent Institutional Review Board or ethics committee approval at all participating centres, and with written informed consent from all patients.

Plasma volume equations

Actual PV was calculated with the following equation that was derived by curve-fitting techniques using subjects' Hct

and weight compared with PV values measured with gold standard radioisotope assays⁹:

$$\text{actual PV} = ([1 - \text{Hct}] \times [a + (b \times \text{weight [kg]})])$$

where Hct is a fraction and $a = 1530$ in men and 864 in women, and $b = 41$ in men and 47.9 in women.

Ideal PV was calculated from the following well-established formula¹⁰:

$$\text{ideal PV} = c \times \text{weight (kg)}$$

where $c = 39$ in men and 40 in women.

Relative PVS, an index of the degree to which patients have deviated from their ideal PV, was subsequently calculated from the following equation:

$$\text{PVS} = ([\text{actual PV} - \text{ideal PV}] / \text{ideal PV}) \times 100\%$$

Clinical congestion

Patients were weighed and examined for signs and symptoms of congestion at randomization and at weeks 4, 12, and 24. The presence or absence of peripheral oedema, pulmonary congestion (crackles and rales), and an S3 gallop (third heart sound) were recorded, as was the actual jugular venous pressure (JVP).

Statistics

Data are presented as mean \pm SD, frequencies (%), or medians (interquartile range). Intergroup comparisons were made using a Kruskal–Wallis analysis of variance, analysis of covariance, Student *t*-test, Pearson χ^2 test, or a Mann–Whitney U-test as appropriate. Associations between variables were determined using logistic regression. A *P*-value < 0.10 was used to enter and retain covariates into stepwise multivariable regression models.

To assess the impact of treatment assignment on PVS, comparisons of changes in PVS from baseline at 4, 12, and 24 weeks between the placebo and FCM group were evaluated by comparing the least square means at each visit from a repeated-measures model using an unstructured covariance structure and adjusting for the continuous baseline value and a visit \times drug interaction. Changes over time for other variables were similarly determined.

For prognostic analyses, the key safety endpoint was the combined outcome of all-cause death or hospitalization. The relation between safety endpoints and baseline PVS as a continuous or categorical ($\leq -4\%$ vs. $> -4\%$) variable was determined using Cox proportional hazards analyses. This categorical cut-off was previously shown to best stratify outcomes in a large CHF cohort.¹¹ In Cox analyses, the proportional hazard assumption was assessed by inspection of the log time–log hazard plot. The event rate using a person-time 'at risk' denominator, hazard ratio (HR), 95% confidence

interval (CI), and significance levels for χ^2 (likelihood ratio test) were calculated. Kaplan–Meier cumulative survival plots were constructed for display and assessed using the log-rank test.

Data were analysed using SAS version 9.2 (SAS Institute Inc, Cary, NC). A two-tailed *P*-value <0.05 was considered statistically significant.

Results

Calculated plasma volume status in FAIR-HF and its baseline correlates

Baseline characteristics of the FAIR-HF cohort have been previously published.¹² In brief, the clinical and laboratory features of patients at enrolment were similar between those randomized to FCM (*n* = 304) and those randomized to placebo (*n* = 155). The baseline characteristics of the 436 patients included in this substudy are shown in *Table 1*. Their mean weight-adjusted actual PV, weight-adjusted ideal PV, and PVS were 37.3 ± 3 mL/kg, 3036.6 ± 573.2 mL/kg, and $-5.5 \pm 7.7\%$, respectively. Values of PVS ranged from -25% to $+24\%$. A PVS ≤ 0 or >0 was evident in 350 (80.3%) and 86 (19.7%) patients, respectively (*Figure 1*). The mean JVP was 1.9 cm with 9.2% of patients having an elevated JVP (>4 cm), and 35%, 23%, and 12% of patients having peripheral oedema, pulmonary oedema, and an S3 gallop, respectively.

On stratification, patients who were estimated to have a relatively increased PV (i.e. a PVS $> 0\%$) tended to be older and female with biochemical markers of potentially greater fluid retention such as a lower serum albumin, higher blood urea nitrogen, and a lower estimated glomerular filtration rate than those with a PVS $\leq 0\%$ (*Table 1*). They also had poorer haemodynamics and less pre-morbid hypertension. In a multivariable model incorporating age, gender, systolic blood pressure, albumin, estimated glomerular filtration rate, LVEF, and the use of diuretics, ACE inhibitors and β -blockers, only age (odds ratio 0.97, 0.02), systolic blood pressure (odds ratio 1.02, 0.01), and serum albumin (odds ratio 1.13, 0.01) independently predicted PVS.

Impact of ferric carboxymaltose on calculated plasma volume status and clinical congestion

At baseline, mean PVS was similar in the FCM ($-5.3\% \pm 7.7\%$) and placebo ($-6\% \pm 7.8\%$) groups. Over time, treatment with FCM was associated with significant reductions from baseline in PVS at week 4 ($-2.5 \pm 5.9\%$ vs. $0.6 \pm 4.3\%$), 12 ($-3.9 \pm 6.8\%$ vs. $0.2 \pm 5.3\%$), and 24 ($-4.1 \pm 7.4\%$ vs. $-2.0 \pm 5.5\%$), compared with placebo [*Figure 2A*]. The

treatment effect was maximal at week 12. Treatment with FCM was also associated with significant increases from baseline in Hct at week 4 ($0.02 \pm 0.04\%$ vs. $-0.004 \pm 0.03\%$), 12 ($0.03 \pm 0.04\%$ vs. $-0.002 \pm 0.04\%$), and 24 [$0.03 \pm 0.05\%$ vs. $0.01 \pm 0.04\%$; *Figure 2B*]. In contrast, FCM treatment was associated with a significant reduction from baseline in weight at week 4 (-0.2 ± 2.4 kg vs. 0.3 ± 1.8 kg), but not at week 12 (0.2 ± 3.0 kg vs. 0.6 ± 3.3 kg), or 24 [0.3 ± 3.2 kg vs. 0.6 ± 3.7 kg; *Figure 2C*]. Similar to the effect on PVS, there was an improvement in peripheral oedema with FCM treatment compared with placebo [*Figure 2D*] that did not reach statistical significance. Similar improvements in jugular venous distension (0.54), pulmonary oedema (0.35), or the presence of an S3 gallop rhythm (1.00) with FCM treatment were not evident.

Clinical correlates of change in calculated plasma volume status

A total of 309 (70.9%) patients survived to week 24 and had sufficient data to calculate change in PVS. From baseline to week 24, mean change in PVS (Δ PVS) in this cohort was $-3.5 \pm 6.9\%$, with volume expansion (Δ PVS $> 0\%$) evident in 93 (30.1%) patients. Compared with those with volume expansion, patients with decreasing volume status were more likely to improve their NYHA status by at least one class (33.3% vs. 15.1%, 0.005) despite adjustment for treatment and the interaction term for PVS change and treatment (0.23 for interaction). In the subgroup of patients who received FCM, NYHA class improved in 36.3% in those with Δ PVS $\leq 0\%$ compared with 21.4% in those with Δ PVS $> 0\%$. Similarly, in the placebo-treated subgroup, NYHA class improved in 25% and 5.4% of those with Δ PVS $\leq 0\%$ and $>0\%$, respectively. In contrast, while improvements in exercise capacity, as reflected by Δ 6MWD, was greater in those with Δ PVS $\leq 0\%$ (43.5 m vs. 26.8 m, 0.02), this became non-significant (0.13) after adjustment for treatment and the interaction term for PVS change and treatment (0.65 for interaction).

Calculated plasma volume status and outcomes in FAIR-HF

Safety endpoints are listed in *Table 2*. During the study period, 55 (13%) patients experienced the key safety endpoint of all-cause death or hospitalization, 9 (2%) died from any cause, 8 (2%) experienced a cardiovascular death, 3 (1%) experienced a CHF death, 46 (11%) were hospitalized for any cause, and 25 (6%) died or were hospitalized for worsening CHF.

A PVS cut-off of -4% was previously shown to be optimally predictive of outcomes in a large CHF cohort.¹¹ In this

Table 1 Baseline characteristics of FAIR-HF patients stratified by PVS

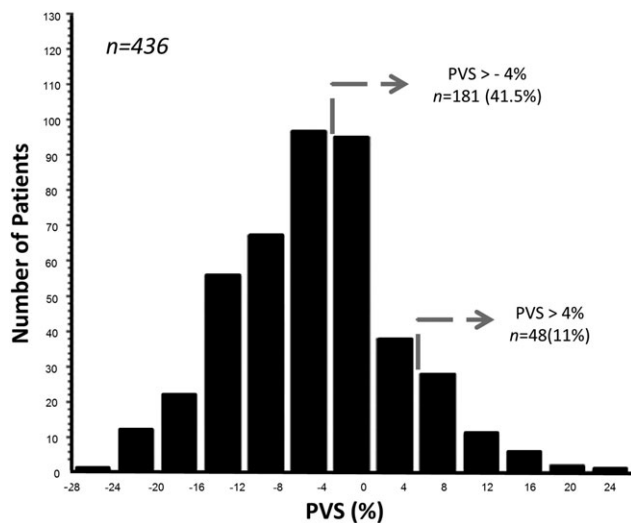
	All (N = 436)	PVS ≤ 0% (N = 350)	PVS > 0% (N = 86)	P value
Clinical variables				
Age, years	67.8 (10.71)	67.1 (10.54)	70.5 (11)	0.008
Male gender, n (%)	203 (46.6)	154 (44.0)	49 (57.0)	0.040
NYHA III, n (%)	361 (82.8)	288 (82.3)	73 (84.9)	0.635
Left ventricular ejection fraction, %	32.3 (5.7)	32.5 (5.61)	31.2 (5.94)	0.055
Ischaemic aetiology, n (%)	351 (80.5)	283 (80.9)	68 (79.1)	0.761
Prior CABG, n (%)	46 (10.6)	34 (9.7)	12 (14.0)	0.326
Prior PTCA, n (%)	61 (14.0)	48 (13.7)	13 (15.1)	0.862
Prior stroke, n (%)	29 (6.7)	24 (6.9)	5 (5.8)	0.815
History of atrial fibrillation, n (%)	131 (30.0)	107 (30.6)	24 (27.9)	0.695
History of hypertension, n (%)	352 (80.7)	291 (83.1)	61 (70.9)	0.014
History of diabetes mellitus, n (%)	120 (27.5)	103 (29.4)	17 (19.8)	0.080
Physical examination				
Systolic blood pressure, mm Hg	126.1 (14.71)	127 (14.52)	122.4 (14.98)	0.008
Diastolic blood pressure, mm Hg	76.4 (9.43)	77.1 (8.92)	73.5 (10.85)	0.001
Heart rate, bpm	71.3 (11.58)	71.5 (11.74)	70.2 (10.92)	
Weight, kg	76.9 (14.73)	79.8 (14.19)	65 (10.36)	<0.001
Body mass index, kg/m ²	27.9 (4.78)	28.8 (4.62)	24.3 (3.68)	<0.001
Hip/waist ratio, cm	1.1 (0.15)	1.1 (0.15)	1.1 (0.15)	0.289
Jugular venous pressure, cm	1.9 (2.22)	1.9 (2.16)	1.8 (2.49)	0.871
Peripheral oedema, n (%)	152 (34.9)	127 (36.3)	25 (29.1)	0.256
Pulmonary oedema, n (%)	99 (22.7)	80 (22.9)	19 (22.1)	0.888
Third heart sound (S3 gallop), n (%)	53 (12.2)	44 (12.6)	9 (10.5)	0.714
Six minute walk test distance, m	270.8 (106.83)	275 (106.4)	253.6 (107.43)	0.096
Quality of life				
KCCQ overall score	59 (20.05)	58.4 (20.16)	61.7 (19.48)	0.173
EQ-5D health score	54.2 (16.27)	54.2 (16.25)	54 (16.49)	0.922
Laboratory measurements				
Haemoglobin, g/dL	11.9 (1.29)	12.2 (1.18)	10.9 (1.14)	<0.001
Haematocrit	0.4 (0.04)	0.4 (0.04)	0.3 (0.03)	<0.001
Serum ferritin, µg/L	53.8 (57.8)	54.5 (59.31)	51.1 (51.39)	0.624
Transferrin saturation, %	17.4 (11.25)	17.7 (9.92)	16.1 (15.55)	0.242
C-reactive protein, mg/L	5 (4.33)	4.9 (4.33)	5.2 (4.34)	0.577
Sodium, mmol/L	140.7 (2.83)	140.8 (2.87)	140.4 (2.63)	0.221
Serum albumin, g/L	43.1 (2.78)	43.3 (2.72)	42.2 (2.83)	0.001
Alanine aminotransferase, U/L	19.8 (11.14)	20.2 (11.31)	18.5 (10.42)	0.231
Aspartate aminotransferase, U/L	22.8 (9.58)	22.7 (9.67)	23.1 (9.29)	0.752
Creatinine, mg/dL	1.2 (0.59)	1.1 (0.43)	1.5 (0.96)	<0.001
GFR (MDRD), mL/min/1.73 m ²	63.7 (22.57)	65.1 (21.47)	58.1 (25.98)	0.010
Blood urea nitrogen, mg/dL	24.5 (12.87)	23.4 (11.81)	28.8 (15.86)	0.001
Calculated plasma volumes				
Ideal plasma volume, mL	3037 (573)	3153 (550)	2563 (395)	<0.001
Actual plasma volume, mL	2843 (441)	2878 (445)	2698 (394)	0.001
Plasma volume status (PVS), %	-5.5 (7.71)	-8.2 (5.6)	5.5 (4.71)	—
Medications, %				
ACE inhibitor or ARB, n (%)	402 (92.2)	326 (93.1)	76 (88.4)	0.1751
β-blocker, n (%)	373 (85.6)	299 (85.4)	74 (86.0)	1.000
Aldosterone antagonist, n (%)	211 (48.4)	167 (47.7)	44 (51.2)	0.6303
Cardiac glycosides, n (%)	69 (15.8)	52 (14.9)	17 (19.8)	0.3217
Diuretic, n (%)	402 (92.2)	323 (92.3)	79 (91.9)	1.000

Data are means (SD) or numbers (frequency). ACE, angiotensin converting enzyme inhibitor; ARB, angiotensin receptor blockers; CABG, coronary artery bypass grafting; CRP, C-reactive protein; eGFR, estimated glomerular filtration rate; MDRD, modification of diet in renal disease equation; PTCA, percutaneous coronary angioplasty; PVS, plasma volume status.

FAIR-HF population, patients with a baseline PVS > -4% experienced a higher incidence of all safety endpoints than those with a PVS ≤ -4%, with the difference in incidence statistically significant for the key safety endpoint of all-cause death or hospitalization. In Cox analyses, a PVS > -4% was associated with an 89% (unadjusted HR 1.89, 95% CI 1.05 to 3.40, 0.03) greater risk of the key endpoint (Figure 3) even after bivariate adjustment for

treatment assignment (adjusted HR 1.88, 95% CI 1.01 to 3.51, 0.046), JVP (adjusted HR 2.18, 95% CI 1.05 to 4.51, 0.04), or the presence of pulmonary (adjusted HR 1.88, 95% CI 1.01 to 3.50, 0.047) or peripheral oedema (adjusted HR 1.89, 95% CI 1.01 to 3.52, 0.045). As a continuous variable, higher PVS values were also associated with a greater incidence of all-cause death or hospitalization (unadjusted HR 1.07, 95% CI 1.03 to 1.12, P < 0.001).

Figure 1 Distribution of plasma volume status (PVS) in FAIR-HF.



Discussion

Iron deficiency escalates symptoms and exercise intolerance in CHF and might do so by promoting fluid retention. We

tested this hypothesis and the prognostic utility of PVS, a novel index of congestion, in the large FAIR-HF data set and made several observations. First, volume status, as estimated by the PVS equation, was mildly contracted in this stable population and related to age, gender, and biochemical markers of fluid overload. Second, compared with placebo, IV iron therapy with FCM was associated with greater reductions in PVS and other measures of congestion such as weight. The impact of FCM on PVS and weight was evident early at 4 weeks supporting a potential direct decongestive effect of iron repletion in CHF. Third, an increase in PVS over time was associated with worsening symptoms and exercise capacity irrespective of treatment allocation. Fourth, higher PVS values predicted an increased risk of death or hospitalization over the coming 6 months.

Plasma volume status was marginally contracted in the FAIR-HF cohort to a degree comparable with other stable CHF patients. Using tracer dilution techniques, Bonfils *et al.* and Adlbrecht *et al.* reported actual PV values of 37 ± 6 mL/kg and 37 ± 4 mL/kg, respectively,^{14,15} in line with our calculated value of 37 ± 3 mL/kg. This contrasts to the higher PV levels measured in decompensated CHF patients (58 ± 3 mL/kg) and healthy controls (43 ± 3 mL/kg)¹⁶ and reflects the impact of optimal medical and device-based

Figure 2 Change in markers of congestion in FAIR-HF. Alterations from baseline to week 24 in PVS (A), Hct (B), weight (C), and peripheral oedema (D) are shown. A total of 372, 371, and 309 patients had data for analysis at weeks 4, 12, and 24, respectively. ANOVA, analysis of variance; FCM, ferric carboxymaltose; PVS, plasma volume status.

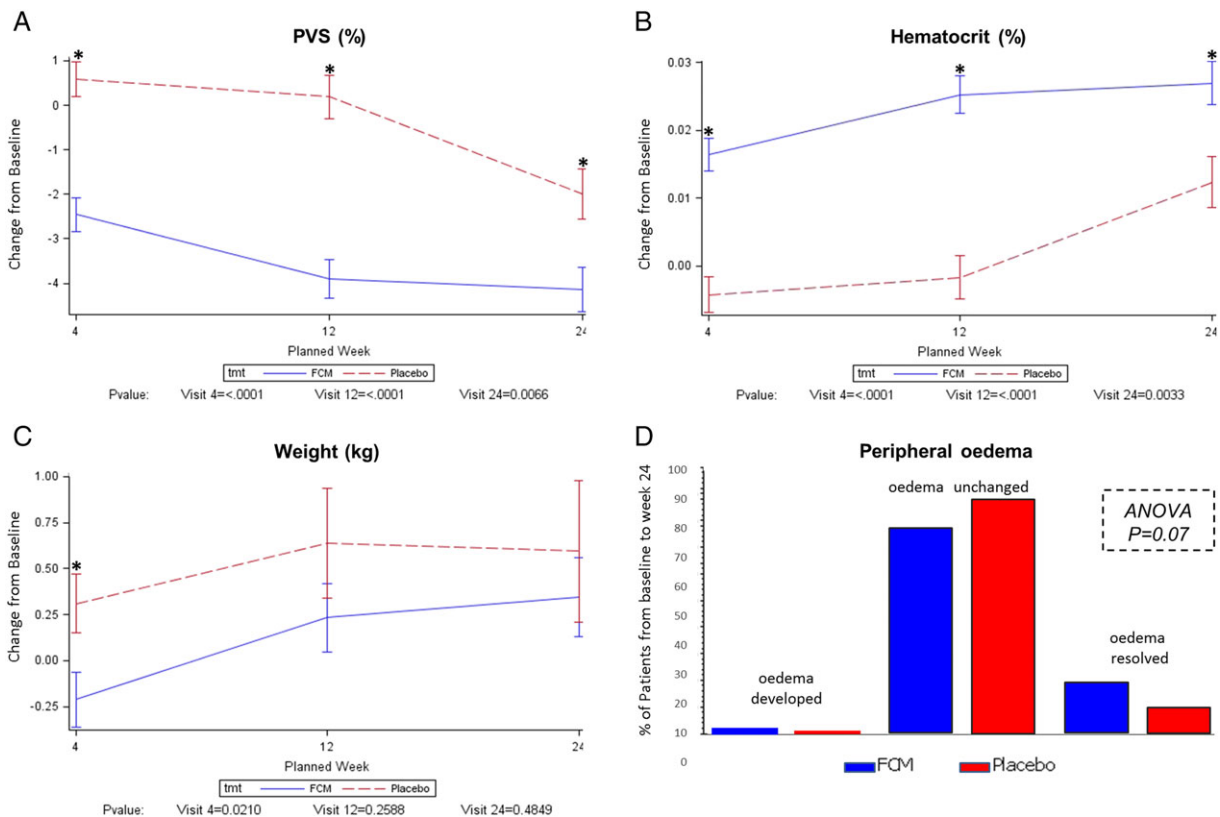


Table 2 Safety endpoints stratified by baseline PVS cut-off

Endpoint or event	PVS \leq -4% (n = 255)		PVS > -4% (n = 181)		Hazard ratio 95% CI	P value
	Number of events	Incidence/ (100 patient-year at risk)	Number of events	Incidence/ (100 patient-year at risk)		
Any hospitalization or death ^a	23	20 (16.7)	32	25 (31.6)	1.89 (1.05–3.40)	0.031
Any death	3	3 (2.4)	6	6 (7.1)	2.94 (0.74–11.76)	0.11
Cardiovascular death	3	3 (2.4)	5	5 (5.9)	2.45 (0.58–10.25)	0.21
Death due to worsening CHF	1	1 (0.8)	2	2 (2.4)	2.93 (0.27–32.35)	0.36
Any hospitalization	20	17 (14.2)	26	21 (26.5)	1.86 (0.98–3.53)	0.053
Any hospitalization for any cardiovascular reason	15	14 (11.6)	18	14 (17.3)	1.48 (0.71–3.11)	0.30
Any hospitalization for worsening CHF	7	6 (4.9)	9	7 (8.4)	1.74 (0.58–5.18)	0.31
Any hospitalization for any cardiovascular reason or death	18	17 (14.1)	24	18 (22.2)	1.57 (0.81–3.05)	0.18
Any hospitalization for worsening CHF or death	10	9 (7.3)	15	12 (14.4)	1.98 (0.84–4.71)	0.11
Any hospitalization or death for any cardiovascular reason	18	17 (14.1)	23	17 (21.0)	1.48 (0.76–2.91)	0.25
Any hospitalization or death for worsening CHF	8	7 (5.7)	11	8 (9.6)	1.70 (0.62–4.69)	0.30

Only unplanned hospitalizations and deaths are summarized. CHF, chronic heart failure; PVS, plasma volume status.

^aKey endpoint.

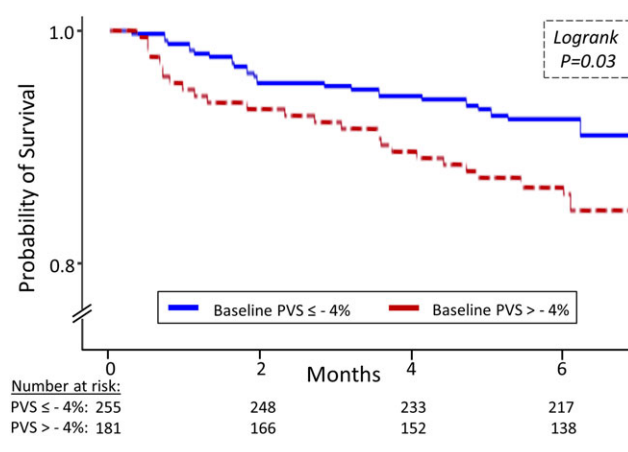
therapies on volume status. Consistent with the aforementioned PV levels, and the fact that the ideal PV equation was originally derived in normal individuals, it is unsurprising that patients in FAIR-HF had mean PV levels that were ~5% lower than their estimated ideal. This contraction of PV in CHF is important as it likely allows the failing myocardium to continue to operate on a reasonable portion of the Frank–Starling curve.

Concordant with its potential utility as a surrogate of volume overload, calculated PVS was higher in patients with features of greater disease severity such as poorer haemodynamics and correlated to key biochemical markers of congestion. This included serum albumin that is known to modulate plasma oncotic pressure.¹⁷ These associations, together with our prior demonstration of a good correlation

between calculated and measured PV levels,¹¹ supported our use of the PVS equation to gauge changes in intravascular filing with IV FCM.

Treatment with FCM was associated with reductions in PVS at 4 weeks and the fact that this was paralleled by attenuations in weight, which is a clinical barometer of congestion, suggests that FCM might have had a true and early decongestive effect. This is consistent with the FERRIC-HF trial that showed a 4.6 kg relative reduction in weight with IV iron sucrose compared with control over 16 weeks.⁸ It also accords with Toblli *et al.* who reported a 1.5 kg/m² relative reduction in body mass index with IV iron sucrose vs. saline over 6 months.¹⁸ In contrast, no meaningful changes in other physical markers of congestion were seen with FCM. This likely reflects the subjective nature of physical examinations, especially in the setting of multicentre trials. While definitive answers cannot be given, several mechanisms might explain the reduction in PVS seen with FCM.

Treatment with FCM might have been linked to attenuations in PVS for a number of reasons. First, it could be argued that decrements in PVS merely reflect the increments in Hct seen with FCM and are not truly indicative of a change in congestion. However, FCM treatment was also accompanied by reductions in weight. Given that weight is a clinically accepted gauge of short-term PV changes and that no evidence exists to suggest that FCM triggers non-oedematous weight loss, it is likely that FCM truly diminished congestion. This diminution might have been indirect by virtue of iron repletion improving myocardial function leading to downstream improvements in global clinical status and congestion. Alternatively, FCM might have improved renal function¹⁹ and/or directly modulated key aspects of the CHF syndrome such as the neurohormonal axis to trigger decongestion. This is plausible given that ID

Figure 3 Baseline PVS categories (\leq -4% vs. >-4%) and survival. PVS, plasma volume status.

enhances circulating catecholamine levels that promote congestion partly by activating the renin–angiotensin–aldosterone cascade.^{6,7,20} This direct mode of action appears more credible given that 4 weeks is conventionally too short for any agent to significantly remodel the failing myocardium, and IV iron repletion in CHF has yet to be shown to improve LVEF on echocardiography.^{2,8} Irrespective of the underlying mechanism(s), changes in PVS over time correlated to alterations in other indices of CHF status.

Temporal increases in PVS were accompanied by worsening symptoms. This likely reflects the combination of impaired tissue oxygenation because of lower haemoglobin levels, decreased effort tolerance because of weight gain, and impaired lung and skeletal muscle function as a result of tissue congestion. That changes in PVS were linked to changes in key markers of survival suggested that it too might also be related to mortality.

Similar to the findings in the larger Val-HeFT population,¹¹ calculated PVS as a continuous or dichotomized ($\leq -4\%$ vs. $> -4\%$) variable forecasted deaths and hospitalizations in the FAIR-HF cohort. Moreover, it did so after adjustment for treatment allocation implying that the associations elucidated here were not simply driven by FCM. This is consistent with the ominous nature of other surrogates of congestion such as elevated pulmonary capillary wedge pressures, ultrasound indices of raised intracardiac filling, jugular venous distension, a third heart sound, congestive symptoms, and natriuretic peptides.^{21–25} Calculated PVS might be prognostic because it truly reflects fluid retention that could be a marker or mediator of CHF progression. Alternatively, it may only be mirroring the prognostic implications of weight and Hct or other factors in CHF that modulate these variables.

Our study has limitations. First, it is a retrospective post hoc analysis of the FAIR-HF trial with all the inherent weaknesses this entails including the inability to establish a causal relation between correlated variables. Second, like all surrogates of congestion, the PVS equation is not perfect, underestimates true volume status, and has so far only shown modest correlation with invasively determined PV in CHF patients in a retrospective study.¹¹ Additional refinements of this equation are likely needed but, ultimately, the true utility of PVS can only be gauged via prospective interventional studies. Third, we did not quantify PV directly, and further studies are needed to investigate the impact of IV iron

repletion on volume status as measured using radioisotope techniques. For now, the results presented in this analysis should be considered hypothesis generating.

In summary, IV iron therapy with FCM is associated with reductions in PVS and weight even as early as 4 weeks after treatment initiation. This supports a potential decongestive effect of IV iron therapy in CHF that might be one mechanism via which iron repletion improves symptoms, quality of life, and exercise performance in this population. Calculated PVS, a simple novel marker of fluid overload, predicted deaths and hospitalizations in the FAIR-HF cohort irrespective of treatment assignment.

Acknowledgements

None to declare.

Conflict of interest

The FAIR-HF trial was supported by Vifor Pharma, Glattbrugg, Switzerland. All authors had full access to the study data, decided to submit the report for publication, and assume responsibility for the completeness and accuracy of the data, and the content and integrity of the report. C.M. and S.C. are employees of Vifor. D.O.O. has received speaker's fees and research support from Vifor and Pharmacosmos. S.D.A. has received fees for consulting and/or speaking from Bayer, Boehringer Ingelheim, Novartis, Servier, and Vifor. S.D.A. has received research grants from Abbott Vascular and Vifor. G.P. is a member of Committees in trials and registries sponsored by Vifor, Novartis, Bayer, and Servier. P.P. has received consulting and speaker's fees and research grants from Vifor.

Funding

The FAIR-HF trial was supported by Vifor Pharma, Glattbrugg, Switzerland. D.O.O. is supported by the British Heart Foundation (grant number FS/14/77/30913), the NIHR Biomedical Research Centre at Guy's and St Thomas' NHS foundation trust and King's College London.

References

1. Okonko DO, Mandal AK, Missouri CG, Poole-Wilson PA. Disordered iron homeostasis in chronic heart failure: prevalence, predictors and relation to anemia, exercise capacity and survival. *J Am Coll Cardiol* 2011; **58**: 1241–1251.
2. Jankowska EA, Tkaczyszyn M, Suchocki T, Droz D, von Haehling S, Doehner W, Banasiak W, Filippatos G, Anker SD, Ponikowski P. Effects of intravenous iron therapy in iron-deficient patients with systolic heart failure: a meta-analysis of randomised controlled trials. *Eur J Heart Fail* 2016; **18**: 786–795.
3. Nunez J, Comin-Colet J, Minana G, Nunez E, Santas E, Mollar A, Valero E, Garcia-Blas S, Cardells I, Bodi V, Chorro FJ, Sanchis J. Iron deficiency and risk of

- early readmission following a hospitalization for heart failure. *Eur J Heart Fail* 2016; **18**: 798–802.
4. Dupont M, Mullens W, Tang WH. Impact of systemic venous congestion in heart failure. *Curr Heart Fail Rep* 2011; **8**: 233–241.
 5. Klein L. Treating hemodynamic congestion is the key to prevent heart failure hospitalizations. *JACC Heart Fail* 2016; **4**: 345–347.
 6. Dillmann E, Johnson DG, Martin J, Mackler B, Finch C. Catecholamine elevation in iron deficiency. *Am J Phys* 1979; **237**: R297–R300.
 7. Webb TE, Krill CE Jr, Oski FA, Tsou KC. Relationship of iron status to urinary norepinephrine excretion in children 7–12 years of age. *J Pediatr Gastroenterol Nutr* 1982; **1**: 207–209.
 8. Okonko DO, Grzeslo A, Witkowski T, Mandal AK, Slater RM, Roughton M, Folders G, Thum T, Majda J, Banasiak W, Missouris CG, Poole-Wilson PA, Anker SD, Ponikowski P. Effect of intravenous iron sucrose on exercise tolerance in anemic and non-anemic patients with symptomatic chronic heart failure and iron deficiency (FERRIC-HF): a randomised, controlled, observer-blinded trial. *J Am Coll Cardiol* 2008; **51**: 103–112.
 9. Hakim RM. Plasmapheresis. In Daugirdas J. T., Blake P. G., Ing T. S., eds. *Handbook of Dialysis*, Vol. 236, third ed. Lippincott, Williams and Wilkins; 2001.
 10. Longo D. Table 218: body fluids and other mass data. In Longo DL, Fauci AS, Kasper DL, Hauser SL, Jameson JL, Loscalzo J, eds. *Harrison's Principles of Internal Medicine*, 18th ed. McGraw-Hill; 2011. p A-1.
 11. Ling HZ, Flint J, Damgaard M, Bonfils PK, Cheng AS, Aggarwal S, Velmurugan S, Mendonca M, Rashid M, Kang S, Papalia F, Weissert S, Coats CJ, Thomas M, Kuskowski M, Cohn JN, Woldman S, Anand IS, Okonko DO. Calculated plasma volume status and prognosis in chronic heart failure. *Eur J Heart Fail* 2015; **17**: 35–43.
 12. Anker SD, Comin Colet J, Filippatos G, Willenheimer R, Dickstein K, Drexler H, Luscher TF, Bart B, Banasiak W, Niegowska J, Kirwan BA, Mori C, von Eisenhardt Rothe B, Pocock SJ, Poole-Wilson PA, Ponikowski P. Ferric carboxymaltose in patients with heart failure and iron deficiency. *N Engl J Med* 2009; **361**: 1–13.
 13. Ponikowski P, Voors AA, Anker SD, Bueno H, Cleland JGF, Coats AJS, Falk V, González-Juanatey JR, Harjola VP, Jankowska EA, Jessup M, Linde C, Nihoyannopoulos P, Parissis JT, Pieske B, Riley JP, Rosano GMC, Ruilope LM, Ruschitzka F, Rutten FH, van der Meer P, ESC Scientific Document Group. 2016 ESC guidelines for the diagnosis and treatment of acute and chronic heart failure: the Task Force for the diagnosis and treatment of acute and chronic heart failure of the European Society of Cardiology (ESC). Developed with the special contribution of the Heart Failure Association (HFA) of the ESC. *Eur J Heart Fail* 2016; **18**: 891–975.
 14. Bonfils PK, Damgaard M, Taskiran M, Goetze JP, Norsk P, Gadsboll N. Impact of diuretic treatment and sodium intake on plasma volume in patients with compensated systolic heart failure. *Eur Heart J* 2010; **12**: 995–1001.
 15. Adlbrecht C, Kommata S, Hulsmann M, Szekeres T, Bieglmayer C, Strunk G, Karanikas G, Berger R, Mortl D, Kletter K, Maurer G, Lang IM, Pacher R. Chronic heart failure leads to an expanded plasma volume and pseudoanaemia, but does not lead to a reduction in the body's red cell volume. *Eur Heart J* 2008; **29**: 2343–2350.
 16. Anand IS, Ferrari R, Kalra GS, Wahi PL, Poole-Wilson PA, Harris PC. Oedema of cardiac origin. Studies of body water and sodium, renal function, hemodynamic indexes, and plasma hormones in untreated congestive cardiac failure. *Circulation* 1989; **80**: 299–305.
 17. Jabbour R, Ling HZ, Norrington K, Amaral N, Zaman N, Aggarwal S, Aung N, Barron A, Manisty C, Baruah R, Cole GD, Missouris CG, Mayet J, Francis DP, Cheng AS, Thomas M, Woldman S, Okonko DO. Serum albumin changes and multivariate dynamic risk modelling in chronic heart failure. *Int J Cardiol* 2014; **176**: 437–443.
 18. Toblli JE, Lombraña A, Duarte P, Di Gennaro F. Intravenous iron reduces NT-pro-brain natriuretic peptide in anemic patients with chronic heart failure and renal insufficiency. *J Am Coll Cardiol* 2007; **50**: 1657–1665.
 19. Ponikowski P, Filippatos G, Colet JC, Willenheimer R, Dickstein K, Lüscher T, Gaudesius G, von Eisenhart Rothe B, Mori C, Greenlaw N, Ford I, Macdougall I, Anker SD, FAIR-HF Trial Investigators. The impact of intravenous ferric carboxymaltose on renal function: an analysis of the FAIR-HF study. *Eur J Heart Fail* 2015; **17**: 329–339.
 20. Aldehni F, Tang T, Madsen K, Plattner M, Schreiber A, Friis UG, Hammond HK, Han PL, Schweda F. Stimulation of renin secretion by catecholamines is dependent on adenylyl cyclases 5 and 6. *Hypertension* 2011; **57**: 460–468.
 21. Binanay C, Califf RM, Hasselblad V, O'Connor CM, Shah MR, Sopko G, Stevenson LW, Francis GS, Leier CV, Miller LW. Evaluation study of congestive heart failure and pulmonary artery catheterization effectiveness: the ESCAPE trial. *JAMA* 2005; **294**: 1625–1633.
 22. Guazzi M, Myers J, Peberdy MA, Bensimhon D, Chase P, Pinkstaff S, Arena R. Echocardiography with tissue doppler imaging and cardiopulmonary exercise testing in patients with heart failure: a correlative and prognosis analysis. *Int J Cardiol* 2010; **143**: 323–329.
 23. Platz E, Merz AA, Jhund PS, Vazir A, Campbell R, McMurray JJ. Dynamic changes and prognostic value of pulmonary congestion by lung ultrasound in acute and chronic heart failure: a systematic review. *Eur J Heart Fail* 2017; **19**: 1154–1163.
 24. Drazner MH, Rame JE, Stevenson LW, Dries DL. Prognostic importance of elevated jugular venous pressure and a third heart sound in patients with heart failure. *N Engl J Med* 2001; **345**: 574–581.
 25. Voors AA, Ouwerkerk W, Zannad F, van Veldhuisen DJ, Samani NJ, Ponikowski P, Ng LL, Metra M, Ter Maaten JM, Lang CC, Hillege HL, van der Harst P, Filippatos G, Dickstein K, Cleland JG, Anker SD, Zwiderman AH. Development and validation of multivariable models to predict mortality and hospitalization in patients with heart failure. *Eur J Heart Fail* 2017; **19**: 627–634.